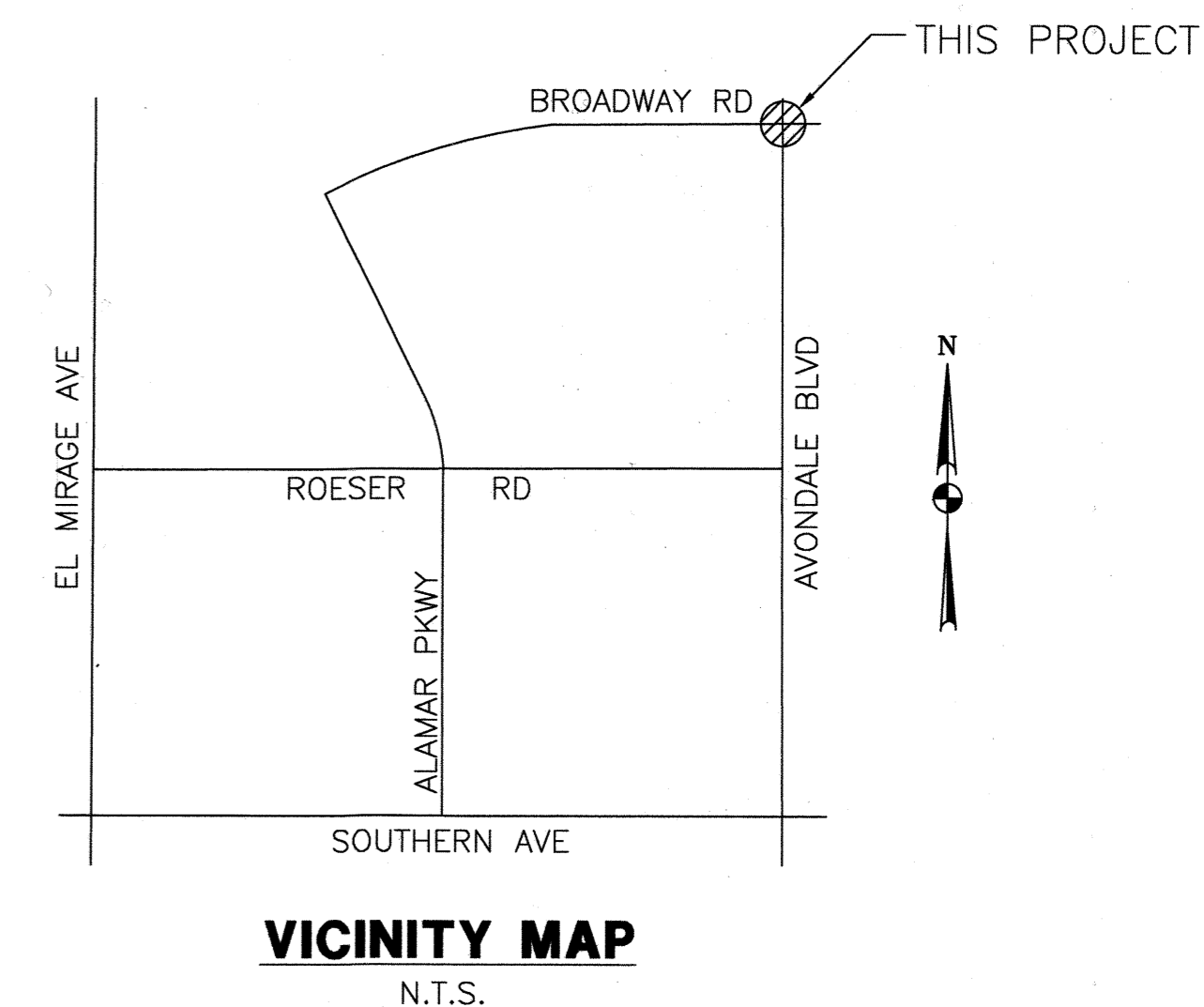


ALAMAR AVONDALE BLVD & BROADWAY RD TRAFFIC SIGNAL PULL BOX PLAN

DEVELOPER
BROOKFIELD RESIDENTIAL
14646 N. KIERLAND BLVD, SUITE 165
SCOTTSDALE, AZ 85254
PHONE: (602) 903-7509
CONTACT: ROGER THEIS

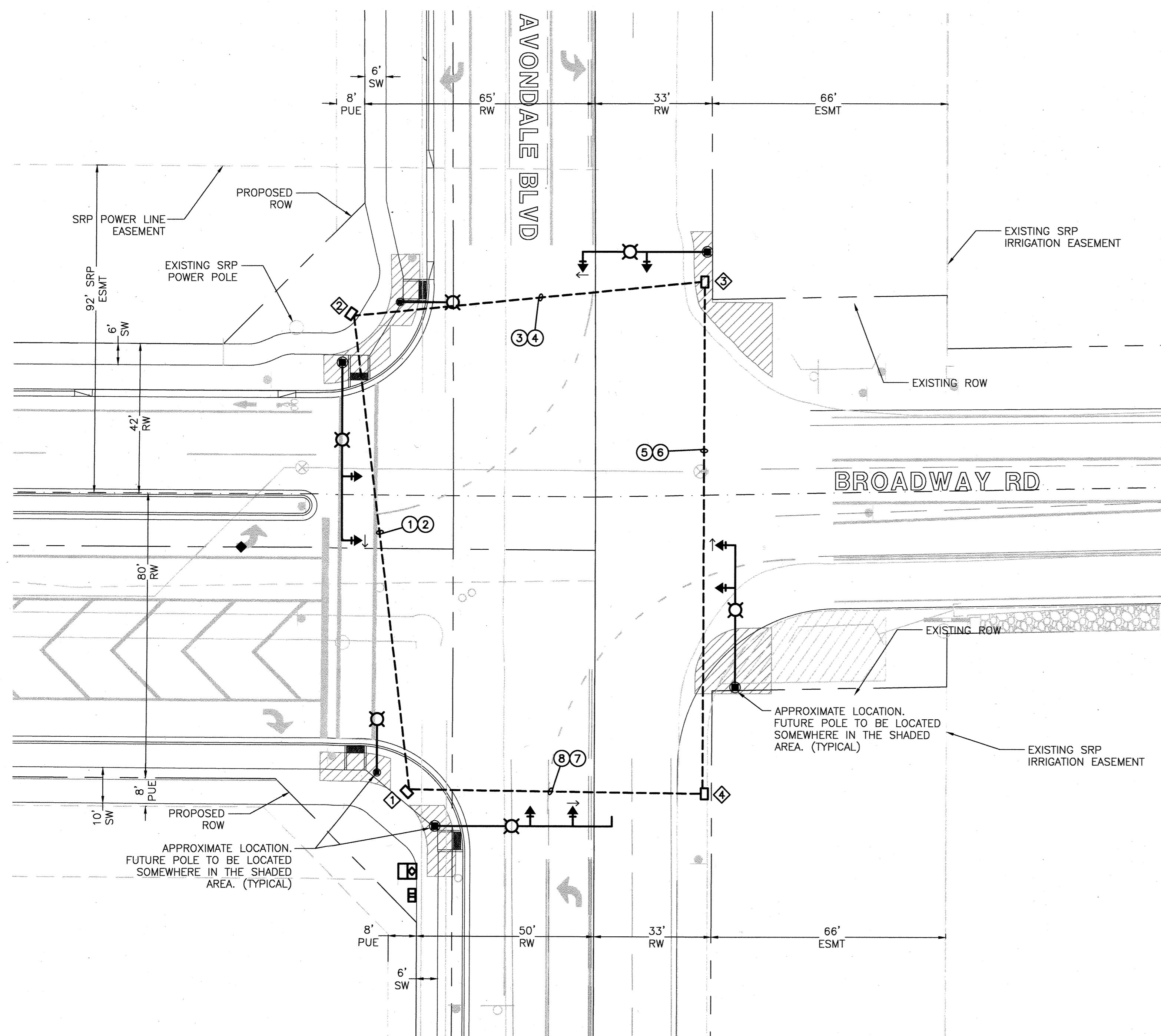
ELECTRICAL ENGINEER
WRIGHT ENGINEERING CORPORATION
165 EAST CHILTON DRIVE
CHANDLER, ARIZONA 85225
PHONE: (480) 497-5829
FAX: (480) 497-5807
CONTACT: ADAM BOWERS

CIVIL ENGINEER
WOOD, PATEL & ASSOCIATES, INC
2051 WEST NORTHERN AVE, SUITE 100
PHOENIX, ARIZONA 85021
PHONE: (602) 335-8500
CONTACT: FRANK KOO, P.E.



WRIGHT ENGINEERING
PROJECT NO:
18184
DESIGN BY: WTB
DRAWN BY: WTB
CHECKED BY: AMB

WRIGHT
engineering corporation
ELECTRICAL ENGINEERING AND DESIGN
165 EAST CHILTON DRIVE • CHANDLER, ARIZONA 85225
PHONE: (480) 497-5829 • FAX: (480) 497-5807
www.wrightengineering.us



CONDUCTOR SCHEDULE

CONDUIT RUN NO.	CONDUIT SIZE (IN)							
	1	2	3	4	5	6	7	8
AWG	20-CONDUCTOR CABLE							
IMSA	7-CONDUCTOR CABLE							
	4-CONDUCTOR CABLE							
#4 AWG	HOT THW BLACK							
	COMMON THW WHITE							
#8 AWG	BARE BOND SOLID							
	COMMON THW WHITE							
#12 AWG (THW)	HOT THW BLACK							
	HOT SIGN LIGHTING							
	SIGN COMMON WHITE							
	HOT STREET LIGHTING							
	GROUND GREEN	1	1	1	1	1	1	1
	PULL TAPE	1	1	1	1	1	1	1
■	INTERTIE (TELEPHONE)							
▲	PRE-EMPTION							
◆	VIDEO DETECTION							

PULL BOX SCHEDULE

PULL BOX NO.	TYPE	OFFSET FROM BROADWAY	OFFSET FROM AVONDALE BLVD
1	7	68' SOUTH	53' WEST
2	7 WITH COLLAR*	66' NORTH	69' WEST
3	7	76' NORTH	31' EAST
4	7	68' SOUTH	31' EAST

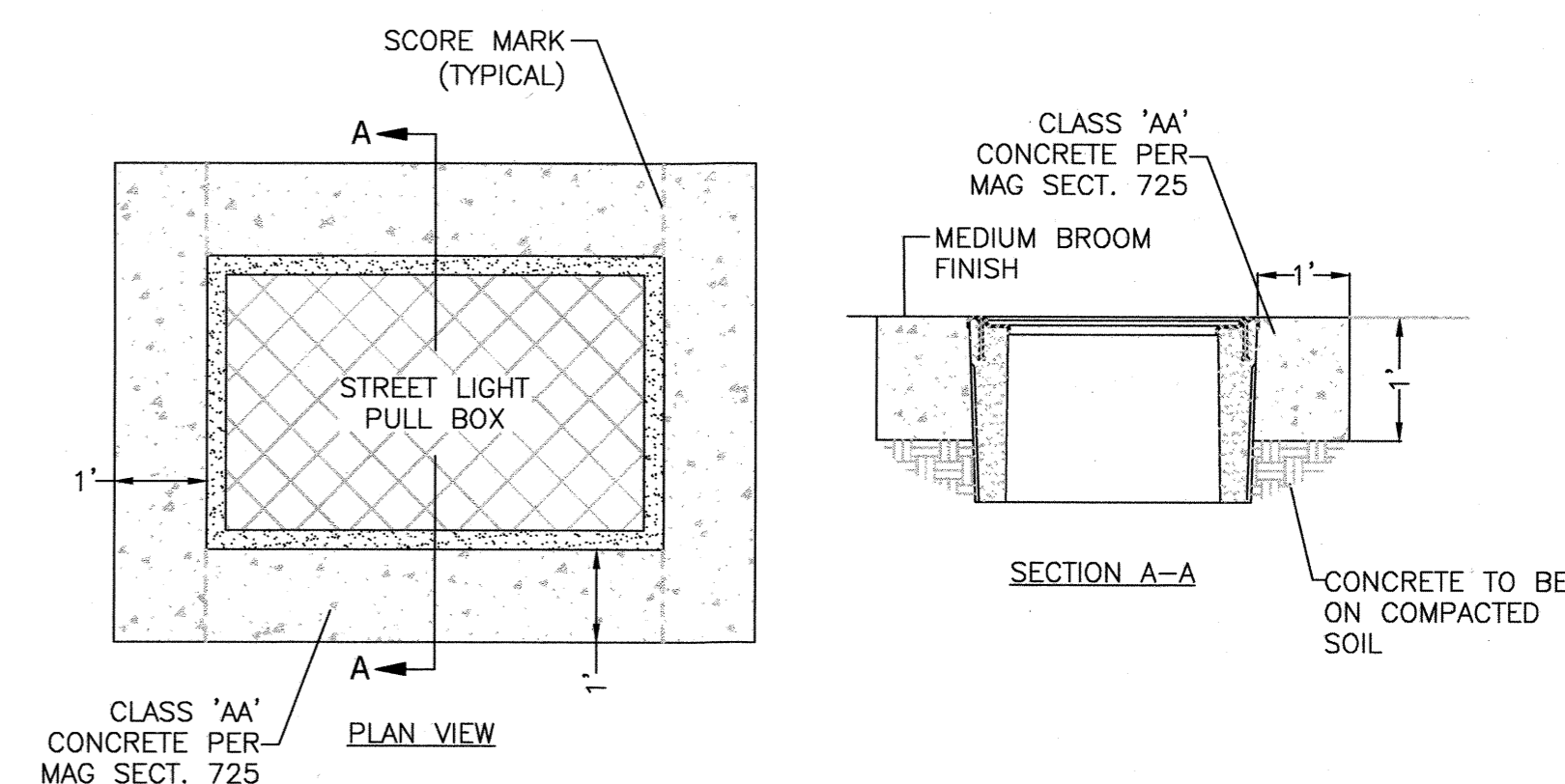
ALL LOCATIONS SHALL BE VERIFIED & APPROVED IN THE FIELD BY THE CITY. MEASUREMENTS ARE TO THE CENTER OF PULL BOXES.

* TYPE 7 PULL BOX WITH COLLAR SHALL BE A HEAVY DUTY PULL BOX PER ADOT DETAIL TS 1-2. FOR CONCRETE COLLAR SEE DETAIL 'A' ON THIS PAGE.

- ◆ CABLE FOR VIDEO DETECTION CAMERAS SHALL BE PER MANUFACTURER'S SPECIFICATIONS
- BELDEN 9883, OR APPROVED EQUIVALENT
- ▲ 3-M OPTICOM, MODEL 138 OPTICAL DETECTOR CABLE
- E EXISTING CONDUIT RUN

SHEET INDEX

SHEET TS1 PULL BOX PLAN
SHEET TS2 PULL BOX PLAN



A CONCRETE COLLAR FOR PULL BOX
NO SCALE

NOTE:
ALL CONSTRUCTION SHALL BE IN ACCORDANCE WITH THE CITY OF AVONDALE CONSTRUCTION SPECIFICATIONS CURRENTLY ON FILE AND AVAILABLE AT THE CITY OF AVONDALE ENGINEERING DEPARTMENT.

'AS-BUILT' CERTIFICATION

I HEREBY CERTIFY THAT THE "AS-BUILT" INFORMATION SHOWN HEREON WAS OBTAINED UNDER MY DIRECT SUPERVISION AND IS CORRECT AND COMPLETE TO THE BEST OF MY KNOWLEDGE AND BELIEF.

REGISTERED PROFESSIONAL ENGINEER _____ DATE _____

REGISTRATION NUMBER _____
NAME: _____
ADDRESS: _____
PHONE #: _____

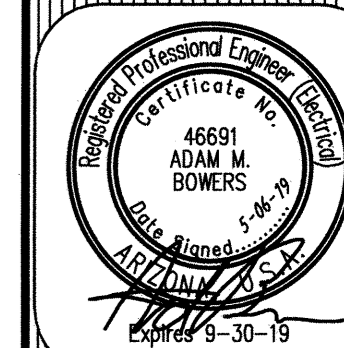
APPROVED BY
Adam M. Bowers
CITY ENGINEERING DEPARTMENT
11465 W. CIVIC CENTER DR.
SUITE 120
AVONDALE, AZ 85323
PHONE: (623) 478-3270
FAX: (623) 478-3812

DATE: 5/8/2019

THE CITY APPROVES THESE PLANS FOR CONCEPT ONLY AND ACCEPTS NO LIABILITY FOR ERRORS OR OMISSIONS.

ARIZONA BLUE STAKE
CALL THE WORKING GUY
BEFORE YOU DIG
Dial 811 or
602-263-1100
1-800-STAKE-IT
(OUTSIDE MARICOPA COUNTY)

NO.	DATE	SUBMITTALS/REVISIONS (DESCRIPTIONS)
1	OCT 2018	1ST SUBMITTAL
2	DEC 2018	2ND SUBMITTAL
3	MAY 2019	3RD SUBMITTAL



DRAWING NO:
TS1
OF 2

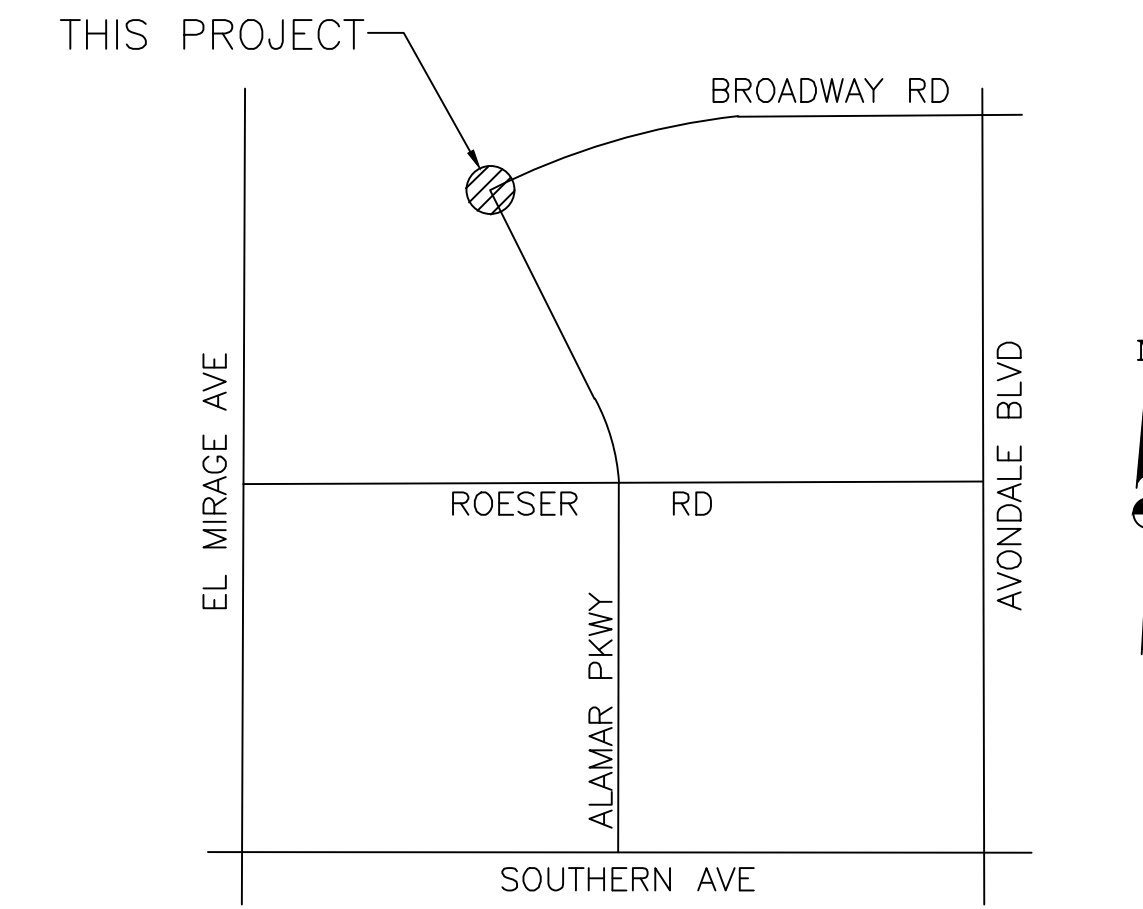
THESE DRAWINGS AND SPECIFICATIONS ARE THE SOLE PROPERTY OF WRIGHT ENGINEERING CORPORATION AND MAY NOT BE REPRODUCED OR MODIFIED FOR ANY USE WITHOUT THE EXPRESS WRITTEN PERMISSION OF WRIGHT ENGINEERING CORPORATION.

H:\2018\18184-Lokin Property Phase 1\18184-TS.dwg

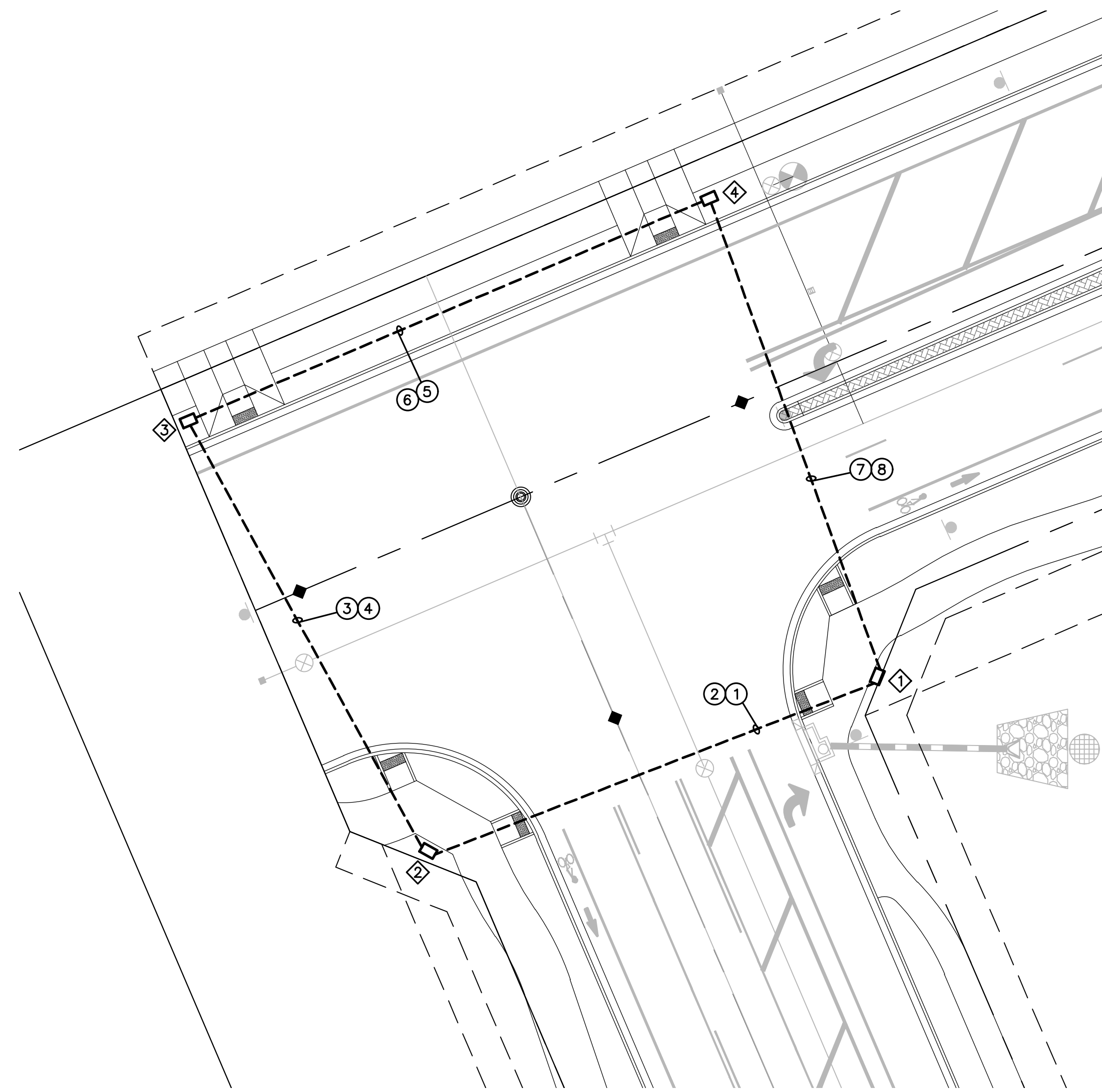
ALAMAR

ALAMAR BLVD & BROADWAY RD

TRAFFIC SIGNAL PULL BOX PLAN



VICINITY MAP
N.T.S.



CONDUCTOR SCHEDULE

	CONDUIT RUN NO.	1	2	3	4	5	6	7	8
	CONDUIT SIZE (IN)	3	3	3	3	3	3	3	3
AWG	CIRCUIT PHASE								
IMSA *	20-CONDUCTOR CABLE								
	7-CONDUCTOR CABLE								
	4-CONDUCTOR CABLE								
#4 AWG	HOT THW BLACK								
	COMMON THW WHITE								
#8 AWG	BARE BOND SOLID								
	COMMON THW WHITE								
	HOT THW BLACK								
#12 AWG (THW)	HOT SIGN LIGHTING								
	SIGN COMMON WHITE								
	HOT STREET LIGHTING								
	GROUND GREEN	1	1	1	1	1	1	1	1
	PULL TAPE	1	1	1	1	1	1	1	1
■	INTERTIE (TELEPHONE)								
▲	PRE-EMPTION								
◆	VIDEO DETECTION								

LEGEND

- ◆ PULL BOX DESIGNATION
- ① CONDUIT RUN NUMBER
- NEW CONDUIT RUN
- #7 PULL BOX
- ▣ #7 PULL BOX WITH EXTENSION

PULL BOX SCHEDULE

PULL BOX NO.	TYPE	OFFSET FROM BROADWAY	OFFSET FROM ALAMAR BLVD
◆	7	64' SOUTH	54' EAST
◆	7	60' SOUTH	47' WEST
◆	7	42' NORTH	57' WEST
◆	7	42' NORTH	61' EAST

ALL LOCATIONS SHALL BE VERIFIED & APPROVED IN THE FIELD BY THE CITY. MEASUREMENTS ARE TO THE CENTER OF PULL BOXES.

- ◆ CABLE FOR VIDEO DETECTION CAMERAS SHALL BE PER MANUFACTURER'S SPECIFICATIONS
- BELDEN 9883, OR APPROVED EQUIVALENT
- ▲ 3-M OPTICOM, MODEL 138 OPTICAL DETECTOR CABLE
- E EXISTING CONDUIT RUN

THESE DRAWINGS AND SPECIFICATIONS ARE THE SOLE PROPERTY OF WRIGHT ENGINEERING CORPORATION AND MAY NOT BE REPRODUCED OR MODIFIED FOR ANY USE WITHOUT THE EXPRESS WRITTEN PERMISSION OF WRIGHT ENGINEERING CORPORATION.

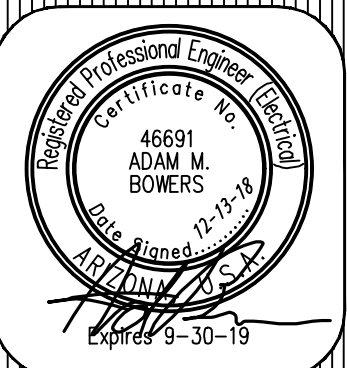
WRIGHT ENGINEERING
PROJECT NO:
18184
DESIGN BY: WTB
DRAWN BY: WTB
CHECKED BY: AMB

WRIGHT
engineering corporation
ELECTRICAL ENGINEERING AND DESIGN
165 EAST CHILTON DRIVE • CHANDLER, ARIZONA 85225
PHONE 480.497.5829 • FAX 480.497.5807
www.wrightengineering.us

PROJECT: TITLE:

AVONDALE, ARIZONA
ALAMAR PHASE 1
ALAMAR BLVD AND BROADWAY RD
TRAFFIC SIGNAL PULL BOX PLAN

NO.	DATE	SUBMITTALS/REVISIONS (DESCRIPTIONS)
1	OCT 2018	1ST SUBMITTAL
2	DEC 2018	2ND SUBMITTAL



DRAWING NO:
TS2
OF 2



H:\2018\18184-Locn Property Phase 1\18184-TS.dwg