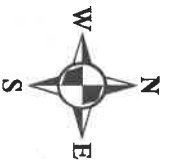


Legend



Proposed Trail

Existing Trail

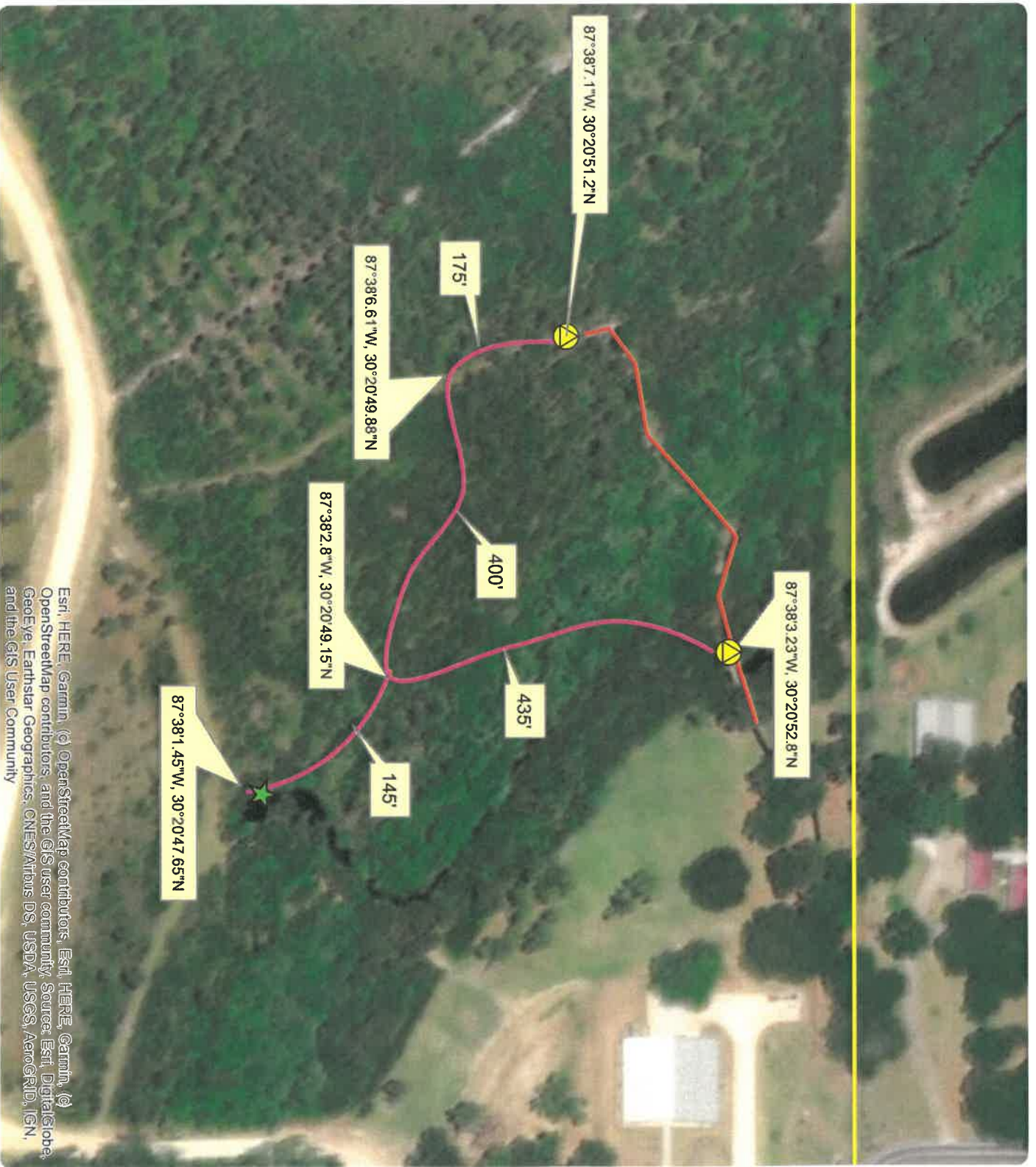
Connection

★
18' x 18'
Landing

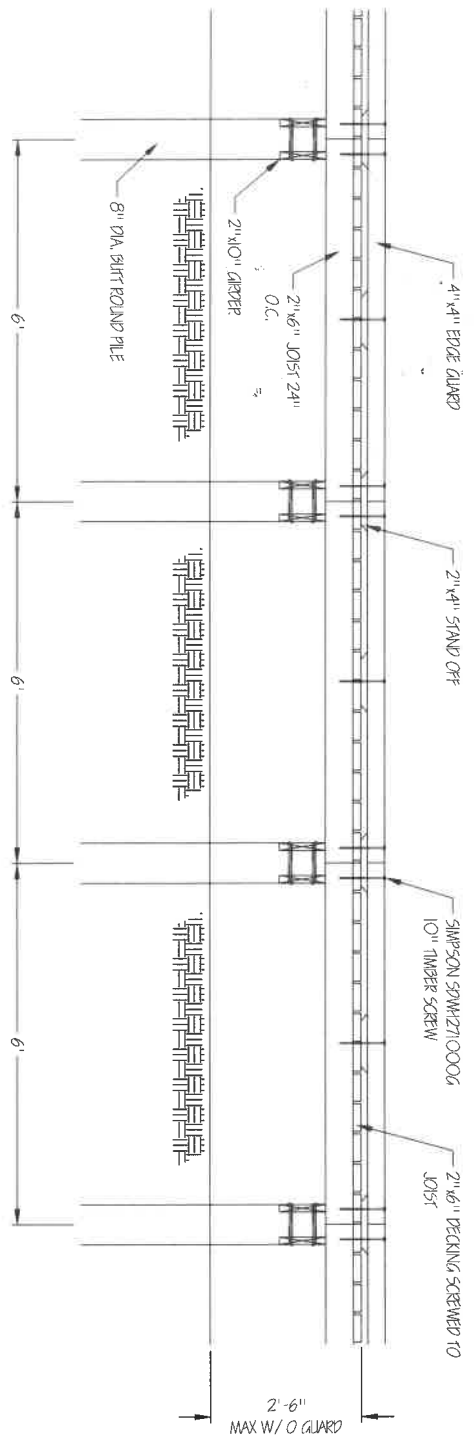
Handrails 18'



Memorial Tree Trail Expansion

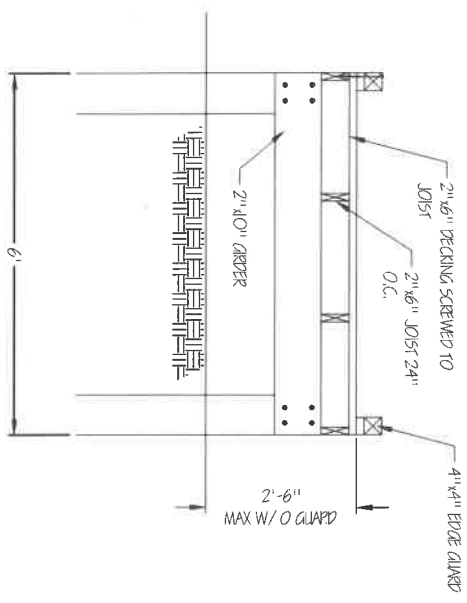


Esri, HERE, Garmin, (c) OpenStreetMap contributors, Esri, HERE, Garmin, (c) OpenStreetMap contributors, and the GIS user community, Source: Esri, DigitalGlobe, GeoEye, Earthstar Geographics, CNES/Airbus DS, USDA, USGS, AeroGRID, IGN, and the GIS User Community



TYPICAL WALK-WAY SECTION
 (FLAT OR LESS THAN 1:20 SLOPE)
 SCALE 1/2" = 1'-0"

- NOTES:**
1. ALL WOOD MEMBERS SOUTHERN YELLOW PINE #2 PRESSURE TREATED.
 2. PILES TREATED FOR GROUND CONTACT
 3. MAXIMUM HEIGHT OR WALKWAY ABOVE GRADE IS 30" WITHOUT A GUARD.
 4. MAXIMUM GRADE IS 120" WITHOUT A HANDRAIL
 5. MAXIMUM RISE BETWEEN LANDINGS IS 30 INCHES
 6. LANDINGS SHALL BE 6' x 6'
 7. MAXIMUM GRADE 112" WITH HANDRAIL
 8. MAXIMUM CROSS GRADE IS 148
 9. DESIGN LIVE LOAD 60 PSF
 10. MAXIMUM SPAN BETWEEN PILES 2X10 GIRDER - 7 FOOT
 11. MAXIMUM CLEAR SPAN WITH 2X6 JOIST @ 24" CENTERS 6 FOOT.
 @ 16" CENTERS 7 FOOT.
 @ 12" CENTERS 8 FOOT.
 12. MAXIMUM CLEAR SPAN WITH 2X8 JOIST @ 16" CENTERS 9 FOOT.
 @ 12" CENTERS 11 FOOT.

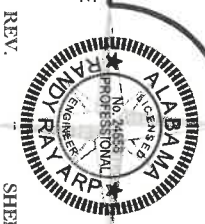


TYPICAL WALK-WAY SECTION
 (FLAT OR LESS THAN 1:20 SLOPE)
 SCALE 1/2" = 1'-0"



GRAHAM CREEK NATURE PRESERVE
 ACCESSIBLE NATURE PATH

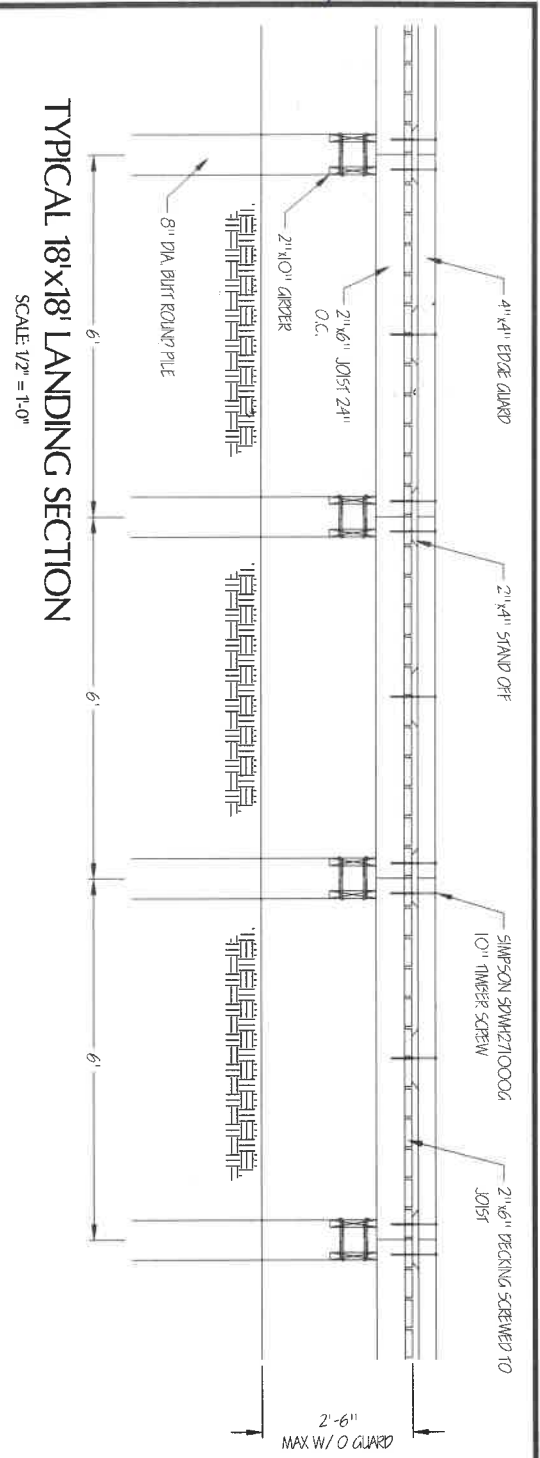
PROJECT 160204
 DATE 06-17-2016



REV. ---
 SHEET 4 OF 7

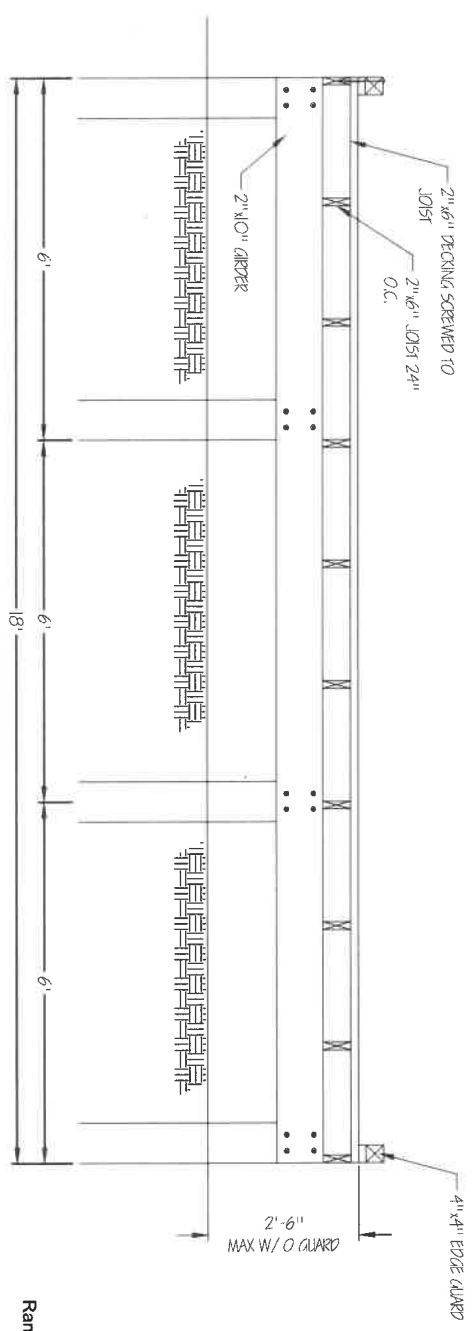
L.E. STIFFLER, ENGINEER LLC
 309 W. LAUREL AVE.
 FOLEY AL 36535
 251-943-8501
 251-943-8441 FAX
 randy@lesengr.com

Digitally signed by Randy R. App
 DN: cn=Randy R. App, o=Lesengr.com, email=randy@lesengr.com, c=US
 Date: 2016.06.17 10:25:00 -0400



TYPICAL 18'X18' LANDING SECTION

SCALE: 1/2" = 1'-0"



TYPICAL 18'X18' LANDING SECTION

SCALE: 1/2" = 1'-0"

- NOTES:**
1. ALL WOOD MEMBERS SOUTHERN YELLOW PINE #2 PRESSURE TREATED.
 2. PILES TREATED FOR GROUND CONTACT.
 3. MAXIMUM HEIGHT OR WALKWAY ABOVE GRADE IS 30" WITHOUT A GUARD.
 4. MAXIMUM GRADE IS E20 WITHOUT A HANDRAIL.
 5. MAXIMUM RISE BETWEEN LANDINGS IS 30 INCHES.
 6. LANDINGS SHALL BE 6' x 6'.
 7. MAXIMUM GRADE E12 WITH HANDRAIL.
 8. MAXIMUM CROSS GRADE IS 1:48.
 9. DESIGN LIVE LOAD 60 PSF.
 10. MAXIMUM SPAN BETWEEN PILES 2X10 GIRDER - 7 FOOT.
 11. MAXIMUM CLEAR SPAN WITH 2x6 JOIST @ 24" CENTERS 6 FOOT.
 12. MAXIMUM CLEAR SPAN WITH 2x8 JOIST @ 12" CENTERS 8 FOOT.
 13. MAXIMUM CLEAR SPAN WITH 2x8 JOIST @ 16" CENTERS 9 FOOT.
 14. MAXIMUM CLEAR SPAN WITH 2x8 JOIST @ 12" CENTERS 11 FOOT.



GRAHAM CREEK NATURE PRESERVE
ACCESSIBLE NATURE PATH

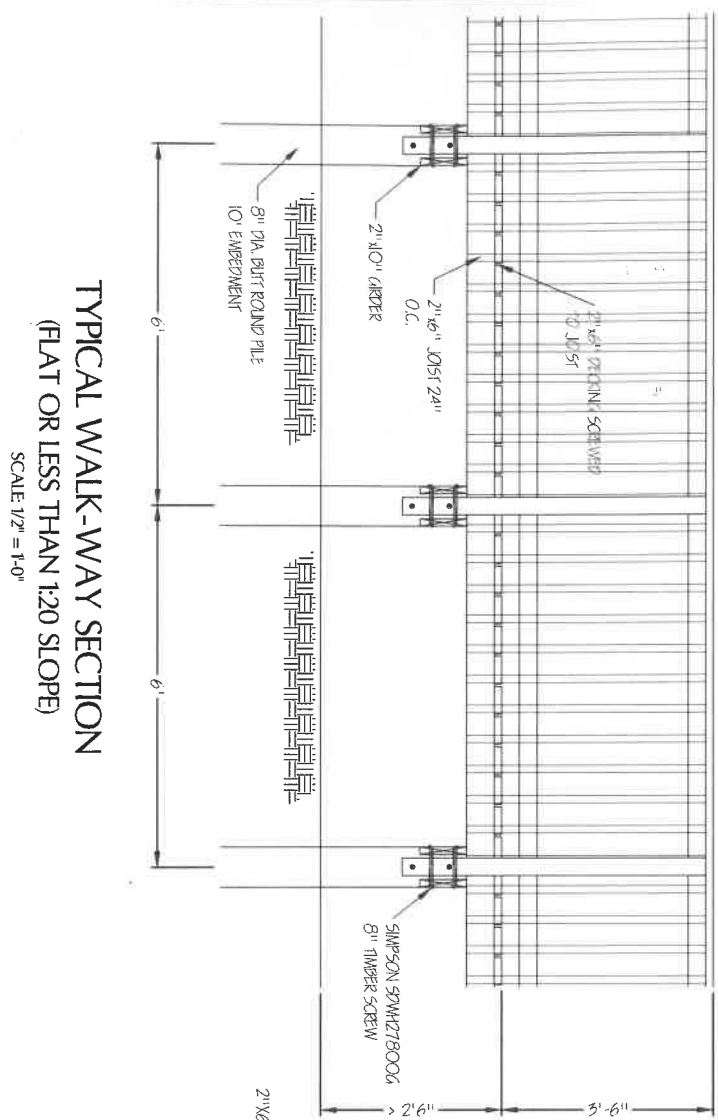
PROJECT: 160204
DATE: 06-17-2016

REV: --
SHEET: 7 OF 7

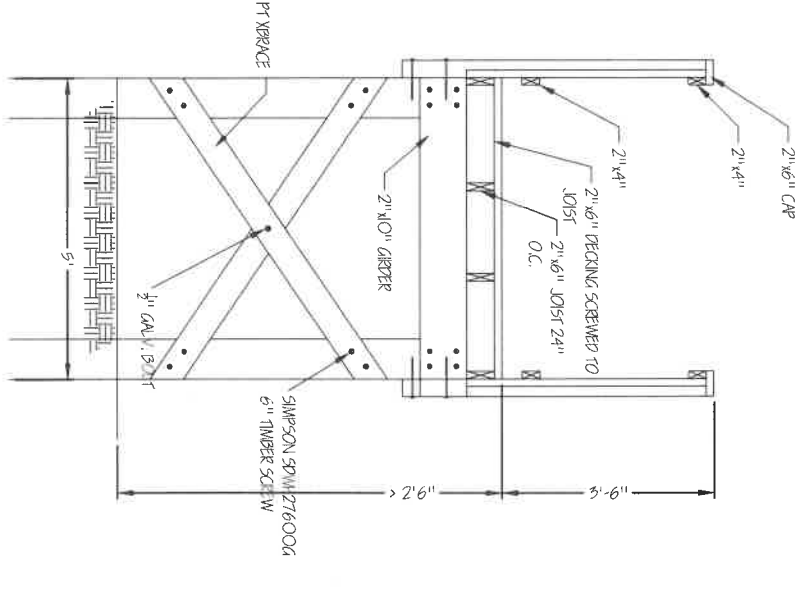
Detailed prepared by Randy
Randy R. App
P.E., C.E., S.E.
E: randy@lesengr.com
F: 251-943-8501
L: 309 W. LAUREL AVE.
FOLEY, AL 36535
DATE: 2016.05.18
223643-0007



L.E. STIFFLER, ENGINEER LLC
309 W. LAUREL AVE.
FOLEY AL 36535
251-943-8501
251-943-8441 FAX
randy@lesengr.com



TYPICAL WALK-WAY SECTION
 (FLAT OR LESS THAN 1:20 SLOPE)
 SCALE 1/2" = 1'-0"



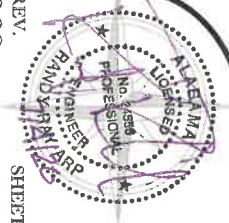
TYPICAL WALK-WAY SECTION
 (FLAT OR LESS THAN 1:20 SLOPE)
 SCALE 1/2" = 1'-0"

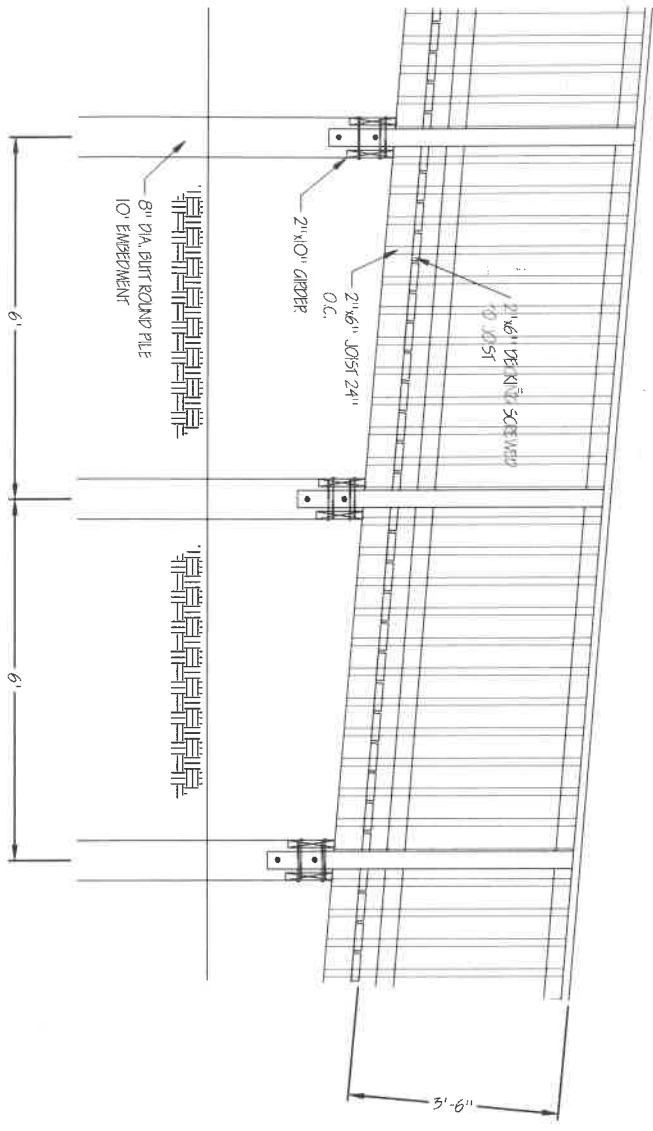


GRAHAM CREEK NATURE PRESERVE
 ACCESSIBLE PATH / BRIDGE
 PROJECT 191009 DATE 03-01-2020 REV. 7.3.20

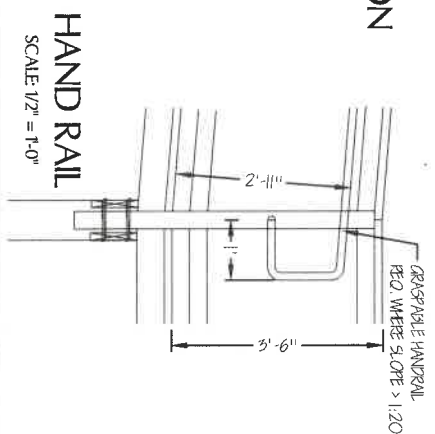
9 OF 10 SHEET

L.E. STIFFLER, ENGINEER LLC
 309 W. LAUREL AVE.
 FOLEY AL 36535
 855-943-8501
 251-262-2474 FAX
 randy@lesengr.com

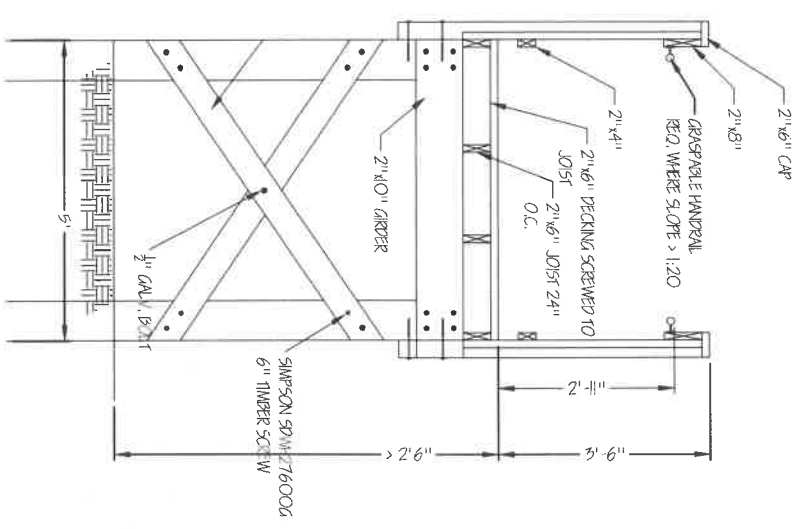




TYPICAL WALK-WAY SECTION
(1:20 TO 1:12 SLOPE)
SCALE: 1/2" = 1'-0"



HAND RAIL
SCALE: 1/2" = 1'-0"



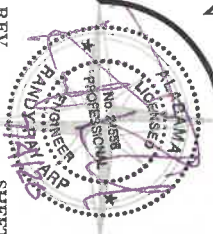
TYPICAL WALK-WAY SECTION
(1:20 TO 1:12 SLOPE)
SCALE: 1/2" = 1'-0"



GRAHAM CREEK NATURE PRESERVE
ACCESSIBLE PATH / BRIDGE

PROJECT: 1910009
DATE: 03-01-2020
REV: 7.3.20

SHEET: 10 OF 10



L.E. STIFFLER, ENGINEER LLC
309 W. LAUREL AVE.
FOLEY AL 36535
855-943-8501
251-262-2474 FAX
randy@les engr.com