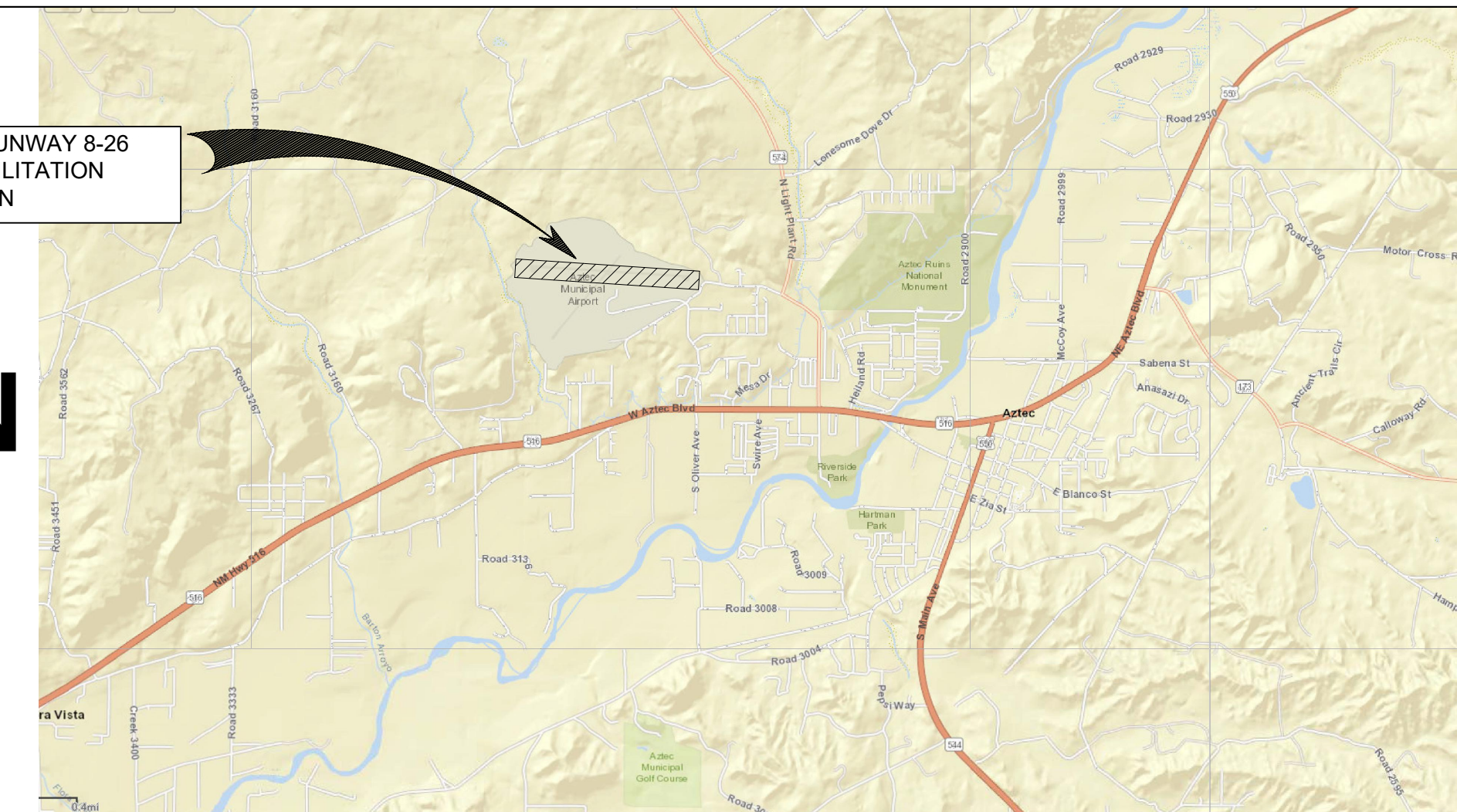


CONSTRUCTION PLANS FOR AZTEC AIRPORT RUNWAY 8-26 PAVEMENT REHABILITATION AIP 3-35-0056-006-2020

OWNER / SPONSOR: CITY OF AZTEC, NEW MEXICO

AZTEC AIRPORT RUNWAY 8-26
PAVEMENT REHABILITATION
PROJECT LOCATION



VICINITY MAP



INDEX

SHEET NO	DESCRIPTION
1	COVER AND INDEX SHEET
2	GENERAL NOTES
3	SURVEY CONTROL
4	SUMMARY OF QUANTITIES
5	CONSTRUCTION SAFETY PHASING PLAN
6	OVERALL PLAN
7	MARKING PLANS
8	MARKING PLANS
9	MISCELLANEOUS DETAILS

CALL BEFORE YOU DIG
FOR UTILITY LOCATES
DIAL 811 OR
1-800-321-ALERT

ENGINEERS STAMP & SIGNATURE



AZTEC MUNICIPAL AIRPORT (N19)
AZTEC AIRPORT RUNWAY 8-26 PAVEMENT REHABILITATION

COVER AND INDEX SHEET

BHI PROJECT NO. 20210036 DWG NO. G-1 SHEET 1 OF 9

NOTICE OF EXTENDED PAY PROVISIONS
THIS CONTRACT ALLOWS THE OWNER TO MAKE PAYMENT WITHIN
45 DAYS AFTER SUBMISSION OF AN UNDISPUTED REQUEST FOR
PAYMENT

Bohannon & Huston
www.bhinc.com 800.877.5332



NOTICE OF EXTENDED PAY PROVISIONS
THIS CONTRACT ALLOWS THE OWNER TO MAKE PAYMENT
WITHIN 45 DAYS AFTER SUBMISSION OF AN UNDISPUTED
REQUEST FOR PAYMENT

BENCH MARKS

BENCH MARK LINE 1
BENCH MARK LINE 2
BENCH MARK LINE 3
BENCH MARK LINE 4
BENCH MARK LINE 5
BENCH MARK LINE 6
BENCH MARK LINE 7
BENCH MARK LINE 8
BENCH MARK LINE 9

ENGINEER'S SEAL

AS-BUILT INFORMATION

CONTRACTOR	DATE
WORK STAMPED BY	DATE
INSPECTORS ACCEPTANCE BY	DATE
FIELD VERIFICATION BY	DATE
DRAWINGS CORRECTED BY	DATE

REVISIONS

NO.	DATE	BY

Project Control Specifications:

Units:	US Survey Foot
Horizontal Datum:	NAD_83(2011)(EPOCH:2010.0000)
Vertical Datum:	NAVD83
Geoid Model:	GEOID12A
Projection:	Transverse Mercator
State Plane and/or UTM Zone:	New Mexico Central Zone (3003)
Basis of Bearing:	Grid Bearings
Project Combined Factor:	0.99964260 based on BH 19-067-01
Modification Method Used:	Scaled State Plane coordinates about origin (0,0) no truncation
Field Methodology:	OPUS/RTK Solution and Total Station
Equipment Used:	Trimble GPS Equipment (R8 Frequency Receiver) and Trimble S5-S3 DR Plus
Control Set Date:	October 1, 2018
Observation Date:	October 1 thru 3, 2018
Adjustment/ Publication Date:	October 10, 2018

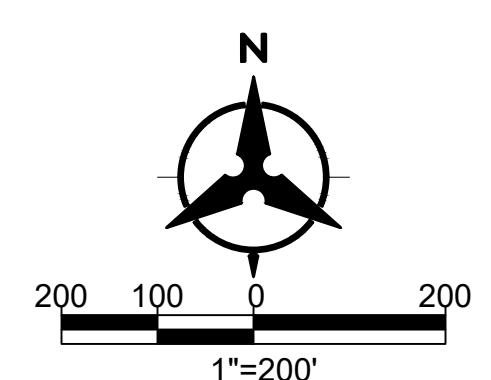
Adjusted Coordinate Listing:

See Attached Control Datasheets

POINT	LATITUDE	LONGITUDE	ELLIPSOID (US FT)	GEOID	MODIFIED EASTING	MODIFIED NORTHING	ORTHOMETRIC HEIGHT (US FT)	DESCRIPTION
BH 19-067-01	N 36° 50' 13.65668"	W 108° 01' 41.52642"	5809.498	GEOID 12A	2667020.518	2124854.217	5877.866	2" ALUMINUM CAP
BH 19-067-02	N 36° 50' 07.14288"	W 108° 01' 40.50386"	5805.611	GEOID 12A	2667102.327	2124195.087	5874.005	2" ALUMINUM CAP

Geospatial Positional Accuracy Report:

POINT	HORIZONTAL ACCURACY	VERTICAL ACCURACY
BH 19-067-01	0.0707	0.0951
BH 19-067-02	0.0460	0.0630



Bohannon & Huston
www.bhinc.com 800.877.5332

**AZTEC MUNICIPAL AIRPORT (N19)
AZTEC AIRPORT RUNWAY 8-26 PAVEMENT REHABILITATION**

SURVEY CONTROL

BHI PROJECT NO.	20210036	DWG NO.	G-3	SHEET	3	OF	9
-----------------	----------	---------	-----	-------	---	----	---

Thu, 7 May 2020 - 8:33 pm. Plotted by: NSALAZAR
P:\20210036\TRANS\Design\Plan Production\Plans\20210036SC01.dwg

**AZTEC MUNICIPAL AIRPORT
 RUNWAY 8-26 PAVEMENT REHABILITATION
 AIP 3-35-006-2020**

BID	SPECIFICATION	ITEM	UNIT	ESTIMATED
ITEM NO.	ITEM NUMBER	DESCRIPTION	TYPE	QUANTITY
1	A-101-5.1	CONSTRUCTION SURVEYING BY CONTRACTOR	LS	1
2	C-105-6.1	MOBILIZATION	LS	1
3	SP-1	SAFETY PLAN COMPLIANCE	LS	1
4	P-101-5.1	MARKING REMOVAL	SF	16,300
5	P-608R-8.1	ASPHALT SURFACE TREATMENT	SY	34,500
6	P-608R-8.2	RUNWAY AND HIGH SPEED EXIT TAXIWAY FRICTION TESTING	LS	1
7	P-620-5.1b	MARKING	SF	8,200
8	P-620-5.1c	REFLECTIVE MEDIA	LB	800

NOTICE OF EXTENDED PAY PROVISIONS
 THIS CONTRACT ALLOWS THE OWNER TO MAKE PAYMENT
 WITHIN 45 DAYS AFTER SUBMISSION OF AN UNDISPUTED
 REQUEST FOR PAYMENT

BENCH MARKS

BENCH MARK LINE 1
BENCH MARK LINE 2
BENCH MARK LINE 3
BENCH MARK LINE 4
BENCH MARK LINE 5
BENCH MARK LINE 6
BENCH MARK LINE 7
BENCH MARK LINE 8
BENCH MARK LINE 9



AS-BUILT INFORMATION

CONTRACTOR	DATE
WORK STARTED BY	DATE
INSPECTORS ACCEPTANCE BY	DATE
FIELD VERIFICATION BY	DATE
DRAWINGS CORRECTED BY	DATE

REVISIONS

NO.	DATE	BY

DESIGN

DESIGNED BY	MDH
CHECKED BY	MDH
DRAWN BY	NJS



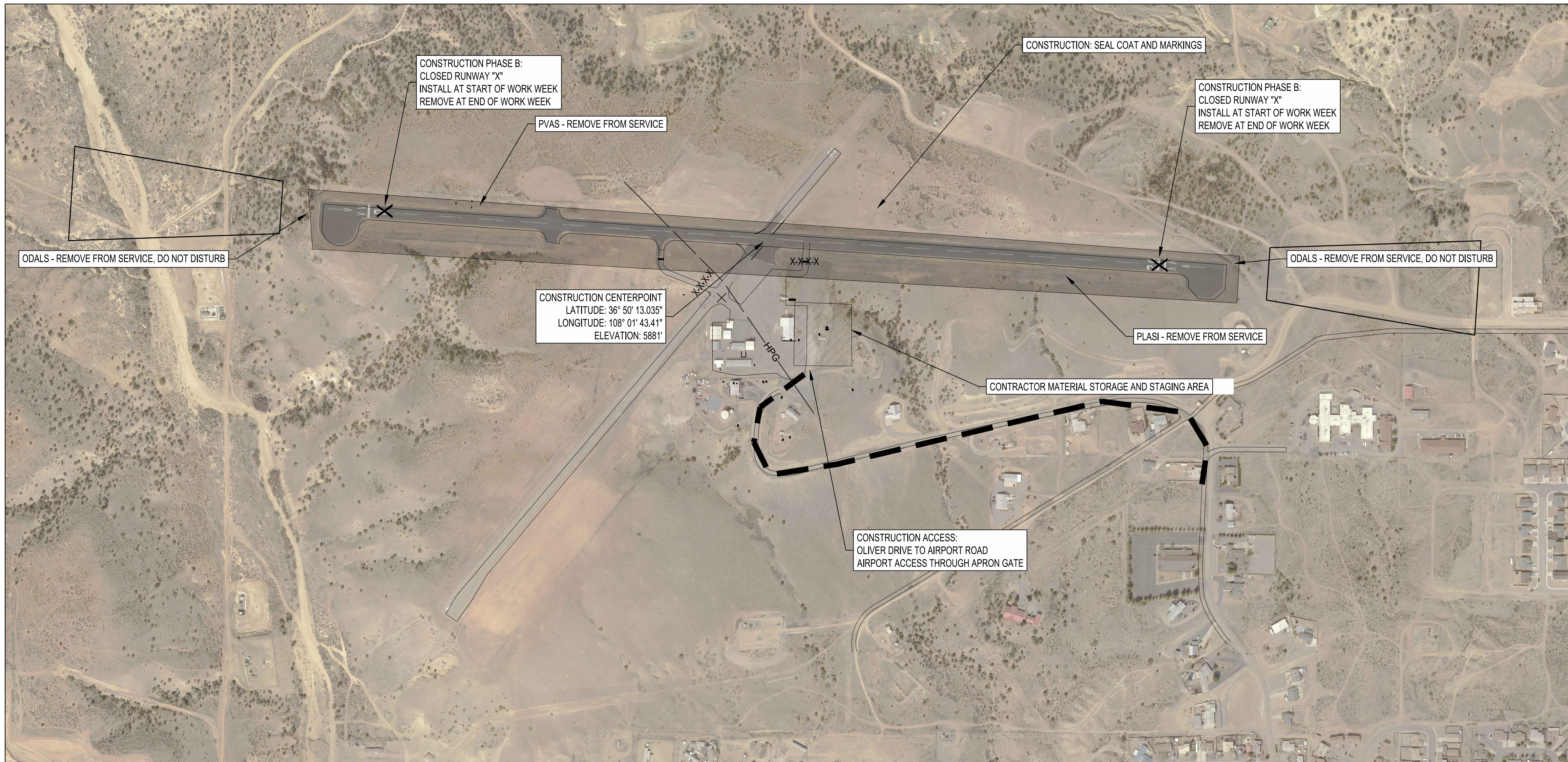
**AZTEC MUNICIPAL AIRPORT (N19)
 AZTEC AIRPORT RUNWAY 8-26 PAVEMENT REHABILITATION**

SUMMARY OF QUANTITIES

BHI PROJECT NO.	20210036	DWG NO.	G-4	SHEET	4	OF	9
-----------------	----------	---------	-----	-------	---	----	---

Thu, 7 May 2020 - 8:33 pm. Plotted by: NSALAZAR
 P:\20210036\TRANS\Design\Plan Production\Plans\20210036SQ11.dwg





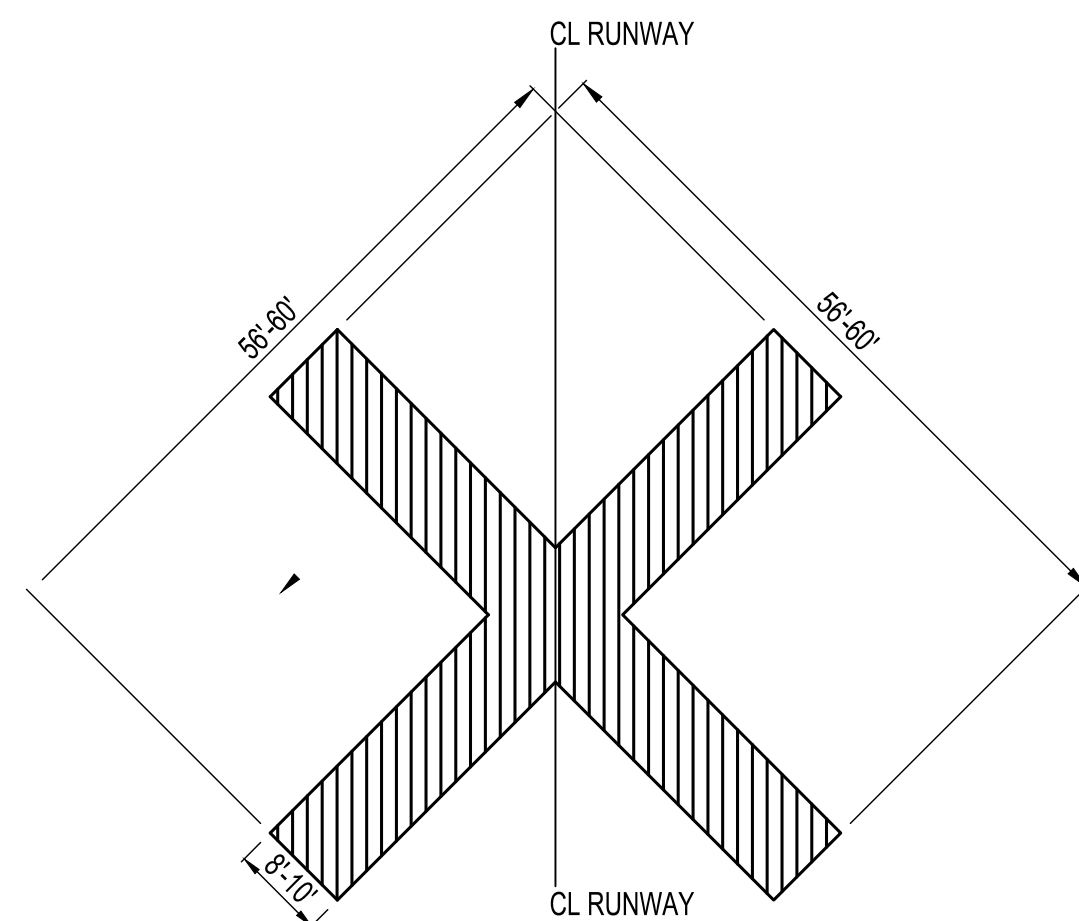
RUNWAY 8-26 TO BE CLOSED DURING CONSTRUCTION
 WORK CONSISTS OF A SEAL COAT, FOLLOWED BY A CURE PERIOD, THEN AIRFIELD/RUNWAY MARKINGS.

THERE ARE REFLECTIVE EDGE AND THRESHOLD MARKERS THAT ARE NOT TO BE DISTURBED. THESE MARKERS MAY BE REMOVED AND REINSTALLED IF NEEDED FOR MARKING INSTALLATION.

EACH RUNWAY END HAS AN ODAL (APPROACH LIGHT) SET. THESE ARE NOT TO BE DISTURBED.

LEGEND

- X-X-X-X LOW PROFILE BARRICADES
- CONTRACTOR ACCESS ROUTE



CLOSED RUNWAY 'X' NOTES

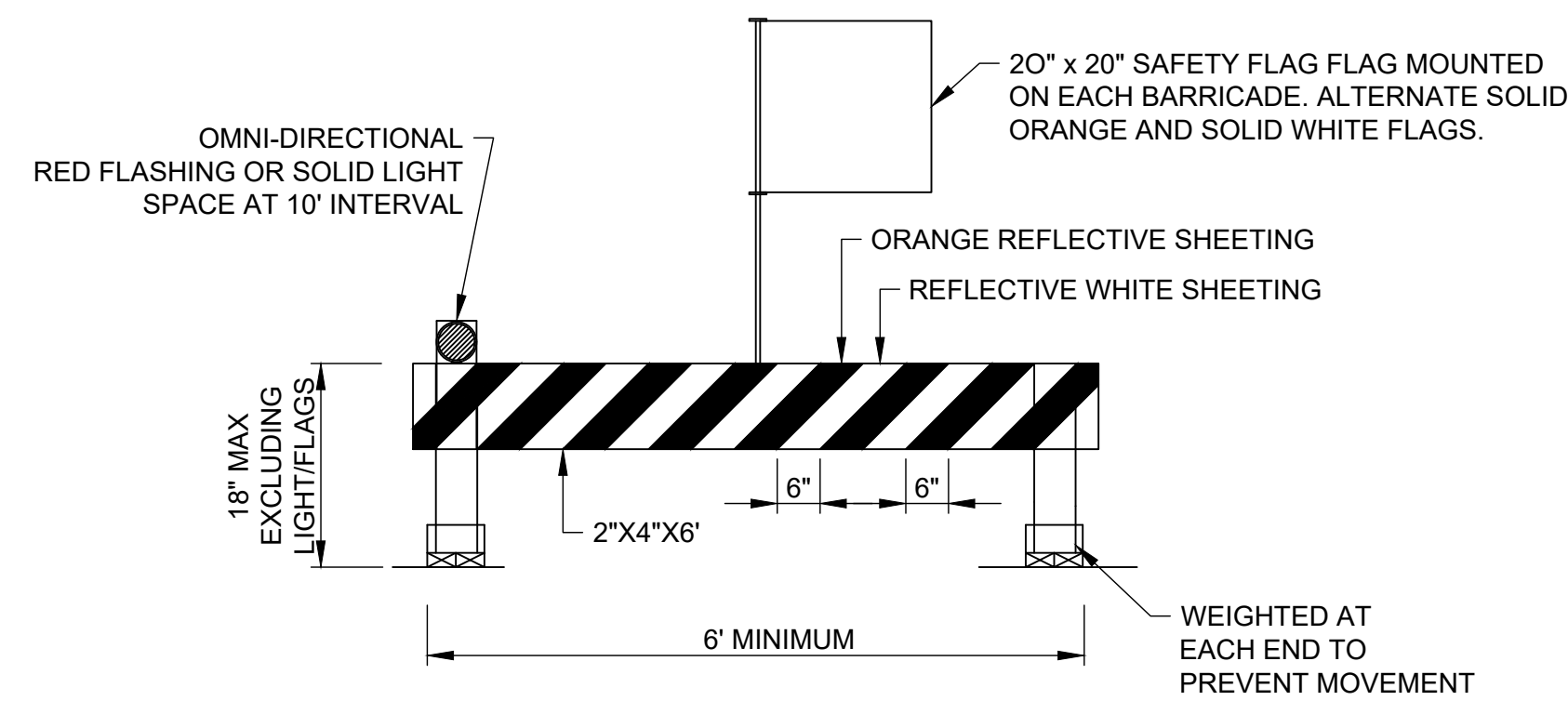
1. THE CONTRACTOR SHALL PLACE TEMPORARY CLOSED RUNWAY MARKERS (2 REQ'D) OVER THE RUNWAY END AS DIRECTED BY THE ENGINEER. MARKERS SHALL BE YELLOW AND FABRICATED OF PLYWOOD, SNOW FENCE, FABRIC OR OTHER SUITABLE MATERIAL SECURELY FASTENED OR BALLASTED OVER THE RUNWAY NUMERALS. COST OF THE MARKERS IS INCIDENTAL TO THE WORK. MARKERS SHALL NOT BE MOVED UNTIL AUTHORIZED BY ENGINEER.
2. THE CONTRACTOR CAN USE LIGHTED VISUAL AIDS IN LIEU OF THE DETAILED CLOSED RUNWAY 'X' TO INDICATE RUNWAY CLOSURE. THE LIGHTED VISUAL AID MUST BE IN ACCORDANCE WITH FAA AC 150/5345-55 "LIGHTED VISUAL AID TO INDICATE TEMPORARY RUNWAY CLOSURE."
3. THE CLOSED RUNWAY 'X' CAN BE PLACED OFF OF THE PAVEMENT DURING THE CONSTRUCTION AND INITIAL SEAL COAT/MARKING CURE PERIODS.

TEMPORARY RUNWAY CLOSED MARKER DETAIL

SCALE: N.T.S.

1

G-5



LOW-PROFILE BARRICADE NOTES

1. THE CONTRACTOR IS REQUIRED TO PROVIDE, INSTALL, MAINTAIN THE LOW-PROFILE BARRICADES.
2. PLACE BARRICADES AS INDICATED IN THE CSPP PLAN OR AS DIRECTED BY THE RPR/OWNER. SPACING PER THE CSPP.
3. LIGHTS ARE MOUNTED TO AND SPACED ALONG THE BARRICADES AT INTERVALS OF NOT LESS THAN 10 FEET.
4. BARRICADES MAY BE SUPPLEMENTED WITH ALTERNATING ORANGE AND WHITE FLAGS AT LEAST 20 BY 20 INCH (50 BY 50 CM) SQUARE AND SECURELY FASTENED TO ELIMINATE FOD.
5. ALL BARRICADES ADJACENT TO ANY OPEN RUNWAY OR TAXIWAY / TAXILANE SAFETY AREA, OR APRON MUST BE AS LOW AS POSSIBLE TO THE GROUND, AND NO MORE THAN 18 INCHES HIGH, EXCLUSIVE OF SUPPLEMENTARY LIGHTS AND FLAGS.
6. BARRICADES MUST BE OF LOW MASS; EASILY COLLAPSIBLE UPON CONTACT WITH AN AIRCRAFT OR ANY OF ITS COMPONENTS; AND WEIGHTED OR STURDILY ATTACHED TO THE SURFACE TO PREVENT DISPLACEMENT FROM PROP WASH, JET BLAST, WING VORTEX, AND OTHER SURFACE WIND CURRENTS.
7. IF AFFIXED TO THE SURFACE, THEY MUST BE FRANGIBLE AT GRADE LEVEL OR AS LOW AS POSSIBLE, BUT NOT TO EXCEED 3 INCH (7.6 CM) ABOVE THE GROUND.
8. DETAIL IS FOR HOME BUILT BARRICADE. COMMERCIAL AVIATION BARRICADES MAY BE USED.

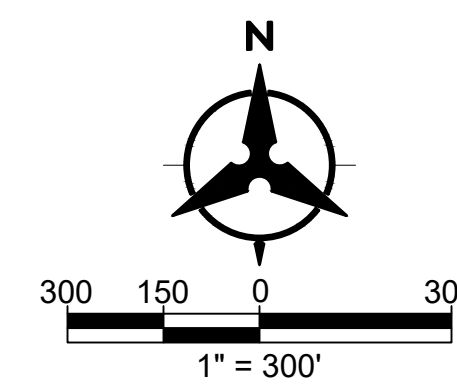
LOW PROFILE BARRICADE DETAIL

SCALE: N.T.S.

2

G-5

CSPP STUDIED UNDER FAA ASNs:



NOTICE OF EXTENDED PAY PROVISIONS
 THIS CONTRACT ALLOWS THE OWNER TO MAKE PAYMENT WITHIN 45 DAYS AFTER SUBMISSION OF AN UNDISPUTED REQUEST FOR PAYMENT

BENCH MARKS

BENCH MARK LINE 1
BENCH MARK LINE 2
BENCH MARK LINE 3
BENCH MARK LINE 4
BENCH MARK LINE 5
BENCH MARK LINE 6
BENCH MARK LINE 7
BENCH MARK LINE 8
BENCH MARK LINE 9

ENGINEER'S SEAL



AS-BUILT INFORMATION

CONTRACTOR	DATE
WORK STARTED BY	DATE
INSPECTOR'S ACCEPTANCE BY	DATE
FIELD VERIFICATION BY	DATE
DRAWINGS CORRECTED BY	DATE

REVISIONS

NO.	DATE	BY

DESIGN

DESIGNED BY	CHECKED BY	DRAWN BY
MDH	MDH	NJS

Bohannon Huston
 www.bhinc.com 800.877.5332

**AZTEC MUNICIPAL AIRPORT (N19)
 AZTEC AIRPORT RUNWAY 8-26 PAVEMENT REHABILITATION**

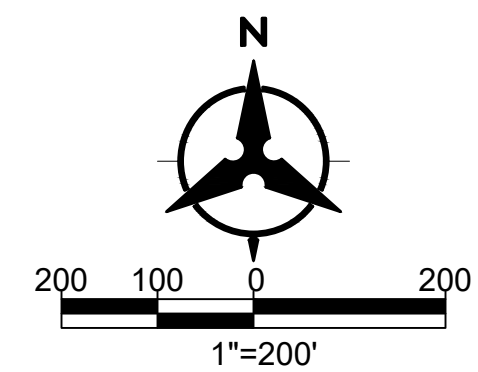
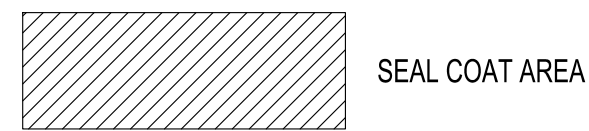
CONSTRUCTION SAFETY PHASING PLAN

BHI PROJECT NO. 20210036 DWG NO. G-5 SHEET 5 OF 9





SCOPE OF WORK:
 REMOVE RUNWAY AND TAXIWAY MARKINGS
 SEAL COAT RUNWAY
 REMARK RUNWAY AND TAXIWAYS



Bohannon & Huston
 www.bhinc.com 800.877.5332

**AZTEC MUNICIPAL AIRPORT (N19)
 AZTEC AIRPORT RUNWAY 8-26 PAVEMENT REHABILITATION**

OVERALL PLAN

BHI PROJECT NO.	20210036	DWG NO.	G-6	SHEET	6	OF	9
-----------------	----------	---------	-----	-------	---	----	---

NOTICE OF EXTENDED PAY PROVISIONS
 THIS CONTRACT ALLOWS THE OWNER TO MAKE PAYMENT
 WITHIN 45 DAYS AFTER SUBMISSION OF AN UNDISPUTED
 REQUEST FOR PAYMENT

BENCH MARKS	
BENCH MARK LINE 1	
BENCH MARK LINE 2	
BENCH MARK LINE 3	
BENCH MARK LINE 4	
BENCH MARK LINE 5	
BENCH MARK LINE 6	
BENCH MARK LINE 7	
BENCH MARK LINE 8	
BENCH MARK LINE 9	

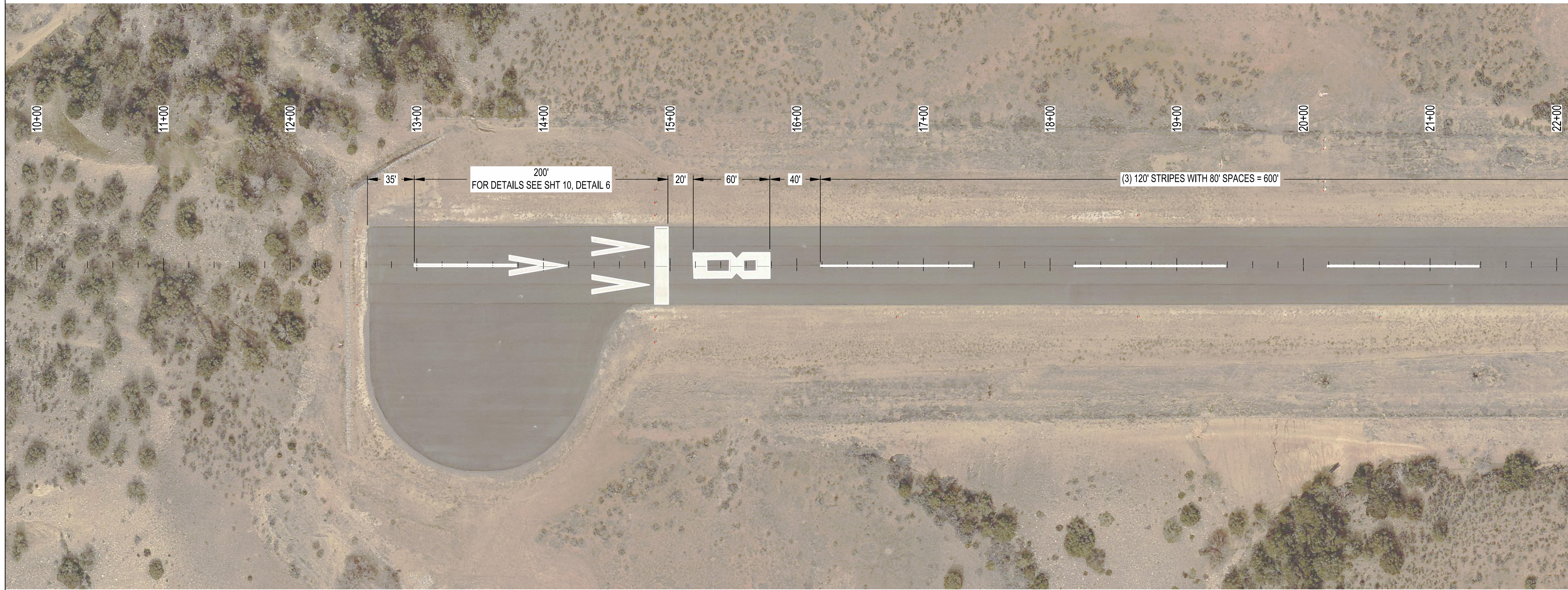
ENGINEER'S SEAL

AS-BUILT INFORMATION	
CONTRACTOR	DATE
WORK STARTED BY	DATE
INSPECTORS ACCEPTANCE BY	DATE
FIELD VERIFICATION BY	DATE
DRAWINGS CORRECTED BY	DATE

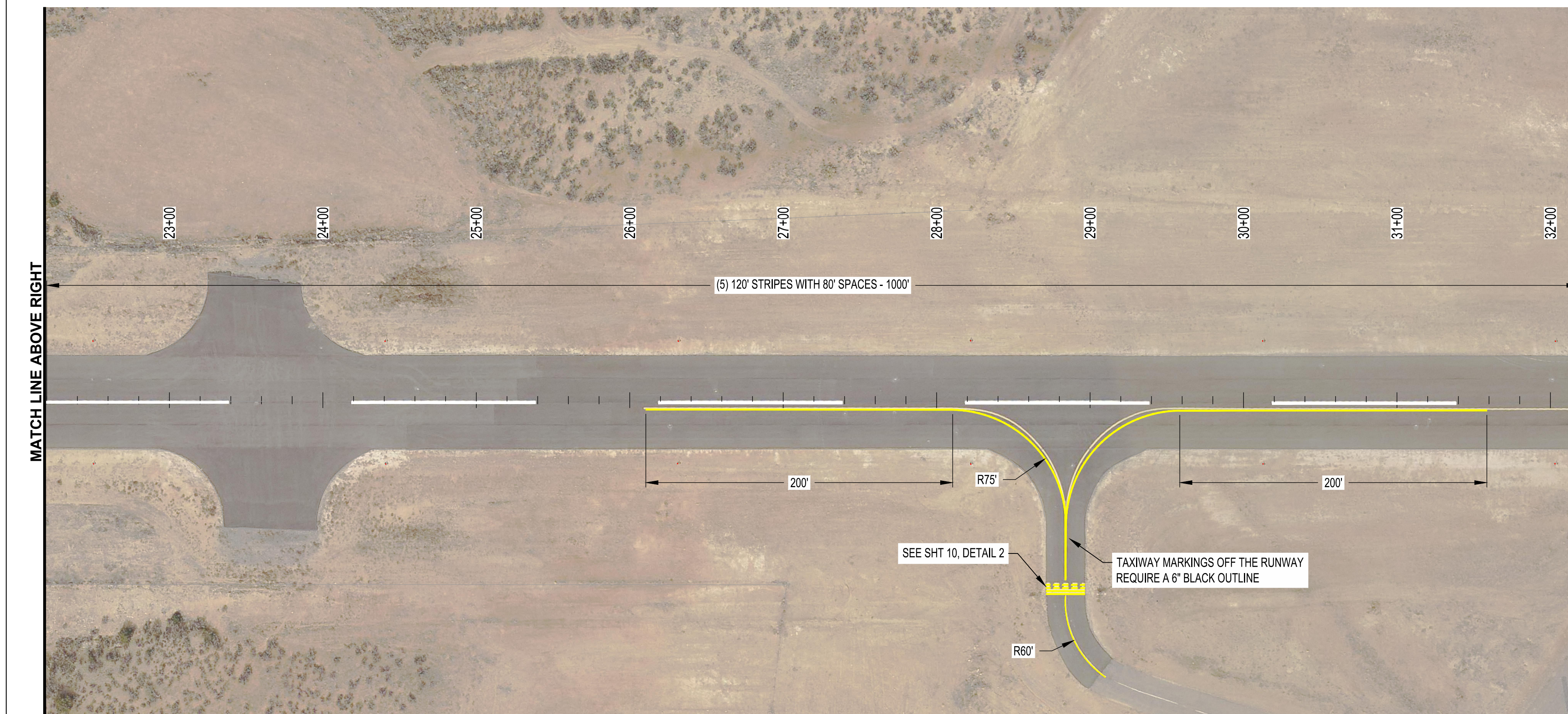
REVISIONS	
NO.	DATE

DESIGN	
DESIGNED BY	MDH
CHECKED BY	MDH
DRAWN BY	NJS





MATCH LINE BELOW LEFT



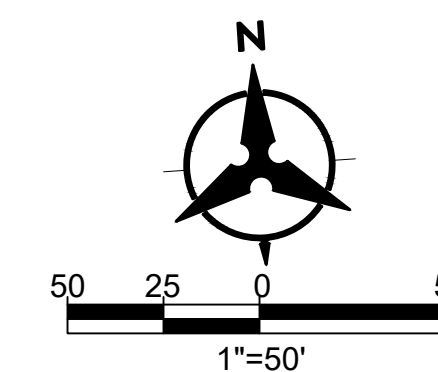
MATCH LINE SHEET 8

MARKING NOTES:

- ALL PAINT TO RECEIVE REFLECTIVE BEADS
- CENTERLINE STRIPE 12" WIDE
- TAXIWAY CENTERLINE 6" WIDE
- 6" BLACK OUTLINE REQUIRED ON TAXIWAY MARKINGS NOT ON THE RUNWAY.
- USE THE PLAN DIMENSIONS FOR THE MARKING LAYOUT

MARKING REMOVAL NOTES:

- REMOVE ALL MARKINGS ON RUNWAY AND TURN-AROUNDS
- REMOVE TAXIWAY HOLD POSITION MARKINGS AND TAXIWAY CENTERLINE TO THE RUNWAY.



Bohannon Huston
www.bhinc.com 800.877.5332

AZTEC MUNICIPAL AIRPORT (N19)			
AZTEC AIRPORT RUNWAY 8-26 PAVEMENT REHABILITATION			
MARKING PLANS			
BHI PROJECT NO.	20210036	DWG NO.	M-1
SHEET	7	OF	9

NOTICE OF EXTENDED PAY PROVISIONS
THIS CONTRACT ALLOWS THE OWNER TO MAKE PAYMENT
WITHIN 45 DAYS AFTER SUBMISSION OF AN UNDISPUTED
REQUEST FOR PAYMENT

BENCH MARKS	
BENCH MARK LINE 1	
BENCH MARK LINE 2	
BENCH MARK LINE 3	
BENCH MARK LINE 4	
BENCH MARK LINE 5	
BENCH MARK LINE 6	
BENCH MARK LINE 7	
BENCH MARK LINE 8	
BENCH MARK LINE 9	

ENGINEER'S SEAL

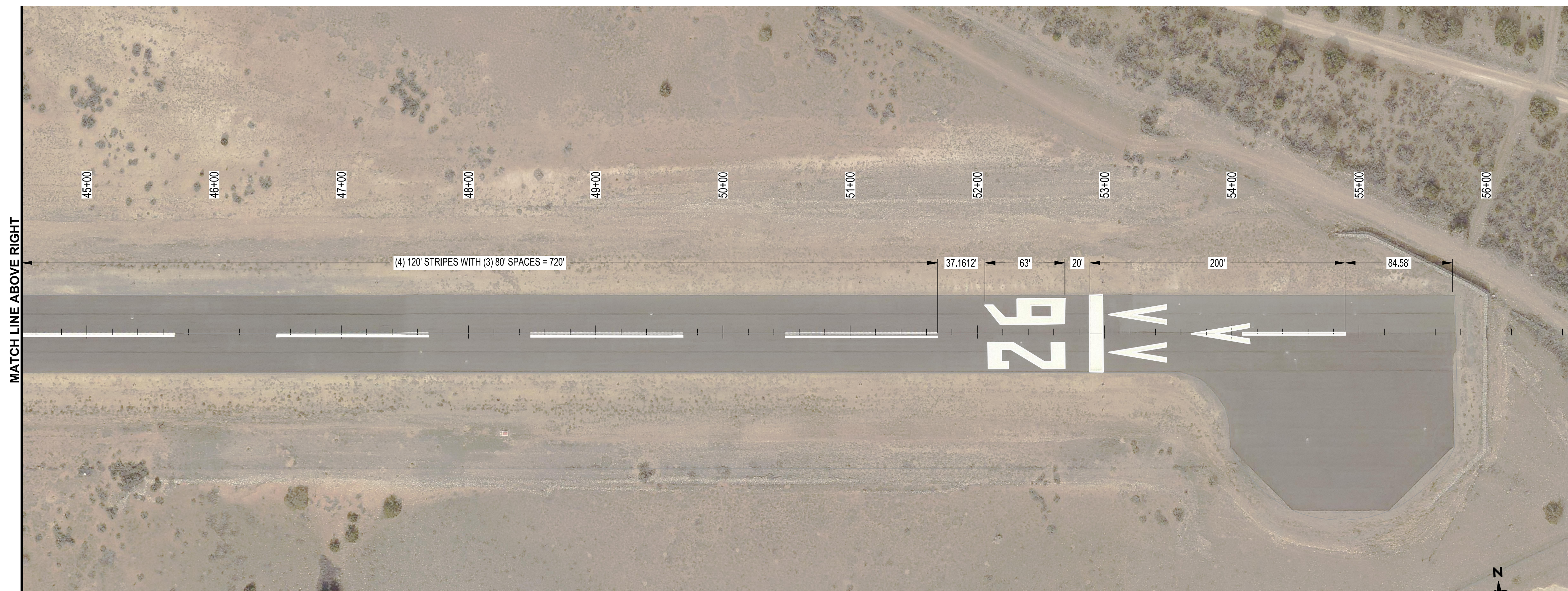
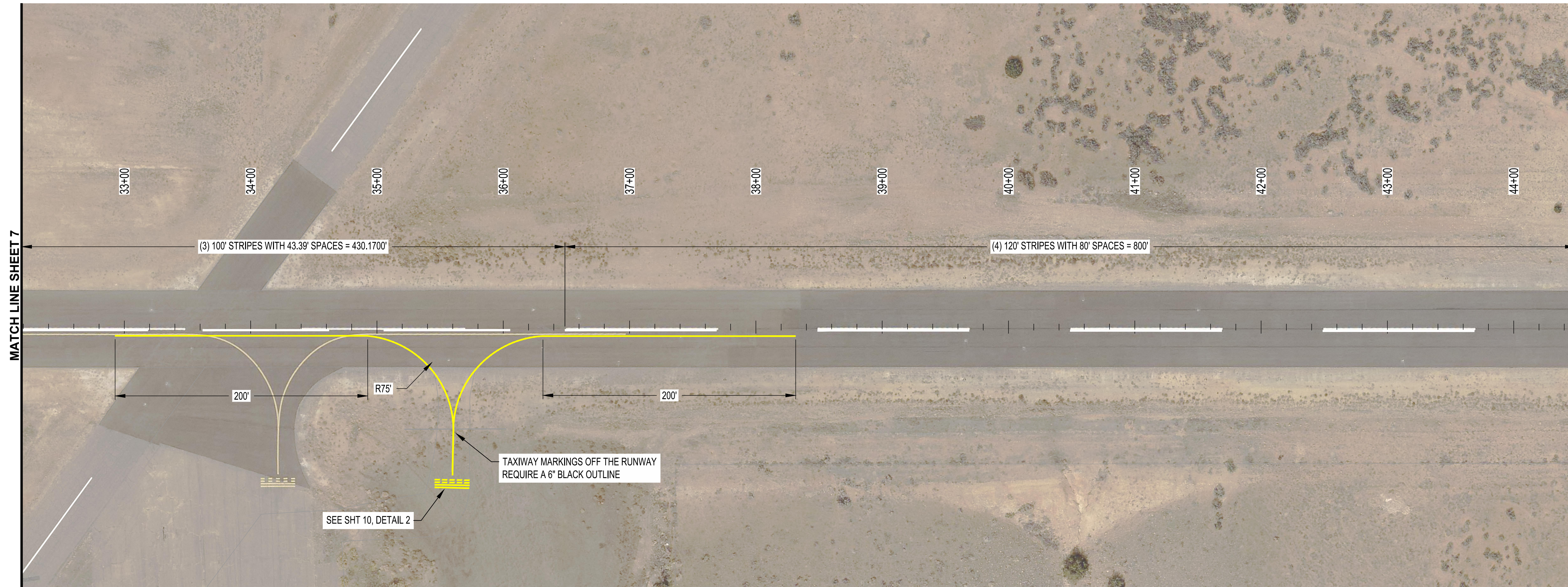


AS-BUILT INFORMATION	
CONTRACTOR	DATE
WORK STARTED BY	DATE
INSPECTOR'S ACCEPTANCE BY	DATE
FIELD VERIFICATION BY	DATE
DRAWINGS CORRECTED BY	DATE

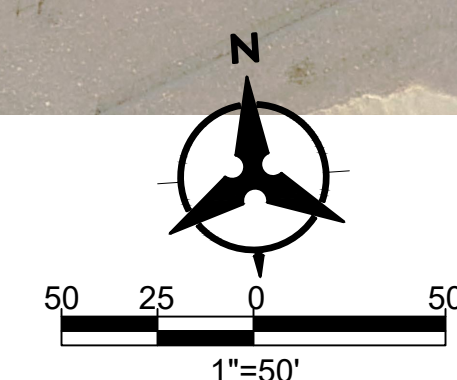
REVISIONS	
NO.	DATE
BY	

DESIGN	NO.	DATE
DESIGNED BY	MDH	
CHECKED BY	MDH	
DRAWN BY	NJS	





- MARKING NOTES:**
- ALL PAINT TO RECEIVE REFLECTIVE BEADS
 - CENTERLINE STRIPE 12" WIDE
 - TAXIWAY CENTERLINE 6" WIDE
 - 6" BLACK OUTLINE REQUIRED ON TAXIWAY MARKINGS NOT ON THE RUNWAY.
 - USE THE PLAN DIMENSIONS FOR THE MARKING LAYOUT
- MARKING REMOVAL NOTES:**
- REMOVE ALL MARKINGS ON RUNWAY AND TURN-AROUNDS
 - REMOVE TAXIWAY HOLD POSITION MARKINGS AND TAXIWAY CENTERLINE TO THE RUNWAY.



Bohannon Huston
www.bhinc.com 800.877.5332

AZTEC MUNICIPAL AIRPORT (N19)
AZTEC AIRPORT RUNWAY 8-26 PAVEMENT REHABILITATION

MARKING PLANS

BHI PROJECT NO.	20210036	DWG NO.	M-2	SHEET	8	OF	9
-----------------	----------	---------	-----	-------	---	----	---

NOTICE OF EXTENDED PAY PROVISIONS
THIS CONTRACT ALLOWS THE OWNER TO MAKE PAYMENT
WITHIN 45 DAYS AFTER SUBMISSION OF AN UNDISPUTED
REQUEST FOR PAYMENT

BENCH MARKS	
BENCH MARK LINE 1	
BENCH MARK LINE 2	
BENCH MARK LINE 3	
BENCH MARK LINE 4	
BENCH MARK LINE 5	
BENCH MARK LINE 6	
BENCH MARK LINE 7	
BENCH MARK LINE 8	
BENCH MARK LINE 9	

ENGINEER'S SEAL

AS-BUILT INFORMATION	
CONTRACTOR	DATE
WORK STAGED BY	DATE
INSPECTORS ACCEPTANCE BY	DATE
FIELD VERIFICATION BY	DATE
DRAWINGS CORRECTED BY	DATE

REVISIONS	
NO.	DATE

DESIGN	
DESIGNED BY	MDH
CHECKED BY	MDH
DRAWN BY	NJS



Thu, 7 May 2020 - 8:35 pm. Plotted by: NSALAZAR
P:\20210036\TRANS\Design\Plan Production\Plans\20210036MP01.dwg

