

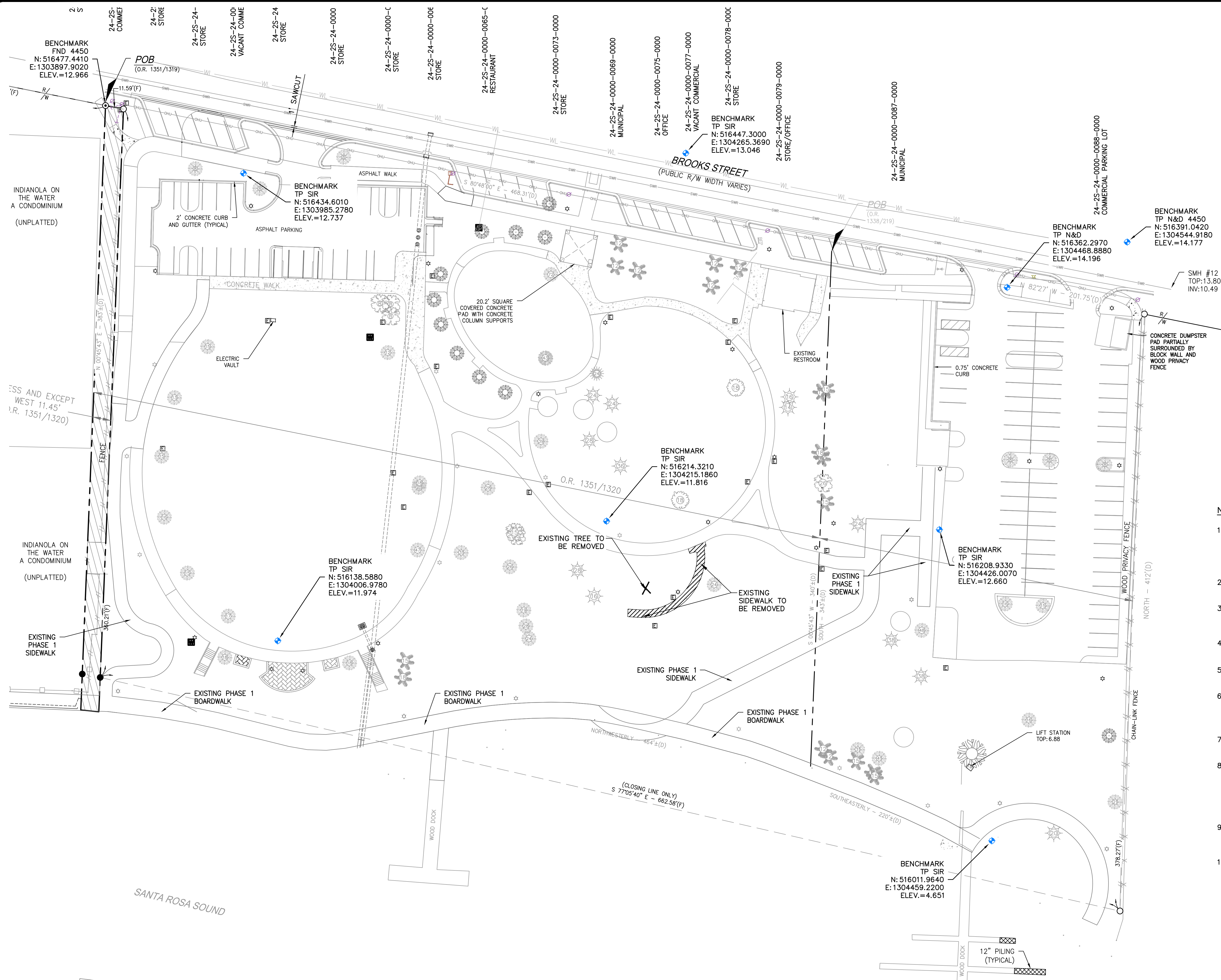






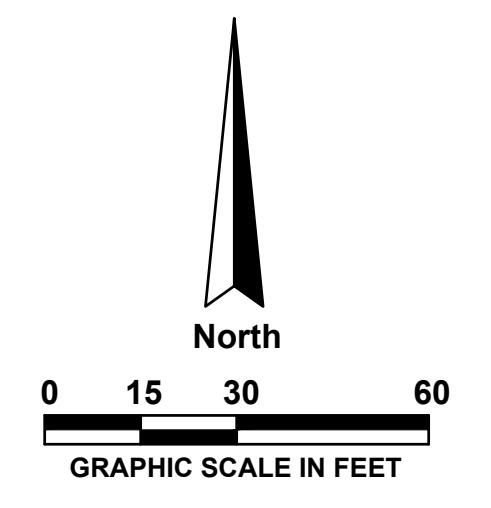


N:\NICEVILLE-PROJECTS\238-CITY OF FWB\2015.0238.03-LANDING DESIGN (CLOSED)\000 CAD - PHASE II - CIVIL-SITE\EXISTING CONDITIONS.DWG 2/7/2024 4:14 PM Bill, Michael



**LEGEND**

- TO BE REMOVED
- EXISTING TREES TO BE REMOVED
- EXISTING LIGHT POLE TO REMAIN



**NOTES:**

- CONTRACTOR SHALL INSTALL SILT FENCE PRIOR TO COMMENCING IN ANY CONSTRUCTION ACTIVITIES AND MAINTAIN SILT FENCE THROUGHOUT CONSTRUCTION AND UNTIL SITE STABILIZED.
- CONTRACTOR SHALL NOTIFY THE ENGINEER IF EROSION CONTROL ISSUES DEVELOP ONSITE.
- CONTRACTOR SHALL BE RESPONSIBLE FOR EROSION CONTROL MEASURES ON SITE 24 HOURS A DAY THROUGHOUT CONSTRUCTION.
- CONTRACTOR SHALL PROVIDE INLET PROTECTION THROUGHOUT CONSTRUCTION.
- SEE GEOMETRY PLANS FOR LOCATION/LAYOUT OF ALL PROPOSED FEATURES.
- SAW-CUT CLEAN EDGES AND MATCH EXISTING GRADE FOR ALL DEMOLITION TIE-IN LOCATIONS. APPLY TACK COAT ON ALL EDGES PER FDOT 300.
- STRIPPINGS INTENDED FOR USE AS TOPSOIL PER FDOT 987.
- SAW CUT MIN 2 FOOT BACK OR PER FLEX BUTT JOINT DETAIL, TYPICAL PAVEMENT SECTION AND DETAILS SHEET(S), WHICHEVER IS GREATER. BUTT JOINT REQUIRES TACK AND CLEAN SAW CUT FOR THE FULL LENGTH OF THE TIE-IN.
- CONTRACTOR TO PROVIDE ADEQUATE BRACED SHORING OR SHEETPIILING PER OSHA REQUIREMENTS DURING CONSTRUCTION.
- SEE SHEET C-7 FOR SILT FENCE AND INLET PROTECTION DETAILS.

**AVCON, INC.**  
 ENGINEERS & PLANNERS  
 320 BAYSHORE DRIVE, SUITE A  
 NICEVILLE, FL 32578-2425  
 OFFICE: (850) 678-0050  
 FAX: (850) 678-0040  
 CORPORATE CERTIFICATE OF AUTHORIZATION NUMBER: 9057  
 www.avconinc.com

**AVCON**

TRANSFORMING TODAY'S IDEAS INTO TOMORROW'S REALITY

NO.	DATE	REVISION	BY

**DEMOLITION PLAN**

RELEASE FOR BID

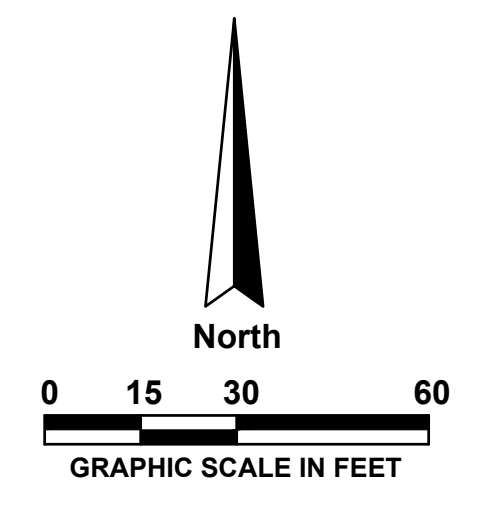
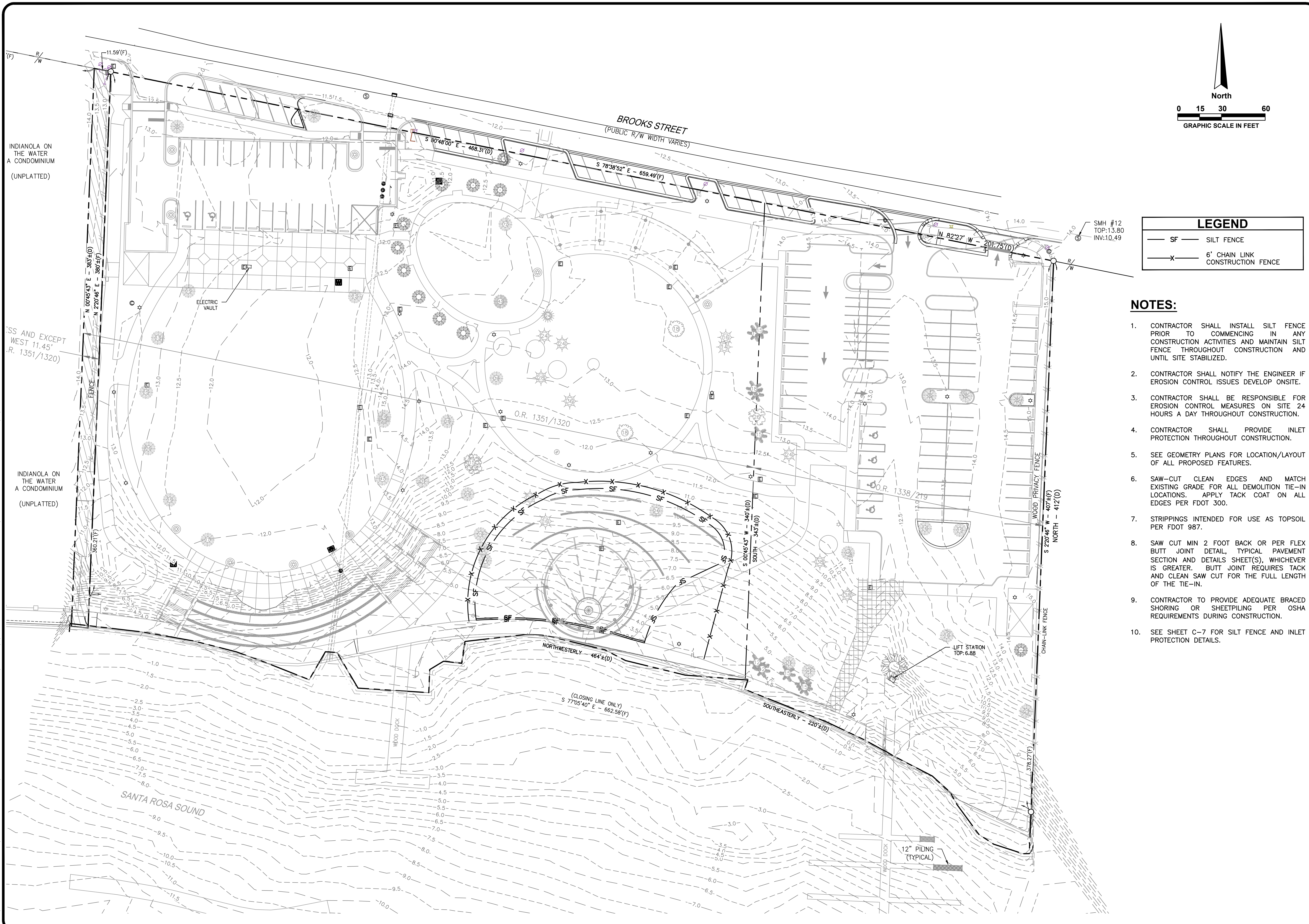
**FORT WALTON LANDING IMPROVEMENTS PHASE II**

PREPARED FOR  
**CITY OF FORT WALTON BEACH**

DESIGNED BY: T.D.N.  
 DRAWN BY: C.A.P.  
 CHECKED BY: V.C.L.  
 APPROVED BY: V.C.L.  
 PROJECT NO: 2015.238.03  
 DATE: FEBRUARY 2024

**SHEET NUMBER**  
**G-5**

N:\NICEVILLE-PROJECTS\238-CITY OF FWB\2015.0238.03- LANDING DESIGN (CLOSED)\000 CAD - PHASE II - CIVIL-SITE\EROSION CONTROL PLAN.DWG 2/7/2024 4:14 PM Bill, Michael



LEGEND	
— SF —	SILT FENCE
— X —	6' CHAIN LINK CONSTRUCTION FENCE

- NOTES:**
- CONTRACTOR SHALL INSTALL SILT FENCE PRIOR TO COMMENCING IN ANY CONSTRUCTION ACTIVITIES AND MAINTAIN SILT FENCE THROUGHOUT CONSTRUCTION AND UNTIL SITE STABILIZED.
  - CONTRACTOR SHALL NOTIFY THE ENGINEER IF EROSION CONTROL ISSUES DEVELOP ONSITE.
  - CONTRACTOR SHALL BE RESPONSIBLE FOR EROSION CONTROL MEASURES ON SITE 24 HOURS A DAY THROUGHOUT CONSTRUCTION.
  - CONTRACTOR SHALL PROVIDE INLET PROTECTION THROUGHOUT CONSTRUCTION.
  - SEE GEOMETRY PLANS FOR LOCATION/LAYOUT OF ALL PROPOSED FEATURES.
  - SAW-CUT CLEAN EDGES AND MATCH EXISTING GRADE FOR ALL DEMOLITION TIE-IN LOCATIONS. APPLY TACK COAT ON ALL EDGES PER FOOT 300.
  - STRIPPINGS INTENDED FOR USE AS TOPSOIL PER FDOT 987.
  - SAW CUT MIN 2 FOOT BACK OR PER FLEX BUTT JOINT DETAIL, TYPICAL PAVEMENT SECTION AND DETAILS SHEET(S), WHICHEVER IS GREATER. BUTT JOINT REQUIRES TACK AND CLEAN SAW CUT FOR THE FULL LENGTH OF THE TIE-IN.
  - CONTRACTOR TO PROVIDE ADEQUATE BRACED SHORING OR SHEETPIILING PER OSHA REQUIREMENTS DURING CONSTRUCTION.
  - SEE SHEET C-7 FOR SILT FENCE AND INLET PROTECTION DETAILS.

**AVCON, INC.**  
 ENGINEERS & PLANNERS  
 320 BAYSHORE DRIVE, SUITE A  
 NICEVILLE, FL 32578-2425  
 OFFICE: (850) 678-0050  
 FAX: (850) 678-0040  
 CORPORATE CERTIFICATE OF AUTHORIZATION NUMBER: 9057  
 www.avconinc.com

**AVCON**

TRANSFORMING TODAY'S IDEAS INTO TOMORROW'S REALITY

TONIA D. NATION, P.E.  
 FL LICENSE NO.: 64631  
 FBPR CERTIFICATE OF AUTHORIZATION NO. 5057

NO.	DATE	REVISION	BY

**EROSION CONTROL PLAN**

RELEASE FOR BID

**FORT WALTON LANDING IMPROVEMENTS PHASE II**

PREPARED FOR  
**CITY OF FORT WALTON BEACH**

DESIGNED BY: T.D.N.  
 DRAWN BY: C.A.P.  
 CHECKED BY: V.C.L.  
 APPROVED BY: V.C.L.  
 PROJECT NO: 2015.238.03  
 DATE: FEBRUARY 2024

**SHEET NUMBER**  
**G-6**



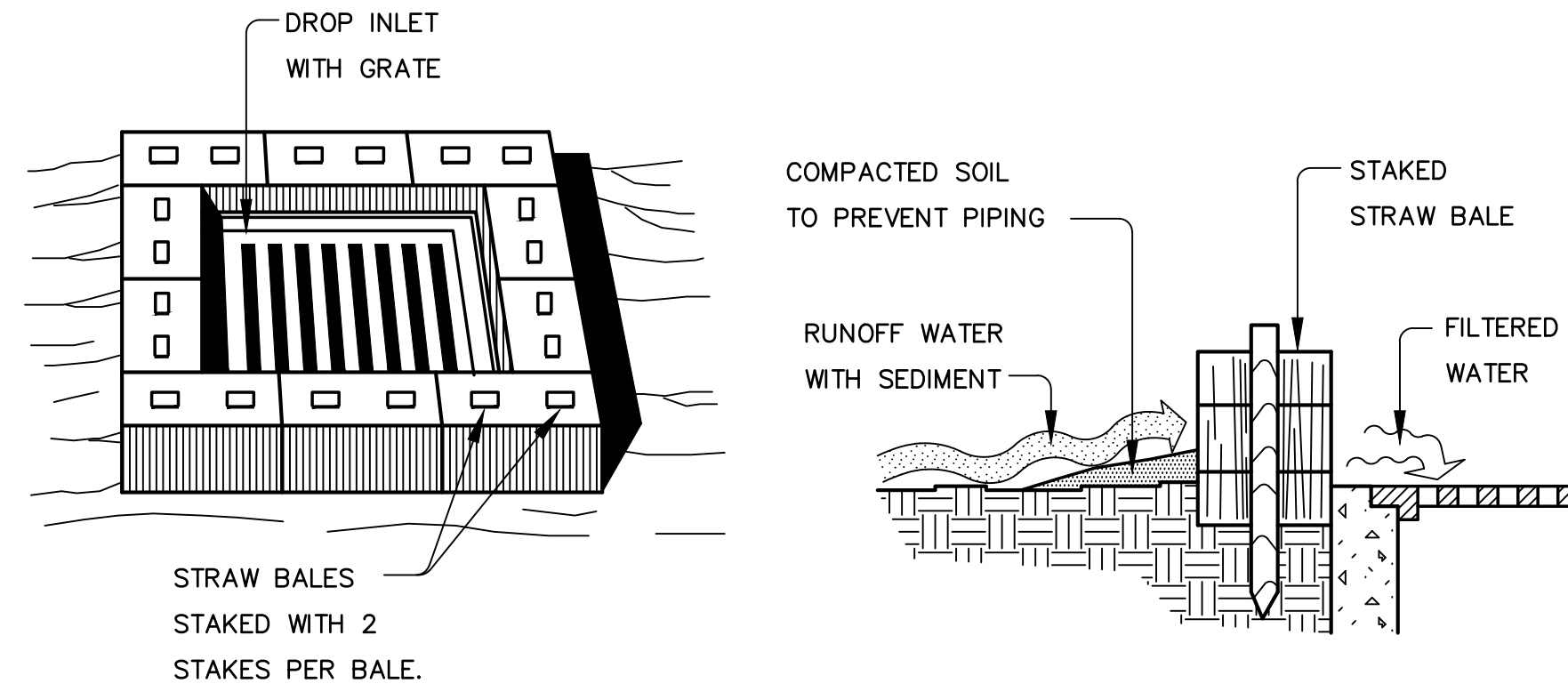










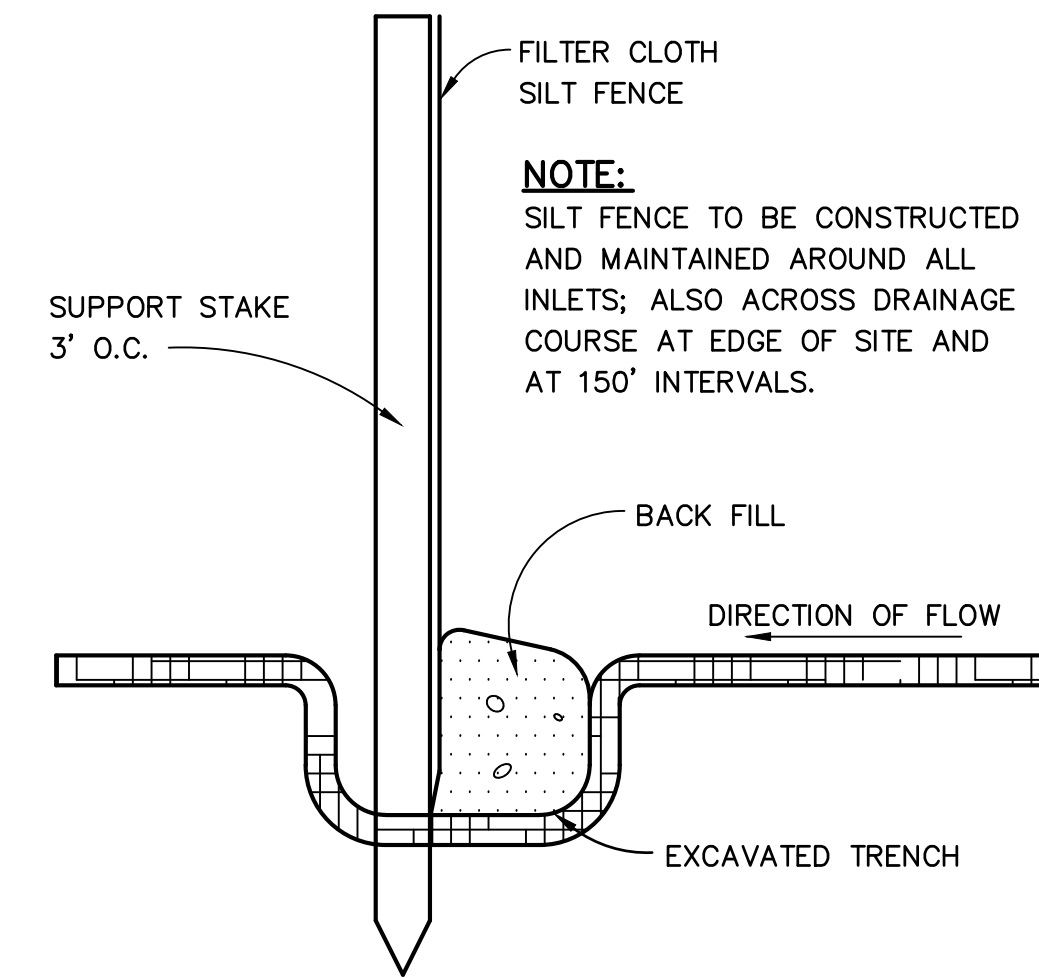


**STRAW BALE DROP INLET SEDIMENT FILTER**

N.T.S.

**SPECIFIC APPLICATION**

THIS METHOD OF INLET PROTECTION IS APPLICABLE WHERE THE INLET DRAINS A RELATIVELY FLAT AREA (SLOPES NO GREATER THAN 5 PERCENT) WHERE SHEET OR OVERLAND FLOWS (NOT EXCEEDING 0.5 CFS) ARE TYPICAL. THE METHOD SHALL NOT APPLY TO INLETS RECEIVING CONCENTRATED FLOWS, SUCH AS IN STREET OR HIGHWAY MEDIANS.



**SILT FENCE DETAIL**

N.T.S.

**EROSION NOTES:**

1. EROSION PROTECTION: SOIL EROSION SEDIMENTATION MUST BE CONTROLLED AND RETAINED ON SITE DURING CONSTRUCTION. THEREFORE, EROSION PROTECTION, SUCH AS STAKED BALED HAY AND SILT FENCE BARRIERS, MUST BE INSTALLED PRIOR TO START OF CONSTRUCTION.
2. SILT FENCE BARRIER SHALL BE INSTALLED AS SHOWN ON PLANS, AND IN ALL AREAS SUBJECT TO SOIL EROSION SEDIMENTATION.
3. STORMWATER DETENTION AREAS SHALL BE SODDED.
4. GRADES AT CURBS ARE AT FLOWLINE.

N:\NICEVILLE-PROJECTS\238-CITY OF FWB\2015.0238.03- LANDING DESIGN (CLOSED)\000 CAD - PHASE II - CIVIL-SITE\TYPICAL\_PAVEMENT DETAILS.DWG 2/7/2024 4:15 PM Bill, Michael

**AVCON, INC.**  
ENGINEERS & PLANNERS  
320 BAYSHORE DRIVE, SUITE A  
NICEVILLE, FL 32578-2425  
OFFICE: (850) 678-0050  
FAX: (850) 678-0040  
CORPORATE CERTIFICATE OF  
AUTHORIZATION NUMBER: 5057  
WWW.AVCONINC.COM



TONIA D. NATION, P.E.  
FL LICENSE NO.: 64631  
FBPR CERTIFICATE OF  
AUTHORIZATION NO. 5057

NO.	DATE	REVISION	BY

**EROSION CONTROL  
DETAILS & NOTES**

RELEASE FOR BID

**FORT WALTON LANDING  
IMPROVEMENTS  
PHASE II**  
PREPARED FOR  
**CITY OF FORT WALTON  
BEACH**

DESIGNED BY: T.D.N.  
DRAWN BY: C.A.P.  
CHECKED BY: V.C.L.  
APPROVED BY: V.C.L.  
PROJECT NO: 2015.238.03  
DATE: FEBRUARY 2024

**SHEET NUMBER**  
**C-7**



