



### DESCRIPTION (AS FURNISHED):

**O.R. 1351/1319**  
 COMMENCING AT THE NW CORNER OF SECTION 24, TOWNSHIP 2 SOUTH, RANGE 24 WEST, OKALOOSA COUNTY, FLORIDA, GO THENCE EAST A DISTANCE OF 1848.55 FEET, THENCE SOUTH A DISTANCE OF 722.46 FEET TO A FOUND CONCRETE MONUMENT LYING ON THE SOUTHERLY RIGHT-OF-WAY (R/W) OF BROOKS STREET (40' R/W) SAID MONUMENT BEING THE POINT OF BEGINNING; GO THENCE S 80°48'00" E, (REFERENCE BEARING) ALONG THE SOUTHERLY R/W OF BROOKS STREET, A DISTANCE OF 468.31 FEET TO A FOUND CONCRETE MONUMENT; THENCE DEPARTING THE AFOREMENTIONED R/W, GO S00°45'43"W, A DISTANCE OF 340 FEET MORE OR LESS TO THE MEAN HIGH WATER LINE (MHWL) OF SANTA ROSA SOUND, THENCE MEANDER NORTHWESTERLY ALONG SAID MHWL, A DISTANCE OF 464 FEET MORE OR LESS TO A POINT LYING S00°45'43" W, 383 FEET MORE OR LESS FROM THE POINT OF BEGINNING; THENCE DEPARTING THE MHWL OF SANTA ROSA SOUND, GO THENCE N 00°45'43" E, A DISTANCE OF 383 FEET MORE OR LESS TO THE POINT OF BEGINNING.  
 LYING IN AND BEING PART OF SECTION 24, TOWNSHIP 2 SOUTH, RANGE 24 WEST, OKALOOSA COUNTY, FLORIDA, TOGETHER WITH ALL RIPARIAN AND LITTORAL RIGHTS APPERTAINING THERETO.

LESS AND EXCEPT THE WEST 1145 FEET OF THE ABOVE-DESCRIBED TRACT OF LAND.  
 SUBJECT TO EASEMENTS TO STATE ROAD DEPARTMENT OF FLORIDA FOR MAINTENANCE OF A STORM SEWER AS RECITED IN O. R. BOOK 364, PAGE 224, OF THE PUBLIC RECORDS IN AND FOR OKALOOSA COUNTY, FLORIDA, AND SUBJECT TO THAT EASEMENT TO GULF POWER COMPANY, RECORDED IN O. R. BOOK 1087, AT PAGE 1144, OF THE PUBLIC RECORDS IN AND FOR OKALOOSA COUNTY, FLORIDA. SUBJECT TO EASEMENT TO STATE OF FLORIDA RECORDED IN DEED BOOK 44, PAGE 191; AND SUBJECT TO EASEMENT TO CITY OF FORT WALTON BEACH RECORDED IN O. R. BOOK 8111, PAGE 815, ALL OF THE PUBLIC RECORDS IN AND FOR OKALOOSA COUNTY, FLORIDA.

**O.R. 1338/219**  
 BEGIN AT A POINT ON THE SOUTH SIDE OF BROOKS STREET 2323.0 EAST OF THE NW CORNER SECTION 24, TWP 2 S, R 24 W, FORT WALTON BEACH, OKALOOSA COUNTY, FLORIDA; PROCEED SOUTH 343 FEET MORE OR LESS TO THE SHORE OF SANTA ROSA SOUND; THENCE IN A SOUTHEASTERLY DIRECTION 220 FT. MORE OR LESS TO A POINT 2523 FEET EAST OF SAID N.W. CORNER SEC. 24; THENCE NORTH 412 FEET TO THE SOUTH LINE OF BROOKE STREET; THENCE N 82° 27' W 201.75 FEET TO THE POINT OF BEGINNING.

### LEGEND:

- # = NUMBER
- - - = DISTANCE NOT TO SCALE
- L.B. = LICENSED BUSINESS
- L.S. = LICENSED SURVEYOR
- P.S.M. = PROFESSIONAL SURVEYOR AND MAPPER
- O.R. = OFFICIAL RECORDS
- ± = MORE OR LESS
- R/W = RIGHT OF WAY
- C = CENTERLINE
- R = RADIUS
- A = ARC LENGTH
- D = DELTA ANGLE
- CB = CHORD BEARING
- C = CHORD
- ☎ = TELEPHONE SERVICE BOX
- ⊕ = SANITARY SEWER MANHOLE
- ⊕ = STORM DRAINAGE MANHOLE
- ⊕ = WATER VALVE
- ☎ = TELEVISION SERVICE BOX
- ⊕ = WATER METER
- ⊕ = POWER POLE
- ⊕ = LIGHT POLE
- A/C = AIR CONDITIONER
- ⊕ = POWER POLE AND GUY ANCHOR
- ⊕ = ROAD SIGN
- ⊕ = REINFORCED CONCRETE PIPE
- ⊕ = CORRUGATED METAL PIPE
- ⊕ = CORRUGATED PLASTIC PIPE
- ⊕ = FOUND 4"x4" CONCRETE MONUMENT, NO IDENTIFICATION
- ⊕ = SET 1/2" CAPPED IRON ROD, L.B. #3501
- ⊕ = FOUND 1/2" CAPPED IRON ROD, L.B. #3501
- ⊕ = FOUND 1/2" CAPPED IRON ROD, NO IDENTIFICATION
- O.R. = OFFICIAL RECORDS
- = TELEPHONE CABLE
- = FIBER-OPTIC CABLE
- = ELECTRIC CABLE
- = GAS MAIN
- = OVERHEAD UTILITIES
- = WATER LINE
- = FORCE MAIN
- = WETLANDS
- ☆ = LAMP POST
- F.M. = FORCE MAIN
- ⊕ = TRAFFIC CONTROL BOX
- ⊕ = FIBER-OPTIC MARKER
- CONC. = CONCRETE
- POS. = PAGES
- E.P.A. = ENVIRONMENTAL PROTECTION AREA
- FDOT = FLORIDA DEPARTMENT OF TRANSPORTATION
- AC. = ACRES
- (CE) = CONSERVATION EASEMENT DATA
- LS = LIFT STATION
- PL = PROPERTY LINE

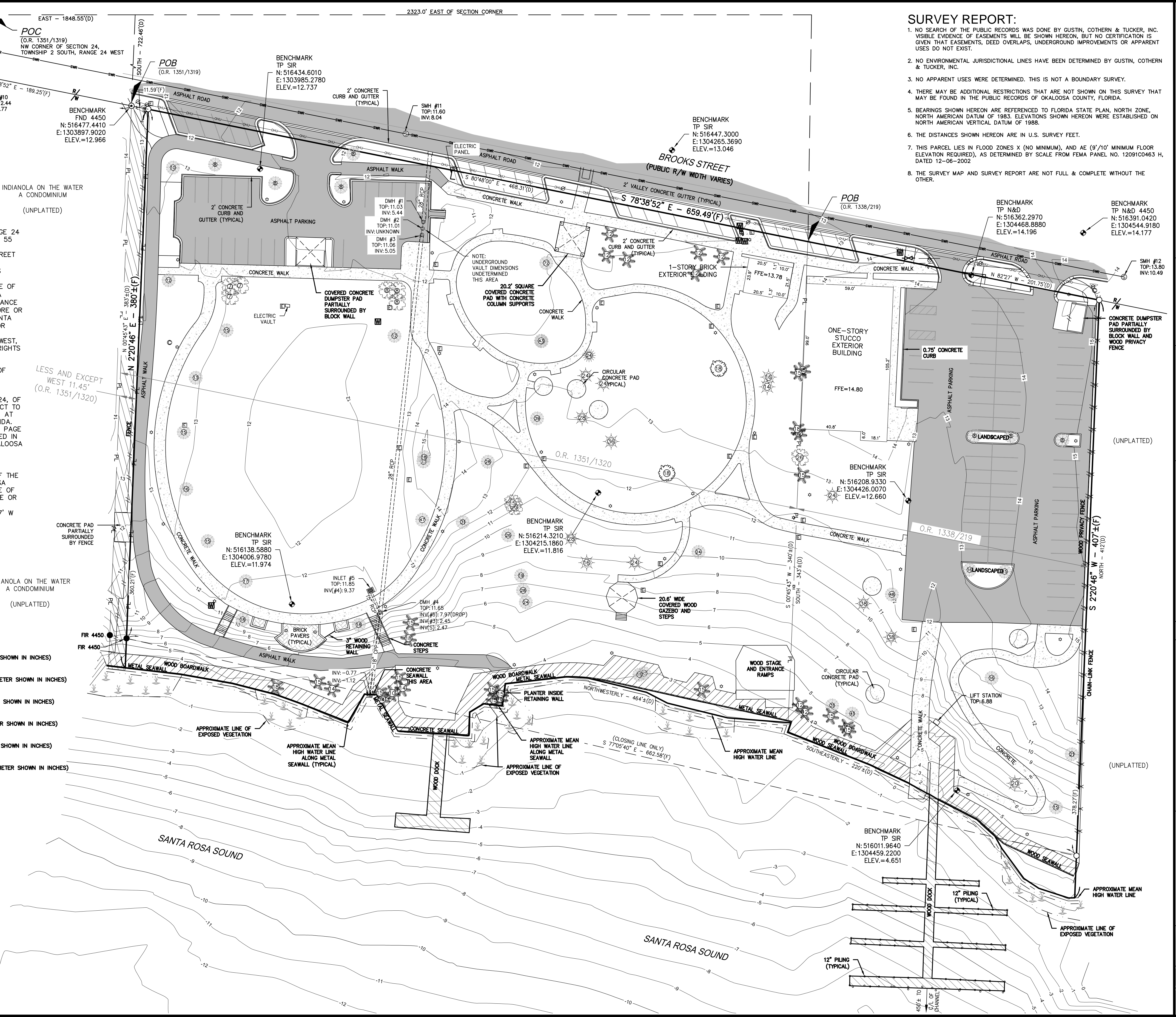
- ⊕ = OAK TREE (DIAMETER SHOWN IN INCHES)
- ⊕ = MAGNOLIA TREE (DIAMETER SHOWN IN INCHES)
- ⊕ = PALM TREE (DIAMETER SHOWN IN INCHES)
- ⊕ = CEDAR TREE (DIAMETER SHOWN IN INCHES)
- ⊕ = PINE TREE (DIAMETER SHOWN IN INCHES)
- ⊕ = SYCAMORE TREE (DIAMETER SHOWN IN INCHES)

INDIANOLA ON THE WATER A CONDOMINIUM (UNPLATTED)

INDIANOLA ON THE WATER A CONDOMINIUM (UNPLATTED)

SANTA ROSA SOUND

SANTA ROSA SOUND



### SURVEY REPORT:

- NO SEARCH OF THE PUBLIC RECORDS WAS DONE BY JUSTIN, COTHERN & TUCKER, INC. VISIBLE EVIDENCE OF EASEMENTS WILL BE SHOWN HEREON, BUT NO CERTIFICATION IS GIVEN THAT EASEMENTS, DEED OVERLAPS, UNDERGROUND IMPROVEMENTS OR APPARENT USES DO NOT EXIST.
- NO ENVIRONMENTAL JURISDICTIONAL LINES HAVE BEEN DETERMINED BY JUSTIN, COTHERN & TUCKER, INC.
- NO APPARENT USES WERE DETERMINED. THIS IS NOT A BOUNDARY SURVEY.
- THERE MAY BE ADDITIONAL RESTRICTIONS THAT ARE NOT SHOWN ON THIS SURVEY THAT MAY BE FOUND IN THE PUBLIC RECORDS OF OKALOOSA COUNTY, FLORIDA.
- BEARINGS SHOWN HEREON ARE REFERENCED TO FLORIDA STATE PLAN, NORTH ZONE, NORTH AMERICAN DATUM OF 1983. ELEVATIONS SHOWN HEREON WERE ESTABLISHED ON NORTH AMERICAN VERTICAL DATUM OF 1988.
- THE DISTANCES SHOWN HEREON ARE IN U.S. SURVEY FEET.
- THIS PARCEL LIES IN FLOOD ZONES X (NO MINIMUM), AND AE (9'10" MINIMUM FLOOR ELEVATION REQUIRED), AS DETERMINED BY SCALE FROM FEMA PANEL NO. 12091C0463 H, DATED 12-06-2002.
- THE SURVEY MAP AND SURVEY REPORT ARE NOT FULL & COMPLETE WITHOUT THE OTHER.

**Gustin, Cothern & Tucker, Inc.**  
 Civil Engineering/Land Surveying  
 Niceville, FL 32578  
 (850) 678-5141  
 Fax: (850) 729-2460  
 L.B. No. 3501  
 www.gctengineering.com

NOT VALID WITHOUT THE SIGNATURE AND THE ORIGINAL RAISED SEAL OF A FLORIDA LICENSED SURVEYOR AND MAPPER  
 ALLEN E. TUCKER, P.S.M. No. 4584  
 HORACE WAYNE WALKER, JR., P.S.M. No. 6029  
 JOSHUA P. WOOD, P.S.M. No. 6980  
 DATE: 18 DEC 2015  
 © G.C.T., INC. 2015

REV 12/18/2015: REVISED PER ENGINEERING COMMENTS  
 REV 12/18/2015: REVISED PER ENGINEERING COMMENTS  
 REV 12/18/2015: REVISED PER ENGINEERING COMMENTS  
 REV 12/18/2015: REVISED PER ENGINEERING COMMENTS

**FT WALTON BEACH LANDING**  
 IN SECTION 24, TOWNSHIP 2 SOUTH, RANGE 24 WEST, OKALOOSA COUNTY, FLORIDA

CUSTOMER: ANCON  
 SURVEY TYPE: TOPOGRAPHIC  
 SURVEY DATE: 12/18/2015  
 F.B. NO.: 15-09  
 DATUM: NAVD 83  
 SHEET 1 OF 1  
**S15077**  
 INDEX 15077a