

GENERAL CONSTRUCTION NOTES

- A. PROVIDE FILLER PANELS AS REQUIRED AT CASEWORK & MILLWORK INSTALLATION LOCATIONS. TYP. SPECIFICALLY AT LOCATIONS WHERE CASEWORK IS ADJACENT TO WALL. PROVIDE FILLER PANELS FOR EASE OF OPENING & CLOSING CASEWORK DOORS & DRAWERS.
- B. ALL END PANELS SHALL BE FINISHED TO MATCH ADJACENT CABINETRY / CASEWORK.
- C. PORCELAIN WALL TILE SHALL ALWAYS BEGIN WITH THE FULL TILE AT THE TOP OF THE ELEVATION. ADJACENT TO THE CEILING. THE CUT TILE SHALL ALWAYS BE AT THE BASE, ADJACENT TO THE FLOOR SURFACE, UNO.
- D. PROVIDE REGULAR CMU BEHIND FLUSH MOUNT FIXTURES AND DEVICES AT LOCATIONS WHERE SPLIT FACE CMU IS CALLED OUT.
- E. WALLS SHALL BE PAINTED PNT-1, UNO.
- F. WALL BASE SHALL BE RWB-1, UNO.
- G. COVE TILE BASE @ LOCKER ROOM(S) TO EXTEND AT LOCKER BASE, TYP.
- H. PROVIDE FILLER PANELS AS REQUIRED @ END(S) OF LOCKER RUN, TYP.

CONSTRUCTION KEYNOTES

- 1 TYPICAL CASEWORK:
 - FACE AND SIDE FINISH OF BASE AND UPPER CABINETRY: PLAM-1
 - INTERIOR FINISH: WHITE MELAMINE
 - IF OPEN SHELF, INTERIOR FINISH SHALL BE PLAM-1
 - COUNTERTOP & 4" SPLASH: PLAM-2
 - HARDWARE PULLS: ADA COMPLIANT, 4" BAR PULL, BRUSHED NICKEL FINISH
- 2 TYPICAL CASEWORK W/ SINK @ BASE CABINET:
 - FACE AND SIDE FINISH OF BASE AND UPPER CABINETRY: PLAM-1
 - INTERIOR FINISH: WHITE MELAMINE
 - COUNTERTOP & 4" SPLASH: SSM-1
 - HARDWARE PULLS: ADA COMPLIANT, 4" BAR PULL, BRUSHED NICKEL FINISH
- 3 CASEWORK @ MEDIA CENTER MAKER'S SPACE:
 - FACE AND SIDE FINISH OF BASE AND UPPER CABINETRY: PLAM-7
 - INTERIOR FINISH: WHITE MELAMINE
 - COUNTERTOP & 4" SPLASH: SSM-5
 - HARDWARE PULLS: ADA COMPLIANT, 4" BAR PULL, BRUSHED NICKEL FINISH
- 4 CASEWORK @ MEDIA CENTER KIOSK:
 - FACE AND SIDE FINISH OF BASE CABINETRY: PLAM-7
 - INTERIOR FINISH: WHITE MELAMINE
 - COUNTERTOP & 4" SPLASH: SSM-3
 - HARDWARE PULLS: ADA COMPLIANT, 4" BAR PULL, BRUSHED NICKEL FINISH
- 5 CASEWORK @ SCIENCE ROOMS:
 - FACE AND SIDE FINISH OF BASE CABINETRY: PLAM-7
 - FACE AND SIDE FINISH OF UPPER CABINETRY: PLAM-6
 - INTERIOR FINISH: WHITE MELAMINE
 - COUNTERTOP & 4" SPLASH: SSM-4
 - HARDWARE PULLS: ADA COMPLIANT, 4" BAR PULL, BRUSHED NICKEL FINISH
- 6 CLASSROOM STORAGE TOWER CASEWORK:
 - FACE AND SIDE FINISH: PLAM-8
 - INTERIOR FINISH: WHITE MELAMINE
 - HARDWARE PULLS: ADA COMPLIANT, 8" BAR PULL, BRUSHED NICKEL FINISH
- 7 Z-CLIP MOUNTED GYM WALL PADDING - REFER TO ARCH. SPEC. FOR FULL DETAILS.
- 8 Z-CLIP MOUNTED FULL LENGTH FITNESS MIRRORS - TEMPERED GLASS W/ STAINLESS STEEL U-CHANNEL EDGE @ TOP & BOTTOM (TYP.)
- 9 MILLWORK TEACHING WALL - ALL EXPOSED FACES SHALL BE COVERED WITH VNR-1.
- 10 ACCENT COLOR @ PAINTED GYP. BULKHEAD IN EXTENDED LEARNING AREA, AS WELL AS ABOVE LOCKERS IN THE CORRIDOR. VARIES PER FLOOR:
 - PNT - 4 @ LEVEL 1
 - PNT - 5 @ LEVEL 2
 - PNT - 6 @ LEVEL 3
- 11 CORRIDOR WINDOW MILLWORK SURROUND: ALL PANELS SHALL BE FINISHED IN WOOD VENEER: VNR-1 (REFER TO MATERIAL SCHEDULE & ASSOCIATED ARCHITECTURAL SPECIFICATION). 3 ACCENT PANELS SHALL BE INSTALLED PER LEVEL AS INDICATED.
 - GREEN (PNT-4) LAQUERED PANEL @ L1
 - BLUE (PNT-5) LAQUERED PANEL @ L2
 - YELLOW (PNT-6) LAQUERED PANEL @ L3
- 12 1/4" LAMINATED GLASS (BUTT GLAZED) IN HM FRAME (PNT-19), TYP. @ EXTENDED LEARNING.
- 13 1" INSULATED GLAZING IN AL. STOREFRONT SYSTEM

Final Plans for Bidding and Construction

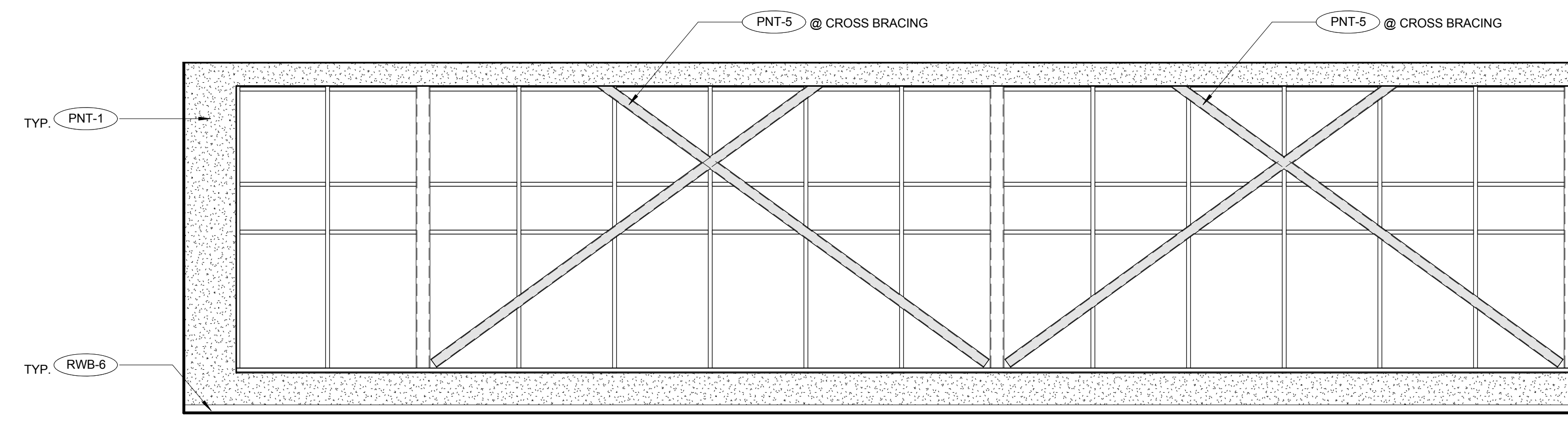
PORTAGE PUBLIC SCHOOLS

Portage Public Schools
THE FUTURE LEARNS HERE

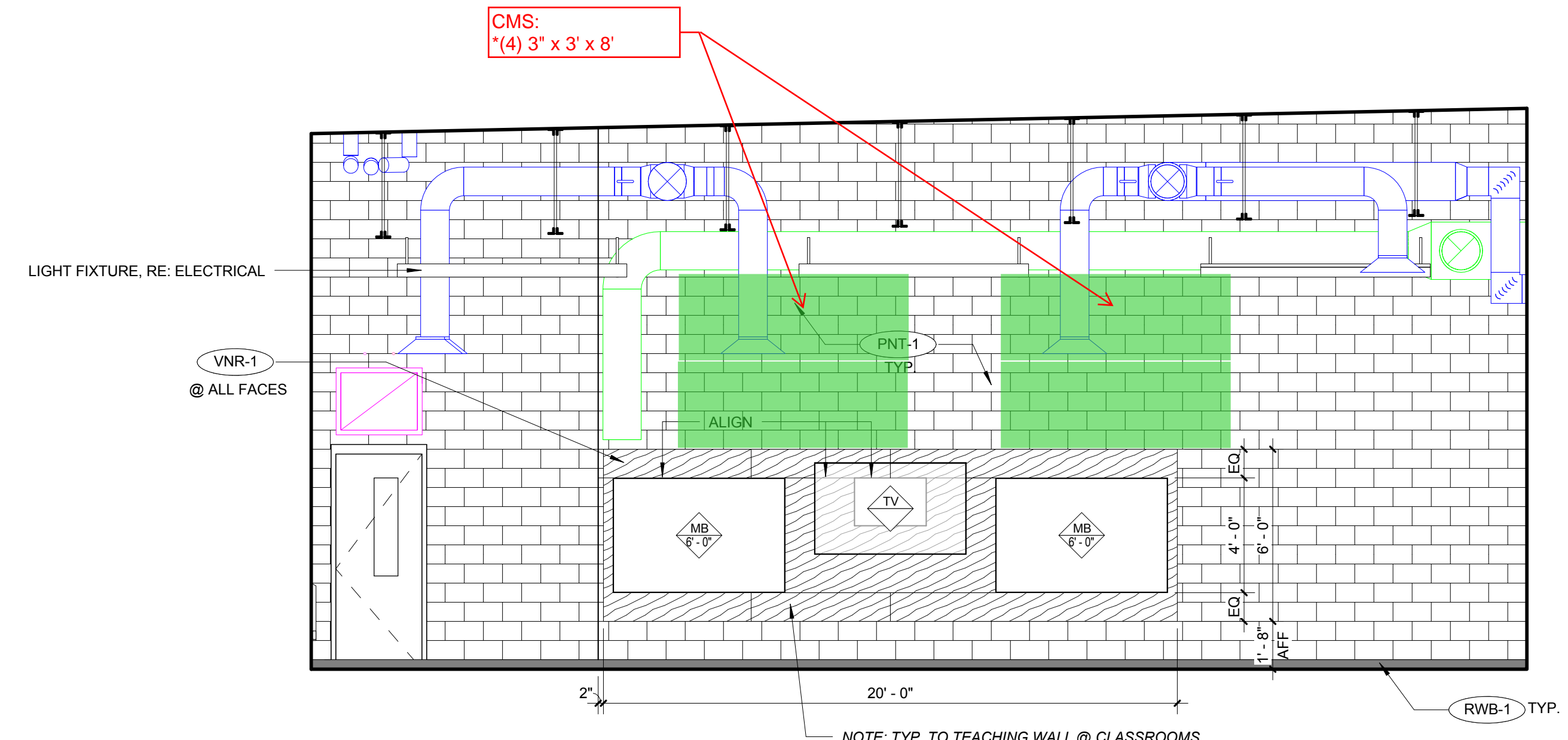
CENTRAL MIDDLE SCHOOL
PORTAGE, MICHIGAN

DRAWN: Author
CHECKED: Checker
SCALE: As Indicated
UNLESS NOTED OTHERWISE

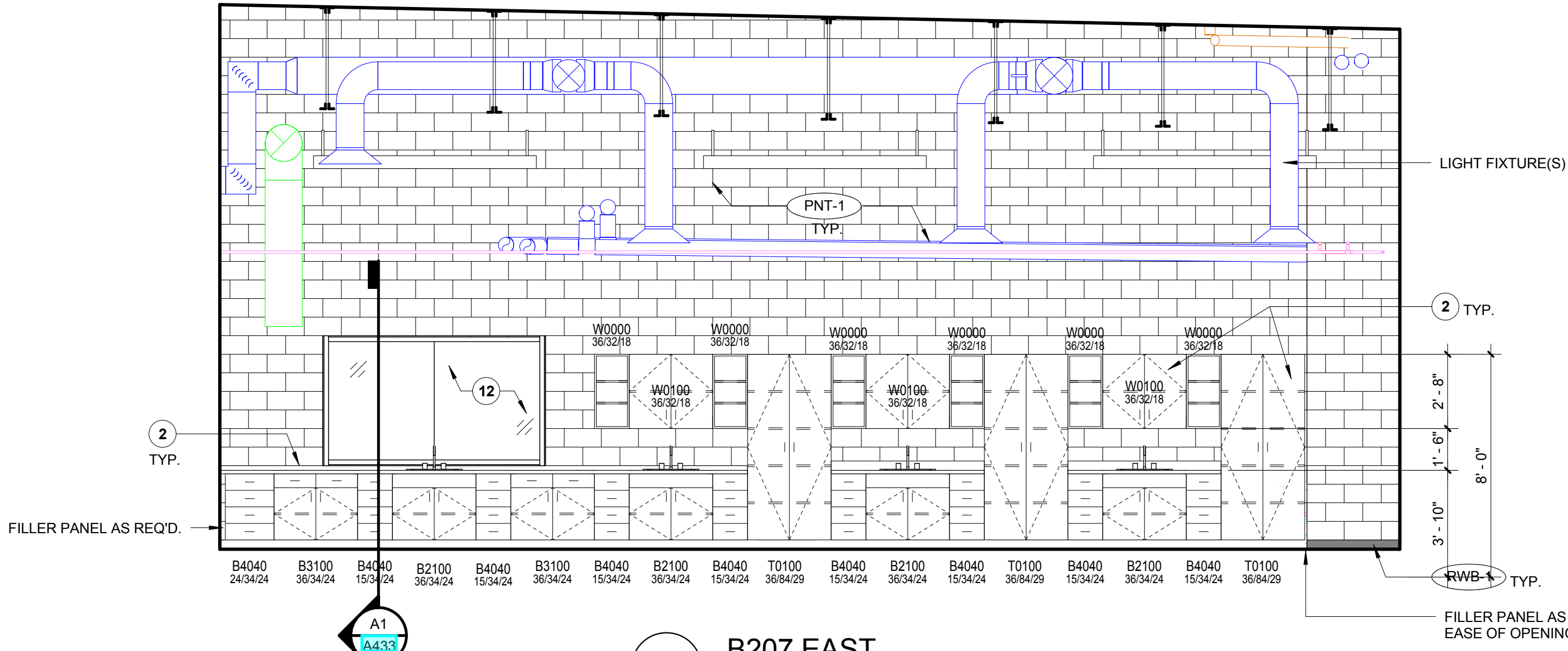
ISSUE:
2018.01.19 CONSTRUCTION



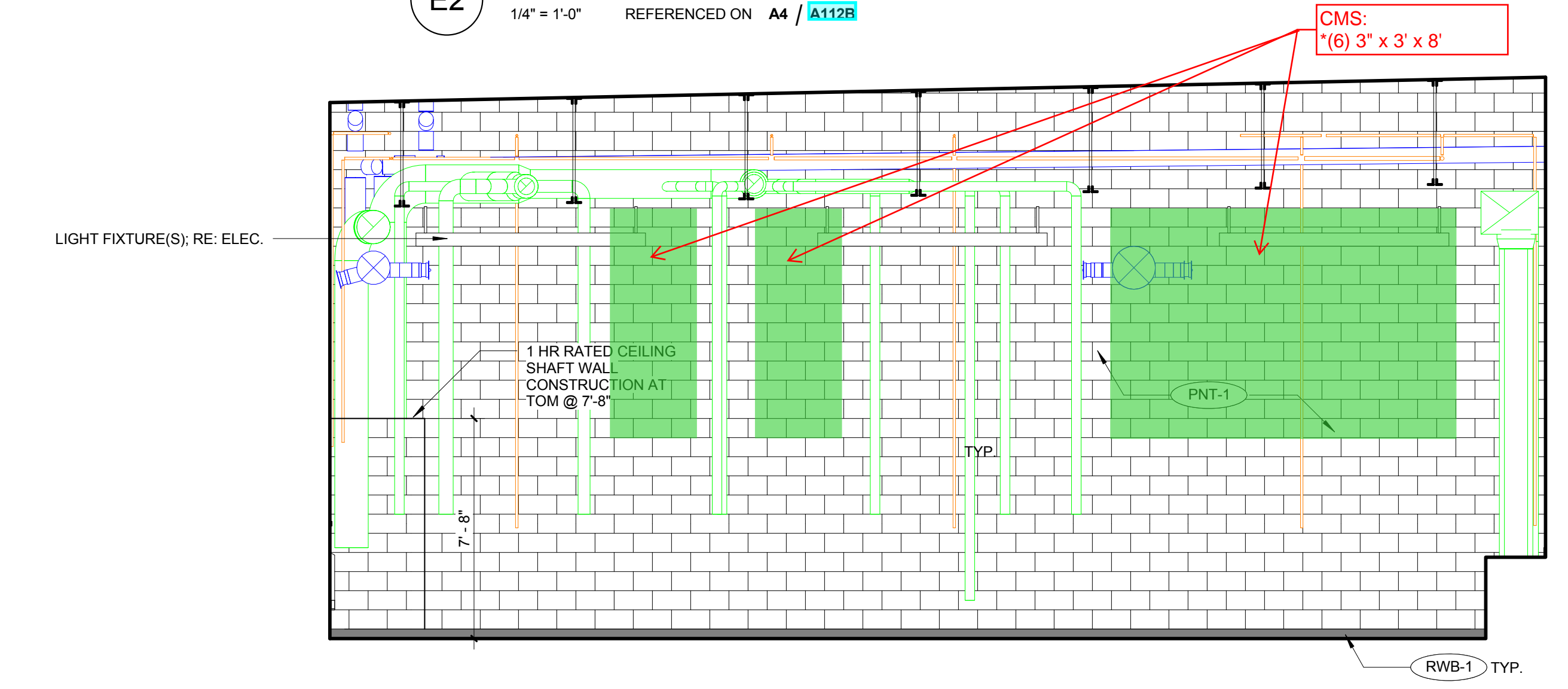
A4 A206 NORTH
1/4" = 1'-0" REFERENCED ON A4 / A112A



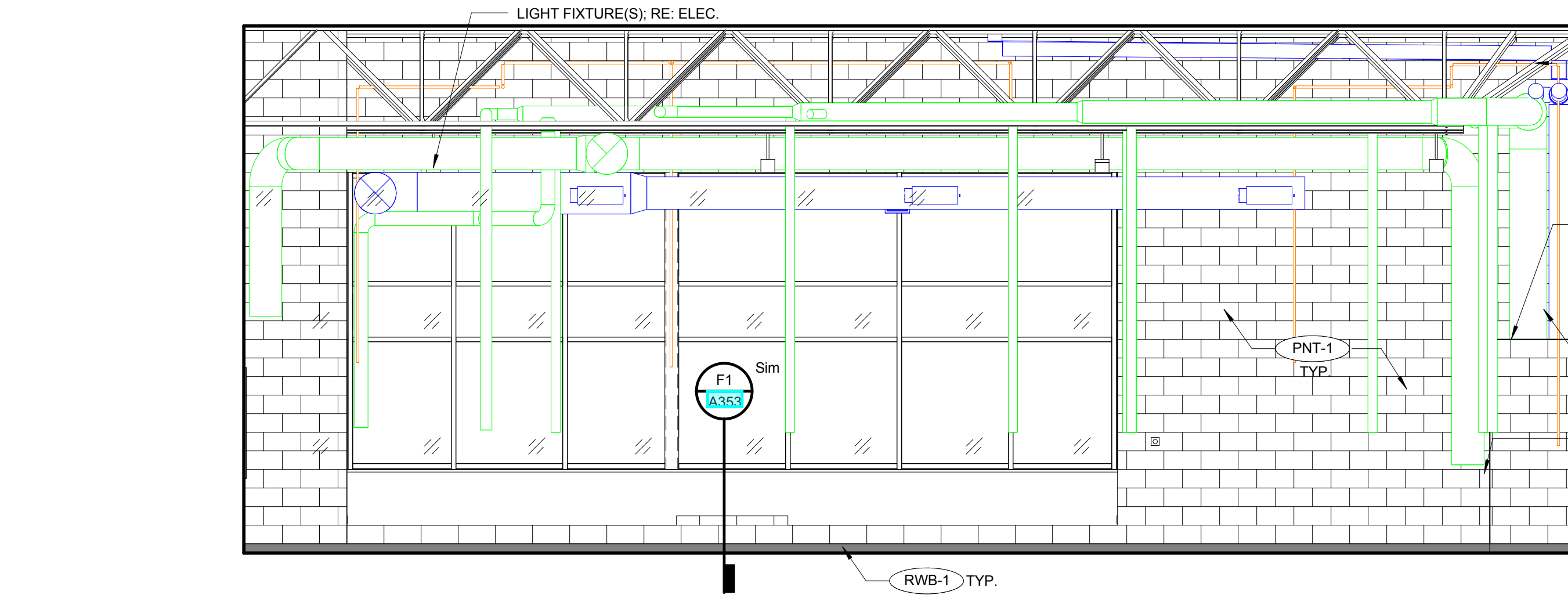
E2 B207 WEST
1/4" = 1'-0" REFERENCED ON A4 / A112B



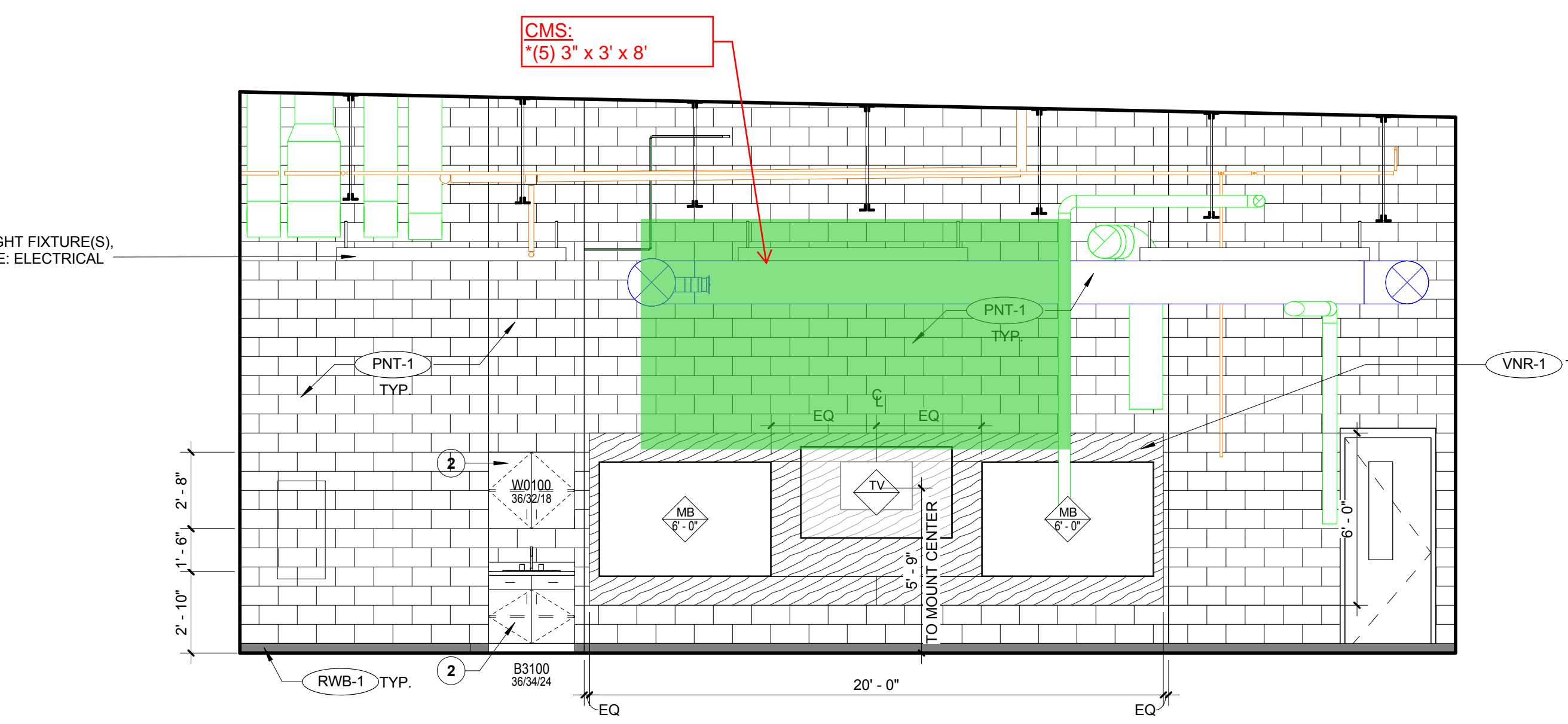
E6 B207 EAST
1/4" = 1'-0" REFERENCED ON A4 / A112B



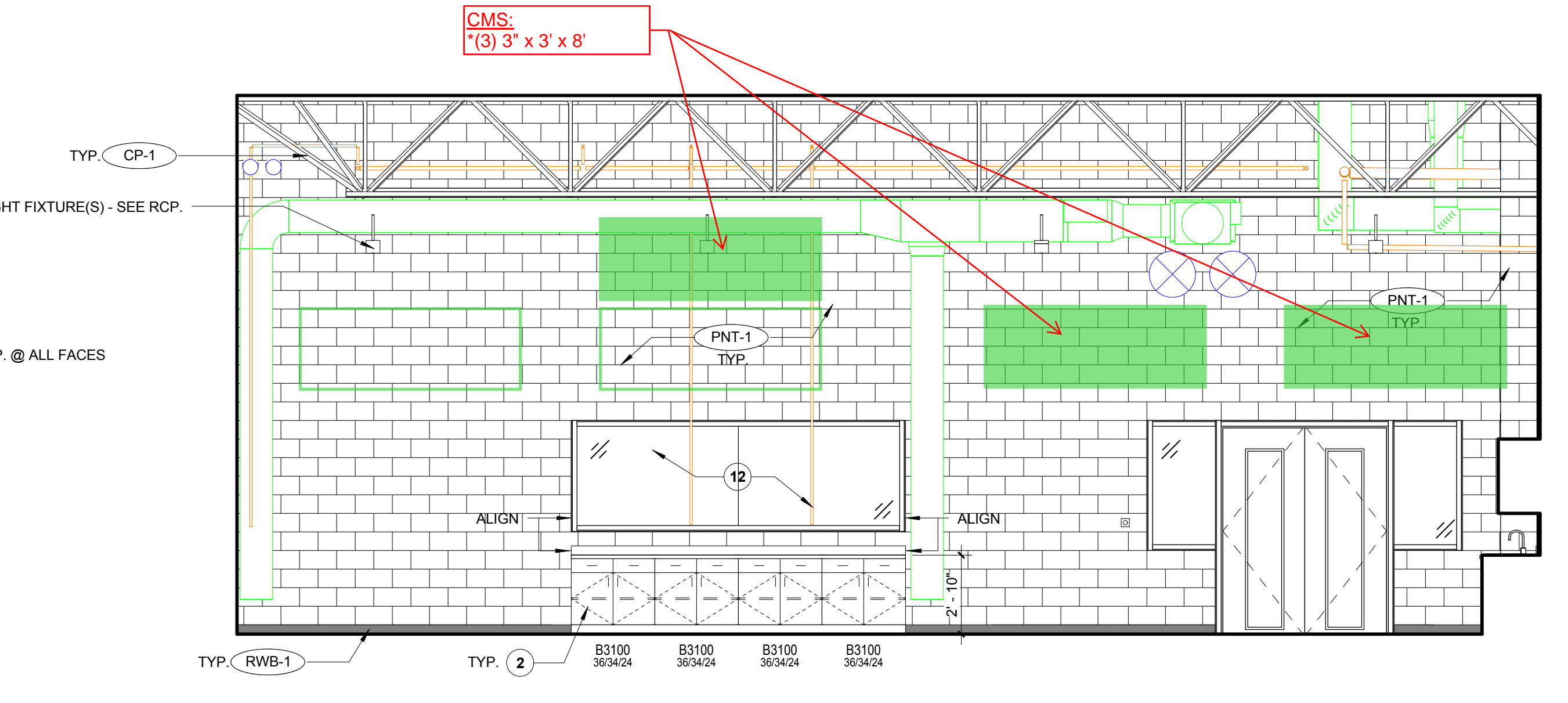
C2 B206 WEST
1/4" = 1'-0" REFERENCED ON A4 / A112B



C6 B206 SOUTH
1/4" = 1'-0" REFERENCED ON A4 / A112B

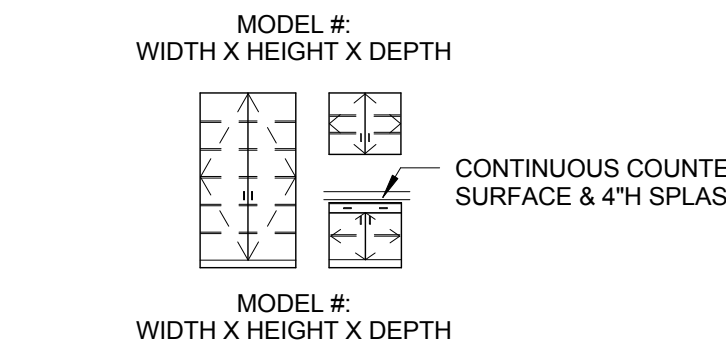


A2 B206 EAST
1/4" = 1'-0" REFERENCED ON A4 / A112B



A6 B206 NORTH
1/4" = 1'-0" REFERENCED ON A4 / A112B

CASEWORK LEGEND



BASIS OF DESIGN: ALL CASEWORK MODEL NUMBERS DESIGNATED ON INTERIOR ELEVATIONS ARE FROM CASE SYSTEMS 2014 PRODUCT OFFERING CATALOG.
REFER TO MATERIAL LEGEND FOR FINISH REQUIREMENTS.
REFER TO SPECIFICATIONS FOR ADDITIONAL ACCEPTABLE MANUFACTURERS.

ACOUSTIC WALL PANEL KEY

- # 1 - 1" WOOD FIBER ACOUSTIC WALL PANELS ON 3-5/8" MTL STUD AT 16" OC WITH ACOUSTICAL INSULATION (GYM)
- # 2 - 2" THICK FABRIC WRAPPED ACOUSTIC PANEL CLIP MOUNTED
 - 2A. HUNTER (APF-2)
 - 2B. MOSS (APF-3)
 - 2C. SPRUCE (APF-4)
 - 2D. MIST (APF-5)
- # 3 - 2" THICK FABRIC WRAPPED BUILT-UP PANEL CLIP MOUNTED (1/2" PLYWOOD ON 2X WOOD BLOCKING)
 - 3A. HUNTER (APF-2)
 - 3B. MOSS (APF-3)
- # 4 - FABRIC WRAPPED ACOUSTIC DIFFUSER
 - 4A. HUNTER (APF-2)
 - 4B. MOSS (APF-3)
- # 5 - 1" HEXAGON TECTUM ACOUSTIC PANELS (COMMONS)

SHEET TITLE:
INTERIOR ELEVATIONS

GENERAL CONSTRUCTION NOTES

- A. PROVIDE FILLER PANELS AS REQUIRED AT CASEWORK & MILLWORK INSTALLATION LOCATIONS - TYP. SPECIFICALLY AT LOCATIONS WHERE CASEWORK IS ADJACENT TO WALL - PROVIDE FILLER PANELS FOR EASE OF OPENING & CLOSING CASEWORK DOORS & DRAWERS.
- B. ALL END PANELS SHALL BE FINISHED TO MATCH ADJACENT CABINETS / CASEWORK.
- C. PORCELAIN WALL TILE SHALL ALWAYS BEGIN WITH THE FULL TILE AT THE TOP OF THE ELEVATION. ADJACENT TO THE CEILING, THE CUT TILE SHALL ALWAYS BE AT THE BASE, ADJACENT TO THE FLOOR SURFACE, UNO.
- D. PROVIDE REGULAR CMU BEHIND FLUSH MOUNT FIXTURES AND DEVICES AT LOCATIONS WHERE SPLIT FACE CMU IS CALLED OUT.
- E. WALLS SHALL BE PAINTED PNT-1; UNO.
- F. WALL BASE SHALL BE RWB-1; UNO.
- G. COVE TILE BASE @ LOCKER ROOM(S) TO EXTEND AT LOCKER BASE, TYP.
- H. PROVIDE FILLER PANELS AS REQUIRED @ END(S) OF LOCKER RUN, TYP.
- I. PARGE ALL CMU WALLS AT PORCELAIN TILE INSTALLATION LOCATIONS, AS REQUIRED, FOR A SMOOTH AND CONSISTENT SUBSTRATE.

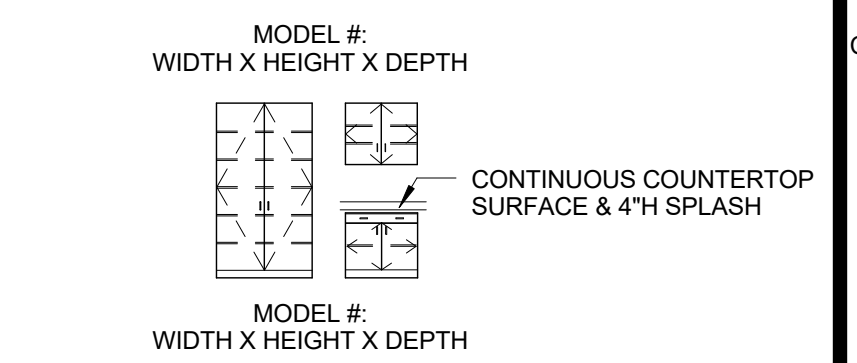
CONSTRUCTION KEYNOTES

- 1. TYPICAL CASEWORK:
 - FACE AND SIDE FINISH OF BASE AND UPPER CABINETS: PLAM-1
 - INTERIOR FINISH: WHITE MELAMINE
 - IF OPEN SHELF, INTERIOR FINISH SHALL BE PLAM-1
 - COUNTERTOP & 4" SPLASH: PLAM-2
 - HARDWARE PULLS: ADA COMPLIANT, 4" BAR PULL, BRUSHED NICKEL FINISH
- 2. TYPICAL CASEWORK W/ SINK @ BASE CABINET:
 - FACE AND SIDE FINISH OF BASE AND UPPER CABINETS: PLAM-1
 - INTERIOR FINISH: WHITE MELAMINE
 - COUNTERTOP & 4" SPLASH: SSM-1
 - HARDWARE PULLS: ADA COMPLIANT, 4" BAR PULL, BRUSHED NICKEL FINISH
- 3. CASEWORK @ MEDIA CENTER MAKER'S SPACE:
 - FACE AND SIDE FINISH OF BASE AND UPPER CABINETS: PLAM-7
 - INTERIOR FINISH: WHITE MELAMINE
 - COUNTERTOP & 18" BACK-SPLASH: SSM-5
 - HARDWARE PULLS: ADA COMPLIANT, 4" BAR PULL, BRUSHED NICKEL FINISH
- 4. CASEWORK @ MEDIA CENTER KIOSK:
 - FACE AND SIDE FINISH OF BASE CABINETS: PLAM-7
 - INTERIOR FINISH: WHITE MELAMINE
 - COUNTERTOP & 4" BACK-SPLASH: SSM-3
 - HARDWARE PULLS: ADA COMPLIANT, 4" BAR PULL, BRUSHED NICKEL FINISH
- 5. CASEWORK @ SCIENCE ROOMS:
 - FACE AND SIDE FINISH OF UPPER CABINETS: PLAM-7
 - FACE AND SIDE FINISH OF BASE CABINETS: PLAM-6
 - INTERIOR FINISH: WHITE MELAMINE
 - COUNTERTOP & 4" SPLASH: SSM-6
 - HARDWARE PULLS: ADA COMPLIANT, 4" BAR PULL, BRUSHED NICKEL FINISH
- 6. CLASSROOM STORAGE TOWER CASEWORK:
 - FACE AND SIDE FINISH: PLAM-8
 - INTERIOR FINISH: WHITE MELAMINE
 - HARDWARE PULLS: ADA COMPLIANT, 8" BAR PULL, BRUSHED NICKEL FINISH
- 7. Z-CLIP MOUNTED GYM WALL PADDING - REFER TO ARCH. SPECS FOR FULL DETAILS
- 8. Z-CLIP MOUNTED FULL LENGTH FITNESS MIRRORS - TEMPERED GLASS W/ STAINLESS STEEL CHANNEL EDGE @ TOP & BOTTOM (TYP.)
- 9. MILLWORK TEACHING WALL - ALL EXPOSED FACES SHALL BE COVERED WITH VNR-1.
- 10. ACCENT COLOR @ PAINTED GYP. BULKHEAD IN EXTENDED LEARNING AREA, AS WELL AS ABOVE LOCKERS IN THE CORRIDOR; VARIES PER FLOOR:
 - PNT - 4 @ LEVEL 1
 - PNT - 5 @ LEVEL 2
 - PNT - 6 @ LEVEL 3
- 11. CORRIDOR WINDOW MILLWORK SURROUND: ALL PANELS SHALL BE FINISHED IN WOOD VENEER; VNR-1 (REFER TO MATERIALS SCHEDULE & ASSOCIATED ARCHITECTURAL SPECIFICATION). 3 ACCENT PANELS SHALL BE INSTALLED PER LEVEL AS INDICATED.

- GREEN (PNT-4) LAQUERED PANEL @ L1
- BLUE (PNT-5) LAQUERED PANEL @ L2
- YELLOW (PNT-6) LAQUERED PANEL @ L3

- 12. 1/4" LAMINATED GLASS (BUTT GLAZED) IN HM FRAME (PNT-19), TYP. @ EXTENDED LEARNING.
- 13. 1" INSULATED GLAZING IN AL. STOREFRONT SYSTEM

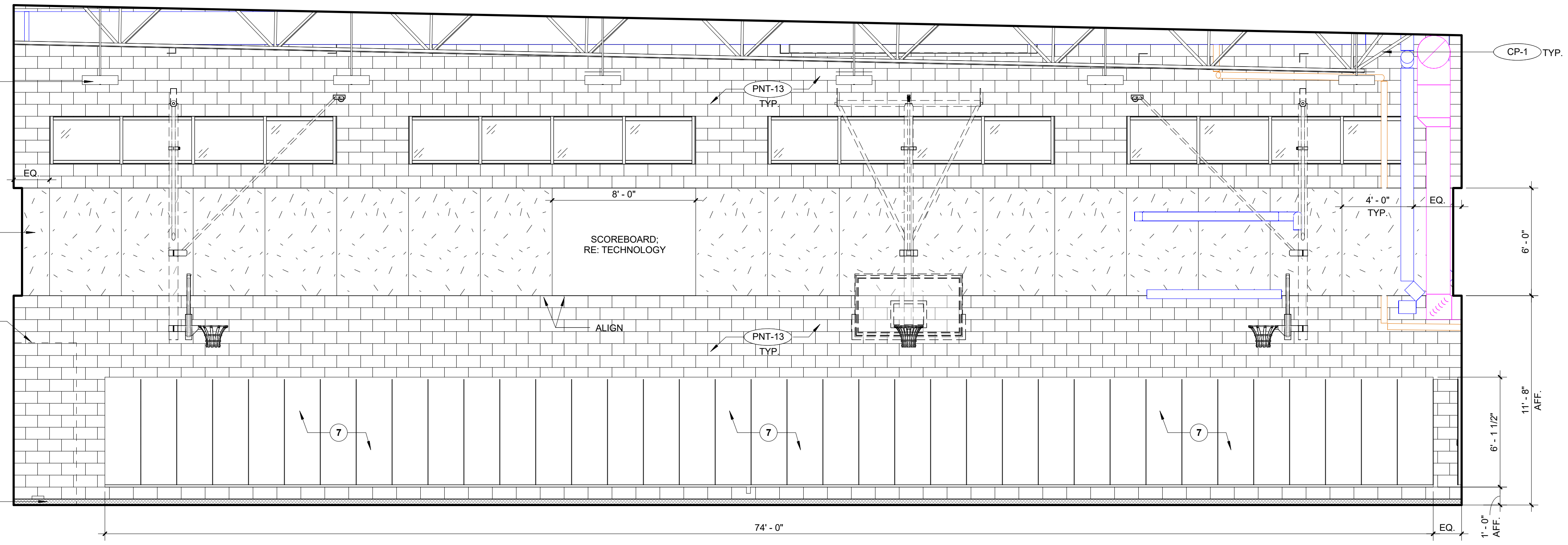
CASEWORK LEGEND



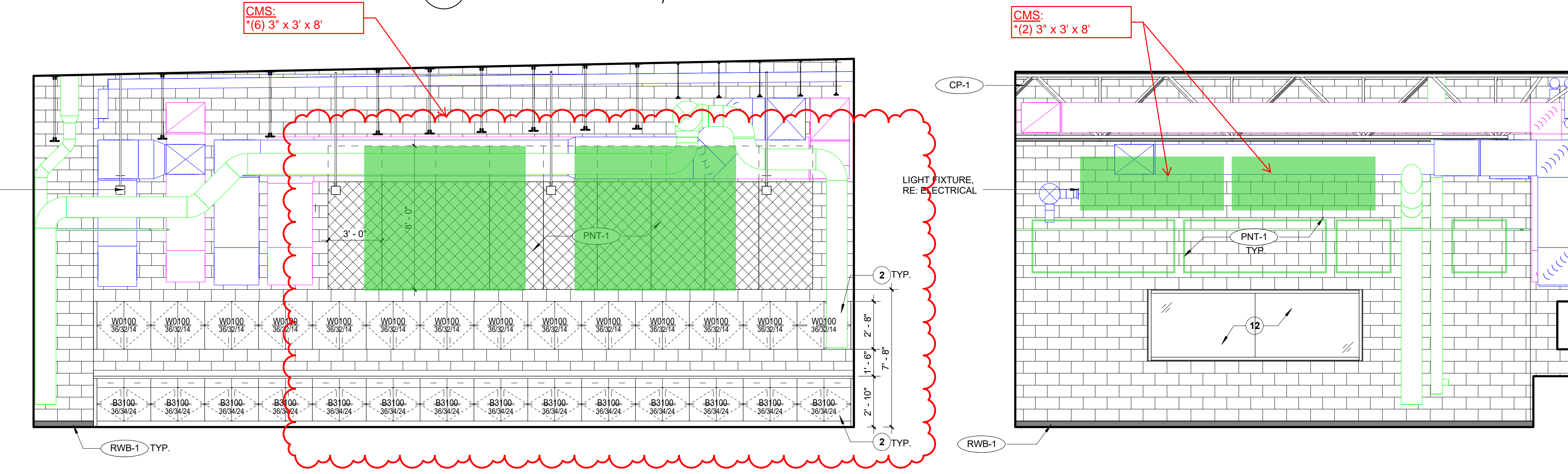
BASIS OF DESIGN: ALL CASEWORK MODEL NUMBERS DESIGNATED ON INTERIOR ELEVATIONS ARE FROM CASE SYSTEMS 2014 PRODUCT OFFERING CATALOG.
REFER TO MATERIAL LEGEND FOR FINISH REQUIREMENTS.
REFER TO SPECIFICATIONS FOR ADDITIONAL ACCEPTABLE MANUFACTURERS.

ACOUSTIC WALL PANEL KEY

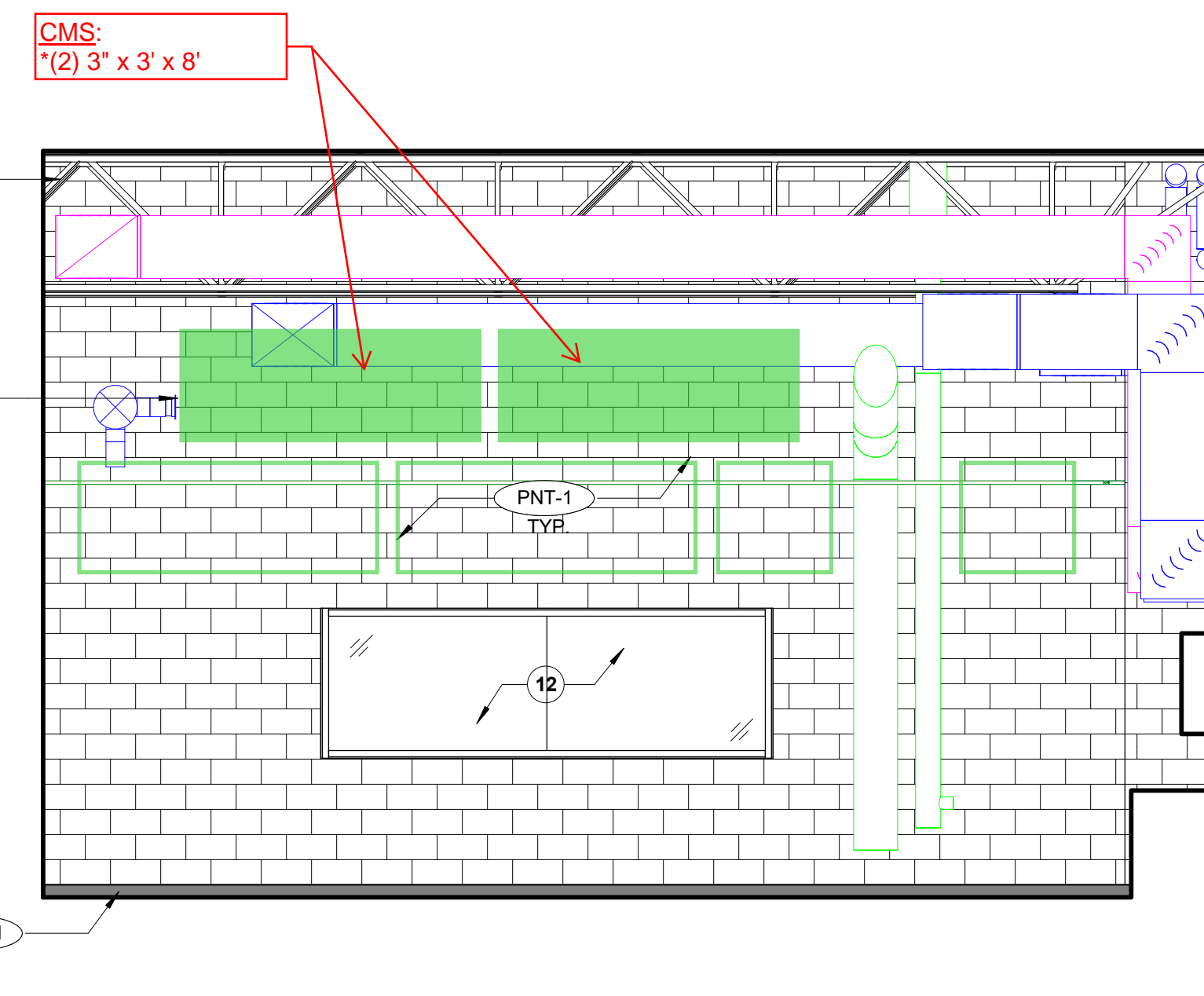
- # 1 - 1" WOOD FIBER ACOUSTIC WALL PANELS ON 3.58" MTL STUD AT 16" OC WITH ACOUSTICAL INSULATION (GYM)
- # 2 - 2" THICK FABRIC WRAPPED ACOUSTIC PANEL CLIP MOUNTED
 - 2A. HUNTER (APF-2)
 - 2B. MOSS (APF-3)
 - 2C. SPRUCE (APF-4)
 - 2D. MIST (APF-5)
- # 3 - 2" THICK FABRIC WRAPPED BUILT-UP PANEL CLIP MOUNTED (1/2" PLYWOOD ON 2X WOOD BLOCKING)
 - 3A. HUNTER (APF-2)
 - 3B. MOSS (APF-3)
- # 4 - FABRIC WRAPPED ACOUSTIC DIFFUSER
 - 4A. HUNTER (APF-2)
 - 4B. MOSS (APF-3)
- # 5 - 1" HEXAGON TECTUM ACOUSTIC PANELS (COMMONS)



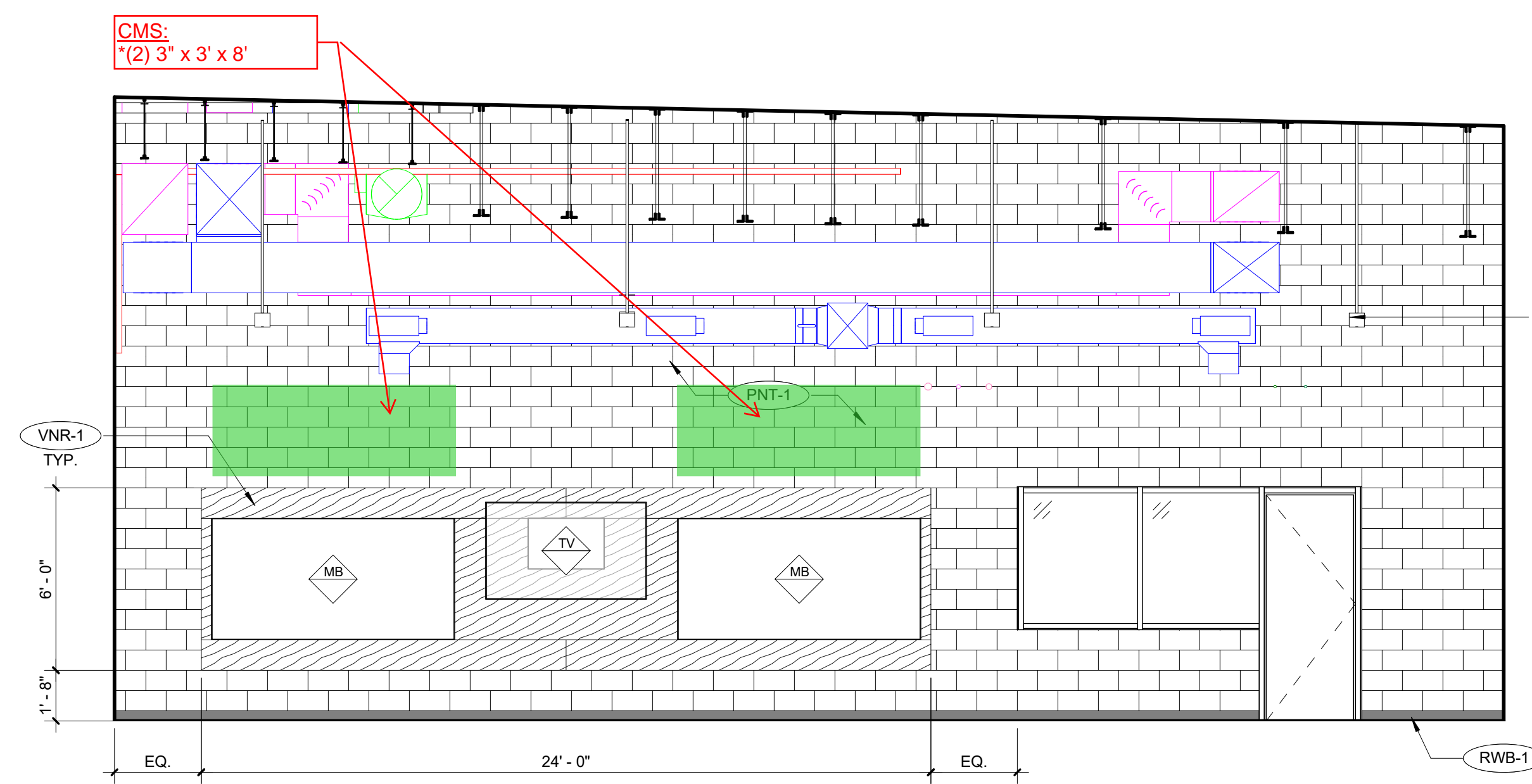
A220 EAST
1/4" = 1'-0" REFERENCED ON A4 / A112B



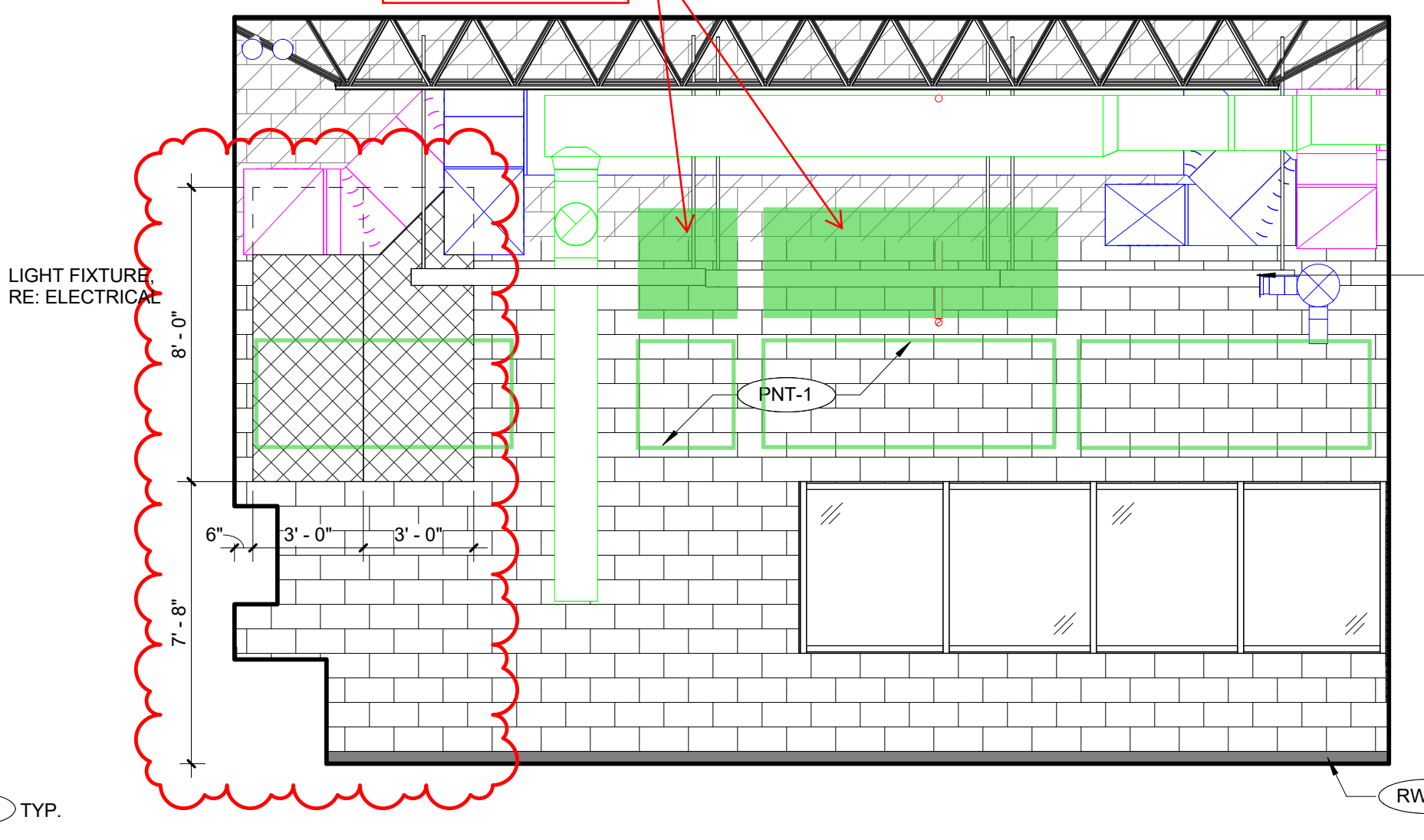
E4 B201 WEST
1/4" = 1'-0" REFERENCED ON A4 / A112B



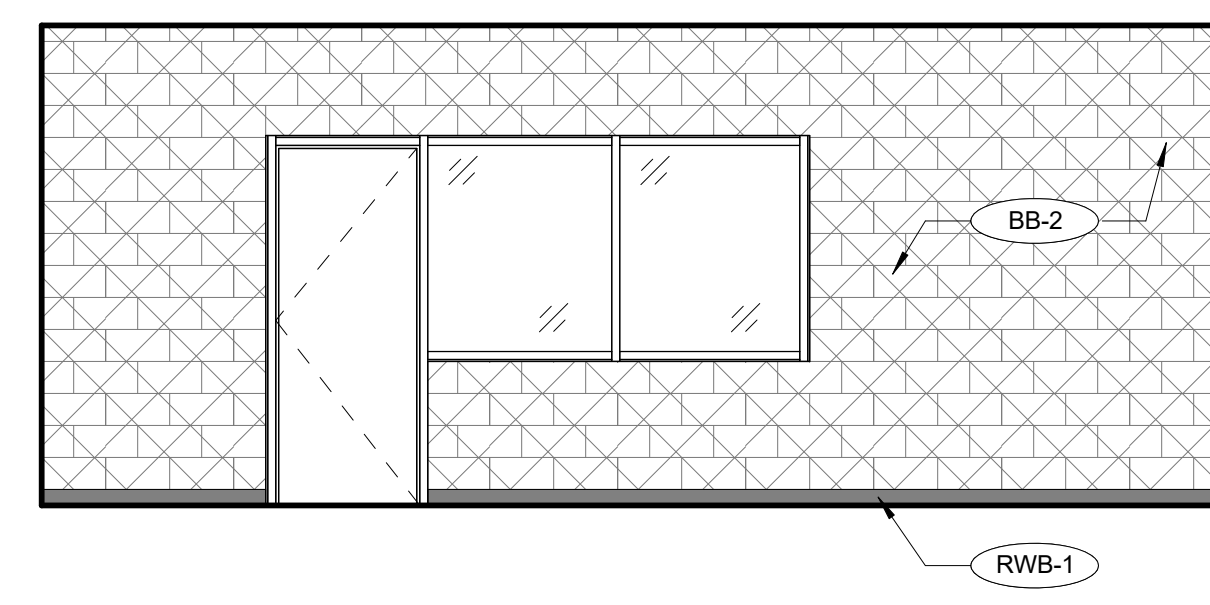
E6 B201 SOUTH
1/4" = 1'-0" REFERENCED ON A4 / A112B



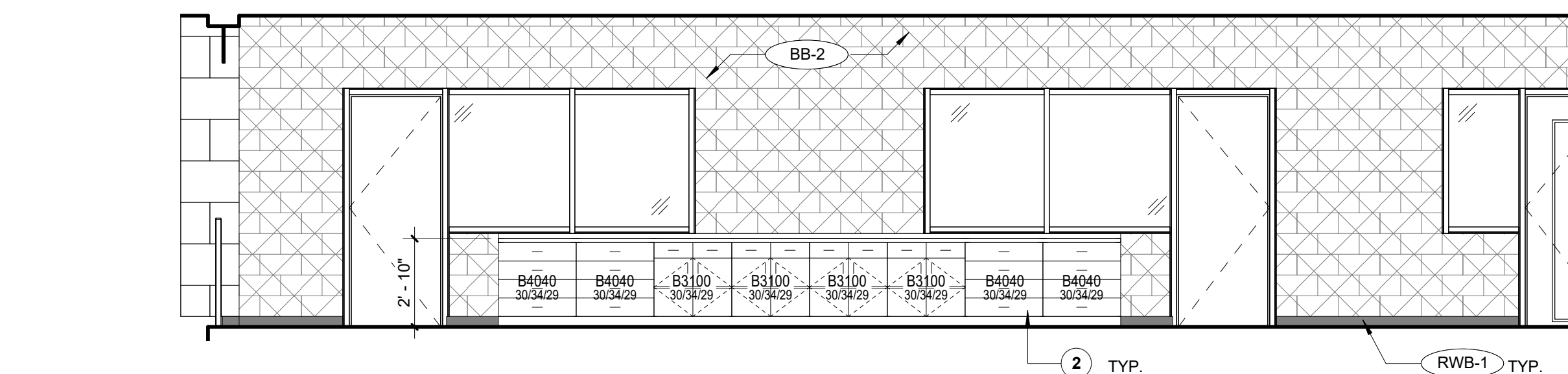
C2 B201 EAST
1/4" = 1'-0" REFERENCED ON A4 / A112B



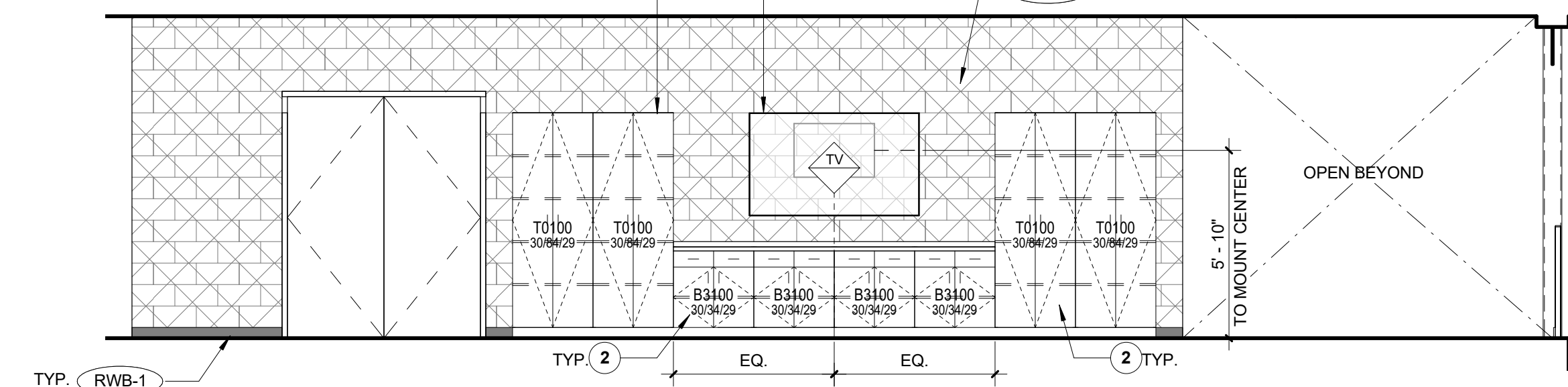
C4 B201 NORTH
1/4" = 1'-0" REFERENCED ON A4 / A112B



C6 B205 WEST
1/4" = 1'-0" REFERENCED ON A4 / A112B



A2 B205 SOUTH
1/4" = 1'-0" REFERENCED ON A4 / A112B



A6 B205 NORTH
1/4" = 1'-0" REFERENCED ON A4 / A112B

GENERAL CONSTRUCTION NOTES

- A. PROVIDE FILLER PANELS AS REQUIRED AT CASEWORK & MILLWORK INSTALLATION LOCATIONS - TYP. SPECIFICALLY AT LOCATIONS WHERE CASEWORK IS ADJACENT TO WALL - PROVIDE FILLER PANELS FOR CASE OF OPENING & CLOSING CASEWORK DOORS & DRAWERS.
- B. ALL END PANELS SHALL BE FINISHED TO MATCH ADJACENT CABINERY / CASEWORK.
- C. PORCELAIN WALL TILE SHALL ALWAYS BEGIN WITH THE FULL TILE AT THE TOP OF THE ELEVATION, ADJACENT TO THE CEILING. THE CUT TILE SHALL ALWAYS BE AT THE BASE, ADJACENT TO THE FLOOR SURFACE, UNO.
- D. PROVIDE REGULAR CMU BEHIND FLUSH MOUNT FIXTURES AND DEVICES AT LOCATIONS WHERE SPLIT FACE CMU IS CALLED OUT.
- E. WALLS SHALL BE PAINTED PNT-1, UNO.
- F. WALL BASE SHALL BE RWB-1, UNO.
- G. COVE TILE BASE @ LOCKER ROOM(S) TO EXTEND AT LOCKER BASE, TYP.
- H. PROVIDE FILLER PANELS AS REQUIRED @ END(S) OF LOCKER RUN, TYP.
- I. PARGE ALL CMU WALLS AT PORCELAIN TILE INSTALLATION LOCATIONS, AS REQUIRED, FOR A SMOOTH AND CONSISTENT SUBSTRATE.

CONSTRUCTION KEYNOTES

- 1. TYPICAL CASEWORK:
 - FACE AND SIDE FINISH OF BASE AND UPPER CABINERY: PLAM-1
 - INTERIOR FINISH: WHITE MELAMINE
 - IF OPEN SHELF, INTERIOR FINISH SHALL BE PLAM-1
 - COUNTERTOP & 4" H SPLASH: PLAM-2
 - HARDWARE PULLS: ADA COMPLIANT, 4" BAR PULL, BRUSHED NICKEL FINISH
- 2. TYPICAL CASEWORK W/ SINK @ BASE CABINET:
 - FACE AND SIDE FINISH OF BASE AND UPPER CABINERY: PLAM-1
 - INTERIOR FINISH: WHITE MELAMINE
 - COUNTERTOP & 4" H SPLASH: SSM-1
 - HARDWARE PULLS: ADA COMPLIANT, 4" BAR PULL, BRUSHED NICKEL FINISH
- 3. CASEWORK @ MEDIA CENTER MAKER'S SPACE:
 - FACE AND SIDE FINISH OF BASE AND UPPER CABINERY: PLAM-7
 - INTERIOR FINISH: WHITE MELAMINE
 - COUNTERTOP & 4" H SPLASH: SSM-3
 - HARDWARE PULLS: ADA COMPLIANT, 4" BAR PULL, BRUSHED NICKEL FINISH
- 4. CASEWORK @ MEDIA CENTER KIOSK:
 - FACE AND SIDE FINISH OF BASE CABINERY: PLAM-7
 - INTERIOR FINISH: WHITE MELAMINE
 - COUNTERTOP & 4" H SPLASH: SSM-3
 - HARDWARE PULLS: ADA COMPLIANT, 4" BAR PULL, BRUSHED NICKEL FINISH
- 5. CASEWORK @ SCIENCE ROOMS:
 - FACE AND SIDE FINISH OF BASE CABINERY: PLAM-7
 - FACE AND SIDE FINISH OF UPPER CABINERY: PLAM-6
 - INTERIOR FINISH: WHITE MELAMINE
 - COUNTERTOP & 4" H SPLASH: SSM-4
 - HARDWARE PULLS: ADA COMPLIANT, 4" BAR PULL, BRUSHED NICKEL FINISH
- 6. CLASSROOM STORAGE TOWER CASEWORK:
 - FACE AND SIDE FINISH: PLAM-8
 - INTERIOR FINISH: WHITE MELAMINE
 - HARDWARE PULLS: ADA COMPLIANT, 8" BAR PULL, BRUSHED NICKEL FINISH
- 7. Z-CLIP MOUNTED GYM WALL PADDING - REFER TO ARCH. SPEC. FOR DETAILS.
- 8. Z-CLIP MOUNTED FULL LENGTH FITNESS MIRRORS - TEMPERED GLASS W/ STAINLESS STEEL U-CHANNEL EDGE @ TOP & BOTTOM (TYP.)
- 9. MILLWORK TEACHING WALL - ALL EXPOSED FACES SHALL BE COVERED WITH VNR-1.
- 10. ACCENT COLOR @ PAINTED GYP. BULKHEAD IN EXTENDED LEARNING AREA, AS WELL AS ABOVE LOCKERS IN THE CORRIDOR. VARIES PER FLOOR:
 - PNT-4 @ LEVEL 1
 - PNT-5 @ LEVEL 2
 - PNT-6 @ LEVEL 3
- 11. CORRIDOR WINDOW MILLWORK SURROUND: ALL PANELS SHALL BE FINISHED IN WOOD VENEER: VNR-1 (REFER TO MATERIALS SCHEDULE & ASSOCIATED ARCHITECTURAL SPECIFICATION). 3 ACCENT PANELS SHALL BE INSTALLED PER LEVEL AS INDICATED.
 - GREEN (PNT-4) LAQUERED PANEL @ L1
 - BLUE (PNT-5) LAQUERED PANEL @ L2
 - YELLOW (PNT-6) LAQUERED PANEL @ L3

Final Plans for Bidding and Construction

PORTAGE PUBLIC SCHOOLS

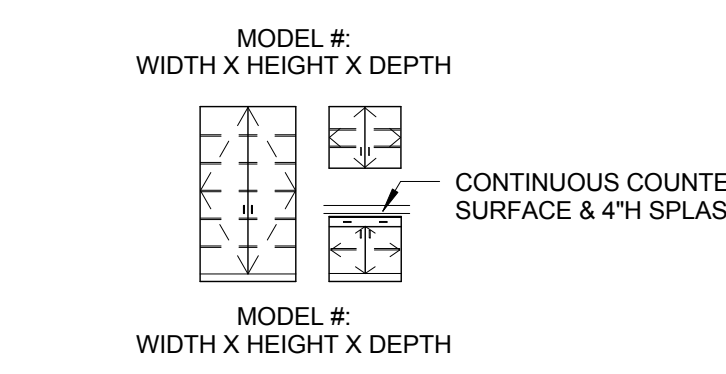
Portage Public Schools
THE FUTURE LEARNS HERE

CENTRAL MIDDLE SCHOOL
PORTAGE, MICHIGAN

DRAWN: Author
CHECKED: Checker
SCALE: As Indicated
UNLESS NOTED OTHERWISE

ISSUE: 2018.01.19 CONSTRUCTION

CASEWORK LEGEND



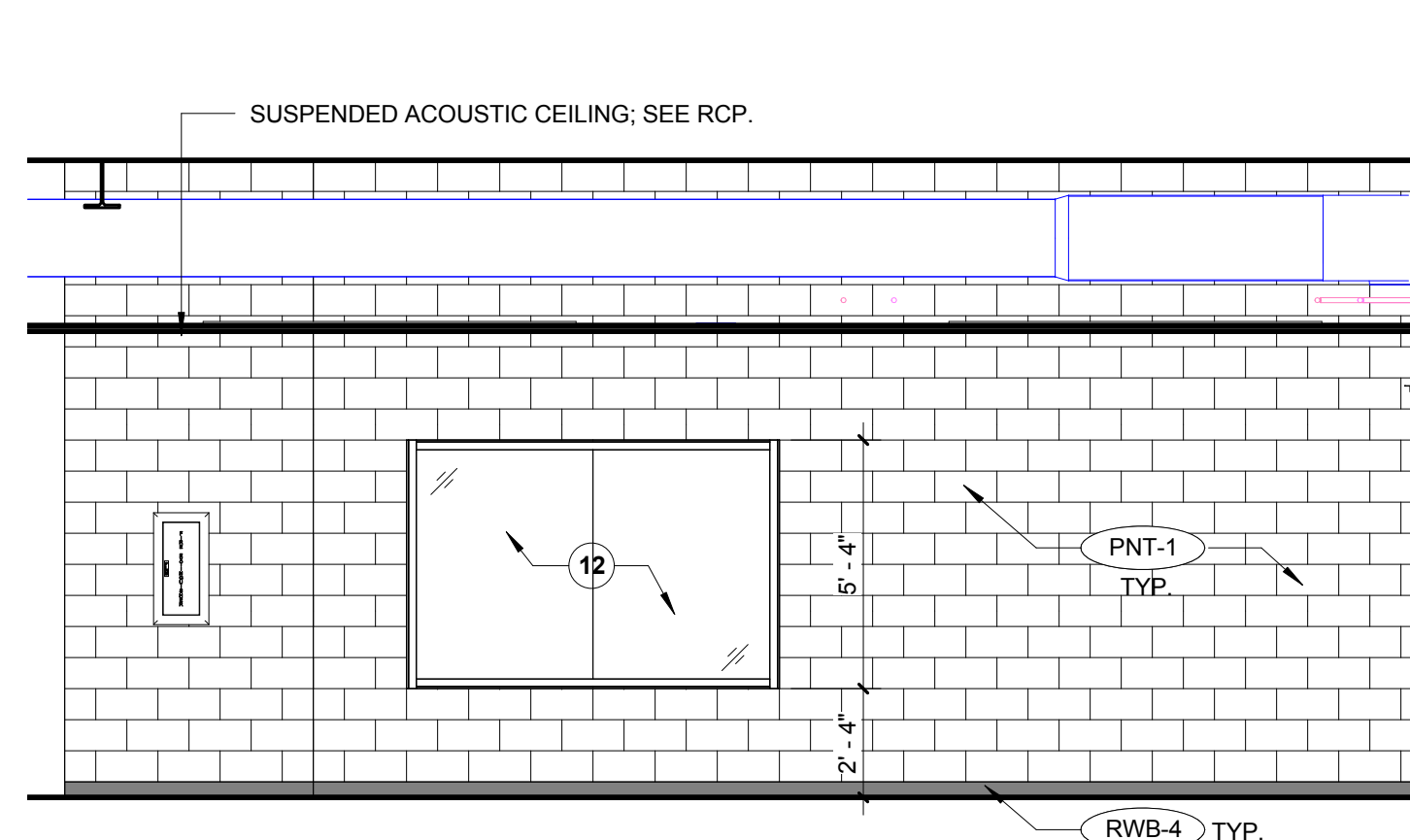
BASIS OF DESIGN: ALL CASEWORK MODEL NUMBERS DESIGNATED ON INTERIOR ELEVATIONS ARE FROM CASE SYSTEMS 2014 PRODUCT OFFERING CATALOG.
REFER TO MATERIAL LEGEND FOR FINISH REQUIREMENTS.
REFER TO SPECIFICATIONS FOR ADDITIONAL ACCEPTABLE MANUFACTURERS.

ACOUSTIC WALL PANEL KEY

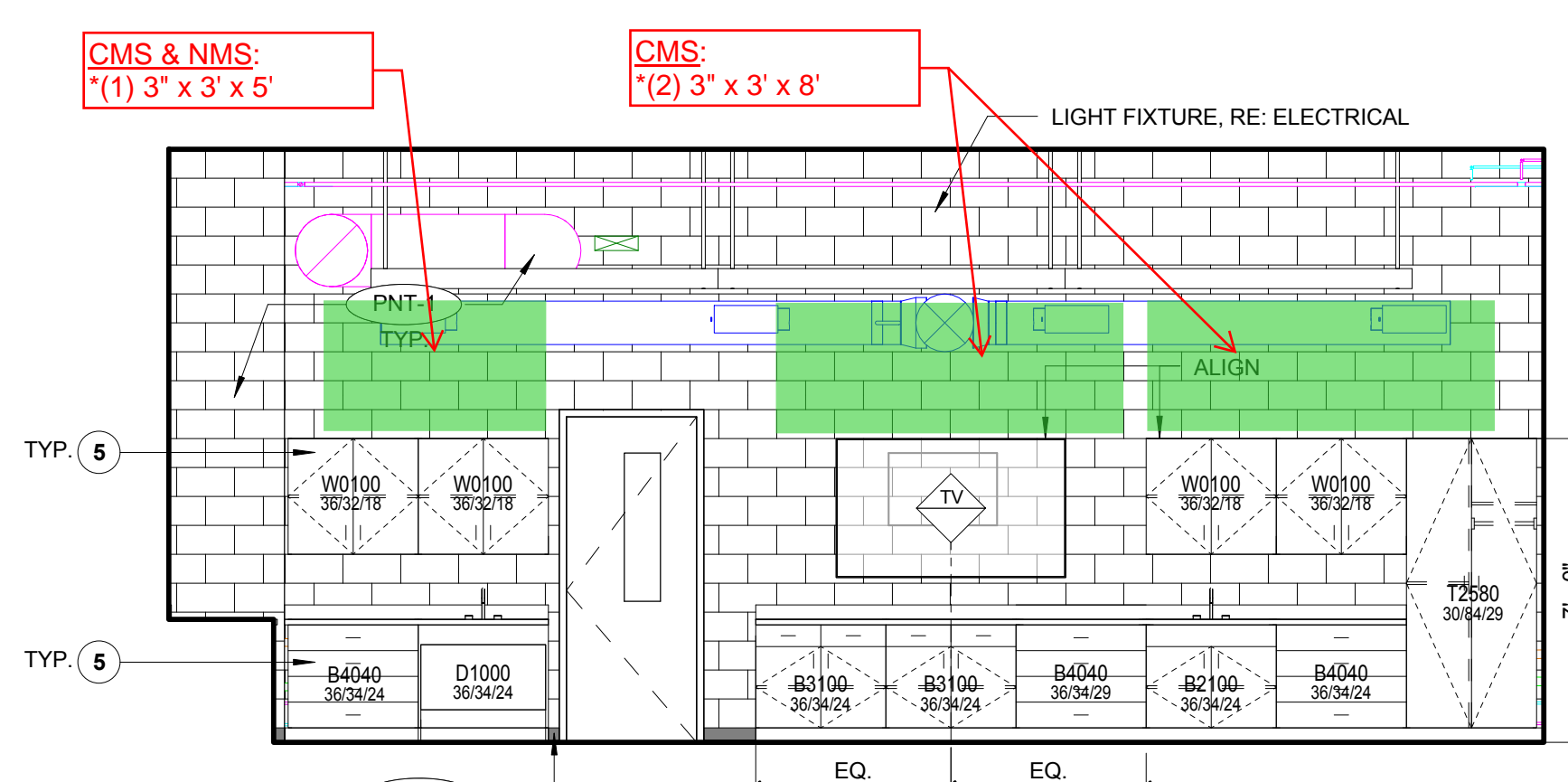
- # 1 - 1" WOOD FIBER ACOUSTIC WALL PANELS ON 3-5/8" MTL. STUD AT 16" OC WITH ACOUSTICAL INSULATION (GYM)
- # 2 - 2" THICK FABRIC WRAPPED ACOUSTIC PANEL CLIP MOUNTED
 - 2A. HUNTER (APF-2)
 - 2B. MOSS (APF-3)
 - 2C. SPRUCE (APF-4)
 - 2D. MIST (APF-5)
- # 3 - 2" THICK FABRIC WRAPPED BUILT-UP PANEL CLIP MOUNTED (1/2" PLYWOOD ON 2X WOOD BLOCKING)
 - 3A. HUNTER (APF-2)
 - 3B. MOSS (APF-3)
- # 4 - FABRIC WRAPPED ACOUSTIC DIFFUSER
 - 4A. HUNTER (APF-2)
 - 4B. MOSS (APF-3)
- # 5 - 1" HEXAGON TECTUM ACOUSTIC PANELS (COMMONS)

SHEET TITLE:
INTERIOR ELEVATIONS

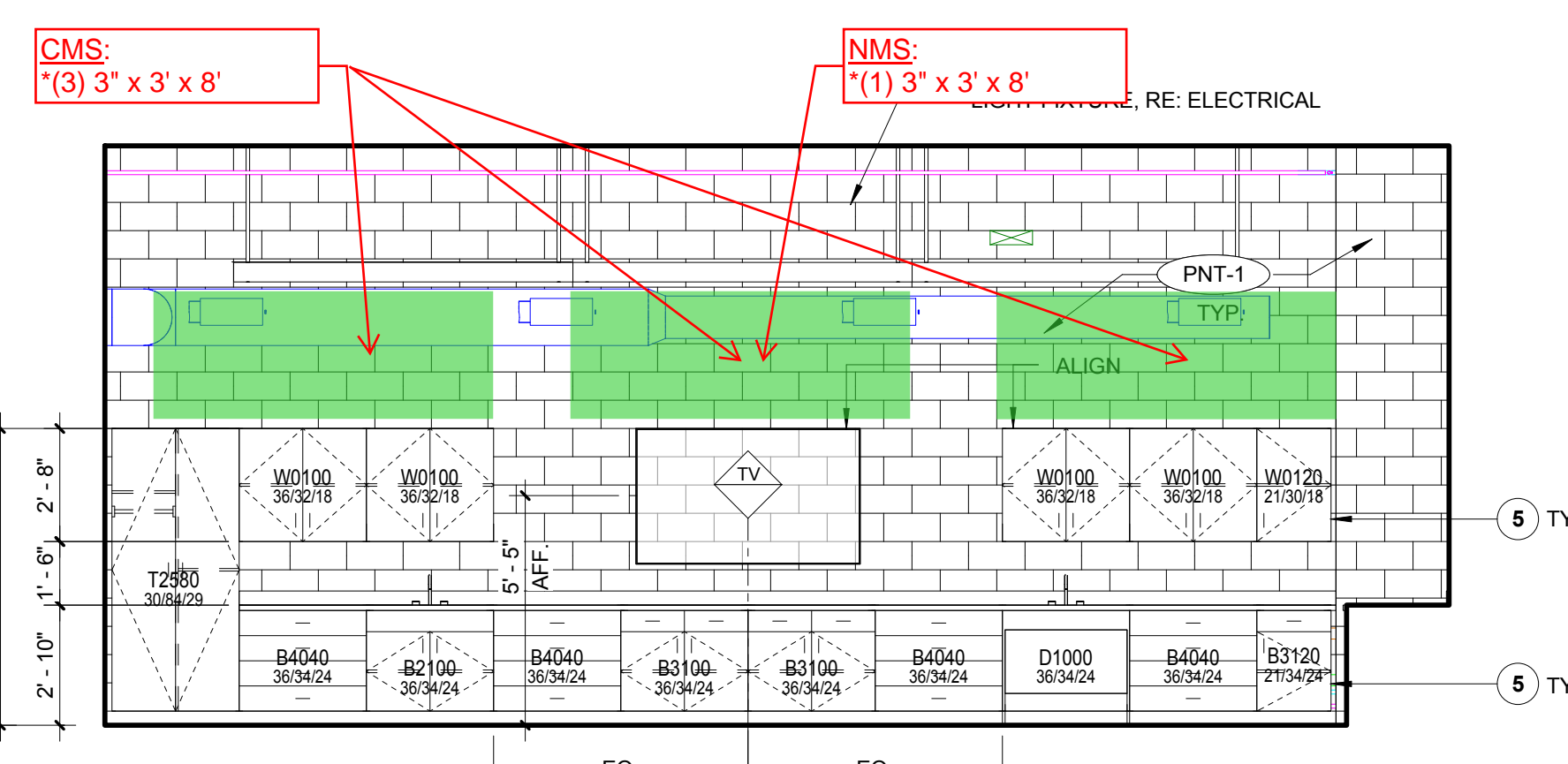
A407
214100243



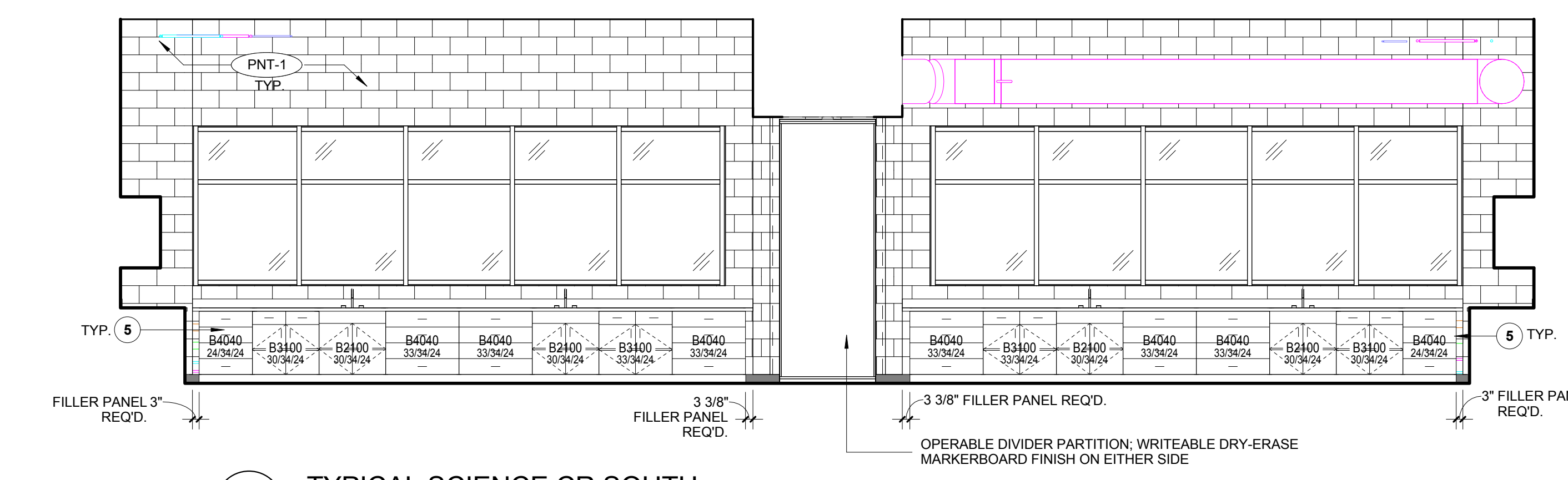
G2 L1C - LEARNING COMMONS ENTRY 2 CORRIDOR
1/4" = 1'-0" REFERENCED ON A4 / A1111C



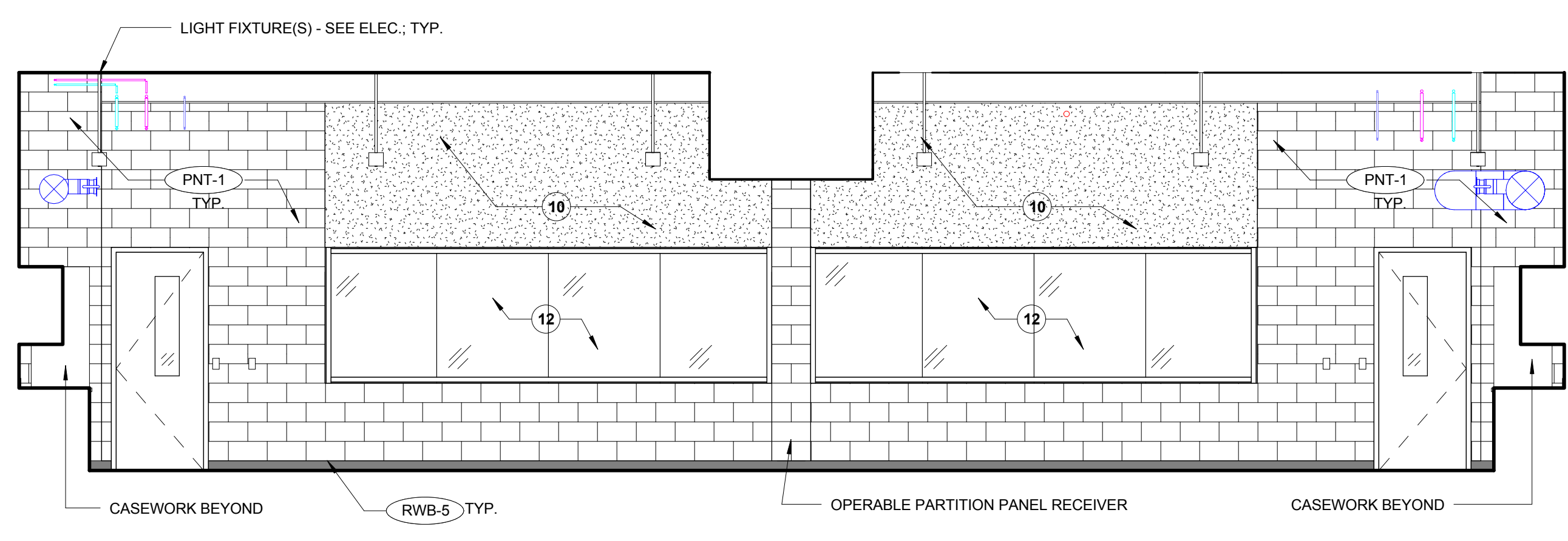
G4 TYPICAL SCIENCE CR WEST
1/4" = 1'-0" REFERENCED ON A4 / A1111B



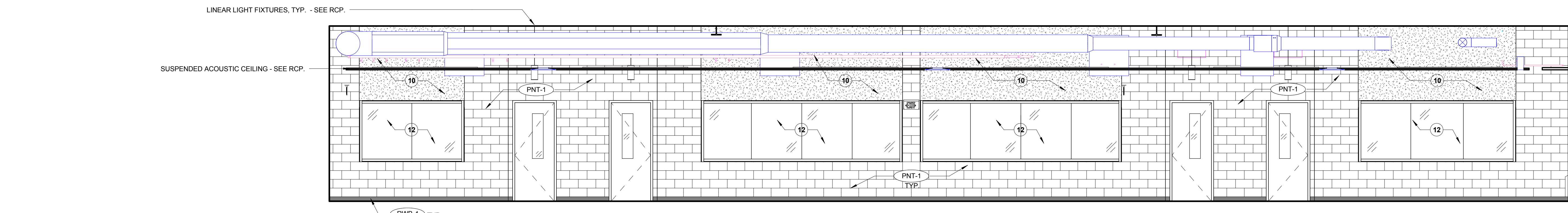
G6 TYPICAL SCIENCE CR EAST
1/4" = 1'-0" REFERENCED ON A4 / A1111E



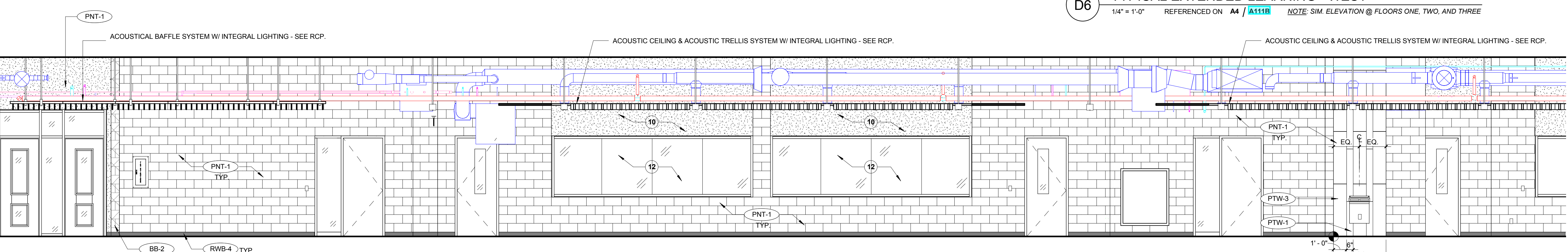
F2 TYPICAL SCIENCE CR SOUTH
1/4" = 1'-0" REFERENCED ON A4 / A1111C



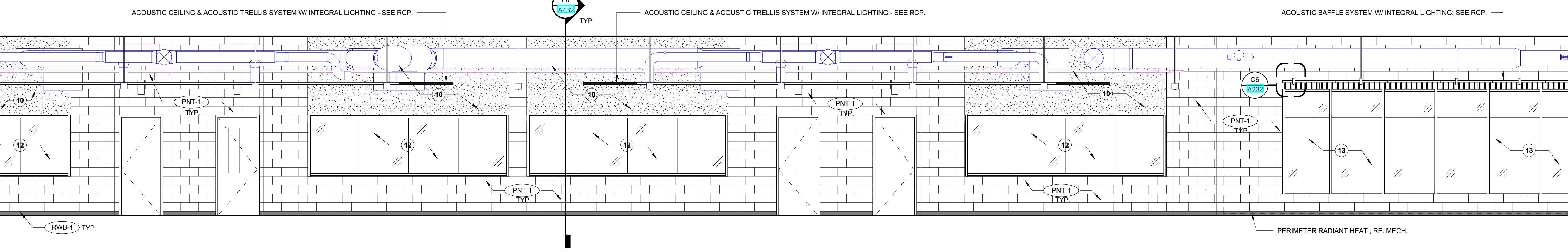
F6 AREA C - SCIENCE CR - NORTH
1/4" = 1'-0" REFERENCED ON A4 / A1111C



D6 TYPICAL EXTENDED LEARNING - WEST
1/4" = 1'-0" REFERENCED ON A4 / A1111E NOTE: SIM. ELEVATION @ FLOORS ONE, TWO, AND THREE



C6 TYPICAL EXTENDED LEARNING - SOUTH
1/4" = 1'-0" REFERENCED ON A4 / A1111A NOTE: SIM. ELEVATION @ FLOORS ONE, TWO, AND THREE



A6 TYPICAL EXTENDED LEARNING - NORTH
1/4" = 1'-0" REFERENCED ON A4 / A1111A NOTE: SIM. ELEVATION @ FLOORS ONE, TWO, AND THREE

GENERAL CONSTRUCTION NOTES

- A. PROVIDE FILLER PANELS AS REQUIRED AT CASEWORK & MILLWORK INSTALLATION LOCATIONS - TYP. SPECIFICALLY AT LOCATIONS WHERE CASEWORK IS ADJACENT TO WALL - PROVIDE FILLER PANELS FOR EASE OF OPENING & CLOSING CASEWORK DOORS & DRAWERS.
- B. ALL END PANELS SHALL BE FINISHED TO MATCH ADJACENT CABINETRY / CASEWORK.
- C. PORCELAIN WALL TILE SHALL ALWAYS BEGIN WITH THE FULL TILE AT THE TOP OF THE ELEVATION, ADJACENT TO THE CEILING. THE CUT TILE SHALL ALWAYS BE AT THE BASE, ADJACENT TO THE FLOOR SURFACE, UNO.
- D. PROVIDE REGULAR CMU BEHIND FLUSH MOUNT FIXTURES AND DEVICES AT LOCATIONS WHERE SPLIT FACE CMU IS CALLED OUT.
- E. WALLS SHALL BE PAINTED PNT-1; UNO.
- F. WALL BASE SHALL BE RWB-1; UNO.
- G. COVE TILE BASE @ LOCKER ROOM(S) TO EXTEND AT LOCKER BASE, TYP.
- H. PROVIDE FILLER PANELS AS REQUIRED @ END(S) OF LOCKER RUN, TYP.
- I. PARGE ALL CMU WALLS AT PORCELAIN TILE INSTALLATION LOCATIONS, AS REQUIRED, FOR A SMOOTH AND CONSISTENT SUBSTRATE.

CONSTRUCTION KEYNOTES

- 1 TYPICAL CASEWORK:
 - FACE AND SIDE FINISH OF BASE AND UPPER CABINETRY: PLAM-1
 - INTERIOR FINISH: WHITE MELAMINE
 - IF OPEN SHELF, INTERIOR FINISH SHALL BE PLAM-1
 - COUNTERTOP & 4TH SPLASH: PLAM-2
 - HARDWARE PULLS: ADA COMPLIANT, 4" BAR PULL, BRUSHED NICKEL FINISH
- 2 TYPICAL CASEWORK W/ SINK @ BASE CABINET:
 - FACE AND SIDE FINISH OF BASE AND UPPER CABINETRY: PLAM-1
 - INTERIOR FINISH: WHITE MELAMINE
 - COUNTERTOP & 4TH SPLASH: SSM-1
 - HARDWARE PULLS: ADA COMPLIANT, 4" BAR PULL, BRUSHED NICKEL FINISH
- 3 CASEWORK @ MEDIA CENTER MAKER'S SPACE:
 - FACE AND SIDE FINISH OF BASE AND UPPER CABINETRY: PLAM-7
 - INTERIOR FINISH: WHITE MELAMINE
 - COUNTERTOP & 4TH SPLASH: SSM-5
 - HARDWARE PULLS: ADA COMPLIANT, 4" BAR PULL, BRUSHED NICKEL FINISH
- 4 CASEWORK @ MEDIA CENTER KIOSK:
 - FACE AND SIDE FINISH OF BASE CABINETRY: PLAM-7
 - INTERIOR FINISH: WHITE MELAMINE
 - COUNTERTOP & 4TH SPLASH: SSM-3
 - HARDWARE PULLS: ADA COMPLIANT, 4" BAR PULL, BRUSHED NICKEL FINISH
- 5 CASEWORK @ SCIENCE ROOMS:
 - FACE AND SIDE FINISH OF UPPER CABINETRY: PLAM-7
 - FACE AND SIDE FINISH OF BASE CABINETRY: PLAM-6
 - INTERIOR FINISH: WHITE MELAMINE
 - COUNTERTOP & 4TH SPLASH: SSM-6
 - HARDWARE PULLS: ADA COMPLIANT, 4" BAR PULL, BRUSHED NICKEL FINISH
- 6 CLASSROOM STORAGE TOWER CASEWORK:
 - FACE AND SIDE FINISH: PLAM-8
 - INTERIOR FINISH: WHITE MELAMINE
 - HARDWARE PULLS: ADA COMPLIANT, 8" BAR PULL, BRUSHED NICKEL FINISH
- 7 Z-CLIP MOUNTED GYM WALL PADDING - REFER TO ARCH. SPECS FOR FULL DETAILS
- 8 Z-CLIP MOUNTED FULL LENGTH FITNESS MIRRORS - TEMPERED GLASS W/ STAINLESS STEEL U-CHANNEL EDGE @ TOP & BOTTOM (TYP.)
- 9 MILLWORK TEACHING WALL - ALL EXPOSED FACES SHALL BE COVERED WITH VNR-1.
- 10 ACCENT COLOR @ PAINTED GYP. BULKHEAD IN EXTENDED LEARNING AREA, AS WELL AS ABOVE LOCKERS IN THE CORRIDOR. VARIES PER FLOOR:
 - PNT - 4 @ LEVEL 1
 - PNT - 5 @ LEVEL 2
 - PNT - 6 @ LEVEL 3
- 11 CORRIDOR WINDOW MILLWORK SURROUND: ALL PANELS SHALL BE FINISHED IN WOOD VENEER: VNR-1 (REFER TO MATERIALS SCHEDULE & ASSOCIATED ARCHITECTURAL SPECIFICATION). 3 ACCENT PANELS SHALL BE INSTALLED PER LEVEL AS INDICATED:
 - GREEN (PNT-4) LAQUERED PANEL @ L1
 - BLUE (PNT-5) LAQUERED PANEL @ L2
 - YELLOW (PNT-6) LAQUERED PANEL @ L3
- 12 1/4" LAMINATED GLASS (BUTT GLAZED) IN HM FRAME (PNT-19), TYP. @ EXTENDED LEARNING.
- 13 1" INSULATED GLAZING IN AL. STOREFRONT SYSTEM

Final Plans for Bidding and Construction

PORTAGE PUBLIC SCHOOLS

Portage Public Schools
THE FUTURE LEARNS HERE

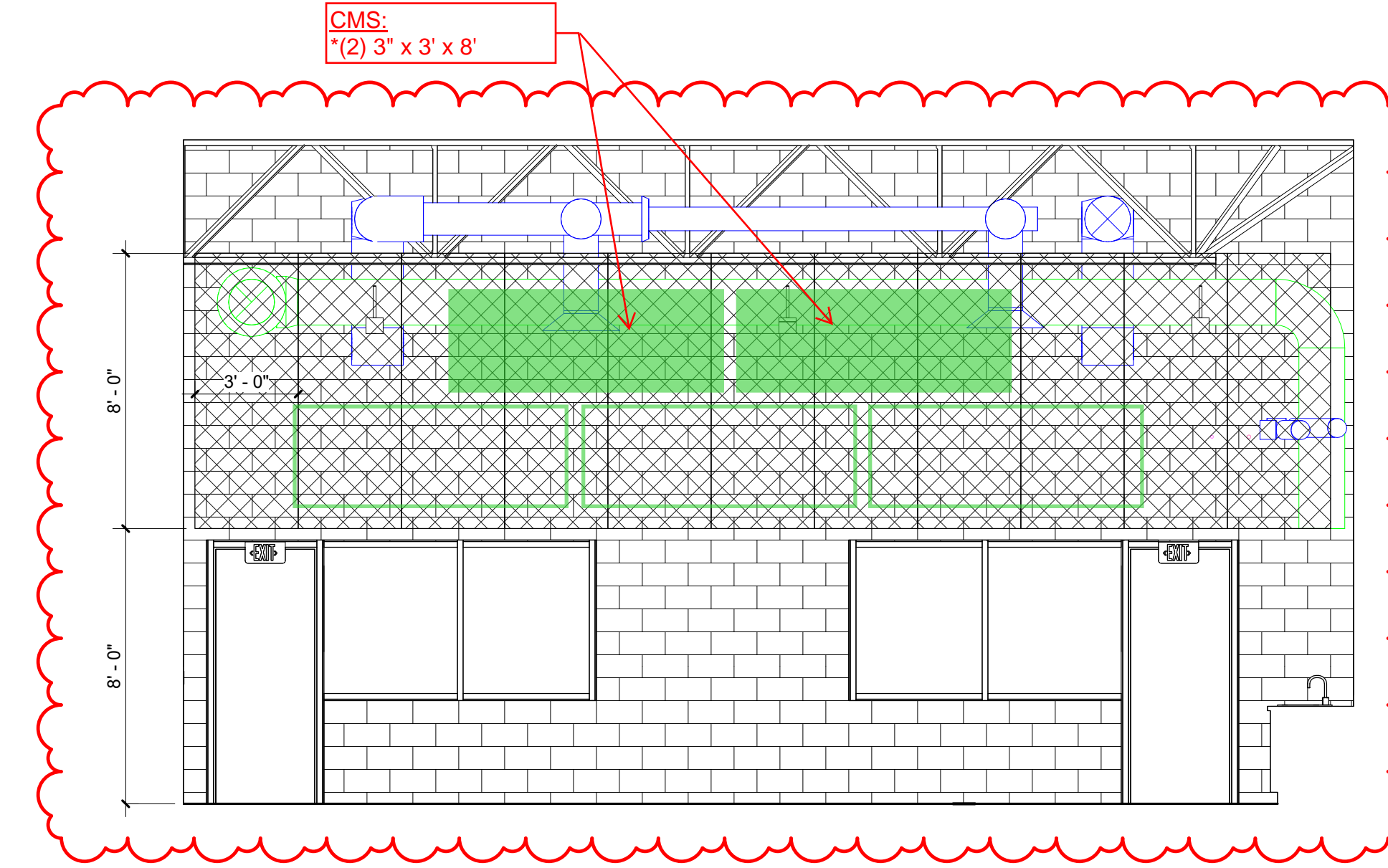
CENTRAL MIDDLE SCHOOL
PORTAGE, MICHIGAN

DRAWN: Author
CHECKED: Checker
SCALE: As Indicated
UNLESS NOTED OTHERWISE

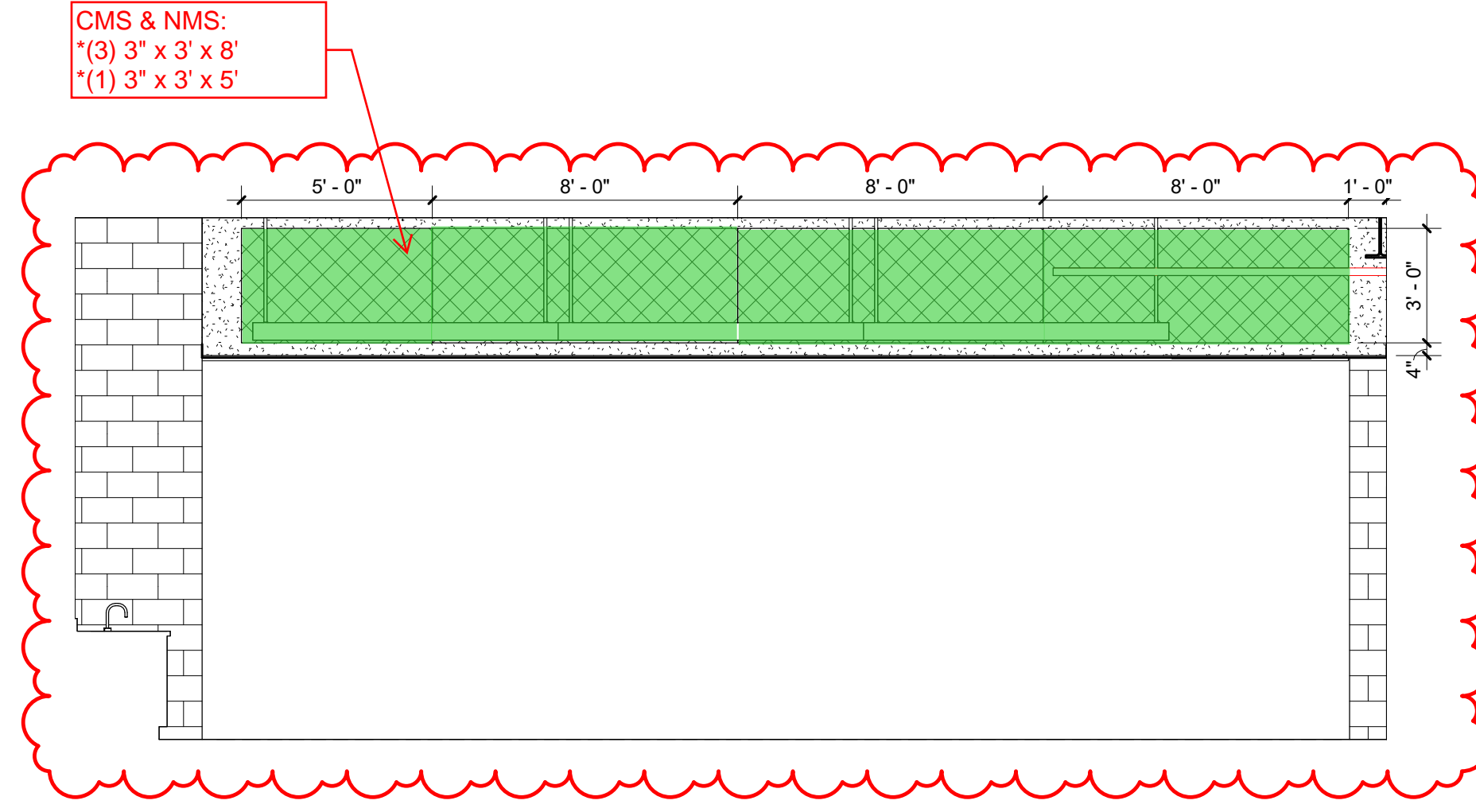
ISSUE:
2019.12.12 PR 11
2020.01.13 PR 13

SHEET TITLE:
INTERIOR ELEVATIONS

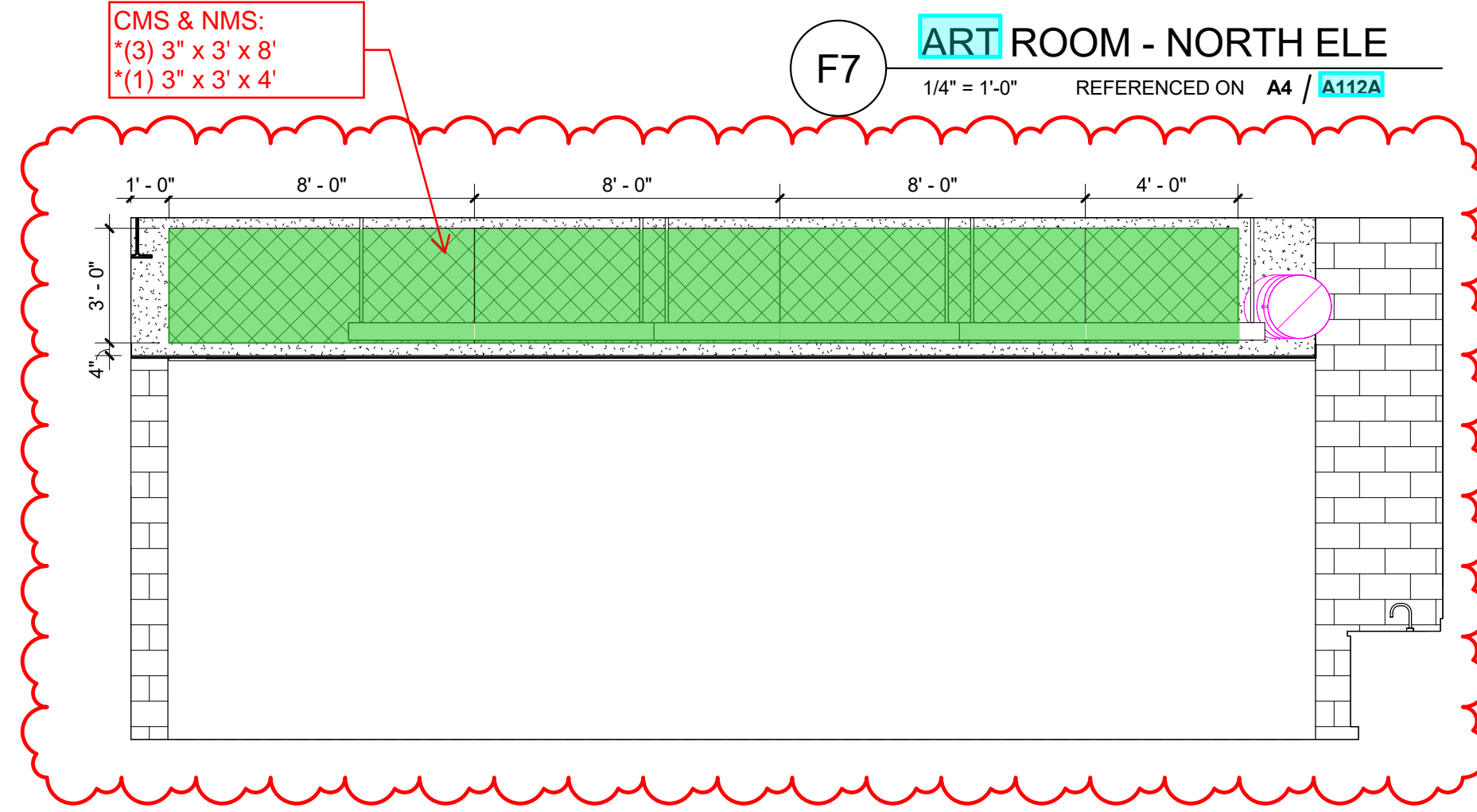
A413



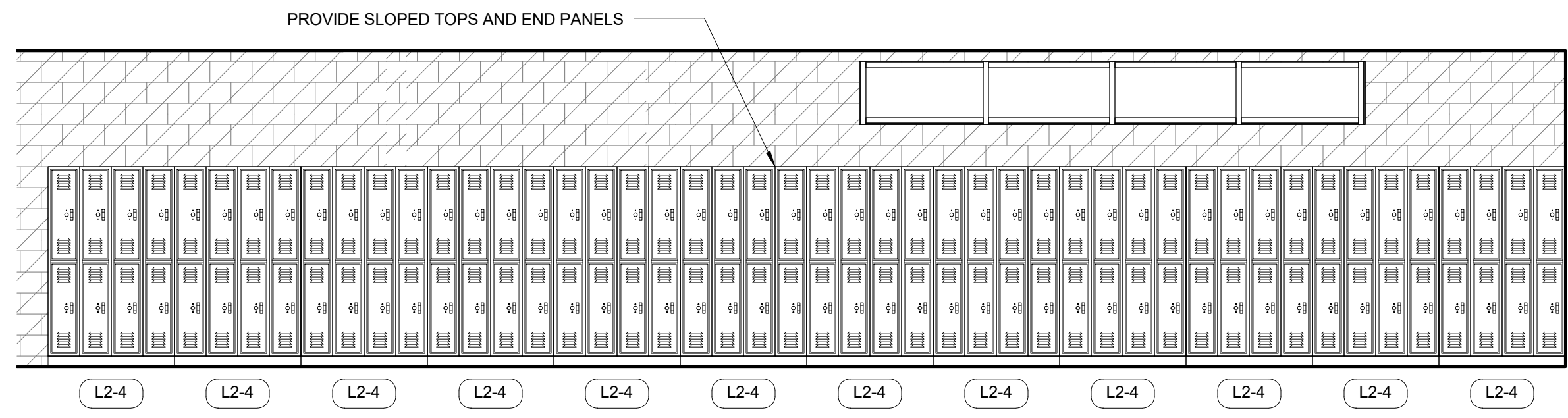
F7 ART ROOM - NORTH ELE
1/4" = 1'-0" REFERENCED ON A4 / A112A



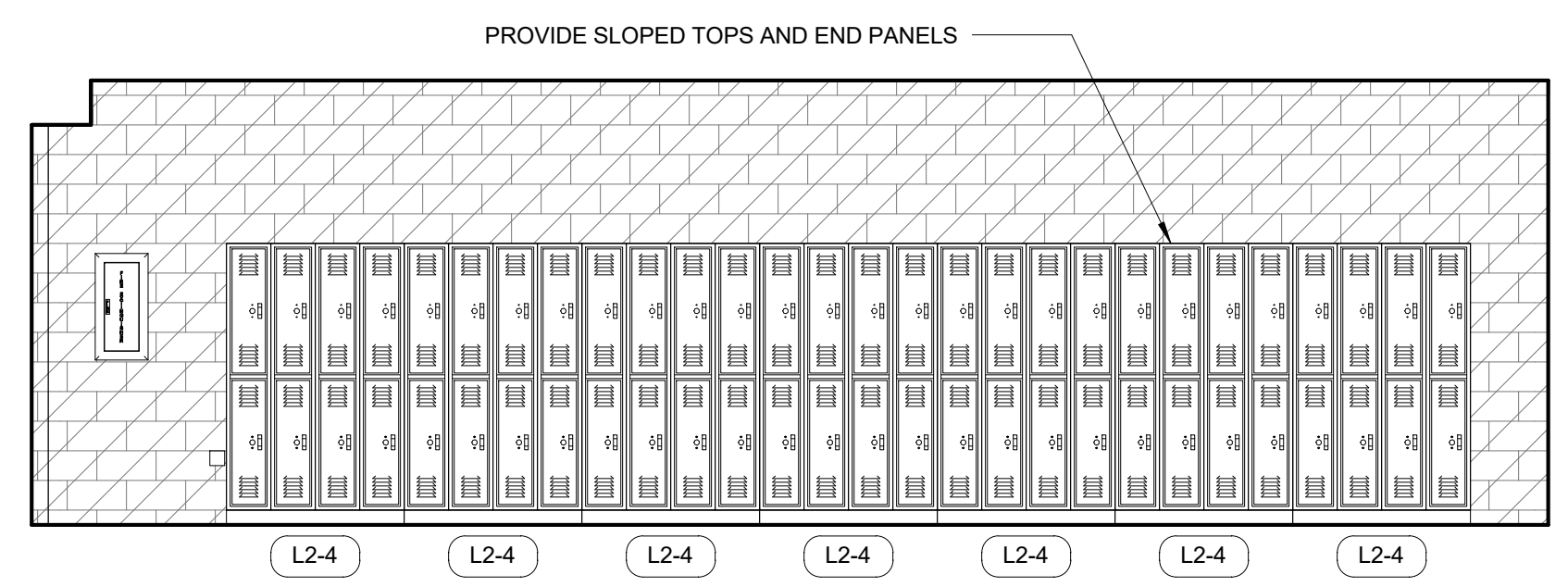
E4 TYP. SCIENCE CLASSROOM @ PARTITION
1/4" = 1'-0" REFERENCED ON A4 / A111B



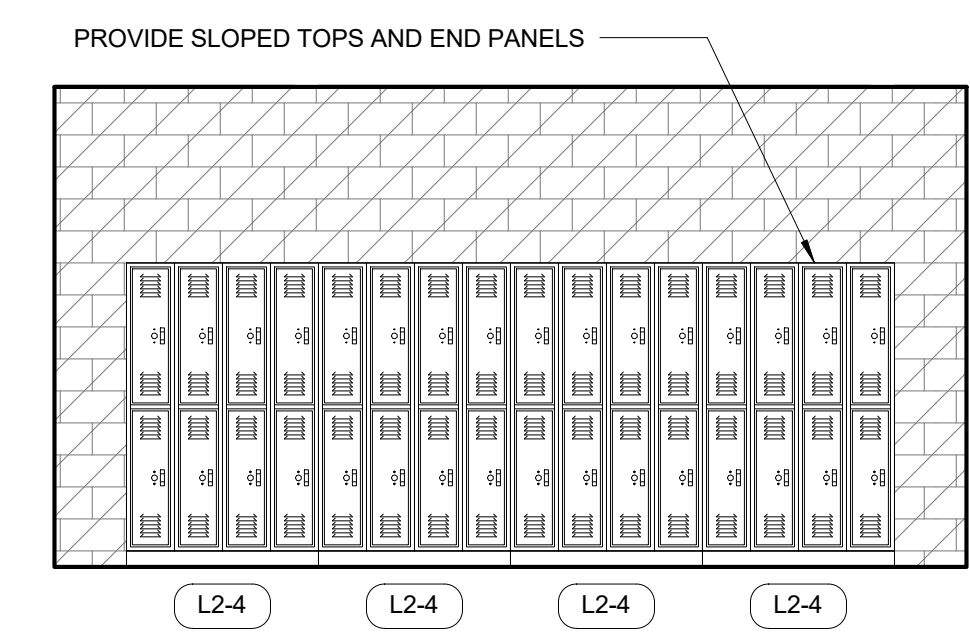
E7 TYP. SCIENCE CLASSROOM @ PARTITION
1/4" = 1'-0" REFERENCED ON A4 / A111B



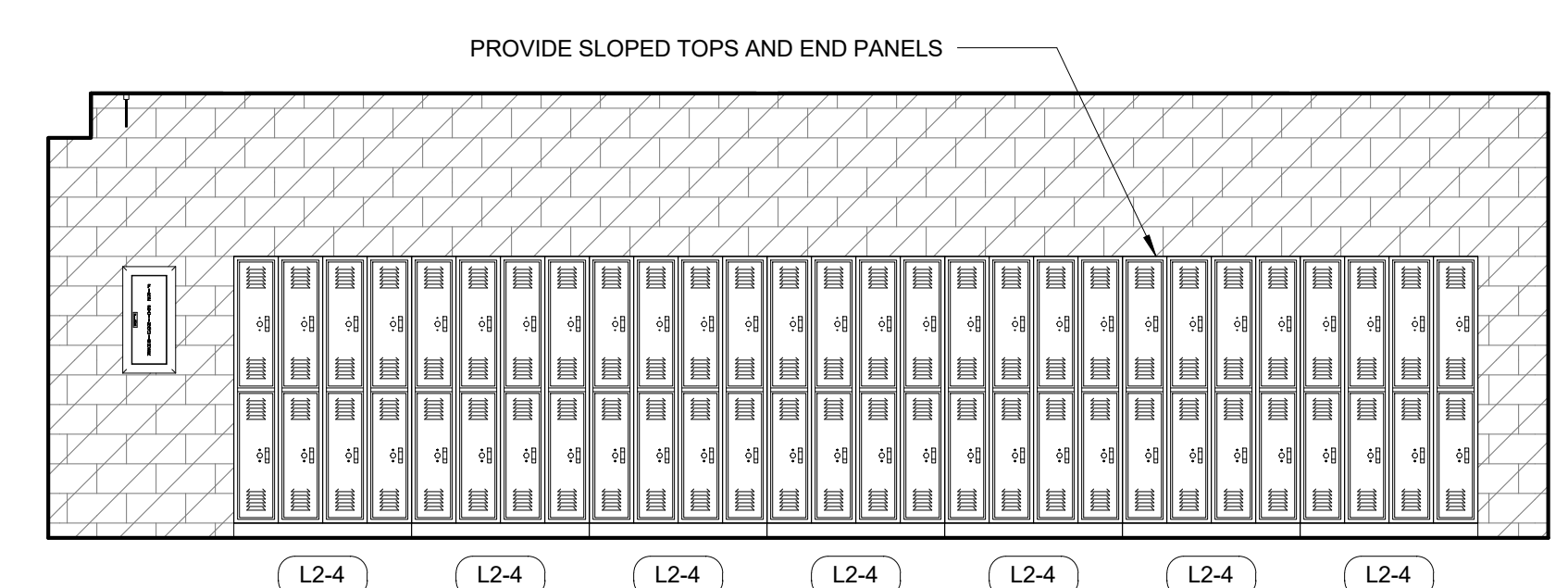
C7 B301 - SOUTH
1/4" = 1'-0" REFERENCED ON A4 / A113B



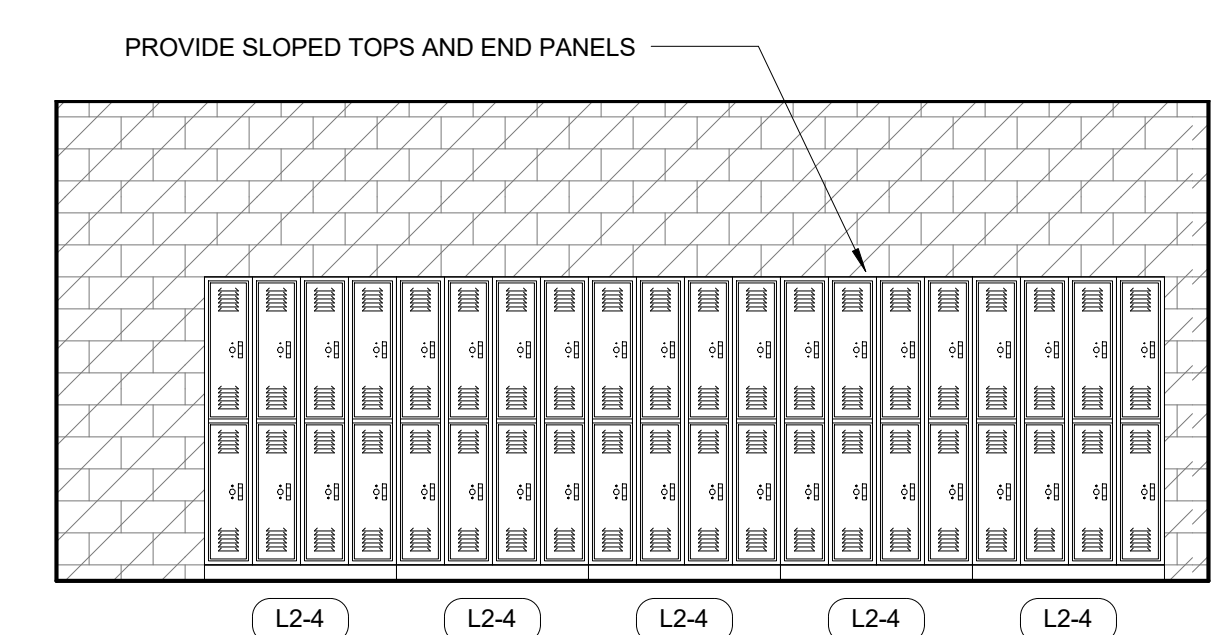
B5 B202 - NORTH
1/4" = 1'-0" REFERENCED ON A4 / A112B



B7 B202 - SOUTH
1/4" = 1'-0" REFERENCED ON A4 / A112B

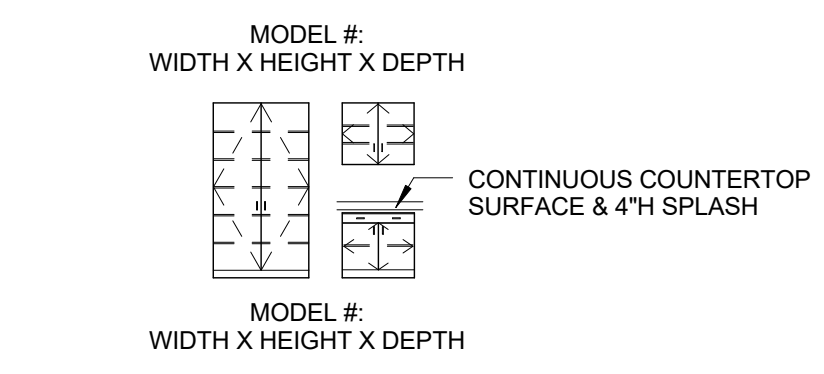


A5 B138 - NORTH
1/4" = 1'-0" REFERENCED ON A4 / A111B



A7 B138 - SOUTH
1/4" = 1'-0" REFERENCED ON A4 / A111B

CASEWORK LEGEND



BASIS OF DESIGN - ALL CASEWORK MODEL NUMBERS DESIGNATED ON INTERIOR ELEVATIONS ARE FROM CASE SYSTEMS 2014 PRODUCT OFFERING CATALOG.
REFER TO MATERIAL LEGEND FOR FINISH REQUIREMENTS.
REFER TO SPECIFICATIONS FOR ADDITIONAL ACCEPTABLE MANUFACTURERS.

ACOUSTIC WALL PANEL KEY

- # 1 - 1" WOOD FIBER ACOUSTIC WALL PANELS ON 3-5/8" MTL STUD AT 16" OC WITH ACOUSTICAL INSULATION (GYM)
- # 2 - 2" THICK FABRIC WRAPPED ACOUSTIC PANEL CLIP MOUNTED
 - 2A. HUNTER (APF-2)
 - 2B. MOSS (APF-3)
 - 2C. SPRUCE (APF-4)
 - 2D. MIST (APF-5)
- # 3 - 2" THICK FABRIC WRAPPED BUILT-UP PANEL CLIP MOUNTED (1/2" PLYWOOD ON 2X WOOD BLOCKING)
 - 3A. HUNTER (APF-2)
 - 3B. MOSS (APF-3)
- # 4 - FABRIC WRAPPED ACOUSTIC DIFFUSER
 - 4A. HUNTER (APF-2)
 - 4B. MOSS (APF-3)
- # 5 - 1" HEXAGON TECTUM ACOUSTIC PANELS (COMMONS)

1/13/2020 9:38:45 AM C:\Users\Public\Documents\Local_Revit_Files\2016_Architecture\JPS_CENTRAL_MS_Scan50cross.rvt