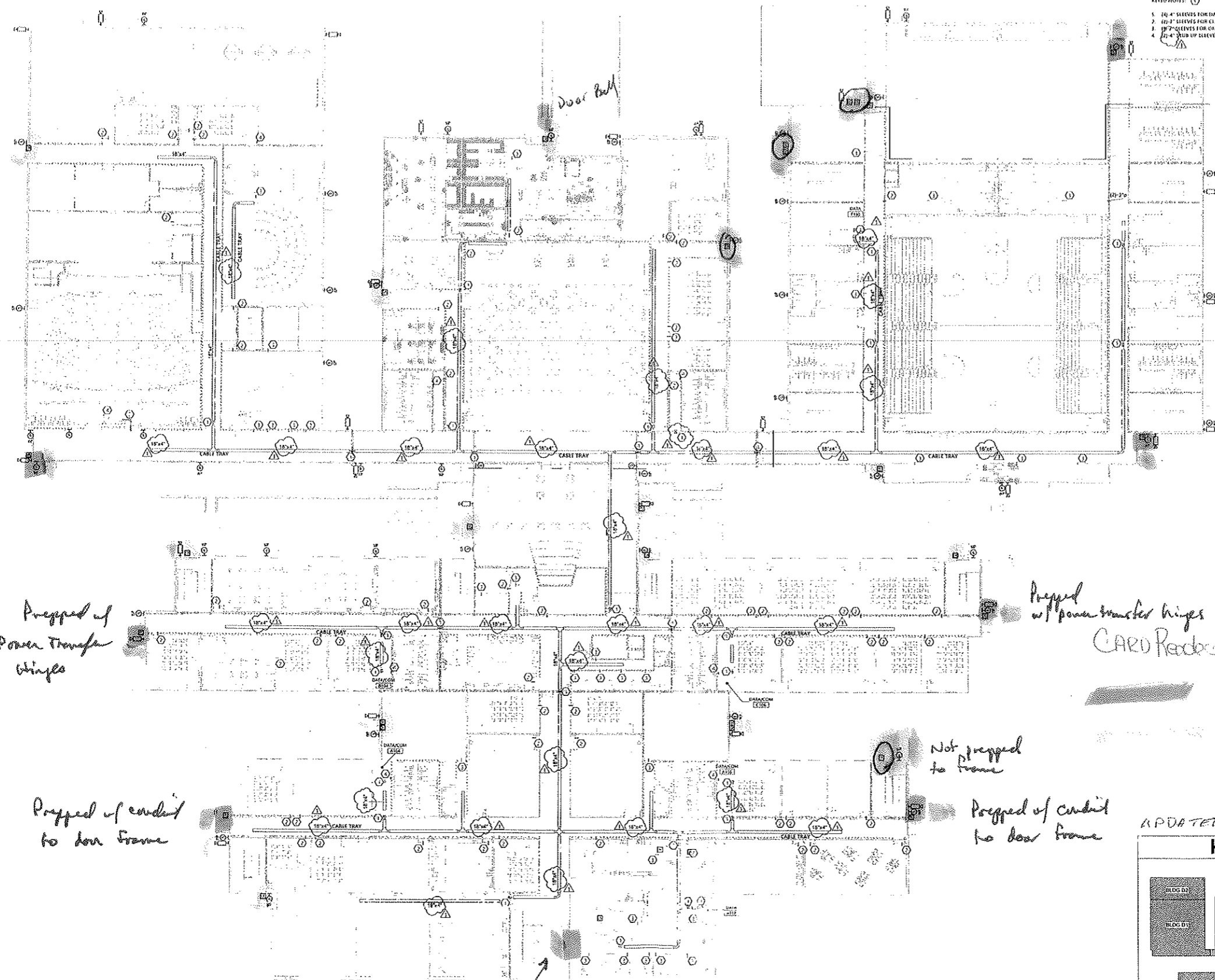


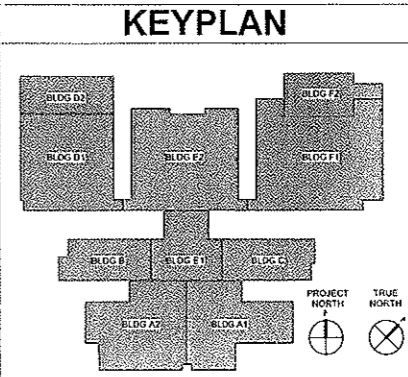
1. ALL EXPOSED CONDUIT SHALL BE BAY AND PARTIED TO MATCH EXISTING OR WORK IN WALL REQUIREMENTS
2. PROVIDE SLEEVES FOR ALL CONDUIT SLEEVES
3. UNLESS SHOWN FOR FREE-HUNG CABLING, NOT LOCATE IN CABLE TRAY OR CONDUIT.

- NOTED NOTES:
1. 1/2" SLEEVES FOR DATA CABLING
 2. 1/2" SLEEVES FOR CLASSROOMS
 3. 1/2" SLEEVES FOR OFFICES
 4. 1/2" SLEEVES TO ROOM ABOVE



1 1ST FLOOR OVERALL SYSTEMS
1/8" = 1'-0"

UPDATED 1-31-2020



PROJECT: 2201-169000
DATE: May 25, 2019
DRAWN BY: MFL
CHECKED BY: MM

FIRST FLOOR PLAN - OVERALL - SPECIAL SYSTEMS

E-300

Optima # 17-0152



701-A LADY STREET
COLUMBIA, SOUTH CAROLINA 29201
TEL: 803.763.2414 FAX: 803.763.5119
WWW.LSP.COM



150 FAYETTEVILLE BLVD. SUITE 200 FAYETTEVILLE, NC 27801
1037 SOUTH BROAD ST. SUITE 300 CHARLOTTE, NC 28203
PHONE: 704.666.4621 • WWW.OPTIMAENGINEERING.COM



52516

MEMBERS OF THE AMERICAN INSTITUTE OF ARCHITECTS

COPYRIGHT 2019 ALL RIGHTS RESERVED
PRINTED OR ELECTRONIC DRAWINGS AND DOCUMENTATION MAY NOT BE REPRODUCED IN ANY FORM WITHOUT WRITTEN PERMISSION FROM LSP ASSOCIATES LTD.

REVISIONS:

No.	Description	Date
1	ADDDENUM #2	06/13/2018