



VILLAGE OF PALMETTO BAY

CONTRACT PLANS

MIAMI-DADE COUNTY (87090)

SW 148TH DR. AND SW 82ND AVE.

INTERSECTION IMPROVEMENTS

COMMISSION:

EUGENE FLINN, MAYOR

JOHN DUBOIS, VICE MAYOR

KARYN CUNNINGHAM, SEAT 1

DAVID SINGER, SEAT 2

LARISSA SIEGEL LARA, SEAT 3

INDEX OF SHEETS

SHEET NO.	DESCRIPTION
1	KEY SHEET
2	SUMMARY OF PAY ITEMS
3	GENERAL NOTES
4	PROJECT LAYOUT
5	ROADWAY DETAILS
6 - 8	ROADWAY PLANS
9	CLEARING PLAN
10 - 12	PAVEMENT MARKING PLANS
13	TEMPORARY TRAFFIC CONTROL NOTES

MAP OF TOPOGRAPHIC SURVEY

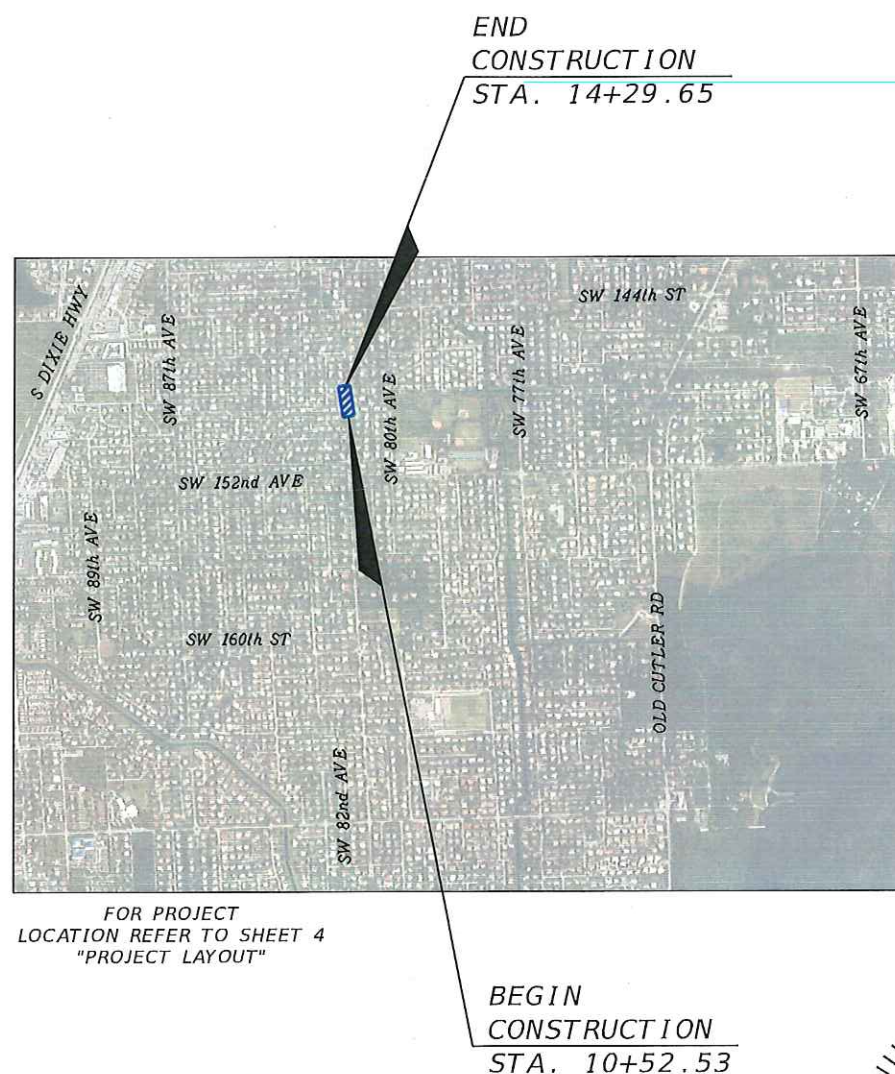
1	VILLAGE OF PALMETTO BAY
---	-------------------------

GOVERNING DESIGN STANDARDS:

Florida Department of Transportation, FY2017-18 Design Standards eBook (DSeB) and applicable Design Standards Revisions (DSRs) at the following website:
<http://www.dot.state.fl.us/rddesign/DesignStandards/Standards.shtm>

GOVERNING STANDARD SPECIFICATIONS:

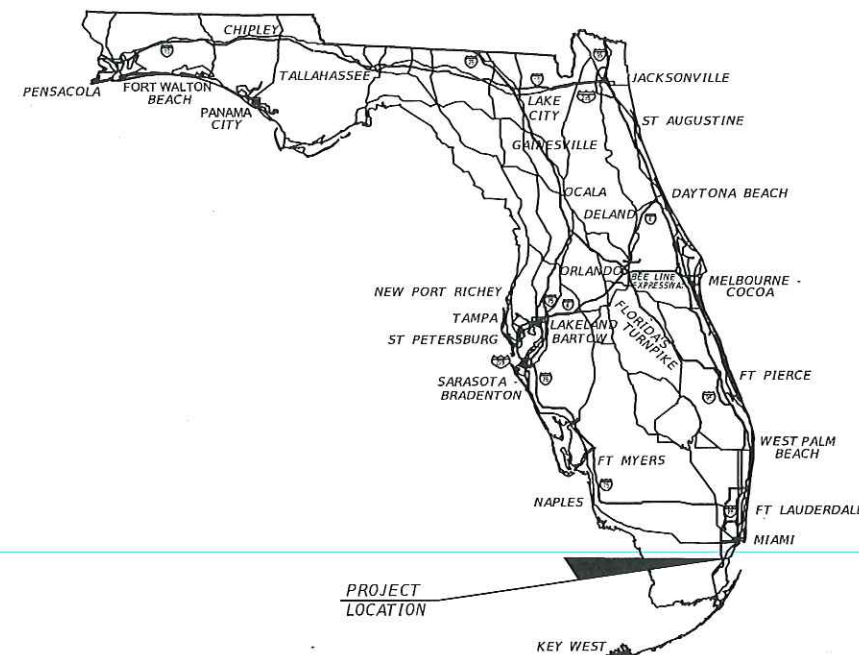
Florida Department of Transportation, July 2017 Standard Specifications for Road and Bridge Construction at the following website:
<http://www.dot.state.fl.us/programmanagement/Implemented/SpecBooks>



APPROVED

DEC 14 2017

TRAFFIC ENGINEERING DIVISION
MIAMI-DADE PUBLIC WORKS & WASTE MGMT



**RESTORATION
PER R21.1
M-DGPWM**

ROADWAY PLANS ENGINEER OF RECORD:

MARLIN SCATTOLINI, P.E. NO.: 80723
 R.J. BEHAR & COMPANY, INC.
 6861 S.W. 196 AVENUE, SUITE 302
 PEMBROKE PINES, FL 33332
 (954) 680-7771
 CONTRACT NO.: C-8001
 VENDOR NO.: F65 095 4070
 CERTIFICATE OF AUTHORIZATION NO.: 00008365

**100% SUBMITTAL
12/08/2017**

NOTE: THE SCALE OF THESE PLANS MAY
HAVE CHANGED DUE TO REPRODUCTION.



FISCAL YEAR	SHEET NO.
17	1

SUMMARY OF PAY ITEMS			
FDOT PAY ITEM NO.	DESCRIPTION	UNIT	QUANTITY
101-1	MOBILIZATION	LS	1
102-1	MAINTENANCE OF TRAFFIC	LS	1
110-1-1	CLEARING AND GRUBBING	LS / AC	1 / 0.18
110-4-10	REMOVAL OF EXISTING CONCRETE	SY	83
120-1	REGULAR EXCAVATION	CY	171
160-4	TYPE B STABILIZATION	SY	702
285-701	OPTIONAL BASE, BASE GROUP 01	SY	274
285-706	OPTIONAL BASE, BASE GROUP 06	SY	428
327-70-1	MILLING EXIST. ASPH. PAVT. 1" AVG. DEPTH	SY	1181
334-1-13	SUPERPAVE ASPHALTIC CONC. TRAFFIC C	TN	109.4
425-2-43	MANHOLES, P-7, PARTIAL	EA	1
425-1-521	INLETS, DT BOT, TYPE C,<10'	EA	1
430-175-115	PIPE CULVERT,OPTIONAL MATERIAL,ROUND, 15"S/CD	LF	7
520-2-4	CONCRETE CURB, TYPE D	LF	124
522-1	CONCRETE SIDEWALK AND DRIVEWAYS. 4" THICK	SY	75
522-2	CONCRETE SIDEWALK AND DRIVEWAYS. 6" THICK	SY	84
527-2	DETECTABLE WARNINGS	SF	122
570-1-2	PERFORMANCE TURF - SOD	SY	273
580-B	TREE REMOVAL	EA	7
700-1-11	SINGLE POST SIGN, F&I GROUND MOUNT, UP TO 12 SF	AS	5
700-1-50	SINGLE POST SIGN, RELOCATE	AS	5
700-1-60	SINGLE POST SIGN, REMOVE	AS	3
706-3	REFLECTIVE PAVEMENT MARKERS (Y/Y)	EA	139
711-11-123	THERMOPLASTIC, STANDARD, WHITE, SOLID, 12" FOR CROSSWALK AND ROUNDABOUT	LF	245
711-11-124	THERMOPLASTIC, STANDARD, WHITE, SOLID, 18" FOR DIAGONAL OR CHEVRON	LF	58
711-11-125	THERMOPLASTIC, STANDARD, WHITE, SOLID, 24" FOR STOP LINE AND CROSSWALK	LF	82
711-11-224	THERMOPLASTIC, STANDARD, YELLOW, SOLID, 18" FOR DIAGONAL OR CHEVRON	LF	146
711-15-101	THERMOPLASTIC, STANDARD-OPEN GRADED ASPHALT SURFACES WHITE, SOLID, 6"	GM	0.170
711-15-201	THERMOPLASTIC, STANDARD-OPEN GRADED ASPHALT SURFACES, YELLOW, SOLID, 6"	GM	0.338



PAY ITEM NOTES

- 102-1 INCLUDES REMOVAL AND DISPOSAL OF EXISTING CONFLICTING MARKINGS AND RESTORATION OF EXISTING PAVEMENT.
- 580-B NOT AN FDOT PAY ITEM.

REVISIONS				R.J. Behar & Company, Inc. Engineers • Planners 6861 S.W. 196 AVENUE, SUITE 302 PEMBROKE PINES, FL 33332 MARLIN SCATTOLINI, P.E. LICENSE NO. 80723 CERTIFICATE OF AUTHORIZATION NO. 00008365	VILLAGE OF PALMETTO BAY	SUMMARY OF PAY ITEMS	SHEET NO.
DATE	DESCRIPTION	DATE	DESCRIPTION				2

GENERAL:

- 1. BENCHMARK ELEVATIONS SHOWN ON THE PLANS ARE NGVD 29.
- 2. THE CONTRACTOR SHALL SUBMIT MOT PLAN TO MIAMI-DADE COUNTY DEPARTMENT OF TRANSPORTATION AND PUBLIC WORKS CONSTRUCTION DIVISION PRIOR TO COMMENCING WORK.
- 3. THE DESIGN SPEED AND POSTED SPEED FOR THIS PROJECT ARE BOTH 30 M.P.H.
- 4. ALL IMPROVEMENTS ARE TO BE CONSTRUCTED AND/OR INSTALLED WITHIN THE EXISTING STATE AND/OR LOCAL RIGHT OF WAY

UTILITIES:

- 1. TO REQUEST LIGHTING CONDUIT LOCATIONS, NOTIFY THE ENGINEER AND CALL THE FDOT MAINTENANCE DEPARTMENT TWO (2) FULL BUSINESS DAYS PRIOR TO DIGGING.

FOR MONROE COUNTY AND THE 18 MILE STRETCH CONTACT PATTY IVEY AT (305) 289-6106.
FOR LIMITED ACCESS ROADWAYS IN MIAMI-DADE COUNTY CONTACT LEONARD SALAZAR AT (305) 470-5498.
FOR ALL OTHER ROADWAYS IN MIAMI-DADE COUNTY CONTACT MIKE HUGHES AT (305) 640-7160.

2. UTILITY OWNER:

COMPANY	CONTACT	TELEPHONE
COMCAST CABLE	LEONARD MAXWELL	(954) 447-8405
FLORIDA CITY GAS	OSCAR RODRIGUEZ	(305) 835-3650
DADE COUNTY PUBLIC WORKS & TRAFFIC	OCTAVIO VIDAL	(305) 412-0891 EXT: 201
FLORIDA POWER & LIGHT	MARIO ESCALONA	(305) 219-9143
MIAMI DADE WATER SEWER	SERGIO GARCIA	(786) 268-5320
AT&T DISTRIBUTION	STEVE LOW	(305) 222-8745
FPL FIBERNET LLC	DANNY HASKETT	(305) 552-2931
MIAMI DADE ENTERPISE TECHNOLOGY SERVICE	CARLOS PERTUZ	(305) 275-7813
MIAMI-DADE TRAFFIC ENGINEERING DIVISION	DAVID W HAYS	(305) 375-1019

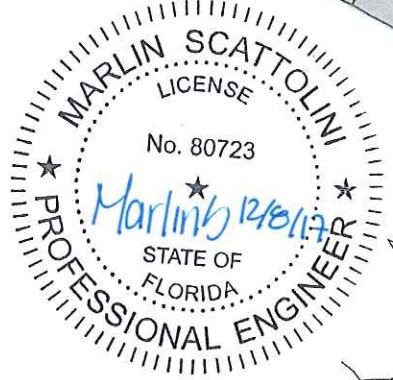
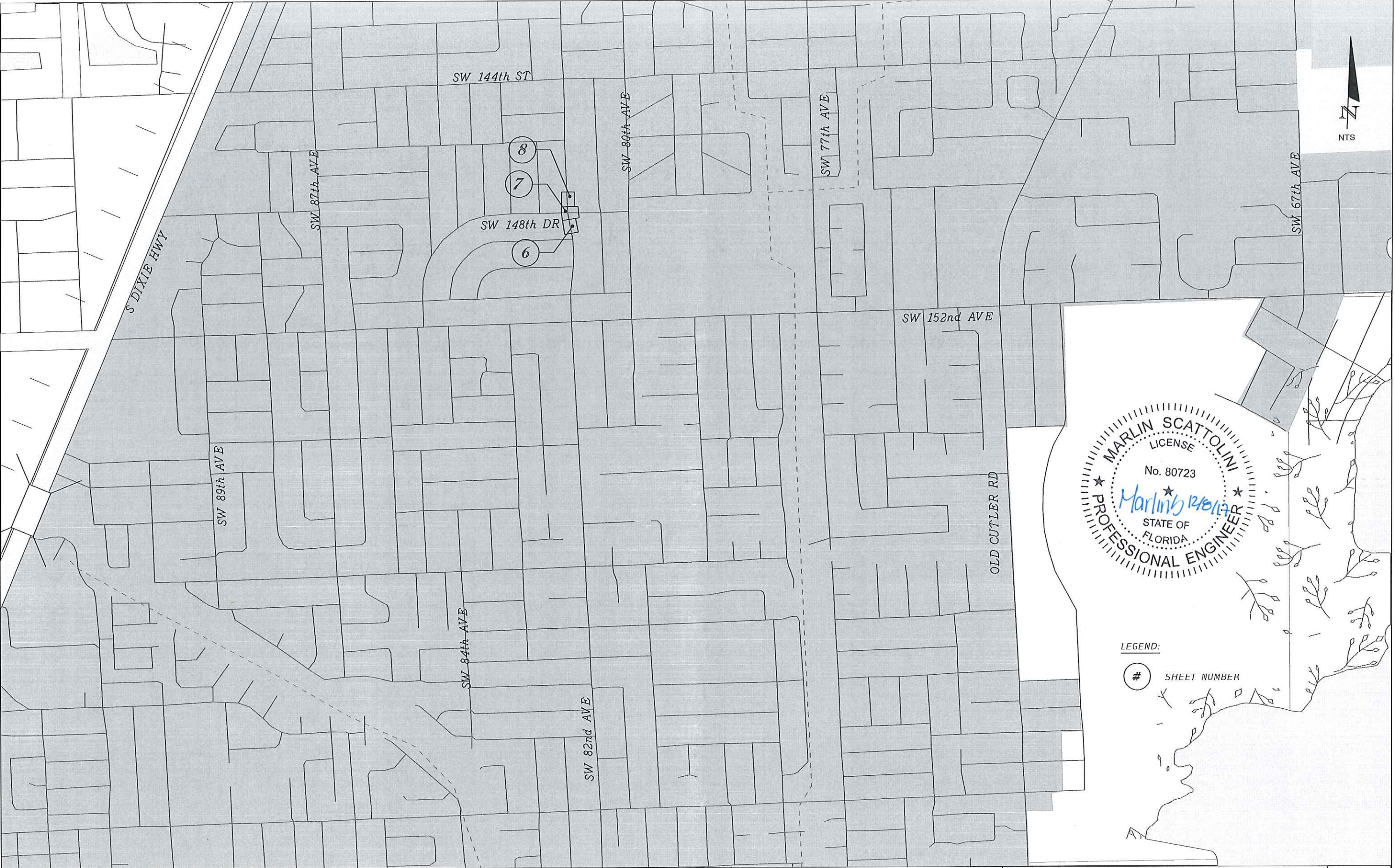
ENVIRONMENTAL NOTES

- 1. THE CONTRACTOR SHALL REVIEW ENVIRONMENTAL REQUIREMENTS OF ANY PROPOSED STAGING AREAS WITH THE VILLAGE OF PALMETTO BAY AT LEAST SEVENTY-TWO (72) HOURS PRIOR TO USE.
- 2. NO STAGING OR OTHER ACTIVITIES FOR THIS PROJECT WILL BE ALLOWED WITHIN CORAL REEF PARK OR THE CHARLES DEERING ESTATE.

MIAMI-DADE TRANSIT:

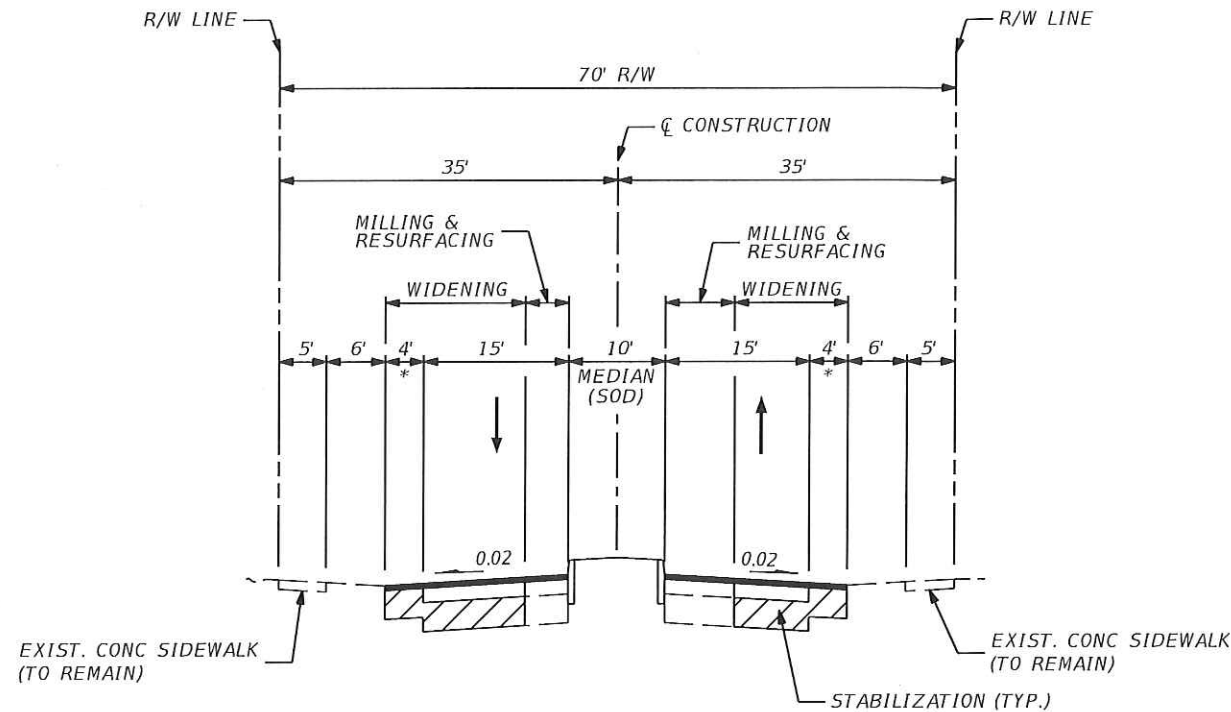
- 1. THE CONTACT PERSON FOR THE MIAMI-DADE DEPARTMENT OF TRANSPORTATION & PUBLIC WORKS (DTPW), OFFICE OF SAFETY & SECURITY, IS EDUARDO ABARCA. HIS PHONE NUMBER IS (305) 375-2925.
- 2. THE EMERGENCY NUMBER FOR THE DTPW BUS TRAFFIC CONTROL CENTER IS: (305) 375-2925.





LEGEND:
SHEET NUMBER

REVISIONS				R.J. Behar & Company, Inc. Engineers • Planners 6861 S.W. 196 AVENUE, SUITE 302 PEMBROKE PINES, FL 33332 MARLIN SCATTOLINI, P.E. LICENSE NO. 80723 CERTIFICATE OF AUTHORIZATION NO. 00008365	VILLAGE OF PALMETTO BAY	PROJECT LAYOUT		SHEET NO. 4
DATE	DESCRIPTION	DATE	DESCRIPTION					



TYPICAL SECTION
N.T.S.

* 4' WIDE PAVED SHOULDER

SW 184th Dr. and SW 82nd Ave.

PAVEMENT DESIGN

MILLING

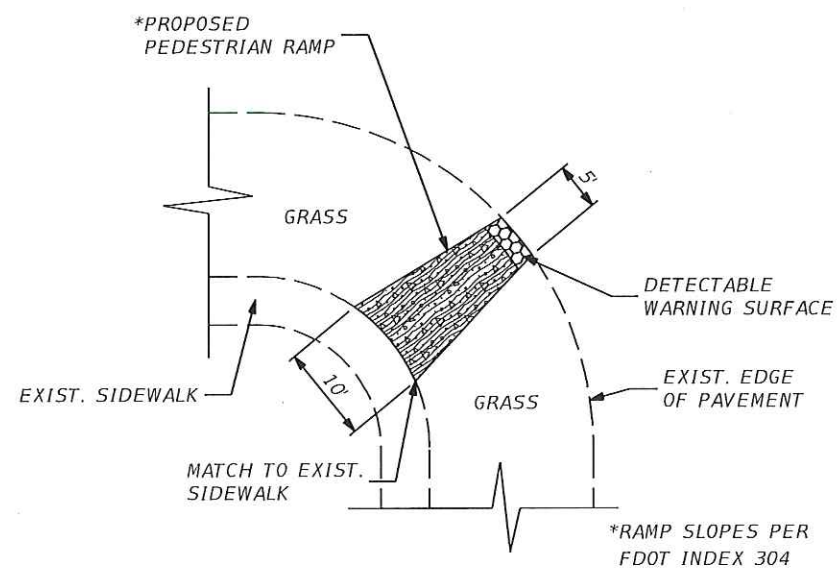
MILL EXISTING ASPHALT PAVEMENT (1" THICK)

RESURFACING

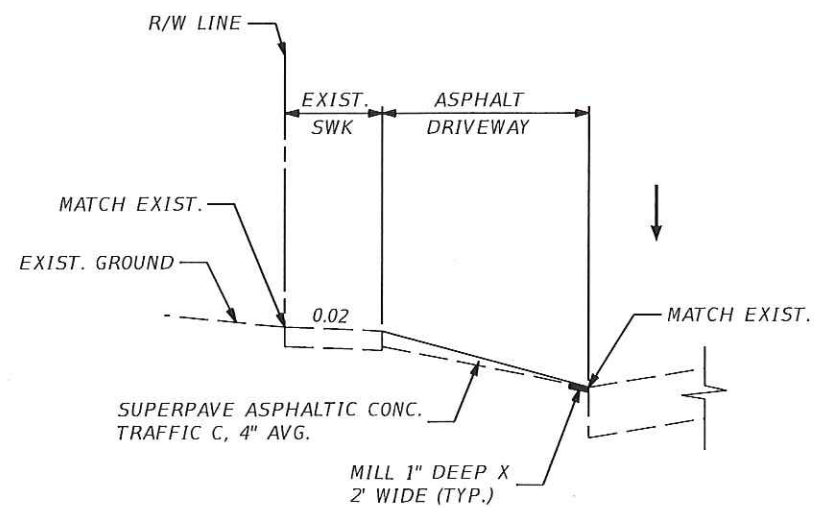
FRICTION COURSE FC-9.5
(TRAFFIC LEVEL C) (1" THICK)

WIDENING

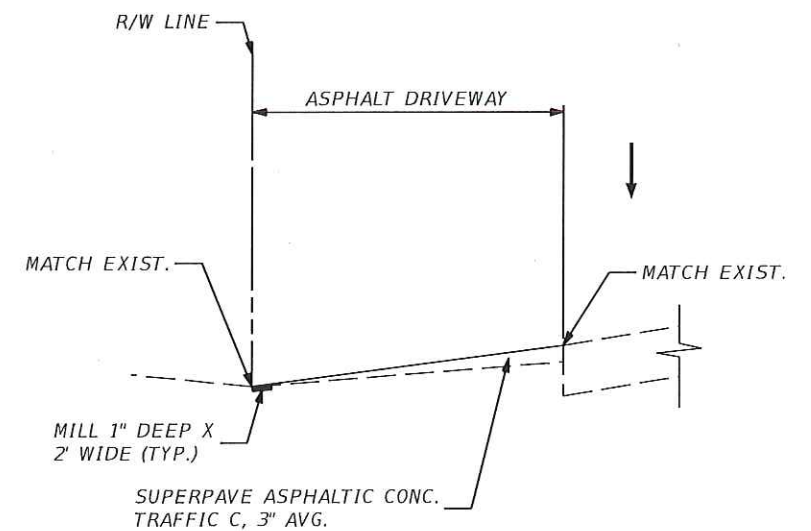
TYPE B STABILIZATION, LBR 40 (12" THICK)
OPTIONAL BASE GROUP 6 WITH
TYPE SP STRUCTURAL COURSE (TRAFFIC LEVEL C) (1" THICK)
FRICTION COURSE FC-9.5



PEDESTRIAN RAMP
N.T.S.



DRIVEWAY A DETAIL
N.T.S.



DRIVEWAY B DETAIL
N.T.S.

REVISIONS			
DATE	DESCRIPTION	DATE	DESCRIPTION

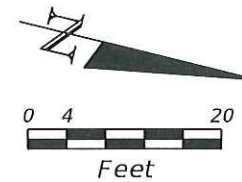
R.J. Behar & Company, Inc.
Engineers • Planners
6861 S.W. 196 AVENUE, SUITE 302
PEMBROKE PINES, FL. 33332
MARLIN SCATTOLINI, P.E. LICENSE NO. 80723
CERTIFICATE OF AUTHORIZATION NO. 00008365

VILLAGE OF
PALMETTO BAY

ROADWAY DETAILS

SHEET
NO.

5



BEGIN CONSTRUCTION
STA. 10+52.53
SAWCUT - MATCH EXIST.

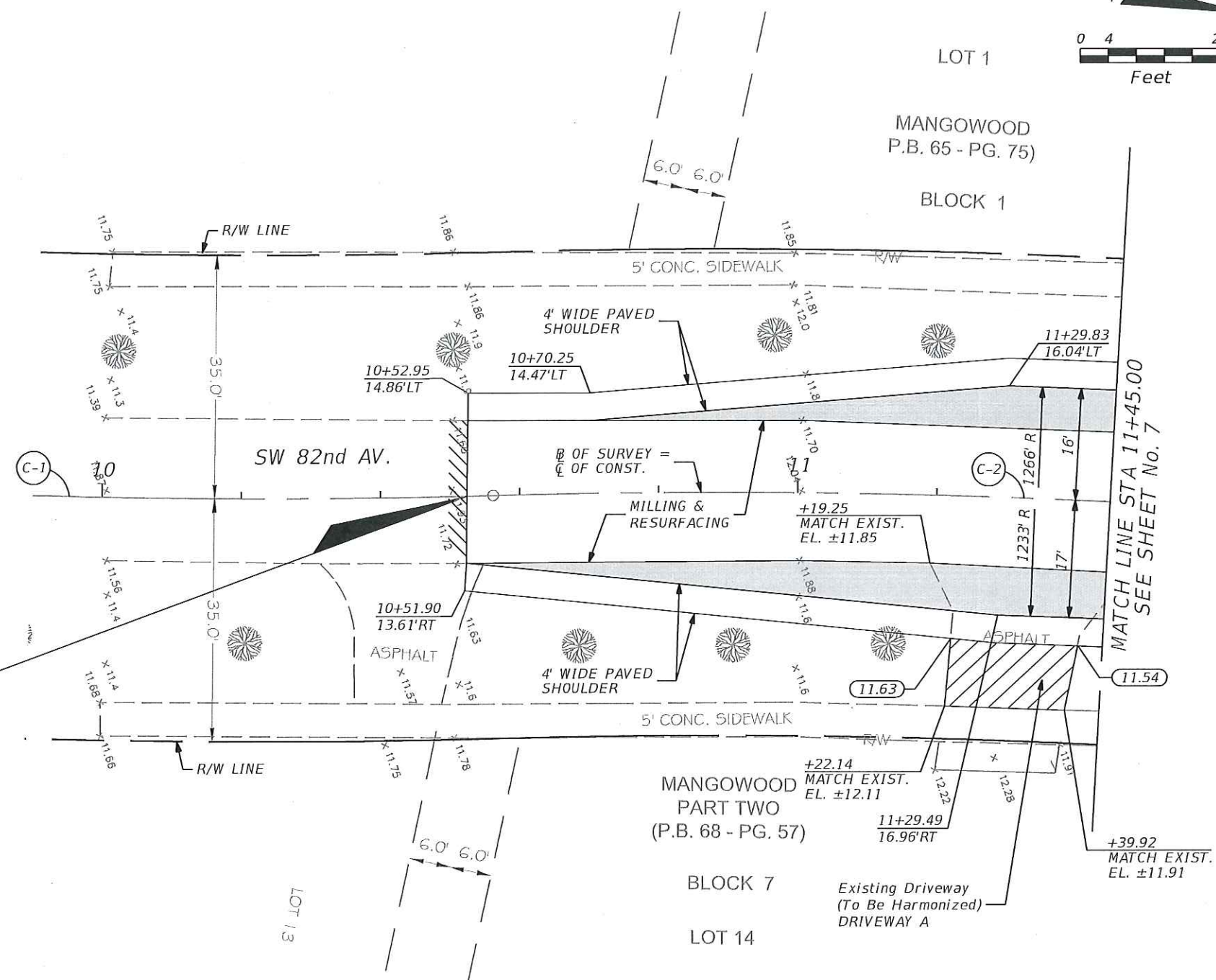


CURVE DATA C-1
PI STA. = 10+28.12
Δ = 2° 48' 48" (LT)
D = 5° 00' 14"
T = 28.12
L = 56.22
R = 1,145.00
PC STA. = 10+00.00
PT STA. = 10+56.22

CURVE DATA C-2
PI STA. = 11+32.47
Δ = 7° 37' 11" (RT)
D = 5° 00' 14"
T = 76.25
L = 152.27
R = 1,145.00
PC STA. = 10+56.22
PT STA. = 12+08.49

LEGEND:

- WIDENING
- ASPHALT DRIVEWAY (SEE DRIVEWAY DETAIL)
- PROPOSED ELEVATION



REVISIONS				R.J. Behar & Company, Inc. Engineers • Planners 6861 S.W. 196 AVENUE, SUITE 302 PEMBROKE PINES, FL 33332 MARLIN SCATTOLINI, P.E. LICENSE NO. 80723 CERTIFICATE OF AUTHORIZATION NO. 00008365	VILLAGE OF PALMETTO BAY	ROADWAY PLAN	SHEET NO.
DATE	DESCRIPTION	DATE	DESCRIPTION				6

(#01) CATCH BASIN
RIM ELEV.: 11.62
SOUTHEAST INV.: 6.44
18" H.P.E.D. PIPE
BOTTOM ELEV.: 3.42

(#02) CATCH BASIN
RIM ELEV.: 11.43
NORTHWEST INV.: 6.33
18" H.P.E.D. PIPE
SOUTHWEST INV.: 6.43
18" H.P.E.D. PIPE
BOTTOM ELEV.: 5.03

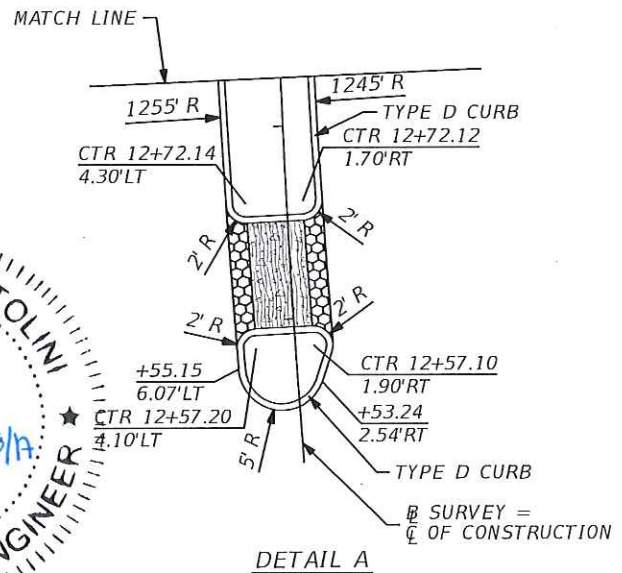
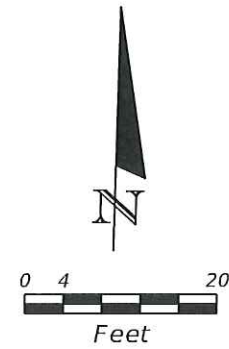
(#03) STORM MANHOLE
RIM ELEV.: 12.07
NORTHEAST INV.: 6.27
18" H.P.E.D. PIPE
SOUTHWEST INV.: 6.43
18" IRON PIPE
BOTTOM ELEV.: 3.57

(#04) CATCH BASIN
RIM ELEV.: 11.34
NORTHEAST INV.: 4.89
18" H.P.E.D. PIPE
BOTTOM ELEV.: 3.34

(S-1)
STA. 12+40.04 (16.38' RT)
REPLACE EXISTING
STRUCTURE TOP WITH
MH TOP FDOT INDEX NO. 200, 201
CORE DRILL EXIST. STRUCTURE
TO CONNECT PROPOSED PIPE
15" PIPE FL. EL. 6.91 (NE)

(S-2)
STA. 12+39.66 (25.87' RT)
CONST. DITCH BOTTOM INLET
TYPE "C" FDOT INDEX NO. 200, 232
RIM EL. = 11.51'
FL. EL. = 6.97 (SW)
BOTTOM EL. = 4.97

TEMPORARY SITE BENCHMARK #1
T.B.M. #1
SET MAG NAIL & DISC
(L.B. 7335)
ELEV.: 12.09
N: 472,722.65
E: 878,362.43



CURVE DATA C-4
PI STA. = 12+75.49
Δ = 4° 49' 36" (RT)
D = 5° 00' 14"
T = 48.26
L = 96.46
R = 1,145.00
PC STA. = 12+27.23
PT STA. = 13+23.69

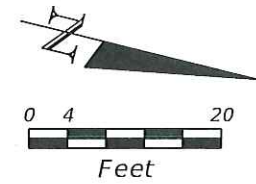
CURVE DATA C-3
PI STA. = 12+17.86
Δ = 0° 56' 16" (RT)
D = 5° 00' 14"
T = 9.37
L = 18.74
R = 1,145.00
PC STA. = 12+08.49
PT STA. = 12+27.23

CURVE DATA C-2
PI STA. = 11+32.47
Δ = 7° 37' 11" (RT)
D = 5° 00' 14"
T = 76.25
L = 152.27
R = 1,145.00
PC STA. = 10+56.22
PT STA. = 12+08.49

LEGEND:
4" THICK CONC. SIDEWALK
PER FDOT INDEX 310
6" THICK CONC. SIDEWALK
DETECTABLE WARNING SURFACE
PER FDOT INDEX 310
SOD - REGRADE SWALE 1:4 MAX.
WIDENING
TREE NUMBER
(SEE CLEARING PLAN)
1.23 PROPOSED ELEVATION

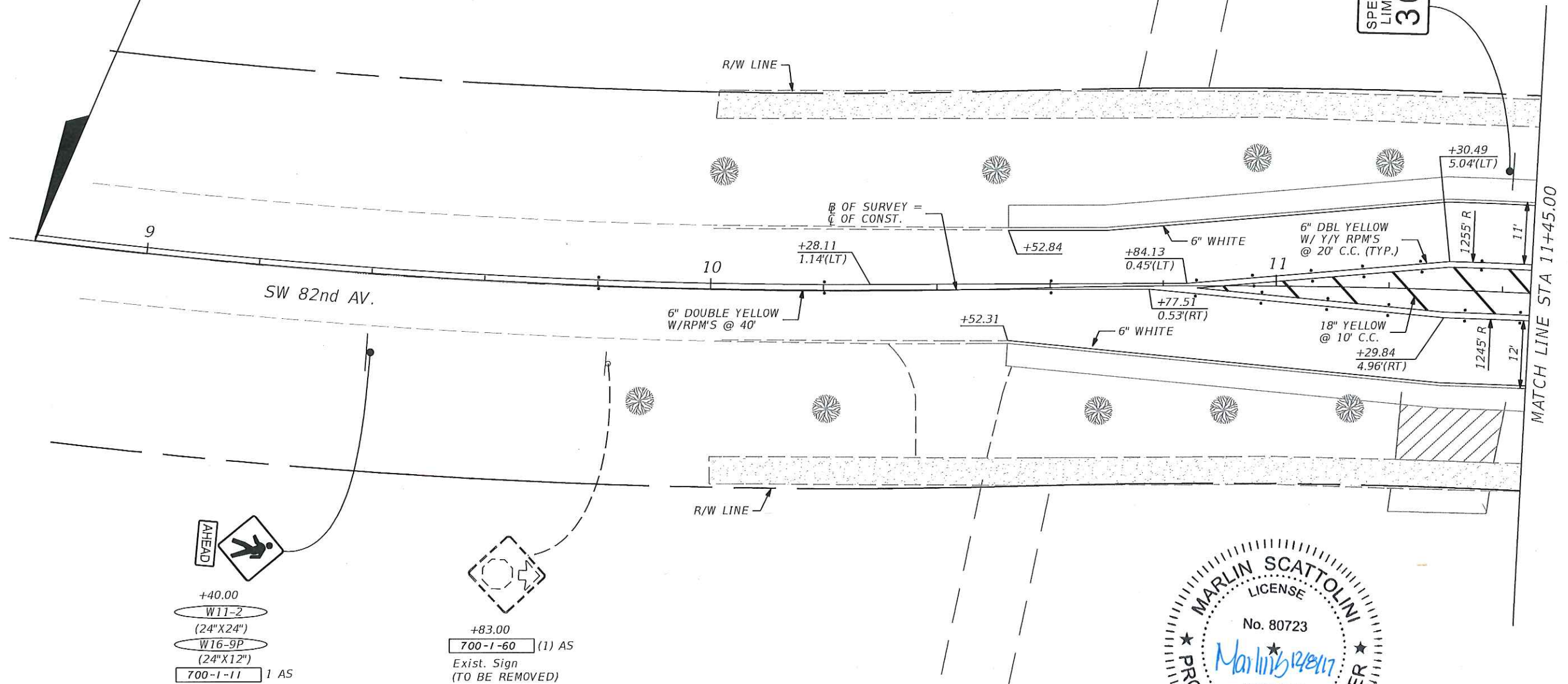


REVISIONS				R.J. Behar & Company, Inc. Engineers • Planners 6861 S.W. 196 AVENUE, SUITE 302 PEMBROKE PINES, FL 33332 MARLIN SCATTOLINI, P.E. LICENSE NO. 80723 CERTIFICATE OF AUTHORIZATION NO. 00008365	VILLAGE OF PALMETTO BAY	ROADWAY PLAN	SHEET NO. 7
DATE	DESCRIPTION	DATE	DESCRIPTION				



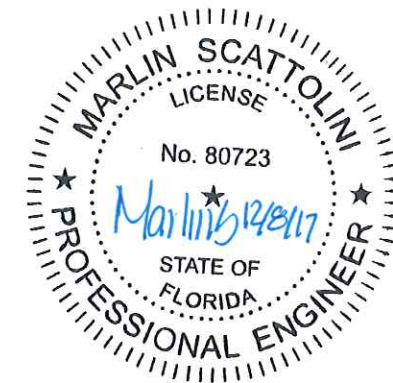
BEGIN
PAVEMENT MARKINGS
STA. 8+80.00

+40.00
Exist. Sign
(TO BE RELOCATED)
700-1-50
SPEED LIMIT 30



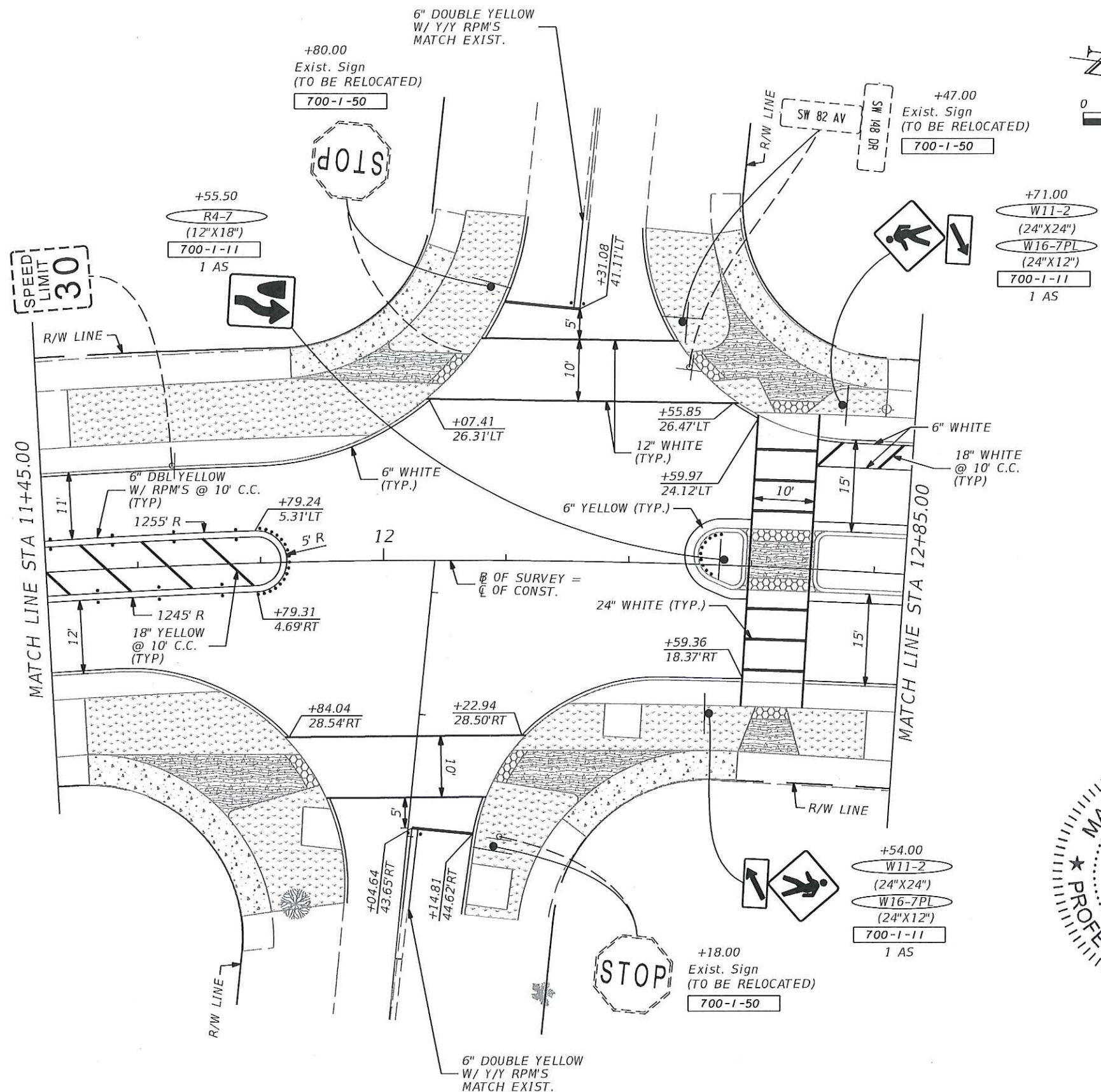
+40.00
W11-2
(24"X24")
W16-9P
(24"X12")
700-1-11 1 AS

+83.00
700-1-60 (1) AS
Exist. Sign
(TO BE REMOVED)



REVISIONS				R.J. Behar & Company, Inc. Engineers • Planners 6861 S.W. 196 AVENUE, SUITE 302 PEMBROKE PINES, FL 33332 MARLIN SCATTOLINI, P.E. LICENSE NO. 80723 CERTIFICATE OF AUTHORIZATION NO. 00008365	VILLAGE OF PALMETTO BAY	PAVEMENT MARKING PLAN	SHEET NO. 10
DATE	DESCRIPTION	DATE	DESCRIPTION				

Exist. Sign (TO BE RELOCATED)
SEE PREVIOUS SHEET FOR NEW
LOCATION

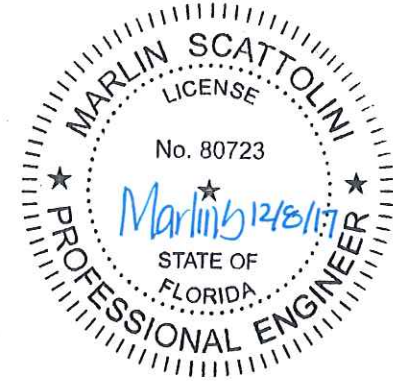
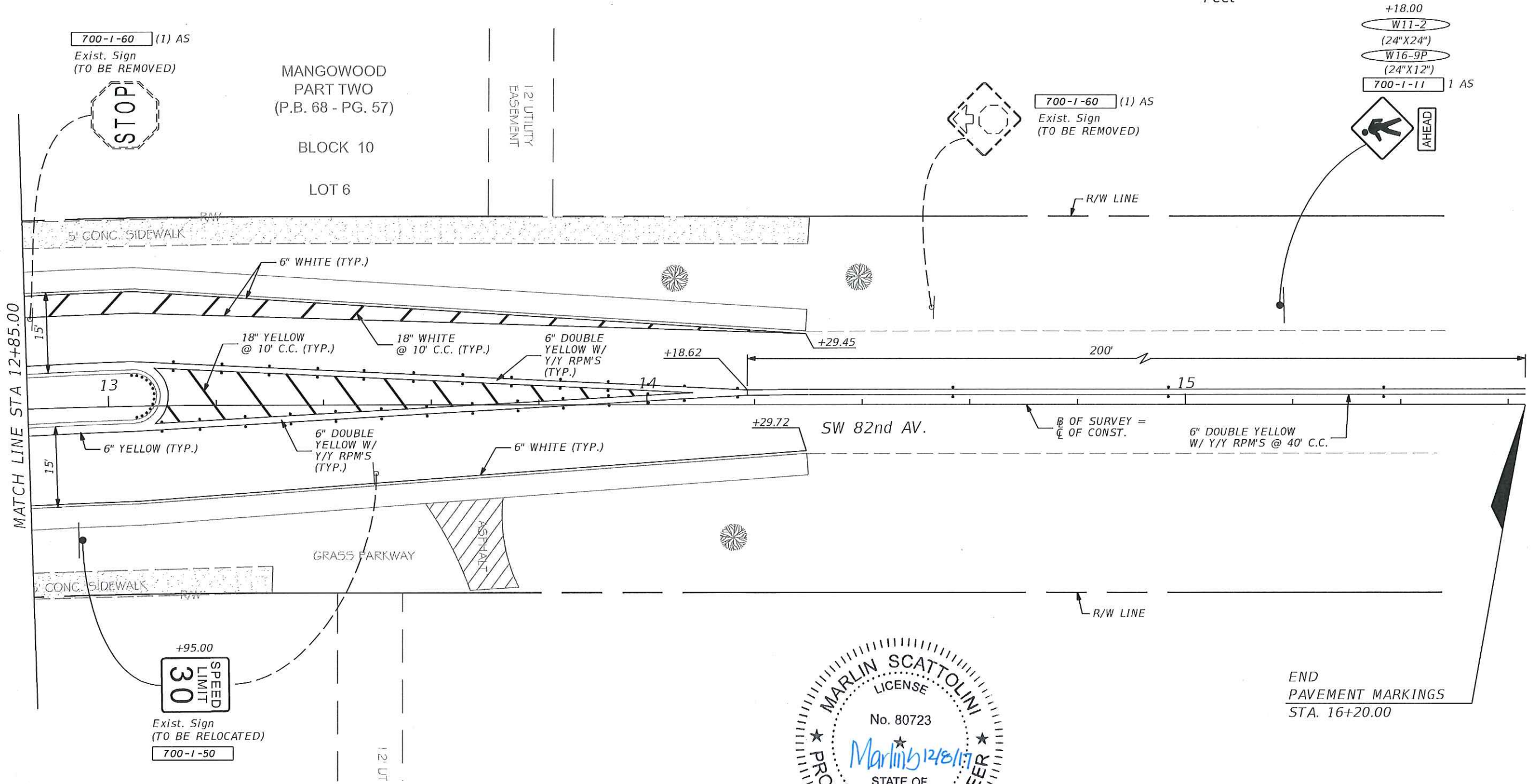
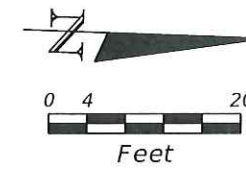


REVISIONS				DATE	DESCRIPTION	DATE	DESCRIPTION	SHEET NO.
DATE	DESCRIPTION	DATE	DESCRIPTION					
								11

R.J. Behar & Company, Inc.
Engineers • Planners
6861 S.W. 196 AVENUE, SUITE 302
PEMBROKE PINES, FL 33332
MARLIN SCATTOLINI, P.E. LICENSE NO. 80723
CERTIFICATE OF AUTHORIZATION NO. 00008365

**VILLAGE OF
PALMETTO BAY**

PAVEMENT MARKING PLAN



REVISIONS				DATE	DESCRIPTION	DATE	DESCRIPTION	SHEET NO.
DATE	DESCRIPTION	DATE	DESCRIPTION					
								12

R.J. Behar & Company, Inc.
 Engineers • Planners
 6861 S.W. 196 AVENUE, SUITE 302
 PEMBROKE PINES, FL 33332
 MARLIN SCATTOLINI, P.E. LICENSE NO. 80723
 CERTIFICATE OF AUTHORIZATION NO. 00008365

**VILLAGE OF
PALMETTO BAY**

PAVEMENT MARKING PLAN

TRAFFIC CONTROL PLAN NOTES

- 1. THE TRAFFIC CONTROLS SHALL BE IN ACCORDANCE WITH THE PROJECT PLANS, THE CURRENT EDITION OF FLORIDA D.O.T. DESIGN STANDARD INDEXES (600 SERIES) AND THE 2009 MANUAL ON UNIFORM TRAFFIC CONTROL DEVICES (MUTCD) AS MINIMUM CRITERIA. PROJECT AREAS THAT ARE NOT ACTIVE CONSTRUCTION AREAS ARE TO BE KEPT FREE OF CONSTRUCTION DEBRIS AND ANY UNNECESSARY TRAFFIC CONTROL DEVICES.
- 2. PEDESTRIAN WALKWAYS, BUS STOPS AND PEDESTRIAN ACCESS TO TRANSIT VEHICLES SHOULD BE MAINTAINED FREE OF ANY OBSTRUCTIONS AND HAZARDS SUCH AS HOLES, DEBRIS, MUD, CONSTRUCTION EQUIPMENT, STORED MATERIALS, ETC. ANY HAZARDS NEAR OF ADJACENT TO WALKWAYS, BUS STOPS AND ACCESS TO TRANSIT VEHICLES SHOULD BE CLEARLY DELINEATED. USED INDEX 660 FOR PEDESTRIAN CONTROL FOR CLOSURE OF SIDEWALKS.
- 3. THE CONTRACTOR IS RESPONSIBLE FOR PROVIDING A WALKING SURFACE IN ACCORDANCE WITH THE APPLICABLE SECTION OF THE AMERICANS WITH DISABILITIES ACT (ADA) FOR PEDESTRIANS. WALK ROUTES FOR ALL PEDESTRIANS, TRANSIT USERS AND SCHOOL STUDENTS WITHIN THE VICINITY OF THE CONSTRUCTION ZONE BE MAINTAINED THROUGHOUT CONSTRUCTION.
- 4. LANE CLOSURE SHALL OCCUR ONLY DURING NON-PEAK HOURS ON NON-EVENT DAYS/NIGHTS/WEEKENDS. NON-PEAK HOURS ARE:

9:00 AM to 3:30 PM - WEEKDAYS AND WEEKENDS
10:00 AM to 3:00 PM - WEEKENDS
NO NIGHT WORK PERMITTED.
- 5. NOTIFICATION OF LANE CLOSURES OR TEMPORARY DETOURS SHALL BE ACCOMPLISHED 14 WORKING DAYS PRIOR TO CLOSURE, DETOUR OR MOT PHASE CHANGE BY SUBMITTING THE REQUIRED ELECTRONIC LANE CLOSURE FORM (WWW.FDOTLCIS.COM), SKETCHES, CALCULATIONS, AND OTHER DATA THROUGH THE ENGINEER TO THE DISTRICT TRAFFIC OPERATIONS OFFICE.
- 6. REGULATORY SPEED ESTABLISHED WITHIN WORK ZONE TRAVEL WAYS SHALL BE 30 M.P.H.
- 7. LANE CLOSURES SHALL NOT BE PERMITTED DURING SCHOOL SPEED ZONE HOURS WHERE SUCH CLOSURES WILL AFFECT TRAFFIC FLOW IN THE VICINITY OF THE SCHOOL SPEED ZONES.



REVISIONS				R.J. Behar & Company, Inc. Engineers • Planners 6861 S.W. 196 AVENUE, SUITE 302 PEMBROKE PINES, FL 33332 MARLIN SCATTOLINI, P.E. LICENSE NO. 80723 CERTIFICATE OF AUTHORIZATION NO. 00008365	VILLAGE OF PALMETTO BAY	TEMPORARY TRAFFIC CONTROL NOTES	SHEET NO.
DATE	DESCRIPTION	DATE	DESCRIPTION				13