



ENGINEER
DEPARTMENT OF
ENVIRONMENTAL SERVICES

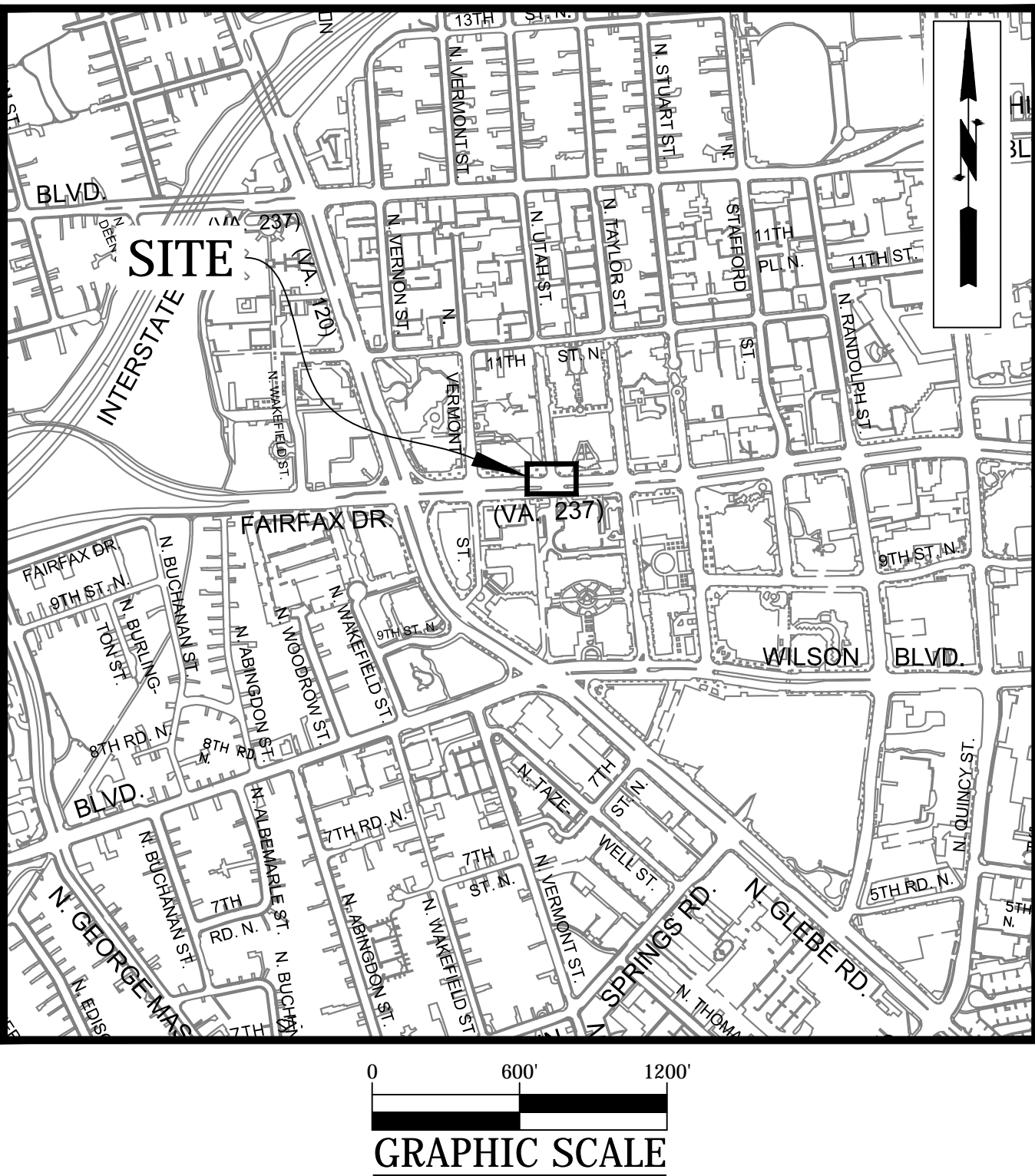
FACILITIES & ENGINEERING DIVISION
ENGINEERING BUREAU
2100 CLARENDON BOULEVARD, SUITE 813
ARLINGTON, VA 22201
PHONE: 703.228.3629 FAX: 703.228.3606
WWW.ARLINGTONVA.US

OWNER
DEPARTMENT OF
ENVIRONMENTAL SERVICES

DIVISION OF TRANSPORTATION & DEVELOPMENT
TRANSPORTATION PLANNING
2100 CLARENDON BOULEVARD, SUITE 900,
ARLINGTON, VA 22201
PHONE: 703.228.3681 FAX: 703.228.7584
WWW.ARLINGTONVA.US

CONTRACTOR
TO BE DETERMINED

LOCATION MAP



CONSTRUCTION DRAWINGS FOR: FAIRFAX DR. & N. UTAH ST. NE CORNER AT INTERSECTION

PROJECT CODE: P14D

GENERAL NOTES:

GENERAL CONSTRUCTION NOTES

1. ALL CONSTRUCTION WORK FOR THIS PROJECT SHALL CONFORM TO THE ARLINGTON COUNTY DEPARTMENT OF ENVIRONMENTAL SERVICES, CONSTRUCTION STANDARDS AND SPECIFICATIONS, AND WHERE APPLICABLE THE VIRGINIA DEPARTMENT OF TRANSPORTATION (VDOT) ROAD AND BRIDGE SPECIFICATIONS, AND ROAD AND BRIDGE STANDARDS. THE LATEST EDITIONS OF EACH RELEVANT MANUAL SHALL BE USED.
2. ALL CONSTRUCTION AND WORK ACTIVITIES SHALL COMPLY WITH THE VIRGINIA WORK AREA PROTECTION MANUAL AND ALL OTHER RELEVANT WORK SAFETY REQUIREMENTS, LATEST EDITIONS.
3. THE CONTRACTOR SHALL IMMEDIATELY NOTIFY THE PROJECT OFFICER OF ANY DISCREPANCIES BETWEEN ACTUAL FIELD CONDITIONS AND THE APPROVED PLANS.
4. THE CONTRACTOR SHALL CONTACT "MISS UTILITY" AT 811 FOR MARKING THE LOCATIONS OF EXISTING UNDERGROUND UTILITIES (i.e. WATER, SEWER, GAS, TELEPHONE, ELECTRIC, AND CABLE TV) AT LEAST 72 HOURS PRIOR TO ANY EXCAVATION OR CONSTRUCTION. THE CONTRACTOR IS REQUIRED TO IDENTIFY AND PROTECT ALL OTHER UTILITY LINES FOUND IN THE WORK SITE AREA BELONGING TO OTHER OWNERS THAT ARE NOT MEMBERS OF "MISS UTILITY". PRIVATE WATER, SEWER AND GAS LATERALS WILL NOT BE MARKED BY MISS UTILITY OR THE COUNTY. THE CONTRACTOR SHALL LOCATE AND PROTECT THESE SERVICES DURING CONSTRUCTION.
5. THE CONTRACTOR SHALL BE RESPONSIBLE FOR LAYING OUT THE WORK AND SHALL RETAIN A PROFESSIONAL LAND SURVEYOR LICENSED IN THE COMMONWEALTH OF VIRGINIA TO PROVIDE ALL NECESSARY CONSTRUCTION LAYOUTS AND ESTABLISH ALL CONTROL LINES, GRADES, AND ELEVATION DURING CONSTRUCTION. THE CONTRACTOR SHALL SUBMIT A COPY OF ALL CUT SHEETS FOR REVIEW, PER THE SPECIFICATIONS. THE COST OF ALL NECESSARY SURVEYING SERVICES SHALL BE CONSIDERED INCIDENTAL TO THE WORK AND, UNLESS OTHERWISE SPECIFIED, THE COST SHALL BE INCORPORATED INTO THE COSTS FOR RELEVANT ITEMS.
6. THE LOCATION OF ALL EXISTING UTILITIES SHOWN ON THESE PLANS ARE FROM BEST AVAILABLE RECORDS AND SHALL BE CONSIDERED TO BE APPROXIMATE. WHEN CONSTRUCTION ACTIVITY REACHES IN PROXIMITY TO EXISTING UTILITIES, THE TRENCH(IES) SHALL BE OPENED A SUFFICIENT DISTANCE AHEAD OF THE WORK OR TEST PITS SHALL BE MADE TO VERIFY THE EXACT LOCATION AND INVERTS OF THE UTILITY TO ALLOW FOR POSSIBLE CHANGES IN THE LINE OR GRADE AS DIRECTED BY OFFICER. THE CONTRACTOR SHALL BE RESPONSIBLE FOR ANY DAMAGE TO THE EXISTING UTILITIES AND THE RELATED STRUCTURES. ALL EXISTING UTILITY SYSTEMS SHALL BE PROTECTED TO PREVENT DAMAGE DURING THE CONTRACTOR'S OPERATIONS. ANY SYSTEM DAMAGED SHALL BE PROMPTLY REPAIRED AT NO COST TO THE OWNER.
7. EXISTING MANHOLE FRAMES, COVERS, VALVE BOXES, AND OTHER APPURTENANCES SHALL BE ADJUSTED TO THE FINAL GRADE OR REPLACED, AS NECESSARY. UNLESS OTHERWISE SPECIFIED, THE COST FOR THIS SHALL BE CONSIDERED INCIDENTAL TO THE WORK, AND SHALL BE INCORPORATED INTO THE COSTS FOR RELEVANT ITEMS.
8. THE CONTRACTOR SHALL PROVIDE ADA COMPLIANT ACCESS THROUGH OR AROUND THE SITE AT ALL TIMES AND SHALL ENSURE THE SAFETY OF ALL THOSE PASSING THROUGH OR ADJACENT TO THE SITE.

STORMWATER AND ENVIRONMENTAL PROTECTION

9. THE CONTRACTOR SHALL CONFINE ALL ACTIVITIES AT THE SITE ASSOCIATED WITH CONSTRUCTION ACTIVITIES, TO INCLUDE STORAGE OF EQUIPMENT AND OR MATERIALS, ACCESS TO THE WORK, FORMWORK, ETC. TO WITHIN THE DESIGNATED LIMITS OF DISTURBANCE (LOD).

TREE PROTECTION

10. TREES SHALL BE PROTECTED PER THE REQUIREMENTS OF ARLINGTON PARKS & RECREATION STANDARD.

TRAFFIC CONTROL

11. CONTRACTOR SHALL NOTIFY THE PROJECT OFFICER AT LEAST 3 WORKING DAYS PRIOR TO DISTURBING ANY EXISTING, OR INSTALLING ANY NEW, TRAFFIC SIGNS, SIGNALS, OR OTHER TRAFFIC CONTROL DEVICES.
12. THE CONTRACTOR SHALL PREMARK THE LAYOUT OF ANY PERMANENT TRAFFIC CONTROL STRIPING, INDICATING THE PROPOSED LOCATION AND TYPE OF MARKING TO BE INSTALLED. THE PREMARKING MAY CONSIST OF TYPE D TAPE, CHALK, OR LUMBER CRAYONS. THE CONTRACTOR SHALL ALLOW 3 WORKING DAYS FOR THE INSPECTION AND APPROVAL OF THE PREMARKINGS PRIOR TO PLACING THE PERMANENT MARKINGS.
13. THE CONTRACTOR SHALL SUBMIT ANY REQUESTS FOR TEMPORARY "NO PARKING" RESTRICTIONS TO THE PROJECT OFFICER AT LEAST 3 WORKING DAYS PRIOR TO THE DESIRED ONSET OF RESTRICTIONS.
14. THE CONTRACTOR SHALL PRESERVE ALL BUS STOPS, INCLUDING MAINTAINING ADEQUATE ACCESSIBILITY THROUGH AND ADJACENT TO THE CONSTRUCTION FOR BUSES AND THEIR PASSENGERS. THE CONTRACTOR SHALL NOT CLOSE, RELOCATE, OR OTHERWISE MODIFY A BUS STOP WITHOUT PRIOR REQUEST OF THE PROJECT OFFICER. TYPICALLY ANY RELOCATION OR CLOSURE OF A BUS STOP WILL REQUIRE AT LEAST FOUR WEEKS ADVANCE NOTICE FOR COORDINATION WITH THE COUNTY'S BUS STOP COORDINATOR. ALL TEMPORARY AND FINAL BUS TRAVEL LANE MUST BE MINIMUM 11' WIDE.
15. WHEN CONDITIONS WARRANT DUE TO TRAFFIC VOLUMES, PATTERNS, OR SPECIAL EVENTS, THE COUNTY MAY SUSPEND OR OTHERWISE DIRECT THE CONTRACTOR'S ACTIVITIES TO PROTECT THE PUBLIC AND OR THE COUNTY'S TRANSPORTATION NETWORK.

WATER DISTRIBUTION, STORM, AND SANITARY SEWER SYSTEMS

16. UNLESS OTHERWISE DIRECTED, CONTRACTORS ARE EXPRESSLY PROHIBITED FROM OPERATING ANY WATER VALVES OR APPURTENANCES. CONTRACTORS SHALL SUBMIT ALL REQUESTS FOR VALVE OPERATIONS TO THE PROJECT OFFICER AT LEAST 3 WORKING DAYS IN ADVANCE OF THE REQUIRED OPERATION.
17. IN THE EVENT OF A WATER OR SEWER EMERGENCY, THE CONTRACTOR SHALL IMMEDIATELY NOTIFY THE COUNTY'S WATER CONTROL CENTER AT 703-228-5555 AND THE PROJECT OFFICER.

TABLE OF CONTENTS

SHEET NUMBER	SHEET TITLE
1	COVER SHEET
2	LEGEND
3	DETAILS SHEET
4	EXISTING CONDITIONS
5	DEMOLITION PLAN
6	EROSION AND SEDIMENT CONTROL PLAN
7	GEOMETRIC CONTROL
8	PLAN AND PROFILE
9	RAMP DETAIL
10	CROSS SECTIONS
11	SIGNAGE AND STRIPING
12	MOT _PLAN I
13	MOT _PLAN II

ADT

17,000 -VPD N. FAIRFAX DRIVE - 2016 - TE & O
1,000 -VPD N. UTAH ST. - 2016 - TE & O

STREET CLASSIFICATION

MINOR ARTERIAL - N. UTAH ST. 25 MPH
TYPE A ARTERIAL - N. FAIRFAX DRIVE 30 MPH

POSTED/ DESIGN SPEED

30 MPH - N. FAIRFAX DRIVE
25 MPH - N. UTAH ST.

DESIGN VEHICLE

2011 AASHTO CITY BUS

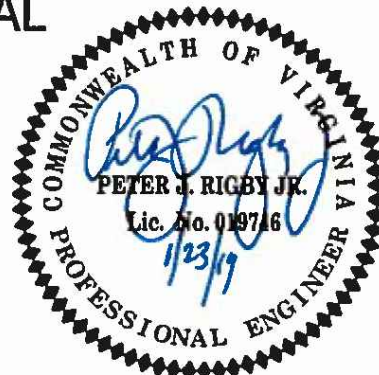
AUTOTURN (TURNING MOVEMENT) USED SPEED:10MPH



DEPARTMENT OF
ENVIRONMENTAL SERVICES
FACILITIES & ENGINEERING DIVISION
ENGINEERING BUREAU
2100 CLARENDON BOULEVARD, SUITE 813
ARLINGTON, VA 22201
PHONE: 703.228.3629
FAX: 703.228.3606

COPYRIGHT © 2016 ARLINGTON COUNTY
VIRGINIA - ALL RIGHTS RESERVED

SEAL



APPROVALS DATE

[Signature] 1/29/19

QUALITY CONTROL ENGINEER 1/29/19

[Signature] 1/29/19

CONSTRUCTION MANAGEMENT SUPERVISOR 1/29/19

[Signature] 1/29/19

WATER, SEWER, STREETS BUREAU CHIEF 1/29/19

[Signature] 1/29/19

TRANSPORTATION DIRECTOR 1/29/19

[Signature] 1/29/19

PROJECT MANAGER 1/29/19

REVISIONS DATE

FAIRFAX DR. @ N. UATH ST.

COVER SHEET

FAIRFAX DR. @ N. UTAH ST.
NE CORNER AT INTERSECTION

P14D

DESIGNED:

DRAWN :

CHECKED :

MISS UTILITY TRANSMITTAL #: N/A

FILENAME: P14D_200-COVER.DWG

PATH: Q:\DATA\P14D_200-CORRIDOR IMPROVEMENTS\SITE 4-2

FAIRFAX DRIVE & N. UTAH ST DESIGN/CONSTRUCTIVE

PLOTTED: APRIL 18 2019

PLOTTED BY: KPATEL

SCALE: AS NOTED

SHEET 1 OF 13

LINETYPE LEGEND		
FEATURE	EXISTING	PROPOSED
BACK OF CURB		
BUILDING		
CENTERLINE / BASELINE		
COMMUNICATIONS CABLE	COM	COM
CONTOURS	250 250 250	250 250 250
CRITICAL ROOT ZONE	CRZ CRZ	CRZ CRZ
EASEMENT		
ELECTRIC (UNDERGROUND)	UGE UGE	
FACE OF CURB		
FENCE (MATERIAL NOTED)	X X X X X	X X X X X
FIBER OPTIC		fo
GAS LINE	GAS GAS	GAS GAS
X" GAS LINE (SIZE INCLUDED IF AVAILABLE)	X" G X" G	X" G X" G
GUARDRAIL		
HARDSCAPE FEATURE (MATERIAL NOTED)		
LIMITS OF DISTURBANCE	LOD	LOD
LIMITS OF WORK	LOW LOW	LOW LOW
OVERHEAD WIRES		
PAVEMENT MINI SKIP LINE		
PAVEMENT SKIP LINE		
PROPERTY LINE		
RIGHT-OF-WAY LINE		
ROOT PRUNING	RP RP	RP RP
SANITARY SEWER		SAN SAN
X" SANITARY SEWER (SIZE INCLUDED IF AVAILABLE)	X" S X" S	
SILT FENCE	SF SF	SF SF
STORM (SIZE NOTED)		
STREAM		
STREET LIGHT CONDUIT	SL SL	SL SL
TELEPHONE (UNDERGROUND)	UGT	UGT
TREE LINE		
TREE PROTECTION FENCE	TPF TPF	TPF TPF
WALL		
WATER		
X" WATER (SIZE INCLUDED IF AVAILABLE)	X" W X" W	X" W X" W

SYMBOL LEGEND		
EXISTING		PROPOSED
EX BENCHMARK		PROP FIRE HYDRANT
EX CABLE PEDESTAL		PROP GAS VALVE
EX ELECTRIC BOX		PROP LIGHT POLE
EX FIRE HYDRANT		PROP PAY STATION
EX GAS VALVE		PROP SANITARY MANHOLE
EX GROUND LIGHT		PROP STORM CATCH BASIN (TO SCALE)
EX GUY WIRES		PROP STORM MANHOLE
EX IRON PIPE OR PIN		PROP TRAFFIC SIGN
EX LIGHT POLE		PROP TRASH CAN
EX MAILBOX		PROPOSED TREE REMOVAL
EX MONUMENT		PROP UTILITY POLE
EX PARKING METER		PROP WATER MANHOLE
EX PAY STATION		PROP WATER METER
EX SANITARY MANHOLE		PROP WATER VALVE
EX STORM BASIN		PROP YARD INLET (TO SCALE)
EX STORM MANHOLE		CONSTRUCTION NOTES (LEADER TO AREA AFFECTED)
EX TELEPHONE PEDESTAL		CURVE NUMBER (SEE CURVE TABLE)
EX TRAFFIC CONTROL BOX		LINE NUMBER (SEE LINE TABLE)
EX TRAFFIC SIGN		NORTH ARROW
EX TRASH CAN		TEST HOLE
EX TRAVERSE		
EX TREES, WOODED AREA		
EX UTILITY MANHOLE TYPE INDICATED ELECTRIC, TELE, ETC		
EX UTILITY POLE		
EX WATER MANHOLE		
EX WATER METER		
EX WATER VALVE		
EX YARD INLET		

HATCH LEGEND	
PROP MILL & OVERLAY SEE TYPICAL SECTION FOR DETAILS	
PROP FULL DEPTH ASPHALT SEE TYPICAL SECTION FOR DETAILS	
PROP CONCRETE	
REPLACE & MATCH EXISTING DRIVEWAY OR LEADWALK SEE CONSTRUCTION NOTES	
DEMOLITION AREA	

LABEL LEGEND	
EXISTING	PROPOSED
EX SAN STRUC NO. EXISTING SANITARY STRUCTURE NUMBER	PROP SAN SEW STRUC NO. PROPOSED SANITARY SEWER STRUCTURE NUMBER
EX STRM SEW STRUC NO. EXISTING STORM SEWER STRUCTUE NUMBER	PROP STRM SEW STRUC NO. PROPOSED STORM SEWER STRUCTURE NUMBER

SEAL	
APPROVALS	DATE
	1/29/19
QUALITY CONTROL ENGINEER	
	1/29/19
CONSTRUCTION MANAGEMENT SUPERVISOR	
	1/29/19
WATER SEWER, STREETS BUREAU CHIEF	
	1/29/19
TRANSPORTATION DIRECTOR	
	1/29/19
PROJECT MANAGER	

REVISIONS	DATE

FAIRFAX DR. @ N. UTAH ST.	LEGEND	FAIRFAX DR. @ N. UTAH ST. NE CORNER AT INTERSECTION P14D
---------------------------	--------	--

DESIGNED: K.PATEL
DRAWN : K.PATEL
CHECKED : P.RIGBY
MISS UTILITY TRANSMITTAL #: N/A
FILENAME: P14D_A-2-202-LEGEND.DWG
PATH: Q:\DATA\PLANS\DR CORRIDOR IMPROVEMENTS\SITE A-2 FAIRFAX DRIVE @ N UTAH ST\DESIGN\CAV ACTIVE
PLOTTED: APRIL 18 2019
PLOTTED BY: KPATEL

SCALE:

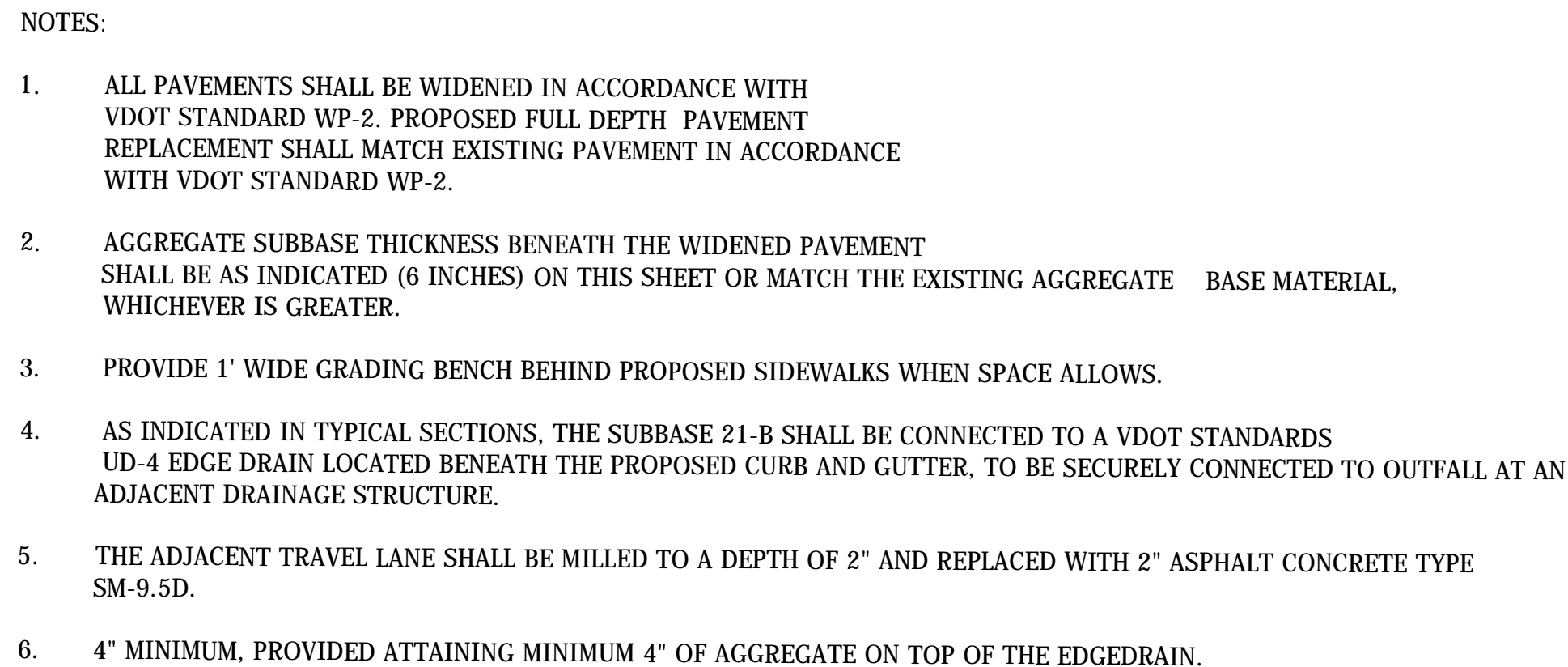
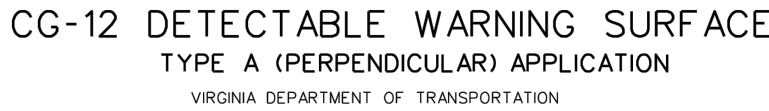
SEAL 

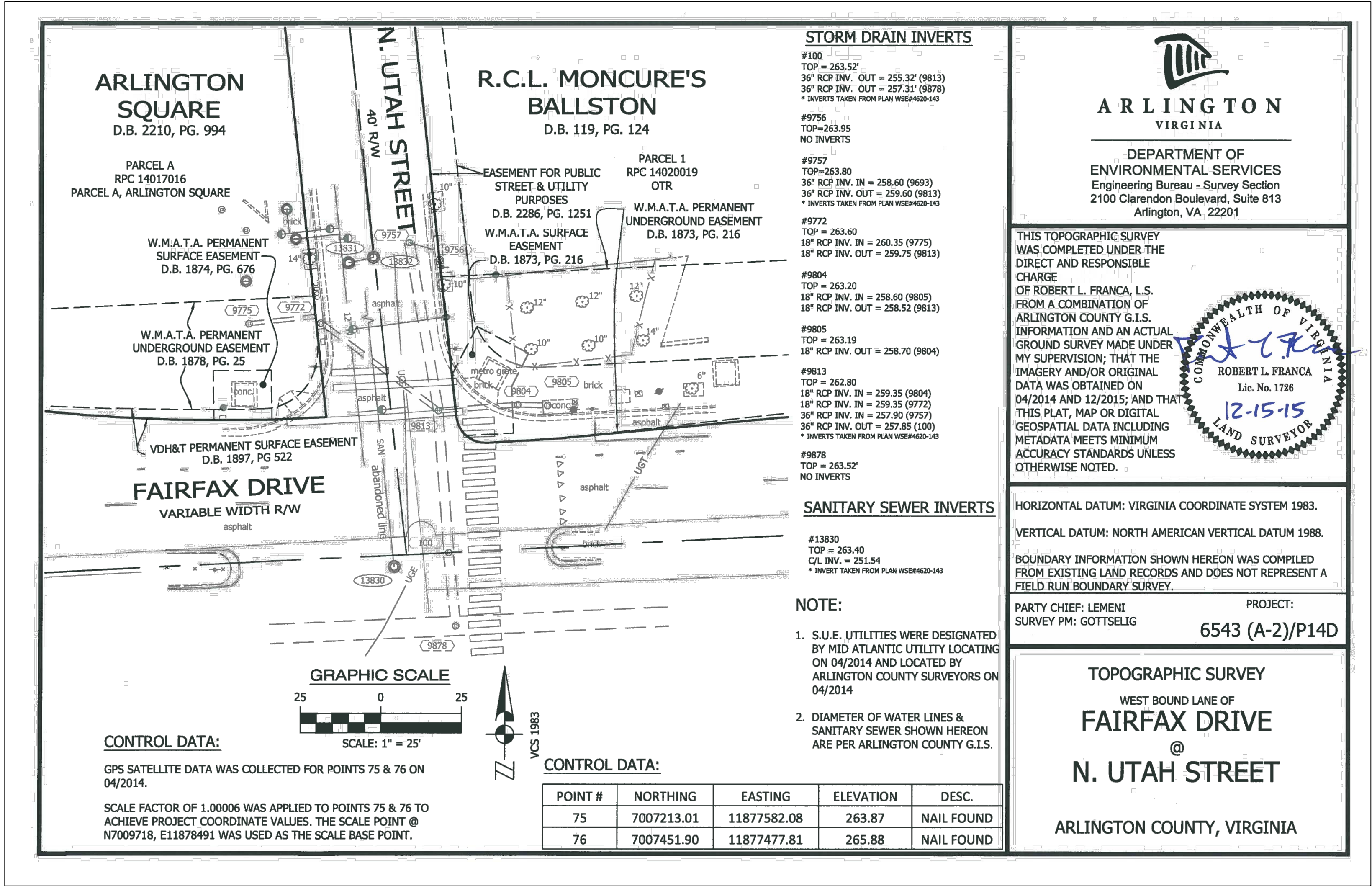
FAIRFAX DR. @ N. UTAH ST.

DETAILS SHEET
FAIRFAX DR. @ N. UTAH ST.
ONE CORNER AT INTERSECTION

SCALE:

FAIRFAX DR. @ N. UTAH ST.

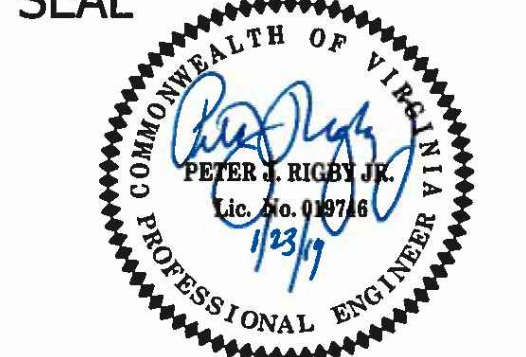




DEPARTMENT OF ENVIRONMENTAL SERVICES
FACILITIES & ENGINEERING DIVISION
ENGINEERING BUREAU
2100 CLARENDON BOULEVARD, SUITE 813
ARLINGTON, VA 22201
PHONE: 703.228.3629
FAX: 703.228.3606

COPYRIGHT © 2016 ARLINGTON COUNTY VIRGINIA - ALL RIGHTS RESERVED

SEAL



APPROVALS DATE

QUALITY CONTROL ENGINEER 1/29/19
CONSTRUCTION MANAGEMENT SUPERVISOR 1/29/19
WATER, SEWER, STREETS BUREAU CHIEF 1/29/19
TRANSPORTATION DIRECTOR 1/29/19
PROJECT MANAGER 1/29/19

REVISIONS DATE

FAIRFAX DR. @ N. UTAH ST.
EXISTING CONDITIONS
FAIRFAX DR. @ N. UTAH ST.
NE CORNER AT INTERSECTION
P14D

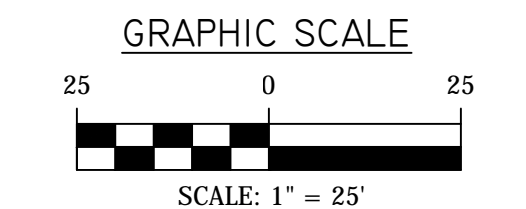
DESIGNED: K. PATEL
DRAWN : K. PATEL
CHECKED : P. RIGBY
MISS UTILITY TRANSMITTAL #: N/A

FILENAME: P14D-214- EXISTING_CONDITIONS.DWG

PATH: Q:\DATA\PLAT_88 CORRIDOR IMPROVEMENTS\SITE A-2 FAIRFAX DRIVE & N UTAH ST\EXISTING CAD\ACTIVE

PLOTTED: APRIL 18 2019
PLOTTED BY: KPATEL

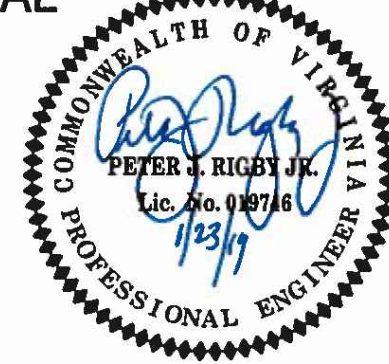
SCALE: AS NOTED



SHEET 4 OF 13

FAIRFAX DR. @ N. UTAH ST.

SEAL



APPROVALS	DATE
	1/29/19
QUALITY CONTROL ENGINEER	
	1/29/19
CONSTRUCTION MANAGEMENT SUPERVISOR	
	1/29/19
WATER, SEWER, STREETS BUREAU CHIEF	
	1/29/19
TRANSPORTATION DIRECTOR	
	1/29/19
PROJECT MANAGER	

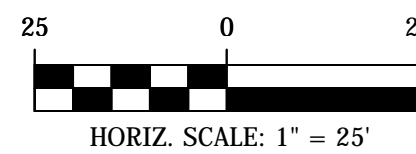
REVISIONS	DATE

FAIRFAX DR. @ N. UTAH ST.

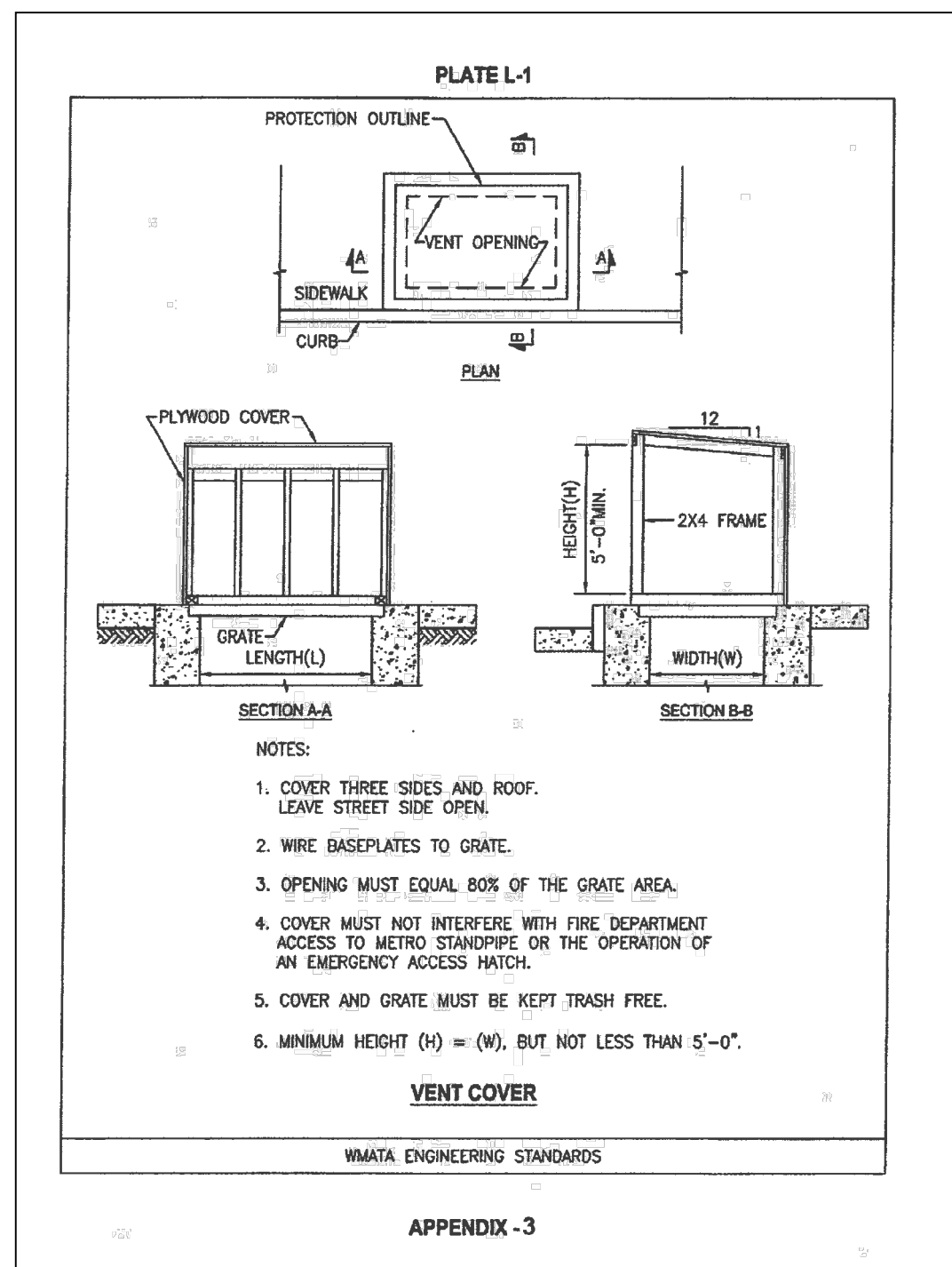
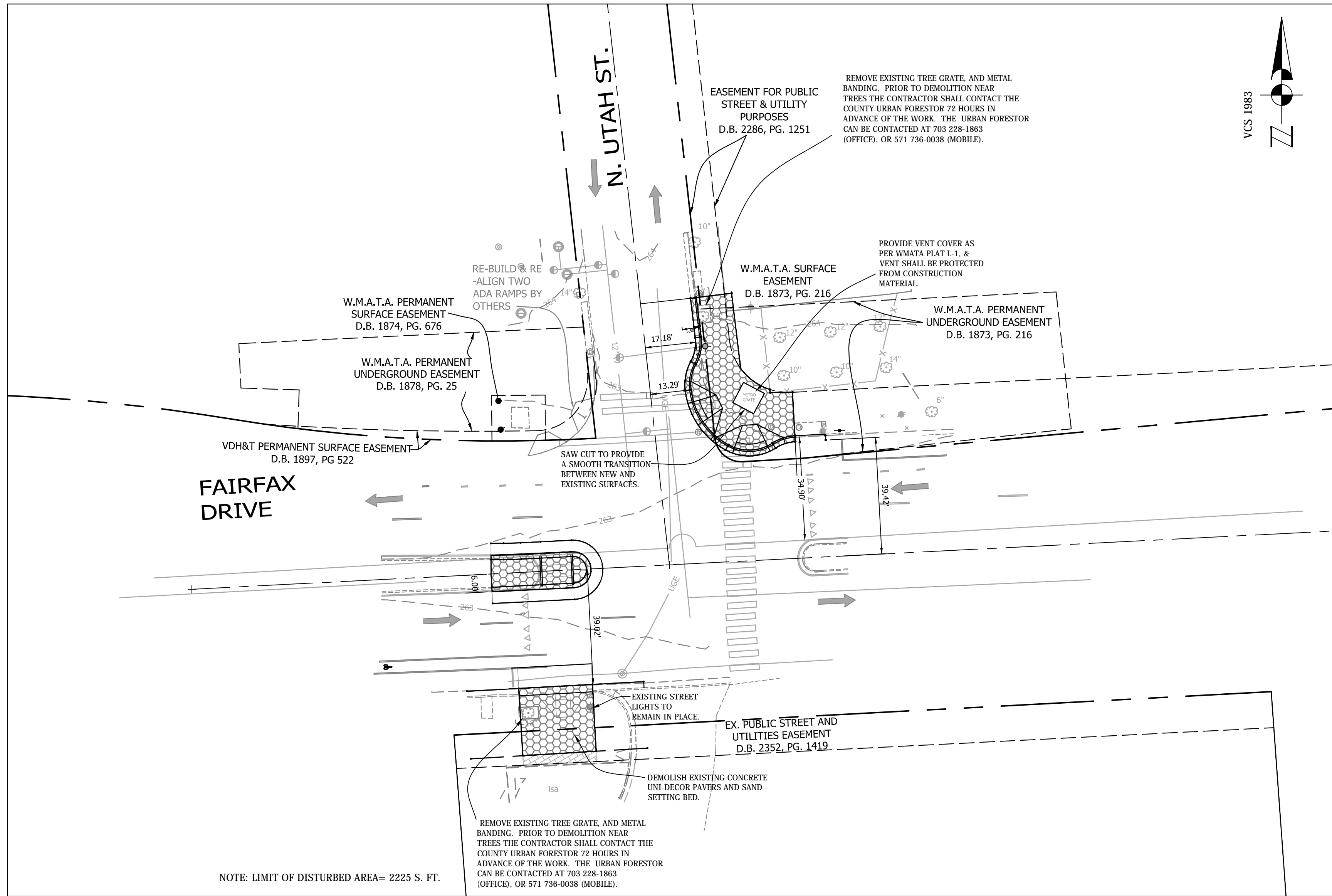
DEMOLITION PLAN
FAIRFAX DR. @ N. UTAH ST.
NE CORNER AT INTERSECTION
P14D

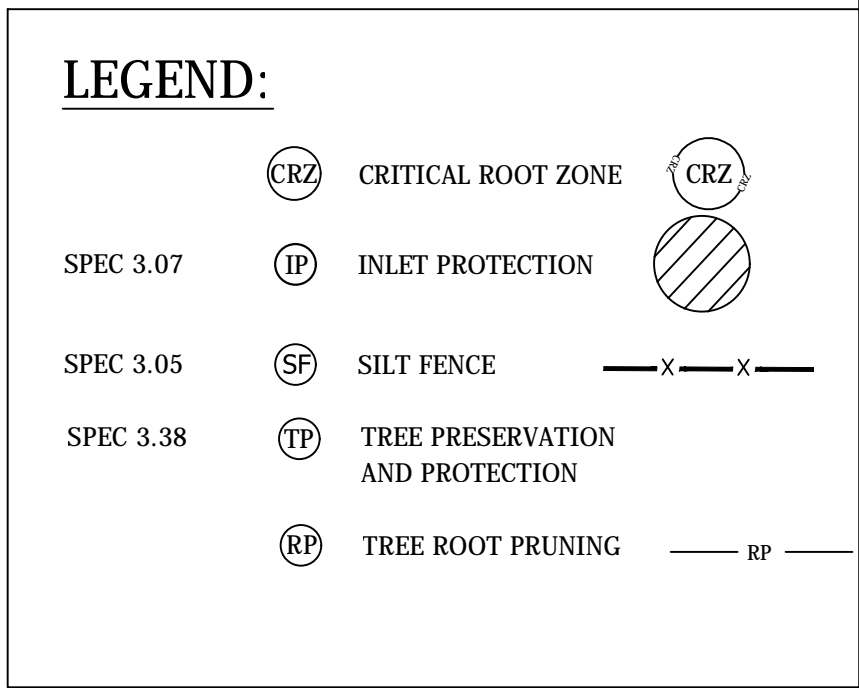
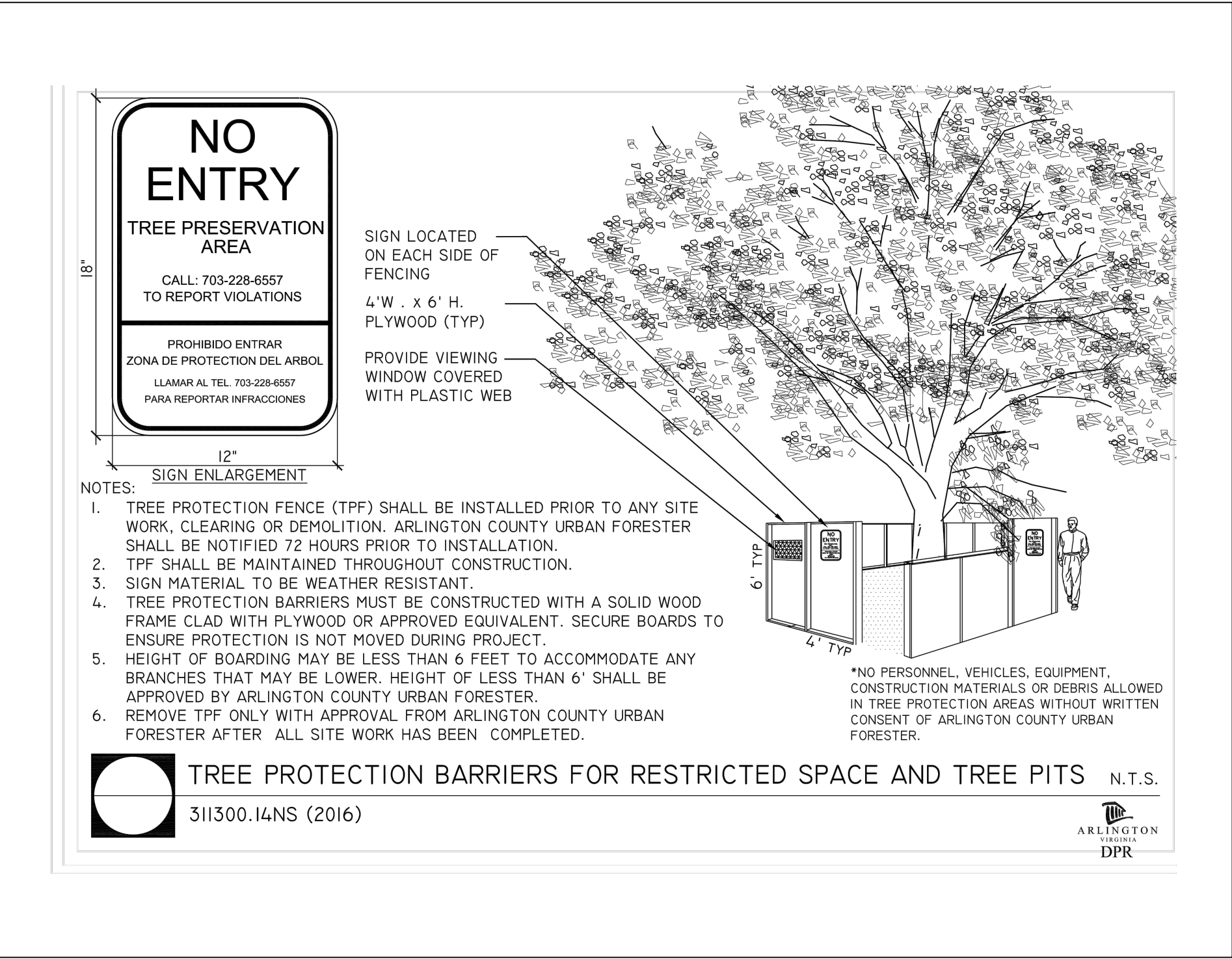
DESIGNED: K.PATEL
DRAWN : K.PATEL
CHECKED : P.RIGBY
MISS UTILITY TRANSMITTAL #: N/A
FILENAME: P14D-228-DEMOLITION_PLAN.DWG
PATH: Q:\DATA\PLANS-AR\CONCORD\IMPROVEMENTS\SITE A-2 FAIRFAX DRIVE & N UTAH ST\DESIGN\CA\ACTIVE
PLOTTED: APRIL 18 2019
PLOTTED BY: K.PATEL

SCALE: AS NOTED



SHEET 5 OF 13





- 1 CONTRACTOR TO CONTACT THE ARLINGTON FORESTER TO SCHEDULE A
PRE-CONSTRUCTION INSPECTION OF THE TREE PROTECTION MEASURES
BEFORE ANY WORK NEAR THE CRITICAL ROOT ZONES OF THE TREE. TO
SCHEDULE THE PRE-CONSTRUCTION MEETING CALL 703-228-1863
- 2 CONTRACTOR TO PROTECT TREES PER THE PLAN ACCORDING TO THE
ARLINGTON COUNTY DPR DESIGN STANDARD DETAIL 02231.1
- 3 CONTRACTOR TO ROOT PRUNE TREE PER THE PLAN ACCORDING TO THE
ARLINGTON COUNTY DPR DESIGN STANDARD DETAIL 02231.5, WHERE CALLED
OUT ON THE PLAN
- 4 CONTRACTOR TO CALL THE URBAN FORESTER AT 703-228-1863, 72 HOURS
BEFORE PLANTING , TO SCHEDULE INSPECTION OF THE TREES TO BE
PLANTED.WARRANTY FOR 1 YEAR AFTER PLANTING SHALL BE THE
CONTRACTOR'S RESPONSIBILITY. THE URBAN FORESTER AND DPR IS
RESPONSIBLE FOR INSPECTION.
- 5 CONTRACTOR TO CONTACT THE ASSIGNED CONSTRUCTION MANAGEMENT
SPECIALIST ON THE LDA PERMITS FROM THE DEVELOPMENT SERVICE BUREAU
BEFORE START OF CONSTRUCTION

PLAN

CATCH BASIN

SEE DETAIL (A) OR (B) FOR APPLICATION

CLOSED BASKET WITH UNIFORM 20 GAUGE WIRE REVERSE TWIST MESH 1" GALVANIZED HEX WIRE STEEL (CHICKEN WIRE)

CURB

MIN. 18" OR MAINTAIN WITHIN GUTTER PAN

MIN. 18" EXTENSION BEYOND INLET THROAT ON BOTH SIDES

GRAVEL (SEE NOTE 2)

DETAIL A: CONTINUOUS GRADE

ATTACH 2" X 4" WOOD SPACER TO 2" X 4" WEIR

OVERFLOW ORIFICE

2" X 4" WEIR

GUTTER

DETAIL B: SUMP

ATTACH 4" X 4" WOOD SPACER TO 2" X 4" WEIR

OVERFLOW ORIFICE

2" X 4" WEIR

GUTTER

SECTION A-A

WOOD SPACER 2" X 4" CONTINUOUS GRADE 4" X 4" IN SUMP

INSTALL WEIR 1" BELOW TOP OF CURB (SEE NOTE 3)

CATCH BASIN

GRAVEL (SEE NOTE 2)

CLOSED BASKET—UNIFORM 20 GAUGE WIRE REVERSE TWIST MESH 1" GALVANIZED HEX WIRE STEEL (CHICKEN WIRE)

ISOMETRIC

2" X 4" WOOD WEIR

WOOD SPACER 2" X 4" CONTINUOUS GRADE 4" X 4" IN SUMP

ATTACH WOOD SPACER TO 2" X 4" WEIR

2" X 4" WEIR

INSTALL SPACER 6" BEYOND THROAT OPENING

GUTTER PAN

NOTES

1. DIMENSIONAL LUMBER SIZES SHOW.
2. GRAVEL SHALL BE VDOT COARSE AGGREGATE #3, # 357 OR #5.
3. WEIR HEIGHT MAY BE ADJUSTED BY PROJECT OFFICER OR INSPECTOR IN FLOOD PRONE AREAS.
4. PAINT 2"X4" WEIR, CLOSED BASKET, AND GUTTER WITH HIGH VISIBILITY INCANDESCENT ORANGE PAINT.
5. REMOVE SEDIMENT AFTER EACH RAIN EVENT TO MAINTAIN FUNCTION AND AVOID PREMATURE CLOGGING. IF INLET PROTECTION DOES NOT COMPLETELY DRAIN WITHIN 24 HOURS AFTER A STORM EVENT, IT IS CLOGGED, WHEN THIS OCCURS, REMOVE ACCUMULATED SEDIMENT AND CLEAN, OR REPLACE THE PROTECTION.

CURB INLET PROTECTION

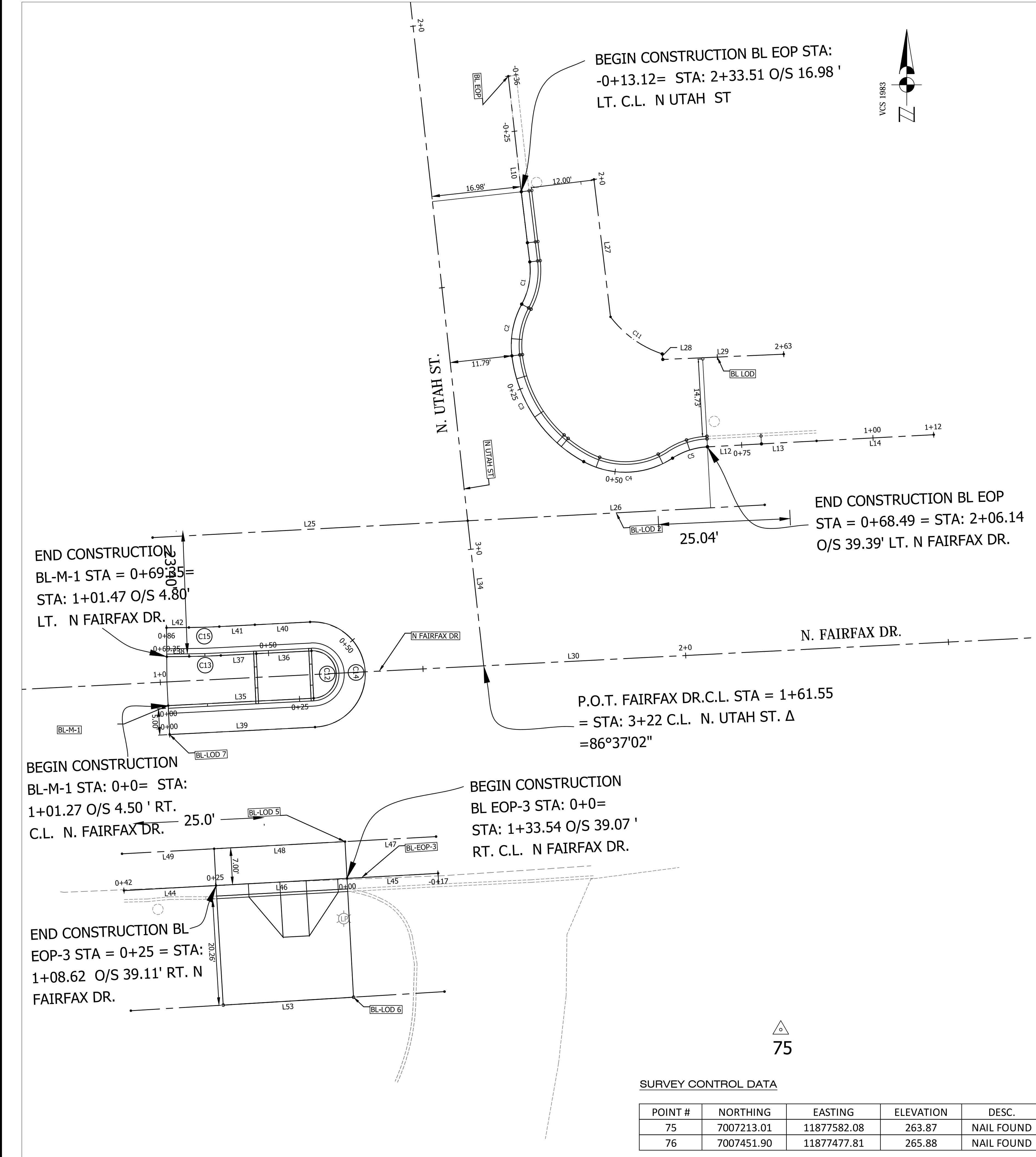
	REVISION & DATE

ARLINGTON COUNTY, VIRGINIA
DEPARTMENT OF ENVIRONMENTAL SERVICES

DRAWING NO.
3.07-7 (ACG)

FAIRFAX DR. @ N. UTAH ST.
 EROSION AND SEDIMENT CONTROL PLAN
 FAIRFAX DR. @ N. UTAH ST.
 NE CORNER AT INTERSECTION
 P14D

DESIGNED: K.PATEL
 DRAWN : K.PATEL
 CHECKED : P.RIGBY
 MISS UTILITY TRANSMITTAL #: N/A
 FILENAME: P14D-A-2-224-E_AND_S_PLAN.DWG
 PATH: Q:\DATA\460_48_49_CORRIDOR IMPROVEMENTS SITE 4 FAIRFAX DRIVE
 UTAH ST DESIGN\CAP.ACTIVE
 PLOTTED: APRIL 18 2019
 PLOTTED BY: KPATEL



BL EOP							
	Length	Radius	Line/Chord Direction	Station (Start)	Station (End)	Northing, Easting (Start)	Northing, Easting (End)
C1	8.30	13.50	S10° 44' 54.85"W	-0+00.00	0+08.30	7007358.88, 11877534.35	7007350.85, 11877532.83
C2	10.15	16.50	S10° 44' 54.85"W	0+08.30	0+18.46	7007350.85, 11877532.83	7007341.04, 11877530.96
C3	25.24	26.50	S34° 09' 23.17"E	0+18.46	0+43.69	7007341.04, 11877530.96	7007320.93, 11877544.60
C4	17.72	16.50	N87° 47' 16.26"E	0+43.69	0+61.42	7007320.93, 11877544.60	7007321.58, 11877561.48
C5	7.03	13.50	N71° 56' 17.32"E	0+61.42	0+68.45	7007321.58, 11877561.48	7007323.74, 11877568.09
L10	22.10		S6° 24' 01.67"E	-0+35.53	-0+13.42	7007394.17, 11877530.28	7007372.21, 11877532.75
L12	10.32		N86° 51' 46.45"E	0+68.45	0+78.77	7007323.74, 11877568.09	7007324.30, 11877578.39
L13	10.50		N86° 56' 37.32"E	0+78.77	0+89.27	7007324.30, 11877578.39	7007324.86, 11877588.87
L14	22.29		N86° 56' 37.32"E	0+89.27	1+11.56	7007324.86, 11877588.87	7007326.05, 11877611.13

BL LOD							
	Length	Radius	Line/Chord Direction	Station (Start)	Station (End)	Northing, Easting (Start)	Northing, Easting (End)
C11	12.26	20.54	S54° 22' 10.79"E	2+26.31	2+38.57	7007348.43, 11877549.71	7007341.40, 11877559.53
L27	26.31		S6° 52' 30.66"E	2+00.00	2+26.31	7007374.55, 11877546.56	7007348.43, 11877549.71
L28	1.06		S6° 09' 44.20"E	2+38.57	2+39.62	7007341.40, 11877559.53	7007340.35, 11877559.64
L29	23.01		N87° 28' 33.54"E	2+39.62	2+62.63	7007340.35, 11877559.64	7007341.36, 11877582.63

BL-LOD 2							
	Length	Radius	Line/Chord Direction	Station (Start)	Station (End)	Northing, Easting (Start)	Northing, Easting (End)
L25	59.98		N86° 56' 37.32"E	1+00.00	1+59.98	7007306.50, 11877462.67	7007309.70, 11877522.56
L26	56.53		N86° 56' 37.32"E	1+59.98	2+16.51	7007309.70, 11877522.56	7007312.72, 11877579.01

N FAIRFAX DR							
	Length	Radius	Line/Chord Direction	Station (Start)	Station (End)	Northing, Easting (Start)	Northing, Easting (End)
L30	428.85		N87° 04' 44.44"E	0+00.00	4+28.85	7007273.91, 11877364.26	7007295.76, 11877792.56

N UTAH ST							
	Length	Radius	Line/Chord Direction	Station (Start)	Station (End)	Northing, Easting (Start)	Northing, Easting (End)
L34	322.27		S6° 18' 14.00"E	0+00.00	3+22.27	7007602.46, 11877490.22	7007282.14, 11877525.61


BL-M-1							
	Length	Radius	Line/Chord Direction	Station (Start)	Station (End)	Northing, Easting (Start)	Northing, Easting (End)
C12	14.14	4.50	N2° 38' 33.49"W	0+27.68	0+41.82	7007275.99, 11877493.28	7007284.98, 11877492.87
C13	6.02	143.98	S88° 16' 36.68"W	0+59.08	0+65.10	7007284.10, 11877475.63	7007283.92, 11877469.61
L35	27.68		N87° 05' 01.25"E	0+00.00	0+27.68	7007274.58, 11877465.63	7007275.99, 11877493.28
L36	10.50		S87° 05' 30.84"W	0+41.82	0+52.32	7007284.98, 11877492.87	7007284.44, 11877482.38
L37	6.76		S87° 04' 44.44"W	0+52.32	0+59.08	7007284.44, 11877482.38	7007284.10, 11877475.63
L38	4.25		S89° 28' 28.91"W	0+65.10	0+69.35	7007283.92, 11877469.61	7007283.88, 11877465.36

BL-LOD 7							
	Length	Radius	Line/Chord Direction	Station (Start)	Station (End)	Northing, Easting (Start)	Northing, Easting (End)
C14	31.42	10.00	N2° 43' 52.95"W	0+27.67	0+59.09	7007270.49, 11877493.55	7007290.47, 11877492.60
C15	5.79	138.48	S88° 16' 36.68"W	0+76.36	0+82.15	7007289.59, 11877475.35	7007289.42, 11877469.56
L39	27.67		N87° 05' 01.25"E	0+00.00	0+27.67	7007269.08, 11877465.91	7007270.49, 11877493.55
L40	10.51		S87° 05' 30.83"W	0+59.09	0+69.60	7007290.47, 11877492.60	7007289.94, 11877482.10
L41	6.76		S87° 04' 44.44"W	0+69.60	0+76.36	7007289.94, 11877482.10	7007289.59, 11877475.35
L42	4.25		S89° 28' 28.91"W	0+82.15	0+86.40	7007289.42, 11877469.56	7007289.38, 11877465.31

BL-EOP-3							
	Length	Radius	Line/Chord Direction	Station (Start)	Station (End)	Northing, Easting (Start)	Northing, Easting (End)
L44	17.53		S86° 52' 11.81"W	0+24.92	0+42.45	7007240.39, 11877474.74	7007239.43, 11877457.23
L45	17.33		S86° 52' 11.81"W	-0+17.33	0+00.00	7007242.70, 11877516.92	7007241.75, 11877499.62
L46	24.92		S86° 52' 11.81"W	0+00.00	0+24.92	7007241.75, 11877499.62	7007240.39, 11877474.74

BL-LOD 5							
	Length	Radius	Line/Chord Direction	Station (Start)	Station (End)	Northing, Easting (Start)	Northing, Easting (End)
L47	17.33		S86° 52' 11.81"W	-0+17.33	0+00.00	7007249.69, 11877516.54	7007248.74, 11877499.24
L48	24.92		S86° 52' 11.81"W	0+00.00	0+24.92	7007248.74, 11877499.24	7007247.38, 11877474.36
L49	17.53		S86° 52' 11.81"W	0+24.92	0+42.45	7007247.38, 11877474.36	7007246.42, 11877456.85

BL-LOD 6							
	Length	Radius	Line/Chord Direction	Station (Start)	Station (End)	Northing, Easting (Start)	Northing, Easting (End)
L53	59.73		S86° 31' 12.76"W	-0+17.33	0+42.40	7007220.23, 11877518.15	7007216.60, 11877458.53

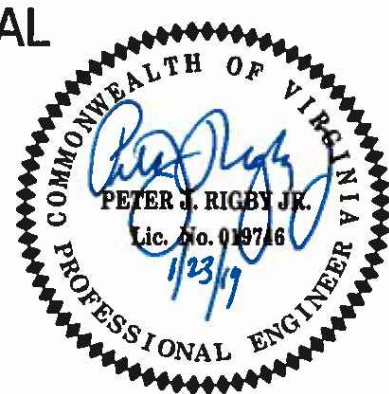



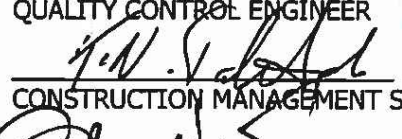
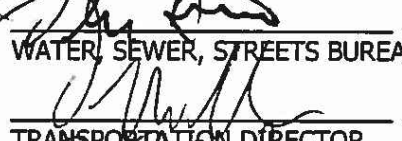
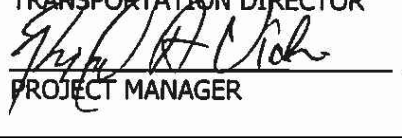

ARLINGTON
VIRGINIA

DEPARTMENT OF
ENVIRONMENTAL SERVICES
FACILITIES & ENGINEERING DIVISION
ENGINEERING BUREAU
2100 CLARENDON BOULEVARD, SUITE 813
ARLINGTON, VA 22201
PHONE: 703.228.3629
FAX: 703.228.3606

COPYRIGHT © 2016 ARLINGTON COUNTY VIRGINIA - ALL RIGHTS RESERVED

SEAL



APPROVALS	DATE
	1/29/19
QUALITY CONTROL ENGINEER	
	1/29/19
CONSTRUCTION MANAGEMENT SUPERVISOR	
	1/29/19
WATER SEWER, STREETS BUREAU CHIEF	
	1/29/19
TRANSPORTATION DIRECTOR	
	1/29/19
PROJECT MANAGER	

REVISIONS	DATE

FAIRFAX DR. @ N. UTAH ST.

GEOMETRIC CONTROL

FAIRFAX DR. @ N. UTAH ST.

NE CORNER AT INTERSECTION

P14D

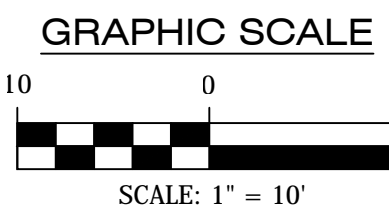
DESIGNED: K.PATEL
DRAWN : K.PATEL
CHECKED : P.RIGBY
MISS UTILITY TRANSMITTAL #: N/A

FILENAME: P14D-122-A2 CORRIDOR.DWG

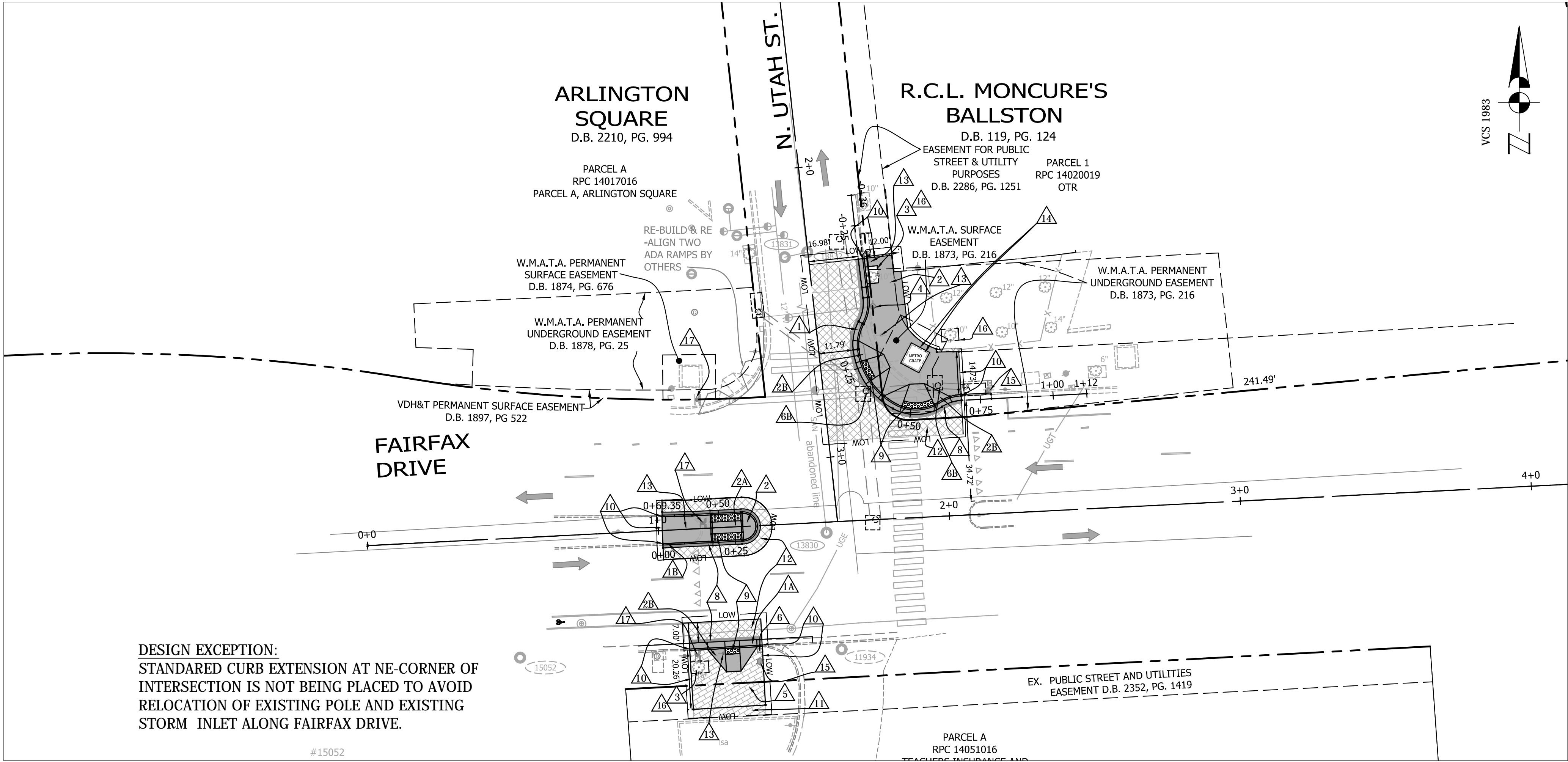
PATH: Q:\DATA\PLANS\400 CORRIDOR IMPROVEMENTS\SITE A 2 FAIRFAX DRIVE & N UTAH ST\DESIGN\CAV.ACTIVE

PLOTTED: APRIL 18 2019
PLOTTED BY: KPATEL

SCALE: AS NOTED



SHEET 7 OF 13



NOTE:

PROJECT MANAGER: RICHARD VIOLA, ARLINGTON COUNTY, 703-228-3699

SURVEYED BY: COUNTY SURVEYOR, ARLINGTON COUNTY, 703-228-7496

DESIGNED BY: K. PATEL, ARLINGTON COUNTY, 703-228-3503

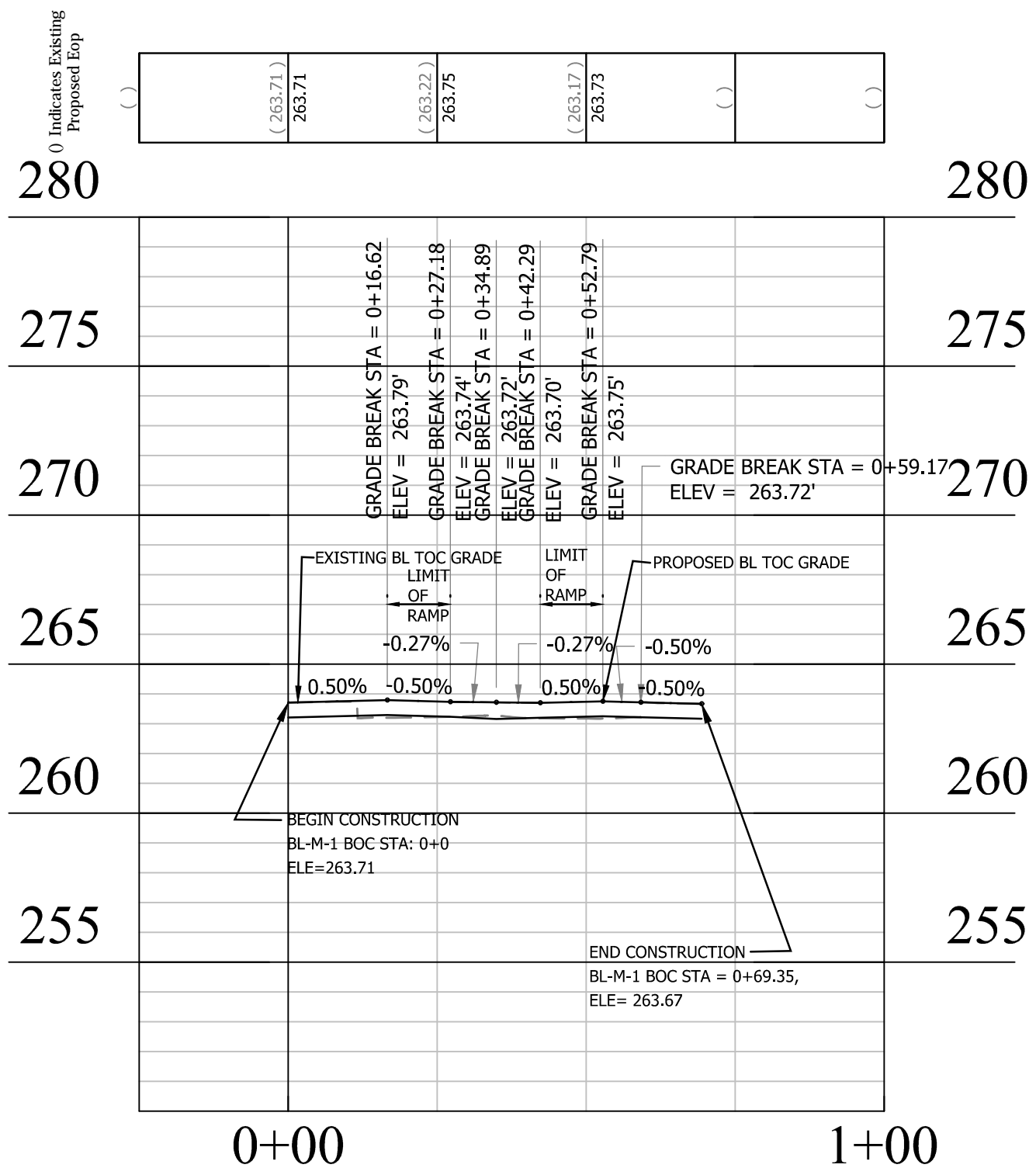
SUBSURFACE UTILITY

DATA PROVIDED BY : ARLINGTON COUNTY, ARLINGTON COUNTY, 703-228-7496

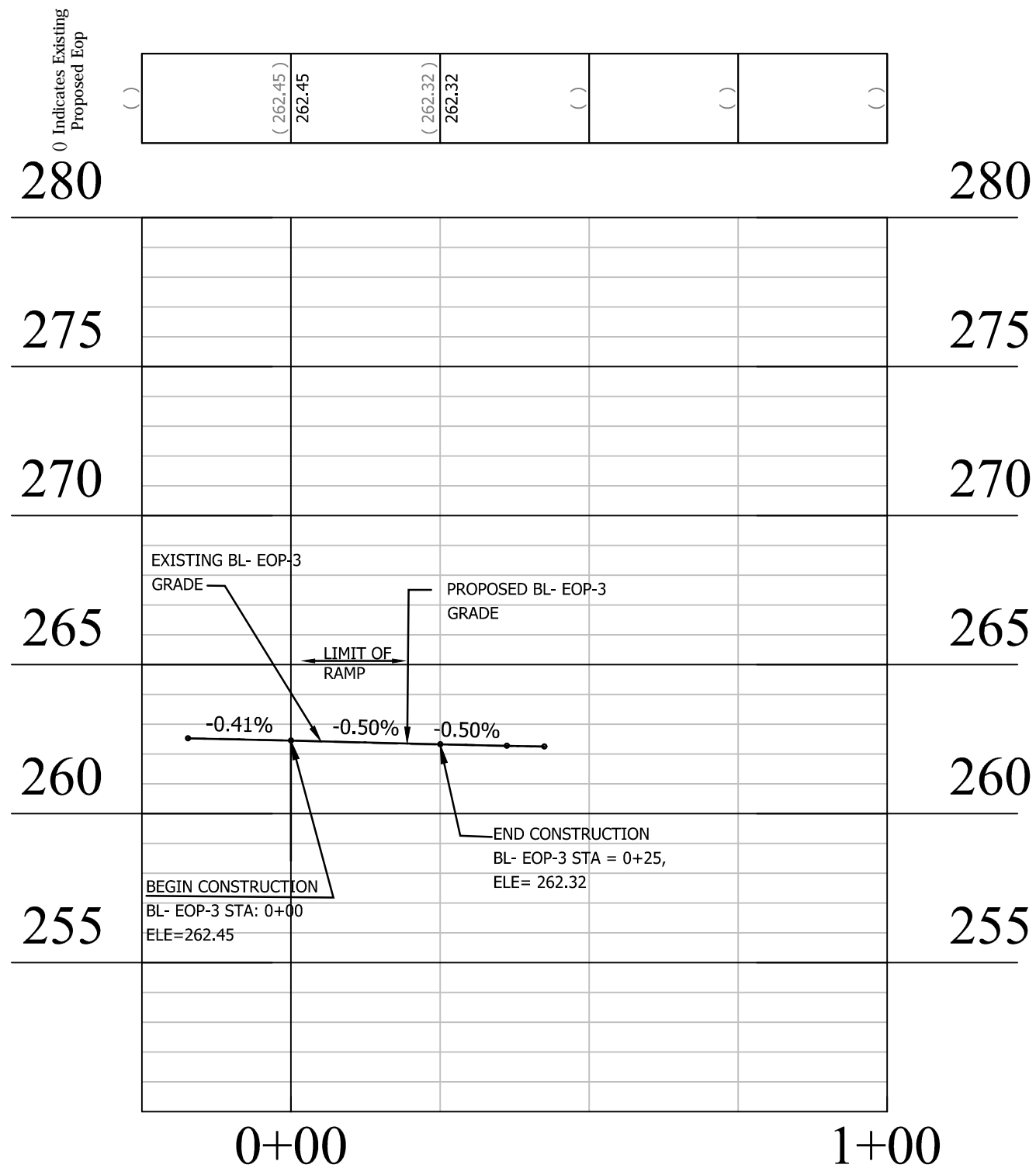
CONSTRUCTION NOTES

- 1 NEW CURB AND GUTTER (C-2) ARLINGTON COUNTY STANDARD (R-2.0)
- 1A NEW CURB AND GUTTER (CG-6) VDOT STANDARD (201.03)
- 1B NEW CONCRETE CURB, STANDARD 6" (VDOT CG-2). INCLUDES CURB FOR APRONS, RAMPS, ETC.
- 2 NEW CONCRETE SIDEWALK, 6" CLASS A3 (VDOT ROAD & BRIDGE STANDARDS (SECTION 504).
- 2A NEW MEDIAN WITH RAMP (TYPE M-1 MOD.) VDOT ROAD & BRIDGE STANDARDS (203.09). SEE DETAILS ON SHEET 3
- 2B NEW CURB RAMP (CG-12A MOD.) VDOT ROAD & BRIDGE STANDARDS (203.06).
- 3 REMOVE TREE GRATES & MULCH TREE PITS IMPACTED. TREE PITS ARE EXCLUDED FROM L.D.A.
- 3A ADJUST EXISTING FIRE HYDRANT TO PROPOSED GRADE
- 3B REMOVE AND RESET CONCRETE PAVERS. (ARLINGTON COUNTY DETAIL R-2.6. INCLUDE ALL MATERIALS AS SHOWN IN DETAILS)
- 3C UTILITY MANHOLE OR TRAFFIC BOX. VERTICAL ADJUSTMENT TO NEW GRADE (ARLINGTON COUNTY DETAIL S-2.5 TYPE A)
- 3D ADJUST EXISTING STORM SEWER MANHOLE COVERS TO PROPOSED GRADE (ARLINGTON COUNTY DETAIL S-2.5 TYPE A)
- 4 PROPOSED ASPHALT - FULL DEPTH REPLACEMENT ARLINGTON COUNTY STANDARD (R-1.3)
- 4A PROPOSED DETECTABLE WARNING SURFACE DARK GRAY COLOR PER ARLINGTON COUNTY STANDARDS H-3.2. CURB RAMPS
- 4B MATCH EXISTING T.O.C. OR SIDEWALK GRADE. (CLEAN LINE SAW CUT AND PAVER RESET BE NEEDED.)
- 4C REPLACE & MATCH EXISTING SIDEWALK TO PROPOSED GRADE WITH LIKE MATERIAL
- 4D ASPHALT - MILL AND OVERLAY (4" TO 3") PER ARLINGTON COUNTY STANDARD (R-1.4)
- 4E RELOCATE TRAFFIC CONTROL SIGNS, WITH NEW POST (D1-3B) INSTALL PER DETAIL (SG-1.0) SEE SHEET # 11 (R3-4, R1-1, & 1-6 METRO BUS) CALL ARLINGTON COUNTY TRAFFIC DIVISION TO RELOCATE.
- 4F PROVIDE VENT COVER AS PER WMATA PLAT L-1. AND PROVIDE SMOOTH CLEAN, FINISH TRANSITION IN THIS AREA OF EXPOSED WALL. (SEE PAGE 5 & 9 FOR DETAILS) CONTRACTOR TO OBTAIN NECESSARY WMATA PERMITS.
- 4G EXISTING STREET LIGHT / TRAFFIC POLE TO BE REMAIN.
- 4H PROTECT TREE DURING CONSTRUCTION OF PROPOSED WORK AS SHOWN. CALL URBAN FORESTER (702-228-6557) PRIOR TO BEGINNING WORK.
- 4I FURNISH AND INSTALL SOLAR POWERED FLASHING BEACON. CALL ARLINGTON COUNTY TRAFFIC DIVISION PRIOR TO BEGINNINGS THE WORK.

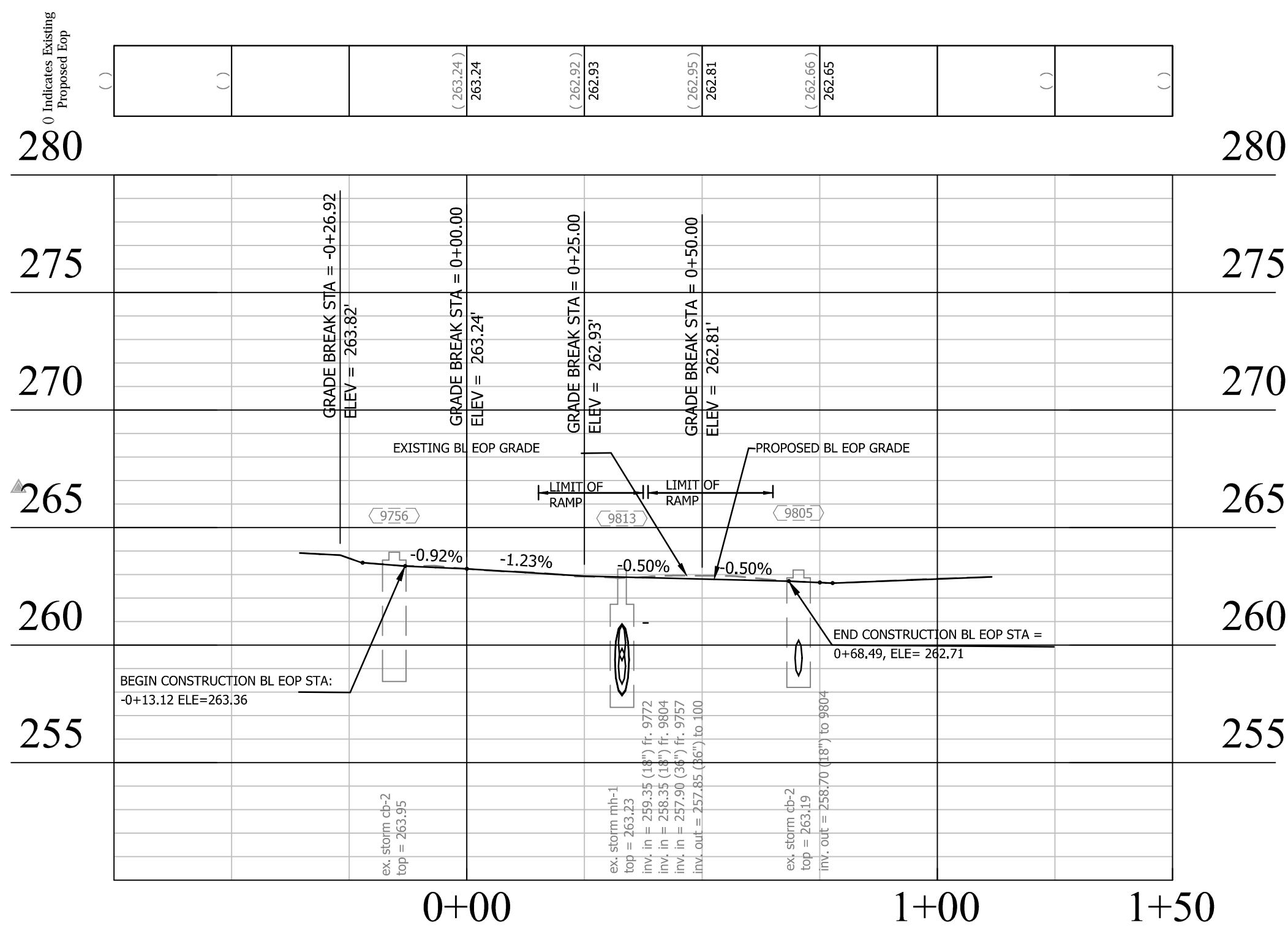
PROFILE BL-M-1 TOC



PROFILE BL-EOP-3



PROFILE BL EOP



DEPARTMENT OF
ENVIRONMENTAL SERVICES
FACILITIES & ENGINEERING DIVISION
ENGINEERING BUREAU
2100 CLARENDON BOULEVARD, SUITE 813
ARLINGTON, VA 22201
PHONE: 703.228.3629
FAX: 703.228.3606

COPYRIGHT © 2016 ARLINGTON COUNTY
VIRGINIA - ALL RIGHTS RESERVED

SEAL



APPROVALS DATE

QUALITY CONTROL ENGINEER 1/29/19
CONSTRUCTION MANAGEMENT SUPERVISOR 1/29/19
WATER SEWER, STREETS BUREAU CHIEF 1/29/19
TRANSPORTATION DIRECTOR 1/29/19
PROJECT MANAGER 1/29/19

REVISIONS DATE

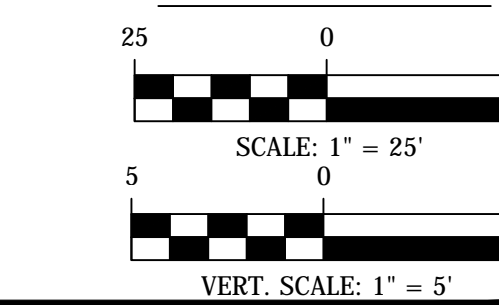
REVISIONS	DATE

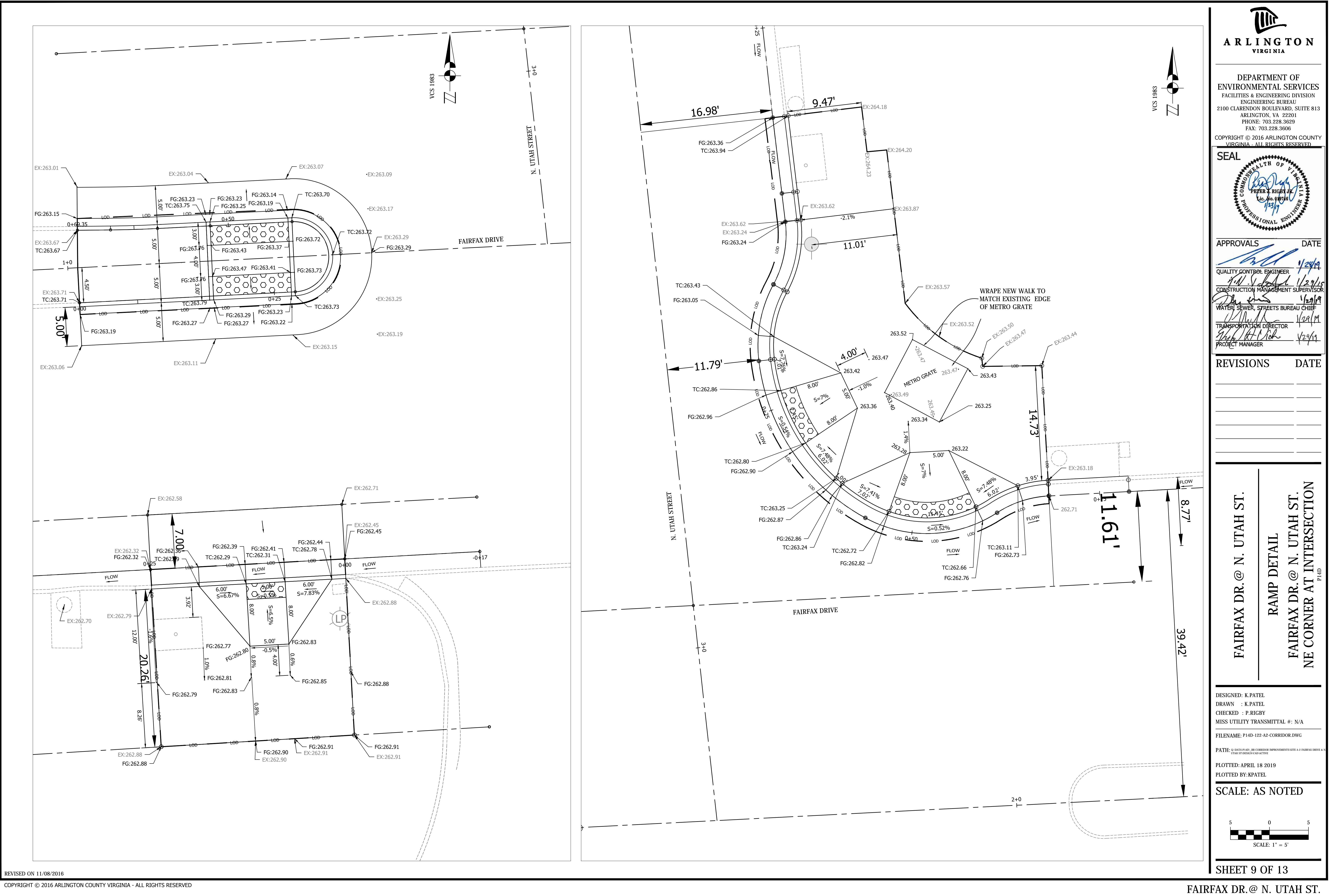
FAIRFAX DR. @ N. UTAH ST.

PLAN AND PROFILE
FAIRFAX DR. @ N. UTAH ST.
NE CORNER AT INTERSECTION

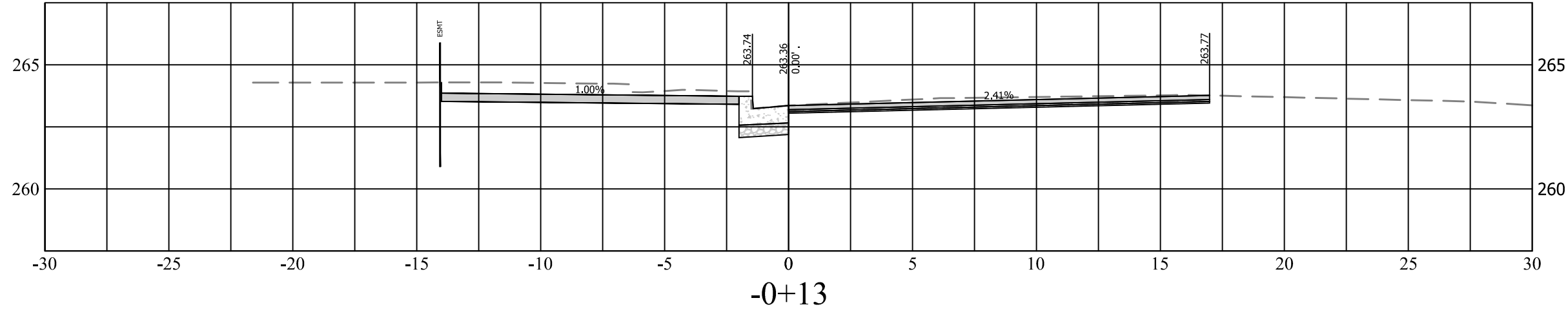
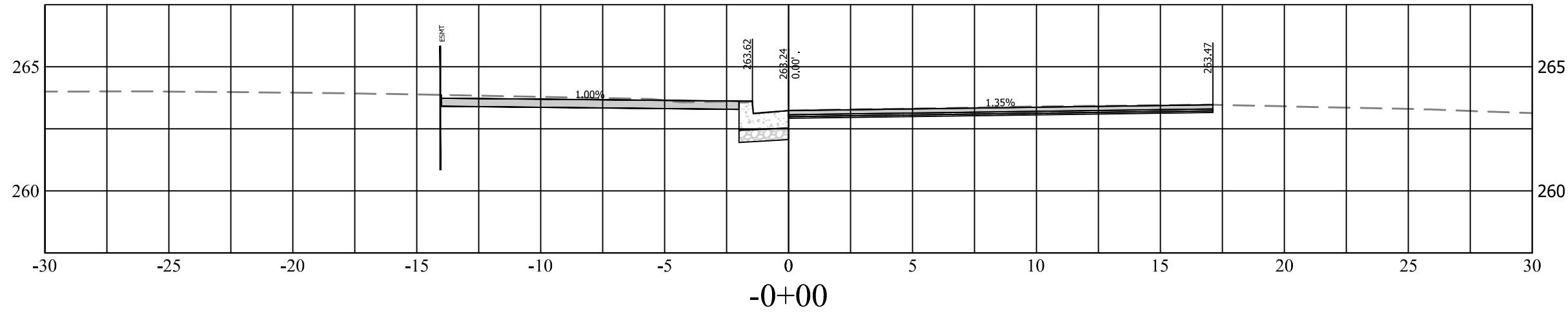
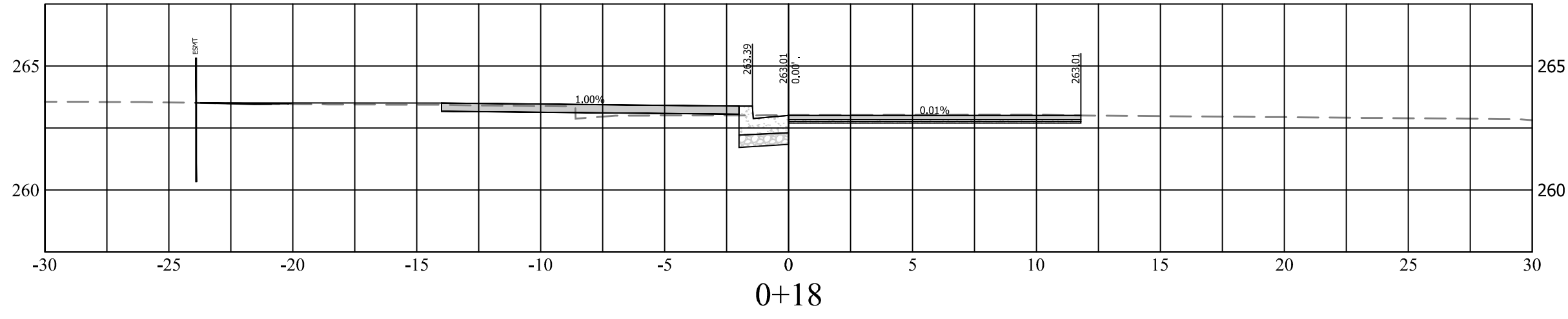
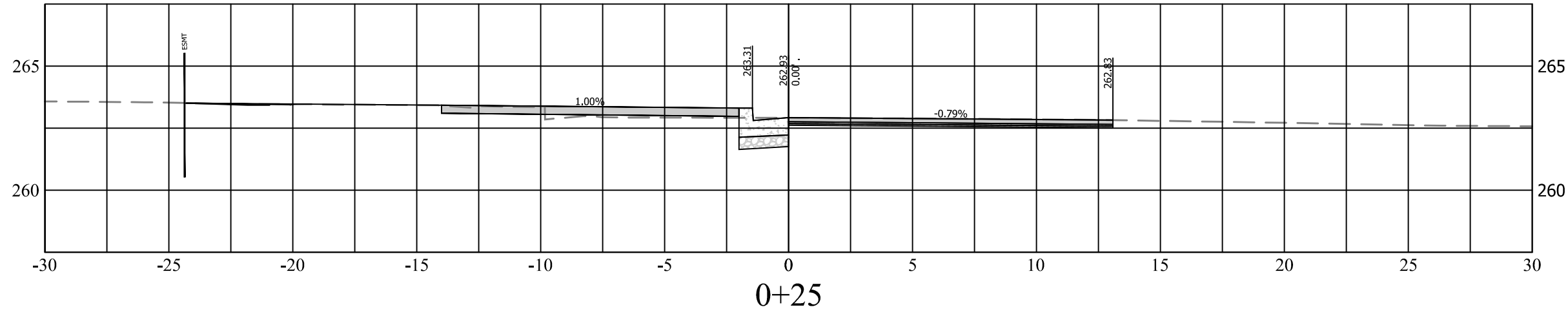
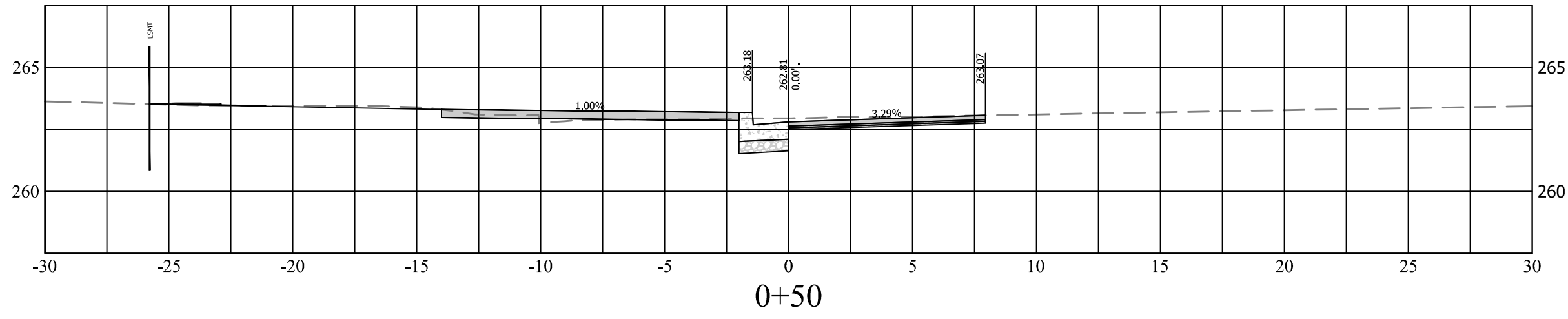
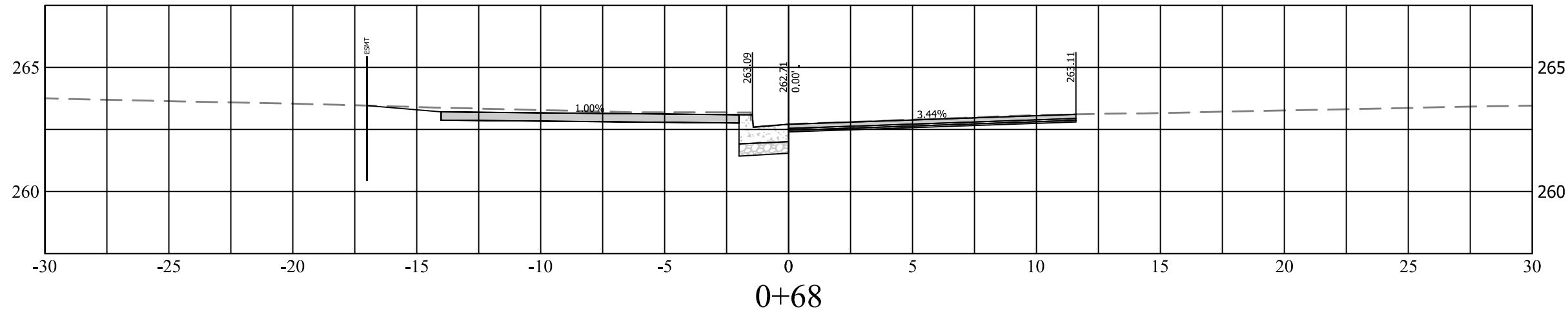
DESIGNED: K.PATEL
DRAWN : K.PATEL
CHECKED : P.RIGBY
MISS UTILITY TRANSMITTAL #: N/A
FILENAME: P14D-122-A2 CORRIDOR.DWG
PATH: Q:\DATA\PLANS\AR CORRIDOR IMPROVEMENTS\SITE 2 FAIRFAX DRIVE & N UTAH ST\DESIGN\CA\ACTIVE
PLOTTED: APRIL 18 2019
PLOTTED BY: K.PATEL

SCALE: GRAPHIC SCALE





BL EOP STATIONING



NOTE:
CROSS SECTIONS BASED ON PROPOSED BL EOP
STATIONING



DEPARTMENT OF
ENVIRONMENTAL SERVICES
FACILITIES & ENGINEERING DIVISION
ENGINEERING BUREAU
2100 CLARENDON BOULEVARD, SUITE 813
ARLINGTON, VA 22201
PHONE: 703.228.3629
FAX: 703.228.3606

COPYRIGHT © 2016 ARLINGTON COUNTY
VIRGINIA - ALL RIGHTS RESERVED

SEAL

APPROVALS DATE

QUALITY CONTROL ENGINEER

1/29/19

CONSTRUCTION MANAGEMENT SUPERVISOR

1/29/19

WATER, SEWER, STREETS BUREAU CHIEF

1/29/19

TRANSPORTATION DIRECTOR

1/29/19

PROJECT MANAGER

1/29/19

REVISIONS	DATE

FAIRFAX DR. @ N. UTAH ST.

CROSS SECTIONS

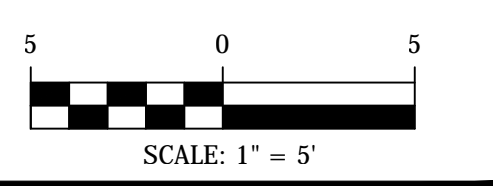
FAIRFAX DR. @ N. UTAH ST.

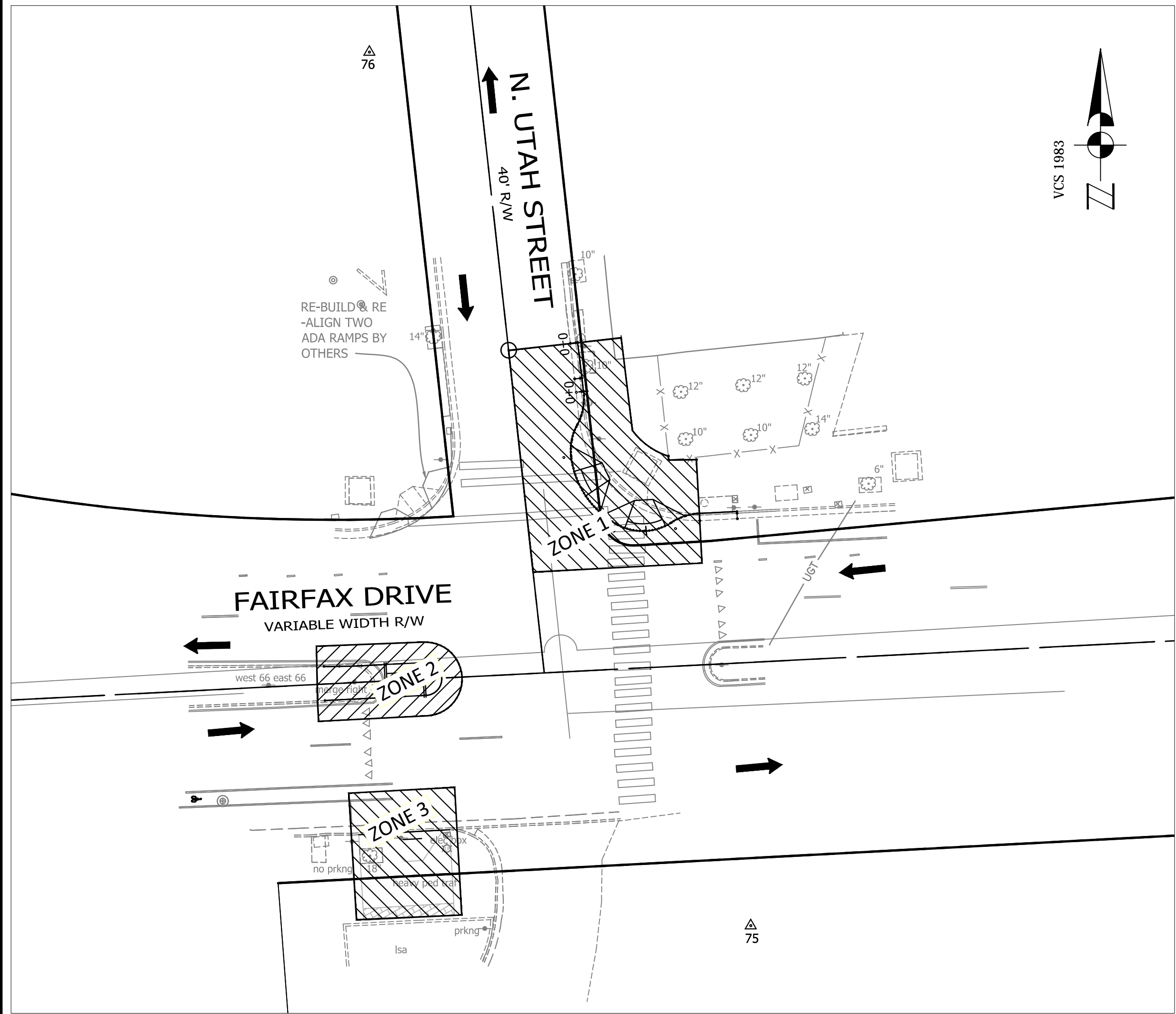
NE CORNER AT INTERSECTION

P14D

DESIGNED: K.PATEL
DRAWN : K.PATEL
CHECKED : P.RIGBY
MISS UTILITY TRANSMITTAL #: N/A
FILENAME: P14D-122-A2-CORRIDOR.DWG
PATH: C:\DATA\PLANS\2016 CORRIDOR IMPROVEMENTS\SITE A-2 FAIRFAX DRIVE & N UTAH ST\DESIGN\CAO\ACTIVE
PLOTTED: APRIL 18 2019
PLOTTED BY: K.PATEL

SCALE: AS NOTED





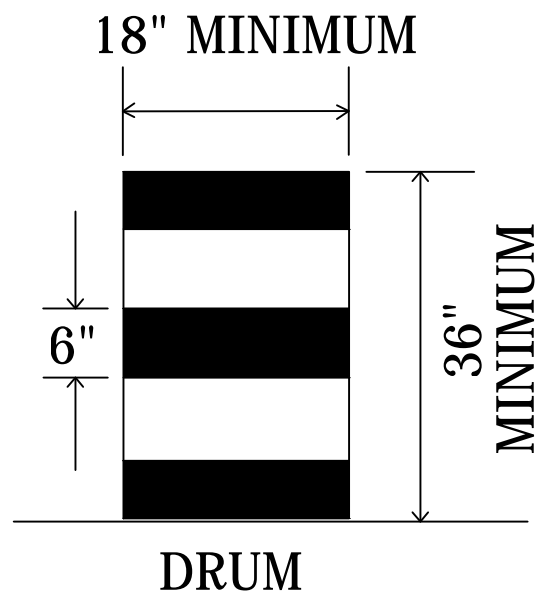
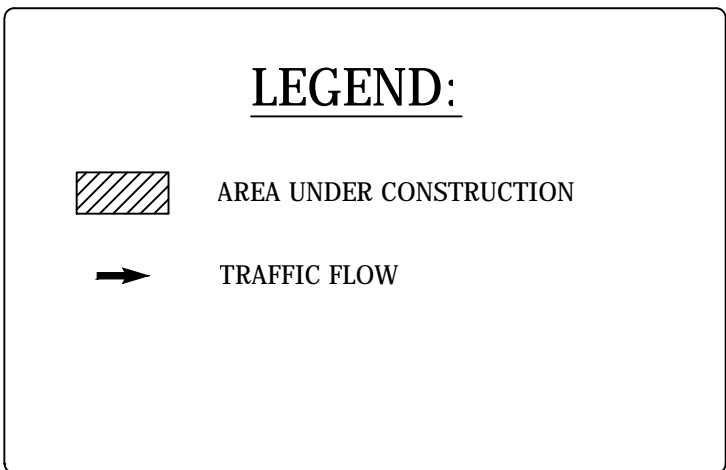
ZONE#	TTC#	ZONE TABLE	DURATION
ZONE 1 & ZONE 3	TTC-16.1	OUTSIDE LANE CLOSER OPERATION ON A FOUR LANE ROADWAY	MONTH
	TTC-28.1	LANE CLOSER OPERATION- IN AN INTERSECTION	
	TTC-36.1	CROSSWALK CLOSER AND PEDESTRAIN DETOUR OPERATION	
ZONE 2	TTC-16.1	OUTSIDE LANE CLOSER OPERATION ON A FOUR LANE ROADWAY	ONE WEEK
	TTC-26.1	LANE CLOSER OPERATION- NEAR SIDE OF AN INTERSECTION	
	TTC-36.1	CROSSWALK CLOSER AND PEDESTRAIN DETOUR OPERATION	

NOTE:
THE DURATIONS SHOWN WERE DEVELOPED FOR PLANNING AND ESTIMATION PURPOSES ONLY. THE DURATIONS IN NO WAY ALTER THE CONTRACT TIME FOR COMPLETION, OR INFRINGES ON THE CONTRACTORS MEANS AND METHODS. THE CONTRACTOR'S SUBMITTED SCHEDULE SUPERSEDES THE ESTIMATED DURATIONS SHOWN.

RESTRICTIONS ON CONCURRENT WORK AREAS:

THE CONTRACTOR MAY CHOOSE THE OPTIMAL SEQUENCE FOR THEM, BUT THE DESIGNER WILL DICTATE WHICH WORK AREA CAN AND CANNOT BE CLOSED SIMULTANEOUSLY.

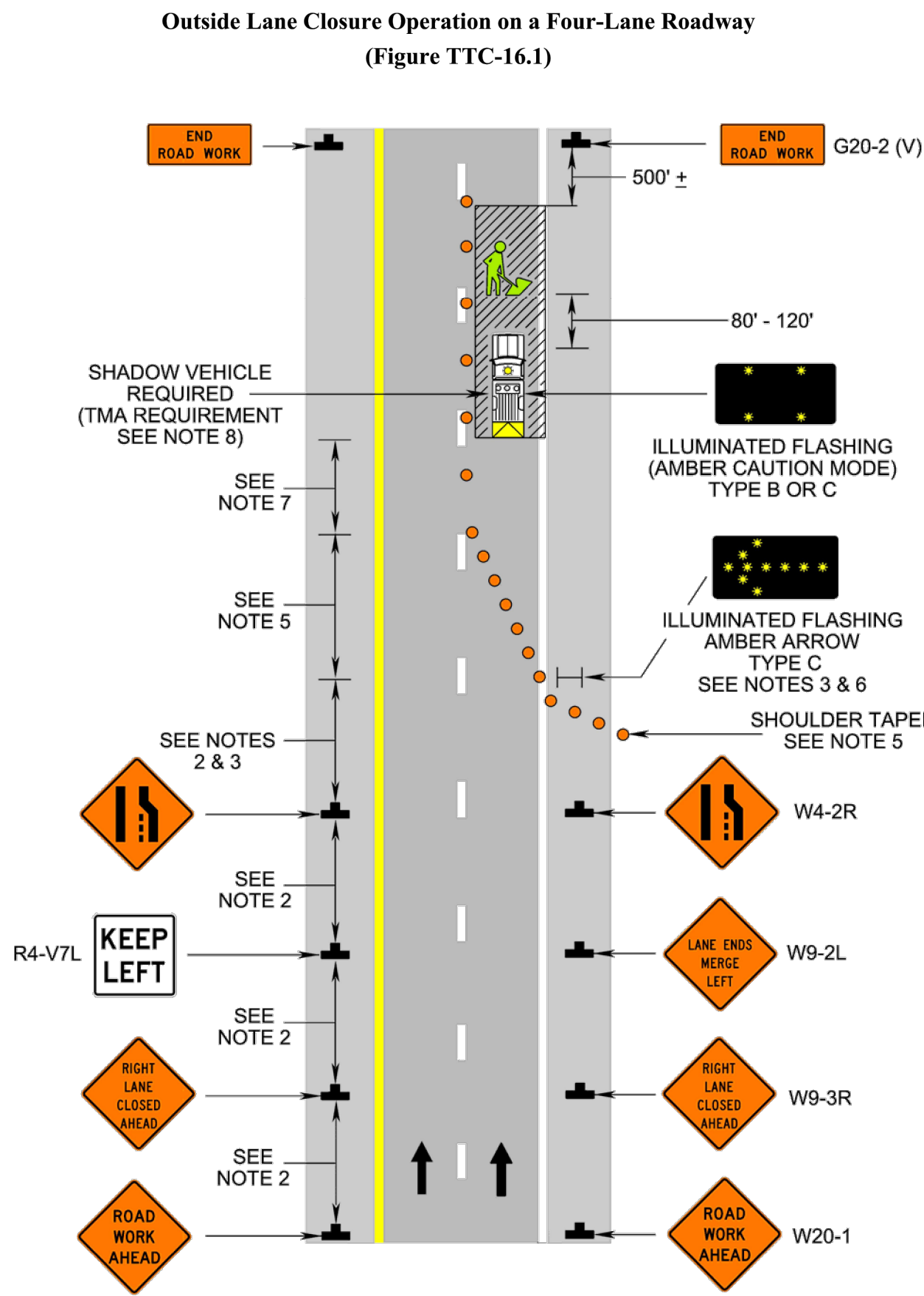
- NOTES:
- WARNING SIGN SPACING : 100'
 - CHANNELIZATION DEVICES SPACING FOR TRANSITION AREAS = 20'



- NOTES:
- DRUM SPACING IS 20 FEET ON TRANSITIONS AND CURVES.
 - DRUM SPACING PARALLEL TO THE TRAVEL WAY IS 40 FEET.

April 2015

Page 6H-39



Page 6H-38

April 2015

Typical Traffic Control
Outside Lane Closure Operation on a Four-Lane Roadway
(Figure TTC-16.1)
NOTES

- Standard:
- On divided highways having a median wider than 8', right and left sign assemblies shall be required.
- Guidance:
- Sign spacing should be 1300'-1500' for Limited Access highways. For all other roadways, the sign spacing should be 500'-800' where the posted speed limit is greater than 45 mph, and 350'-500' where the posted speed limit is 45 mph or less.
 - Care should be exercised when establishing the limits of the work zone to insure maximum possible sight distance in advance of the transition, based on the posted speed limit and at least equal to or greater than the values in Table 6H-3. For Limited Access highways a minimum of 1000' is desired.
 - All vehicles, equipment, workers, and their activities should be restricted to one side of the pavement.
- Standard:
- Taper Length (L) and Channelizing Device Spacing shall be:

Speed Limit (mph)	Taper Length (L)			
	9	10	11	12
25	95	105	115	125
30	135	150	165	180
35	185	205	225	245
40	240	270	295	320
45	405	450	495	540
50	450	500	550	600
55	495	550	605	660
60	540	600	660	720
65	585	650	715	780
70	630	700	770	840
Minimum taper lengths for Limited Access highways shall be 1000 feet.				
Shoulder Taper = 1/2 L Minimum				

Location	Channelizing Device Spacing	
	Speed Limit (mph)	
	0 - 35	36 +
Transition Spacing	20'	40'
Travelway Spacing	40'	80'
Construction Access*	80'	120'

* Spacing may be increased to this distance, but shall not exceed one access per 1/4 mile.

On roadways with paved shoulders having a width of 8 feet or more, channelizing devices shall be used to close the shoulder in advance of the merging taper to direct vehicular traffic to remain within the traveled way.

- An arrow board shall be used when a lane is closed. When more than one lane is closed, a separate arrow board shall be used for each closed lane (see Figure TTC-18).
- The buffer space length shall be shown in Table 6H-3 on Page 6H-5 for the posted speed limit.
- A shadow vehicle with either a Type B or C arrow board operating in the caution mode, or at least one high intensity amber rotating, flashing, or oscillating light shall be parked 80'-120' in advance of the first work crew. When the posted speed limit is 45 mph or greater, a truck-mounted attenuator shall be used.
- Vehicle hazard warning signals shall not be used instead of the vehicle's high-intensity amber rotating, flashing, or oscillating lights but can be used to supplement the amber rotating, flashing, or oscillating lights.
- When a side road intersects the highway within the TTC zone, additional TTC devices shall be placed as needed.

1: Revision 1 - 4/1/2015

WORKING HOURS:

- IN ARLINGTON RIGHT-OF-WAY: 9:30 AM TO 3:00 PM (MON.-THUR.) AND 9:30 AM TO 2:00PM (FRIDAY)
- ALL LANES SHALL BE FULLY OPEN TO TRAFFIC OUTSIDE THE ABOVE HOURS UNLESS SPECIFIED OTHERWISE IN THE MAINTENANCE OF TRAFFIC PLANS.

MOT NOTES:

- TRAFFIC CONTROL DEVICES AND SAFETY MEASURES SHALL COMPLY WITH THE VIRGINIA WORK AREA PROTECTION MANUAL, VDOT'S GUIDELINES FOR TEMPORARY TRAFFIC CONTROL, FEDERAL HIGHWAY ADMINISTRATION MANUAL ON UNIFORM TRAFFIC CONTROL DEVICES, ARLINGTON COUNTY STANDARDS, THE TRAFFIC CONTROL PLANS INCLUDED IN THE CONSTRUCTION DRAWINGS, AND/OR AS DIRECTED BY THE PROJECT OFFICER.
- THE CONTRACTOR SHALL SUBMIT A DETAILED SCHEDULE WHICH INDICATES START AND FINISH DATES FOR EACH SEGMENT OF THE WORK. THE SCHEDULE SHALL INDICATE THE DURATION OF ALL LANE OR SHOULDER CLOSURES. THE CONTRACTOR SHALL NOTIFY THE PROJECT OFFICER A MINIMUM OF 3 BUSINESS DAYS IN ADVANCE OF PROCEEDING TO THE NEXT WORK SEGMENT.
- THE CONTRACTOR SHALL NOTIFY THE PROJECT OFFICER OF PARKING RESTRICTION NEEDS A MINIMUM OF 3 BUSINESS DAYS PRIOR TO COMMENCEMENT OF WORK FOR EACH SEGMENT. COUNTY PROJECT OFFICER SHALL RESTRICT PARKING BY CONTACTING DES - PERMITTING SECTION, 703-228-4798.
- DURING CONSTRUCTION, THE CONTRACTOR SHALL EITHER MAINTAIN APPROPRIATE SIGHT DISTANCE TO ALL TRAFFIC SIGNS OR PROVIDE FOR TEMPORARY SIGNAGE OR FLAGGERS TO GUIDE TRAFFIC THROUGH WORK ZONES.
- THE CONTRACTOR SHALL MINIMIZE THE DURATION OF ANY BLOCKAGE TO PRIVATE ENTRANCES AND DRIVEWAYS. THE CONTRACTOR SHALL SUBMIT A SCHEDULE OF DRIVEWAY CLOSURE FOR APPROVAL BY THE PROJECT OFFICER. THE PROJECT OFFICER SHALL BE NOTIFIED A MINIMUM OF 3 BUSINESS DAYS IN ADVANCE OF SUCH ACTIVITIES. THE CONTRACTOR SHALL NOTIFY THE PROPERTY OWNER AT LEAST 24 HOURS IN ADVANCE OF THE START OF ANY WORK THAT WILL REQUIRE TEMPORARY CLOSURE OF ACCESS TO THE PROPERTY. THE CONTRACTOR SHALL MAKE ALL PRIVATE ENTRANCES AND DRIVEWAYS ACCESSIBLE AT THE CONCLUSION OF EACH WORKDAY.
- ANY EXCAVATIONS WHICH ARE SPECIFICALLY APPROVED BY THE PROJECT OFFICER TO REMAIN OPEN PAST NORMAL WORKING HOURS SHALL BE THE RESPONSIBILITY OF THE CONTRACTOR AND SHALL BE PROTECTED IN ACCORDANCE WITH THE VIRGINIA WORK AREA PROTECTION MANUAL AND AS APPROVED BY THE PROJECT OFFICER.
- PEDESTRIAN TRAFFIC SHALL BE MAINTAINED AT ALL TIMES, INCLUDING ACCESS TO BUS STOP SHELTERS, UNLESS OTHERWISE APPROVED IN THE PLANS.
- PEDESTRIAN TRAFFIC SHALL BE SEPARATED FROM WORK ZONES WITH APPROPRIATE MEASURES IN ACCORDANCE WITH MUTCD.
- ADEQUATE PROVISIONS FOR PERSONS WITH DISABILITIES SHALL BE PROVIDED AT ALL TIMES PER ADA REQUIREMENTS.
- WHEN NECESSARY, PEDESTRIANS SHALL BE APPROPRIATELY DIRECTED WITH ADVANCED WARNING SIGNS PLACED AT INTERSECTIONS, TO CROSS TO THE OPPOSITE SIDE OF THE ROADWAY IN ORDER TO PREVENT CONFLICT WITH MIDBLOCK WORK SITES.
- PEDESTRIANS SHALL NOT BE LED INTO CONFLICT WITH WORK SITE EQUIPMENT, OPERATIONS, AND/OR VEHICLES MOVING THROUGH OR AROUND THE WORK SITE.
- ALL EXISTING FIRE HYDRANTS AND FIRE DEPARTMENT CONNECTIONS SHALL BE MAINTAINED UNOBSTRUCTED AND ACCESSIBLE AT ALL TIMES IN ACCORDANCE WITH SECTIONS 508.5.4 AND 508.5.5 OF THE ARLINGTON COUNTY FIRE PREVENTION CODE.
- ACCESS TO BUILDINGS FOR FIREFIGHTING SHALL BE MAINTAINED AT ALL TIMES. EXISTING FIRE APPARATUS ACCESS ROADS (FIRE LANES) SHALL BE KEPT CLEAR OF OBSTRUCTIONS IN ACCORDANCE WITH SECTION 503.4 OF THE ARLINGTON COUNTY FIRE PREVENTION CODE. ACCESS TO CONSTRUCTION SITES SHALL BE PROVIDED AND MAINTAINED IN ACCORDANCE WITH SECTION 1410 OF THE ARLINGTON COUNTY FIRE PREVENTION CODE.
- IN THE EVENT THAT EXISTING FIRE DEPARTMENT CONNECTIONS OR FIRE APPARATUS ACCESS ROADS (FIRE LANES) MUST BE OBSTRUCTED TO FACILITATE CONSTRUCTION ACTIVITIES, CONTACT THE ARLINGTON COUNTY FIRED DEPARTMENT FIRE PREVENTION OFFICE AT 703-228-4644 TO COORDINATE REVIEW AND APPROVAL OF TEMPORARY FIRE DEPARTMENT CONNECTIONS AND/OR FIRE APPARATUS ACCESS ROADS PRIOR TO CREATING THE OBSTRUCTION.
- VEHICLE DETECTION AT ALL TIMES DURING THE PROJECT. TRAFFIC SENSORS SHALL BE RESTORED TO THEIR PRE-CONSTRUCTION STATE PRIOR TO THE COMPLETION OF THIS PROJECT.
- WORK HOURS ARE RESTRICTED TO 9:30 AM TO 3:00 PM (MON.-THUR.) & 9:30AM TO 2:00 PM (FRIDAY)
- CONTRACTOR SHALL COVER ANY EXISTING SIGNS WHICH ARE NOT APPLICABLE OR ARE IN CONFLICT WITH THIS MOT PLAN.
- CONTRACTOR SHALL ERADICATE AND RE-STRIPE AS NECESSARY ANY EXISTING PAVEMENT MARKINGS THAT ARE AM CONFLICT OR DO NOT ALIGN WITH THE TEMPORARY PAVEMENT MARKINGS OR NEW TRAFFIC PATTERNS.
- CONTRACTOR SHALL ERADICATE ALL TEMPORARY PAVEMENT MARKING, INCLUDING TEMPORARY MARKED CROSSWALKS ONCE THE WORK AREA(S) ASSOCIATED WITH THE MARKINGS HAS BEEN COMPLETED.
- CONTRACTOR SHALL COORDINATE WITH ARLINGTON COUNTY TRANSIT AT 703-228-3049, AT LEAST FOUR (4) WEEKS PRIOR TO COMMENCEMENT OF ALL WORK AFFECTING TRANSIT STOP OR ROUTES. ALL TEMPORARY AND FINAL BUS TRAVEL LANES MUST BE MINIMUM 11' WIDE.

APPROVALS DATE

QUALITY CONTROL ENGINEER 1/29/19
CONSTRUCTION MANAGEMENT SUPERVISOR 1/29/19
WATER, SEWER, STREETS BUREAU CHIEF 1/29/19
TRANSPORTATION DIRECTOR 1/29/19
PROJECT MANAGER 1/29/19

REVISIONS DATE

FAIRFAX DR. @ N. UTAH ST.

MOT_PLAN 1
FAIRFAX DR. @ N. UTAH ST.
NE CORNER AT INTERSECTION
P14D

DESIGNED: K.PATEL
DRAWN : K.PATEL
CHECKED : P.RIGBY
MISS UTILITY TRANSMITTAL #: N/A

FILENAME: P14D-A-2-286-MOT.DWG

PATH: Q:\DATA\P14D-_B1 CORRIDOR IMPROVEMENTS\SITE 2 & FAIRFAX DRIVE & N UTAH ST\DESIGN\CAD\ACTIVE

PLOTTED: APRIL 18 2019
PLOTTED BY: KPATEL

SCALE: AS NOTED

