

# CITY OF GOODLETTSVILLE DAVIDSON COUNTY, TENNESSEE

## CITY OF GOODLETTSVILLE

JOHN COOMBS  
•MAYOR•

JEFF DUNCAN  
•VICE MAYOR•

HARRY BELL  
RUSTY TINNIN  
ZACH YOUNG  
•COMMISSIONERS•

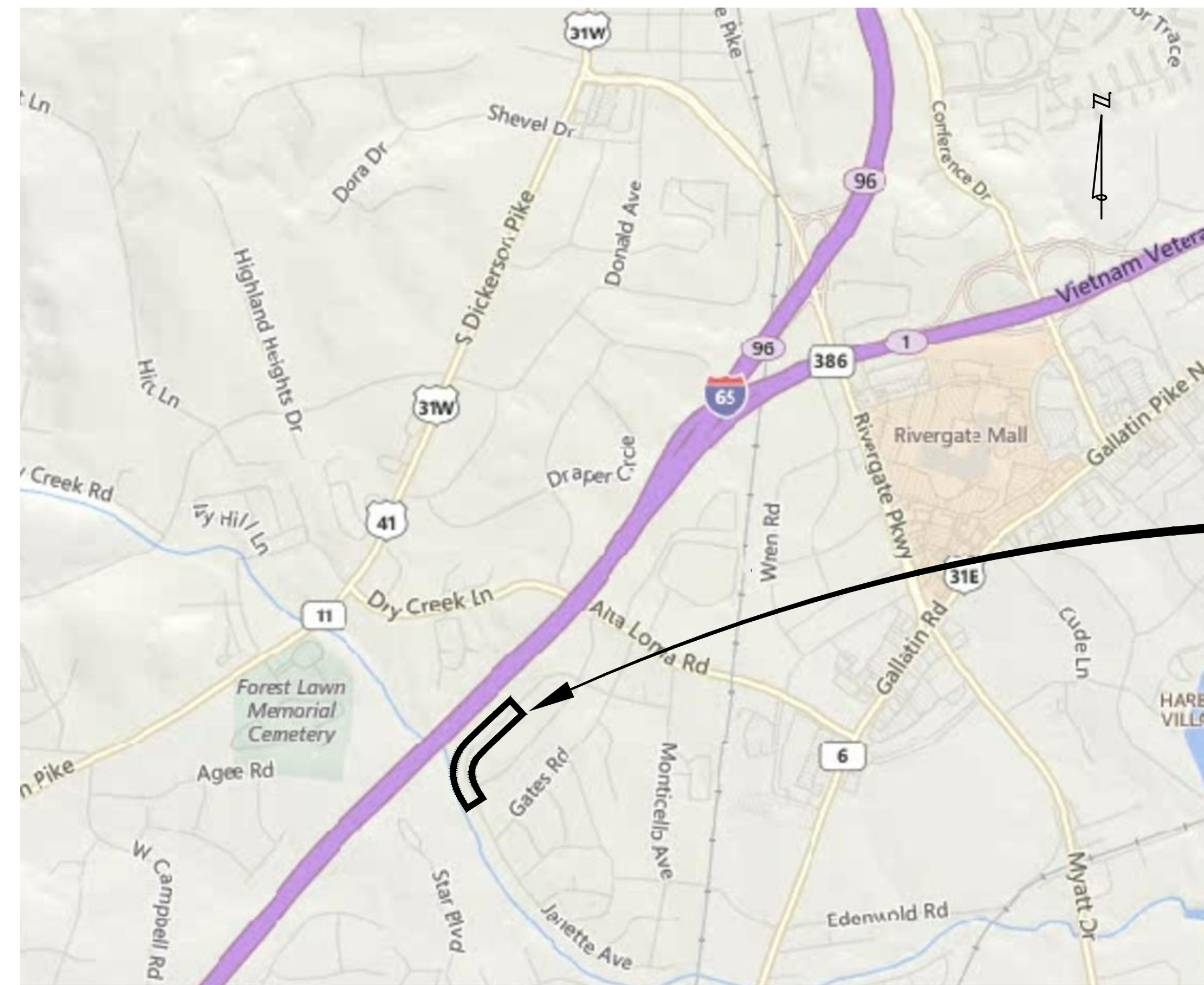
TIM ELLIS  
•CITY MANAGER•

JULIE HIGH  
• ASSISTANT CITY MANAGER / •  
FINANCE & ADMIN SVCS DIRECTOR

ELIZABETH SIMPSON  
•CITY CLERK•

## JANETTE AVE. STORM WATER IMPROVEMENTS

INDEX OF SHEETS	
SHEET NO.	DESCRIPTION
1	COVER SHEET
2	GENERAL NOTES
3	LEGEND
4	TYPICAL SECTIONS
5	STANDARD DETAIL
6	REMOVAL PLAN
7-9	CONSTRUCTION PLAN
10	EPSC



PROJECT LOCATION

LOCATION MAP  
N.T.S.

UTILITY PROVIDERS	
<b>SANITARY SEWER</b> METRO WATER SERVICES 800 2ND AVENUE SOUTH NASHVILLE, TENNESSEE 37210 615.862.4600 (OFFICE)	<b>ELECTRICITY</b> NASHVILLE ELECTRIC SERVICE 1214 CHURCH STREET NASHVILLE, TENNESSEE 37246 615.736.6900 (OFFICE)
<b>NATURAL GAS</b> PIEDMONT NATURAL GAS 511 8TH STREET NASHVILLE, TENNESSEE 37206 615.872.8034	<b>TELEPHONE</b> AT&T 333 COMMERCE STREET NASHVILLE, TENNESSEE 37201 615.214.6525 (OFFICE)
<b>WATER</b> MADISON SUBURBAN UTILITY DISTRICT 108 WEST WEBSTER MADISON, TENNESSEE 37115 615.868.3201 CONTACT: KENNETH TURNER	<b>CABLE</b> COMCAST CABLE COMMUNICATIONS 2400 FRANKLIN PIKE NASHVILLE, TENNESSEE 37204 800.266.2278 (OFFICE)

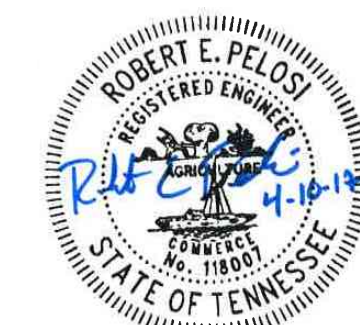
CONTRACT FOR:  
DRAINAGE IMPROVEMENTS INCLUDING INSTALLATION OF STORM SEWER, CATCH BASINS,  
AND PAVEMENT REMOVAL AND REPLACEMENT.



Advancing Communities

209 10th Avenue South | Nashville, TN 37203  
p (615) 649-5264

PREPARED UNDER THE SUPERVISION OF:



118007  
Registration No.

ROBERT E. PELOSI, PE

4/7/2017  
Date

REVISIONS

PROJECT NO.	SHEET NO.
1079-16-0010	1 OF 10



## GENERAL

NO WORK SHALL BE PERFORMED WITHOUT INSPECTION BY THE CITY OR ITS DESIGNATED REPRESENTATIVES.

LIMITATIONS ON PRIVATE WORK: DURING CONSTRUCTION OPERATIONS, THE CONTRACTOR SHALL NOT PERFORM WORK BY PRIVATE AGREEMENT WITH PROPERTY OWNERS ADJACENT TO THE PROJECT.

THE CONTRACTOR SHALL CONDUCT HIS/HER OPERATIONS IN SUCH A MANNER TO COMPLY WITH ALL FEDERAL, STATE, AND LOCAL CODES FOR NOISE LEVELS, VIBRATIONS, OR ANY OTHER RESTRICTIONS WHILE REMOVING PAVEMENT OR FOR ANY OTHER CONSTRUCTION OPERATIONS WITHIN THIS CONTRACT TO BE INCLUDED IN THE RESPECTIVE ITEM OF WORK.

THE CONTRACTOR SHALL BE REQUIRED TO NOTIFY THE CITY OF GOODLETTSVILLE PUBLIC WORKS DEPT. 72 HOURS IN ADVANCE OF PROPOSED CONSTRUCTION.

THE CONTRACTOR SHALL NOTIFY THE HOMEOWNER OF TEMPORARY DRIVEWAY CLOSURE PRIOR TO CONSTRUCTION.

ALL SALVAGED MATERIAL, INCLUDING EXCESS EXCAVATED MATERIAL, IS TO BECOME PROPERTY OF THE CONTRACTOR. ANY OFFSITE DISPOSAL SHALL BE IN CONFORMANCE WITH ALL LOCAL RULES AND REGULATIONS.

ABSOLUTELY NO EXPLOSIVES ARE TO BE USED FOR EXCAVATION ACTIVITIES.

## TREE PRESERVATION

EXISTING TREES ARE NOT TO BE REMOVED UNLESS AUTHORIZED BY THE CITY OR THE ENGINEER.

TREES REMOVED BY THE CONTRACTOR THAT WERE NOT INTENDED FOR REMOVAL SHALL BE REPLACED AT THE CONTRACTOR'S EXPENSE. REPLACEMENT PLANTINGS SHALL BE OF A SIMILAR SPECIES AND THE QUANTITY SHALL BE SUCH THAT THE TOTAL DIAMETER IS EQUAL TO THE DIAMETER OF REMOVED TREES.

## EXISTING UNDERGROUND PUBLIC UTILITIES

THE CONTRACTOR WILL BE RESPONSIBLE FOR ANY DAMAGE TO EXISTING WATER MAINS, SEWER MAINS, AND EXISTING UTILITY LEADS DURING THE CONSTRUCTION OF THIS PROJECT.

THE EXISTING UTILITIES LISTED BELOW AND SHOWN ON THESE PLANS REPRESENT THE BEST INFORMATION AVAILABLE AS OBTAINED FROM EXISTING PLANS AND UTILITY RECORDS. THIS INFORMATION DOES NOT RELIEVE THE CONTRACTOR OF THE RESPONSIBILITY TO VERIFY THE ACTUAL LOCATION OF EXISTING UTILITIES.

## UTILITIES

- |  |   |
|--|---|
| 1. <b>ELECTRIC:</b><br>NASHVILLE ELECTRIC SERVICE<br>1214 CHURCH STREET<br>NASHVILLE, TENNESSEE 37246<br>615.736.9000 (OFFICE) | 4. <b>CABLE:</b><br>COMCAST CABLE COMMUNICATIONS<br>2400 FRANKLIN PIKE<br>NASHVILLE, TENNESSEE 37204<br>800.266.2278 (OFFICE) |
| 2. <b>NATURAL GAS:</b><br>PIEDMONT NATURAL GAS<br>511 8TH STREET<br>NASHVILLE, TENNESSEE 37206<br>615.872.8034                 | 5. <b>TELEPHONE:</b><br>AT&T<br>333 COMMERCE STREET<br>NASHVILLE, TENNESSEE 37201<br>615.214.6525 (OFFICE)                    |
| 3. <b>SEWER:</b><br>METRO WATER SERVICES<br>800 2ND AVENUE SOUTH<br>NASHVILLE, TENNESSEE 37210<br>615.862.4600 (OFFICE)        | 6. <b>WATER:</b><br>MADISON SUBURBAN UTILITY DISTRICT<br>108 WEST WEBSTER<br>MADISON, TENNESSEE 37115<br>615.868.3201         |

FOR PROTECTION OF UNDERGROUND UTILITIES, THE CONTRACTOR SHALL DIAL 811 A MINIMUM OF 3 WORKING DAYS PRIOR TO EACH EXCAVATION IN THE VICINITY OF UTILITY LINES. ALL "TENN811" PARTICIPATING MEMBERS WILL THUS BE ROUTINELY NOTIFIED. THIS DOES NOT RELIEVE THE CONTRACTOR OF THE RESPONSIBILITY OF NOTIFYING UTILITY OWNERS WHO MAY NOT BE PART OF THE "TENN811" ALERT SYSTEM.

THE OWNERS OF EXISTING UTILITY POLES AND OTHER SERVICE STRUCTURES THAT ARE WITHIN GRADING LIMITS AND THAT ARE IDENTIFIED TO BE RELOCATED WILL BE MOVED TO LOCATIONS DESIGNATED BY THE ENGINEER/OWNER.

OWNERS OF PUBLIC UTILITIES WILL NOT BE REQUIRED TO MOVE ADDITIONAL POLES AND STRUCTURES THAT ARE NOT WITHIN GRADING OR STRUCTURE LIMITS IN ORDER TO FACILITATE THE OPERATION OF CONSTRUCTION EQUIPMENT UNLESS IT IS DETERMINED BY THE ENGINEER THAT SUCH POLE LINE OR STRUCTURES CONSTITUTE A HAZARD TO THE PUBLIC OR ARE EXTRAORDINARILY DANGEROUS TO THE CONTRACTOR'S OPERATIONS.

THE CONTRACTOR IS RESPONSIBLE FOR ALL DAMAGE TO EXISTING UTILITIES.

ALL EXPLORATORY WORK REQUIRED FOR LOCATING EXISTING UTILITIES SHALL NOT BE PAID FOR SEPARATELY EXCEPT AS SHOWN OR DIRECTED BY THE ENGINEER.

THE CONTRACTOR SHALL BE AWARE OF AND USE CAUTION WHEN WORKING NEAR UNDERGROUND OR OVERHEAD POWER LINES, TELEPHONE LINES, GAS LINES, WATER AND SEWER FACILITIES.

## PLAN COORDINATES & ELEVATION

HORIZONTAL COORDINATES ARE TENNESSEE STATE PLANE (NAD 83).

ELEVATIONS SHOWN ON THESE PLANS ARE ON THE 1988 NAVD DATUM.

## PAVEMENT REMOVAL

PAVEMENT REMOVAL AREAS ARE SHOWN ON THE PLANS, HOWEVER ACTUAL REMOVAL SHALL BE AT THE DISCRETION OF THE ENGINEER AS TO WHETHER OR NOT AREAS OF PAVEMENT MAY BE LEFT IN PLACE, OR ADDITIONAL AREAS ADDED, TO ACHIEVE THE GOALS OF THE PROJECT.

SAWING FOR PAVEMENT REMOVAL AS SHOWN ON THE PLANS OR AS DIRECTED BY THE ENGINEER, TO THE DEPTH REQUIRED FOR NEAT REMOVAL OF PAVEMENT OR CURB. SHALL BE INCLUDED IN THE ITEM OF REMOVAL. SAWING DEPTH SHALL BE ADEQUATE TO PREVENT SPALLING, CHIPPING, OR DAMAGE TO EXISTING PAVEMENT EDGES LEFT IN PLACE AS DIRECTED BY THE ENGINEER.

## SIGNS

ALL SIGNS REQUIRING RELOCATION DUE TO CONSTRUCTION OPERATIONS SHALL BE SALVAGED AND RESET BY THE CONTRACTOR AT LOCATIONS DESIGNATED BY THE ENGINEER. THIS WORK WILL BE PERFORMED AT THE CONTRACTOR EXPENSE AS NO SIGNS ARE PLANNED FOR REMOVAL AND RELOCATION.

## SURFACE RESTORATION

DISTURBED AREAS SHALL BE RESTORED IN ACCORDANCE WITH THE PLANS AND SPECIFICATIONS AND AS DIRECTED BY THE ENGINEER. AREAS FOR TOPSOIL, SEED AND STRAW ARE AS INDICATED ON THE PLANS.

ALL AREAS DISTURBED BY THE CONTRACTOR AND/OR HIS SUBCONTRACTOR BEYOND THE TRENCH LIMITS OF THE PROJECT SHALL BE RESTORED AS DIRECTED BY THE ENGINEER. NO ADDITIONAL PAYMENT OR COMPENSATION SHALL BE MADE FOR THIS ACTIVITY.

## STORM SEWER

WHEN EXCAVATING FOR STORM SEWER OR UNDERDRAIN CONSTRUCTION IT SHALL BE THE CONTRACTOR'S RESPONSIBILITY TO:

BEFORE EACH DAY'S WORK, OR WHEN MOVING TO A NEW AREA OF WORK, DETERMINE AND EVALUATE THE LOCATION OF ALL UNDERGROUND FACILITIES IN THE AREA. IF LOCATION STAKES HAVE BEEN REMOVED OR DO NOT APPEAR CORRECT, THE CONTRACTOR SHALL NOT EXCAVATE UNTIL ALL UTILITIES HAVE HAD AN OPPORTUNITY TO CHECK THEIR LOCATIONS. ANY DELAYS INCURRED, DUE TO CHECKING OR RESTAKING OF UTILITIES SHALL NOT BE A BASIS FOR ADDITIONAL COMPENSATION.

ALL SEWER TRENCHES SHALL BE BACKFILLED OR BARRICADED OVERNIGHT AS DIRECTED BY THE ENGINEER. SUCH WORK SHALL BE INCLUDED IN THE COST OF THE STORM SEWER CONSTRUCTION.

WHEN EXCAVATING FOR STORM SEWER CONSTRUCTION, THE CONTRACTOR SHALL TAKE ALL NECESSARY PRECAUTIONS TO PROTECT THE EXISTING GAS, ELECTRIC, WATER AND SANITARY SEWER FACILITIES, BY THE USE OF SHEETING OR OTHER METHODS AS APPROVED BY THE ENGINEER, THIS WORK SHALL BE INCLUDED IN THE PAY ITEMS FOR STORM SEWER CONSTRUCTION.

FINAL ADJUSTMENTS OF ALL STRUCTURES BOTH NEW AND EXISTING SHALL BE MADE PRIOR TO PLACING THE FINAL SURFACE COURSE OF HMA.

## PERMITS

THE CONTRACTOR IS REQUIRED TO OBTAIN A LAND DISTURBANCE PERMIT FROM THE CITY OF GOODLETTSVILLE PRIOR TO CONSTRUCTION.

## DUST CONTROL

ALL HAUL ROADS, DETOUR ROADS, TEMPORARY ACCESS ROADS, OTHER PUBLIC OR PRIVATE ROADS, DRIVEWAYS, AND PARKING LOTS USED BY THE CONTRACTOR MUST BE MAINTAINED IN A DUST-FREE CONDITION FOR THE DURATION OF THE CONTRACT. THE CONTROL OF THE DUST SHALL BE ACCOMPLISHED BY APPLICATION OF DUST CONTROL MATERIALS AND METHODS OF APPLICATION AS APPROVED AND AS DIRECTED BY THE ENGINEER. SUCH DUST CONTROL MEASURES SHALL BE APPLIED AS OFTEN AS IS NECESSARY TO CONTROL DUST.

## UNDERGROUND CONFLICTS

THE CONTRACTOR SHALL EXPOSE EXISTING WATER MAIN, SANITARY SEWERS, AND PRIVATE UTILITY CROSSINGS AS SHOWN ON THE PLANS OR AS DIRECTED BY THE ENGINEER TO VERIFY EXISTING LOCATIONS AND ELEVATIONS BEFORE COMMENCING WORK ON A PROPOSED STORM SEWER. EACH EXCAVATION SHALL BE PAID FOR AS "EXPLORATORY EXCAVATION" (EACH). EXCAVATION FOR MULTIPLE POTENTIAL CONFLICTS WITHIN 10 FEET OF EACH OTHER WILL ONLY BE PAID FOR ONCE. EXPLORATORY EXCAVATIONS WILL ONLY BE ALLOWED WHERE SHOWN ON THE PLANS OR WHEN AUTHORIZED BY THE ENGINEER.

THE CONTRACTOR SHALL PRESERVE ALL EXISTING WATER SERVICE LEADS AND SEWER SERVICE LEADS TO THE EXTENT PRACTICAL UNLESS OTHERWISE SPECIFIED BY THE CITY ENGINEER.

## UTILITY CROSSINGS AT DRIVEWAYS

ALL UTILITY CROSSINGS AT DRIVEWAYS SHALL BE BACKFILLED IMMEDIATELY FOLLOWING PIPE INSTALLATION TO MAKE THESE DRIVEWAYS ACCESSIBLE. THIS WORK IS INCLUDED IN PIPE INSTALLATION.

## UTILITY TRENCH DEWATERING

THE COST OF ANY DEWATERING OPERATIONS REQUIRED TO INSTALL THE PROPOSED UTILITIES SHALL BE INCLUDED IN THE UNIT PRICE FOR THE AFFECTED UTILITY. DISCHARGE FROM ALL DEWATERING PUMPS MUST BE FILTERED THROUGH A FILTER BAG. COST FOR THE PROVIDING AND DISPOSING OF THE FILTER BAGS SHALL BE PAID INCLUDED IN THE UNIT PRICE FOR THE AFFECTED UTILITY. BAGS SHALL BE REPLACED WHEN THEY BECOME CLOGGED OR IF THEY BECOME DAMAGED.

## PAVING

HMA BOND AND/OR TACK COAT WILL NOT BE PAID FOR SEPARATELY BUT SHALL BE INCLUDED IN THE COST OF HMA PAY ITEMS.

## MISCELLANEOUS

ALL PROPERTY IRONS AND PROPERTY CORNERS DISTURBED OR DESTROYED BY THE CONTRACTOR'S OPERATIONS SHALL BE REPLACED BY A REGISTERED LAND SURVEYOR PROVIDED BY THE CONTRACTOR AT THE CONTRACTOR'S EXPENSE.

PROPERTY AND RIGHT-OF-WAY LINES ARE GENERALLY LOCATED AND FOR REFERENCE ONLY. NO RIGHT-OF-WAY SURVEY WAS PERFORMED.

## EARTHWORK & GRADING

ALL EROSION PREVENTION SEDIMENT CONTROL MEASURES SHALL BE IN ACCORDANCE WITH THE TENNESSEE DEPARTMENT OF ENVIRONMENT AND CONSERVATION. THE CONTRACTOR SHALL FOLLOW LOCAL RULES AND REGULATIONS FOR SOIL EROSION AND SEDIMENTATION CONTROL FOR ALL MATERIALS THAT ARE DISPOSED OF OFF THE PROJECT SITE.

ALL BACKFILL OUTSIDE OF ROADWAY, SHALL BE COMPACTED TO NOT LESS THAN 95 PERCENT OF MAXIMUM UNIT WEIGHT AS DETERMINED BY A STANDARD PROCTOR TEST.

ALL SURPLUS AND UNSUITABLE MATERIAL FROM EARTH EXCAVATION NOT ABLE TO BE INCORPORATED INTO THE PROJECT SHALL BECOME THE PROPERTY OF THE CONTRACTOR FOR PROPER DISPOSAL OFFSITE.

EXCAVATION: IT SHALL BE THE CONTRACTOR'S RESPONSIBILITY TO PROVIDE TEMPORARY STORAGE AREAS FOR EXCAVATION THAT THEY INTEND TO USE AS FILL MATERIAL IN OTHER AREAS.

THROUGHOUT THE PROJECT NO UNDERCUTS OR TRENCHES SHALL BE LEFT OPEN OR UNBACKFILLED DURING EACH NIGHT OR NON-WORKING HOURS THAT ARE WITHIN 10' OF THE EDGE OF THE TRAVELED WAY.

## TRAFFIC CONTROL

THE CONTRACTOR SHALL NOT BEGIN ANY OPERATIONS ON THE PROJECT UNTIL ALL TEMPORARY SIGNS HAVE BEEN INSTALLED & FLASHER LIGHTS HAVE BEEN ATTACHED TO ALL REQUIRED SIGNS & BARRICADES.

THE ENGINEER MAY ALTER THE CONSTRUCTION STAGING TO IMPROVE THE TRAFFIC FLOW OR THE CONTRACTOR'S OPERATION WITHIN THE CONSTRUCTION AREA. ANY CHANGES IN THE CONSTRUCTION STAGING SHALL NOT RESULT IN ADDITIONAL COMPENSATION TO THE CONTRACTOR.

THE WORK VEHICLE USED FOR PLACING BARRICADES OR MARKINGS SHALL HAVE EITHER FLASHING (ALTERNATING) OR ROTATING LIGHTS.

AT LEAST ONE STANDARD ORANGE WARNING FLAG SHOULD BE POSITIONED OVER EACH WARNING SIGN USED FOR THESE OPERATIONS.

THE TEMPORARY SIGNS WHICH ARE TO REMAIN IN THE SAME PLACE FOR 60 DAYS OR MORE SHALL BE INSTALLED ON DRIVEN POSTS. ALL OTHER TEMPORARY SIGNS MAY BE INSTALLED ON PORTABLE SUPPORTS. ALL SIGNS SHALL HAVE A MINIMUM BOTTOM HEIGHT OF 7 FEET. TRAFFIC CONES SHALL BE CLEANED & HAVE A MINIMUM HEIGHT OF 28 INCH.

CONTRACTOR WILL FURNISH, ERECT AND MAINTAIN ALL TRAFFIC CONTROL DEVICES SHOWN ON THE PLAN OR AS DIRECTED BY THE ENGINEER. THE TRAFFIC CONTROL DEVICES SHALL BE IN STRICT ACCORDANCE WITH THE MANUAL OF UNIFORM TRAFFIC CONTROL DEVICES, 2011 EDITION.

DROP-OFFS IN EXCESS OF 3" SHALL BE SHIELDED WITH DRUMS TO PROTECT THE TRAFFIC AND THE WORK.

ANY EXISTING SIGNS REMOVED BY THE CONTRACTOR ARE TO REMAIN THE PROPERTY OF THE CITY. THE CONTRACTOR SHALL STORE IN A SECURE LOCATION ON SITE ANY EXISTING SIGNS THAT ARE REMOVED AND COORDINATE PICK UP BY THE CITY.

ALL TEMPORARY TRAFFIC CONTROL DEVICES SHALL BE IN ACCORDANCE WITH TDOT TRAFFIC CONTROL DETAILS T-M-1 THRU T-M-17.

## SOIL EROSION AND SEDIMENTATION CONTROL

ALL SOIL EROSION AND SEDIMENTATION MUST BE CONTROLLED AND CONTAINED ON SITE.

SOIL EROSION AND SEDIMENTATION CONTROL: IN ADDITION TO THE GENERAL SOIL EROSION AND SEDIMENTATION CONTROL REQUIREMENTS IN THE PROPOSAL THE FOLLOWING MEASURES SHALL BE INCORPORATED INTO THIS PROJECT:

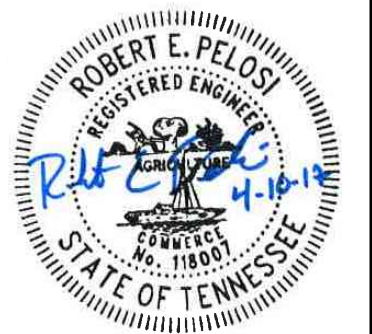
- THE CONTRACTOR SHALL CONDUCT HIS OPERATIONS IN SUCH A MANNER AS TO MINIMIZE THE AREAS LEFT BARREN DURING CONSTRUCTION AND TO DISTURB ONLY THOSE AREAS ABSOLUTELY REQUIRED FOR THE CONSTRUCTION OF THE PROJECT.
- EROSION CONTROL ITEMS (SILT FENCE, FILTERS, CHECK DAMS & SEDIMENT TRAPS AS CALLED OUT ON PLAN &/OR AS DIR. BY ENGR.) SHALL BE INSTALLED AND MAINTAINED ACCORDING TO TDOT STD. PLANS, AND SHALL BE REMOVED WHEN THEY ARE NO LONGER EFFECTIVE AS DETERMINED BY THE ENGINEER. NO SEPARATE PAYMENT SHALL BE ALLOWED FOR EITHER MAINTENANCE OR REMOVAL OF THE EROSION CONTROL ITEMS.
- THE CONTRACTOR SHALL REMOVE SEDIMENT COLLECTED IN CULVERTS & SUMPS OF ALL DRAINAGE STRUCTURES CONSTRUCTED WITH THE PROJECT WHEN SUCH SEDIMENT EXCEEDS 1/2 OF THE SUMP DEPTH OR CULVERT DIA. THE ENGINEER WILL INSPECT SUMPS & CULVERTS AFTER STORMS AND DIRECT THE CONTRACTOR TO CLEANOUT SUMPS & CULVERTS TO PROVIDE FOR SEDIMENT COLLECTIONS. CLEARING SUMPS & CULVERTS FOR SEDIMENTATION CONTROL SHALL NOT BE PAID FOR SEPARATELY.
- THE CONTRACTOR SHALL FOLLOW LOCAL RULES AND REGULATIONS FOR SOIL EROSION AND SEDIMENTATION CONTROL FOR ALL MATERIALS THAT ARE DISPOSED OF OFF THE PROJECT SITE.



ARCHITECTS ENGINEERS PLANNERS

209 10TH AVENUE SOUTH  
NASHVILLE, TN 37203  
615.649.5264

OHM-ADVISORS.COM



REVISIONS: ### ### ### ### ### ### ### ###

MUNICIPALITY: GOODLETTSVILLE  
COUNTY: DAVIDSON  
CAUD: WB  
PROJ. NO.: RP  
ENG: RP  
DATE: 4/7/2017

CITY OF GOODLETTSVILLE  
JANETTE AVE. DRAINAGE IMPROVEMENTS  
GENERAL NOTES

DRAWING: PA TH+P:\1000\_1999\1079160010\_Jonette\_Ave\_Drainage\_imp\_Drawings\Civil\Misc\160010N01.dwg Apr. 10, 2017 - 4:12pm

COPYRIGHT 2016 OHM. ALL DRAWINGS AND WRITTEN MATERIALS APPEARING HEREIN CONSTITUTE THE ORIGINAL AND UNPUBLISHED WORK OF OHM AND THE SAME MAY NOT BE DUPLICATED, DISTRIBUTED, OR DISCLOSED WITHOUT PRIOR WRITTEN CONSENT OF OHM.



**WATER & SEWER UTILITY SYMBOLS**

- EXISTING**
- ST STORM MANHOLE
  - ☐ SQUARE CATCH BASIN
  - ⊕ ROUND CATCH BASIN
  - ==== CULVERT
  - ⊕ CULVERT W/O END SECTION
  - ) CULVERT W/END SECTION
  - ⊕ SANITARY MANHOLE
  - ⊕ CLEAN OUT
  - ⊗ GW GATE VALVE & WELL
  - ☐ GATE VALVE & BOX
  - W WATER STOP BOX
  - ☉ FIRE HYDRANT
  - MP METER PIT
  - W WATER METER
  - SH SPRINKLER HEAD
  - ⊕ IRRIGATION VALVE

- PROPOSED**
- STORM MANHOLE
  - INLET/CATCH BASIN
  - ) CULVERT END SECTION
  - SANITARY MANHOLE
  - ⊗ CV&W GATE VALVE & WELL
  - ⊗ GV&B GATE VALVE & BOX
  - ⊗ TSV&W TAPPING SLEEVE VALVE & WELL
  - ⊗ TSV&B TAPPING SLEEVE VALVE & BOX
  - FIRE HYDRANT

- REAL ESTATE SYMBOLS**
- CONTIGUOUS PROPERTY SYMBOL
  - XXXX PARCEL NUMBER BOX
  - XXX NO ROW IMPACTS

**MISCELLANEOUS UTILITY SYMBOLS**

- EXISTING**
- ↖ GUY WIRE
  - ⊕ GP GUY POLE
  - ⊕ U UTILITY POLE
  - ☀ U UTILITY POLE W/LIGHT
  - ☀ LIGHT/DECOR LAMP POLE
  - ☀ FLOOD LIGHT
  - ☐ GAS VALVE
  - ⊕ G GAS VENT
  - ⊕ G GAS METER
  - ⊕ G GAS RISER
  - ☉ TRAFFIC SIGNAL
  - ⊕ P PEDESTRIAN RISER
  - ⊕ E TRANSFORMER PAD
  - ⊕ U PRIVATE UTILITY MANHOLE
  - R X R RAILROAD CROSSING
  - ⊕ E ELECTRIC METER
  - ⊕ PB PHONE BOOTH
  - ⊕ TS TRAFFIC SIGNAL CONTROLLER
  - ⊕ HAND HOLE
  - ⊕ E ELECTRIC RISER
  - ⊕ T TELEPHONE RISER
  - ⊕ C CABLE TV RISER
  - ⊕ W MONITORING WELL
  - ☐ UNDERGROUND MARKER

**MISCELLANEOUS SYMBOLS**

- EXISTING**
- ⊕ RIPRAP
  - ↑ SIGN
  - FLOW DIRECTION
  - ☐ STUMP
  - ☐ WETLAND
  - ☀ CONIFEROUS TREE } CL 1 1" TO 5"
  - ☀ DECIDUOUS TREE } CL 2 6" TO 17"
  - ☀ } CL 3 18" TO 35"
  - ☀ } CL 4 36" AND UP
  - ☀ CONIFEROUS SHRUB
  - ☀ DECIDUOUS SHRUB
  - ⊕ SB# SOIL BORING
  - ⊕ SECTION CORNER
  - MON MONUMENT
  - IRON ROD/PIPE
  - ⊕ PK PK NAIL
  - ⊕ BM BENCHMARK
  - ⊕ TP# TRAVERSE POINT
  - ☐ MAIL/NEWSPAPER BOX
  - ⊕ FP FLAG POLE
  - POST
- HAZARDOUS OR FLAMMABLE MATERIAL USED WITH UNDERGROUND GAS & ELECTRICAL LINES
- CAUTION - CRITICAL UNDERGROUND UTILITY USED WITH TELEPHONE & FIBER OPTIC LINES
- PROPOSED**
- ⊕ RIPRAP
  - ↑, II, H, I, H, HI SIGN
  - FLOW DIRECTION
  - ⊕ XX WM STRUCTURE NUMBER
  - ⊕ XX SAN
  - ⊕ XXX STM
  - ▨ ADA SIDEWALK RAMP
  - ▨ PROPOSED ASPHALT PAVING

**UTILITY PATTERN**

- EXISTING**
- ELEC — ELECTRICAL \*
  - G — GAS \ OIL
  - T — CABLE/TELEPHONE \*
  - FIBER OPTIC — FIBER OPTIC \*
  - W — WATER
  - SA — SANITARY
  - ST — STORM
- PROPOSED**
- 12" ~> STORM/SANITARY/WATER
  - 12" PRIMARY UTILITY WILL HAVE A CONTINUOUS LIFESTYLE, WITH THE SECONDARY UTILITY MATCHING ITS RESPECTIVE EXISTING UTILITY LIFESTYLE
- \*OH = OVERHEAD, UG = UNDERGROUND

**ROW PATTERN**

- EXISTING**
- ..... EXIST. PERMANENT UTILITY EASEMENT
  - EX. R.O.W. — ROW
  - ℓ PROPERTY/PARCEL
- PROPOSED**
- ROW — PROP. PERMANENT SEWER EASEMENT
  - PROP. TEMPORARY CONST. EASEMENT

**TOPO PATTERN**

- EXISTING**
- ~ HEDGE/TREE
  - /// FENCE
  - GUARDRAIL
  - CENTERLINE OF DITCH
  - RAILROAD
  - WETLAND/EDGE OF WATER
- PROPOSED**
- GRADING LIMIT (SLOPE STAKE)
  - CENTERLINE OF DITCH
  - GUARDRAIL
  - /// FENCE

**REMOVAL LEGEND**

- ▨ SIDEWALK REMOVAL
- ▨ HMA SURFACE REMOVAL
- ▨ PAVEMENT REMOVAL
- ▨ COLD MILLING HMA SURFACE
- ▨ HMA BASE CRUSHING AND SHAPING
- ▨ EXCAVATION, EARTH, MODIFIED
- CURB AND GUTTER, REM
- ⊗ TREE, REM
- S-XXXXXX SALVAGE
- B-XXXXXX BULKHEAD
- A-XXXXXX ABANDON
- R-XXXXXX REMOVE
- ADJ-XXXXXX ADJUST
- REL-XXXXXX RELOCATE
- REC-XXXXXX RECONSTRUCT
- R B/O-XXXXXX REMOVE BY OTHERS
- ADJ B/O-XXXXXX ADJUST BY OTHERS
- REL B/O-XXXXXX RELOCATE BY OTHERS

**IF NECESSARY FOR CLARITY**

- Ⓢ SALVAGE
- ⓑ BULKHEAD
- Ⓐ ABANDON
- Ⓒ CLEARING
- Ⓡ REMOVE
- Ⓡ REL RELOCATE
- Ⓡ REC RECONSTRUCT
- Ⓡ REL B/O RELOCATE BY OTHERS
- Ⓡ ADJ B/O ADJUST BY OTHERS

**SPECIAL LEGEND**



DRAWING: P:\1000\_1999\1079160010\_Janette\_Ave\_Drainage\_imp.Dwg Date: 4/7/17 4:11pm

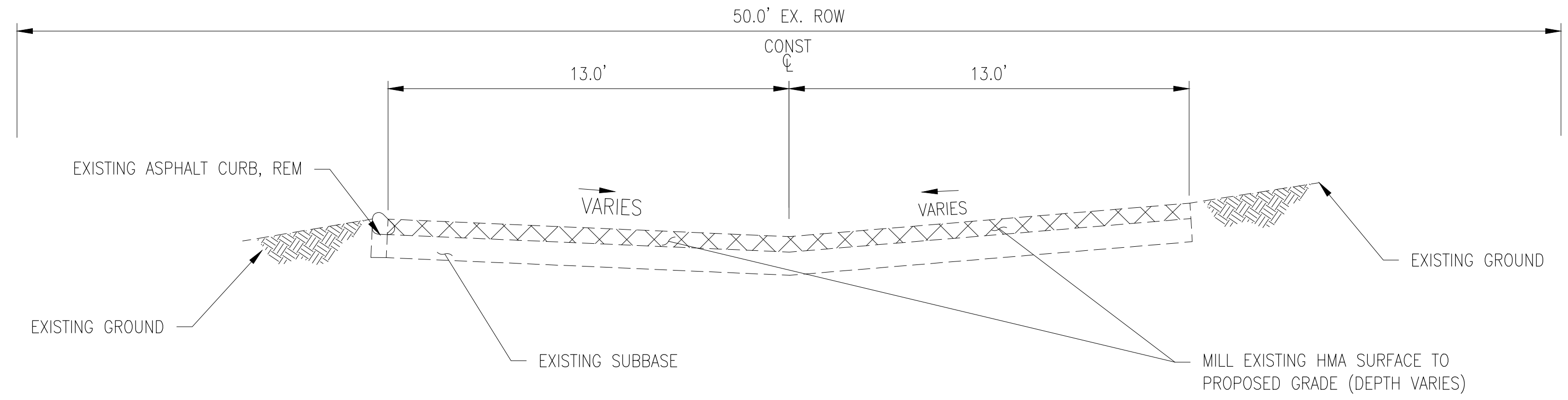
REVISIONS: ###

MUNICIPALITY: GOODLETTSVILLE  
COUNTY: DAVENPORT  
CADD: RB  
PROJECT: CITY OF GOODLETTSVILLE  
JANETTE AVE DRAINAGE IMPROVEMENTS  
DATE: 4/7/17  
PROJ NUMBER: 1079-16-0010  
ENG: RP  
PROJ LEAD: RP  
SHEET: 3 OF 10

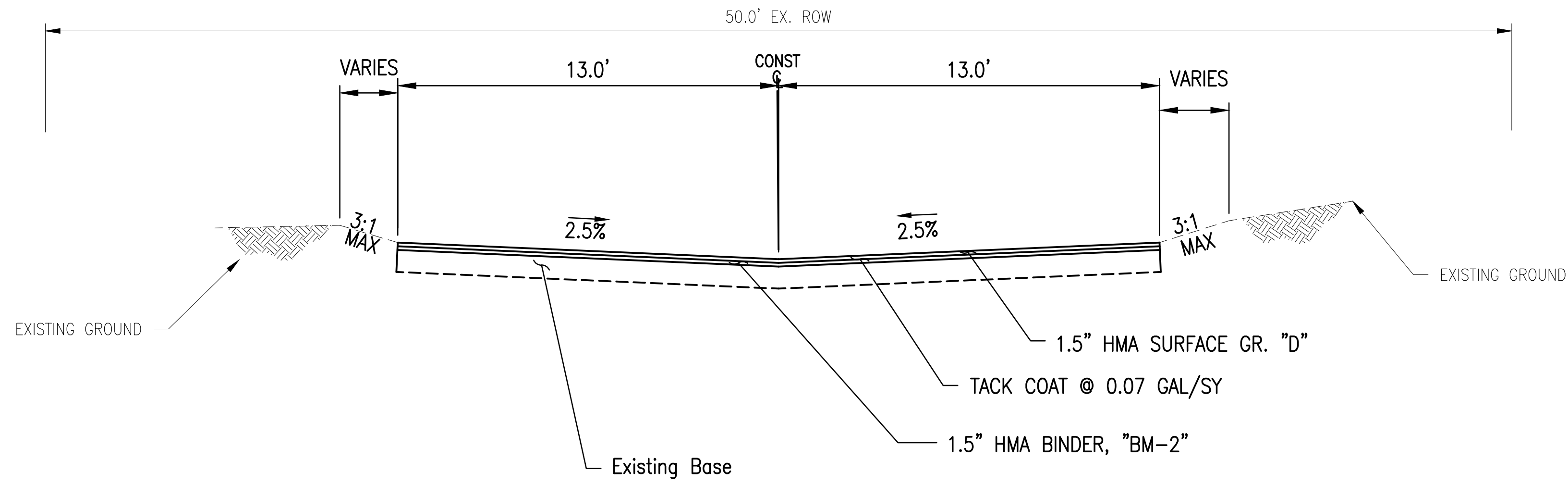
JOB BENCHMARK #  
TIE IN WOOD POWER POLE, NORTH  
SIDE OF JANETTE AVE.  
ELEV 478.08

JOB BENCHMARK #  
TIE IN WOOD POWER POLE, NORTH  
SIDE OF JANETTE AVE.  
ELEV 497.68

# JANETTE AVENUE



JANETTE EXISTING CROSS SECTION

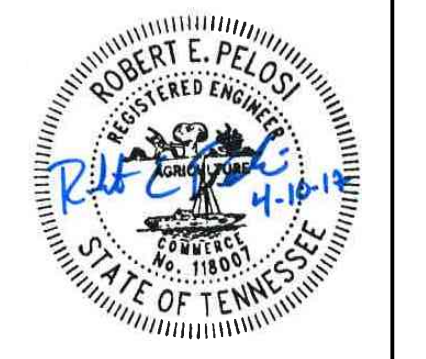


JANETTE PROPOSED TYPICAL SECTION

ARCHITECTS ENGINEERS PLANNERS

209 10TH AVENUE SOUTH  
NASHVILLE, TN 37203  
615.649.5264

OHM-ADVISORS.COM



REVISIONS:

###	###
###	###
###	###
###	###
###	###
###	###

DATE	PROJ NUMBER	ENG	PROJ MGR	CADD	COUNTY	MUNICIPALITY
4/7/2017	1075-16-000	RP	RP	WB	DANFOSN	GOODLETTSVILLE
CITY OF GOODLETTSVILLE						
JANETTE AVE. DRAINAGE IMPROVEMENTS						
TYPICAL SECTIONS						



Know what's below.  
Call before you dig.

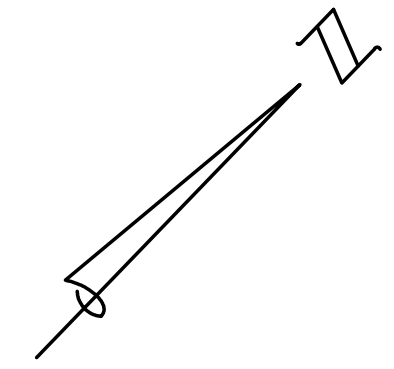
COPYRIGHT 2016 OHM ALL DRAWINGS AND WRITTEN MATERIALS APPEARING HEREIN CONSTITUTE THE ORIGINAL AND UNPUBLISHED WORK OF OHM AND THE SAME MAY NOT BE DUPLICATED, DISTRIBUTED, OR DISCLOSED WITHOUT PRIOR WRITTEN CONSENT OF OHM







# JANETTE AVENUE (50' ROW)



JOB BENCHMARK #  
TIE IN WOOD POWER POLE, NORTH  
SIDE OF JANETTE AVE.  
ELEV 478.08

JOB BENCHMARK #  
TIE IN WOOD POWER POLE, NORTH  
SIDE OF JANETTE AVE.  
ELEV 497.68

**OHM**  
ARCHITECTS ENGINEERS PLANNERS

209 10TH AVENUE SOUTH  
NASHVILLE, TN 37203  
615.649.5264

OHM-ADVISORS.COM

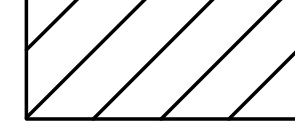
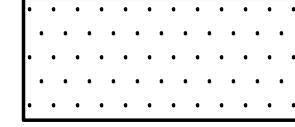

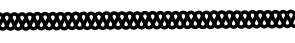


APR. 10, 2017 - 4:02pm  
DRAWING PATH: c:\1000\_1999\1079160010\_Janette\_Ave\_Drainage\_Improvements\Drawings\Civil\Plans\Const\160010REM\_01.dwg

P.O.B.  
STA. 10+00.00  
N 1756880.19  
E 7139886.36

BEGIN CONSTRUCTION  
STA. 10+84.00

P.O.B.  
STA. 0+00.00  
N 1756844.532  
E 714023.798

-  PAVEMENT REMOVAL
-  EXCAVATION
-  ASPHALT CURB REMOVAL
-  PIPE REMOVAL

ESTIMATED QUANTITIES, THIS SHEET		
QUANTITY	UNIT	ITEM
3065	SY	COLD MILLING HMA SURFACE
6	EA	CATCH BASIN REMOVAL
600	LF	EXISTING ASPHALT CURB REMOVAL
3	EA	SANITARY SEWER MANHOLE ADJUSTMENT
20	LF	15" CMP REMOVAL
160	LF	18" CMP REMOVAL
180	LF	36" CMP REMOVAL

GRAPHIC SCALE: 1 inch = 40 feet



REVISIONS:  
#####  
#####  
#####  
#####  
#####

MANIPALITY COUNTY CAD COUNTY  
CITY OF GOODLETTSVILLE DAVIDSON GOODLETTSVILLE

CITY OF GOODLETTSVILLE  
JANETTE AVE. DRAINAGE IMPROVEMENTS  
REMOVAL PLAN

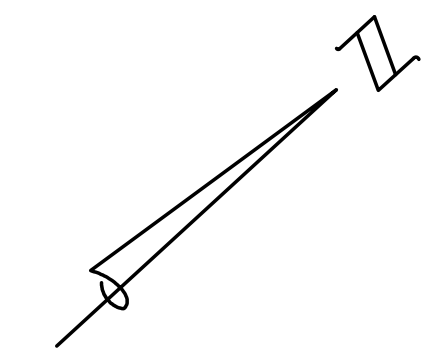
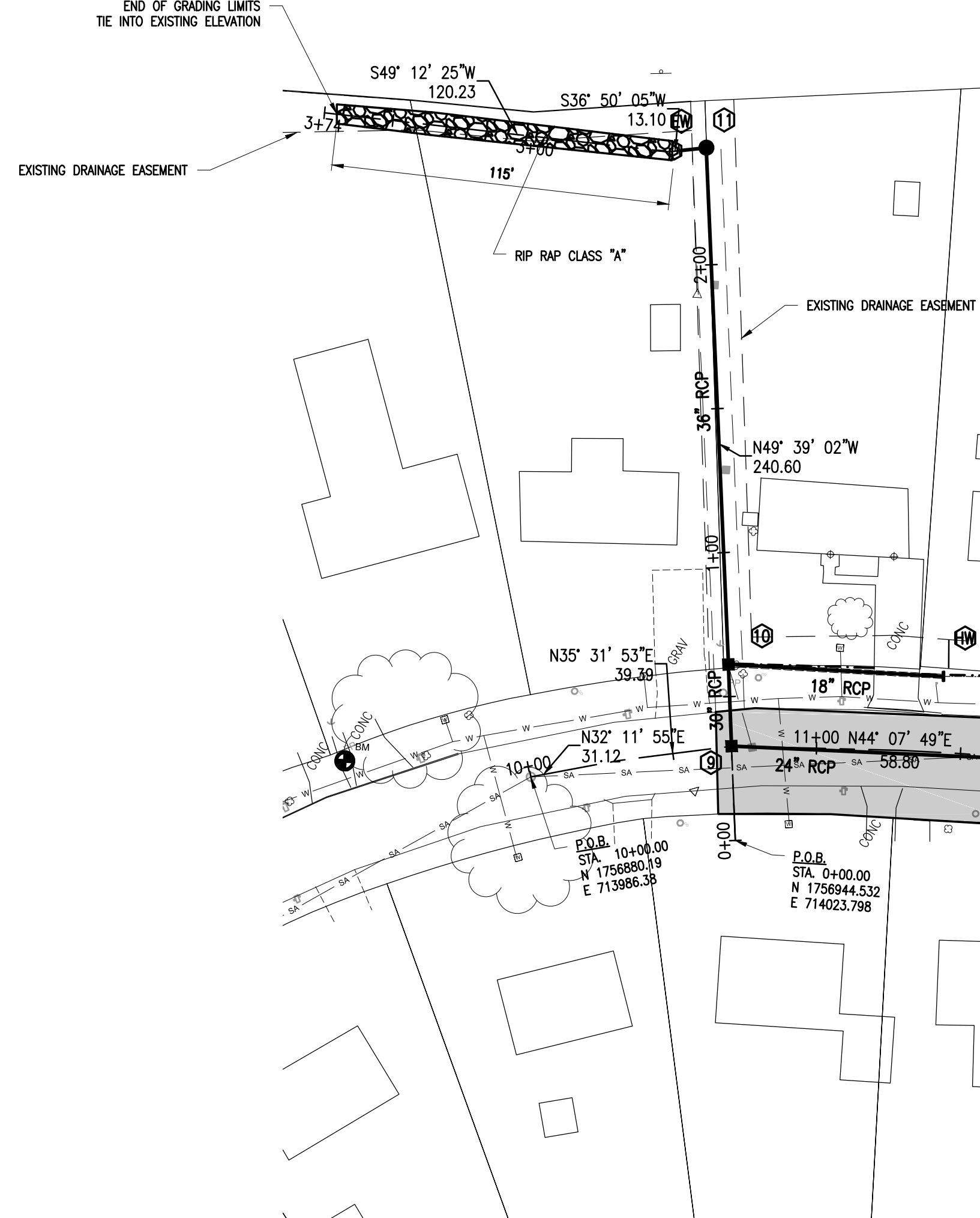
RESPONSE: 2018 GHW ALL DRAWINGS AND WRITTEN MATERIALS APPEARING HEREIN CONSTITUTE THE ORIGINAL AND UNPUBLISHED WORK OF OHM AND THE SAME MAY NOT BE DUPLICATED, DISTRIBUTED, OR DISCLOSED WITHOUT PRIOR WRITTEN CONSENT OF OHM



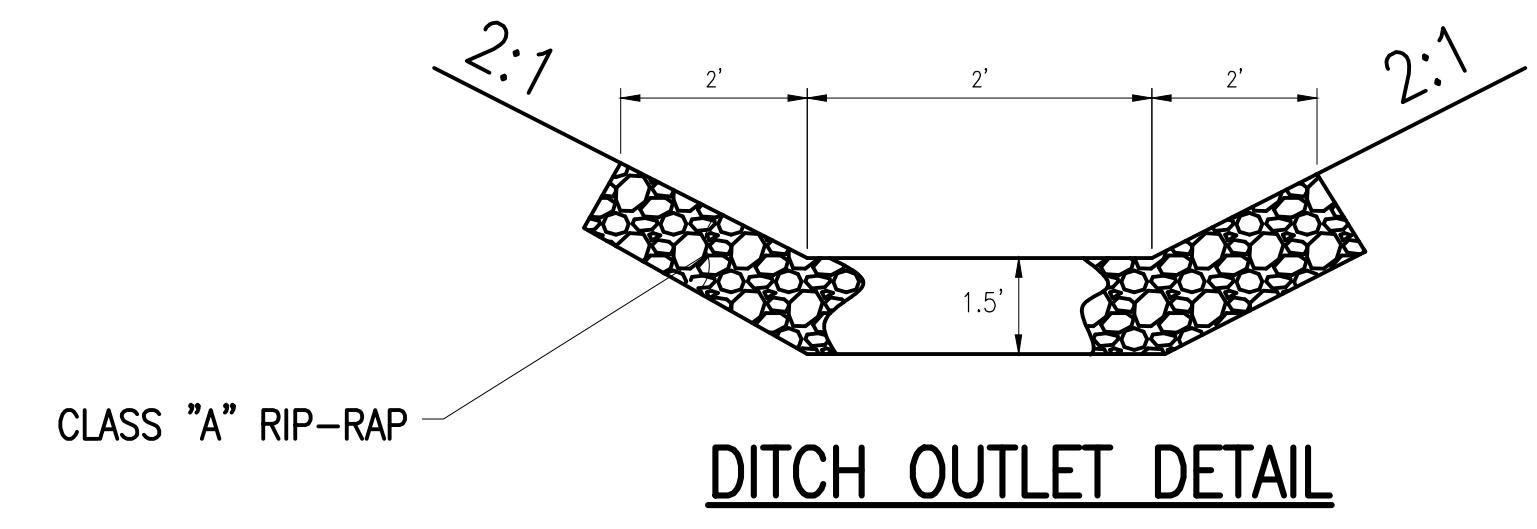
JOB BENCHMARK #  
TIE IN WOOD POWER POLE, NORTH  
SIDE OF JANETTE AVE.  
ELEV 478.08

JOB BENCHMARK #  
TIE IN WOOD POWER POLE, NORTH  
SIDE OF JANETTE AVE.  
ELEV 497.68

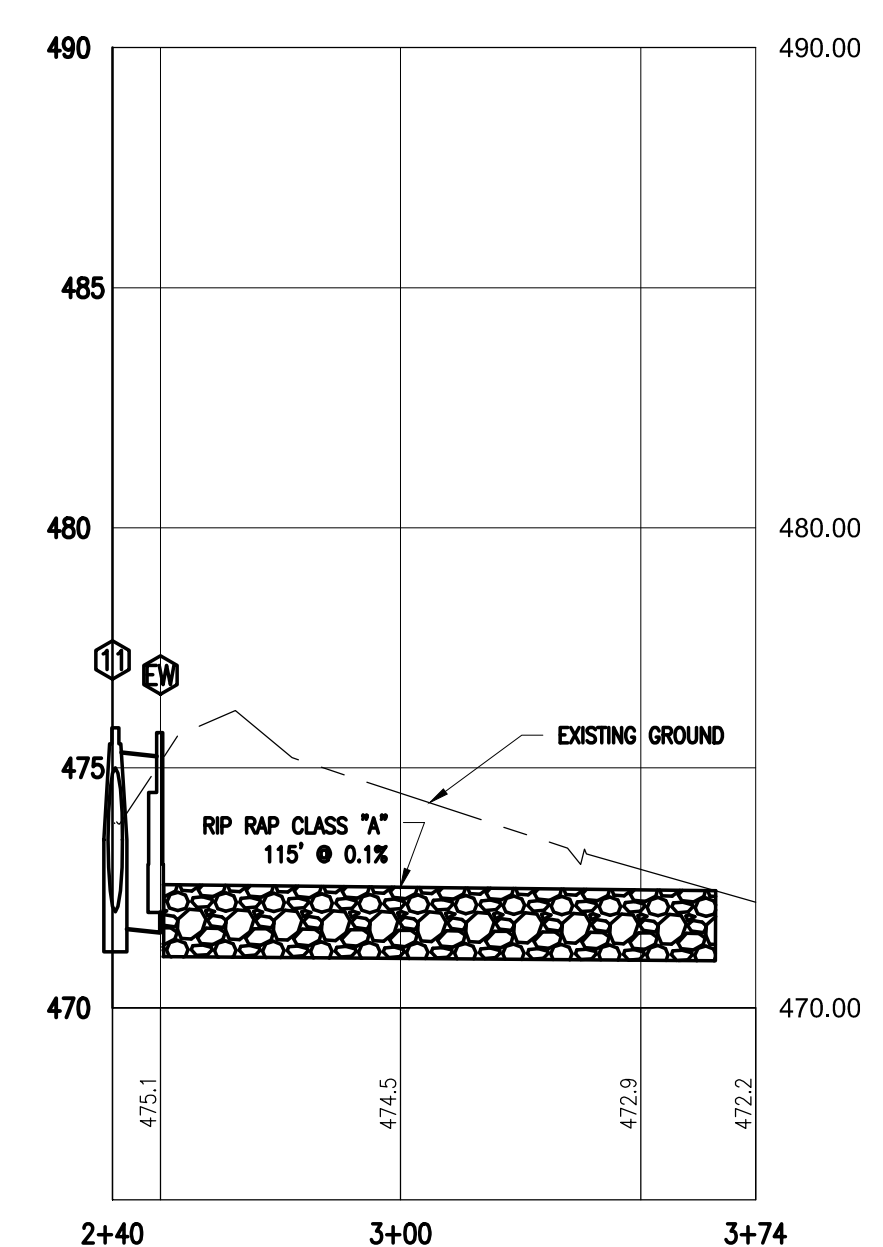
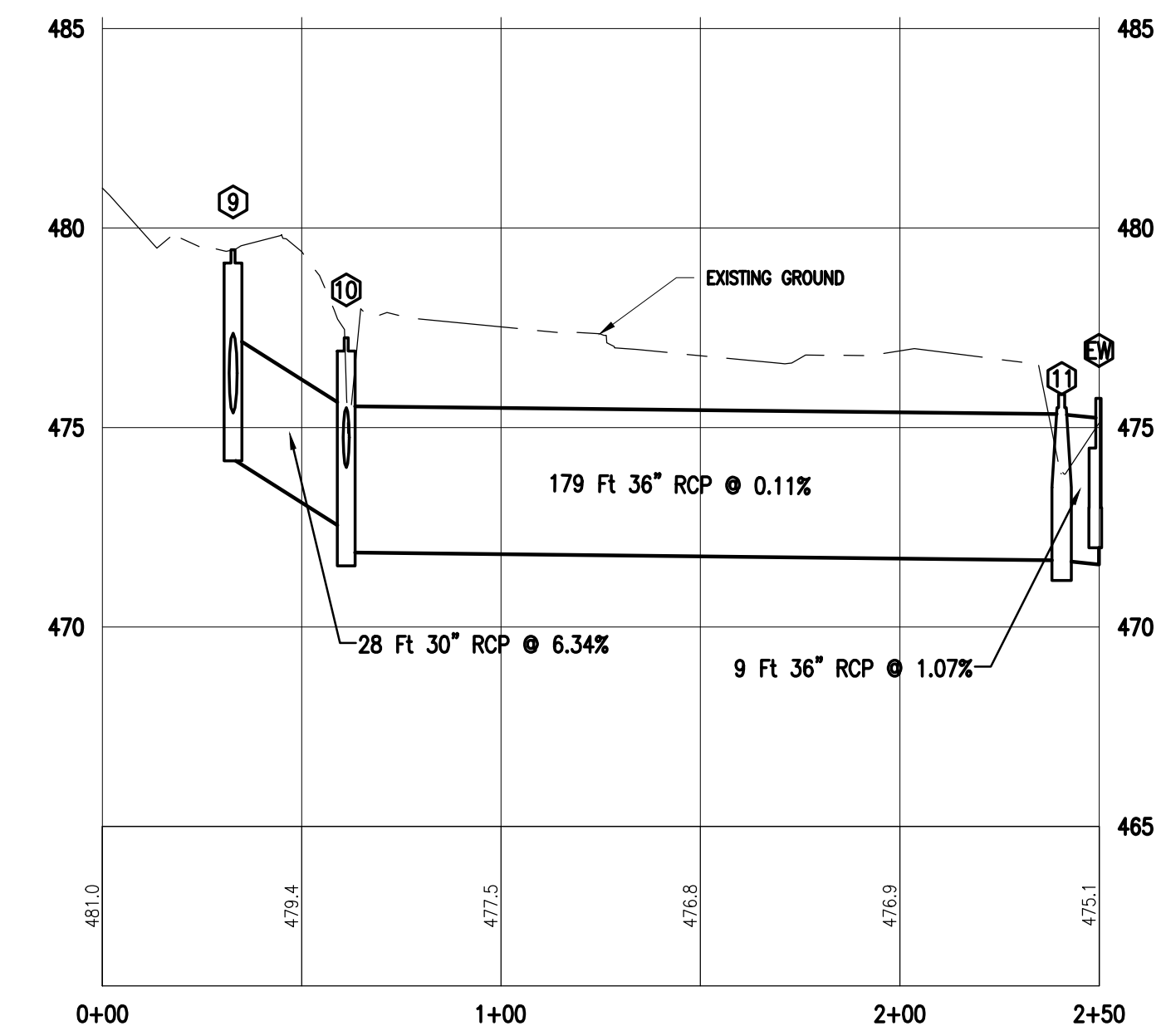
# JANETTE AVENUE (50' ROW)



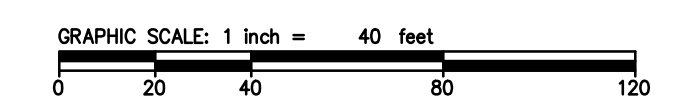
ESTIMATED QUANTITIES, THIS SHEET		
QUANTITY	UNIT	ITEM
75	LF	18" RCP
28	LF	30" RCP
188	LF	36" RCP
1	EA	4' X 4' CATCH BASIN
1	EA	5' DIAMETER MANHOLE
1	EA	8' ENDWALL W/ DISSIPATORS
1	EA	18" STRAIGHT ENDWALL
80	TON	RIP RAP CLASS "A"



## PROFILE VIEW OF PROP. STORM OUTLET

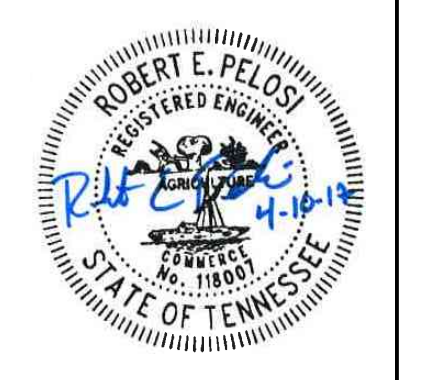


- STA 10+70.51, 26.4' L  
 18" HEADWALL  
 18" INV S 479.91
- STA 0+61.15, 0.0'  
 4' X 4' CATCH BASIN  
 T/CAST 477.25  
 30" INV SE 472.70  
 36" INV NW 472.20  
 18" INV NE 474.00
- STA 2+40.60, 0.0'  
 5' DIAMETER MANHOLE  
 T/CAST 475.83  
 36" INV SE 472.00  
 36" INV SW 472.00
- STA 2+49.98, 0.0' L  
 8' WINGED HEADWALL W/ DISSIPATORS  
 36" INV NE 471.90



**811**  
Know what's below.  
Call before you dig.

**OHM**  
ARCHITECTS ENGINEERS PLANNERS  
209 10TH AVENUE SOUTH  
NASHVILLE, TN 37203  
615.649.5264  
OHM-ADVISORS.COM



REVISIONS:

NO.	DATE	DESCRIPTION
###	###	###
###	###	###
###	###	###
###	###	###

MUNICIPALITY COUNTY CAD NO PROJ MBR ENG PROJ NUMBER DATE  
 GOODLETTSVILLE BARNSON WB 1029-16-000 RP 1-7/2017

CITY OF GOODLETTSVILLE  
 JANETTE AVE. DRAINAGE IMPROVEMENTS  
 CONSTRUCTION PLAN OUTLET

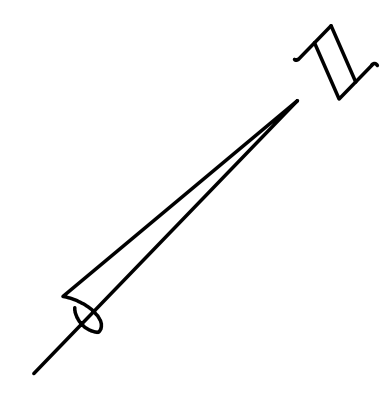
COPYRIGHT 2016 OHM ALL DRAWINGS AND WRITTEN MATERIALS APPEARING HEREIN CONSTITUTE THE ORIGINAL AND UNPUBLISHED WORK OF OHM AND THE SAME MAY NOT BE DUPLICATED, DISTRIBUTED, OR DISCLOSED WITHOUT PRIOR WRITTEN CONSENT OF OHM



JOB BENCHMARK #  
TIE IN WOOD POWER POLE, NORTH  
SIDE OF JANETTE AVE.  
ELEV 478.08

JOB BENCHMARK #  
TIE IN WOOD POWER POLE, NORTH  
SIDE OF JANETTE AVE.  
ELEV 497.68

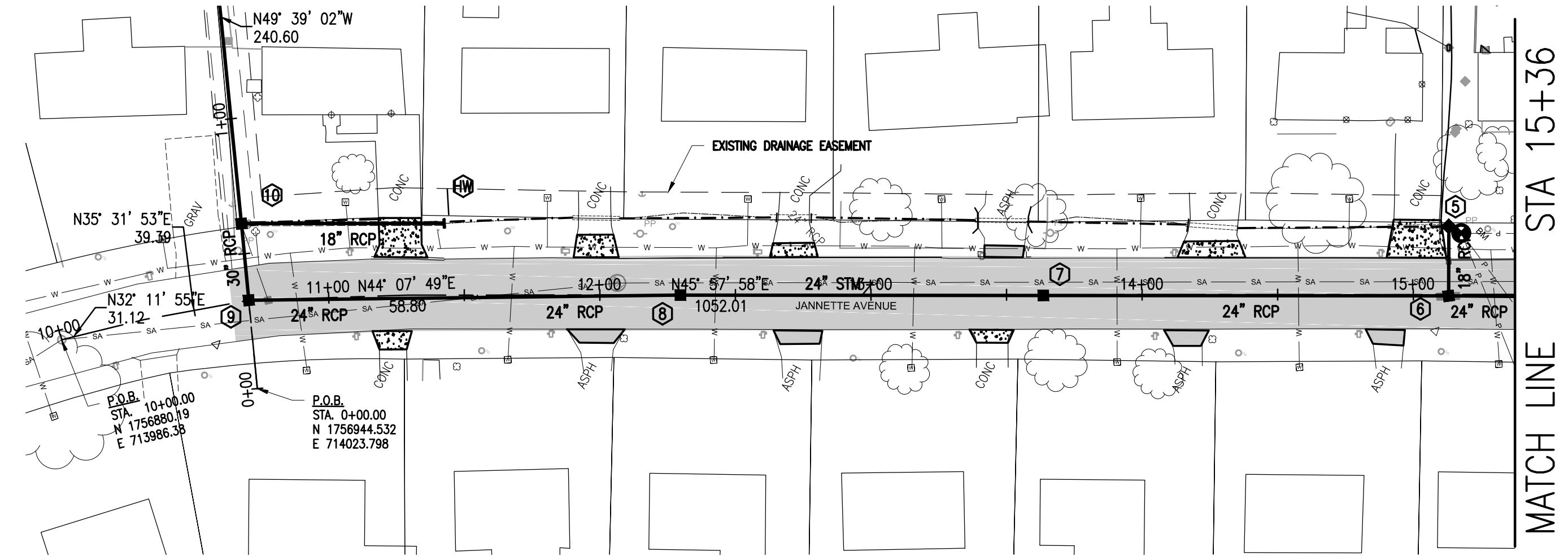
# JANETTE AVENUE (50' ROW)



**OHM**  
ARCHITECTS ENGINEERS PLANNERS

209 10TH AVENUE SOUTH  
NASHVILLE, TN 37203  
615.649.5264

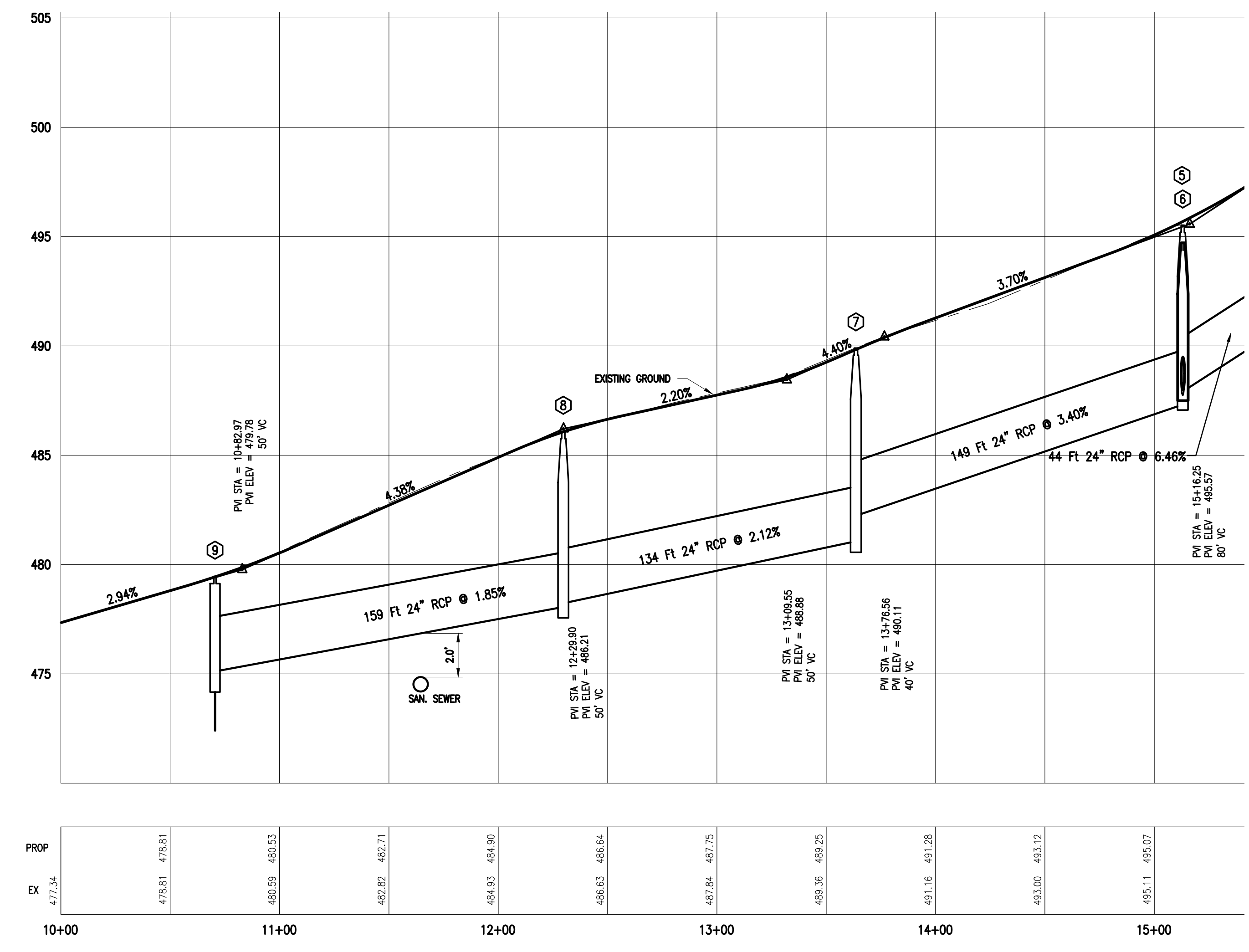
OHM-ADVISORS.COM



ESTIMATED QUANTITIES, THIS SHEET

QUANTITY	UNIT	ITEM
1	EA	4' X 4' CATCH BASIN
4	EA	32" X 32" CATCH BASIN
26	LF	18" RCP
490	LF	24" RCP
1020	SF	CONCRETE DRIVEWAY APRON 6" (7)
600	SF	ASPHALT DRIVEWAY APRON (5)
112	TON	HMA BINDER "BM-2"
119	TON	HMA SURFACE GRADE "D"
7	VF	ADDITIONAL CATCH BASIN SIDEWALL
140	TON	MINERAL AGGREGATE BASE

## PROFILE VIEW OF PROP. STORM SEWER

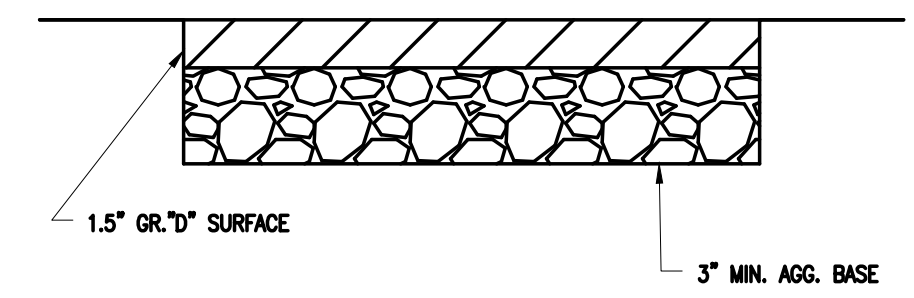


### PAVING LEGEND

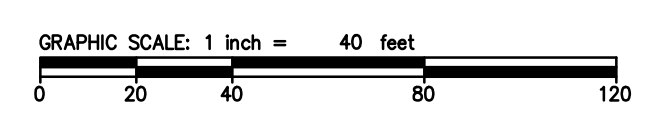
ASPHALT

CONCRETE

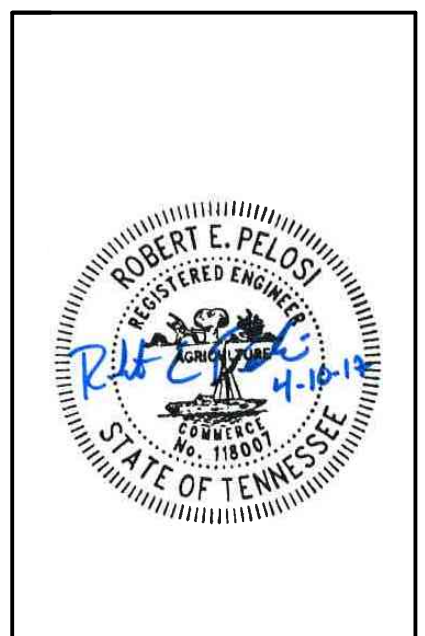
- 5  
STA 15+13.09, -25.1' L  
32" X 32" CATCH BASIN  
T/CAST 494.71  
18" INV SE 487.99
- 6  
STA 15+13.02, 0.5' R  
32" X 32" CATCH BASIN  
T/CAST 495.52  
24" INV NE 488.16  
18" INV NW 487.73  
24" INV SW 487.56
- 7  
STA 13+63.56, 0.3' R  
32" X 32" CATCH BASIN  
T/CAST 489.90  
24" INV NE 482.48  
24" INV SW 481.31
- 8  
STA 12+29.75, 0.1' R  
32" X 32" CATCH BASIN  
T/CAST 486.08  
24" INV NE 478.48  
24" INV SW 478.31
- 9  
STA 10+70.51, 0.0' L  
4' X 4' CATCH BASIN  
T/CAST 479.46  
24" INV NE 475.36  
30" INV NW 474.50



ASPHALT DRIVEWAY DETAIL



Know what's below.  
Call before you dig.



REVISIONS:

NO.	DATE	DESCRIPTION
###	###	###
###	###	###
###	###	###
###	###	###
###	###	###
###	###	###

DATE: 4/7/2017  
PROJ NUMBER: 1079-16-010  
MUNICIPALITY: GOODLETTSVILLE  
COUNTY: DAVIDSON  
CADD: WB

CITY OF GOODLETTSVILLE  
JANETTE AVE. DRAINAGE IMPROVEMENTS  
CONSTRUCTION PLAN 10+00 TO 15+36

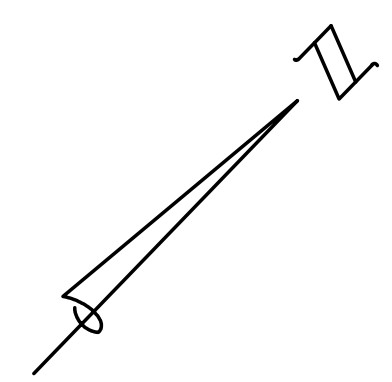
COPYRIGHT 2016 OHM. ALL DRAWINGS AND WRITTEN MATERIALS APPEARING HEREIN CONSTITUTE THE ORIGINAL AND UNPUBLISHED WORK OF OHM AND THE SAME MAY NOT BE DUPLICATED, DISTRIBUTED, OR DISCLOSED WITHOUT PRIOR WRITTEN CONSENT OF OHM.



JOB BENCHMARK #  
TIE IN WOOD POWER POLE, NORTH  
SIDE OF JANETTE AVE.  
ELEV 478.08

JOB BENCHMARK #  
TIE IN WOOD POWER POLE, NORTH  
SIDE OF JANETTE AVE.  
ELEV 497.68

# JANETTE AVENUE (50' ROW)

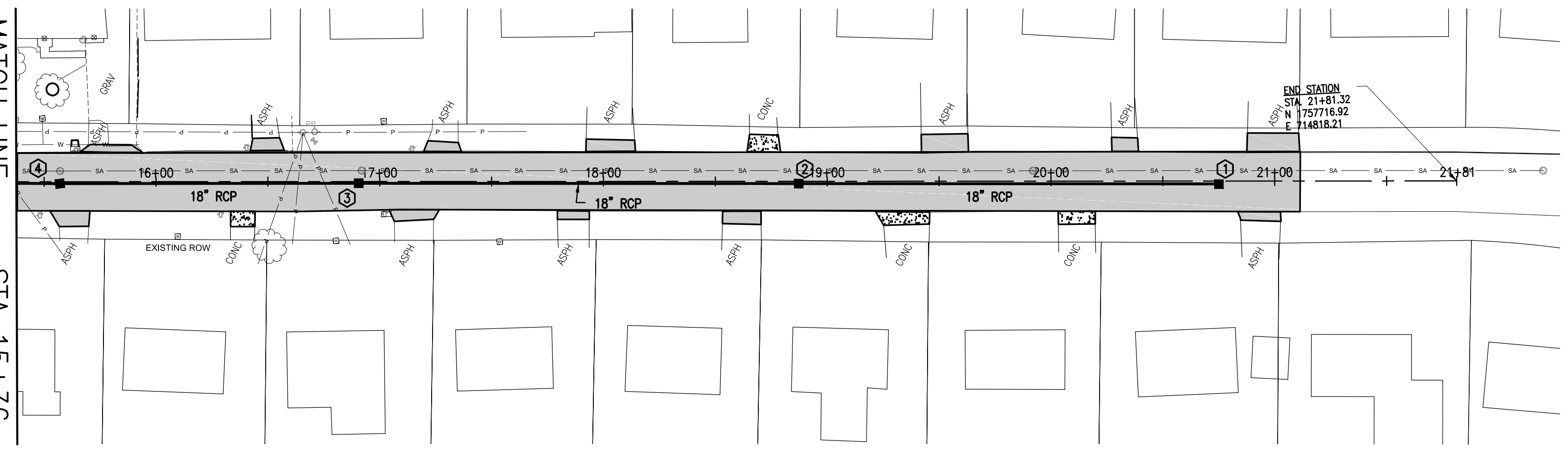


209 10TH AVENUE SOUTH  
NASHVILLE, TN 37203  
615.649.5264

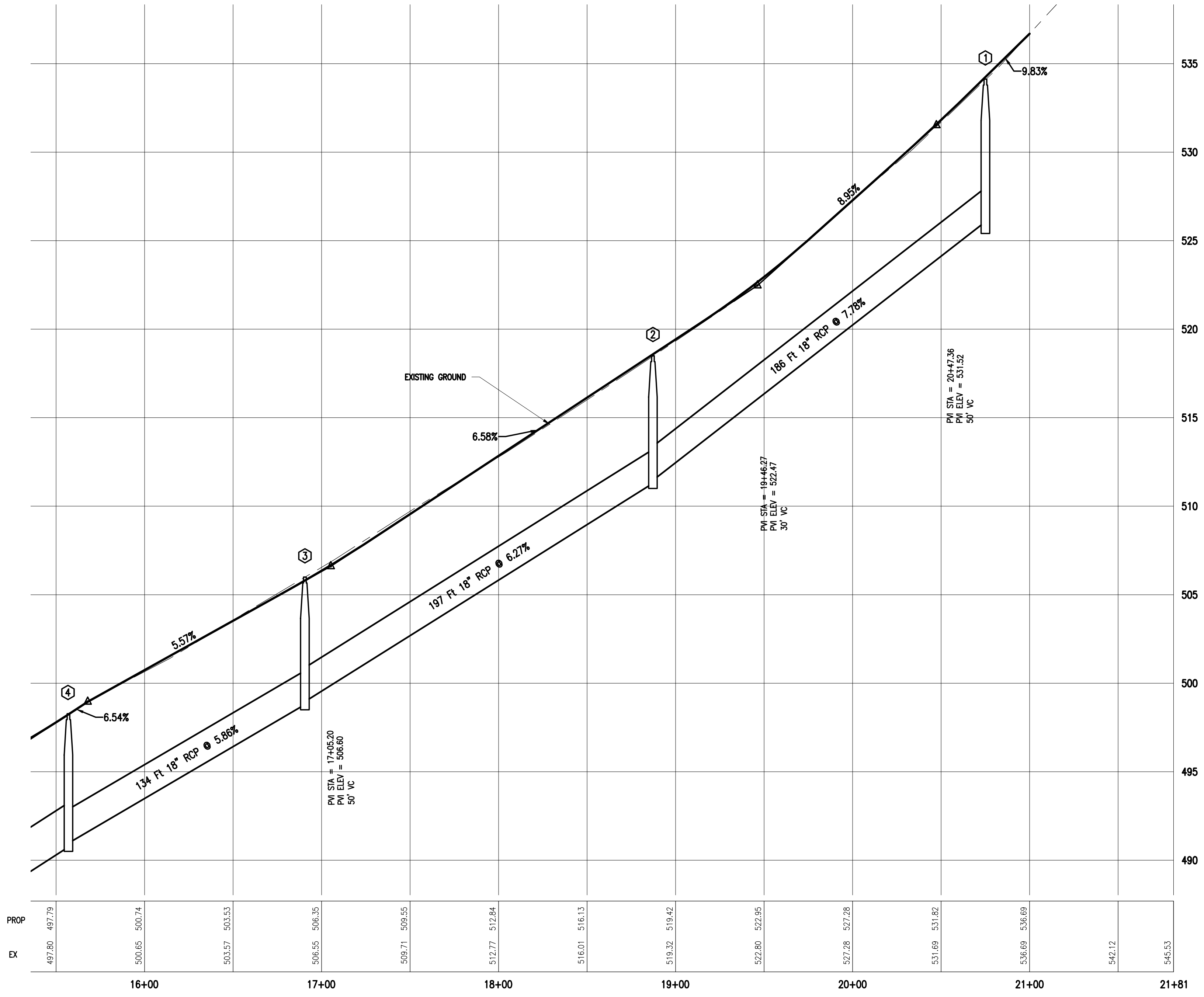
OHM-ADVISORS.COM

MATCH LINE

STA 15+36



## PROFILE VIEW OF PROP. STORM SEWER



### ESTIMATED QUANTITIES, THIS SHEET

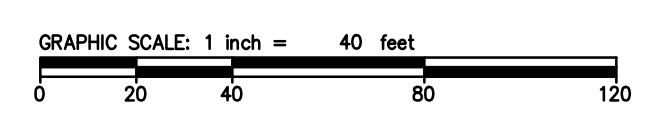
QUANTITY	UNIT	ITEM
4	EA	32" X 32" CATCH BASIN
520	LF	18" RCP
1440	SF	ASPHALT DRIVEWAY APRON (12)
480	SF	CONCRETE DRIVEWAY APRON 6" (4)
132	TON	HMA BINDER "BM-2"
141	TON	HMA SURFACE GRADE "D"
6	VF	ADDITIONAL CATCH BASIN SIDE WALL
166	TON	MINERAL AGGREGATE BASE

- ①  
STA 20+75.04, 1.4' R  
32" X 32" CATCH BASIN  
T/CAST 534.12  
18" INV SW 526.12
- ②  
STA 18+87.21, 1.0' R  
32" X 32" CATCH BASIN  
T/CAST 518.50  
18" INV NE 511.67  
18" INV SW 511.50
- ③  
STA 16+90.59, 0.7' R  
32" X 32" CATCH BASIN  
T/CAST 506.00  
18" INV NE 499.17  
18" INV SW 499.00
- ④  
STA 15+57.00, 0.8' R  
32" X 32" CATCH BASIN  
T/CAST 498.28  
18" INV NE 491.17  
24" INV SW 491.00

### PAVING LEGEND

ASPHALT

CONCRETE



REVISIONS:

###

###

###

###

###

###

DATE: 4/7/2017  
PROJ NUMBER: 1079-16-000  
ENG: RP

PROJ MGR: CADD  
COUNTY: DAVIDSON  
MUNICIPALITY: GOODLETTSVILLE

CITY OF GOODLETTSVILLE  
JANETTE AVE. DRAINAGE IMPROVEMENTS  
CONSTRUCTION PLAN 15+36 TO 21+81



Know what's below.  
Call before you dig.

COPYRIGHT 2016 OHM ALL DRAWINGS AND WRITTEN MATERIALS APPEARING HEREIN CONSTITUTE THE ORIGINAL AND UNPUBLISHED WORK OF OHM AND THE SAME MAY NOT BE DUPLICATED, DISTRIBUTED, OR DISCLOSED WITHOUT PRIOR WRITTEN CONSENT OF OHM



JOB BENCHMARK #  
TIE IN WOOD POWER POLE, SOUTH  
SIDE OF FRIENDSHIP DR.  
ELEV 490.43

### SITE DATA

AREA OF DISTURBANCE: 0.04 ± ACRES  
TEMPORARY SOIL EROSION MEASURES: SILT FENCE, SEDIMENT TUBE OR FILTER SOCK, INLET PROTECTION, CHECK DAM

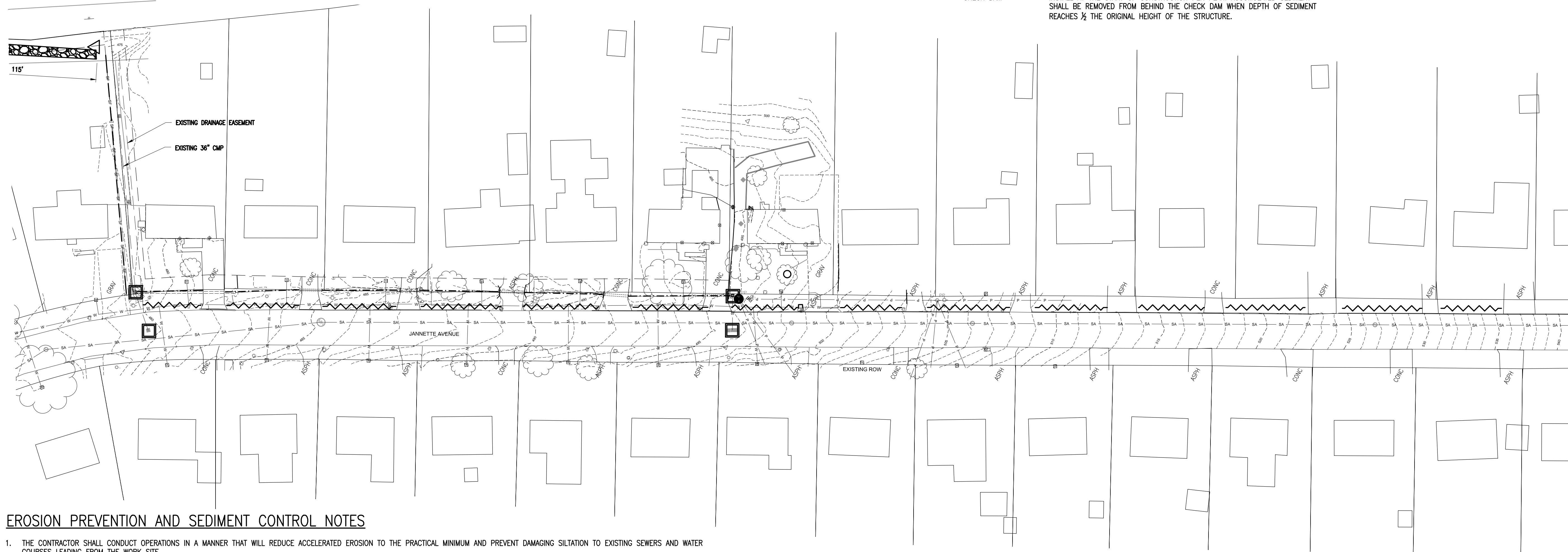
### CONSTRUCTION SEQUENCE

1. MOBILIZATION
2. INSTALL EPSC MEASURES
3. REMOVALS PER PLAN
4. CONSTRUCT STORM SEWER AND ASSOCIATED IMPROVEMENTS
5. SITE RESTORATION
6. SITE CLEAN UP
7. REMOVE EPSC MEASURES AFTER FINAL STABILIZATION

### MAINTENANCE SCHEDULE

THE CONTRACTOR SHALL INSPECT EPSC MEASURES TWICE WEEKLY UNDER NORMAL CONDITIONS, WITHIN 24 HOURS OF EACH RAIN EVENT, AND DAILY DURING A PROLONGED RAIN EVENT.

MEASURE	MAINTENANCE SCHEDULE
SILT FENCE	INSTALL AT THE START OF CONSTRUCTION PER PLAN. REMOVE ACCUMULATED SEDIMENTS WHEN DEPTH REACHES 1/2 TO 3/4 THE HEIGHT OF THE FENCE. FABRIC SHALL BE REPLACED IF DAMAGED.
DUST CONTROL	WATER SHALL BE APPLIED TO EXPOSED AREAS BY THE CONTRACTOR IN THE EVENT OF EXCESSIVE AIRBORNE DUST. DUST CONTROL SHALL BE APPLIED AS DIRECTED BY THE ENGINEER OR CITY PERSONNEL.
FILTER SOCK	INSTALL AT THE START OF CONSTRUCTION PER PLAN. REMOVE ACCUMULATED SEDIMENTS WHEN THE DEPTH REACHES 1/2 THE ORIGINAL HEIGHT OF THE TUBE. FILTER SOCK SHALL BE REMOVED IF DAMAGED.
INLET PROTECTION	INSTALL AT THE START OF CONSTRUCTION PER PLAN. ACCUMULATED SEDIMENT SHALL BE REMOVED WHEN DEPTH REACHES 1/2 THE ORIGINAL HEIGHT OF THE STRUCTURE.
CHECK DAM	INSTALL AT THE START OF CONSTRUCTION PER PLAN. ACCUMULATED SEDIMENT SHALL BE REMOVED FROM BEHIND THE CHECK DAM WHEN DEPTH OF SEDIMENT REACHES 1/2 THE ORIGINAL HEIGHT OF THE STRUCTURE.



### EROSION PREVENTION AND SEDIMENT CONTROL NOTES

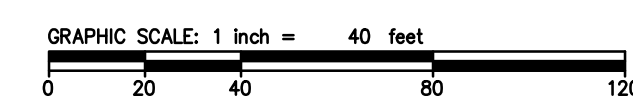
1. THE CONTRACTOR SHALL CONDUCT OPERATIONS IN A MANNER THAT WILL REDUCE ACCELERATED EROSION TO THE PRACTICAL MINIMUM AND PREVENT DAMAGING SILTATION TO EXISTING SEWERS AND WATER COURSES LEADING FROM THE WORK SITE.
2. THE CONTRACTOR SHALL CONDUCT WORK IN SUCH A MANNER AS TO PREVENT THE ENTRY OF FUELS, OILS, BITUMINOUS MATERIALS, CHEMICALS, SEWERAGE OR OTHER HARMFUL MATERIALS INTO NEARBY STREAMS.
3. WASTE DISPOSAL AREAS SHALL BE SELECTED BY THE CONTRACTOR WITH FULL CONSIDERATION OF EROSION AND SEDIMENT CONTROL, SELECTION OF DISPOSAL SITE, AND CONTROL OF OPERATIONS, AND THE RESTORATION OF SAID AREAS SHALL BE SUBJECT TO THE APPROVAL OF THE ENGINEER.
4. EXCAVATION FROM THE RIGHT-OF-WAY, CHANNELS, OR OTHER MATERIAL SHALL NOT BE DEPOSITED IN OR NEAR RIVERS, STREAMS OR PONDS WHERE IT MAY ENTER THE WATERWAY.
5. AT THE COMPLETION OF EACH DAY'S CONSTRUCTION, CARE SHALL BE TAKEN TO ENSURE THAT MINIMAL EROSION WILL OCCUR IN TRENCHES AND STOCKPILED MATERIALS UNTIL RESUMPTION OF WORK.
6. CONTRACTOR SHALL CONFINE OPERATIONS TO THE MINIMUM AMOUNT OF WORKING SPACE PRACTICAL TO MINIMIZE SOIL EROSION.
7. THE PROJECT WILL BE REGULARLY INSPECTED BY THE ENGINEER FOR EROSION CONTROL COMPLIANCE. DEFICIENCIES WILL BE CORRECTED BY THE CONTRACTOR IMMEDIATELY UPON NOTICE OF SUCH DEFICIENCIES. FAILURE TO CORRECT THE DEFICIENCIES MAY RESULT IN THE ISSUANCE OF A STOP WORK ORDER AND THERE WILL BE NO CONTRACT TIME EXTENSION GRANTED FOR THIS TYPE OF STOPPAGE.
8. TEMPORARY SOIL EROSION CONTROL MEASURES CONSISTING OF SILT FENCE, SEDIMENT TUBE OR FILTER SOCK SHALL BE IMPLEMENTED THROUGHOUT THE ENTIRE CONSTRUCTION PHASE OF THE PROJECT, AND SHALL BE REMOVED BY THE CONTRACTOR AFTER THE PERMANENT SOIL EROSION MEASURES HAVE BEEN COMPLETED.
9. STREET SWEEPING OR MUD REMOVAL SHALL BE PERFORMED DAILY FOR MUD TRACKED ONTO PUBLIC STREETS.
10. SILT FENCE SHALL BE INSTALLED AND MAINTAINED ALONG THE DOWN-SLOPE SURFACE OF THE EXCAVATED TRENCH AND PERPENDICULAR TO THE DIRECTION OF SHEET FLOW. SILT FENCE SHALL BE INSTALLED PRIOR TO EXCAVATION.
11. FINAL RESTORATION, INCLUDING BACKFILLING OF CURB, SPREADING TOPSOIL WITH SEED AND STRAW SHALL BE COMPLETED WITHIN 5 CALENDAR DAYS OF FINAL GRADING. IN THE EVENT IT IS NOT POSSIBLE TO PERMANENTLY STABILIZE THE AREA DUE TO SITE CONDITIONS AND/OR SEASONAL LIMITATIONS, THE TEMPORARY MEASURES SHALL REMAIN IN PLACE AND SHALL BE MAINTAINED BY THE CONTRACTOR UNTIL SUCH TIME AS IT IS PRACTICAL TO COMPLETE THE PERMANENT SOIL EROSION CONTROL MEASURES.
12. THE ENGINEER SHALL HAVE FULL AUTHORITY TO TEMPORARILY SUSPEND WORK IN THE EVENT THAT ANY OF THE ABOVE REQUIREMENTS ARE NOT BEING MET BY THE CONTRACTOR, OR IF CONDITIONS INDICATE THAT ADDITIONAL TEMPORARY CONTROL MEASURES ARE WARRANTED, IN THE OPINION OF THE ENGINEER.
13. THE CONTRACTOR SHALL BE RESPONSIBLE FOR THE MAINTENANCE OF THE SOIL EROSION CONTROL MEASURES WITHIN THE CONSTRUCTION AREA UNTIL THE FULL COMPLETION OF THE PROJECT.
14. CONTRACTOR TO PROVIDE PIT PUMP WATER FILTRATION IF DEWATERING IS UTILIZED DURING CONSTRUCTION.

T.D.E.C. STANDARDS DETAILS	
TITLE	DETAIL NO.
SILT FENCE WITH BACKING	7.34
FILTER SOCK	7.37
INLET PROTECTION	7.35
CHECK DAM	7.20

EPSC QUANTITIES		
EPSC ACTIVITIES WILL BE PAID FOR AT THE LUMP SUM PRICE AS BID IN THE PROPOSAL. APPROXIMATE QUANTITIES TO BE FURNISHED AND INSTALLED ARE:		
QUANTITY	UNIT	ITEM
170	LF	SILT FENCE WITH BACKING
4	EA	INLET PROTECTION
1	EA	CHECK DAM
890	LF	FILTER SOCK
1	LS	FINAL RESTORATION (TOPSOIL, SEED & STRAW)

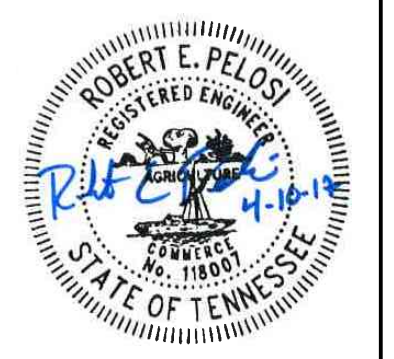
#### LEGEND

- SF — SILT FENCE W/ BACKING
- ~ ~ ~ FILTER SOCK
- ▽ CHECK DAM
- INLET PROTECTION



Know what's below.  
Call before you dig.

**OHM**  
ARCHITECTS ENGINEERS PLANNERS  
209 10TH AVENUE SOUTH  
NASHVILLE, TN 37203  
615.649.5264  
OHM-ADVISORS.COM



MUNICIPALITY: GOODLETTSVILLE  
COUNTY: DAVIDSON  
CADD: WB  
PROJ. MGR. RP  
ENG. RP  
DATE: 4/7/2017  
1079-16-0010

CITY OF GOODLETTSVILLE  
FRIENDSHIP DR. DRAINAGE IMPROVEMENTS  
EROSION PREVENTION & SEDIMENT CONTROL

UNPUBLISHED WORK OF OHM AND THE SAME MAY NOT BE DUPLICATED, DISTRIBUTED OR DISCLOSED WITHOUT PRIOR WRITTEN CONSENT OF OHM

DRAWING PATH: P:\1000-1999\1079160010\_Jannette\_Ave\_Drainage\_Improvements\Civil\Removal\160010SEC.dwg Apr 10, 2017 4:15pm