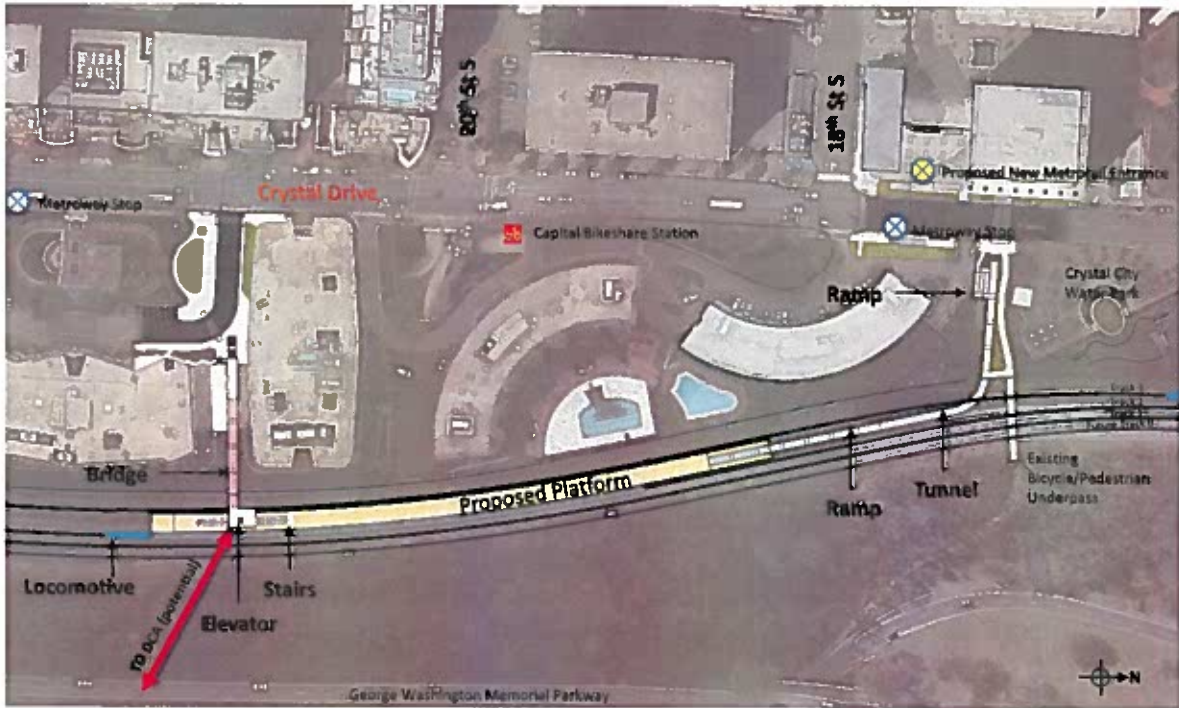


**ATTACHMENT - D**

**VIRGINIA RAILWAY EXPRESS – CONCEPT DESIGN**

**(ISSUED SEPARATELY)**



VIRGINIA RAILWAY EXPRESS

# CONCEPT DESIGN

- Elevated covered walkway to terrace
- Stairs to street/platform level; ADA access by elevators;
- Path aligns with existing crosswalk across Crystal Drive
- Parking removed and driveway narrowed for wider walkway



- Proposed **mid-block crossing** across Crystal Drive aligns with paths to VRE station and Mount Vernon trail
- Access to **proposed Metrorail entrance**
- **Separate pedestrian and bicycle paths** reduce conflicts and makes existing trail ADA accessible
- **Minimized impact** on existing Water Park design

## NORTH ENTRANCE

