

OJAI UNIFIED SCHOOL DISTRICT

BID ADDENDUM NO. 4 ISSUED 4/24/2019

TO THE CONTRACT DOCUMENTS, SPECIFICATIONS AND PLANS FOR OJAI UNIFIED SCHOOL DISTRICT

LIBRARY REMODEL AT NORDHOFF HIGH SCHOOL PROJECT NO. 2019-1714

THE BIDDER SHALL ATTACH THE ADDENDUM TO THE DOCUMENTS SUBMITTED WITH THE BID TO OJAI UNIFIED SCHOOL DISTRICT TO CERTIFY THAT THE BID ADDENDUM INFORMATION WAS RECEIVED.

BID DUE DATE: ~~10:00 am~~ 2:00 pm (local) Wednesday, May 1, 2019

The following additions, modifications, corrections, deletions and clarifications are hereby made to the Contract Documents of the subject Project and constitute **Addendum Number 4**. This Addendum is hereby incorporated into the contract documents by reference.

I. GENERAL INFORMATION

A. Contract Documents

Item 1 Geotechnical report uploaded.

II. REVISED SPECIFICATIONS AND DRAWINGS

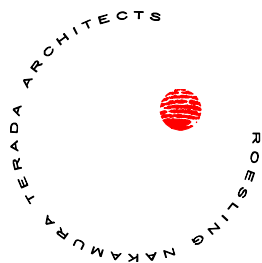
A. Specifications – All Projects

No change.

B. Drawings

LIBRARY REMODEL
AT NORDHOFF HIGH SCHOOL
PROJECT NO 2018-1714

ADDENDUM NO. 4



- Item 2 **AD-502 Roof Details** – Detail 10 revised to remove discrepancy with structural detail and show galvanization for frame.
- Item 3 **A-103 Reflected Ceiling Plan** – Drawing revised to coordinate with roof plan for tubular skylight located in Girls Restroom [19].

---- REVISED DOCUMENTS ATTACHED. ----

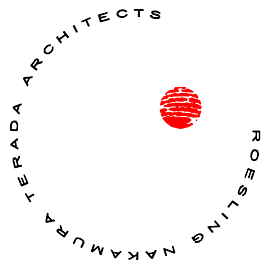
END OF **BID ADDENDUM NO. 4** ISSUED 4/24/2019

III. RESPONSES TO REQUESTS FOR INFORMATION

No.	QUESTION	RESPONSE	RESPONSE BY
1	Please note that the bid time currently indicated, 10:00 am, makes assembling bids, for all bidders, unnecessarily difficult as suppliers hold their quotes to subcontractors until the last minute before the bid time. Is changing the bid time to either 2:00 or 3:00 pm (which is typical) on the same date called for in the Invitation to Bid, May 1, 2019, a possibility?	The bid opening will now be at 2:00 pm. It cannot be pushed back farther due to the date the bid must be taken to the school board.	District
2	There are existing surface-mounted conduits exposed on the underside of the exterior soffits that are indicated to receive new metal soffit panels. Please advise on what is to be done with these conduits or to accommodate them in their current location.	Exterior conduits surface-mounted to the underside of the exterior soffits are not needed by known elements of the building contract and are expected to be demolished as part of the work.	RNT / Lucci & Associates
3	Detail 10/AD-502 indicates that the 3” dia. pipes in the roof screen framing are to be galvanized, but does NOT indicate that the HSS frames are to be galvanized. Please confirm that the HSS frames in the roof screen framing are NOT galvanized, or advise otherwise.	The roof screen frame should all be hot-dip galvanized. Detail 10/AD-502 revised accordingly. The metal panel finish is indicated in the specification.	RNT
4	There is a discrepancy in the size of the roof screen base plates shown in the two details	The Structural detail takes precedence. AD-502 revised to	RNT

LIBRARY REMODEL
 AT NORDHOFF HIGH SCHOOL
 PROJECT NO 2018-1714

ADDENDUM NO. 4



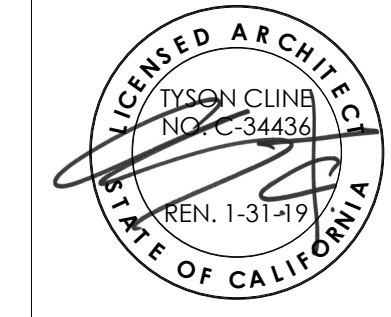
referenced above. 10/AD-502 shows a ¼"x5"x8" plate while 1/S-600B shows a ¼"x5"x10" plate. Please clarify the size of the base plates.

remove discrepancy.

5	There is a discrepancy between the quantity of Solatube Skylights shown on A-102 and A-103. A-102 shows two (2) skylights that are not shown on A-103. Please clarify the correct quantity of skylights and if A-102 is correct please clarify if each of the two skylights shown on A-102, and not on A-103, are either with Daylight Dimmer Kit or without.	The RCP has been revised to show a ceiling diffuser in the Gir's Restroom [19]. The tubular skylight in the English Department Storage Room [9] was shown on the plans, but there is no ceiling, so no separate ceiling diffuser. No Daylight dimmer kit provided for these two locations.	RNT
6	Is a 3rd party consultant required during asbestos and lead paint removal? If so, what are the requirements?	An EPA certified contractor is required as indicated in the contract language.	District
7	Please provide a spec for "Library" sign on the front of the trellis	The signage is to be painted steel.	RNT
8	Liqui-hard Ultra is a clear product. Some new patched trenches will be visible after the material is applied. Is this the intent?	This is the intention.	RNT
9	Please confirm that the oak trees remaining will be trimmed by the district. Addendum 3 states this, however at the site walk it was stated no.	The trees are to be trimmed by the District prior to the start of construction. Whether that work will appreciably increase site access remains to be seen.	RNT
10	Will the geotechnical report be made available?	Yes, it has now been uploaded.	District



Roesling Nakamura
Terada Architects
285 N Ventura Ave #102
Ventura, CA 93001
P805.626.5330
F805.626.5350
www.RNTArchitects.com



IDENTIFICATION STAMP
DIV. OF THE STATE ARCHITECT
OFFICE OF REGULATION SERVICES
FILE NO. 98-HB
03-118819
AC FLS SS
DATE

**OJAI
UNIFIED
SCHOOL
DISTRICT**

**NORDHOFF
HIGH SCHOOL
- LIBRARY
REMODEL**

1401 MARICOPA HWY.
OJAI, CA 93023

**CONSTRUCTION
DOCUMENTS**

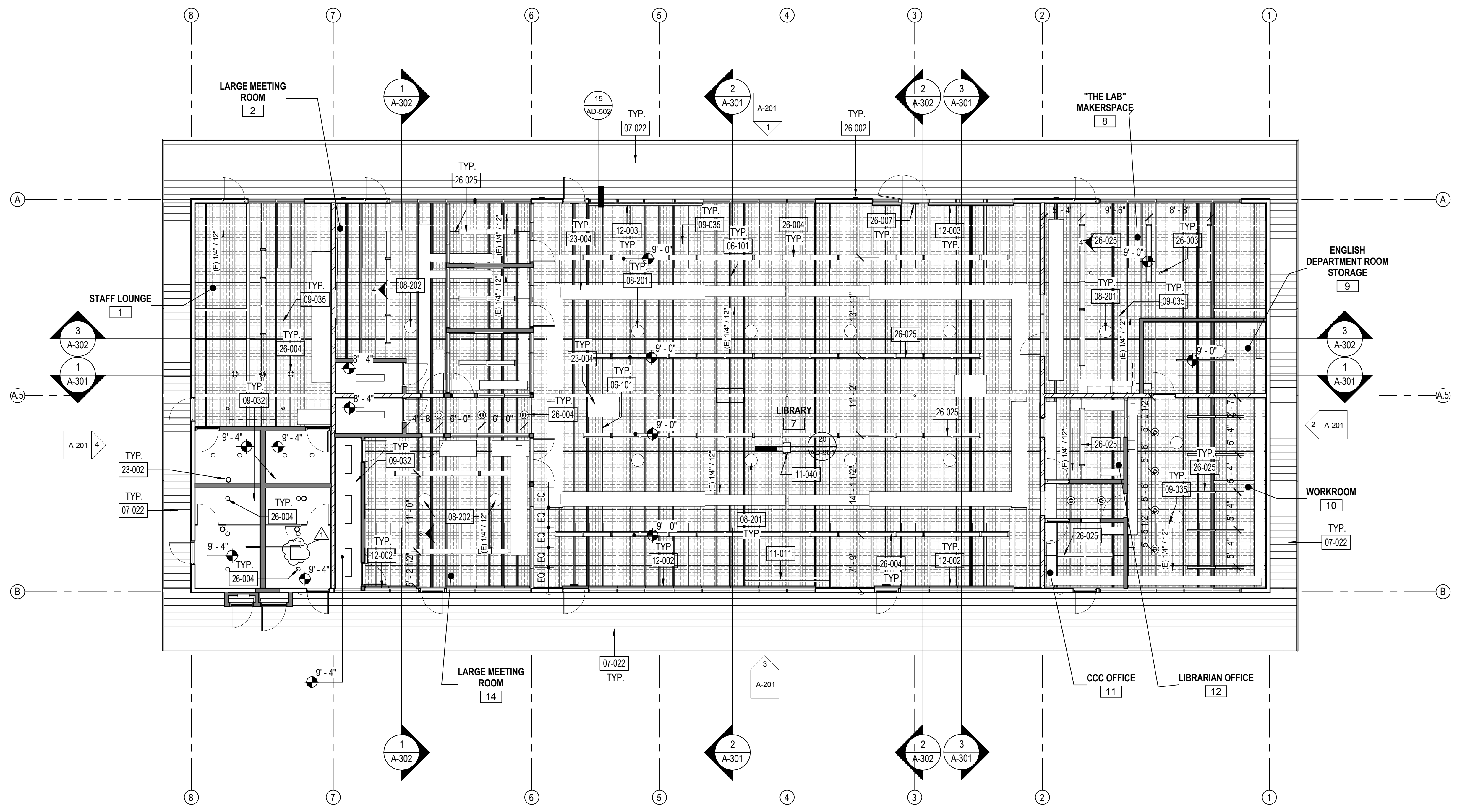
No.	Description	Date
1	BID ADD 01	4/18/2019

Sheet Name

**REFLECTED
CEILING PLAN**

17770.00
Date 04/12/18
Drawn by JR
Checked by CY
Sheet Number

A-103



REFLECTED CEILING PLAN
1/8" = 1'-0"
PLAN NORTH TRUE NORTH

GENERAL NOTES

- INSTALL ALL REQUIRED BACKING FOR FIXTURE SUPPORTS.
- PAINT ALL EXPOSED STEEL, PIPE, CONDUIT, AND DUCTWORK.
- DO NOT EXPOSE PIPES OR CONDUITS UNLESS SPECIFICALLY NOTED.
- REFER TO MECH. & PLUMB. FOR ADDITIONAL ACCESS PANEL.
- SAND, CLEAN, & PREP (E) WOOD RAFTERS. PAINT / STAIN.
- ALL PENDANT LIGHTING TO HAVE 8'-0" CLEARANCE FROM FINISH FLOOR UNLESS OTHERWISE INDICATED.
- REFER TO FLOOR PLAN FOR WINDOW AND DOOR TAGS.
- PAINT ACCESS PANELS TO MATCH ADJACENT FINISH.
- EQUALLY SPACE AND CENTER ALL LIGHTS FIXTURES U.N.O
- PLACEMENT OF TUBULAR SKYLIGHTS BASED ON BEST AVAILABLE INFORMATION. LOCATION OF ROOF FRAMING MEMBERS ASSUMED TO BE ACCURATE. VERIFY LOCATION OF TUBULAR SKYLIGHTS IN FIELD AND COORDINATE PLACEMENT WITH EXISTING CONDITIONS AND OTHER WORK TO AVOID OBSCURING SKYLIGHTS.
-

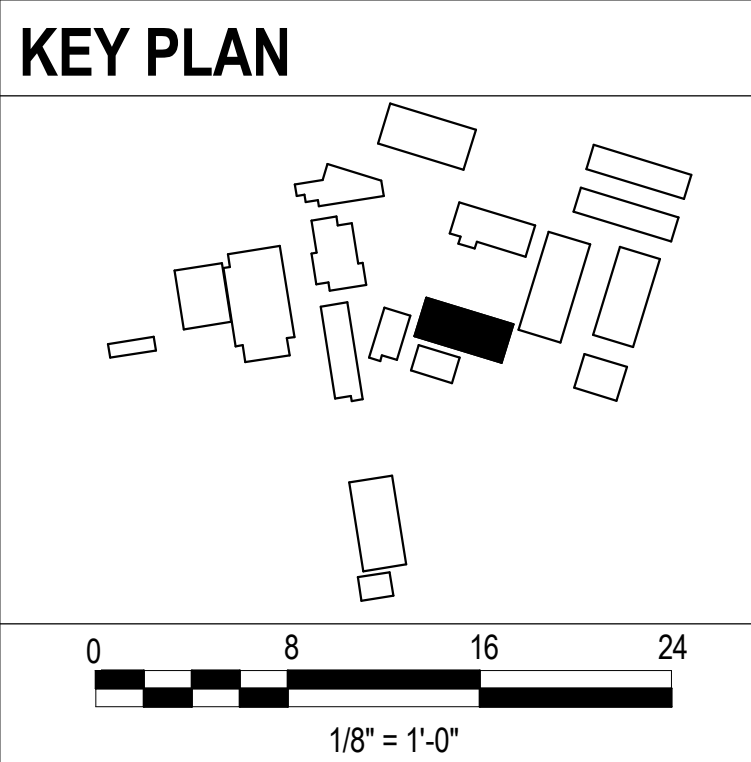
LEGEND

	SOUND ABSORBING CEILING CEILING UNITS
	GYP. BD. CEILING
	PENDANT MOUNTED LINEAR LIGHT FIXTURE
	PENDANT MOUNTED LIGHT FIXTURE
	PENDANT MOUNTED LIGHT FIXTURE
	DOWN LIGHT CAN

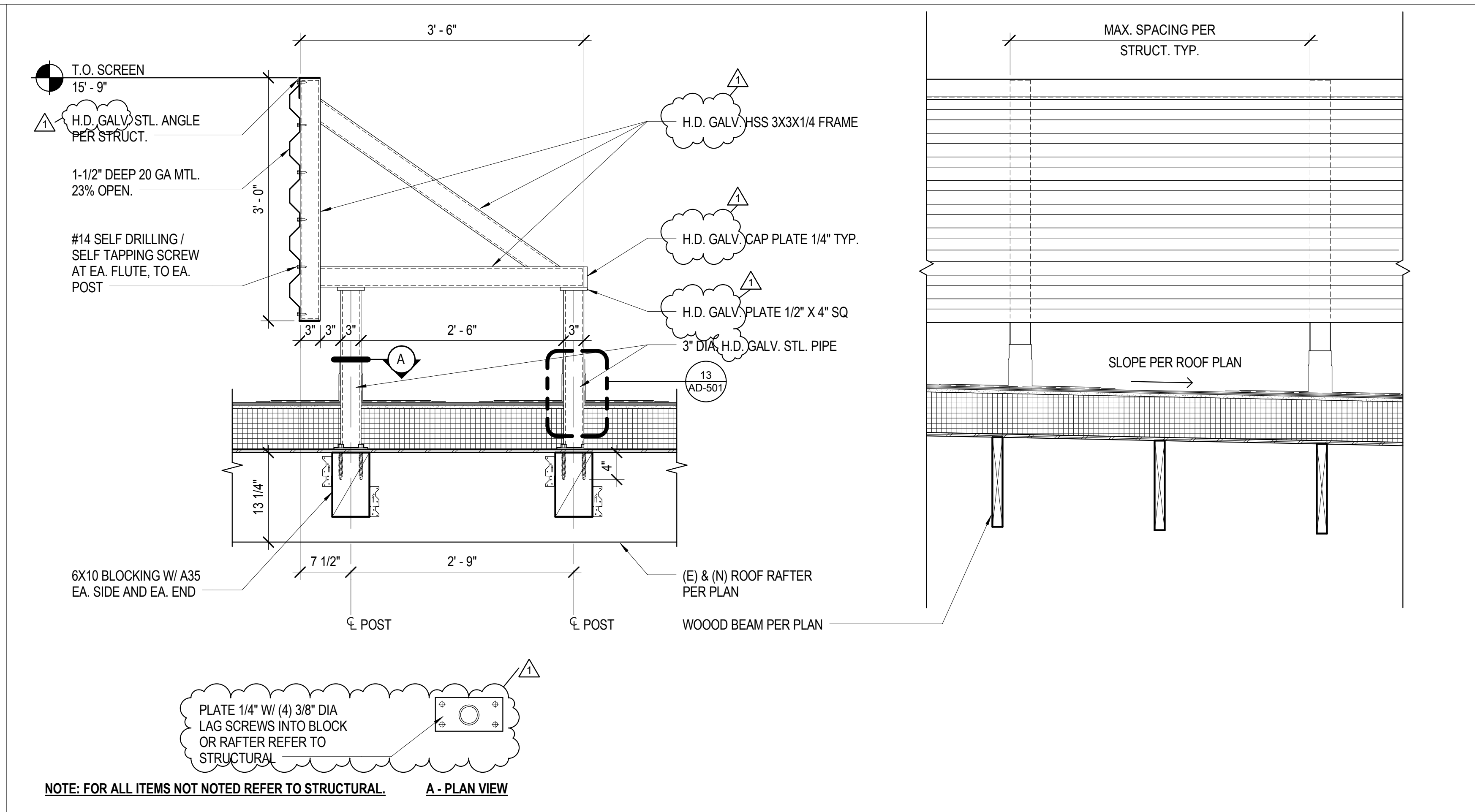
KEYNOTES

06-101	(E) WOOD RAFTERS, PAINT TO MATCH EXISTING COLOR
07-022	METAL SOFFIT PANELS, REFER TO 15/AD-502
08-201	SKYLIGHT
08-202	SKYLIGHT WITH DAYLIGHT DIMMER KIT
09-032	GYPSUM BOARD CEILING, PAINT PER FINISH SCHEDULE. REFER TO 5/AD-401 FOR TYP. INSTALL
09-035	SOUND ABSORBING CEILING UNITS, REFER TO 3/AD-401 FOR ATTACHMENT
11-011	PROJECTION SCREEN
11-040	PROJECTOR O.F.C.I.
12-002	ROLLER WINDOW SHADES, LIGHT FILTERING FABRIC.
12-003	ROLLER WINDOW SHADES, LIGHT BLOCKING FABRIC.
23-002	EXHAUST FAN, REFER TO MECHANICAL DRAWINGS

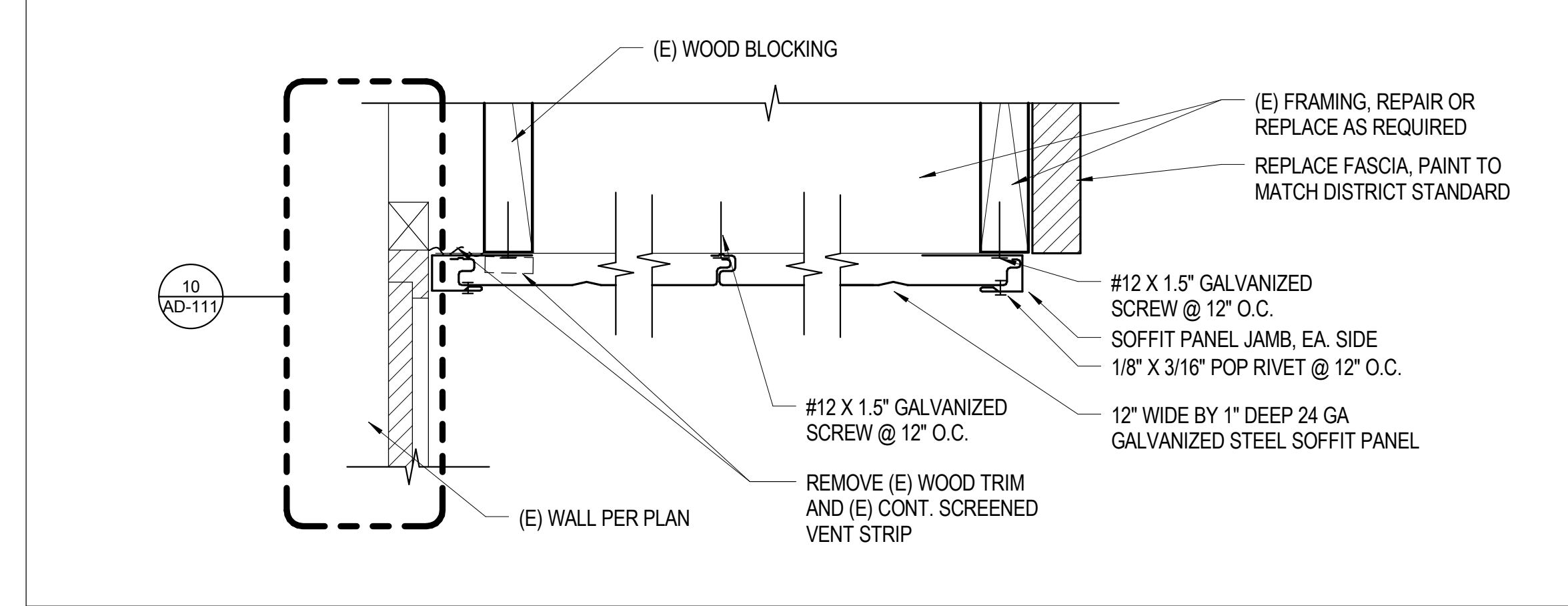
23-004	MECHANICAL DUCT, EXPOSED, REFER TO MECHANICAL DRAWINGS
26-002	WALL MOUNTED LIGHT FIXTURE, REFER TO ELECTRICAL DRAWINGS
26-003	DROP RECEPTACLE, REFER TO ELECTRICAL DRAWINGS
26-004	LIGHT FIXTURE INSTALL AT (E) LOCATION, REFER TO ELECTRICAL DRAWINGS
26-007	ELECTRONIC EXIT SIGN, REFER TO ELECTRICAL DRAWINGS
26-025	PENDANT LIGHT FIXTURE WITH SEISMIC BRACING, REFER TO 6/AD-901, 16/AD-901 FOR INTERNAL BRACING, AND ELECTRICAL DRAWINGS



C:\Users\YOUNG\Documents\770.00 Nordhoff Library_Young\marchitects.com.rvt



MECH. SCREEN @ ROOF 1" = 1'-0" **10**



METAL SOFFIT 3" = 1'-0" **15**



Roesling Nakamura Terada Architects
 285 N Ventura Ave #102
 Ventura, CA 93001
 805.626.5330
 805.626.5350
 www.RNTArchitects.com



IDENTIFICATION STAMP
 DIV. OF THE STATE ARCHITECT
 OFFICE OF REGULATION SERVICES
 FILE NO. 56-H8
03-118819
 AC _____ FLS _____ SS _____
 DATE _____

OJAI UNIFIED SCHOOL DISTRICT

NORDHOFF HIGH SCHOOL - LIBRARY REMODEL

1401 MARICOPA HWY.
 OJAI, CA 93023

CONSTRUCTION DOCUMENTS

No.	Description	Date
1	BID ADD 01	4/18/2019

Sheet Name

ROOF DETAILS

17770.00
 Date **04/05/18**
 Drawn by **Author**
 Checked by **Checker**
 Sheet Number

AD-502