



ADDENDUM NO. 3
TO THE CONTRACT DOCUMENTS

Date: May 14, 2021
Jacobs Project No.: D3403200

for the
Crestview WWTP Solids Handling Improvements

To All Plan Holders:

The following changes, additions are hereby made part of the Contract Documents for the Crestview WWTP Solids Handling Improvements Project, dated March 2021, as fully and completely as if the same set forth fully therein:

The following provides a summary of questions/comments and clarifications.

Specifications

A. PART 1. TECHNICAL SPECIFICATIONS

1. Section 23 09 13, entire section: CHANGE “20-HCP-01” TO “HCP-1”
2. Section 23 09 13, entire section: CHANGE “20-VMS-01” TO “VMS-1”
3. Section 44 42 13 Paragraph 2.17: DELETE subparagraph B and ADD the following subparagraph B in its place:

“B. Perform tests on all Floating Aerators actually furnished. Manufacturer may provide previously conducted Oxygen Transfer Performance Testing results for the same model aerator furnished.”

B. PART 2; DRAWINGS

1. Drawing 40-M-2001, INCORPORATE the attached Drawing 40-M-2001 markups.
2. Drawing 40-M-3001, INCORPORATE the attached Drawing 40-M-3001 markups.

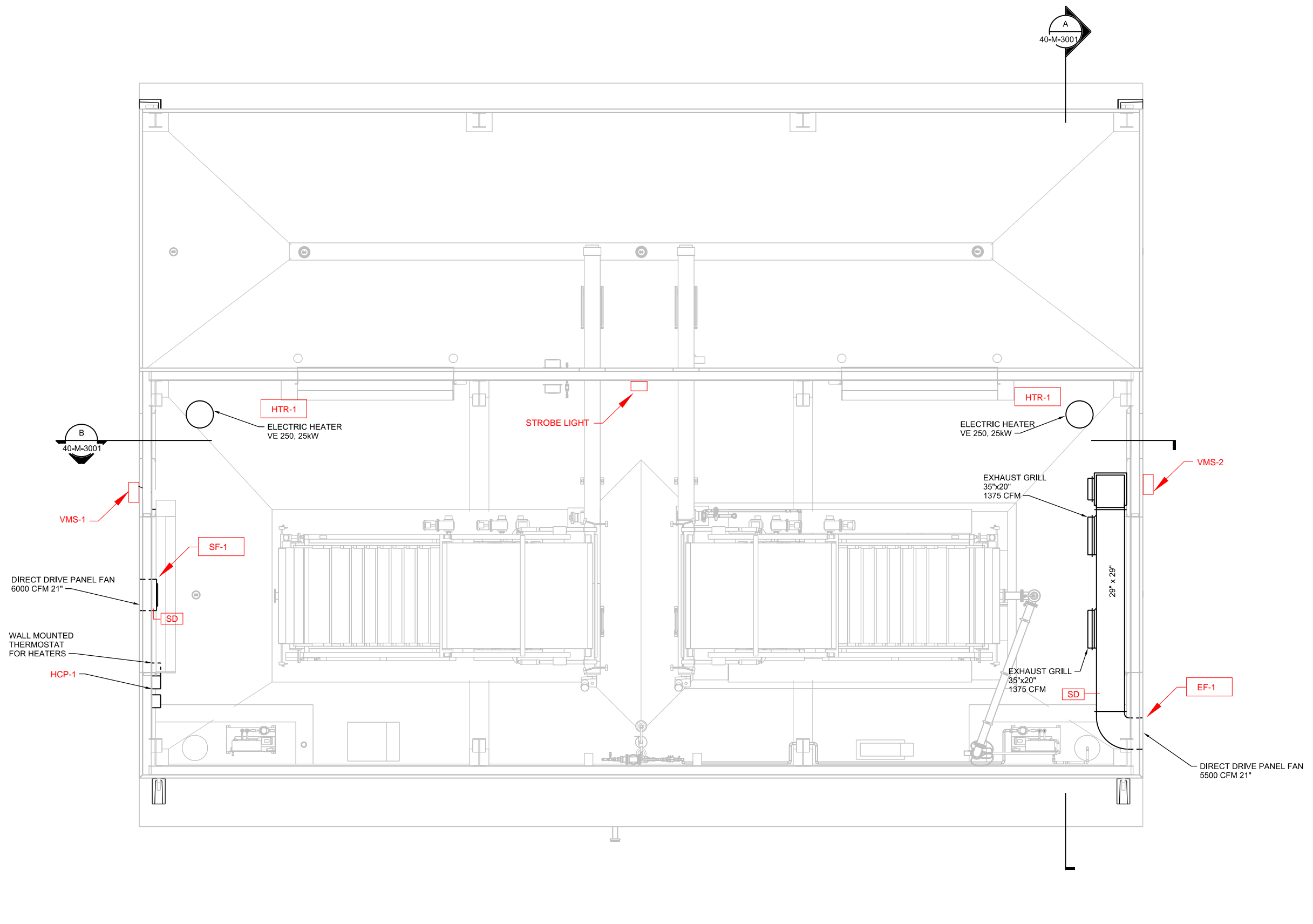
All Bidders shall acknowledge receipt of this Addendum.

JACOBS



Scott L. Jernigan, P.E.
Project Manager

Documents attached herein:
Revised Drawing 40-M-2001
Revised Drawing 40-M-3001



OVERALL PLAN VIEW
1/4"=1'-0"

25 W CEDAR STREET, SUITE 350
PENSACOLA, FLORIDA 32502
EB25881

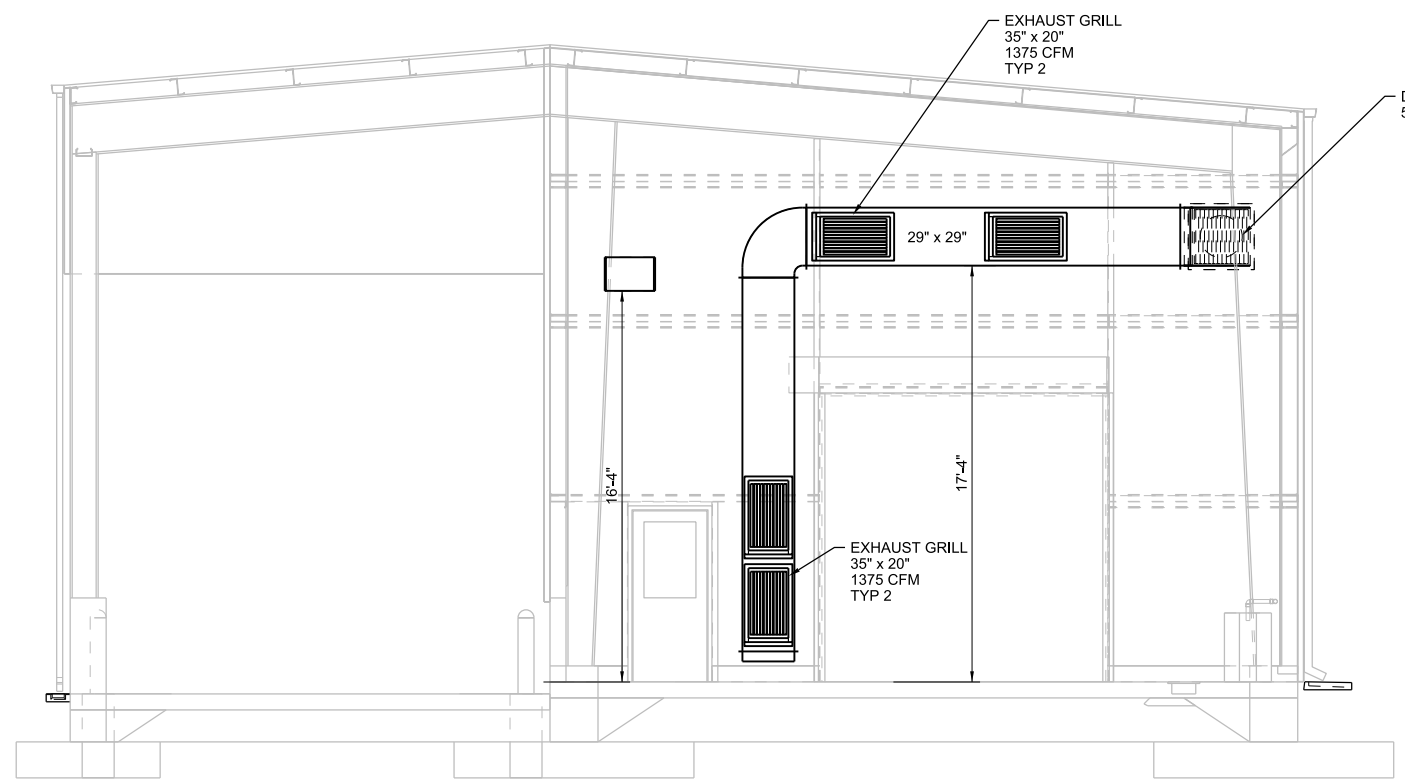
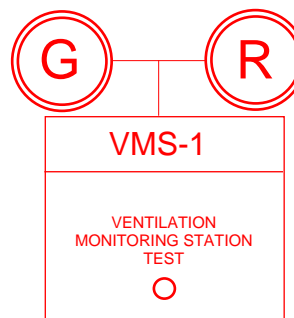
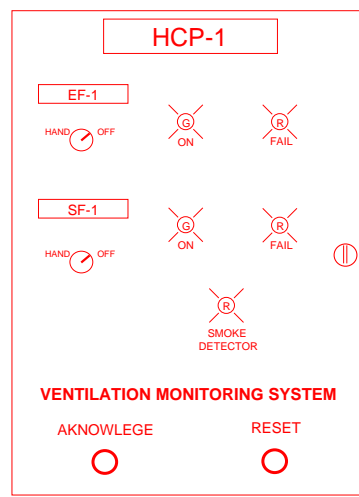
CRESTVIEW WWTP
SOLIDS HANDLING IMPROVEMENTS
CITY OF CRESTVIEW
CRESTVIEW, FL

JACOBS
BUILDING MECHANICAL
**DEWATERING BUILDING
FLOOR PLAN**

VERIFY SCALE	
BAR IS ONE INCH ON ORIGINAL DRAWING.	
DATE	MARCH 2021
PROJ	D3403200
DWG	40-M-2001
SHEET	53 of 76

NO.	DATE	DR	REVISION	BY
		J BIEDA		
		M MOLKA	CHK	APVD
				A VALIENTE

BID DOCUMENTS



A SECTION
1/4" = 1'-0"

DEWATERING BUILDING

- SUPPLY FAN SF-1
- EXHAUST FAN EF-1
- ELECTRIC SPACE HEATERS HTR-1

GENERAL:
THE SUPPLY FAN SF-1 AND EXHAUST FAN EF-1 SHALL RUN CONTINUOUSLY. THE SYSTEMS SHALL BE CONTROLLED VIA HAND/OFF SWITCHES LOCATED WITHIN PANEL HCP-1. THE ELECTRIC HEATERS SHALL BE CONTROLLED VIA WALL MOUNTED THERMOSTATS.

OPERATION (FANS SHALL BE INDEXED TO RUN CONTINUOUSLY):
EF-1 AND SF-1

- OFF: THE EXHAUST AND SUPPLY FANS SHALL REMAIN DE-ENERGIZED.
- HAND: THE EXHAUST AND SUPPLY FANS SHALL ENERGIZE AND RUN CONTINUOUSLY.

VENTILATION MONITORING

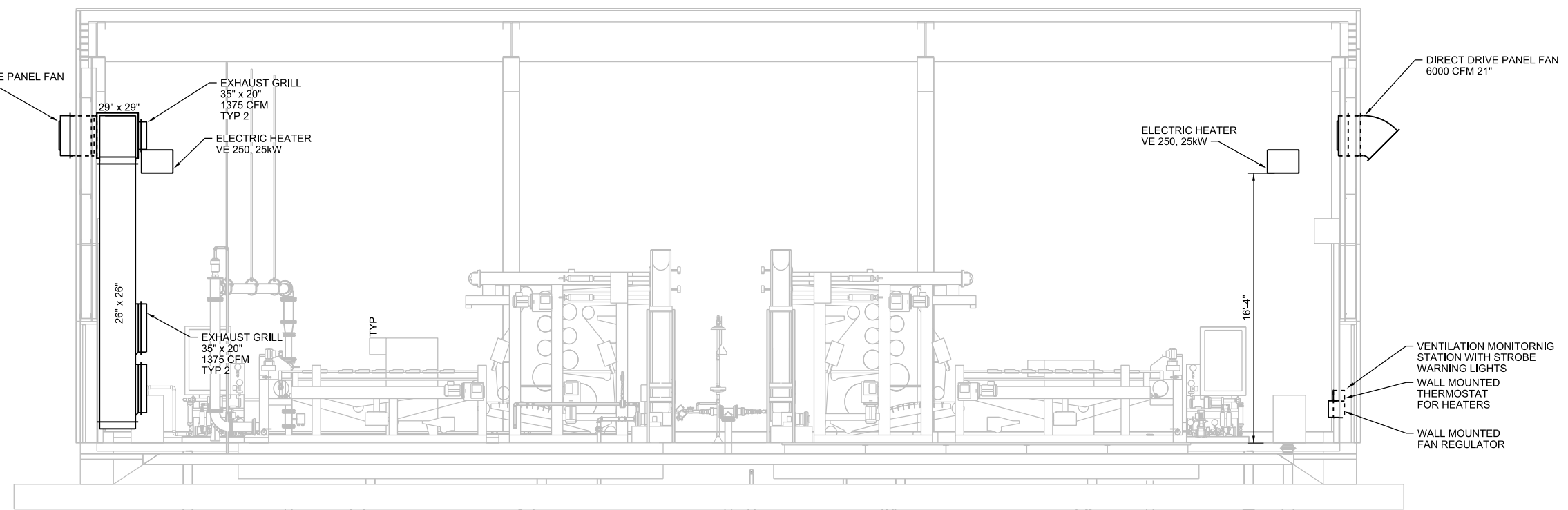
THE VENTILATION SYSTEM SHALL BE FITTED WITH VMS, STROBE LIGHTS AND CURRENT SWITCH TO MONITOR FAN OPERATION. STROBES AND MONITORING STATIONS SHALL BE LOOP-FEED FROM PANEL HCP-01. UPON FAN FAILURE A VISUAL AND AUDIBLE ALARMS SHALL BE ACTIVATED AS SHOWN ON DRAWINGS.

SMOKE DETECTION SHUTDOWN

ON A DETECTION OF PRODUCTS OF COMBUSTION BY THE DUCT MOUNTED SMOKE DETECTOR, THE SUPPLY AND EXHAUST FANS SHALL STOP. A VISIBLE ALARM IN HCP-1 SHALL BE ACTIVATED.

HTR-1

- WHEN THE TEMPERATURE IN THE SPACE IS UNDER THE HEATING SETPOINT TEMPERATURE (55 F ADJ), THE UNIT HEATERS SHALL ENERGIZE. AS THE TEMPERATURE SETPOINT IS SATISFIED THE HEATERS SHALL BE DE-ENERGIZED.



B SECTION
1/4" = 1'-0"

NO.	DATE	DR	CHK	BY	APVD
		J BIEDA	M MOLKA	A VALENTE	A VALENTE
		DSGN	REVISION	BY	APVD

25 W CEDAR STREET SUITE 350
PENSACOLA, FLORIDA 32502
EB25861

CRESTVIEW WWTP
SOLIDS HANDLING IMPROVEMENTS
CITY OF CRESTVIEW
CRESTVIEW, FL

JACOBS
BUILDING MECHANICAL
DEWATERING BUILDING
SECTIONS

VERIFY SCALE
BAR IS ONE INCH ON ORIGINAL DRAWING.
0 1"

DATE MARCH 2021
PROJ D3403200
DWG 40-M-3001
SHEET 54 of 76