

**NOTES**

- 1) THIS SURVEYOR HAS NOT PHYSICALLY LOCATED THE UNDERGROUND UTILITIES, ABOVE GRADE AND UNDERGROUND UTILITIES SHOWN WERE TAKEN FROM VISIBLE APPURTENANCES AT THE SITE, PUBLIC RECORDS AND/OR MAPS PREPARED BY OTHERS. THE SURVEYOR MAKES NO GUARANTEE THAT THE UNDERGROUND UTILITIES SHOWN COMPRISE ALL SUCH UTILITIES IN THE AREA, EITHER IN SERVICE OR ABANDONED. THE SURVEYOR FURTHER DOES NOT WARRANT THAT THE UNDERGROUND UTILITIES ARE IN THE EXACT LOCATION INDICATED, THEREFORE RELIANCE UPON THE TYPE, SIZE AND LOCATION OF UTILITIES SHOWN SHOULD BE DONE SO WITH THIS CIRCUMSTANCE CONSIDERED. DETAILED VERIFICATION OF EXISTENCE, LOCATION AND DEPTH SHOULD ALSO BE MADE PRIOR TO ANY DECISION RELATIVE THERETO IS MADE. AVAILABILITY AND COST OF SERVICE SHOULD BE CONFIRMED WITH THE APPROPRIATE UTILITY COMPANY. IN TENNESSEE, IT IS A REQUIREMENT, PER THE UNDERGROUND UTILITY DAMAGE PREVENTION ACT, THAT ANYONE WHO ENGAGES IN EXCAVATION MUST NOTIFY ALL KNOWN UNDERGROUND UTILITY OWNER, NO LESS THAN THREE (3) NOR MORE THAN TEN (10) WORKING DAYS PRIOR TO THE DATE OF THEIR INTENT TO EXCAVATE AND ALSO TO AVOID ANY POSSIBLE HAZARD OR CONFLICT. TENNESSEE 811-1-800-351-1111
- 2) THE WORD "CERTIFY" OR "CERTIFICATE" AS SHOWN AND USED HEREON MEANS EXPRESSION OF PROFESSIONAL OPINION REGARDING THE FACTS OF THE SURVEY AND DOES NOT CONSTITUTE A WARRANTY OR GUARANTEE, EXPRESSED OR IMPLIED.
- 3) BY MEANS OF GRAPHIC PLOTTING UPON FEDERAL EMERGENCY MANAGEMENT AGENCY FLOOD INSURANCE RATE MAP, COMMUNITY PANEL 47037C0351 H, DATED: 04-05-17, IT HAS BEEN DETERMINED THAT THE PARCEL DESCRIBED HEREON DOES LIE WITHIN A FLOOD HAZARD AREA, FLOOD ZONE: AE.
- 4) THIS SURVEY PREPARED FROM CURRENT DEED OF RECORD AND DOES NOT REPRESENT A TITLE SEARCH OR A GUARANTEE OF TITLE, AND IS SUBJECT TO ANY STATE OF FACTS A CURRENT AND ACCURATE TITLE SEARCH WILL REVEAL.
- 5) THIS PROPERTY IS CURRENTLY ZONED: CITY OF BELLE MEADE
- 6) ALL DISTANCES WERE MEASURED WITH E.D.M. EQUIPMENT AND HAVE BEEN ADJUSTED FOR TEMPERATURE.

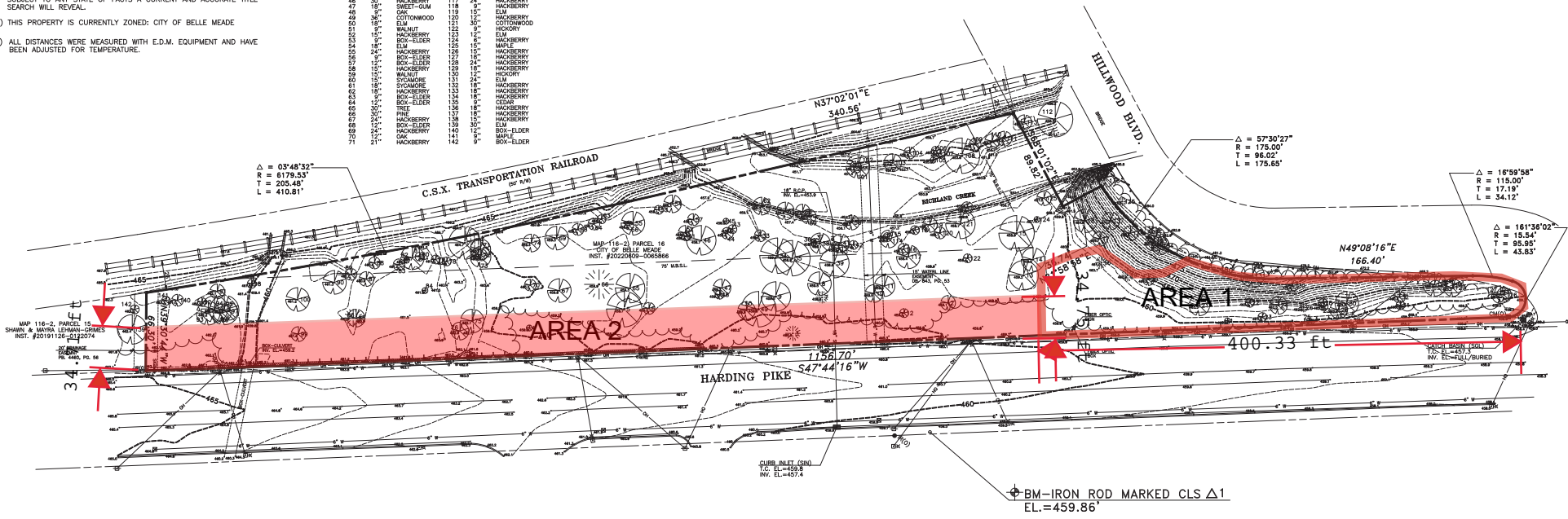
TREE TABLE			TREE TABLE		
NO.	SIZE	TYPE	NO.	SIZE	TYPE
1	8"	HACKBERRY	22	12"	HICKORY
2	8"	HACKBERRY	23	25"	HICKORY
3	15"	MAGNOLIA	24	18"	HACKBERRY
4	8"	TREE	25	25"	HACKBERRY
5	8"	COTTONWOOD	26	16"	HACKBERRY
6	12"	ELM	27	18"	HACKBERRY
7	12"	ELM	28	9"	HACKBERRY
8	12"	ELM	29	9"	HACKBERRY
9	12"	COTTONWOOD	30	9"	HACKBERRY
10	18"	COTTONWOOD	31	24"	HACKBERRY
11	24"	HACKBERRY	32	15"	HACKBERRY
12	30"	TREE	33	12"	HACKBERRY
13	30"	COTTONWOOD	34	12"	BOY-ELDER
14	24"	ASH	35	18"	DOG
15	24"	COTTONWOOD	36	18"	ASH
16	18"	ASH	37	18"	BOY-ELDER
17	12"	MAPLE	38	12"	BOY-ELDER
18	12"	ASH	39	18"	BOY-ELDER
19	12"	CEDAR	40	24"	SWEET-GUM
20	12"	HACKBERRY	41	15"	ELM
21	21"	ELM	42	9"	BOY-ELDER
22	8"	GAK	43	9"	STYAMORE
23	8"	GAK	44	15"	COTTONWOOD
24	18"	HACKBERRY	45	30"	COTTONWOOD
25	8"	GAK	46	18"	STYAMORE
26	9"	CEDAR	47	18"	BOY-ELDER
27	8"	HACKBERRY	48	18"	BOY-ELDER
28	8"	HACKBERRY	49	15"	MAPLE
29	24"	HACKBERRY	50	101"	BOY-ELDER
30	18"	GAK	51	12"	ASH
31	18"	HACKBERRY	52	24"	ASH
32	18"	HACKBERRY	53	18"	ASH
33	12"	MAPLE	54	12"	HACKBERRY
34	36"	TREE	55	6"	HACKBERRY
35	36"	STYAMORE	56	8"	HACKBERRY
36	8"	ELM	57	6"	HACKBERRY
37	18"	GAK	58	36"	STYAMORE
38	18"	HACKBERRY	59	12"	HACKBERRY
39	18"	HACKBERRY	60	15"	HACKBERRY
40	8"	GAK	61	11"	BOY-ELDER
41	18"	HACKBERRY	62	12"	HACKBERRY
42	8"	ELM	63	15"	HACKBERRY
43	12"	GAK	64	18"	HACKBERRY
44	12"	GAK	65	115"	DOG
45	12"	GAK	66	115"	DOG
46	12"	HACKBERRY	67	118"	HACKBERRY
47	18"	HACKBERRY	68	118"	HACKBERRY
48	18"	SWEET-GUM	69	9"	HACKBERRY
49	18"	HACKBERRY	70	112"	HACKBERRY
50	36"	COTTONWOOD	71	120"	COTTONWOOD
51	18"	WALNUT	72	122"	HICKORY
52	12"	HACKBERRY	73	12"	ELM
53	18"	BOY-ELDER	74	12"	HACKBERRY
54	18"	ELM	75	125"	MAPLE
55	18"	BOY-ELDER	76	127"	HACKBERRY
56	18"	BOY-ELDER	77	127"	HACKBERRY
57	18"	HACKBERRY	78	127"	HACKBERRY
58	15"	HACKBERRY	79	129"	HACKBERRY
59	18"	WALNUT	80	132"	HICKORY
60	18"	STYAMORE	81	132"	HACKBERRY
61	18"	HACKBERRY	82	132"	HACKBERRY
62	18"	HACKBERRY	83	134"	HACKBERRY
63	9"	BOY-ELDER	84	134"	HACKBERRY
64	9"	BOY-ELDER	85	137"	CEDAR
65	30"	TREE	86	136"	HACKBERRY
66	30"	TREE	87	137"	HACKBERRY
67	24"	HACKBERRY	88	136"	HACKBERRY
68	12"	BOY-ELDER	89	145"	BOY-ELDER
69	12"	GAK	90	145"	MAPLE
70	12"	GAK	91	141"	BOY-ELDER
71	21"	HACKBERRY	92	9"	BOY-ELDER

**GPS NOTE**

A Topcon GRS-1 GPS network rover utilizing the IDOT ONSS Reference Network to establish horizontal control, Tennessee State Plane Grid (NAD-83), and vertical control (NAVD-88) was used for this survey. A positional horizontal accuracy of one (1) centimeter or less and a GPS (Ortho Height) of two (2) centimeters or less may typically be relied upon.

**LEGEND**

- WATER VALVE ———— W
- WATER METER ———— M
- FIRE HOSE/INT ———— F
- IRON ROD OLD ———— I
- SIGN POST ———— S
- CATCH BASIN ———— CB
- BENCHMARK ———— B
- MANHOLE ———— M
- UTILITY POLE ———— U
- LIGHT POLE ———— L
- TREE ———— T
- PROPERTY LINE ———— P
- EDGE OF PAVEMENT ———— E
- EDGE OF CONC. ———— C
- WALL ———— W
- CURB ———— CU
- OVERHEAD UTILITY ———— O
- WATER LINE ———— W
- SEWER LINE ———— SA
- Gas LINE ———— G
- STORM SEWER/CLAVERT ———— ST
- CONTOUR LINE ———— 650
- FENCE LINE ———— X



**PLAT REFERENCE**

PART OF LOT 3, CALDWELL ACRES  
 PLAT BOOK 4460, PAGE 56  
 REGISTER'S OFFICE OF DAVIDSON COUNTY, TN

**DEED REFERENCE**

DEED INSTRUMENT No. 20220609-0065866  
 REGISTER'S OFFICE OF DAVIDSON COUNTY, TN  
 OWNER OF RECORD: CITY OF BELLE MEADE

**TOTAL AREA**

118,082 Sq. Ft. (2.71 ACRES ±)

I HEREBY CERTIFY THAT THIS IS A CATEGORY 1 SURVEY AND THE SURVEY WAS PERFORMED IN ACCORDANCE WITH THE CURRENT STANDARDS OF PRACTICE FOR SURVEYORS IN TENNESSEE AND THE UNADJUSTED CLOSURE IS AT LEAST 1:10,000.



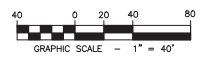
**CHERRY LAND SURVEYING, INC.**  
 622 WEST IRIS DRIVE  
 NASHVILLE, TENNESSEE 37204  
 (615)269-3072 FAX:(615)269-0345  
 E-MAIL: cherryls@comcast.net

MICHAEL H. CHARRETTE R.L.S. # 2048

**BOUNDARY AND TOPOGRAPHIC SURVEY OF**

**0 HARDING PIKE  
 MAP 116-2, PARCEL 16  
 CITY OF BELLE MEADE**

NASHVILLE, DAVIDSON COUNTY, TENNESSEE  
 SCALE: 1" = 40' - DATE: SEPTEMBER 8, 2023



JOB# 23083 MHC

# CALDWELL MEADOW

