

GEORGETOWN COUNTY

CONSTRUCTION PLANS FOR

MURRELLS INLET BIKE PATH PARKING LOT

ROADSIDE PARKING AND DRAINAGE IMPROVEMENTS ADJACENT TO HIGHWAY 17
NOVEMBER 2021



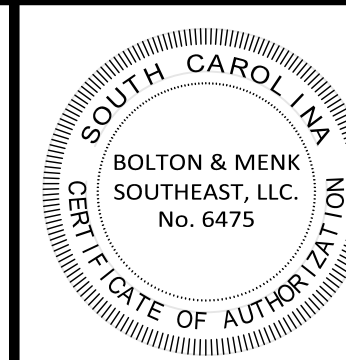
SHEET SCHEDULE

SHEET TITLE	SHEET NO.	ORIGINAL DATE	LATEST REVISION DATE
GENERAL			
TITLE SHEET	G1.01	NOVEMBER 19, 2021	JANUARY 23, 2023
CONSTRUCTION NOTES & LEGEND	G1.02	NOVEMBER 19, 2021	
CIVIL			
EXISTING CONDITIONS & DEMOLITION PLAN	C1.01	NOVEMBER 19, 2021	JANUARY 23, 2023
SEDIMENT AND EROSION CONTROL PLAN - PHASE 1 & 2	C2.01	NOVEMBER 19, 2021	JANUARY 23, 2023
SEDIMENT AND EROSION CONTROL PLAN - PHASE 3	C2.02	NOVEMBER 19, 2021	JANUARY 23, 2023
SEDIMENT AND EROSION CONTROL DETAILS	C2.03	NOVEMBER 19, 2021	DECEMBER 8, 2021
HORIZONTAL CONTROL PLAN	C3.01	NOVEMBER 19, 2021	DECEMBER 19, 2022
GRADING AND DRAINAGE PLAN	C4.01	NOVEMBER 19, 2021	JANUARY 23, 2023
DRAINAGE PROFILES	C4.02	NOVEMBER 19, 2021	JANUARY 23, 2023
SITE DETAILS	C4.03	NOVEMBER 19, 2021	DECEMBER 19, 2022
TRAFFIC CONTROL PLAN	C5.01	NOVEMBER 19, 2021	DECEMBER 19, 2022



GEORGETOWN COUNTY

**129 SCREVEN STREET
GEORGETOWN, SC 29442**



DDC Engineers
A BOLTON & MENK, INC. COMPANY
www.ddcinc.com

1298 PROFESSIONAL DRIVE
MYRTLE BEACH, SOUTH CAROLINA 29577
Phone: (843) 692-3200
Email: MyrtleBeach@bolton-menk.com
www.bolton-menk.com

DATE	NO.	DATE	REVISION DESCRIPTION	BY
11/19/21				
SCALE				
DESIGNED	TED			
DRAWN	ALL	3	1/23/2023	REVISED PER GCPW COMMENTS
CHECKED	JTW	2	12/19/2022	REVISED DRAINAGE ON LOT 5
		1	12/8/2021	REVISED PER COUNTY / SCDOT COMMENTS RECEIVED
CLIENT PROJ. NO.	21130			

GEORGETOWN COUNTY	SHEET
MURRELLS INLET BIKE PATH PARKING LOT	
GEORGETOWN COUNTY, SOUTH CAROLINA	
TITLE SHEET	G1.01

© Bolton & Menk, Inc. 2021. All Rights Reserved. H:\DDC\PROJ\21130\21130-CAD\DWG\21130-MI Bike Path Parking.dwg 1/23/2023 11:50:15 AM

PROJECT NAME: MURRELLS INLET BIKE PATH PARKING LOT

LEGEND

ABBREVIATIONS

GENERAL NOTES

EROSION CONTROL NOTES

Table listing existing and proposed symbols for property lines, lots, fences, and contours.

Table listing existing and proposed symbols for water/sewer lines, manholes, pipes, and valves.

Table listing existing and proposed symbols for drainage pipes, catch basins, and junction boxes.

Table listing existing and proposed symbols for various utility lines like electric, gas, and fiber optic.

Table listing existing and proposed symbols for signs, markings, transformers, and poles.

Main table of abbreviations for construction materials and equipment.

Table of abbreviations for construction materials and equipment (continued).

- Development shall comply with Georgetown County standards. Signage, landscaping and other monumentation shall be permitted... 20. THE PROPERTY IS LOCATED IN FLOOD ZONE 'AE' AND 'X' AS SHOWN ON FLOOD INSURANCE RATE MAP...

- Disturbed Area: ± 0.4 acres. If necessary, slopes, which exceed eight (8) vertical feet should be stabilized with synthetic or vegetative mats... STABILIZATION MEASURES SHALL BE INITIATED AS SOON AS PRACTICABLE...

GRADING AND DRAINAGE NOTES

- RIM ELEVATIONS REPRESENT FINISH GRADE ELEVATION WHERE APPLICABLE. CURB INLETS NOTE EOP GRADE CENTERED ON STRUCTURE AT EDGE OF PAVEMENT... 17. VERTICAL CONTROL BASED ON THE NORTH AMERICAN VERTICAL DATUM, NAVD1988.

HATCHES

Table showing hatching patterns for earth, wetland, concrete, rip-rap, and pavement.

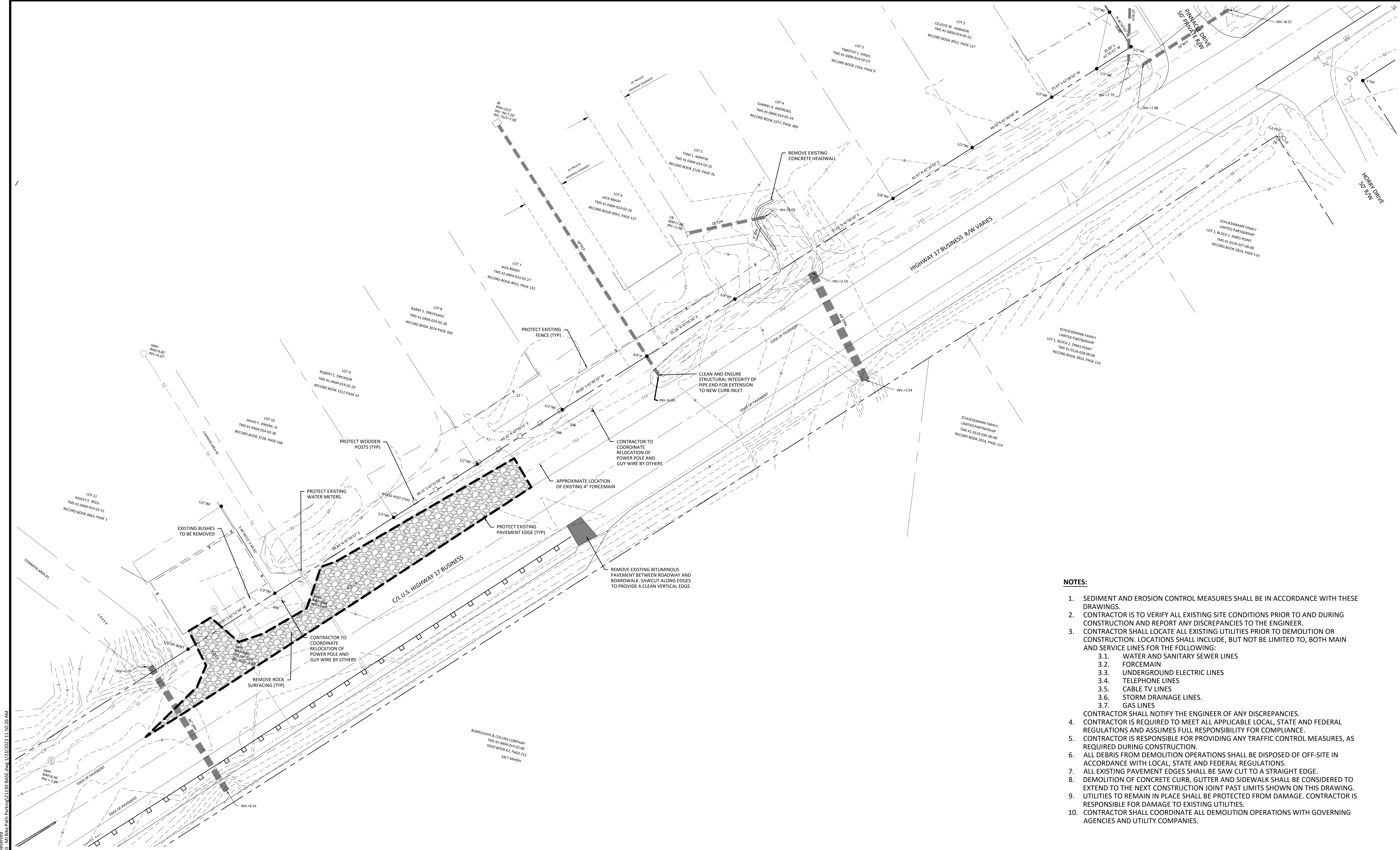


DDC Engineers logo and contact information: 1298 PROFESSIONAL DRIVE, MYRTLE BEACH, SOUTH CAROLINA 29577.

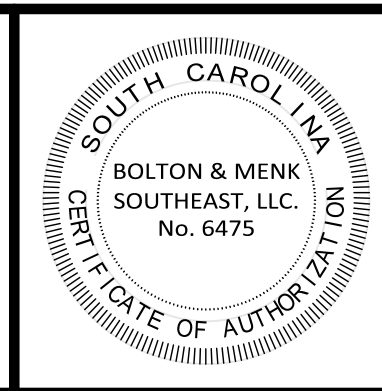
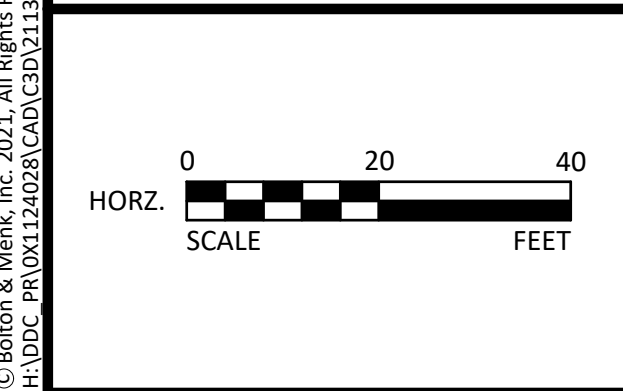
Revision table with columns for NO., DATE, REVISION DESCRIPTION, and BY.

Project title block: GEORGETOWN COUNTY, MURRELLS INLET BIKE PATH PARKING LOT, SHEET G1.02, CONSTRUCTION NOTES & LEGEND.

© Bolton & Menk, Inc. 2021. All Rights Reserved. File: DDC - (R)00124028 CAD/CD/21130 - Mt Bike Path Parking G1.02 COVER.dwg 1/23/2023 11:50:17 AM



- NOTES:**
- SEDIMENT AND EROSION CONTROL MEASURES SHALL BE IN ACCORDANCE WITH THESE DRAWINGS.
 - CONTRACTOR IS TO VERIFY ALL EXISTING SITE CONDITIONS PRIOR TO AND DURING CONSTRUCTION AND REPORT ANY DISCREPANCIES TO THE ENGINEER.
 - CONTRACTOR SHALL LOCATE ALL EXISTING UTILITIES PRIOR TO DEMOLITION OR CONSTRUCTION. LOCATIONS SHALL INCLUDE, BUT NOT BE LIMITED TO, BOTH MAIN AND SERVICE LINES FOR THE FOLLOWING:
 1. WATER AND SANITARY SEWER LINES
 2. FORCEMAIN
 3. UNDERGROUND ELECTRIC LINES
 4. TELEPHONE LINES
 5. CABLE TV LINES
 6. STORM DRAINAGE LINES.
 7. GAS LINES
 - CONTRACTOR SHALL NOTIFY THE ENGINEER OF ANY DISCREPANCIES.
 - CONTRACTOR IS REQUIRED TO MEET ALL APPLICABLE LOCAL, STATE AND FEDERAL REGULATIONS AND ASSUMES FULL RESPONSIBILITY FOR COMPLIANCE.
 - CONTRACTOR IS RESPONSIBLE FOR PROVIDING ANY TRAFFIC CONTROL MEASURES, AS REQUIRED DURING CONSTRUCTION.
 - ALL DEBRIS FROM DEMOLITION OPERATIONS SHALL BE DISPOSED OF OFF-SITE IN ACCORDANCE WITH LOCAL, STATE AND FEDERAL REGULATIONS.
 - ALL EXISTING PAVEMENT EDGES SHALL BE SAW CUT TO A STRAIGHT EDGE.
 - DEMOLITION OF CONCRETE CURB, GUTTER AND SIDEWALK SHALL BE CONSIDERED TO EXTEND TO THE NEXT CONSTRUCTION JOINT PAST LIMITS SHOWN ON THIS DRAWING.
 - UTILITIES TO REMAIN IN PLACE SHALL BE PROTECTED FROM DAMAGE. CONTRACTOR IS RESPONSIBLE FOR DAMAGE TO EXISTING UTILITIES.
 - CONTRACTOR SHALL COORDINATE ALL DEMOLITION OPERATIONS WITH GOVERNING AGENCIES AND UTILITY COMPANIES.



DDC Engineers
 A BOLTON & MENK, INC. COMPANY
www.ddcinc.com

1298 PROFESSIONAL DRIVE
 MYRTLE BEACH, SOUTH CAROLINA 29577
 Phone: (843) 692-3200
 Email: MyrtleBeach@bolton-menk.com
www.bolton-menk.com

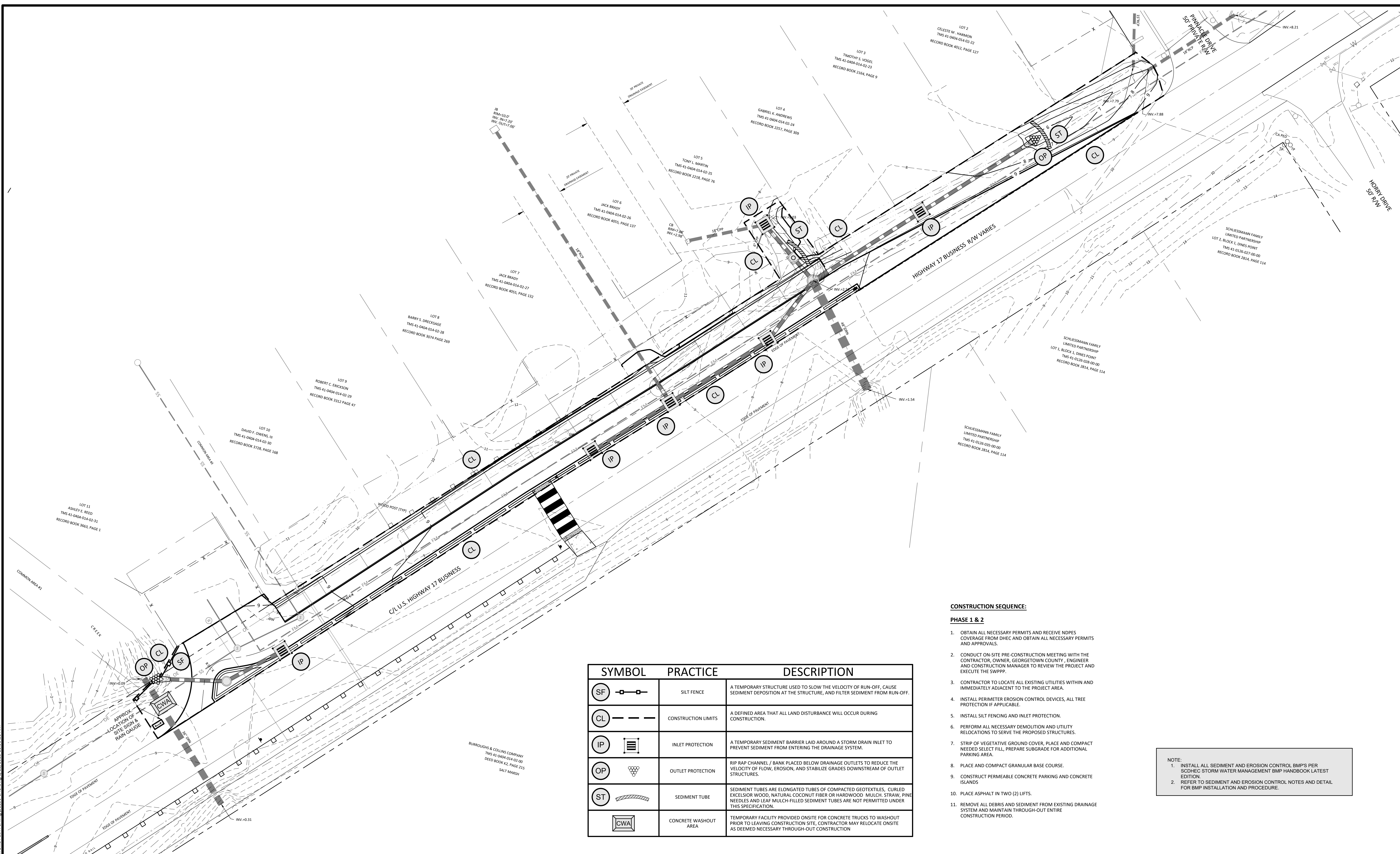
DATE	NO.	DATE	REVISION DESCRIPTION	BY
11/19/21				
SCALE				
DESIGNED	TED			
DRAWN	ALL			
CHECKED	JTW	2	12/19/2022	REVISED DRAINAGE ON LOT 5
CLIENT PROJ. NO.	21130	1	12/8/2021	REVISED PER COUNTY / SCDOT COMMENTS RECEIVED

GEORGETOWN COUNTY
 MURRELLS INLET BIKE PATH PARKING LOT
 GEORGETOWN COUNTY, SOUTH CAROLINA

EXISTING CONDITIONS & DEMOLITION PLAN

SHEET **C1.01**

© Bolton & Menk, Inc. 2021. All Rights Reserved. H:\DDC\10\1124208\CAD\CAD\CD\21130 - MI Bike Path Parking\21130-Base.dwg, 1/21/2023 11:50:26 AM



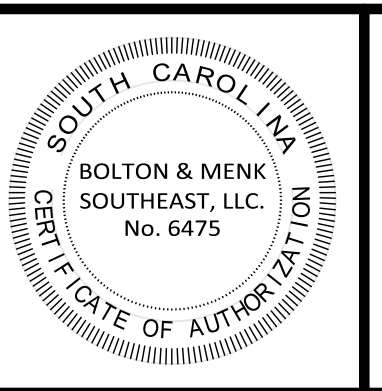
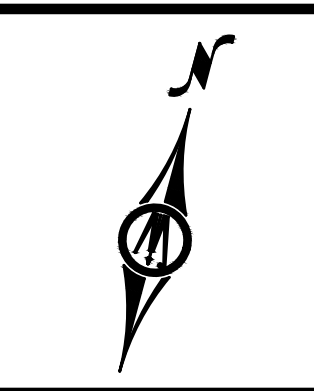
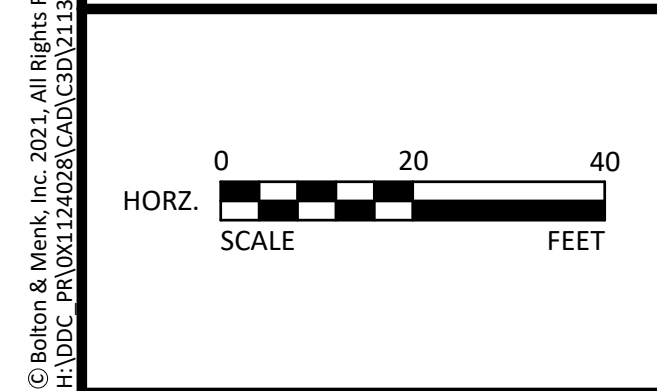
SYMBOL	PRACTICE	DESCRIPTION
	SILT FENCE	A TEMPORARY STRUCTURE USED TO SLOW THE VELOCITY OF RUN-OFF, CAUSE SEDIMENT DEPOSITION AT THE STRUCTURE, AND FILTER SEDIMENT FROM RUN-OFF.
	CONSTRUCTION LIMITS	A DEFINED AREA THAT ALL LAND DISTURBANCE WILL OCCUR DURING CONSTRUCTION.
	INLET PROTECTION	A TEMPORARY SEDIMENT BARRIER LAID AROUND A STORM DRAIN INLET TO PREVENT SEDIMENT FROM ENTERING THE DRAINAGE SYSTEM.
	OUTLET PROTECTION	RIP RAP CHANNEL / BANK PLACED BELOW DRAINAGE OUTLETS TO REDUCE THE VELOCITY OF FLOW, EROSION, AND STABILIZE GRADES DOWNSTREAM OF OUTLET STRUCTURES.
	SEDIMENT TUBE	SEDIMENT TUBES ARE ELONGATED TUBES OF COMPACTED GEOTEXTILES, CURLED EXCESSOR WOOD, NATURAL COCONUT FIBER OR HARDWOOD MULCH, STRAW, PINE NEEDLES AND LEAF MULCH-FILLED SEDIMENT TUBES ARE NOT PERMITTED UNDER THIS SPECIFICATION.
	CONCRETE WASHOUT AREA	TEMPORARY FACILITY PROVIDED ONSITE FOR CONCRETE TRUCKS TO WASHOUT PRIOR TO LEAVING CONSTRUCTION SITE, CONTRACTOR MAY RELOCATE ONSITE AS DEEMED NECESSARY THROUGH-OUT CONSTRUCTION.

CONSTRUCTION SEQUENCE:

PHASE 1 & 2

- OBTAIN ALL NECESSARY PERMITS AND RECEIVE NDPS COVERAGE FROM DHEC AND OBTAIN ALL NECESSARY PERMITS AND APPROVALS.
- CONDUCT ON-SITE PRE-CONSTRUCTION MEETING WITH THE CONTRACTOR, OWNER, GEORGETOWN COUNTY, ENGINEER AND CONSTRUCTION MANAGER TO REVIEW THE PROJECT AND EXECUTE THE SWPPP.
- CONTRACTOR TO LOCATE ALL EXISTING UTILITIES WITHIN AND IMMEDIATELY ADJACENT TO THE PROJECT AREA.
- INSTALL PERIMETER EROSION CONTROL DEVICES, ALL TREE PROTECTION IF APPLICABLE.
- INSTALL SILT FENCING AND INLET PROTECTION.
- PERFORM ALL NECESSARY DEMOLITION AND UTILITY RELOCATIONS TO SERVE THE PROPOSED STRUCTURES.
- STRIP OF VEGETATIVE GROUND COVER, PLACE AND COMPACT NEEDED SELECT FILL, PREPARE SUBGRADE FOR ADDITIONAL PARKING AREA.
- PLACE AND COMPACT GRANULAR BASE COURSE.
- CONSTRUCT PERMEABLE CONCRETE PARKING AND CONCRETE ISLANDS.
- PLACE ASPHALT IN TWO (2) LIFTS.
- REMOVE ALL DEBRIS AND SEDIMENT FROM EXISTING DRAINAGE SYSTEM AND MAINTAIN THROUGH-OUT ENTIRE CONSTRUCTION PERIOD.

NOTE:
 1. INSTALL ALL SEDIMENT AND EROSION CONTROL BMP'S PER SCDHCC STORM WATER MANAGEMENT BMP HANDBOOK LATEST EDITION.
 2. REFER TO SEDIMENT AND EROSION CONTROL NOTES AND DETAIL FOR BMP INSTALLATION AND PROCEDURE.



DDC Engineers
 A BOLTON & MENK, INC. COMPANY
 www.ddcinc.com

1298 PROFESSIONAL DRIVE
 MYRTLE BEACH, SOUTH CAROLINA 29577
 Phone: (843) 692-3200
 Email: MyrtleBeach@bolton-menk.com
 www.bolton-menk.com

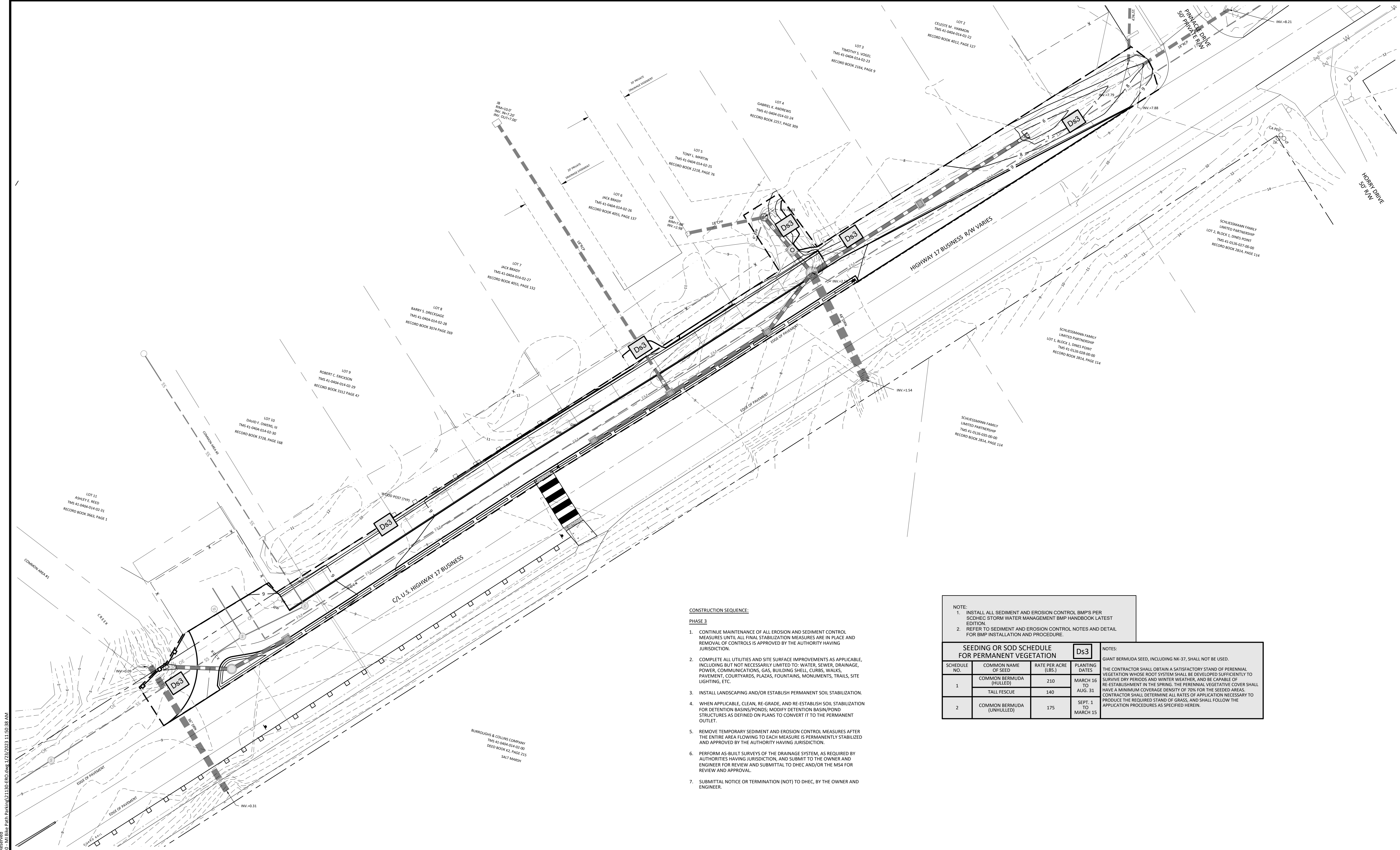
DATE	11/19/21				
SCALE	1" = 20'				
DESIGNED	TED				
DRAWN	ALL	3	1/23/2023	REVISED PER GCPW COMMENTS	TED
CHECKED	JTW	2	12/19/2022	REVISED DRAINAGE ON LOT 5	TED
		1	12/8/2021	REVISED PER COUNTY / SCDOT COMMENTS RECEIVED	TED
CLIENT PROJ. NO.	21130	NO.	DATE	REVISION DESCRIPTION	BY

GEORGETOWN COUNTY
 MURRELLS INLET BIKE PATH PARKING LOT
 GEORGETOWN COUNTY, SOUTH CAROLINA

SEDIMENT AND EROSION CONTROL PLAN
 - PHASE 1 & 2

SHEET C2.01

© Bolton & Menk, Inc. 2021. All Rights Reserved.
 H:\DDC\PROJECTS\2028\CAD\CADD\CADD\1130 - MI Bike Path Parking\1130-FRD.dwg, 1/23/2023, 11:50:33 AM



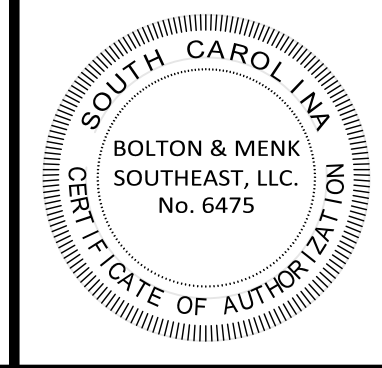
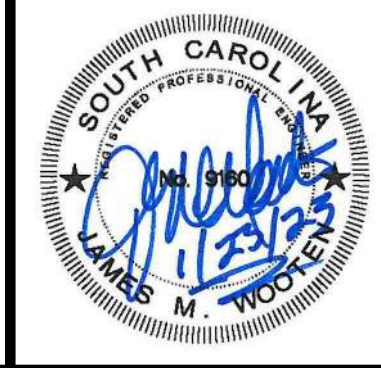
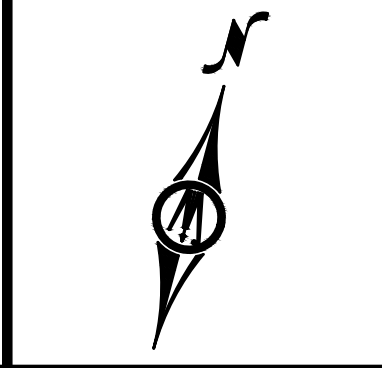
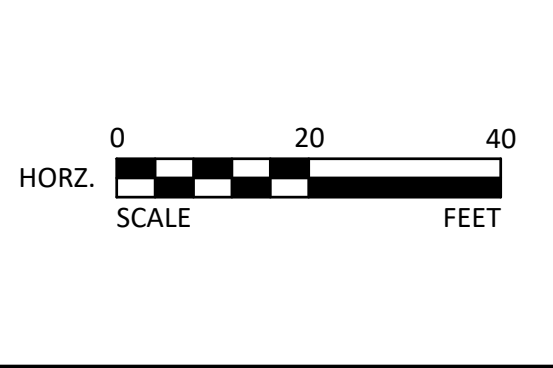
- CONSTRUCTION SEQUENCE:**
- PHASE 3**
- CONTINUE MAINTENANCE OF ALL EROSION AND SEDIMENT CONTROL MEASURES UNTIL ALL FINAL STABILIZATION MEASURES ARE IN PLACE AND REMOVAL OF CONTROLS IS APPROVED BY THE AUTHORITY HAVING JURISDICTION.
 - COMPLETE ALL UTILITIES AND SITE SURFACE IMPROVEMENTS AS APPLICABLE, INCLUDING BUT NOT NECESSARILY LIMITED TO: WATER, SEWER, DRAINAGE, POWER, COMMUNICATIONS, GAS, BUILDING SHELL, CURBS, WALKS, PAVEMENT, COURTYARDS, PLAZAS, FOUNTAINS, MONUMENTS, TRAILS, SITE LIGHTING, ETC.
 - INSTALL LANDSCAPING AND/OR ESTABLISH PERMANENT SOIL STABILIZATION.
 - WHEN APPLICABLE, CLEAN, RE-GRADE, AND RE-ESTABLISH SOIL STABILIZATION FOR DETENTION BASINS/PONDS; MODIFY DETENTION BASIN/POND STRUCTURES AS DEFINED ON PLANS TO CONVERT IT TO THE PERMANENT OUTLET.
 - REMOVE TEMPORARY SEDIMENT AND EROSION CONTROL MEASURES AFTER THE ENTIRE AREA FLOWING TO EACH MEASURE IS PERMANENTLY STABILIZED AND APPROVED BY THE AUTHORITY HAVING JURISDICTION.
 - PERFORM AS-BUILT SURVEYS OF THE DRAINAGE SYSTEM, AS REQUIRED BY AUTHORITIES HAVING JURISDICTION, AND SUBMIT TO THE OWNER AND ENGINEER FOR REVIEW AND SUBMITTAL TO DHEC AND/OR THE MS4 FOR REVIEW AND APPROVAL.
 - SUBMITTAL NOTICE OR TERMINATION (NOT) TO DHEC, BY THE OWNER AND ENGINEER.

NOTE:
 1. INSTALL ALL SEDIMENT AND EROSION CONTROL BMP'S PER SCDHEC STORM WATER MANAGEMENT BMP HANDBOOK LATEST EDITION.
 2. REFER TO SEDIMENT AND EROSION CONTROL NOTES AND DETAIL FOR BMP INSTALLATION AND PROCEDURE.

SEEDING OR SOD SCHEDULE FOR PERMANENT VEGETATION			Ds3
SCHEDULE NO.	COMMON NAME OF SEED	RATE PER ACRE (LBS.)	PLANTING DATES
1	COMMON BERMUDA (HULLED)	210	MARCH 16 TO AUG. 31
	TALL FESCUE	140	
2	COMMON BERMUDA (UNHULLED)	175	SEPT. 1 TO MARCH 15

NOTES:
 GIANT BERMUDA SEED, INCLUDING NK-37, SHALL NOT BE USED.
 THE CONTRACTOR SHALL OBTAIN A SATISFACTORY STAND OF PERENNIAL VEGETATION WHOSE ROOT SYSTEM SHALL BE DEVELOPED SUFFICIENTLY TO SURVIVE DRY PERIODS AND WINTER WEATHER, AND BE CAPABLE OF RE-ESTABLISHMENT IN THE SPRING. THE PERENNIAL VEGETATIVE COVER SHALL HAVE A MINIMUM COVERAGE DENSITY OF 70% FOR THE SEEDING AREAS. CONTRACTOR SHALL DETERMINE ALL RATES OF APPLICATION NECESSARY TO PRODUCE THE REQUIRED STAND OF GRASS, AND SHALL FOLLOW THE APPLICATION PROCEDURES AS SPECIFIED HEREIN.

© Bolton & Menk, Inc. 2021. All Rights Reserved.
 H:\DDC\19\01124208\CAD\CAD\1130 - Murrells Inlet Bike Path Parking\1130-ERD.dwg, 1/23/2023 11:50:38 AM



DDC Engineers
 A BOLTON & MENK, INC. COMPANY
www.ddcinc.com

1298 PROFESSIONAL DRIVE
 MYRTLE BEACH, SOUTH CAROLINA 29577
 Phone: (843) 692-3200
 Email: MyrtleBeach@bolton-menk.com
www.bolton-menk.com

DATE	NO.	DATE	REVISION DESCRIPTION	BY
11/19/21				
DESIGNED	TED			
DRAWN	ALL	3	1/23/2023	REVISED PER GCPW COMMENTS
CHECKED	JTW	2	12/19/2022	REVISED DRAINAGE ON LOT 5
CLIENT PROJ. NO.	21130	1	12/8/2021	REVISED PER COUNTY / SCDOT COMMENTS RECEIVED

GEORGETOWN COUNTY
 MURRELLS INLET BIKE PATH PARKING LOT
 GEORGETOWN COUNTY, SOUTH CAROLINA

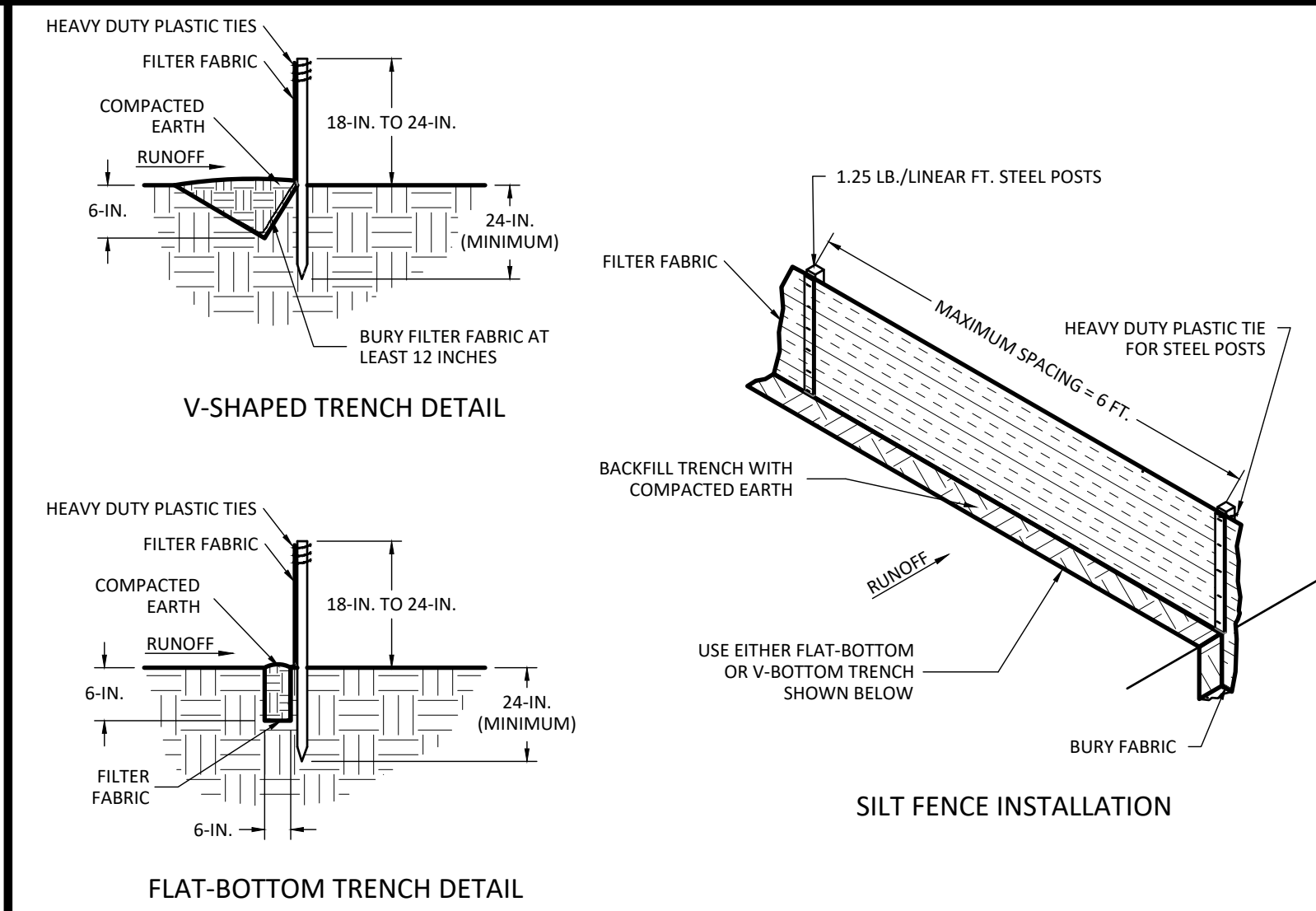
SEDIMENT AND EROSION CONTROL PLAN -
 PHASE 3

SHEET
C2.02

REFER TO THE FOLLOWING SCDOT STANDARD DRAWINGS FOR FURTHER EROSION AND SEDIMENT CONTROL DETAILS.

- 804-305
- 815-605

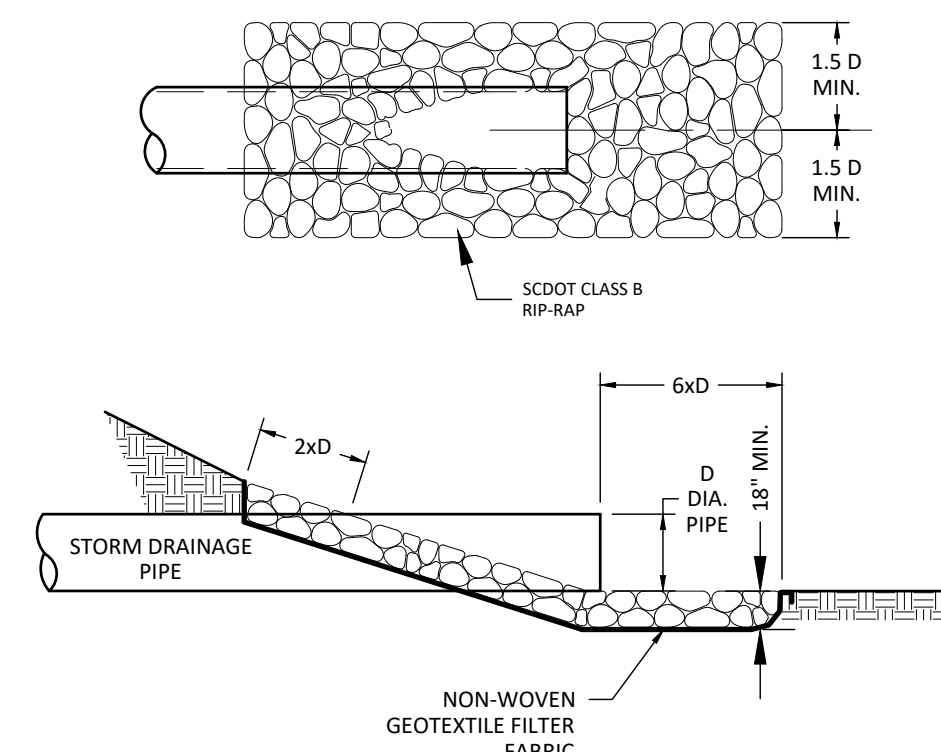
CONTRACTOR TO INSTALL SEDIMENT AND EROSION CONTROL BMP'S PER SCDHEC STORMWATER MANAGEMENT BMP HANDBOOK LATEST EDITION.



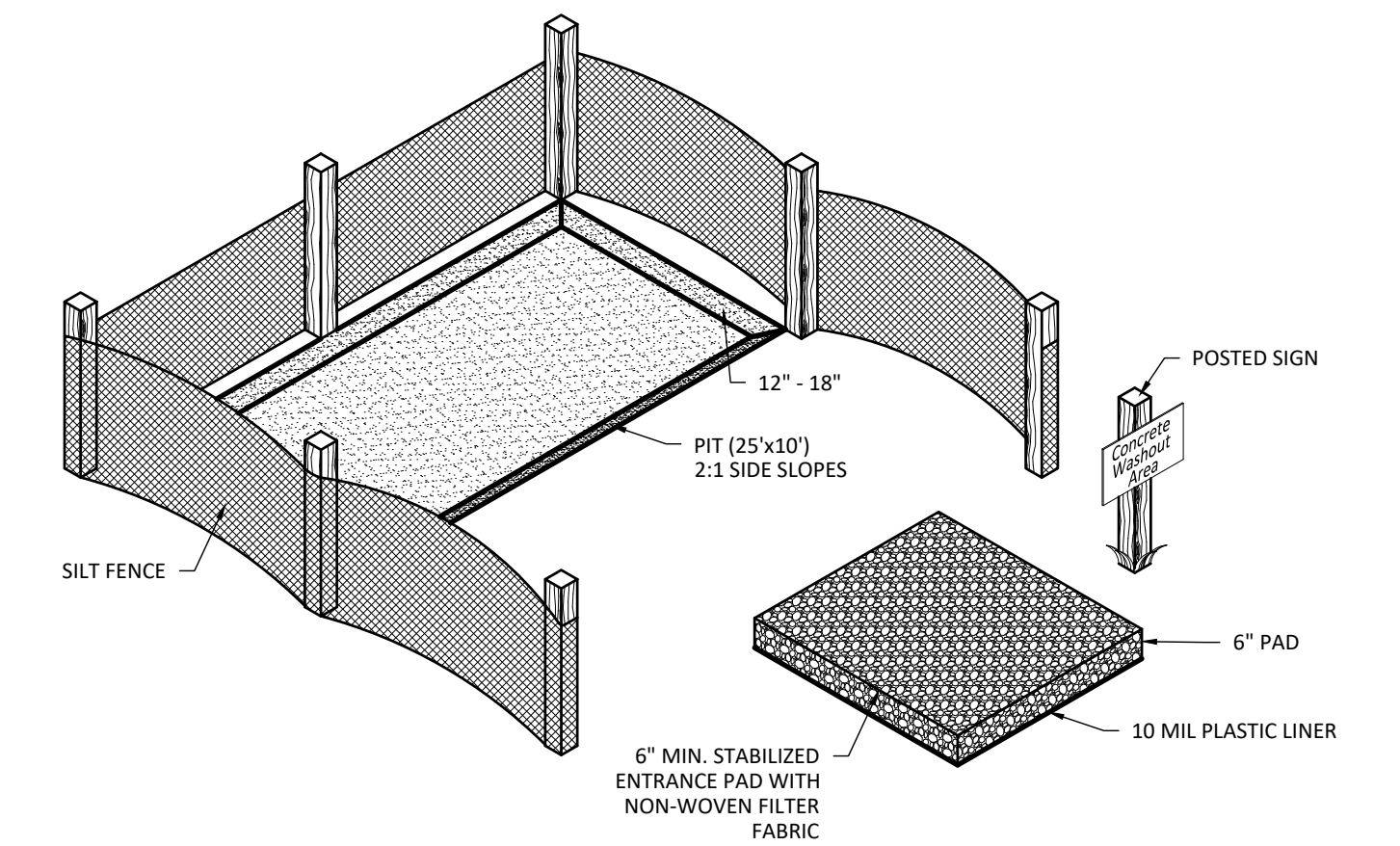
SF SILT FENCE
SCALE: N.T.S.

NOTES:

1. FILTER FABRIC TO BE INSTALLED BENEATH STONE RIP-RAP.
2. WHEN PIPE EMPTIES INTO A DITCH OR SWALE, THE RIP-RAP WILL TAKE THE SHAPE OF THE DITCH OR SWALE, SEE PLAN VIEW FOR LIMITS.



OP RIP-RAP PIPE OUTLET
SCALE: N.T.S.

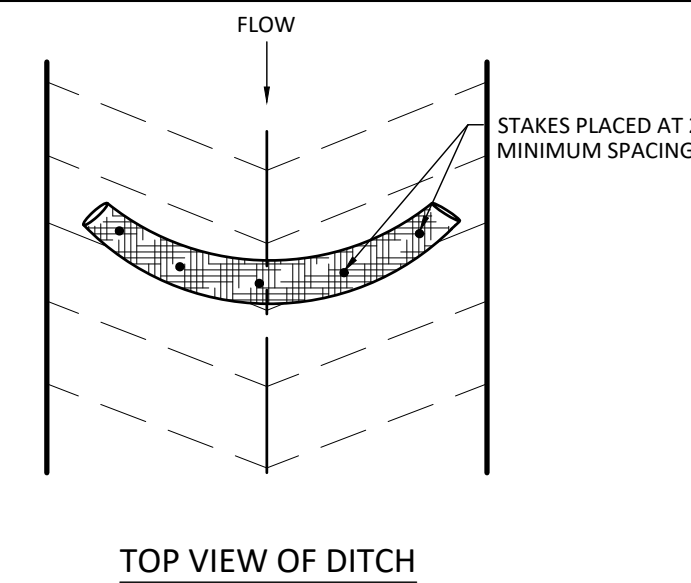


NOTE:

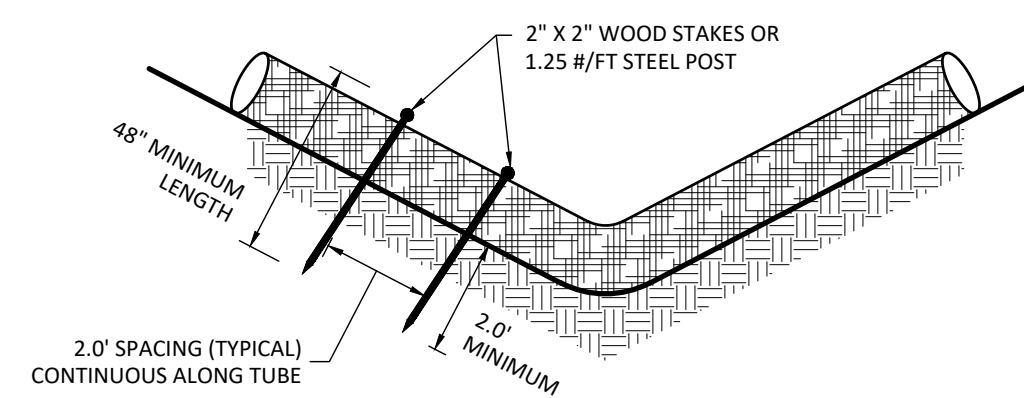
CONTRACTOR TO MAINTAIN THROUGH OUT CONSTRUCTION BY REMOVING CONCRETE & LEGALLY DISPOSING OF WHEN PIT IS FULL.
CONTRACTOR TO MAINTAIN PROPER CONSTRUCTION OF WASH-OUT FACILITY FOR THE DURATION OF THE PROJECT.
CONTRACTOR MAY RELOCATE ON SITE IF NEEDED.

CWA CONCRETE WASHOUT AREA
SCALE: N.T.S.

SEDIMENT TUBE SPACING	
SLOPE	MAXIMUM SEDIMENT TUB SPACING
LESS THAN 2%	150- FEET
2%	100- FEET
3%	75- FEET
4%	50- FEET
5%	40- FEET
6%	30- FEET
GREATER THAN 6%	25- FEET

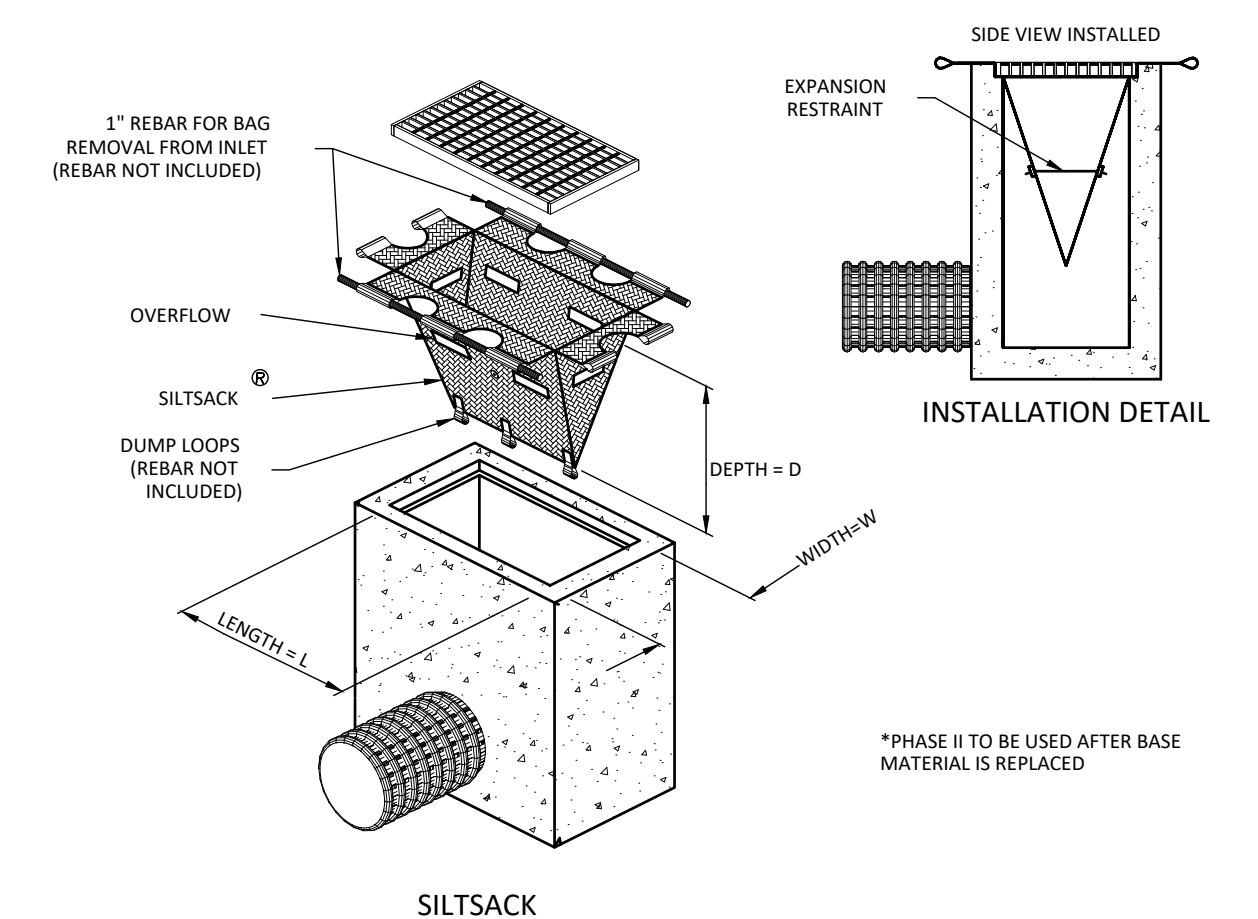


TOP VIEW OF DITCH



END VIEW OF DITCH

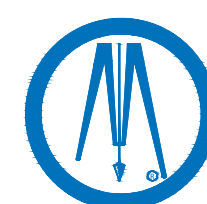
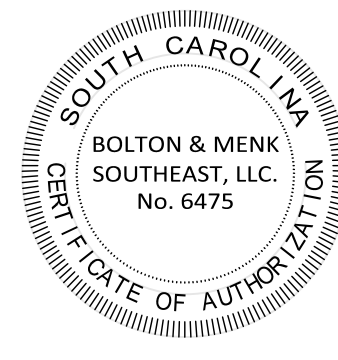
ST SEDIMENT TUBE
SCALE: N.T.S.



PHASE 2 INLET PROTECTION
SCALE: N.T.S.

© Bolton & Menk, Inc. 2021. All Rights Reserved. H:\DDC\PROJECTS\2021\202108\CAD\CAD\21130 - Mt Bike Path Parking\21130-DET.dwg 1/23/2023 11:50:46 AM

NOT TO SCALE



DDC Engineers
A BOLTON & MENK, INC. COMPANY
www.ddcinc.com

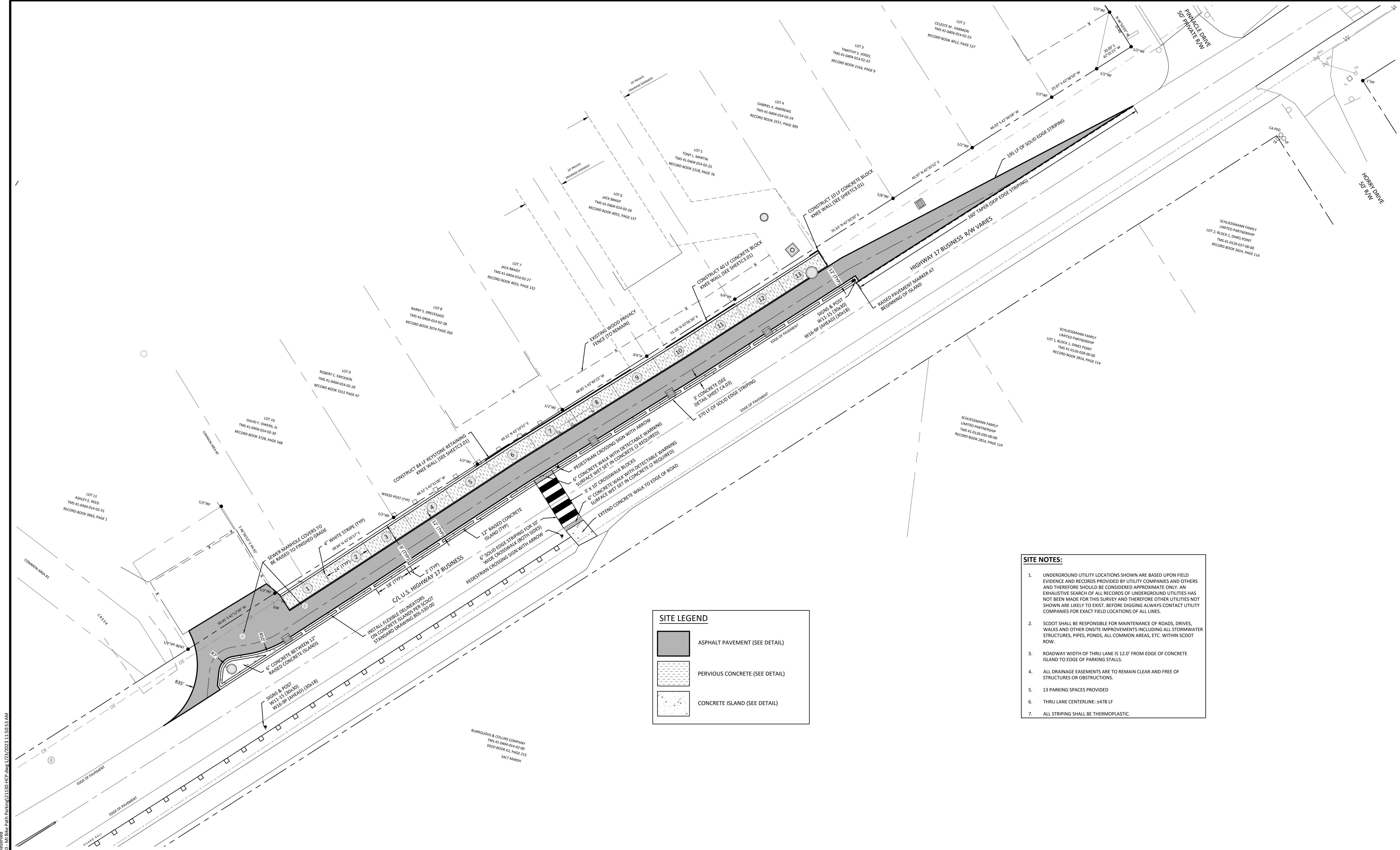
1298 PROFESSIONAL DRIVE
MYRTLE BEACH, SOUTH CAROLINA 29577
Phone: (843) 692-3200
Email: MyrtleBeach@bolton-menk.com
www.bolton-menk.com

DATE	SCALE	DESIGNED	DRAWN	CHECKED	CLIENT PROJ. NO.	NO.	DATE	REVISION DESCRIPTION	BY
11/19/21	NTS	TED	ALL	JTW	21130	1	12/8/2021	REVISED PER COUNTY / SCDOT COMMENTS RECEIVED	TED

GEORGETOWN COUNTY
MURRELLS INLET BIKE PATH PARKING LOT
GEORGETOWN COUNTY, SOUTH CAROLINA
SEDIMENT AND EROSION CONTROL
DETAILS

SHEET

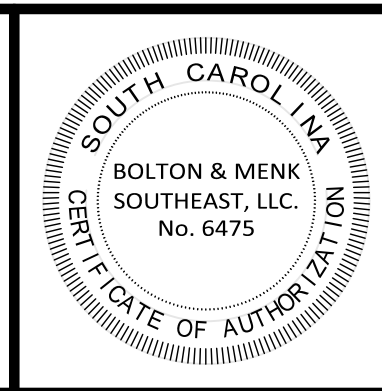
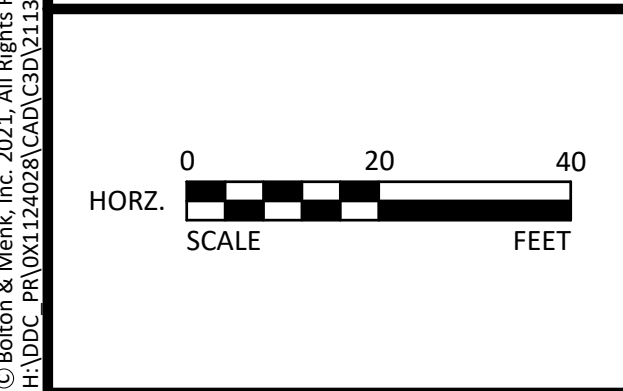
C2.03



SITE LEGEND

- ASPHALT PAVEMENT (SEE DETAIL)
- PERVIOUS CONCRETE (SEE DETAIL)
- CONCRETE ISLAND (SEE DETAIL)

- SITE NOTES:**
- UNDERGROUND UTILITY LOCATIONS SHOWN ARE BASED UPON FIELD EVIDENCE AND RECORDS PROVIDED BY UTILITY COMPANIES AND OTHERS AND THEREFORE SHOULD BE CONSIDERED APPROXIMATE ONLY. AN EXHAUSTIVE SEARCH OF ALL RECORDS OF UNDERGROUND UTILITIES HAS NOT BEEN MADE FOR THIS SURVEY AND THEREFORE OTHER UTILITIES NOT SHOWN ARE LIKELY TO EXIST. BEFORE DIGGING ALWAYS CONTACT UTILITY COMPANIES FOR EXACT FIELD LOCATIONS OF ALL LINES.
 - SCDOT SHALL BE RESPONSIBLE FOR MAINTENANCE OF ROADS, DRIVES, WALKS AND OTHER ONSITE IMPROVEMENTS INCLUDING ALL STORMWATER STRUCTURES, PIPES, PONDS, ALL COMMON AREAS, ETC. WITHIN SCDOT ROW.
 - ROADWAY WIDTH OF THRU LANE IS 12.0' FROM EDGE OF CONCRETE ISLAND TO EDGE OF PARKING STALLS.
 - ALL DRAINAGE EASEMENTS ARE TO REMAIN CLEAR AND FREE OF STRUCTURES OR OBSTRUCTIONS.
 - 13 PARKING SPACES PROVIDED
 - THRU LANE CENTERLINE: ±478 LF
 - ALL STRIPING SHALL BE THERMOPLASTIC.



DDC Engineers
A BOLTON & MENK, INC. COMPANY
www.ddcinc.com

1298 PROFESSIONAL DRIVE
MYRTLE BEACH, SOUTH CAROLINA 29577
Phone: (843) 692-3200
Email: MyrtleBeach@bolton-menk.com
www.bolton-menk.com

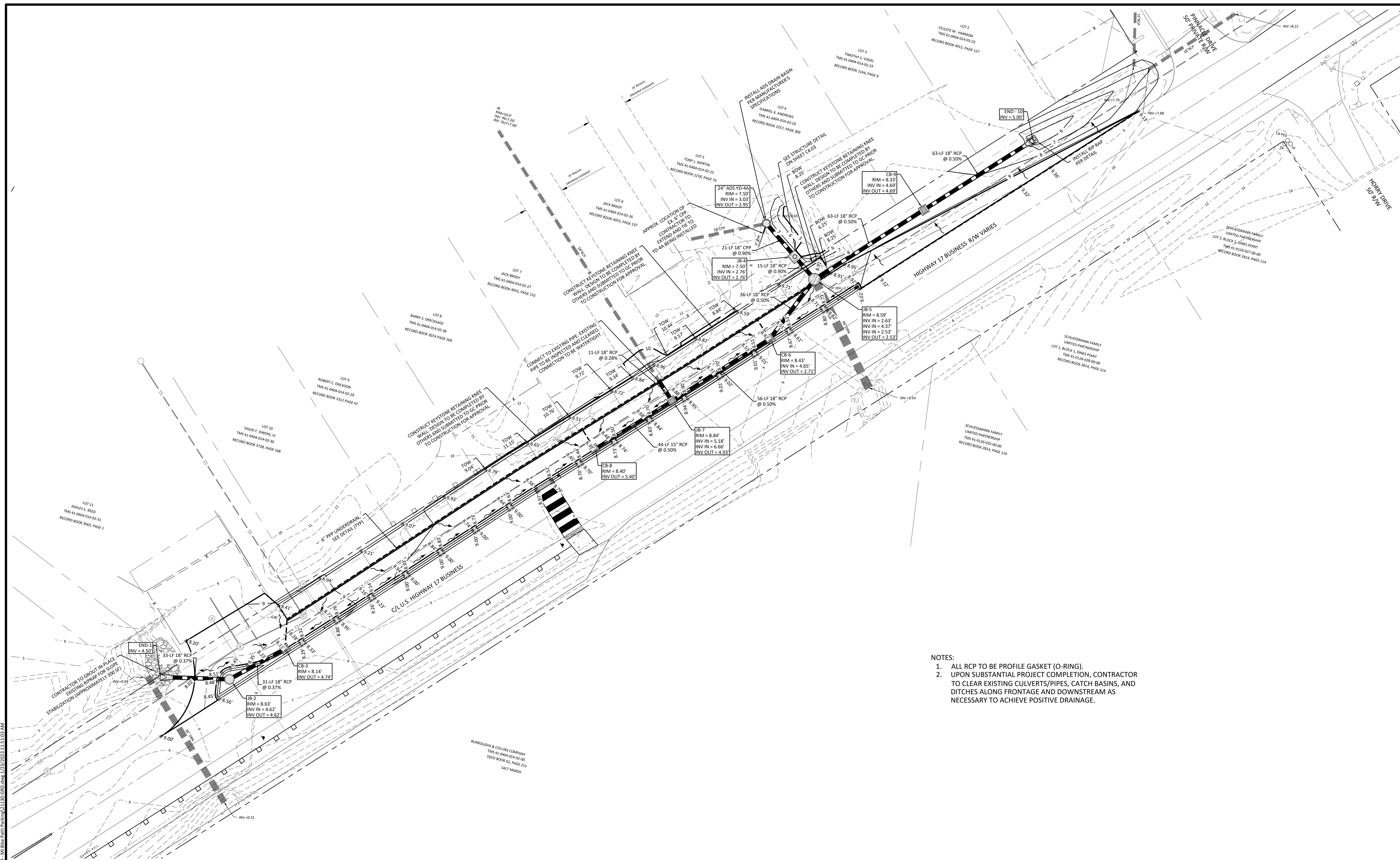
DATE	NO.	DATE	REVISION DESCRIPTION	BY
11/19/21				
SCALE				
DESIGNED	TED			
DRAWN	ALL			
CHECKED	JTW	12/19/2022	REVISED DRAINAGE ON LOT 5	TED
CLIENT PROJ. NO.	21130	12/8/2021	REVISED PER COUNTY / SCDOT COMMENTS RECEIVED	TED

GEORGETOWN COUNTY
MURRELLS INLET BIKE PATH PARKING LOT
GEORGETOWN COUNTY, SOUTH CAROLINA

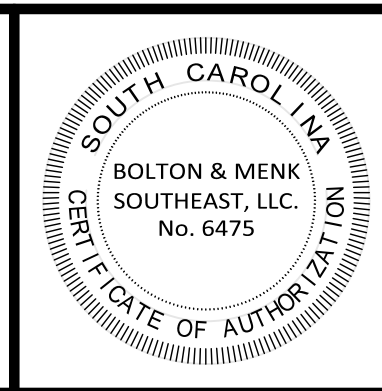
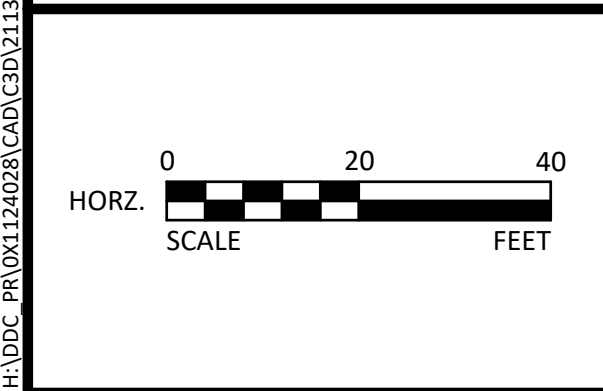
HORIZONTAL CONTROL PLAN

SHEET C3.01

© Bolton & Menk, Inc. 2021. All Rights Reserved. H:\DDC\PROJ\21028\CAD\CAD\21130 - Murrells Inlet Bike Path Parking\21130-HCP.dwg, 1/23/2023 11:50:53 AM



- NOTES:
1. ALL RCP TO BE PROFILE GASKET (O-RING).
 2. UPON SUBSTANTIAL PROJECT COMPLETION, CONTRACTOR TO CLEAR EXISTING CULVERTS/PIPES, CATCH BASINS, AND DITCHES ALONG FRONTAGE AND DOWNSTREAM AS NECESSARY TO ACHIEVE POSITIVE DRAINAGE.



DDC Engineers
 A BOLTON & MENK, INC. COMPANY
 www.ddcinc.com

1298 PROFESSIONAL DRIVE
 MYRTLE BEACH, SOUTH CAROLINA 29577
 Phone: (843) 692-3200
 Email: MyrtleBeach@bolton-menk.com
 www.bolton-menk.com

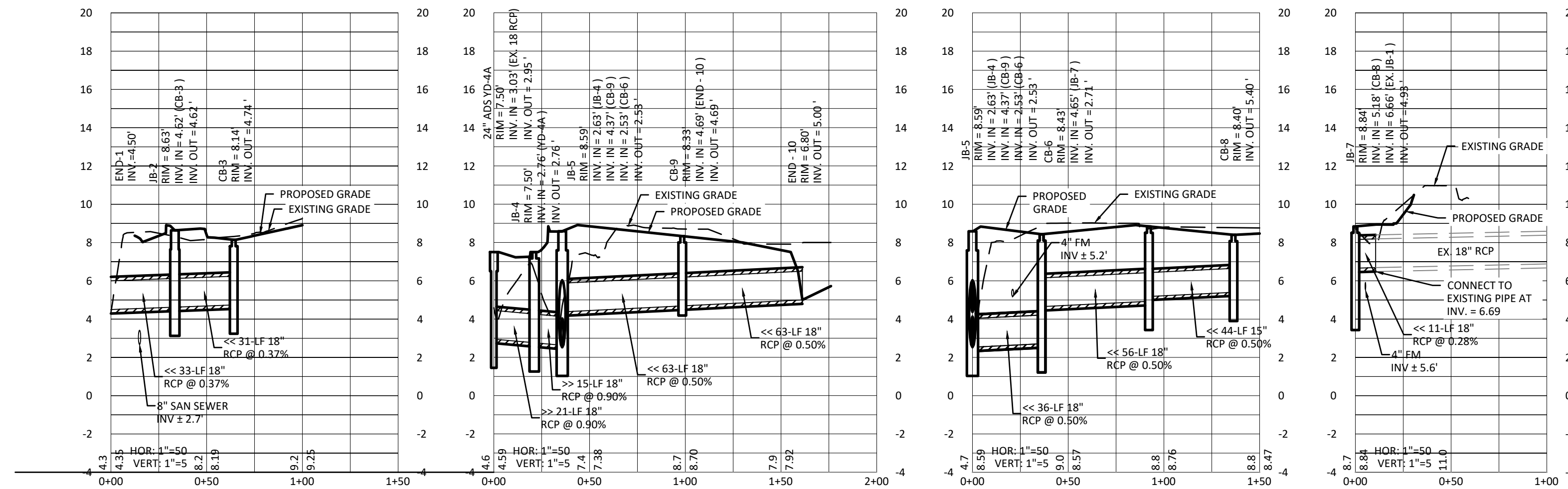
DATE	NO.	DATE	REVISION DESCRIPTION	BY
11/19/21				
SCALE				
DESIGNED				
DRAWN				
CHECKED				
CLIENT PROJ. NO.				

GEORGETOWN COUNTY
 MURRELLS INLET BIKE PATH PARKING LOT
 GEORGETOWN COUNTY, SOUTH CAROLINA

GRADING AND DRAINAGE PLAN

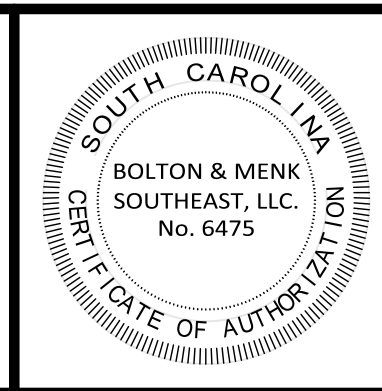
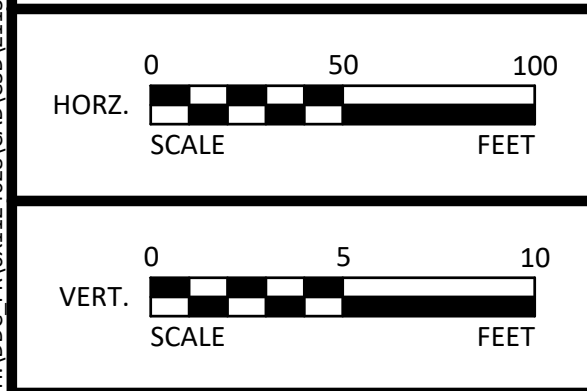
SHEET C4.01

© Bolton & Menk, Inc. 2021. All Rights Reserved. H:\DDC\PROJECTS\24028\CAD\CAD\C4.01.dwg, 1/23/2023 11:51:03 AM



DRAINAGE PROFILES
 SCALE: HORZ: 1" = 50'
 VERT: 1" = 5'

© Bolton & Menk, Inc. 2021. All Rights Reserved. H:\DDC\PROJECTS\24028\CAD\CAD\DWG\21130 - MI Bike Path Parking\21130-PROF-50.dwg, 1/21/2023 11:51:12 AM



DDC Engineers
 A BOLTON & MENK, INC. COMPANY
 www.ddcinc.com

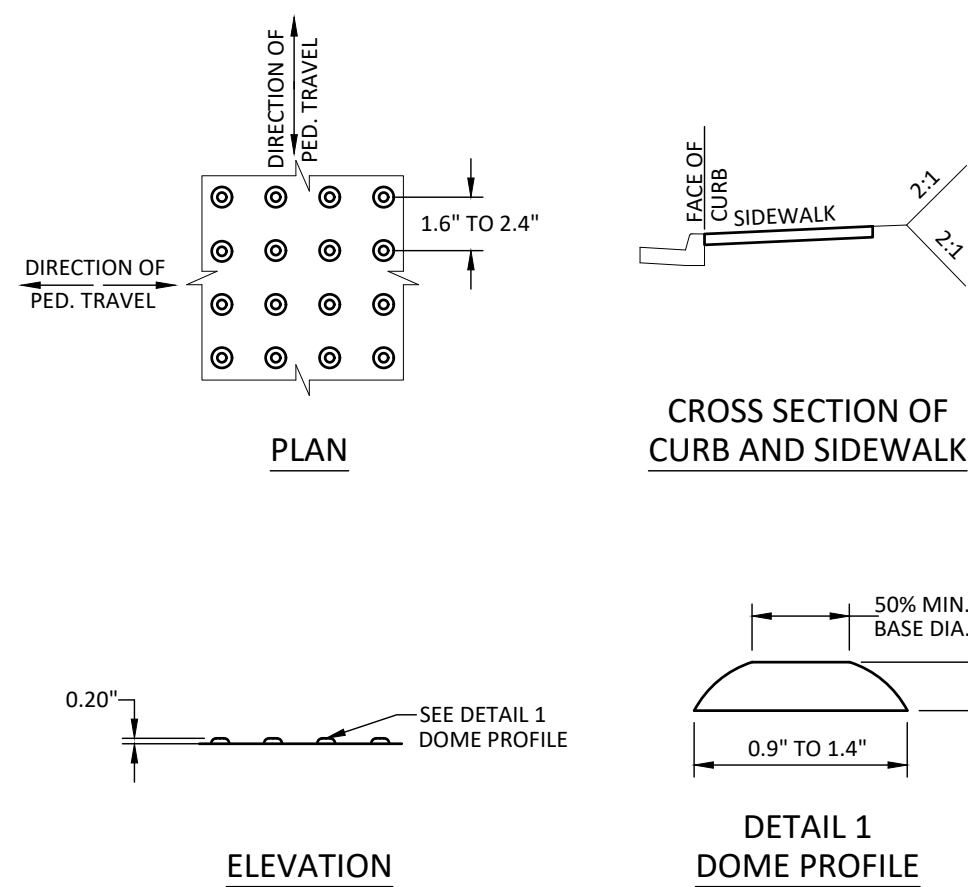
1298 PROFESSIONAL DRIVE
 MYRTLE BEACH, SOUTH CAROLINA 29577
 Phone: (843) 692-3200
 Email: MyrtleBeach@bolton-menk.com
 www.bolton-menk.com

DATE	NO.	DATE	REVISION DESCRIPTION	BY	
11/19/21					
DESIGNED	TED				
DRAWN	ALL	3	1/23/2023	REVISED PER GCPW COMMENTS	TED
CHECKED	JTW	2	12/19/2022	REVISED DRAINAGE ON LOT 5	TED
		1	12/8/2021	REVISED PER COUNTY / SCDOT COMMENTS RECEIVED	TED
CLIENT PROJ. NO.	21130				

GEORGETOWN COUNTY
 MURRELLS INLET BIKE PATH PARKING LOT
 GEORGETOWN COUNTY, SOUTH CAROLINA

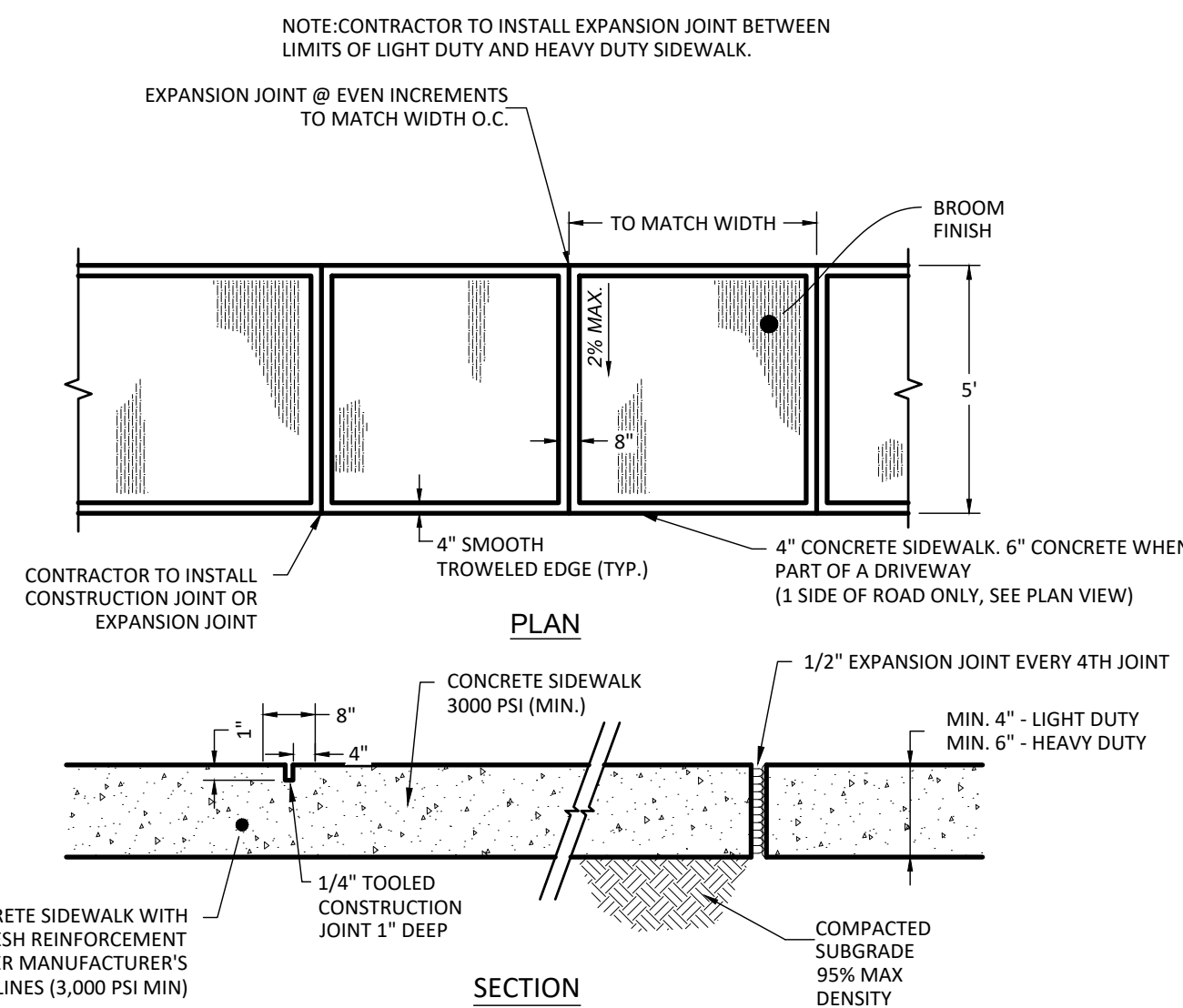
DRAINAGE PROFILES

SHEET
C4.02

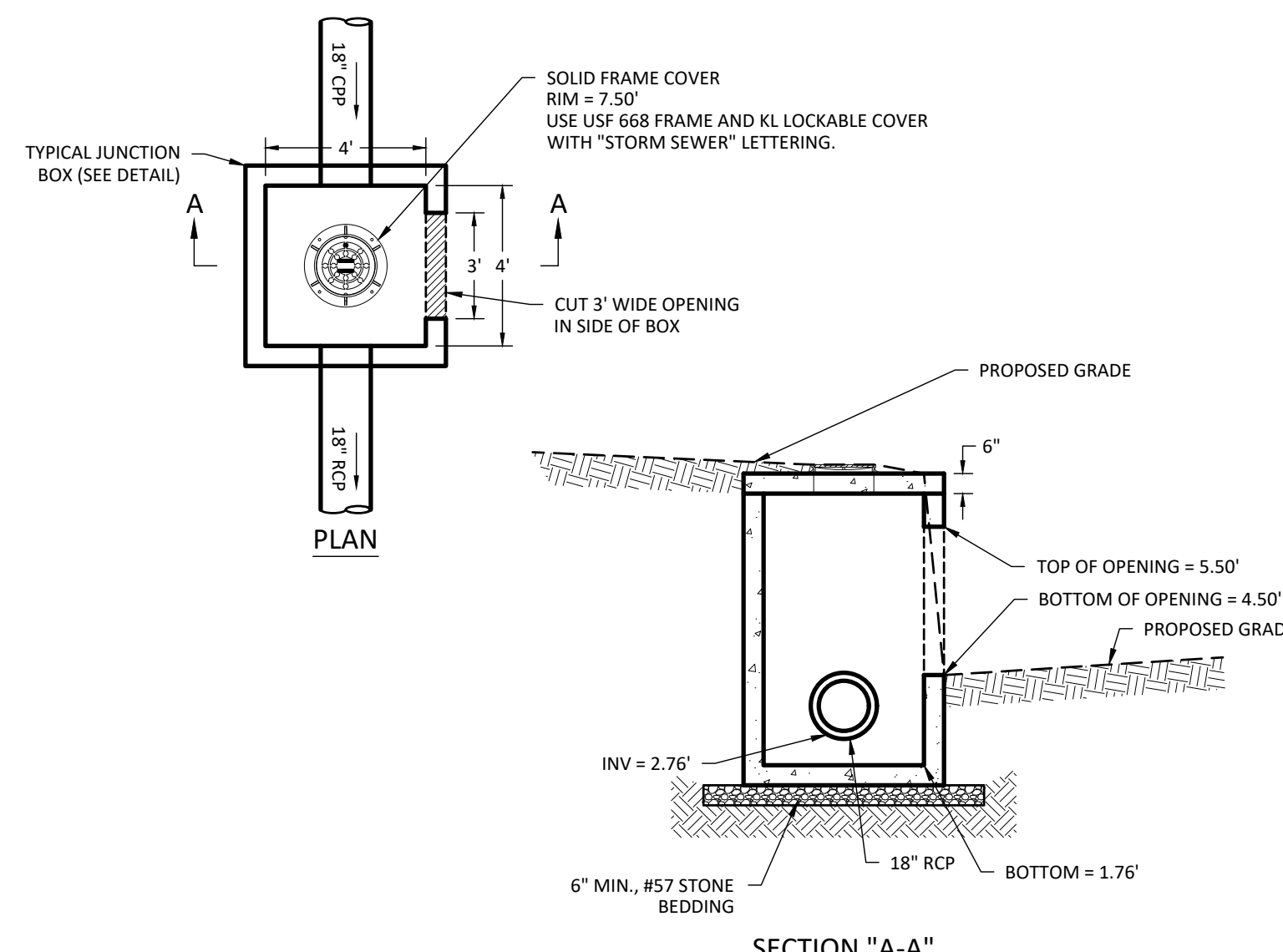


NOTE: ALL TACTILE WARNING SURFACES TO BE WET SET IN CONCRETE.

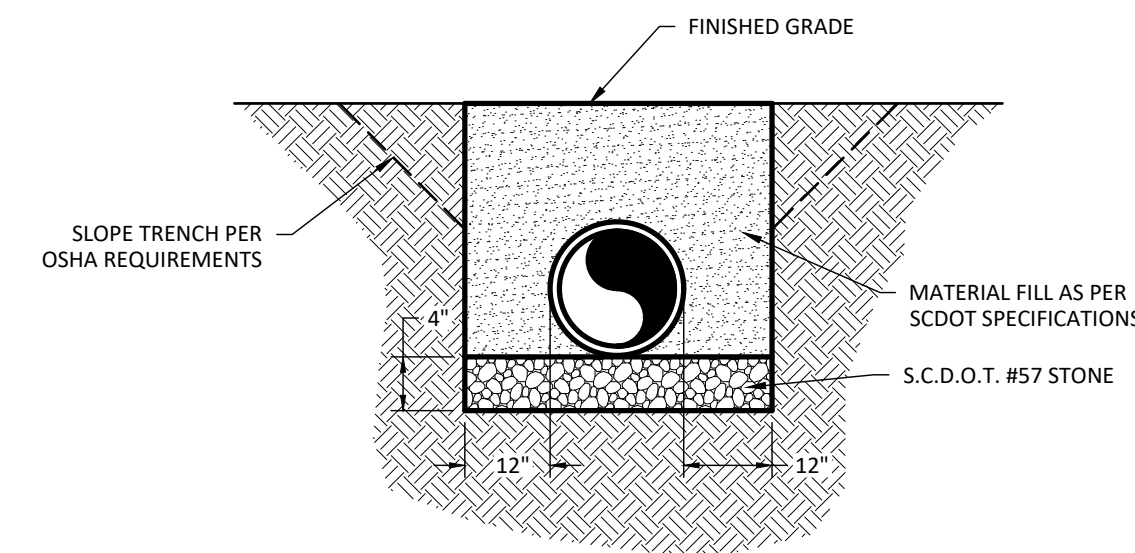
TACTILE WARNING SURFACE TREATMENT DETAIL
SCALE: N.T.S.



SIDEWALK DETAIL
SCALE: N.T.S.



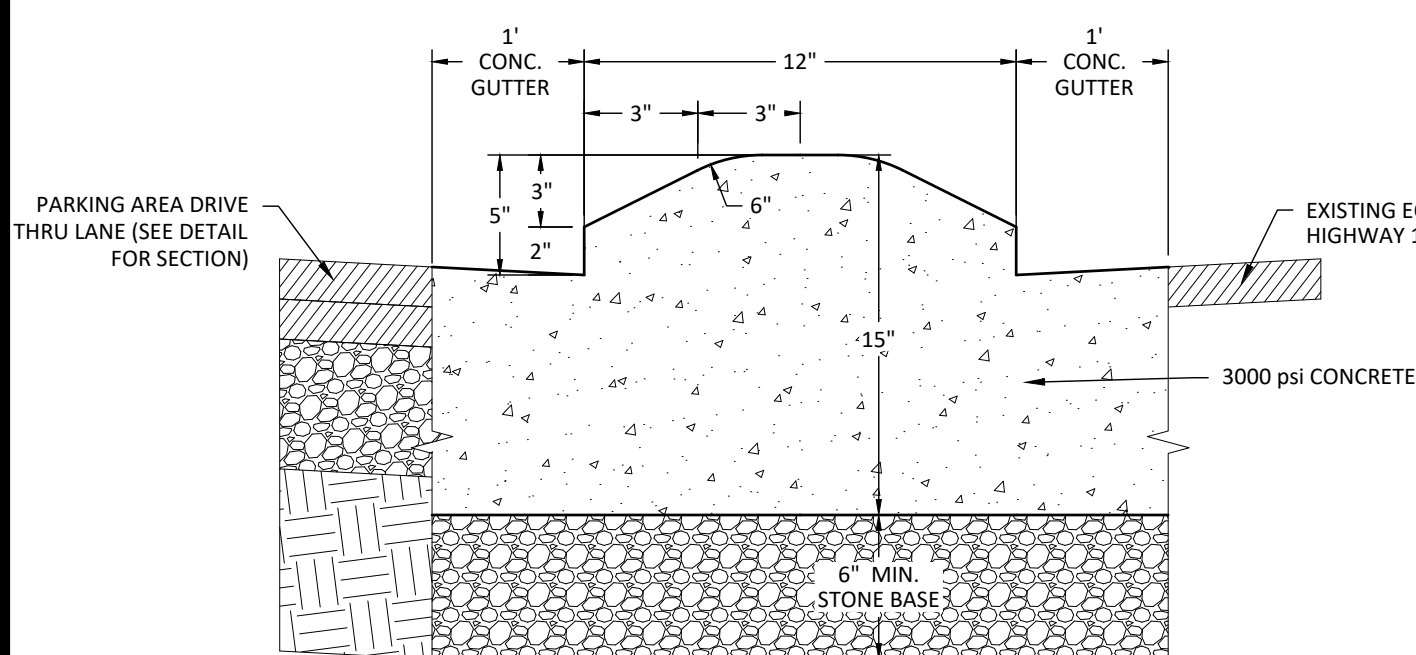
JB-4 STRUCTURE DETAIL
SCALE: N.T.S.



NOTES:

- CONTRACTOR MUST INSTALL ALL RCP STORM DRAINAGE PIPING PER DETAIL. THIS INCLUDES ALL DRAINAGE OUTSIDE OF THE ROAD RIGHTS-OF-WAY.
- FILL SHALL BE CLASS I OR II MATERIAL FREE OF LARGE ROCKS, DEBRIS OR ORGANICS PLACED IN 6" LIFTS AND COMPACTED TO 95% OF THE SOIL'S MODIFIED PROCTOR DENSITY.

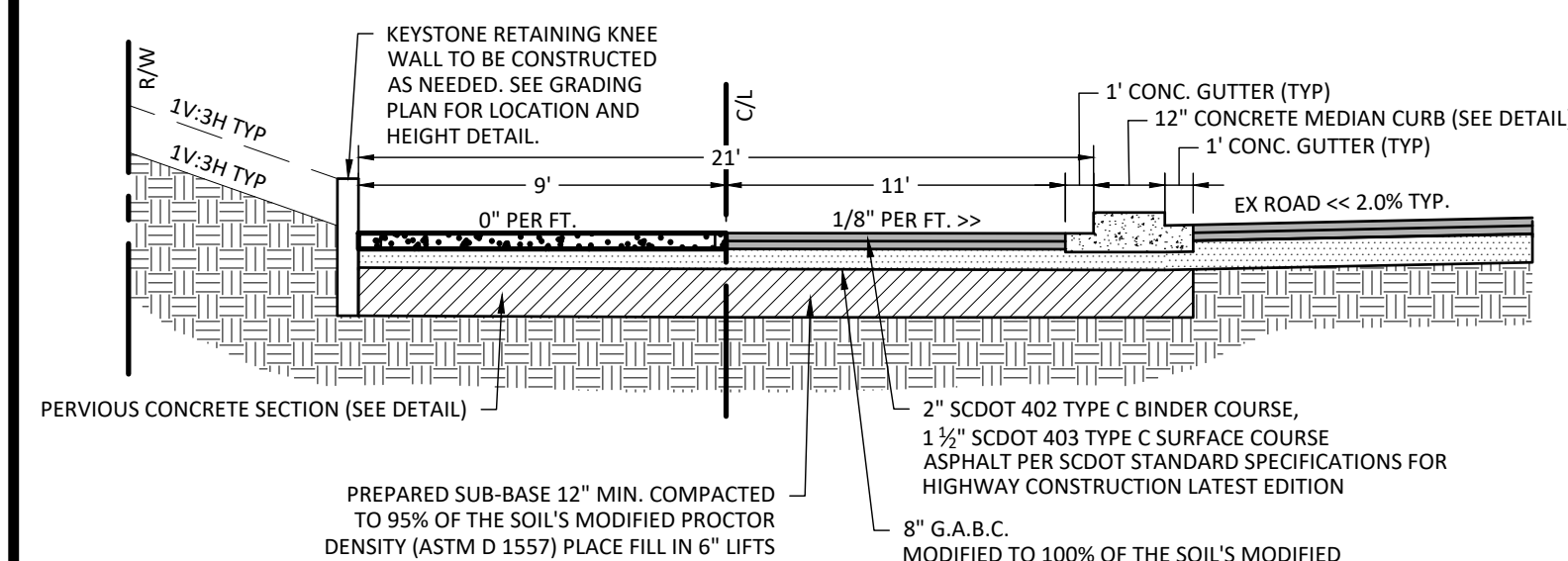
REINFORCED CONCRETE PIPE BEDDING
SCALE: N.T.S.



NOTE:

- CURB MUST MEET SCDOT SPECIFICATIONS FOR STRENGTH 3000 PSI @ 28 DAYS.
- PROOF ROLL SUBGRADE AND BASE PRIOR TO LAYING CURB AND GUTTER.
- MEDIANS TO BE 18" LONG WITH 2" GAPS IN BETWEEN TO ALLOW FOR DRAINAGE.
- INSTALL FLEXIBLE DELINEATORS IN MEDIANS PER SCDOT STANDARD DRAWING 805-530-00.

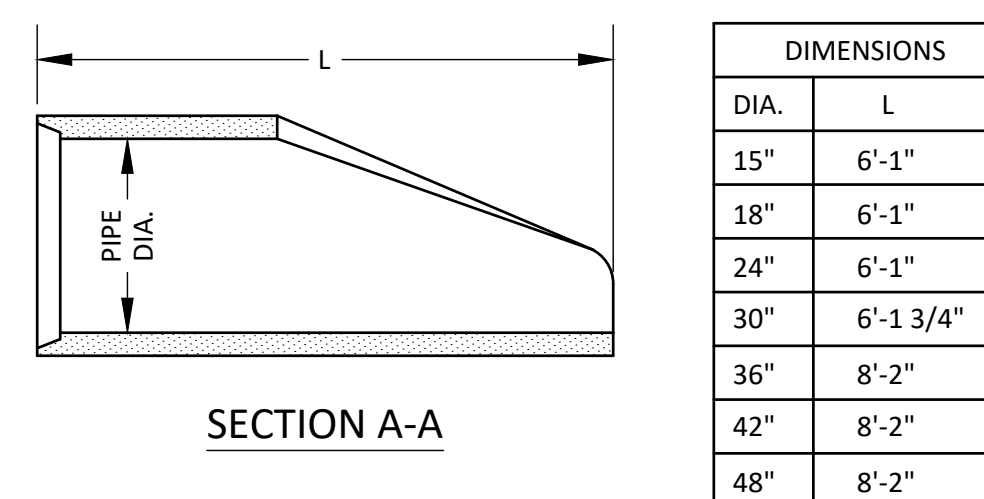
12" CONCRETE MEDIAN CURB
SCALE: N.T.S.



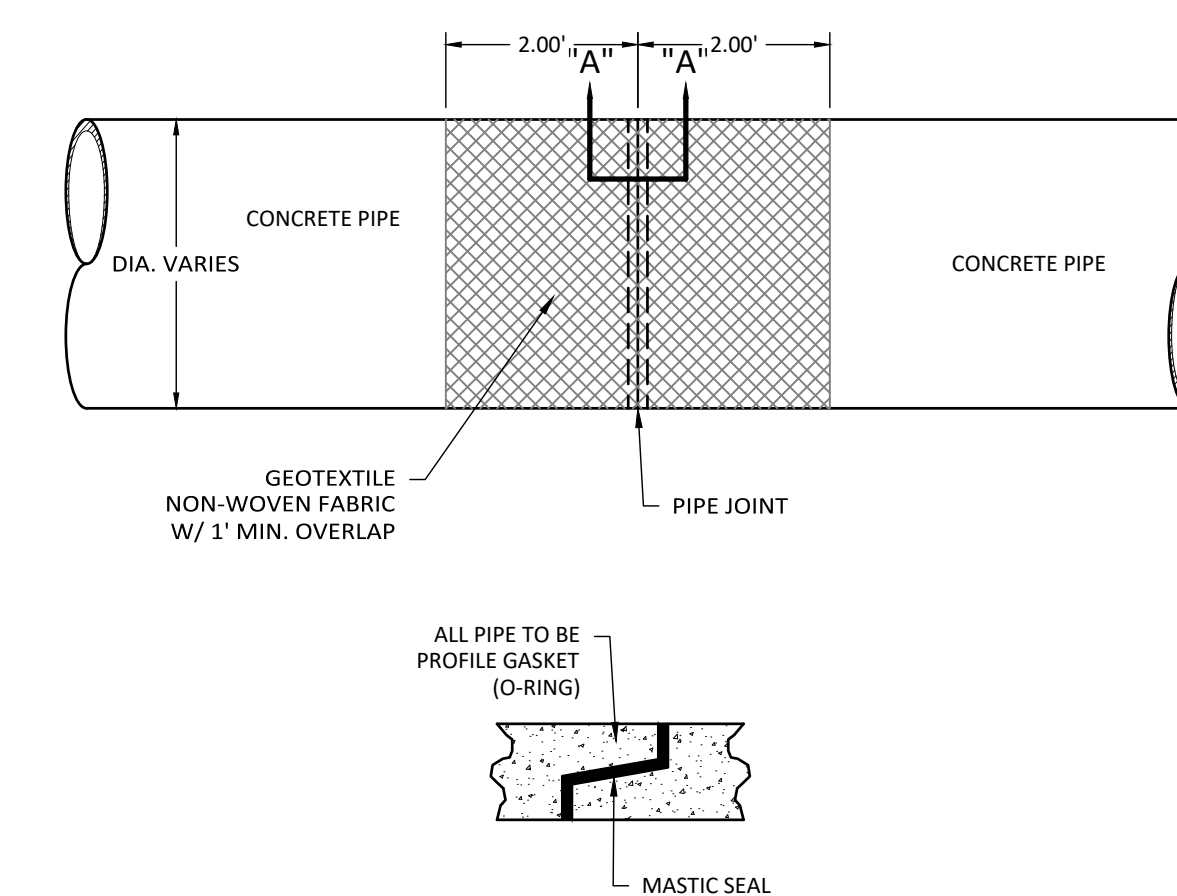
NOTES:

- ALL ROADWAY CONSTRUCTION MATERIALS MUST MEET SCDOT SPECIFICATIONS.
- CONTACT SURFACES OF CURBING, GUTTERS, EDGES OF EXISTING PAVEMENT, MANHOLES, CATCH BASINS, ETC., SHALL BE PAINTED WITH A THIN, UNIFORM COATING OF ASPHALT MATERIAL JUST BEFORE THE ASPHALT MIXTURE IS PLACED.
- CORES, DENSITY, AND GRADATION WILL BE REQUIRED OF THE ASPHALT PRIOR TO CLOSEOUT. ALL TEST RESULTS MUST CONTAIN, BUT NOT LIMITED TO THE FOLLOWING:
 - (SOIL COMPACTION) - WITH PROCTOR AND SIEVE GRAIN SIZE ANALYSIS
 - (STONE BASE DENSITY) - WITH PROCTOR AND STONE GRADATION
 - (ASPHALT BINDER) - WITH OVEN WORKSHEET, ASPHALT CEMENT CONTENT AND GRADATION. FIELD CORE INFORMATION FOR DEPTH.
 - (ASPHALT SURFACE) - WITH OVEN WORKSHEET, ASPHALT CEMENT CONTENT AND GRADATION. FIELD CORE INFORMATION FOR DEPTH AND NUCLEAR OR CORE COMPACTION
 - (CONCRETE TESTING) - WITH SLUMP, TEMPERATURE, AIR AND COMPRESSIVE STRENGTH
- IF ANY UNSUITABLE AREAS ARE ENCOUNTERED, CONTRACTOR CONTACT "GEOMETRICS CONSULTING" (843-438-8253) FOR PROPER EVALUATION AND PROPER RECOMMENDATION TO BE REPLACED WITH GOOD GRANULAR SELECT FILL.
- CONTRACTOR TO COORDINATE AND ENSURE THAT ALL TESTING AS DESCRIBED IN THE GEOTECHNICAL REPORT, BE PERFORMED AND FORWARD ALL RESULTS TO THE ENGINEER OF RECORD PRIOR TO PROOF ROLL BEING SCHEDULED WITH HENRY COUNTY.
- PROOF-ROLLING SHALL BE PERFORMED WITH A LOADED TANDEM AXLE DUMP TRUCK. WEIGHT TICKET SHOWING THE CURRENT LOAD COMING FROM A SC CERTIFIED SCALE MASTER MUST BE PROVIDED AT BEGINNING OF PROOF ROLL INSPECTION. WEIGHT TICKET CANNOT HAVE BEEN ISSUED MORE THAN ONE HOUR PRIOR TO BEGINNING PROOF ROLL INSPECTION. GROSS VEHICLE WEIGHT SHALL BE NO LESS THAN 65,000 LBS. IN LIEU OF THIS REQUIREMENT CONTRACTOR MAY PROVIDE TANDEM DUMP TRUCK LOADED WITH GABC WITH ZERO FREEBOARD. LOAD MUST BE DUMPED ON SITE AT THE END OF THE PROOF ROLL FOR INSPECTION BY THE COUNTY INSPECTOR. ANY MATERIAL FOUND OTHER THAN GABC WILL RESULT IN AN INSPECTION FAILURE.

TYPICAL SECTION - ASPHALT PAVEMENT
SCALE: N.T.S.



FLARED END SECTION
SCALE: N.T.S.

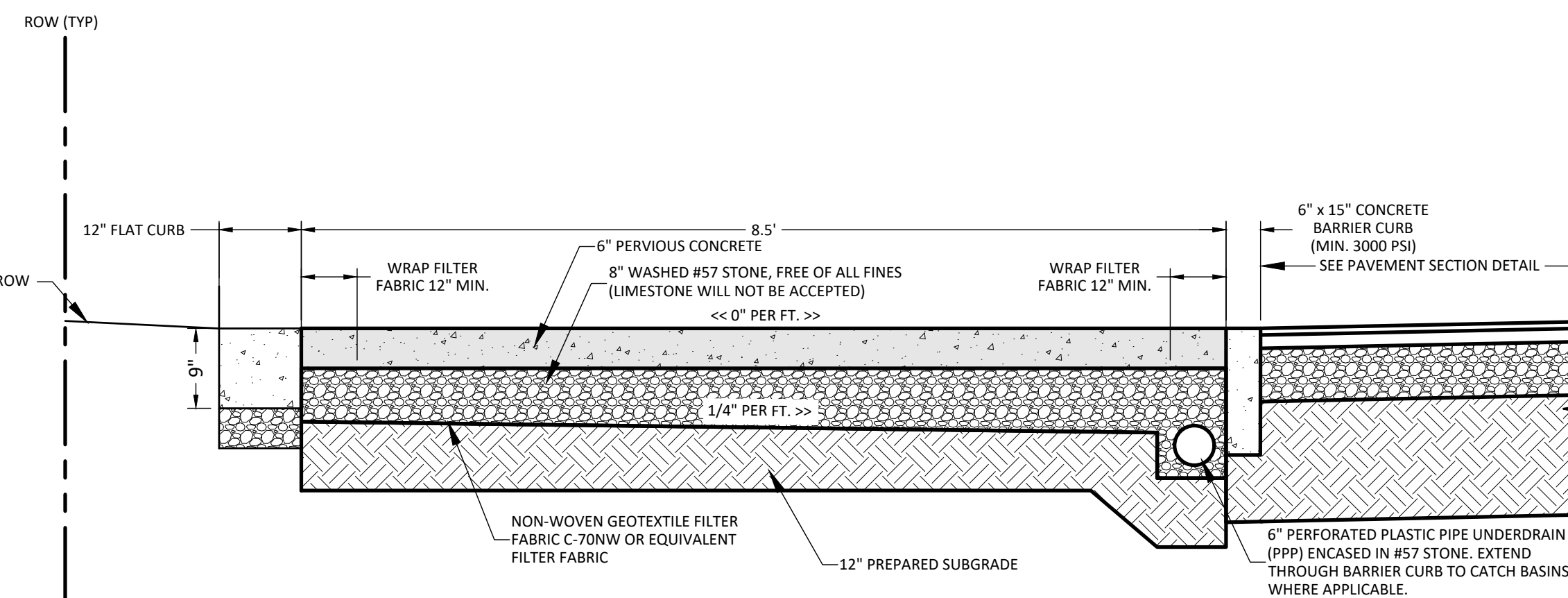


SECTION "A-A"

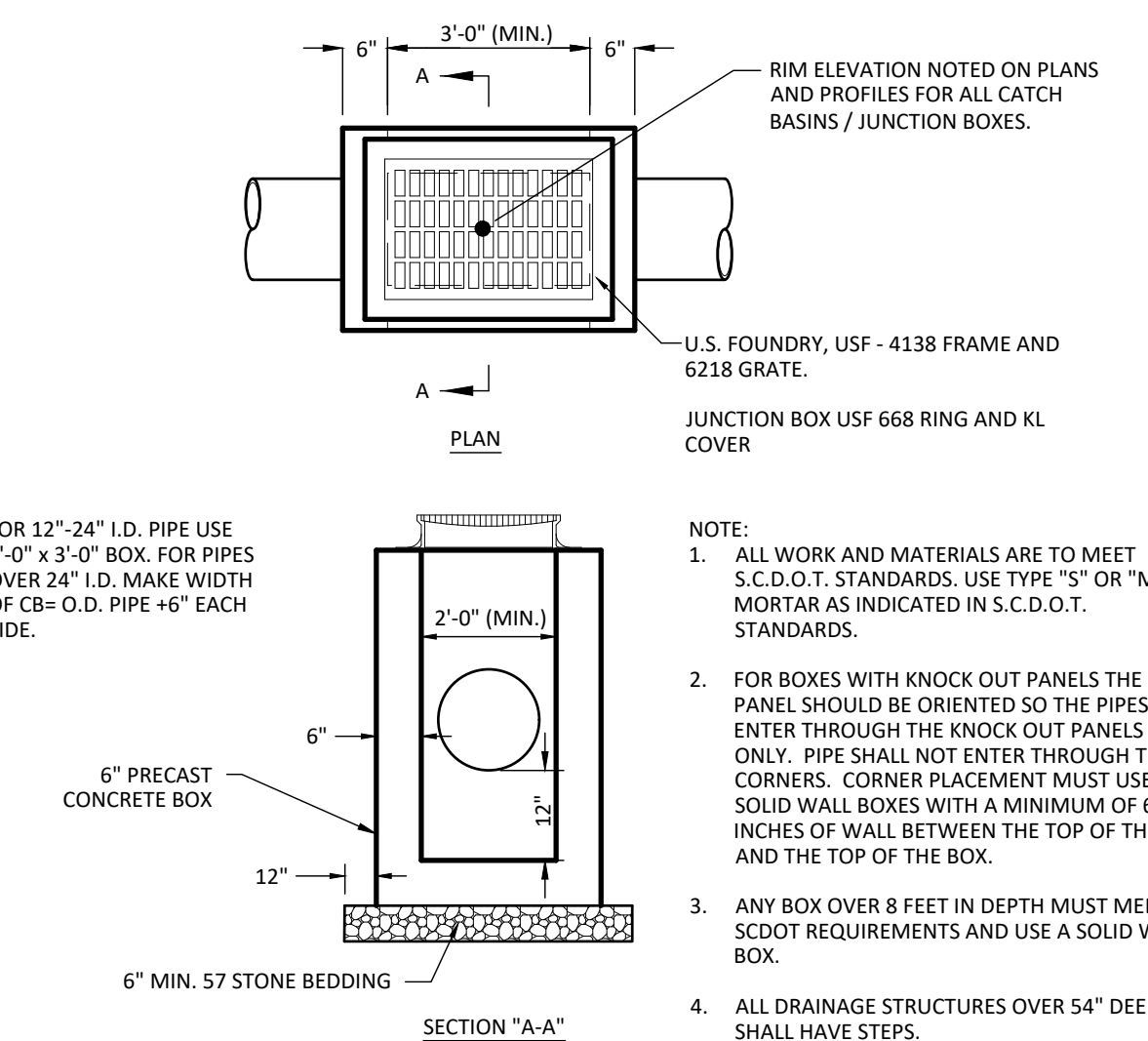
PIPE JOINT
SCALE: N.T.S.

REFER TO THE FOLLOWING SCDOT STANDARD DRAWINGS FOR FURTHER SITE AND DRAINAGE DETAILS.

- 602-005
- 610-005
- 714-005
- 719-105
- 719-110
- 720-901
- 720-910
- 802-205



PERVIOUS CONCRETE SECTION
SCALE: N.T.S.

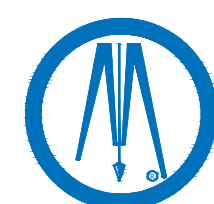
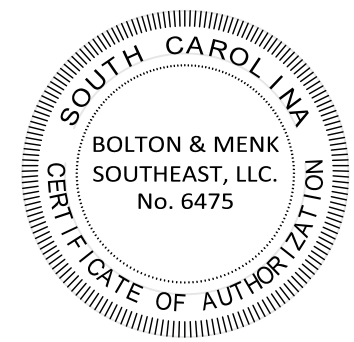


FOR 12"-24" I.D. PIPE USE 2'-0" x 3'-0" BOX FOR PIPES OVER 24" I.D. MAKE WIDTH OF CB= O.D. PIPE +6" EACH SIDE.

- NOTE:
- ALL WORK AND MATERIALS ARE TO MEET S.C.D.O.T. STANDARDS. USE TYPE "S" OR "M" MORTAR AS INDICATED IN S.C.D.O.T. STANDARDS.
 - FOR BOXES WITH KNOCK OUT PANELS THE PANEL SHOULD BE ORIENTED SO THE PIPES ENTER THROUGH THE KNOCK OUT PANELS AREA ONLY. PIPE SHALL NOT ENTER THROUGH THE CORNERS. CORNER PLACEMENT MUST USE SOLID WALL BOXES WITH A MINIMUM OF 6" INCHES OF WALL BETWEEN THE TOP OF THE PIPE AND THE TOP OF THE BOX.
 - ANY BOX OVER 8 FEET IN DEPTH MUST MEET SCDOT REQUIREMENTS AND USE A SOLID WALL BOX.
 - ALL DRAINAGE STRUCTURES OVER 54" DEEP SHALL HAVE STEPS.

TYPICAL CATCH BASIN / JUNCTION BOX
SCALE: N.T.S.

NOT TO SCALE



DDC Engineers
A BOLTON & MENK, INC. COMPANY
www.ddcinc.com

1298 PROFESSIONAL DRIVE
MYRTLE BEACH, SOUTH CAROLINA 29577
Phone: (843) 692-3200
Email: MyrtleBeach@bolton-menk.com
www.bolton-menk.com

DATE	SCALE	DESIGNED	DRAWN	CHECKED	CLIENT PROJ. NO.	NO.	DATE	REVISION DESCRIPTION	BY
11/19/21	NTS	TED	ALL	JTW	21130	2	12/19/2022	REVISED DRAINAGE ON LOT 5	TED
						1	12/8/2021	REVISED PER COUNTY / SCDOT COMMENTS RECEIVED	TED

GEORGETOWN COUNTY
MURRELLS INLET BIKE PATH PARKING LOT
GEORGETOWN COUNTY, SOUTH CAROLINA

SITE DETAILS

SHEET

C4.03

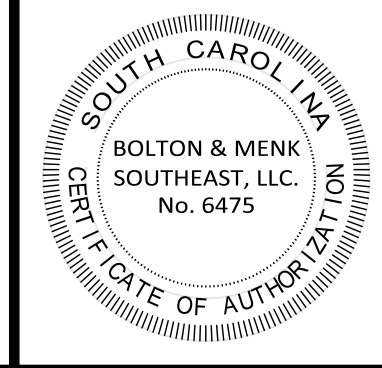
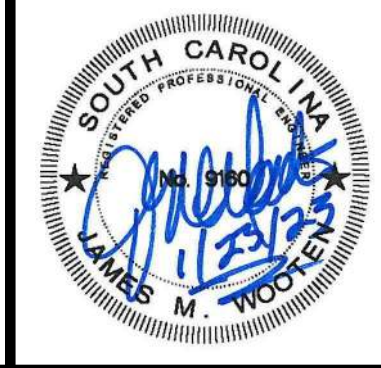
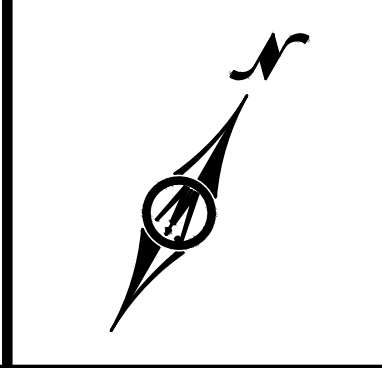
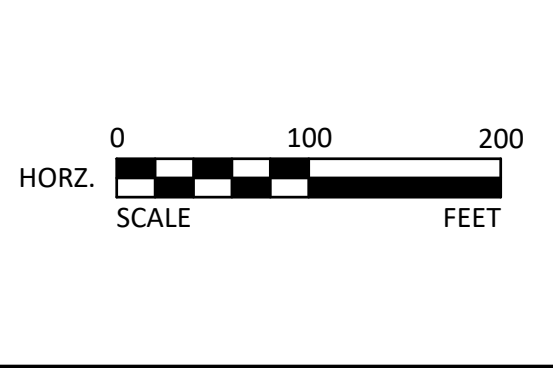
TRAFFIC CONTROL NOTES:

1. FOR FURTHER DETAIL, REFER TO SCDOT STANDARD DRAWING 610-005-30 FOR FLAGGING AND CLOSURE SIGNAGE AND OPERATIONS INCLUDING SIGN PLACEMENT INTERVALS, BUFFER AND TAPER LENGTHS.
2. THE CONTRACTOR SHALL FURNISH, INSTALL AND MAINTAIN THE DEVICES IN THIS TRAFFIC CONTROL PLAN UNLESS OTHERWISE NOTED, FOR THE DURATION OF RELATED CONSTRUCTION ACTIVITIES.
3. FIELD CONDITIONS MAY REQUIRE MODIFICATIONS TO THIS LAYOUT.
4. ALL TRAFFIC CONTROL DEVICES SHALL CONFORM AND BE INSTALLED IN ACCORDANCE WITH THE LATEST EDITION ON THE MANUAL ON UNIFORM TRAFFIC CONTROL DEVICES (MUTCD) AND INCLUDING THE LATEST FIELD MANUAL FOR TEMPORARY TRAFFIC CONTROL ZONE LAYOUTS. TRAFFIC CONTROL NOT IN COMPLIANCE WITH THE MUTCD WILL BE SUBJECT TO VIOLATION.
5. PLACE ADVANCED NOTICE SIGNS 7 DAYS IN ADVANCE OF CLOSURE.
6. TRAFFIC DIVERSION PLAN IS EXPECTED TO BE IN PLACE FOR 48 HOURS. CONTRACTOR SHALL CONTACT AND COORDINATE WITH HORRY COUNTY IF DIVERSION IS NEEDED FOR AN EXTENDED PERIOD OF TIME.



© 2021 Microsoft Corporation © 2021 Maxar ©CNES (2021) Distribution Airbus DS

© Bolton & Menk, Inc. 2021. All Rights Reserved. H:\DDC\PROJECTS\2021\202108\CAD\CAD\1130 - MI Bike Path Parking\1130-1-CP.dwg, 1/23/2023 11:51:27 AM



DDC Engineers
A BOLTON & MENK, INC. COMPANY
www.ddcinc.com

1298 PROFESSIONAL DRIVE
MYRTLE BEACH, SOUTH CAROLINA 29577
Phone: (843) 692-3200
Email: MyrtleBeach@bolton-menk.com
www.bolton-menk.com

DATE	11/19/21				
SCALE	1" = 100'				
DESIGNED	TED				
DRAWN	ALL				
CHECKED	JTW	2	12/19/2022	REVISED DRAINAGE ON LOT 5	TED
		1	12/8/2021	REVISED PER COUNTY / SCDOT COMMENTS RECEIVED	TED
CLIENT PROJ. NO.	21130	NO.	DATE	REVISION DESCRIPTION	BY

GEORGETOWN COUNTY
MURRELLS INLET BIKE PATH PARKING LOT
GEORGETOWN COUNTY, SOUTH CAROLINA
TRAFFIC CONTROL PLAN

SHEET
C5.01