



SITE DEVELOPMENT PLANS  
 FOR  
**FIELD OF DREAMS**  
 PEDESTRIAN PATH, PHASE 1  
 BLUFFTON, SOUTH CAROLINA

DATE: OCT 15, 2019  
 PROJECT NO.: 16024.07  
 DRAWN BY: MY/LW  
 CHECKED BY: WM

**BID SET ISSUE II,  
 NOT FOR  
 CONSTRUCTION**

REVISIONS:

DRAWING TITLE  
**DEMOLITION PLAN**

DRAWING NUMBER

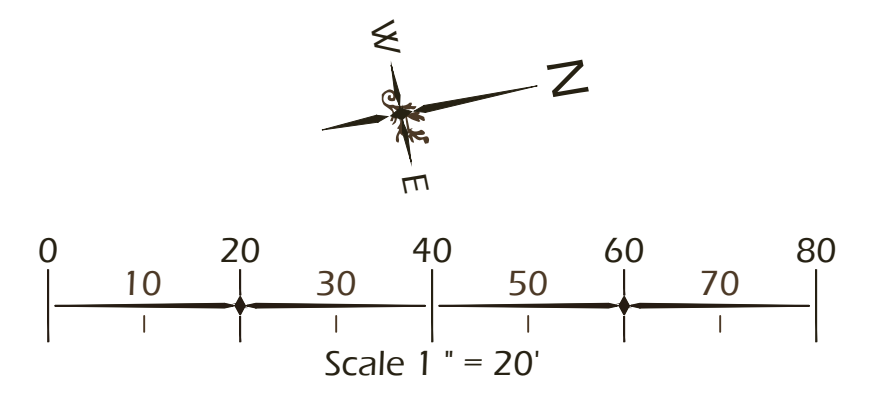
**L50**

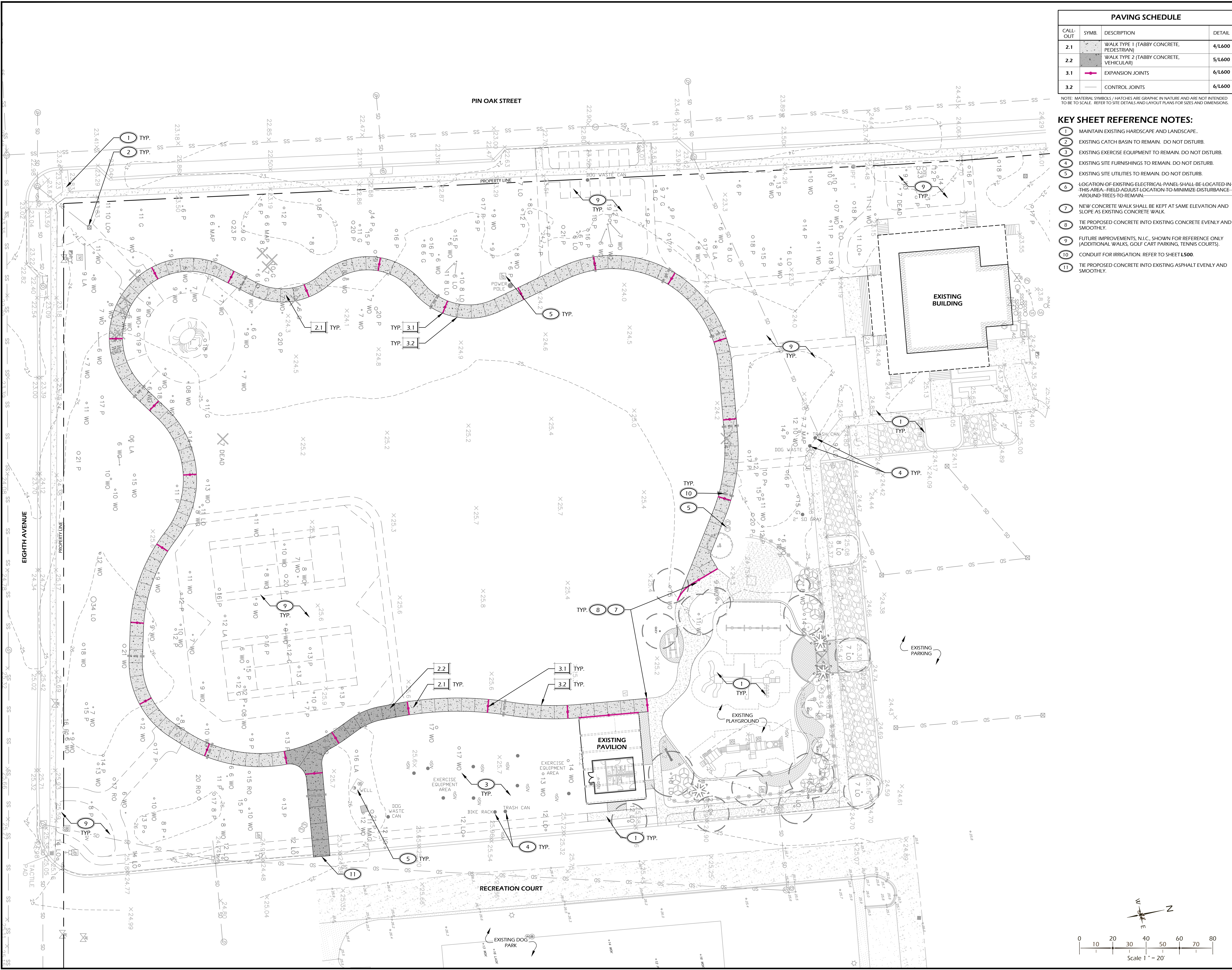
SITE PREP. / PLANT PROTECTION LEGEND			
CALL-OUT	SYMB.	DESCRIPTION	DETAIL
NA		TREE TO BE REMOVED	NA
1.1		TREE PROTECTION FENCE	1/L600
1.2		SILT FENCE	2/L600
1.3		CONSTRUCTION ENTRY	3/L600

NOTE: SEDIMENT AND EROSION CONTROL SYMBOLS ARE GRAPHIC IN NATURE AND ARE NOT INTENDED TO BE TO SCALE. REFER TO SITE DETAILS FOR SIZES AND DIMENSIONS.

**DEMOLITION REFERENCE NOTES:**

- 1 PROTECT EXISTING PAVEMENT(S) DURING CONSTRUCTION. PAVEMENT TO BE MAINTAINED AND INTEGRATED WITH NEW CONSTRUCTION.
- 2 EXISTING TREE TO REMAIN. DO NOT DISTURB, PROTECT IN PLACE.
- 3 EXISTING TREE TO BE REMOVED INCLUDING ROOTS AND STUMP. LEGALLY DISPOSE OF OFF SITE.
- 4 EXISTING ELECTRICAL PANEL SHALL BE REMOVED, SALVAGED AND RELOCATED—REFER TO KEY SHEET (L-100) FOR NEW LOCATION / PLACEMENT.
- 5 TREE REMOVAL TO BE DONE BY HAND WITHIN TREE PROTECTION FENCE AND OUTSIDE OF SILT FENCE.
- 6 LIMIT GRADING WITHIN TREE PROTECTION FENCE AREA TO HAND DIGGING, TAKING CARE NOT TO DISTURB ROOTS.
- 7 MITIGATE SOIL COMPACTION WITH 12" OF HARDWOOD MULCH BETWEEN TREE PROTECTION FENCE AND NEW WALKWAY.
- 8 EXISTING CURB, INCLUDING SUB-BASES AND ALL ASSOCIATED MATERIAL (REBAR, ETC.) TO BE REMOVED. SAW CUT CURB AT JOINT NEAREST TO PROPOSED WALK. LEGALLY DISPOSE OF OFF SITE.





PAVING SCHEDULE			
CALL-OUT	SYMB.	DESCRIPTION	DETAIL
2.1	[Pattern]	WALK TYPE 1 (TABBY CONCRETE, PEDESTRIAN)	4/L600
2.2	[Pattern]	WALK TYPE 2 (TABBY CONCRETE, VEHICULAR)	5/L600
3.1	[Symbol]	EXPANSION JOINTS	6/L600
3.2	[Symbol]	CONTROL JOINTS	6/L600

- KEY SHEET REFERENCE NOTES:**
- 1 MAINTAIN EXISTING HARDSCAPE AND LANDSCAPE.
  - 2 EXISTING CATCH BASIN TO REMAIN. DO NOT DISTURB.
  - 3 EXISTING EXERCISE EQUIPMENT TO REMAIN. DO NOT DISTURB.
  - 4 EXISTING SITE FURNISHINGS TO REMAIN. DO NOT DISTURB.
  - 5 EXISTING SITE UTILITIES TO REMAIN. DO NOT DISTURB.
  - 6 LOCATION OF EXISTING ELECTRICAL PANEL SHALL BE LOCATED IN THIS AREA. FIELD ADJUST LOCATION TO MINIMIZE DISTURBANCE AROUND TREES TO REMAIN.
  - 7 NEW CONCRETE WALK SHALL BE KEPT AT SAME ELEVATION AND SLOPE AS EXISTING CONCRETE WALK.
  - 8 TIE PROPOSED CONCRETE INTO EXISTING CONCRETE EVENLY AND SMOOTHLY.
  - 9 FUTURE IMPROVEMENTS, N.L.C. SHOWN FOR REFERENCE ONLY (ADDITIONAL WALKS, GOLF CART PARKING, TENNIS COURTS).
  - 10 CONDUIT FOR IRRIGATION. REFER TO SHEET L500.
  - 11 TIE PROPOSED CONCRETE INTO EXISTING ASPHALT EVENLY AND SMOOTHLY.

NOTE: MATERIAL SYMBOLS / HATCHES ARE GRAPHIC IN NATURE AND ARE NOT INTENDED TO BE TO SCALE. REFER TO SITE DETAILS AND LAYOUT PLANS FOR SIZES AND DIMENSIONS.



© 2019 WJK LTD.  
 DESIGN CONCEPTS, DRAWING SHEETS, SPECIFICATIONS, DETAILS, WRITTEN MATERIAL SHALL NOT BE USED OR REPRODUCED IN WHOLE OR IN PART IN ANY FORM WITHOUT PRIOR WRITTEN CONSENT OF WJK LTD.  
 THIS SHEET TO SCALE AT 30"x42"

SITE DEVELOPMENT PLANS  
 FOR  
**FIELD OF DREAMS**  
 PEDESTRIAN PATH, PHASE 1  
 BLUFFTON, SOUTH CAROLINA

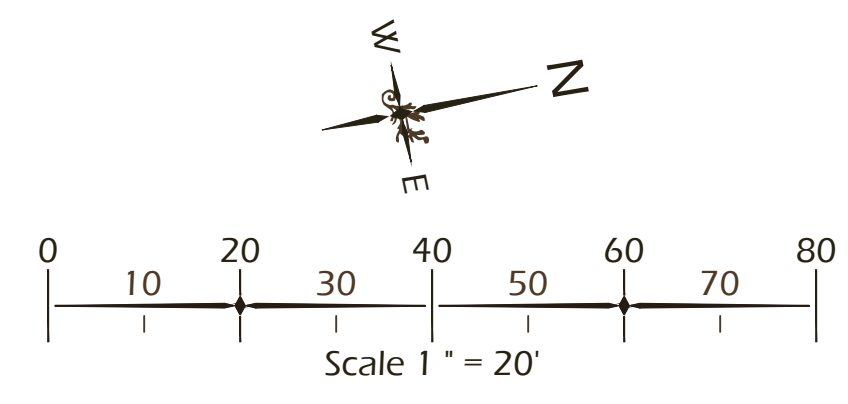
DATE: OCT 15, 2019  
 PROJECT NO.: 16024.07  
 DRAWN BY: MY/LW  
 CHECKED BY: WM

**BID SET ISSUE II,  
 NOT FOR  
 CONSTRUCTION**

REVISIONS:


DRAWING TITLE  
**KEY SHEET**

DRAWING NUMBER  
**L100**



SITE LAYOUT LEGEND			
CALL-OUT	SYMB.	DESCRIPTION	DETAIL
		POINT OF BEGINNING	

- LAYOUT REFERENCE NOTES:**
- PATHWAY TO BE STAKED PER PLAN AND VERIFIED BY LANDSCAPE ARCHITECT AND / OR OWNER PRIOR TO CONSTRUCTION.
  - NEW CONCRETE WALK SHALL BE KEPT AT SAME ELEVATION AND SLOPE AS EXISTING CONCRETE WALK.
  - TIE PROPOSED CONCRETE INTO EXISTING CONCRETE EVENLY AND SMOOTHLY.
  - NEW CONCRETE WALK SHALL BE PERPENDICULAR TO AND KEPT AT SAME ELEVATION AND SLOPE AS EXISTING ASPHALT SIDEWALK, TIE INTO EVENLY AND SMOOTHLY.

© 2019 WJK LTD.  
 DESIGN CONCEPTS, DRAWING, SHEETS, LOGS, SPECIFICATIONS, DETAILS, WRITTEN MATERIAL SHALL NOT BE USED OR REPRODUCED IN WHOLE OR IN PART IN ANY FORM WITHOUT PRIOR WRITTEN CONSENT OF WJK LTD.  
 THIS SHEET TO SCALE AT 30"x42"

SITE DEVELOPMENT PLANS  
 FOR  
**FIELD OF DREAMS**  
 PEDESTRIAN PATH, PHASE I  
 BLUFFTON, SOUTH CAROLINA

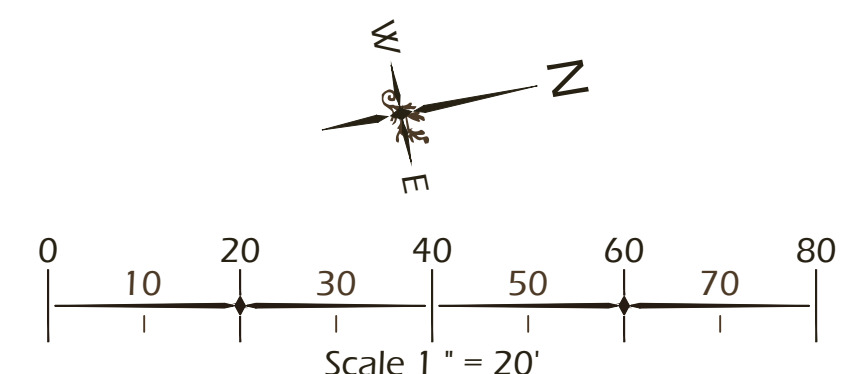
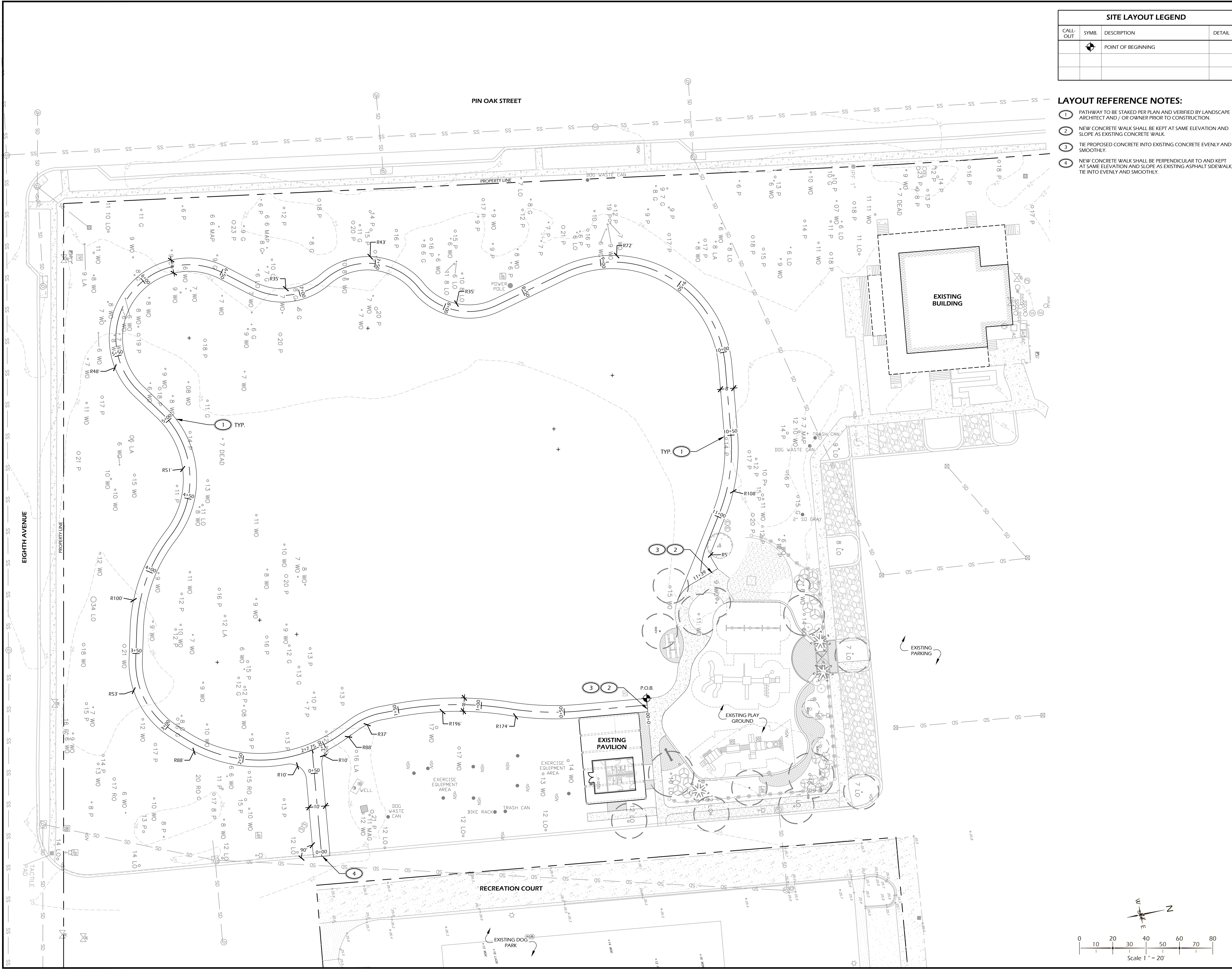
DATE: OCT 15, 2019  
 PROJECT NO.: 16024.07  
 DRAWN BY: MY/LW  
 CHECKED BY: WM

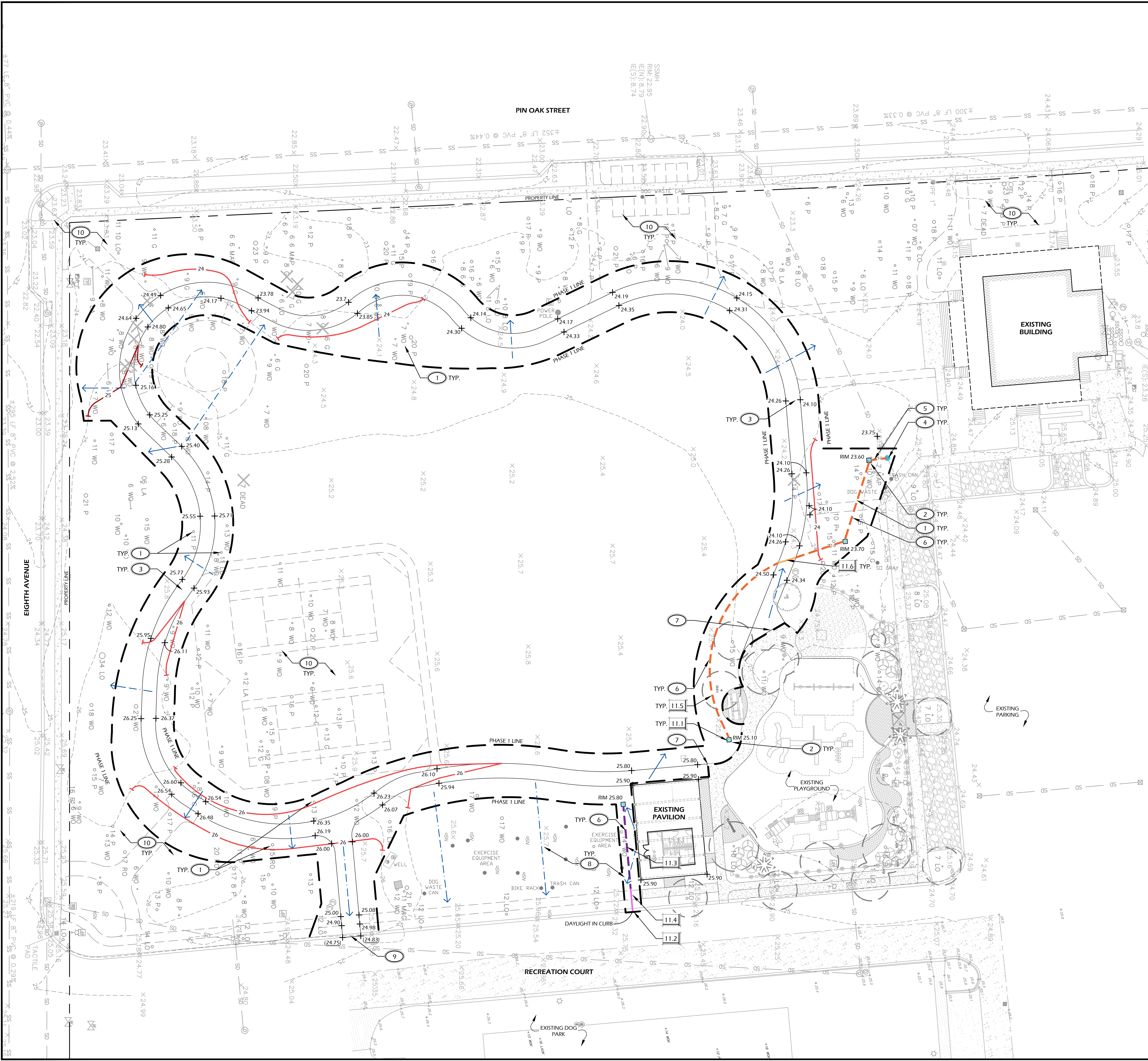
**BID SET ISSUE II,  
 NOT FOR  
 CONSTRUCTION**

REVISIONS:


DRAWING TITLE  
**LAYOUT PLAN**

DRAWING NUMBER  
**L200**





DRAINAGE LEGEND			
CALL-OUT	SYMB.	DESCRIPTION	DETAIL
11.1		12" AREA DRAIN	7/L600
11.2		PIPE AT CURB	8/L600
11.3		4" FRENCH DRAIN	9/L600
11.4		4" SOLID H.D.P.E. PIPE	NA
11.5		6" FRENCH DRAIN	10/L600
11.6		6" SOLID H.D.P.E. PIPE	NA

NOTE: DRAINAGE SYMBOLS ARE GRAPHIC IN NATURE AND ARE NOT INTENDED TO BE TO SCALE. REFER TO SITE DETAILS FOR SIZES AND DIMENSIONS.

GRADING LEGEND	
SYMB.	DESCRIPTION
	INTERPOLATED SPOT GRADE BASED OF EXISTING SPOT ELEVATION INFORMATION. CONTRACTOR TO DETERMINE PROPOSED SPOT ELEVATIONS PRIOR TO CONSTRUCTION. REPORT ANY DISCREPANCIES TO LANDSCAPE ARCHITECT.
	SPOT GRADE
	DRAINAGE ARROW
	PROPOSED CONTOUR MAJOR
	PROPOSED CONTOUR MINOR
	EXISTING GRADE

GRADING ABBREVIATIONS			
ABBR.	DESCRIPTION	ABBR.	DESCRIPTION
BC	BOTTOM OF CURB	HP	HIGH POINT
BS	BOTTOM OF STEP	RIM	TOP OF DRAIN
BW	BOTTOM OF WALL	TC	TOP OF CURB
FFE	FINISHED FLOOR ELEVATION	TS	TOP OF STEP
FG	FINISHED GRADE	TW	TOP OF WALL
LP	LOW POINT		

- GRADING REFERENCE NOTES:**
- MINIMIZE DISTURBANCE AROUND TREES TO REMAIN.
  - PITCH TO DRAIN INLET AT 2% MIN. (LAWN AREAS)
  - PROVIDE 2% MAX. CROSS SLOPE ON WALKWAY.
  - CONNECT PROPOSED DRAINS TO EXISTING DRAINAGE SYSTEM.
  - FIELD ADJUST PROPOSED DRAIN LINE AROUND EXISTING DRAINAGE LINE AS NEEDED.
  - FIELD LOCATE DRAIN LINE TO AVOID EXISTING TREE ROOTS.
  - TIE INTO EXISTING GRADE. MEET SMOOTHLY AND EVENLY.
  - PROVIDE POSITIVE DRAINAGE AWAY FROM BUILDING AND ADJACENT PROPERTY LINES.
  - TIE WALKWAY FLUSH WITH ASPHALT ROAD.
  - PROPOSED IMPROVEMENTS, N.I.C., SHOWN FOR REFERENCE ONLY.



© 2019 WJK LTD.  
 DESIGN: CONCEPTS, DRAWING SHEETS, LOGOS, SPECIFICATIONS, DETAILS, WRITTEN MATERIAL SHALL NOT BE USED OR REPRODUCED IN WHOLE OR IN PART IN ANY FORM WITHOUT PRIOR WRITTEN CONSENT OF WJK LTD.  
 THIS SHEET TO SCALE AT 30"x42"

SITE DEVELOPMENT PLANS  
 FOR  
**FIELD OF DREAMS**  
 PEDESTRIAN PATH, PHASE 1  
 BLUFFTON, SOUTH CAROLINA

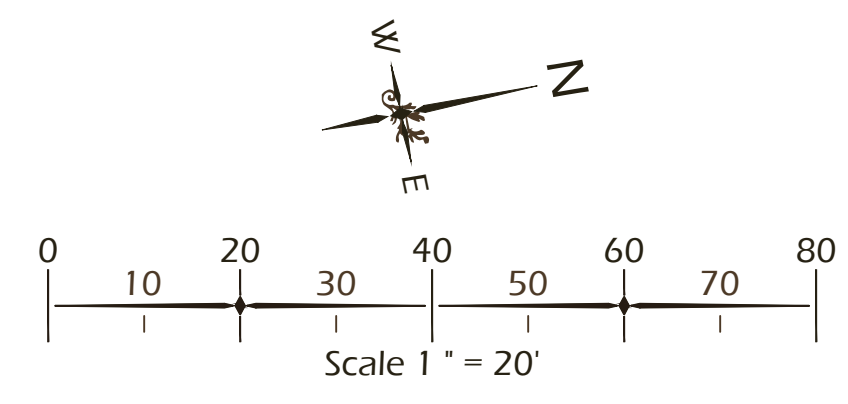
DATE: OCT 15, 2019  
 PROJECT NO.: 16024.07  
 DRAWN BY: MY/LW  
 CHECKED BY: WM

**BID SET ISSUE II,  
 NOT FOR  
 CONSTRUCTION**

REVISIONS:


DRAWING TITLE  
**GRADING PLAN**

DRAWING NUMBER  
**L300**





LIGHTING SCHEDULE				
CALL-OUT	SYMB.	QTY.	DESCRIPTION	DETAIL
10.1		28	BOLLARD LIGHT	NA

NOTE: LIGHTING SYMBOLS ARE GRAPHIC IN NATURE AND ARE NOT INTENDED TO BE TO SCALE. REFER TO SITE DETAILS FOR SIZES AND DIMENSIONS.

PLANT SCHEDULE			
Quantity	Abbrev.	Notes	Common Name
10,190	SODSF		Centipede Sod
35,030	MULCHSF	Pine Straw - all disturbed areas	Pine Straw

- PLANTING REFERENCE NOTES:**
- EXISTING TREES TO REMAIN.
  - EXISTING TREES TO BE REMOVED.
  - APPROXIMATE EXISTING EDGE OF SOD.
  - REVEGETATE DISTURBED AREAS DUE TO CONSTRUCTION WITH SOD, BLEND WITH EXISTING SOD.
  - MULCH DISTURBED AREAS DUE TO CONSTRUCTION, BLEND INTO WOODED AREA +10'.
  - PROTECT AREA DRAIN FROM CLOGGING DURING INSTALLATION OF PLANTS AND MULCH. MAINTAIN FUNCTIONALITY AND POSITIVE PITCH TO DRAIN.
  - 2" P.V.C. CONDUIT FOR IRRIGATION, 4" P.V.C. SLEEVES FOR ELECTRICAL CONDUIT AND WIRING. PLACE A MINIMUM OF 12" UNDER BOTTOM OF PAVING SURFACE.



© 2019 WJK LTD.  
 DESIGN: CONCEPTS, DRAWING, SHEETS, LOGOS, SPECIFICATIONS, DETAILS, WRITTEN MATERIAL SHALL NOT BE USED OR REPRODUCED IN WHOLE OR IN PART IN ANY FORM WITHOUT PRIOR WRITTEN CONSENT OF WJK LTD.  
 THIS SHEET TO SCALE AT: 30"x42"

SITE DEVELOPMENT PLANS  
 FOR  
**FIELD OF DREAMS**  
 PEDESTRIAN PATH, PHASE 1  
 BLUFFTON, SOUTH CAROLINA

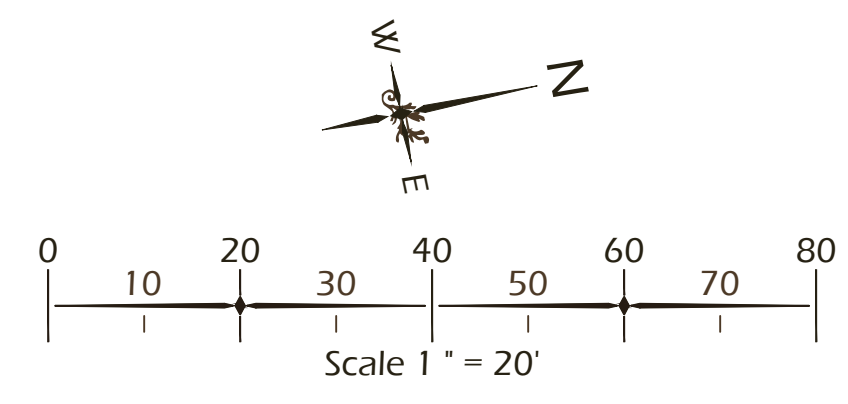
DATE: OCT 15, 2019  
 PROJECT NO.: 16024.07  
 DRAWN BY: MY/LW  
 CHECKED BY: WM

**BID SET ISSUE II,  
 NOT FOR  
 CONSTRUCTION**

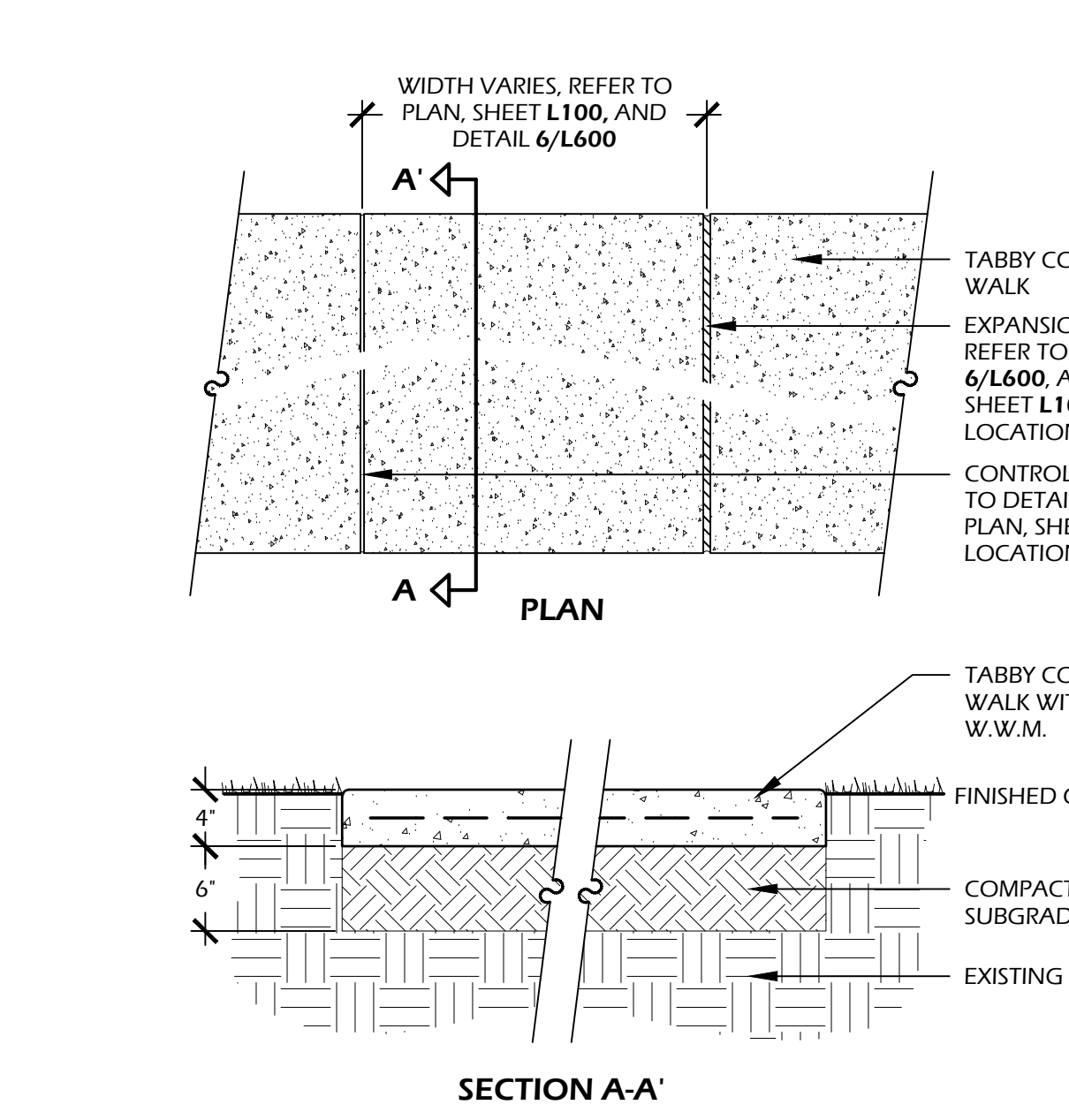
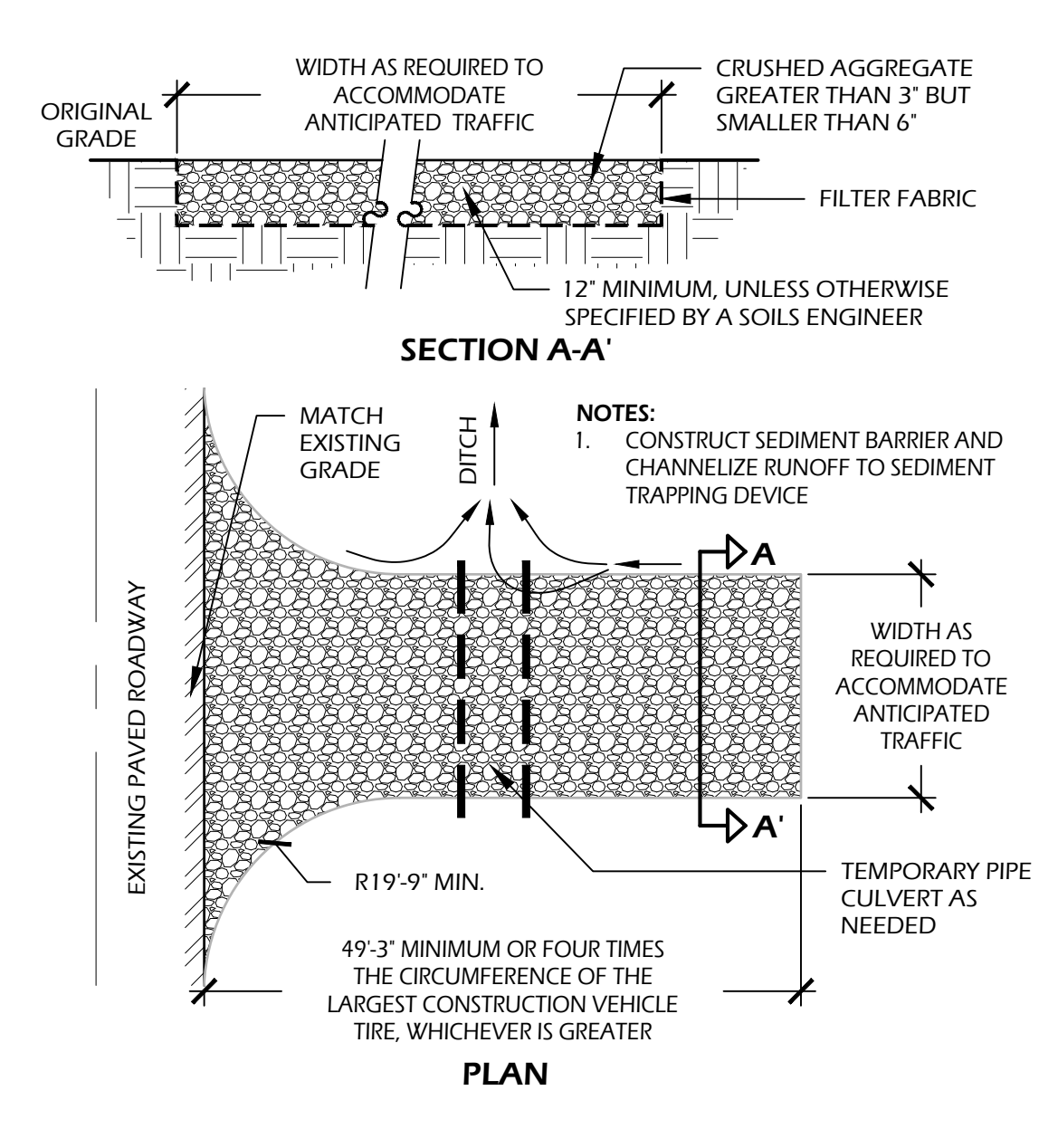
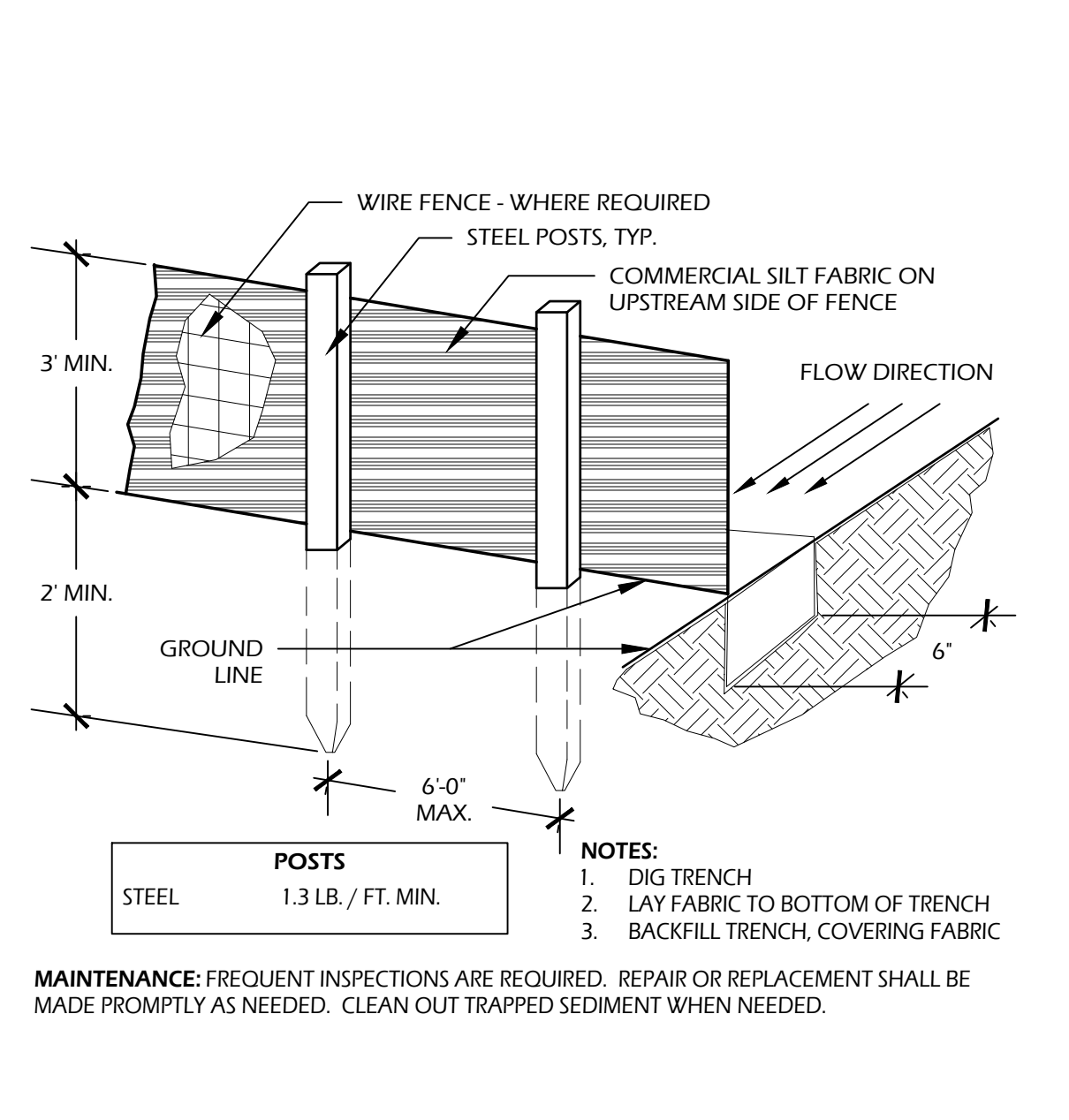
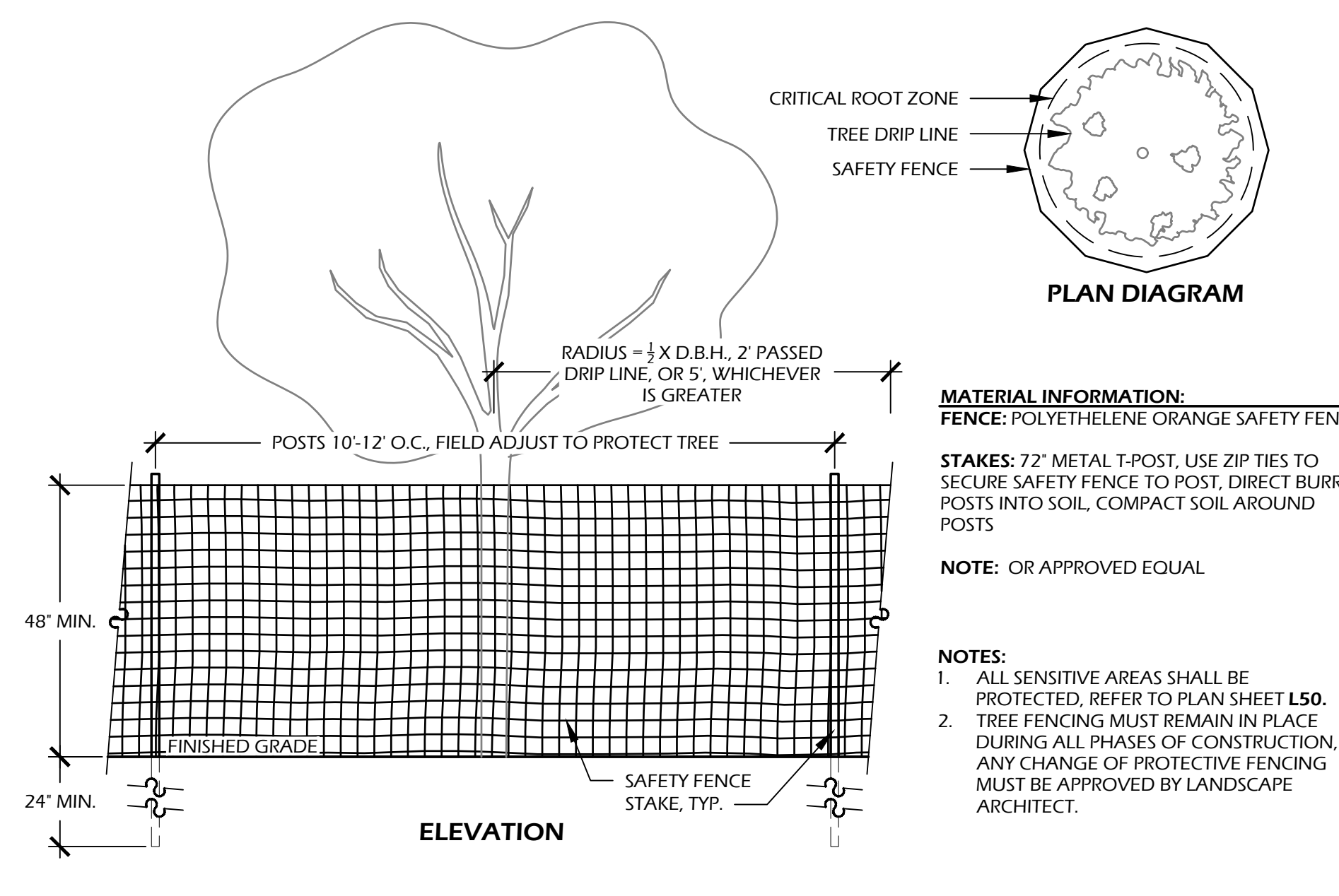
REVISIONS:


DRAWING TITLE  
**PLANTING PLAN**

DRAWING NUMBER  
**L500**



REVISIONS:

**CONCRETE INFORMATION:**  
 CONCRETE: 3,000 P.S.I. AT 28 DAYS  
 FINISH: TABBY SHELL

**SOIL INFORMATION:**  
 SOIL COMPACTION: 95% STANDARD PROCTOR

**TABBY SPEC:**  
 1. SHELL FINISH SHALL BE OYSTER SHELL MIX (EQUAL PARTS, SIZE #2, AND #3) HAND THROWN / SPREAD TO 100% COVERAGE ON FRESH POURED AND LEVELED CONCRETE.  
 2. HAND FLOAT UNTIL SHELL IS SUBMERGED, THEN AFTER 90% CURED, LIGHTLY PRESSURE WASH UNTIL SHELL IS EXPOSED.

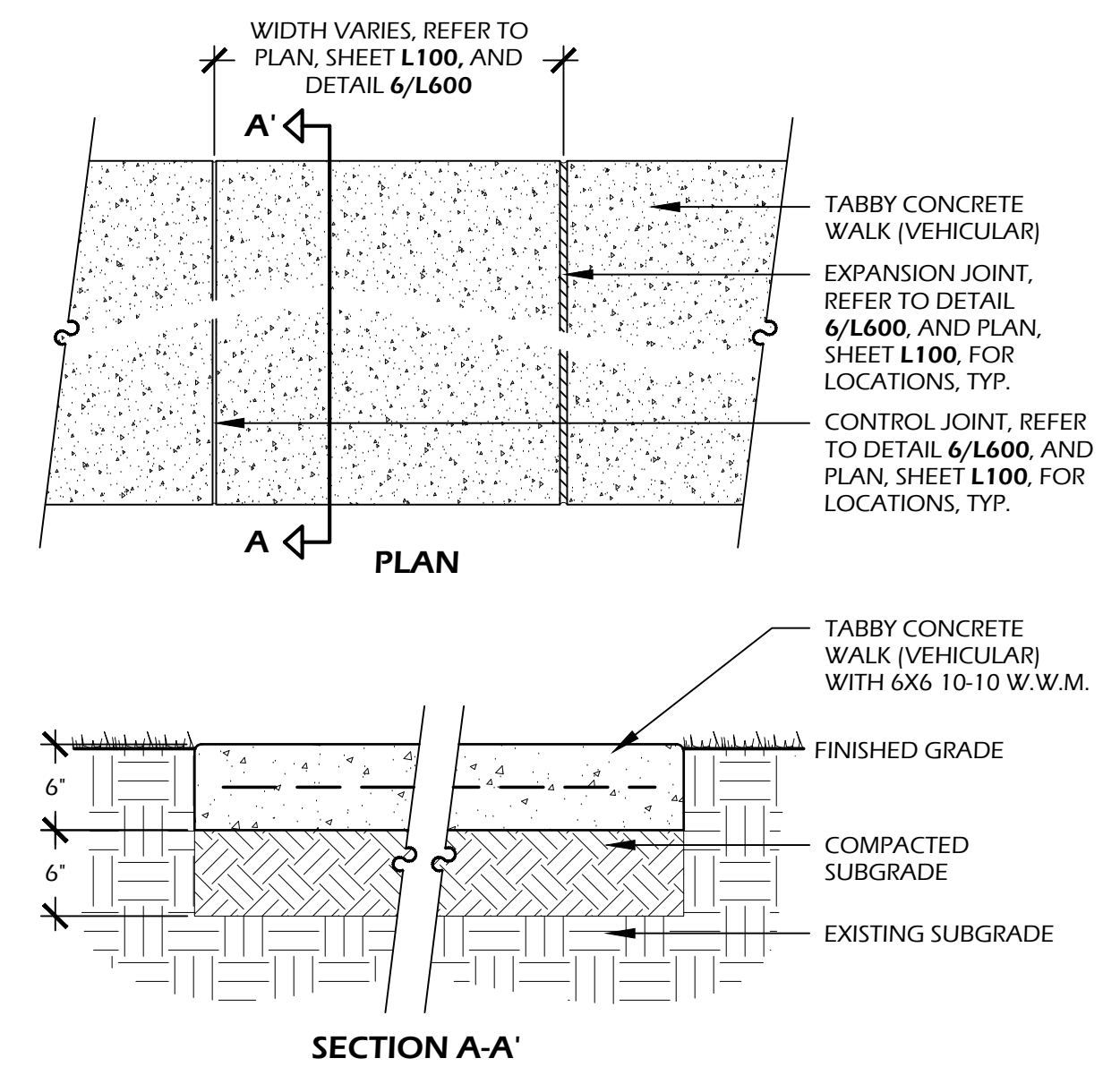
**NOTES:**  
 1. PROVIDE 1% MIN., 2% MAX. CROSS SLOPE ON ALL PAVED SURFACES FOR POSITIVE DRAINAGE.  
 2. REFER TO PLAN (SHEET L100) FOR WIDTHS OF WALK.  
 3. CONSTRUCT EXPANSION JOINTS WHERE WALK MEETS CURBS, STEPS, WALLS OR FIXED SLABS.  
 4. UPON REQUEST, CONTRACTOR SHALL PROVIDE 4"x4" SAMPLE OF CONCRETE WITH 2 SIZES OF OYSTER SHELL FINISH FOR APPROVAL BY OWNER OR LANDSCAPE ARCHITECT.

1 // L600 TREE PROTECTION FENCE  
 SCALE: 1/2" = 1'-0"

2 // L600 SILT FENCE  
 SCALE: 1" = 1'-0"

3 // L600 CONSTRUCTION ENTRY  
 SCALE: 1/2" = 1'-0"

4 // L600 WALK TYPE 1 (TABBY CONCRETE PEDESTRIAN)  
 SCALE: 1" = 1'-0"

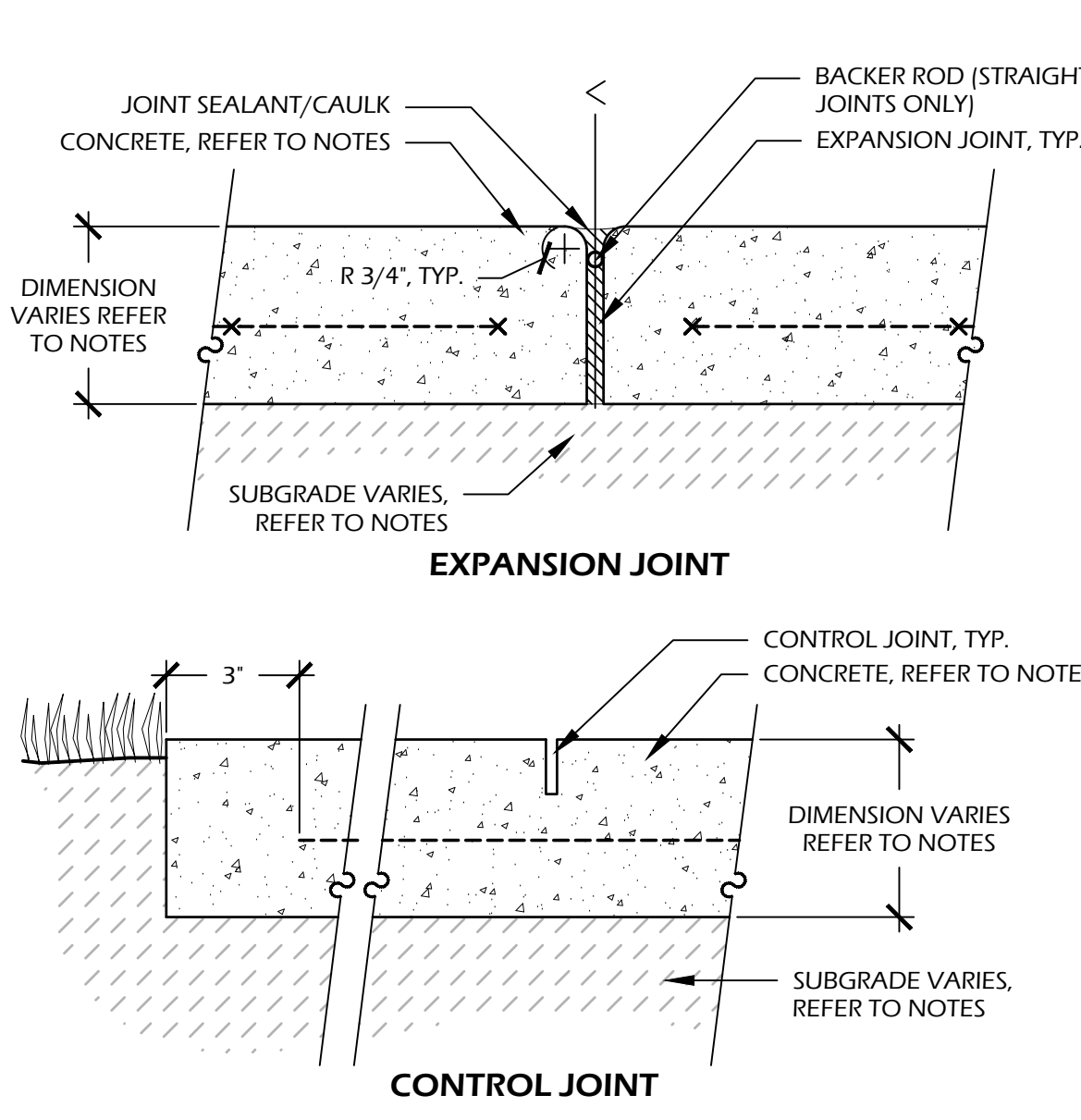


**CONCRETE INFORMATION:**  
 CONCRETE: 4,000 P.S.I. AT 28 DAYS  
 FINISH: TABBY SHELL

**SOIL INFORMATION:**  
 SOIL COMPACTION: 98% STANDARD PROCTOR

**TABBY SPEC:**  
 1. SHELL FINISH SHALL BE OYSTER SHELL MIX (EQUAL PARTS, SIZE #2, AND #3) HAND THROWN / SPREAD TO 100% COVERAGE ON FRESH POURED AND LEVELED CONCRETE.  
 2. HAND FLOAT UNTIL SHELL IS SUBMERGED, THEN AFTER 90% CURED, LIGHTLY PRESSURE WASH UNTIL SHELL IS EXPOSED.

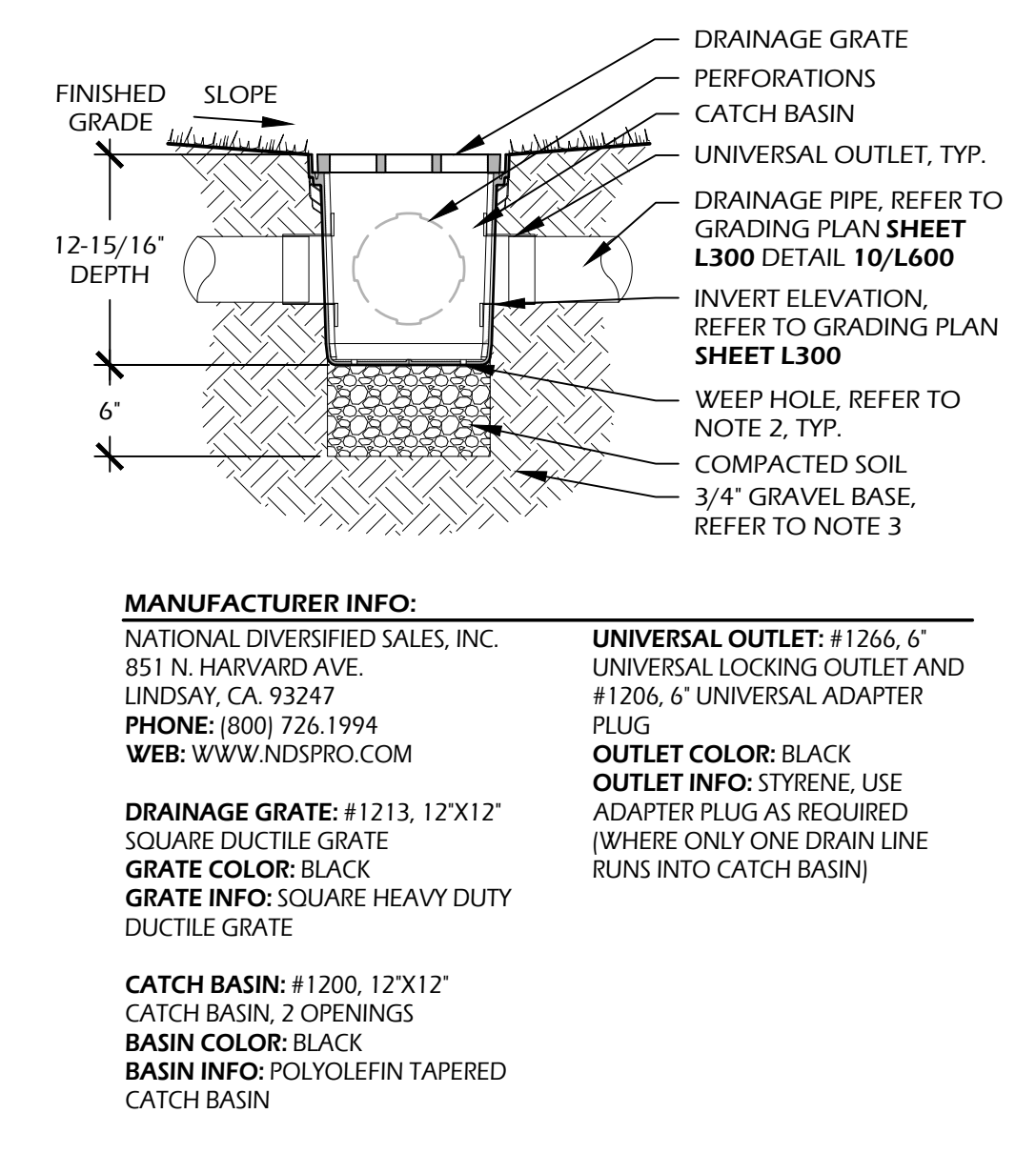
**NOTES:**  
 1. PROVIDE 1% MIN., 2% MAX. CROSS SLOPE ON ALL PAVED SURFACES FOR POSITIVE DRAINAGE.  
 2. REFER TO PLAN (SHEET L100) FOR WIDTHS OF WALK.  
 3. CONSTRUCT EXPANSION JOINTS WHERE WALK MEETS CURBS, STEPS, WALLS OR FIXED SLABS.  
 4. UPON REQUEST, CONTRACTOR SHALL PROVIDE 4"x4" SAMPLE OF CONCRETE WITH 2 SIZES OF OYSTER SHELL FINISH FOR APPROVAL BY OWNER OR LANDSCAPE ARCHITECT.



**EXPANSION JOINT INFORMATION:**  
 STRAIGHT JOINT: 3/8" PREFORMED FIBER EXPANSION JOINT.  
 CURVED JOINTS: POLYETHYLENE CLOSED CELL FLEXIBLE EXPANSION JOINT.

**CONTROL JOINT INFORMATION:**  
 CONTROL JOINT: SAW CUT 1/4" CONTROL JOINT TO 1/4" THE THICKNESS OF THE SLAB.

**NOTES:**  
 1. LOCATE EXPANSION JOINTS AT 24' O.C. MIN. OR 30' O.C. MAX. AND PROVIDE EXPANSION JOINTS AT LOCATIONS ADJACENT TO ALL EXISTING CONCRETE. REFER TO KEY SHEET L100 FOR MATERIALS.  
 2. FOR DEPTH AND SUBGRADE OF CONCRETE REFER TO DETAIL(S) 4/L600 & 5/L600.



**MANUFACTURER INFO:**  
 NATIONAL DIVERSIFIED SALES, INC.  
 851 N. HARVARD AVE.  
 LINDSAY, CA 93247  
 PHONE: (800) 726-1994  
 WEB: WWW.NDSPRO.COM

**UNIVERSAL OUTLET:** #1266, 6" UNIVERSAL LOCKING OUTLET AND #1206, 6" UNIVERSAL ADAPTER PLUG  
**OUTLET COLOR:** BLACK  
**OUTLET INFO:** STYRENE. USE ADAPTER PLUG AS REQUIRED (WHERE ONLY ONE DRAIN LINE RUNS INTO CATCH BASIN)

**DRAINAGE GRATE:** #1213, 12"x12" SQUARE DUCTILE GRATE  
**GRATE COLOR:** BLACK  
**GRATE INFO:** SQUARE HEAVY DUTY DUCTILE GRATE

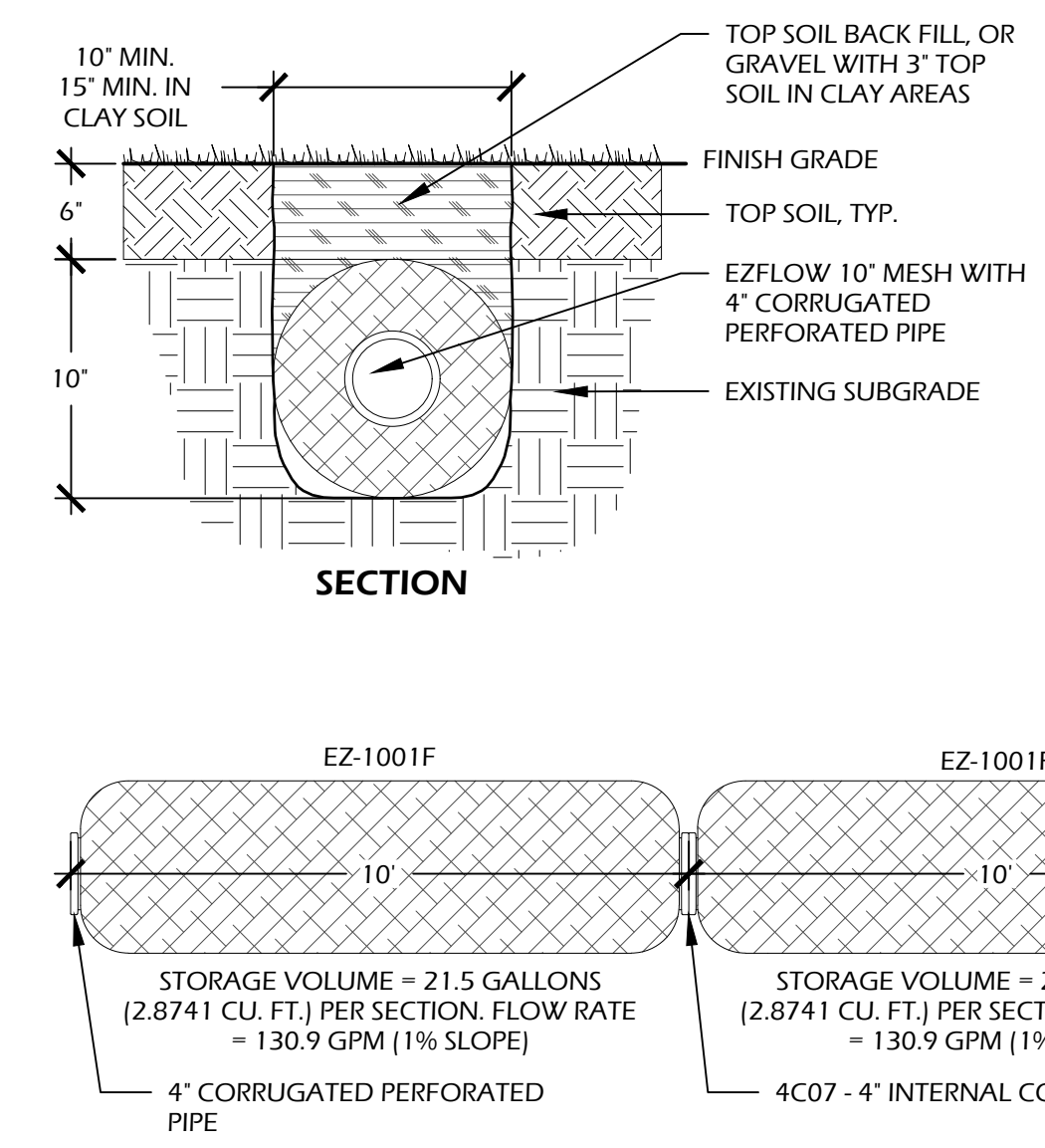
**CATCH BASIN:** #1200, 12"x12" CATCH BASIN, 2 OPENINGS  
**BASEIN COLOR:** BLACK  
**BASEIN INFO:** POLYOLEFIN TAPERED CATCH BASIN

**NOTES:**  
 1. THIS DETAIL IS USED FOR DESIGN INTENT ONLY. REFER TO TO MANUFACTURERS DETAIL AND SPECIFICATIONS FOR ACTUAL INSTALLATION.  
 2. DRILL WEEP HOLE TYPICAL OF 4 PLACES AT BOTTOM CORNERS.  
 3. GRAVEL BASE SHALL BE USED TO PREVENT STANDING WATER.  
 4. GRATE TO BE ATTACHED TO CATCH BASIN WITH SCREWS PROVIDED AT TIME OF INSTALLATION.  
 5. RISER (IF NEEDED) CAN BE CUT TO ACHIEVE EXACT ELEVATION, DO NOT USE OVER FIVE (5) RISERS WITH CATCH BASIN.  
 6. N.D.S. ADAPTERS THAT FIT THIS CATCH BASIN ARE AS FOLLOWS: #1242, #1243, #1245, #1266, AND #1889. USE #1206 IF PLUGGING AN OUTLET.  
 7. PERFORATION ON NON OPEN SIDES AND BOTTOM TO BE CUT OUT WHEN ADDING EXTRA OUTLETS.  
 8. EXISTING SOILS SHOULD BE EVALUATED TO ENSURE PROPER STRUCTURAL AND PERMEABILITY PROPERTIES.  
 9. INSTALLATION TO BE COMPLETED IN ACCORDANCE WITH MANUFACTURERS SPECIFICATIONS.  
 10. DO NOT SCALE DRAWING.  
 11. THIS DRAWING IS INTENDED FOR USE BY ARCHITECTS, ENGINEERS, CONTRACTORS, CONSULTANTS AND DESIGN PROFESSIONALS FOR PLANNING PURPOSES ONLY.  
 12. ALL INFORMATION CONTAINED HEREIN WAS CURRENT AT THE TIME OF DEVELOPMENT BUT MUST BE REVIEWED AND APPROVED BY THE PRODUCT MANUFACTURER TO BE CONSIDERED ACCURATE.  
 13. CONTRACTORS NOTE: FOR PRODUCT AND COMPANY INFORMATION VISIT WWW.CADDDETAILS.COM/INFO AND ENTER REFERENCE NUMBER 558-107 AND 558-192

5 // L600 WALK TYPE 2 (TABBY CONCRETE VEHICULAR)  
 SCALE: 1" = 1'-0"

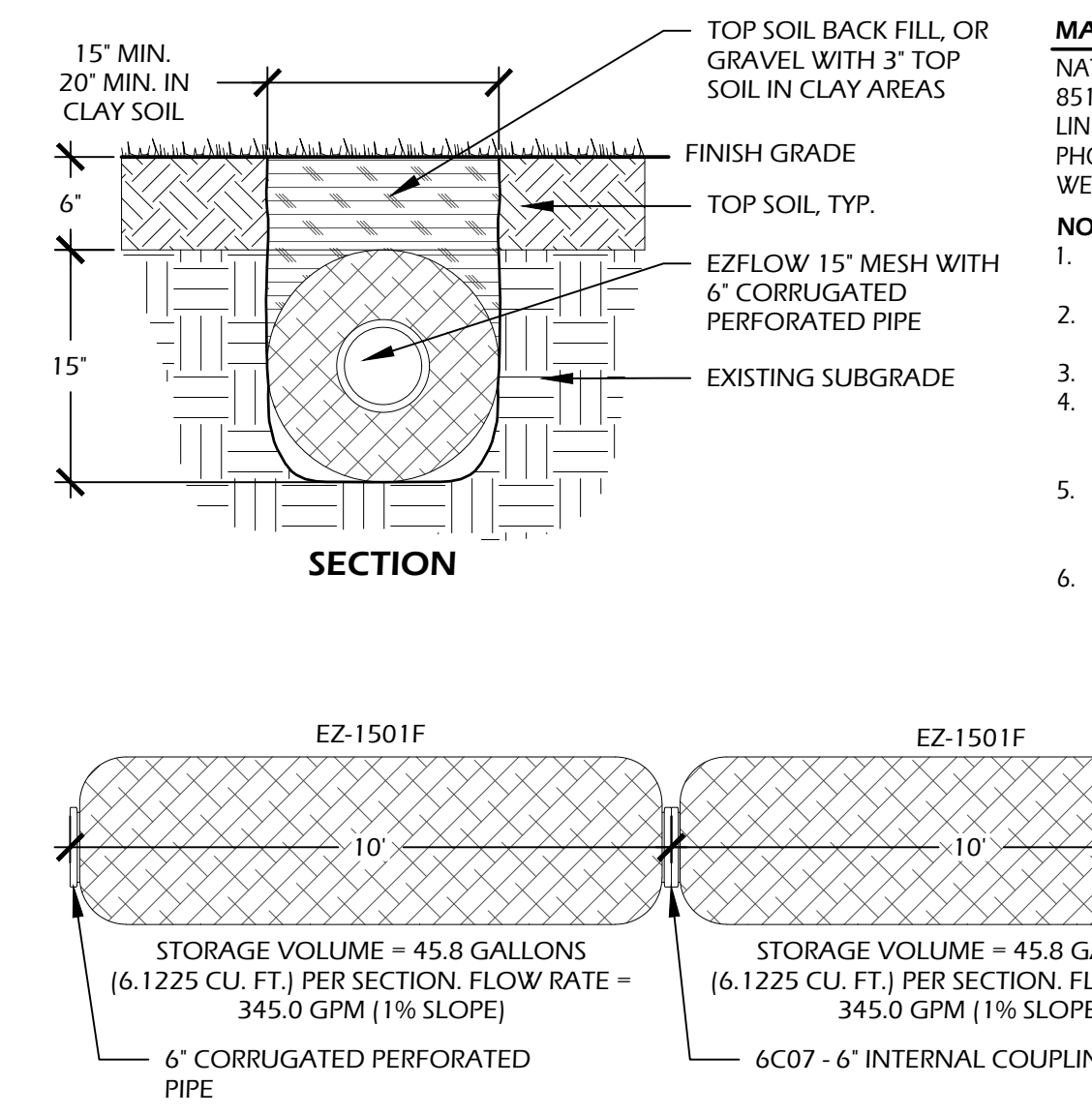
6 // L600 CONSTRUCTION JOINTS  
 SCALE: 3" = 1'-0"

7 // L600 12' AREA DRAIN  
 SCALE: N.T.S.



**MANUFACTURER INFO:**  
 NATIONAL DIVERSIFIED SALES, INC.  
 851 N. HARVARD AVE.  
 LINDSAY, CA 93247  
 PHONE: (800) 726-1994  
 WEB: WWW.NDSPRO.COM

**NOTES:**  
 1. INSTALLATION TO BE COMPLETED IN ACCORDANCE WITH MANUFACTURERS SPECIFICATIONS.  
 2. ADDITIONAL COVER MAY BE REQUIRED BASED ON SITE CONDITIONS. 12" COVER REQUIRED TO OBTAIN AN H-10 LOAD RATING.  
 3. DO NOT SCALE DRAWING.  
 4. THIS DRAWING IS INTENDED FOR USE BY ARCHITECTS, ENGINEERS, CONTRACTORS, CONSULTANTS AND DESIGN PROFESSIONALS FOR PLANNING PURPOSES ONLY.  
 5. ALL INFORMATION CONTAINED HEREIN WAS CURRENT AT THE TIME OF DEVELOPMENT BUT MUST BE REVIEWED AND APPROVED BY THE PRODUCT MANUFACTURER TO BE CONSIDERED ACCURATE.  
 6. CONTRACTORS NOTE: FOR PRODUCT AND COMPANY INFORMATION VISIT WWW.CADDDETAILS.COM/INFO AND ENTER REFERENCE NUMBER 558-027



**MANUFACTURER INFO:**  
 NATIONAL DIVERSIFIED SALES, INC.  
 851 N. HARVARD AVE.  
 LINDSAY, CA 93247  
 PHONE: (800) 726-1994  
 WEB: WWW.NDSPRO.COM

**NOTES:**  
 1. INSTALLATION TO BE COMPLETED IN ACCORDANCE WITH MANUFACTURERS SPECIFICATIONS.  
 2. ADDITIONAL COVER MAY BE REQUIRED BASED ON SITE CONDITIONS. 12" COVER REQUIRED TO OBTAIN AN H-10 LOAD RATING.  
 3. DO NOT SCALE DRAWING.  
 4. THIS DRAWING IS INTENDED FOR USE BY ARCHITECTS, ENGINEERS, CONTRACTORS, CONSULTANTS AND DESIGN PROFESSIONALS FOR PLANNING PURPOSES ONLY.  
 5. ALL INFORMATION CONTAINED HEREIN WAS CURRENT AT THE TIME OF DEVELOPMENT BUT MUST BE REVIEWED AND APPROVED BY THE PRODUCT MANUFACTURER TO BE CONSIDERED ACCURATE.  
 6. CONTRACTORS NOTE: FOR PRODUCT AND COMPANY INFORMATION VISIT WWW.CADDDETAILS.COM/INFO AND ENTER REFERENCE NUMBER 558-028

8 // L600 PIPE AT CURB  
 SCALE: N.T.S.

9 // L600 4' FRENCH DRAIN  
 SCALE: N.T.S.

10 // L600 6' FRENCH DRAIN  
 SCALE: N.T.S.