



SCOPE OF WORK – Waterway Elementary School CANOPY

1.00 Project:

The following is summary of work required for the installation of a new canopy walkway covering.

Project Location: 700 Sandridge Road, Little River, SC 29566

Owner: Horry County Schools

SPECIFICATION 10530 – EXTRUDED ALUMINUM WALKWAY COVERS

PART 1 - GENERAL

1.01 Related Documents

A. Drawings and general provisions of Contract, including General and Supplementary Conditions and Division 1 Specification Sections, shall apply to work specified in this section.

1.02 General Description of Work

A. Work in this section shall include design, fabrication and installation of a complete flat, gable, or pitched extruded aluminum canopy system with welded drain beams and trusses in accordance with the drawings and this specification.

B. This work includes the provision of all labor, tools, equipment, supervision, materials and administration to integrate the work outlined in this project manual.

C. The Contractor is responsible for identifying the location of all utilities. Any utilities that are interrupted or damaged by the Contractor or subcontractor must be repaired before the Contractor leaves the job site that day. Any interruption in service will need to be coordinated and approved in advance with the HCS Project Manager.

D. Work in this section shall include design, fabrication and installation of a completely welded, extruded aluminum canopy system. All work shall be in complete accordance with the aeriels and this specification.

1.03 References

- A. Aluminum Design Manual 2000, Specifications & Guidelines for Aluminum Structures.
- B. ASCE 7, Minimum Design Loads for Buildings and Other Structures.
- C. American Architectural Manufacturers Association (AAMA)
- D. American Society for Testing and Materials (ASTM)

1.04 Submittals

- A. Product Data: Submit manufacturer's product information, specifications and installation instructions for components and accessories.
- B. Shop Drawings: Submit complete erection drawings showing attachment system, column and gutter beam framing, transverse cross sections, covering and trim details, and option installation details to clearly indicate proper assembly of components. Detailed shop drawings shall be submitted, sealed by a State Registered Structural Engineer.
- C. Certification: Submit written Certification prepared and signed by a State Registered Structural Engineer verifying that framing design will safely resist wind uplift loading requirements of the Standard Building Code, latest edition as referenced in State Requirements for Educational Facilities 1999 and wind loading requirements of ANSI/ASCE 7.
- D. Design and engineering of canopy footings and attachment surfaces are not covered in this specification and scope of work.

1.05 Quality Assurance

- A. Codes and standards: Comply with provisions of the following except as otherwise indicated: Standard building code, latest addition with amendments, if any. AWS (American Welding Society) standards for structural aluminum welding.
- B. Manufacturer: Obtain aluminum covered walkway system from only one (1) manufacturer, although several may be indicated as offering products complying with requirements.
- C. Installer Qualifications: Firm with not less than three (3) years experience in installation of aluminum walkway covers of type, quantity and installation methods similar to work of this section.
- D. Field Measurements: Take field measurements prior to preparation of shop drawings and fabrication where possible, to insure proper fitting of work.
- E. Coordination: Coordinate work of this section with work of other sections which interface with covered walkway system (sidewalk, curbs, building fascias, etc.).

1.06 Warranty

- A. Provide manufactures standard one-year installation warranty.
- B. Provide manufactures standard one-year warranty on finish, metal failure and fastener failure from date of substantial completion.

PART 2 - PRODUCT

2.01 Manufacturers

A. Contract documents are based on products manufactured by:

- **East Coast TVM, LLC www.ectvm.com**
- **Ventu-Lite Products**
- **Ventilated Awnings Corp**
- **Approved Equal**

B. Interested manufacturers will be considered for substitution only when the following conditions are met: Complete details, including connections and structural calculations showing loads applied in accordance with the specification, must be submitted to the owner / architect for review. Submit complete details with structural properties (moment of inertia, section modulus, modulus of elasticity, etc.) for all proposed sections (bents, columns, decking and other structural members).

2.02 Materials

A. Aluminum Extrusions: All sections shall be extruded aluminum 6063 alloy, heat treated to T-6 temper.

B. Finishes: For factory baked enamel finish, specify AAMA 2603. Color to be Dark Bronze to match existing canopy color.

2.03 Components

- A. Columns: shall be 4" x 4". Columns shall be radius cornered tubular extrusions of size specified by manufacturer's structural engineer with cutout and internal diverter for drainage where indicated. Circular downspout opening in column is not acceptable.
- B. Beams: shall be 4" x 6" beams with open-top tubular extrusions, top edges thickened for strength and designed to receive deck members in self-flashing manner.
- C. Deck: Deck shall be 6" x 3" x .060" pan & cap extruded self-flashing sections interlocking into a composite unit.
- D. Fascia: Fascia shall be 6" x 1" false fascia profile.
- E. Flashing: Flashing shall be .032 aluminum (min.).

2.04 Fabrication

A. Drainage: Water shall drain internally from deck to beams to columns, for discharge out to rain diverters at or below ground level as indicated on architectural drawings.

B. Deck Construction: Deck shall be manufactured of extruded modules that interlock in a self-flashing manner. Interlocking joints shall be positively fastened at 18" O.C. creating a monolithic structural unit capable of developing the full strength of the sections. The fastenings must have minimum shear strength of 350 pounds each. Deck shall be assembled with sufficient camber to offset dead load deflection.

PART 3 - EXECUTION

3.01 Preparation

A. Erection shall be performed after all concrete, masonry, and roofing work in the vicinity is complete and cleaned.

3.02 Installation

A. Column Sleeves: Column sleeves (styrofoam block-outs) or anchor bolts (if required) shall be furnished by canopy manufacturer and installed by the General Contractor.

B. Erection: Protective cover shall be erected true to line, level and plumb.

3.03 Cleaning

A. All protective cover components shall be cleaned promptly after installation.

3.04 Protection

A. Extreme care shall be taken to protect materials during and after installation.

5. Specifics:



HORRY COUNTY SCHOOLS – Waterway Elementary School

The yellow areas represent the locations of the new canopies.

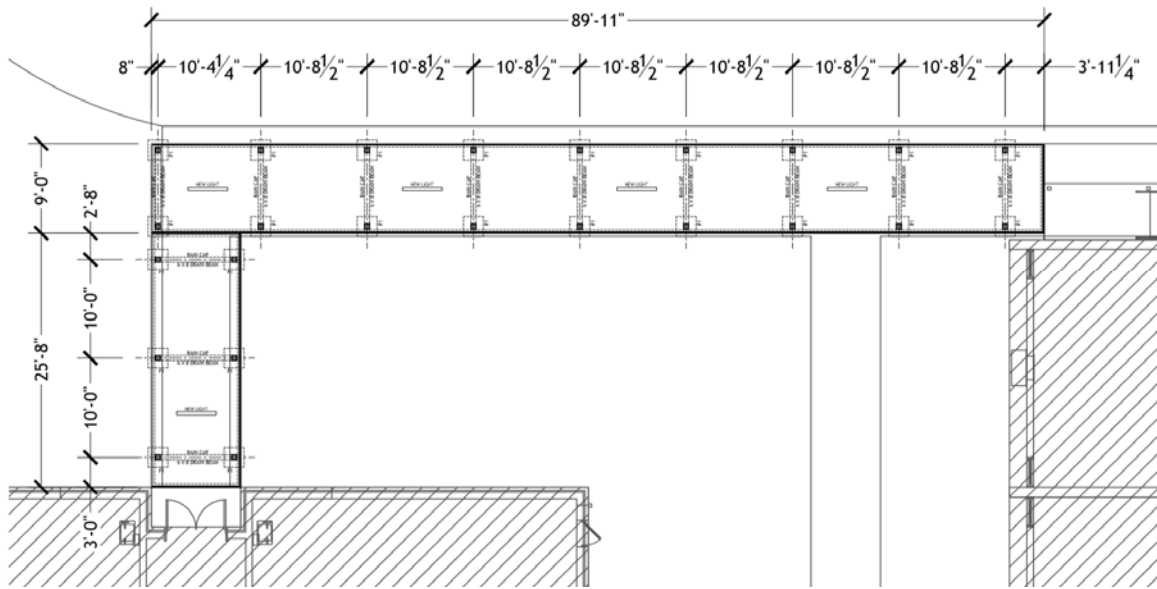
The project will be a turn key job, which includes the following: canopy, footings, lights, and etc.

Notes:

- The overall canopy width is 8'-6" wide.
- The existing sidewalk is 8'.
- The length of the new canopy is +/- 97' of canopy to the existing
- A light will be added every other section.
- Please coordinate the installation of footer with the existing drainage and catch basin.

Contractor Initials ____ District Initials ____

Canopy - Typ. Spacing (for reference only)



Contractor Initials ____ District Initials ____

SCOPE OF WORK – WALKWAY COVERING
HCS FACILITIES – WATERWAY ELEMENTARY SCHOOL

VISION 4

Vandal Resistant

VPF 4 Series Fluorescent



WALL / CEILING/
PENDANT MOUNT
LAMPS: T5, T5HO

Fixture Type	Date
Job Name	Approved By
Catalog Number	

SPECIFICATIONS

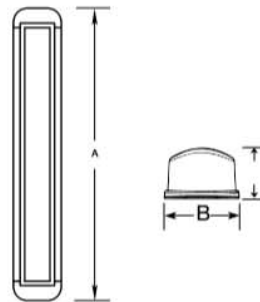
ADA Compliant



- Description** The Vision 4 series features an all aluminum construction and optional wet location listing which allows it to be used in many challenging environmental conditions. Designed in conjunction with an ophthalmologist, the polycarbonate lens provides complete control of glare and lamp image while maintaining the high efficiency of clear optical material. The Vision 4 series can be row mounted to any length. Natatorium finish is standard for all versions of this fixture.
- Housing** Marine grade heat treated extruded aluminum. Chemically primed and finished with robotically applied polyester powder coat.
- Lens** Extruded UV stabilized opal polycarbonate with integral prisms. Maximum wall thickness 0.160". Secured to housing with die cast aluminum clamps and stainless steel TORX® head screws.
- End Caps** Die-cast marine grade aluminum with conduit knockouts that are visible from interior of end cap.
- Ballast** Electronic high frequency ballast with less than 10% total harmonic distortion, 120V-277V only. 347V optional.
- Sockets** Precision spring loaded snap type for maximum impact damping.
- UL Listing** U.L., C.U.L., Damp Standard, Wet optional.
- Lifetime Warranty** Luminaire LED Incorporated will repair or replace any fixture damaged due to vandalism for the lifetime of the installation.

DIMENSIONAL DATA

	A	B	C
VPF42HO	26.10	4.35	2.58
VPF43HO	37.91	4.35	2.58
VPF44HO	49.72	4.35	2.58



5 Sutton Place
P.O. Box 2162
Edison, NJ 08818

P. 732.549.0056
F. 732.549.9737

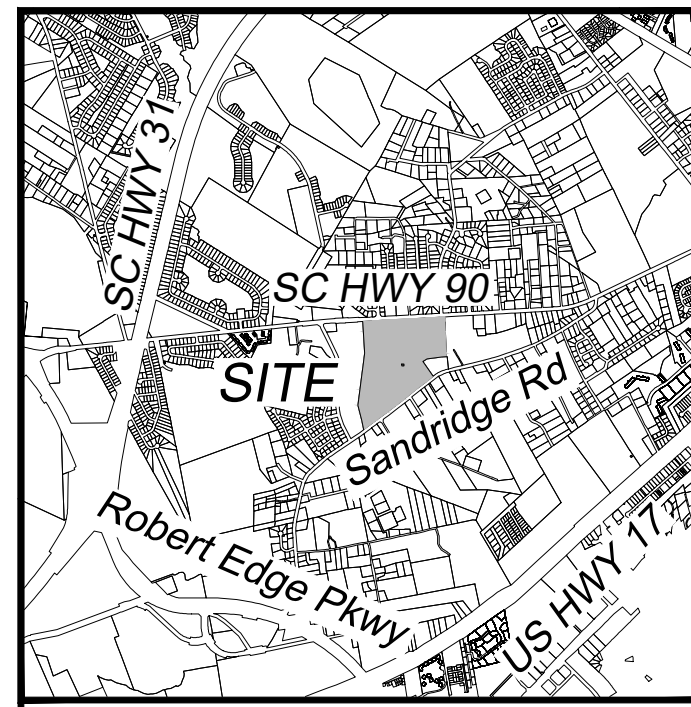
Luminaire LED Incorporated products are manufactured in the USA with components purchased from USA suppliers, and meet the Buy American requirements under the ARRA. Content of specification sheets is subject to change; please consult our website for current product information.

Rev: 2/17

Contractor Initials ____ District Initials ____

SCOPE OF WORK – WALKWAY COVERING
HCS FACILITIES – WATERWAY ELEMENTARY SCHOOL

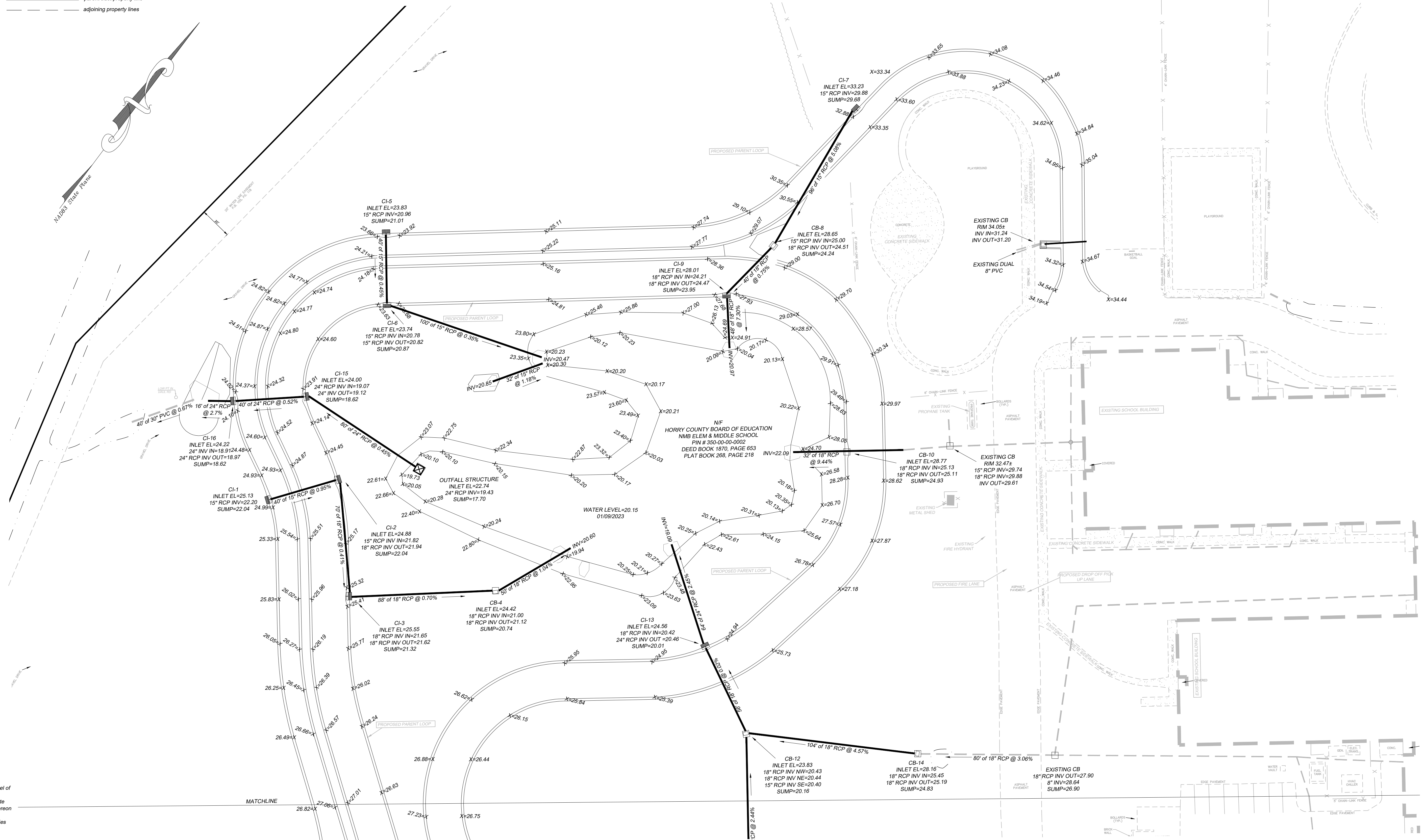
THIS DRAWING IS FOR INFORMATIONAL PURPOSES ONLY. THE CONTRACTOR MUST FIELD VERIFY EXISTING CONDITIONS



Vicinity Map - Not to Scale

Line Work Legend
 --- adjoining RW property lines
 --- parent tract property line
 --- adjoining property lines

Legend
 ○ - corner found (noted)
 ⊙ - 5/8" non rebar set (unless noted)
 ⊗ - pk nail found
 ⊠ - concrete monument found
 EOP - edge of pavement
 BOC - back of curb
 △ - map / computed point



- Reference**
- Deed Book 1870, Page 653.
 - Plat Book 268, Page 218.
- Notes**
- This property is subject to all easements and restrictions of record.
 - This document represents a Stormwater Asbuilt Survey of an existing parcel of record.
 - This property is located in flood zone "X" as shown on Flood Insurance Rate Map number 45051C 0606K dated 12/16/2021. Flood zone lines shown hereon are scaled and approximate only.
 - Existing Tax Map Parcel numbers and references for the adjoining properties are as shown (if applicable) on the face of this plat.
 - No title search has been performed by this office.
 - Parent Pin Map No. 350-00-00-0002
 - This survey is valid only if a print of the same has the original signature and embossed seal of the surveyor.
 - No subsurface or environmental conditions have been considered as part of this survey and no statement has been made concerning the locations of underground utilities or facilities that may affect the use or development of this property.
 - Bearings based on South Carolina NAD83 State Plane Coordinate System. All distances are horizontal ground distance, not grid distances.

**3535 MEETING ST.
 Loris, SC 29526
 Phone: (843) 756-2657**

DRAWN BY: LRG	JOB# 2022-236	REVISIONS:
CLOSURE CHECKED BY: DAG	DATE OF SURVEY:	
APPROVED BY: BWS	01/13/2023	

Stormwater Asbuilt Survey
 of
Pin# 350-00-00-0002
 Containing 52 ± Acres Total
 Little River Township, Horry County, South Carolina
 for
Horry County Board of Education

GRAPHIC SCALE

(IN FEET)
 1 inch = 30 ft.

SHEET 1 OF 2

		<p><i>Certificate of Accuracy</i> I hereby state that to the best of my professional knowledge, information, and belief, the survey shown herein was made in accordance with the requirements of the Standards of Practice Manual for Surveying in South Carolina, and meets or exceeds the requirements for a Class A survey as specified therein; also there are no visible encroachments or projections other than shown.</p>
Barry W. Suggs	PLS# 25438	DATE