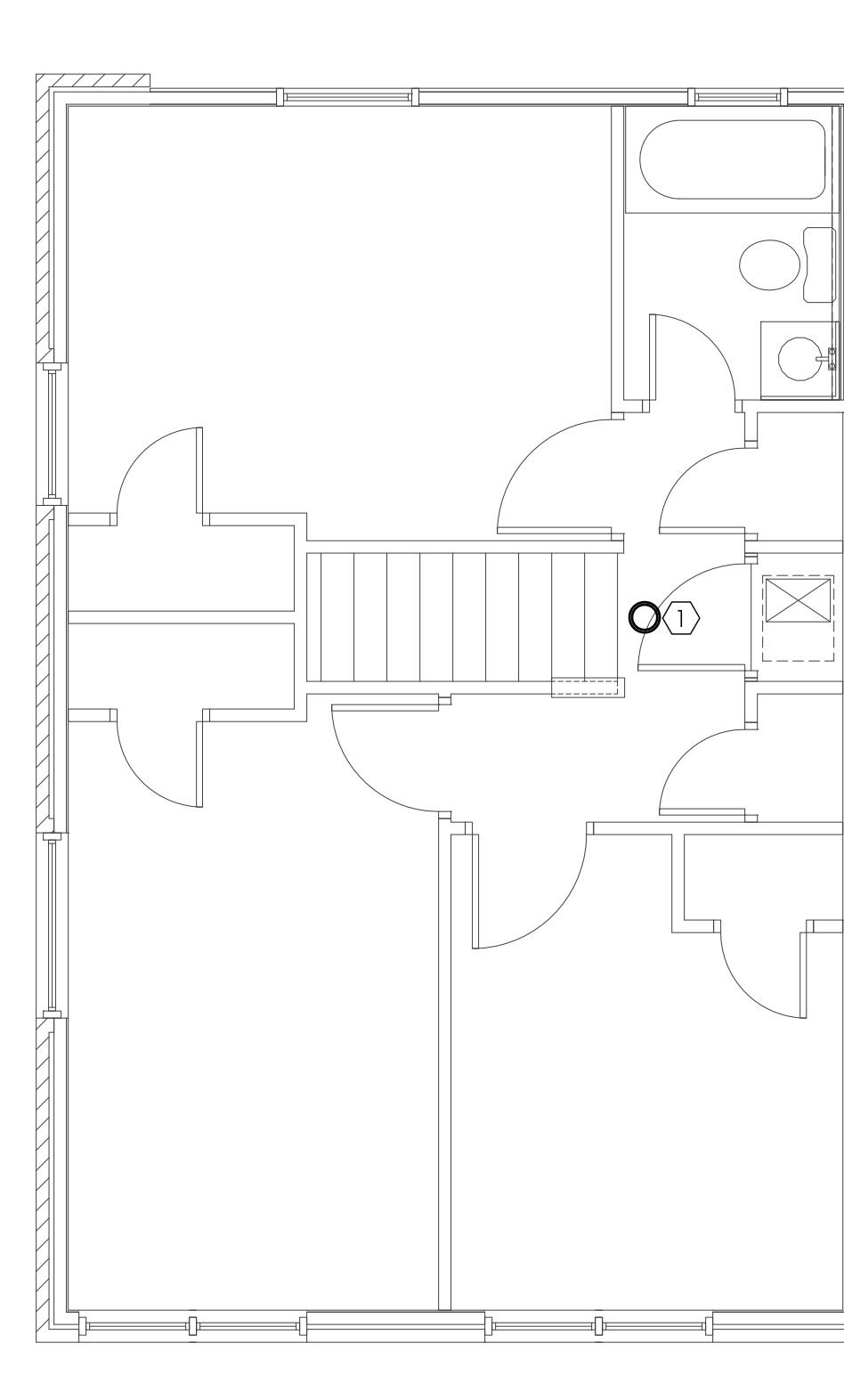
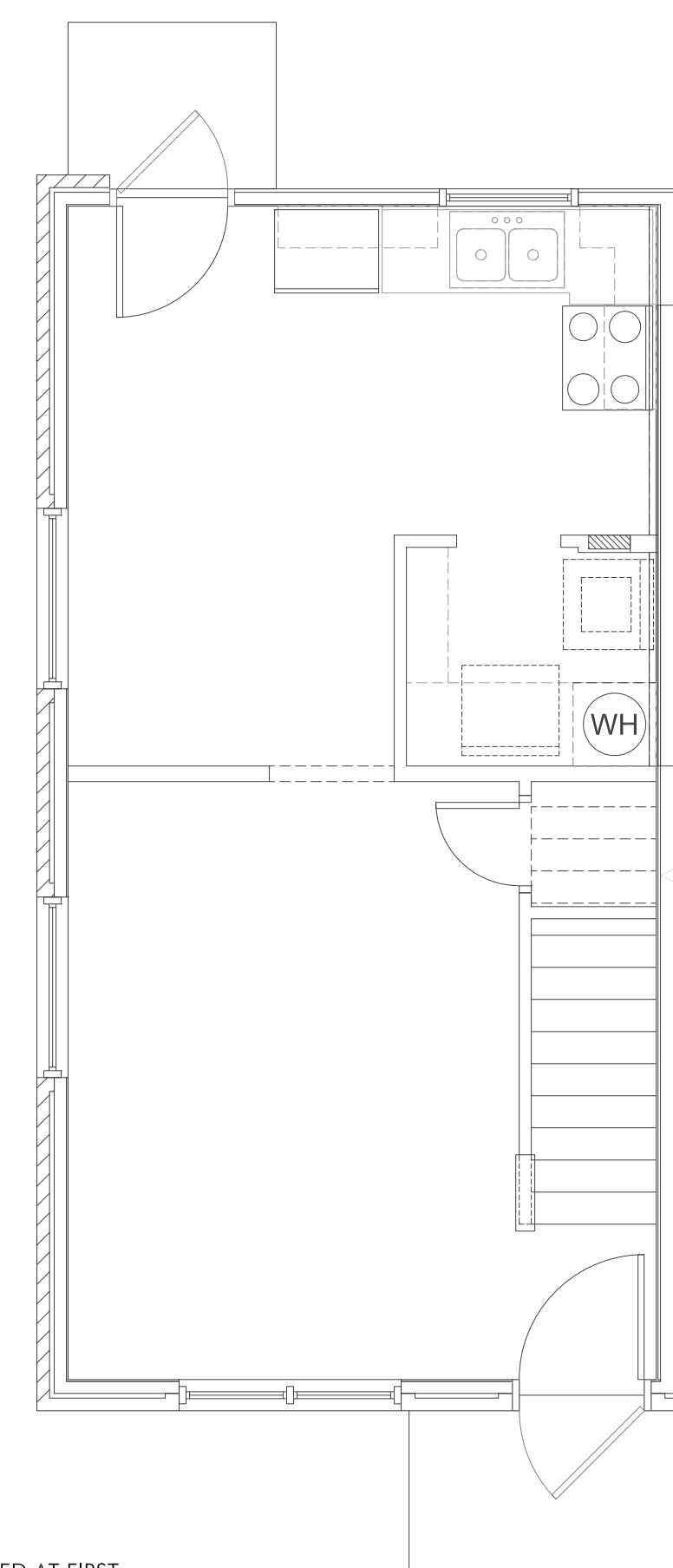


NOTE:
NO ELECTRICAL WORK REQUIRED AT FIRST FLOOR, SHOWN FOR REFERENCE ONLY.

3 FIRST FLOOR PLAN - LIGHTING - BUILDINGS E, F & G
SCALE: 1/4" = 1'-0" 3BR - UNIT TYPE 4

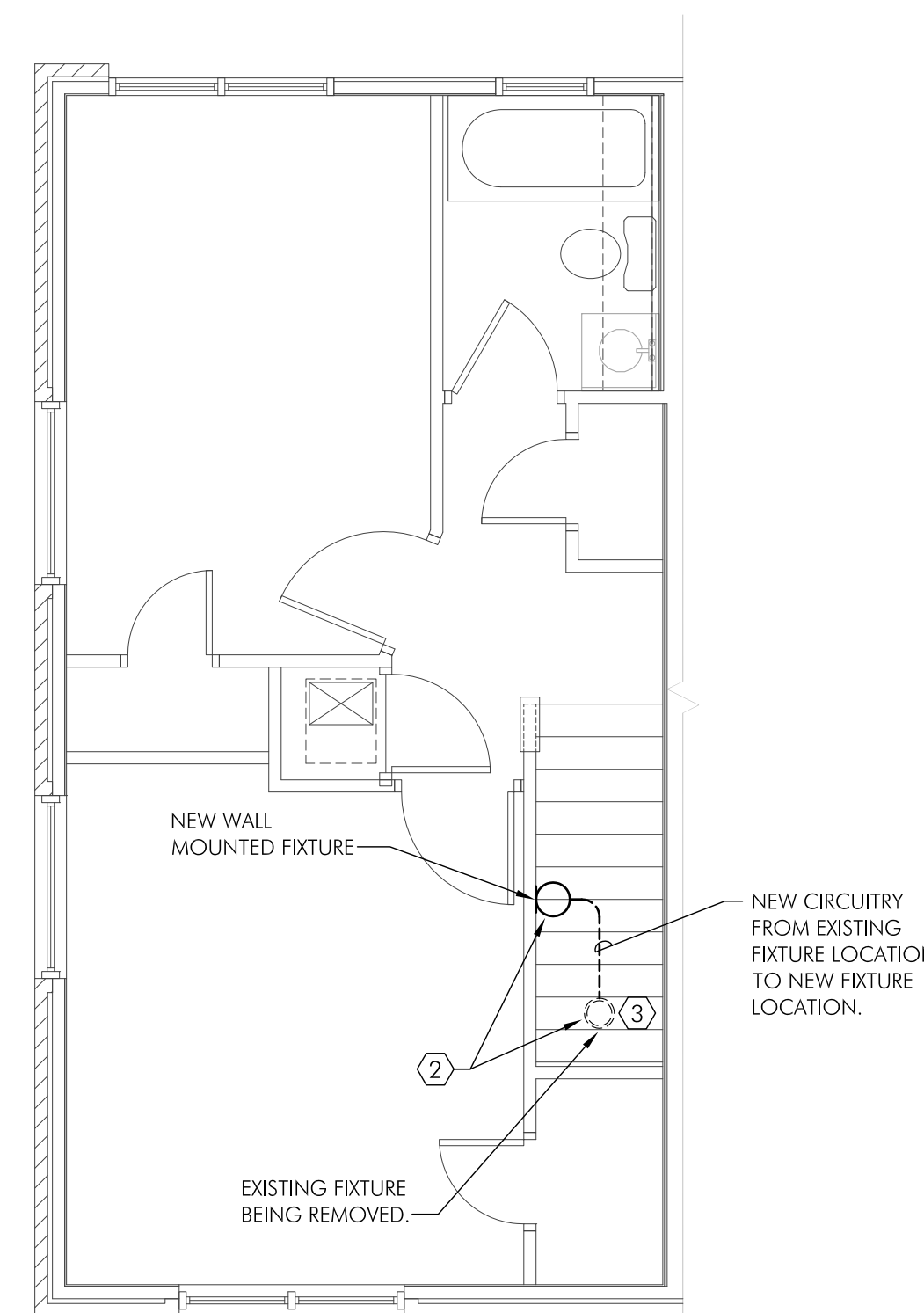


2 SECOND FLOOR PLAN - LIGHTING - BUILDINGS E, F & G
SCALE: 1/4" = 1'-0" 3BR - UNIT TYPE 4



NOTE:
NO ELECTRICAL WORK REQUIRED AT FIRST FLOOR, SHOWN FOR REFERENCE ONLY.

1 FIRST FLOOR PLAN - LIGHTING - BUILDINGS B, C & D
SCALE: 1/4" = 1'-0"



2 SECOND FLOOR PLAN - LIGHTING - BUILDINGS B, C & D
SCALE: 1/4" = 1'-0"

- GENERAL NOTES**
- THIS DRAWING IS GENERALLY DIAGRAMMATIC IN NATURE AND EXCEPT WHERE SPECIFICALLY DIMENSIONED OR DETAILED, INDICATES THE GENERAL ARRANGEMENT OF THE WORK. THE CONTRACTOR SHALL INSTALL HIS WORK TO CONFORM AS NEARLY AS POSSIBLE TO THE LOCATIONS AND ARRANGEMENTS SHOWN, WITH ONLY SUCH MINOR ADJUSTMENTS AS NECESSARY. CONTRACTOR SHALL COORDINATE THE WORK WITH ALL OTHER TRADES TO AVOID INTERFERENCES.
 - ALL ELECTRICAL COMPONENTS EXTENDED THROUGH A FIRE RATED STRUCTURE SHALL BE PROTECTED OR SEALED AS REQUIRED TO MAINTAIN RATING OF THE STRUCTURE.
 - MAINTAIN CODE REQUIRED CLEARANCES AT ALL ELECTRICAL PANELS AND DISCONNECT SWITCHES. THERE SHALL BE NO EQUIPMENT, PIPING OR DUCT WORK INSTALLED IN OR ABOVE THE WORKING CLEARANCES.

- KEY NOTES**
- EXISTING CEILING MOUNTED LIGHT FIXTURE TO BE REPLACED WITH NEW LIGHT FIXTURE IN THE SAME LOCATION. MAINTAIN EXISTING CIRCUITRY AND CONTROLS.
 - EXISTING CEILING MOUNTED LIGHT FIXTURE TO BE REMOVED AND REPLACED WITH NEW WALL MOUNTED LIGHT FIXTURE MIDWAY BETWEEN THE FIRST AND SECOND FLOORS. CONTRACTOR SHALL EXTEND EXISTING CIRCUITRY AND SWITCH LEG TO NEW FIXTURE LOCATION AS REQUIRED USING WIREMOLD SURFACE MOUNTED NON-METALLIC RACEWAY SYSTEM. PROVIDE NEW COVER PLATE AT EXISTING FIXTURE JUNCTION BOX AND PAINT ALL SURFACE MOUNTED RACEWAY TO MATCH WALL/CEILING SURFACE. CONTRACTOR SHALL PROVIDE UNIT PRICE FOR THIS SCOPE OF WORK IN ACCORDANCE WITH SPECIFICATIONS.
 - AS PART OF A DEDUCTIVE ALTERNATE, THE EXISTING FIXTURE AT THIS LOCATION SHALL BE REPLACED WITH A NEW LIGHT FIXTURE IN THE SAME LOCATION, IN LIEU OF PROVIDING A NEW WALL MOUNTED FIXTURE AS DESCRIBED IN KEY-NOTE NUMBER 2. NEW FIXTURE SHALL BE EQUAL TO SEA GULL LIGHTING MODEL NUMBER 7926EN3-15 OR EQUAL. MAINTAIN EXISTING CIRCUITRY AND CONTROLS.

- LEGEND**
- NEW SURFACE MOUNTED RACEWAY, SEE PLANS FOR ADDITIONAL INFORMATION.
 - NEW TWO LIGHT CEILING FLUSH MOUNTED LIGHTING FIXTURE WITH TWO (2) A19 LED LAMPS AND WHITE SHATTER RESISTANT ACRYLIC DIFFUSER. USE SEA GULL LIGHTING MODEL NUMBER 7926EN3-15 OR EQUAL.
 - NEW ONE LIGHT ADA COMPLIANT WALL MOUNTED LIGHTING FIXTURE WITH ONE (1) A19 LED LAMP AND WHITE ACRYLIC DIFFUSER. USE SEA GULL LIGHTING MODEL NUMBER 4938EG-15 OR EQUAL.

DIA.
Design Innovation
ARCHITECTS + INTERIORS + PLANNING
402 S. Gay Street, Suite 201, Knoxville, TN 37902
ph: 865.637.8940 or 865.291.2221 fx: 865.544.3640
www.dia-arch.com



ICT
I. C. Thomasson
Associates, Inc.
1114 Clinch Ave., Suite 200
Knoxville, TN 37916
(865) 525-3488
ICT JOB No. 180484

A RENOVATION TO:
MONTGOMERY VILLAGE
4530 JOE LEWIS ROAD
KNOXVILLE, TENNESSEE 37920

DATE	ISSUE FOR

This drawing is the property of DESIGN INNOVATIONS ARCHITECTS, INC. and is not to be reproduced or copied in whole or in part without authorization from DESIGN INNOVATIONS ARCHITECTS, INC. It is to be used for the project and site specifically identified herein and is not to be used for any other project. It is to be returned upon request. Do not scale drawings, within dimensions take precedence. All drawings and designs shown on these drawings are copyright © of DESIGN INNOVATIONS ARCHITECTS, INC.

Sheet Title
**BUILDINGS B, C, D,
E, F, AND G
UNIT PLANS -
LIGHTING**

Project Number
18110

Date
10-08-18

Sheet Number
E-101

