

1. EXISTING CONCRETE SIDEWALK WILL BE SAW CUT AT NEAREST CONTROL JOINT AND REPLACED WITH A FULL-DEPTH SIDEWALK SECTION.



1. EXISTING ASPHALT WILL BE SAW CUT AND REPLACED WITH A FULL-DEPTH ASPHALT PAVEMENT SECTION. A TWO YEAR PERFORMANCE BOND AND A THREE YEAR MAINTENANCE BOND WILL BE REQUIRED FOR ASPHALT PAVEMENT SECTION TRENCH REPAIR AREAS.



SEEDING DATES	GRASS SEED	PERCENTAGES
JANUARY 1 TO MAY 1	ITALIAN RYE	50%
	SUMMER OATS	50%
MAY 1 TO JULY 15	SUDAN-SORGHUM	100%
MAY 1 TO JULY 15	STARR MILLET	100%
JULY 15 TO JANUARY 1	BALBOA RYE	67%
	ITALIAN RYE	33%

EXPANSION RESTRAINT
(1/4" NYLON ROPE,
2" FLAT WASHERS)

DUMP STRAPS
2 EACH

A detailed perspective diagram of the Bag Removal Form assembly. The assembly consists of a rectangular frame with a grid of 1" square openings. A "DUMP STRAP" is shown as a flexible, ribbed strip that is inserted into the "1\" REBAR FOR BAG REMOVAL FORM INLET" on one side of the frame. The other end of the strap is shown exiting the opposite side of the frame. A "SEDIMENT SACK" is shown as a large, flexible bag that is placed inside the frame, with its top edge resting on the grid. The diagram is labeled with "DUMP STRAP", "1\" REBAR FOR BAG REMOVAL FORM INLET", and "SEDIMENT SACK".

NOTES:
1. BAGS SHOULD BE CLEANED OUT AFTER EVERY RAIN EVENT AND/OR AS NEEDED.

NOT TO SCALE

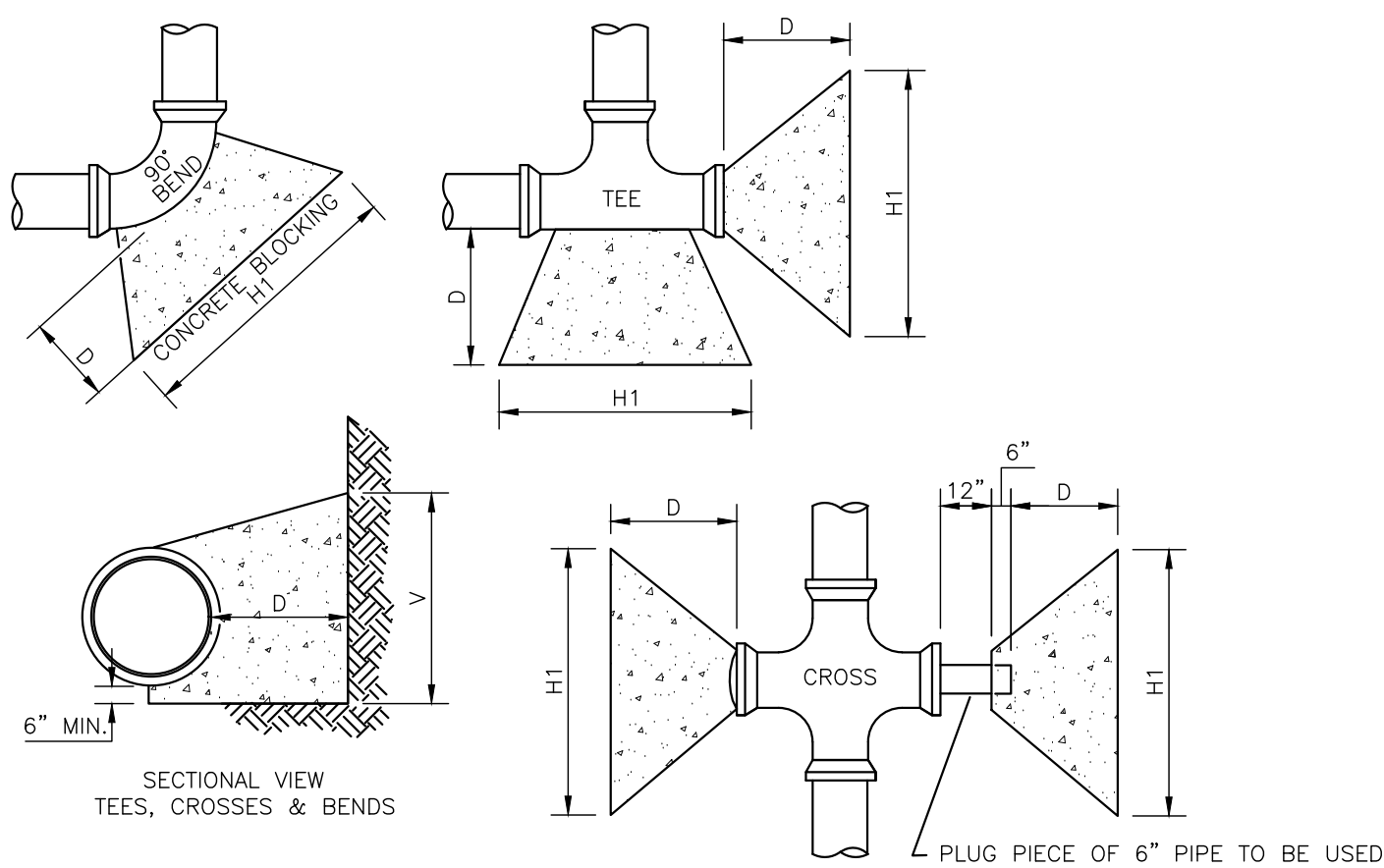
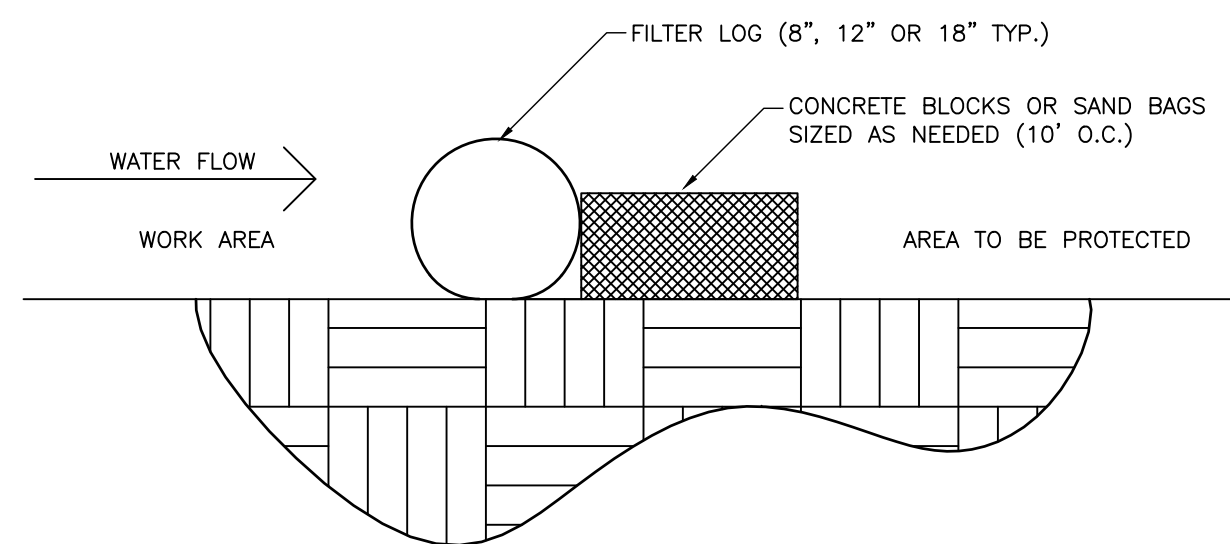


TABLE IS BASED ON 225 P.S.I. OR 150 P.S.I. WORKING PRESSURE PLUS 50% WATER HAMMER.

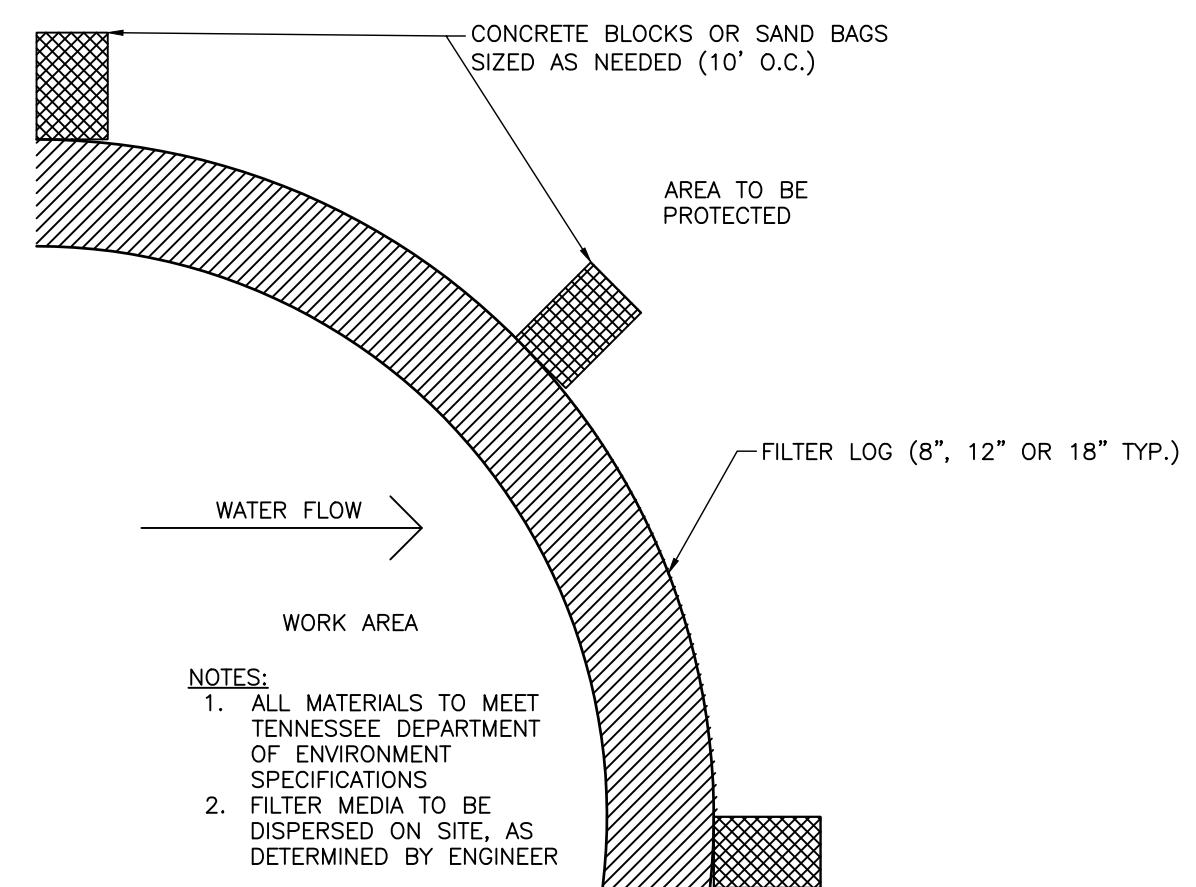
NOTE:

1. CONCRETE USED FOR BLOCKING SHALL BE 3,500#/SQ. IN.
2. EARTH PRESSURES ARE FIGURED AT 4,000# PER SQ. FT. BEARING AREA OF KICKERS SHALL BE INCREASED WHEN POURED AGAINST SAND, LOOSE FILL, WET EARTH, CINDERS, ECT.

NOT TO SCALE



SECTION
NOT TO SCALE



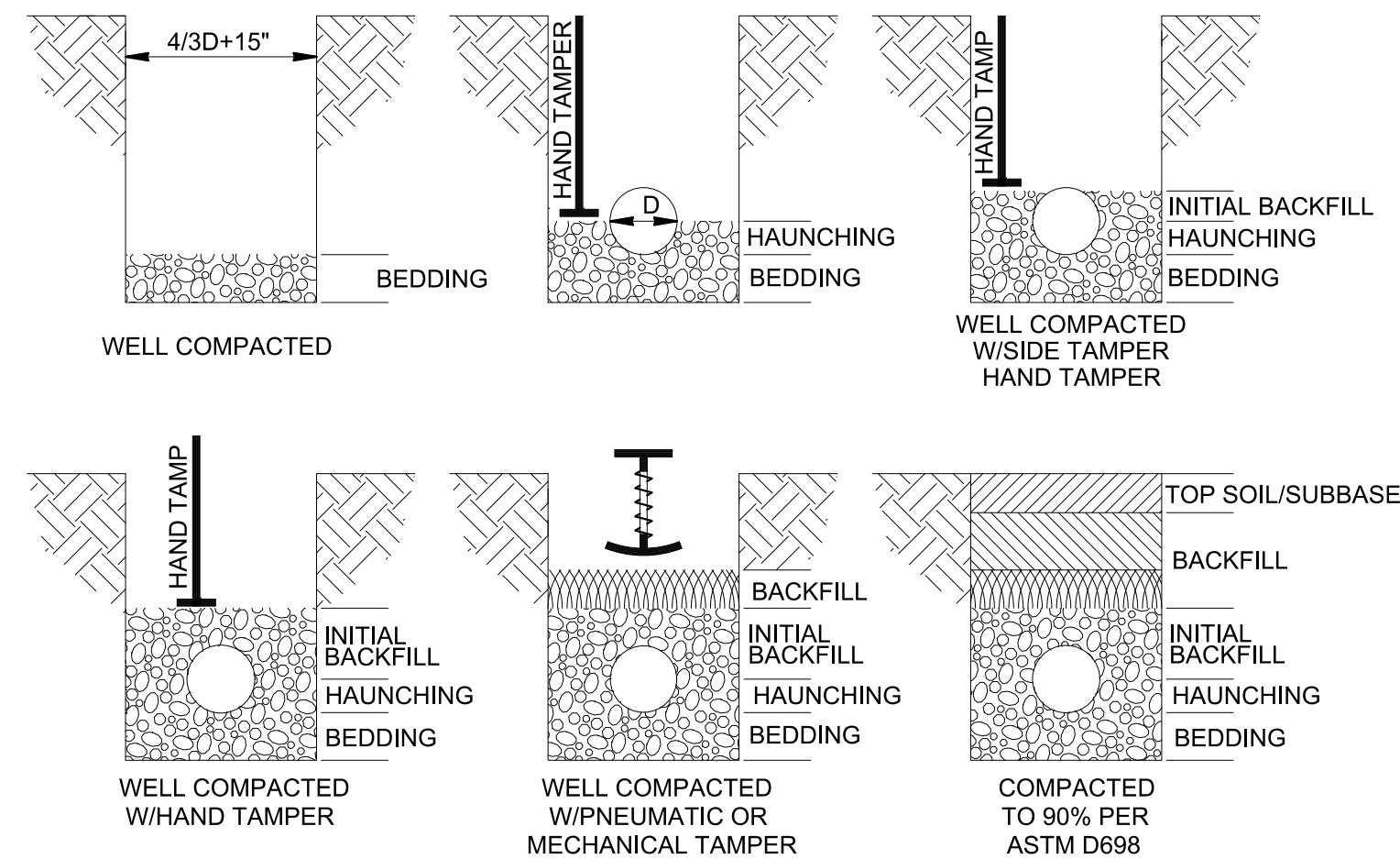
NOTES:

1. ALL MATERIALS TO MEET TENNESSEE DEPARTMENT OF ENVIRONMENT SPECIFICATIONS
2. FILTER MEDIA TO BE DISPERSED ON SITE, AS DETERMINED BY ENGINEER

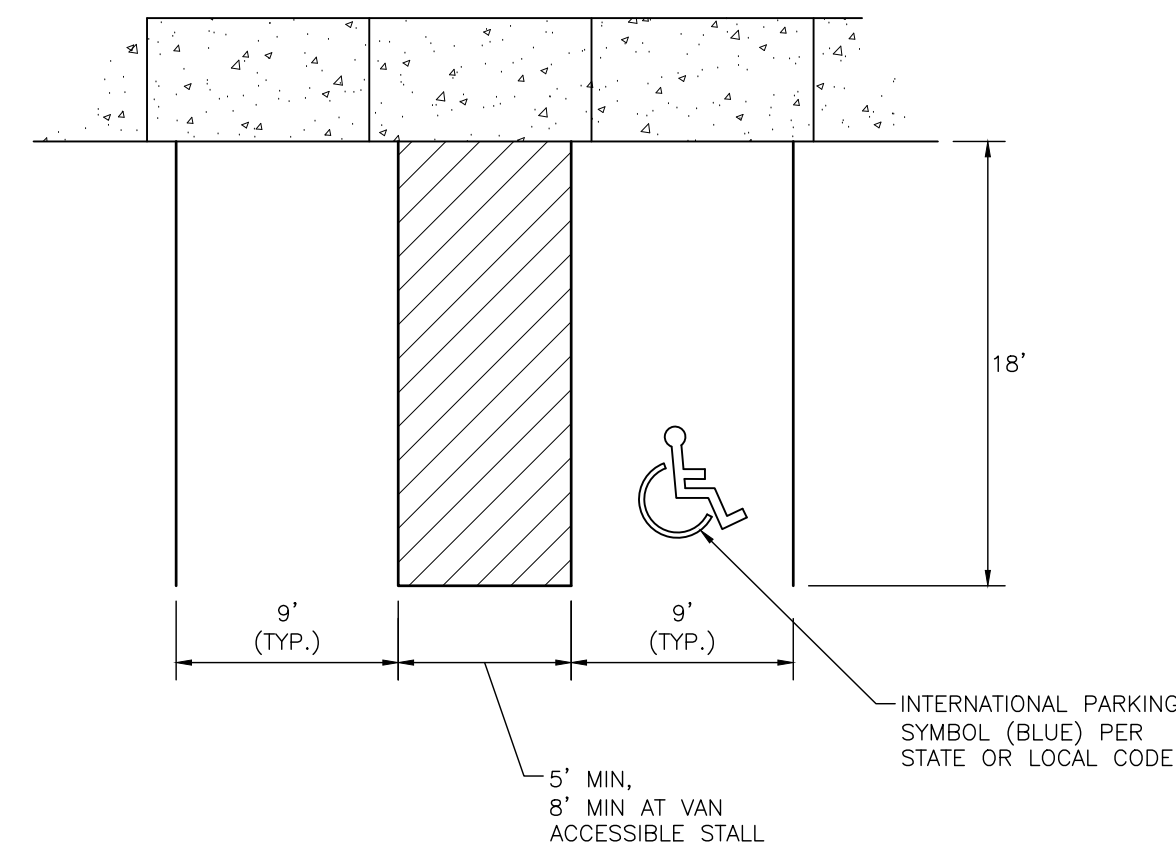
PLAN

NOT TO SCALE

NOT TO SCALE



LAYER	DEPTH	MATERIAL
BEDDING	6" MIN.	CLASS I FOR FLEXIBLE PIPE, CLASS I-IV FOR RIGID PIPE
HAUNCHING	VARIES	CLASS I FOR FLEXIBLE PIPE, CLASS I-IV FOR RIGID PIPE, TAMPED IN 6" MAXIMUM LAYERS.
INITIAL BACKFILL	VARIES	CLASS I FOR FLEXIBLE PIPE, CLASS I-IV FOR RIGID PIPE
BACKFILL	VARIES	CLASS I-IV FOR ALL PIPE, 75% OF BACKFILL MATERIAL MAY CONTAIN BROKEN STONES NOT EXCEEDING 6" IN DIAMETER- TAMPED IN 12" MAXIMUM LAYERS
TOP SOIL (UNIMPROVED AREAS)	6"	CLASS III OR IV FOR ALL PIPE, FREE OF LARGE CLODS, VEGETABLE MATTER, DEBRIS STONE AND/OR ANY OTHER OBJECTIONABLE MATTER
SUBBASE (IMPROVED AREAS)	12"	CLASS I-IV FOR ALL PIPE - EXCEPT USE T.D.O.T. MINERAL AGGREGATE BASE TYPE A, ACROSS OR ALONG EXISTING PAVEMENT



NOTES:

1. PAINT WHITE 4" WIDE PARKING STRIPES, USING PAVEMENT MARKING MACHINE.
2. DRIVE LANE BEHIND STALLS MUST BE A MINIMUM OF 26'

NOT TO SCALE



**Civil & Environmental
Consultants, Inc.**

2704 CHEROKEE FARM WAY - KNOXVILLE, TN 3792
PH:865-977-9997 · FAX:865-977-9919



DIA
Design Innovation
ARCHITECTS + INTERIORS + PLANNING

402 S. Gay Street, Suite 201, Knoxville, TN 37902
 Phone 865.637.8540 or 865.291.2221 fax 865.544.3840
www.dia-arch.com

[illegible]

This drawing is the property of DESIGN INNOVATIONS ARCHITECTS, INC. and is not to be reproduced or copied in whole or in part without authorization from DESIGN INNOVATIONS ARCHITECTS, INC.. It is to be used for the project and site specifically identified herein and is not to be used on any other project. It is to be returned upon request. Do not scale drawings, written dimensions take precedence. All drawings and designs shown on these drawings are copyright. © of DESIGN INNOVATIONS ARCHITECTS, INC.

Sheet Title

CIVIL/SITE DETAILS

Project Number	18110
----------------	-------

Date
10-15-2018

Sheet Number

C-800