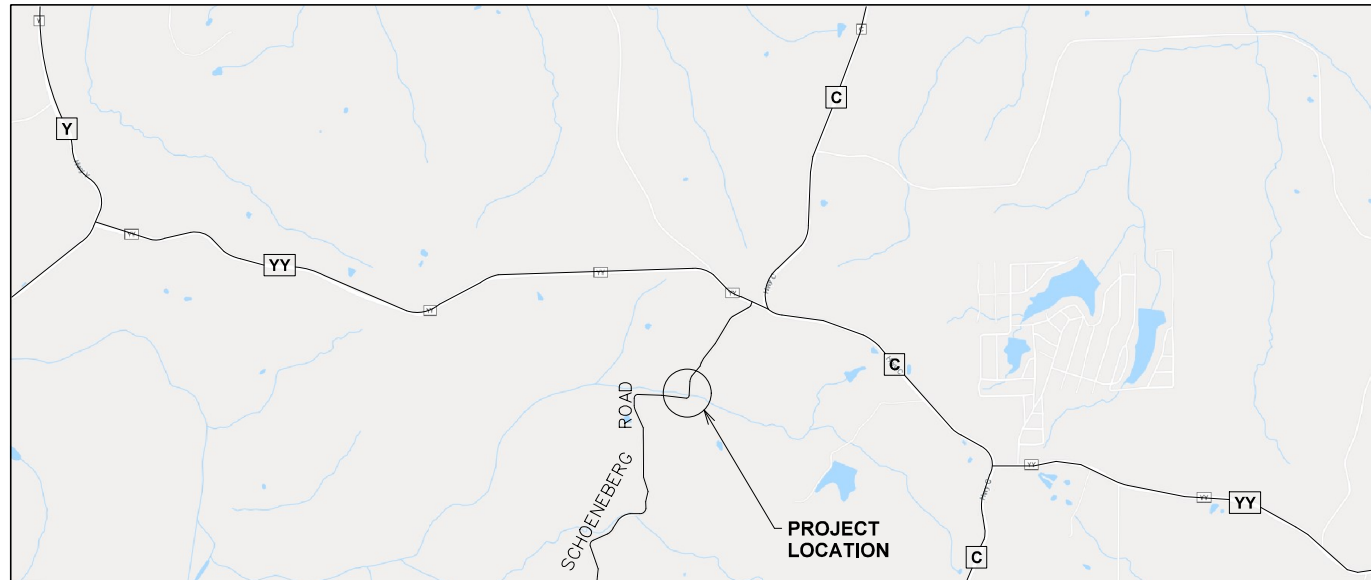


# FRANKLIN COUNTY MISSOURI

## SCHOENEBERG ROAD BRIDGE REHABILITATION

### CONSTRUCTION PLANS



VICINITY MAP  
NOT TO SCALE

SECTION 34, TOWNSHIP 44 NORTH, RANGE 3 WEST

PREPARED AUGUST 21, 2019

#### GRAPHIC / SYMBOL LEGEND (USED IN PLANS)

DESCRIPTION	EXISTING	NEW
RIGHT-OF-WAY		
PROPERTY LINE		
PERMANENT DRAINAGE EASEMENT		
TEMPORARY CONSTRUCTION EASEMENT		
UTILITY POLE (TYPE SPECIFIED)		
UNDERGROUND CONDUIT OR CABLE (TYPE SPECIFIED)		
T-TELEPHONE P-POWER TV-TELEVISION		
OVERHEAD UTILITY LINE (TYPE SPECIFIED)		
T-TELEPHONE OH-POWER W-WATER		
LIGHT STANDARD		
TRAFFIC PULL BOX		
GAS LINE		
GAS VALVE		
WATER LINE		
WATER SERVICE VALVE		
WATER METER		
FIRE HYDRANT		
SANITARY SEWER		
STORM SEWER		
SEWER MANHOLE		
GRATED INLET		
CURB INLET/ AREA INLET		
CURB INLET (MULTIPLE UNIT)		
IDENT. OF NEW OR MOD. SANITARY STRUCTURE		
IDENT. OF NEW OR MOD. STORM STRUCTURE		
PIPE WITH HEADWALLS		
DRAINAGE V-DITCH (SODDED)		
DRAINAGE FLAT BOTTOM DITCH (SODDED)		
DRAINAGE V-DITCH (PAVED)		
DRAINAGE FLAT BOTTOM DITCH (PAVED)		
CONSTRUCTION LIMITS		
CONCRETE PAVEMENT		
ASPHALTIC CONCRETE PAVEMENT		
PAVEMENT REMOVAL		
TREE OR SHRUB		
HEDGE		
FENCE		
SIGN		
BUILDING		
MAILBOX (MB)		
TO BE REMOVED	(TBR)	(TBR)
TO BE ABANDONED	(TBA)	(TBA)
USE IN PLACE	(UIP)	(UIP)
TO BE REMOVED AND REPLACED	(TBR&R)	(TBR&R)
ADJUST TO GRADE	(ATG)	(ATG)
TO BE REMOVED AND REPLACED BY OTHERS	(TBR&RBO)	(TBR&RBO)
TO BE ABANDONED AND FILLED	(TBA&F)	(TBA&F)
ADJUST TO GRADE BY OTHERS	(ATGBO)	(ATGBO)
CUT CROSS	CROSS	CROSS
FOUND CROSS	OCR	OCR
FOUND IRON PIPE	OIP	OIP
FOUND IRON ROD	OIR	OIR
FOUND STONE	OST	OST
SET P.K. NAIL	PK	PK
SET IRON PIPE	SIP	SIP
DO NOT DISTURB	(DND)	(DND)
MANHOLE	MH	MH
REFERENCE POINT	△	△

#### UTILITY CONTACTS

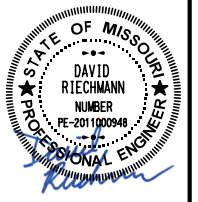
FIDELITY COMMUNICATIONS  
ROGER HALMICK  
113 CIRCLE DRIVE  
NEW HAVEN, MISSOURI 63068  
OFFICE: (573) 468-1082

#### SPECIAL NOTE TO CONTRACTOR(S):

EXISTING UNDERGROUND AND ABOVE-GRADE FACILITIES, STRUCTURES, AND UTILITIES HAVE BEEN PLOTTED ON THESE CONTRACT DOCUMENTS BASED ON THE INFORMATION AND SURVEYS AVAILABLE AT THE TIME OF DRAWING PREPARATION. THE LOCATIONS OF THESE FEATURES MUST, THEREFORE, BE CONSIDERED APPROXIMATE ONLY. IN ADDITION, THERE MAY BE OTHER FACILITIES, STRUCTURES, AND UTILITIES WHICH DID NOT EXIST (OR THE EXISTENCE OF WHICH WAS NOT KNOWN) AT THE TIME OF DRAWING PREPARATION. IT IS THE SOLE RESPONSIBILITY OF THE CONTRACTOR(S) TO HAVE ALL EXISTING FACILITIES, STRUCTURES, AND UTILITIES LOCATED IN THE FIELD PRIOR TO ANY EXCAVATION OR CONSTRUCTION ACTIVITY; AND TO PROTECT ALL SUCH FEATURES (EXCEPT THOSE SPECIFICALLY NOTED FOR REMOVAL OR DEMOLITION) DURING CONSTRUCTION.

#### INDEX OF SHEETS

DESCRIPTION	SHEET
COVER SHEET	1
TYPICAL SECTIONS & NOTES	2
SUMMARY OF QUANTITIES	2A
SCHEDULE OF QUANTITIES	2B
PLAN SHEET	3
REFERENCE POINTS AND COORDINATE POINTS	4
<b>BRIDGE DRAWINGS</b>	
GENERAL PLAN AND ELEVATION	B1
GENERAL NOTES	B2
DEMOLITION PLANS	B3
END BENT REPAIRS	B4
SLAB DETAILS	B5
DETAILS OF KNEE WALL BARRIER CURB	B6
BILL OF REINFORCING STEEL	B7



DATE PREPARED 08/21/19	
ROUTE	STATE MO
DISTRICT	SHEET NO. 1
COUNTY FRANKLIN	
JOB NO.	
CONTRACT ID.	
PROJECT NO. 1815510	
BRIDGE NO.	

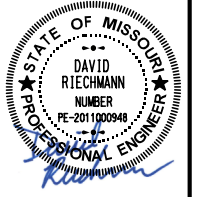
DATE	DESCRIPTION



**HORNER SHIFRIN**  
THE POWER HOUSE AT UNION STATION  
407 S. 18th St., Ste. 400  
ST. LOUIS, MO 63103-2296  
314-531-4321 FAX: 314-531-6966  
www.HornerShifrin.com  
Certificate of Authority: 000196  
Expiration Date: December 31, 2019

COVER SHEET  
**SCHOENEBERG ROAD  
BRIDGE REHABILITATION**  
FRANKLIN COUNTY, MISSOURI

LENGTH OF PROJECT:	
BEGINNING STATION	11+40.49
ENDING STATION	11+88.83
APPARENT LENGTH	48.34 FEET
EQUATIONS AND EXCEPTIONS	
BRIDGE EXCEPTIONS	24.15 FEET
TOTAL CORRECTIONS	
NET LENGTH OF PROJECT	24.19 FEET



DATE PREPARED  
**08/21/19**

ROUTE STATE  
**MO**

DISTRICT SHEET NO.  
**2**

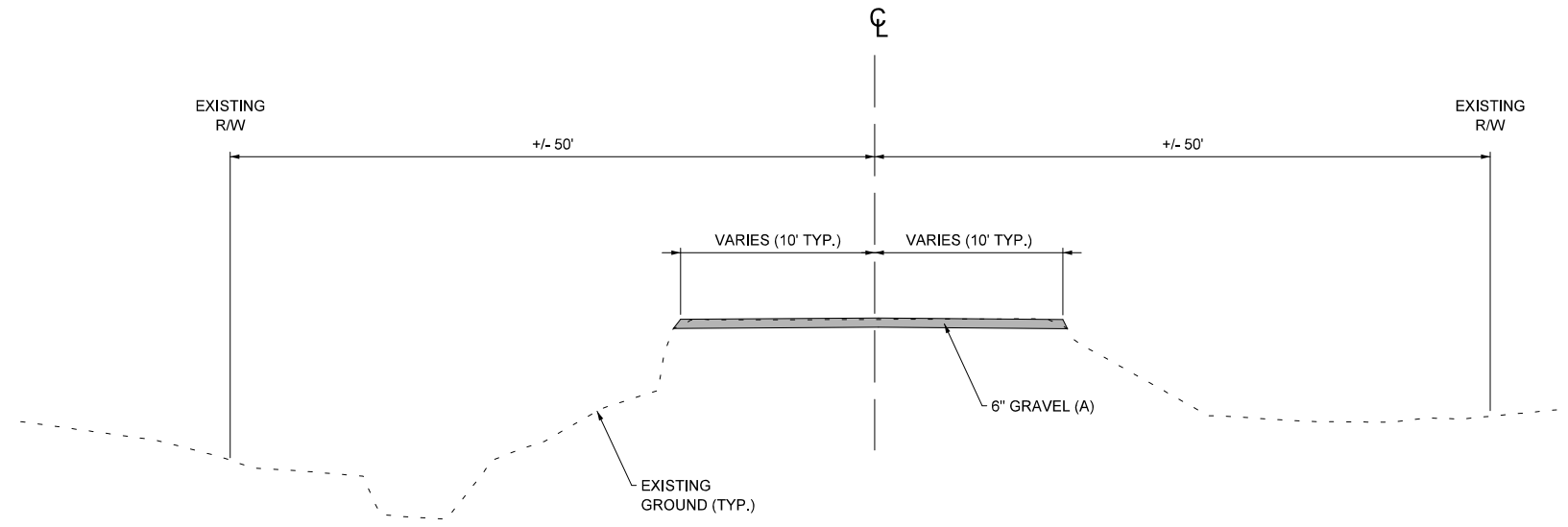
COUNTY  
**FRANKLIN**

JOB NO.  
.

CONTRACT ID.  
.

PROJECT NO.  
**1815510**

BRIDGE NO.  
.



**SCHOENEBERG ROAD**

STA. 11+40.49 TO STA. 11+47.78

STA. 11+71.93 TO STA. 11+88.83

BRIDGE STA. 11+47.78 TO STA. 11+71.93

DESCRIPTION	DATE



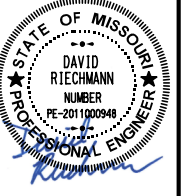
**HORNER SHIFRIN**

THE POWER HOUSE AT UNION STATION  
401 S. 18th St., Ste. 400  
ST. LOUIS, MO 63103-2296  
314-531-4321 FAX: 314-531-6966  
www.HornerShifrin.com  
Certificate of Authority: 000199  
Expiration Date: December 31, 2019

**TYPICAL SECTIONS & NOTES**

**SCHOENEBERG ROAD**  
**BRIDGE REHABILITATION**  
FRANKLIN COUNTY, MISSOURI

- NOTES:
1. CONTRACTOR TO NOTIFY AND COORDINATE WITH UTILITY COMPANIES TWO WEEKS PRIOR TO COMMENCEMENT OF PROJECT.
  2. CONTRACTOR TO MAINTAIN ACCESS TO DRIVEWAYS FOR PROPERTY OWNERS AT ALL TIMES.
  3. CONTRACTOR SHALL PROVIDE EROSION CONTROL PLAN TO FRANKLIN COUNTY 10 DAYS PRIOR TO CONSTRUCTION FOR REVIEW AND APPROVAL.



SUMMARY OF QUANTITIES			
ITEM NUMBER	ITEM DESCRIPTION	UNIT	QUANTITY
<b>ROADWAY ITEMS:</b>			
2019901	CLEARING AND GRUBBING	LS	1
2022010	REMOVAL OF IMPROVEMENTS	LS	1
2031000	CLASS A EXCAVATION	CY	10
3101003	GRAVEL (A) (6" THICK)	SY	60
6161047	TYPE III OBJECT MARKER	EA	6
6181000	MOBILIZATION	LS	1
6274000	CONTRACTOR FURNISHED SURVEYING AND STAKING	LS	1
8052000A	SEEDING - WARM SEASON MIXTURES	AC	0.2
8061019	SILT FENCE	LF	200
<b>BRIDGE ITEMS:</b>			
216-99.01	REMOVAL OF EXISTING SUPERSTRUCTURE	LS	1
703-42.08	CLASS B-2 CONCRETE (SUPERSTRUCTURE SOLID SLAB)	CY	20
703-99.03	KNEE WALL BARRIER CURB	LF	41
704-99.01	SUBSTRUCTURE REPAIRS	LS	1
707-10.00	CONDUIT SYSTEM ON STRUCTURE	LS	1
710-10.00	REINFORCING STEEL (EPOXY COATED)	LB	3010

DATE PREPARED 08/21/19	
ROUTE	STATE MO
DISTRICT	SHEET NO. 2A
COUNTY FRANKLIN	
JOB NO.	
CONTRACT ID.	
PROJECT NO. 1815510	
BRIDGE NO.	

DESCRIPTION	DATE



**HORNER SHIFRIN**  
 THE POWER HOUSE AT UNION STATION  
 401 S. 18th St., Ste. 400  
 ST. LOUIS, MO 63103-2296  
 314-531-4321 FAX: 314-531-6966  
 www.HornerShifrin.com  
 Certificate of Authority: 000196  
 Expiration Date: December 31, 2019

SUMMARY OF QUANTITIES  
**SCHOENEBERG ROAD**  
**BRIDGE REHABILITATION**  
 FRANKLIN COUNTY, MISSOURI

GRAVEL (A)				
PLAN SHEET	SIDE	LOCATION	6" GRAVEL (A) SY	REMARKS
3	BOTH	SCHOENEBERG ROAD	53.8	MAINLINE
TOTAL USE			53.8 60	

TEMPORARY EROSION CONTROL			
PLAN SHEET	LOCATION	SILT FENCE (LF)	REMARKS
4	SCHOENEBERG ROAD	200	
TOTALS USE		200 200	

TYPE III OBJECT MARKERS					
PLAN SHEET	LOCATION	OM1-3 (18" X 18") (EA)	OM3-1L (12" X 36") (EA)	OM3-1R (12" X 36") (EA)	REMARKS
4	SCHOENEBERG ROAD	1	3	2	
TOTALS USE		1 1	3 3	2 2	

<b>MOBILIZATION</b>
LUMP SUM = 1

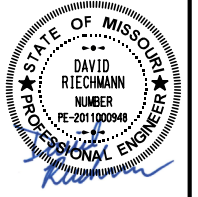
<b>CLEARING AND GRUBBING</b>
LUMP SUM = 1

<b>SEEDING - WARM SEASON MIXTURES</b>
AREA = 0.2 ACRES

<b>CONTRACTOR FURNISHED SURVEYING AND STAKING</b>
LUMP SUM = 1

<b>REMOVAL OF IMPROVEMENTS</b>
LUMP SUM = 1

EARTHWORK		
LOCATION	CLASS "A" EXCAVATION (CY)	REMARKS
SCHOENEBERG ROAD	10	
TOTAL USE	10 10	



DATE PREPARED  
**08/21/19**

ROUTE STATE  
DISTRICT SHEET NO.  
**MO**  
**2B**

COUNTY  
**FRANKLIN**

JOB NO.  
CONTRACT ID.  
PROJECT NO.  
**1815510**  
BRIDGE NO.

DATE	DESCRIPTION



**HORNER SHIFRIN**  
THE POWER HOUSE AT UNION STATION  
407 S. 18th St., Ste. 400  
ST. LOUIS, MO 63103-2296  
314-531-4521 FAX: 314-531-6966  
www.HornerShifrin.com  
Certificate of Authority: 000196  
Expiration Date: December 31, 2019

SCHEDULE OF QUANTITIES  
**SCHOENEBERG ROAD  
BRIDGE REHABILITATION**  
FRANKLIN COUNTY, MISSOURI



DATE PREPARED	08/21/19		
ROUTE	STATE	MO	
DISTRICT	SHEET NO.	3	
COUNTY	FRANKLIN		
JOB NO.			
CONTRACT ID.			
PROJECT NO.	1815510		
BRIDGE NO.			
DESCRIPTION			
DATE			



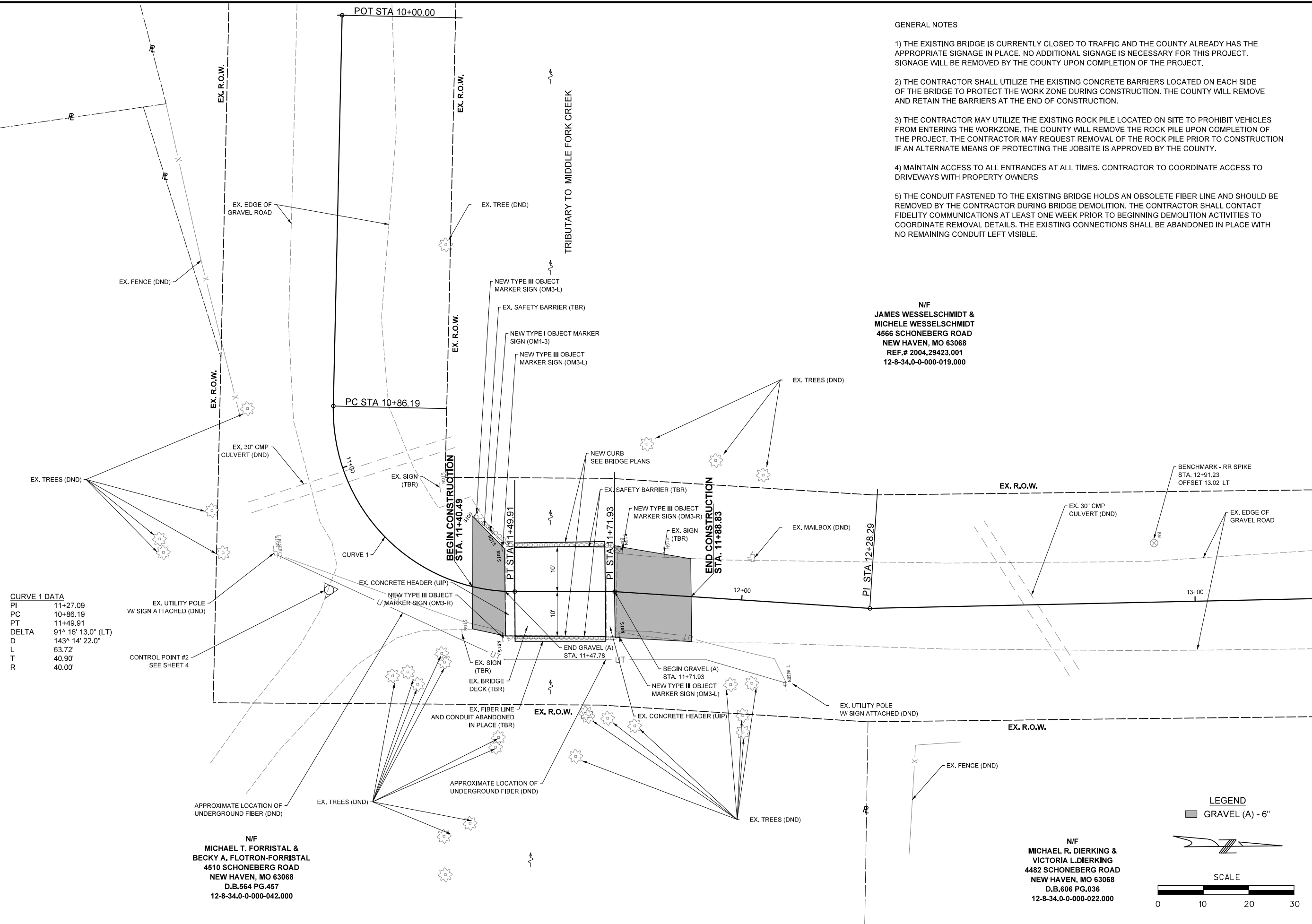
**HORNER SHIFRIN**  
 THE POWER HOUSE AT UNION STATION  
 401 S. 18th St., Ste. 400  
 ST. LOUIS, MO 63103-2296  
 314-531-4521 FAX: 314-531-6966  
 www.HornerShifrin.com  
 Certificate of Authority: 000196  
 Expiration Date: December 31, 2019

**PLAN SHEET**  
**SCHOENEGER ROAD**  
**BRIDGE REHABILITATION**  
 FRANKLIN COUNTY, MISSOURI

**GENERAL NOTES**

- 1) THE EXISTING BRIDGE IS CURRENTLY CLOSED TO TRAFFIC AND THE COUNTY ALREADY HAS THE APPROPRIATE SIGNAGE IN PLACE. NO ADDITIONAL SIGNAGE IS NECESSARY FOR THIS PROJECT. SIGNAGE WILL BE REMOVED BY THE COUNTY UPON COMPLETION OF THE PROJECT.
- 2) THE CONTRACTOR SHALL UTILIZE THE EXISTING CONCRETE BARRIERS LOCATED ON EACH SIDE OF THE BRIDGE TO PROTECT THE WORK ZONE DURING CONSTRUCTION. THE COUNTY WILL REMOVE AND RETAIN THE BARRIERS AT THE END OF CONSTRUCTION.
- 3) THE CONTRACTOR MAY UTILIZE THE EXISTING ROCK PILE LOCATED ON SITE TO PROHIBIT VEHICLES FROM ENTERING THE WORKZONE. THE COUNTY WILL REMOVE THE ROCK PILE UPON COMPLETION OF THE PROJECT. THE CONTRACTOR MAY REQUEST REMOVAL OF THE ROCK PILE PRIOR TO CONSTRUCTION IF AN ALTERNATE MEANS OF PROTECTING THE JOBSITE IS APPROVED BY THE COUNTY.
- 4) MAINTAIN ACCESS TO ALL ENTRANCES AT ALL TIMES. CONTRACTOR TO COORDINATE ACCESS TO DRIVEWAYS WITH PROPERTY OWNERS
- 5) THE CONDUIT FASTENED TO THE EXISTING BRIDGE HOLDS AN OBSOLETE FIBER LINE AND SHOULD BE REMOVED BY THE CONTRACTOR DURING BRIDGE DEMOLITION. THE CONTRACTOR SHALL CONTACT FIDELITY COMMUNICATIONS AT LEAST ONE WEEK PRIOR TO BEGINNING DEMOLITION ACTIVITIES TO COORDINATE REMOVAL DETAILS. THE EXISTING CONNECTIONS SHALL BE ABANDONED IN PLACE WITH NO REMAINING CONDUIT LEFT VISIBLE.

N/F  
**JAMES WESSELSCHMIDT & MICHELE WESSELSCHMIDT**  
 4566 SCHONEBERG ROAD  
 NEW HAVEN, MO 63068  
 REF.# 2004.29423.001  
 12-8-34.0-0-000-019.000

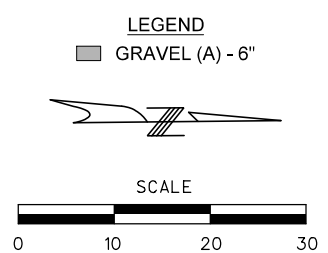


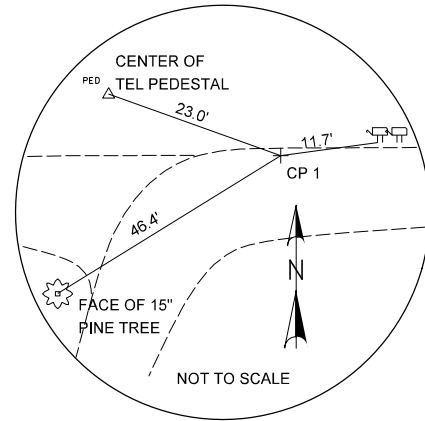
**CURVE 1 DATA**

PI	11+27.09
PC	10+86.19
PT	11+49.91
DELTA	91° 16' 13.0" (LT)
D	143' 14" 22.0"
L	63.72'
T	40.90'
R	40.00'

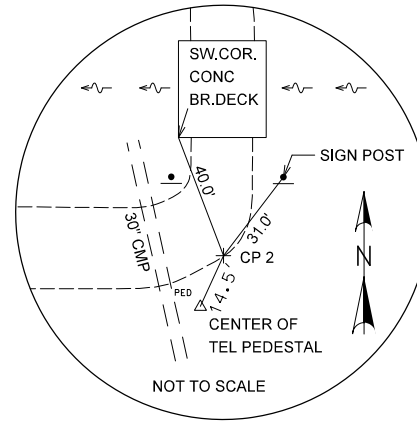
N/F  
**MICHAEL T. FORRISTAL & BECKY A. FLOTRON-FORRISTAL**  
 4510 SCHONEBERG ROAD  
 NEW HAVEN, MO 63068  
 D.B.564 PG.457  
 12-8-34.0-0-000-042.000

N/F  
**MICHAEL R. DIERKING & VICTORIA L. DIERKING**  
 4482 SCHONEBERG ROAD  
 NEW HAVEN, MO 63068  
 D.B.606 PG.036  
 12-8-34.0-0-000-022.000

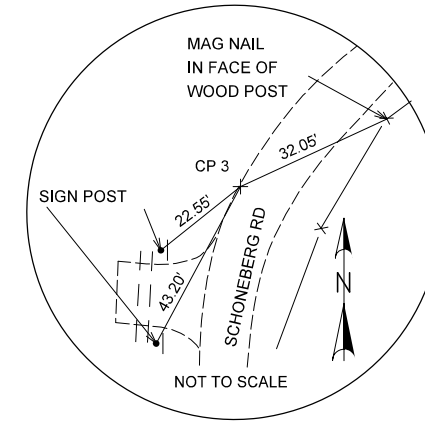




CONTROL POINT 1  
 N 975497.500  
 E 604070.274  
 EL 726.03  
 IRON PIN W/CAP SET



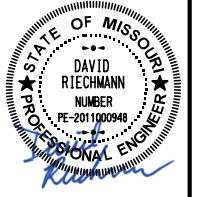
CONTROL POINT 2  
 N 975390.721  
 E 605040.130  
 EL 716.45  
 IRON PIN W/CAP SET  
 STA. 11+16.84



CONTROL POINT 3  
 N 975776.818  
 E 605075.678  
 EL 717.38  
 IRON PIN W/CAP SET

MISSOURI COORDINATE SYSTEM AND ELEVATION: NAD83 MISSOURI STATE PLANE, EAST ZONE, U.S. FOOT, NGVD

COORDINATE POINTS					
SHEET NO.	STATION	LOCATION	NORTHING (FEET)	EASTING (FEET)	DESCRIPTION
3	10+00.00	SCHOENEBERG ROAD	975405.22	604914.19	POT
3	10+86.19	SCHOENEBERG ROAD	975395.36	604999.82	PC
3	11+40.49	SCHOENEBERG ROAD	975422.21	605042.26	BEGIN PROJECT
3	11+49.91	SCHOENEBERG ROAD	975431.41	605044.22	PT
3	11+71.93	SCHOENEBERG ROAD	975453.33	605046.25	PI
3	11+88.83	SCHOENEBERG ROAD	975470.02	605048.91	END PROJECT
3	12+28.29	SCHOENEBERG ROAD	975508.99	605055.11	PI



DATE PREPARED  
**08/21/19**

ROUTE STATE  
 MO

DISTRICT SHEET NO.  
 4

COUNTY  
**FRANKLIN**

JOB NO.

CONTRACT ID.

PROJECT NO.  
**1815510**

BRIDGE NO.

DATE	DESCRIPTION



**HORNER SHIFRIN**

THE POWER HOUSE AT UNION STATION  
 407 S. 18th St., Ste. 400  
 ST. LOUIS, MO 63103-2296  
 314-531-4321 FAX: 314-531-6966  
 www.HornerShifrin.com  
 Certificate of Authority: 000196  
 Expiration Date: December 31, 2019

REFERENCE & COORDINATE POINTS  
**SCHOENEBERG ROAD BRIDGE REHABILITATION**  
 FRANKLIN COUNTY, MISSOURI