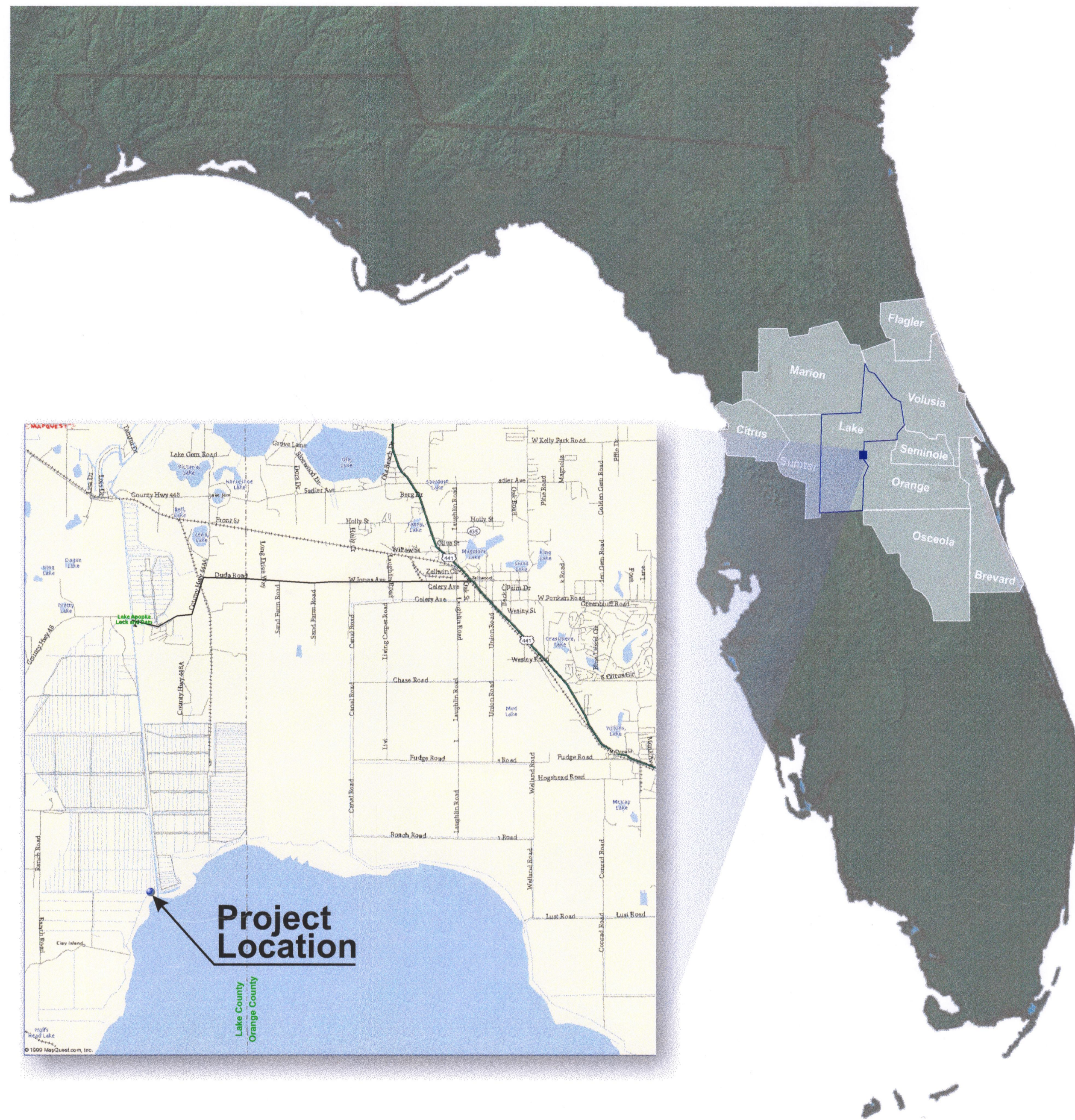


EXHIBIT 1



ST. JOHNS RIVER WATER MANAGEMENT DISTRICT

LAKE APOPKA FLOWWAY PUMP STATION

CONSTRUCTION OF PUMP NO. 4

TABLE OF CONTENTS

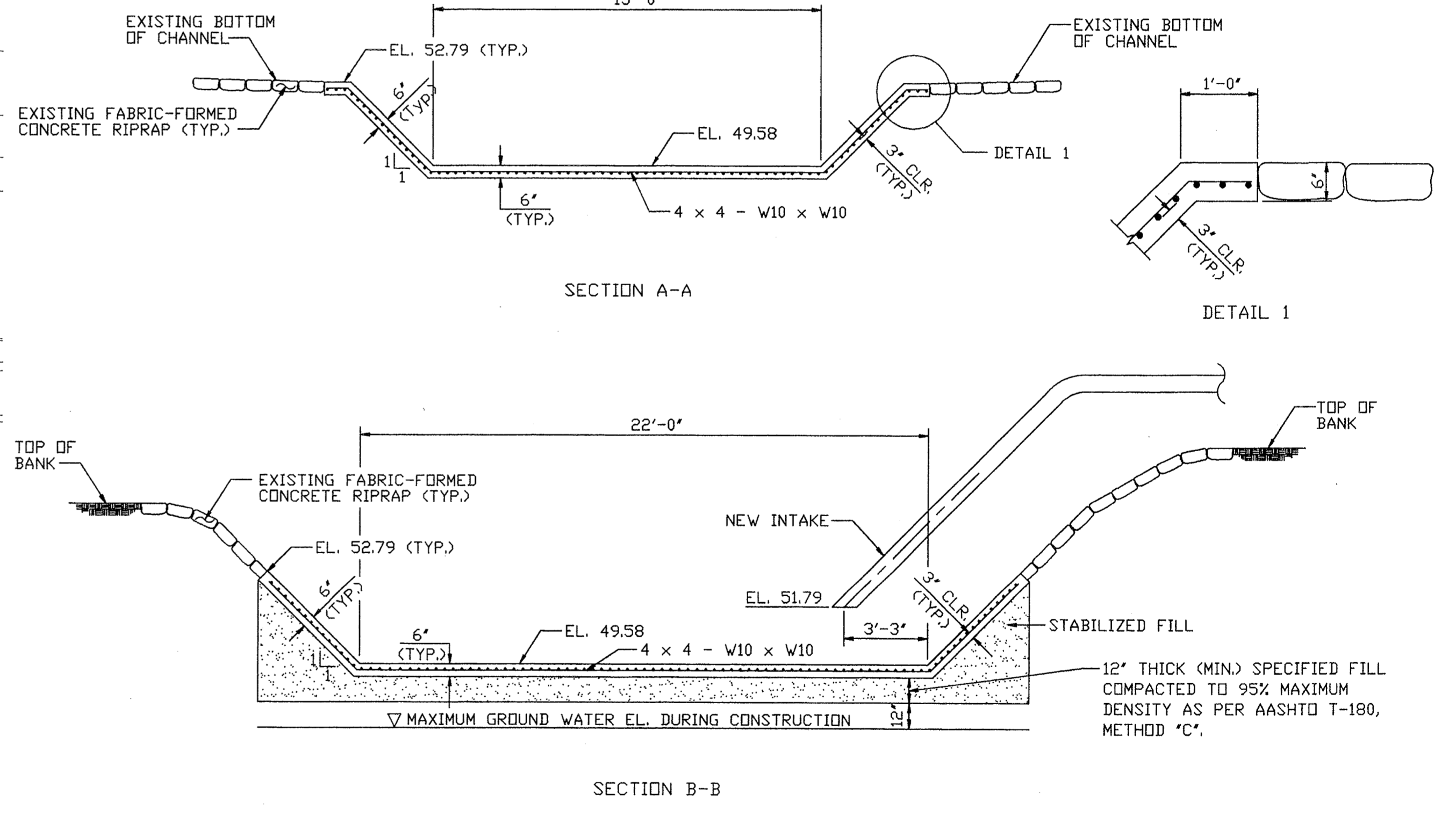
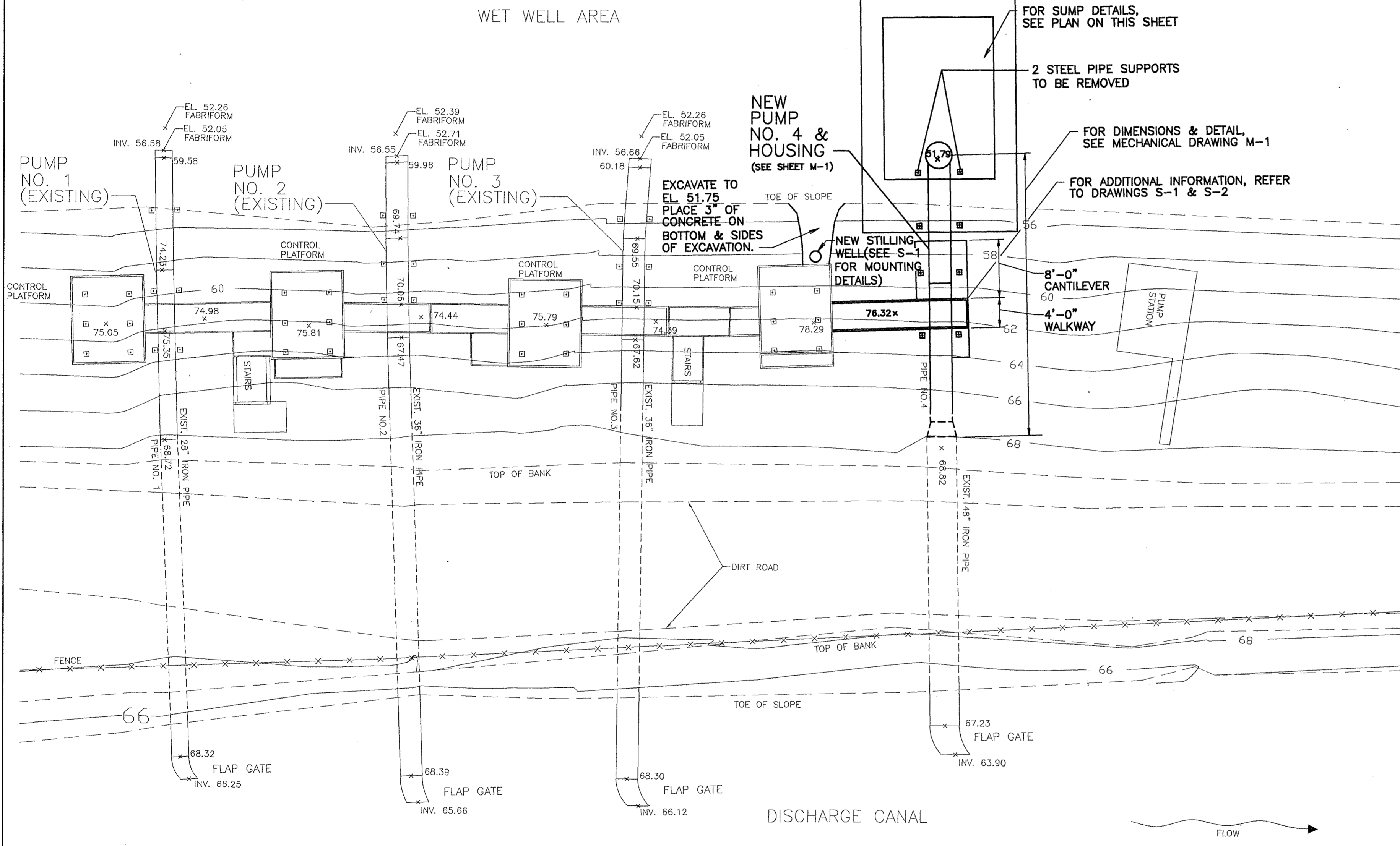
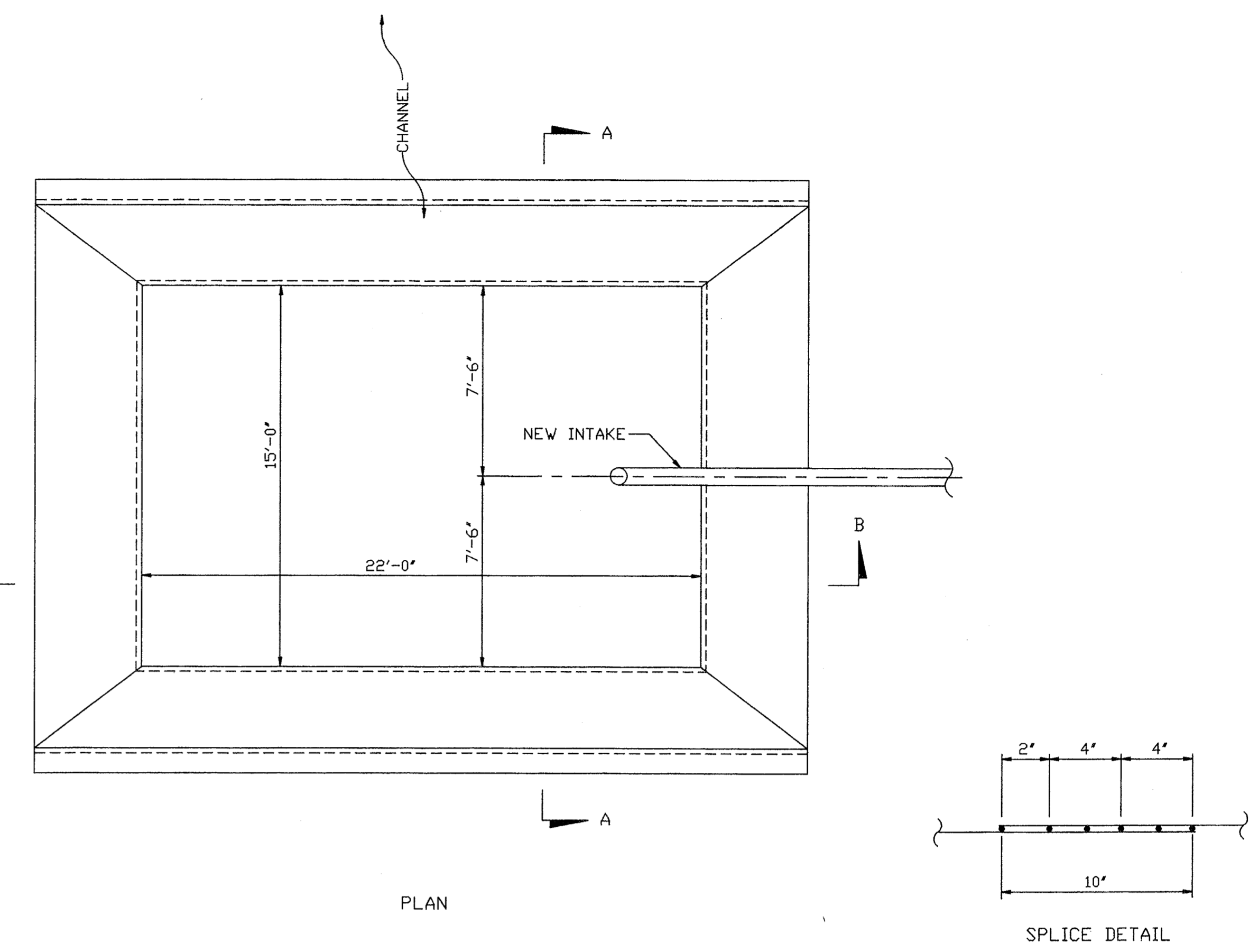
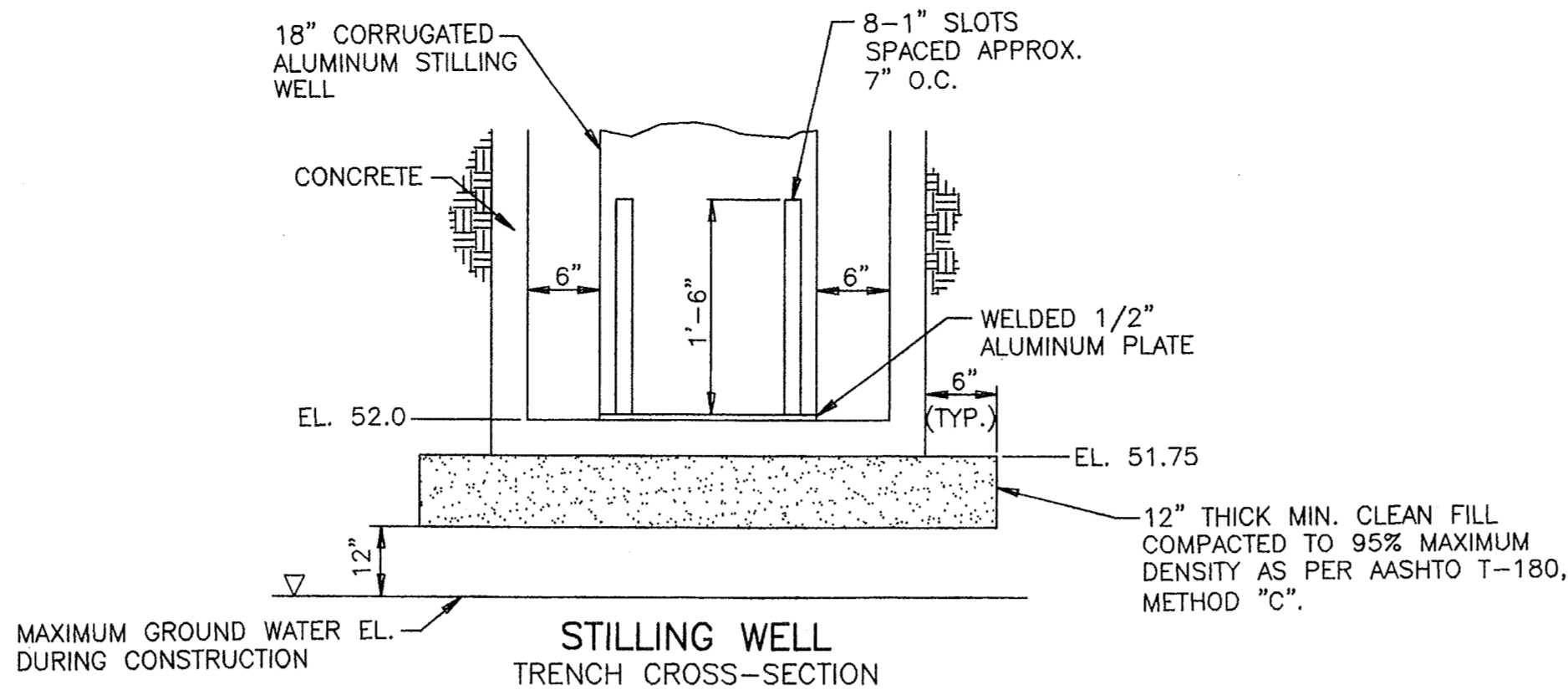
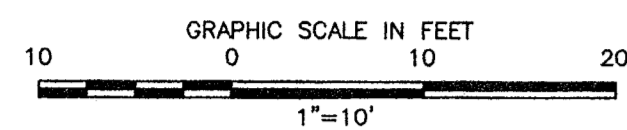
C-1	GENERAL NOTES
C-2	SITE PLAN & SUMP DETAILS
S-1	PUMP NO. 4 PLATFORM PLANS AND NOTES
S-2	PUMP NO. 4 PLATFORM SECTIONS AND DETAILS
M-1	PUMP NO. 4 ELEVATION
E-1	ELECTRICAL SITE PLAN
E-2	EXISTING CONTROL SYSTEM MODIFICATIONS
E-3	NEW PUMP NO. 4 CONTROL SYSTEM
E-4	MISC. ELECTRICAL DETAILS
E-5	EXISTING ELECTRICAL WIRING
E-6	PUMP NO. 4 SCHEMATIC CONTROL DIAGRAM

JUNE 24, 2002

Prepared By:

URS

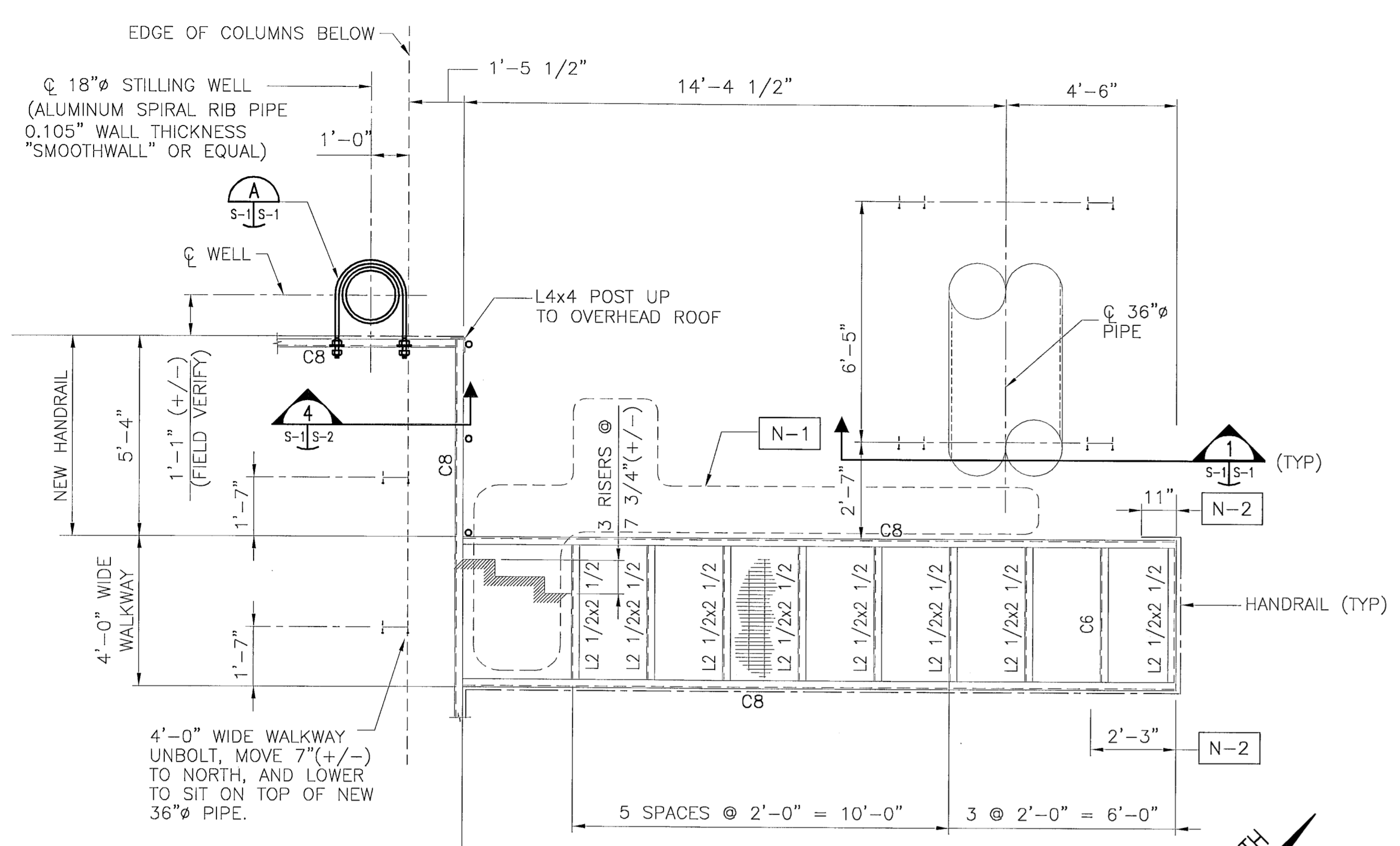
Richard P. ...
June 24, 2002



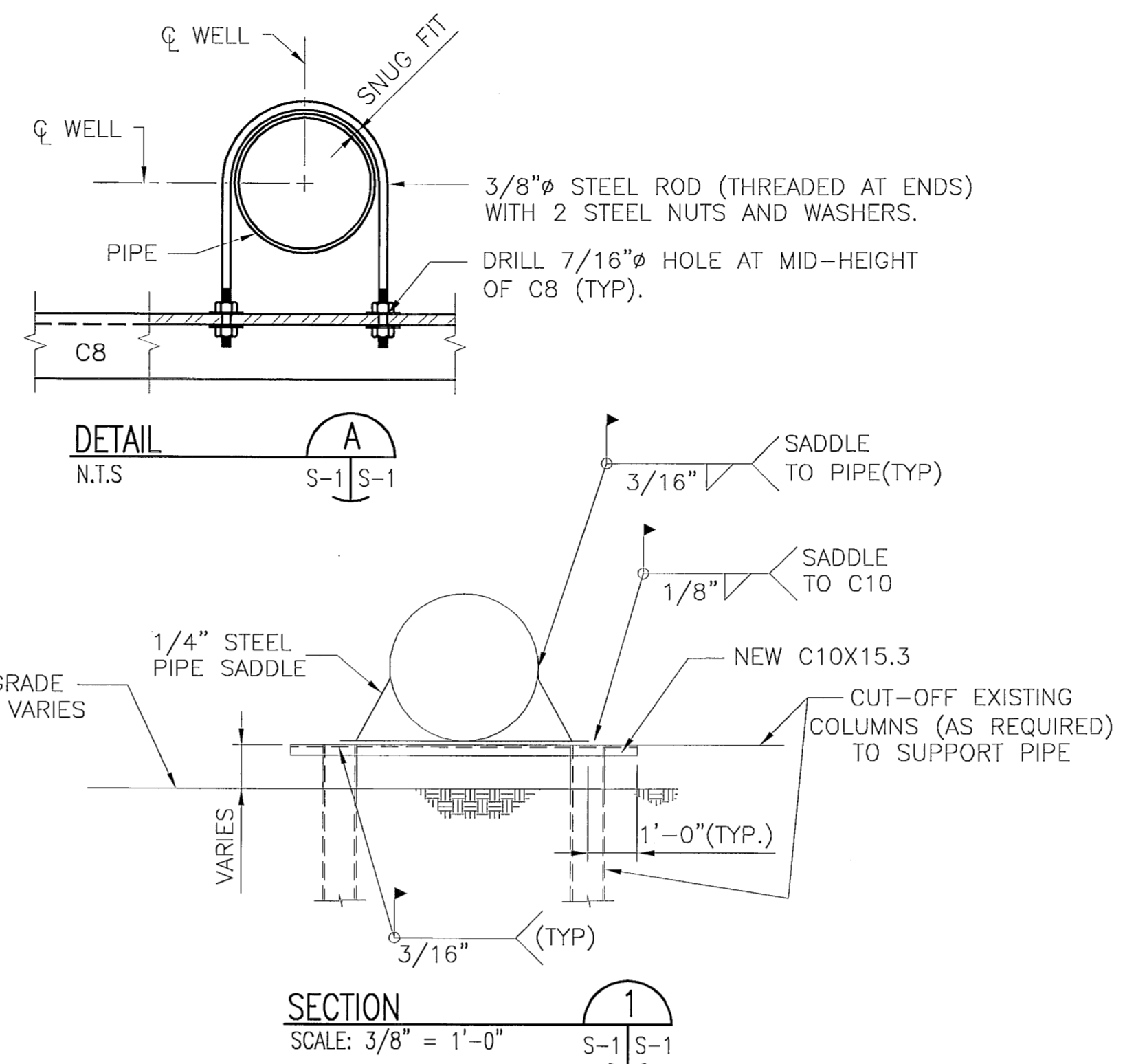
- NOTES:
- EXISTING PUMPS 1, 2, AND 3 ELECTRIC DRIVEN.
 - PUMP HOUSING AND PUMP NO. 4 HAS BEEN REMOVED.
 - PUMP HOUSING AND PUMP NO. 4 TO BE FURNISHED AND INSTALLED AS SHOWN ON MECHANICAL DRAWING M-1.
 - PUMP NO. 4 DISCHARGE LINE HAS BEEN REHABILITATED BY OTHERS. REPAIRED DISCHARGE LINE AND FLAP GATE SHALL REMAIN.
 - DIKE BANKING AT DISCHARGE END OF DISCHARGE LINES MAY BE REHABILITATED BY OTHERS. CONTRACTOR SHALL COORDINATE HIS WORK ACTIVITIES WITH OTHER CONTRACTOR.
 - FOR VIEWS ALONG PIPE NO. 4, SEE ELEVATION 3 ON SHEET S-2. FOR A VIEW PERPENDICULAR TO PIPE NO. 4, SEE ELEVATION VIEW ON SHEET M-1.

REVISIONS				DESIGNED				DRAWN				COPYRIGHT				SCALE: AS SHOWN / GRAPHIC SCALE			
DATE	BY	AUTH.	DESCRIPTION	DATE	BY	AUTH.	DESCRIPTION	DATE	BY	AUTH.	DESCRIPTION	DATE	BY	AUTH.	DESCRIPTION	DATE	BY	AUTH.	DESCRIPTION
				DESIGNED BY:				DRAWN BY:				COPYRIGHT 2001 BY URS				ST. JOHNS RIVER WATER MANAGEMENT DISTRICT LAKE APOPKA FLOWWAY PUMP STATION CONSTRUCTION OF PUMP NO. 4			
				CHECKED BY:				CHECKED BY:				SUPERVISED BY:				SITE PLAN & SUMP DETAILS			
																URS URS Corporation Southern 315 E. Robinson Street Suite 249 Orlando, FL 32801-1949 No. 00000002			
																SHEET NO. C-2 DATE: 6/24/02			

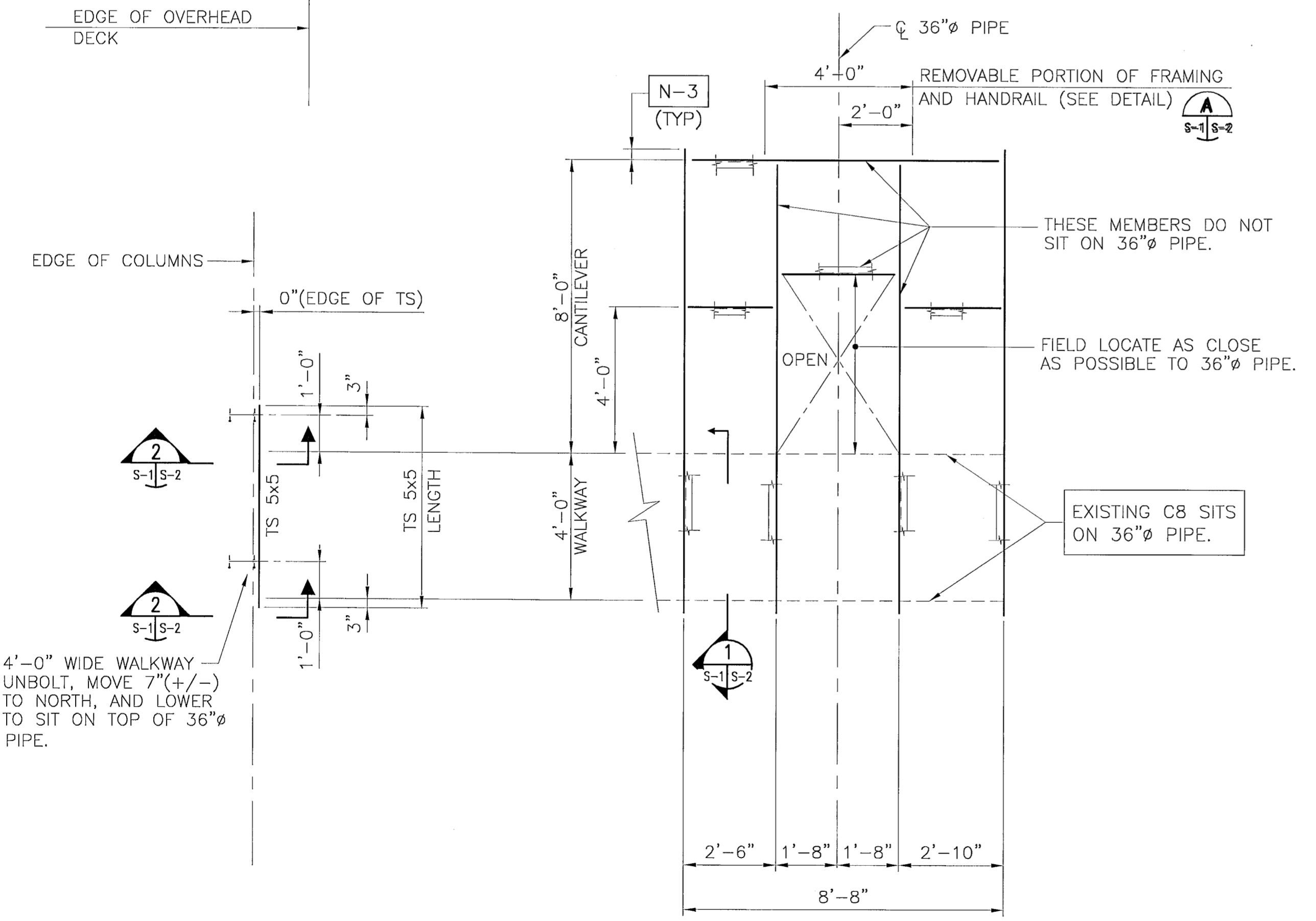
D. Michael Waddell
6/24/02



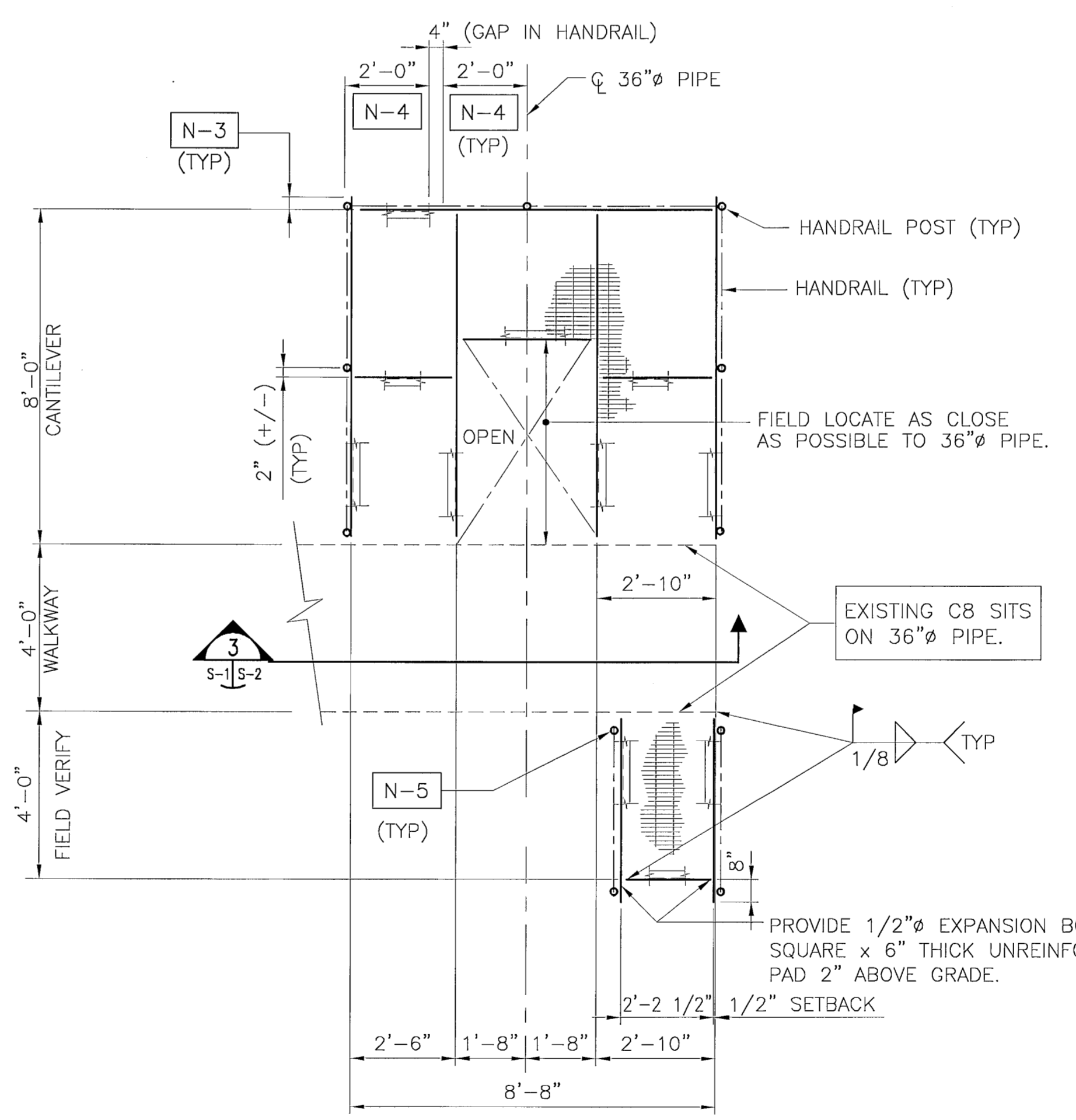
PLATFORM NO. 4 - EXISTING FRAMING/DEMOLITION PLAN
SCALE: 3/8" = 1'-0"



SECTION
SCALE: 3/8" = 1'-0"



PLATFORM NO. 4 - LOWER FRAMING PLAN
SCALE: 3/8" = 1'-0"



PLATFORM NO. 4 - UPPER FRAMING PLAN
SCALE: 3/8" = 1'-0"

STRUCTURAL GENERAL NOTES:

- BUILDING CODE - FLORIDA BUILDING CODE, 2001 EDITION.
- STEEL CODE - AMERICAN INSTITUTE OF STEEL CONSTRUCTION (AISC) SPECIFICATION FOR THE DESIGN, FABRICATION, AND ERECTION OF STRUCTURAL STEEL FOR BUILDINGS, NINTH EDITION.
- STRUCTURAL MATERIAL SHALL BE AS FOLLOWS:
WELD METAL _____ E70XX
STEEL BOLTS _____ A325N
STEEL HANDRAIL PIPE - (1 1/2" O.D.; SCHEDULE 40)
ASTM A53 TYPE E OR S, GRADE B
STEEL STRUCTURAL SHAPES AND PLATES - ASTM A36.
GALVANIZED STEEL "DIAMOND" CATWALK GRATING (McNICHOLS CO. OR EQUAL)
11/16" DEEP WITH STRANDS 5/16" WIDE x 1/4" DEEP (69% OPEN AREA)
APPROX. WEIGHT OF 3.1 POUNDS PER SQUARE FOOT.
- ALL STEEL ITEMS (INCLUDING HANDRAIL) SHALL BE GALVANIZED AS FOLLOWS:
STRUCTURAL SHAPES AND PLATES - ASTM A123
ALL NUTS, RODS, BOLTS AND WASHERS - ASTM A153 CLASS C
OR D DEPENDING ON SIZE
ALL BOLT HOLE DIAMETERS SHALL BE EQUAL TO THE BOLT DIAMETER PLUS 1/16", PRIOR TO GALVANIZING.
- ALL WELDING SHALL CONFORM TO AMERICAN WELDING SOCIETY STRUCTURAL WELDING CODE (STEEL) ANSI/AWS D1.1 (CURRENT EDITION). ALL WELDS ARE TO BE TREATED WITH TWO COATS OF ZINC RICH PAINT.
- SHOP DRAWINGS FOR THIS STRUCTURE ARE REQUIRED AND FABRICATION SHALL NOT BEGIN UNTIL THESE SHOP DRAWINGS ARE REVIEWED AND APPROVED. SHOP DRAWINGS SHALL INCLUDE THE CONTRACTORS FIELD VERIFICATION OF ALL DIMENSIONS.

STRUCTURAL ITEM NOTES:

- N-1** REMOVE STEPS, PIPES, AND BRACES AND THEIR ATTACHMENTS TO THE PLATFORM. GRIND ATTACHMENT POINTS SMOOTH.
- N-2** REMOVE EXISTING HANDRAIL AND ITS ATTACHMENTS TO THE PLATFORM. GRIND ATTACHMENT POINTS SMOOTH.
- N-3** CONNECT HANDRAIL POST TO THIS END OF THE EXTENDED FRAMING MEMBER.
- N-4** PROVIDE HANDRAIL RETURN IN THESE AREAS.
- N-5** PROVIDE DETAIL SIMILAR TO "TYPICAL CONNECTION TO CHANNEL DETAIL" AS SHOWN ON S-2.

V:\V100000362\08\PLATF-4\LAKEAS-1.DWG 04/04/02 09:12

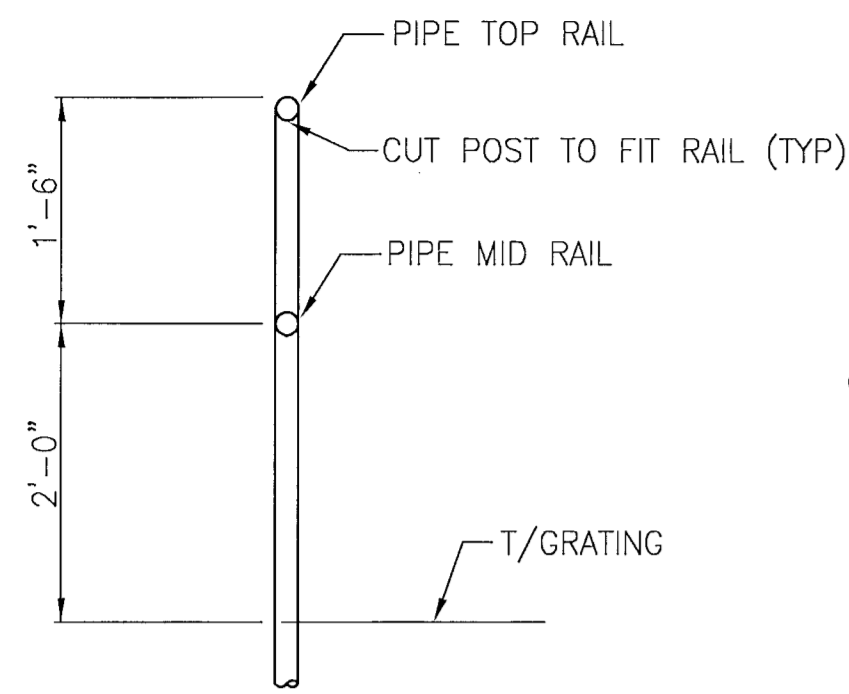
REVISIONS				DATE	BY	AUTH.	DESCRIPTION	DESIGNED BY	NAME	DRAWN BY	NAME	COPYRIGHT	SCALE	PROJECT	ENGINEER OF RECORD	SHEET NO.

ST. JOHNS RIVER WATER MANAGEMENT DISTRICT
LAKE APOPKA FLOWWAY PUMP STATION
PUMP NO. 4

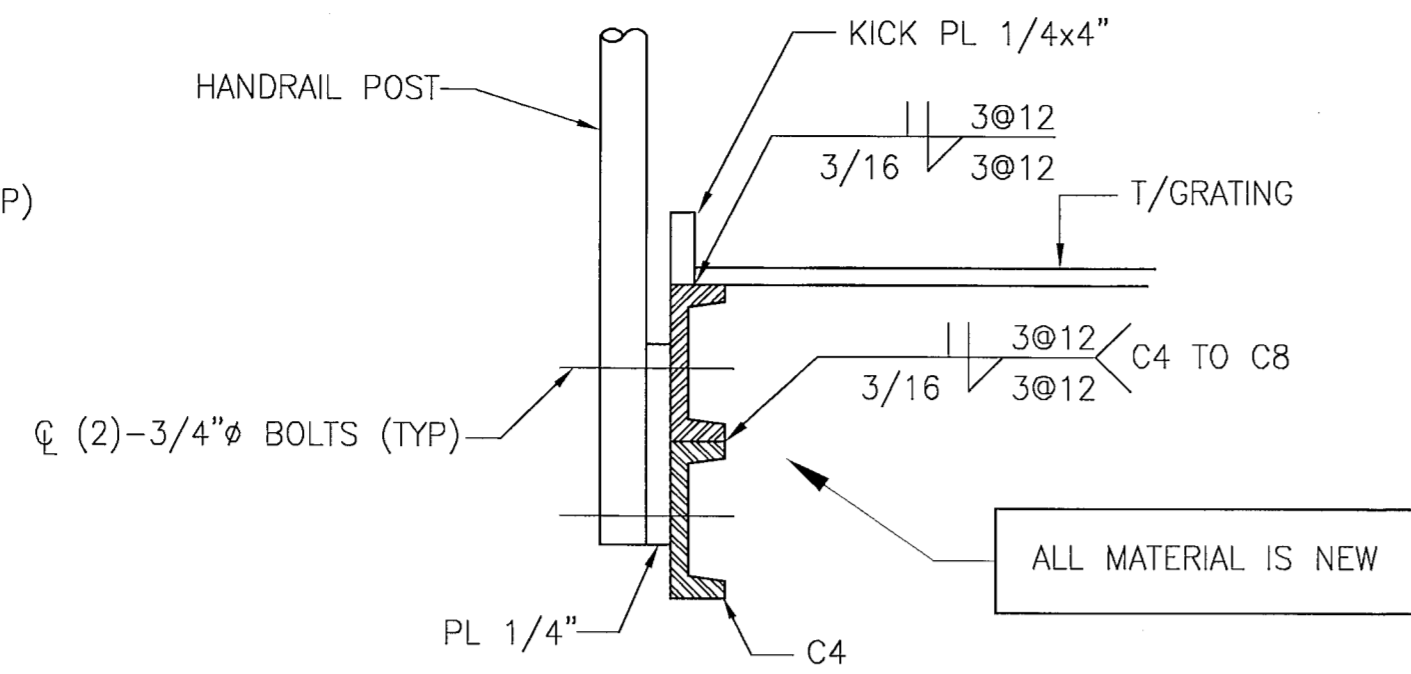
PUMP NO. 4 PLATFORM
PLANS AND NOTES

ENGINEER OF RECORD
URS
URS Corporation Southern
7550 West Courtney Campbell Causeway
Tampa, FL 33607-1602
Certificate of Authorization No. 00000002
William N. Hausheer P.E. No. 31715

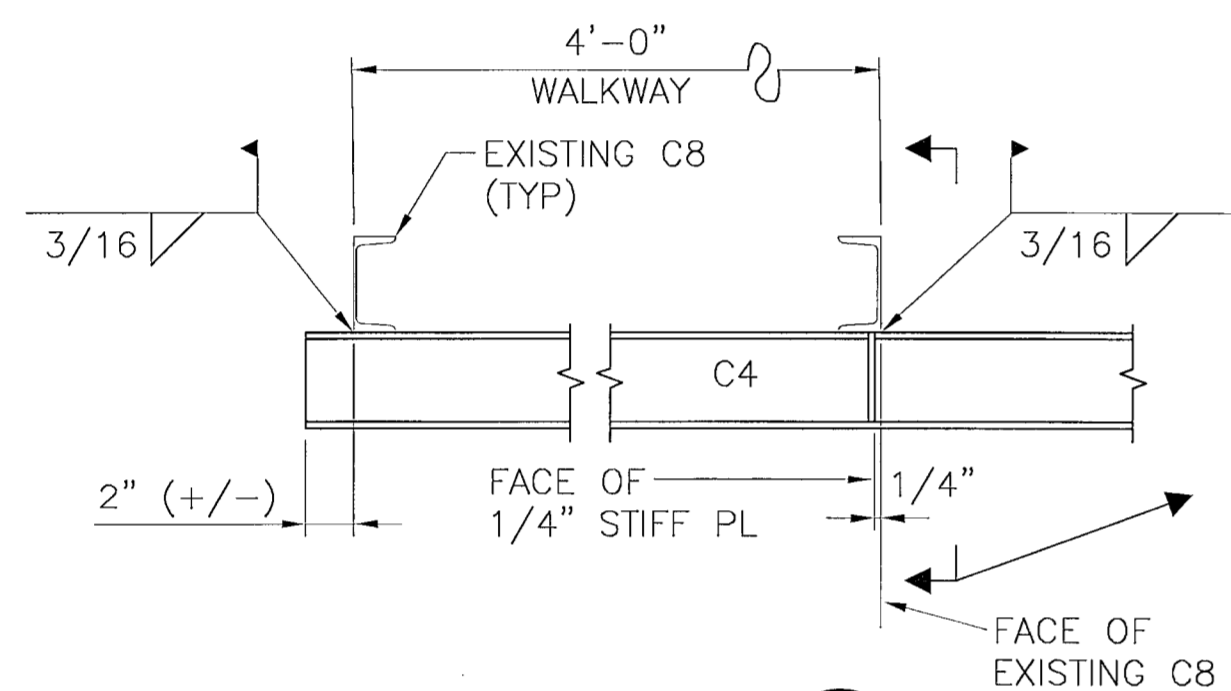
SHEET NO.
S-1
DATE: 4/15/02



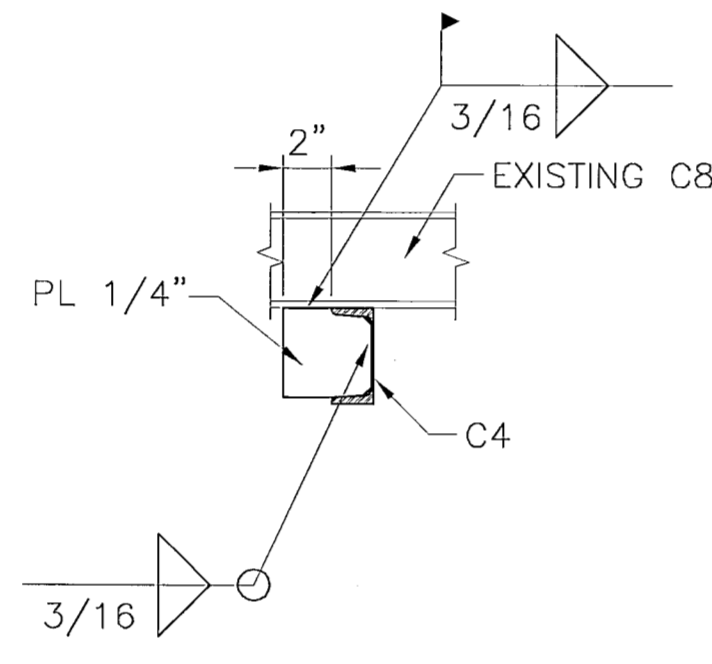
TYPICAL HANDRAIL DETAIL
N.T.S.



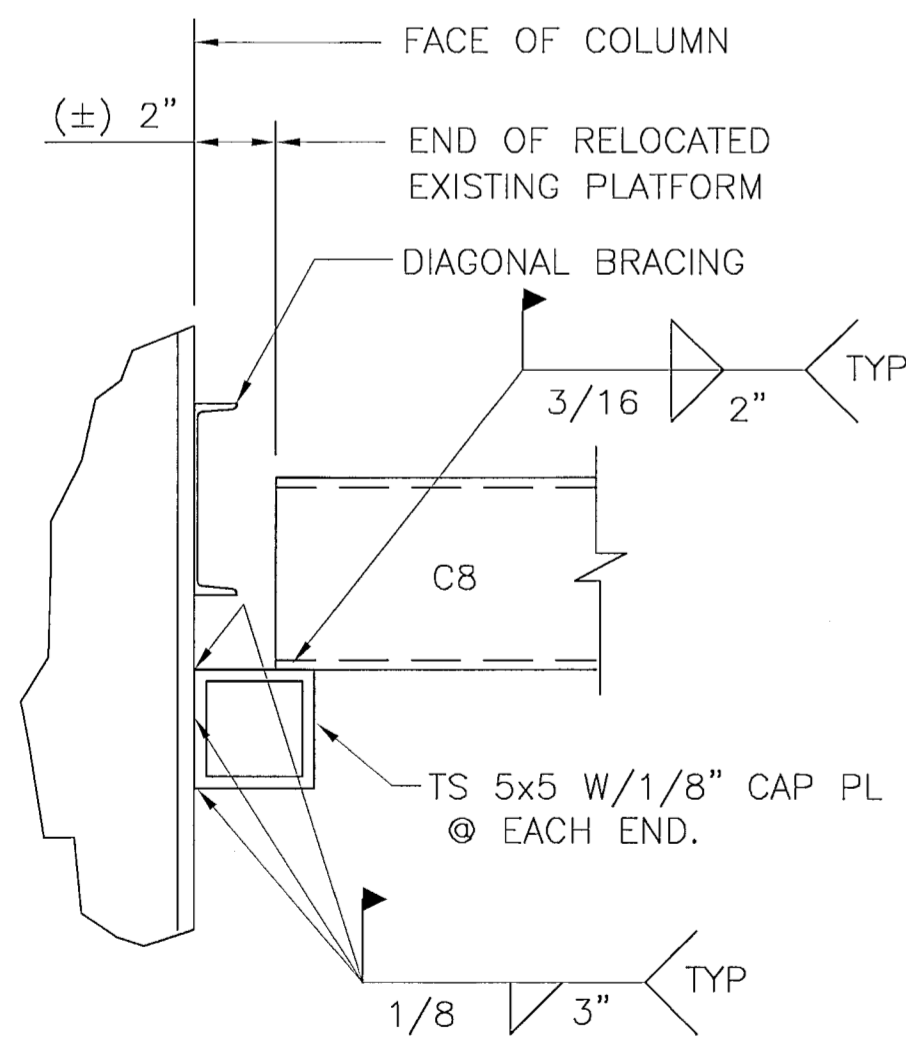
TYPICAL CONNECTION TO CHANNEL DETAIL
N.T.S.



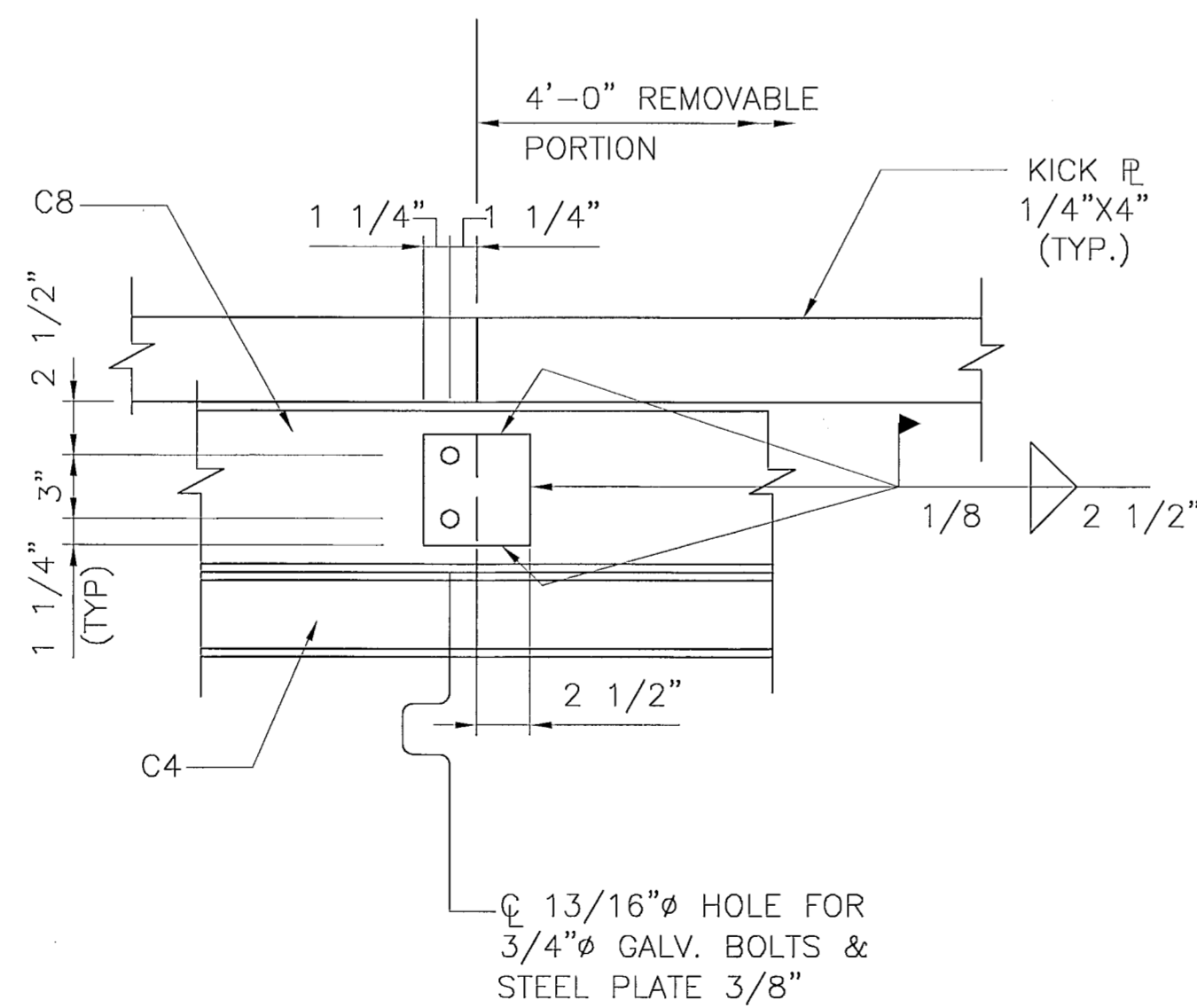
SECTION 1
N.T.S. S-1 | S-2



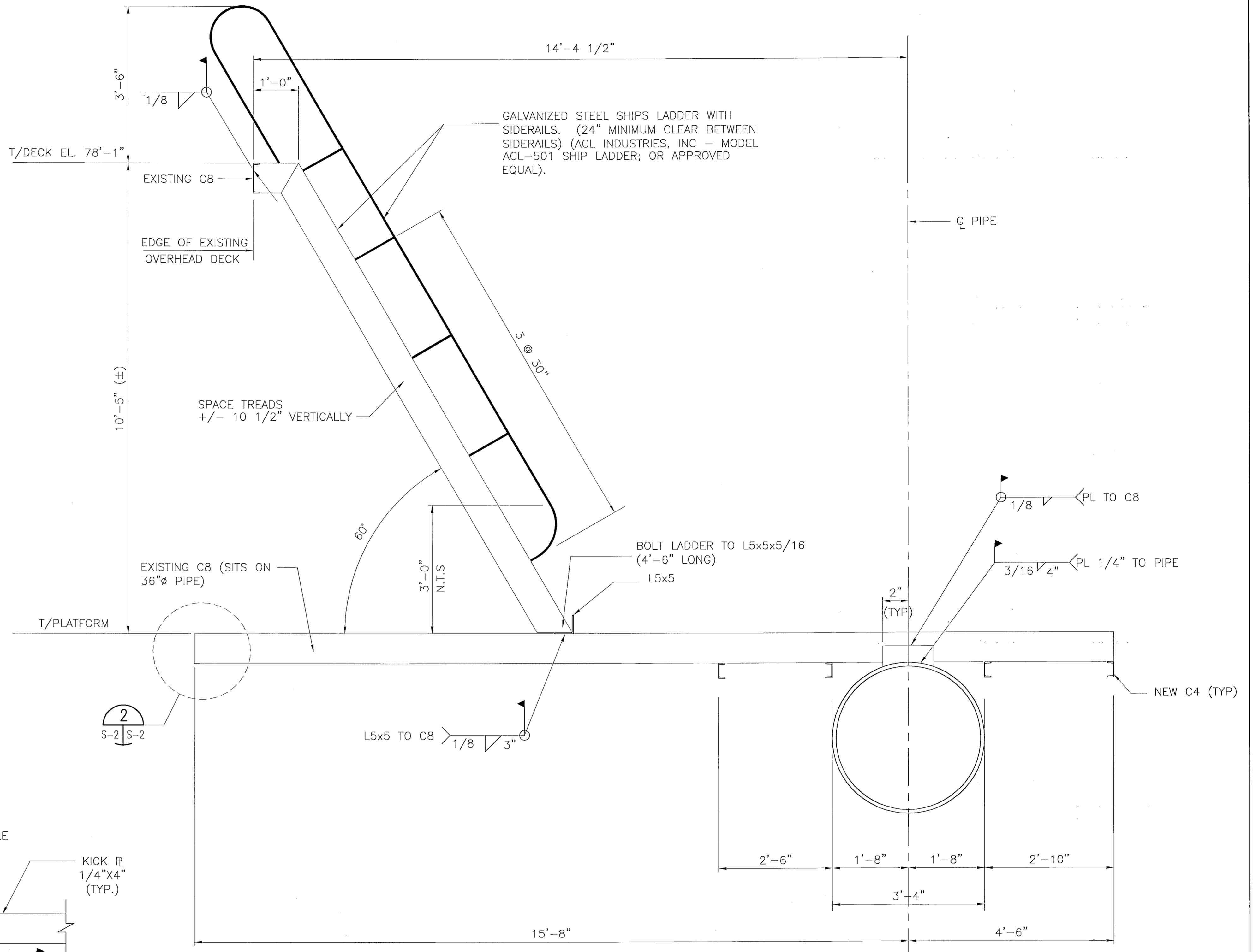
SECTION 2
N.T.S. S-2 | S-2



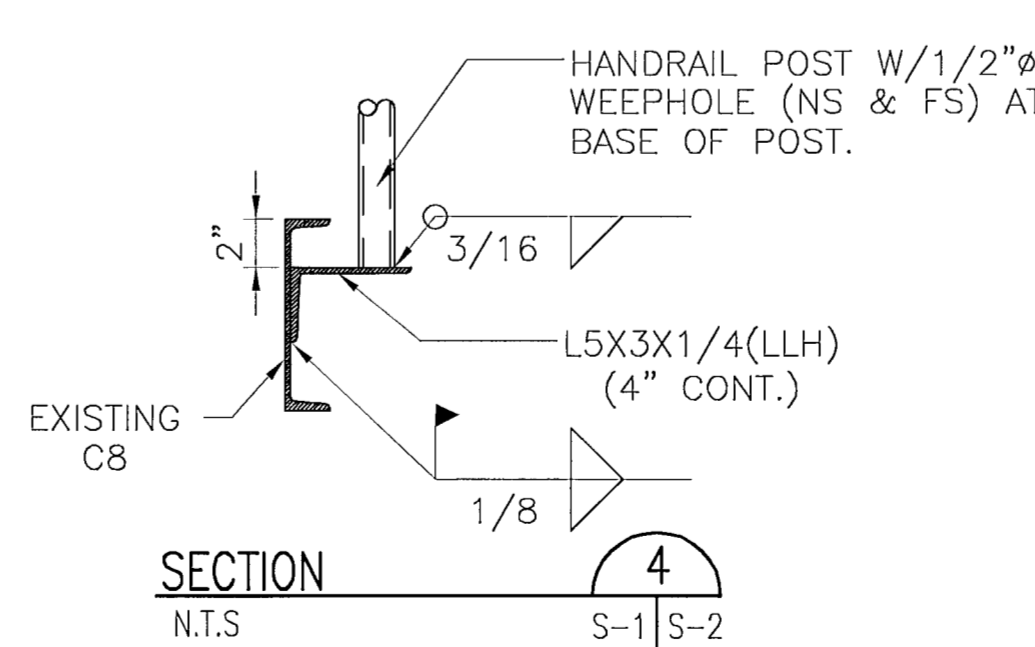
SECTION 2
SCALE: 1 1/2" = 1'-0" S-1 | S-2
S-2



DETAIL AT REMOVABLE PLATFORM FRAMING
N.T.S. A S-1 | S-2



ELEVATION 3
SCALE: 3/4" = 1'-0" S-1 | S-2



SECTION 4
N.T.S. S-1 | S-2

V:\V1\00000362.08\PLATIF-4\LAKEAS-2.DWG 03/12/02 10:17

DATE	BY	AUTH.	DESCRIPTION	DATE	BY	AUTH.	DESCRIPTION

DESIGNED BY	NAME	DRAWN BY	NAME
WNH		EJC	
CHECKED BY		CHECKED BY	WNH
SUPERVISED BY:			

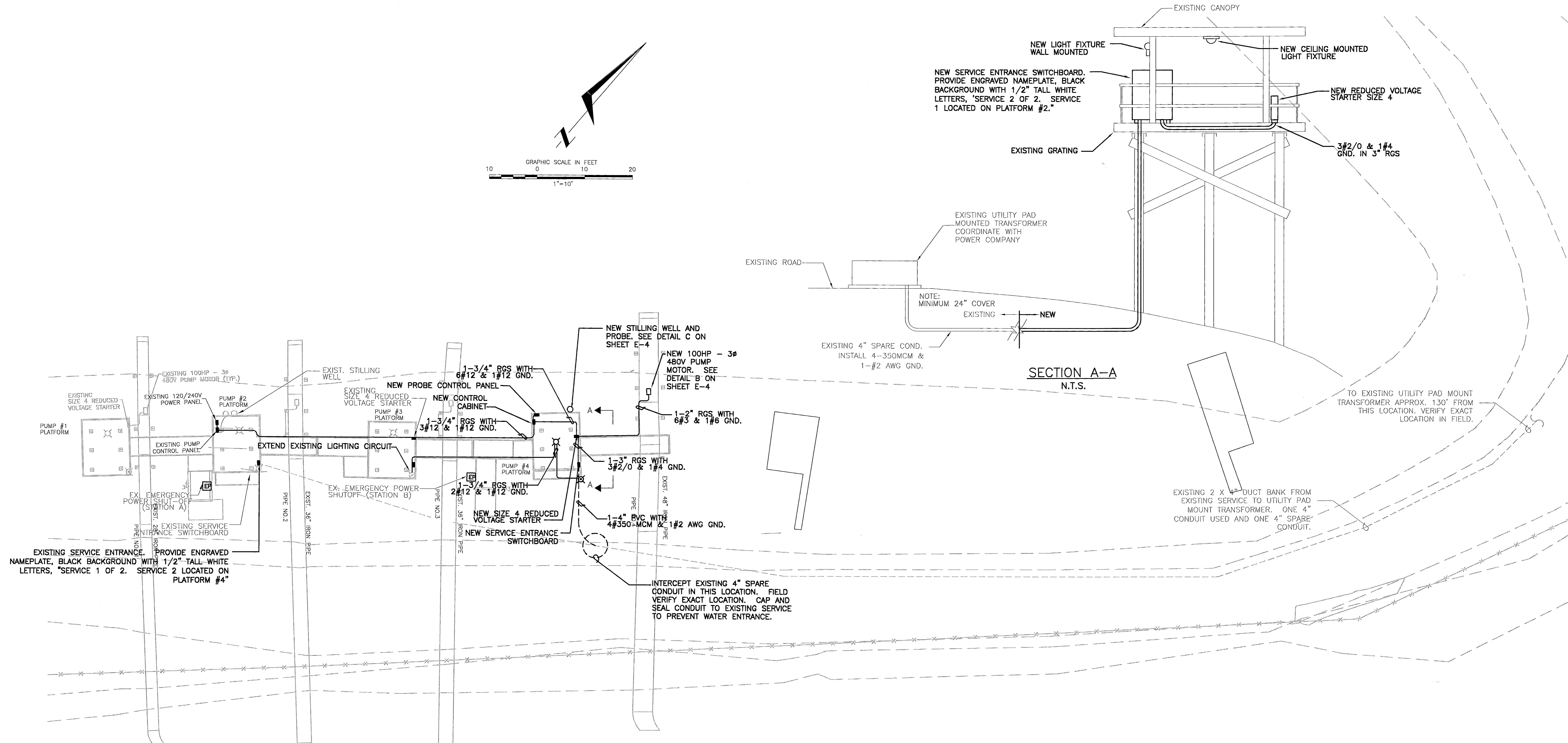
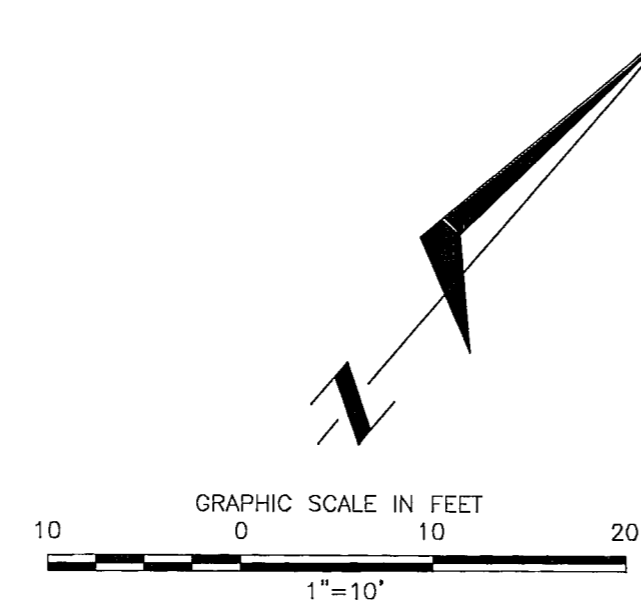
COPYRIGHT	SCALE
COPYRIGHT 2002 BY URS GREINER	AS NOTED

ST. JOHNS RIVER WATER MANAGEMENT DISTRICT
LAKE APOPKA FLOWWAY PUMP STATION
PUMP NO. 4

PUMP NO. 4 PLATFORM
SECTIONS & DETAILS

ENGINEER OF RECORD	SHEET NO.
URS URS Corporation Southern 7650 West Country Campbell Causeway Tampa, FL 33607-1462 Certificate of Authorization No. 00000002 William N. Neutheer P.E. No. 31715	S-2 DATE: 4/15/02

T:\LAKE APOPKA\ELEC\ELEC-1.DWG 06/20/02 09:49



EXISTING CANOPY
 NEW LIGHT FIXTURE WALL MOUNTED
 NEW CEILING MOUNTED LIGHT FIXTURE
 NEW SERVICE ENTRANCE SWITCHBOARD. PROVIDE ENGRAVED NAMEPLATE, BLACK BACKGROUND WITH 1/2" TALL WHITE LETTERS, "SERVICE 2 OF 2. SERVICE 1 LOCATED ON PLATFORM #2."
 NEW REDUCED VOLTAGE STARTER SIZE 4
 3#2/0 & 1#4 GND. IN 3" RGS
 EXISTING GRATING

EXISTING UTILITY PAD MOUNTED TRANSFORMER COORDINATE WITH POWER COMPANY

NOTE: MINIMUM 24" COVER EXISTING NEW

EXISTING 4" SPARE COND. INSTALL 4-350MCM & 1-#2 AWG GND.

SECTION A-A
 N.T.S.

TO EXISTING UTILITY PAD MOUNT TRANSFORMER APPROX. 130' FROM THIS LOCATION. VERIFY EXACT LOCATION IN FIELD.

EXISTING 2 X 4" DUCT BANK FROM EXISTING SERVICE TO UTILITY PAD MOUNT TRANSFORMER. ONE 4" CONDUIT USED AND ONE 4" SPARE CONDUIT.

EXISTING SERVICE ENTRANCE. PROVIDE ENGRAVED NAMEPLATE, BLACK BACKGROUND WITH 1/2" TALL WHITE LETTERS, "SERVICE 1 OF 2. SERVICE 2 LOCATED ON PLATFORM #4"

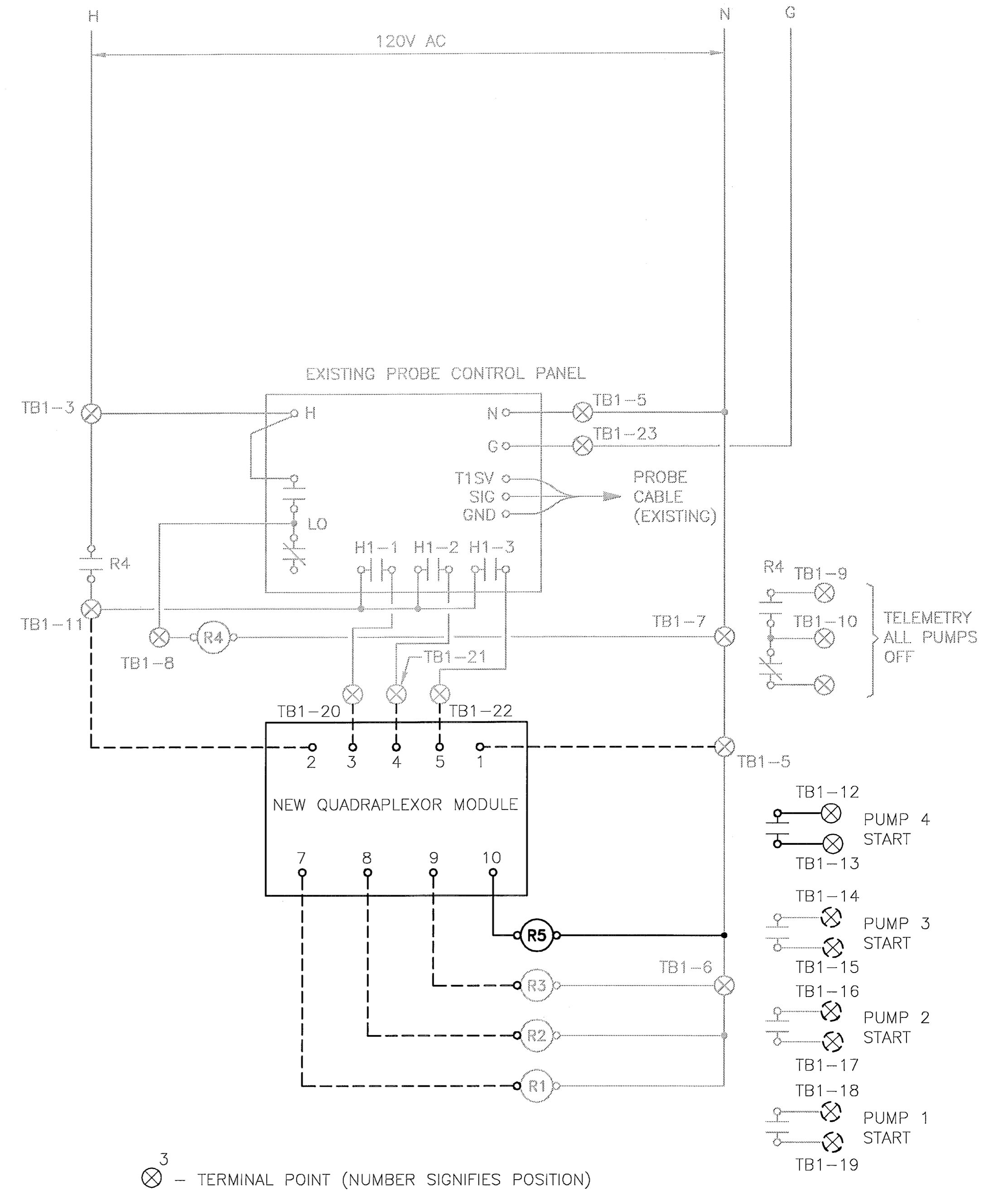
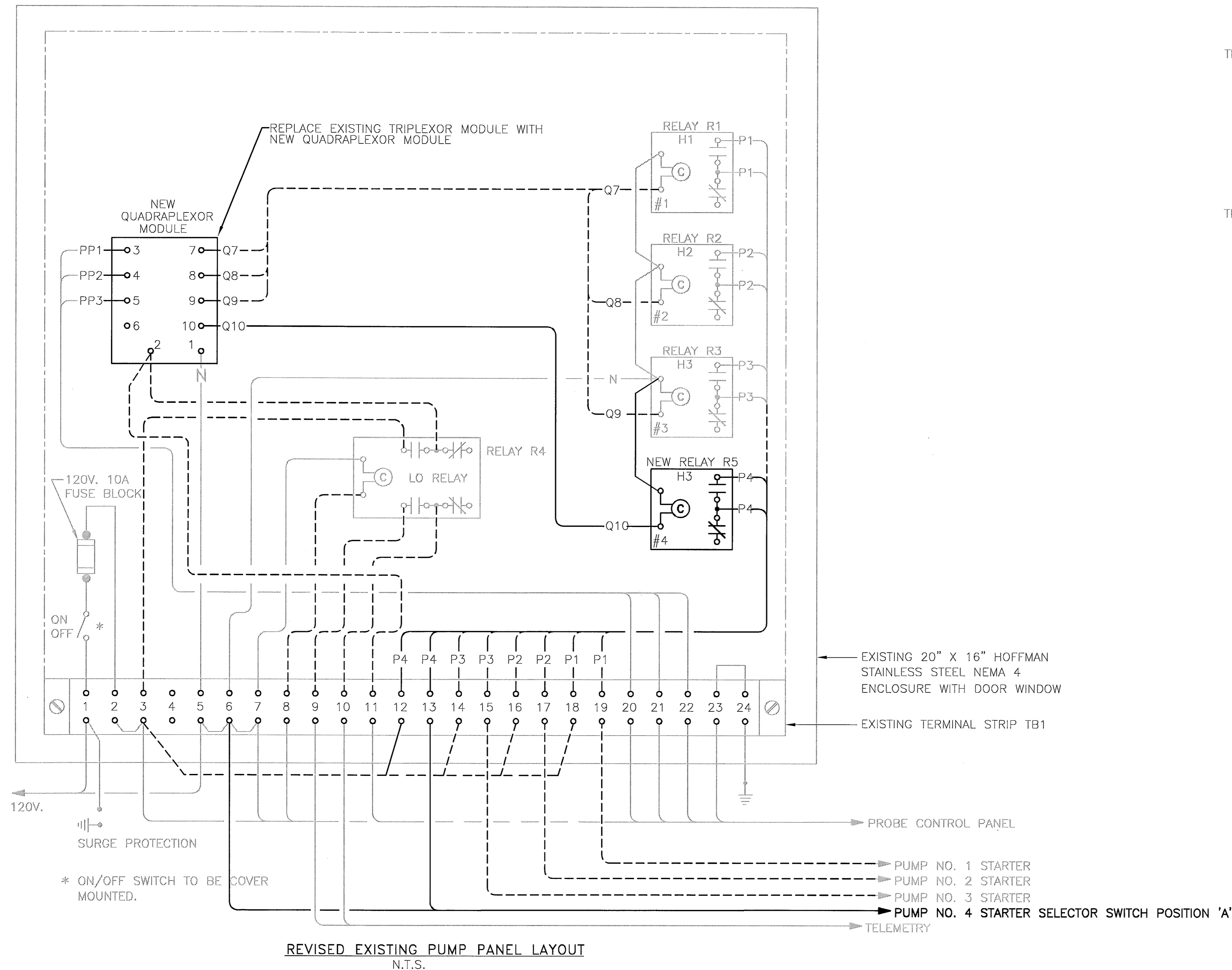
INTERCEPT EXISTING 4" SPARE CONDUIT IN THIS LOCATION. FIELD VERIFY EXACT LOCATION. CAP AND SEAL CONDUIT TO EXISTING SERVICE TO PREVENT WATER ENTRANCE.

NOTE: CONTRACTOR SHALL CONNECT THE PROPOSED PUMP ELECTRICAL SYSTEM TO SUMPTER ELECTRIC.

REVISIONS										DESIGNED BY		DRAWN BY		COPYRIGHT		SCALE: AS SHOWN/GRAPHIC SCALE	ST. JOHNS RIVER WATER MANAGEMENT DISTRICT LAKE APOPKA FLOWWAY PUMP STATION	ELECTRICAL SITE PLAN	URS Corporation Southern 315 E. Robinson Street Suite 205 Orlando, FL 32801-1949 No. 00000002	SHEET NO.	
DATE	BY	AUTH.	DESCRIPTION	DATE	BY	AUTH.	DESCRIPTION	NAME	NAME	DATE	BY	DATE	BY	DATE	BY					DATE	BY
04/11/02	JTV	CSK	REVISION #1									2001						E-1			

Handwritten signature and date: 24 JUN 02

T:\LAKE APOPKA\ELEC\ELEC-2.DWG 06/20/02 09:53



DATE		BY	AUTH.	DESCRIPTION	REVISIONS		NAME	NAME	COPYRIGHT
DATE	BY	AUTH.	DESCRIPTION	DATE	BY	AUTH.	DESIGNED BY	DRAWN BY	COPYRIGHT
04/11/02	JTV	CSK	REVISION #1				CHECKED BY	CHECKED BY	2001 BY URS
							SUPERVISED BY:		

SCALE: AS SHOWN/GRAPHIC SCALE

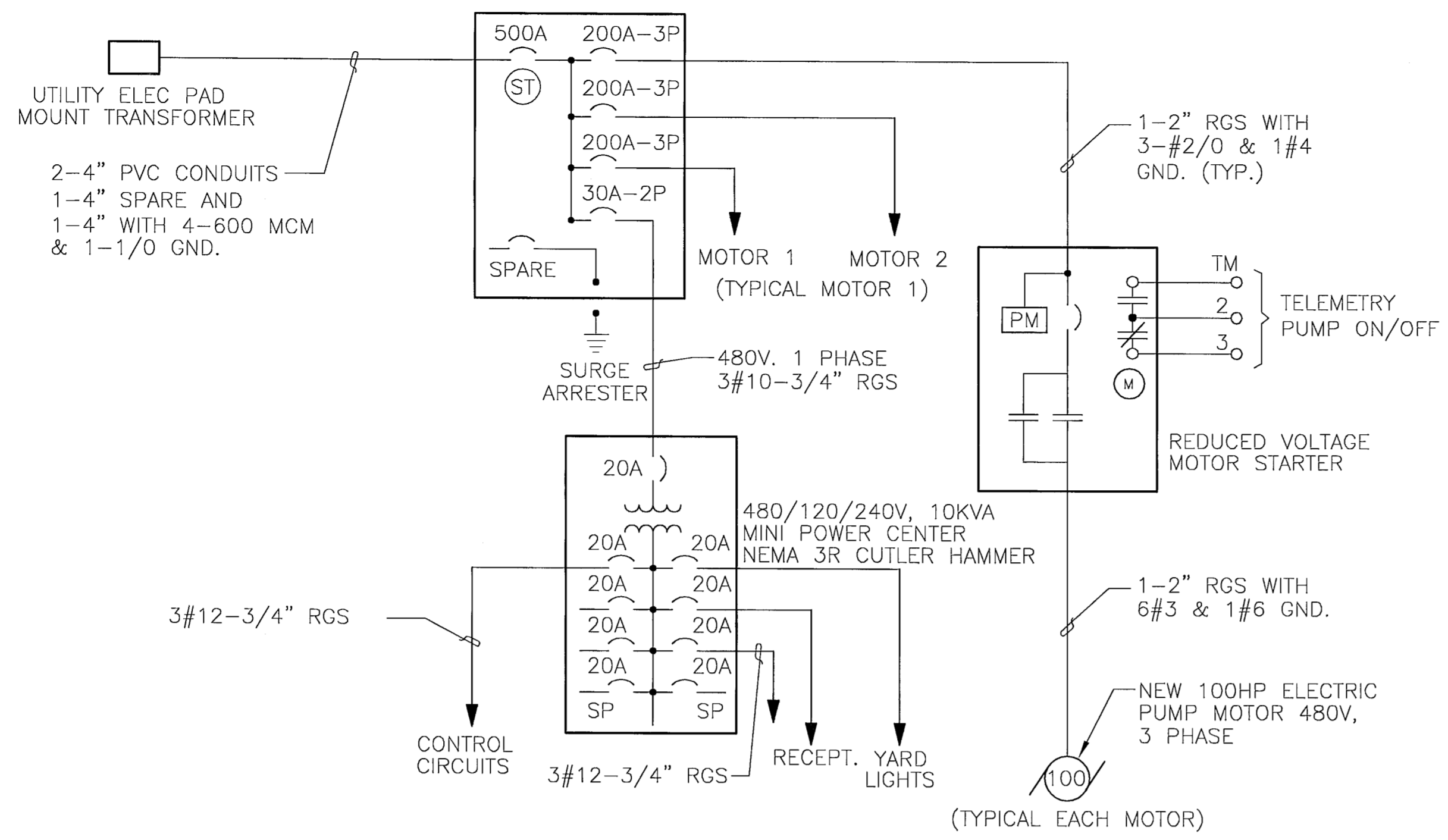
ST. JOHNS RIVER WATER MANAGEMENT DISTRICT
LAKE APOPKA FLOWWAY PUMP STATION

EXISTING CONTROL SYSTEM MODIFICATIONS

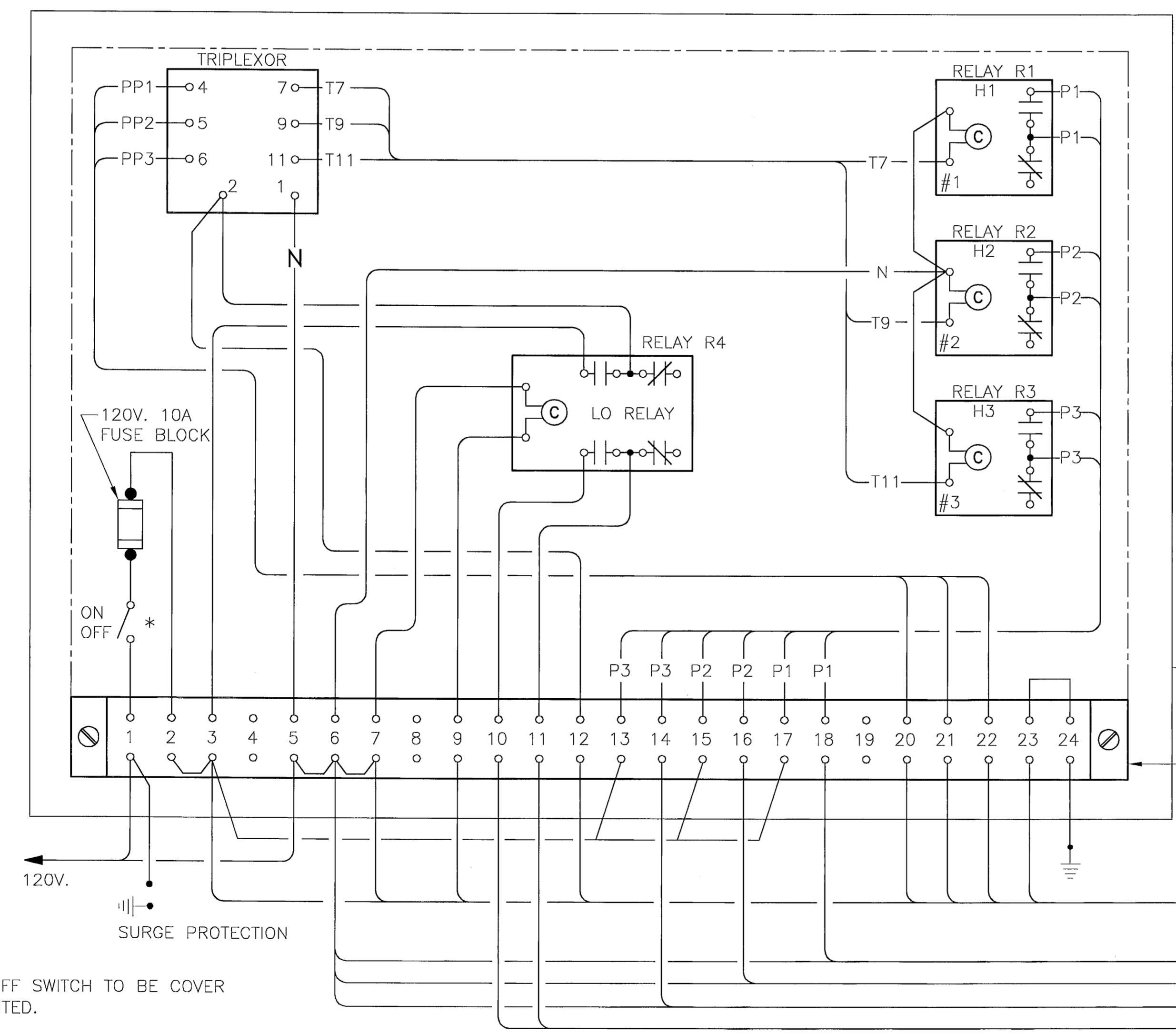
URS
URS Corporation Southern
315 E. Robinson Street
Suite 215
Orlando, FL 32801-1949
No. 00000002

SHEET NO.
E-2
of
DATE: 3/29/01

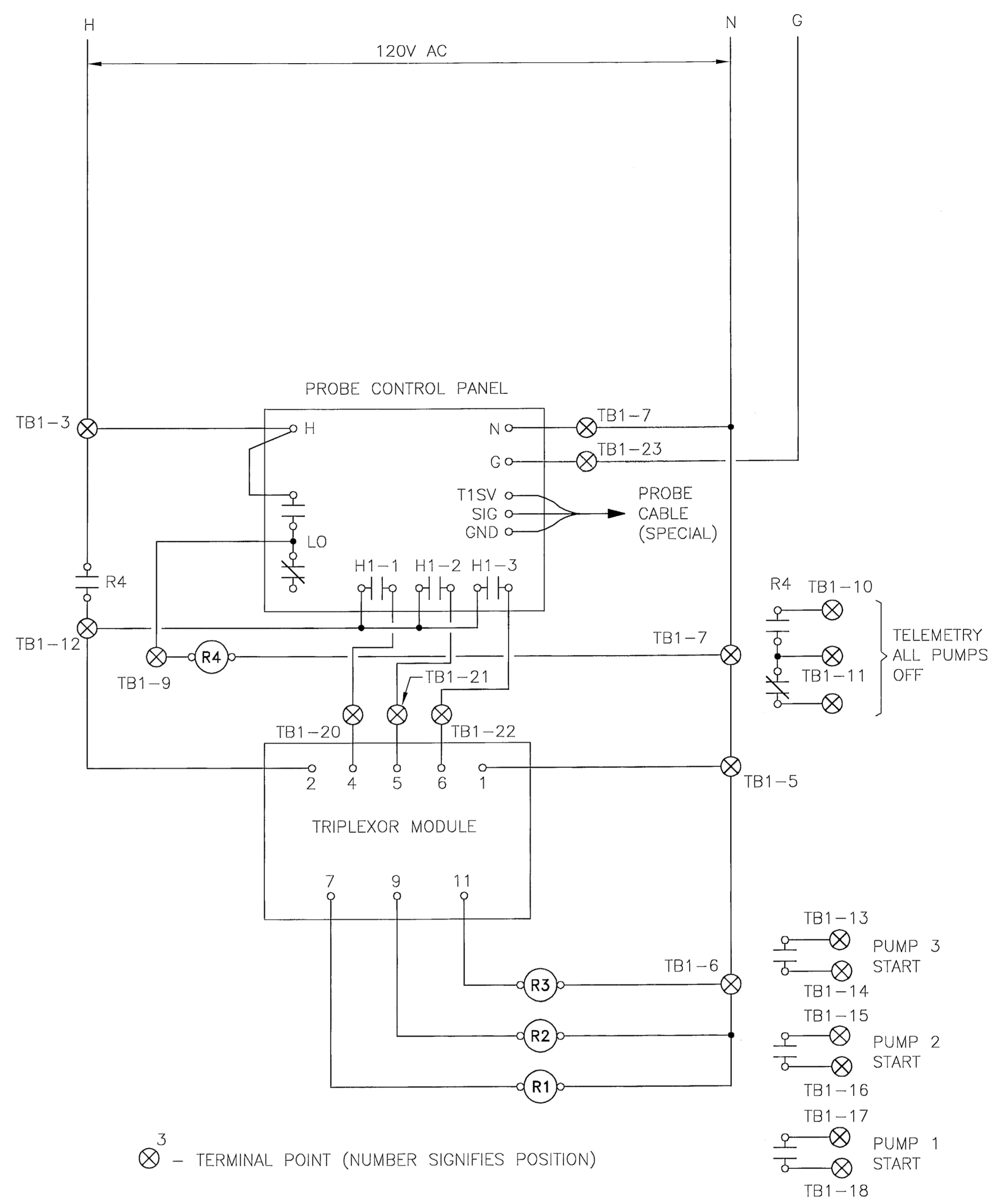
24 JUN 02



POWER DISTRIBUTION ONE LINE DIAGRAM
(MOTOR - TYPICAL EACH PLATFORM)
N.T.S.



PUMP PANEL LAYOUT (TYPICAL)
N.T.S.



CONTROL SCHEMATIC
N.T.S.

20" X 16" HOFFMAN STAINLESS
STEEL NEMA 4 ENCLOSURE WITH
DOOR WINDOW

TERMINAL STRIP TB1

PROBE CONTROL PANEL

PUMP NO. 1 STARTER

PUMP NO. 2 STARTER

PUMP NO. 3 STARTER

TELEMETRY

ALL INFORMATION SHOWN ON THIS DRAWING IS FROM
EXISTING "AS-BUILT DRAWINGS" AND IS ISSUED FOR
REFERENCE AND CONTRACTOR CONVENIENCE ONLY

T:\LAKE APOPKA\ELEC\ELEC-5.DWG 06/20/02 09:54

REVISIONS		DESIGNED BY		NAME		COPYRIGHT		SCALE: AS SHOWN/GRAPHIC SCALE	
DATE	BY	DATE	BY	DATE	BY	DATE	BY	DATE	BY

DESIGNED BY	DRAWN BY	COPYRIGHT

NAME	NAME	COPYRIGHT

ST. JOHNS RIVER WATER MANAGEMENT DISTRICT
LAKE APOPKA FLOWWAY PUMP STATION

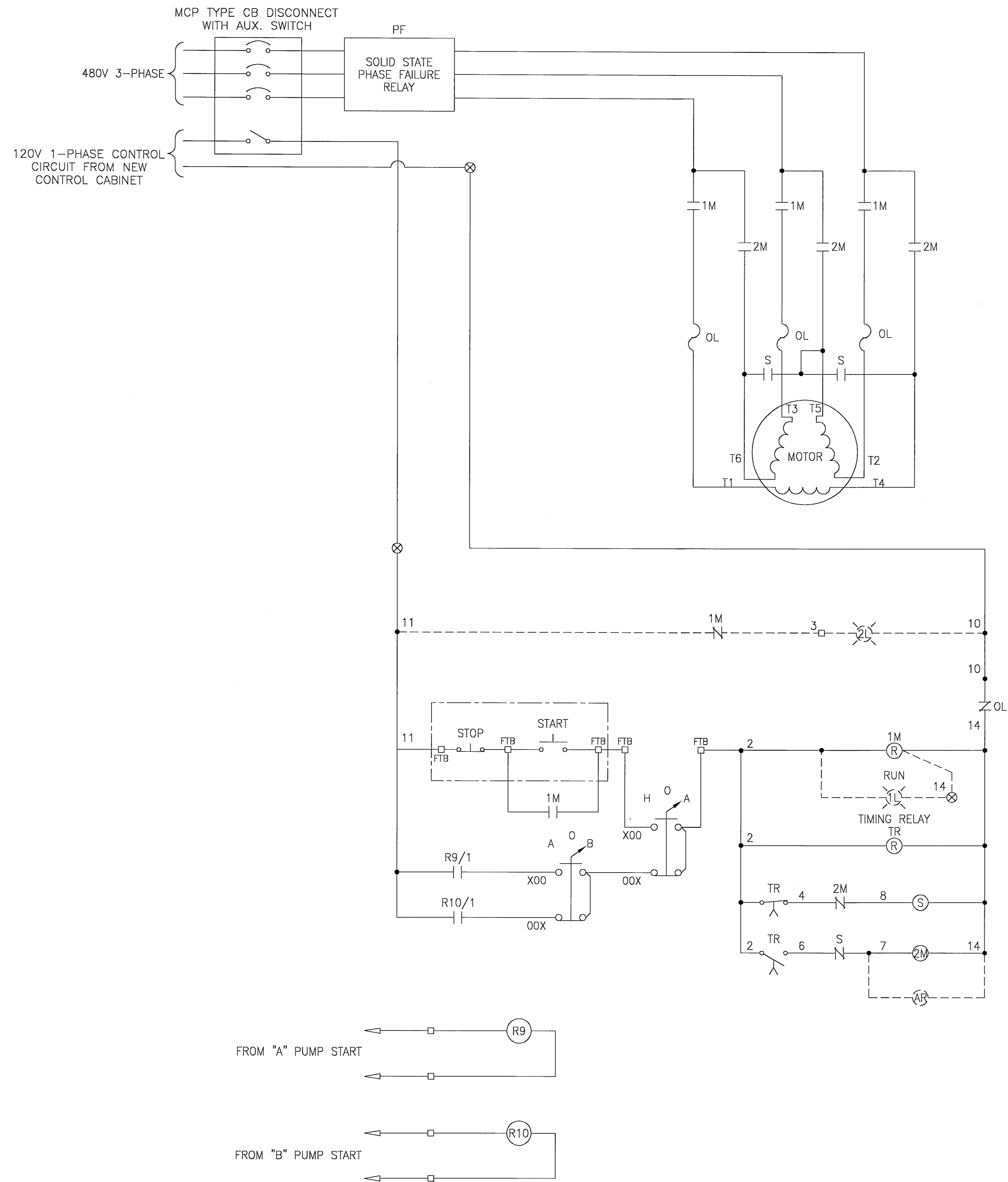
EXISTING ELECTRICAL WIRING

URS
URS Corporation Southern
315 E. Robinson Street
Suite 245
Orlando, FL 32801-1949
No. 00000002

SHEET NO.
E-5
of
DATE: 3/29/01

24 JUN 02

T:\LAKE APOPKA\ELEC\ELEC-6.DWG 06/20/02 09:54



DATE		BY	AUTH.	DESCRIPTION	DATE	BY	AUTH.	DESCRIPTION

DESIGNED BY	NAME	DRAWN BY	NAME

CHECKED BY	NAME

COPYRIGHT 2001 BY URS

SCALE: AS SHOWN / GRAPHIC SCALE
 ST. JOHNS RIVER WATER MANAGEMENT DISTRICT
 LAKE APOPKA FLOWWAY PUMP STATION

PUMP #4 SCHEMATIC CONTROL DIAGRAM

URS Corporation Southern
 315 E. Robinson Street
 Suite 245
 Orlando, FL 32801-1949
 No. 00000002

SHEET NO.
 E-6
 of
 DATE: 3/29/01

Handwritten signature and date: 24 JUN 02