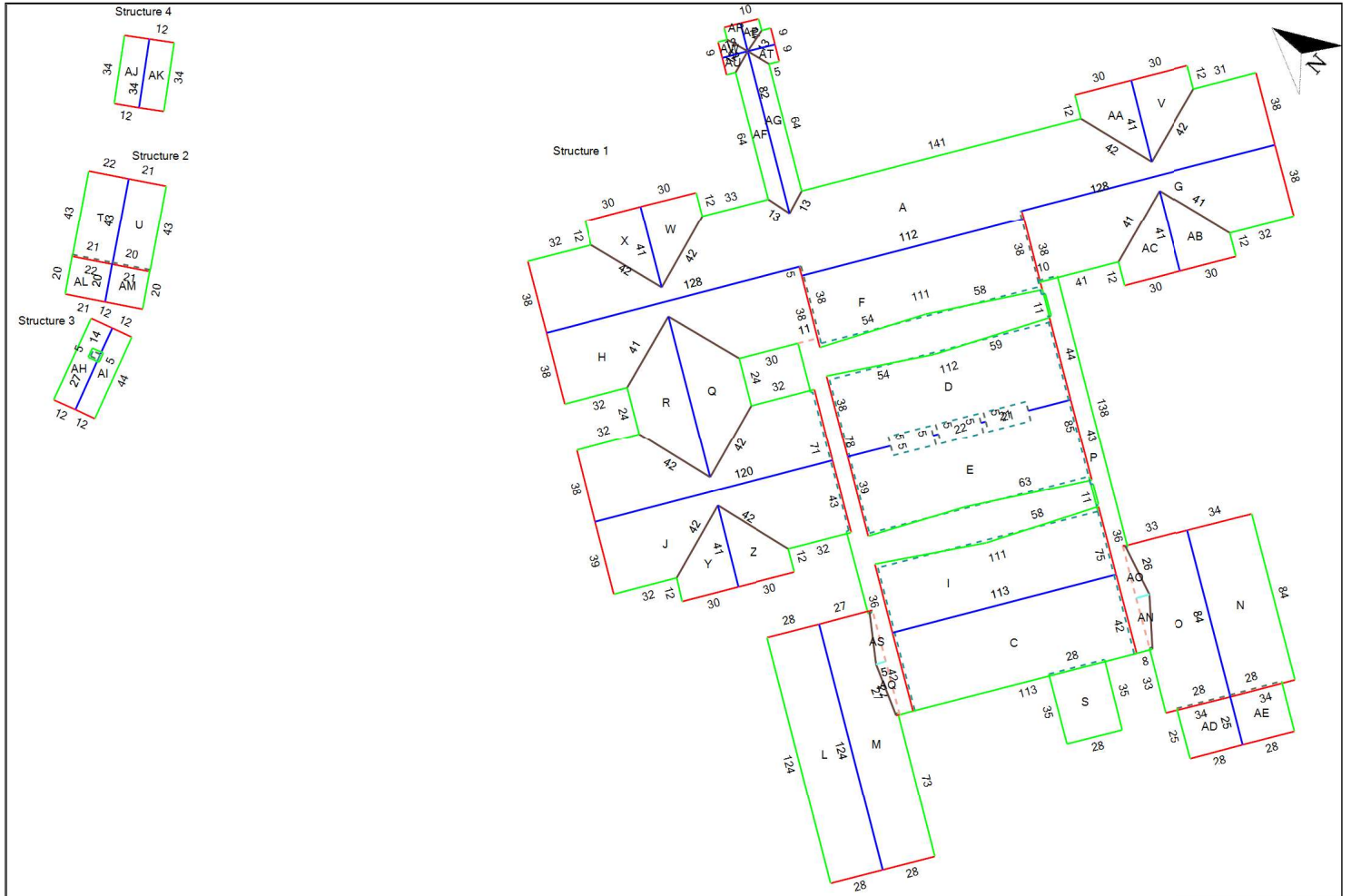


Plan Diagram



Ridge	Hip	Eave	Parapet	Apron Flashing	Pitch Change
High Drip	Valley	Rake	Protrusion	Step Flashing	

To improve readability the lengths displayed in this diagram are rounded to the nearest whole number. Lengths under 4 feet are omitted for clarity.

Facet	Sq.Ft.	Pitch	Facet	Sq.Ft.	Pitch	Facet	Sq.Ft.	Pitch	Facet	Sq.Ft.	Pitch	Facet	Sq.Ft.	Pitch
A	12785	4:12	I	3913	4:12	Q	1580	4:12	Y	792	4:12	AG	653	4:12
B	5742	0:12	J	3796	4:12	R	1572	4:12	Z	792	4:12	AH	531	5:12
C	4716	4:12	K	3747	4:12	S	995	0:12	AA	790	4:12	AI	506	5:12
D	4398	4:12	L	3473	4:12	T	955	6:12	AB	787	4:12	AJ	419	2:12
E	4351	4:12	M	3343	4:12	U	908	6:12	AC	787	4:12	AK	419	2:12
F	4125	4:12	N	2863	4:12	V	797	4:12	AD	708	4:12	AL	414	4:12
G	4099	4:12	O	2681	4:12	W	795	4:12	AE	700	4:12	AM	390	4:12
H	4062	4:12	P	1711	0:12	X	795	4:12	AF	653	4:12	11 more, 922 sq.ft.		

See Appendix for complete facet list

AREA BY PITCH (in squares)					
0 : 12	2 : 12	3 : 12	4 : 12	5 : 12	6 : 12
84.8	8.4	3.9	758.5	10.4	18.7

WASTE FACTOR TABLE (in squares, includes pitched and flat totals)					
0%	5%	10%	12%	15%	20%
884.4	928.6	972.8	990.5	1017.1	1061.3

The waste factors presented in the table are simple calculations based on the total area of the roof. They do not include any other roofing elements such as ridge, valley or hips. Use your best judgement and past experience to select the waste factor that works best for this particular roof.