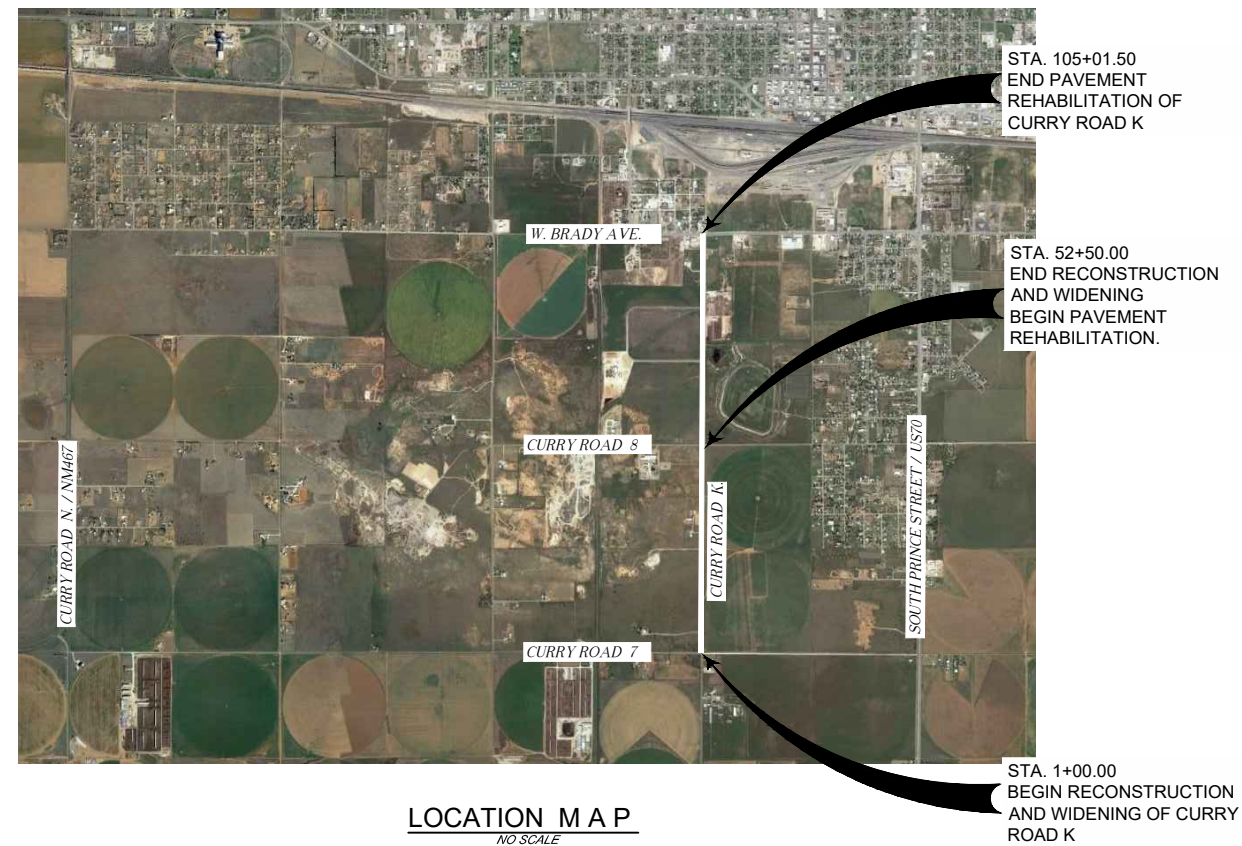
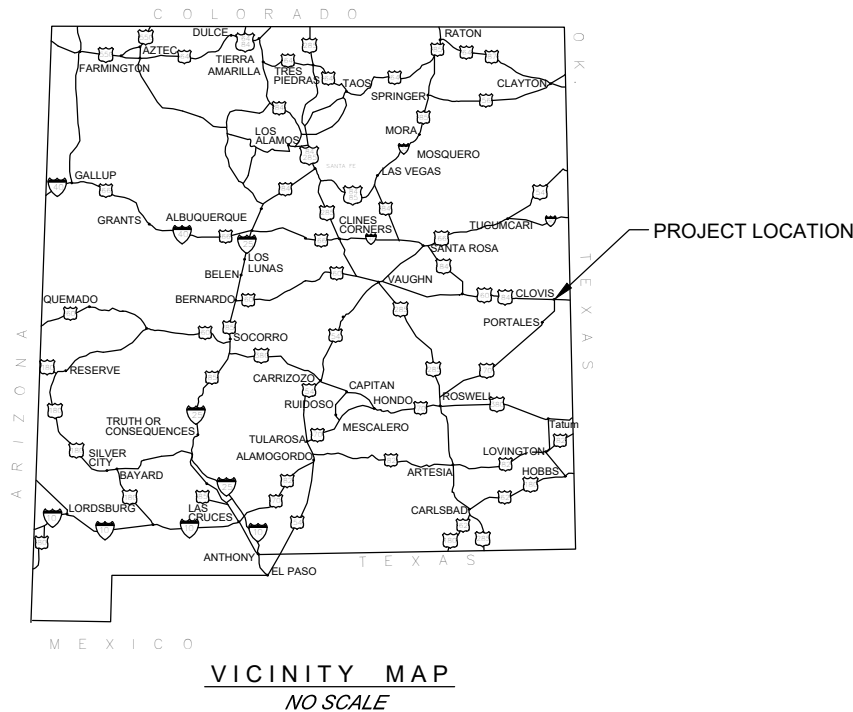


CURRY COUNTY CURRY ROAD K REHABILITATION PROJECT

March 2022

ITB # 2021/22-03
CN: LP20025



INDEX OF SHEETS		
SHEET NUMBER	SHEET DESCRIPTION	SHEET COUNT
CURRY ROAD K REHABILITATION		
SERIES 1		
1-1	COVER SHEET AND INDEX OF SHEETS	1
1-2	GENERAL NOTES	1
1-3	SUMMARY OF QUANTITIES	1
SHEET SUBTOTAL=		3
SERIES 2		
2-1	EXISTING TYPICAL SECTION	1
2-2	PROPOSED TYPICAL SECTIONS-BID ALTERNATE No.1	1
2-3	PROPOSED TYPICAL SECTIONS-BID ALTERNATE No.2	1
2-4	INTERSECTION RECONSTRUCTION DETAIL	1
2-5	SURFACING QUANTITIES	1
SHEET SUBTOTAL=		5
SERIES 3		
3-1	CR K LINE DIAGRAM	1
SHEET SUBTOTAL=		1
PLANSET TOTAL =		9


THIS ROADWAY PROJECT INVOLVES TWO AVAILABLE OPTIONS HEREIN LISTED AS ALTERNATE NO. 1 AND ALTERNATE NO. 2.

ALTERNATE NO. 1 ENTAILS THE RECONSTRUCTION AND WIDENING TO 28 FEET OF CURRY ROAD K FROM CURRY ROAD 7 TO CURRY ROAD 8 WITH A PAVEMENT SECTION OF 2" OF HOT MIX ASPHALT OVER 6" OF PROCESSING, PLACING, AND COMPACTION INFUSED WITH 2" OF BASECOURSE. FROM CURRY ROAD 8 TO CURRY ROAD 9 (W BRADY AVENUE) PAVEMENT REHABILITATION CONSISTS OF MILLING AND OVERLAYING 4" OF HOT MIX ASPHALT.

ALTERNATE NO. 2 ENTAILS THE RECONSTRUCTION AND WIDENING TO 28 FEET OF CURRY ROAD K FROM CURRY ROAD 7 TO CURRY ROAD 8 WITH A PAVEMENT SECTION OF DOUBLE PENETRATION CHIP SEAL OVER 6" OF PROCESSING, PLACING, AND COMPACTION INFUSED WITH 2" OF BASECOURSE. RECONSTRUCTION OF FIVE ACCESSES WITH DOUBLE PENETRATION CHIP SEAL OVER 6" OF BASECOURSE. FROM CURRY ROAD 8 TO CURRY ROAD 9 (W BRADY AVENUE) PAVEMENT REHABILITATION CONSISTS OF MILLING AND OVERLAYING 4" OF HOT MIX ASPHALT.

THE 2019 EDITION OF THE NEW MEXICO DEPARTMENT OF TRANSPORTATION STANDARD SPECIFICATIONS FOR HIGHWAY AND BRIDGE CONSTRUCTION, INCLUDING ASSOCIATED SUPPLEMENTAL SPECIFICATIONS, THE NEW MEXICO STANDARD SPECIFICATIONS FOR PUBLIC WORKS CONSTRUCTION, AND THE CURRY COUNTY ROAD POLICY 2017, SHALL GOVERN CONSTRUCTION OF THIS PROJECT.

THESE PLANS WERE DESIGNED AND ASSEMBLED BY



SMA
Souder, Miller & Associates
JESUS E. AVITIA P.E.
PHONE: (575) 624-2400 FAX: (575) 624-2442

CERTIFICATION:

I, JESUS E. AVITIA, REGISTERED PROFESSIONAL ENGINEER NO. 25777 HEREBY CERTIFY THAT THE FOLLOWING PLANS AND DESIGNS WERE MADE UNDER MY SUPERVISION AND DIRECTION AND THAT SAME IS TRUE AND CORRECT TO THE BEST OF MY KNOWLEDGE AND BELIEF.



N.M.P.E. NO. 25777

Description	Date	Rev #

SOUDER, MILLER & ASSOCIATES
SMA
500 N. Main Street, Suite 504
Roswell, NM 88201-4767
Phone (575) 624-2400 Toll-Free (800) 648-8505 Fax (575) 624-2442
Serving the Southwest & Rocky Mountains
www.soudermiller.com

CURRY COUNTY, CURRY COUNTY, NM
COVER SHEET AND INDEX OF SHEETS
CURRY COUNTY
CURRY ROAD K REHABILITATION PROJECT

Designed JEA	Drawn DAS	Checked DAS
Date: Mar. 2022		
Scale: NTS		
Project No: 7B30851		
Sheet: 1 - 1		

GENERAL NOTES

1. THE 2019 EDITION OF THE NEW MEXICO DEPARTMENT OF TRANSPORTATION STANDARD SPECIFICATIONS FOR HIGHWAY AND BRIDGE CONSTRUCTION, INCLUDING ASSOCIATED SUPPLEMENTAL SPECIFICATIONS, THE NEW MEXICO STANDARD SPECIFICATIONS FOR PUBLIC WORKS CONSTRUCTION, AND THE CURRY COUNTY ROAD POLICY 2017, SHALL GOVERN CONSTRUCTION OF THIS PROJECT. SPECIFIC SECTIONS ARE REFERRED TO BELOW.
2. UTILITIES, BOTH PRIVATE AND PUBLICLY OWNED HAVE NOT BEEN LOCATED OR SHOWN ON THE PLAN SHEET. IT IS THE CONTRACTOR'S RESPONSIBILITY TO CALL FOR UTILITY LOCATES AND FOR COORDINATION WITH UTILITIES. THIS WORK SHALL BE INCLUDED IN THE COST OF THE PROJECT. THE CONTRACTOR IS RESPONSIBLE FOR DETERMINING THE LOCATIONS AND FOR PROTECTION OF ALL UTILITIES DURING CONSTRUCTION. IN THE EVENT THAT THERE ARE CONFLICTING UTILITIES, THE CONTRACTOR SHALL NOTIFY CURRY COUNTY AND THE PROJECT ENGINEER.
3. THE CONTRACTOR SHALL USE WATERING EQUIPMENT FOR DUST POLLUTION ABATEMENT AS REQUIRED. THE CONTRACTOR MAY OBTAIN WATER FOR CONSTRUCTION FROM CURRY COUNTY. THE CONTRACTOR SHALL COORDINATE WITH CURRY COUNTY REGARDING THE LOCATIONS OF FIRE HYDRANTS TO BE USED. THIS WORK SHALL BE CONSIDERED INCIDENTAL TO THE CONSTRUCTION OF THE PROJECT.
4. THE CONTRACTOR MUST PROTECT HIS WORK SO THAT WATER FROM RAINFALL OR STORM EVENTS MINIMIZES CONSTRUCTION DELAYS OR DAMAGE TO COMPLETED WORK AND EXISTING STRUCTURES.
5. ALL MATERIALS AND WORKMANSHIP SHALL CONFORM TO PROJECT SPECIFICATIONS. ALL INSTALLATION DETAILS ARE TYPICAL AND MAY BE CHANGED TO BETTER FIT THE EXISTING LOCAL CONDITIONS UPON DIRECTION OF THE PROJECT MANAGER OR CURRY COUNTY.
6. ITEM NO. 209000 - BLADING AND RESHAPING (MILE) IS FOR THE LINEAR GRADING OF THE ROADSIDE DITCHES FOR POSITIVE DRAINAGE BETWEEN CULVERT PIPES AND EXISTING DRAINAGE FEATURES.
7. ITEM NO. 303120 - BASE COURSE 2" (SQ.YD.) IS SHOWN AS 2" ADDED TO THE MAINLINE TO ENSURE A MINIMUM DEPTH OF 6" FOR THE PROCESSING, PLACING, AND COMPACTING. QUANTITY TO BE ADJUSTED AS NEEDED PER THE PROJECT MANAGER.
8. ITEM NO. 303160 - BASE COURSE 6" (SQ.YD.) IS TO BE USED FOR TURNOUT CONSTRUCTION. EXCAVATION TO SUBGRADE SHALL BE INCLUDED WITH THIS ITEM.

9. THE CONTRACTOR SHALL BE RESPONSIBLE FOR OBTAINING DISPOSAL SITES THAT ARE ENVIRONMENTALLY SUITABLE FOR DISPOSAL OF ITEMS NOT SPECIFIED TO BE SALVAGED. THE CONTRACTOR IS EXPECTED TO ABIDE BY ALL FEDERAL, STATE AND LOCAL LAWS AND REGULATIONS IN OBTAINING THE NECESSARY PERMITS FROM ALL APPLICABLE AGENCIES AND/OR PRIVATE PROPERTY OWNERS. ALL COSTS ASSOCIATED WITH OBTAINING THESE PERMITS SHALL BE INCIDENTAL TO THE COMPLETION OF THE PROJECT AND NO DIRECT MEASUREMENT OR PAYMENT SHALL BE MADE THEREFORE. THE CONTRACTOR SHALL PROVIDE THE PROJECT MANAGER WITH COPIES OF ALL PERTINENT INFORMATION, AGREEMENTS, AND PERMITS RELATED TO DISPOSAL SITE UTILIZED. BORROW MATERIAL, ROCK WASTE, AND VEGETATIVE DEBRIS CANNOT BE PLACED IN WETLANDS, ARROYOS, OR AREAS THAT MAY IMPACT THREATENED OR ENDANGERED SPECIES. ARCHAEOLOGICAL AND ENVIRONMENTAL CLEARANCES MUST BE OBTAINED BEFORE DISPOSAL OR REMOVAL OF WORK BY THE CONTRACTOR.
10. THERE WILL BE NO MEASUREMENT OR PAYMENT FOR ANY ITEM EXCEPT THOSE LISTED IN THE "UNIT PRICE BID PROPOSAL." ALL OTHER ITEMS OF WORK AND MISCELLANEOUS MATERIALS NECESSARY TO COMPLETE THE PROJECT SHALL BE CONSIDERED INCIDENTAL TO THE COMPLETION OF THE PROJECT AND NO DIRECT PAYMENT WILL BE MADE THEREFORE. ESTIMATED QUANTITIES SHOWN IN BID PROPOSAL ARE FOR THE CONTRACTOR'S INFORMATION ONLY. FINAL QUANTITIES TO BE DETERMINED BY ACTUAL WORK ACCOMPLISHED UPON COMPLETION OF THE PROJECT. COST OF ITEMS SHOWN IN THE BID PROPOSAL ARE TO INCLUDE ALL MISCELLANEOUS APPURTENANCES THERETO COMPLETE AND IN PLACE AS GENERALLY NOTED IN THE PLANS.
11. ITEM NO. 420000 - DOUBLE PEN CHIP SEAL SHALL BE IN ACCORDANCE WITH THE CURRY COUNTY ROAD POLICY, 2017, SECTION III 6.C. MINIMUM ROAD CONSTRUCTION, NON SUBDIVISION.
12. THE PROJECT HAS NO AUTOCAD DRAWINGS, SURVEY OR GEOTECHNICAL DATA AVAILABLE, DISTANCE IS CALCULATED USING MILE MARKERS AND VEHICLE ODOMETER READINGS.

UTILITIES CONTACT INFORMATION

TELEPHONE:	CENTURY LINK CONTACT: KIM SNIPES (575) 291-5234 512 LLANO ESTACADO CLOVIS, NM. 88101 KIMBERLY.SNIPES1@CENTURYLINK.COM	ELECTRIC:	EXCEL ENERGY CONTACT: ANTHONY EIMEN (575) 769-4237 401 S. NORRIS STREET CLOVIS, NM. 88101 ANTHONY.EIMEN@XCELENERGY.COM
	YUCCA TELECOM CONTACT: MIKE JOINER (575) 226-2255 201 W. SECOND STREET PORTALES, NM. 88130	CABLE TV:	SUDDEN LINK CONTACT: JOSEPH WEBSTER (806) 358-4801 5800 W. 45TH AVENUE AMARILLO, TX. 79109 JOSEPH.WEBSTER@SUDDENLINK.COM
GAS:	NEW MEXICO GAS COMPANY CONTACT: EDWARD ROMERO (575) 763-8412 600 GEORGIA STREET CLOVIS, NM. 88101 EDWARD.ROMERO@NMGCO.COM		




SMA
 Engineering
 Environmental
 Surveying

SOUDER, MILLER & ASSOCIATES
 500 N. Main Street, Suite 504
 Roswell, NM 88201-4767
 Phone (575) 624-2400 Toll-Free (800) 648-8505 Fax (575) 624-2442
 Serving the Southwest & Rocky Mountains
 www.soudermiller.com

CURRY COUNTY, CURRY COUNTY, NM
GENERAL NOTES
 CURRY COUNTY
 CURRY ROAD K REHABILITATION PROJECT

Description	Date	Rev.#

Designed JEA	Drawn DAS	Checked DAS
Date: Mar. 2022		
Scale: NTS		
Project No: 7B30851		
Sheet: 1 - 2		

SUMMARY OF QUANTITIES

B I D A L T E R N A T E N O 1	ITEM NO.	ITEM	UNIT	ROADWAY		CONSTRUCTION SIGNING		CONSTRUCTION ENGINEERING		PROJECT TOTAL	
				ESTIMATE	FINAL	ESTIMATE	FINAL	ESTIMATE	FINAL	ESTIMATE	FINAL
	209000	BLADING AND RESHAPING	MILE	1						1	
	302000	PROCESSING, PLACING AND COMPACTING EXISTING SURFACE	SQ.YD.	19,000						19000	
	303120	BASE COURSE 2"	SQ.YD.	17,500						17500	
	407000	ASPHALT MATERIAL FOR TACK COAT	TON	8						8	
	408100	PRIME COAT MATERIAL	TON	75						75	
	414140	COLD MILLING (ASPHALT) 4"	SQ.YD.	23,400						23400	
	423283	HMA SP IV COMPLETE	TON	7,020						7020	
	603281	SWPPP PLAN PREPARATION AND MAINTENANCE	L.S.					1		LS	
	618000	TRAFFIC CONTROL MANAGEMENT	L.S.					1		LS	
	618011	PUBLIC AWARENESS	ALLOW	1						ALLOW	
	621000	MOBILIZATION	L.S.	1						LS	
	702810	TRAFFIC CONTROL DEVICES FOR CONSTRUCTION	L.S.			1				LS	
	801000	CONSTRUCTION STAKING BY THE CONTRACTOR	L.S.	1						LS	
	902001	TESTING ALLOWANCE	ALLOW					1		ALLOW	
	704000	RETROREFLECTORIZED PAINTED MARKINGS 4"	LIN.FT.	83,200						83200	
B I D A L T E R N A T E N O 2	207000	SUBGRADE PREPARATION	SQ.YD.	500						500	
	209000	BLADING AND RESHAPING	MILE	1						1	
	302000	PROCESSING, PLACING AND COMPACTING EXISTING SURFACE	SQ.YD.	19,400						19400	
	303120	BASE COURSE 2"	SQ.YD.	17,700						17700	
	303160	BASE COURSE 6"	SQ.YD.	500						500	
	407000	ASPHALT MATERIAL FOR TACK COAT	TON	8						8	
	408100	PRIME COAT MATERIAL	TON	77						77	
	414140	COLD MILLING (ASPHALT) 4"	SQ.YD.	23,400						23400	
	420000	DOUBLE PEN CHIP SEAL	SQ.YD.	17,410						17410	
	423283	HMA SP IV COMPLETE	TON	5,190						5190	
	603281	SWPPP PLAN PREPARATION AND MAINTENANCE	L.S.						1		LS
	618000	TRAFFIC CONTROL MANAGEMENT	L.S.						1		LS
	618011	PUBLIC AWARENESS	ALLOW	1						ALLOW	
	621000	MOBILIZATION	L.S.	1						LS	
	702810	TRAFFIC CONTROL DEVICES FOR CONSTRUCTION	L.S.			1				LS	
801000	CONSTRUCTION STAKING BY THE CONTRACTOR	L.S.	1						LS		
902001	TESTING ALLOWANCE	ALLOW						1		ALLOW	
704000	RETROREFLECTORIZED PAINTED MARKINGS 4"	LIN.FT.	83,200							83200	

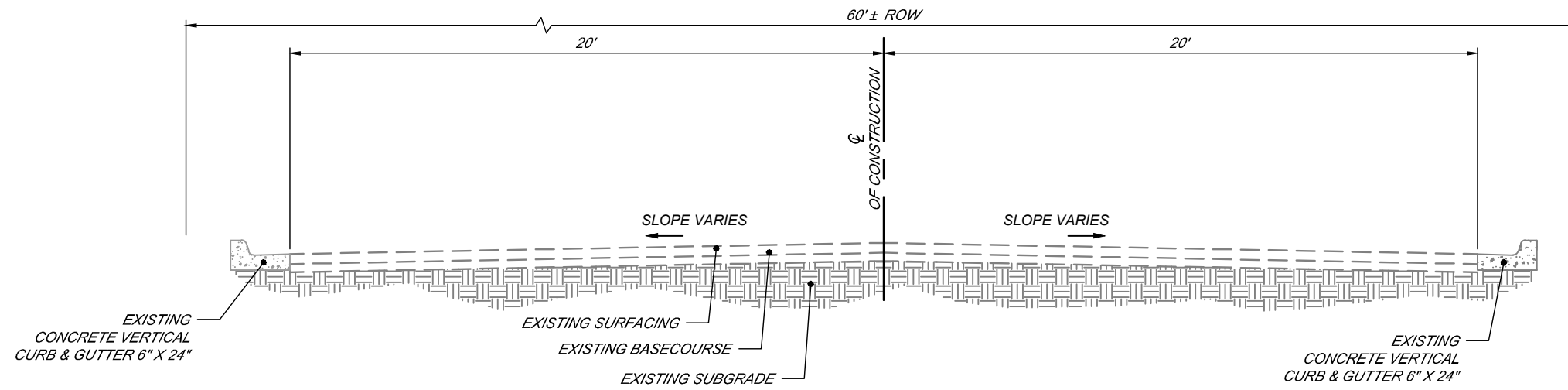

SMA
 Engineering
 Environmental
 Surveying

SOUDER, MILLER & ASSOCIATES
 500 N. Main Street, Suite 504
 Roswell, NM 88201-4767
 Phone (575) 624-2400 Toll-Free (800) 648-8505 Fax (575) 624-2442
 Serving the Southwest & Rocky Mountains
 www.soudermiller.com

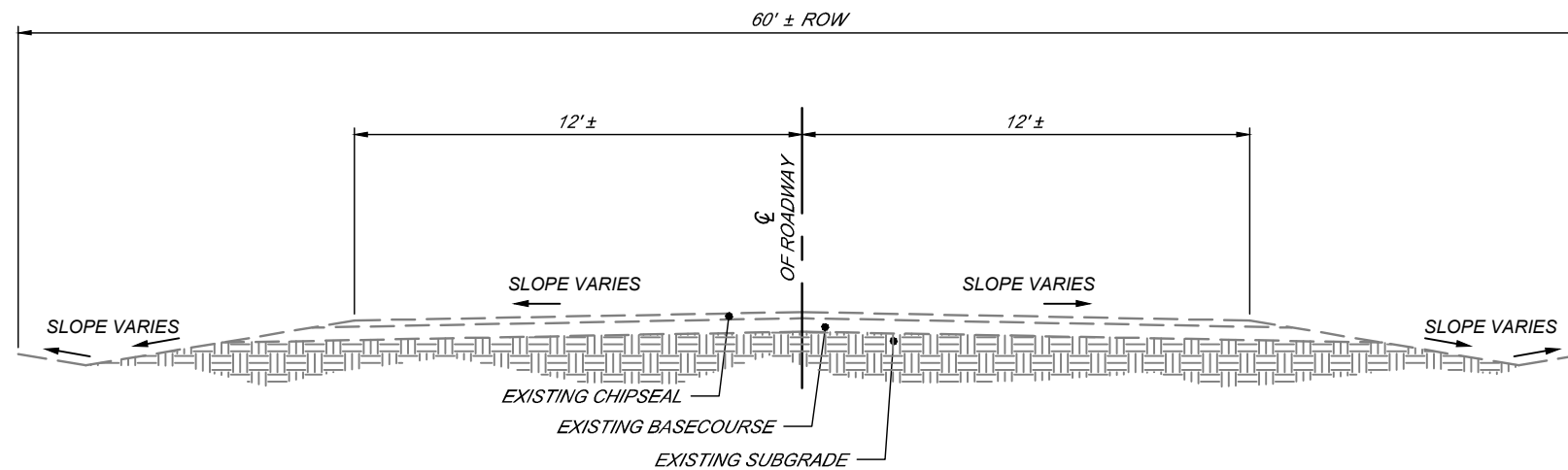
CURRY COUNTY, CURRY COUNTY, NM
SUMMARY OF QUANTITIES
 CURRY COUNTY
 CURRY ROAD K REHABILITATION PROJECT



Designed JEA	Drawn DAS	Checked DAS
Date: Mar. 2022		
Scale: NTS		
Project No: 7B30851		
Sheet: 1 - 3		



1 EXISTING TYPICAL SECTION CURRY ROAD K
 1 SCALE: 1"=5' FROM CURRY ROAD 8 TO W. BRADY AVE



1 EXISTING TYPICAL SECTION CURRY ROAD K
 1 SCALE: 1"=5' FROM CURRY ROAD 7 TO CURRY ROAD 8

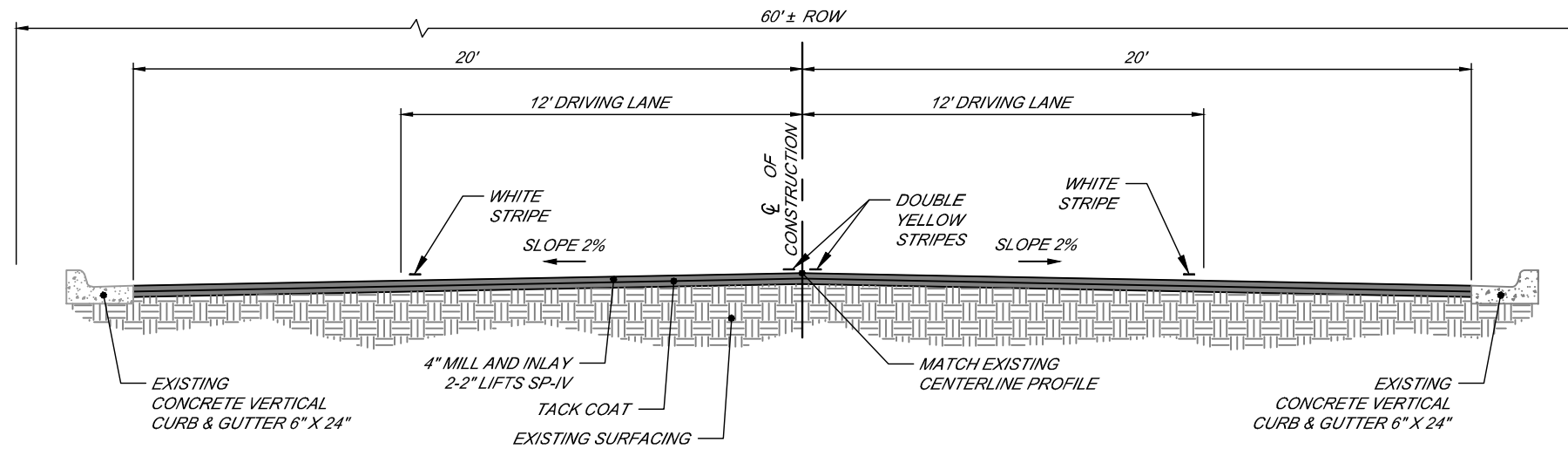


Rev #	Date	Description

SOUDER, MILLER & ASSOCIATES
 500 N. Main Street, Suite 504
 Roswell, NM 88201-4767
 Phone (575) 624-2400 Toll-Free (800) 648-8505 Fax (575) 624-2442
 Serving the Southwest & Rocky Mountains
 www.soudermiller.com

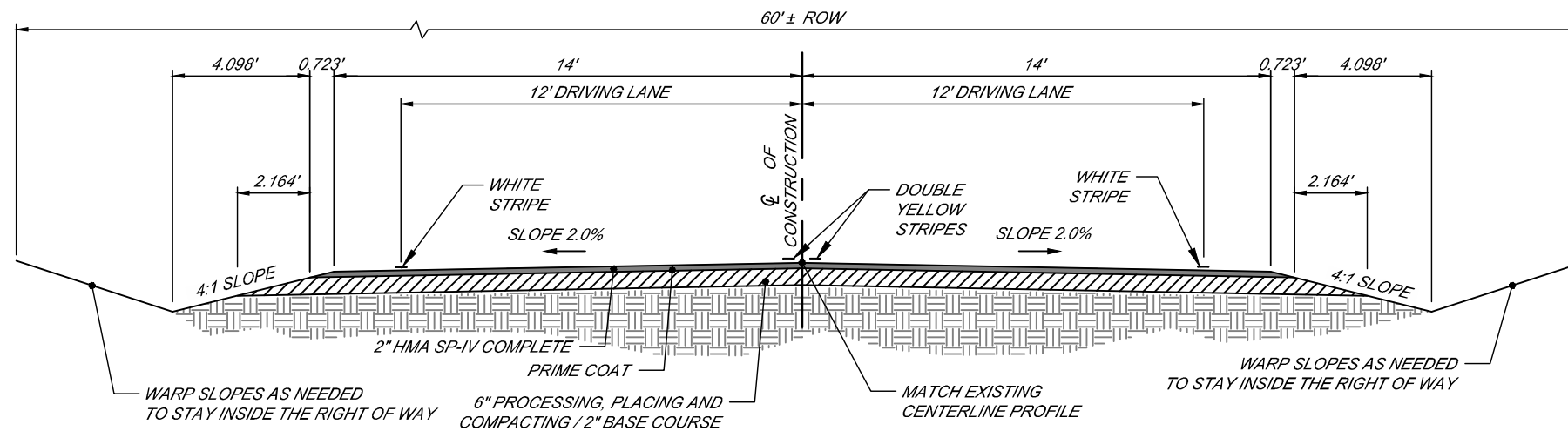
CURRY COUNTY, CURRY COUNTY, NM
 EXISTING TYPICAL SECTION
 CURRY COUNTY
 CURRY ROAD K REHABILITATION PROJECT

Designed JEA	Drawn DAS	Checked DAS
Date: Mar. 2022		
Scale: 1"=5'		
Project No: 7B30851		
Sheet: 2 - 1		



2 TYPICAL SECTION B - CURRY ROAD K - BID ALTERNATE NO. 1
 2 SCALE: 1"=5' STA. 52+50.00 TO STA. 105+01.50

TRANSITION FROM TYPICAL "A" TO TYPICAL "B" FROM STA. 50+00.0 TO STA. 52+50.00



1 TYPICAL SECTION A - CURRY ROAD K - BID ALTERNATE NO. 1
 2 SCALE: 1"=5' STA. 1+10.00 TO STA. 50+00.00

ROADWAY WIDTH WILL VARY AT THE BOP AROUND THE FILLETS, CONTRACTOR SHALL MAKE THE NECESSARY ADJUSTMENTS TO THE ROADSIDE DITCHES TO PROVIDE POSITIVE DRAINAGE AS NECESSARY.

BID ALTERNATE NO. 1



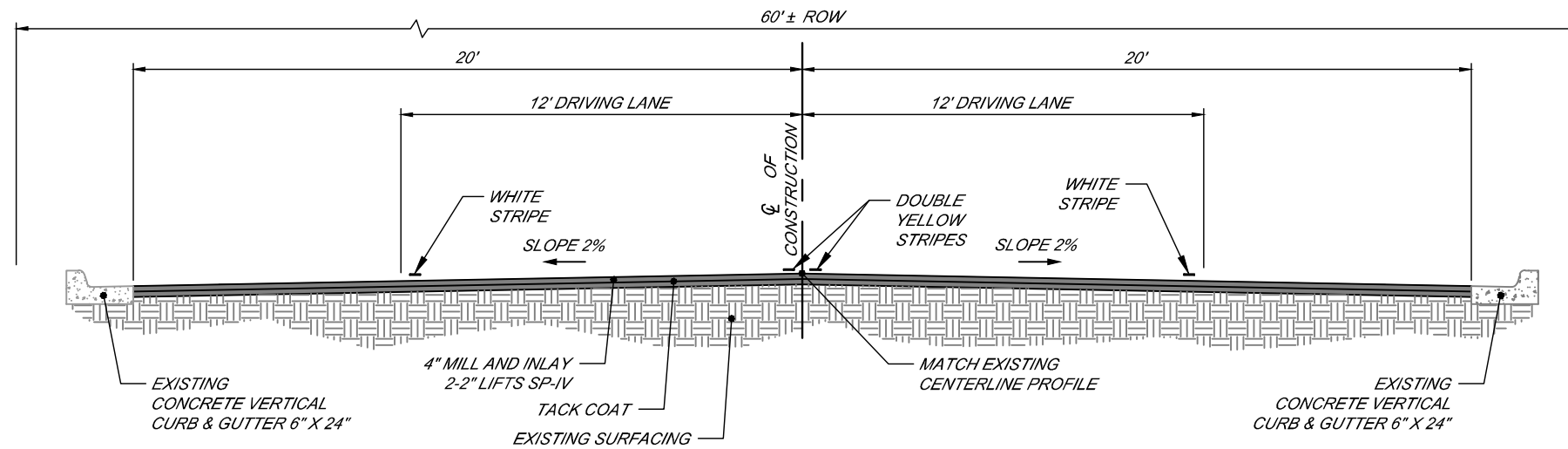
Rev #	Date	Description

SOUDEY, MILLER & ASSOCIATES
 500 N. Main Street, Suite 504
 Roswell, NM 88201-4767
 Phone (575) 624-2400 Toll-Free (800) 648-8505 Fax (575) 624-2442
 Serving the Southwest & Rocky Mountains
 www.soudermiller.com



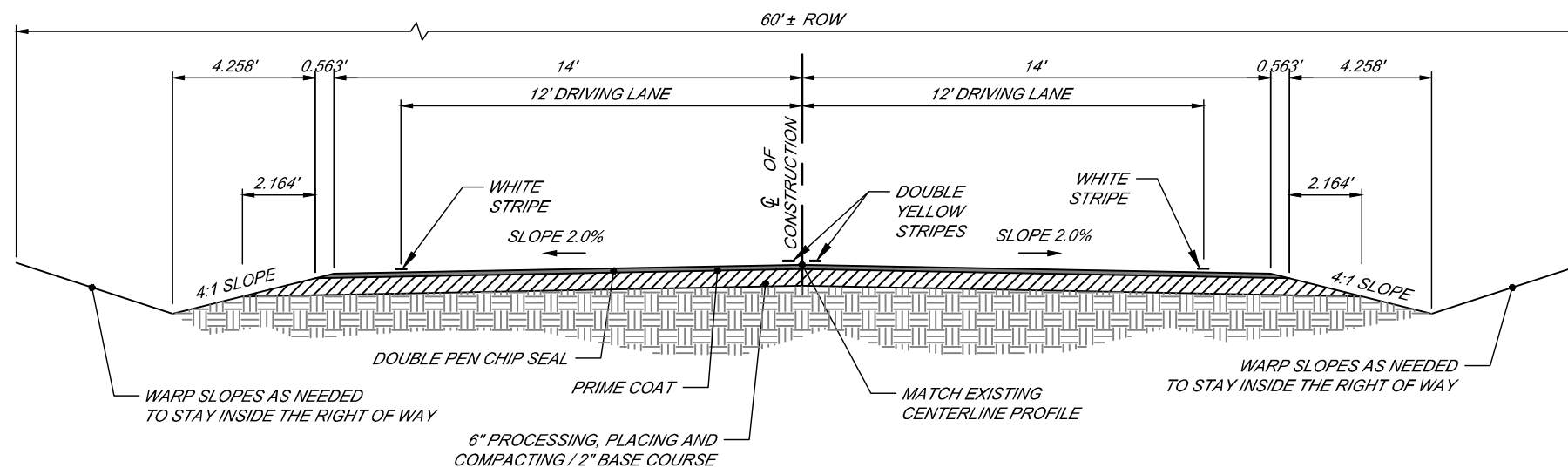
CURRY COUNTY, CURRY COUNTY, NM
 PROPOSED TYPICAL SECTIONS-BID ALTERNATE NO.1
 CURRY COUNTY
 CURRY ROAD K REHABILITATION PROJECT

Designed JEA	Drawn DAS	Checked DAS
Date: Mar. 2022		
Scale: 1"=5'		
Project No: 7B30851		
Sheet: 2 - 2		



2 **TYPICAL SECTION D - CURRY ROAD K - BID ALTERNATE NO.2**
 3 SCALE: 1"=5' STA. 52+50.00 TO STA. 105+01.50

TRANSITION FROM TYPICAL "C" TO TYPICAL "D" FROM STA. 50+00.0 TO STA. 52+50.00



3 **TYPICAL SECTION C - CURRY ROAD K - BID ALTERNATE NO.2**
 3 SCALE: 1"=5' STA. 1+10.00 TO STA. 50+00.00

ROADWAY WIDTH WILL VARY AT THE BOP AROUND THE FILLETS, CONTRACTOR SHALL MAKE THE NECESSARY ADJUSTMENTS TO THE ROADSIDE DITCHES TO PROVIDE POSITIVE DRAINAGE AS NECESSARY.

BID ALTERNATE NO.2

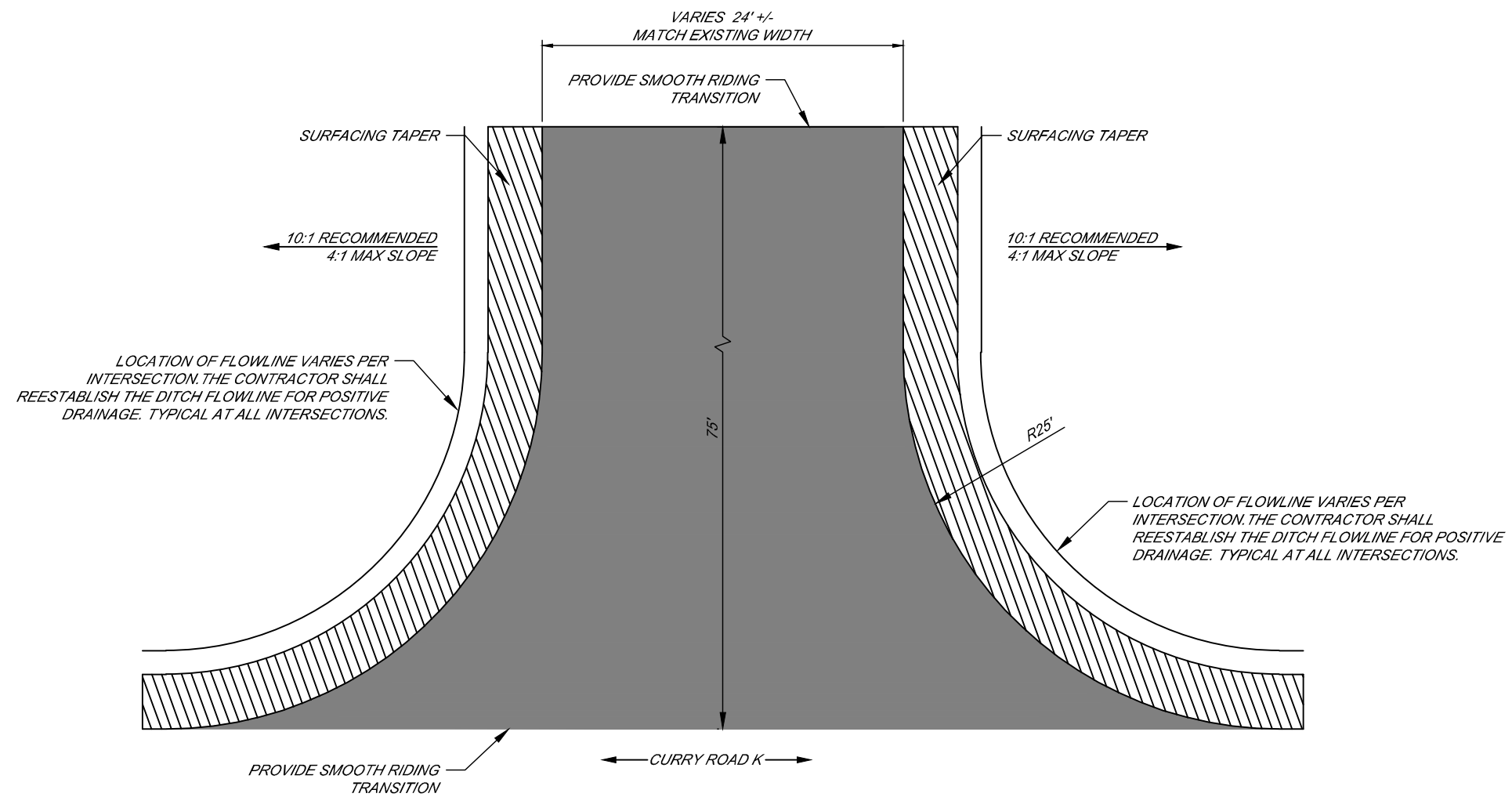


Rev #	Date	Description

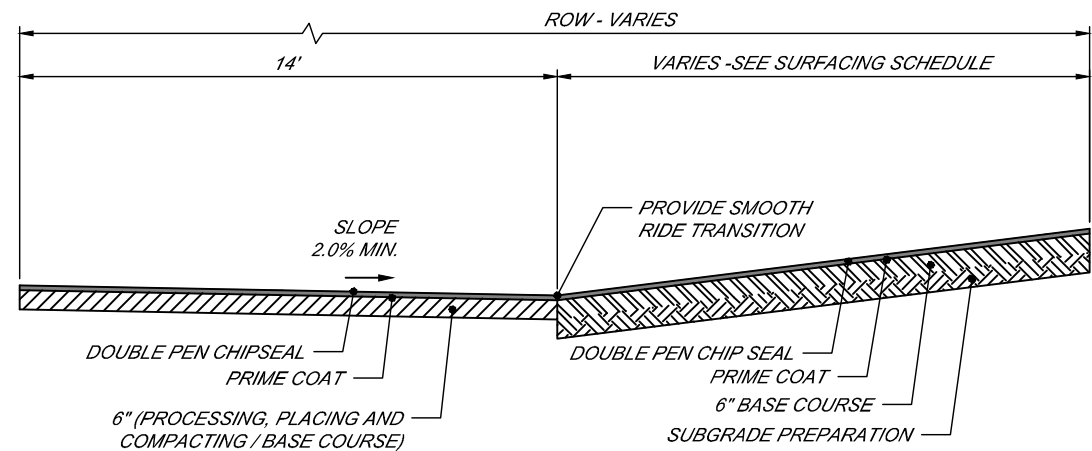
SOUDER, MILLER & ASSOCIATES
 500 N. Main Street, Suite 504
 Roswell, NM 88201-4767
 Phone (575) 624-2400 Toll-Free (800) 648-8505 Fax (575) 624-2442
 Serving the Southwest & Rocky Mountains
 www.soudermiller.com

CURRY COUNTY, CURRY COUNTY, NM
 PROPOSED TYPICAL SECTIONS-BID ALTERNATE NO.2
 CURRY COUNTY
 CURRY ROAD K REHABILITATION PROJECT

Designed JEA	Drawn DAS	Checked DAS
Date: Mar. 2022		
Scale: 1"=5'		
Project No: 7B30851		
Sheet: 2 - 3		



1 INTERSECTION CURRY ROAD 8
4 SCALE: 1"=10'



1 TYPICAL SECTION E - TURNOUT TIE-IN TO MAIN LINE
4 SCALE: 1"=5' SEE TURNOUT LIST FOR ADDITIONAL INFORMATION



Rev #	Date	Description

SMA
Engineering
Environmental
Surveying

SOUDEY, MILLER & ASSOCIATES
500 N. Main Street, Suite 504
Roswell, NM 88201-4767
Phone (575) 624-2400 Toll-Free (800) 648-8505 Fax (575) 624-2442
Serving the Southwest & Rocky Mountains
www.soudermiller.com

CURRY COUNTY, CURRY COUNTY, NM
INTERSECTION RECONSTRUCTION DETAIL
CURRY COUNTY
CURRY ROAD K REHABILITATION PROJECT

Designed JEA	Drawn DAS	Checked DAS
Date: Mar. 2022		
Scale: 1"=10'		
Project No: 7B30851		
Sheet: 2 - 4		

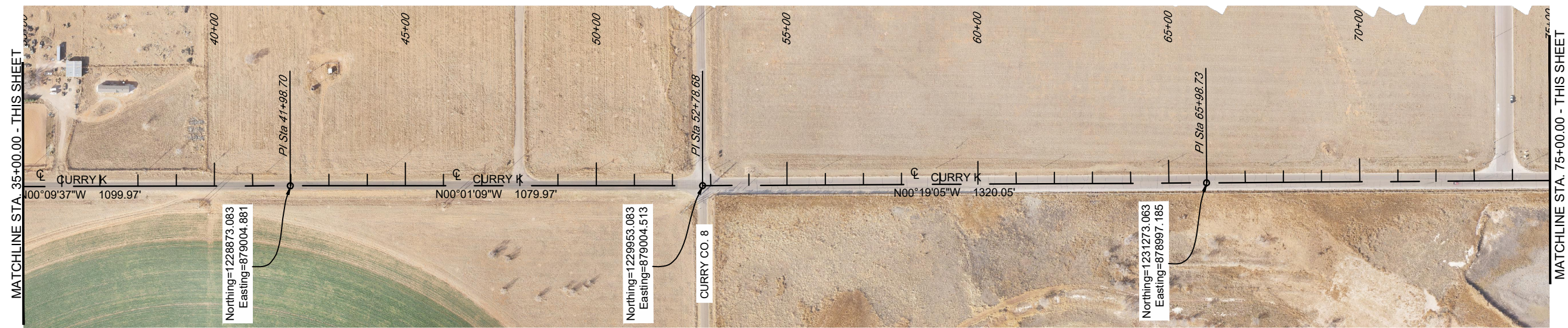
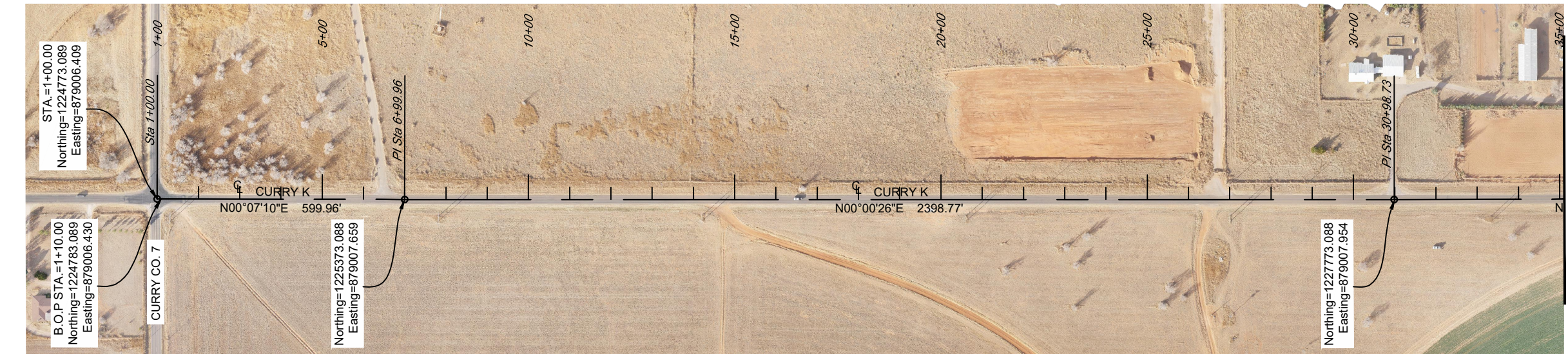
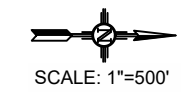
SURFACING SCHEDULE				ITEM No. 207000				303120				303160				302000				414140				423283				# 64-28 PG ASPHALT MAT'L		407000				408100				420000			
				SUBGRADE PREPARATION				BASE COURSE 2"				BASE COURSE 6"				PROCESSING, PLACING AND COMPACTING EXISTING SURFACING				COLD MILLING (ASPHALT) 4"				HMA SP IV COMPLETE						ASPHALT MATERIAL FOR TACK COAT				PRIME COAT MATERIAL				DOUBLE PEN CHIP SEAL			
STATION TO STATION	TYPICAL SECTION	DESCRIPTION / LOCATION	LENGTH	AVG. WIDTH	AVG. WIDTH	AREA	AVG. WIDTH	DEPTH	AREA	AVG. WIDTH	DEPTH	AREA	AVG. WIDTH	DEPTH	AREA	AREA	AVG. WIDTH	DEPTH	AREA	AVG. WIDTH	DEPTH	AREA	WT.	WT.	AVG. WIDTH	AREA	WT.	AVG. WIDTH	AREA	WT.	AVG. WIDTH	AREA	WT.	AVG. WIDTH	AREA						
			FT.	FT.	FT.	SQ.YD.	FT.	IN.	SQ.YD.	FT.	FT.	SQ.YD.	FT.	IN.	SQ.FT.	SQ.YD.	FT.	IN.	SQ.YD.	FT.	IN.	SQ.YD.	FT.	IN.	SQ.YD.	TON	TON	FT.	SQ.YD.	TON	FT.	SQ.YD.	TON	FT.	SQ.YD.						
ALTERNATE NO.1																																									
1+10.00	50+00.00	A	CR K FROM CR 7 TO TRANSITION	4890	28				30.38	2.00	16503.75						33.08	6.00	161761.20	17973.47																					
50+00.00	52+50.00	Transition	CR K TRANSITION	250	30				32.38	2.00	899.31						35.08	6.00	8770.00	974.44																					
52+50.00	105+01.50	B	CR K FROM CR 8 TO BRADY AVE.	5252	40																		40.00	4.00	23340.00	5186.67	306.01	40.00	23340.00	7.78	40.00	23340.00	43.76								
TOTAL:								17403.06								18947.91				23340.00				7014.05		413.83				7.78				74.60							
USE:								17500								19000				23400				7020		8				75.0											
ALTERNATE NO.2																																									
1+10.00	50+00.00	C	CR K FROM CR 7 TO TRANSITION	4890	28				30.00	2.00	16300.00						32.76	6.00	160196.40	17799.60																					
50+00.00	52+50.00	Transition	CR K TRANSITION	250	30				32.00	2.00	888.89						34.76	6.00	8690.00	965.56																					
52+50.00	105+01.50	D	CR K FROM CR 8 TO BRADY AVE.	5252	40																		40.00	4.00	23340.00	5186.67	306.01	40.00	23340.00	7.78	40.00	23340.00	43.76								
		C	INTERSECTION CURRY ROAD 8	150	24				26.00	2.00	433.33						28.76	6.00	4314.00	479.33																					
			4 -25' RADIUS FILLETS - AT INTERSECTION																																						
6+54.00		E	DRIVEWAY ACCESS TO HOUSE (1) (LT)	50	16	16.00	88.89				16.00	6.00	88.89																												
26+69.00		E	DRIVEWAY ACCESS TO HOUSE (2) (LT)	50	16	16.00	88.89				16.00	6.00	88.89																												
30+98.73		E	DRIVEWAY ACCESS TO HOUSE (3) (LT)	50	16	16.00	88.89				16.00	6.00	88.89																												
35+99.00		E	DRIVEWAY ACCESS TO HOUSE (4) (LT)	50	16	16.00	88.89				16.00	6.00	88.89																												
48+00.00		E	ACCESS TO WAREHOUSE (5) (LT)	50	20	20.00	111.11				20.00	6.00	111.11																												
TOTAL:				466.67				17622.22				466.67				19370.49				23340.00				5186.67		306.01				7.78				76.39				17403.76			
USE:				500				17700				500				19400				23400				5190		8				77.0				17410.0							

ESTIMATED SURFACING FACTORS							
ITEM	64-28 PERFORMANCE GRADED ASPHALT MATERIAL	70-28+ PERFORMANCE GRADED ASPHALT MATERIAL	UNIT WEIGHT	HYDRATED LIME	TACK SECT. 407	PRIME SECT. 408	UNIT WEIGHT
	(BY WEIGHT OF TOTAL MIX)	(BY WEIGHT OF TOTAL MIX)	LBS./ CU. YD.	(BY WEIGHT OF TOTAL MIX)	GAL./ SQ.YD.	GAL./ SQ.YD.	GAL./ TON
	HMA SP IV	5.90% *		4000 *	1.0% *		
WMA SP IV	5.90% *		4000 *	1.0% *			
PRIME COAT MATERIAL					0.45 **		240.00
ASPHALT MATERIAL FOR TACK COAT					0.08 **		240.00
BASE COURSE			3960 *				

PERMANENT STRIPING					704000	
DESCRIPTION	STATION TO STATION		OFFSET	LENGTH	RETROREFLECTORIZED PAINTED MARKINGS 4"	
	STA. TO STA.	-			4" SOLID WHITE	4" SOLID YELLOW
				FT	LIN.FT.	LIN.FT.
SOLID WHITE STRIPE	1+10.00	105+01.50	VAR	10392	10392	
SOLID YELLOW STRIPE	1+10.00	105+01.50	VAR	10392		10392
SOLID YELLOW STRIPE	1+10.00	105+01.50	VAR	10392		10392
SOLID WHITE STRIPE	1+10.00	105+01.50	VAR	10392	10392	
SUBTOTAL:					20783	20783
X 2 APPLICATIONS:					41566	41566
PROJECT TOTAL					83132	
PROJECT USE					83200	



SOUDER, MILLER & ASSOCIATES 500 N. Main Street, Suite 504 Roswell, NM 88201-4767 Phone (575) 624-2400 Toll-Free (800) 648-8505 Fax (575) 624-2442 Serving the Southwest & Rocky Mountains www.soudermiller.com	Description	
	Date	
	Rev #	
	CURRY COUNTY, CURRY COUNTY, NM SURFACING QUANTITIES CURRY COUNTY CURRY ROAD K REHABILITATION PROJECT	
	Designed JEA	Drawn DAS
Date: Mar. 2022		
Scale: NTS		
Project No: 7B30851		
Sheet: 2 - 5		



NOTE TO CONTRACTOR
 1. AERIAL MAPPING AND LINE DIAGRAM ALIGNMENT SHOWN FOR INFORMATION ONLY. CONTRACTOR TO ESTABLISH CENTERLINE OF CONSTRUCTION IN FIELD ON EXISTING CENTERLINE, BOTH HORIZONTALLY AND VERTICALLY.



Rev #	Date	Description

SOUDER, MILLER & ASSOCIATES
SMA
 Engineering
 Environmental
 Surveying
 500 N. Main Street, Suite 504
 Roswell, NM 88201-4767
 Phone (575) 624-2400 Toll-Free (800) 648-8505 Fax (575) 624-2442
 Serving the Southwest & Rocky Mountains
 www.soudermiller.com

CURRY COUNTY, CURRY COUNTY, NM
CR K LINE DIAGRAM
 CURRY COUNTY
CURRY ROAD K REHABILITATION PROJECT

Designed JEA	Drawn DAS	Checked DAS
Date: Mar. 2022		
Scale: 1"=500'		
Project No: 7B30851		
Sheet: 3 - 1		