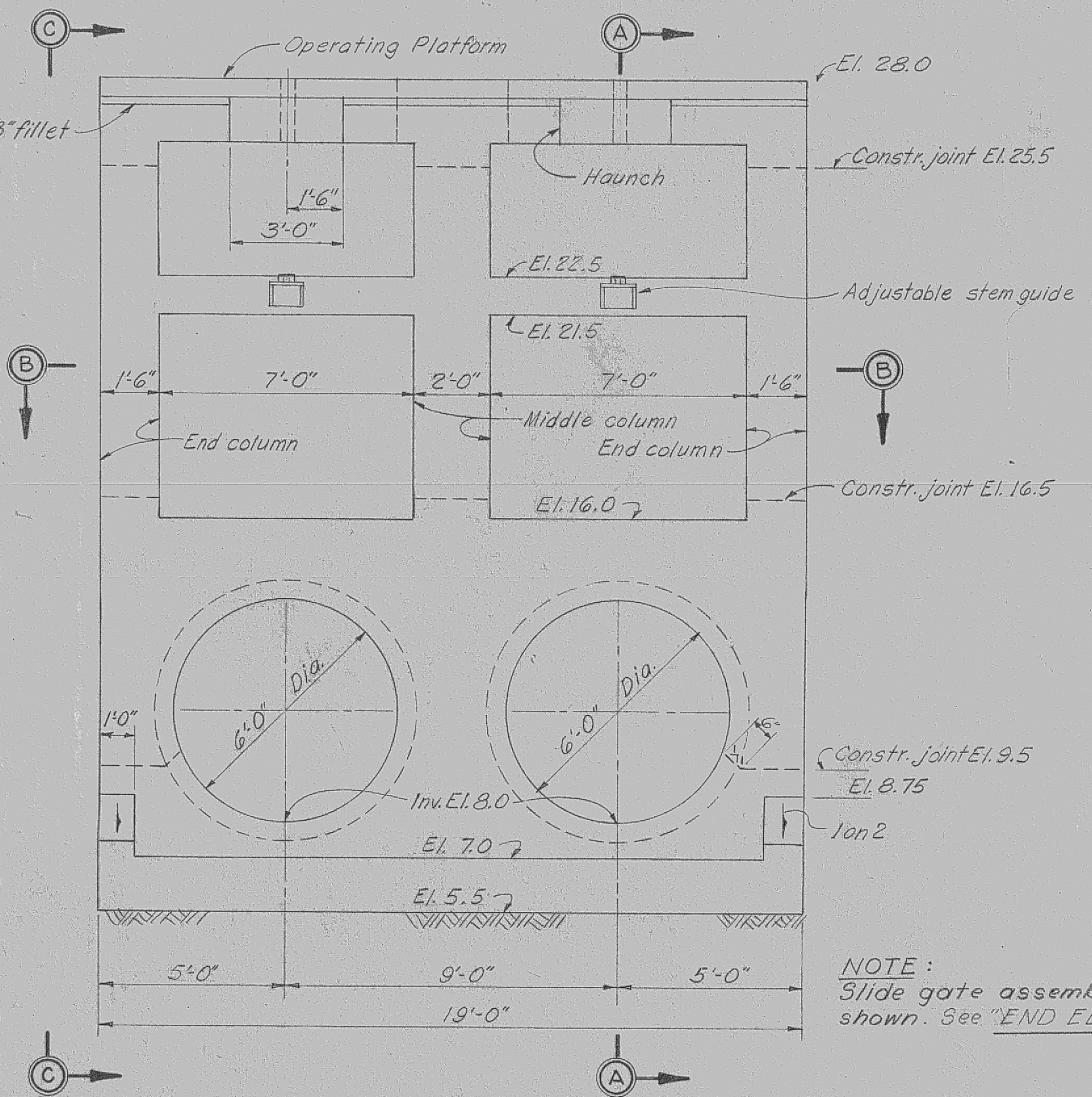
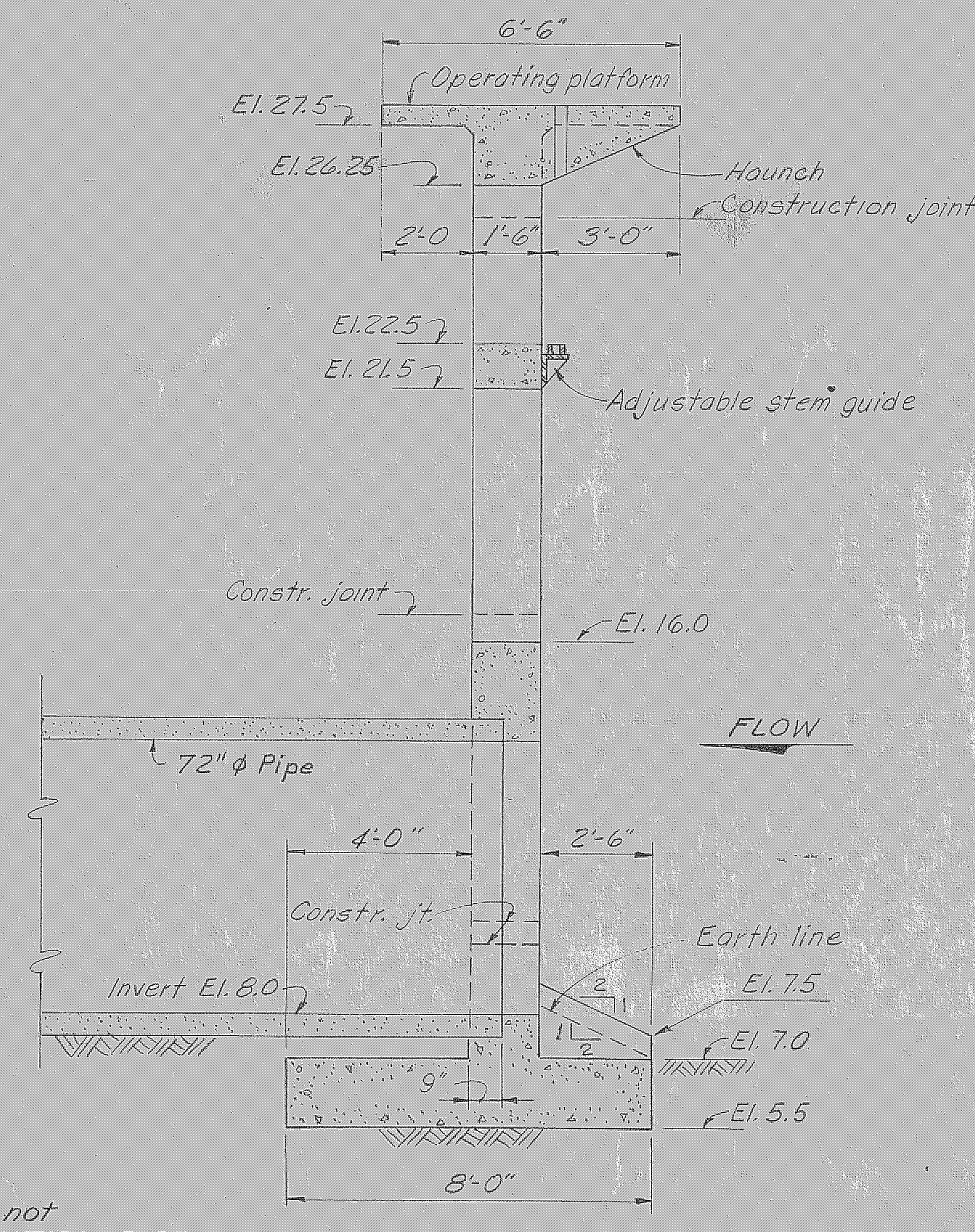


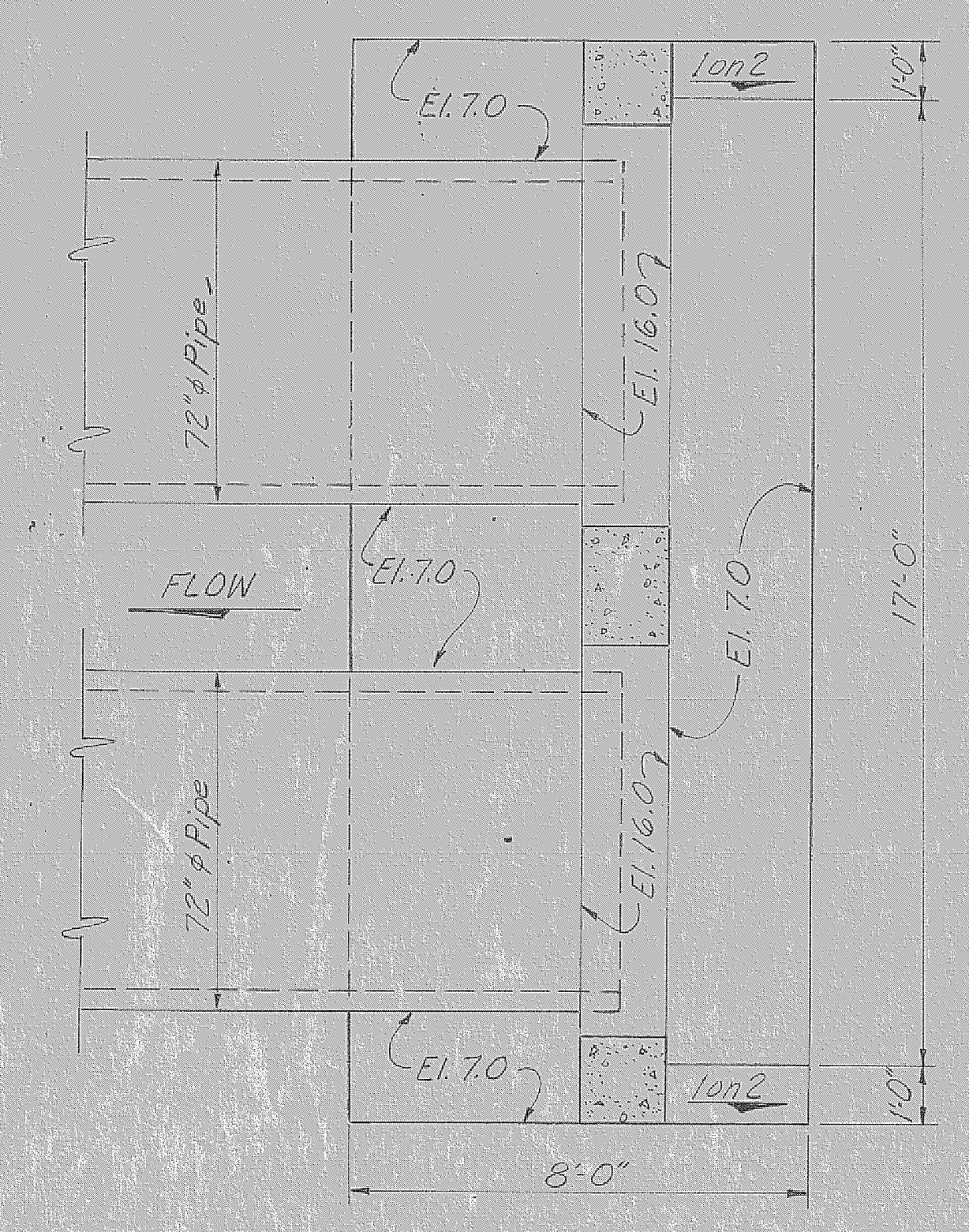
REVISIONS					DATE	APPROVED
NO.	SYM.	ZONE	DESCRIPTION			
1	Δ	B-4	CHANGED 31'-0" TO 32'-0" TO ACCY MOD. TO CONT. 66-109		8-10-66	mmw



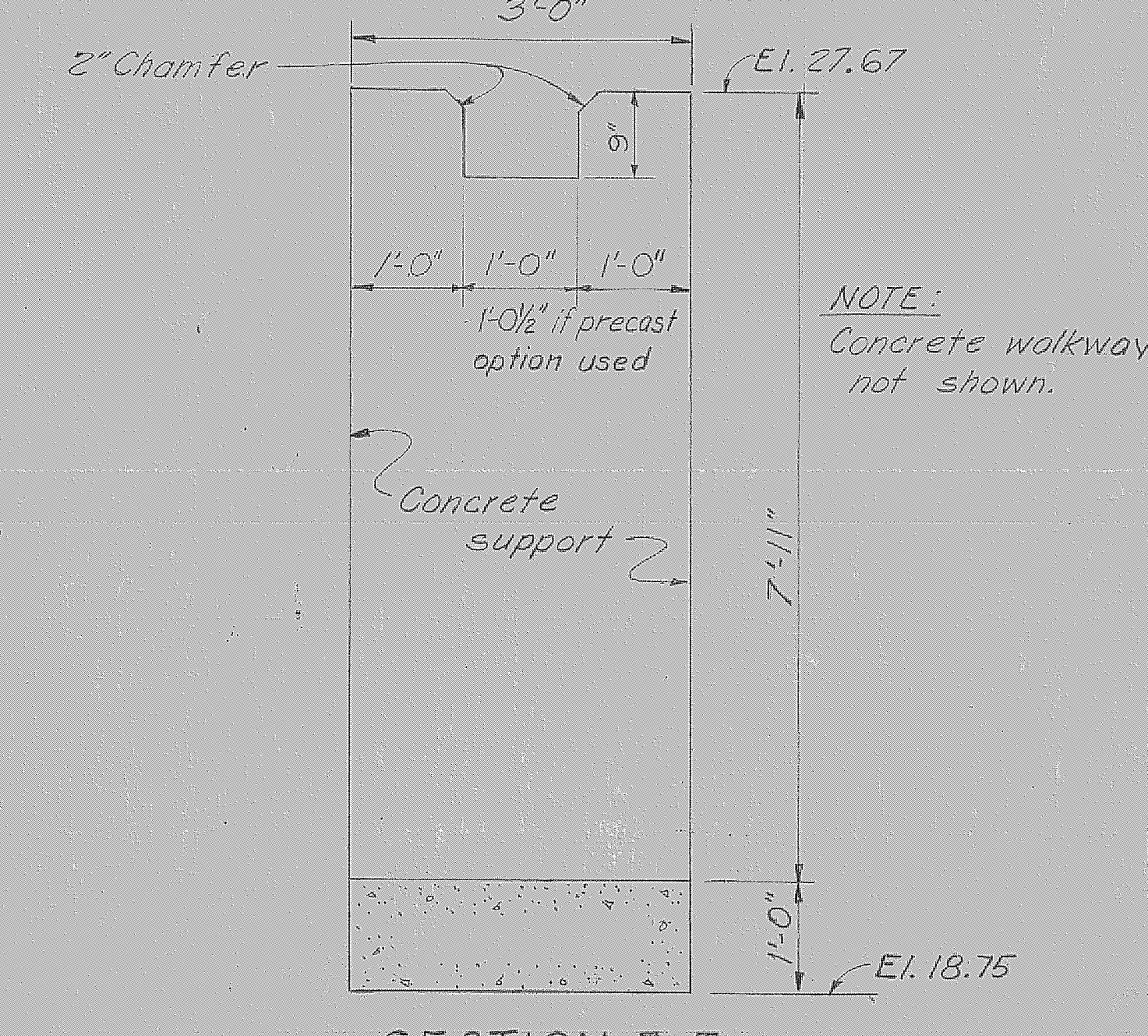
FRONT ELEVATION
SCALE: 3/8"=1'-0"



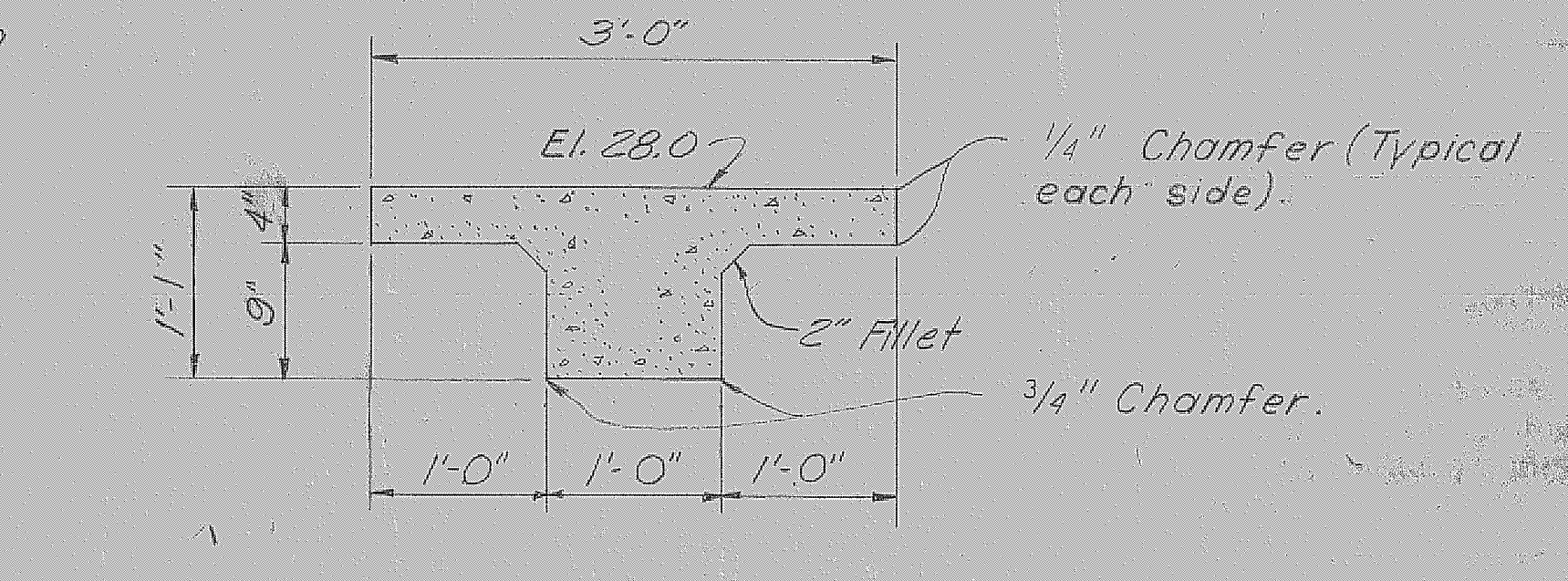
**SECTION A-A
CONCRETE HEADWALL**
SCALE: 3/8"=1'-0"
4 REQUIRED



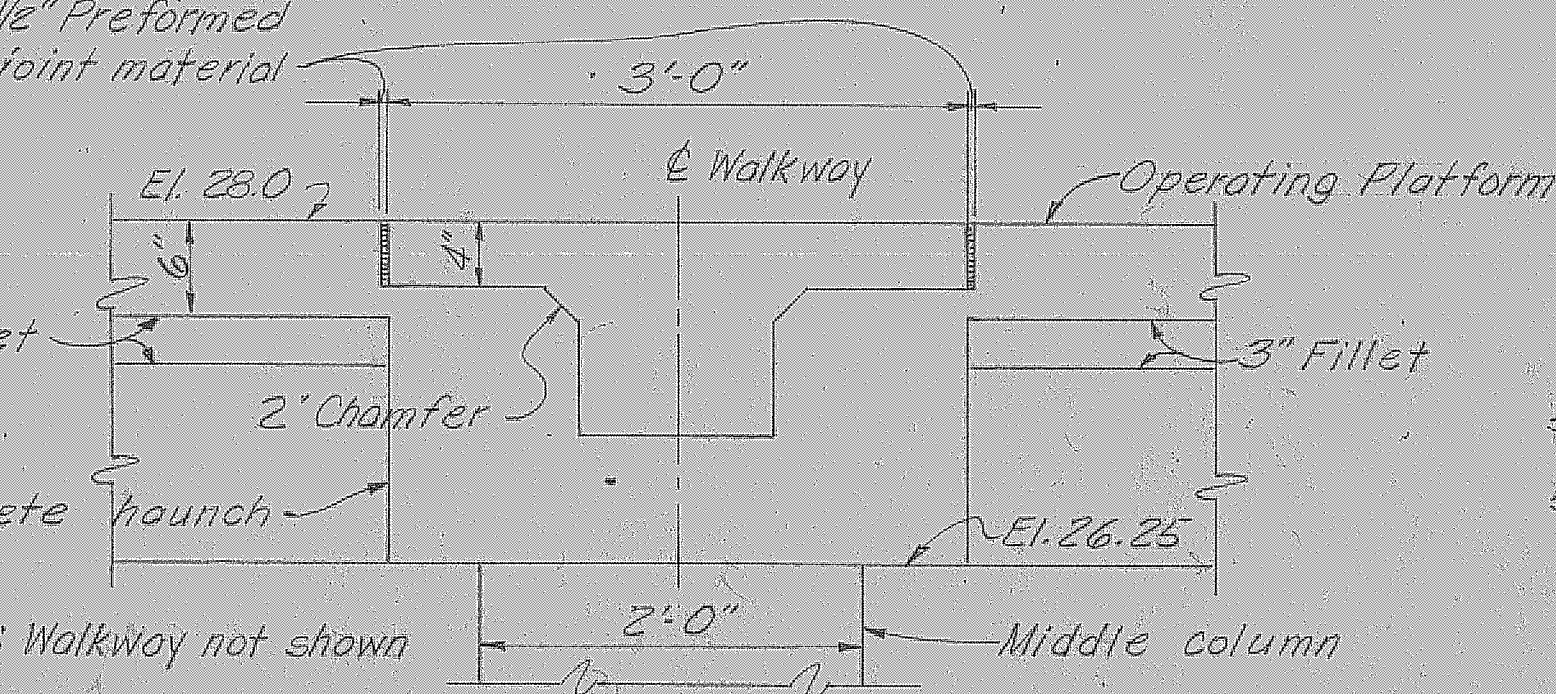
SECTION B-B
SCALE: 3/8"=1'-0"



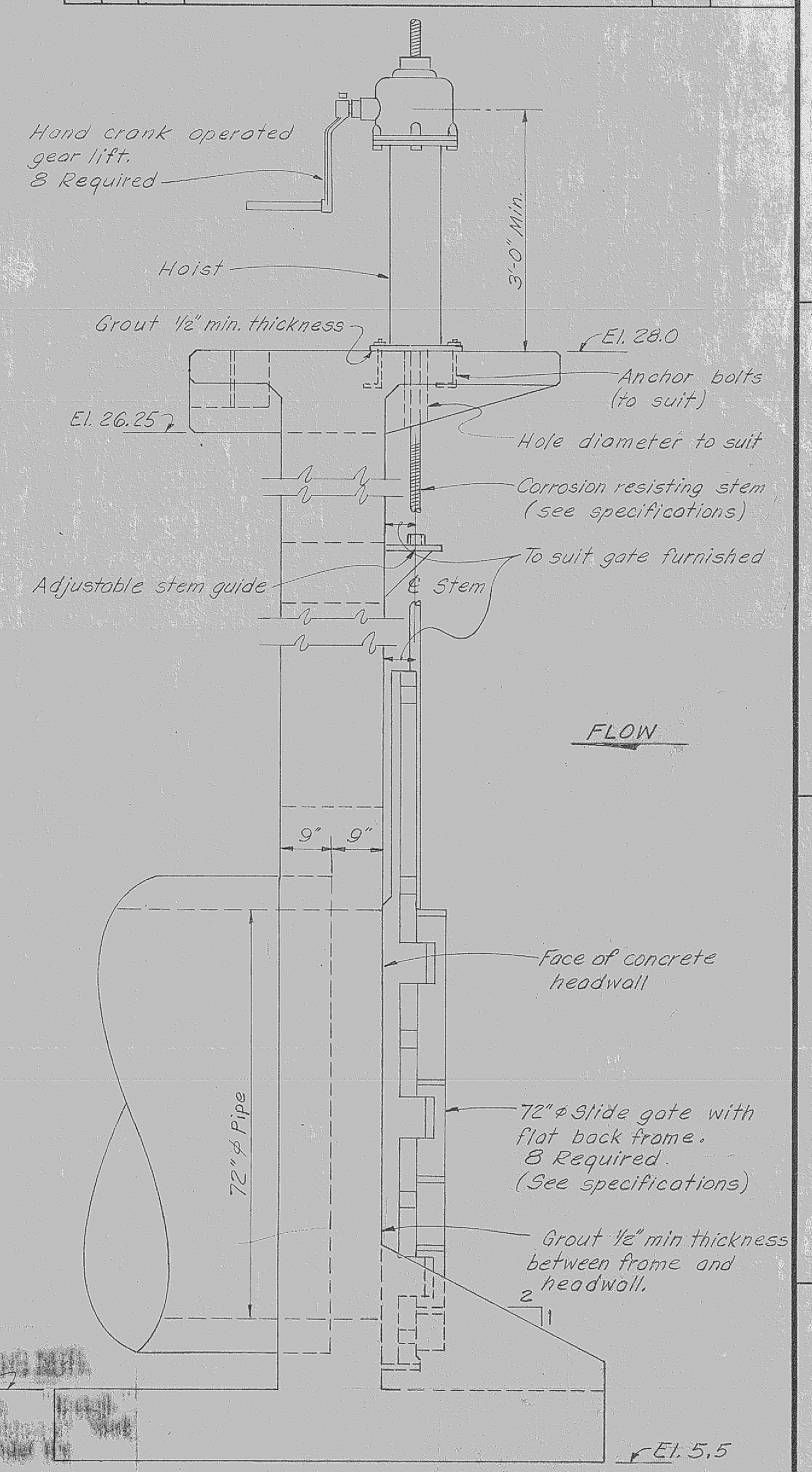
SECTION E-E
SCALE: 3/4"=1'-0"
4 REQUIRED



SECTION F-F
SCALE: 1"=1'-0"



SECTION G-G
SCALE: 1"=1'-0"



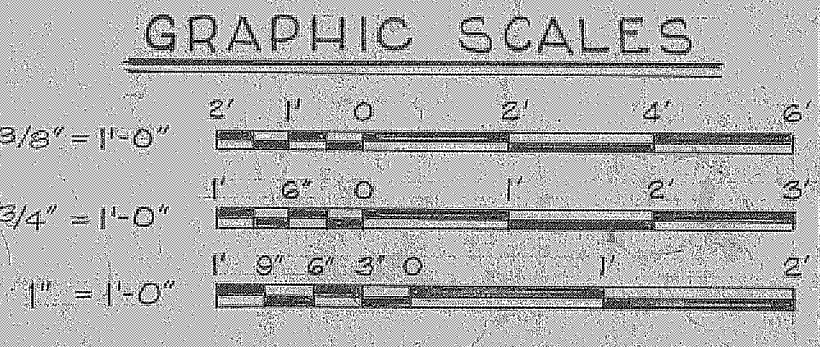
END ELEVATION C-C
NOT TO SCALE

- NOTES:
- 4 HEADWALLS AND WALKWAYS COMPLETE WITH 8" - 72" O. SLIDE GATES AND LIFTS ARE REQUIRED. SEE RESPECTIVE SITE PLANS AND GENERAL PLANS FOR LOCATIONS AND EARTHWORK TO BE PERFORMED.
 - FOR "GENERAL MASONRY AND DESIGN NOTES" SEE SHEET NO. 1

RECORD DRAWING NOTE
"Shall be," "Provide," "Install," "Remove," etc., indicates work was accomplished under the contract.

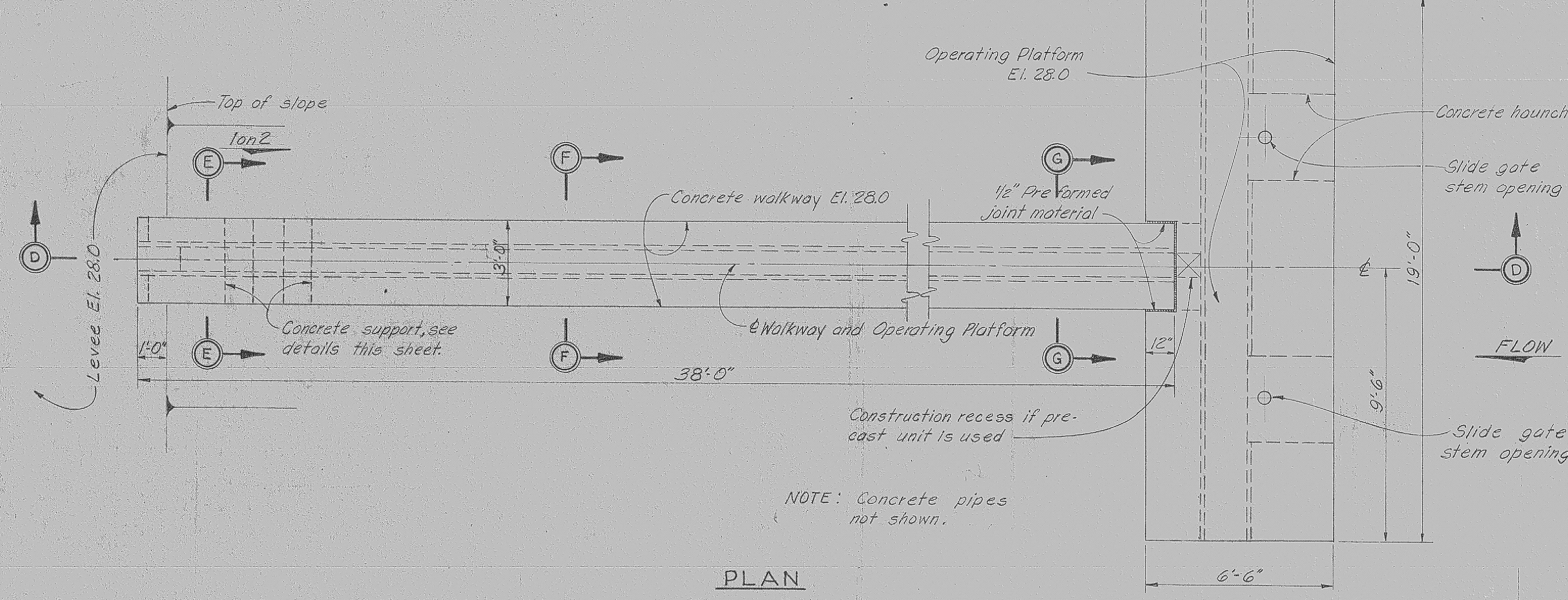
AS BUILT

U. S. ARMY ENGINEER DISTRICT, JACKSONVILLE
CORPS OF ENGINEERS
JACKSONVILLE, FLORIDA
CENTRAL AND SOUTHERN FLORIDA PROJECT
FOR FLOOD CONTROL AND OTHER PURPOSES
CANAL 54, SECTION 2
GATED CULVERT STRUCTURES
MASONRY PLAN AND SECTIONS

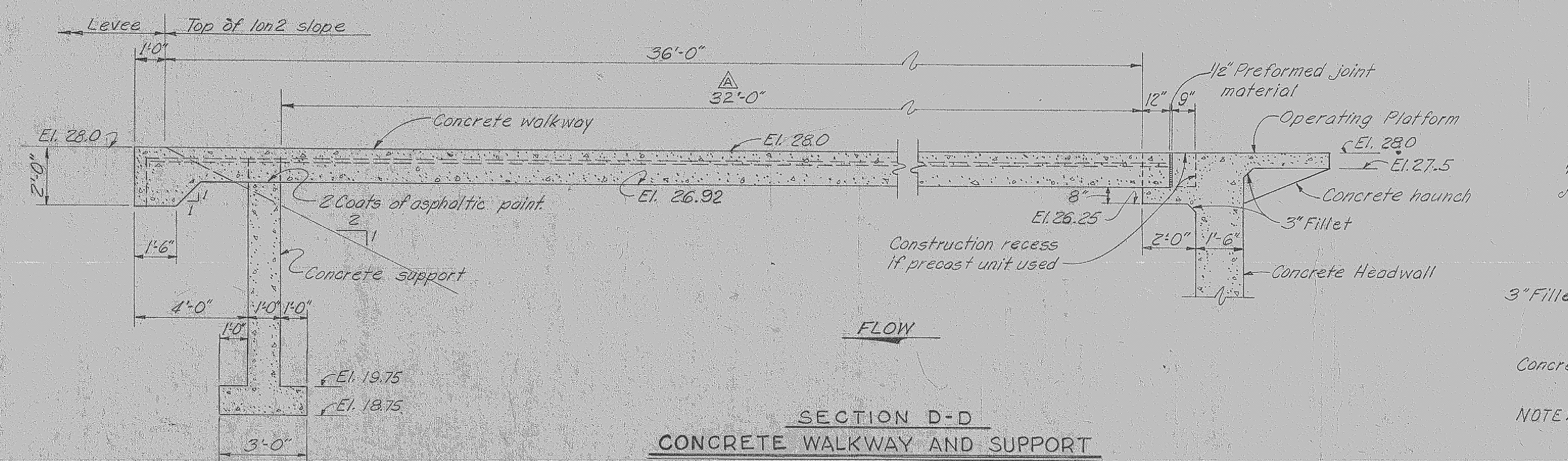


DWN. BY H.H.H.	INV. NO. CIV. ENG. 08-123-66-00	SIZE F	DWG. NO.
CHK. BY A.S.R.	DATED: 28 APRIL 1966	SCALE: AS SHOWN	DATED: APRIL 1966
SHEET 70 OF 72		101 103	

D. O. FILE NO. 496-29-370 496-30-952



PLAN



**SECTION D-D
CONCRETE WALKWAY AND SUPPORT**
SCALE: 3/8"=1'-0"
4 REQUIRED