

# Project Summary

---

<b>Project Name:</b>	Crestview Main St Mobility Implementation Plan SUE
<b>Client Name:</b>	Matrix Design Group, Inc
<b>Client Contact:</b>	Jason Rutt
<b>Project Manager:</b>	Chris Crawford
<b>Project Number:</b>	21.1165.004
<b>Date:</b>	July 20, 2022
<b>Period:</b>	Through July 20, 2022

## Work Accomplished

Ardurra performed SUE services associated with the location and identification of underground utilities within the project boundary areas identified with green boundary boxes in the electronic drawing titled "*Crestview\_draft-UT01 (002) - JCR Comments.pdf*". Ardurra's SUE services included Level A utility verification of existing utilities at select site locations within the proposed path of storm piping. Level B marking of the existing utilities was also performed within the outlined boundaries. Sunshine 811 tickets were obtained on April 21, 2022. Okaloosa Gas informed us at that time they were replacing all gas in the Main St area and project was paused until new mains were installed. Tickets were renewed on June 29, 2022, prior to beginning field services (see page 3). Services were performed using Ground Penetrating Radar (GPR) and vacuum excavation and marked using APWA uniform color-coded paint and flagging. Upon completion of SUE field services, Ardurra coordinated with GCT Surveying to insure accurate data collection of findings.

### UT01 - Sheet 51.

Level B locates were performed in the triangle area of Main St between the intersection of Cedar Ave and US 90, along Cedar Ave and the eastern right-of-way of Wilson St. Utilities located within these boundaries included gas, power, fiber, sewer force main, water and communications (Fig. 1, pg. 4). A conflict with the storm design was identified near US 90 and a Level A locate was performed approximately five feet from the conflict site to avoid traffic interruption, labeled Site D (Fig. 1A, pg. 5). This was determined to be a bundle of 1.5" conduits of different colors. Our experience along US 90 has shown there are generally six (6) of these bundled together; However, due to their close proximity, only four (4) adjacent conduits were verified within the bundle.

The Level A site was located under grass and immediately backfilled after identification using original spoils. The corresponding label was painted on the adjacent concrete surface for use by GCT.

Level B locates were also performed along Main St at the intersection with Pine Ave. Utilities located included power, water, and gravity sewer (Fig. 2, pg. 6). No conflicts with storm design were determined and no Level A was performed at this site.

## **UT02 – Sheet 52.**

Level B locates were performed on Beech Ave at the intersection with Wilson St. Utilities located included communications, power and gas (Fig. 3, pg. 7). The gas line was newly installed via directional drilling below the storm inlet catch basin. No Level A was performed at this location.

Level B locates were performed at the intersection of Main St and Beech Ave. Utilities located included water, power and storm (Fig. 4, pg. 8). Three conflict locations were identified and excavation was performed at the sites labeled G, H and I (Fig. 4A, pgs. 9-10). All conflicts were identified as 2" Cast Iron water lines.

The Level A sites were all located under asphalt pavement of varying thickness (Fig. 8, pg. 17) requiring the use of a cutoff saw and a jackhammer. The asphalt repair was made immediately after identification using QPR asphalt patching and the corresponding labels were painted on the surface for use by GCT.

## **UT03 – Sheet 53.**

Level B locates were performed at the intersection of Main St and Oakdale Ave. Utilities identified during the GPR investigation included gas, power, water storm and communications (Fig. 5, pg. 11). Three (3) conflicts with the storm design were identified and Level A utility verification was performed at sites labeled A, B and E (Figs. 5A, 5B & 5C, pgs. 12-13). Conflict A was identified as an 8" Cast Iron water main. Conflict site B was the newly installed 4" PE gas main and conflict site E was identified as a 6" Cast Iron water main.

The Level A sites were all located under asphalt pavement of varying thickness (4" - 14") requiring the use of a cutoff saw and a jackhammer. The asphalt repair was made immediately after identification using QPR asphalt patching and the corresponding labels were painted on the surface for use by GCT.

## **UT04 – Sheet 54.**

Level B locates were performed at the intersection of Main St and Woodruff Ave. Utilities marked included water, power, storm and an unknown utility (Fig 6, pg. 14). Two storm design conflicts were identified and Level A excavation was performed at one conflict site labeled F (Fig. 6A, pg. 16). This was identified as a 6" Cast Iron water main. The other conflict, the existing 42" RCP storm where design calls for a PR Inlet to be installed, was verified by visual inspection of the manhole access cover. The unknown utility was not identifiable via surface features and was not excavated since it was not in conflict with the storm design.

Level B locates were also performed at the intersection of Wilson St and Woodruff Ave. Utilities marked included gas, power and two unknown utilities (Fig.7, pg. 15). One design conflict was identified and Level A excavation was performed at site labeled C (Fig 7A, pg. 16). This was identified as a 15" VCP, but use was not able to be determined. The other unknown was

possibly sewer or storm, but it was not a conflict utility; Therefore, no Level A was performed and a determination was not able to be reached.

The Level A sites were located under asphalt and/or concrete curbing requiring the use of a cutoff saw and a jackhammer. The concrete repair was made immediately after identification using Quikrete fast-setting concrete mix and the corresponding label was painted on the surface for use by GCT.

### Sunshine 811 Tickets

#### Original Tickets

111208054	111207977	111207915
111208043	111207960	111208070
111208013	111207942	111207891
111207987	111207926	111207868

#### Renewal Tickets

180200456	180200508	180200472
180200465	180200573	180200479
180200496	180200531	180200503
	180200486	

### Utilities Verified

Site	Utility	Ground Level Depth
A	8" CI Water	27"
B	4" Yellow PE Gas	60"
C	15" VCP Unknow	28.5"
D	1.5" Orange Comm Bundle	68"
E	6" CI Water	45.5"
F	6" CI Water	40"
G	2" CI Water	54"
H	2" CI Water	37.5"
I	2" CI Water	34"
J	42" RCP Storm	36"

Figure 1. UT01 Field Sketch - Part 1

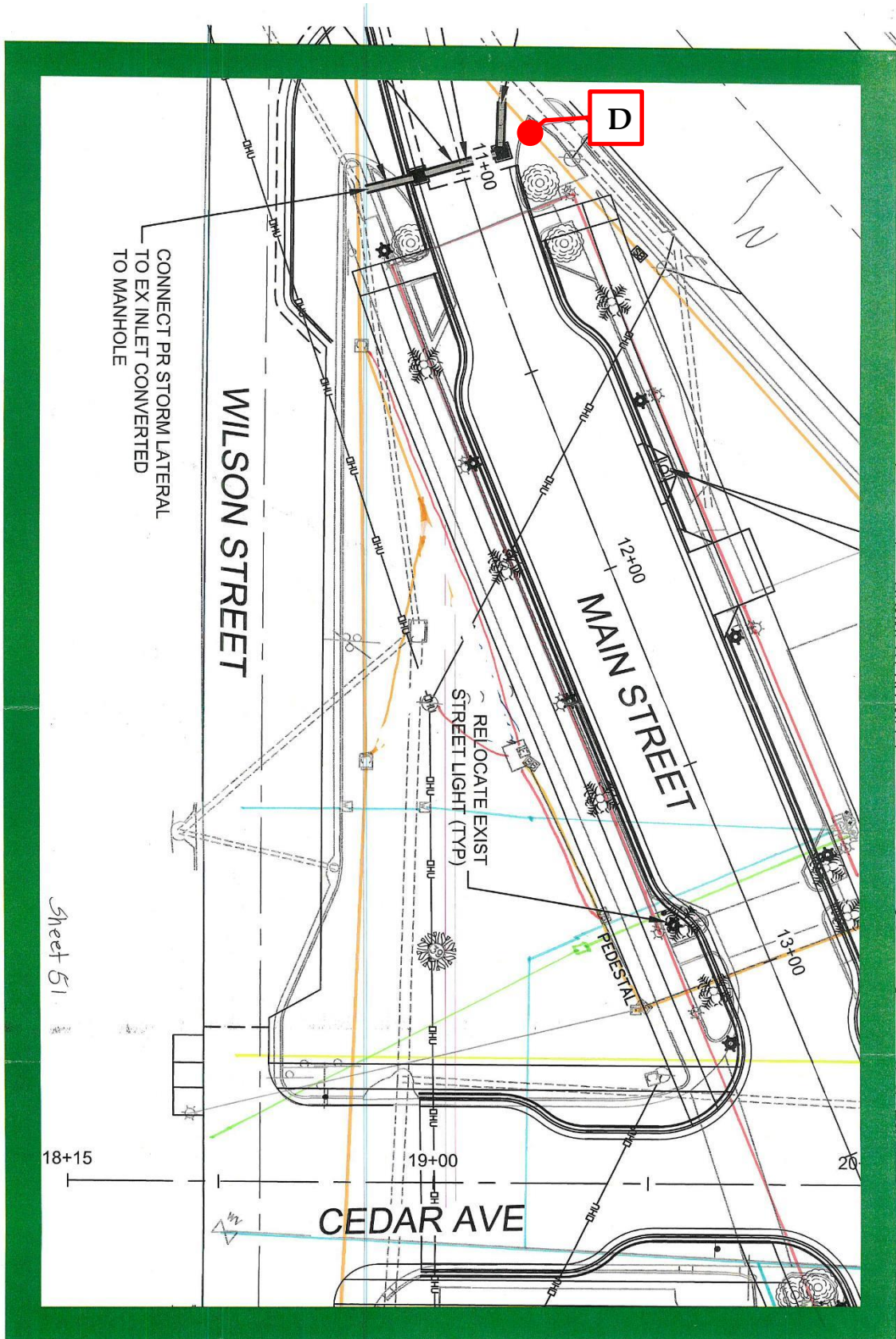
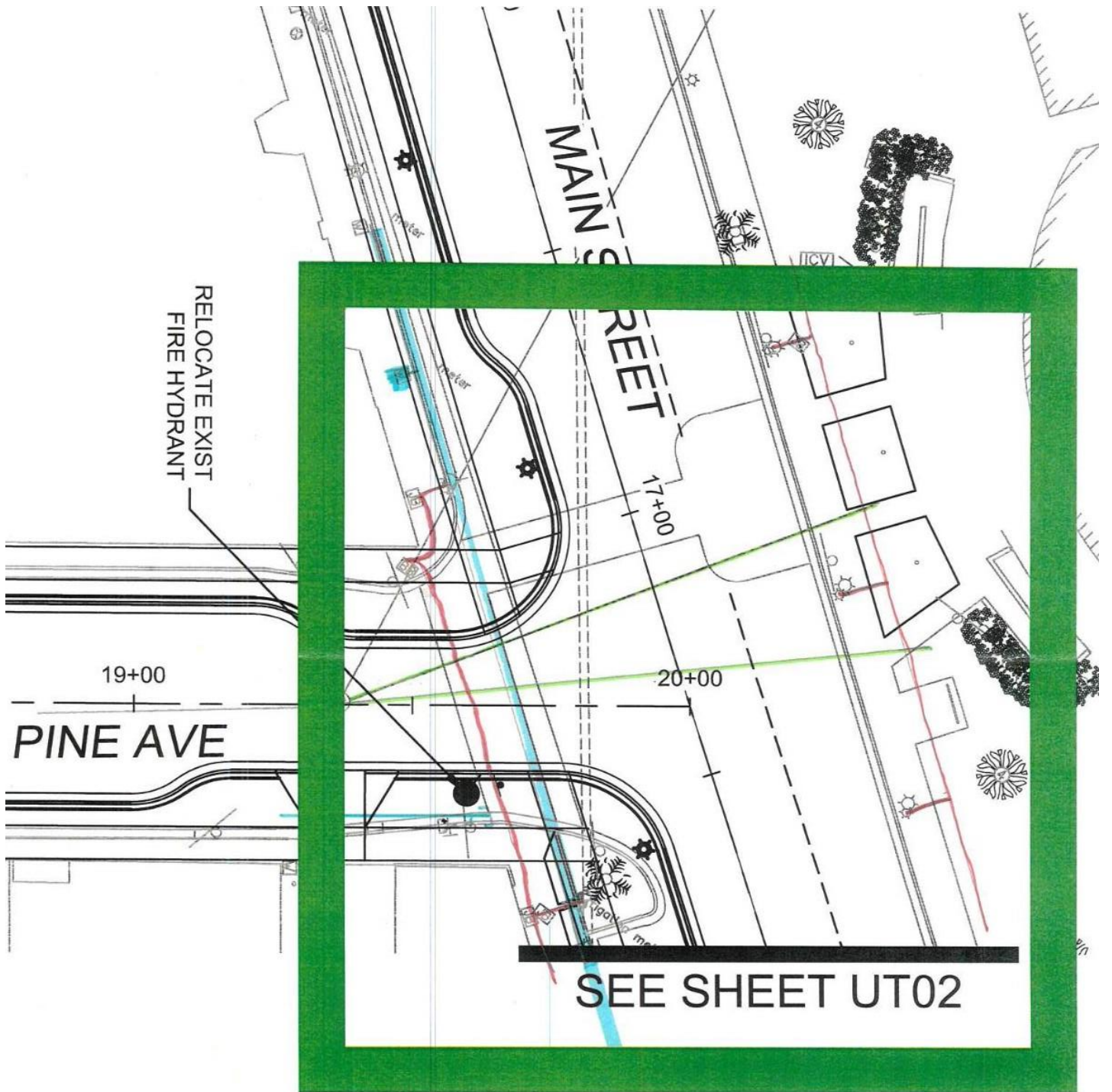


Figure 1A. Level A Pictures - US 90 & Main St



Figure 2. UT01 Field Sketch - Part 2



SEE SHEET UT02

NOTES:

1. ALL EXI
2. CONTR
3. DISCRE
4. SEE RC
5. SEE SH
- 6.



Sheet 51

Figure 3. UT02 Field Sketch - Part 1

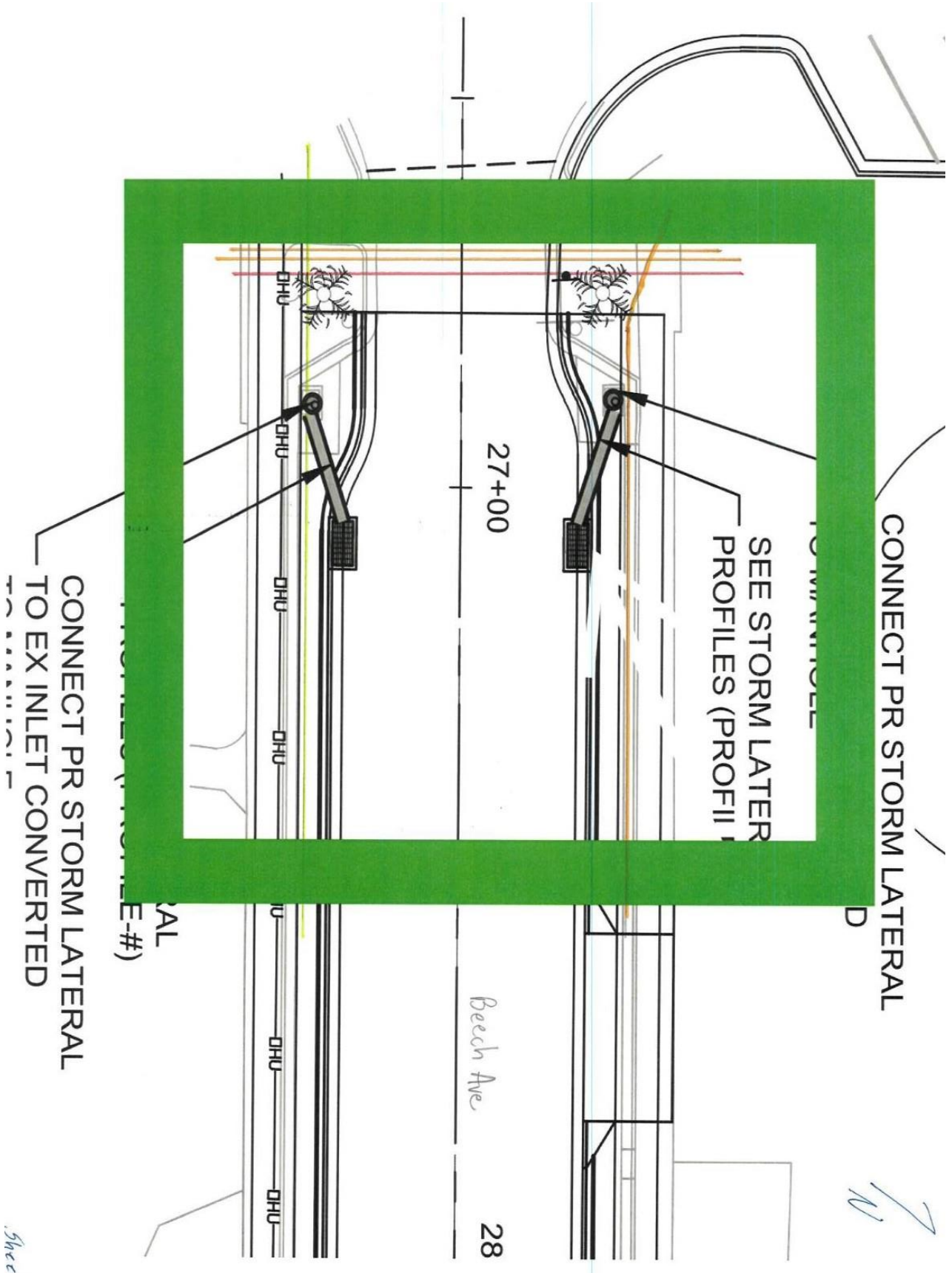
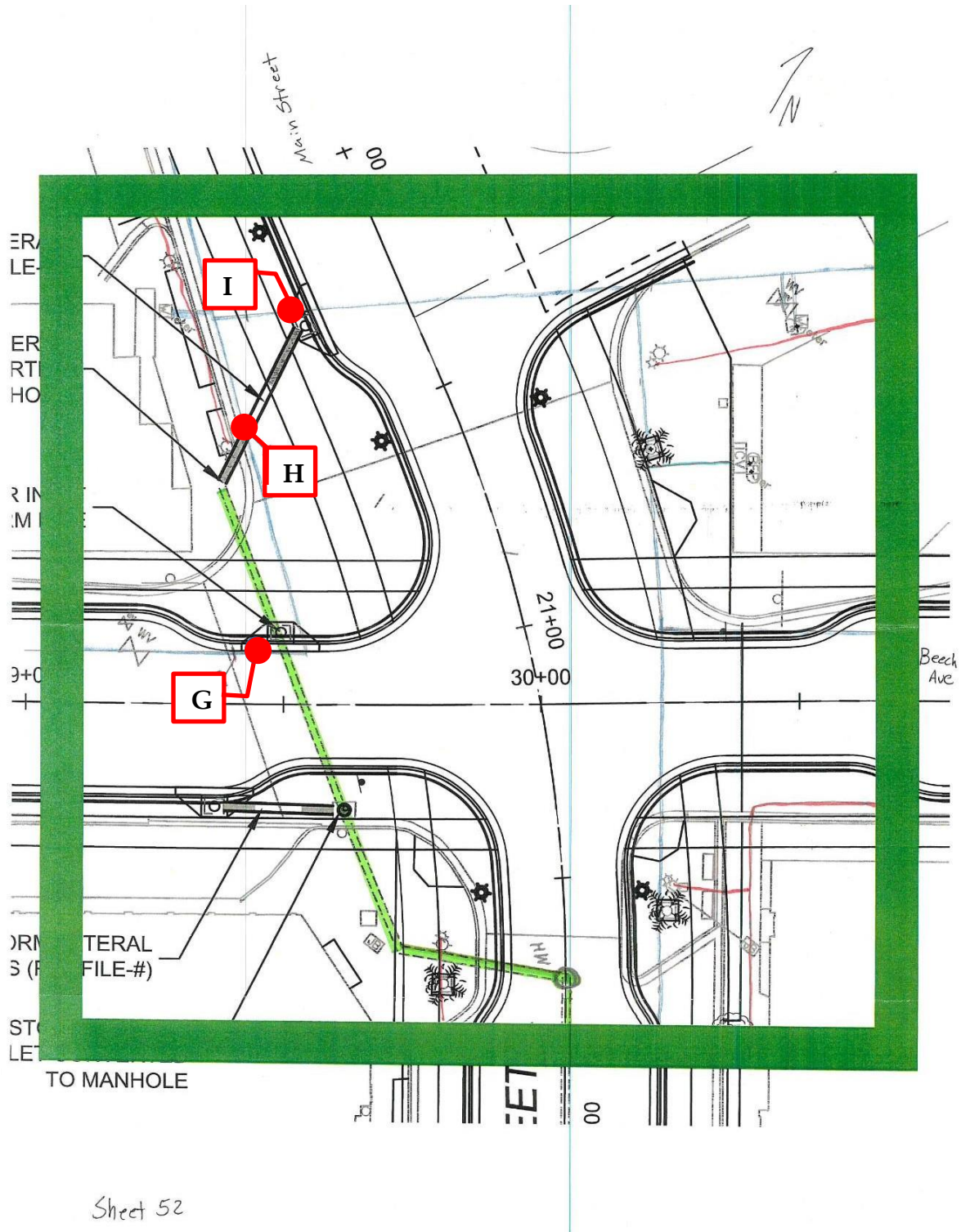


Figure 4. UT02 Field Sketch - Part 2



Sheet 52

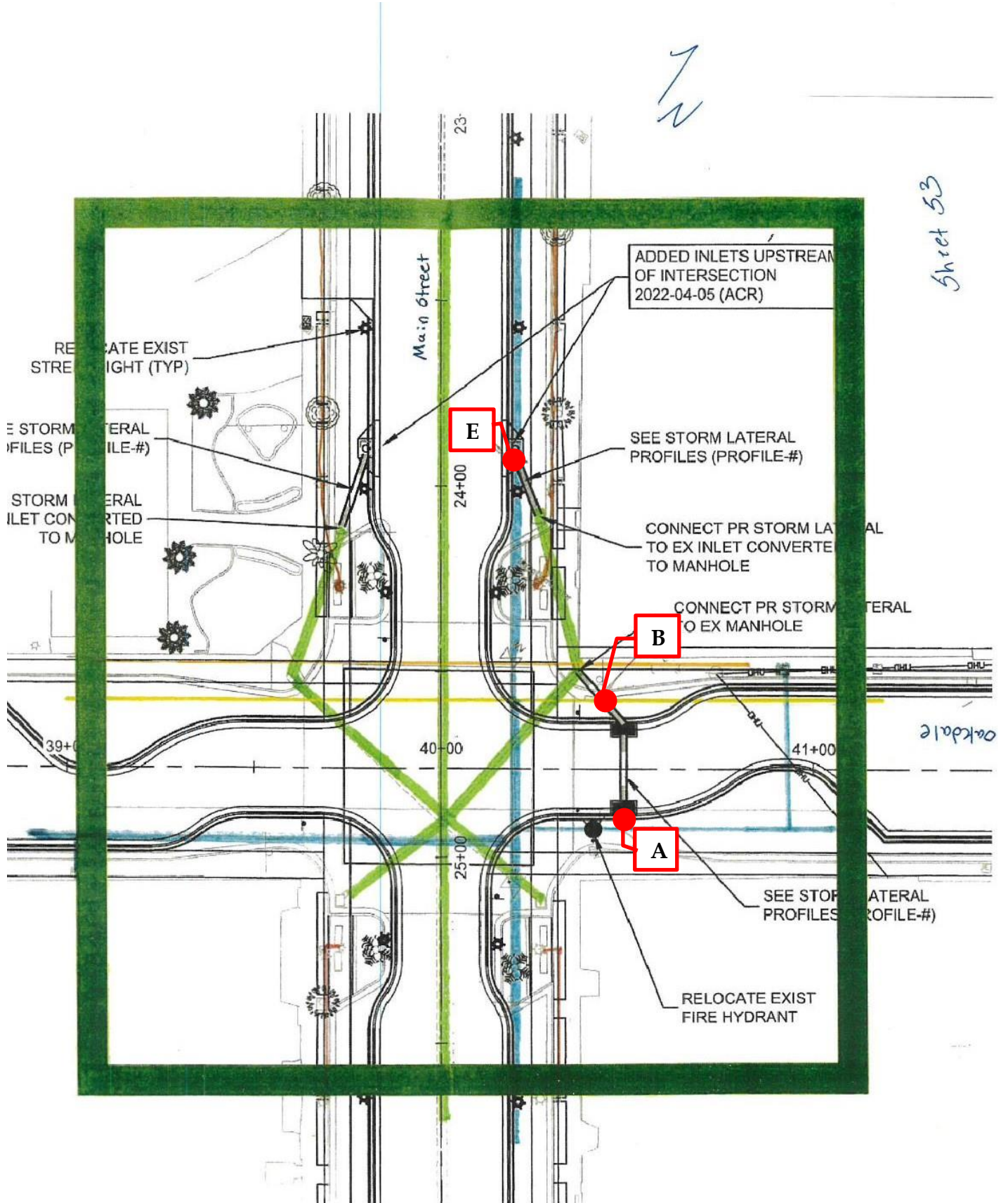


Figure 4A. Level A Pictures – Okloosa Title & Abstract - 402 Main St





Figure 5. UT03 Field Sketch



Sheet 53

*Figure 5A. Location E – Salon Surreal - 309 Main St*



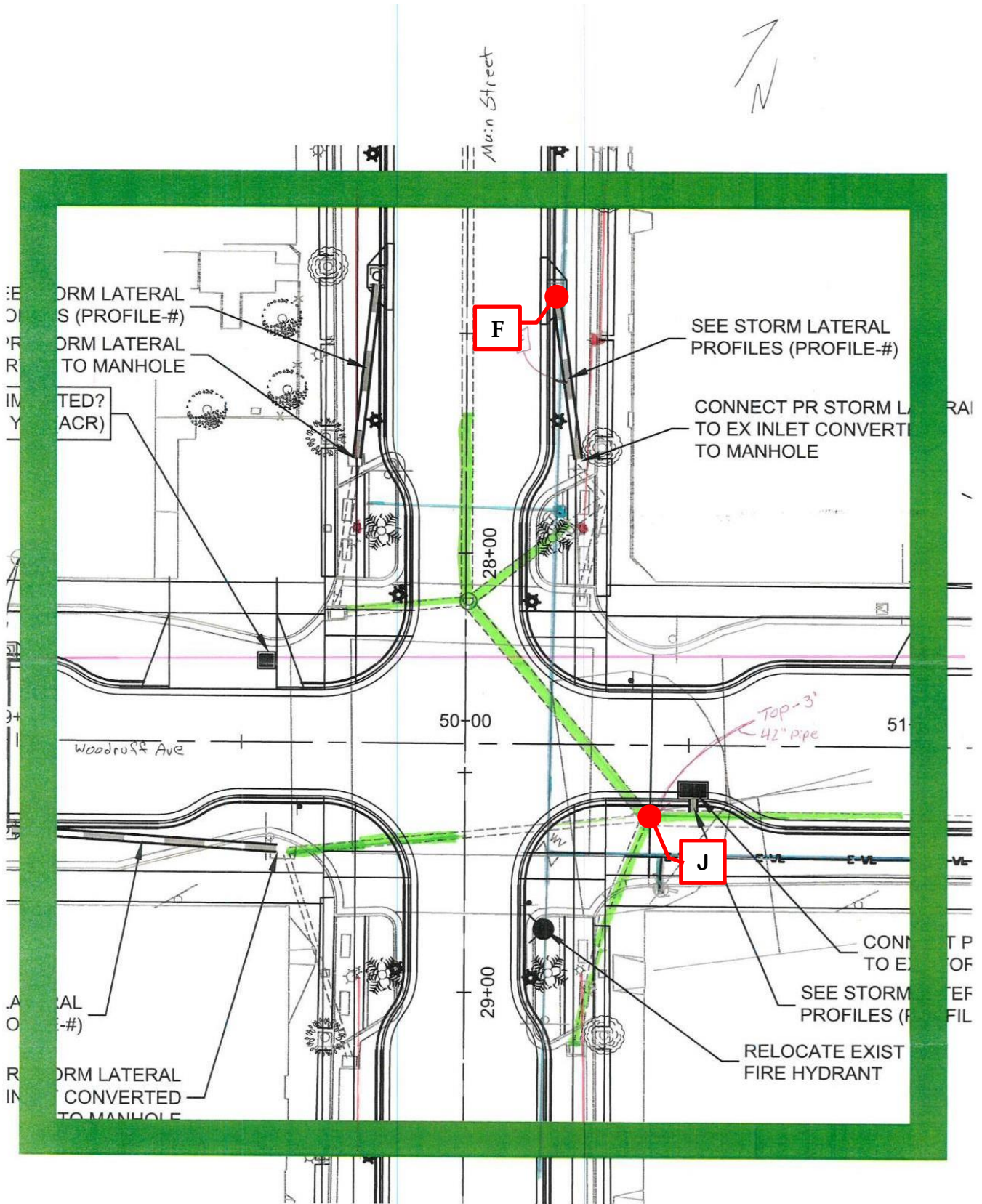
*Figure 5B. Location B – Oakdale Ave side of Rollin EZ - 301 Main St*



*Figure 5C. Location A - Oakdale Ave side of Crestview Plumbing & Hardware - 297 Main St*

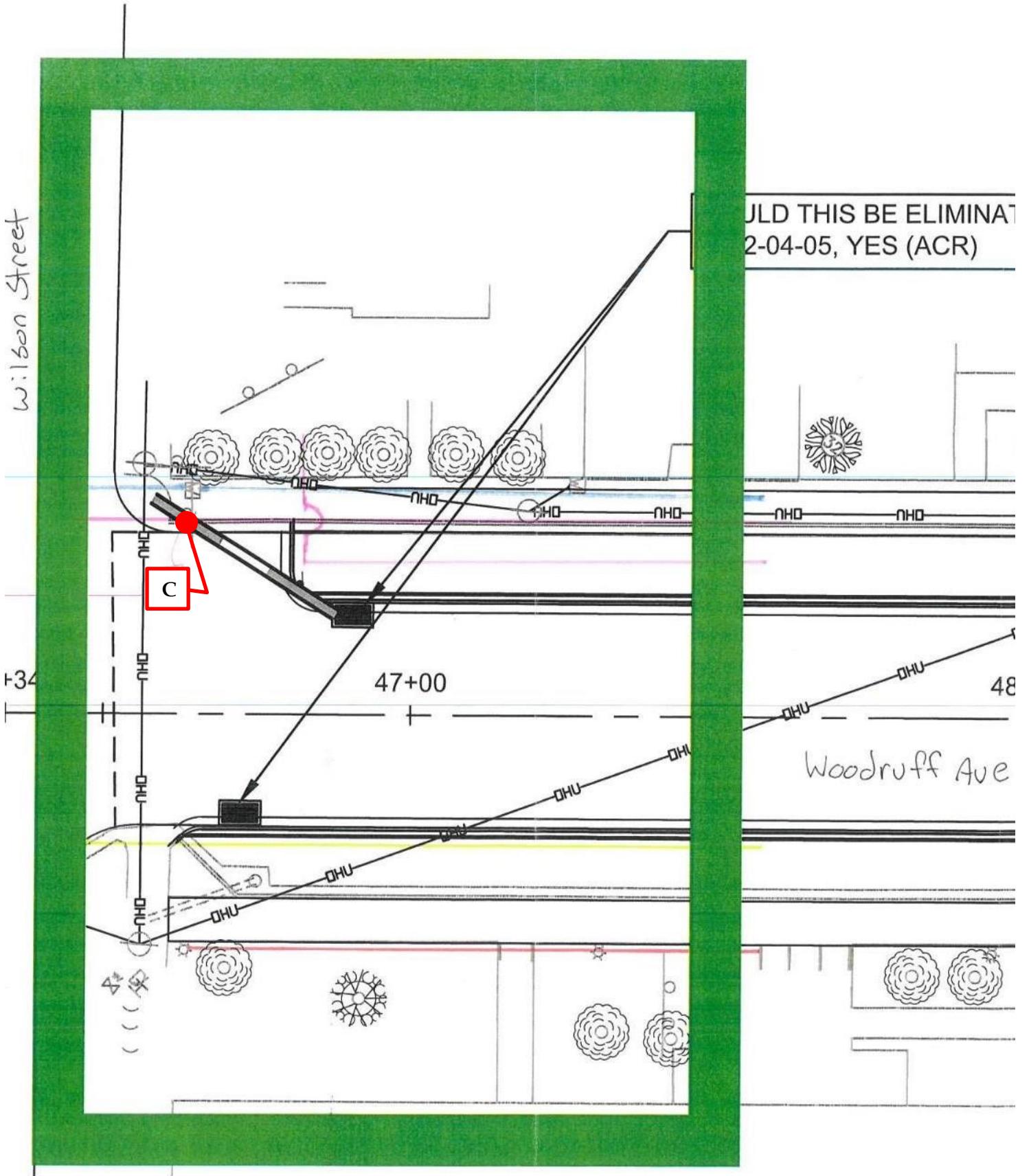


Figure 6. UT04 Field Sketch - Part 1



Sheet 54

Figure 7. UT04 Field Sketch - Part 2



*Figure 6A. Location F – Okaloosa Eye Care - 207 Main St*



*Figure 7A. Location C – The Holloway Agency – 168 W Woodruff Ave*





Figure 8. Main St Asphalt Thickness (Typ)

