

SECTION E
1 STORY W/MEZZANINE-
FILM ROOM & STORAGE ROOM
26,404 GSF
LARGE ASSEMBLY W/ STAGE
TYPE II SPRINKLERED

SECTION D
1 STORY W/BALCONY
24,034 GSF
LARGE ASSEMBLY W/O STAGE
TYPE IV UNPROTECTED
SPRINKLERED

SECTION B
2 STORIES
24,369 GSF - FIRST FLOOR
EDUCATIONAL OCCUPANCY W/
SMALL ASSEMBLY
TYPE IV UNPROTECTED
SPRINKLERED
(UNPROTECTED IN COMMONS)

SECTION C
1 STORY
26,550 GSF
EDUCATIONAL OCCUPANCY
(VOCATIONAL)
TYPE IV UNPROTECTED
SPRINKLERED

SECTION A
2 STORIES
27,577 GSF FIRST FLOOR
EDUCATIONAL OCCUPANCY
TYPE IV UNPROTECTED
SPRINKLERED

OVERALL FIRST FLOOR PLAN - ELECTRICAL
SCALE: 1"=20'-0"

NOTES:
1. OVERALL FIRST FLOOR PLAN IS SHOWN FOR REFERENCE ONLY. REFER TO PARTIAL FLOOR PLAN DRAWINGS WHICH ILLUSTRATE NEW/REPLACEMENT FIRE ALARM EQUIPMENT.
2. DATA LISTED FOR OCCUPANCY TYPE, SQUARE FOOTAGE, ETC FOR EACH BUILDING SECTION HAS BEEN TAKEN FROM EXISTING ARCHITECTURAL DRAWING FOR CONSTRUCTION OF THE EXISTING UNION CO. HIGH SCHOOL.

WALL LEGEND
1 HOUR FIRE WALL
2 HOUR FIRE WALL
4 HOUR FIRE WALL
INFORMATION REGARDING WALL RATINGS / WALL TYPES HAS BEEN TAKEN FROM EXISTING ARCHITECTURAL CONSTRUCTION DOCUMENTS FOR THE EXISTING UNION CO. HIGH SCHOOL.

Vreeland Engineers Inc.
3107 Sutherland Ave.
P.O. Box 10648
Knox, TN 37908
865-637-4451
vreelandengineers.com

UNION COUNTY HIGH SCHOOL
FIRE ALARM UPGRADES
UNION COUNTY, TENNESSEE
T.F.M. #09158 / PROJECT # 2019-11-26-03

DRAWING DESCRIPTION:
OVERALL FIRST FLOOR PLAN - ELECTRICAL

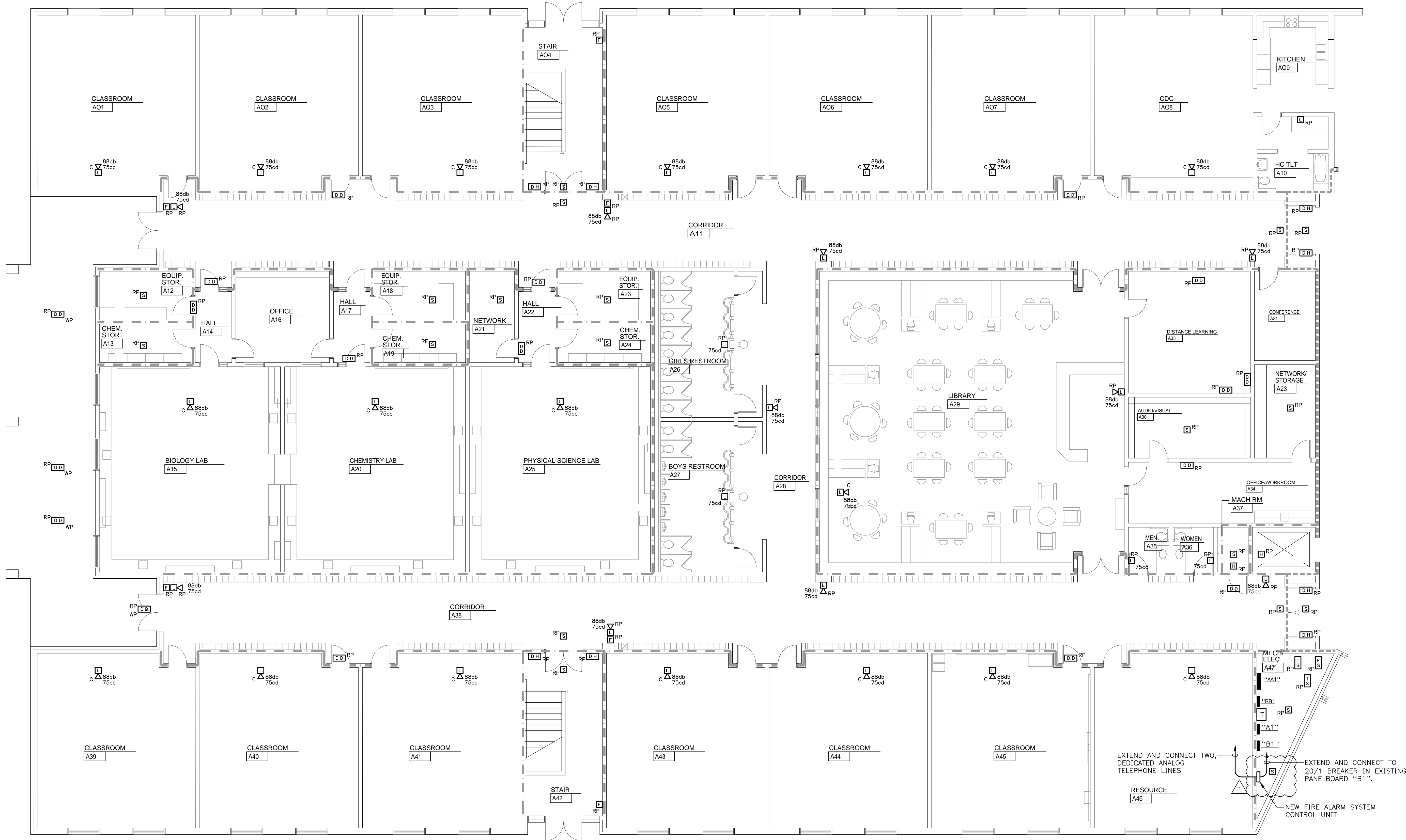
DATE:	11-22-2019
REVISIONS:	
1	TFM COMMENTS 12-5-19

SHEET NUMBER

E1

OF

E1A - UCHS First Floor Plan - Part A - Electrical.dwg
C.W.L. 12/05/19 3:45 PM CL19516(L5)



FIRST FLOOR PLAN - PART A - ELECTRICAL
SCALE: 1/8" = 1'-0"

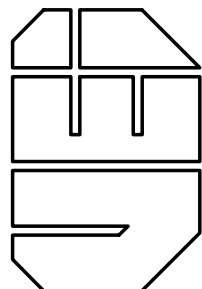
WALL LEGEND

1 HOUR FIRE WALL
2 HOUR FIRE WALL
4 HOUR FIRE WALL

INFORMATION REGARDING WALL RATINGS / WALL TYPES HAS BEEN TAKEN FROM EXISTING ARCHITECTURAL CONSTRUCTION DOCUMENTS FOR THE EXISTING UNION CO. HIGH SCHOOL.



Vreeland Engineers Inc.
3107 Sutherland Ave.
P.O. Box 1064839
Knox, TN 37602-4839
Knox 865-637-4451
vreelandengineers.com



UNION COUNTY HIGH SCHOOL
FIRE ALARM UPGRADES
UNION COUNTY, TENNESSEE
T.F.M. #09158 / PROJECT # 2019-11-26-03

DRAWING DESCRIPTION:
FIRST FLOOR PLAN -
PART A - ELECTRICAL

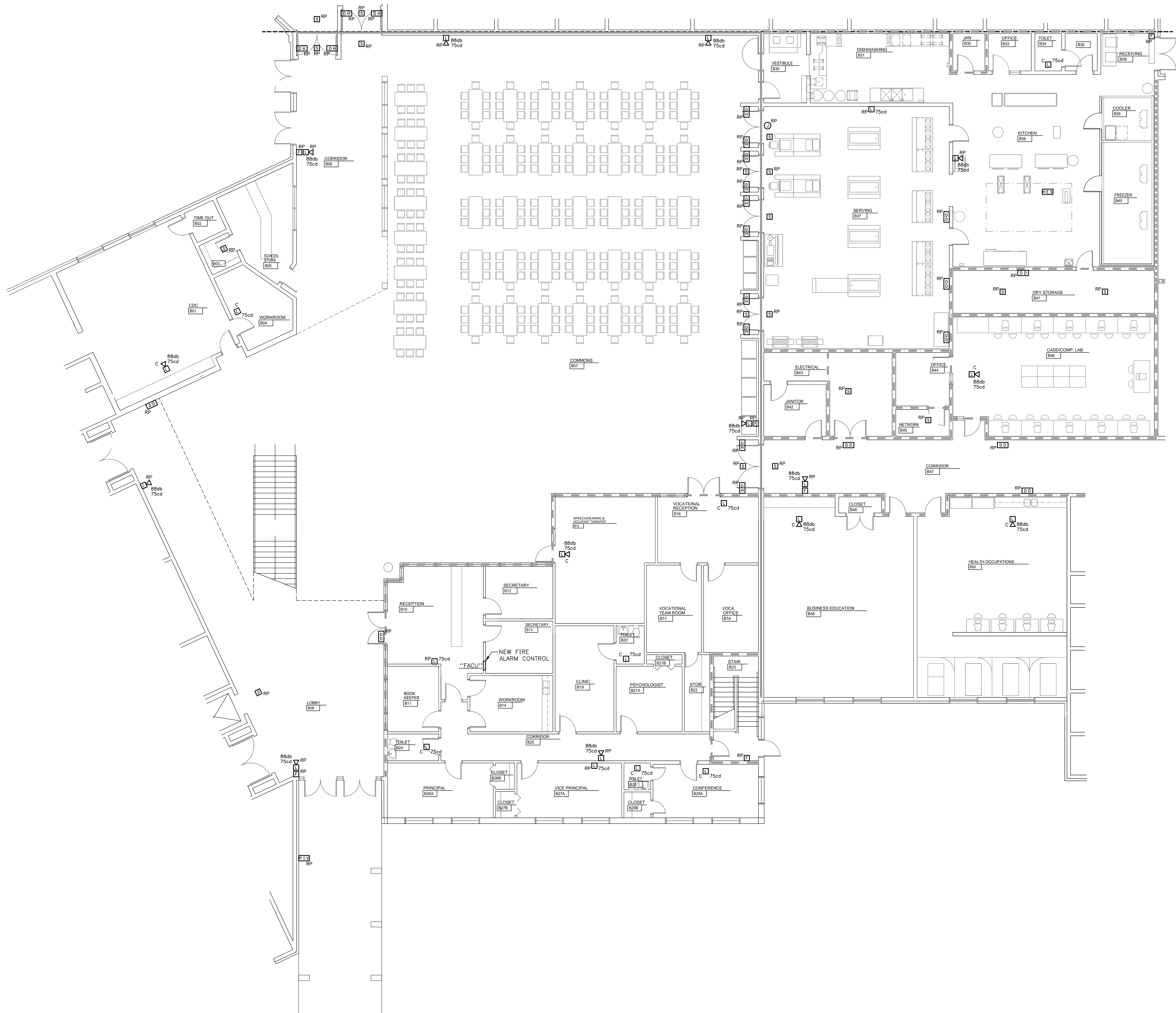
DATE:	11-22-2019
REVISIONS:	
1	TFM COMMENTS 12-5-19

SHEET NUMBER

E1A

OF

E1B - UCHS First Floor Plan - Part B - Electrical.dwg
JJ1
10/09/19 12:02 PM CL19516(L5)



FIRST FLOOR PLAN - PART B - ELECTRICAL
SCALE: 1/8" = 1'-0"

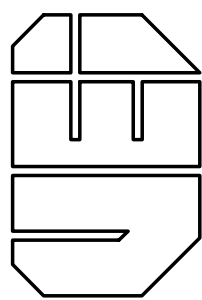
WALL LEGEND

1 HOUR FIRE WALL
2 HOUR FIRE WALL
4 HOUR FIRE WALL

INFORMATION REGARDING WALL RATINGS / WALL TYPES HAS BEEN TAKEN FROM EXISTING ARCHITECTURAL CONSTRUCTION DOCUMENTS FOR THE EXISTING UNION CO. HIGH SCHOOL.



Vreeland Engineers Inc.
3107 Sutherland Ave.
P.O. Box 106459
Knox, TN 37609
865-637-4451
vreelandengineers.com



**UNION COUNTY HIGH SCHOOL
FIRE ALARM UPGRADES
UNION COUNTY, TENNESSEE**
T.F.M. #09158 / PROJECT # 2019-11-26-03

DRAWING DESCRIPTION:
FIRST FLOOR PLAN -
PART B - ELECTRICAL

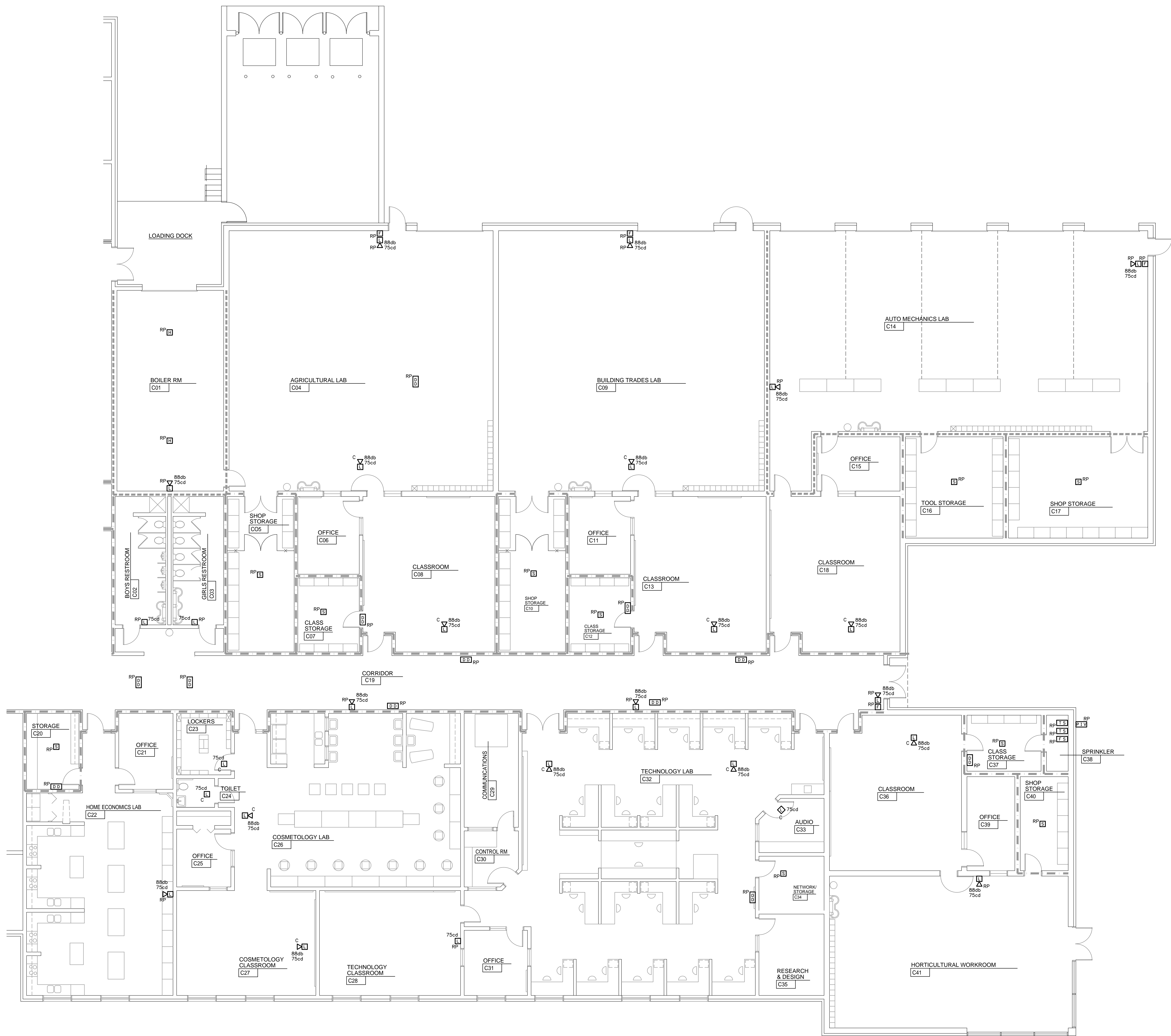
DATE:	11-22-2019
REVISIONS:	
1	TFM COMMENTS 12-5-19

SHEET NUMBER

E1B

OF

E1C - UCHS First Floor Plan - Part C - Electrical.dwg
A.J.C. 11/25/19 9:47 AM CL19516(L6)



FIRST FLOOR PLAN - PART C - ELECTRICAL
SCALE: 1/8" = 1'-0"

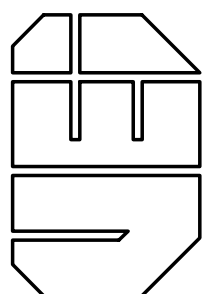
WALL LEGEND

1 HOUR FIRE WALL
2 HOUR FIRE WALL
4 HOUR FIRE WALL

INFORMATION REGARDING WALL RATINGS /
WALL TYPES HAS BEEN TAKEN FROM EXISTING
ARCHITECTURAL CONSTRUCTION DOCUMENTS
FOR THE EXISTING UNION CO. HIGH SCHOOL.



Vreeland Engineers Inc.
3107 Sutherland Ave.
P.O. Box 10648
Knox, TN 37939
Knox 865-637-4451
vreelandengineers.com



UNION COUNTY HIGH SCHOOL
FIRE ALARM UPGRADES
UNION COUNTY, TENNESSEE
T.F.M. #09158 / PROJECT # 2019-11-26-03

DRAWING DESCRIPTION:
**FIRST FLOOR PLAN -
PART C - ELECTRICAL**

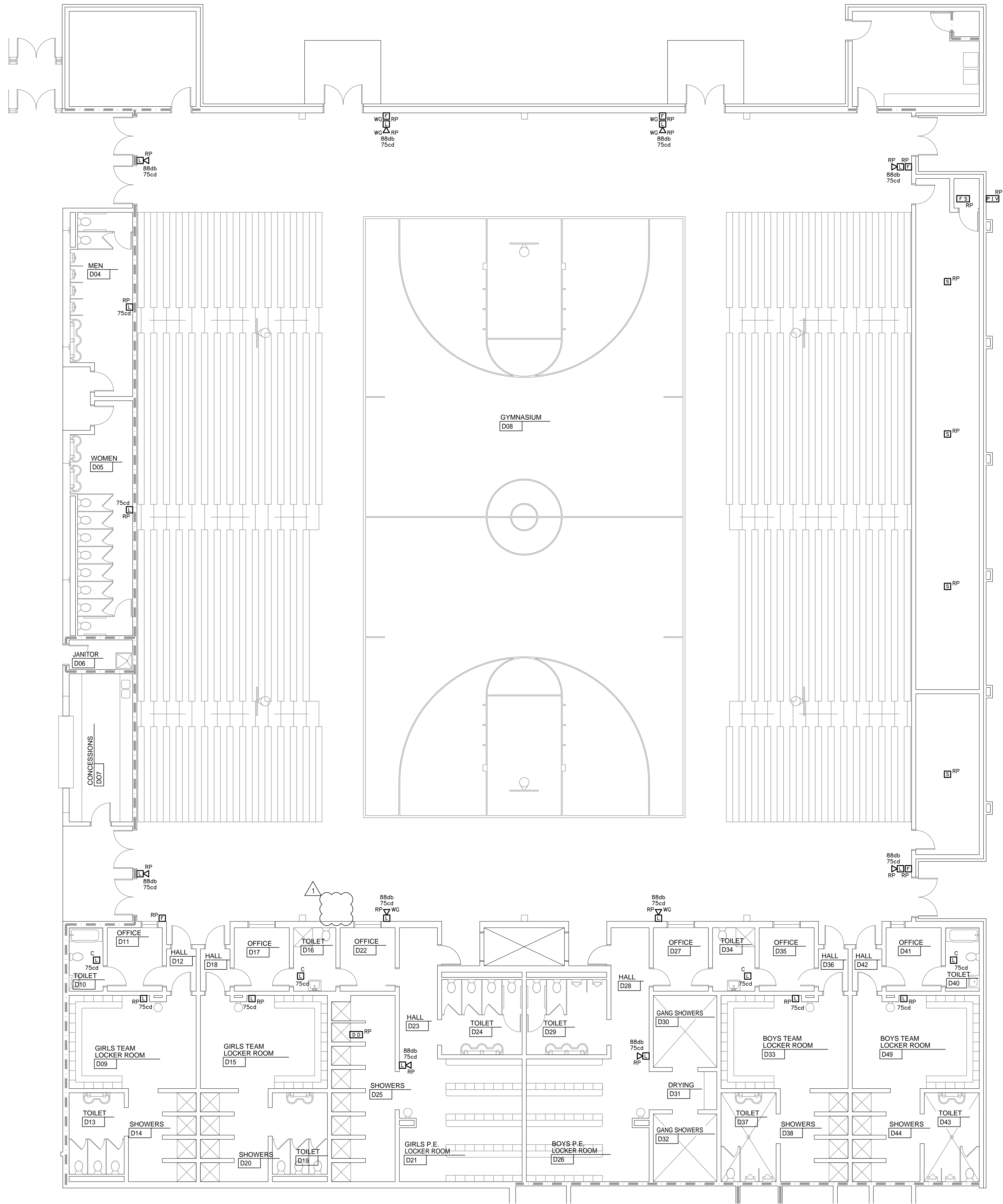
DATE:	11-22-2019
REVISIONS:	
1	TFM COMMENTS 12-5-19

SHEET NUMBER

E1C

OF

E1D - UCHS First Floor Plan - Part D - Electrical.dwg
C.W.L. 12/05/19 3:43 PM CL19516(L6)



FIRST FLOOR PLAN - PART D - ELECTRICAL
SCALE: 1/8"=1'-0"
0' 4' 8' 16'

WALL LEGEND

1 HOUR FIRE WALL

2 HOUR FIRE WALL

4 HOUR FIRE WALL

INFORMATION REGARDING WALL RATINGS / WALL TYPES HAS BEEN TAKEN FROM EXISTING ARCHITECTURAL CONSTRUCTION DOCUMENTS FOR THE EXISTING UNION CO. HIGH SCHOOL.

CHARLES N. LUTTRELL
REGISTERED ENGINEER
NO. 14177
STATE OF TENNESSEE
1987

Vreeland Engineers Inc.

3107 Sutherland Ave.
P.O. Box 10948
Knox, TN 37939
865-637-4451
vreelandengineers.com

UNION COUNTY HIGH SCHOOL
FIRE ALARM UPGRADES
UNION COUNTY, TENNESSEE
T.F.M. #09158 / PROJECT # 2019-11-26-03

DRAWING DESCRIPTION:
FIRST FLOOR PLAN -
PART D - ELECTRICAL

DATE:
11-22-2019

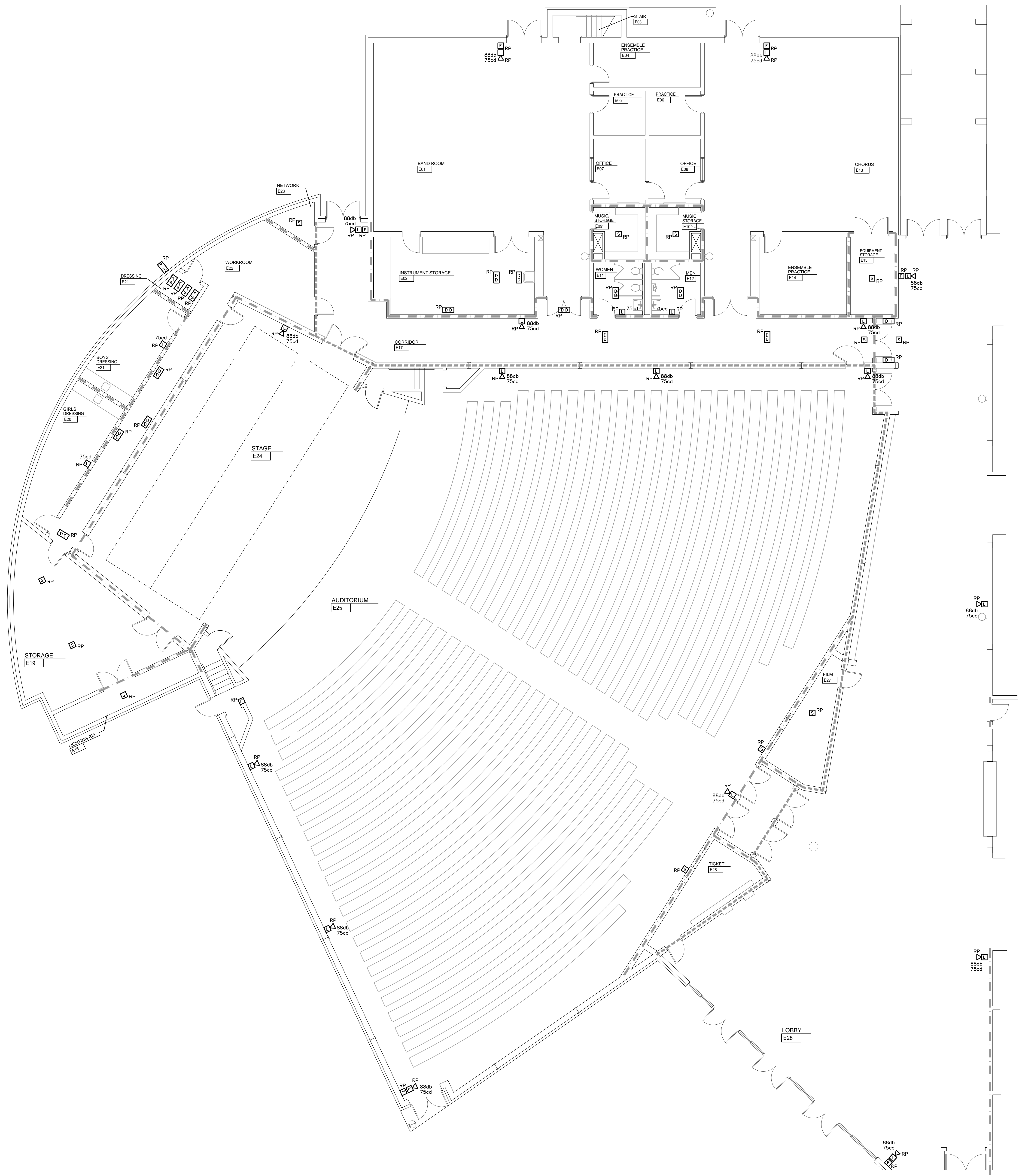
REVISIONS:
1 TFM COMMENTS 12-5-19

SHEET NUMBER

E1D

OF

E1E - UCHS First Floor Plan - Part E - Electrical.dwg
JJ1: 10/09/19 1:54 PM CL19516(L6)



FIRST FLOOR PLAN - PART E - ELECTRICAL
SCALE: 1/8"=1'-0"

WALL LEGEND

1 HOUR FIRE WALL

2 HOUR FIRE WALL

4 HOUR FIRE WALL

INFORMATION REGARDING WALL RATINGS / WALL TYPES HAS BEEN TAKEN FROM EXISTING ARCHITECTURAL CONSTRUCTION DOCUMENTS FOR THE EXISTING UNION CO. HIGH SCHOOL.

CHARLES N. LUTTRELL
REGISTERED ENGINEER
NO. 14177
STATE OF TENNESSEE
12-27-19

Vreeland Engineers Inc.
3107 Sutherland Ave.
P.O. Box 1064839
Knox, TN 37616-4839
865-637-4451
vreelandengineers.com

UNION COUNTY HIGH SCHOOL
FIRE ALARM UPGRADES
UNION COUNTY, TENNESSEE
T.F.M. #09158 / PROJECT # 2019-11-26-03

DRAWING DESCRIPTION:
FIRST FLOOR PLAN -
PART E - ELECTRICAL

DATE:
11-22-2019

REVISIONS:
1 TFM COMMENTS 12-5-19

SHEET NUMBER

E1E

OF