

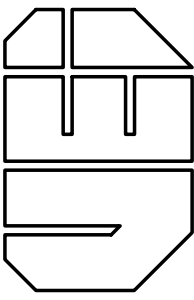
OVERALL SECOND FLOOR PLAN - ELECTRICAL
SCALE: 1"=20'-0"

- NOTES:
- OVERALL SECOND FLOOR PLAN IS SHOWN FOR REFERENCE ONLY. REFER TO PARTIAL FLOOR PLAN DRAWINGS WHICH ILLUSTRATE NEW/REPLACEMENT FIRE ALARM EQUIPMENT.
 - DATA LISTED FOR OCCUPANCY TYPE, SQUARE FOOTAGE, ETC FOR EACH BUILDING SECTION HAS BEEN TAKEN FROM EXISTING ARCHITECTURAL DRAWING FOR CONSTRUCTION OF THE EXISTING UNION CO. HIGH SCHOOL.

WALL LEGEND	
1 HOUR FIRE WALL	----
2 HOUR FIRE WALL	-----
4 HOUR FIRE WALL	-----
INFORMATION REGARDING WALL RATINGS / WALL TYPES HAS BEEN TAKEN FROM EXISTING ARCHITECTURAL CONSTRUCTION DOCUMENTS FOR THE EXISTING UNION CO. HIGH SCHOOL.	



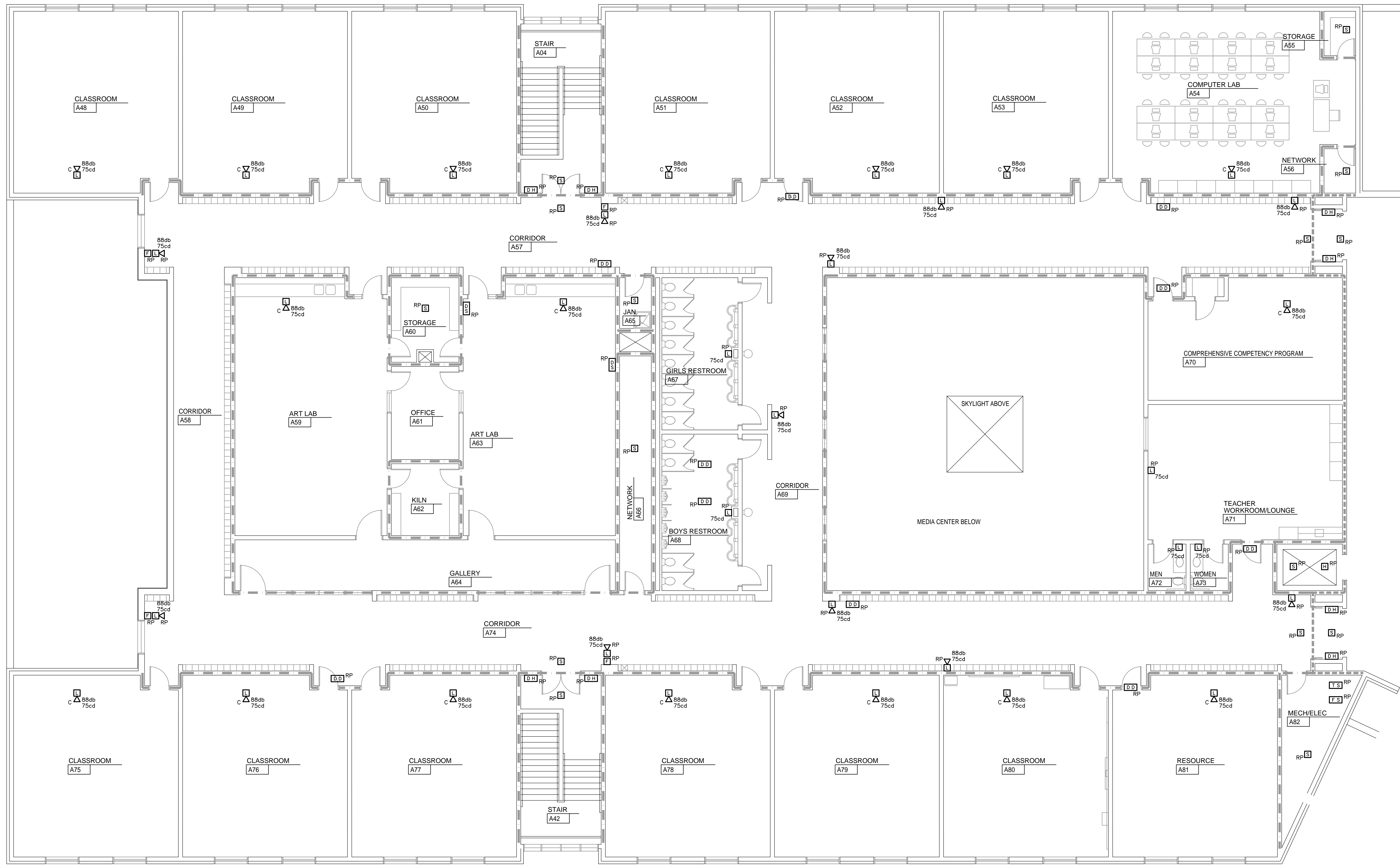
Vreeland Engineers Inc.
3107 Sutherland Ave.
P.O. Box 10648
Knox, TN 37909
865-637-4451
vreelandengineers.com



UNION COUNTY HIGH SCHOOL
FIRE ALARM UPGRADES
UNION COUNTY, TENNESSEE
T.F.M. #09158 / PROJECT # 2019-11-26-03

DRAWING DESCRIPTION:	
OVERALL SECOND FLOOR PLAN - ELECTRICAL	
DATE:	11-22-2019
REVISIONS:	
1	TFM COMMENTS 12-5-19
SHEET NUMBER	
E2	
OF	

E2A - UCHS Second Floor Plan - Part A - Electrical.dwg
JJ1.
10/09/19 11:16 AM CL19318(L5)



SECOND FLOOR PLAN - PART A - ELECTRICAL

SCALE: 1/8" = 1'-0"
0' 4' 8' 16'

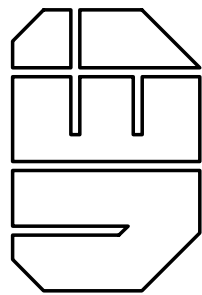
WALL LEGEND

1 HOUR FIRE WALL - - - - -
2 HOUR FIRE WALL - - - - -
4 HOUR FIRE WALL - - - - -

INFORMATION REGARDING WALL RATINGS /
WALL TYPES HAS BEEN TAKEN FROM EXISTING
ARCHITECTURAL CONSTRUCTION DOCUMENTS
FOR THE EXISTING UNION CO. HIGH SCHOOL.



Vreeland Engineers Inc.
3107 Sutherland Ave.
P.O. Box 10948
Knox, TN 37909
Knox 865-637-4451
vreelandengineers.com



UNION COUNTY HIGH SCHOOL
FIRE ALARM UPGRADES
UNION COUNTY, TENNESSEE
T.F.M. #09158 / PROJECT # 2019-11-26-03

DRAWING DESCRIPTION:
SECOND FLOOR PLAN -
PART A - ELECTRICAL

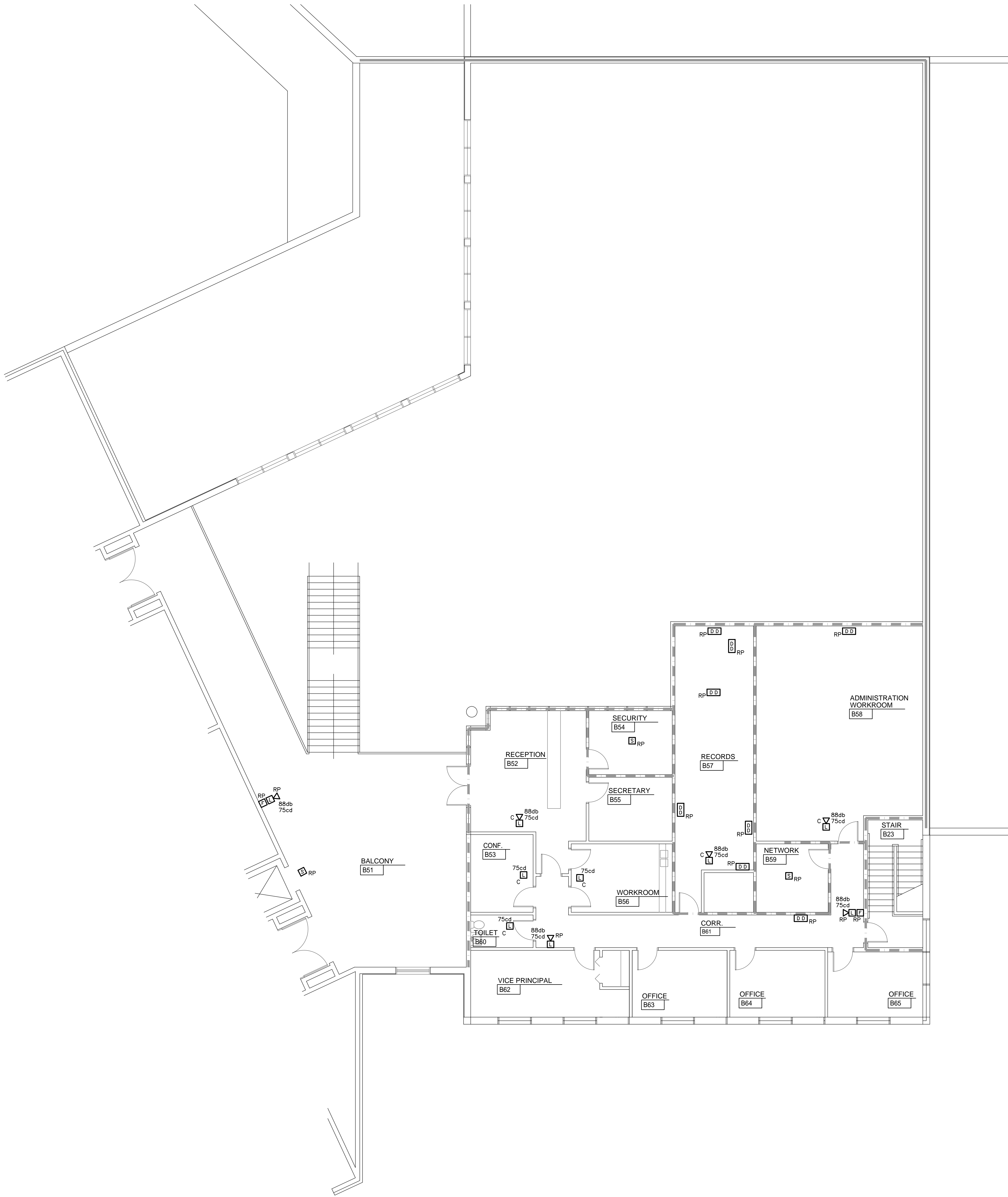
DATE:	11-22-2019
REVISIONS:	
1	TFM COMMENTS 12-5-19

SHEET NUMBER

E2A

OF

E2B - UCHS Second Floor Plan - Part B - Electrical.dwg
A.J.C. 11/25/19 10:45 AM CL19318(L3)



SECOND FLOOR PLAN - PART B - ELECTRICAL
SCALE: $\frac{3}{8}$ " = 1'-0"

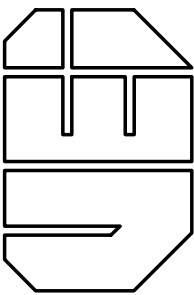
WALL LEGEND

1 HOUR FIRE WALL - - - - -
2 HOUR FIRE WALL - - - - -
4 HOUR FIRE WALL - - - - -

INFORMATION REGARDING WALL RATINGS /
WALL TYPES HAS BEEN TAKEN FROM EXISTING
ARCHITECTURAL CONSTRUCTION DOCUMENTS
FOR THE EXISTING UNION CO. HIGH SCHOOL.



Vreeland Engineers Inc.
3107 Sutherland Ave.
P.O. Box 1064839
Knox, TN 37602-0439
865-637-4451
vreelandengineers.com



UNION COUNTY HIGH SCHOOL
FIRE ALARM UPGRADES
UNION COUNTY, TENNESSEE
T.F.M. #09158 / PROJECT # 2019-11-26-03

DRAWING DESCRIPTION:
SECOND FLOOR PLAN -
PART B - ELECTRICAL

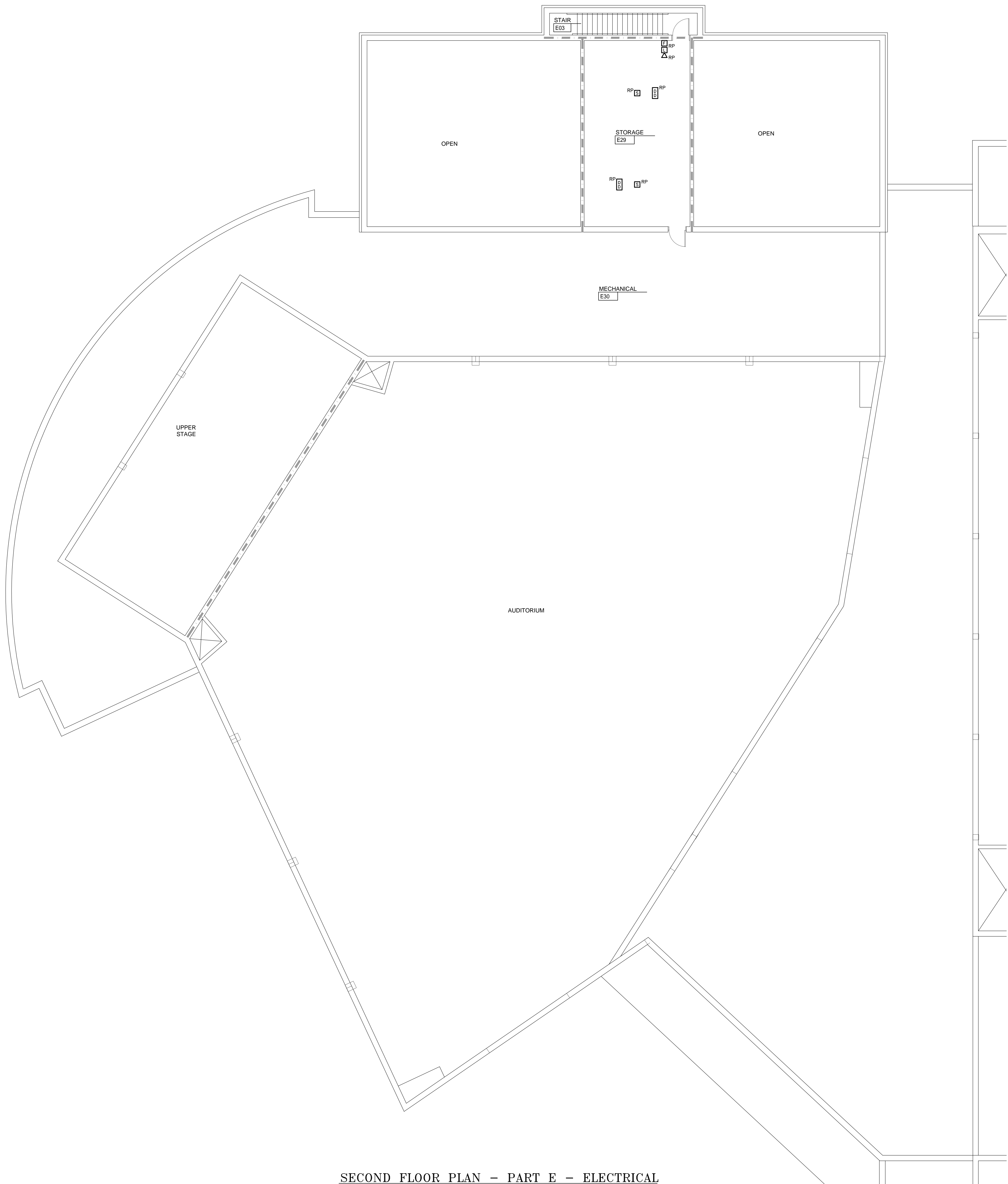
DATE:	11-22-2019
REVISIONS:	
1	TFM COMMENTS 12-5-19

SHEET NUMBER

E2B

OF

EZE - UCHS Second Floor Plan - Part E - Electrical.dwg
JJ1: 10/09/19 2:02 PM CL19318(L3)



SECOND FLOOR PLAN - PART E - ELECTRICAL
SCALE: 1/8" = 1'-0"

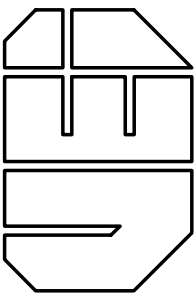
WALL LEGEND

1 HOUR FIRE WALL - - - - -
2 HOUR FIRE WALL - - - - -
4 HOUR FIRE WALL - - - - -

INFORMATION REGARDING WALL RATINGS /
WALL TYPES HAS BEEN TAKEN FROM EXISTING
ARCHITECTURAL CONSTRUCTION DOCUMENTS
FOR THE EXISTING UNION CO. HIGH SCHOOL.



Vreeland Engineers Inc.
3107 Sutherland Ave.
P.O. Box 106489
Knoxville, TN 37910-0489
865-637-4451
vreelandengineers.com



UNION COUNTY HIGH SCHOOL
FIRE ALARM UPGRADES
UNION COUNTY, TENNESSEE
T.F.M. #09158 / PROJECT # 2019-11-26-03

DRAWING DESCRIPTION:	
SECOND FLOOR PLAN - PART E - ELECTRICAL	
DATE: 11-22-2019	
REVISIONS:	
1	TFM COMMENTS 12-5-19
SHEET NUMBER	
E2E	
OF	