

## Master Plan - Scheme 6 Overview

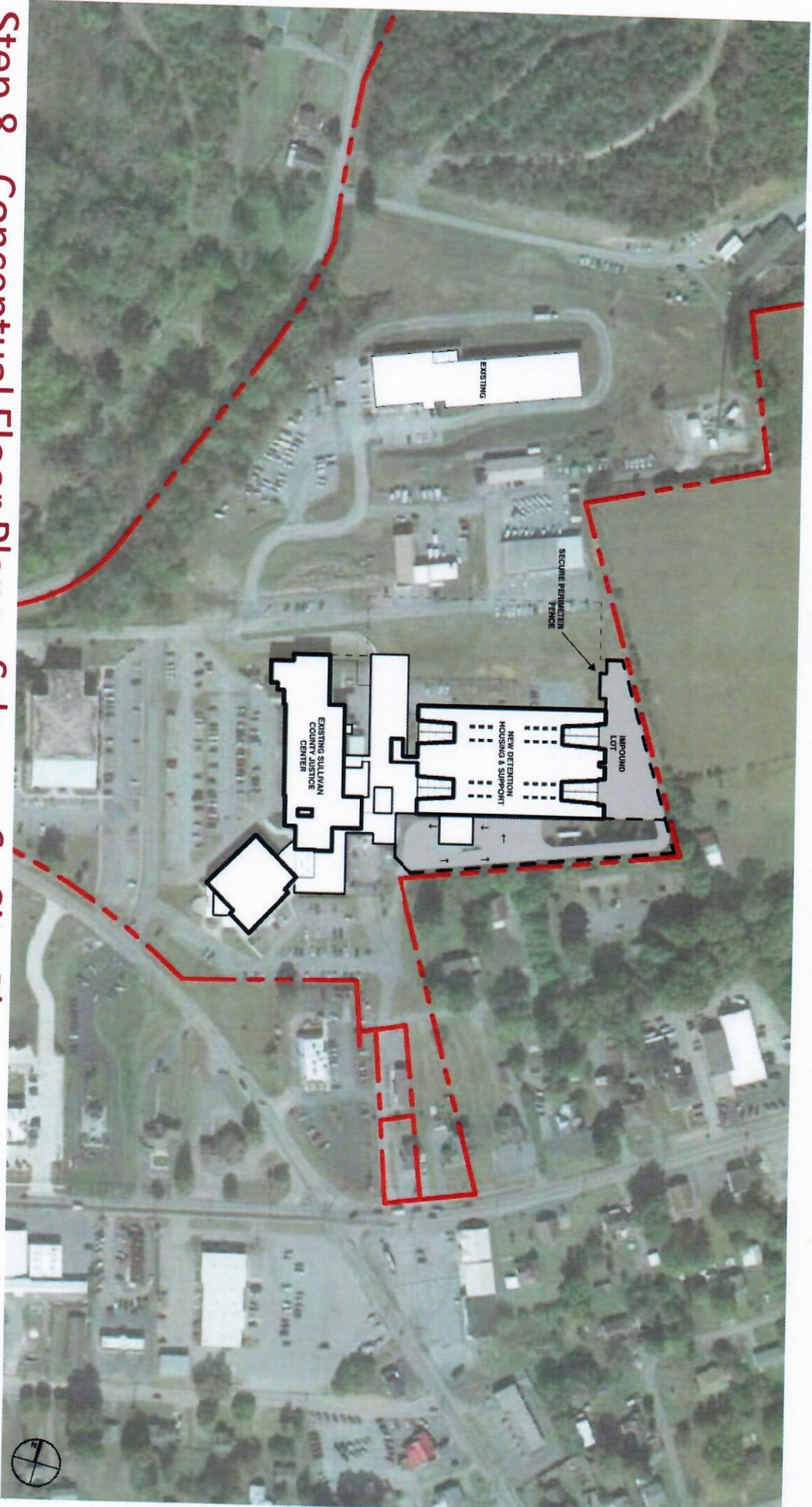
- Meets inmate housing bed projections for next 20 years
- Scheme 6 is master planned as 3 Phases
- Phase 1 adds 560 beds to existing jail - jail facility will be shelled for 224 beds
- 190,000 SF of addition
- Renovation of existing facility would occur later and include expanding sheriff's needs and courts needs
- Future expansion would accommodate 448 housing beds and eight courts
- 14 new classrooms for inmate programs
- New intake/release/transfer
- New central control
- New medical clinic
- New kitchen/warehouse & laundry

## Step 8 - Master Plans - Scheme 6



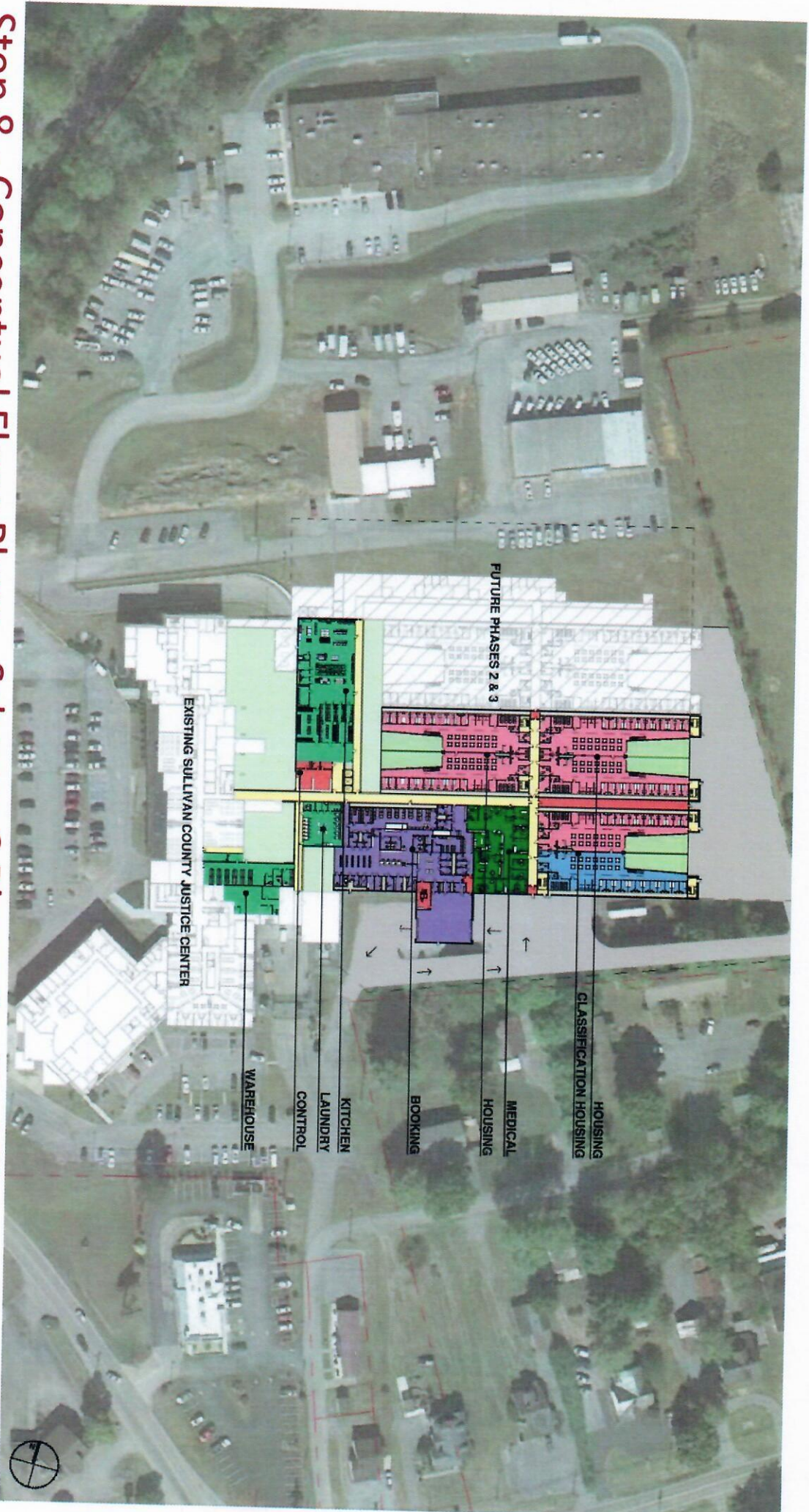


Step 8 - Conceptual Floor Plans - Scheme 6 - Site Plan



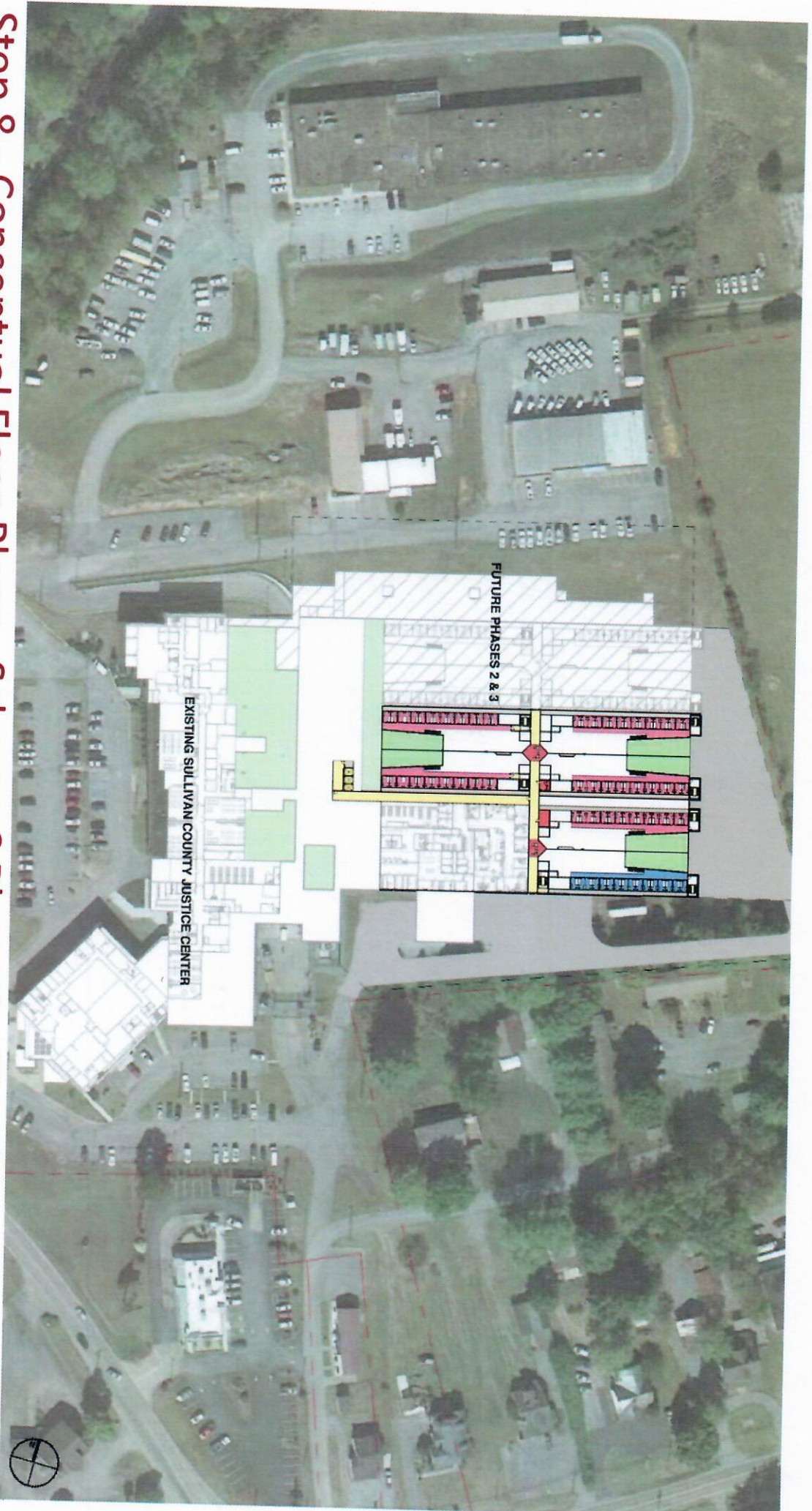


Step 8 - Conceptual Floor Plans - Scheme 6 Phase 1 - First Floor



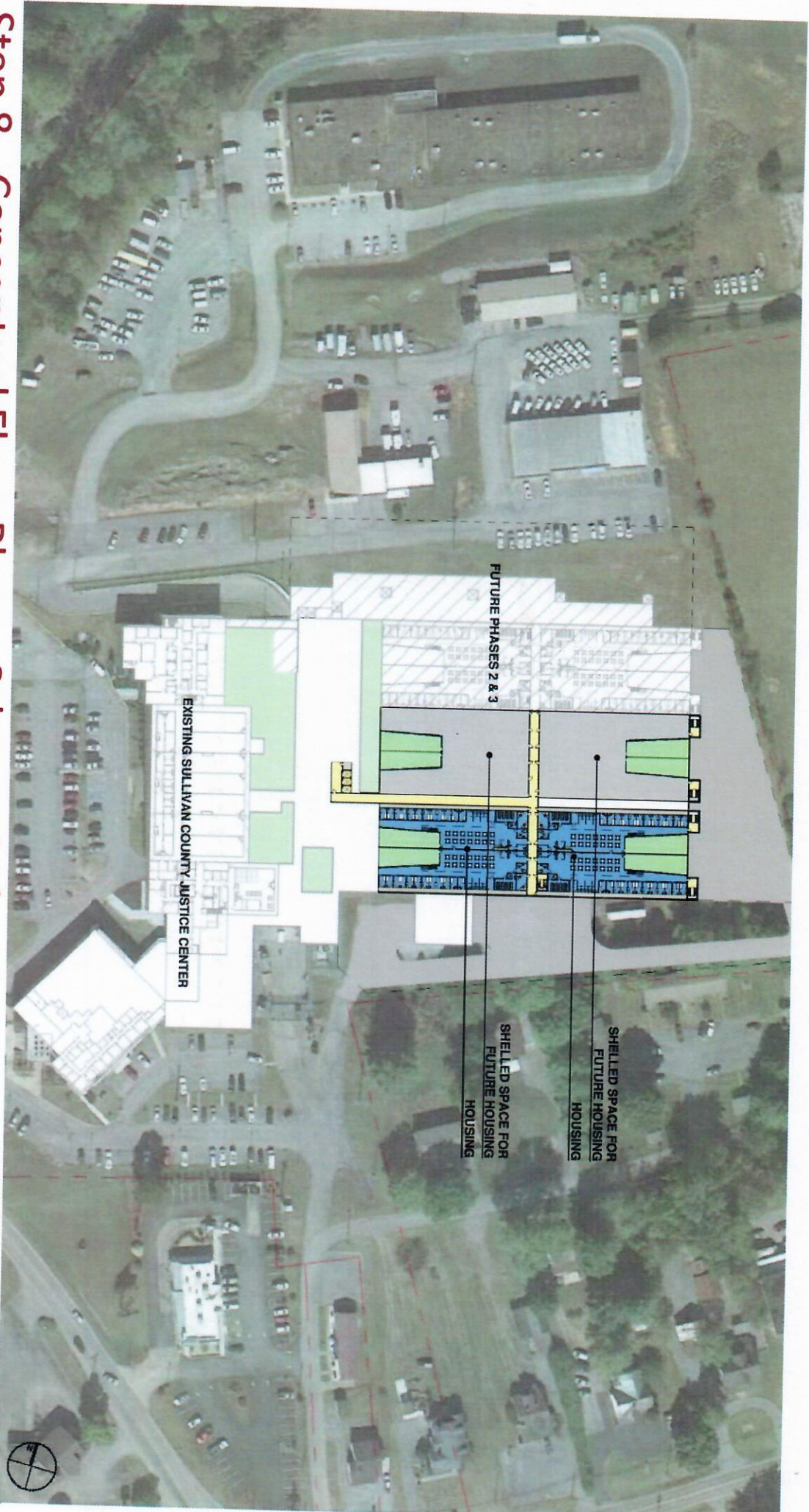


Step 8 - Conceptual Floor Plans - Scheme 6 Phase 1 - First Mezz



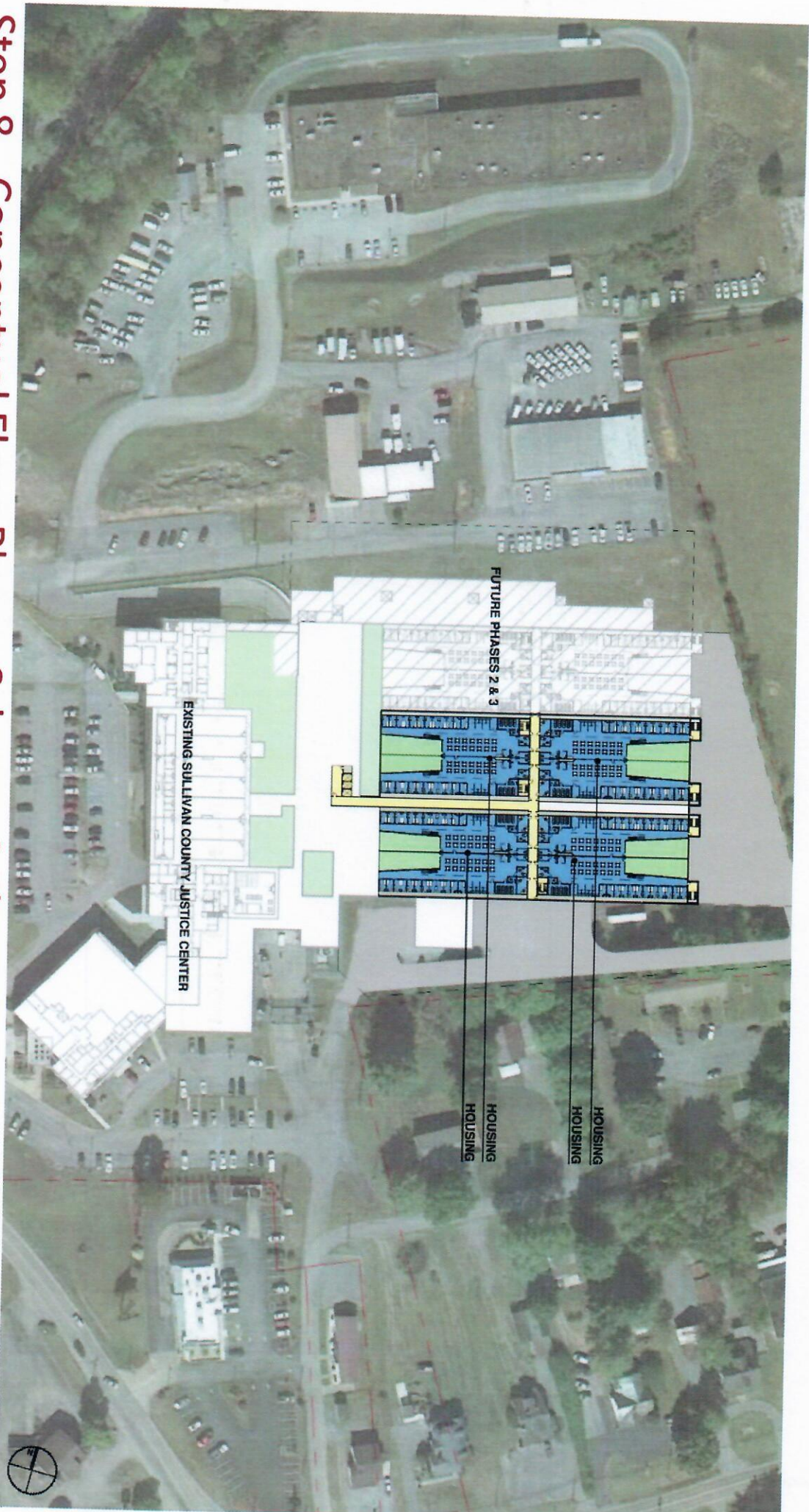


# Step 8 - Conceptual Floor Plans - Scheme 6 Phase 1 - Second Floor



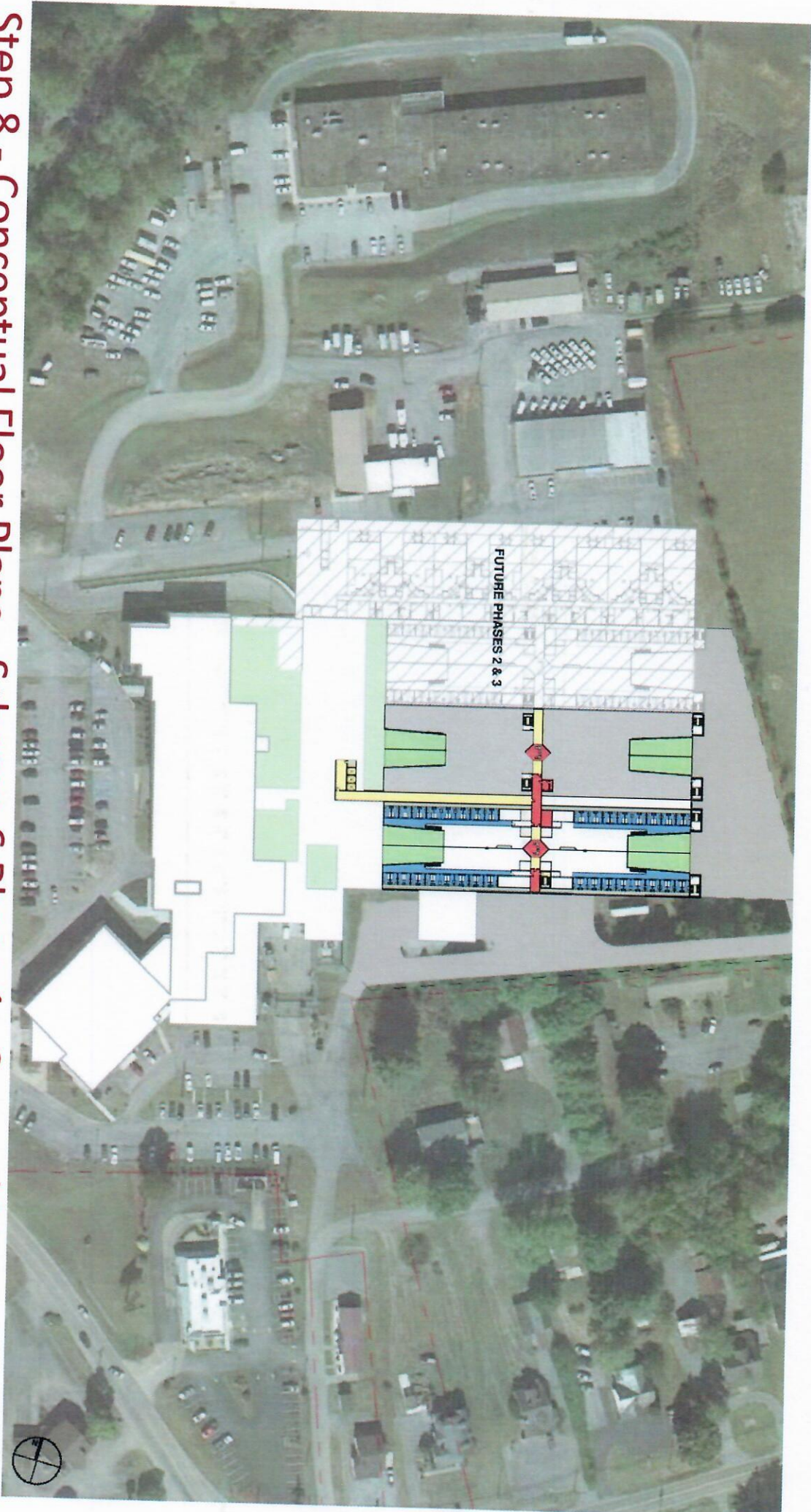


Step 8 - Conceptual Floor Plans - Scheme 6 Phase 1 - Second Floor



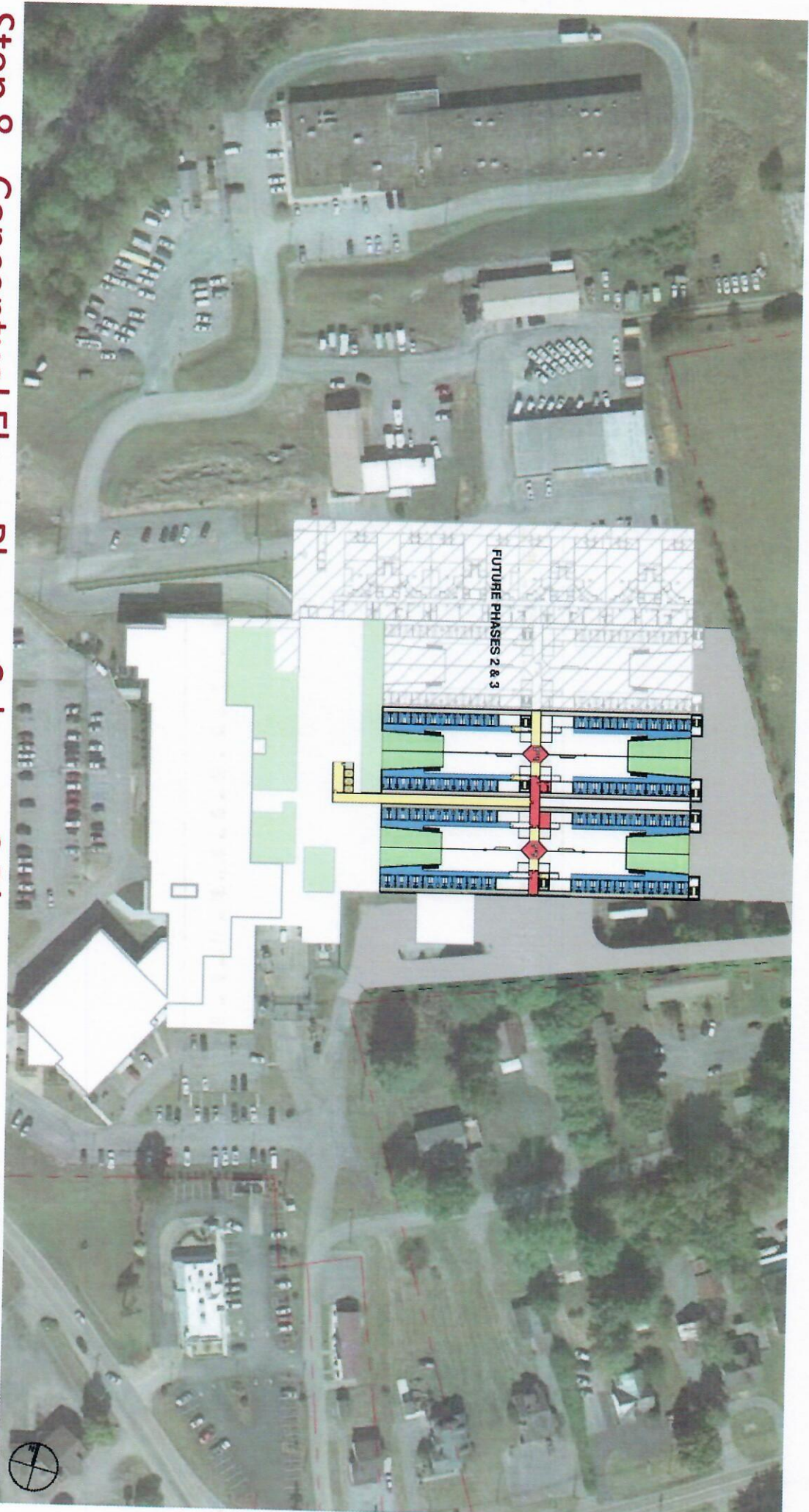


Step 8 - Conceptual Floor Plans - Scheme 6 Phase 1 - Second Mezz





Step 8 - Conceptual Floor Plans - Scheme 6 Phase 1 - Second Mezz







Step 8 - Conceptual Renderings - Scheme 6 - SW Corner View







Step 8 - Conceptual Renderings - Scheme 6 - SE Corner View







Step 8 - Conceptual Renderings - Scheme 6 - NE Corner View







Step 8 - Conceptual Renderings - Scheme 6 - NW Corner View

