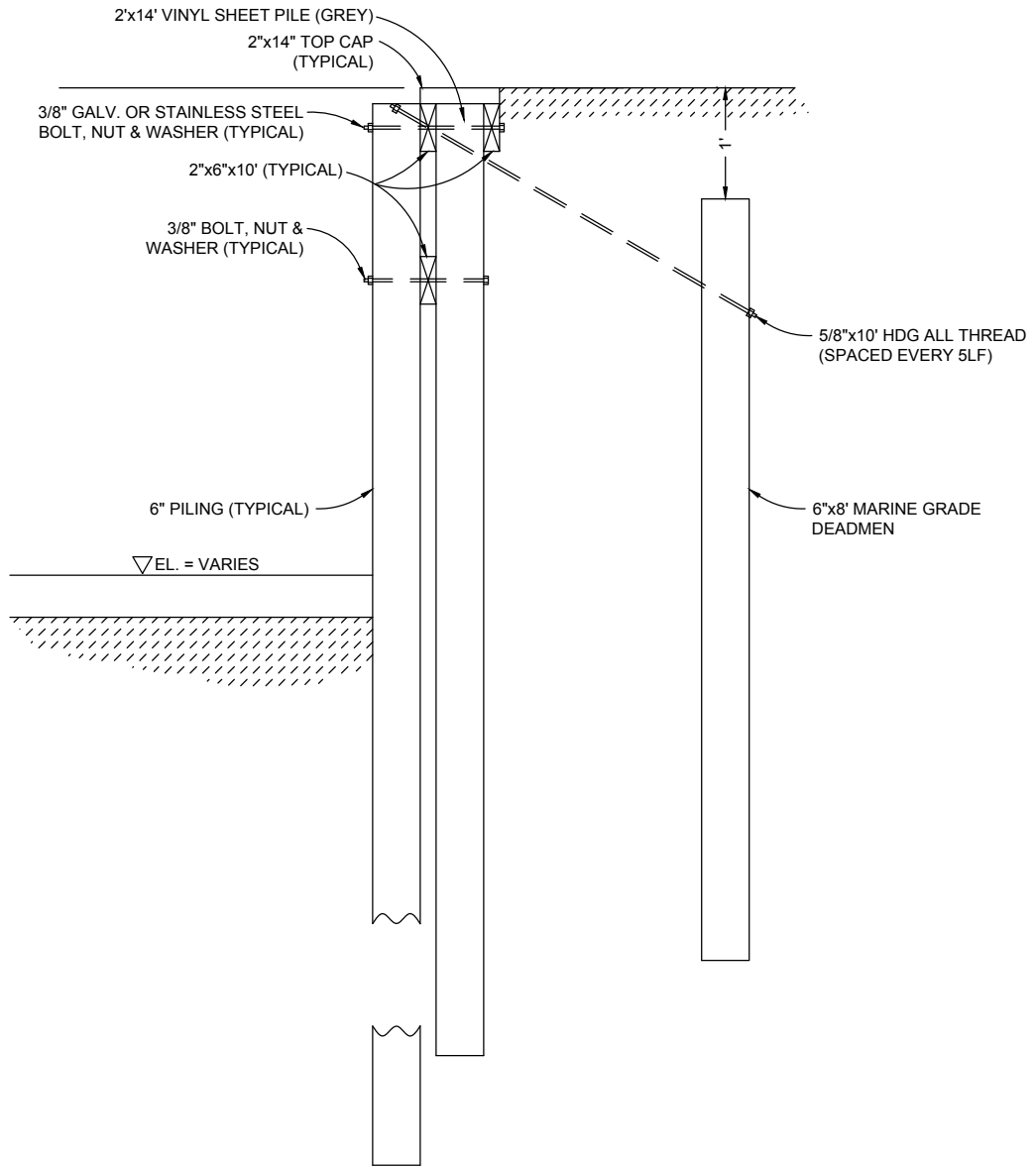


# DON'S BAYOU TYPICAL SEAWALL SECTION



**SECTION VIEW A-A**  
SCALE 1/2" = 1'

**MARINE CONSTRUCTION NOTES:**

- 1) VINYL SHEET PILE TO BE SHOREGUARD 650 OR APPROVED EQUIVALENT. DEPTH OF SHEET PILE SHALL EQUAL EXPOSURE HEIGHT.
- 2) ALL FASTENERS SHALL BE EITHER HOT-DIP GALVANIZED CONFORMING TO ASTM A153 AND ASTM A653 OR TYPE 304 AND 316 STAINLESS STEEL.
- 3) PILINGS SHALL BE 6" TIP DIAMETER OR LARGER.
- 4) PILINGS SHALL BE COMPATIBLE WITH MARINE GRADE CONSTRUCTION AND TREATED TO CCA 2.5 REQUIREMENTS.

<b>City of Fort Walton Beach</b>		
<b>GIS Division</b>		
<b>SEAWALL SECTION</b>		
APRIL 18, 2019	SHEET 1 OF 1	DRAWING # 5-256
SCALE 1/2" = 1'		

Plotted Tuesday, April 23, 2019 1:33:12 PM P:\Engineering-CD\GOLF\_COURSE\Don'sBayouSeawall.dwg