

ABBREVIATIONS

| | |
|--------|--------------------------|
| BP | BACKFLOW PREVENTER |
| CA | CEMENT ASBESTOS PIPE |
| CI | CAST IRON PIPE |
| CONC. | CONCRETE |
| EXIST. | EXISTING |
| FFE | FINISHED FLOOR ELEVATION |
| FM | FORCE MAIN |
| G | GAS |
| IE | INVERT ELEVATION |
| LF | LINEAR FEET |
| MH | MANHOLE |
| TBM | TEMPORARY BENCH MARK |
| PVC | POLYVINYL CHLORIDE PIPE |
| SS | SANITARY SEWER |
| SSMH | SANITARY SEWER MANHOLE |
| ST | STORM |
| TE | TOP ELEVATION |
| W | WATER |

LEGEND

| | |
|--|------------------------------|
| | POWER POLE |
| | FIRE HYDRANT |
| | SANITARY SEWER GRINDER PUMP |
| | SANITARY SEWER MANHOLE |
| | SANITARY SEWER CLEANOUT |
| | TERMINAL FLUSHING CONNECTION |
| | STORMWATER INLET |
| | STORMWATER MANHOLE |
| | VALVE - EXIST. |
| | VALVE - PROPOSED |
| | WATER BACKFLOW PREVENTOR |
| | WATER METER |
| | TREE - CEDAR |
| | TREE - OAK |
| | TREE - PALM |
| | CENTERLINE |
| | CONTOUR - EXIST |
| | CONTOUR - PROPOSED |
| | FENCE - CHAIN LINK |
| | FENCE - WOOD PRIVACY |
| | RIGHT-OF-WAY LINE |
| | FIRE LINE - 6" PVC |
| | FORCE MAIN - PROPOSED 2" PVC |
| | GAS MAIN |
| | IRRIGATION LINE |
| | STORMWATER DRAIN PIPE |
| | WATER LINE - PROPOSED |
| | WATER LINE - 2" |
| | WATER MAIN - 6" CA |
| | WATER MAIN - 6" CI |

FABRE ENGINEERING, INC.
DBA
FABRE ENGINEERING & SURVEYING
ENGINEERS ♦ PLANNERS ♦ SURVEYORS

119 GREGORY SQUARE PENSACOLA, FLORIDA 32502
TELEPHONE 850-434-7842
FAX 850-434-7842

L.B. NO. 0006679
E.B. NO. 0007215

SITE, GEOMETRY & DRAINAGE PLAN

This Drawing is the Property of FABRE ENGINEERING, INC. and is not to be reproduced in whole or in part without the written consent of FABRE ENGINEERING, INC. If not, submit with appropriate Release for Construction Drawing Date: _____ By: _____

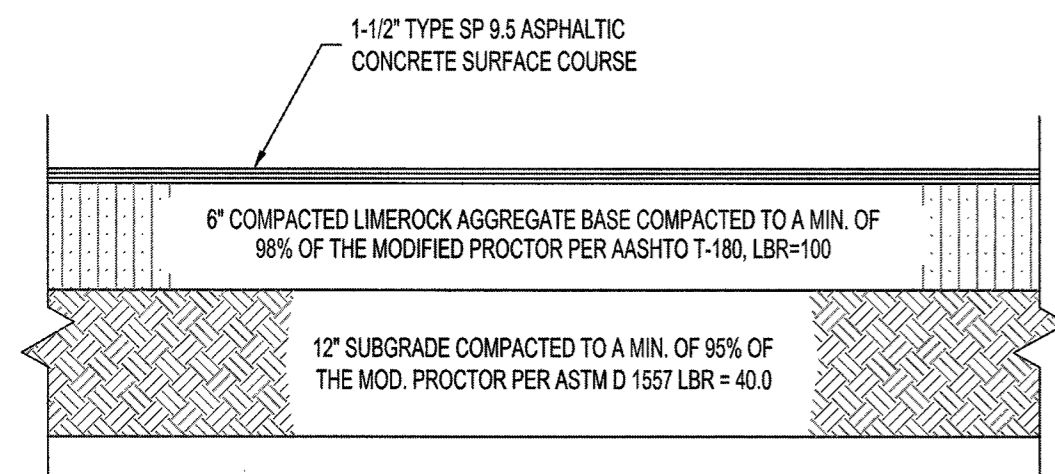
BEAL CEMETERY EXPANSION
FOR
THE CITY OF FORT WALTON BEACH
C/O DANIEL G. PAYNE
316 BEAL PARKWAY NW
FORT WALTON BEACH, FL 32548
OKALOOSA COUNTY, FLORIDA

Revisions:

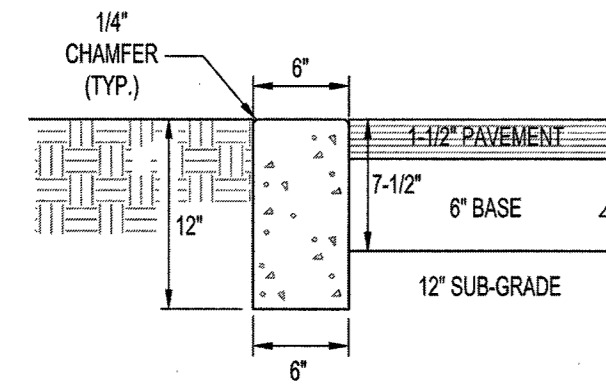
| | | |
|--|--|--|
| | | |
| | | |
| | | |
| | | |

Designed By: F.J.F.
Drawn By: JAS
Checked By: FJF
Date: November 2021
Job Number: 210043
File Name: 210043-ADMIN
Sheet: **C-1**

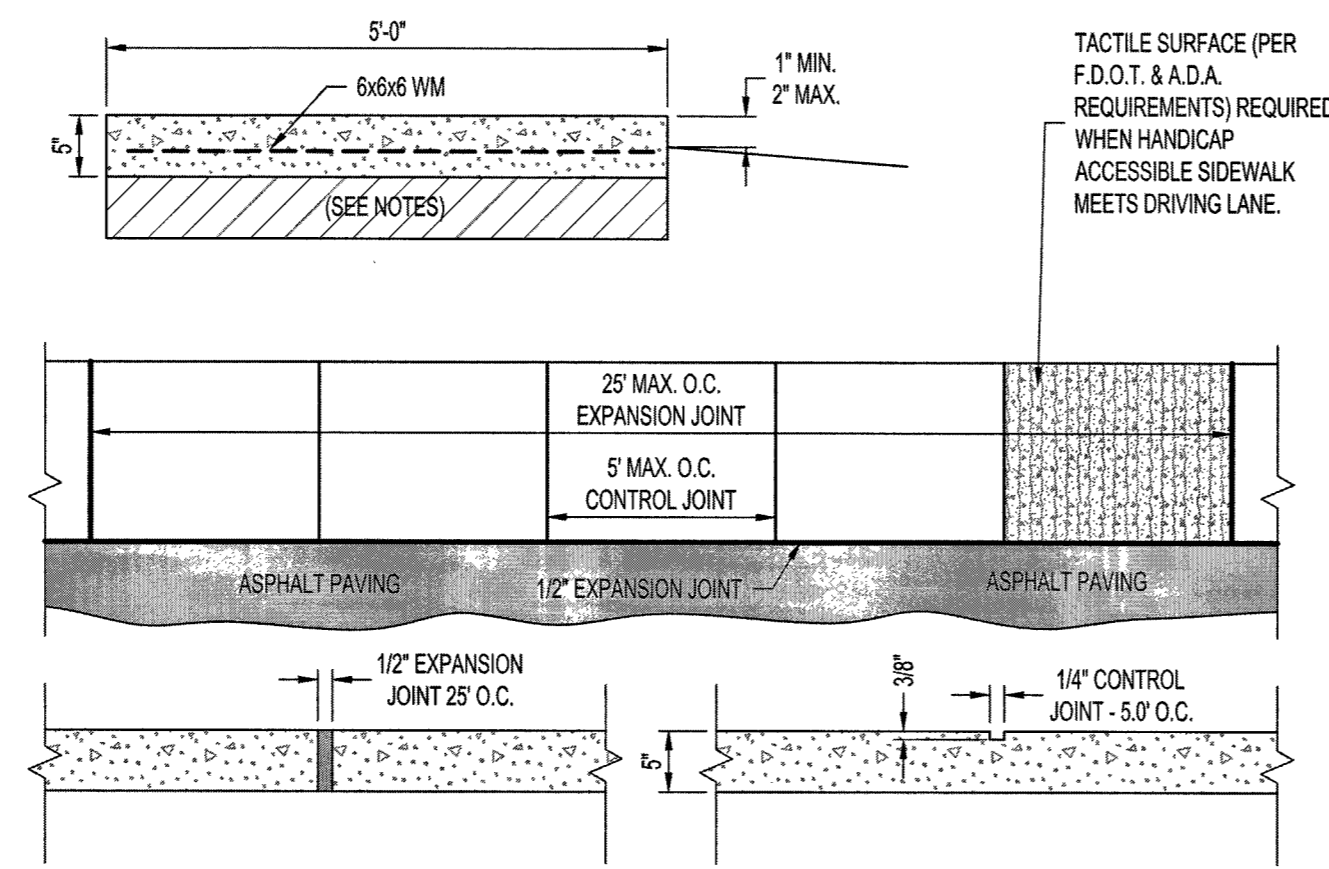
H:\2021\210043 - FWB Beal Cemetery Expansion - Payne\Drawings\ADMIN.dwg, 3/15/2022 11:28:06 AM



1-1/2" ASPHALT PAVEMENT DETAIL
NOT TO SCALE

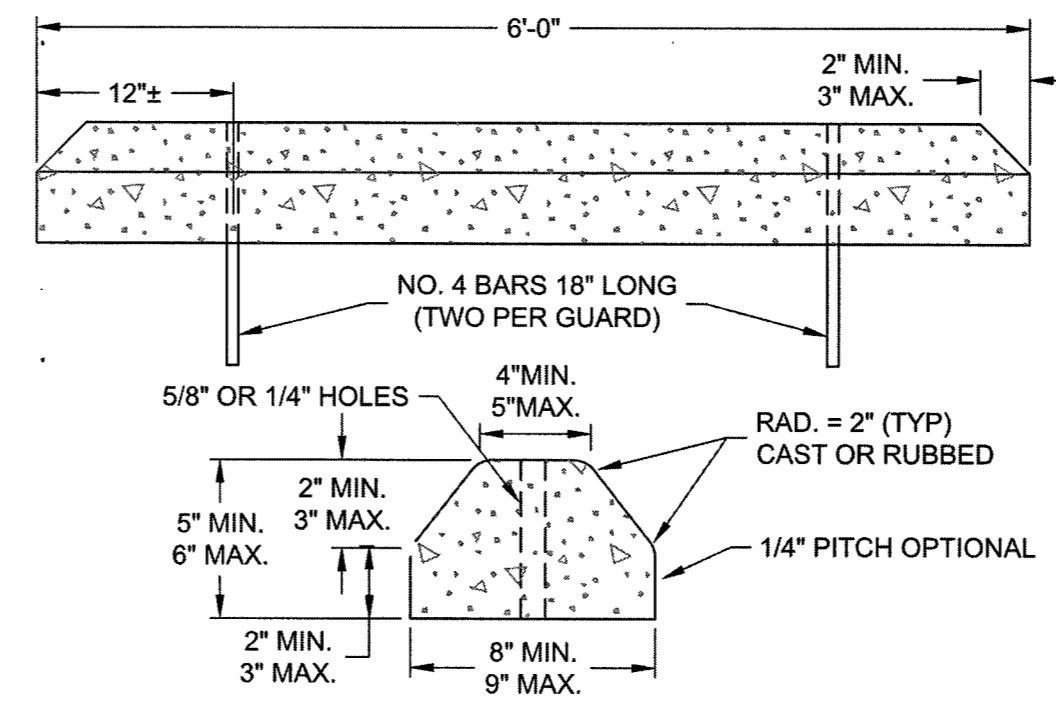


6" RIBBON CURB DETAIL
NOT TO SCALE

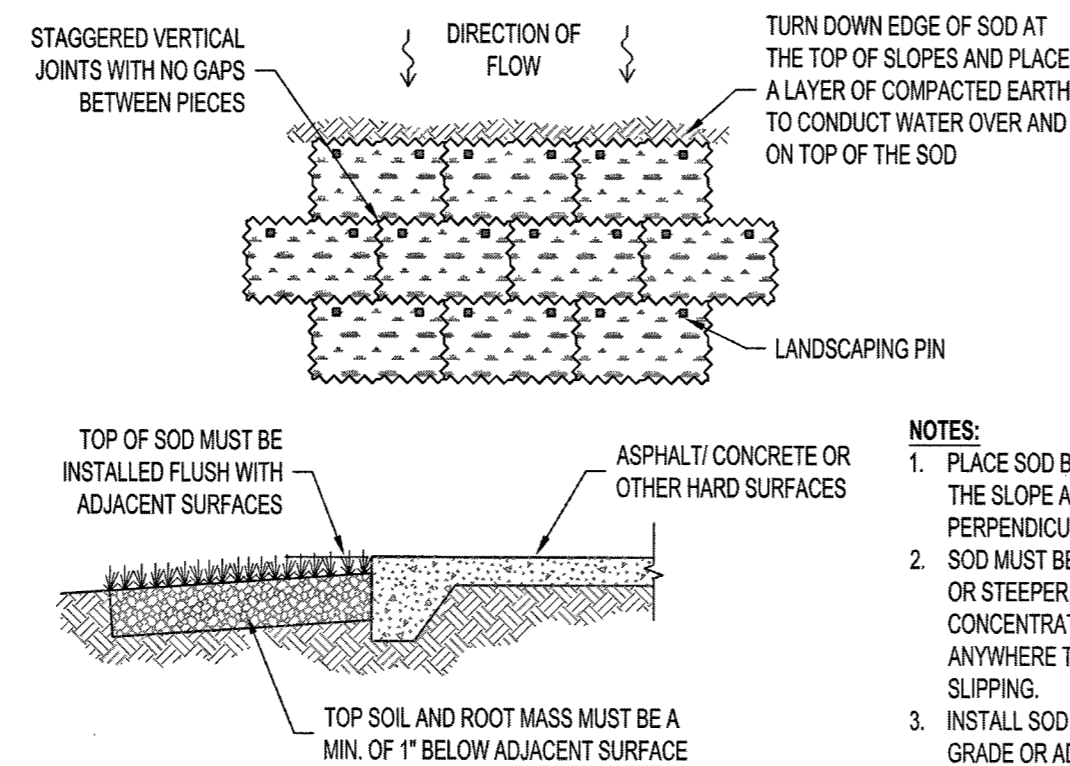


- NOTES:**
1. CONCRETE SHALL BE 3,000 P.S.I. MINIMUM.
 2. FOR PEDESTRIAN TRAFFIC AREAS PROVIDE 8" STABILIZED SUBBASE COMPACTED TO 95% MODIFIED.

CONCRETE SIDEWALK DETAIL
NOT TO SCALE



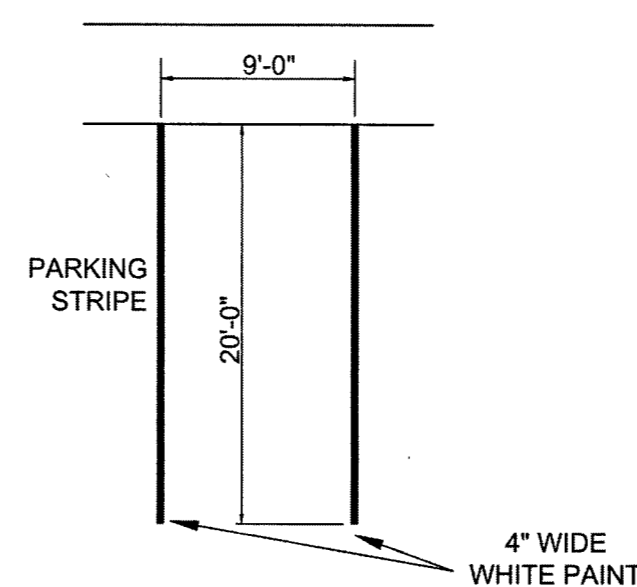
F.D.O.T. CONCRETE BUMPER GUARD
NOT TO SCALE



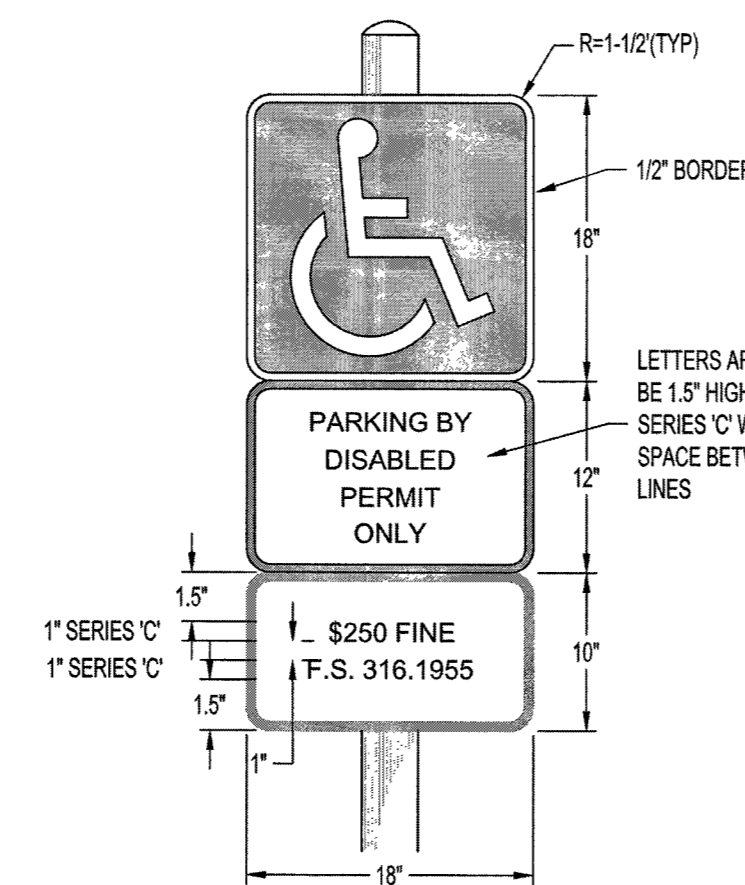
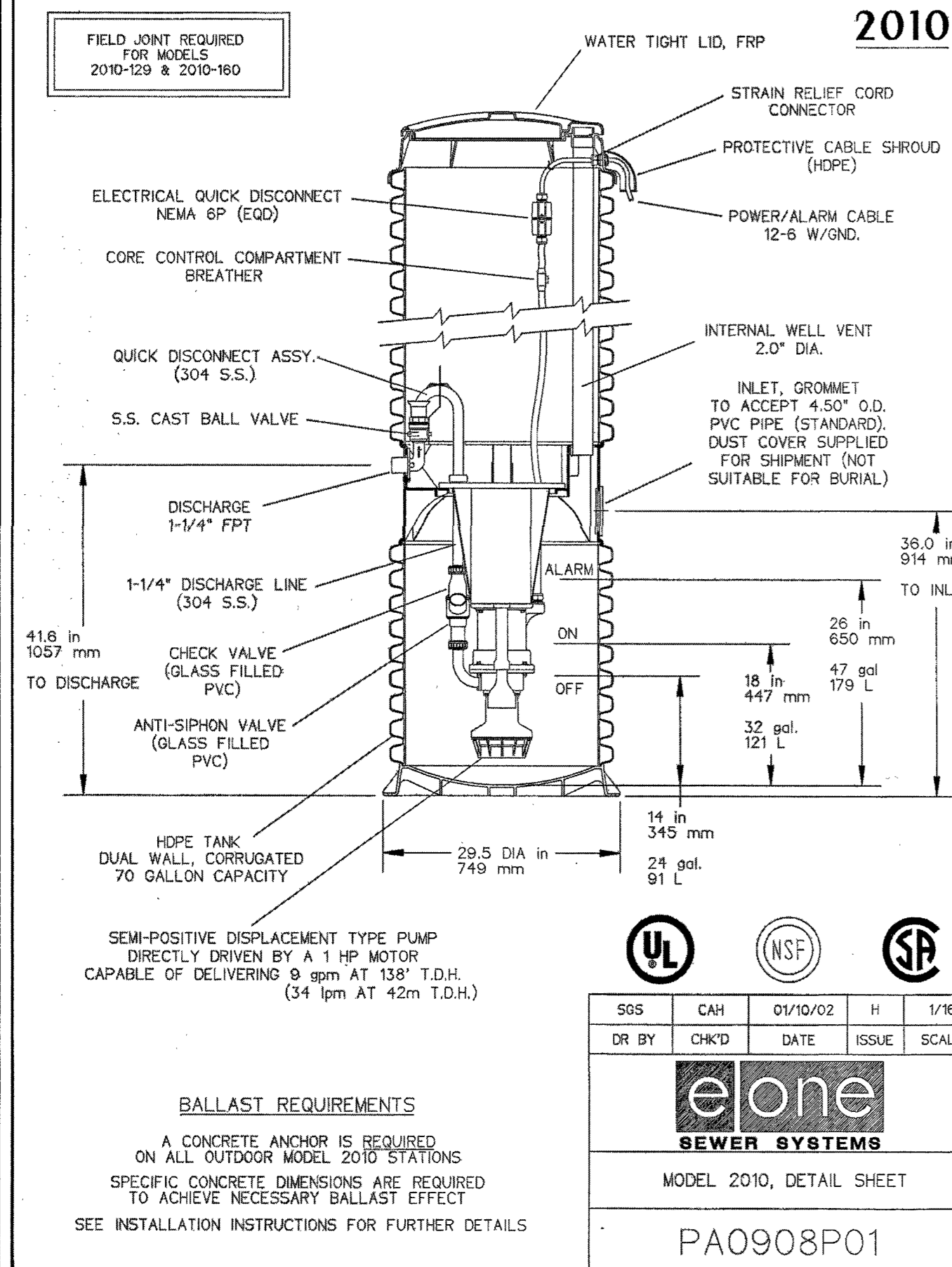
- NOTES:**
1. PLACE SOD BEGINNING AT THE TOP OF THE SLOPE AND LONG EDGE PERPENDICULAR TO DIRECTION OF FLOW.
 2. SOD MUST BE PINNED ON ALL SLOPES 4:1 OR STEEPER, IN AREAS OF CONCENTRATED DRAINAGE FLOWS, AND ANYWHERE THERE IS A DANGER OF SOD SLIPPING.
 3. INSTALL SOD EDGES FLUSH WITH FINISHED GRADE OR ADJOINING SOD.

SODDING DETAIL
NOT TO SCALE

NOTE:
ALL NON-HANDICAPPED STRIPING OR MARKINGS SHALL BE WHITE IN COLOR.

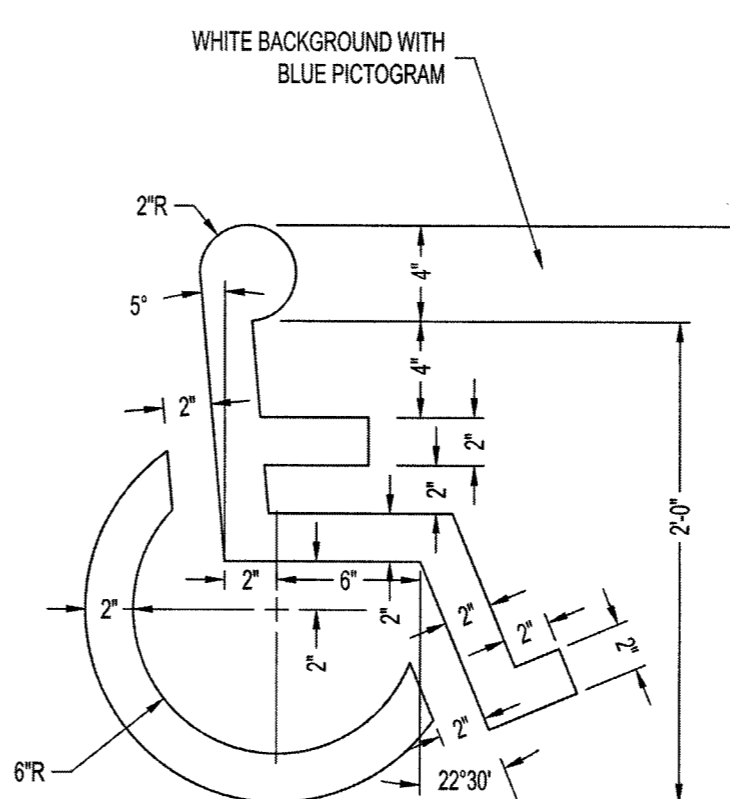


TYPICAL PARKING SPACE STRIPING DETAIL
NOT TO SCALE

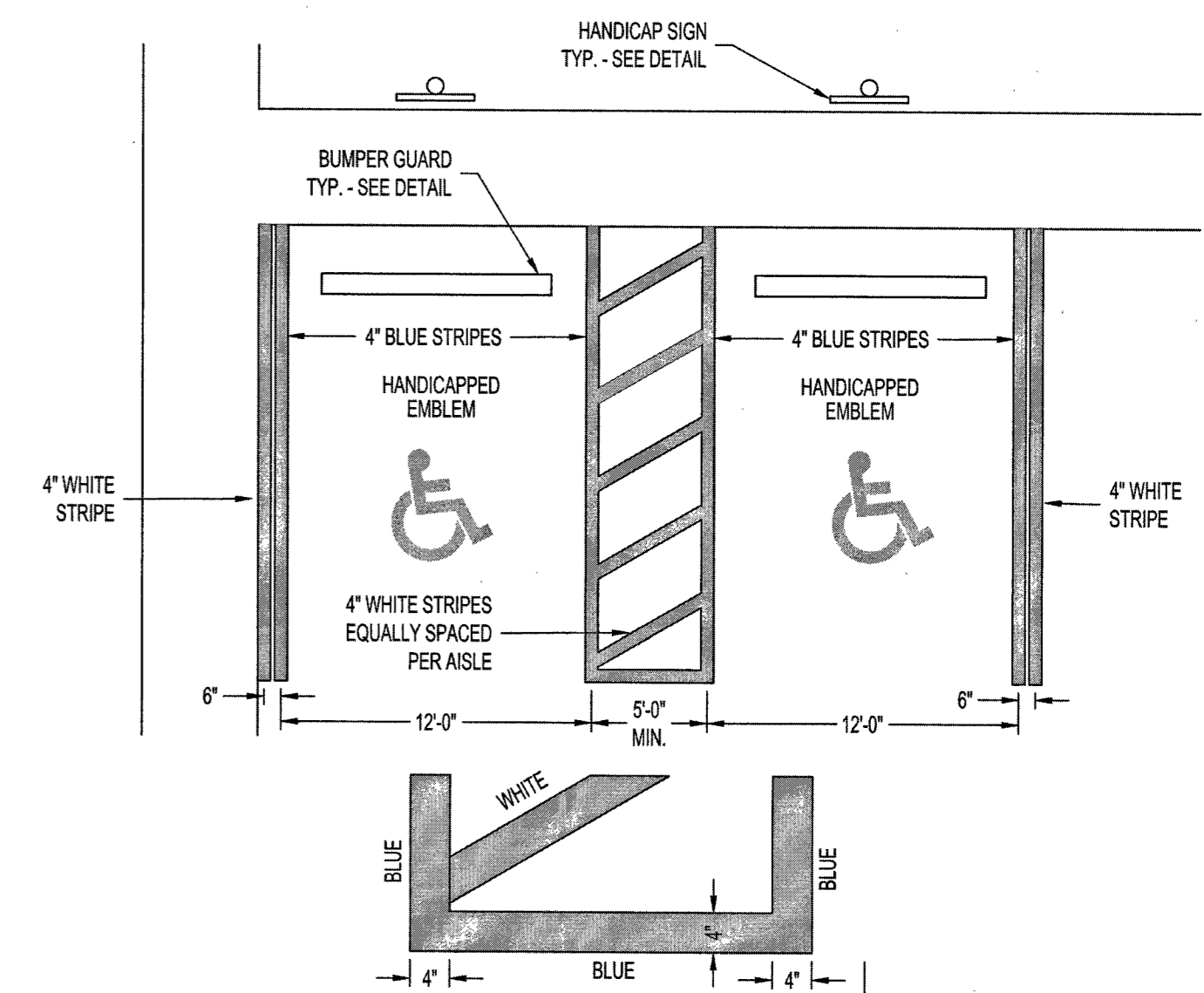


- NOTES:**
1. TOP PORTION OF SIGN SHALL HAVE A REFLECTIVE BLUE BACKGROUND W/ WHITE REFLECTIVE SYMBOL & BORDER.
 2. BOTTOM PORTION SHALL HAVE A REFLECTIVE WHITE BACKGROUND W/ BLACK OPAQUE LEGEND & BORDER.
 3. SIGN CAN BE FABRICATED ON ONE PANEL OR TWO.
 4. SIGNS USED AS PER FLORIDA STATUTES 316.1955 AND 316.1956.

HANDICAP SIGN DETAIL
NOT TO SCALE



HANDICAP EMBLEM DETAIL
NOT TO SCALE



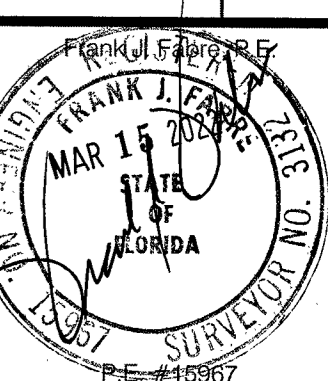
HANDICAP STRIPING DETAIL
NOT TO SCALE



SITE DETAILS

BEAL CEMETERY EXPANSION
FOR
THE CITY OF FORT WALTON BEACH
C/O DANIEL G. PAYNE
316 BEAL PARKWAY NW
FORT WALTON BEACH, FL 32548
OKALOOSA COUNTY, FLORIDA

Revisions:



Designed By:
F.J.F.
Drawn By:
JAS
Checked By:
FJF
Date:
November 2021
Job Number:
210043
File Name:
DETAILS
Sheet:
C.3

