

INTERIOR BUILDING RENOVATION IMPROVEMENTS AND EXTERIOR  
PLAYGROUND AND PARKING LOT CONSTRUCTION PLANS FOR:

# ALEXANDER II MAGNET ACADEMY

1156 COLLEGE STREET, MACON, GEORGIA

PLANS APPROVED  
SUBJECT TO ANY ITEMS NOTED  
THE APPROVAL OF PLANS AND SPECIFICATIONS DOES  
NOT PERMIT THE VIOLATION OF ANY SECTION OF THE  
LOCAL CODES AND ORDINANCES OR STATE LAW.  
BY K. Walker DATE 6/19/16  
PLANS EXAMINER

All work to Code

NOTE:  
CONSTRUCTION DOCUMENTS  
NOT REVIEWED FOR  
COMPLIANCE WITH THE  
AMERICANS WITH  
DISABILITIES ACT OF 1990.

Keep marked-up set of  
plans at the job site until  
all final inspections  
are completed.

MAY 23, 2016

ISSUE 1

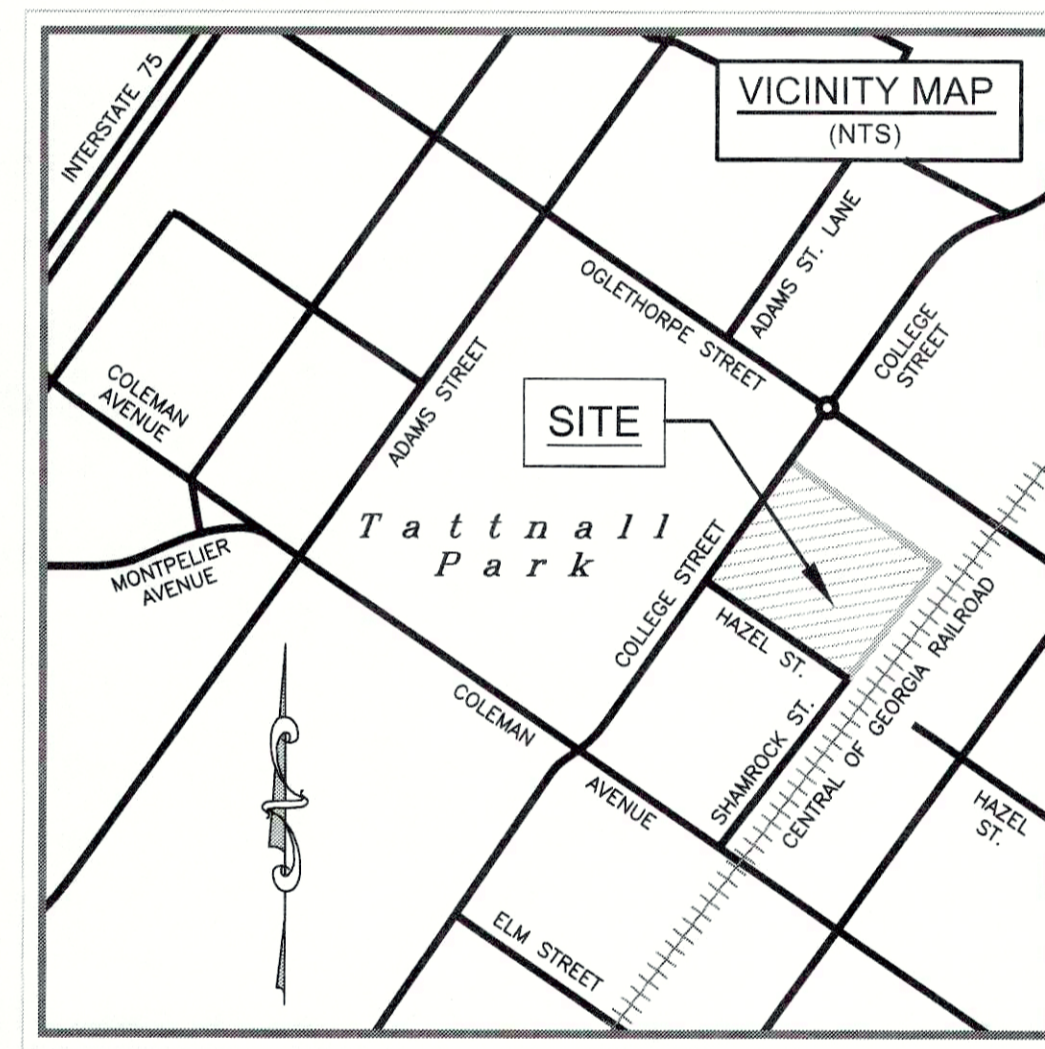
Prepared For:  
**BIBB COUNTY SCHOOL DISTRICT**  
484 Mulberry Street, Macon, Georgia 31201

24 Hour Contact Representative:  
**Mr. Jason Daniel**  
( Telephone: 478-765-8505 )

Prepared By:  
**SACAL GLOBAL SOLUTIONS**  
PLANNING, ENVIRONMENTAL, ENGINEERING,  
CONSTRUCTORS, FACILITY SUPPORT  
2153 Vineville Avenue, Macon, Georgia 31204  
[www.sacalglobal.com](http://www.sacalglobal.com)  
( Telephone: 478-745-9352 )



NOTICE: THESE CONSTRUCTION DOCUMENTS CONSIST OF  
MULTIPLE SHEETS AND IT SHALL BE THE RESPONSIBILITY OF  
THE CONTRACTOR TO HAVE A COMPLETE SET OF THE LATEST  
APPROVED PLANS FROM THE BUILDING AND ENGINEERING  
DEPARTMENTS OF THE CITY OF MACON ON SITE AT ALL TIMES  
(LATEST APPROVED COPY).



INDEX TO SHEETS

SHT. NO.	SHEET TITLE
1.0	COVER SHEET - GENERAL NOTES - VICINITY MAP CONSTRUCTION ACTIVITY SCHEDULE
2.0	OVERALL VIEW OF DEMOLITION & RENOVATION OF SPECIFIED ROOMS ON THE MAIN FLOOR LEVEL
2.1	OVERALL VIEW OF DEMOLITION & RENOVATION OF SPECIFIED ROOMS ON THE SECOND FLOOR LEVEL
3.0	DETAILED PLAN VIEW, NOTES, & SPECIFICATIONS FOR SPECIFIED ROOMS ON THE MAIN FLOOR LEVEL
3.1	DETAILED PLAN VIEW, NOTES, & SPECIFICATIONS FOR SPECIFIED ROOMS ON THE SECOND FLOOR LEVEL
3.2	MISC. DETAILS FOR INTERIOR ROOM IMPROVEMENTS
4.0 TO 4.4	SPECIFICATIONS FOR INTERIOR ROOM IMPROVEMENTS
5.0	EROSION CONTROL, GRADING AND DRAINAGE PLAN, WALL CONSTRUCTION PLAN
5.1	GENERAL CIVIL SITE CONSTRUCTION DETAILS (FOR PLAYGROUND AND PARKING LOT)
5.2	PATCHING AND SLURRY SEAL COAT LIMITS, FENCE REPLACEMENT, SIGNAGE AND STRIPING PLAN.

EROSION CONTROL PHASING NARRATIVE:

NOTICE! THE CONTRACTOR SHALL ADHERE TO THE FOLLOWING PHASES FOR INSTALLATION OF EROSION CONTROL MEASURES. FAILURE TO FOLLOW THE BELOW REQUIREMENTS SHALL BE GROUNDS FOR WORK STOPPAGE AND/OR FINES BY THE LOCAL GOVERNING BODY AND/OR THE STATE SOIL AND WATER CONSERVATION COMMISSION. IT IS STRONGLY RECOMMENDED THAT THE CONTRACTOR AND OWNER SCHEDULE A PRE-LAND DISTURBANCE MEETING WITH THE ENGINEER, LOCAL COUNTY INSPECTOR AND THE NRCS INSPECTOR TO DISCUSS THE EROSION CONTROL PHASING SEQUENCE. A MINIMUM OF 48 HRS OF PRIOR NOTIFICATION IS REQUIRED FOR THIS MEETING. BELOW IS THE PHASING SCHEDULE FOR ALL ASPECTS OF INSTALLING ANY AND ALL EROSION, SEDIMENTATION AND POLLUTION CONTROL MEASURES.

ALL E.S.P.C. MEASURES SHALL BE DONE IN ACCORDANCE WITH THE LATEST EDITION OF THE MANUAL FOR EROSION AND SEDIMENT CONTROL MEASURES IN GEORGIA AS PREPARED STATE SOIL AND WATER CONSERVATION COMMISSION AND AS DIRECTED BY LOCAL AND STATE REPRESENTATIVES.

INITIAL PHASE 1 BMP'S:

INSTALL CONSTRUCTION EXITS, ALL EXTERIOR SILT FENCING AS SHOWN AND/OR REQUIRED, ANY AND ALL TEMPORARY SEDIMENT TRAPS AND ROCK CHECK FILTER DAMS, THE INSTALLATION OF THE ABOVE PHASE 1 PROTECTIVE MEASURES SHALL BE DONE WITH THE MINIMUM AMOUNT OF MECHANIZED EQUIPMENT. MASS GRADING OF THE SITE OR EVEN THE ROADWAY LIMITS WILL NOT BE PERMITTED UNTIL ALL OF THE ABOVEMENTIONED PROTECTIVE MEASURES ARE IN PLACE AND TO THE SATISFACTION OF THE ENGINEER, LOCAL AND STATE INSPECTORS.

INTERMEDIATE PHASE 2 BMP'S:

INSTALL (AS WORK DICTATES) ALL CHECK DAMS, CHANNEL STABILIZATION MEASURES, DIVERSION BERMS, GEOTEXTILE MATTING MATERIALS, PERMANENT SEDIMENT BASINS, INTERIOR SEDIMENT BARRIERS, STORM WATER OUTLET PROTECTION AND ALL SEEDING AND PLANTING REQUIRED BY THE CONSTRUCTION SCHEDULE. ALL OF THE PHASE 2 WORK SHALL INCLUDE THE ABOVEMENTIONED, BUT NOT BE LIMITED TO, ADDITIONAL MEASURES SUCH AS PLACEMENT OF DOWNPIPE STRUCTURES, GABION OR RETAINING WALL CONSTRUCTION, LEVEL SPREADING, RETROFITTING, SURFACE ROUGHING, TOPSOILING OR TEMPORARY STREAM CROSSINGS. THE CONTRACTOR SHALL PERFORM ANY AND ALL OF THE ABOVEMENTIONED AS DIRECTED BY LOCAL OR STATE OFFICIALS.

FINAL PHASE 3 BMP'S:

FINAL SEEDING AND GRASSING PER THE CONSTRUCTION SCHEDULE, ALONG WITH ANY OTHER MEASURES AS DIRECTED BY THE ENGINEER, LOCAL AND/OR STATE INSPECTORS.

**ATTENTION!** GRADING OPERATIONS OR OTHER SOIL DISTURBING ACTIVITIES THAT ARE SUSPENDED FOR MORE THAN SEVEN (7) CALENDAR DAYS SHALL HAVE TEMPORARY VEGETATION, MULCHING, SILT FENCE AND/OR OTHER EROSION CONTROL MEASURES, AT THE DISCRETION OF THE LOCAL GOVERNING AGENCY, EMPLOYED TO PROTECT THE SOIL FROM EROSION ELEMENTS. ANY DISTURBED AREAS LEFT EXPOSED FOR A PERIOD GREATER THAN 14 DAYS SHALL BE STABILIZED WITH MULCH AND/OR TEMPORARY VEGETATION.

TYPE OF ACTIVITY	2016 CONSTRUCTION ACTIVITY SCHEDULE												
	DEC 2015	JAN 2016	FEB 2016	MAR 2016	APR 2016	MAY 2016	JUN 2016	JUL 2016	AUG 2016	SEP 2016	OCT 2016	NOV 2016	END JOB
PERFORM ALL REPAIR & RENOVATIONS TO EXIST. SPECIFIED INTERIOR ROOMS													
INSTALL THE INITIAL PHASE 1 ESPC BEST MANAGEMENT MEASURES													
INSTALL THE INTERMEDIATE PHASE 2 ESPC BEST MANAGEMENT MEASURES													
CLEARING, GRUBBING, AND GRADING													
INSTALL RETAINING WALL, SIDEWALKS AND NEW DRAINAGE STRUCTURES													
APPLY SLURRY SEAL IN EXIST. PRKG. LOT & DRIVE, RESTRIPE, PLACE SIGNS													
INSTALL LANDSCAPING, PLAYGROUND MULCHING, REPLACE SILY FENCE													
INSTALL THE FINAL PHASE 3 ESPC BEST MANAGEMENT MEASURES													
REMOVE ALL TEMPORARY ESPC BMP'S AND STABILIZE ALL DISTURBED AREAS													
MAINTAIN EROSION, SEDIMENTATION, AND POLLUTION CONTROL MEASURES													

ALEXANDER II MAGNET ACADEMY  
INTERIOR & EXTERIOR IMPROVEMENTS  
1156 College St., Macon, GA. 31201

BIBB COUNTY SCHOOL DISTRICT  
484 Mulberry St., Macon, GA. 31201 (Ph. 478-765-8711)

SACAL GLOBAL SOLUTIONS  
PLANNING, ENVIRONMENTAL, ENGINEERING, CONSTRUCTORS, FACILITY SUPPORT  
2153 VINEVILLE AVE. (PO BOX 13885), MACON, GA. 31204 (478-745-9352)



Rev/	Description	Date	Design	Chk'd
0	INITIAL SUBMITTAL ISSUE	05.16.16	TRC	HWI
1	VARIOUS MISC. PLAN REVISIONS	05.23.16	TRC	HWI



SECTION 01320 PROJECT RECORD DOCUMENTS

PART 1 GENERAL

- 1.1 Quality Assurance: A. Qualifications of Workmen: Contractor shall designate one workman in his employ who shall maintain all Project Record Documents and who shall record all changes to the original contract documents. B. Identification of Documents: All project record documents shall be clearly marked PROJECT RECORD COPY, not used for construction purposes and available to the Architect or his representative. 1.2 Submittals: A. General: At least 10 days prior to date of final inspection and as a condition of acceptance of the work, submit all project record documents to the Architect.

PART 2 PRODUCTS

- 2.1 Project Record Documents: A. Description: Project record documents include but are not limited to: 1. Drawings 2. Project Manual 3. Addenda 4. Approved Shop Drawings/Product Data 5. Change Orders 6. Field Orders 7. Construction drawings 8. Operation/Maintenance Manuals 9. Test Reports/Certifications/Inspection Reports 10. Agency Approvals secured by Contractor

PART 3 EXECUTION

- A. Marking: Mark the most appropriate document within twenty-four (24) hours of receipt of information to show. B. Method of Marking and Recording: 1. Using colored pencils for graphic work, conform to following: a. Architectural Work - Red b. Structural Work - Brown c. Mechanical Work - Green d. Electrical Work - Yellow 1. Changes made during construction. 2. Details not shown on original Contract Documents. Location of Underground Utilities and Appurtenances, Reference to permanent surface improvements. 3. Location of all Internal Utilities and Appurtenances concealed in the building structure, referenced to visible and accessible features of the structure. See paragraph 2.1 of Section 01100-Special Conditions for specific requirements. 2. Use a red pen for all written work. C. Quality Control: Documents shall be kept current; no work shall be concealed before required information has been recorded and documents shall be clearly marked "PROJECT RECORD DOCUMENTS", not used for construction purposes and available to Architect and/or his representative at all times. 1. Progress Payments nor Final Payment will not be made until Architect is satisfied that status of documents is current.

SECTION 01330 SUBMITTALS

PART 1 GENERAL

- 1.1 Quality Assurance: A. Reference Standards: Unless specifically modified hereinafter or in pertinent other sections of this Project Manual, the requirements of Article 3 of the General Conditions of the Contract for Construction, AIA Document A201, 1997 (15th) Edition shall apply and be compiled with. B. Definitions: Unless specifically noted otherwise hereinafter or in pertinent other sections of this Project Manual, all definitions shall be as enumerated in the General Conditions of the Contract for Construction, AIA Document A201, 1997 (15th) Edition. C. Submittals: Unless specifically noted otherwise in pertinent other sections of this Project Manual, make all submittals to Architect and in sufficient number as to allow the Architect to retain two (2) of the submittals. 1. Timing of Submittals: Make all submittals for enough in advance of scheduled dates of installation to allow at least ten (10) full working days for review following Architect's receipt of the submittal. 2. Delays: Cost of delays occasioned by tardiness of submittals may be back charged to the contractor and shall not be borne by the Owner. 3. All samples and shop drawings shall be routed through the Contractor to the Architect, who will return them to the Contractor for distribution. 4. All samples and shop drawings shall receive the Contractor's approval and shall bear the Contractor's approval stamp prior to submission to the Architect. Failure of the Contractor to affix his approval stamp to any submittal will be cause for rejection of the submittal by the Architect. 5. All variances from the Contract Documents shall be clearly identified by the Contractor. Submittals requiring approval of variances shall be submitted allowing fifteen (15) full working days for approval. D. Approval: Shop drawings are for the purpose of determining more details of a specific item than is shown in the contract documents. Architect's indicated approval of shop drawings does not indicate approval of changes from the contract documents included on the shop drawings unless indicated as approved for that specific change or variation.

PART 2 PRODUCTS (OMITTED)

PART 3 EXECUTION

- 3.1 Detail Requirements: D. Identification: Completely identify each submittal by showing at least the following: 1. Name and address of submitter. 2. Sheet Number and/or Project Manual Section Number to which the submittal applies. Whether the submittal is an original submittal or a resubmittal.

SECTION 01700 CONTRACT CLOSEOUT

PART 1 - GENERAL

- 1.1 SUMMARY A. This section includes administrative and procedural requirements for contract closeout, including, but not limited to, the following: 1. Inspection Procedures 2. Project Record Document Submittal 3. Operation and Maintenance Manual Submittal 4. Submittal of Warranties Final Cleaning

SECTION 01700-CONTRACT CLOSEOUT (CONTINUED)

- B. Definitions: 1. Completion Inspection: Inspection called for by contractor when the contractor believes the work required by the contract documents is 100% complete and ready for turn over to the Owner. 2. Final Inspection: Inspection at request of the contractor when all punch list items have been completed.

PART 2 - PRODUCTS

- 2.1 PROJECT AND RECORD DOCUMENTS REQUIRED FOR CLOSE OUT: A. Provide 1 copy of the following documents in 3-ring binders and 3 copies on thumb drives to be turned over to the architect for review: 1. Operation and Maintenance Manuals 2. As-Built Drawings (Including Sprinkler and Fire Alarm) 3. As-Built Specifications 4. Fire Marshal Approved Drawings and Specifications (Original) 5. Fire Marshal Approved Sprinkler Drawings (Original) 6. HVAC Certification 7. Fire Alarm Certification 8. Electrical Certification 9. Underground Water System Certification 10. Warranties 11. Fire Marshal Building Permit 12. Test and Balance Report 13. Certificate of Occupancy 14. Inventory of material to be left on site; (i.e. paint, floor/ceiling tile, carpet, base) 15. Release of Liens 16. Copy of all Change Orders with supporting data. 17. Copy of all "Approved" submittals.

PART 3 - EXECUTION

- 3.1 Final Payment will not be made until Architect and owner are satisfied that the close out documents are correct and complete.

SECTION 02821 CHAIN LINK FENCES AND GATES

Part 1. GENERAL:

- 1.1 Related Documents: A. Drawings and general provisions of the Contract, including General and Supplementary Conditions, Division 0 and Division 1 Specification Sections, apply to this Section. 1.2 Summary: A. This Section includes the following: 1. New galvanized steel chain link fence and gates for all fencing including service areas, perimeter of sit and other areas indicated on the drawings. B. Related Sections: The following sections contain requirements that relate to this section: 1. Division 2 Section 02300 - Earthwork for filling and grading work. 1.3 Submittals: A. Product Data in the form of manufacturer's technical data, specifications, and installation instructions for fence and gate posts, fabric, gates, operators, and accessories. B. Shop Drawings showing location of fence, gates, each post, and details of post installation, extension arms, gate swing, hardware, and accessories. 1.4 Quality Assurance: A. The Fence Material Manufacturer shall visit the job site and certify in writing that all materials and installation are in accordance with the Drawings and Specifications and in accordance with the manufacturer's written instructions. B. Single-Source Responsibility: Obtain chain link fences and gates as complete units, including necessary erection accessories, fittings, and fasteners from a single source or manufacturer. 1.5 Project Conditions: A. Field Measurements: Verify layout information for fences and gates shown on the Drawings in relation to the property survey and existing structures. Verify dimensions by field measurements.

2. PRODUCTS:

- 2.1 Manufacturers: A. Manufacturers: Subject to compliance with requirements, provide products by one of the following or approved equal: 1. Galvanized Steel Fencing and Fabric: -Allied Tube & Conduit -Anchor Fence, Inc. -Gregory Galvanizing -Southeastern Wire -Cyclone Fence Division/USX Corp. -Hoover Fence Company 2.2 Fabric: A. Selvage: Fabric 72 inches high and over with 2 or 1 3/4 inch mesh (but not a mixture of both) shall be knuckled at one selvage and twisted at the other; all mesh 60 inches high and under shall be knuckled at both selvages. B. Steel Chain-Link Fence Fabric: Fabricated in one-piece widths for fencing 12 feet and less in height to comply with Chain Link Fence Manufacturers Institute (CLFMI) "Product Manual" and with requirements indicated below: C. Fencing Mesh and Wire Schedule: 1. All Fencing: a. 2-inch mesh, 9 gage 2. Coating: ASTM A 817, Type 2, Class 1, zinc-coated. a. (galvanized) applied after weaving. 2.3 Finishes: A. Fabric: Not less than 1.2 oz. zinc per square foot. B. Framing: Not less than 1.8 oz. zinc per square foot. 2.4 Framing: A. Round member sizes are given in actual outside diameter (OD) to the nearest thousandth of an inch. Round fence posts and rails are often referred to in ASTM standard specifications by nominal pipe sizes (NPS) or the equivalent trade sizes in inches. The following indicates these equivalents all measured in inches. B. Strength requirements for posts and rails conforming to ASTM F 669. Pipe shall be straight, true to section, material, and sizes specified, and shall conform to the following weights per foot: NPS in Outside Diameter Type I Type II Inches (OD) in inches Steel 1 1.315 1.68 1.35 1-1/4 1.660 2.27 1.84 1-1/2 1.900 2.72 2.28 2 2.375 3.65 3.12 2-1/2 2.875 5.79 4.64 3 3.500 7.58 5.71 3-1/2 4.000 9.11 6.56 4 4.500 10.79 8 6.625 18.97 8 8.625 28.55

C. Steel Framework, General: Posts, rails, braces, and gate frames.

- 1. Type I Round Posts: Hot-dipped galvanized steel pipe conforming to ASTM F 1083, plain ends, standard weight (schedule 40) with not less than 1.8 oz. zinc per sq. ft. of surface area coated. Type II Round Posts: Manufactured from steel conforming to ASTM A 569 or A 466, grade D, cold formed, electric welded with minimum yield strength of 50,000 psi and triple coated with minimum 0.9 oz. zinc per sq. ft. after welding, a chromate conversion coating and a clear polymer overcoat. Corrosion protection on inside surfaces shall protect the metal from corrosion when subjected to the salt spray test of ASTM B 117 for 300 hours with the end point of 5 percent Red Rust.

SECTION 02821 CHAIN LINK FENCES AND GATES (CONTINUED)

- D. Roll-Formed Steel Shapes: C-sections, produced from structural steel conforming to ASTM A570, Grade D. Comply with ASTM F 1043, Material Design Group II, with minimum yield strength of 45,000 psi (310 MPa); and the following coating requirements: 1. Coating: Type A, consisting of not less than minimum 2.0-oz./sq. ft. (0.61-kg./sq.m) average zinc coating per ASTM A 123/A 123M or 4.0oz./sq. ft. (1.22-kg./sq.m) zinc coating per ASTM A 653/A653M. All Steel Frames, Fabric and Roll-Formed Shapes shall be galvanized in accordance with the finishes section of this specification. 1. Steel posts for fabric heights up to 6 feet: a. End, corner, and pull post a. Up to 6 feet: 2.375 inch OD Type I or II steel pipe. 2. Line or intermediate posts a. Up to 6 feet: 1.90 inch OD Type I or II steel pipe or rolled-formed steel C-section equivalent. F. Steel posts for fabric heights over 6 and not exceeding 12': 1. End, Corner, Pull Post, 2.875 O.D. Type I or II 2. Line or intermediate Post 2.375 O.D. Type I or II or rolled-formed steel C-section equivalent. G. Swing Gate Posts: Furnish posts to support single gate leaf, or one leaf of a double-gate installation, according to ASTM F 900, sized as follows for steel and aluminum pipe posts: 1. Steel posts for fabric height of 6 feet or less and gate leaf width: a. Over 4 to 10 Feet: 2.875-inch OD pipe weighing at least 4.64 lb per ft. H. Top Rail: Manufacturer's longest lengths (17 to 21 feet) with swaged-end or expansion-type coupling, approximately 6 inches long for joining. Provide rail ends or other means for attaching top rail securely to each gate corner, pull, and end post. 1. Round Steel: 1.660-inch OD Type I or II steel pipe or rolled formed steel 1.625"x 1.25" channel-shaped top rail. I. Center and intermediate rails, where required, shall be the same as toprail. J. Bottom rails shall be required for all tennis court fencing. 2.5 Fittings and Accessories A. Material: Comply with ASTM F 626. Mill-finished aluminum or galvanized iron or steel to suit manufacturer's standard. B. Steel and Iron: Unless specified otherwise, hot-dip galvanize pressed steel or cast-iron fence fittings and accessories with at least 1.2 oz. zinc per sq. ft. as determined by ASTM A 90. 2. Aluminum: Die cast conforming to ASTM B 26, aluminum-alloy 360 or sand cast conforming to ASTM B 85, aluminum-alloy 365, ZG61A, or Tenzalloy. B. Tie Wires: 12 gage (0.106-inch diameter) galvanized steel with a minimum of 0.80 oz. per sq. ft. of zinc coating of surface area in accordance with ASTM A 641, Class 3 or 9 gage (0.106-inch diameter) aluminum wire alloy 1100-H14 or equal, to match fabric core material. C. Post Brace Assemblies: Manufacturer's standard adjustable brace at end and gate posts and at both sides of corner and pull posts, with horizontal brace located at mid-height of fabric. Use same material as top rail for brace, and truss to line posts with 3/8-inch diameter rod and adjustable tightener. Provide manufacturer's standard galvanized steel or cast iron or cast aluminum cap for each end. D. Post and Line Caps: Provide weather tight closure cap for each post. Provide line post caps with loop to receive top rail. E. Tension or Stretcher Bars: Hot-dip galvanized steel with minimum length 2 inches less than full height of fabric, minimum cross-section of 3/16 inch by 3/4 inch and minimum 1.2 oz. zinc coating per sq. ft. of surface area. Provide one bar for each gate and end post, and two for each corner and pull post, except where fabric is integrally woven into post. F. Tension and Brace Bands: Minimum 3/4-inch wide hot-dip galvanized steel with minimum 1.2 oz. zinc coating per sq. ft. of surface area. 1. Tension Bands: Minimum 14 gage (0.074 inch) thick. 2. Tension and Brace Bands: Minimum 12 gage (0.105 inch) thick. G. Concrete: Provide concrete consisting of Portland cement, ASTM C 150, aggregates ASTM C 33, and clean water. Mix materials to obtain concrete with a minimum 28-day compressive strength of 2500 psi. Use at least 4 sacks of cement per cu. yd., 1-inch maximum size aggregate, maximum 3-inch slump, and 2 to 4 percent entrained air. H. Tension Wire: 7 gage steel, metallic-coated coil spring wire, in accordance with ASTM A 824, located at bottom of all fencing. 2.6 Gates: A. Fabrication: Fabricate perimeter frames of gates from metal and finish to match fence framework. Assemble gate frames by welding. Provide horizontal and vertical members to ensure proper gate operation and attachment of fabric, hardware, and accessories. Space frame members maximum of 8 feet apart unless otherwise indicated.

- 1. Steel: Gates up to 8 feet wide 2. Up to 6 feet high: Fabricate perimeter frames of minimum 1.660 inch OD Type I or II steel pipe or 1.90" o.d. tubular shaped steel. C. Gate Hardware: Provide hardware and accessories for each gate, galvanized per ASTM A 153 and in accordance with the following: 1. Hinges: Size and material to suit gate size, non-lift-off type, offset to permit 180-deg gate opening. Provide 1-1/2" pair of hinges for each leaf over 6-foot nominal height. 2. Latch: Forked type or plunger-bar type to permit operation from either side of gate, with padlock eye as integral part of latch. 3. Keeper: Provide keeper for gates, which automatically engages gate leaf and holds it in open position until manually released. 4. Gate Stops: Provide gate stops for the double gates, consisting of mushroom-type flush plate with anchors, set in concrete, and designed to engage center drop rod or plunger bar. Include locking device and padlock eyes as integral part of latch, permitting both gate leaves to be locked with single padlock. 1. Provide same fabric as for fence unless otherwise indicated. Install fabric with tension bars and bands at vertical edges and with tie wires at top and bottom edges. 2. Install diagonal cross-bracing consisting of 3/8 inch-diameter adjustable-length truss rods on gates to ensure frame rigidity without sag or twist. B. Swing Gates: Comply with ASTM F 900.

NOTICE: THESE CONSTRUCTION DOCUMENTS CONSIST OF MULTIPLE SHEETS AND IT SHALL BE THE RESPONSIBILITY OF THE CONTRACTOR TO HAVE A COMPLETE SET OF THE LATEST APPROVED CONSTRUCTION DOCUMENTS FROM THE BUILDING AND ENGINEERING DEPARTMENTS OF THE CITY OF MACON ON SITE AT ALL TIMES (LATEST APPROVED COPY).

SECTION 02821 CHAIN LINK FENCES AND GATES (CONTINUED)

Part 3. EXECUTION:

- 3.1 Installation A. General: Install fence in compliance with ASTM F 567. Do not begin installation and erection before final clearing and grading is completed, unless otherwise permitted. Install fabric with knuckled edge up and twisted edge at bottom where applicable. B. Excavation: Core, drill or hand-excavate (using post-hole digger) holes for posts to diameters and spacings indicated, in firm, undisturbed or compacted soil. 1. If not indicated on drawings, excavate holes for each post to minimum diameter recommended by fence manufacturer, but not less than 4 times largest cross-section of post. 2. Unless otherwise indicated, excavate hole depths approximately 3 inches lower than post bottom, with bottom of posts set not less than 36 inches below finish grade surface. 3. Core asphalt or concrete as required to install posts as indicated. C. Setting Posts: Center and align posts in holes 3 inches above bottom of excavation. Space maximum 10 feet o.c., unless otherwise indicated. 1. Protect portion of posts above ground from concrete splatter. Place concrete around posts and vibrate or tamp for consolidation. Check each post for vertical and top alignment, and hold in position during placement and finishing operations. a. Unless otherwise indicated, extend concrete footings 2 inches above grade and trowel to a crown to shed water. D. Top Rails: Run rail continuously through line post caps, bending to radius for curved runs and at other posts terminating into rail end attached to posts or post caps fabricated to receive rail. Provide expansion couplings as recommended by fencing manufacturer. E. Brace Assemblies: Install braces at end and gateposts and at both sides of corner and pull posts. Locate horizontal braces at mid height of fabric on fences with top rail and at two-thirds fabric height on fences without top rail. Install so posts are plumb when diagonal rod is under proper tension. F. Fabric: Leave approximately 1 inch between finish grade and bottom selvage unless otherwise indicated. Pull fabric taut and tie to post, rails, and tension wires. Install fabric on fence posts as follows: 1. Mechanical Yards: Exterior of mechanical yards. 2. Property Line: Exterior of site. G. Tension or Stretcher Bars: Thread through or clamp to fabric 4 inches o.c., and secure to end, corner, pull, and gate posts with tension bands spaced not over 15 inches o.c. H. Tie Wires: Use U-shaped wire of proper length to secure fabric firmly to posts and rails with ends twisted at least 2 full turns. Bend ends of wire to minimize hazard to persons or clothing. 1. Maximum Spacing: Tie fabric to line posts 12 inches o.c. and to rails and braces 24 inches o.c. Tie fabric to gate frames 6" o.c. I. Fasteners: Install nuts for tension bands and hardware bolts on side of fence opposite fabric side. Peen ends of bolts or score threads to prevent removal of nuts. J. Tension Wire: Thread tension wire through bottom of fabric, pull taut and secure wire to post. K. Install safety caps on top rails in accordance with manufacturer's recommendations. 3.2 Gate Installation A. Gates: Install gates plumb, level, and secure for full opening without interference. Install ground-set items in concrete for anchorage. Adjust hardware for smooth operation and lubricate where necessary.

SECTION 07900 SEALANTS AND CAULKING

PART 1 GENERAL

- 1.1 Quality Assurance: A. Industry Standards: 1. Some products and execution are specified in this section by reference to published specifications or standards (with respective abbreviations used); these referenced publications may be subject to special conditions or limitations where specified hereinafter. 2. Reference Publications: American Society for Testing and Materials (ASTM). Federal Specifications (FS). 1.2 Definitions: A. Sealant: A weatherproof elastomer used in filling and sealing joints, having properties of adhesion, cohesion, extensibility under tension, compressibility and recovery. B. Caulk: Term used to denote the process of filling and sealing the joints, without regard to type of material. 1.3 Submittals: A. General: Make submittals in accordance with Section 01330. B. Product Data: Manufacturer's detailed descriptive and specification data for each type of sealant and joint filler described hereinafter; furnish color card showing full range of colors available. C. Samples: For each type and color of sealant required accompanied by sample of joint filler. 1.4 Product Handling: A. Delivery: Deliver the products of this section in manufacturer's original unopened packaging with labels intact and legible. B. Storage and Protection: Store and protect products of this section in accordance with manufacturer's instructions. 1.5 Job Conditions: A. Temperature: Do no caulking if ambient temperature is 32 degree F or below. 12009 Alexander II Magnet School Bibb Co. Board of Education 07900 - 1

PART 2 PRODUCTS

- 2.1 Materials: A. Sealants: 1. Type 1: Single-component polyurethane, gun-grade, complying with F TTS-00230C, Type II, Class A, color as selected by Architect. 2. Type 2: One-component acetoxy silicone, complying with FS TT-S001543A, Type Non-Sag, Class A; white color. 3. Type 3: Acrylic latex, gun grade, paintable, complying with ASTM C834-86; white color. 4. Type 4: Oleo-resinuous compound, gun grade, non-staining, non-shrinking, and non-sagging, complying with FS TT-C-598B. 5. Type 5: One-part silicone rubber, non-slump, conforming to ASTM E81488, UL rated for rating of construction with which used. 6. Type 6: One-part non-hardening, non-drying, non-bleeding, and nonstaining acoustical sealant of synthetic rubber.

REFER TO SHT 4.1 FOR CONTINUATION OF SECTION 07900 SEALANTS AND CAULKING

24 HOUR CONTACT: MR. JASON DANIEL PHONE: (478) 765-8505

ALEXANDER II MAGNET ACADEMY INTERIOR & EXTERIOR IMPROVEMENTS 1156 College St., Macon, GA. 31201

SPECIFICATIONS FOR INTERIOR ROOM IMPROVEMENTS

SACAL GLOBAL SOLUTIONS PLANNING, ENVIRONMENTAL, ENGINEERING, CONSTRUCTION, FACILITY SUPPORT 2153 VINEVILLE AVE. (P.O. BOX 13885) MACON, GA 31204 (478-746-9892)

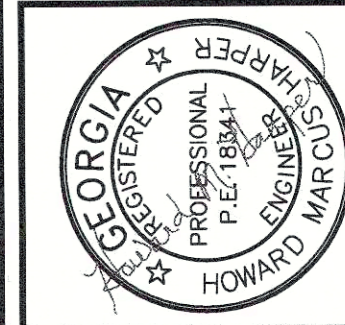


Table with columns: Rev, Revision, Description, Date, Design/Checked, Date, Issue, Date, Issue, Date, Issue. Row 1: 0 INITIAL SUBMITTAL ISSUE 05.16.16 TRC HWH. Row 2: 1 VARIOUS MISC. PLAN REVISIONS 05.23.16 TRC HWH.



**GENERAL NOTES:**

1. CAUTION, UNDERGROUND SERVICE ALERT! THE CONTRACTOR SHALL TELEPHONE TOLL FREE GEORGIA 811 A MINIMUM OF 48 HOURS PRIOR TO THE START OF ANY EXCAVATION AS SHOWN AND NOTED ON THE APPROVED PLANS.
2. ALL NECESSARY PERMITS TO PERFORM THE WORK AS SHOWN AND NOTED HEREON SHALL BE OBTAINED PRIOR TO THE START OF CONSTRUCTION FROM THE LOCAL ISSUING AUTHORITY, GA. STATE DOT AND/OR OTHER GOVERNMENTAL AGENCIES.
3. ALL CONSTRUCTION SHALL CONFORM TO ALL APPLICABLE RULES, REGULATIONS AND STANDARDS OF THE LOCAL ISSUING AUTHORITY, GEORGIA STATE DEPT. OF TRANSPORTATION (DOT) AND/OR OTHER GOVERNMENTAL AGENCIES.
4. UNDERGROUND UTILITY LINE LOCATIONS (IF ANY) ARE APPROXIMATE ONLY, AND IT SHALL BE THE RESPONSIBILITY OF THE CONTRACTOR TO DETERMINE THE EXACT LOCATION OF ANY SUCH UTILITIES. THE CONTRACTOR SHALL VERIFY LOCATIONS OF WATER, SANITARY SEWER AND POWER UTILITIES SHOWN ON PLANS ARE FOR THE CONTRACTOR'S CONVENIENCE ONLY. THE ENGINEER ASSUMES NO RESPONSIBILITY TO VERIFY ALL UTILITY LOCATIONS. CONTRACTOR IS SOLELY RESPONSIBLE FOR ALL DAMAGES TO EXISTING UTILITIES. THE CONTRACTOR SHALL NOTIFY THE ENGINEER IMMEDIATELY IF ANY EXISTING UTILITIES WILL EFFECT OR IMPEDE THE PROGRESSION OR COMPLETION OF THE DESIGN INTENT OF THESE CONSTRUCTION DOCUMENTS.
5. THE PROPERTY AS SHOWN HEREON IS NOT WITHIN A 100-YEAR FLOODPLAIN AREA.
6. THE CONTRACTOR SHALL COORDINATE RELOCATION OF ANY EXISTING UTILITIES WITH THE APPROPRIATE UTILITY ENTITY PRIOR TO THE START OF ANY CONSTRUCTION. THE COSTS FOR ANY AND ALL RELOCATION OF UTILITIES SHALL BE THE RESPONSIBILITY OF THE OWNER-DEVELOPER.
7. THE OWNER AND/OR THE APPLICABLE LOCAL ISSUING AGENCY INSPECTOR SHALL DIRECT THE CONTRACTOR AS TO WHAT EXISTING VEGETATION ON SITE SHALL BE REMOVED BEYOND THE CLEARING LIMITS AS SHOWN AND NOTED HEREON. THE CONTRACTOR SHALL EXERCISE EXTREME CAUTION IN PROTECTING EXISTING TREES. COORDINATE ALL TREE REMOVAL WITH OWNER PRIOR TO THE START OF ANY CONSTRUCTION.
8. MISCELLANEOUS MAPPING NOTES:
  - A. UTILITIES SHOWN ARE LOCATIONS OF GROUND IDENTIFIABLE ITEMS. ADDITIONAL UTILITIES MAY EXIST ABOVE OR BELOW THE GROUND. THE ENGINEER ACCEPTS NO RESPONSIBILITY FOR THE COMPLETENESS OF THIS DATA.
  - B. THIS PROPERTY IS SUBJECT TO ALL RIGHT-OF-WAYS & EASEMENTS SHOWN OR NOT SHOWN, RECORDED OR NOT RECORDED.
  - C. THE CONTRACTOR SHALL REMOVE AND ABANDON EXISTING UTILITIES ONLY AFTER APPROVAL FROM ALL INTERESTED PARTIES. THESE FACILITIES MAY INCLUDE, BUT NOT BE LIMITED TO: EXISTING ON-SITE DRAINAGE PIPING, ON-SITE PRIVATE ELECTRICAL LINES AND APPURTENANCES, ABANDONED EROSION CONTROL DEVICES AND STRUCTURES. THE CONTRACTOR SHALL COORDINATE ANY AND ALL ABANDONMENT AND/OR RELOCATION WITH THE APPROPRIATE UTILITY COMPANIES OR ENTITY. ANY DISPOSAL OF SAID FACILITIES SHALL BE DONE IN ACCORDANCE WITH LOCAL UTILITY AND/OR GOVERNMENTAL REGULATIONS. RELOCATION AND/OR ABANDONMENT OF SAID FACILITIES AND/OR UTILITIES SHALL BE DONE AT THE EXPENSE OF THE OWNER/DEVELOPER. PERMITS (IF ANY) SHALL BE OBTAINED BY THE CONTRACTOR AND/OR OWNER/DEVELOPER.
  - D. IF SHALL BE THE RESPONSIBILITY OF THE CONTRACTOR TO INSURE THAT PRIOR TO ORDERING PROJECT MATERIALS, THAT THE MOST CURRENT SET OF CONSTRUCTION DOCUMENTS HAVE BEEN OBTAINED FROM THE PROJECT ENGINEER INCLUDING, BUT NOT LIMITED TO, THE PERMITTED SET(S) FROM ALL APPLICABLE AGENCIES AS APPROPRIATE. THE PROJECT ENGINEER SHALL ACCEPT NO RESPONSIBILITY FOR IMPROPER ORDERING OF MATERIALS.
  - E. ALL CONSTRUCTION MUST CONFORM TO THE APPLICABLE LOCAL ISSUING AUTHORITIES AND/OR GEORGIA DOT STANDARDS AND SPECIFICATIONS, WHETHER OR NOT REVIEW COMMENTS WERE MADE.
  - F. ALL SILT BARRIERS MUST BE PLACED AS ACCESS IS OBTAINED DURING CLEARING. NO GRADING SHALL BE DONE UNTIL PERIMETER BMP'S INSTALLATION AND DETENTION FACILITIES (IF APPLICABLE) ARE CONSTRUCTED.
  - G. SILT BARRIERS TO BE PLACED AS SHOWN AND/OR AS DIRECTED BY PROJECT ENGINEER, INSPECTOR, OR BY THE OWNER.
  - H. NOTIFY THE JURISDICTIONAL INSPECTOR 24 HOURS PRIOR TO CONSTRUCTION.
  - I. NO VEGETATIVE OR DEBRIS BURIAL PITS ARE ALLOWED ON THIS PROJECT SITE.
  - J. THE OWNER/DEVELOPER AND ENGINEER HAVE REVIEWED THE APPROPRIATE LOCAL, STATE, AND FEDERAL REGULATIONS REGARDING DEVELOPMENT ACTIVITIES ADJACENT TO FLOOD PLAINS AND WETLANDS AND HAVE DETERMINED THAT THIS DEVELOPMENT PLAN SATISFIES THE STANDARDS PRESENTED IN APPLICABLE REGULATIONS.
  - K. NEW WATER AND SANITARY SEWER SERVICES (IF APPLICABLE) WILL BE PROVIDED BY THE LOCAL ISSUING AUTHORITIES.
  - L. ALL VEHICULAR SIGNING AND STRIPING REQUIRED BY THE COUNTY TO BE PROVIDED BY THE DEVELOPER ACCORDING TO M.U.T.C.D. SPECIFICATIONS.
  - M. NOTICE: ALL CONSTRUCTION PROJECT SITES SHALL HAVE PERMITS POSTED ON SITE WITHIN AN APPROVED PERMIT BOX (SUCH AS THE PLASTIC BOXES FOR PERMITTED CONSTRUCTION PROJECTS. THE PERMIT BOXES MUST BE VISIBLE FROM THE ROAD THAT IMMEDIATELY ACCESSES THE PROPOSED CONSTRUCTION. THE INSPECTOR WILL NOT PERFORM ANY INSPECTION IF THE SITE DOES NOT HAVE THE PERMIT PROPERLY POSTED.

**GRADING NOTES:** (PLACEMENT AND COMPACTION)

1. GROUND SURFACE PREPARATION: REMOVE VEGETATION INCLUDING GRASS, ROOTS, AND SURFICIAL ORGANICS, DEBRIS, UNSATISFACTORY SOIL MATERIALS, OBSTRUCTIONS, AND DELETED MATERIALS FROM GROUND SURFACE PRIOR TO PLACEMENT OF FILLS. FLOW STRIP, OR BREAK UP SLOPED SURFACES STEEPER THAN 1 VERT. TO 2 HORIZ. SO THAT FILL MATERIAL WILL BOND WITH EXISTING SURFACE. WHEN EXISTING GROUND SURFACE HAS A DENSITY LESS THAN THAT SPECIFIED UNDER COMPACTION FOR PARTICULAR AREA CLASSIFICATION, BREAK UP GROUND SURFACE, PULVERIZE, MOISTURE CONDITION TO OPTIMUM MOISTURE CONTENT, AND COMPACT TO REQUIRED DEPTH AND PERCENTAGE OF MAXIMUM DENSITY.
2. PLACE BACKFILL AND FILL MATERIALS IN LAYERS NOT MORE THAN 12 INCHES IN LOOSE DEPTH FOR MATERIAL COMPACTED BY HEAVY COMPACTION EQUIPMENT AND NOT MORE THAN 6 INCHES IN LOOSE DEPTH FOR MATERIAL COMPACTED BY HAND OPERATED TAMPERS.
3. BEFORE COMPACTION, MOISTEN AND AERATE EACH LAYER AS NECESSARY TO PROVIDE OPTIMUM MOISTURE CONTENT. COMPACT EACH LAYER TO 95% MODIFIED PROCTOR DENSITY. DO NOT PLACE BACKFILL OR FILL MATERIAL ON SURFACES THAT ARE MUDDY, FROZEN OR CONTAIN FROST OR ICE.
4. COMPACT SUBGRADE AND EACH LAYER OF BACKFILL OF FILL MAT'L. TO AT LEAST 95 % OF THE MODIFIED PROCTOR DENSITY TO A DEPTH OF 12".
5. MOISTURE CONTROL: WHERE SUBGRADE OR LAYER OF SOIL MATERIAL MUST BE MOISTURE CONDITIONED BEFORE COMPACTION, UNIFORMLY APPLY WATER TO SURFACE OF SUBGRADE OR LAYER OF SOIL MAT'L. APPLY WATER IN MINIMUM QUANTITY AS NECESSARY TO PREVENT FREE WATER FROM APPEARING ON SURFACE DURING OR SUBSEQUENT TO COMPACTION OPERATIONS.
6. REMOVE AND REPLACE, OR SCARIFY AND AIR DRY, SOIL MATERIAL THAT IS TOO WET TO PERMIT COMPACTION TO SPECIFIED DENSITY.
7. SPREAD SOIL MATERIAL THAT HAS BEEN REMOVED BECAUSE IT IS TOO WET TO PERMIT COMPACTION. ASSIST DRYING BY DISCING, HARROWING, OR PULVERIZING UNTIL MOISTURE CONTENT IS REDUCED TO A SATISFACTORY VALUE.
8. QUALITY CONTROL TESTING DURING CONSTRUCTION: ALLOW GEOTECHNICAL TESTING SERVICE TO INSPECT AND APPROVE EACH SUB-GRADE AND BACKFILL OR FILL LAYER BEFORE FURTHER BACKFILL OR CONSTRUCTION WORK IS PERFORMED. TEST SHALL BE PERFORMED EVERY 10,000 SQ. FT. OF AREA PER ONE FOOT LIFT (OR AS DIRECTED BY A REGISTERED GEOTECHNICAL ENGINEER).
9. GEOTECHNICAL SPEC'S DEPICTED HEREON ARE GUIDELINES ONLY AND SHOULD BE VERIFIED BY A REGISTERED GEOTECHNICAL ENGINEER PRIOR TO THE COMMENCEMENT OF CONSTRUCTION. RECOMMENDATIONS FROM A REGISTERED GEOTECHNICAL ENGINEER (IF ANY) SHALL SUPERSEDE THE ABOVE REFERENCED SPEC'S.
10. THE CONTRACTOR SHALL IMMEDIATELY NOTIFY THE OWNER OF THE DISCOVERY OF ANY GROUNDWATER, SUB-SURFACE SEEPAGE OR SPRINGS DURING THE COURSE OF CONSTRUCTION. IT SHALL BE THE RESPONSIBILITY OF THE OWNER TO CONSULT WITH A REGISTERED GEOTECHNICAL ENGINEER TO INSPECT THE SITE, AND TO MAKE ANY RECOMMENDATIONS REGARDING EVIDENCE AND REMEDIATION (IF ANY) OF SAID SUB-SURFACE WATERS.
11. ALL CUT AND FILL SLOPES SHALL BE LESS THAN OR EQUAL TO 3:1. DETENTION POND INSIDE SLOPES SHALL ALSO BE 3:1.

**CONTRACTOR NOTE:**

1. ANY CITY, COUNTY OR STATE OWNED INFRASTRUCTURE OR PROPERTY DAMAGED DURING, OR AS A RESULT OF CONSTRUCTION OF THIS PROJECT WILL BE REPAIRED OR REPLACED TO THE SATISFACTION OF SAID JURISDICTIONAL AUTHORITY: THIS INCLUDES, FOR EXAMPLE (BUT IS NOT LIMITED TO) PAVING, CURB AND GUTTER, SHOULDERS, DITCHES, STORM DRAINAGE PIPES OR STRUCTURES, SIGNS, WATER DISTRIBUTION LINES AND RELATED APPURTENANCES, WASTEWATER AND/OR SANITARY SEWER LINES AND RELATED APPURTENANCES, LANDSCAPING OR PLANTING ALONG WITH ALL OTHER RELATED ITEMS ASSOCIATED WITH LANDSCAPING, SUCH AS IRRIGATION SYSTEMS AND ANY PUBLIC FENCING WITHIN THE RIGHT-OF-WAY.

**CONSTRUCTION STANDARDS NOTE:**

NOTICE! ALL CONSTRUCTION, GRADING, INSTALLATION OF ALL NEW ON-SITE INFRASTRUCTURE AND MATERIALS FOR SAME, AND ANY OFF-SITE PUBLIC IMPROVEMENTS PROPOSED AS A PART OF THIS DEVELOPMENT SHALL BE INSTALLED IN ACCORDANCE WITH ALL RULES, REGULATIONS, STANDARDS AND SPECIFICATIONS OF THE LOCAL ISSUING AUTHORITY AND GEORGIA DOT (IF APPLICABLE), INCLUDING THE LATEST REVISED EDITION OF LOCAL ISSUING AUTHORITY STD DETAILS. IT SHALL BE THE SOLE RESPONSIBILITY OF THE CONTRACTOR TO HAVE A COPY OF THE LATEST REVISED EDITION OF SAID STANDARD DETAILS.

**NOTICE:** THESE CONSTRUCTION DOCUMENTS

CONSIST OF MULTIPLE SHEETS AND IT SHALL BE THE RESPONSIBILITY OF THE CONTRACTOR TO HAVE A COMPLETE SET OF THE LATEST APPROVED CONSTRUCTION DOCUMENTS FROM THE BUILDING AND ENGINEERING DEPARTMENTS OF THE CITY OF MACON ON SITE AT ALL TIMES (LATEST APPROVED COPY).



**CAUTION! UNDERGROUND AND OVERHEAD**  
Call Before You Dig! Underground Service Alert!  
**UTILITIES PROTECTION CENTER, INC.**  
CALL: 1-800-282-7411 THROUGHOUT GEORGIA  
(Outside Georgia Call Collect 770-325-5000)



- NOTE:**
1. THE EXISTING PLAYGROUND IS PROPOSED TO BE EXPANDED TO APPROXIMATELY TWICE THE EXISTING AREA.
  2. ELEVATION OF THE TOP AND BOTTOM OF EXIST. WALL SHALL BE DETERMINED.
  3. ANY DRAINAGE INLETS, DOWNSPOUTS, DISCHARGE POINTS AND EXISTING PIPES WITHIN THE LIMITS OF SURVEY SHALL HAVE TOPS AND INVERTS VERIFIED.
  4. THE EXISTING CONCRETE WALKWAYS AND CONCRETE SLAB SHALL BE PROTECTED FROM DAMAGE. THE EXISTING BLACK IRON FENCE SHALL BE REMOVED AND SALVAGED TO A LOCATION AS DIRECTED BY THE SCHOOL PRINCIPAL.
  5. THE EXISTING ASPHALT PARKING LOT AND DRIVEWAY IS SLATED TO HAVE THE EXISTING SMALL STRESS FRACTURES SEALED AND THAT SAME AREA WILL BE SLURRY SEALED (ASPHALTIC EMULSION) AND THEN RE-STRIPPED (WITH NEW SIGNAGE AS REQUIRED). THIS WORK SHALL BE DONE UNDER THESE PLANS.
  6. THE EXISTING OLD BROKEN DOWN CHAIN LINK FENCE SOUTHERLY OF THE PLAYGROUND AREA AND IMMEDIATELY ADJACENT TO THE EXISTING RAIL ROAD SHALL BE REMOVED AND A NEW FENCE SHALL BE INSTALLED IN KIND AND IN THE SAME LOCATION (FROM APPROXIMATELY HAZEL STREET TO OGLETHORPE STREET).
  7. THE BASE TOPOGRAPHIC MAP INDICATING THE EXISTING CONDITIONS (I.E. EXISTING CURB AND GUTTER, EXISTING CONTOURS, BUILDINGS, UTILITIES, ETC) WAS PREPARED BY CARTER AND SLOOPE, CIVIL ENGINEERS AND LAND SURVEYORS FOR BRITTAUN, THOMPSON, BRAY AND YOUNG, DATED JULY, 2002

**EROSION CONTROL PHASING NARRATIVE:**

NOTICE! THE CONTRACTOR SHALL ADHERE TO THE FOLLOWING PHASES FOR INSTALLATION OF EROSION CONTROL MEASURES. FAILURE TO FOLLOW THE BELOW REQUIREMENTS SHALL BE GROUNDS FOR WORK STOPPAGE AND/OR FINES BY THE LOCAL GOVERNING BODY AND/OR THE STATE SOIL AND WATER CONSERVATION COMMISSION. IT IS STRONGLY RECOMMENDED THAT THE CONTRACTOR AND OWNER SCHEDULE A PRE-LAND DISTURBANCE MEETING WITH THE ENGINEER, LOCAL COUNTY INSPECTOR AND THE NRCS INSPECTOR TO DISCUSS THE EROSION CONTROL PHASING SEQUENCE. A MINIMUM OF 48 HRS OF PRIOR NOTIFICATION IS REQUIRED FOR THIS MEETING. BELOW IS THE PHASING SCHEDULE FOR ALL ASPECTS OF INSTALLING ANY AND ALL EROSION, SEDIMENTATION AND POLLUTION CONTROL MEASURES. ALL E.S.P.C. MEASURES SHALL BE DONE IN ACCORDANCE WITH THE LATEST EDITION OF THE MANUAL FOR EROSION AND SEDIMENT CONTROL MEASURES IN GEORGIA AS PREPARED STATE SOIL AND WATER CONSERVATION COMMISSION AND AS DIRECTED BY LOCAL AND STATE REPRESENTATIVES.

**INITIAL PHASE 1 BMP's:**

INSTALL CONSTRUCTION EXITS, ALL EXTERIOR SILT FENCING AS SHOWN AND/OR REQUIRED, ANY AND ALL TEMPORARY SEDIMENT TRAPS AND ROCK CHECK FILTER DAMS. THE INSTALLATION OF THE ABOVE PHASE 1 PROTECTIVE MEASURES SHALL BE DONE WITH THE MINIMUM AMOUNT OF MECHANIZED EQUIPMENT. MASS GRADING OF THE SITE OR EVEN THE ROADWAY LIMITS WILL NOT BE PERMITTED UNTIL ALL OF THE ABOVEMENTIONED PROTECTIVE MEASURES ARE IN PLACE AND TO THE SATISFACTION OF THE ENGINEER, LOCAL AND STATE INSPECTORS.

**INTERMEDIATE PHASE 2 BMP's:**

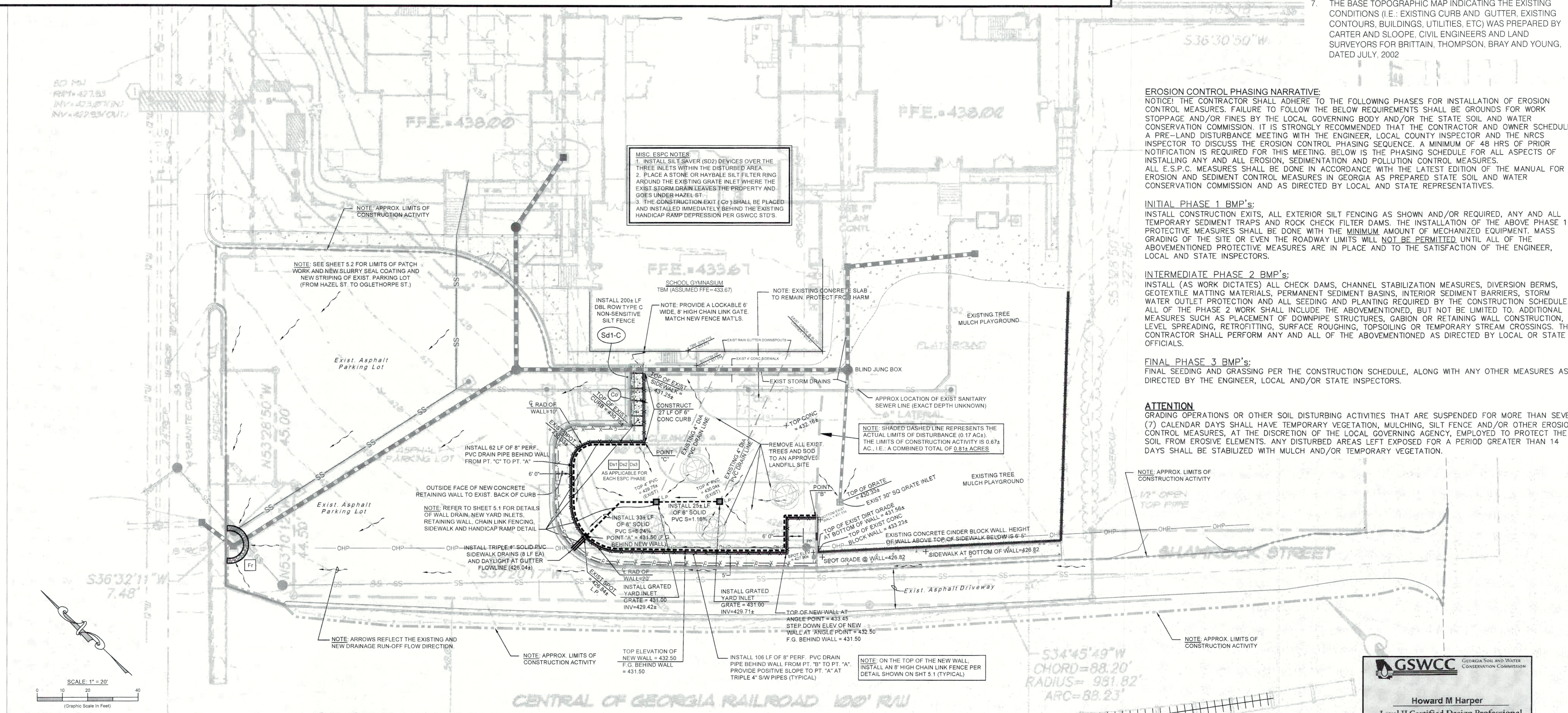
INSTALL (AS WORK DICTATES) ALL CHECK DAMS, CHANNEL STABILIZATION MEASURES, DIVERSION BERMS, GEOTEXTILE MATTING MATERIALS, PERMANENT SEDIMENT BASINS, INTERIOR SEDIMENT BARRIERS, STORM WATER OUTLET PROTECTION AND ALL SEEDING AND PLANTING REQUIRED BY THE CONSTRUCTION SCHEDULE. ALL OF THE PHASE 2 WORK SHALL INCLUDE THE ABOVEMENTIONED, BUT NOT BE LIMITED TO: ADDITIONAL MEASURES SUCH AS PLACEMENT OF DOWNPIPE STRUCTURES, GABION OR RETAINING WALL CONSTRUCTION, LEVEL SPREADING, RETROFITTING, SURFACE ROUGHING, TOPSLOPING OR TEMPORARY STREAM CROSSINGS. THE CONTRACTOR SHALL PERFORM ANY AND ALL OF THE ABOVEMENTIONED AS DIRECTED BY LOCAL OR STATE OFFICIALS.

**FINAL PHASE 3 BMP's:**

FINAL SEEDING AND GRASSING PER THE CONSTRUCTION SCHEDULE, ALONG WITH ANY OTHER MEASURES AS DIRECTED BY THE ENGINEER, LOCAL AND/OR STATE INSPECTORS.

**ATTENTION**

GRADING OPERATIONS OR OTHER SOIL DISTURBING ACTIVITIES THAT ARE SUSPENDED FOR MORE THAN SEVEN (7) CALENDAR DAYS SHALL HAVE TEMPORARY VEGETATION, MULCHING, SILT FENCE AND/OR OTHER EROSION CONTROL MEASURES, AT THE DISCRETION OF THE LOCAL GOVERNING AGENCY, EMPLOYED TO PROTECT THE SOIL FROM EROSION ELEMENTS. ANY DISTURBED AREAS LEFT EXPOSED FOR A PERIOD GREATER THAN 14 DAYS SHALL BE STABILIZED WITH MULCH AND/OR TEMPORARY VEGETATION.



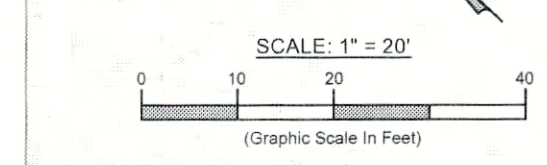
**NOTE: SHADDED DASHED LINE REPRESENTS THE ACTUAL LIMITS OF DISTURBANCE (0.17 AC.).**  
THE LIMITS OF CONSTRUCTION ACTIVITY IS 0.671 AC. I.E. A COMBINED TOTAL OF 0.841 ACRES

**NOTE: ON THE TOP OF THE NEW WALL, INSTALL AN 8" HIGH CHAIN LINK FENCE PER DETAIL SHOWN ON SHT 5.1 (TYPICAL)**

**NOTE: APPROX. LIMITS OF CONSTRUCTION ACTIVITY**

**NOTE: APPROX. LIMITS OF CONSTRUCTION ACTIVITY**

**NOTE: APPROX. LIMITS OF CONSTRUCTION ACTIVITY**



**24 HOUR CONTACT:**  
**MR. JASON DANIEL**  
**PHONE: (478) 765-8505**

EXISTING RAILROAD TRACKS

**GSWCC** GEORGIA SOIL AND WATER CONSERVATION COMMISSION

**Howard M Harper**  
Level II Certified Design Professional

CERTIFICATION NUMBER: 0000002124  
ISSUED: 02/14/2016 EXPIRES: 02/14/2019

**SACAL** SACAL GLOBAL SOLUTIONS  
PLANNING, ENVIRONMENTAL ENGINEERING, CONSTRUCTION, FACILITY SUPPORT  
2163 VINEVILLE AVE. (PO BOX 18886) MACON, GA 31204 (478-765-9382)

**GEORGIA REGISTERED PROFESSIONAL ENGINEER**  
HOWARD HARPER

Rev.	Description	Date	Design	CHK'd
0	INITIAL SUBMITTAL ISSUE	05.16.16	TRC	HHW
1	VARIOUS MISC. PLAN REVISIONS	09.23.16	TRC	HHW

PEF-006832

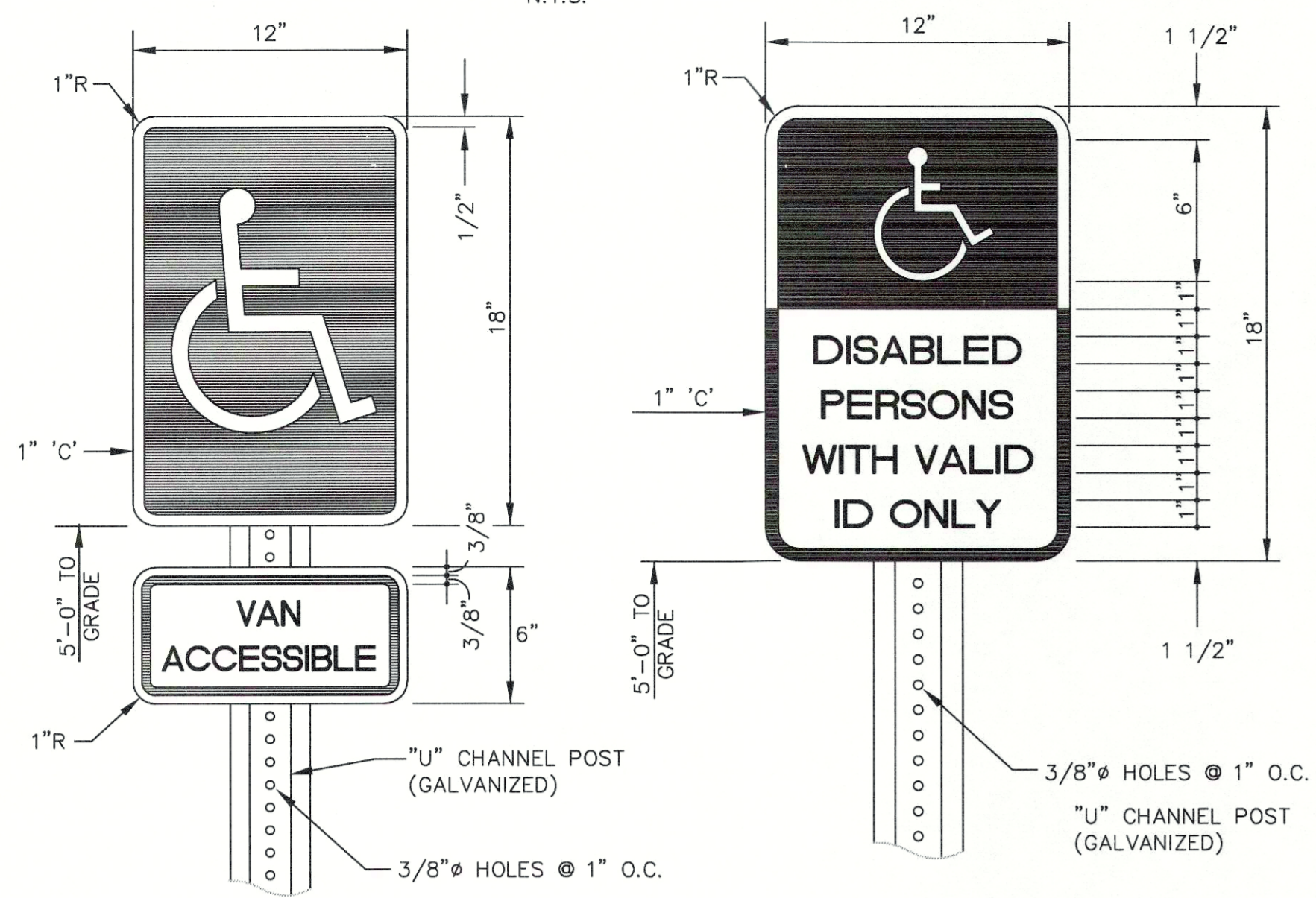
**SHEET 5.0 OF 14**

**ALEXANDER II MAGNET ACADEMY**  
INTERIOR & EXTERIOR IMPROVEMENTS  
1156 College St., Macon, GA. 31201  
XXXX Militia District, County, State

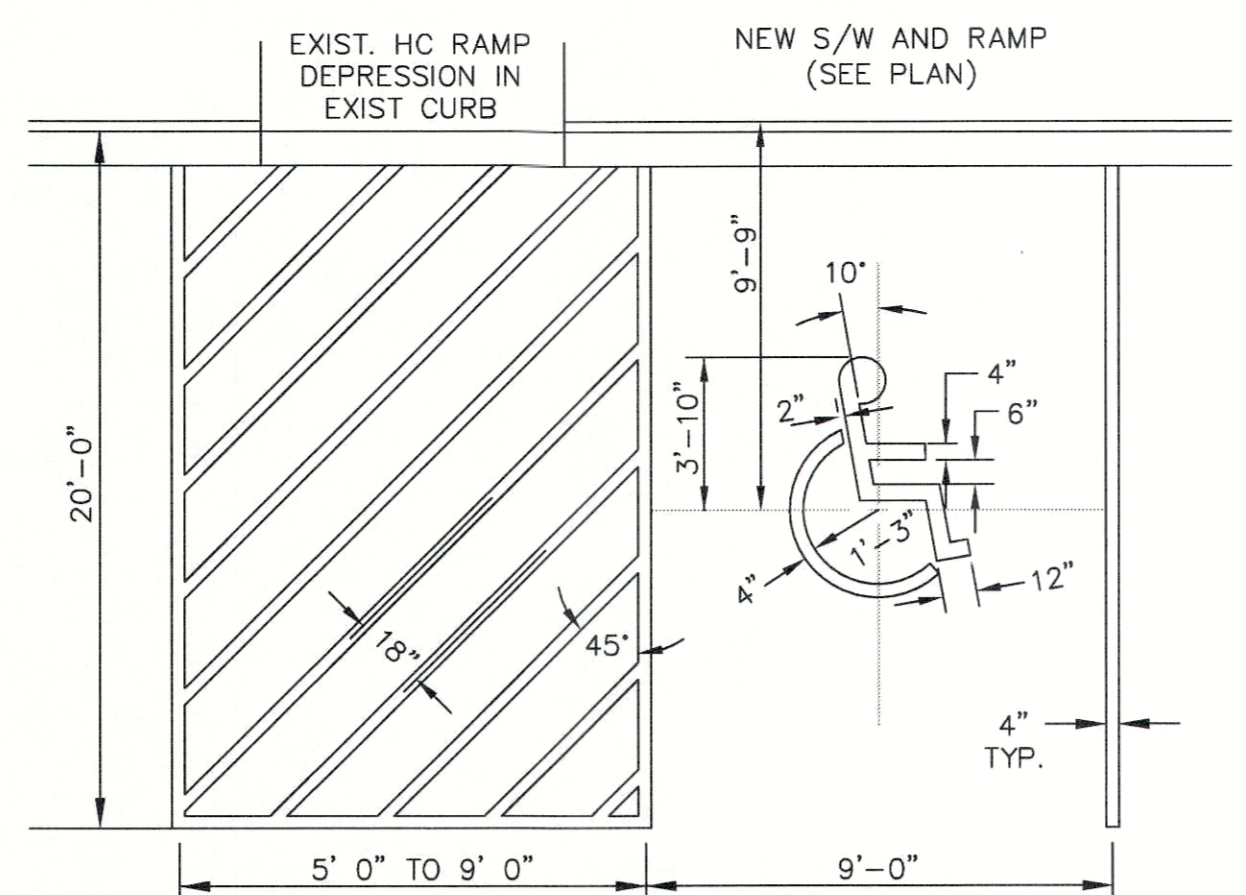
**BIBB COUNTY SCHOOL DISTRICT**  
484 Mulberry St., Macon, GA. 31201 (Ph. 478-765-8711)



**HANDICAP PARKING SIGNS**

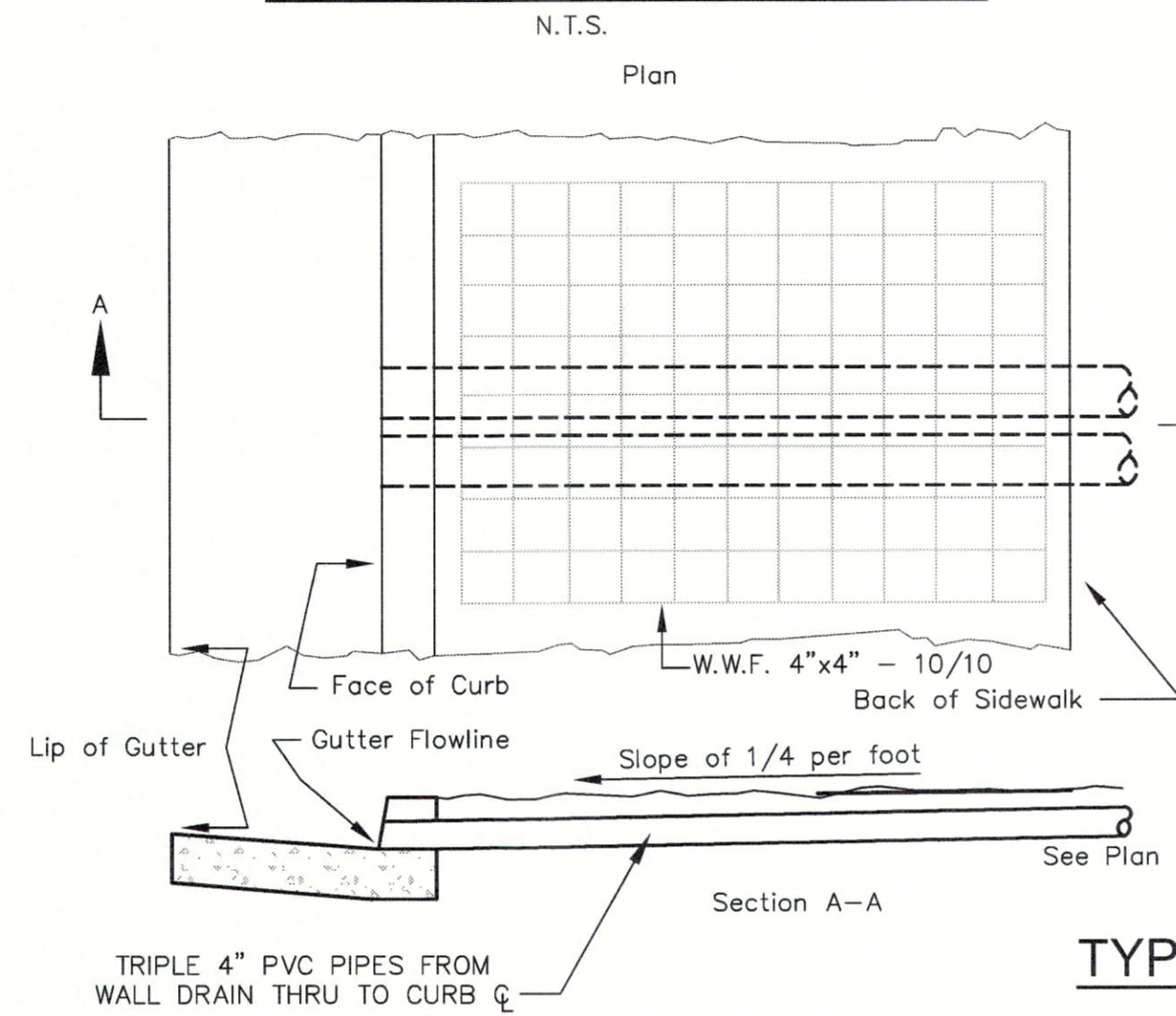


NOTE: MOUNT EACH SIGN W/2 5/16" GALV. STL. BOLTS TO 3-1/2" (4LB/FT) "U" CHANNEL SET 1'-6" MIN. BELOW FINISH GRADE AND ENCASED IN 6" CONC. FILLED HOLE. SIGN SHALL BE PLACED AS NOT TO BE OBTSCURED BY A VEHICLE PARKED IN THE SPACE.



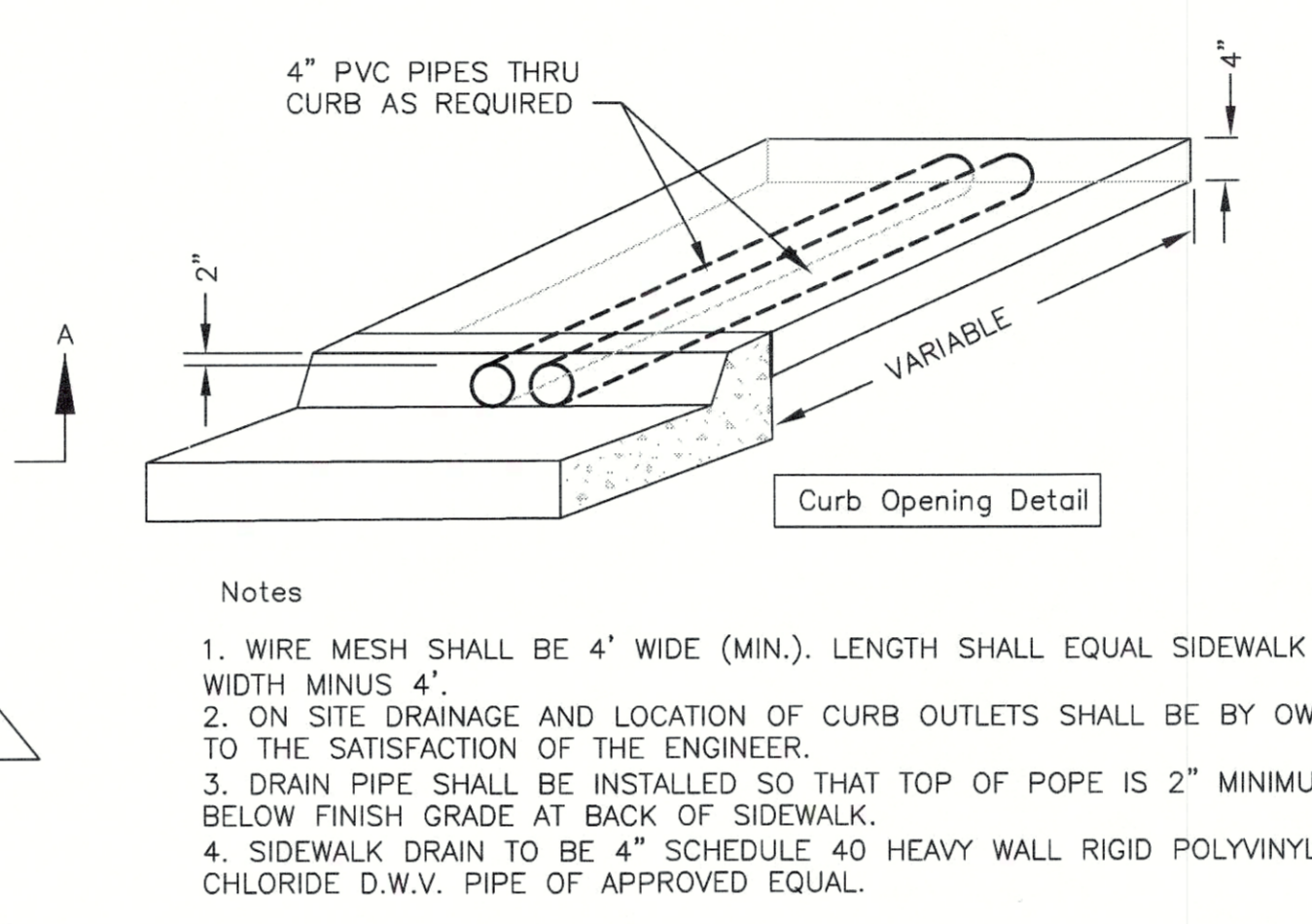
NOTES:  
1.) 4" WIDE PAVEMENT MARKINGS TYPICAL (WHITE ON ASPHALT, YELLOW ON CONCRETE, 2 COATS)  
2.) ALL PAINT SHALL CONFORM TO GDDOT STD. SPEC'S SECTION 652

**HANDICAP PARKING DETAIL**



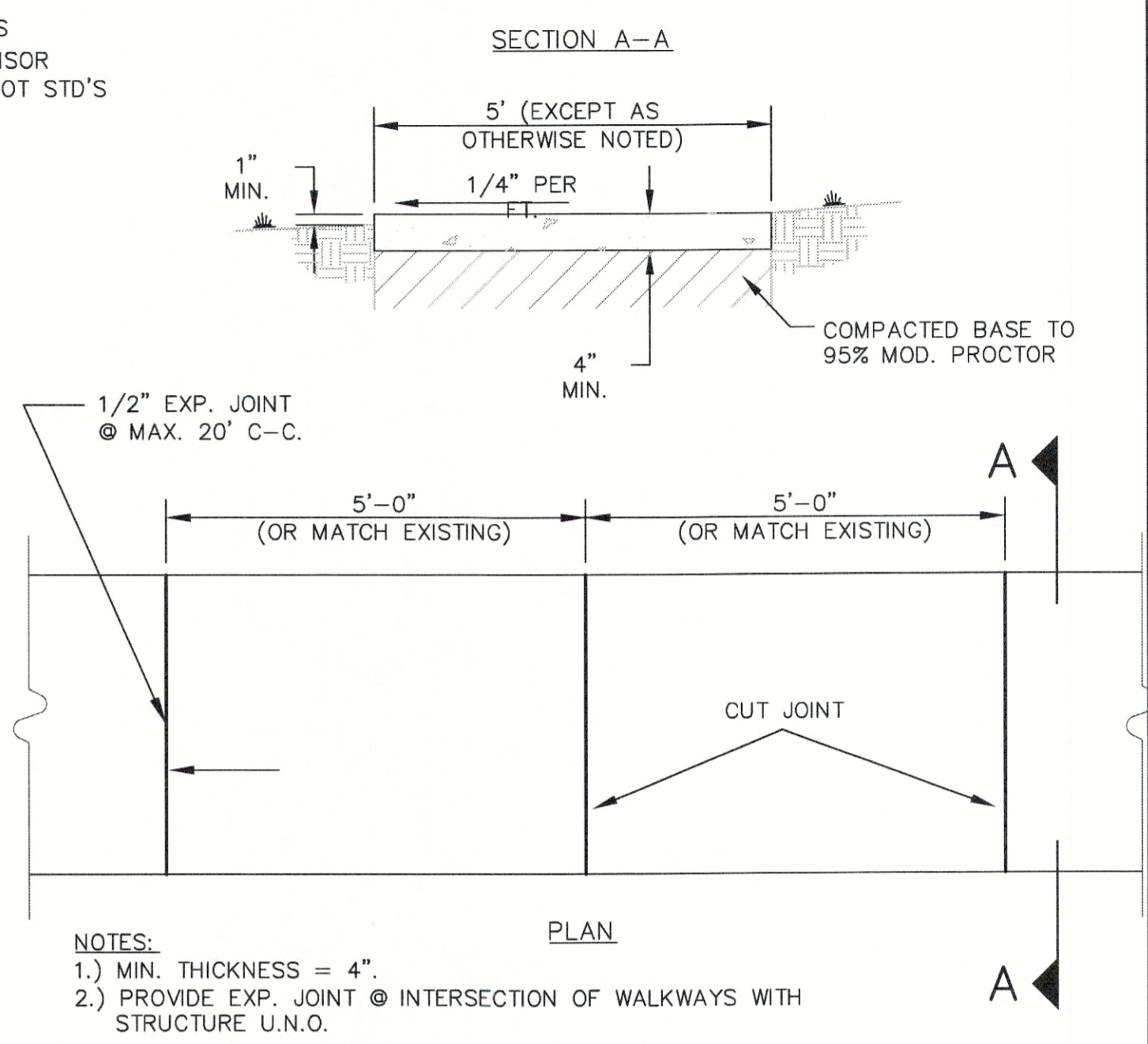
**TYP. CURB DRAIN DETAIL**

**NEW RAMP AND SIDEWALK DETAIL**  
(TO RUN PARALLEL WITH EXIST HANDICAP DEPRESSION)

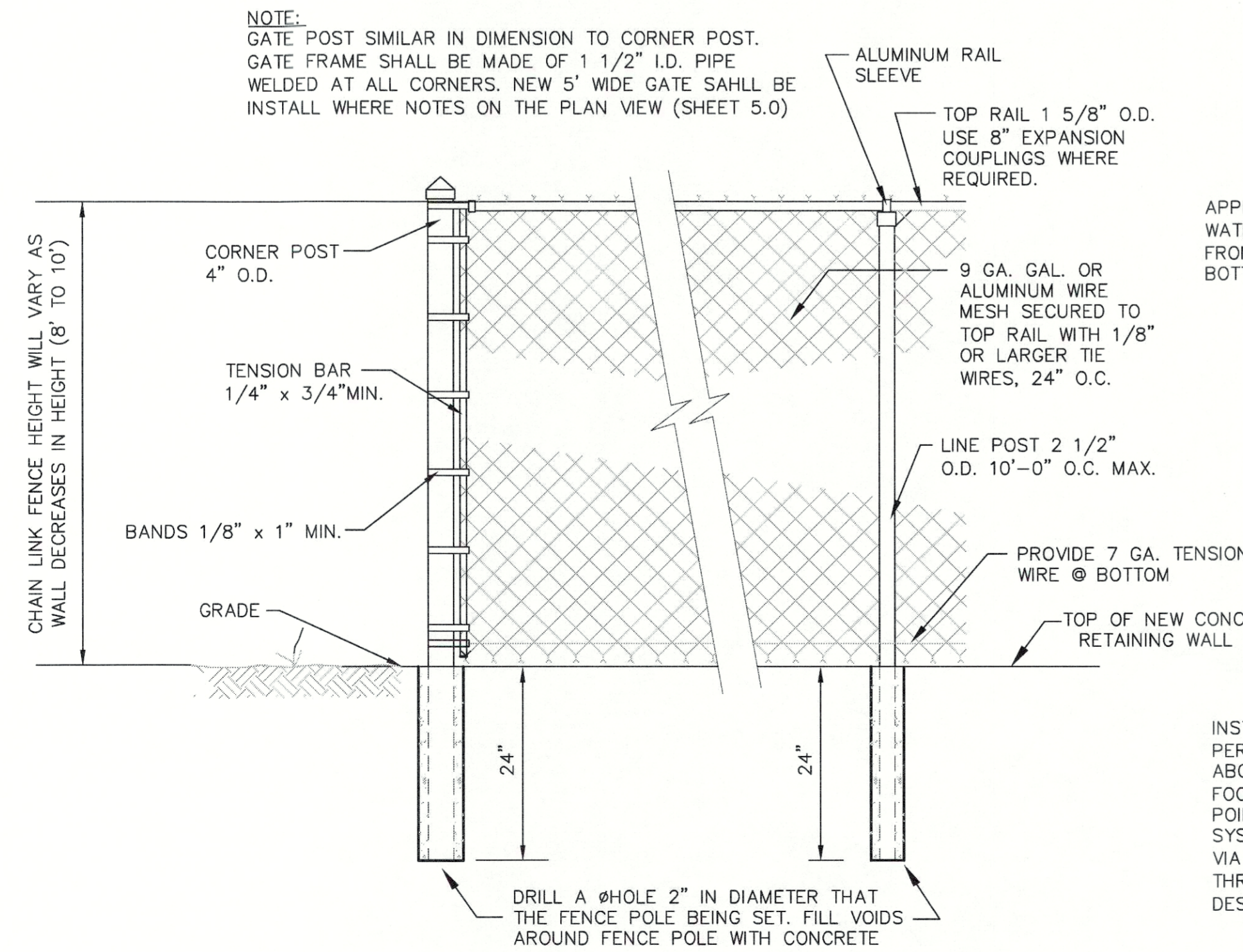


CAUTION! UNDERGROUND AND OVERHEAD UTILITIES PROTECTION CENTER, INC. CALL: 1-800-282-7411 THROUGHOUT GEORGIA (Outside Georgia Call Collect 770-325-5000)

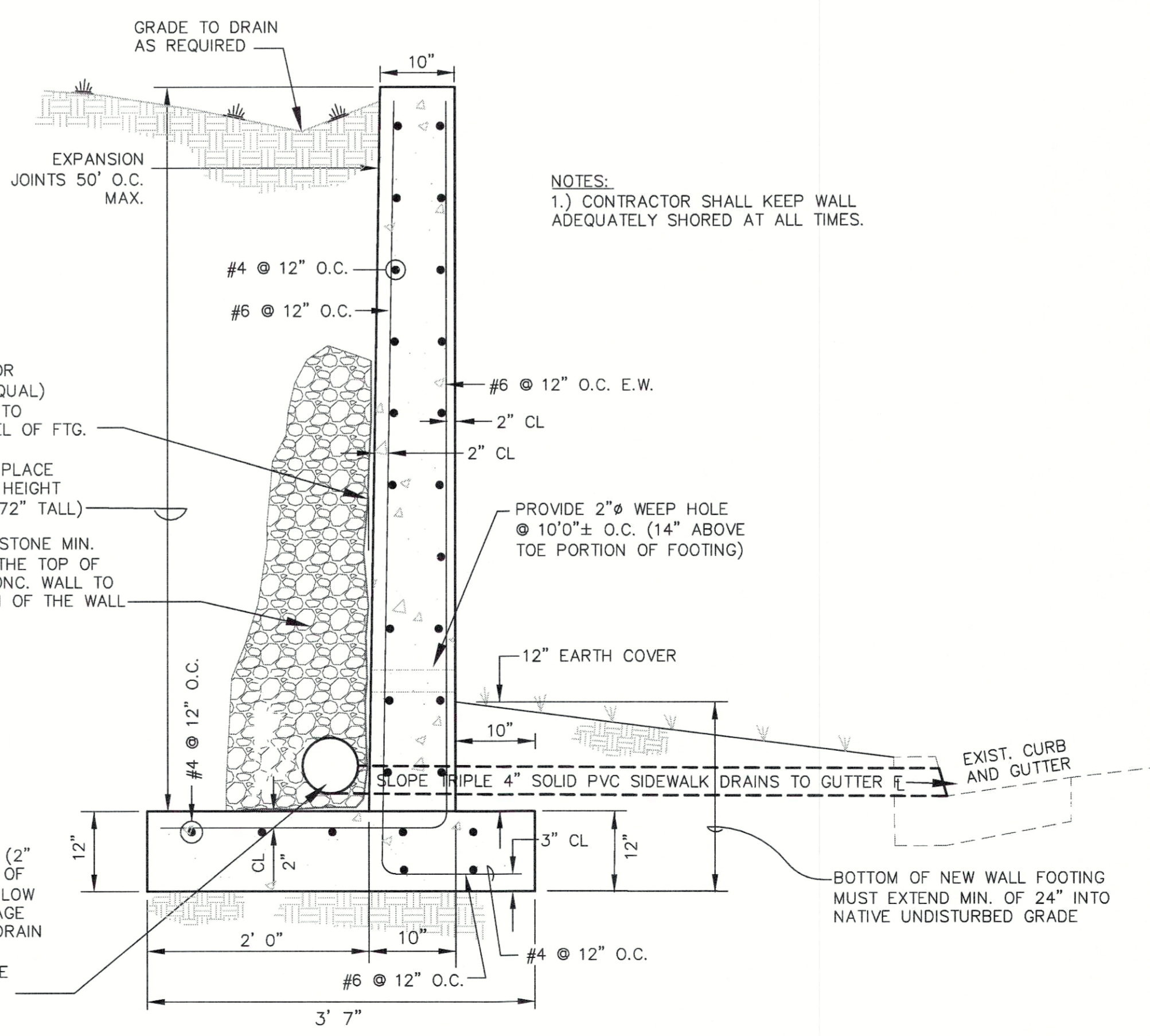
NOTICE: THESE CONSTRUCTION DOCUMENTS CONSIST OF MULTIPLE SHEETS AND IT SHALL BE THE RESPONSIBILITY OF THE CONTRACTOR TO HAVE A COMPLETE SET OF THE LATEST APPROVED CONSTRUCTION DOCUMENTS FROM THE BUILDING AND ENGINEERING DEPARTMENTS OF THE CITY OF MACON ON SITE AT ALL TIMES (LATEST APPROVED COPY).



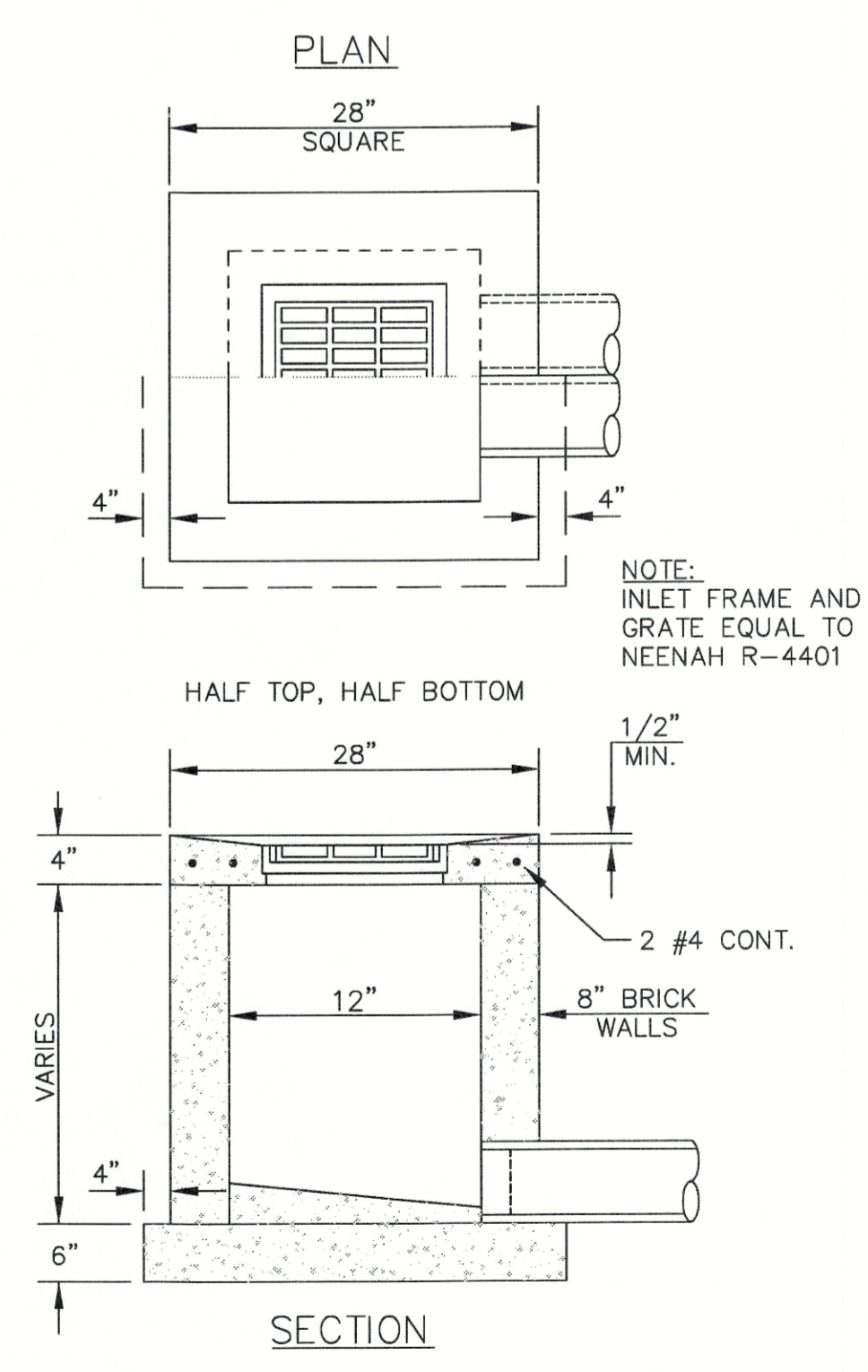
**TYPICAL CONCRETE SIDEWALK DETAIL**



**CHAIN LINK FENCE DETAIL**



**FREE STANDING RETAINING WALL**



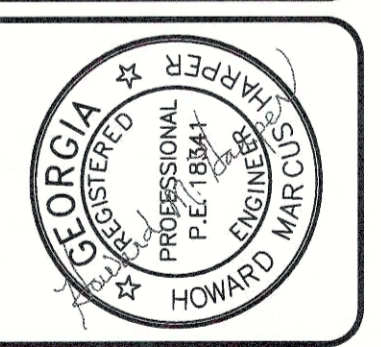
**YARD INLET DETAIL**

24 HOUR CONTACT: MR. JASON DANIEL PHONE: (478) 765-8505

ALEXANDER II MAGNET ACADEMY INTERIOR & EXTERIOR IMPROVEMENTS 1156 College St., Macon, GA. 31201

BIBB COUNTY SCHOOL DISTRICT 484 Mulberry St., Macon, GA. 31201 (Ph. 478-765-8711)

SACAL GLOBAL SOLUTIONS PLANNING, ENVIRONMENTAL, ENGINEERING, CONSTRUCTION FACILITY SUPPORT 2153 WINEVILLE AVE. (PO BOX 13885), MACON, GA. 31204 (478-745-9352)



Rev	Description	Date	Design	CHKD
0	INITIAL SUBMITTAL ISSUE	05.16.16	TRC	HWH
1	VARIOUS MISC. PLAN REVISIONS	05.23.16	TRC	HWH



**GENERAL NOTES:**

1. CAUTION, UNDERGROUND SERVICE ALERT! THE CONTRACTOR SHALL TELEPHONE TOLL FREE GEORGIA 811 A MINIMUM OF 48 HOURS PRIOR TO THE START OF ANY EXCAVATION AS SHOWN AND NOTED ON THE APPROVED PLANS.
2. ALL NECESSARY PERMITS TO PERFORM THE WORK AS SHOWN AND NOTED HEREON SHALL BE OBTAINED PRIOR TO THE START OF CONSTRUCTION FROM THE LOCAL ISSUING AUTHORITY, GA. STATE DOT AND/OR OTHER GOVERNMENTAL AGENCIES.
3. ALL CONSTRUCTION SHALL CONFORM TO ALL APPLICABLE RULES, REGULATIONS AND STANDARDS OF THE LOCAL ISSUING AUTHORITY, GEORGIA STATE DEPT. OF TRANSPORTATION (DOT) AND/OR OTHER GOVERNMENTAL AGENCIES.
4. UNDERGROUND UTILITY LINE LOCATIONS (IF ANY) ARE APPROXIMATE ONLY, AND IT SHALL BE THE RESPONSIBILITY OF THE CONTRACTOR TO DETERMINE THE EXACT LOCATION OF ANY SUCH UTILITIES. THE CONTRACTOR SHALL VERIFY LOCATIONS OF WATER, SANITARY SEWER AND POWER UTILITIES SHOWN ON PLANS ARE FOR THE CONTRACTOR'S CONVENIENCE ONLY. THE ENGINEER ASSUMES NO RESPONSIBILITY TO VERIFY ALL UTILITY LOCATIONS. CONTRACTOR IS SOLELY RESPONSIBLE FOR ALL DAMAGES TO EXISTING UTILITIES. THE CONTRACTOR SHALL NOTIFY THE ENGINEER IMMEDIATELY IF ANY EXISTING UTILITIES WILL EFFECT OR IMPEDE THE PROGRESSION OR COMPLETION OF THE DESIGN INTENT OF THESE CONSTRUCTION DOCUMENTS.
5. THE PROPERTY AS SHOWN HEREON IS NOT WITHIN A 100-YEAR FLOODPLAIN AREA.
6. THE CONTRACTOR SHALL COORDINATE RELOCATION OF ANY EXISTING UTILITIES WITH THE APPROPRIATE UTILITY ENTITY PRIOR TO THE START OF ANY CONSTRUCTION. THE COSTS FOR ANY AND ALL RELOCATION OF UTILITIES SHALL BE THE RESPONSIBILITY OF THE OWNER-DEVELOPER.

**MISCELLANEOUS MAPPING NOTES:**

1. UTILITIES SHOWN ARE LOCATIONS OF GROUND IDENTIFIABLE ITEMS. ADDITIONAL UTILITIES MAY EXIST ABOVE OR BELOW THE GROUND. THE ENGINEER ACCEPTS NO RESPONSIBILITY FOR THE COMPLETENESS OF THIS DATA.
2. THIS PROPERTY IS SUBJECT TO ALL RIGHT-OF-WAYS & EASEMENTS SHOWN OR NOT SHOWN, RECORDED OR NOT RECORDED.
3. THE CONTRACTOR SHALL REMOVE AND ABANDON EXISTING UTILITIES ONLY AFTER APPROVAL FROM ALL INTERESTED PARTIES. THESE FACILITIES MAY INCLUDE, BUT NOT BE LIMITED TO: EXISTING ON-SITE DRAINAGE PIPING, ON-SITE PRIVATE ELECTRICAL LINES AND APPURTENANCES, ABANDONED EROSION CONTROL DEVICES AND STRUCTURES. THE CONTRACTOR SHALL COORDINATE ANY AND ALL ABANDONMENT AND/OR RELOCATION WITH THE APPROPRIATE UTILITY COMPANIES OR ENTITY. ANY DISPOSAL OF SAID FACILITIES SHALL BE DONE IN ACCORDANCE WITH LOCAL UTILITY AND/OR GOVERNMENTAL REGULATIONS. RELOCATION AND/OR ABANDONMENT OF SAID FACILITIES AND/OR UTILITIES SHALL BE DONE AT THE EXPENSE OF THE OWNER/DEVELOPER. PERMITS (IF ANY) SHALL BE OBTAINED BY THE CONTRACTOR AND/OR OWNER/DEVELOPER.
4. IT SHALL BE THE RESPONSIBILITY OF THE CONTRACTOR TO INSURE THAT PRIOR TO ORDERING PROJECT MATERIALS, THAT THE MOST CURRENT SET OF CONSTRUCTION DOCUMENTS HAVE BEEN OBTAINED FROM THE PROJECT ENGINEER INCLUDING, BUT NOT LIMITED TO, THE PERMITTED SET(S) FROM ALL APPLICABLE AGENCIES AS APPROPRIATE. THE PROJECT ENGINEER SHALL ACCEPT NO RESPONSIBILITY FOR IMPROPER ORDERING OF MATERIALS.
5. ALL CONSTRUCTION MUST CONFORM TO THE APPLICABLE LOCAL ISSUING AUTHORITIES AND/OR GEORGIA DOT STANDARDS AND SPECIFICATIONS, WHETHER OR NOT REVIEW COMMENTS WERE MADE.
6. NOTIFY THE JURISDICTIONAL INSPECTOR 24 HOURS PRIOR TO CONSTRUCTION.
7. NO VEGETATIVE OR DEBRIS BURIAL PITS ARE ALLOWED ON THIS PROJECT SITE.
8. THE OWNER/DEVELOPER AND ENGINEER HAVE REVIEWED THE APPROPRIATE LOCAL, STATE, AND FEDERAL REGULATIONS REGARDING DEVELOPMENT ACTIVITIES ADJACENT TO FLOOD PLAINS AND WETLANDS AND HAVE DETERMINED THAT THIS DEVELOPMENT PLAN SATISFIES THE STANDARDS PRESENTED IN APPLICABLE REGULATIONS.
9. NEW WATER AND SANITARY SEWER SERVICES (IF APPLICABLE) WILL BE PROVIDED BY THE LOCAL ISSUING AUTHORITIES.
10. ALL VEHICULAR SIGNING AND STRIPING REQUIRED BY THE COUNTY TO BE PROVIDED BY THE DEVELOPER ACCORDING TO M.U.T.C.D. SPECIFICATIONS.
11. NOTICE: ALL CONSTRUCTION PROJECT SITES SHALL HAVE PERMITS POSTED ON SITE WITHIN AN APPROVED PERMIT BOX (SUCH AS THE PLASTIC BOXES FOR PERMITTED CONSTRUCTION PROJECTS). THE PERMIT BOXES MUST BE VISIBLE FROM THE ROAD THAT IMMEDIATELY ACCESSES THE PROPOSED CONSTRUCTION. THE INSPECTOR WILL NOT PERFORM ANY INSPECTION IF THE SITE DOES NOT HAVE THE PERMIT PROPERLY POSTED.

**CONSTRUCTION STANDARDS NOTE:**

NOTICE! ALL CONSTRUCTION, GRADING, INSTALLATION OF ALL NEW ON-SITE INFRASTRUCTURE AND MATERIALS FOR SAME, AND ANY OFF-SITE PUBLIC IMPROVEMENTS PROPOSED AS A PART OF THIS DEVELOPMENT SHALL BE INSTALLED IN ACCORDANCE WITH ALL RULES, REGULATIONS, STANDARDS AND SPECIFICATIONS OF THE LOCAL ISSUING AUTHORITY AND GEORGIA DOT (IF APPLICABLE), INCLUDING THE LATEST REVISED EDITION OF LOCAL ISSUING AUTHORITY STD DETAILS. IT SHALL BE THE SOLE RESPONSIBILITY OF THE CONTRACTOR TO HAVE A COPY OF THE LATEST REVISED EDITION OF SAID STANDARD DETAILS.

NOTICE: THESE CONSTRUCTION DOCUMENTS CONSIST OF MULTIPLE SHEETS AND IT SHALL BE THE RESPONSIBILITY OF THE CONTRACTOR TO HAVE A COMPLETE SET OF THE LATEST APPROVED CONSTRUCTION DOCUMENTS FROM THE BUILDING AND ENGINEERING DEPARTMENTS OF THE CITY OF MACON ON SITE AT ALL TIMES (LATEST APPROVED COPY).



**CAUTION! UNDERGROUND AND OVERHEAD UTILITIES PROTECTION CENTER, INC.**  
 Call Before You Dig! Underground Service Alert!  
 UTILITIES PROTECTION CENTER, INC.  
 CALL: 1-800-282-7411 THROUGHOUT GEORGIA  
 (Outside Georgia Call Collect 770-325-5000)



**NOTE:**

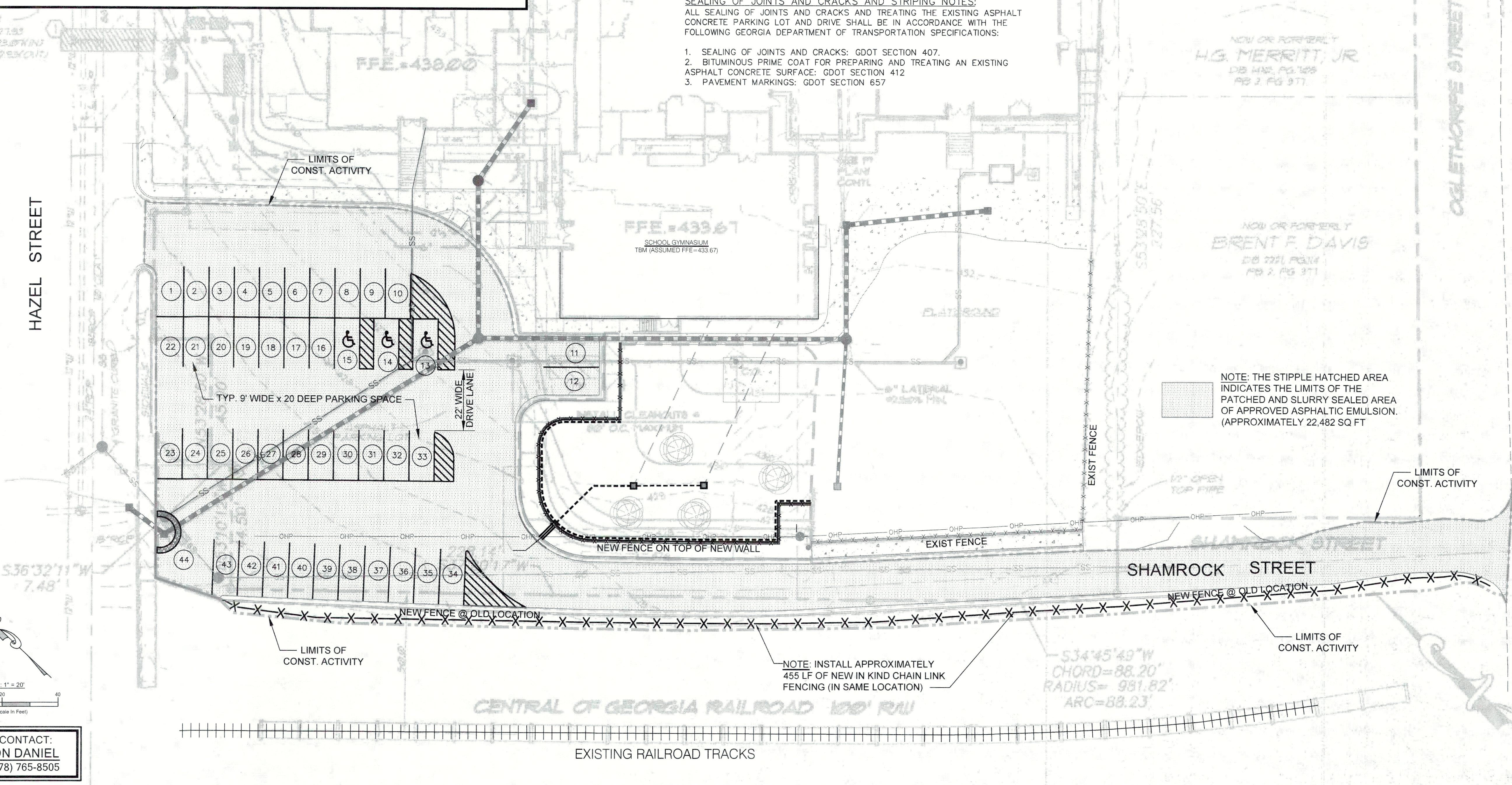
1. THE EXISTING PLAYGROUND IS BEING EXPANDED TO APPROXIMATELY TWICE THE EXISTING AREA.
2. ELEVATION OF THE TOP AND BOTTOM OF EXIST. WALL SHALL BE DETERMINED.
3. ANY DRAINAGE INLETS, DOWNSPOUTS, DISCHARGE POINTS AND EXISTING PIPES WITHIN THE LIMITS OF SURVEY SHALL HAVE TOPS AND INVERTS VERIFIED.
4. THE EXISTING CONCRETE WALKWAYS AND CONCRETE SLAB SHALL BE PROTECTED FROM DAMAGE. THE EXISTING BLACK IRON FENCE SHALL BE REMOVED AND SALVAGED TO A LOCATION AS DIRECTED BY THE SCHOOL PRINCIPAL.
5. THE EXISTING ASPHALT PARKING LOT AND DRIVEWAY IS SLATED TO HAVE THE EXISTING SMALL STRESS FRACTURES SEALED AND THAT SAME AREA WILL BE SLURRY SEALED (ASPHALTIC EMULSION) AND THEN RE-STRIPED (WITH NEW SIGNAGE AS REQUIRED). THIS WORK SHALL BE DONE UNDER THESE PLANS.
6. THE EXISTING OLD BROKEN DOWN CHAIN LINK FENCE SOUTHERLY OF THE PLAYGROUND AREA AND IMMEDIATELY ADJACENT TO THE EXISTING RAIL ROAD SHALL BE REMOVED AND A NEW FENCE SHALL BE INSTALLED IN KIND AND IN THE SAME LOCATION (FROM APPROXIMATELY HAZEL STREET TO OGLETHORPE STREET).
7. THE BASE TOPOGRAPHIC MAP INDICATING THE EXISTING CONDITIONS (I.E. EXISTING CURB AND GUTTER, EXISTING CONTOURS, BUILDINGS, UTILITIES, ETC) WAS PREPARED BY CARTER AND SLOOPE, CIVIL ENGINEERS AND LAND SURVEYORS FOR BRITAIN, THOMPSON, BRAY AND YOUNG, DATED JULY, 2002.

**SEALING OF JOINTS AND CRACKS AND STRIPING NOTES:**

ALL SEALING OF JOINTS AND CRACKS AND TREATING THE EXISTING ASPHALT CONCRETE PARKING LOT AND DRIVE SHALL BE IN ACCORDANCE WITH THE FOLLOWING GEORGIA DEPARTMENT OF TRANSPORTATION SPECIFICATIONS:

1. SEALING OF JOINTS AND CRACKS: GDOT SECTION 407.
2. BITUMINOUS PRIME COAT FOR PREPARING AND TREATING AN EXISTING ASPHALT CONCRETE SURFACE: GDOT SECTION 412
3. PAVEMENT MARKINGS: GDOT SECTION 657

HAZEL STREET



NOTE: THE STIPPLE HATCHED AREA INDICATES THE LIMITS OF THE PATCHED AND SLURRY SEALED AREA OF APPROVED ASPHALTIC EMULSION. (APPROXIMATELY 22,482 SQ FT)

NOTE: INSTALL APPROXIMATELY 455 LF OF NEW IN KIND CHAIN LINK FENCING (IN SAME LOCATION)

534'45"49"W  
 CHORD=88.20'  
 RADIUS= 981.82'  
 ARC=88.23'

24 HOUR CONTACT:  
**MR. JASON DANIEL**  
 PHONE: (478) 765-8505

**ALEXANDER II MAGNET ACADEMY**  
 INTERIOR & EXTERIOR IMPROVEMENTS  
 1156 College St., Macon, GA. 31201  
 XXXX Millbra District, County, State  
**BIBB COUNTY SCHOOL DISTRICT**  
 484 Mulberry St., Macon, GA. 31201 (Ph: 478-765-8711)

**PATCHING AND SLURRY SEAL**  
**COAT LIMITS, FENCE**  
**REPLACEMENT, SIGNAGE**  
**AND STRIPING PLAN**

**SACAL**  
 SACAL GLOBAL SOLUTIONS  
 PLANNING, ENVIRONMENTAL, ENGINEERING, CONSTRUCTION, FACILITY SUPPORT  
 2153 WINEVILLE AVE. (PO BOX 1988), MACON, GA. 31204 (478-745-9352)



Rev	Description	Date	Design	CHK'd
0	INITIAL SUBMITTAL	05/16/16	TRC	HWH
1	VARIOUS MISC. PLAN REVISIONS	05/23/16	TRC	HWH

SHEET **5.2** OF **14**

PEF 006632 (Drawing Scale: As Noted)