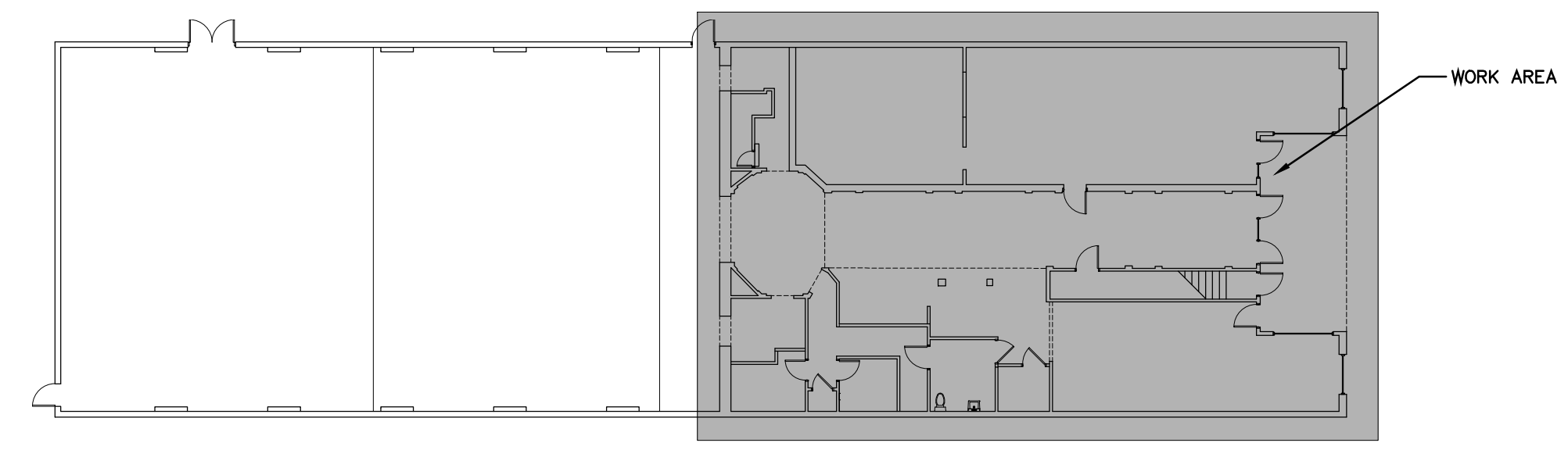


THIS DRAWING AS PREPARED BY CERTIFIED ARCHITECTS SHALL BE USED FOR THE SPECIFIC IDENTIFIED PROJECT ONLY AND SHALL BE RETURNED FOR THEIR REQUEST

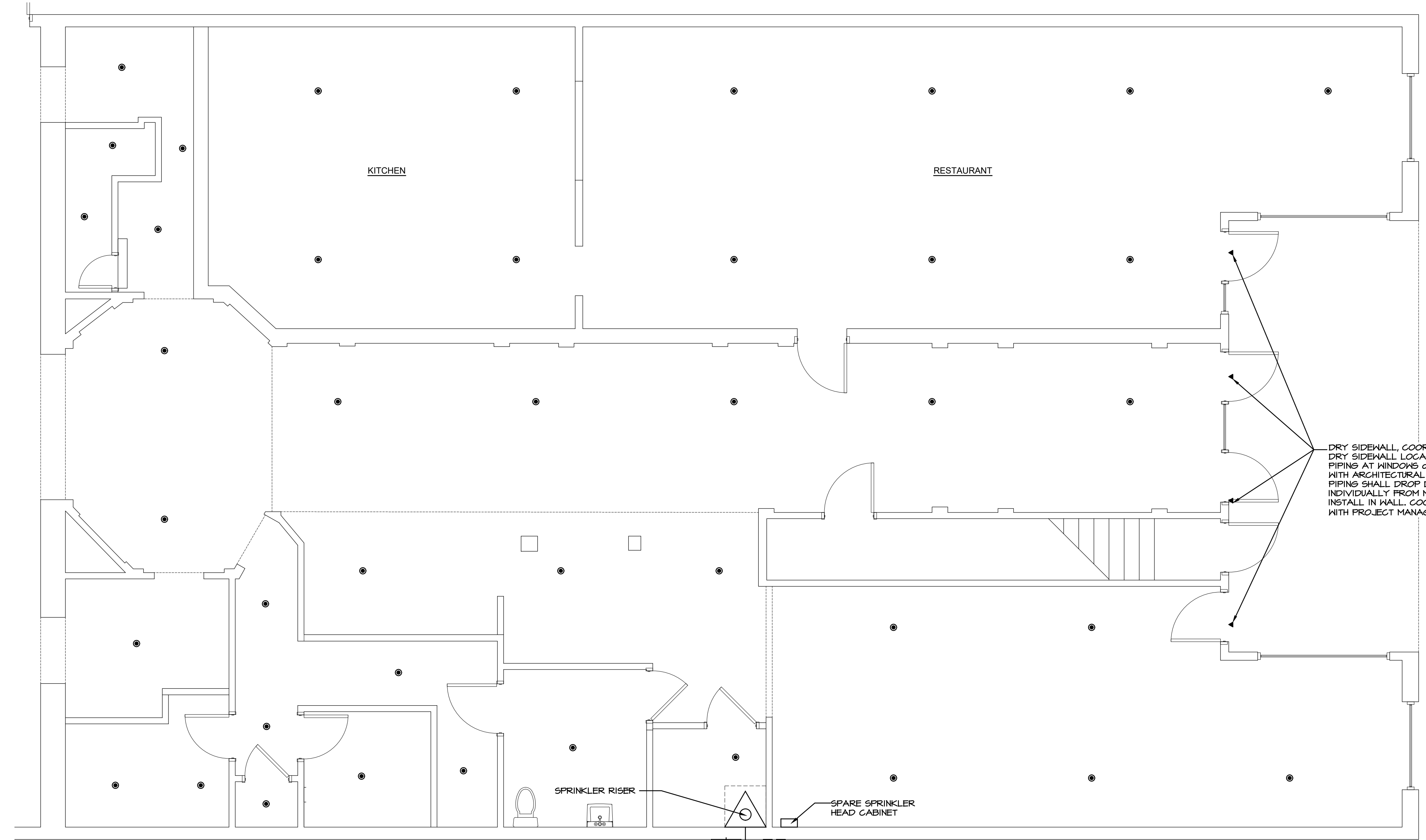
LEGEND

EXISTING CONSTRUCTION TO REMAIN



KEY PLAN

NTS



DRY SIDEHALL, COORDINATE DRY SIDEHALL LOCATIONS & PIPING AT WINDOWS AND DOORS WITH ARCHITECTURAL PLANS. PIPING SHALL DROP DOWN INDIVIDUALLY FROM MAIN. INSTALL IN WALL, COORDINATE WITH PROJECT MANAGER (TYP.).

SEE SHEET FP-10 FOR FIRE VAULT WITH BACKFLOW PREVENTER AND FDC DETECTOR CHECK.

SPRINKLER RISER
SPARE SPRINKLER HEAD CABINET

FDC

ALARM BELL

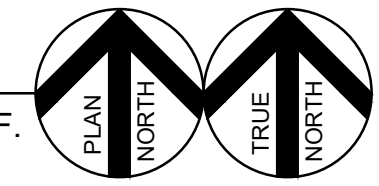
6" FIREWATER LINE, 3'-0" MINIMUM BELOW GRADE. EXTEND TO 5'-0" FROM BUILDING.

ALL PIPING FROM THE "POINT OF SERVICE" INCLUDING UNDERGROUND USED FOR SPRINKLER SYSTEM MUST BE INSTALLED BY A LICENSED SPRINKLER CONTRACTOR. SEE SITE PLAN, SHEET FP-10 FOR CONTINUATION.

PARTIAL FIRST FLOOR SPRINKLER PLAN

SCALE: 1/4" = 1'-0"

3,843 S.F.



SPRINKLER LEGEND

| SYM | DESCRIPTION | SPRINT | TYPE | TEMP. | ORIFICE | TYCO MODEL # | FINISH |
|-----|--------------|-----------|----------------|-------|---------|--------------|---------------------|
| ⊙ | PENDENT | 15' X 15' | QUICK RESPONSE | 165° | 1/2" | TY325L | SEMI-RECESSED WHITE |
| ▶ | DRY SIDEHALL | 15' | STANDARD | 165° | 1/2" | TY3895-DS1 | BRASS |

NOT FOR CONSTRUCTION INFORMATION ONLY

THE DESIGN PROFESSIONAL WANTS ANY AND ALL RESPONSIBILITY AND LIABILITY FOR PROBLEMS WHICH MAY BE CAUSED BY THESE PLANS, SPECIFICATIONS AND THE DESIGN INTENT THEY CONVEY, OR PROBLEMS WHICH MAY BE CAUSED BY OTHERS' FAILURE TO OBTAIN AND/OR FOLLOW THE DESIGN PROFESSIONAL'S GUIDANCE, BEING GENERAL CONTRACTOR, SUBCONTRACTOR, ARCHITECTS OR CONSULTANTS WHICH ARE ALIGNED, THE DRAWINGS ARE HEREBY SUBMITTED IN NATURE. THIS DRAWING AND ITS CONTENTS AND DESIGN ARE THE PROPERTY OF KELSO-REGEN ASSOC. INC. CONSULTING ENGINEERS, KNOXVILLE, TN. NOTICE IS HEREBY GIVEN THAT THESE ARE ORIGINAL STATE SEAL AND ORIGINAL SIGNATURE AND DATE ARE AFFIXED TO THIS DRAWING. THIS DRAWING SHALL BE DEEMED NOT FOR CONSTRUCTION INFORMATION ONLY, ONLY WHEN AN ORIGINAL STATE SEAL AND ORIGINAL SIGNATURE AND DATE ARE AFFIXED WILL THIS DRAWING BE FOR CONSTRUCTION.

KRA NO: 19002
CDA No. 100484440
DRAWN BY: DG
APPROVED BY: JGC

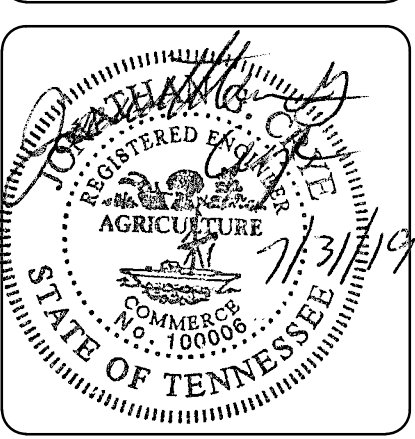
KELSO-REGEN ASSOCIATES, INC.
Consulting Engineers
Engineering Analysis
Energy Management
201 SheriLake Lane, Suite 101
Knoxville, TN, 37922
www.kelso-regen.com
P:865-598-5348 F:865-247-0293

| no. | date | revision | by |
|-----|------|----------|----|
| | | | |
| | | | |
| | | | |
| | | | |

Building Renovations for:
Bonnie Kate Theatre
Elizabethton, Tennessee

Architectural Services
Cain Rash West Architects

130 Regional Park Dr.
Kingsport, TN 37660
Phn (423) 349-7760
Fax (423) 349-7413
www.grcinc.com



| | |
|--------------|------------------------------------|
| issued | 00-00-00 |
| checked | JGC |
| approved | JGC |
| drawn | DG |
| project no. | 00-00 |
| drawing name | PARTIAL FIRST FLOOR SPRINKLER PLAN |

FP-11

printed: 7/31/2019 7:50:31 AM file: 19052_SPRINKLER.DWG