



# **BERKELEY CITY COLLEGE CAMPUS EXPANSION**

**TOWN HALL**  
May 8, 2019

**NOLL  
& TAM**  
ARCHITECTS

IMAGE SOURCE: BCC

# Where we left off...

**REHABILITATION PROGRAM APPROVED BY DSA**

**2 ½ renovated floors**

**Added area: 25,000 GSF**

**No renovation at 2050 Center Street**



#### LEGEND

- CLASSROOM
- HEALTH CENTER
- BOOKSTORE
- MEETING / STUDY
- LOUNGE / STUDY
- SECURITY
- UTILITY

## GROUND FLOOR

SEPTEMBER 6, 2017





# SECOND FLOOR

SEPTEMBER 6, 2017



#### LEGEND

- MEETING/STUDY
- OFFICE
- PROGRAM SPACE

## THIRD FLOOR

SEPTEMBER 6, 2017

# Where we are now...

**NEW BUILDING: 6 floors**

**Added area: 60,000 GSF**

**Renovation at 2050 Center Street**

# PROGRAM GOALS

- TWO BUILDINGS TO CREATE A SINGLE CAMPUS
- INCREASE GENERAL CLASSROOM SPACE (QUANTITY AND SIZE)
- INCREASE LIBRARY & LEARNING RESOURCE CENTER SPACES

# PROGRAM GOALS

- INCREASE LAB SPACE IN 2050 CENTER
- INCREASE OFFICE SPACE FOR FULL- AND PART-TIME FACULTY
- SUPPORT STUDENT SUCCESS
  - Health Center
  - Multi-Center/Learning Communities
  - Student Study Space



## 2016/2017 – MILVIA RENOVATION PROJECT

**2000 Center** – to be relinquished

### **2118 Milvia**

Complete Building – not an outpost

Expand Classrooms (replace 2000 Center + 4)

Faculty

Administrative Offices (Dean)

Student Activities and Services

- Health center
- Veterans
- Learning Communities
- Bookstore
- Student Lounge

**Renovation Footprint (2 ½ Floors) – 25,000 OGSF**

### **2050 Center**

Minor Reassignment

- Repurpose space vacated by functions moving to Milvia

**Renovation Footprint - NOT INCLUDED in Project**

## 2019 – BCC CAMPUS EXPANSION PROJECT

**2000 Center** – to be relinquished

### **2118 Milvia**

Complete Building – not an outpost

Expand Classrooms (replace 2000 Center + 10)

Faculty (full and part time)

Administrative Offices (Dean + College Administration)

Art Studios

Outdoor Roof Space

Student Activities and Services

- Health center
- Veterans
- Multi-Cultural Center
- Bookstore
- Student Lounge
- Learning Resource Center

**New Building Footprint (6 Floors) – 60,000 OGSF**

### **2050 Center**

Targeted Remodel

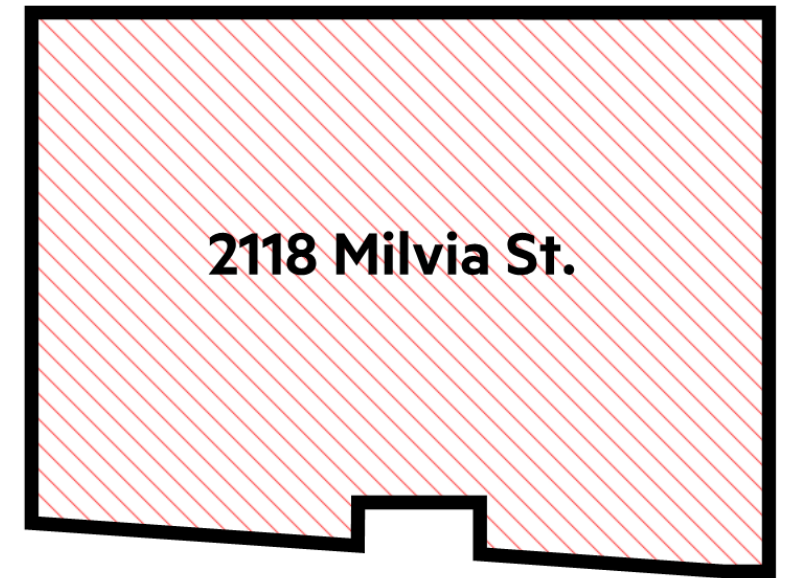
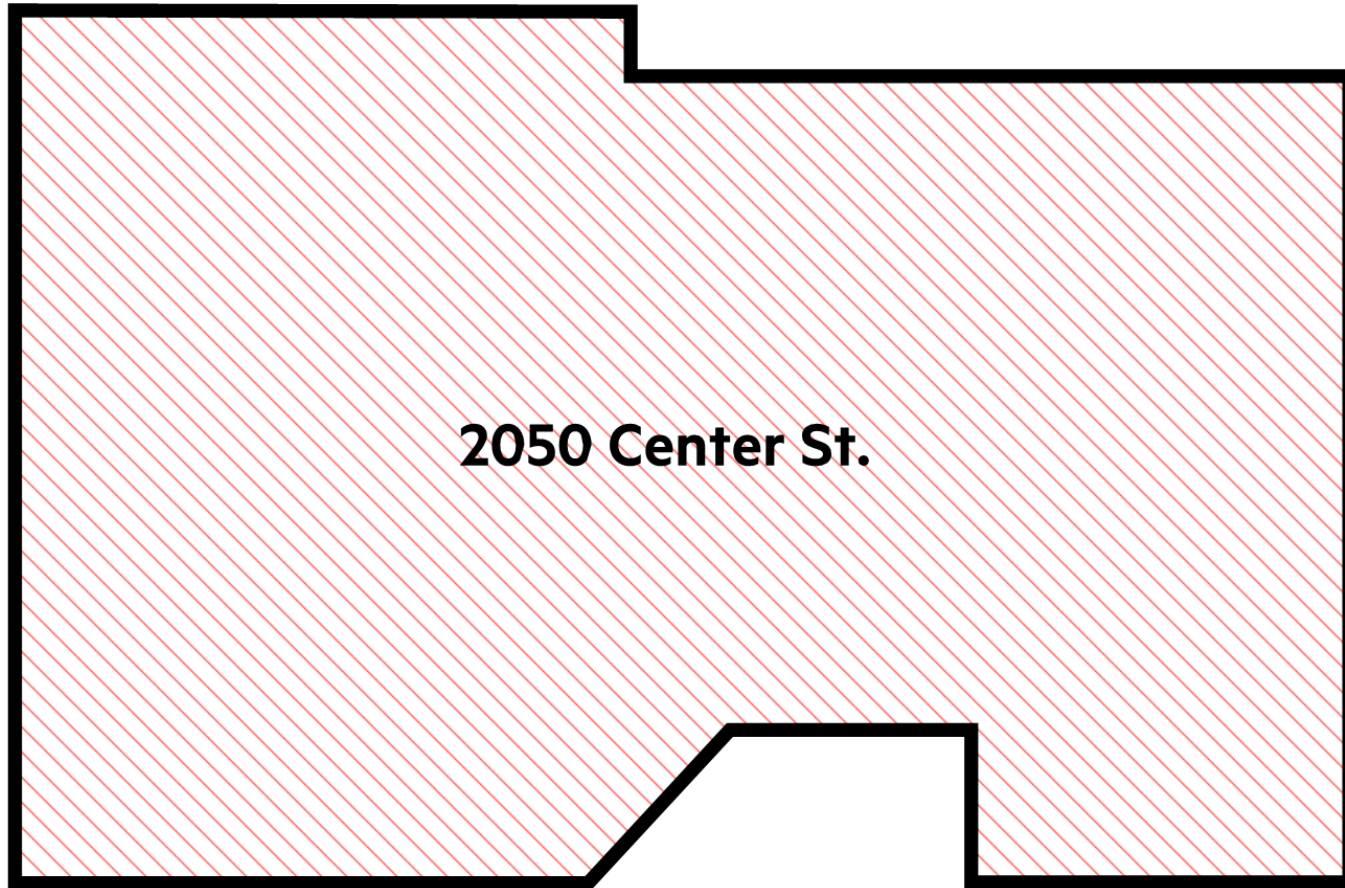
- Expand STEM Labs
- Classrooms
- Expand Library
- Improve faculty offices

**Renovation Footprint – APPROXIMATELY 27,700 GSF**

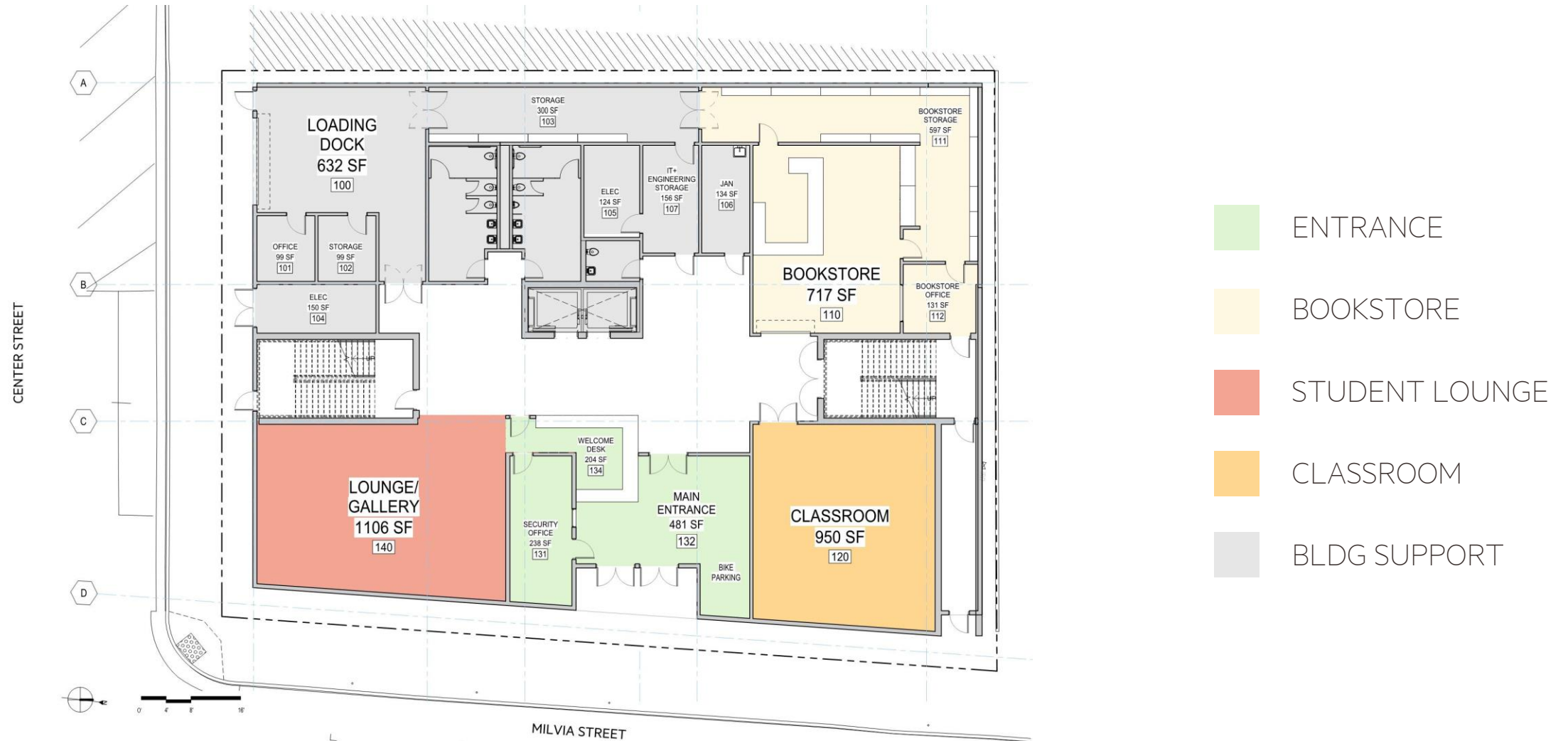
# INSTRUCTIONAL SPACE SUMMARY

SPACE TYPE	BEFORE PROJECT	AFTER PROJECT		
	Total	Total	Milvia	Center
Classrooms	28*	34	13	21
Large Lecture	2	2	0	2
Computer Classrooms	10	11	1	10
Science Labs	5	9	0	10
Art Studios	2	2	2	0
	*Includes Annex			

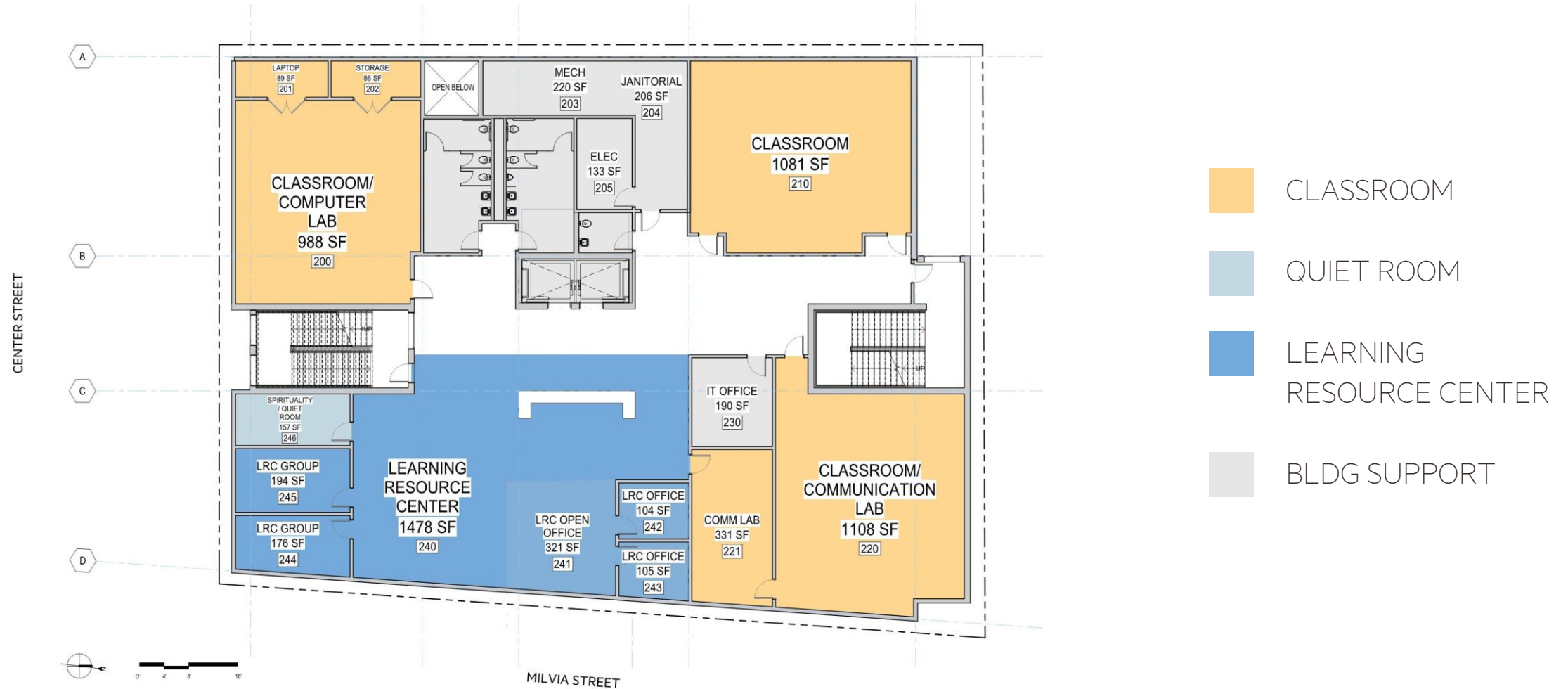
# SIZE COMPARISON



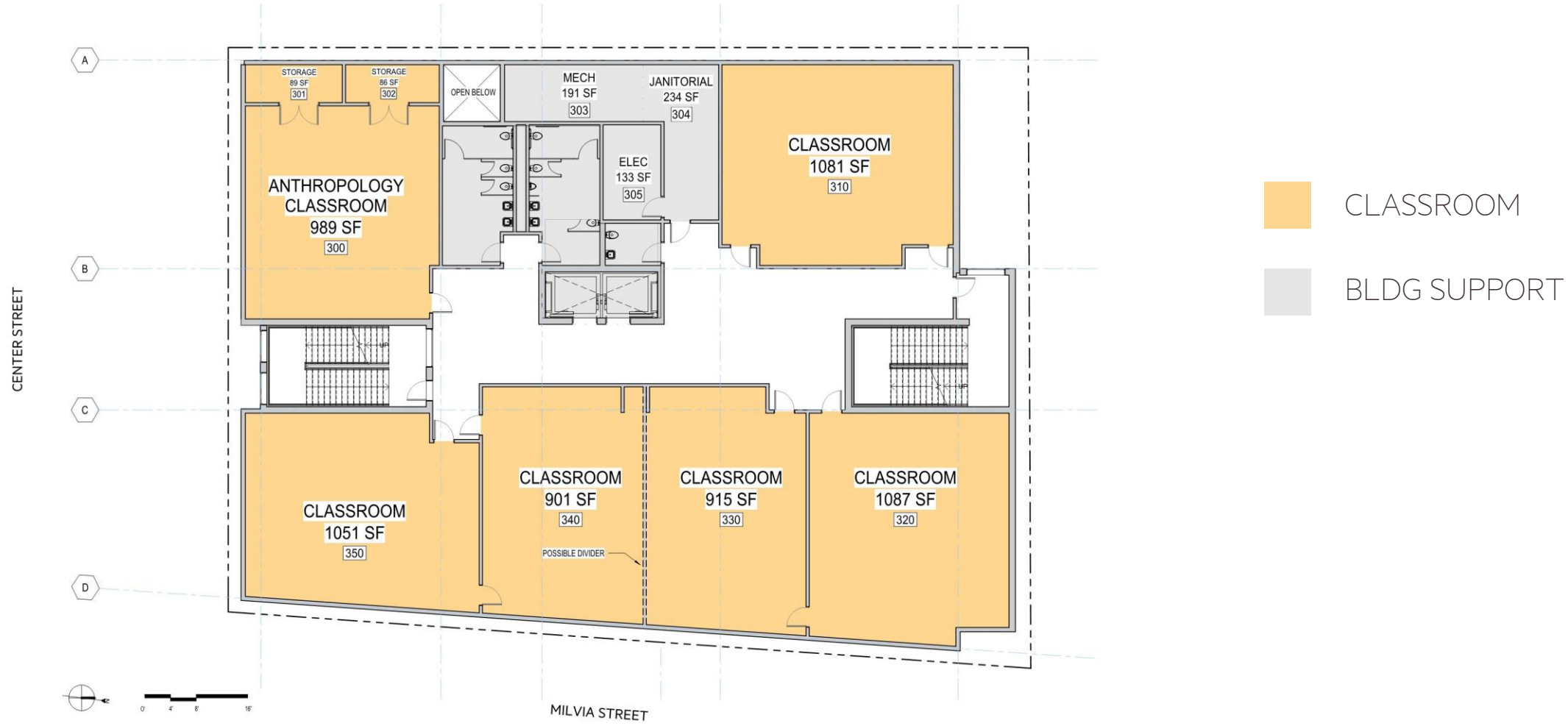
# FLOOR 1 – 2118 MILVIA ST.



# FLOOR 2 – 2118 MILVIA ST.

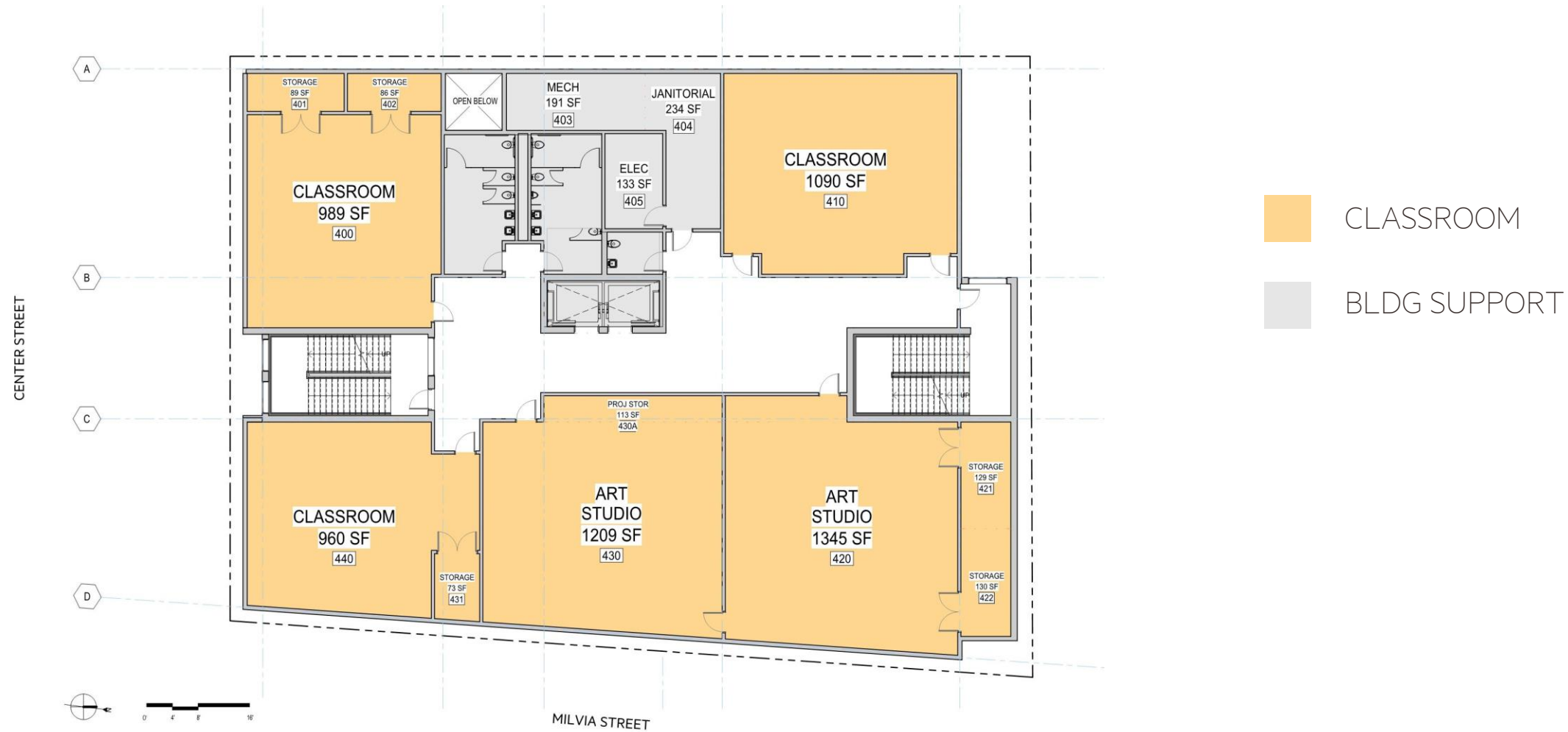


# FLOOR 3 – 2118 MILVIA ST.





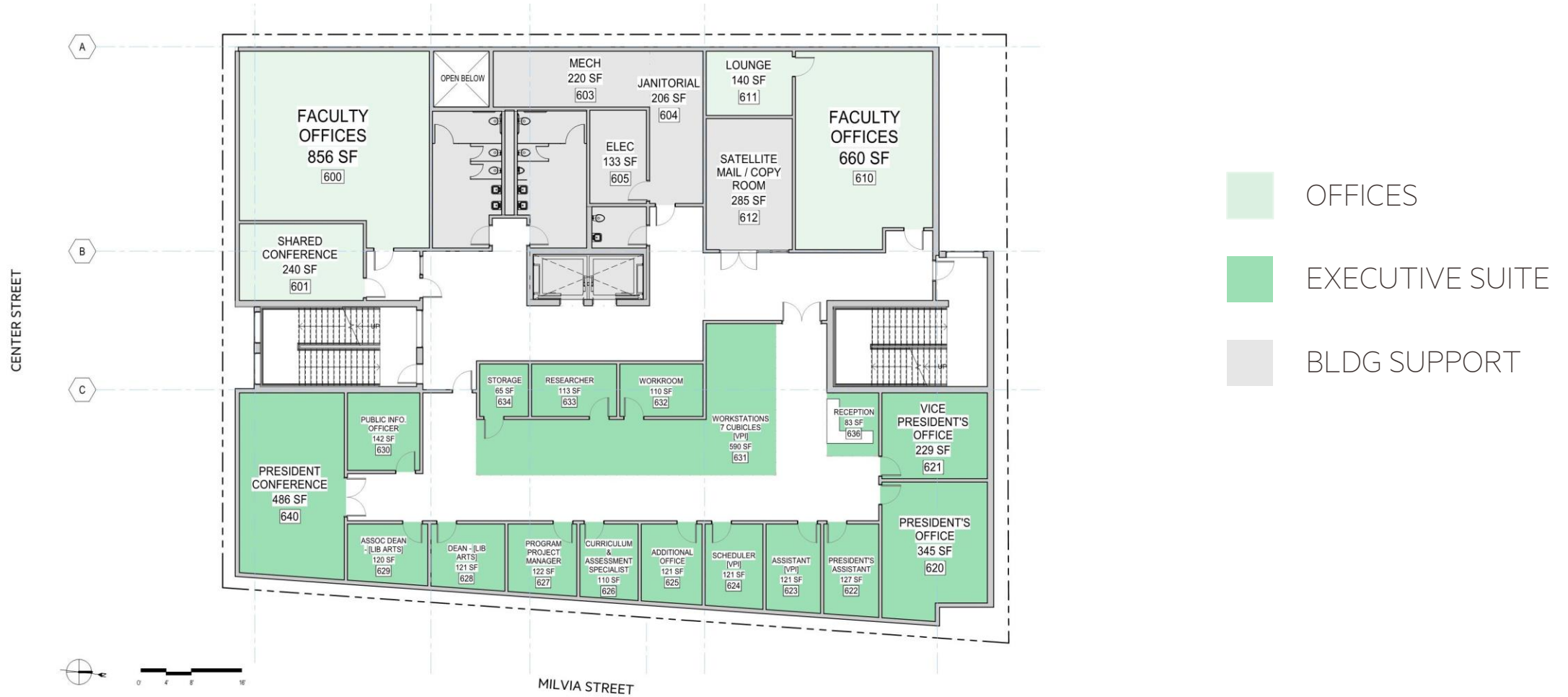
# FLOOR 4 – 2118 MILVIA ST.



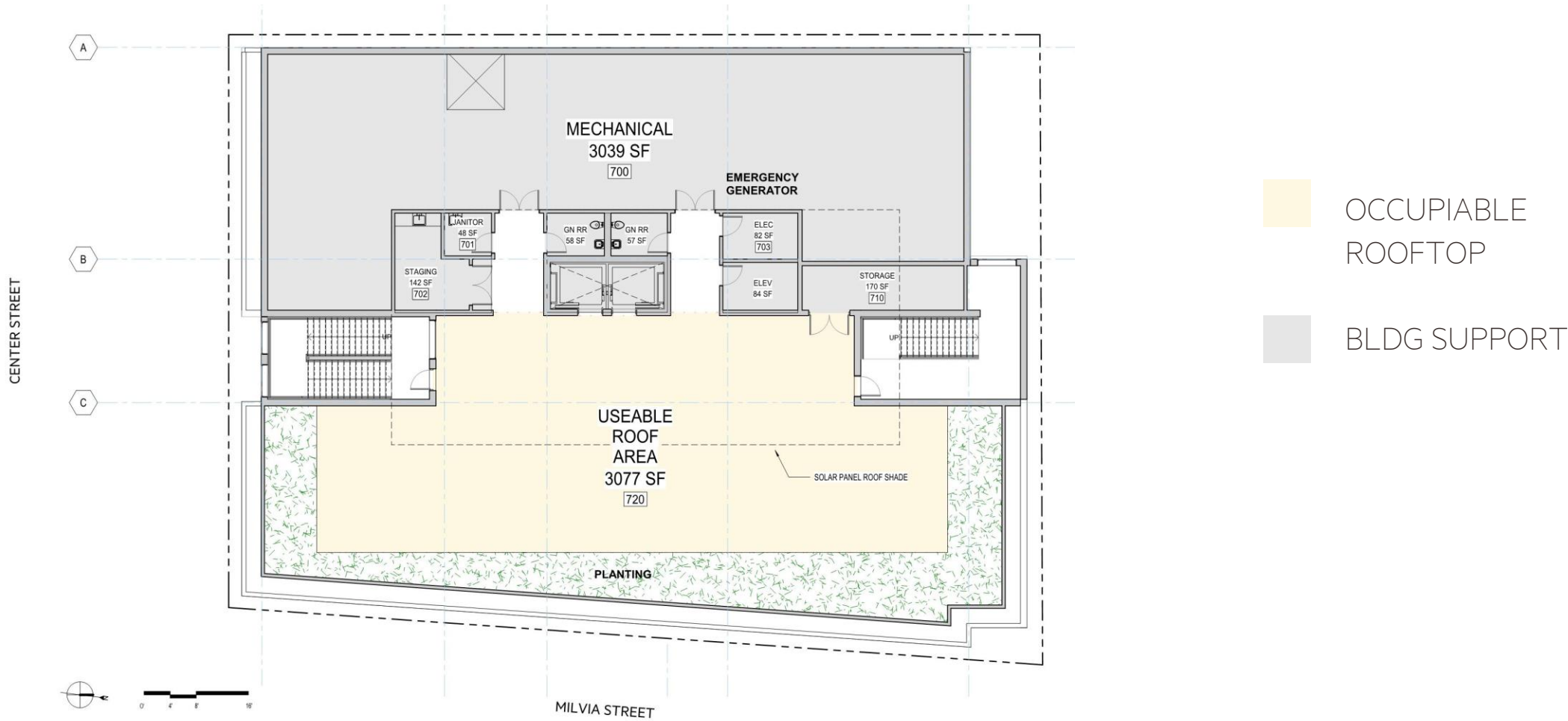
# FLOOR 5 – 2118 MILVIA ST.



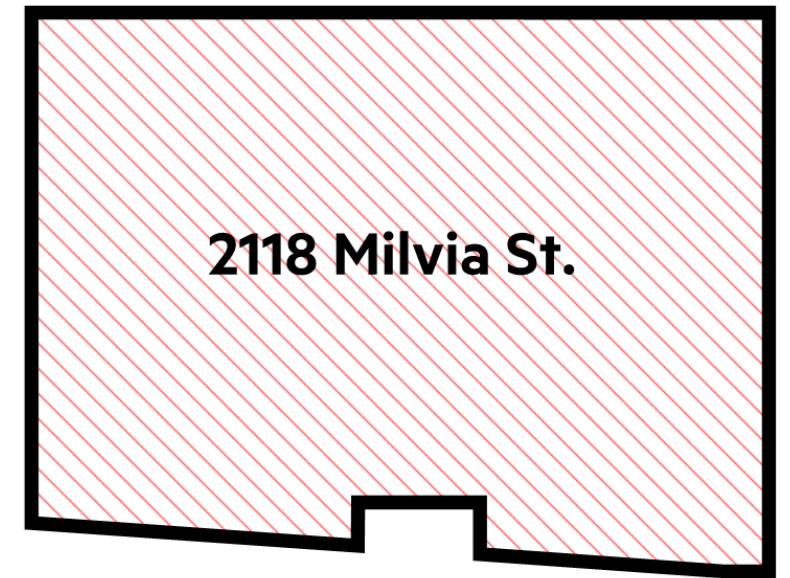
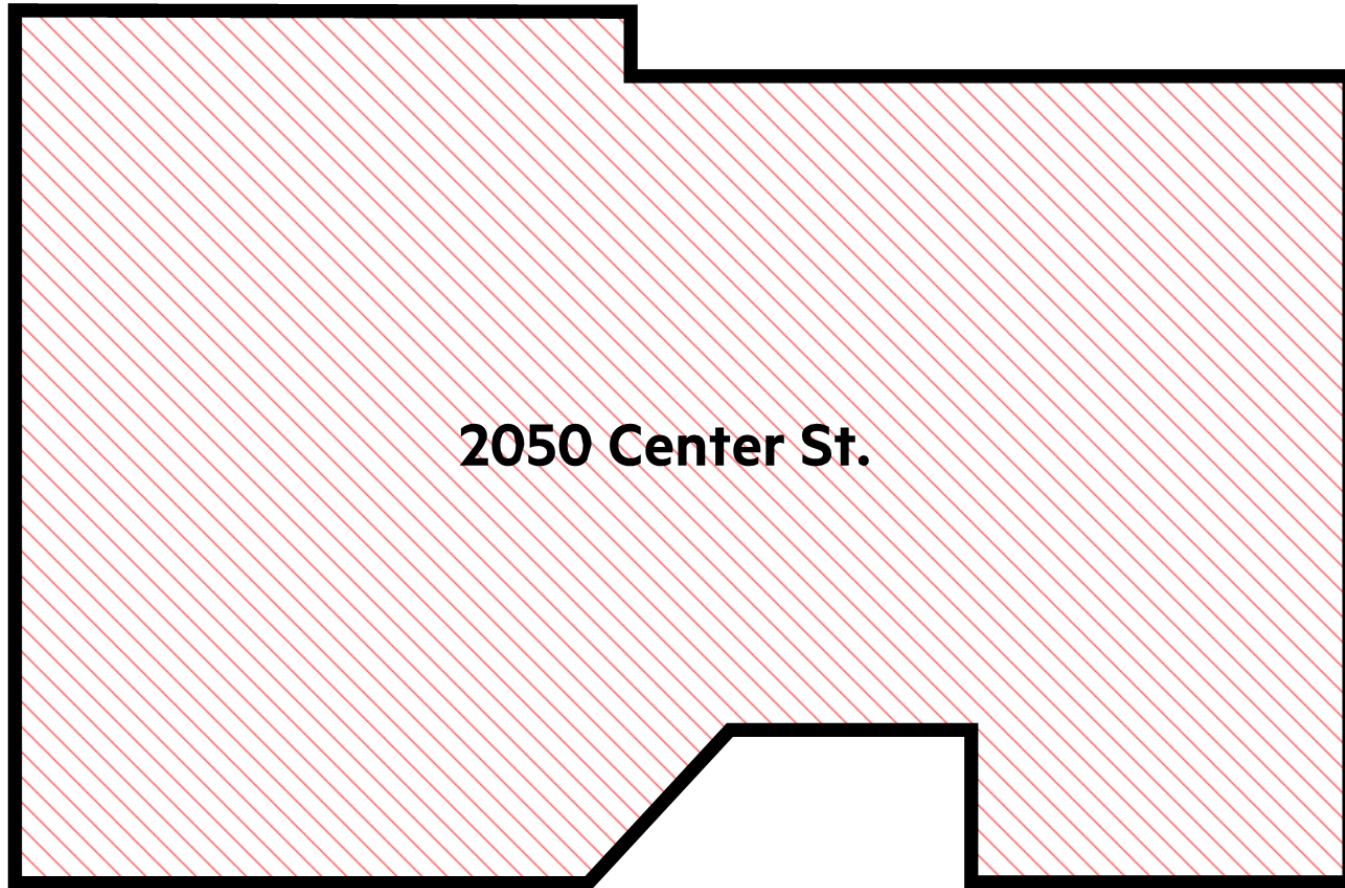
# FLOOR 6 – 2118 MILVIA ST.



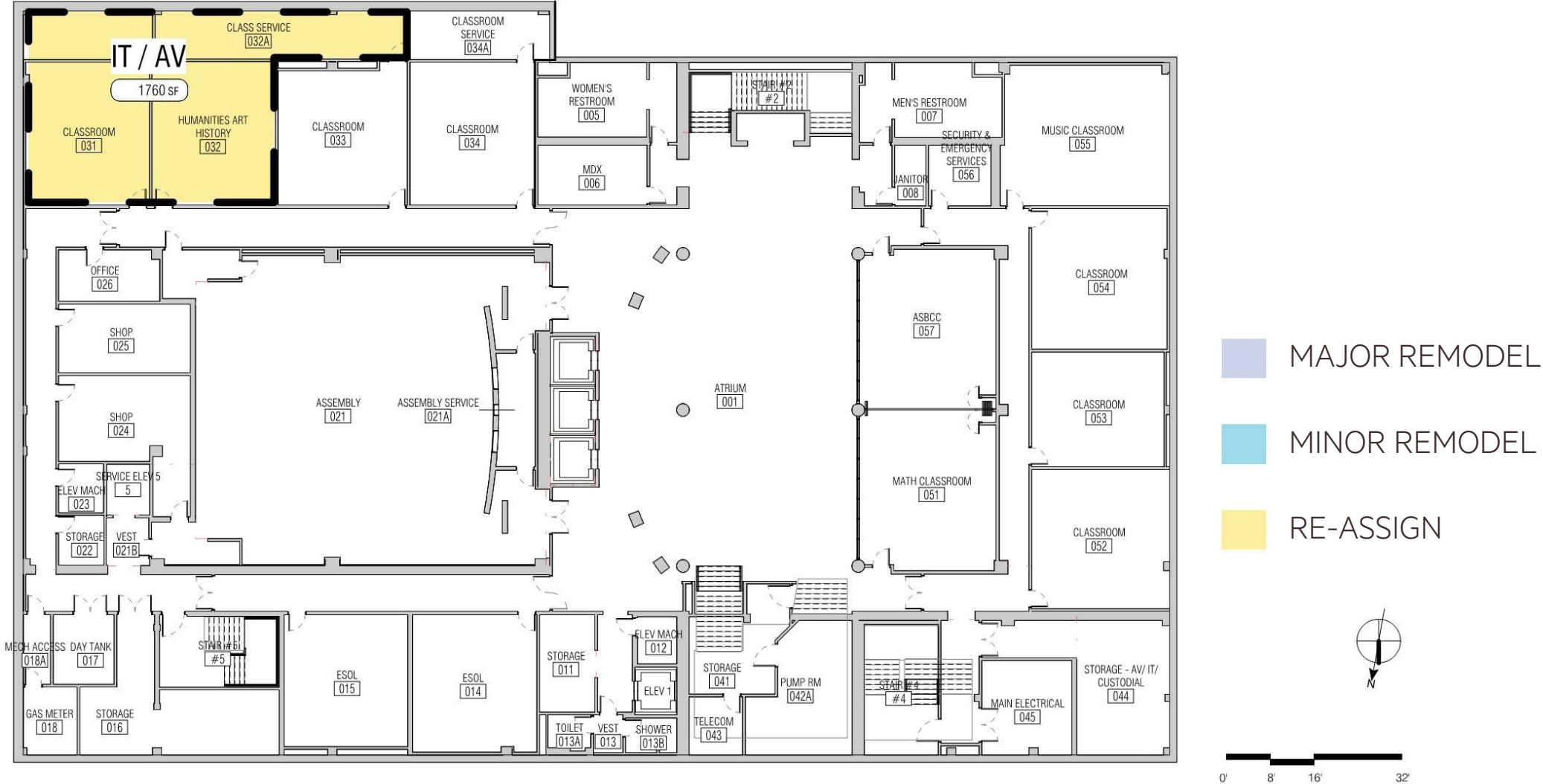
# ROOF – 2118 MILVIA ST.



# SIZE COMPARISON

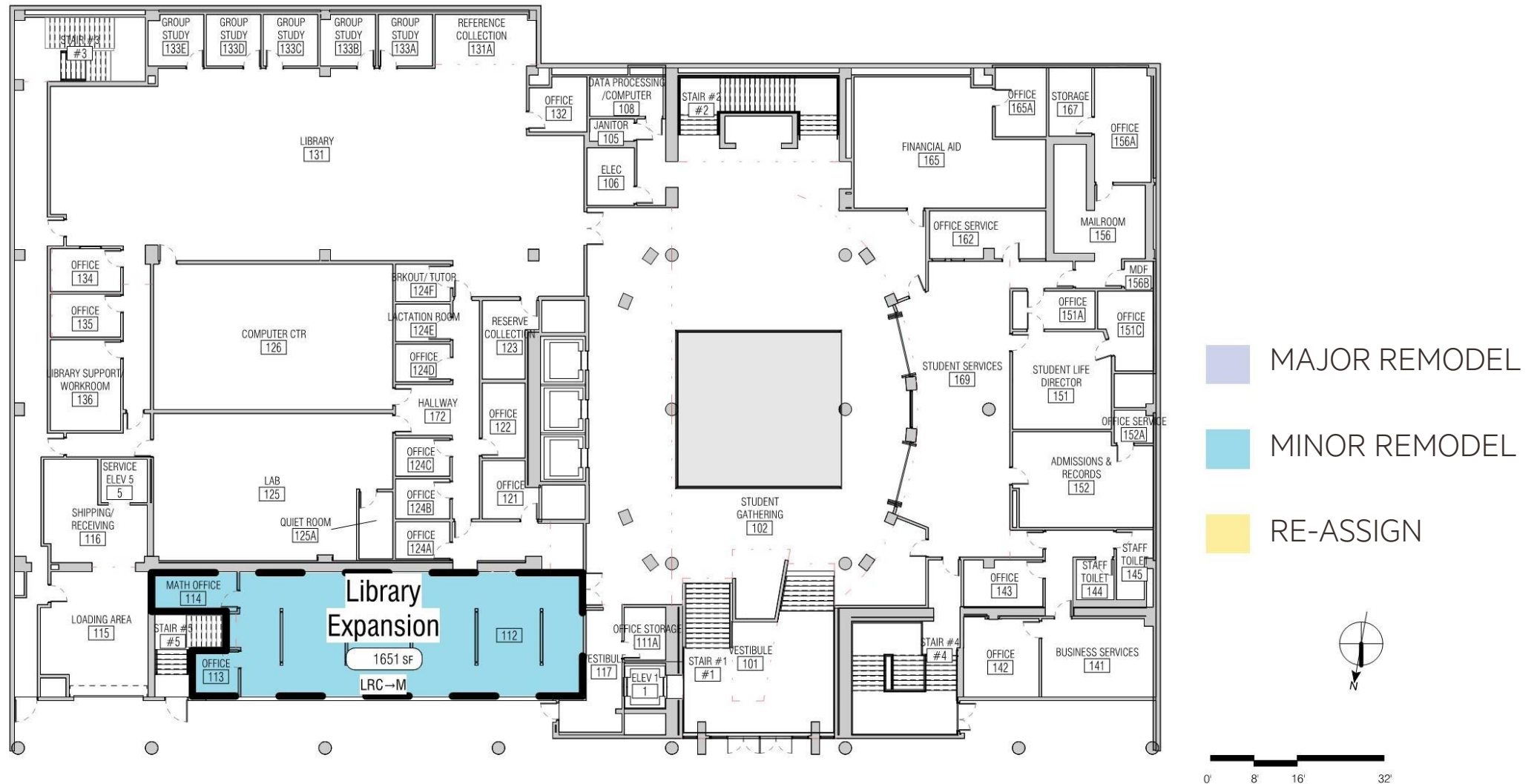


# FLOOR BASEMENT - 2050 CENTER ST.

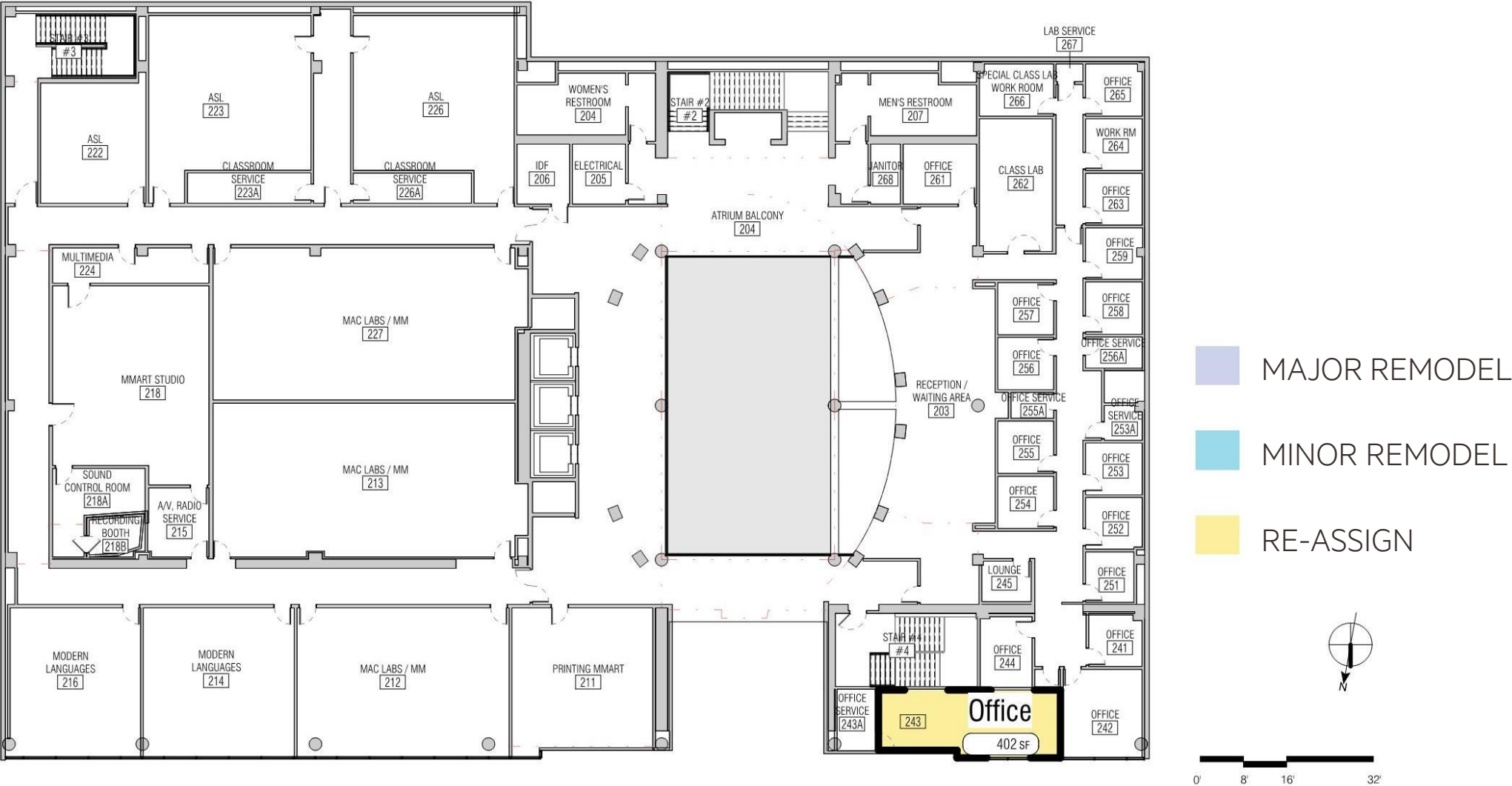




# FLOOR 1 - 2050 CENTER ST.



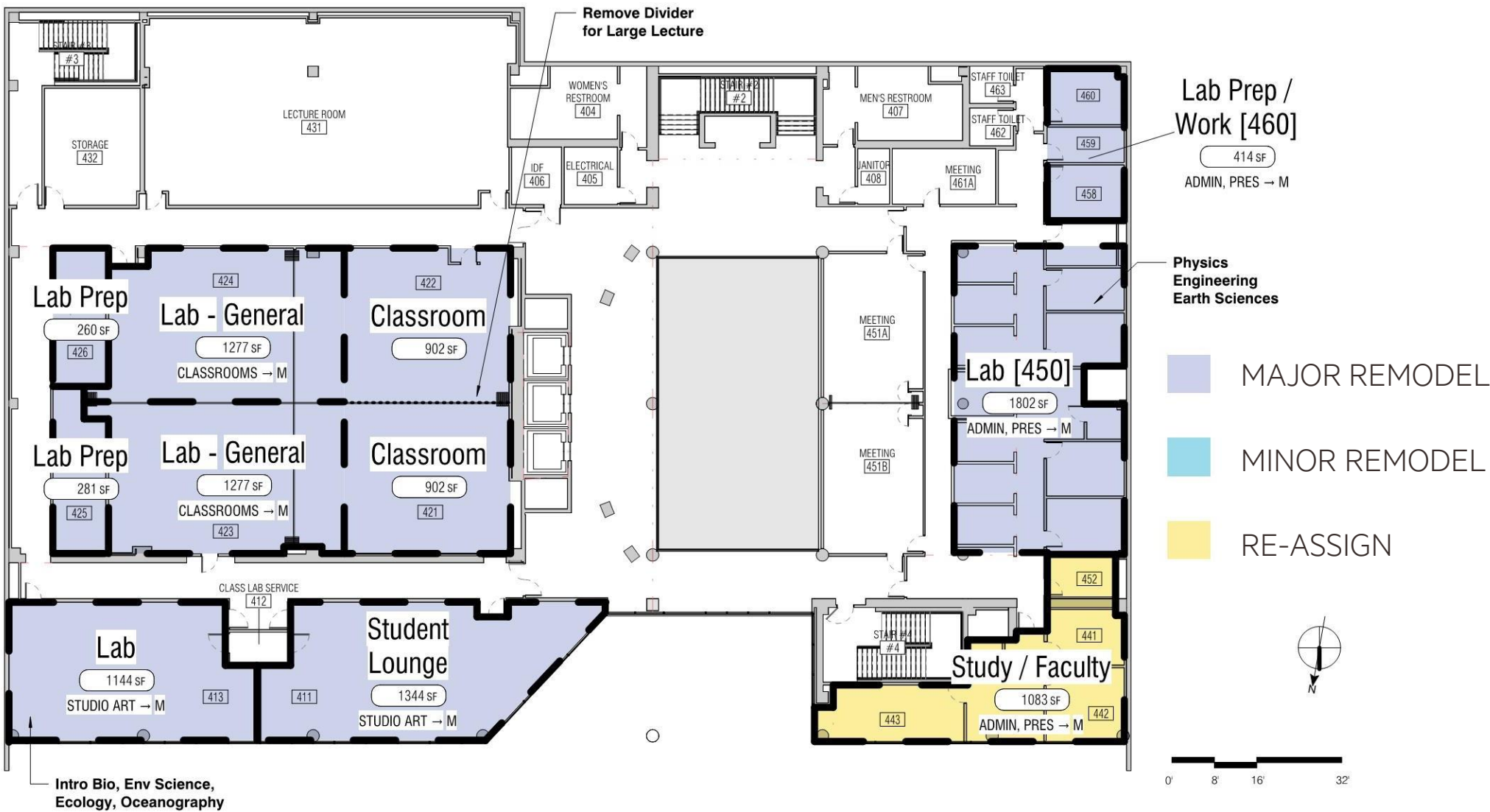
# FLOOR 2 - 2050 CENTER ST.



# FLOOR 3 - 2050 CENTER ST.



# FLOOR 4 - 2050 CENTER ST.



# FLOOR 5 - 2050 CENTER ST.



# PROGRAM ASPIRATIONS

- UNIFIED
- WELCOMING
- ACTIVE
- FLEXIBLE
- HEALTHY
- SUSTAINABLE
- And...