

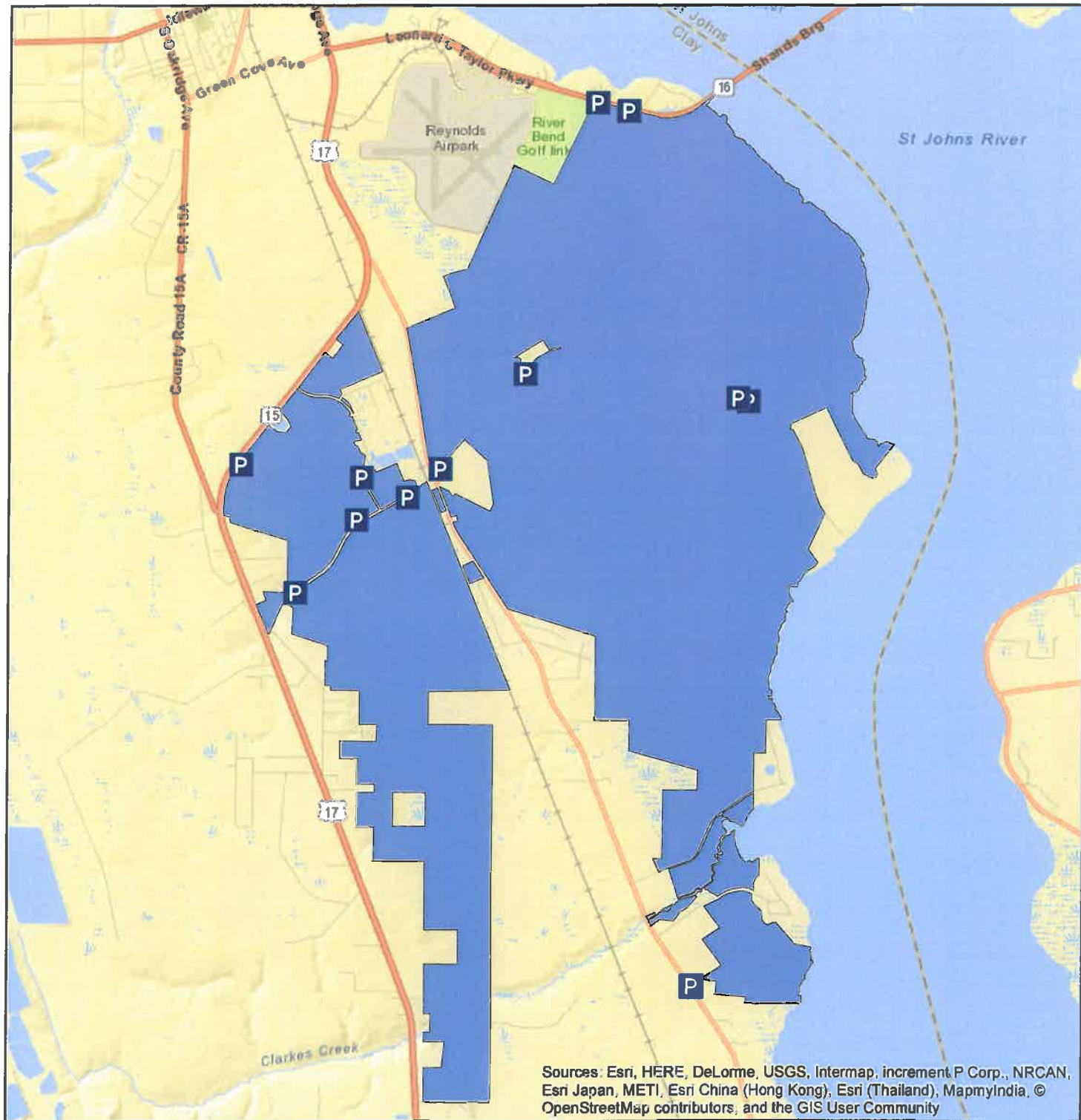
# North Region Large Machine-Levee\_Mowing Location, Acreage and Frequency

Pages 1-30

## Bayard Conservation Area

### Large Machine Mowing

Levee/Roads	Map Page	Mowing Type	Frequency	Average Width	Length (miles)	Acres (Calculated)
Borrow Pit Road		Batwing	Modified Monthly	25 feet	1.00	3.00
Cattail Creek Road		Batwing	Modified Monthly	15 feet	0.30	0.50
Cut Through Road		Batwing	Modified Monthly	35 feet	1.00	4.00
Davis Landing Rd		Batwing	Modified Monthly	35 feet	1.60	6.80
Dove Field Loop		Batwing	Modified Monthly	35 feet	0.30	1.10
Eagle Landing Road		Batwing	Modified Monthly	15 feet	0.60	1.10
Lindsey Lane		Batwing	Modified Monthly	35 feet	2.00	8.30
Middle Road		Batwing	Modified Monthly	25 feet	2.80	8.50
Nels Honorarial Hwy West		Batwing	Modified Monthly	15 feet	0.90	1.60
None		Batwing	Modified Monthly	10 feet	0.60	0.80
None		Batwing	Modified Monthly	25 feet	0.50	1.40
None		Batwing	Modified Monthly	15 feet	0.70	1.30
Pearls Trail		Batwing	Modified Monthly	35 feet	2.10	9.00
Pearl's Trail		Batwing	Modified Monthly	25 feet	0.50	1.50
Peeler Br Road		Batwing	Modified Monthly	15 feet	0.60	1.00
Pole Barn Road		Batwing	Modified Monthly	25 feet	2.00	5.90
Road 10		Batwing	Modified Monthly	25 feet	1.00	2.90
Road 20		Batwing	Modified Monthly	25 feet	0.30	0.90
Road 21		Batwing	Modified Monthly	15 feet	0.30	0.50
Road 3		Batwing	Modified Monthly	25 feet	0.50	1.30
Road 39		Batwing	Modified Monthly	25 feet	0.40	1.20
Road 4		Batwing	Modified Monthly	25 feet	1.00	3.10
Road 45		Batwing	Modified Monthly	15 feet	0.40	0.70
Road 47		Batwing	Modified Monthly	15 feet	0.30	0.50
Road 5		Batwing	Modified Monthly	25 feet	0.50	1.50
Road 50		Batwing	Modified Monthly	15 feet	0.40	0.70
Road 8		Batwing	Modified Monthly	15 feet	0.70	1.30
Road 9		Batwing	Modified Monthly	25 feet	1.70	5.30
Tower Loop		Batwing	Modified Monthly	15 feet	0.60	1.10
White Trail Access Road		Batwing	Modified Monthly	15 feet	0.60	1.00
<b>Total Modified Monthly:</b>						<b>77.80</b>
<b>Total Semi-Annual:</b>						<b>0.00</b>
<b>Total Batwing Acres:</b>						<b>77.80</b>

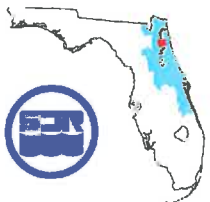


### St. Johns River Water Management

Bayard Conservation Area

563 State Road 16

Green Cove Springs, FL 32043



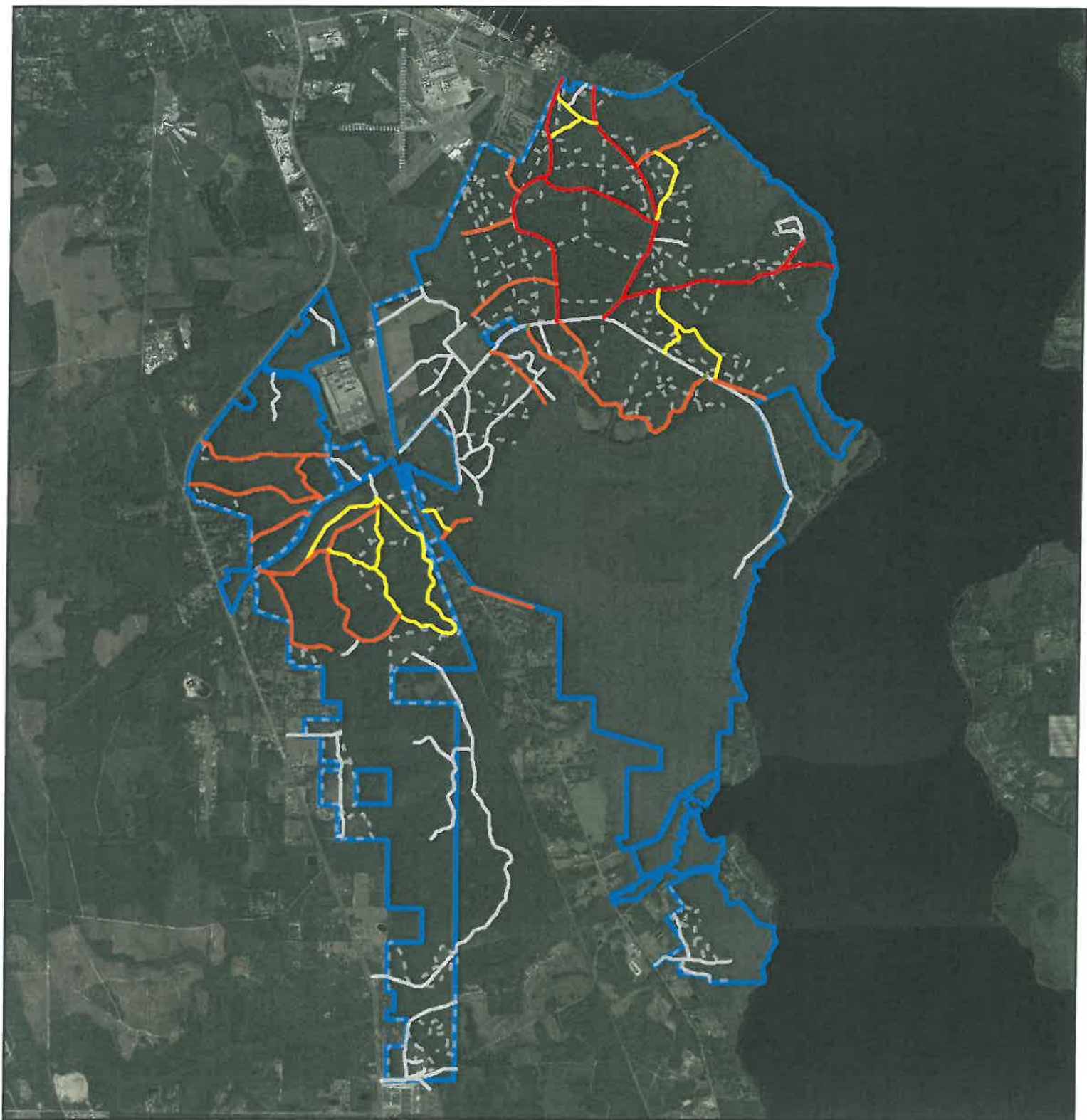
0.650.325 0 0.65 Miles

1 = 63689

#### Legend

- NR Parking Areas
- Bayard Conservation Area
- Black Creek Ravines Conservation Area
- Deep Creek Conservation Area
- Dunns Creek Conservation Area
- Gourd Island Conservation Area
- Jullington-Darlin Preserve
- Moses Creek Conservation Area
- Murphy Creek Conservation Area
- North Region Mitigation Archipelago
- Peilber Creek Conservation Area
- Stokes Landing Conservation Area
- Thomas Creek Conservation Area

The St. Johns River Water Management District prepares and uses this information for its own purposes and this information may not be suitable for other purposes. This information is provided as is. Further documentation of this data can be obtained by contacting: St. Johns River Water Management District, Geographic Information Systems, Program Management, P.O. Box 1429, 4049 Reid Street Palatka, Florida 32178-1429 Tel: (386) 329-4176.



**Bayard Conservation Area  
Road Network By Width**



0 0.3 0.6 1.2 Miles

1:63360



**Legend**

**Width (feet)**

- 15 feet average
- 25 feet average
- 35 feet average
- Firelines
- District Roads
- NR Property Boundaries

The St. Johns River Water Management District prepares and uses this information for its own purposes and this information may not be suitable for other purposes. This information is provided as is. Further documentation of this data can be obtained by contacting: St. Johns River Water Management District, Geographic Information Systems, Program Management, P.O. Box 1429, 4049 Reid Street Palatka, Florida 32178-1429 Tel: (386) 329-4176.



**Bayard Conservation Area  
Northern Unit  
Road Network By Width**



0 0.1 0.2 0.4 Miles

1:25700



**Legend**

**Width (feet)**

— 15 feet average

— 25 feet average

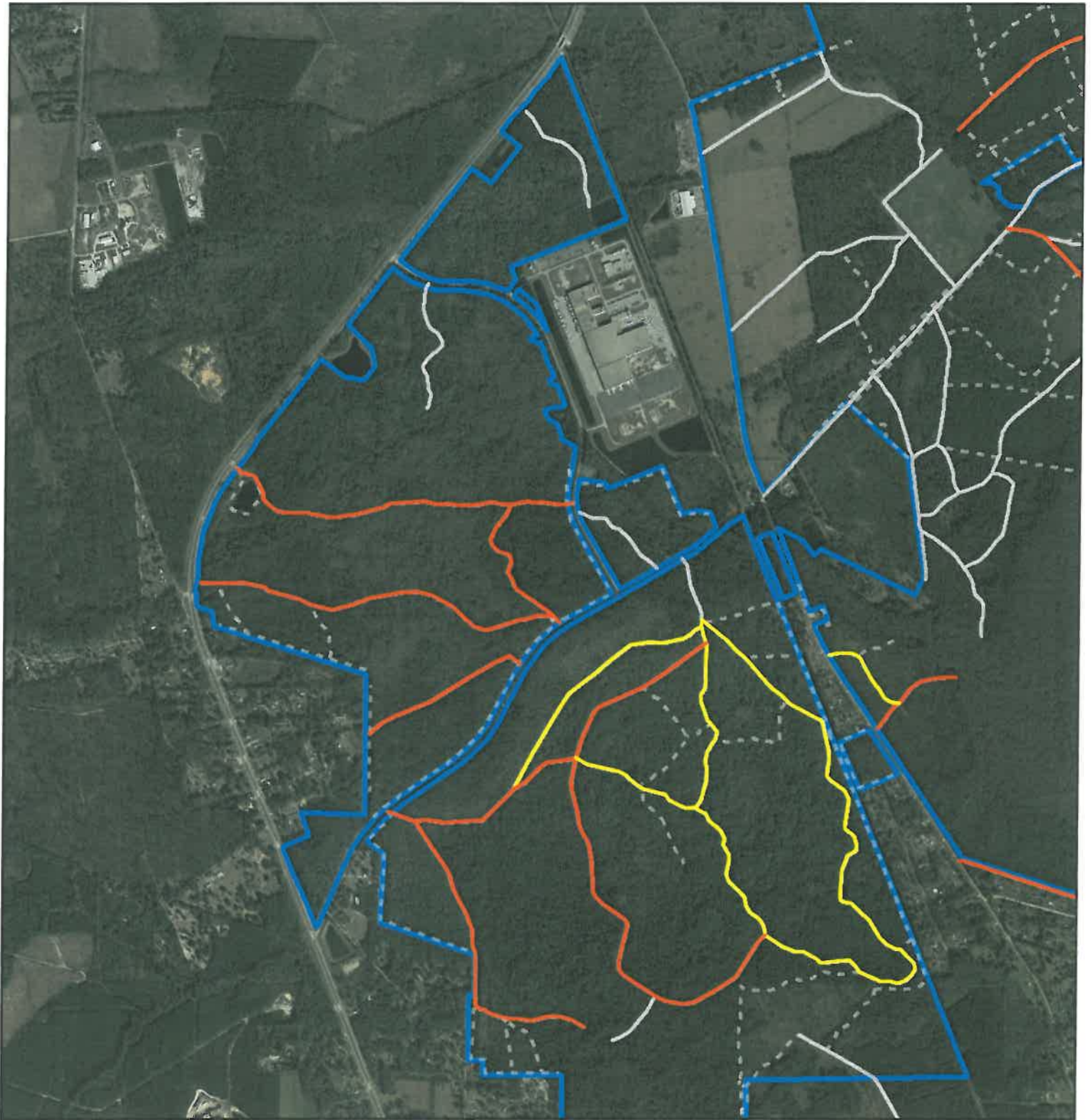
— 35 feet average

--- Firelines

— District Roads

□ NR Property Boundaries

The St. Johns River Water Management District prepares and uses this information for its own purposes and this information may not be suitable for other purposes. This information is provided as is. Further documentation of this data can be obtained by contacting: St. Johns River Water Management District, Geographic Information Systems, Program Management, P.O. Box 1429, 4049 Reid Street Palatka, Florida 32178-1429 Tel: (386) 329-4176.



**Bayard Conservation Area  
Western Unit  
Road Network By Width**



0 0.1 0.2 0.4 Miles

1:23697



**Legend**

**Width (feet)**

— 15 feet average

— 25 feet average

- - - Firelines

— District Roads

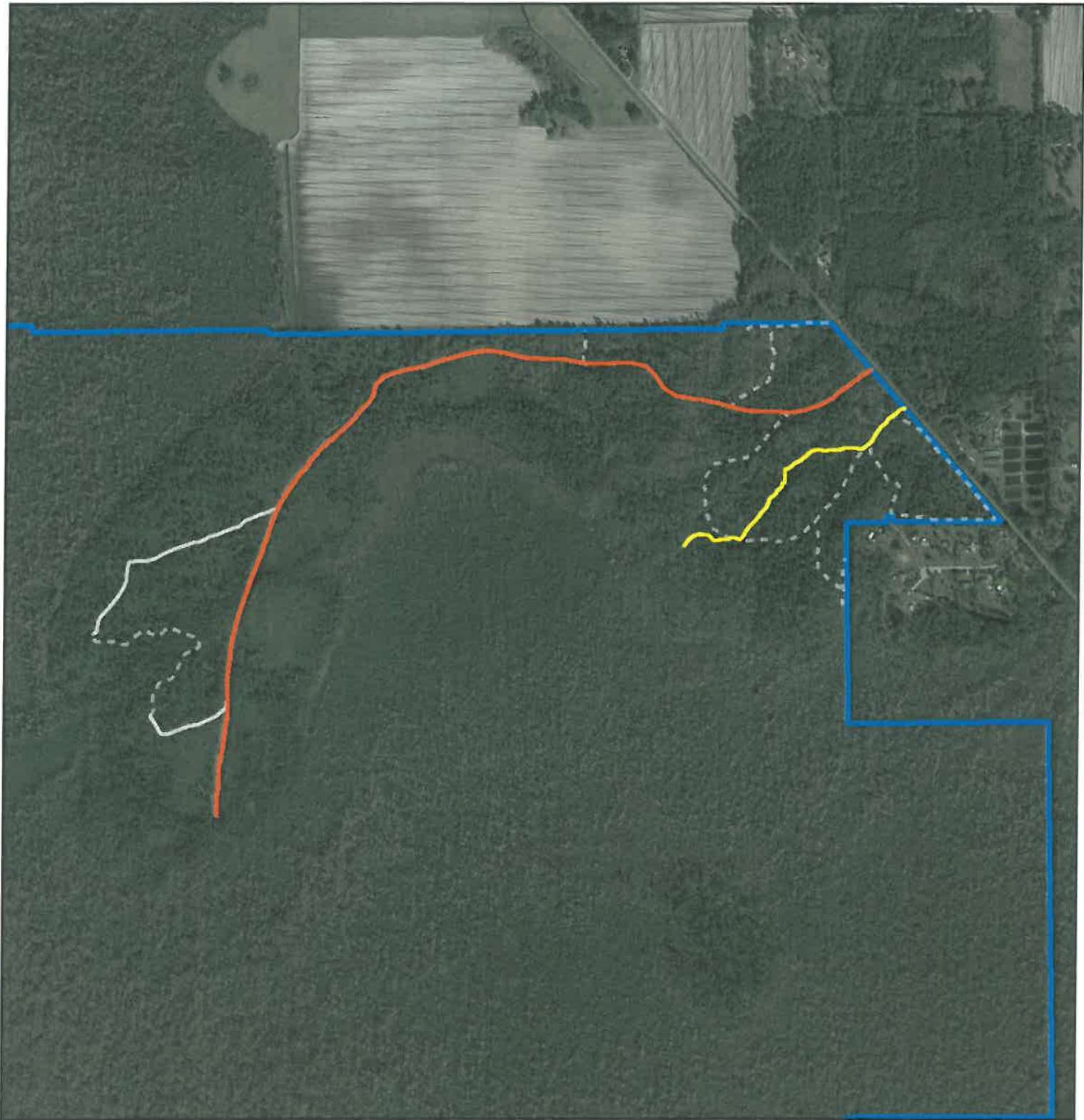
□ NR Property Boundaries

The St. Johns River Water Management District prepares and uses this information for its own purposes and this information may not be suitable for other purposes. This information is provided as is. Further documentation of this data can be obtained by contacting: St. Johns River Water Management District, Geographic Information Systems, Program Management, P.O. Box 1429, 4049 Reid Street Palatka, Florida 32178-1429 Tel: (386) 329-4176.

## Deep Creek Conservation Area-Lambert Parcel

### Large Machine Mowing

Levee/Roads	Map Page	Mowing Type	Frequency	Average Width	Length (miles)	Acres (Calculated)
None		Batwing	Modified Monthly	15 feet	0.4	0.7
None		Batwing	Modified Monthly	15 feet	1.3	2.3
<b>Total Modified Monthly:</b>						<b>3.00</b>
<b>Total Semi-Annual:</b>						<b>0.00</b>
<b>Total Batwing Acres:</b>						<b>3.00</b>



**Deep Creek Conservation Area  
Lambert Tract  
Road Network With  
Highlighted Mowing Extent**



0 0.05 0.1 0.2 Miles

1:10815



**Legend**

**Width (feet)**

 15 feet average

 25 feet average

 Firelines

 District Roads

 NR Property Boundaries

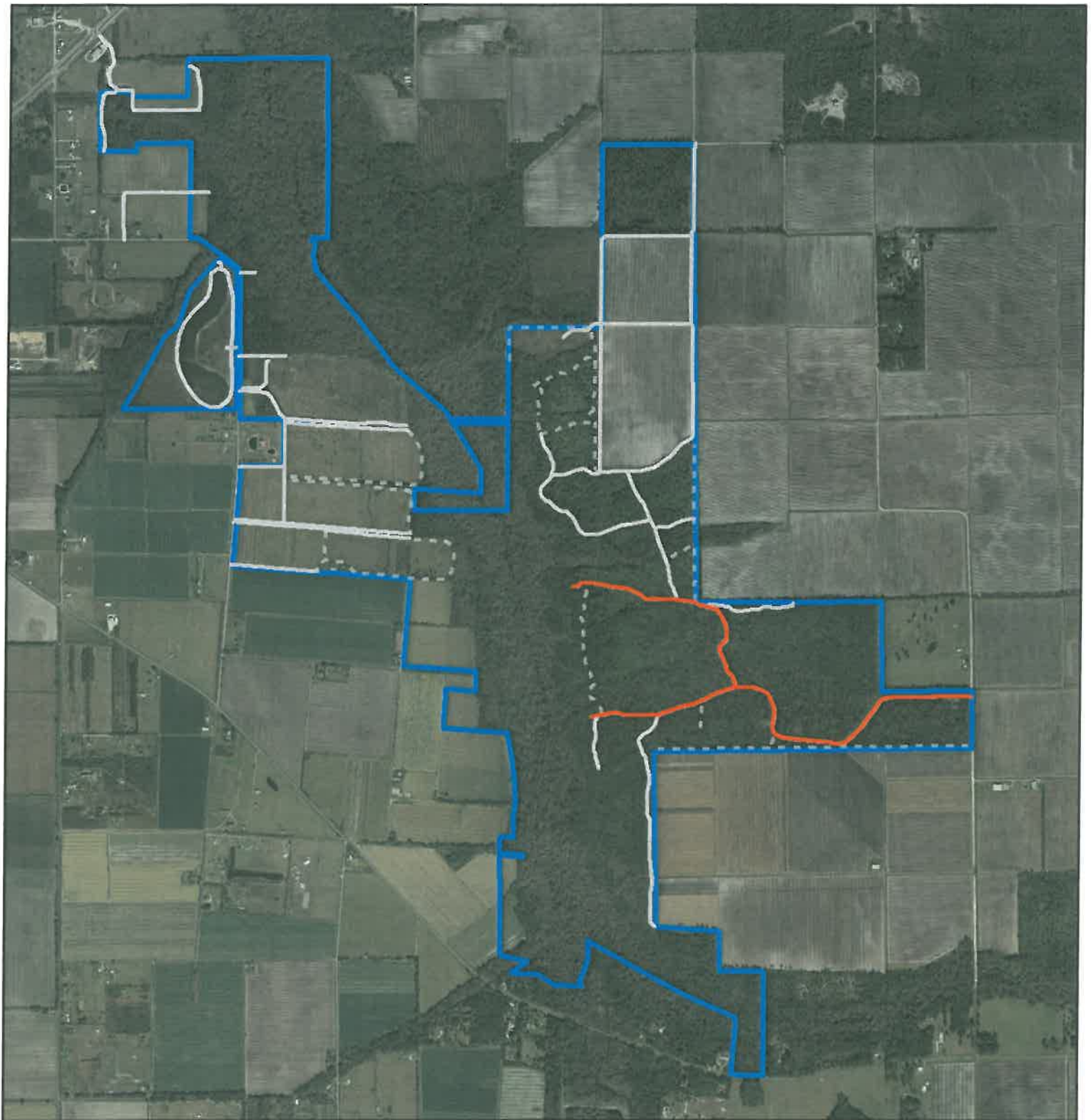
The St. Johns River Water Management District prepares and uses this information for its own purposes and this information may not be suitable for other purposes. This information is provided as is. Further documentation of this data can be obtained by contacting: St. Johns River Water Management District, Geographic Information Systems, Program Management, P.O. Box 1429, 4049 Reid Street Palatka, Florida 32178-1429 Tel: (386) 329-4176.

**Deep Creek Conservation Area-Yarborough Parcel**

**Large Machine Mowing**

Levee/Roads	Map Page	Mowing Type	Frequency	Average Width	Length (miles)	Acres (Calculated)
Road 10		Batwing	Semi-Annual	25 feet	0.66	2
Road 19		Batwing	Semi-Annual	25 feet	1.23	3.7
<i>Total Modified Monthly:</i>						<b>0.00</b>
<i>Total Semi-Annual:</i>						<b>5.70</b>
<i>Total Batwing Acres:</i>						<b>5.70</b>





**Deep Creek Conservation Area  
Yarborough Tract  
Road Network By Width**



0 0.1 0.2 0.4 Miles

1:24000



**Legend**

**Width (feet)**

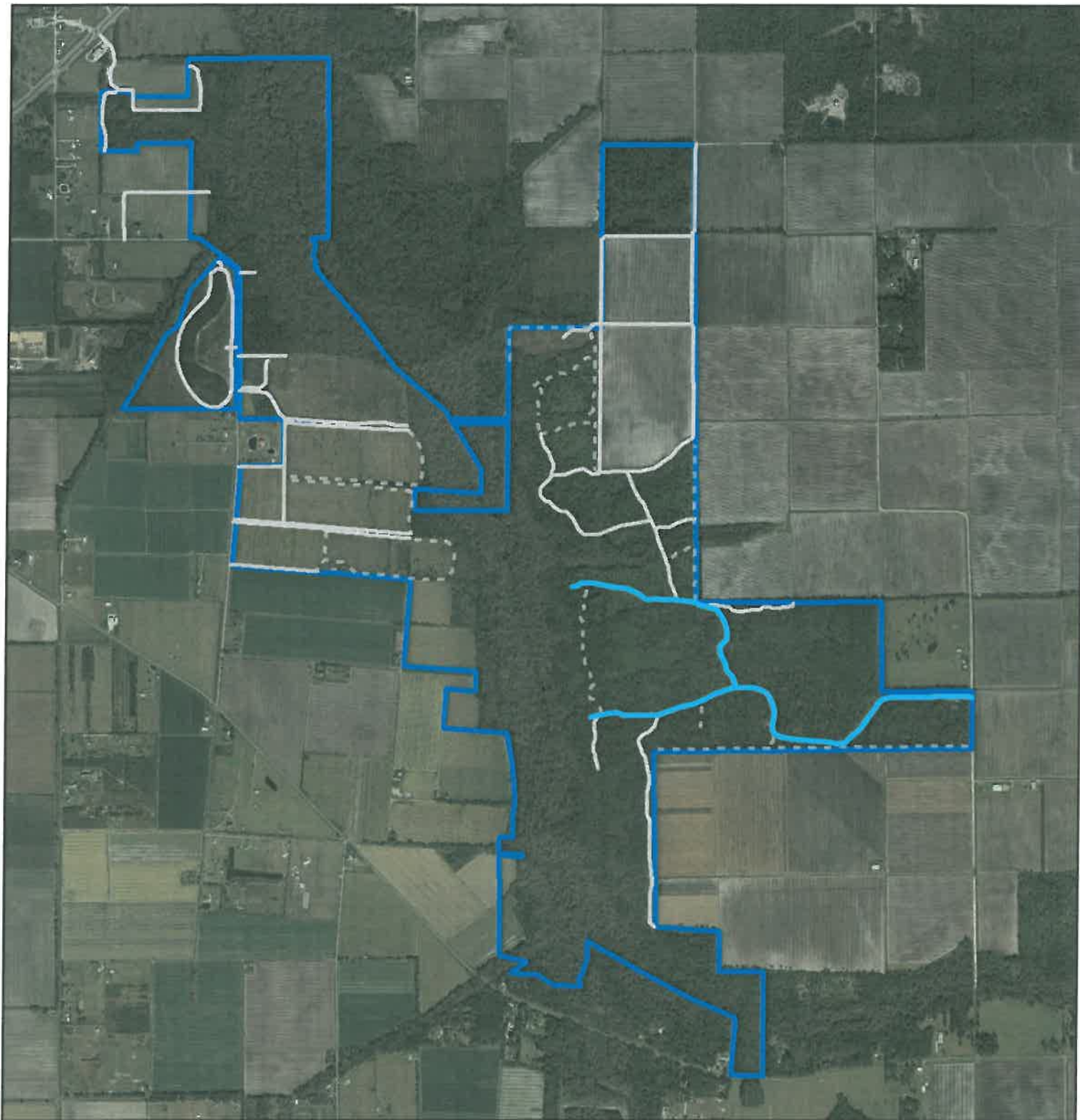
 25 feet average

 Firelines

 District Roads

 NR Property Boundaries

The St. Johns River Water Management District prepares and uses this information for its own purposes and this information may not be suitable for other purposes. This information is provided as is. Further documentation of this data can be obtained by contacting: St. Johns River Water Management District, Geographic Information Systems, Program Management, P.O. Box 1429, 4049 Reid Street Palatka, Florida 32178-1429 Tel: (386) 329-4176.



**Deep Creek Conservation Area  
Yarborough Tract  
Road Network With  
Highlighted Mowing Extent**



0 0.1 0.2 0.4 Miles







1:24000



**Legend**

**Maintenance Cycle**

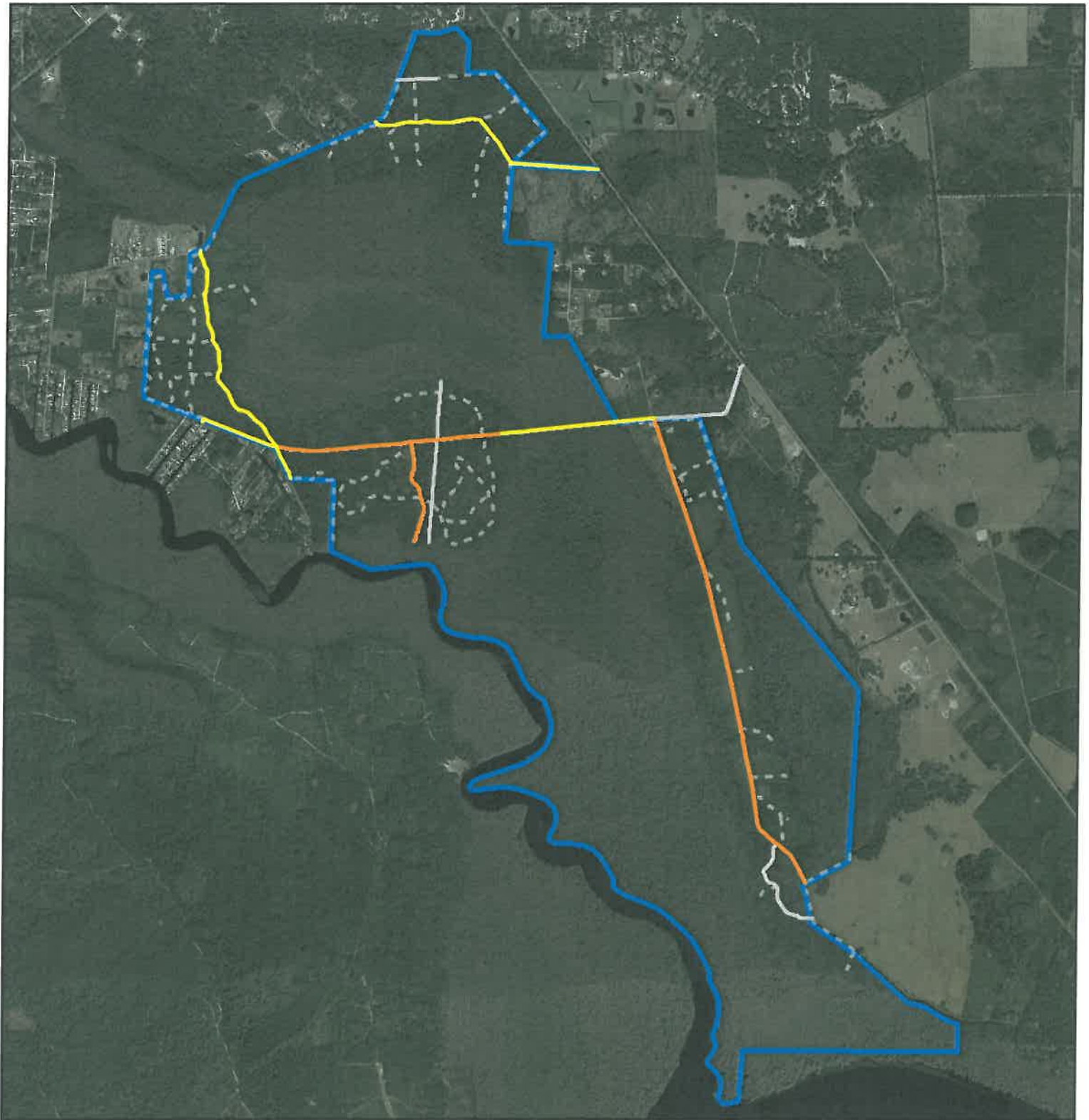
-  Every Six Months
-  Firelines
-  District Roads
-  NR Property Boundaries

The St. Johns River Water Management District prepares and uses this information for its own purposes and this information may not be suitable for other purposes. This information is provided as is. Further documentation of this data can be obtained by contacting: St. Johns River Water Management District, Geographic Information Systems, Program Management, P.O. Box 1429, 4049 Reid Street Palatka, Florida 32178-1429 Tel: (386) 329-4176.

## Dunns Creek Conservation Area

### Large Machine Mowing

Levee/Roads	Map Page	Mowing Type	Frequency	Average Width	Length (miles)	Acres (Calculated)
Camp Rd		Batwing	Modified Monthly	15 feet	0.40	0.80
Island Rd		Batwing	Modified Monthly	25 feet	2.00	6.10
Road 3		Batwing	Modified Monthly	15 feet	1.00	1.80
Road 4		Batwing	Modified Monthly	15 feet	1.10	1.90
Tram Road		Batwing	Modified Monthly	15 feet	1.70	3.10
Tram Road		Batwing	Modified Monthly	15 feet	0.20	0.30
<b>Total Modified Monthly:</b>						<b>14.00</b>
<b>Total Semi-Annual:</b>						<b>0.00</b>
<b>Total Batwing Acres:</b>						<b>14.00</b>



**Dunns Creek Conservation Area  
Road Network By Width**








0 0.15 0.3 0.6 Miles

1:35000



**Legend**

**Width (feet)**

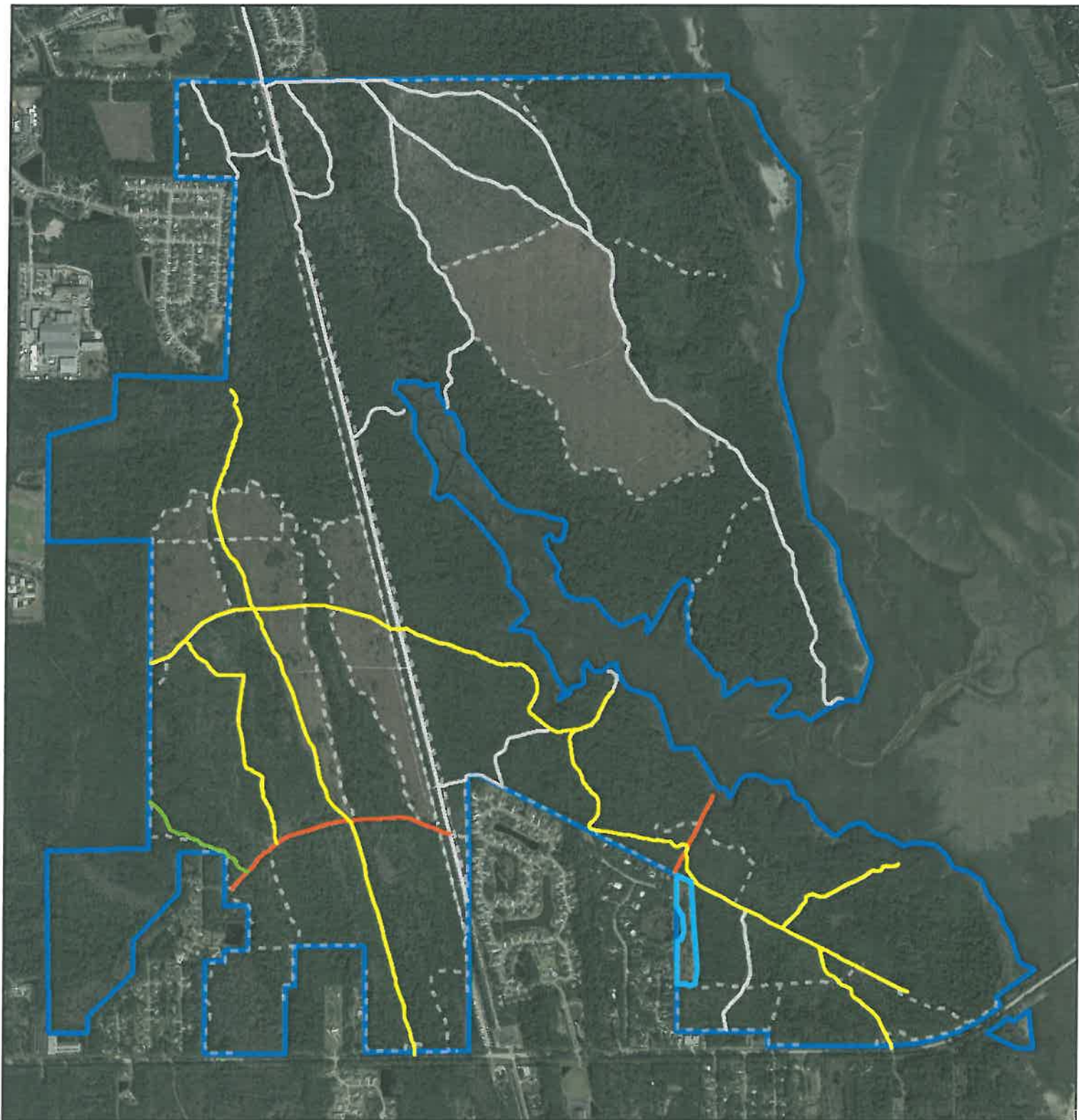
-  15 feet average
-  25 feet average
-  Firelines
-  District Roads
-  NR Property Boundaries

The St. Johns River Water Management District prepares and uses this information for its own purposes and this information may not be suitable for other purposes. This information is provided as is. Further documentation of this data can be obtained by contacting: St. Johns River Water Management District, Geographic Information Systems, Program Management, P.O. Box 1429, 4049 Reid Street Palatka, Florida 32178-1429 Tel: (386) 329-4176.

**Moses Creek Conservation Area**

**Large Machine Mowing**

Levee/Roads	Map Page	Mowing Type	Frequency	Average Width	Length (miles)	Acres (Calculated)
Bluff Road		Batwing	Modified Monthly	15 feet	0.2	0.4
Braddock Point Road		Batwing	Modified Monthly	15 feet	0.4	0.6
Hidden Creek Road		Batwing	Modified Monthly	15 feet	2.5	7.6
Morgan Trail		Batwing	Modified Monthly	15 feet	1.2	2.1
Road 3		Batwing	Modified Monthly	15 feet	0.3	0.8
Road 4		Batwing	Modified Monthly	15 feet	0.6	1.8
Optional Urban Interface Area		Batwing	Semi-Annual	N/a	N/A	6.1
<b>Total Modified Monthly:</b>						<b>13.30</b>
<b>Total Semi-Annual:</b>						<b>6.10</b>
<b>Total Batwing Acres:</b>						<b>19.40</b>



**Moses Creek Conservation Area  
Road Network By Width**









0 0.1 0.2 0.4 Miles

1:21000



**Legend**

**Width (feet)**

-  10 feet average
-  15 feet average
-  25 feet average
-  Firelines
-  District Roads
-  NR Property Boundaries

The St. Johns River Water Management District prepares and uses this information for its own purposes and this information may not be suitable for other purposes. This information is provided as is. Further documentation of this data can be obtained by contacting: St. Johns River Water Management District, Geographic Information Systems, Program Management, P.O. Box 1429, 4049 Reid Street Palatka, Florida 32178-1429 Tel: (386) 329-4178.



Optional area of urban interface mowing  
 Frequency = biannually  
 ~ 266080 feet square  
 ~ 6.1 acres

### Moses Creek Conservation Area

#### Location Of Optional Urban Interface Mowing



0 0.015 0.03 0.06 Miles

1:3556



### Legend

#### Maintenance Cycle

-  Every Six Months
-  Monthly
-  Firelines
-  District Roads
-  NR Property Boundaries

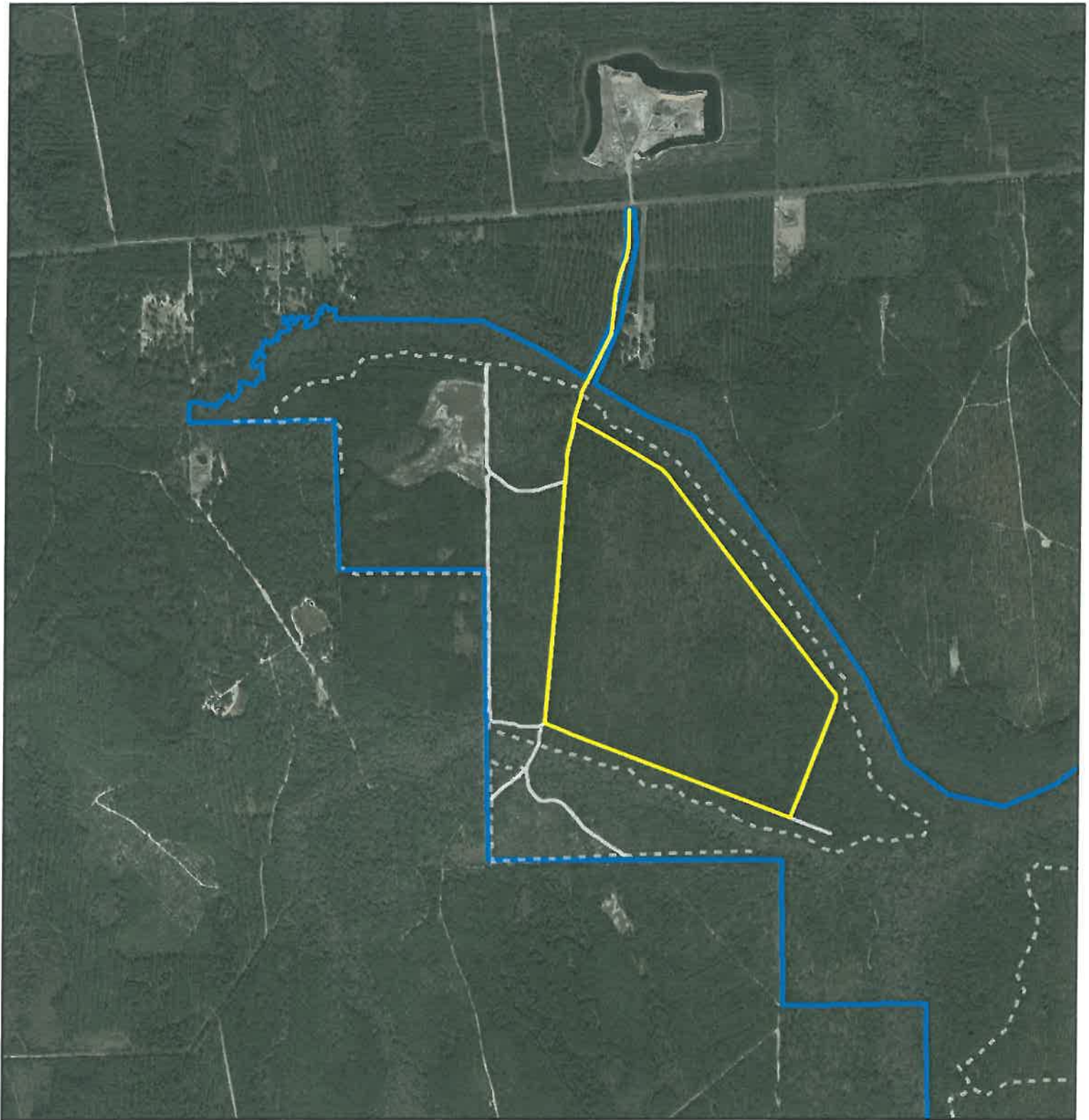
The St. Johns River Water Management District prepares and uses this information for its own purposes and this information may not be suitable for other purposes. This information is provided as is. Further documentation of this data can be obtained by contacting: St. Johns River Water Management District, Geographic Information Systems, Program Management, P.O. Box 1429, 4049 Reid Street Palatka, Florida 32178-1429 Tel: (386) 329-4176.

## Pellicer Creek Area

### Large Machine Mowing

Levee/Roads	Map Page	Mowing Type	Frequency	Average Width	Length (miles)	Acres (Calculated)
None		Batwing	Semi-Annual	15 feet	0.9	1.6
None		Batwing	Semi-Annual	15 feet	0.5	0.8
None		Batwing	Semi-Annual	15 feet	0.6	1.1
None		Batwing	Semi-Annual	15 feet	0.3	0.6
<b>Total Modified Monthly:</b>						<b>0.00</b>
<b>Total Semi-Annual:</b>						<b>4.10</b>
<b>Total Batwing Acres:</b>						<b>4.10</b>





**Pellicer Creek Conservation Area  
Road Network By Width**



0 0.05 0.1 0.2 Miles

1:14937



**Legend**

**Width (feet)**

— 15 feet average

Firelines

— District Roads

□ Property Boundary

The St. Johns River Water Management District prepares and uses this information for its own purposes and this information may not be suitable for other purposes. This information is provided as is. Further documentation of this data can be obtained by contacting: St. Johns River Water Management District, Geographic Information Systems, Program Management, P.O. Box 1429, 4049 Reid Street Palatka, Florida 32178-1429 Tel: (386) 329-4176.

## Sample Swamp Area

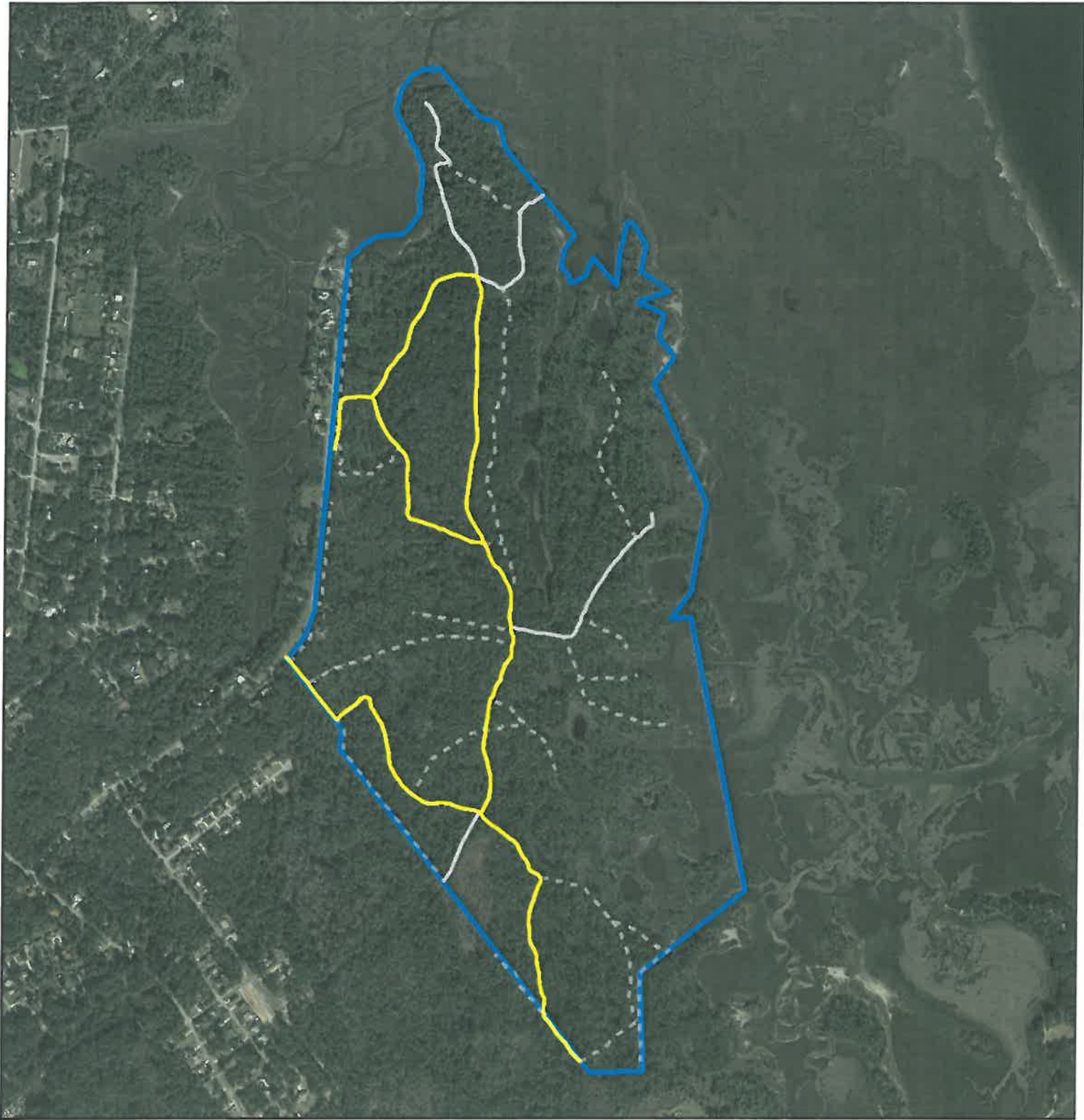
### Large Machine Mowing

Levee/Roads	Map Page	Mowing Type	Frequency	Average Width	Length (miles)	Acres (Calculated)
None		Batwing	Semi-Annual	25 feet	0.9	2.6
None		Batwing	Semi-Annual	15 feet	0.4	0.8
<b>Total Levee Acres:</b>						<b>0.0</b>
<b>Total Batwing Acres:</b>						<b>3.4</b>

## Stokes Landing Area

### Large Machine Mowing

Levee/Roads	Map Page	Mowing Type	Frequency	Average Width	Length (miles)	Acres (Calculated)
Pond Road		Batwing	Modified Monthly	15 feet	0.4	0.7
Hike Road		Batwing	Modified Monthly	15 feet	0.3	0.5
Loop Road		Batwing	Modified Monthly	15 feet	1.4	2.6
<b>Total Modified Monthly:</b>						<b>3.80</b>
<b>Total Semi-Annual:</b>						<b>0.00</b>
<b>Total Batwing Acres:</b>						<b>3.80</b>



**Stokes Landing Conservation Area  
Road Network By Width**



1:11000



**Legend**

**Width (feet)**

 15 feet average

 Firelines

 District Roads

 NR Property Boundaries

The St. Johns River Water Management District prepares and uses this information for its own purposes and this information may not be suitable for other purposes. This information is provided as is. Further documentation of this data can be obtained by contacting: St. Johns River Water Management District, Geographic Information Systems, Program Management, P.O. Box 1429, 4049 Reid Street Palatka, Florida 32176-1429 Tel: (386) 329-4178.

### Thomas Creek Conservation Area - Oglivie Parcel

#### Large Machine Mowing

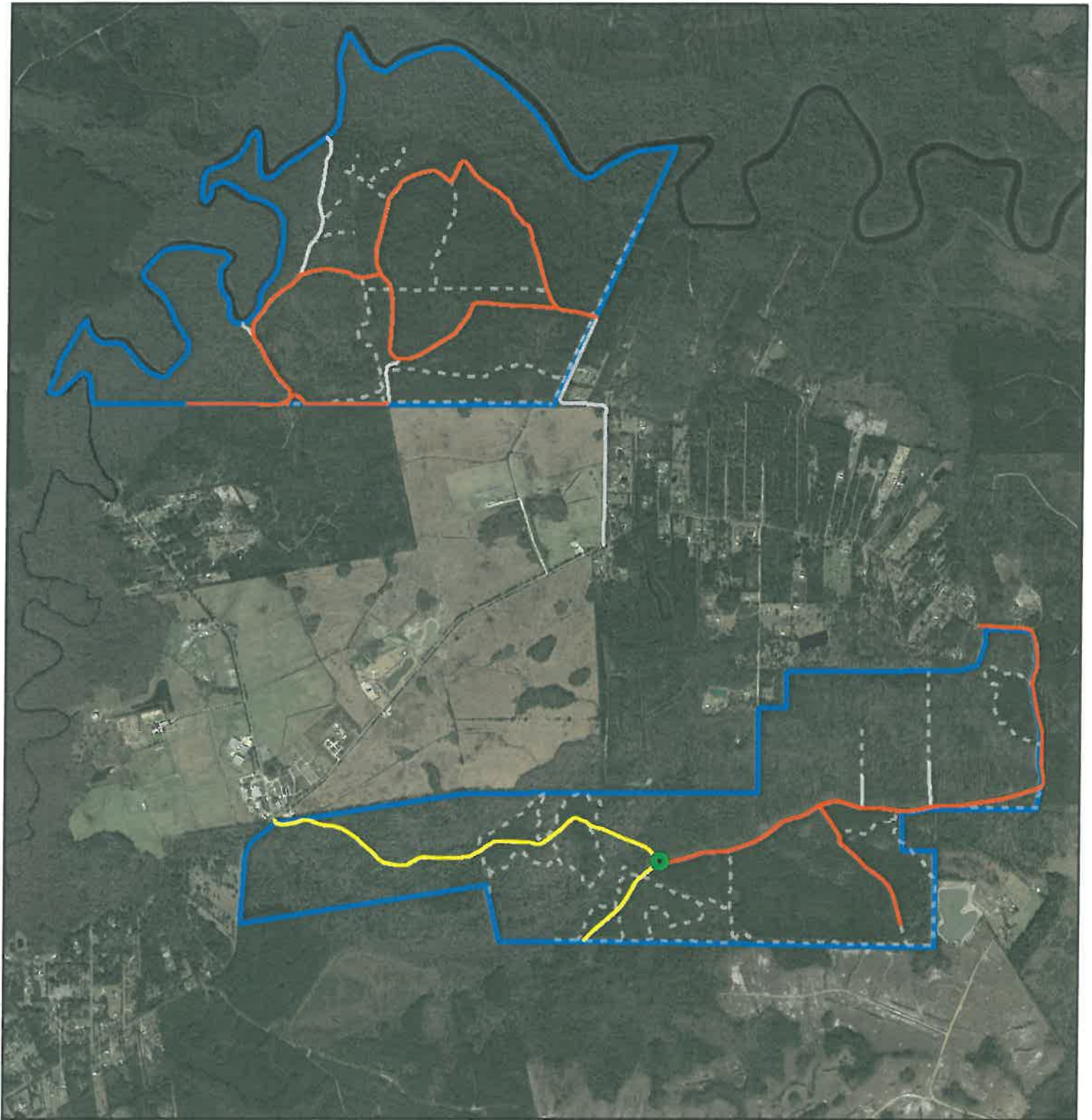
Levee/Roads	Map Page	Mowing Type	Frequency	Average Width	Length (miles)	Acres (Calculated)
None		Batwing	Modified Monthly	15 feet	0.3	0.6
Major Loop Road West		Batwing	Modified Monthly	10 feet	0.7	0.9
Major Loop Road East		Batwing	Modified Monthly	25 feet	1.2	3.7
Major Loop Road East		Batwing	Modified Monthly	30 feet	0.8	3
Southern Boundary Road		Batwing	Modified Monthly	15 feet	0.3	0.6
<b>Total Modified Monthly:</b>						<b>7.30</b>
<b>Total Semi-Annual:</b>						<b>0.00</b>
<b>Total Batwing Acres:</b>						<b>7.30</b>

### Thomas Creek Conservation Area - Wright Parcel

Levee/Roads	Map Page	Mowing Type	Frequency	Average Width	Length (miles)	Acres (Calculated)
Wright Road		Batwing	Modified Monthly	25 feet	0.6	1.9
Ethel Road		Batwing	Modified Monthly	15 feet	0.7	1.2
Wright Road		Batwing	Modified Monthly	25 feet	0.6	1.7
Wright Road		Batwing	Modified Monthly	15 feet	0.3	0.6
Telemetry Loop		Batwing	Modified Monthly	15 feet	0.1	0.1
Canal Road		Batwing	Modified Monthly	25 feet	0.5	1.4
Ethel Road		Batwing	Modified Monthly	15 feet	0.2	0.4
Ethel Road		Batwing	Modified Monthly	15 feet	0.4	0.7
<b>Total Modified Monthly:</b>						<b>8.00</b>
<b>Total Semi-Annual:</b>						<b>0.00</b>
<b>Total Batwing Acres:</b>						<b>8.00</b>

### Thomas Creek Conservation Area - Red Shirt Parcel

Levee/Roads	Map Page	Mowing Type	Frequency	Average Width	Length (miles)	Acres (Calculated)
Road 4		Batwing	Semi-Annual	15 feet	0.3	0.5
Road 6		Batwing	Semi-Annual	15 feet	0.2	0.4
Road 7		Batwing	Semi-Annual	15 feet	1.1	1.9
Road 8		Batwing	Semi-Annual	15 feet	0.4	0.7
Telemetry Loop		Batwing	Semi-Annual	16 feet	0.1	0.1
<b>Total Modified Monthly:</b>						<b>0.00</b>
<b>Total Semi-Annual:</b>						<b>3.60</b>
<b>Total Batwing Acres:</b>						<b>3.60</b>



**Thomas Creek Conservation Area  
Road Network By Width**



0 0.125 0.25 0.5 Miles

1:26000



**Legend**

 Telemetry Site

**Width (feet)**

 15 feet average

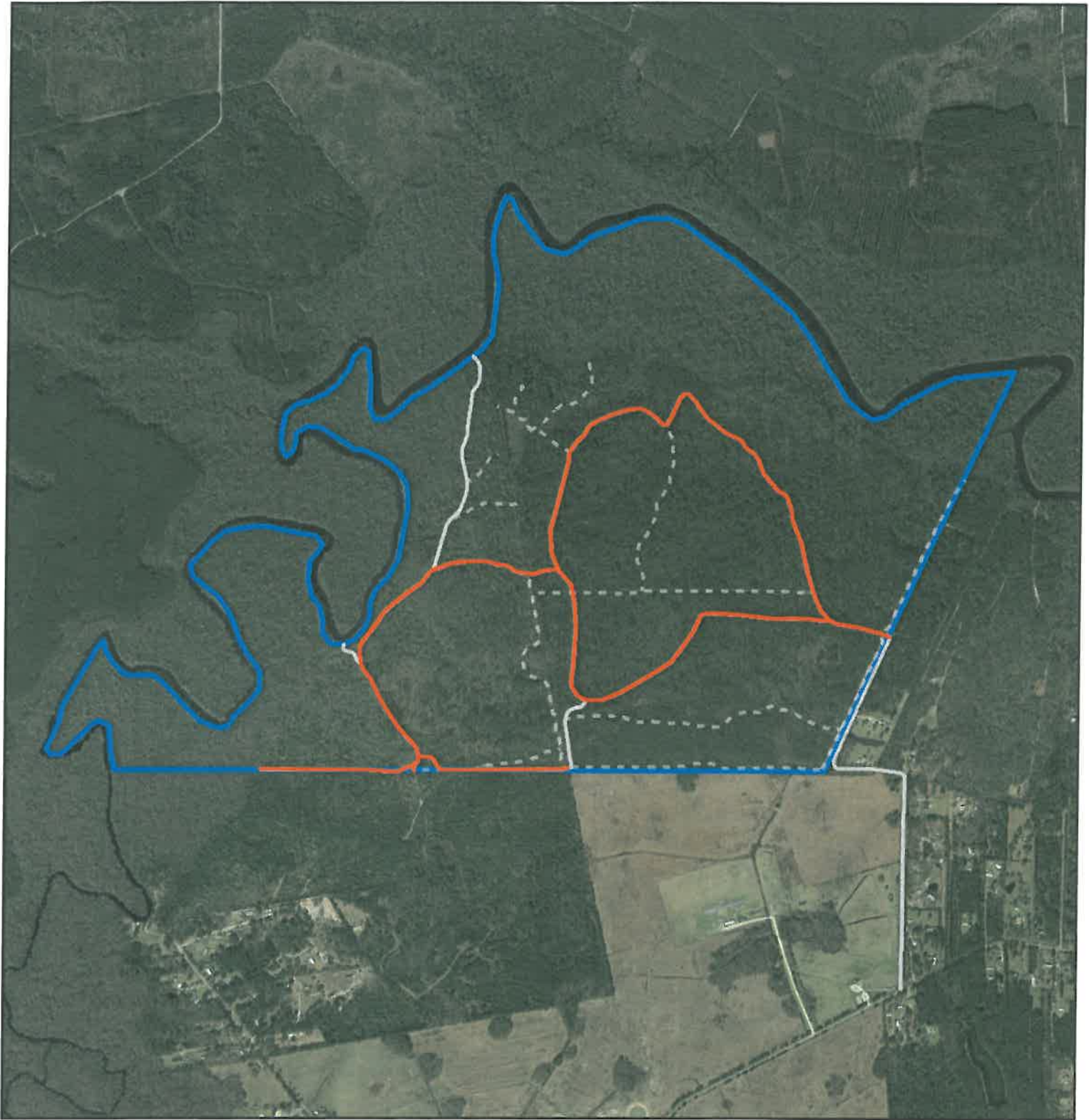
 25 feet average

 Firelines

 District Roads

 NR Property Boundaries

The St. Johns River Water Management District prepares and uses this information for its own purposes and this information may not be suitable for other purposes. This information is provided as is. Further documentation of this data can be obtained by contacting: St. Johns River Water Management District, Geographic Information Systems, Program Management, P.O. Box 1429, 4049 Reid Street Palatka, Florida 32178-1429 Tel: (386) 329-4176.



**Thomas Creek Conservation Area  
Ogilvie Tract  
Road Network By Width**






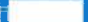
0 0.075 0.15 0.3 Miles

1:16823

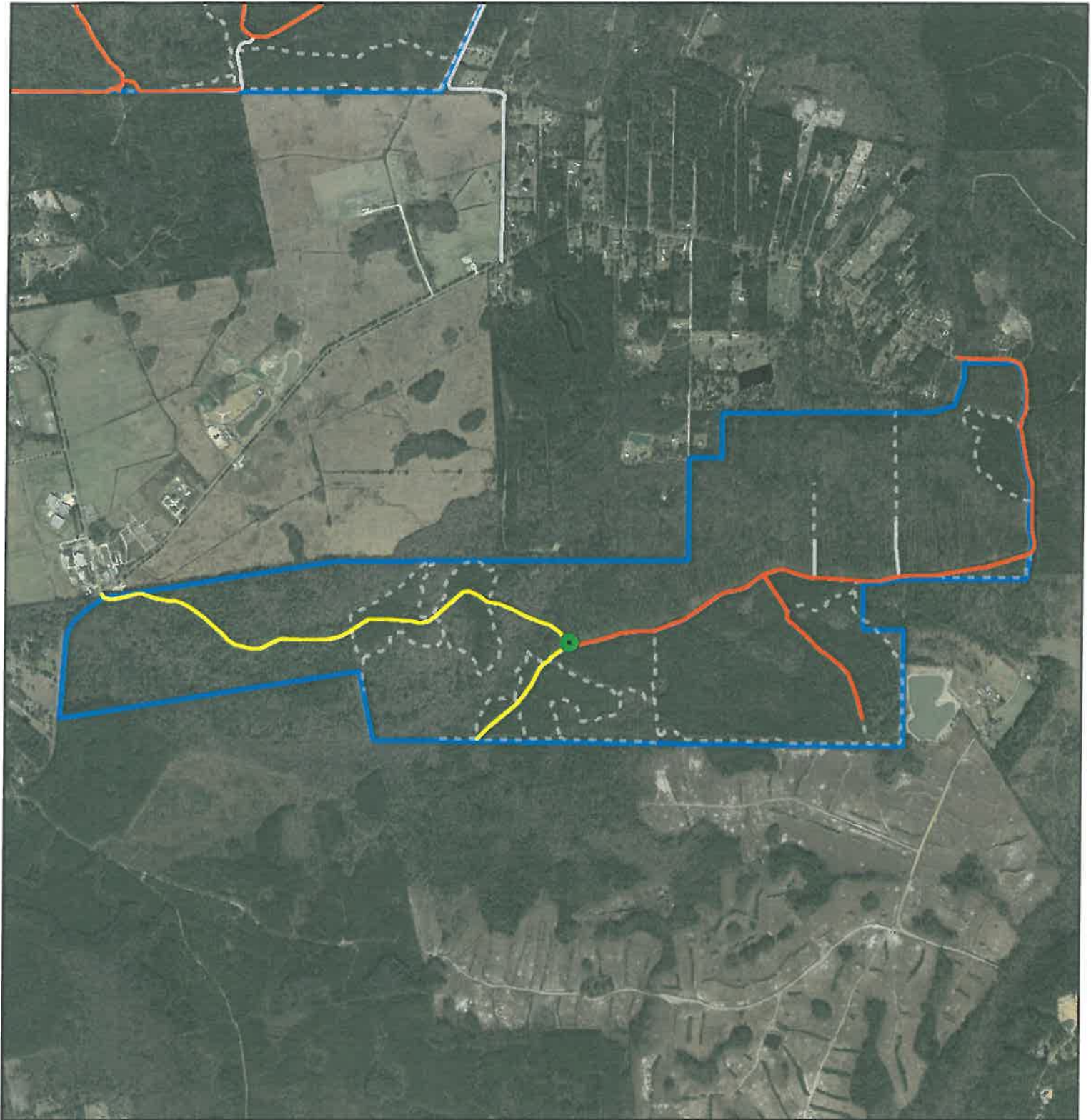


**Legend**

**Width (feet)**

-  25 feet average
-  Firelines
-  District Roads
-  NR Property Boundaries

The St. Johns River Water Management District prepares and uses this information for its own purposes and this information may not be suitable for other purposes. This information is provided as is. Further documentation of this data can be obtained by contacting: St. Johns River Water Management District, Geographic Information Systems, Program Management, P.O. Box 1429, 4049 Reid Street Palatka, Florida 32178-1429 Tel: (386) 329-4176.



**Thomas Creek Conservation Area  
Wright Tract  
Road Network By Width**



0 0.1 0.2 0.4 Miles

1:21475



**Legend**

 Telemetry Site

**Width (feet)**

 15 feet average

 25 feet average

 Firelines

 District Roads

 NR Property Boundaries

The St. Johns River Water Management District prepares and uses this information for its own purposes and this information may not be suitable for other purposes. This information is provided as is. Further documentation of this data can be obtained by contacting: St. Johns River Water Management District, Geographic Information Systems, Program Management, P.O. Box 1429, 4049 Reid Street Palatka, Florida 32178-1429 Tel: (386) 329-4176.





Thomas Creek Conservation Area  
Wright Tract  
Telemetry Loop Mowing



0.0015003 0.006 Miles



1:411



**Legend**

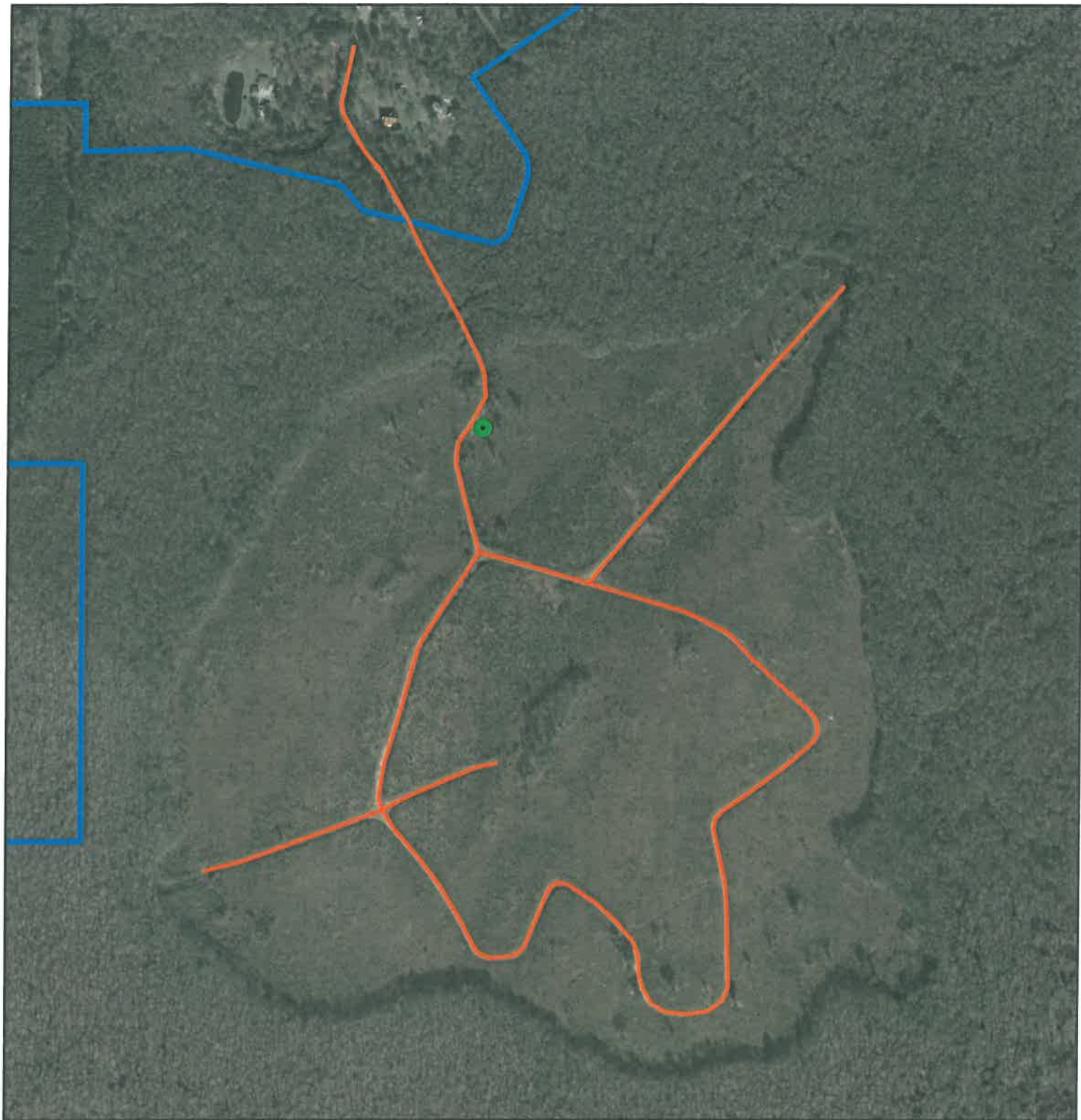
 Telemetry Site

 Telemetry Loop

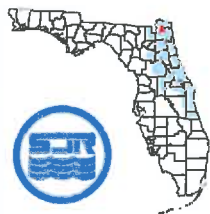
**Maintenance Cycle**

 Monthly

The St. Johns River Water Management District prepares and uses this information for its own purposes and this information may not be suitable for other purposes. This information is provided as is. Further documentation of this data can be obtained by contacting: St. Johns River Water Management District, Geographic Information Systems, Program Management, P.O. Box 1429, 4049 Reid Street Palatka, Florida 32178-1429 Tel: (386) 329-4176.



**Thomas Creek Conservation Area  
Redshirt Tract  
Road Network By Width**



0 0.0275 0.055 0.11 Miles



1:6000



**Legend**

 Telemetry Sites

**Width (feet)**

 25 feet average

 NR Property Boundaries

The St. Johns River Water Management District prepares and uses this information for its own purposes and this information may not be suitable for other purposes. This information is provided as is. Further documentation of this data can be obtained by contacting: St. Johns River Water Management District, Geographic Information Systems, Program Management, P.O. Box 1429, 4049 Reid Street Palatka, Florida 32178-1429 Tel: (386) 329-4176.



**Thomas Creek Conservation Area  
Redshirt Tract  
Telemetry Mowing Loop**



0 0.00175 0.0035 0.007 Miles



1:411



**Legend**

 Telemetry Site

 Telemetry Loop

**Maintenance Cycle**

 Every Six Months

The St. Johns River Water Management District prepares and uses this information for its own purposes and this information may not be suitable for other purposes. This information is provided as is. Further documentation of this data can be obtained by contacting: St. Johns River Water Management District, Geographic Information Systems, Program Management, P.O. Box 1429, 4049 Reid Street Palatka, Florida 32178-1429 Tel: (386) 328-4176.

## Twelve Mile Swamp

### Large Machine Mowing

Levee/Roads	Map Page	Mowing Type	Frequency	Average Width	Length (miles)	Acres (Calculated)
Road 4		Batwing	Semi-Annual	15 feet	0.6	1.1
Road 4		Batwing	Semi-Annual	15 feet	0.2	0.3
<b>Total Levee Acres:</b>						<b>0.0</b>
<b>Total Batwing Acres:</b>						<b>1.4</b>



**Twelve Mile Swamp Conservation Area  
West Augustine Tract  
Road Network By Width**



0 0.045 0.09 0.18 Miles



1:9775



**Legend**

**Width (feet)**

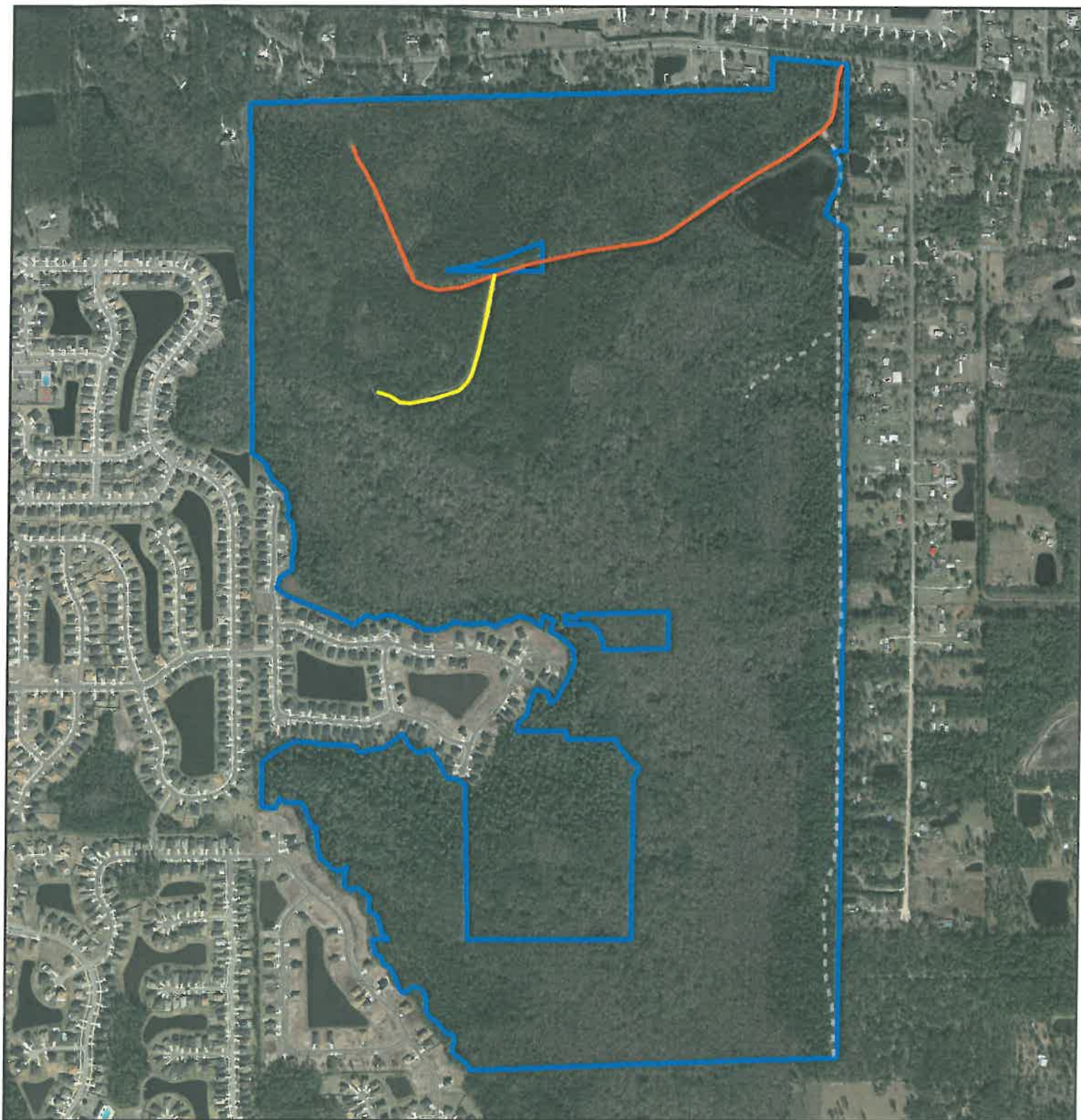
— 25 feet average

- - - Firelines

— District Roads

▭ NR Property Boundaries

The St. Johns River Water Management District prepares and uses this information for its own purposes and this information may not be suitable for other purposes. This information is provided as is. Further documentation of this data can be obtained by contacting: St. Johns River Water Management District, Geographic Information Systems, Program Management, P.O. Box 1429, 4049 Reid Street Palatka, Florida 32178-1429 Tel: (386) 329-4176.



**North Region Mitigation Archipelago  
(Sample Swamp)**

**Road Network By Width (Feet)**



0 0.05 0.1 0.2 Miles

1:11199



**Legend**

**Width (feet)**

 15 feet average

 25 feet average

 Firelines

 NR Property Boundaries

The St. Johns River Water Management District prepares and uses this information for its own purposes and this information may not be suitable for other purposes. This information is provided as is. Further documentation of this data can be obtained by contacting: St. Johns River Water Management District, Geographic Information Systems, Program Management, P.O. Box 1429, 4049 Reid Street Palatka, Florida 32178-1429 Tel: (386) 329-4176.