

North Central Large Machine Levee_Mowing Location, Acreage and Frequency

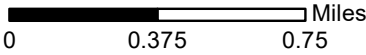
Pages 1-35

Clark Bay Conservation Area

Large Machine Mowing

Road Name	Map Page	Mowing Type	Frequency	Width Range (feet)	Average Width (feet)	Road Lenth (miles)	Acres (Calculated)
Road 1	1	Standard	Modified Monthly	21 - 30	25	2.98	9.00
Road 2	1	Standard	Modified Monthly	11 - 20	15	0.19	0.40
Road 3	1	Standard	Modified Monthly	11 - 20	15	0.66	1.20
Road 4	1	Standard	Modified Monthly	11 - 20	15	0.10	0.20
Road 5	1	Standard	Modified Monthly	11 - 20	15	0.17	0.30
Road 6	1	Standard	Modified Monthly	11 - 20	15	0.10	0.10
Road 7	1	Standard	Modified Monthly	11 - 20	15	0.17	0.30
Road 8	1	Standard	Modified Monthly	11 - 20	15	0.28	0.50
Road 9	1 & 2	Standard	Modified Monthly	11 - 20	15	0.88	1.60
Road 13	3	Standard	Modified Monthly	11 - 20	15	0.29	0.50
Road 14	3	Standard	Modified Monthly	21 - 30	25	0.65	2.00
Road 15	3	Standard	Modified Monthly	31 - 40	35	1.73	7.30
Road 16	3	Standard	Modified Monthly	21 - 30	25	0.50	1.50
Road 18a	3	Standard	Modified Monthly	21 - 30	25	0.98	3.00
Road 18b	3	Standard	Modified Monthly	21 - 30	25	1.06	3.20
Road 19	1	Standard	Modified Monthly	5 - 10	8	0.01	0.01
Road 24a	3	Standard	Modified Monthly	21 - 30	25	0.81	2.50
Sandy Lane 1	3	Standard	Modified Monthly	11 - 20	15	0.24	0.40
Sandy Lane 2	3	Standard	Modified Monthly	21 - 30	25	0.97	1.00
Total Modified Monthly:							35.01
Total Semi-Annual:							0.00
Total Standard Mowing Acres:							35.01

Clark Bay Conservation Area
Large Machine Mowing
September 2019



1:30,810

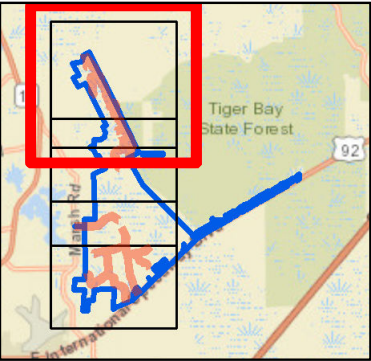


Legend

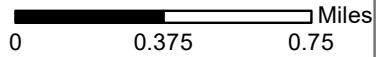
- Large Machine Mowing
- Primary Road
- Secondary Road Management
- Area Boundary

Map Page 1

Map Location



Clark Bay Conservation Area
Large Machine Mowing
September 2019



1:30,810

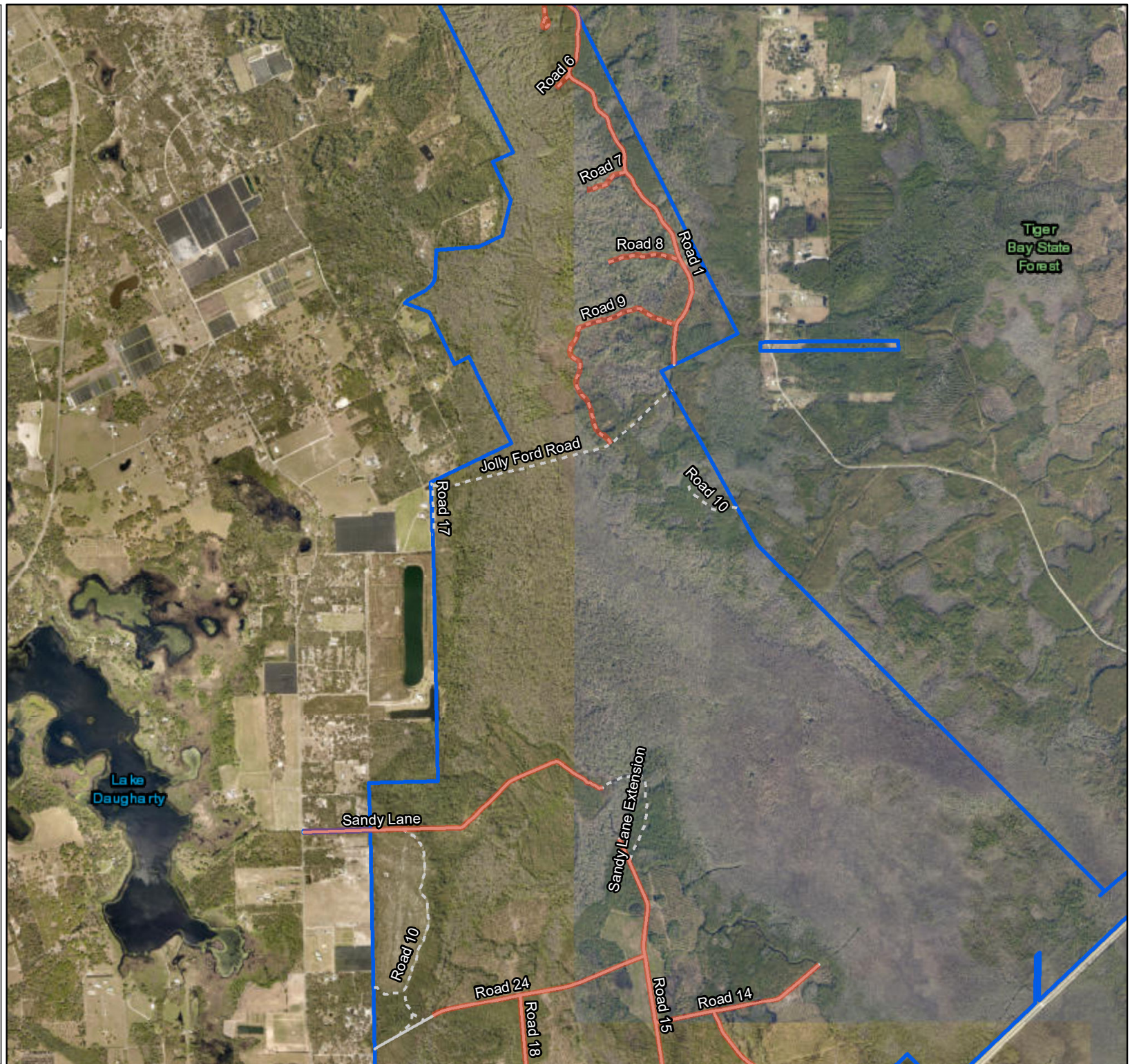
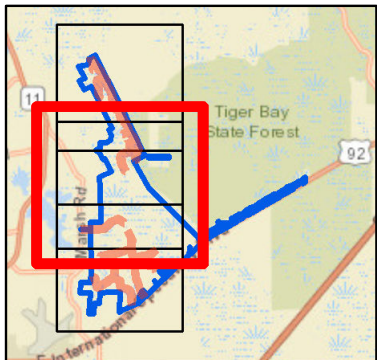


Legend

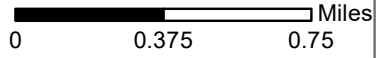
- Large Machine Mowing
- Primary Road
- Secondary Road Management
- Area Boundary

Map Page 2

Map Location



Clark Bay Conservation Area
Large Machine Mowing
September 2019

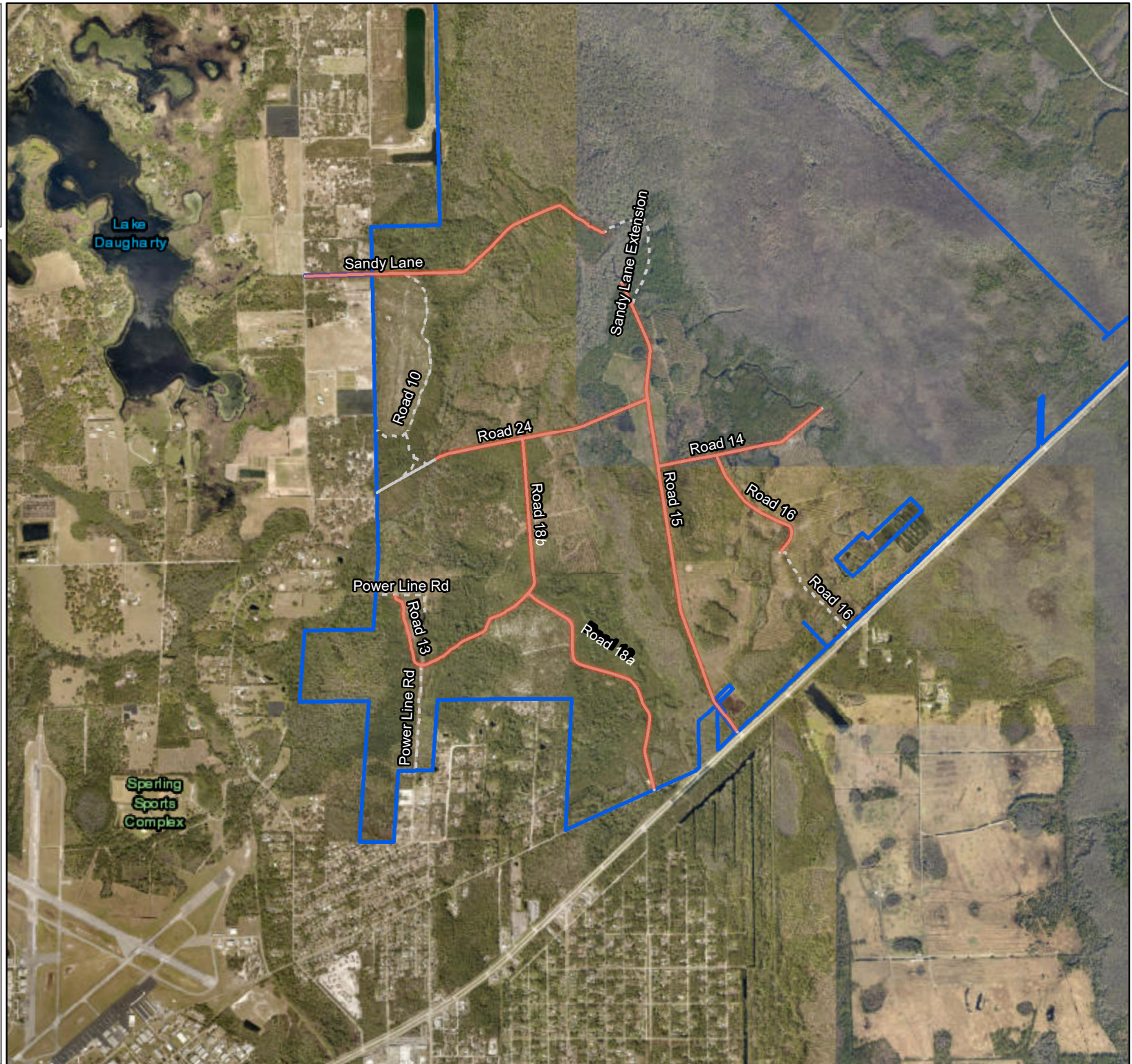


1:30,810



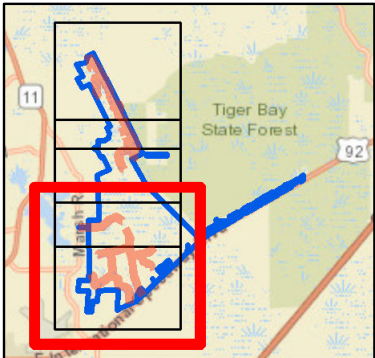
Legend

- Large Machine Mowing
- Primary Road
- Secondary Road Management
- Area Boundary



Map Page 3

Map Location

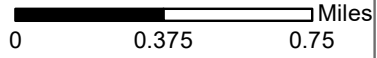


Crescent Lake Conservation Area

Large Machine Mowing

Road Name	Map Page	Mowing Type	Frequency	Width Range (feet)	Average Width (feet)	Road Lenth (miles)	Acres (Calculated)
Road 1	1	Standard	Modified Monthly	11 - 20	15	0.58	1.10
Road 2	1	Standard	Modified Monthly	11 - 20	15	0.83	1.50
Road 3	1	Standard	Modified Monthly	11 - 20	15	0.31	0.60
Road 4	1	Standard	Modified Monthly	11 - 20	15	0.86	1.60
Road 5	1	Standard	Modified Monthly	11 - 20	15	0.32	0.60
Road 6	1	Standard	Modified Monthly	11 - 20	15	1.00	1.80
Total Modified Monthly:							7.20
Total Semi-Annual:							0.00
Total Standard Mowing Acres:							7.20

Crescent Lake
Conservation Area
Large Machine Mowing
September 2019



1:30,770

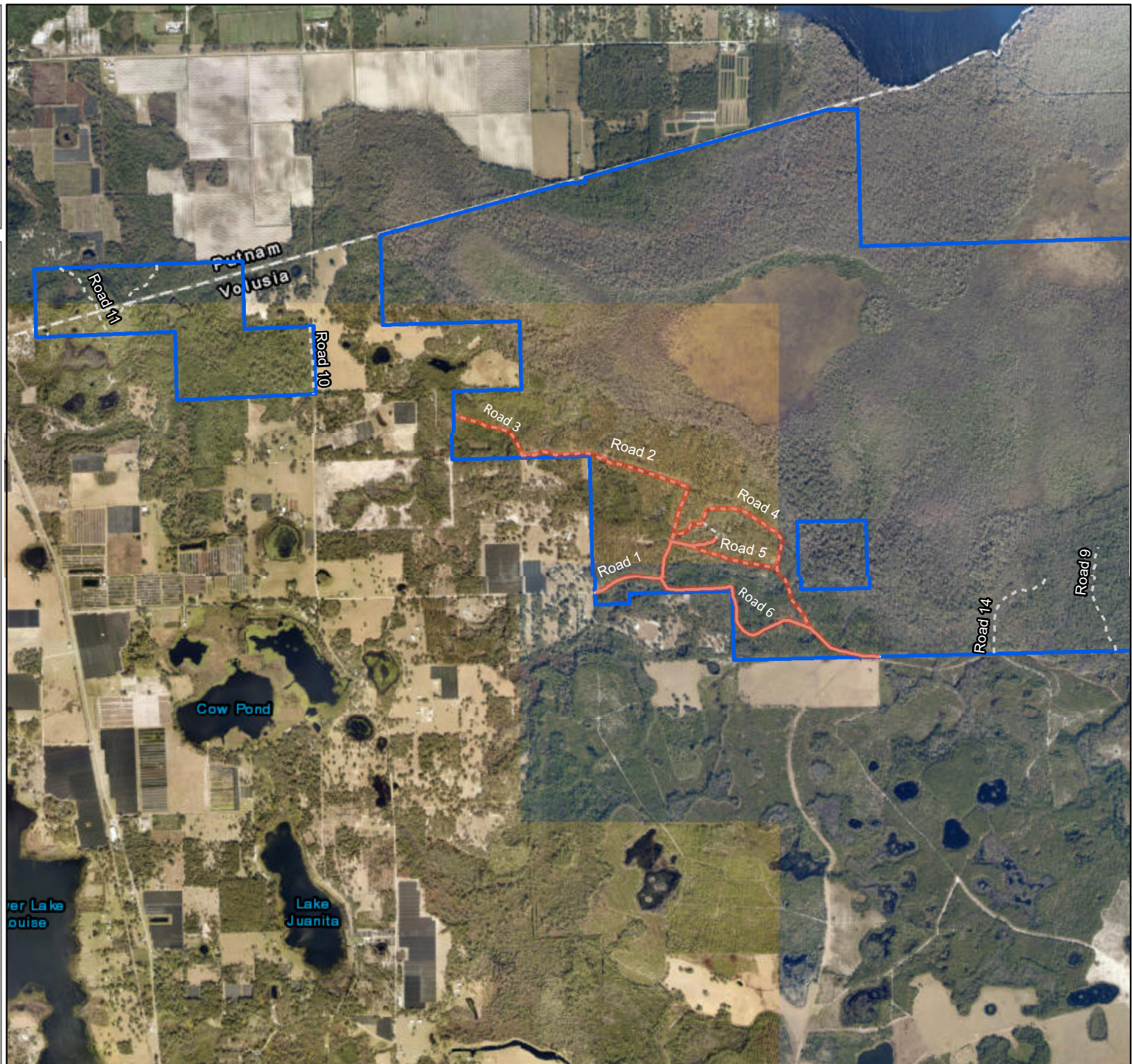
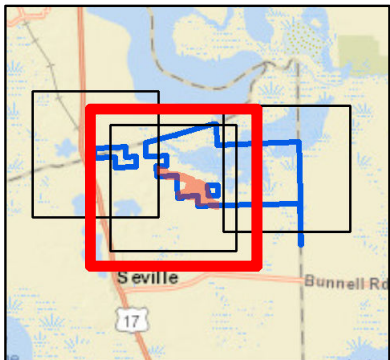


Legend

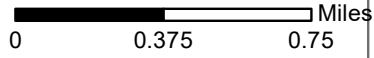
- Large Machine Mowing
- Primary Road
- Secondary Road
- Management Area Boundary

Map Page 1

Map Location







**Emeralda Marsh
Conservation Area
Large Machine Mowing
September 2019**



1:30,810

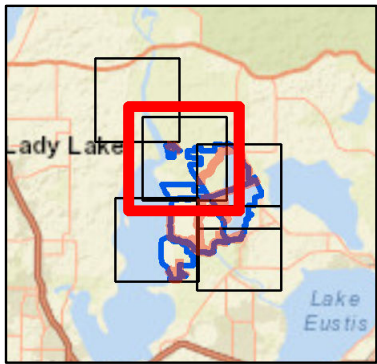


Legend

-  Large Machine Mowing
-  Primary Road
-  Secondary Road
-  Management Area Boundary

Map Page 1

Map Location



Emeralda Marsh
Conservation Area
Large Machine Mowing
September 2019

0 0.375 0.75 Miles



1:30,810

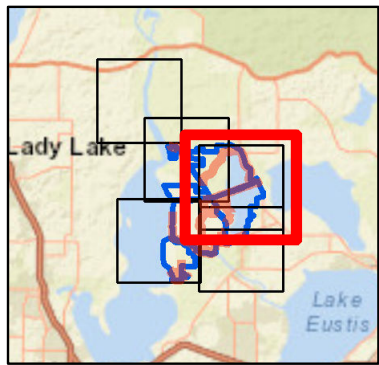
Legend

- Large Machine Mowing
- Primary Road
- Secondary Road
- Management Area Boundary



Map Page 2

Map Location



Emerelda Marsh
Conservation Area
Large Machine Mowing
September 2019

0 0.375 0.75 Miles



1:30,810

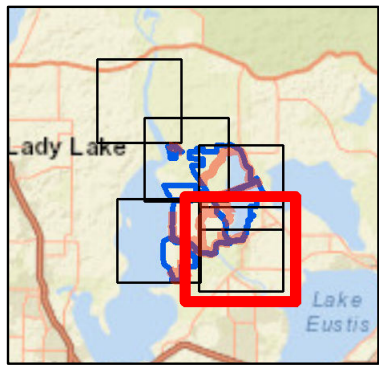
Legend

- Large Machine Mowing
- Primary Road
- - - Secondary Road
- ▭ Management Area Boundary

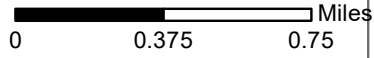


Map Page 3

Map Location



Emerelda Marsh
Conservation Area
Large Machine Mowing
September 2019



1:30,810

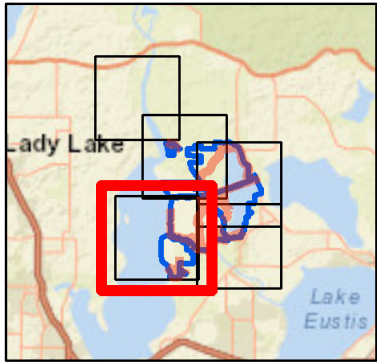


Legend

- Large Machine Mowing
- Primary Road
- Secondary Road
- Management Area Boundary

Map Page 4

Map Location

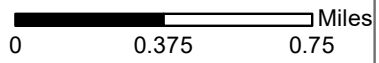


Heart Island Conservation Area

Large Machine Mowing

Road Name	Map Page	Mowing Type	Frequency	Width Range (feet)	Average Width (feet)	Road Length (miles)	Acres (Calculated)
Anderson Island Road	1	Standard	Modified Monthly	21 - 30	15	0.96	2.90
Banard Road	3	Standard	Modified Monthly	21 - 30	25	1.21	3.70
Bee Road	5 & 6	Standard	Modified Monthly	21 - 30	25	0.67	2.00
Bones Road	3	Standard	Modified Monthly	21 - 30	25	0.89	2.70
Bones Road North	3	Standard	Modified Monthly	21 - 30	25	0.13	0.40
Bullpen Road	1	Standard	Modified Monthly	21 - 30	25	1.49	4.50
Chessor Road	4	Standard	Modified Monthly	11 - 20	15	0.71	1.30
Chimney Road	1	Standard	Modified Monthly	21 - 30	25	2.34	7.10
Deep Creek Road	5	Standard	Modified Monthly	21 - 30	25	4.54	13.80
Buckles Road Extension	6	Standard	Modified Monthly	5 - 10	10	0.73	0.90
Flagler Road	1 & 2	Standard	Modified Monthly	11 - 20	15	0.69	1.30
Flat Road	1	Standard	Modified Monthly	21 - 30	25	3.25	9.90
Herre Road	3	Standard	Modified Monthly	11 - 20	15	0.32	0.60
Island Road	2	Standard	Modified Monthly	21 - 30	25	2.19	6.70
Redbeard Road	5	Standard	Modified Monthly	11 - 20	15	0.65	1.20
Strawn Road	5	Standard	Modified Monthly	21 - 30	30	0.73	2.60
Tram Road	5	Standard	Modified Monthly	21 - 30	30	0.68	2.50
Trot Road	1	Standard	Modified Monthly	11 - 20	15	0.64	1.20
Truck Trail 11	1	Standard	Modified Monthly	21 - 30	25	1.10	3.30
Truck Trail 12	1	Standard	Modified Monthly	21 - 30	25	2.24	6.80
Grove Road	5	Standard	Modified Monthly	11 - 20	15	0.39	0.70
Rail Tram Rd	5	Standard	Modified Monthly	11 - 20	15	0.51	0.90
Center Road	5	Standard	Modified Monthly	21 - 30	25	0.98	3.00
Road 1	4	Standard	Modified Monthly	11 - 20	15	1.10	2.00
Wells Road	6	Standard	Modified Monthly	21 - 30	25	0.37	1.10
West Road	6	Standard	Modified Monthly	21 - 30	15	1.12	1.90
Total Modified Monthly:							85.00
Total Semi-Annual:							0.00
Total Standard Mowing Acres:							85.00





Heart Island
Conservation Area
Large Machine Mowing
September 2019



1:30,770

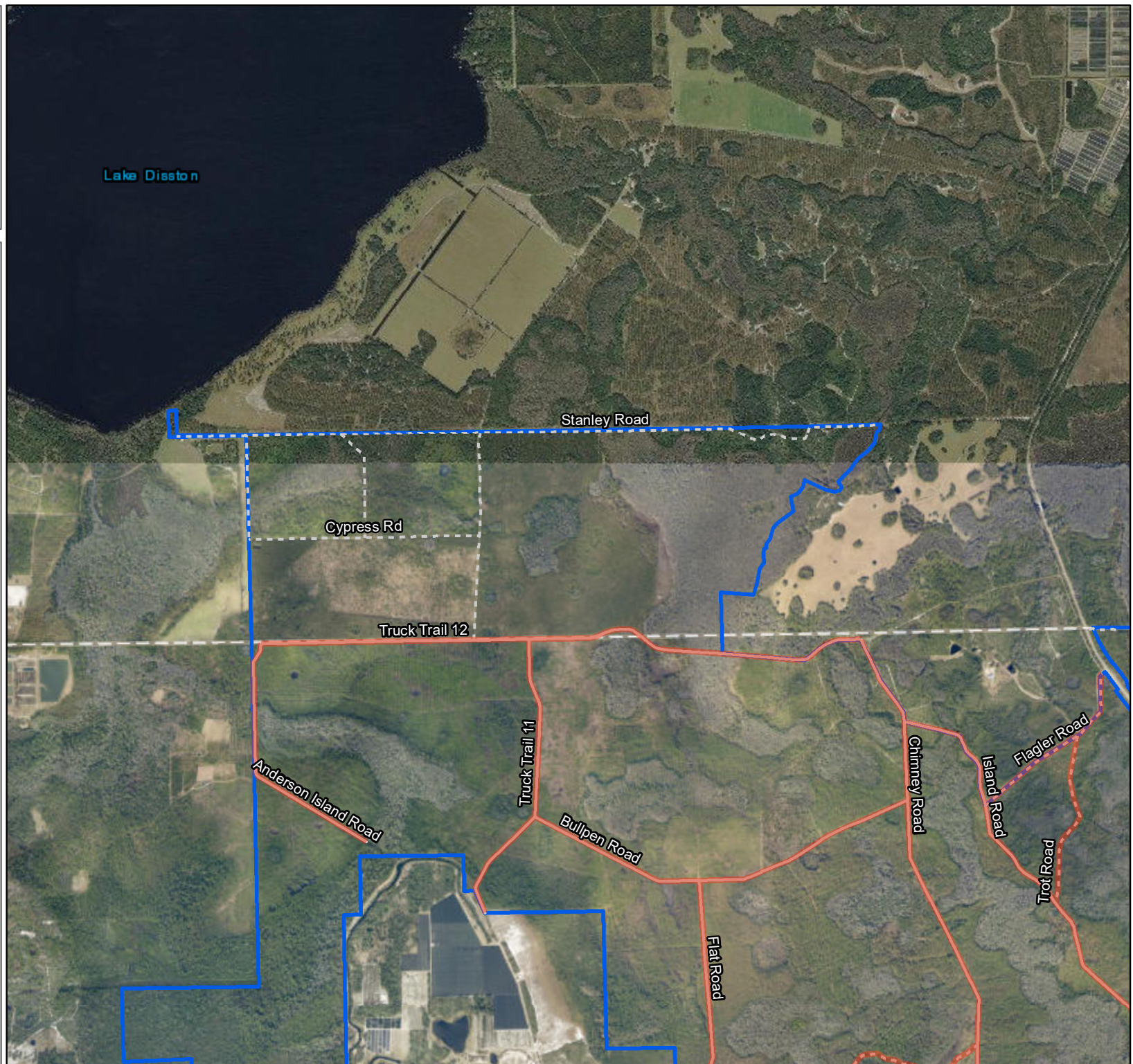
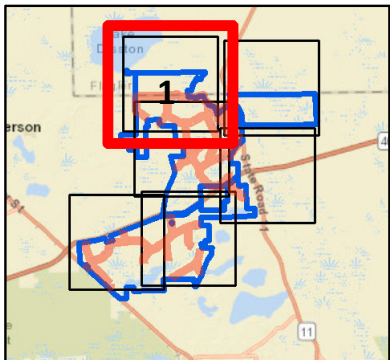


Legend

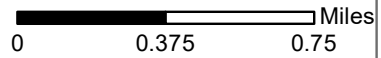
-  Large Machine Mowing
-  Primary Road
-  Secondary Road
-  Management Area Boundary

Map Page
1 of 6

Map Location



Heart Island
Conservation Area
Large Machine Mowing
September 2019



1:30,770

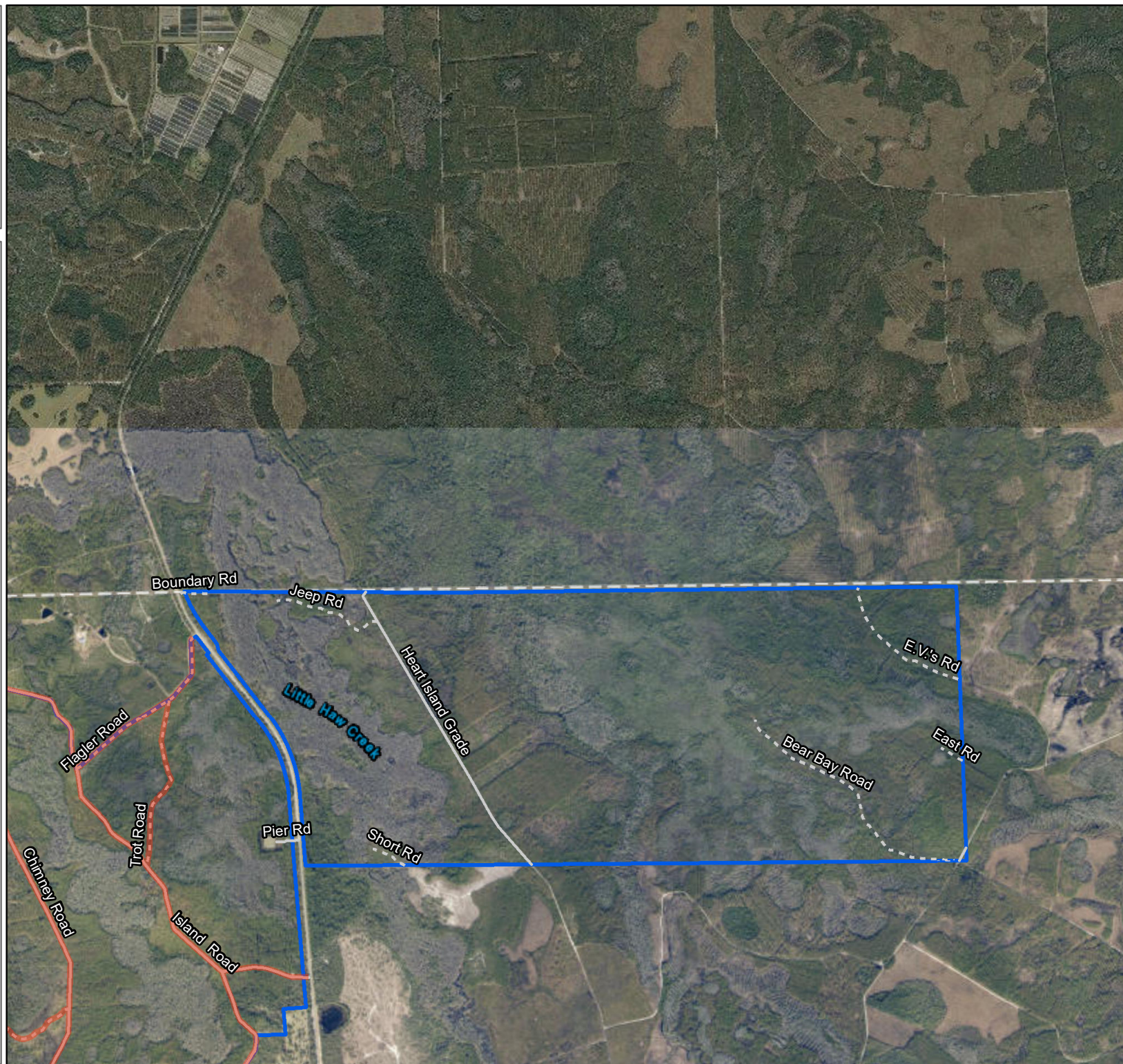
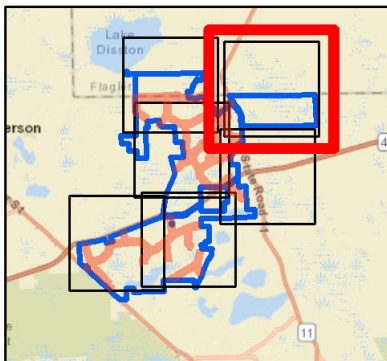


Legend

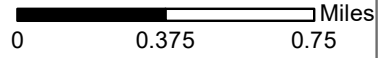
- Large Machine Mowing
- Primary Road
- Secondary Road
- Management Area Boundary

Map Page 2

Map Location



Heart Island
Conservation Area
Large Machine Mowing
September 2019



1:30,770

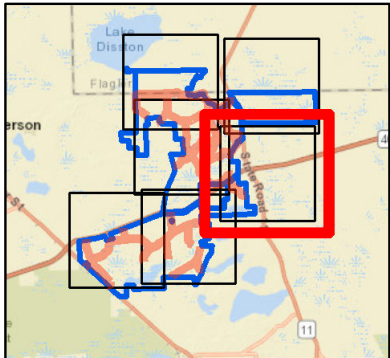


Legend

- Large Machine Mowing
- Primary Road
- Secondary Road
- Management Area Boundary

Map Page 3

Map Location







Heart Island
Conservation Area
Large Machine Mowing
September 2019

0 0.375 0.75 Miles



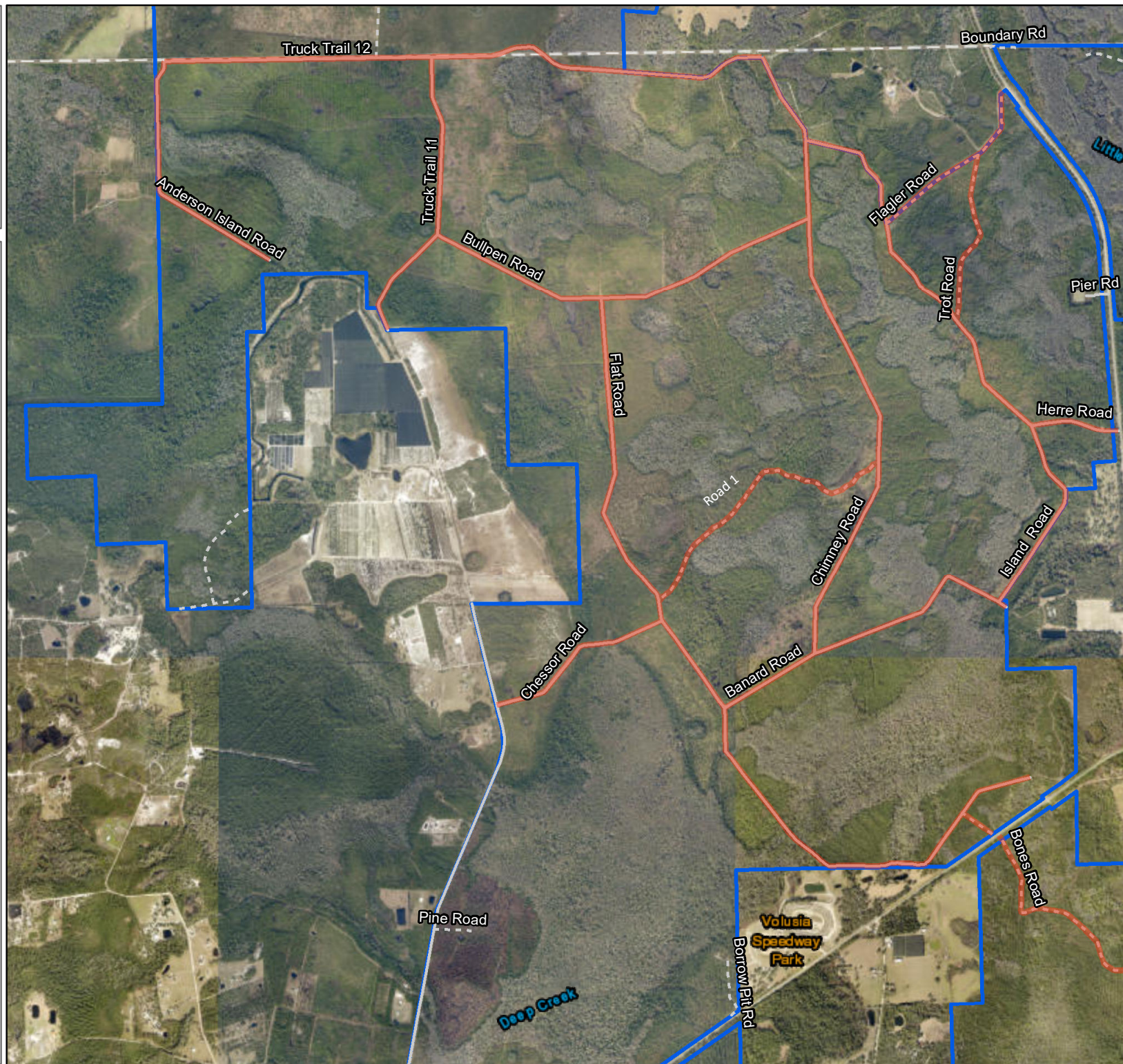
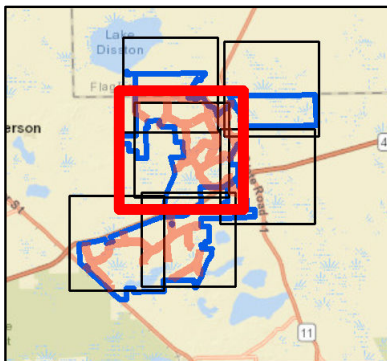
1:30,770

Legend

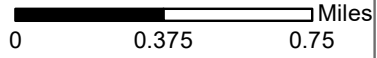
-  Large Machine Mowing
-  Primary Road
-  Secondary Road
-  Management Area Boundary

Map Page 4

Map Location



Heart Island
Conservation Area
Large Machine Mowing
September 2019



1:30,770

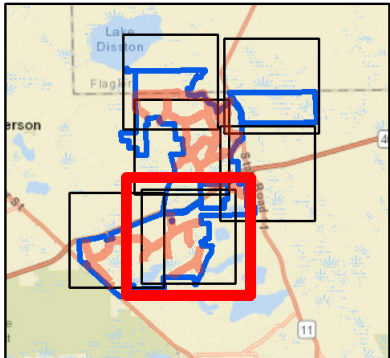


Legend

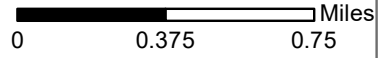
- Large Machine Mowing
- Primary Road
- Secondary Road
- Management Area Boundary

Map Page 5

Map Location



Heart Island
Conservation Area
Large Machine Mowing
September 2019



1:30,770

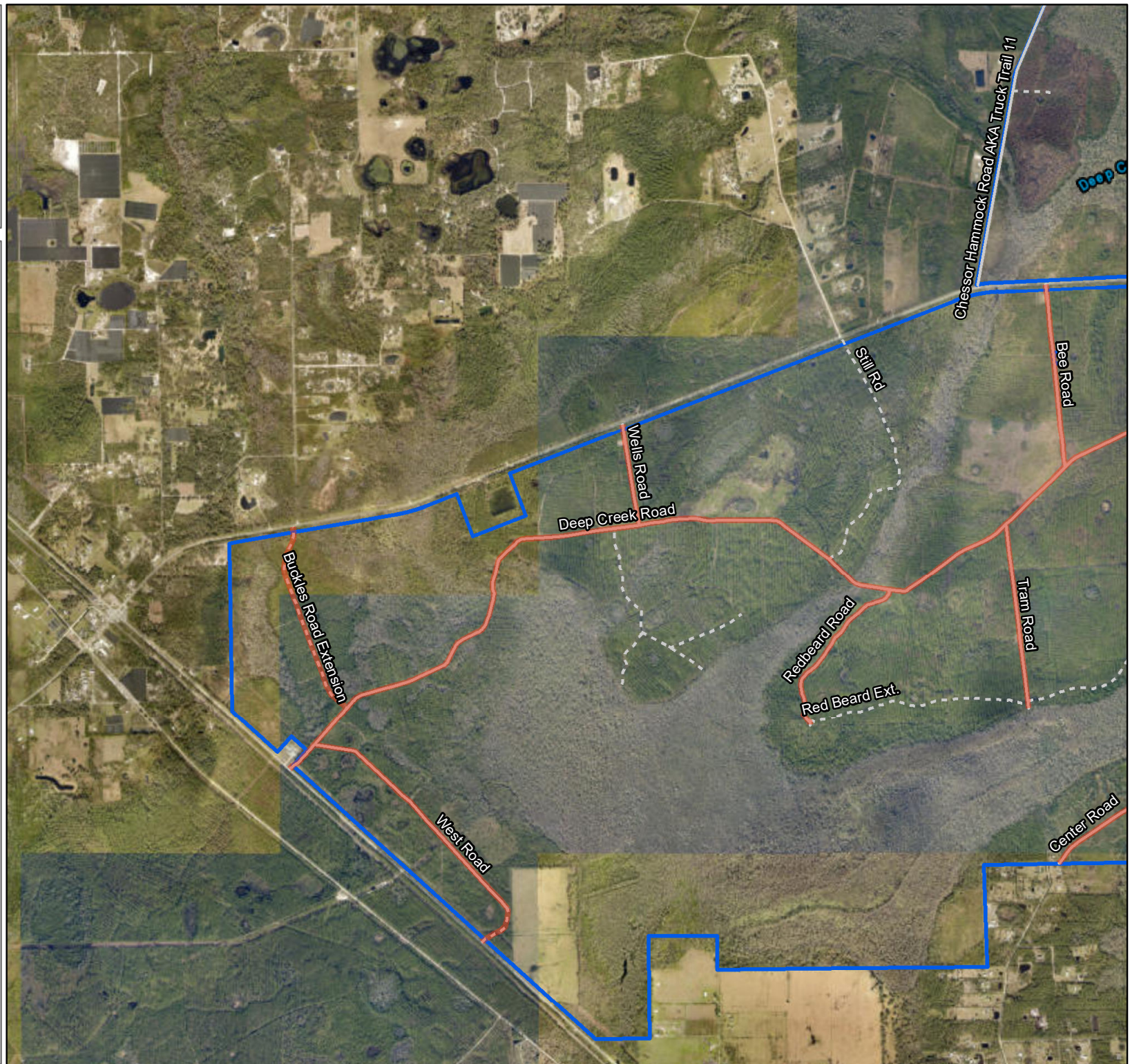
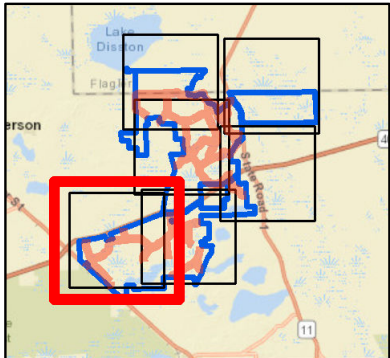


Legend

- Large Machine Mowing
- Primary Road
- Secondary Road
- Management Area Boundary

Map Page 6

Map Location



Lake George Conservation Area

Large Machine Mowing

Road Name	Map Page	Mowing Type	Frequency	Width Range (feet)	Average Width (feet)	Road Lenth (miles)	Acres (Calculated)
Aces Road	3 & 4	Standard	Modified Monthly	21 - 30	25	1.68	5.10
Barr's Road	3, 4 & 5	Standard	Modified Monthly	21 - 30	25	1.76	5.30
Combie Road	3	Standard	Modified Monthly	21 - 30	25	1.40	4.20
Denver Road 1	3	Standard	Modified Monthly	21 - 30	10	0.38	1.20
Denver Road 2	3	Standard	Modified Monthly	21 - 30	25	0.78	2.40
Dog Leg Road	1	Standard	Modified Monthly	11 - 20	25	1.12	2.00
Fill Road	1	Standard	Modified Monthly	11 - 20	15	2.08	3.80
Joe Pittman Road	5	Standard	Modified Monthly	21 - 30	25	0.25	0.80
Jumping Gully Extension	3	Standard	Modified Monthly	21 - 30	30	0.69	2.50
Jumping Gully Road	4	Standard	Modified Monthly	21 - 30	25	1.55	4.70
Loop Road North	1	Standard	Modified Monthly	11 - 20	15	1.23	2.20
Loop Road South	3	Standard	Modified Monthly	21 - 30	15	0.77	2.50
Lyons Mills Road	1, 2	Standard	Modified Monthly	21 - 30	25	0.95	2.90
Middle Road	3 & 4	Standard	Modified Monthly	21 - 30	25	1.70	5.20
Mike Brooks Road	5	Standard	Modified Monthly	31 - 40	35	1.22	5.20
Mills Road	3	Standard	Modified Monthly	21 - 30	25	0.91	2.80
Otter Road	3	Standard	Modified Monthly	21 - 30	25	1.43	4.30
Patty Wiggins Road	5	Standard	Modified Monthly	11 - 20	15	0.93	1.70
Pine Island Road	5	Standard	Modified Monthly	11 - 20	15	0.35	0.60
Sand Hill Road	1 & 4	Standard	Modified Monthly	21 - 30	25	1.09	3.30
Scrub Road	1, 2 & 3	Standard	Modified Monthly	11 - 20	15	1.04	1.90
Shooting Range Road	4	Standard	Modified Monthly	11 - 20	15	0.38	0.70
Silver Pond Road	3	Standard	Modified Monthly	21 - 30	25	3.10	9.40
Spur No. 1	3 & 4	Standard	Modified Monthly	21 - 30	25	0.43	1.30
Spur No. 2	3 & 4	Standard	Modified Monthly	11 - 20	15	0.34	0.60
Troy Road	4	Standard	Modified Monthly	21 - 30	25	1.00	3.10
Truck Trail No. 1	3	Standard	Modified Monthly	21 - 30	25	1.79	5.40
Fernery Road	5	Standard	Modified Monthly	11 - 20	15	0.85	1.60
Sand Pit Rd	3 & 5	Standard	Modified Monthly	5 - 10	10	0.59	0.70
Road 3	3	Standard	Modified Monthly	21 - 30	25	0.23	0.70
Truck Trail 1	3	Standard	Modified Monthly	11 - 20	15	0.09	0.20
Total Modified Monthly:							88.30
Total Semi-Annual:							0.00
Total Standard Mowing Acres:							88.30






Lake George
Conservation Area Large
Machine Mowing
September 2019

0 0.375 0.75 Miles



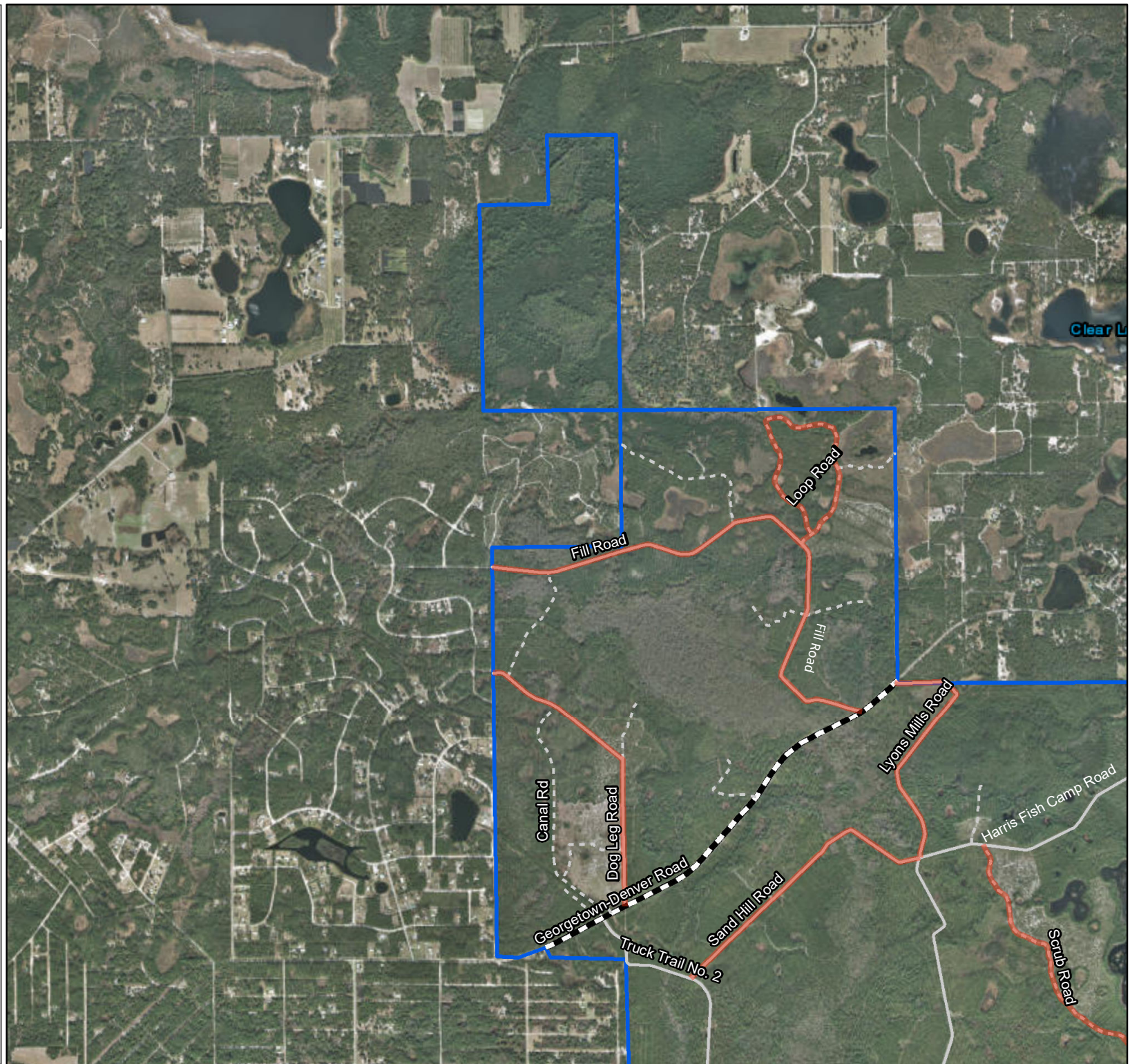
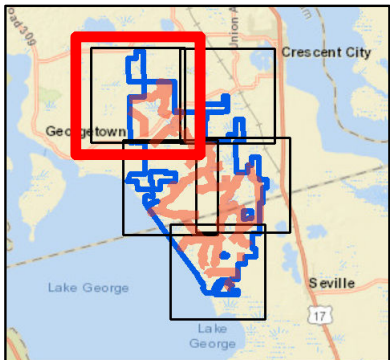
1:30,770

Legend

-  Large Machine Mowing
-  Paved Road
-  Primary Road
-  Secondary Road
-  Management Area Boundary

Map Page 1

Map Location








Lake George
Conservation Area Large
Machine Mowing
September 2019

0 0.375 0.75 Miles



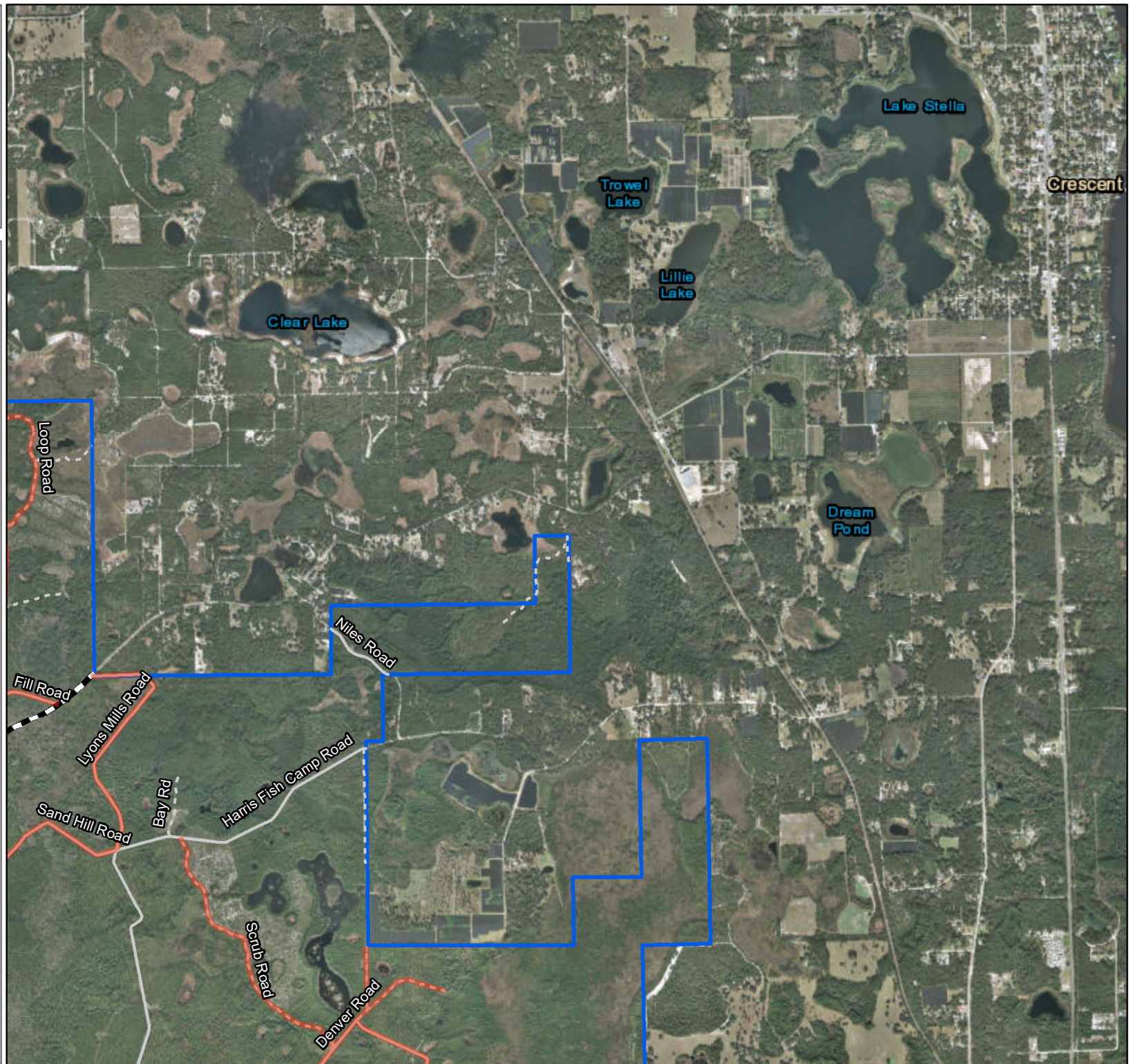
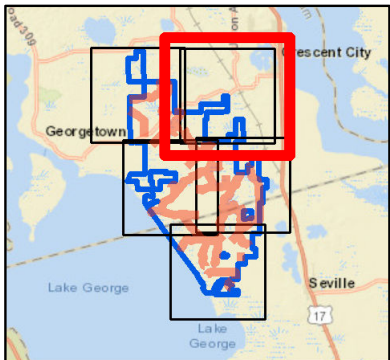
1:30,770

Legend

-  Large Machine Mowing
-  Paved Road
-  Primary Road
-  Secondary Road
-  Management Area Boundary

Map Page 2

Map Location



Lake George
Conservation Area Large
Machine Mowing
September 2019

0 0.375 0.75 Miles



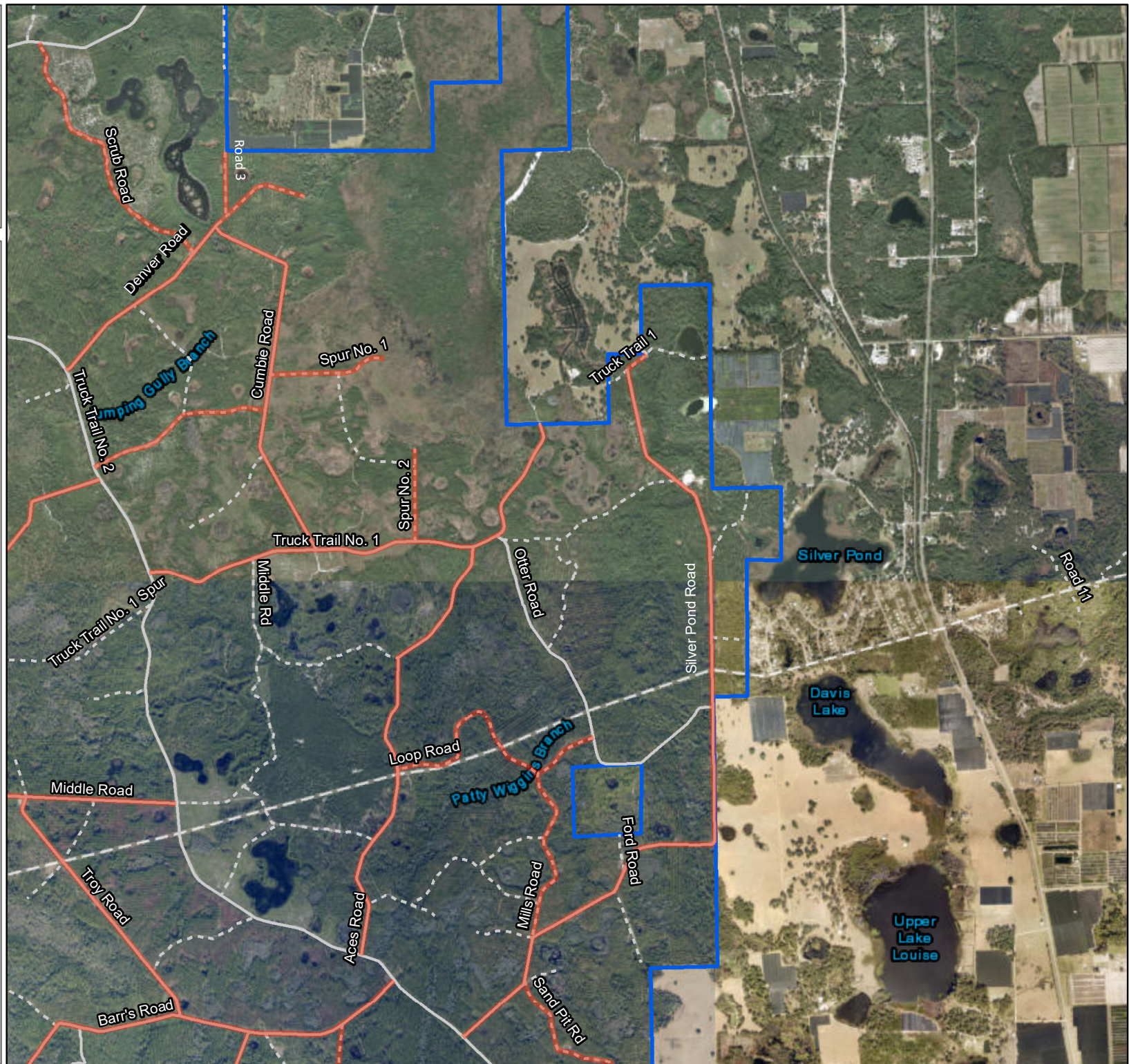
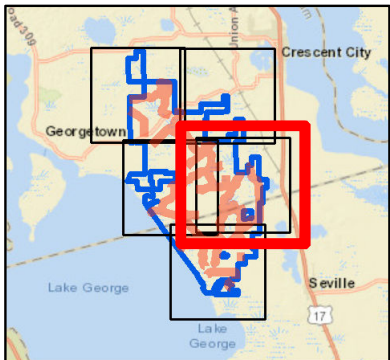
1:30,770

Legend

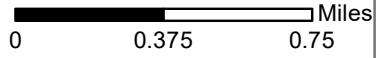
- Large Machine Mowing
- Primary Road
- Secondary Road
- Management Area Boundary

Map Page 3

Map Location



Lake George Conservation Area Large Machine Mowing September 2019



1:30,770

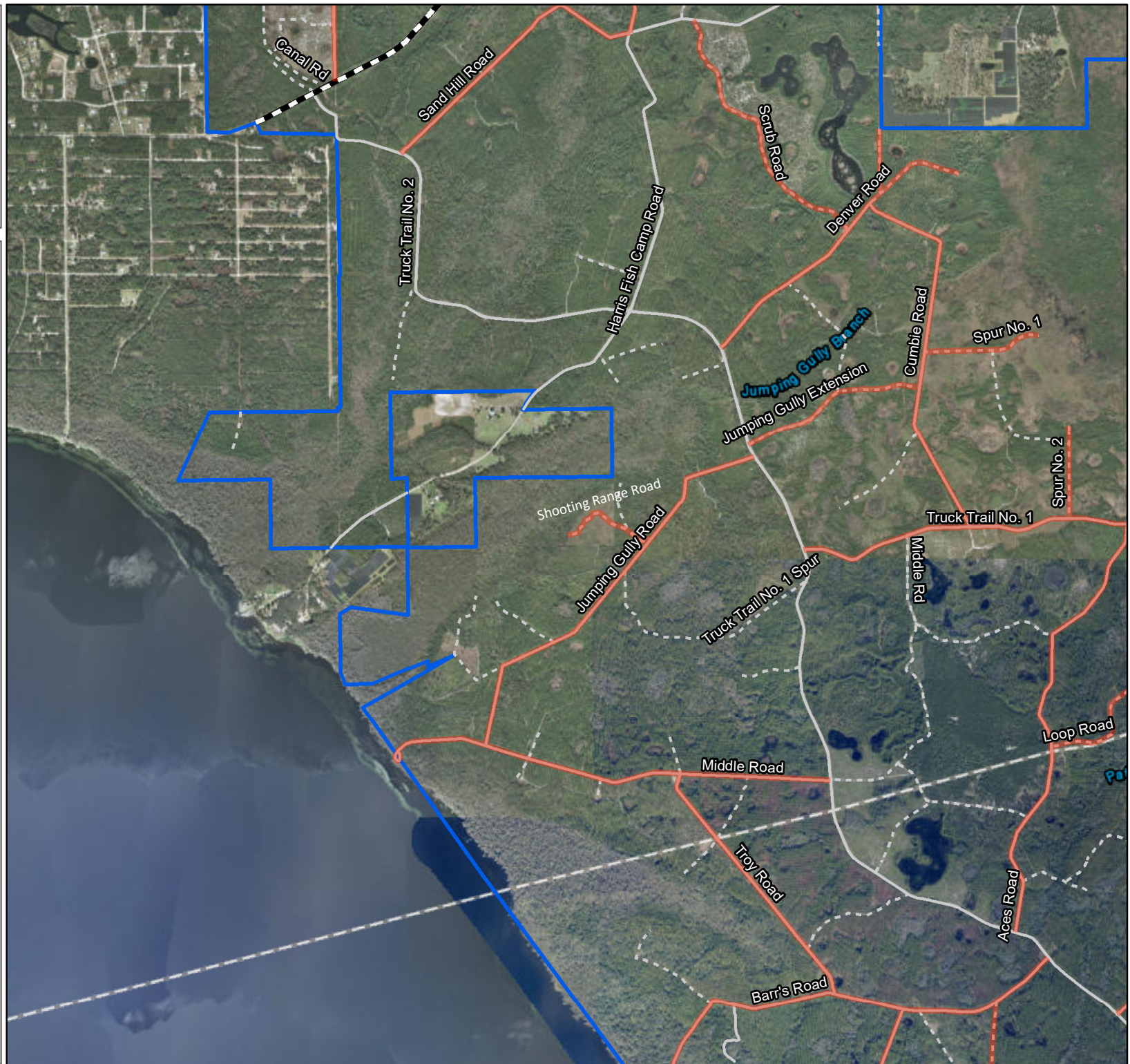
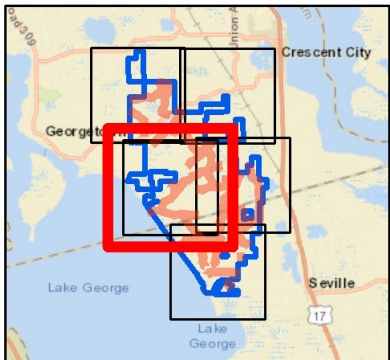


Legend

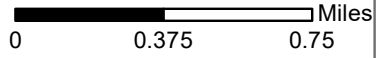
- Large Machine Mowing
- Paved Road
- Primary Road
- Secondary Road
- Management Area Boundary

Map Page 4

Map Location



Lake George Conservation Area Large Machine Mowing September 2019



1:30,770

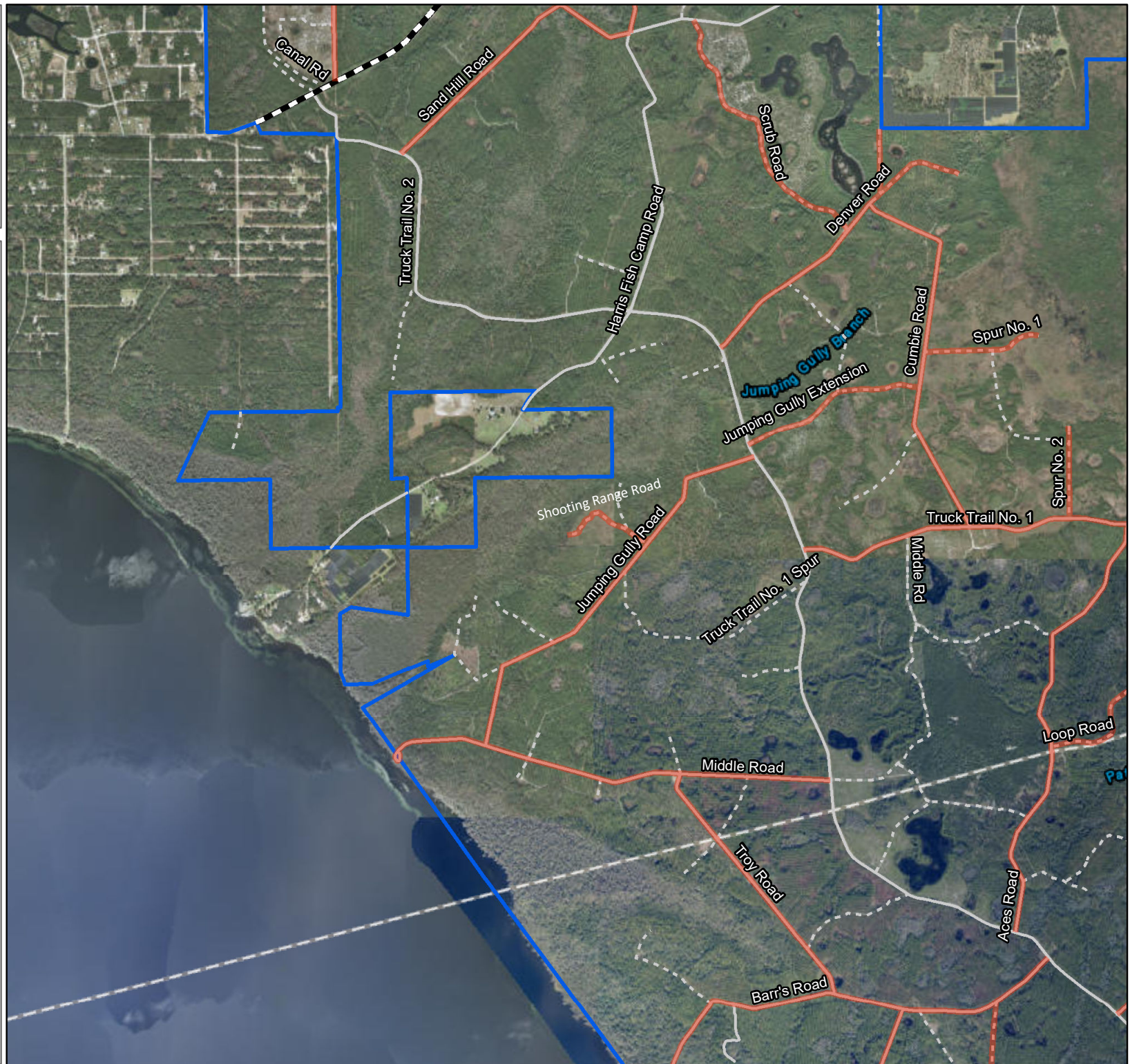
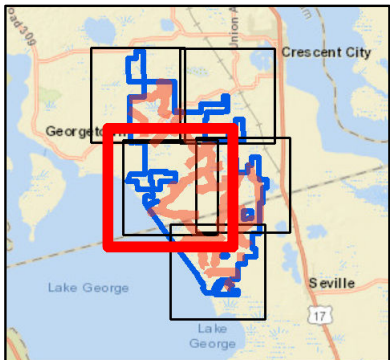


Legend

- Large Machine Mowing
- Paved Road
- Primary Road
- Secondary Road
- Management Area Boundary

Map Page 4

Map Location

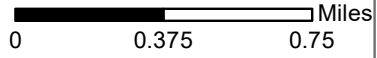


Lake Norris Conservation Area

Large Machine Mowing

Levee/Roads	Map Page	Mowing Type	Frequency	Width Range (feet)	Average Width (feet)	Length (miles)	Acres (Calculated)
Blackwater Creek Rd 1	1	Standard	Modified Monthly	21 - 30	25	1.25	3.80
Blackwater Creek Rd 2	1	Standard	Modified Monthly	21 - 30	25	1.05	3.20
Blackwater Creek Rd 3	1	Standard	Modified Monthly	21 - 30	25	1.10	3.30
Blackwater Creek Rd 4	1	Standard	Modified Monthly	11 - 20	15	1.12	2.00
Canoe Launch Tram	1	Standard	Modified Monthly	11 - 20	15	0.15	0.30
Eustis Sand Mine Rd 1	1	Standard	Modified Monthly	21 - 30	30	2.20	8.10
Eustis Sand Mine Rd 2	1	Standard	Modified Monthly	21 - 30	25	0.52	1.60
Wiggins Rd	1	Standard	Modified Monthly	21 - 30	25	0.42	1.30
Total Modified Monthly:							23.60
Total Semi-Annual:							0.00
Total Standard Mowing Acres:							23.60

Lake Norris
Conservation Area
Large Machine Mowing
September 2019



1:30,770

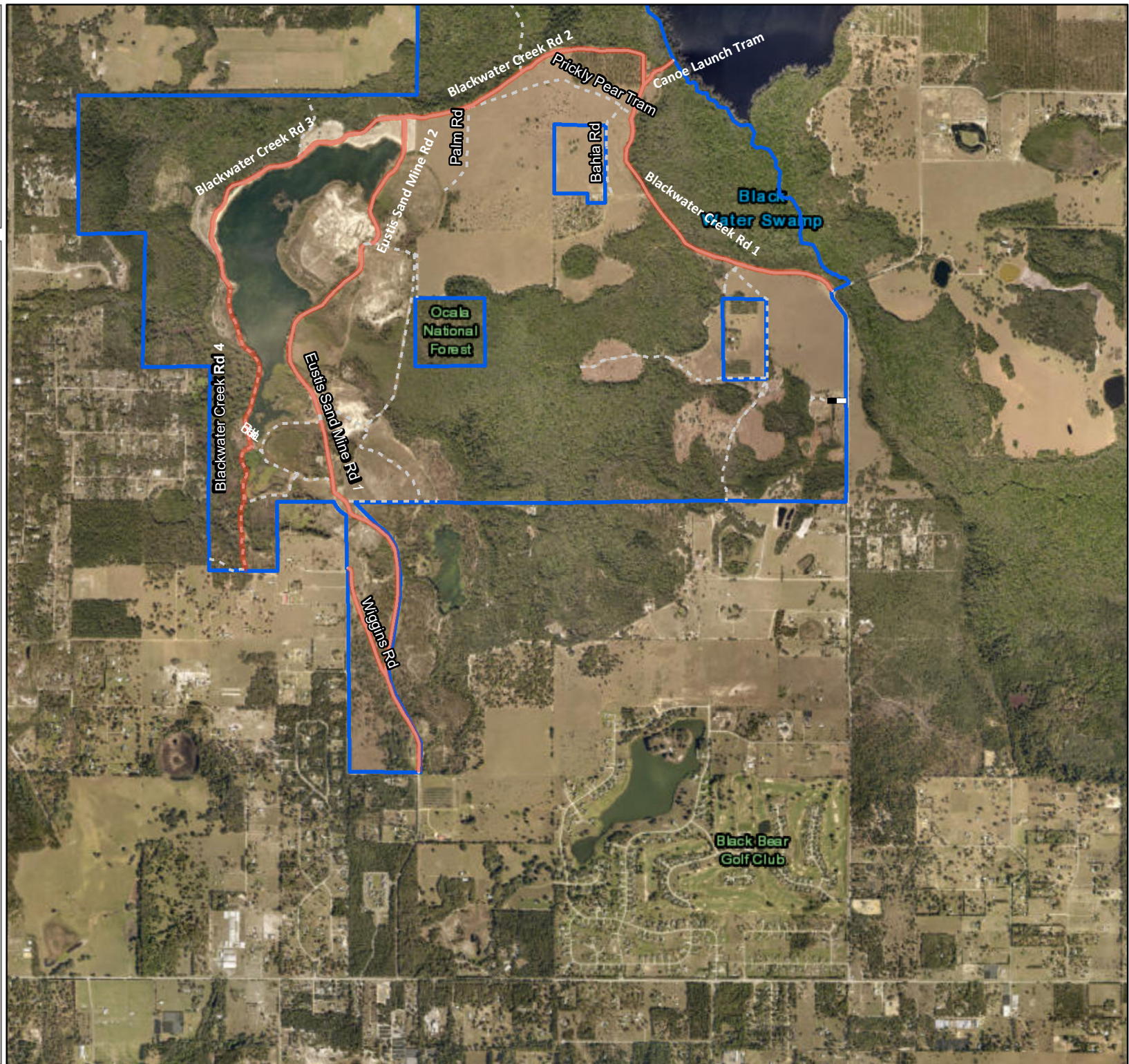
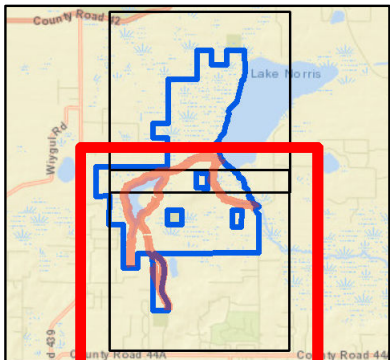


Legend

- Large Machine Mowing
- Paved Road
- Primary Road
- Secondary Road
- Management Area Boundary

Map Page 1

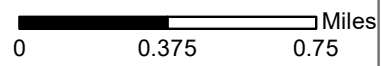
Map Location



**Ocklawaha Prairie Restoration Area
Large Machine Mowing**

Levee/Roads	Map Page	Mowing Type	Frequency	Width Range (feet)	Average Width (feet)	Length (miles)	Acres (Calculated)
Magnolia Rd	2	Standard	Modified Semi-Monthly	11 - 20	15	0.24	0.40
Clay Pit Rd	2	Standard	Modified Semi-Monthly	11 - 20	15	0.39	0.70
Wiregrass Rd	2	Standard	Modified Semi-Monthly	11 - 20	15	0.18	0.30
Grassy Pond Rd	2	Standard	Modified Semi-Monthly	21 - 30	25	0.41	1.30
Doe Rd	1	Standard	Modified Semi-Monthly	21 - 30	25	1.01	3.10
Camp Rd	1	Standard	Modified Semi-Monthly	11 - 20	15	0.24	0.40
Cut Through Rd	2	Standard	Modified Semi-Monthly	11 - 20	15	0.29	0.50
Bay Rd	1	Standard	Modified Semi-Monthly	11 - 20	15	0.53	1.00
Pine Island Rd	1	Standard	Modified Semi-Monthly	11 - 20	25	1.17	1.50
Wood Duck Rd 1	1	Standard	Modified Semi-Monthly	31 - 40	35	1.84	7.80
Wood Duck Rd 2	2	Standard	Modified Semi-Monthly	31 - 40	35	3.80	16.10
Old Celery Farm Rd	2	Standard	Modified Semi-Monthly	31 - 40	30	0.65	2.80
Chornobyl Rd	3	Standard	Modified Semi-Monthly	21 - 30	25	1.54	4.70
Tiger Den Rd	3	Standard	Modified Semi-Monthly	21 - 30	25	1.67	3.00
Spur Rd	3	Standard	Modified Semi-Monthly	21 - 30	25	0.27	0.80
Melon Field Rd	3	Standard	Modified Semi-Monthly	21 - 30	25	0.41	1.20
Fox Rd	3	Standard	Modified Semi-Monthly	21 - 30	15	1.39	4.00
Pine Rd	3	Standard	Modified Semi-Monthly	21 - 30	15	0.20	0.60
Bear Poop Rd	3	Standard	Modified Semi-Monthly	11 - 20	15	0.19	0.30
L-212		Levee	Modified Semi-Monthly	80'-240'	150	5.50	120.00
Total Standard Modified Semi Monthly:							50.50
Total Levee Modified Semi Monthly Acres:							120.00

Ocklawaha Prairie
Restoration Area
Large Machine Mowing
September 2019



1:30,770

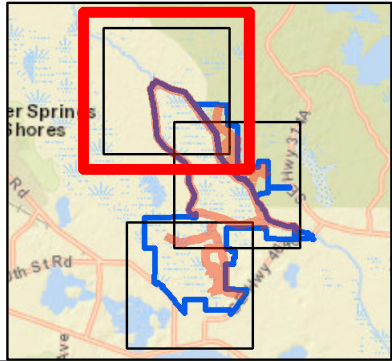


Legend

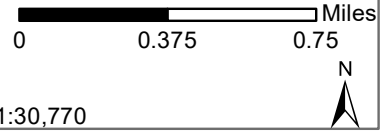
- Large Machine Mowing
- Primary Road
- Secondary Road
- Management Area Boundary

Map Page 1

Map Location



Ocklawaha Prairie
Restoration Area
Large Machine Mowing
September 2019

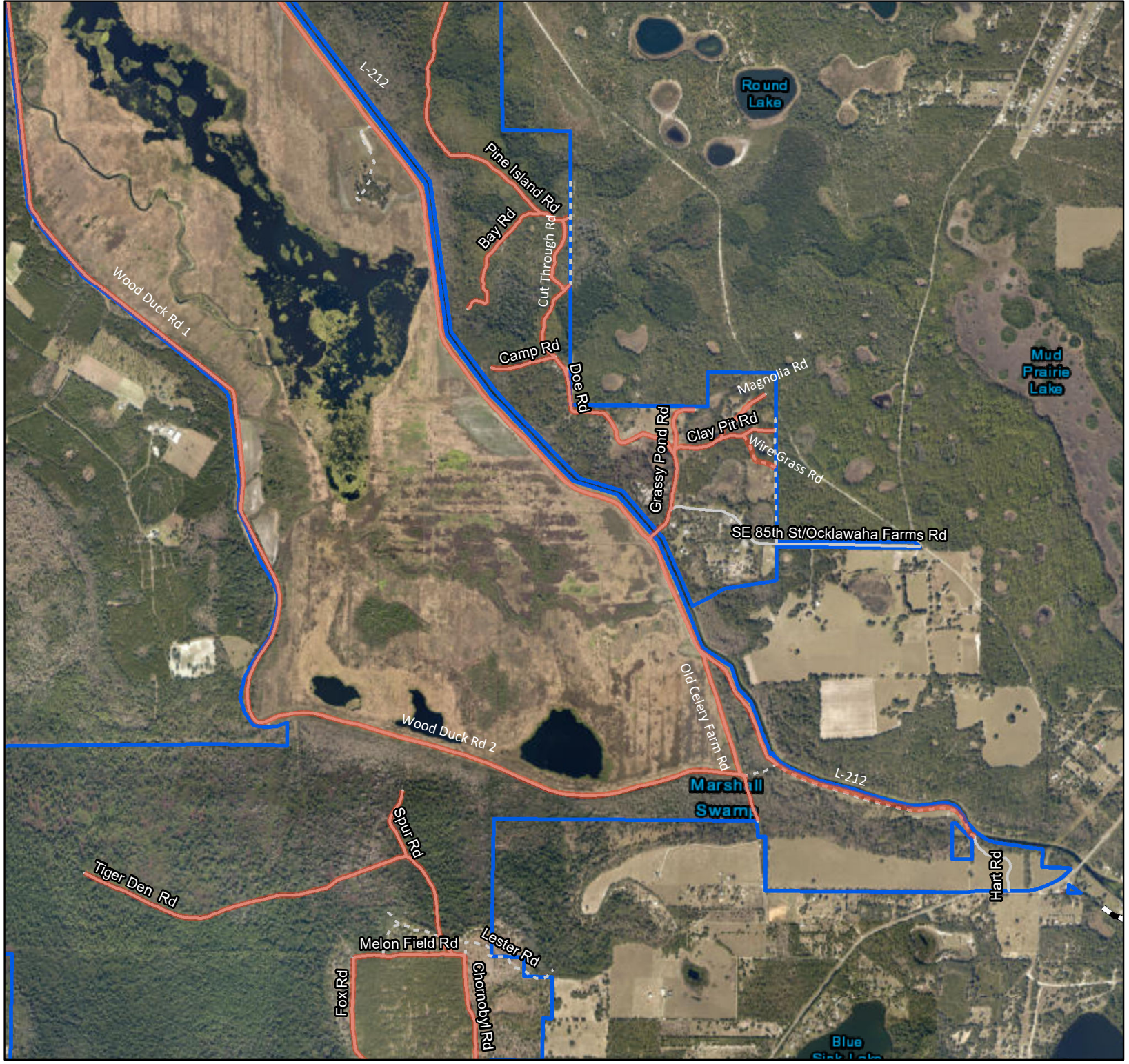
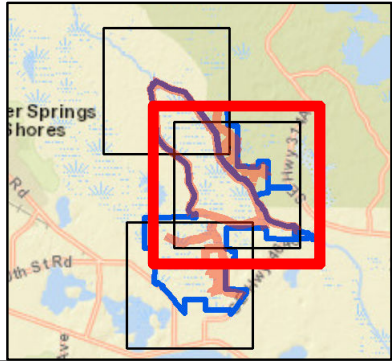


Legend

- Large Machine Mowing
- Paved Road
- Primary Road
- Secondary Road
- Management Area Boundary

Map Page 2

Map Location







Ocklawaha Prairie
Restoration Area
Large Machine Mowing
September 2019

0 0.375 0.75 Miles



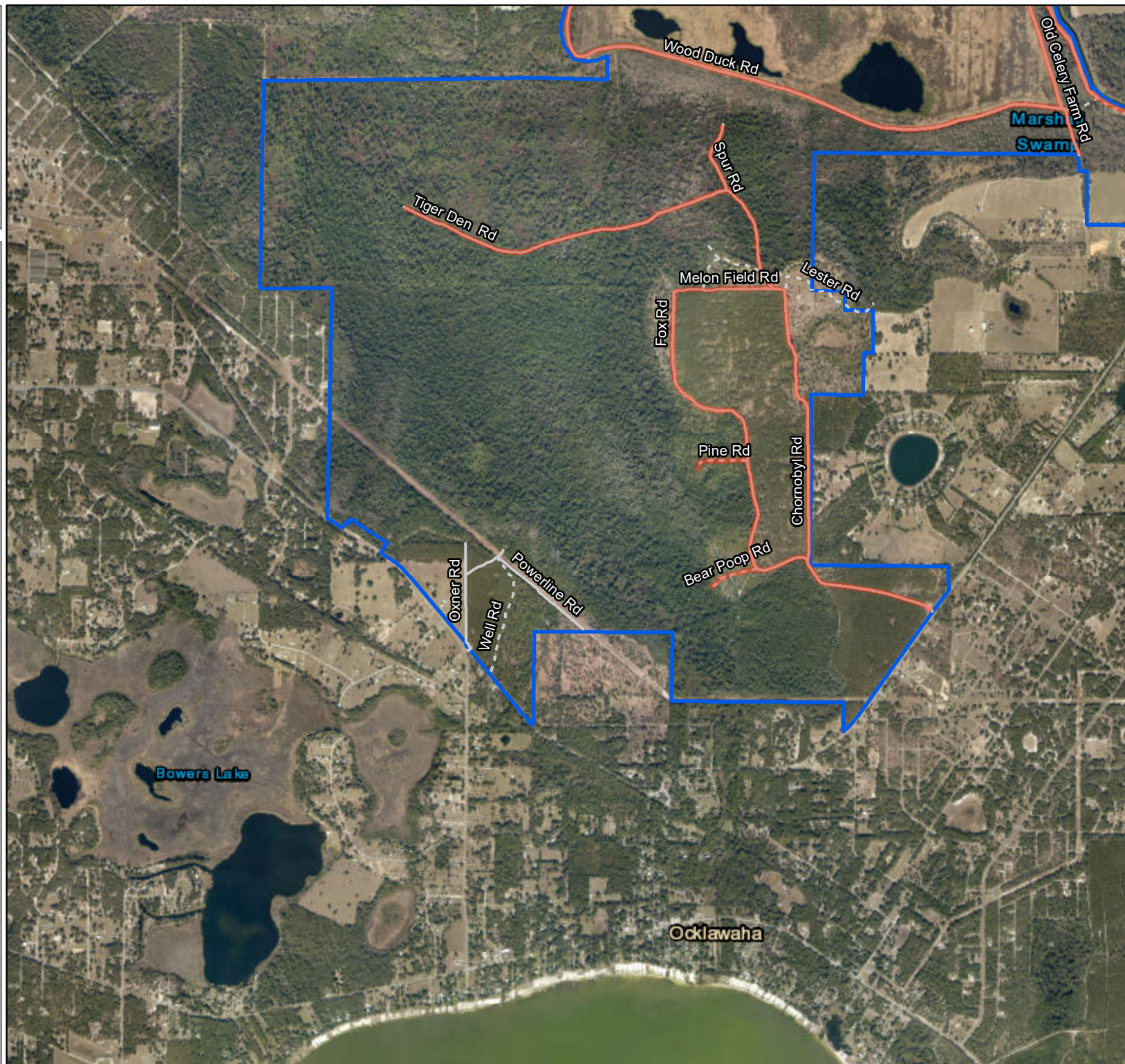
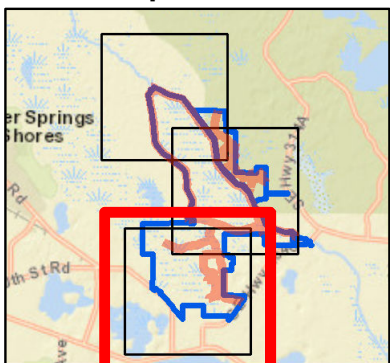
1:30,770

Legend

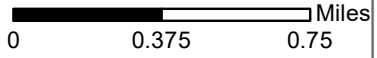
-  Large Machine Mowing
-  Primary Road
-  Secondary Road
-  Management Area Boundary

Map Page 3

Map Location



Sunnyhill Restoration Area
Large Machine Mowing
September 2019



1:30,770

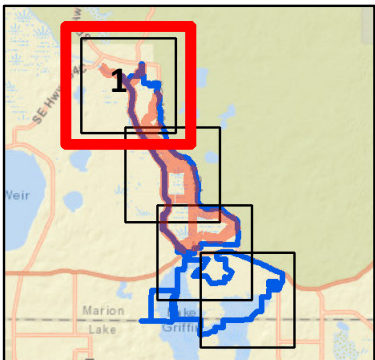


Legend

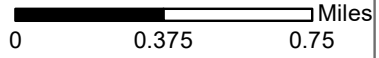
- Large Machine Mowing
- Paved Road
- Primary Road
- Secondary Road
- Management Area Boundary

Map Page
1 of 4

Map Location



Sunnyhill Restoration Area
Large Machine Mowing
September 2019



1:30,770

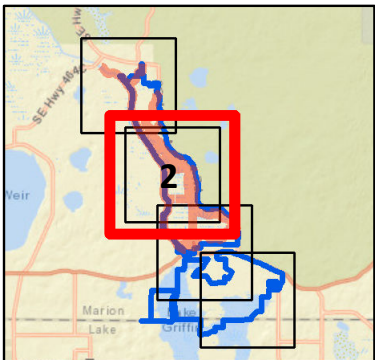


Legend

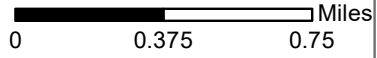
- Large Machine Mowing
- Primary Road
- Secondary Road
- Management Area Boundary

Map Page
2 of 4

Map Location



Sunnyhill Restoration Area
Large Machine Mowing
September 2019



1:30,770

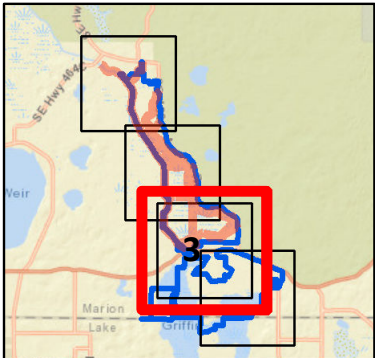


Legend

- Large Machine Mowing Areas
- Large Machine Mowing
- Primary Road
- Secondary Road Management
- Area Boundary

Map Page
3 of 4

Map Location



Sunnyhill Restoration Area
Large Machine Mowing
September 2019

0 0.375 0.75 Miles

1:30,770



Legend

-  Large Machine Mowing Areas
-  Large Machine Mowing
-  Primary Road
-  Secondary Road
-  Management Area Boundary

Map Page
4 of 4

Map Location

