

SW Region Large Machine-Levee_Mowing Location, Acreage and Frequency

Pages 1-11

Lake Apopka North Shore

Large Machine Mowing

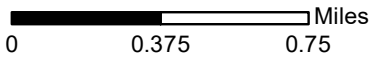
Levee/Roads	Map Page	Mowing Type	Section	Frequency	Width Range (feet)	Average Width (feet)	Length (miles)	Acres (Calculated)
Apopka Loop Trail (Hog Alley)	1	Standard	Apopka Flow-Way	Modified Semi-Monthly	41'-50'	45 feet	3.27	17.90
Apopka Loop Trail Extension	1	Standard	Apopka Flow-Way	Modified Semi-Monthly	41'-50'	45 feet	0.81	4.40
Clay Island Barn Road	1	Standard	Apopka Flow-Way	Modified Semi-Monthly	41'-50'	45 feet	0.96	5.30
Flow-Way East West Road	1	Standard	Apopka Flow-Way	Modified Semi-Monthly	41'-50'	45 feet	1.61	8.80
Hole in the Log Road	1	Standard	Apopka Flow-Way	Modified Semi-Monthly	41'-50'	45 feet	1.99	10.90
Maintenance Road 1	2	Standard	Apopka Flow-Way	Modified Semi-Monthly	41'-50'	45 feet	0.90	5.10
Maintenance Road 10	1	Standard	Apopka Flow-Way	Modified Semi-Monthly	41'-50'	45 feet	0.10	0.60
Maintenance Road 11	1	Standard	Apopka Flow-Way	Modified Semi-Monthly	41'-50'	45 feet	1.88	10.30
Maintenance Road 3	1	Standard	Apopka Flow-Way	Modified Semi-Monthly	41'-50'	45 feet	1.26	6.90
Maintenance Road 4	1	Standard	Apopka Flow-Way	Modified Semi-Monthly	41'-50'	45 feet	1.21	6.60
Maintenance Road 5	1	Standard	Apopka Flow-Way	Modified Semi-Monthly	41'-50'	45 feet	1.09	5.90
Maintenance Road 6	1	Standard	Apopka Flow-Way	Modified Semi-Monthly	41'-50'	45 feet	1.21	6.60
Maintenance Road 7	1	Standard	Apopka Flow-Way	Modified Semi-Monthly	41'-50'	45 feet	1.33	7.30
Maintenance Road 8	1	Standard	Apopka Flow-Way	Modified Semi-Monthly	41'-50'	45 feet	1.38	7.50
Maintenance Road 9	1	Standard	Apopka Flow-Way	Modified Semi-Monthly	41'-50'	45 feet	0.32	1.70
Tree Hammock Road	1	Standard	Apopka Flow-Way	Modified Semi-Monthly	31' - 40'	45 feet	0.43	2.40
West of Beauclair	1	Standard	Apopka Flow-Way	Modified Semi-Monthly	41'-50'	45 feet	3.37	10.50
Access Road	3	Standard	Duda	Modified Semi-Monthly	21' - 30'	30 feet	0.92	3.40
Apopka Loop Trail	3	Standard	Duda	Modified Semi-Monthly	21' - 30'	30 feet	2.43	8.80
East Beauclair	2 & 3	Standard	Duda	Modified Semi-Monthly	21' - 30'	30 feet	2.20	8.00
Maintenance Road 1 Duda	3	Standard	Duda	Modified Semi-Monthly	21' - 30'	30 feet	1.73	6.30
Maintenance Road 2 Duda	3	Standard	Apopka Flow-Way	Modified Semi-Monthly	21' - 30'	30 feet	0.75	2.70
Maintenance Road 3 Duda	3	Standard	Duda	Modified Semi-Monthly	21' - 30'	30 feet	0.56	2.00
Maintenance Road 4 Duda	3	Standard	Duda	Modified Semi-Monthly	21' - 30'	30 feet	0.92	3.50
Marsh Rabbit Rd (East/West Road)	3	Standard	Duda	Modified Semi-Monthly	21' - 30'	30 feet	2.80	10.20
Mc Donald Canal Maintenance Road	2	Standard	Duda	Modified Semi-Monthly	21' - 30'	30 feet	0.59	2.20
Mc Donald Canal Road South	2 & 3	Standard	Duda	Modified Semi-Monthly	21' - 30'	30 feet	2.90	10.50
North / South Road	2 & 3	Standard	Duda	Modified Semi-Monthly	21' - 30'	30 feet	1.40	5.00
Storm Water Park Road	4	Standard	Joned SWP	Modified Semi-Monthly	61' - 70'	60 feet	1.22	8.90
Mc Donald Canal Road North	3 & 4	Standard	Sand Farm	Modified Monthly	21' - 30'	30 feet	1.46	5.30
North Boundary Road	4	Standard	Sand Farm	Modified Monthly	21' - 30'	25	1.05	3.20
Sand Farm East Road	3 & 4	Standard	Sand Farm	Modified Monthly	21' - 30'	25	1.07	3.20
Sand Farm Road	3 & 4	Standard	Sand Farm	Modified Monthly	21' - 30'	25	1.91	5.80
Sand Farm Road 2	3 & 4	Standard	Sand Farm	Modified Monthly	21' - 30'	25	0.47	1.40
Sand Farm Road 3	3 & 4	Standard	Sand Farm	Modified Monthly	21' - 30'	25	0.21	0.70
Sand Farm Road 4	3 & 4	Standard	Sand Farm	Modified Monthly	21' - 30'	25	0.76	2.30
Sand Farm Road 5	3 & 4	Standard	Sand Farm	Modified Monthly	21' - 30'	25	0.71	2.20
Sand Farm Road 6	3 & 4	Standard	Sand Farm	Modified Monthly	21' - 30'	25	0.76	2.30
Sand Farm West	3 & 4	Standard	Sand Farm	Modified Monthly	21' - 30'	25	2.28	6.90
Airport Road	6 & 7	Standard	Zellwood	Modified Semi-Monthly	21' - 30'	30	1.41	5.10
Apopka Loop Trail	5, 6 & 7	Standard	Zellwood	Modified Semi-Monthly	21' - 30'	25	6.65	20.20
Hooper Farm Road	6 & 7	Standard	Zellwood	Modified Semi-Monthly	21' - 30'	25	1.26	3.80
Interceptor Road	3, 4 & 5	Standard	Zellwood	Modified Semi-Monthly	31' - 40'	35	1.49	6.30
Lake Level Canal Road	3 & 4	Standard	Zellwood	Modified Semi-Monthly	41' - 50'	45	3.99	25.00
Laughlin Road	4 & 5	Standard	Zellwood	Modified Semi-Monthly	31' - 40'	35	3.41	14.50
Laughlin Road 2	4 & 5	Standard	Zellwood	Modified Semi-Monthly	31' - 40'	35	2.19	8.60
Lust Road	6 & 7	Standard	Zellwood	Modified Semi-Monthly	31' - 40'	35	2.07	8.80
McDonald Canal Road	4 & 5	Standard	Zellwood	Modified Semi-Monthly	61' - 70'	65	2.57	20.30
Mesocosm Road	6 & 7	Standard	Zellwood	Modified Semi-Monthly	21' - 30'	25	0.75	0.00
Pole Road	5 & 6	Standard	Zellwood	Modified Semi-Monthly	31' - 40'	35	1.01	4.30
Potters Farm Road	4 & 5	Standard	Zellwood	Modified Semi-Monthly	21' - 30'	25	1.49	4.50

Lake Apopka North Shore

Large Machine Mowing

Levee/Roads	Map Page	Mowing Type	Section	Frequency	Width Range (feet)	Average Width (feet)	Length (miles)	Acres (Calculated)
Potters Farm Road 2	4 & 5	Standard	Zellwood	Modified Semi-Monthly	21' - 30'	25	0.98	3.00
Roach Road	5 & 6	Standard	Zellwood	Modified Semi-Monthly	21' - 30'	25	1.05	3.20
Roach Road 2	5 & 6	Standard	Zellwood	Modified Semi-Monthly	21' - 30'	25	1.06	3.20
Shop Road	4 & 5	Standard	Zellwood	Modified Semi-Monthly	21' - 30'	25	0.50	1.50
Modified Semi-Monthly Large Machine Acres Total:								322.5
Modified Monthly Large Machine Acres Total:								33.3
Total Large Machine Acres:								355.8



Lake Apopka North Shore Large Machine Mowing September 2019



1:30,770

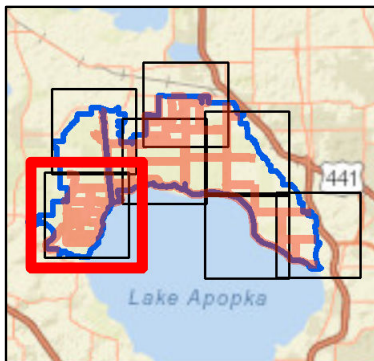


Legend

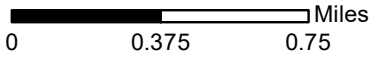
-  Large Machine Mowing
-  Management Area Boundary

Map Page 1

Map Location





Lake Apopka North Shore Large Machine Mowing September 2019



1:30,770

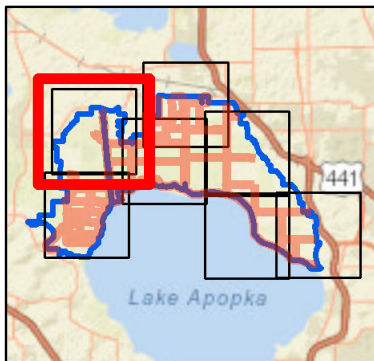


Legend

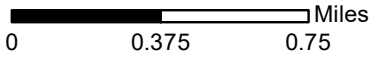
-  Large Machine Mowing
-  Management Area Boundary

Map Page 2

Map Location



Lake Apopka North Shore Large Machine Mowing September 2019



1:30,770

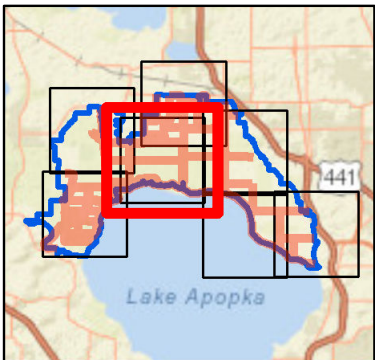


Legend

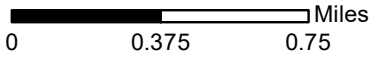
- Large Machine Mowing
- Management Area Boundary

Map Page 3

Map Location





Lake Apopka North Shore
Large Machine Mowing
September 2019



1:30,770



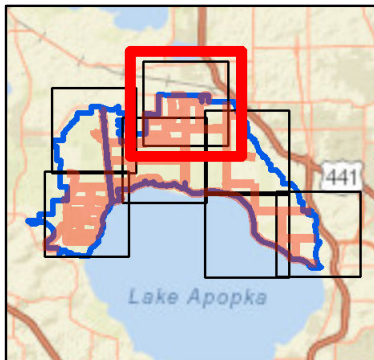
Legend

-  Large Machine Mowing
-  Management Area Boundary

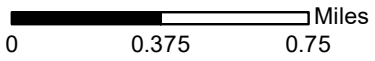


Map Page 4

Map Location





Lake Apopka North Shore Large Machine Mowing September 2019



1:30,770



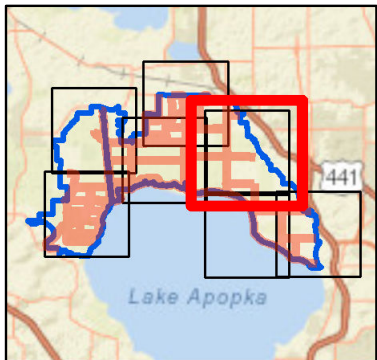
Legend

-  Large Machine Mowing
-  Management Area Boundary

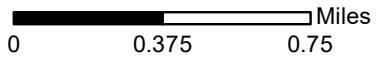
ZELLWOOD SECTION

Map Page 5

Map Location





Lake Apopka North Shore
Large Machine Mowing
September 2019



1:30,770



Legend

-  Large Machine Mowing
-  Management Area Boundary

Lake Apopka

ZELLWOOD SECTION

Apopka Loop Trail

Laughlin Road

Roach Road

Pole Road

Lust Road

Airport Road

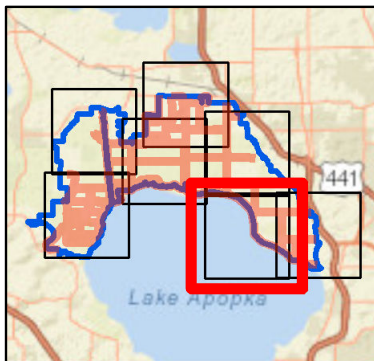
Hooper Farms Road

Apopka Loop Trail

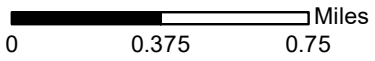
Mesocosm Road

Map Page 6

Map Location





Lake Apopka North Shore
Large Machine Mowing
September 2019



1:30,770

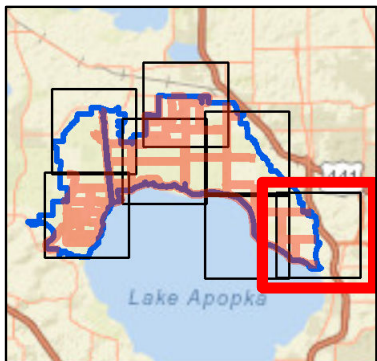


Legend

-  Large Machine Mowing
-  Management Area Boundary

Map Page 7

Map Location



Lake Apopka

Lake Harris Bayou

Large Machine Mowing

Levee/Roads	Map Page	Mowing Type	Frequency	Width Range (feet)	Average Width (feet)	Length (miles)	Acres (Calculated)
Access Easement	1	Batwing	Modified Monthly	21' - 30'	30	0.82	3.00
Boat Ramp Rd	1	Batwing	Modified Monthly	21' - 30'	30	0.25	0.90
Canal Road	1	Batwing	Modified Monthly	21' - 30'	30	0.25	0.90
Total Modified Monthly Acres:							4.80
Total Large Machine Acres:							4.80





Lake Harris
Conservation Area
Large Machine
Mowing
September 2019

0 0.375 0.75 Miles

1:30,760



Legend

-  Large Machine Mowing
-  Primary Road
-  Secondary Road
-  Management Area Boundary

Map Page 1

Map Location

