

West Region Large Machine Mowing Location, Acreage and Frequency

Pages 1-19

Lochloosa Conservation Area

Large Machine Mowing

Levee/Roads	Map Page	Mowing Type	Frequency	Width Range (feet)	Average Width (feet)	Length (miles)	Acres (Calculated)
1st. Rd.	2	Batwing	Semi Annual	11'-20'	15	1.13	2.10
Airboat Rd.	1	Batwing	Modified Monthly	31'-40'	34	0.60	2.50
Bay Pond Rd.	2	Batwing	Semi Annual	11'-20'	15	0.38	0.70
Burnt Island Loop 1	1	Batwing	Semi Annual	11'-20'	24	1.41	4.10
Burnt Island Loop 2	1	Batwing	Semi Annual	11'-20'	24	0.79	2.30
Burnt Island Road	1, 2	Batwing	Modified Monthly	21'-30'	30	2.37	8.60
Burnt Oaks Rd.	1, 2	Batwing	Semi Annual	11'-20'	15	0.28	0.50
Cooter Bob Road	1, 2	Batwing	Modified Monthly	31'-40'	35	1.70	7.20
Cut Down Rd.	1, 2	Batwing	Semi Annual	11'-20'	15	0.38	0.70
Cut Through Rd. 1	1, 2	Batwing	Semi Annual	11'-20'	8	0.79	0.80
Cut Through Rd. 2	1	Batwing	Semi Annual	11'-20'	8	0.83	0.80
Dead Cow Rd.	1, 2	Batwing	Modified Monthly	31'-40'	35	0.64	2.70
Dozer Rd.	1, 2	Batwing	Modified Monthly	21'-30'	25	0.26	0.80
Fence line Rd.	2	Batwing	Modified Monthly	11'-20'	20	1.86	4.51
Lake Rd.	1	Batwing	Modified Monthly	31'-40'	36	0.25	1.10
Marsh Point Rd.	1, 2	Batwing	Modified Monthly	21'-30'	25	0.37	1.10
Marsh Road	1, 2	Batwing	Modified Monthly	31'-40'	35	1.22	5.20
Platform Road	1, 2	Batwing	Modified Monthly	31'-40'	35	0.52	2.20
Rut Tree Rd.	1, 2	Batwing	Semi Annual	11'-20'	15	0.56	1.00
Sandy Rd	2	Batwing	Modified Monthly	11'-20'	14	0.29	0.50
Total Modified Monthly:							36.41
Total Semi-Annual:							13.00
Total Large Machine Acres:							49.41





Lochloosa Wildlife
Conservation Area
Large Machine Mowing
September 2019

0 0.375 0.75 Miles



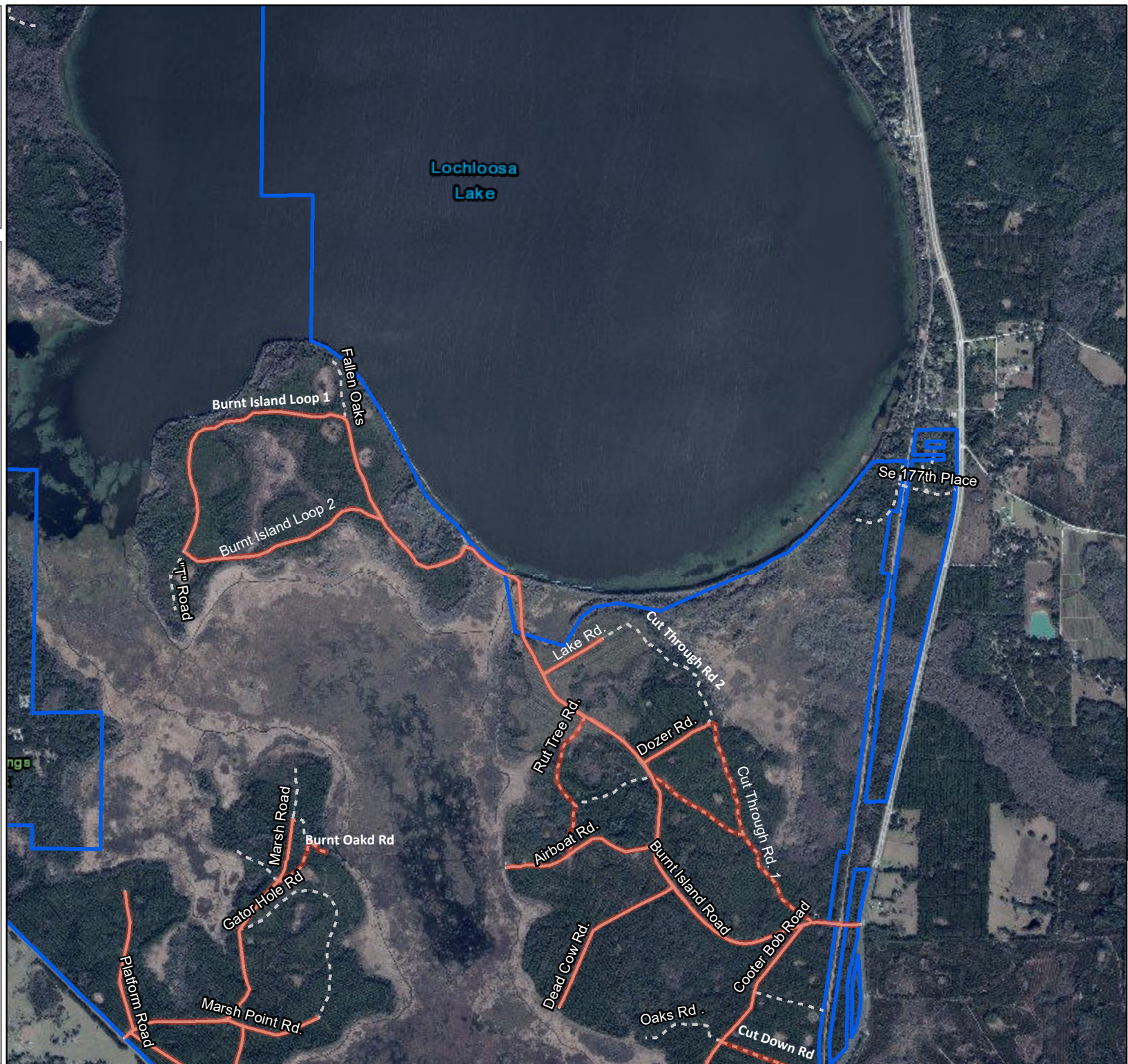
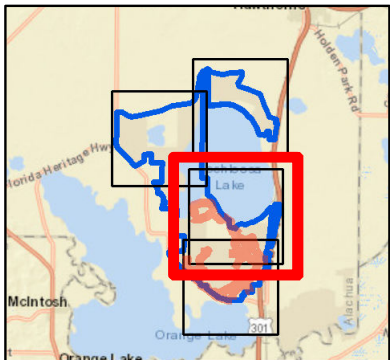
1:30,770

Legend

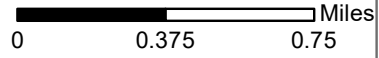
-  Large Machine Mowing
-  Primary Road
-  Secondary Road
-  Management Area Boundary

Map Page
1 of 2

Map Location



Lochloosa Wildlife
Conservation Area
Large Machine Mowing
September 2019

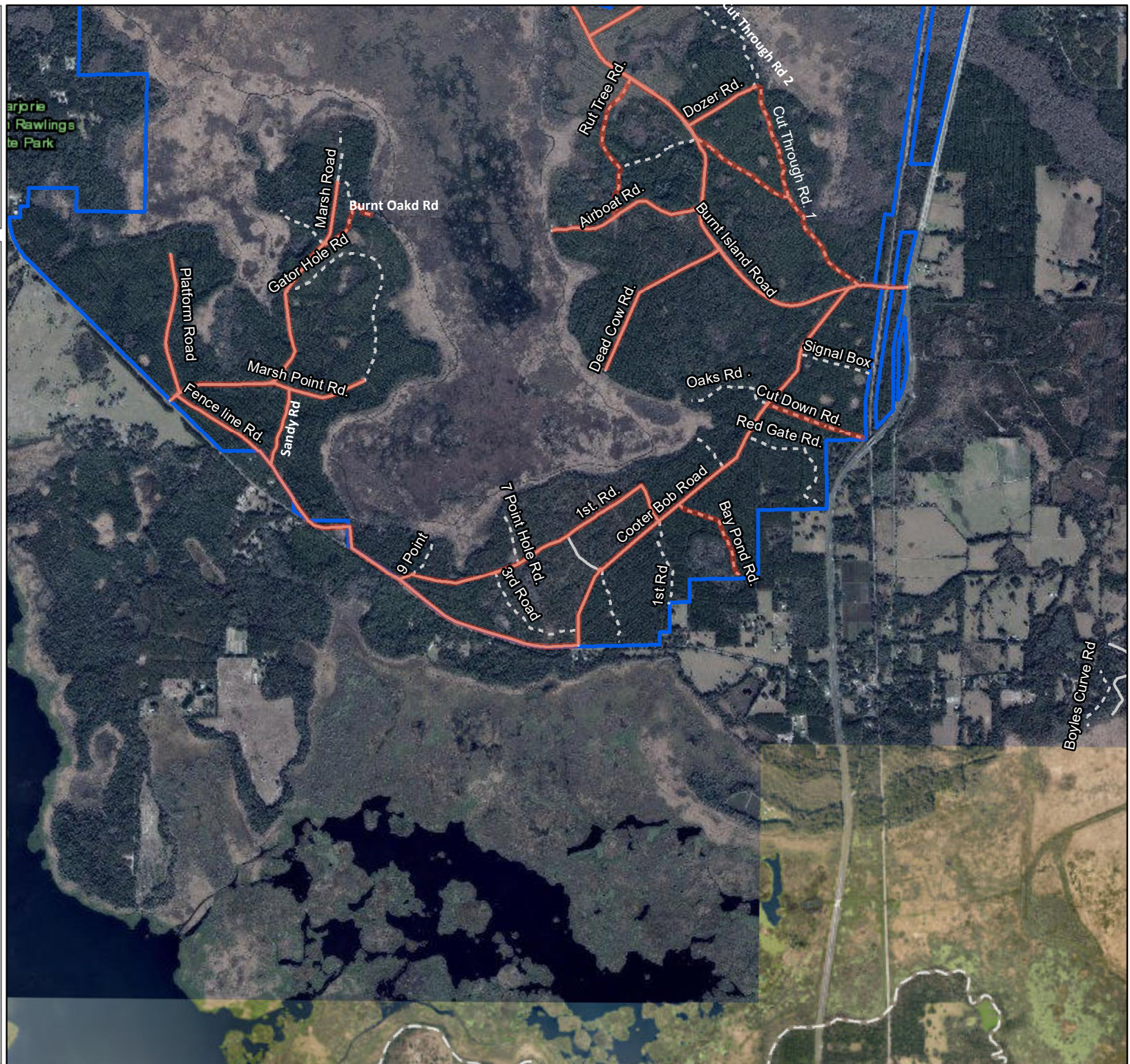


1:30,770



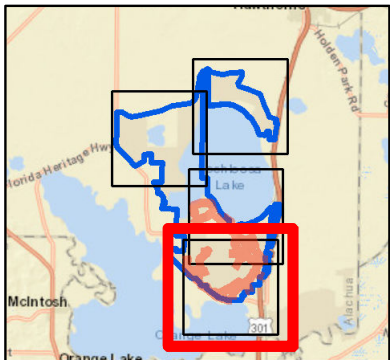
Legend

- Large Machine Mowing
- Primary Road
- Secondary Road
- Management Area Boundary



Map Page
2 of 2

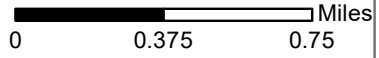
Map Location



Longleaf Flatwoods
Large Machine Mowing

Levee/Roads	Map Page	Mowing Type	Frequency	Width Range (feet)	Average Width (feet)	Length (miles)	Acres (Calculated)
Camp Rd. 1	2	Batwing	Modified Monthly	11'-20'	26	0.45	1.40
Camp Rd. 2	2	Batwing	Modified Monthly	21'-30'	13	0.19	0.30
Camps Canal Grade	1	Batwing	Modified Monthly	11'-20'	26	0.55	1.70
Railroad Grade	1	Batwing	Modified Monthly	21'-30'	25	1.31	4.00
River Styx Grade 1	2	Batwing	Modified Monthly	21'-30'	26	0.25	0.80
River Styx Grade 2	2	Batwing	Modified Monthly	21'-30'	25	0.43	1.30
River Styx Grade 3	1, 2	Batwing	Modified Monthly	31' - 40'	35	0.92	3.90
River Styx Grade 4	1	Batwing	Modified Monthly	21'-30'	25	0.53	1.60
River Styx Grade 5	1	Batwing	Modified Monthly	21'-30'	25	2.15	6.50
Road 1	2	Batwing	Modified Monthly	11'-20'	15	1.20	2.20
Road 2	2	Batwing	Modified Monthly	11'-20'	15	0.61	1.10
Road 3	2	Batwing	Modified Monthly	11'-20'	15	0.45	0.80
Road 4	2	Batwing	Modified Monthly	11'-20'	15	0.90	1.60
Road 5	2	Batwing	Modified Monthly	11'-20'	15	0.73	1.30
Road 6	1	Batwing	Semi Annual	11'-20'	15	0.98	1.80
Road 7	1	Batwing	Modified Monthly	21'-30'	25	0.37	1.10
Road 8	1	Batwing	Modified Monthly	11'-20'	15	0.16	0.30
Road 9	1	Batwing	Modified Monthly	11'-20'	15	0.70	1.30
Road 10	1	Batwing	Semi Annual	11'-20'	14	0.46	0.80
Road 11	1	Batwing	Semi Annual	11'-20'	14	0.24	0.40
Road 12	1	Batwing	Semi Annual	11'-20'	15	0.44	0.80
Total Modified Monthly:							31.20
Total Semi-Annual:							3.80
Total Large Machine Acres:							35.00

Longleaf Flatwoods Reserve
Reserve
Large Machine Mowing
September 2019



1:30,770

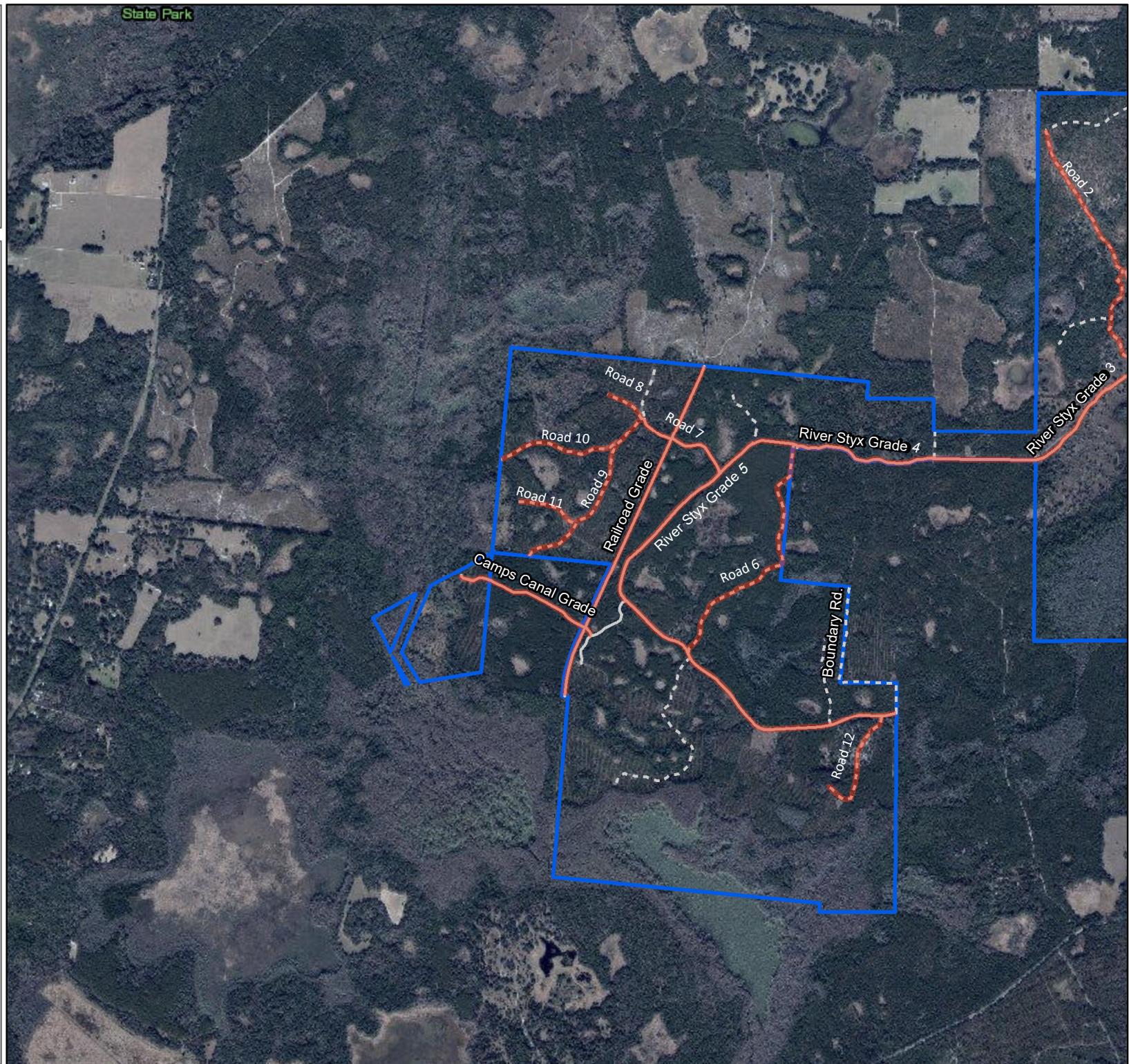
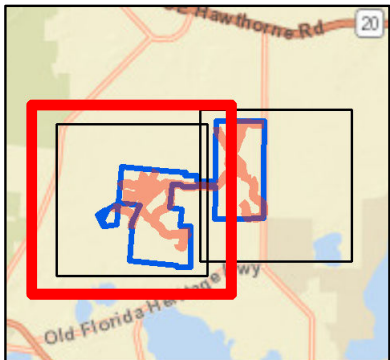


Legend

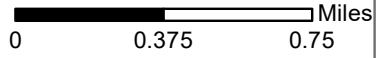
- Large Machine Mowing
- Primary Road
- Secondary Road
- Management Area Boundary

Map Page
1 of 2

Map Location



Longleaf Flatwoods Reserve
Reserve
Large Machine Mowing
September 2019



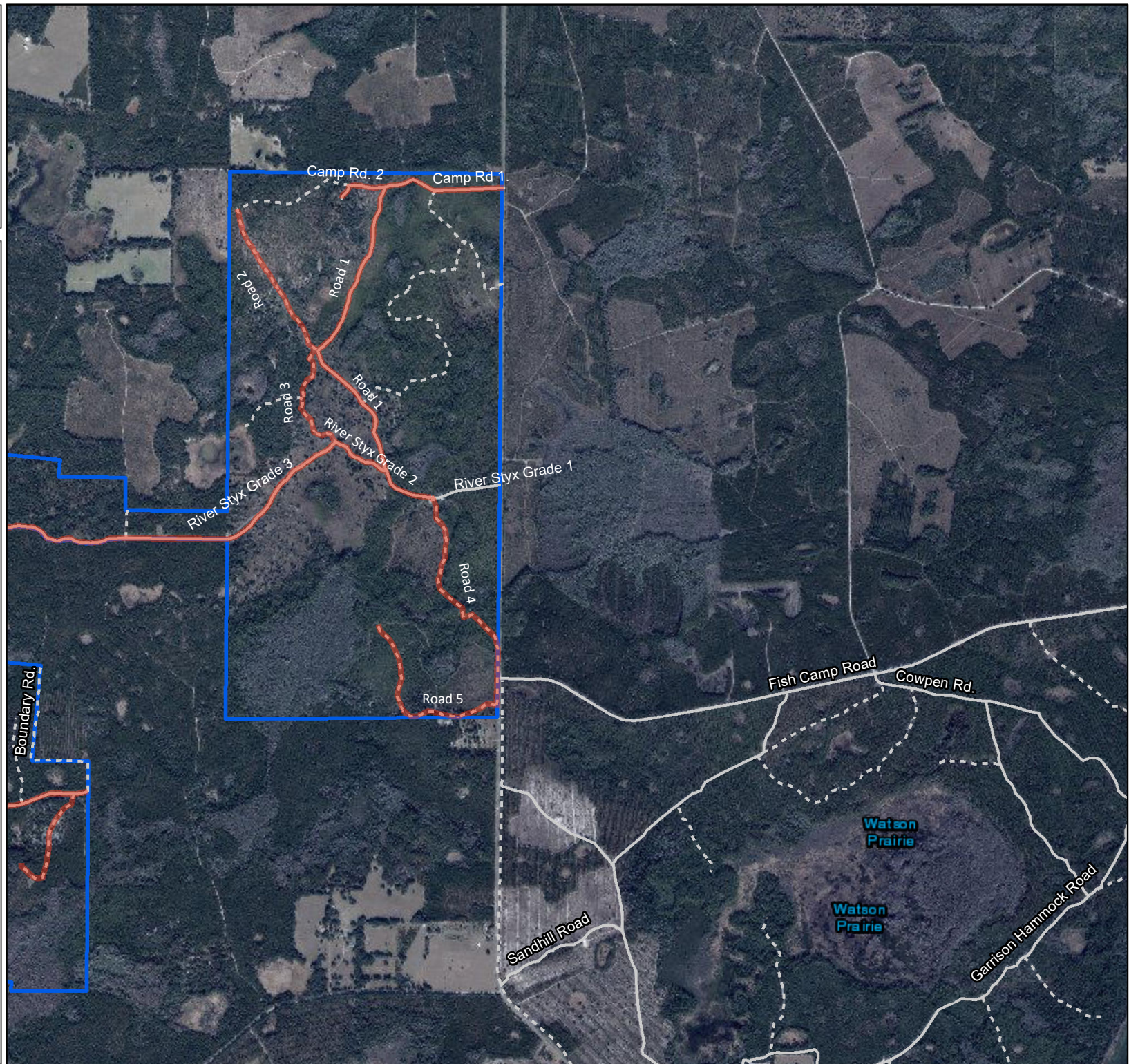
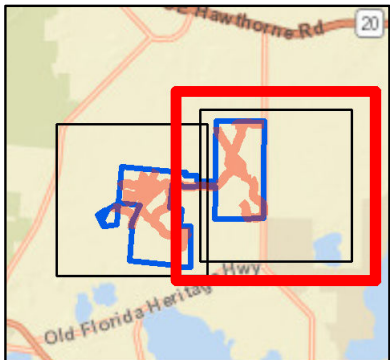
1:30,770

Legend

- Large Machine Mowing
- Primary Road
- Secondary Road
- Management Area Boundary

Map Page
2 of 2

Map Location



Newnans Lake Conservation Area

Large Machine Mowing

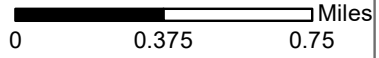
Levee/Roads	Map Page	Mowing Type	Frequency	Width Range (feet)	Average Width (feet)	Length (miles)	Acres (Calculated)
7 Point Rd	1	Standard	Modified Monthly	11'-20'	10	1.98	2.00
Boundary Road 1	1	Standard	Modified Monthly	11'-20'	10	0.54	0.50
Boundary Road 2	1, 2	Standard	Modified Monthly	31'-40'	10	4.67	4.70
Break Rd.	1	Standard	Modified Monthly	11'-20'	10	0.85	0.90
Camp Rd West	2	Standard	Modified Monthly	11'-20'	10	0.35	0.40
Cemetery Road	1	Standard	Modified Monthly	11'-20'	10	0.41	0.40
Center Road	1	Standard	Modified Monthly	31'-40'	10	4.58	4.60
Connector Road	1	Standard	Modified Monthly	11'-20'	15	0.18	0.30
Cow Pen Road	2	Standard	Modified Monthly	11'-20'	30	0.34	1.20
Creek Rd	1	Standard	Modified Monthly	21'-30'	13	0.13	0.20
Duck Pond	1	Standard	Modified Monthly	11'-20'	15	0.72	1.30
Main Gate	1	Standard	Modified Monthly	11'-20'	17	0.10	0.20
Newnans Grade	2	Standard	Modified Monthly	11'-20'	36	2.00	8.80
North Road	1	Standard	Modified Monthly	31'-40'	10	0.83	1.50
Old Gainesville Rd 1	1	Standard	Modified Monthly	21'-30'	24	0.27	0.80
Old Gainesville Rd 2	1	Standard	Modified Monthly	21'-30'	25	0.70	2.10
South Camp Rd 1	2	Standard	Modified Monthly	11'-20'	15	0.43	0.80
South Camp Rd 2	2	Standard	Modified Monthly	11'-20'	15	0.28	0.50
South Camp Rd 3	2	Standard	Modified Monthly	11'-20'	25	0.40	1.20
Swamp Loop	1	Standard	Modified Monthly	21'-30'	45	1.32	7.20
Sweetheart Grade 1	3	Standard	Modified Monthly	21'-30'	25	0.60	1.80
Sweetheart Grade 2	3	Standard	Modified Monthly	21'-30'	20	0.10	0.20
Thinnings Grade	2	Standard	Modified Monthly	31'-40'	26	0.55	1.70
Two-Bridge Road	1	Standard	Modified Monthly	11'-20'	23	1.50	4.20
North Road 1	1	Standard	Modified Monthly	31'-40'	34	0.58	2.40
North Road 2	1	Standard	Modified Monthly	21'-30'	26	0.16	0.50
North Road 3	1	Standard	Modified Monthly	11'-20'	26	0.61	1.90
North Road 4	1	Standard	Modified Monthly	21'-30'	25	0.89	2.70
North Road 5	1	Standard	Modified Monthly	11'-20'	25	0.20	0.60
North Road 6	1	Standard	Modified Monthly	5'-10'	28	0.15	0.50
South Road 1	2	Standard	Modified Monthly	11'-20'	14	0.29	0.50
South Road 2	2	Standard	Modified Monthly	11'-20'	10	0.52	0.60
South Road 3	2	Standard	Modified Monthly	21'-30'	15	0.32	0.60
South Road 4	2	Standard	Modified Monthly	21'-30'	15	0.34	0.60
South Road 5	2	Standard	Modified Monthly	5'-10'	24	0.71	2.10
South Road 6	2	Standard	Modified Monthly	11'-20'	25	0.30	0.90
South Road 7	2	Standard	Modified Monthly	11'-20'	9	0.28	0.30
South Road 8	2	Standard	Modified Monthly	41'-50'	15	0.73	1.30
South Road 9	2	Standard	Modified Monthly	11'-20'	16	0.37	0.70
South Road 10	2	Standard	Modified Monthly	11'-20'	25	0.20	0.60
South Road 11	2	Standard	Modified Monthly	11'-20'	15	0.56	1.00
South Road 12	2	Standard	Modified Monthly	11'-20'	10	0.48	0.60
South Road 13	2	Standard	Modified Monthly	11'-20'	16	1.00	1.90
South Road 14	2	Standard	Modified Monthly	11'-20'	15	0.73	1.30
South Road 15	2	Standard	Modified Monthly	11'-20'	17	0.30	0.60
South Road 16	3	Standard	Modified Monthly	11'-20'	14	0.46	0.80
South Road 17	3	Standard	Modified Monthly	11'-20'	14	0.18	0.30

Newnans Lake Conservation Area

Large Machine Mowing

Levee/Roads	Map Page	Mowing Type	Frequency	Width Range (feet)	Average Width (feet)	Length (miles)	Acres (Calculated)
South Road 18	3	Standard	Modified Monthly	11'-20'	15	0.34	0.60
South Road 19	3	Standard	Modified Monthly	21'-30'	14	0.23	0.40
West Road 1	1	Standard	Modified Monthly	11'-20'	14	0.40	0.70
West Road 2	1	Standard	Modified Monthly	21'-30'	24	1.50	4.40
West Road 3	1	Standard	Modified Monthly	21'-30'	28	0.15	0.50
Total Large Machine Acres:							77.40

Newnans Lake
Conservation Area
Large Machine Mowing
September 2019



1:30,770

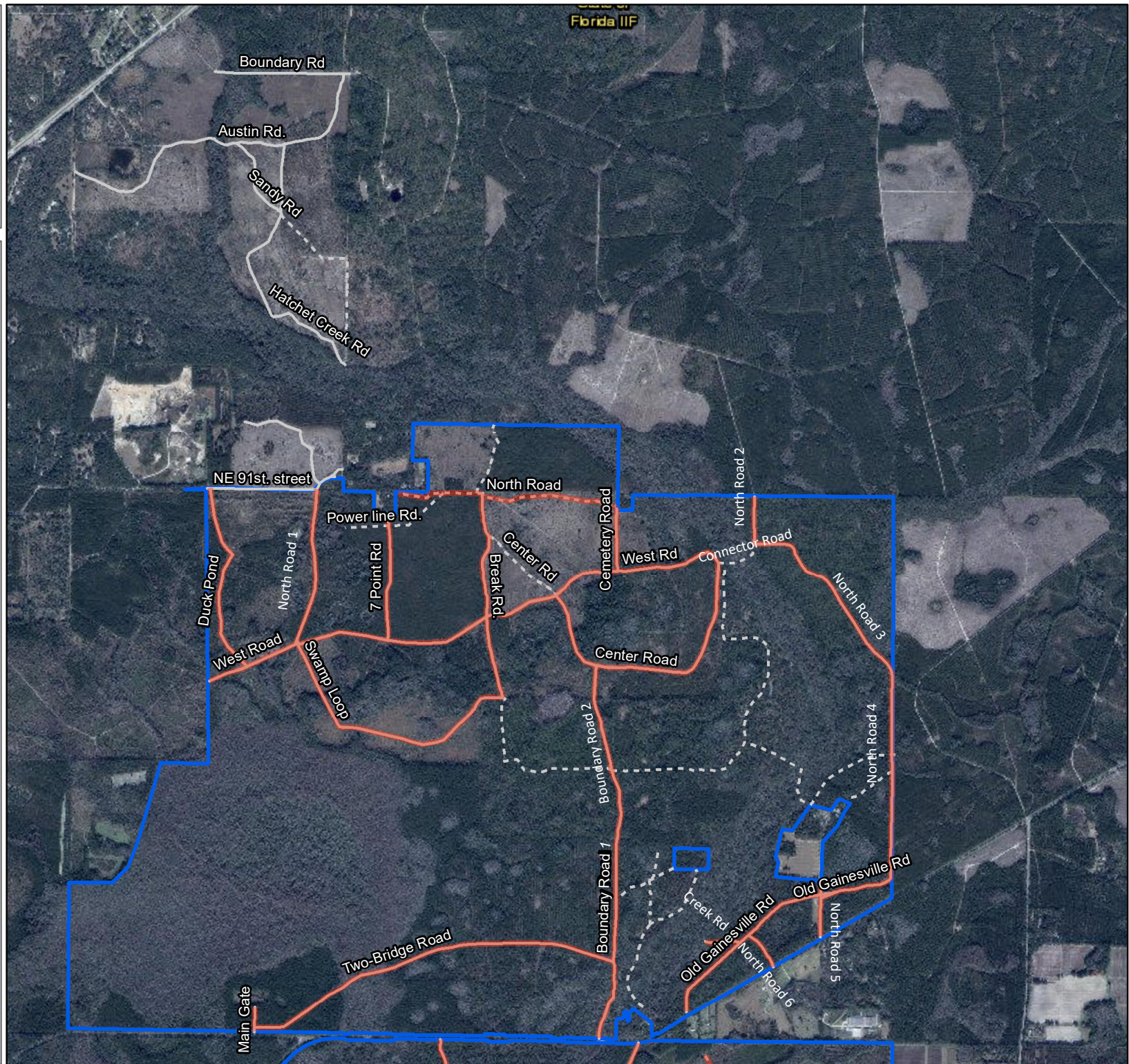
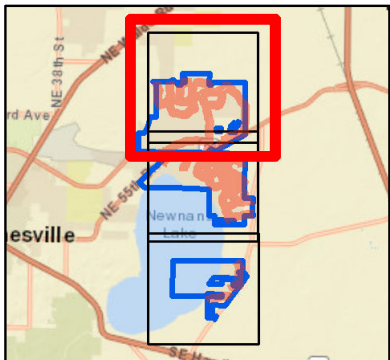


Legend

- Large Machine Mowing
- Primary Road
- Secondary Road
- Management Area Boundary

Map Page
1 of 3

Map Location







Newnans Lake
Conservation Area
Large Machine Mowing
September 2019

0 0.375 0.75 Miles



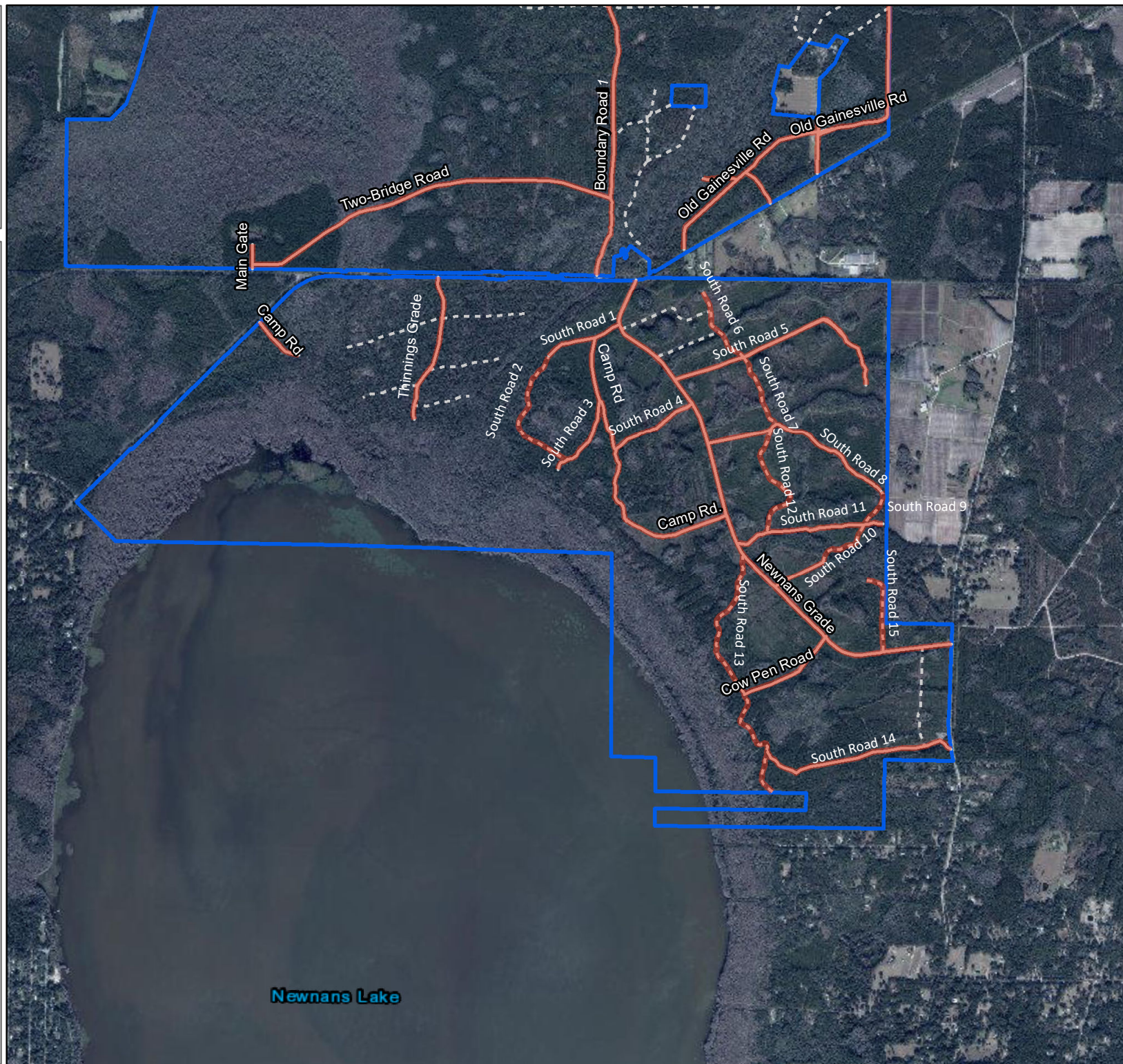
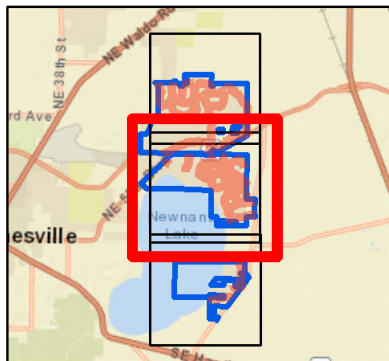
1:30,770

Legend

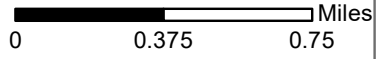
-  Large Machine Mowing
-  Primary Road
-  Secondary Road
-  Management Area Boundary

Map Page
2 of 3

Map Location







Newnans Lake
Conservation Area
Large Machine Mowing
September 2019



1:30,770

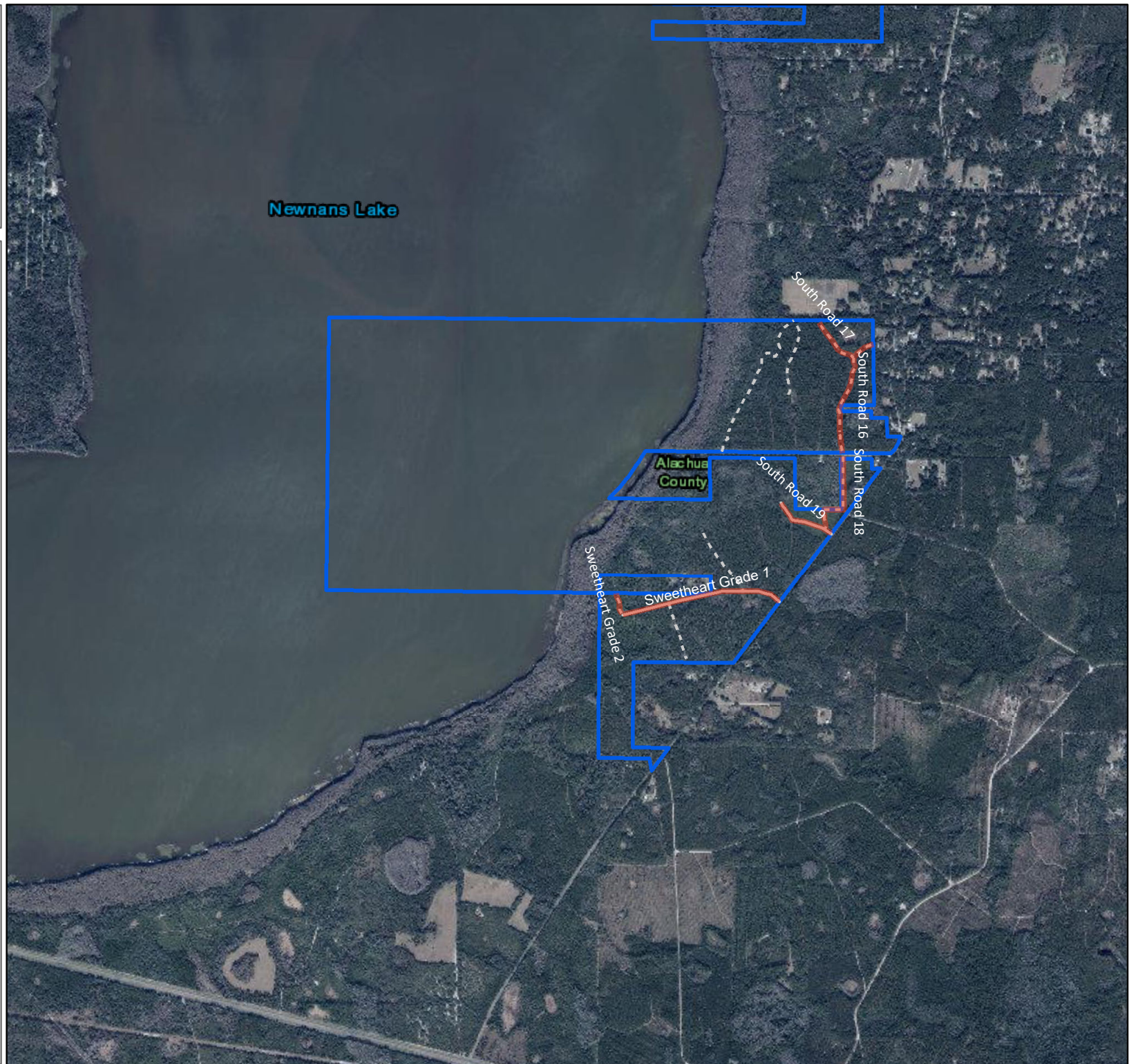
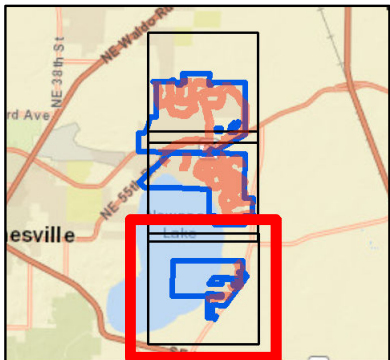


Legend

-  Large Machine Mowing
-  Primary Road
-  Secondary Road
-  Management Area Boundary

Map Page
3 of 3

Map Location

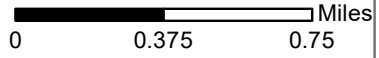


Orange Creek Restoration Area

Large Machine Mowing

Levee/Roads	Map Page	Mowing Type	Frequency	Width Range (feet)	Average Width (feet)	Length (miles)	Acres (Calculated)
Camp Road	1	Batwing	Modified Monthly	21'-30'	25	0.10	0.30
Citra Ranch Rd 1	1	Batwing	Modified Monthly	21'-30'	35	0.94	4.00
Citra Ranch Rd 2	1	Batwing	Modified Monthly	21'-30'	29	0.26	0.90
Clara Boyles Rd 1	1	Batwing	Modified Monthly	11'-20'	17	0.25	0.50
Clara Boyles Rd 2	1	Batwing	Modified Monthly	21'-30'	25	0.26	0.80
Clara Boyles Rd 3	1	Batwing	Modified Monthly	11'-20'	16	0.21	0.40
Doc Parramore Rd	1	Batwing	Modified Monthly	11'-20'	14	0.23	0.40
Ergle Farm Rd	1	Batwing	Modified Monthly	21'-30'	25	0.43	1.30
Lochloosa Circle	1	Batwing	Modified Monthly	11'-20'	15	0.91	1.70
Marsh Edge Rd.	1	Batwing	Modified Monthly	11'-20'	15	0.64	1.20
Marsh Rd	1	Batwing	Modified Monthly	11'-20'	15	0.27	0.50
Middle Bridge Rd	1	Batwing	Modified Monthly	21'-30'	25	0.47	1.40
Miller Farm Rd	1	Batwing	Modified Monthly	21'-30'	26	0.58	1.80
Needmore Rd	1	Batwing	Modified Monthly	21'-30'	25	0.67	2.00
Pinner Farm Rd	1	Batwing	Modified Monthly	5' - 10'	172	0.12	2.50
Pump House Rd	1	Batwing	Modified Monthly	11'-20'	17	0.15	0.30
Sam Sykes Rd	1	Batwing	Modified Monthly	21'-30'	24	0.14	0.40
Shands Hammock Rd	1	Batwing	Modified Monthly	21'-30'	25	0.81	2.50
Shands Trail	1	Batwing	Modified Monthly	21'-30'	25	0.66	2.00
Sykes Cemetery Rd	1	Batwing	Modified Monthly	21'-30'	25	0.59	1.80
Tar Box Island Rd 1	1	Batwing	Modified Monthly	11'-20'	15	0.48	0.90
Tar Box Island Rd 2	1	Batwing	Modified Monthly	21'-30'	25	0.68	2.10
Tar Box Island Rd 3	1	Batwing	Modified Monthly	21'-30'	25	0.23	0.70
Windmill Rd	1	Batwing	Modified Monthly	21'-30'	25	1.34	4.10
Total Large Machine Acres:							34.50

Orange Creek
Restoration Area
Large Machine Mowing
September 2019



1:30,770

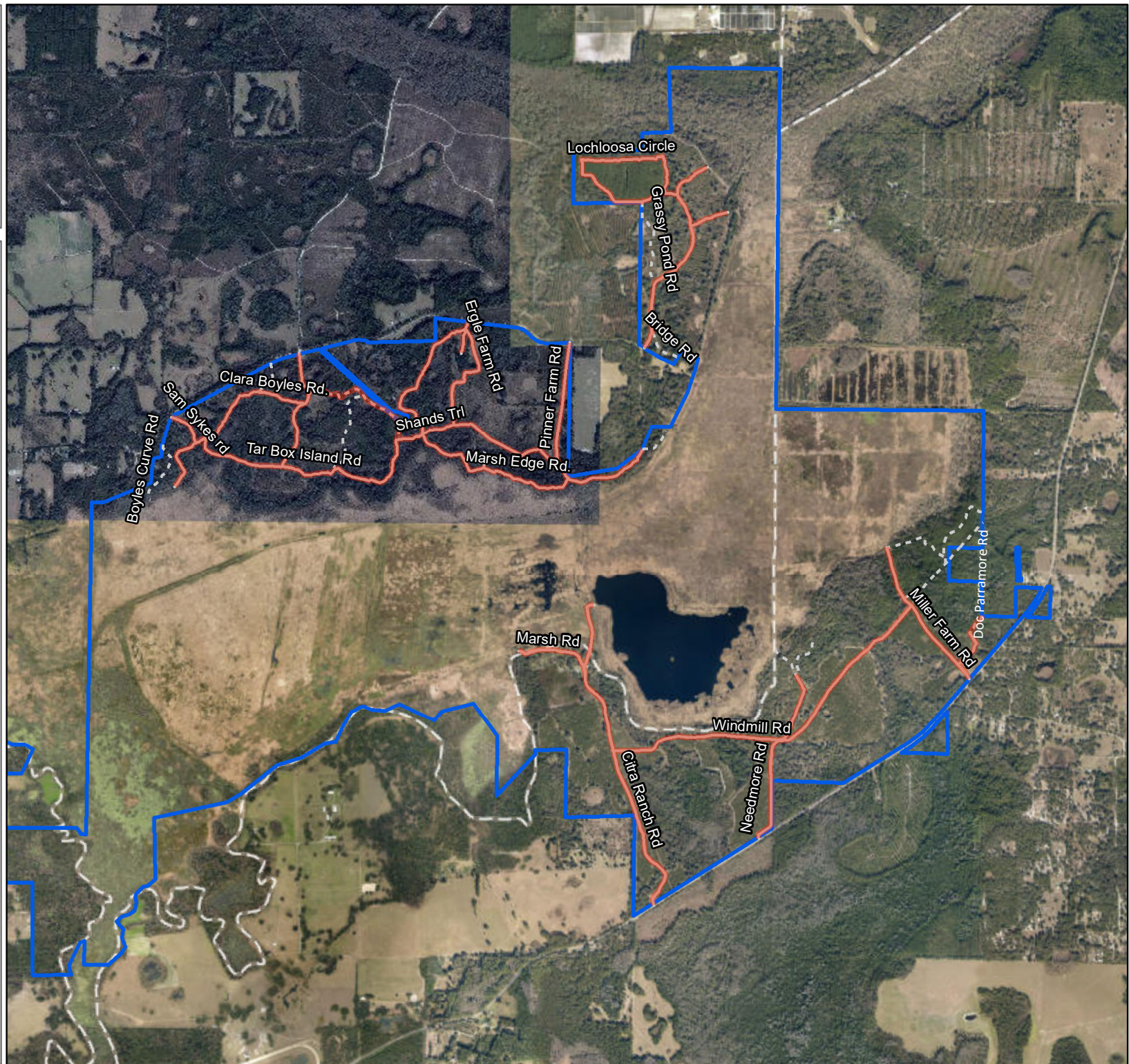
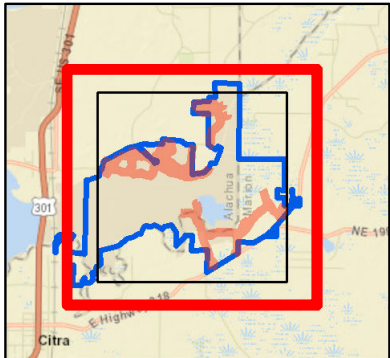


Legend

- Large Machine Mowing
- Primary Road
- Secondary Road
- Management Area Boundary

Map Page
1 of 1

Map Location

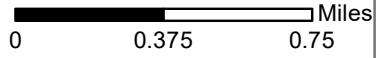


Rice Creek Conservation Area

Large Machine Mowing

Levee/Roads	Map Page	Mowing Type	Frequency	Width Range (feet)	Average Width (feet)	Length (miles)	Acres (Calculated)
Bay Road	1	Standard	Modified Monthly	21'-30'	10	0.12	0.10
Bolan Ramp Road	1	Standard	Modified Monthly	31'-40'	35	1.14	4.80
Boundary Rd	1	Standard	Modified Monthly	21'-30'	25	1.08	3.30
Cedar Road	2	Standard	Semi-Annual	5'-10'	10	0.31	0.40
Crayfish Road	1	Standard	Modified Monthly	21'-30'	30	1.31	4.80
Crayfish Tram	1	Standard	Modified Monthly	21'-30'	25	0.29	0.90
Culvert Rd	1	Standard	Modified Monthly	21'-30'	25	0.46	1.40
Fish Rd	1	Standard	Modified Monthly	21'-30'	25	0.24	0.70
Gas Line Road	2	Standard	Semi-Annual	5'-10'	10	0.35	0.40
Green Tractor Rd	1	Standard	Modified Monthly	21'-30'	25	0.48	1.50
Mud Road	2	Standard	Modified Monthly	21'-30'	25	0.32	1.00
No Name Road	2	Standard	Semi-Annual	21'-30'	10	0.94	1.00
Orange Tree Road	1, 2	Standard	Modified Monthly	21'-30'	25	0.50	1.50
Pine Island Road	1	Standard	Modified Monthly	11'-20'	15	0.51	0.90
Pond Road	2	Standard	Modified Monthly	21'-30'	25	0.16	0.50
Sandy Rd	1	Standard	Modified Monthly	21'-30'	25	0.39	1.20
Short Grade Road	1	Standard	Modified Monthly	11'-20'	15	0.41	0.70
South Boundary Road	2	Standard	Semi-Annual	5'-10'	10	0.16	0.20
Springside Road	1	Standard	Modified Monthly	21'-30'	30	1.17	4.30
Stub Rd	1	Standard	Modified Monthly	21'-30'	25	0.37	1.10
Tram Rd	1	Standard	Modified Monthly	21'-30'	25	0.22	0.70
Tulip Tree Road	1	Standard	Modified Monthly	21'-30'	25	0.43	1.30
Turkey Road	1	Standard	Modified Monthly	11'-20'	15	0.42	0.80
Unnamed Road 1	2	Standard	Modified Monthly	21'-30'	22.5	0.11	0.30
Unnamed Road 2	2	Standard	Modified Monthly	21'-30'	28	0.09	0.30
Unnamed Road 3	1, 2	Standard	Modified Monthly	21'-30'	25	0.17	0.50
Unnamed Road 4	1, 2	Standard	Modified Monthly	21'-30'	26	0.22	0.70
West Rice Creek Road	2	Standard	Modified Monthly	21'-30'	30	0.44	1.60
Total Modified Monthly:							34.90
Total Semi-Annual:							2.00
Total Large Machine Acres:							36.90

Rice Creek
Conservation Area
Large Machine Mowing
September 2019



1:30,770

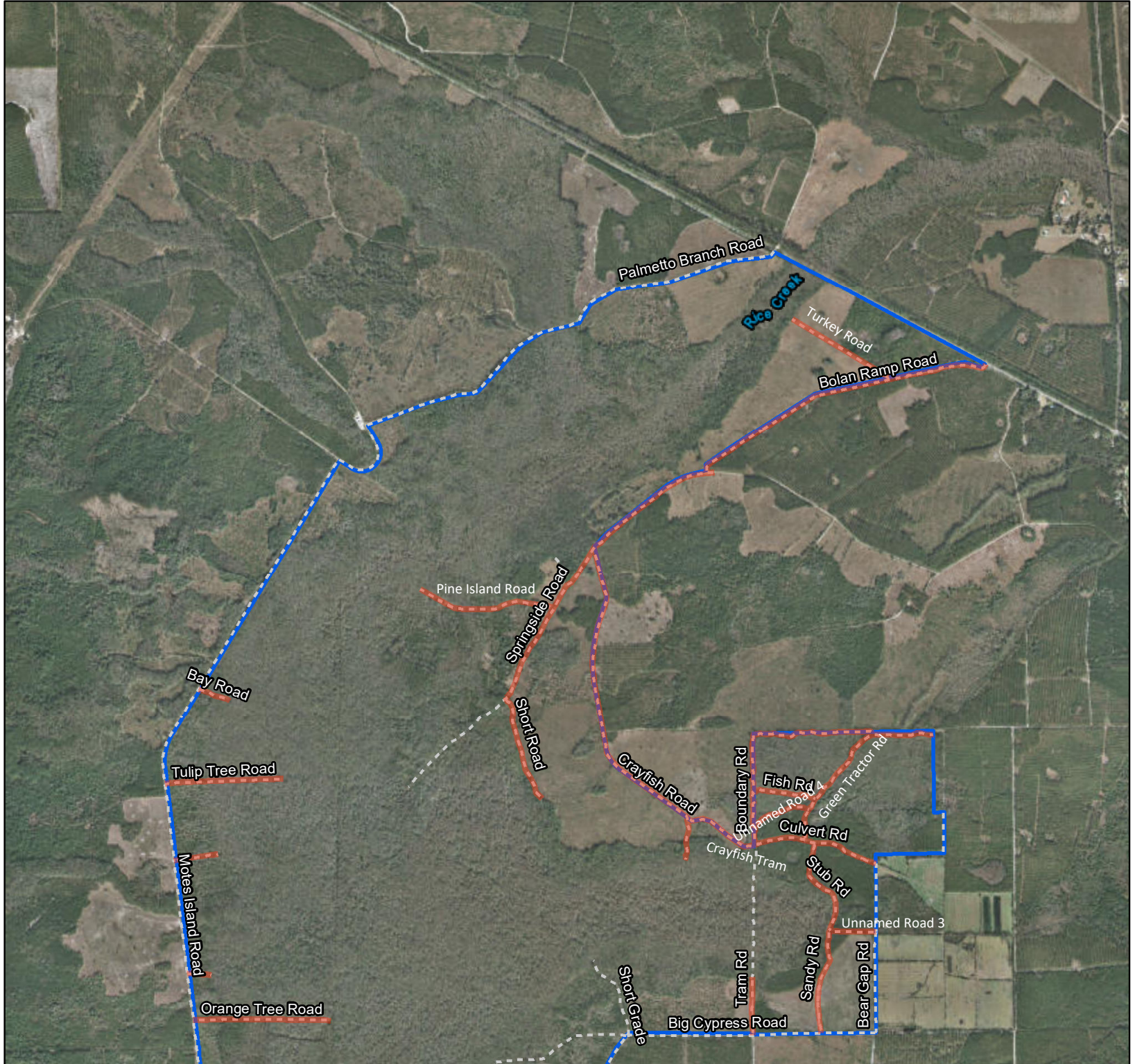
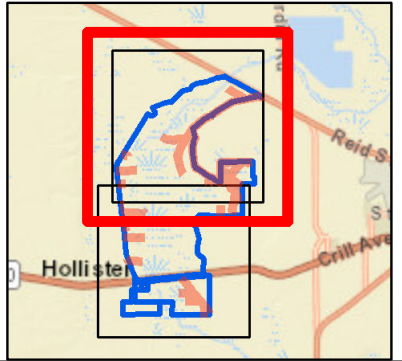


Legend

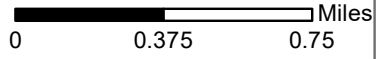
- Large Machine Mowing
- Secondary Road
- Management Area Boundary

Map Page
1 of 2

Map Location



Rice Creek
Conservation Area
Large Machine Mowing
September 2019



1:30,770

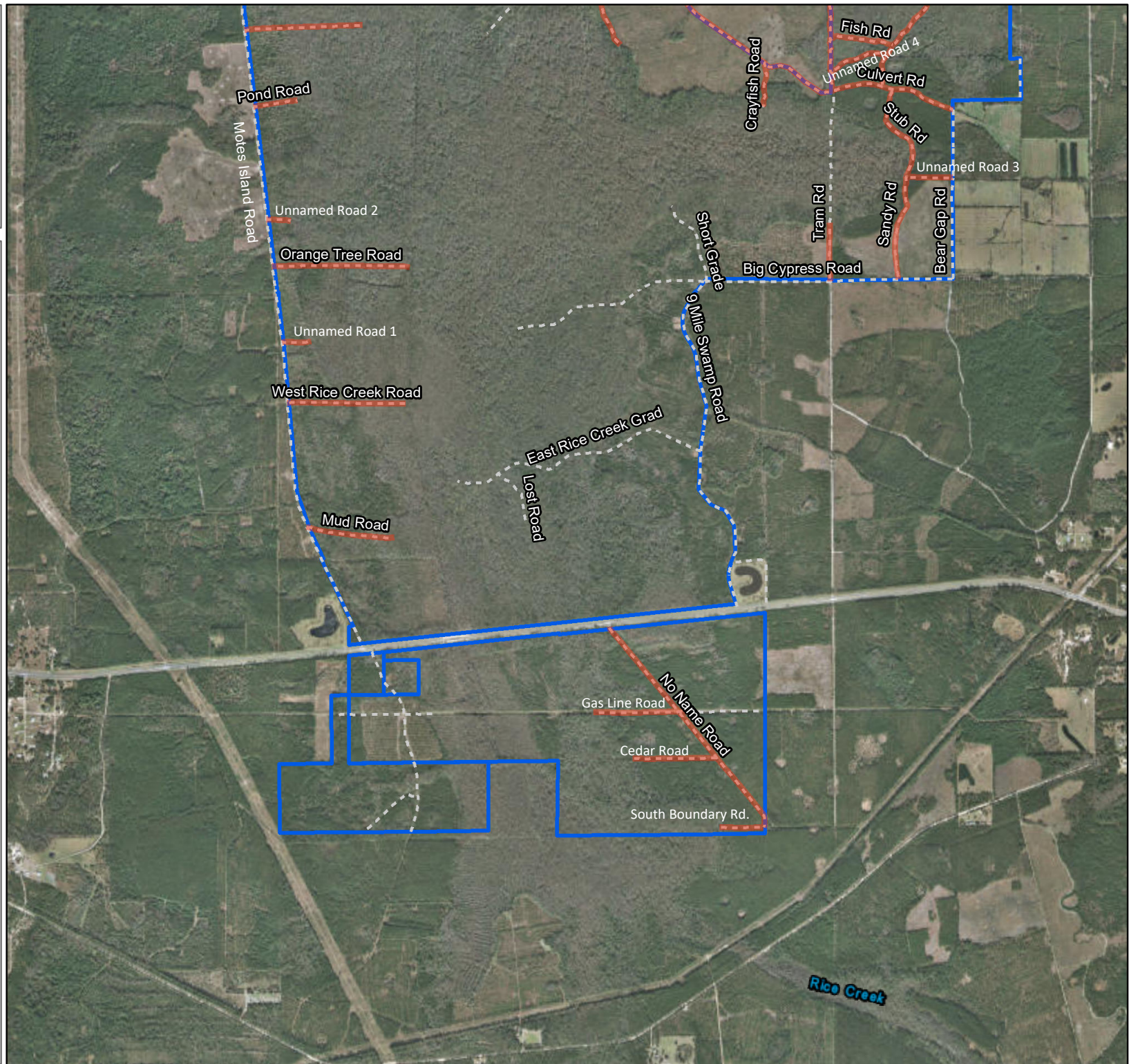
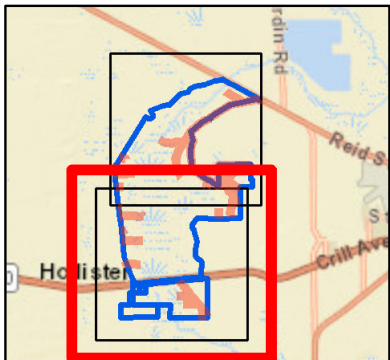


Legend

- Large Machine Mowing
- Secondary Road
- Management Area Boundary

Map Page
2 of 2

Map Location

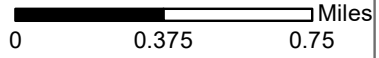


Silver Springs Forest Area

Large Machine Mowing

Levee/Roads	Map Page	Mowing Type	Frequency	Width Range (feet)	Average Width (feet)	Length (miles)	Acres (Calculated)
North/South Road 1	1, 2	Batwing	Modified Monthly	11'-20'	20	1.21	2.90
North/South Road 2	1, 2	Batwing	Modified Monthly	11'-20'	20	1.63	3.90
Unnamed Road 1	2	Batwing	Modified Monthly	11'-20'	17	0.54	1.10
Unnamed Road 2	2	Batwing	Modified Monthly	11'-20'	24	0.70	2.00
Unnamed Road 3	2	Batwing	Modified Monthly	11'-20'	18	0.54	1.20
Unnamed Road 4	2	Batwing	Modified Monthly	11'-20'	18	1.11	2.40
Unnamed Road 5	2	Batwing	Modified Monthly	11'-20'	16	1.59	3.10
Unnamed Road 6	2	Batwing	Modified Monthly	11'-20'	18	0.87	1.90
Unnamed Road 7	2	Batwing	Modified Monthly	11'-20'	28	1.57	5.30
Unnamed Road 8	2	Batwing	Modified Monthly	11'-20'	20	1.01	2.50
Unnamed Road 9	1	Batwing	Modified Monthly	11'-20'	17	0.40	0.80
Unnamed Road 10	1	Batwing	Modified Monthly	11'-20'	25	0.36	1.10
Unnamed Road 11	1	Batwing	Modified Monthly	11'-20'	18	0.97	2.10
Unnamed Road 12	1	Batwing	Modified Monthly	11'-20'	19	0.13	0.30
Unnamed Road 13	1	Batwing	Modified Monthly	11'-20'	23	1.14	3.20
Unnamed Road 14	1	Batwing	Modified Monthly	11'-20'	15	0.54	1.00
Unnamed Road 15	1	Batwing	Modified Monthly	11'-20'	20	0.84	2.00
Unnamed Road 16	1	Batwing	Modified Monthly	11'-20'	20	0.79	1.90
Unnamed Road 17	1	Batwing	Modified Monthly	11'-20'	19	0.65	1.50
Unnamed Road 18	1	Batwing	Modified Monthly	11'-20'	24	0.62	1.80
Unnamed Road 19	1	Batwing	Modified Monthly	11'-20'	20	0.55	1.30
Unnamed Road 20	1, 2	Batwing	Modified Monthly	11'-20'	28	2.41	8.20
Unnamed Road 21	1	Batwing	Modified Monthly	11'-20'	16	1.86	3.60
Unnamed Road 22	2	Batwing	Modified Monthly	11'-20'	18	0.93	2.00
Unnamed Road 23	1, 2	Batwing	Modified Monthly	11'-20'	18	1.23	2.70
Unnamed Road 24	1	Batwing	Modified Monthly	11'-20'	20	0.37	0.90
Total Large Machine Acres:							60.70

Silver Springs Forest
Conservation Area
Large Machine Mowing
September 2019



1:30,770

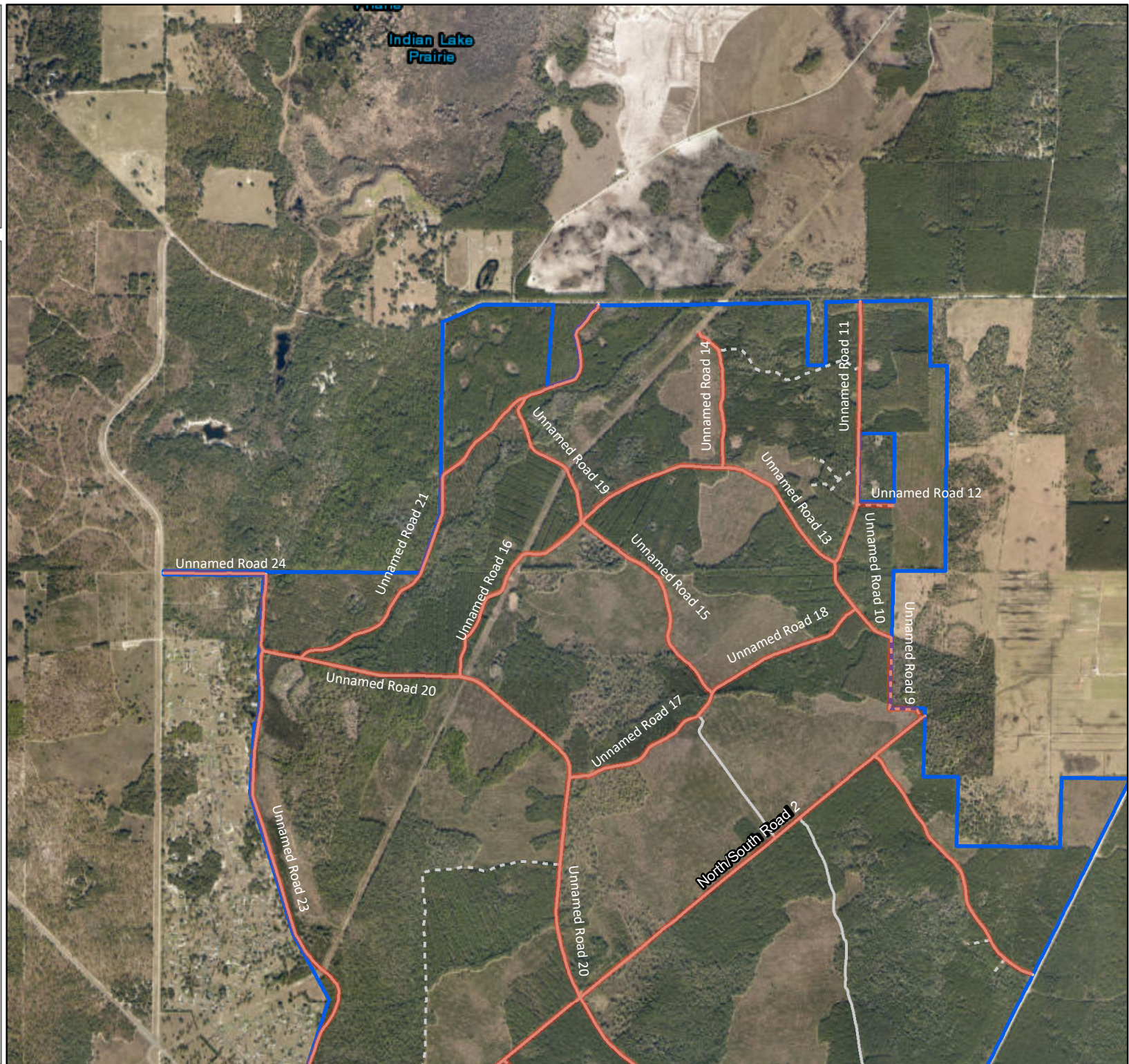
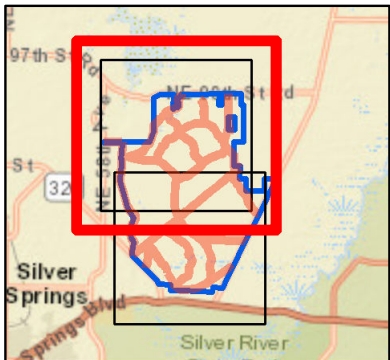


Legend

- Large Machine Mowing
- Primary Road
- Secondary Road
- Management Area Boundary

Map Page
1 of 2

Map Location



Indian Lake
Prairie

Unnamed Road 24

Unnamed Road 21

Unnamed Road 16

Unnamed Road 20

Unnamed Road 23

Unnamed Road 19

Unnamed Road 15

Unnamed Road 17

Unnamed Road 20

North/South Road 2

Unnamed Road 14

Unnamed Road 13

Unnamed Road 18

Unnamed Road 11

Unnamed Road 12

Unnamed Road 10

Unnamed Road 9





Silver Springs Forest
Conservation Area
Large Machine Mowing
September 2019

0 0.375 0.75 Miles



1:30,770

Legend

-  Large Machine Mowing
-  Primary Road
-  Secondary Road
-  Management Area Boundary

Map Page
2 of 2

Map Location

