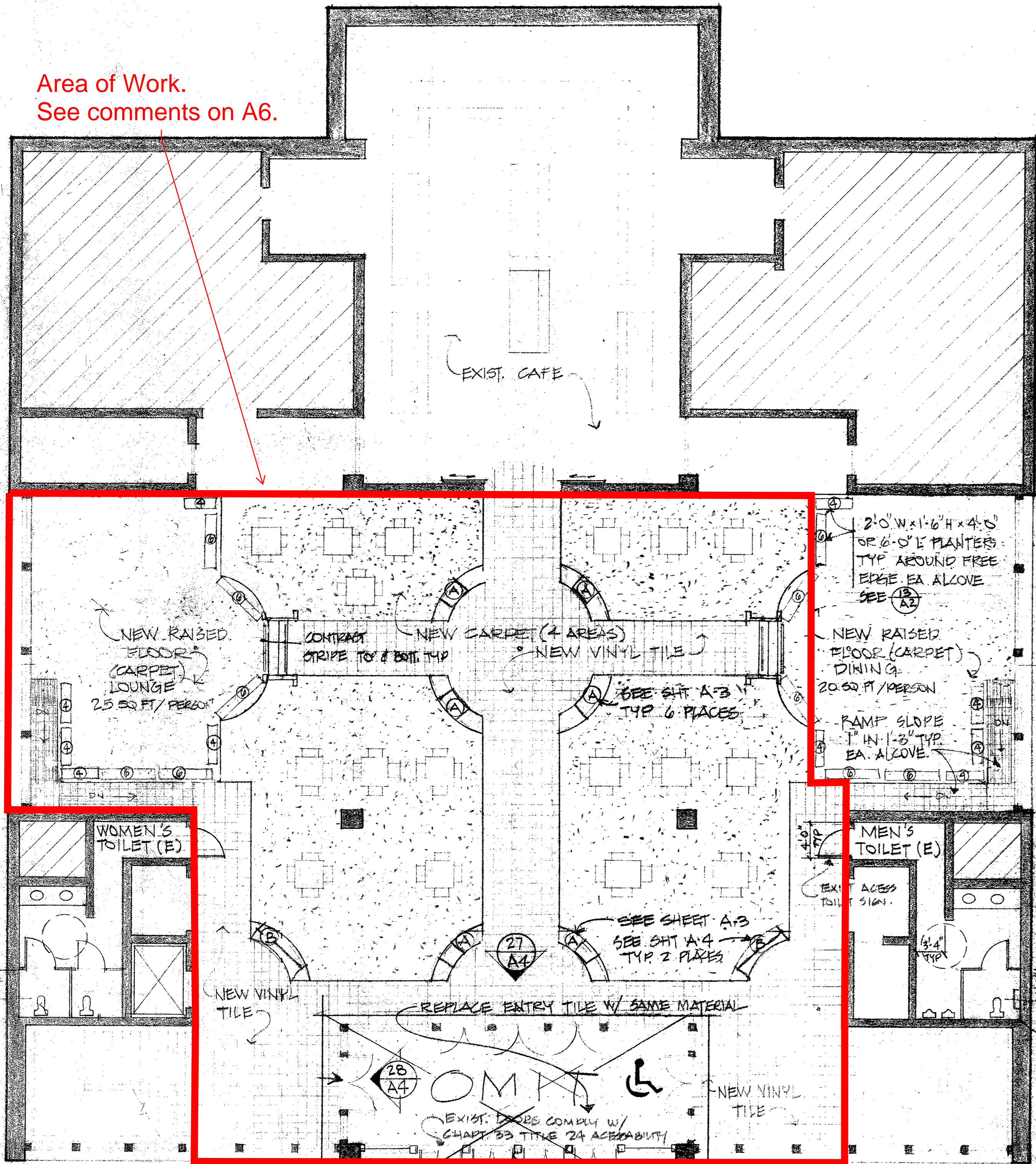


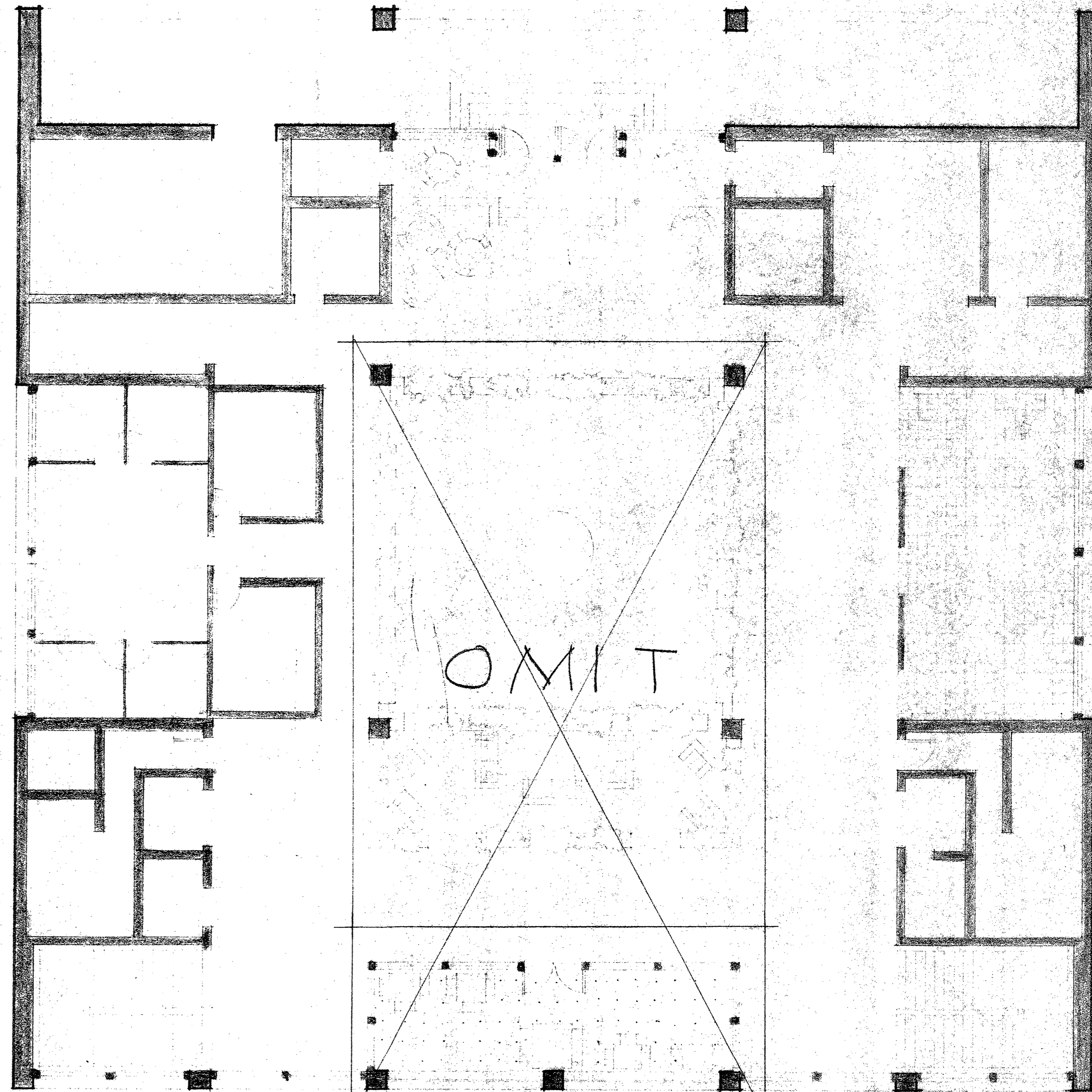
# FLOOR PLANS

Area of Work.  
See comments on A6.



MAIN FLOOR

SCALE 1/8" = 1'-0"



MEZZANINE

SCALE 1/8" = 1'-0"

NOTE:  
EXIST. EMERGENCY AND EXIT LIGHTING SYSTEM TO REMAIN IN SERVICE

STATE OF CALIFORNIA  
DEPARTMENT OF GENERAL SERVICES  
DEC 11 1991  
OFFICE OF THE STATE ARCHITECT  
STRUCTURAL SAFETY SECTION S.F.

OFFICE OF THE STATE ARCHITECT  
ACCESS COMPLIANCE SECTION  
56419 OCT-7'91  
APPLICATION: 228 N. 2nd Street  
No. 35

APPROVED  
Department of General Services  
Office of the State Architect  
OCT - 7 1991  
Structural Safety Section  
No. 56419  
Scale 1/8" = 1'-0"

CALIFORNIA STATE FIRE-MARSHAL  
APPROVED

APPROVAL OF THIS PLAN DOES NOT CONSTITUTE OR APPROVE ANY GUARANTEE OR WARRANTY FROM APPLICABLE REGULATIONS. FINAL OPERATIONAL PLANS MUST BE APPROVED BY THE ARCHITECT. SET OF APPROVED PLANS SHALL BE MAINTAINED AT THE PROJECT SITE AT ALL TIMES.

THOMAS LEE TURMAN  
ARCHITECT  
1718 Ninth Street  
Berkeley, California 94710  
(415) 857-3773

G. LEMLEY  
H. CHILDRESS

STUDENT UNION  
LANEY COLLEGE  
OAKLAND, CALIFORNIA

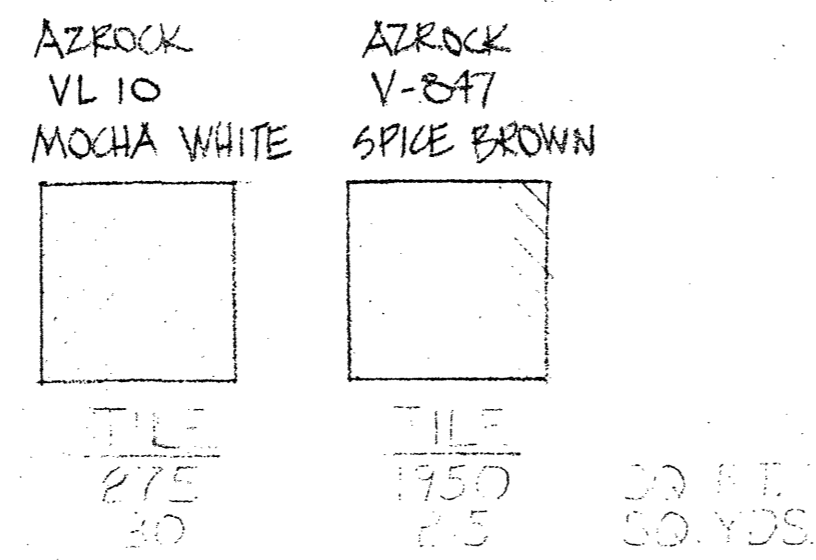
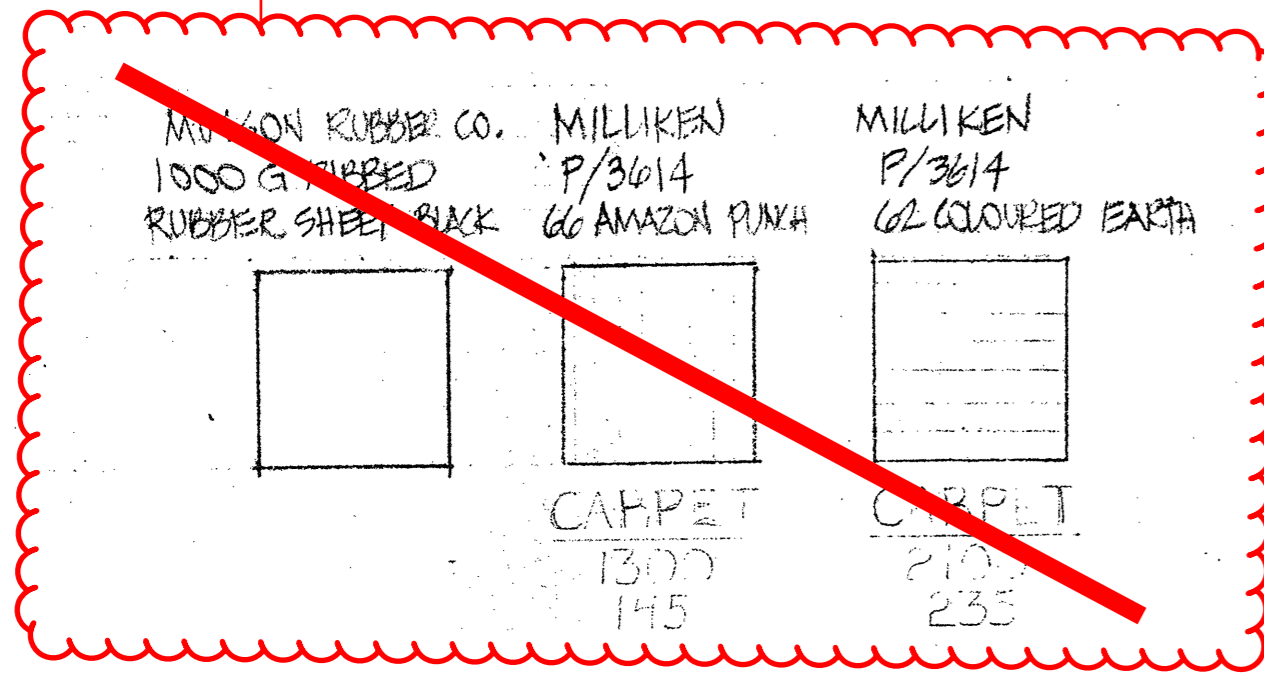
FLOOR PLANS  
MAIN FLOOR  
MEZZANINE

9/12/91

A1

FLOORING LEGEND

Current floor is not carpet.  
Current floor has 2 layers of VCT.



PAINT SCHEDULE  
SYMMETRICAL ABOUT C

WALLS A, B, C, G, H, I, COFFERED CEILING | LIGHT COLOR - TO BE SELECTED

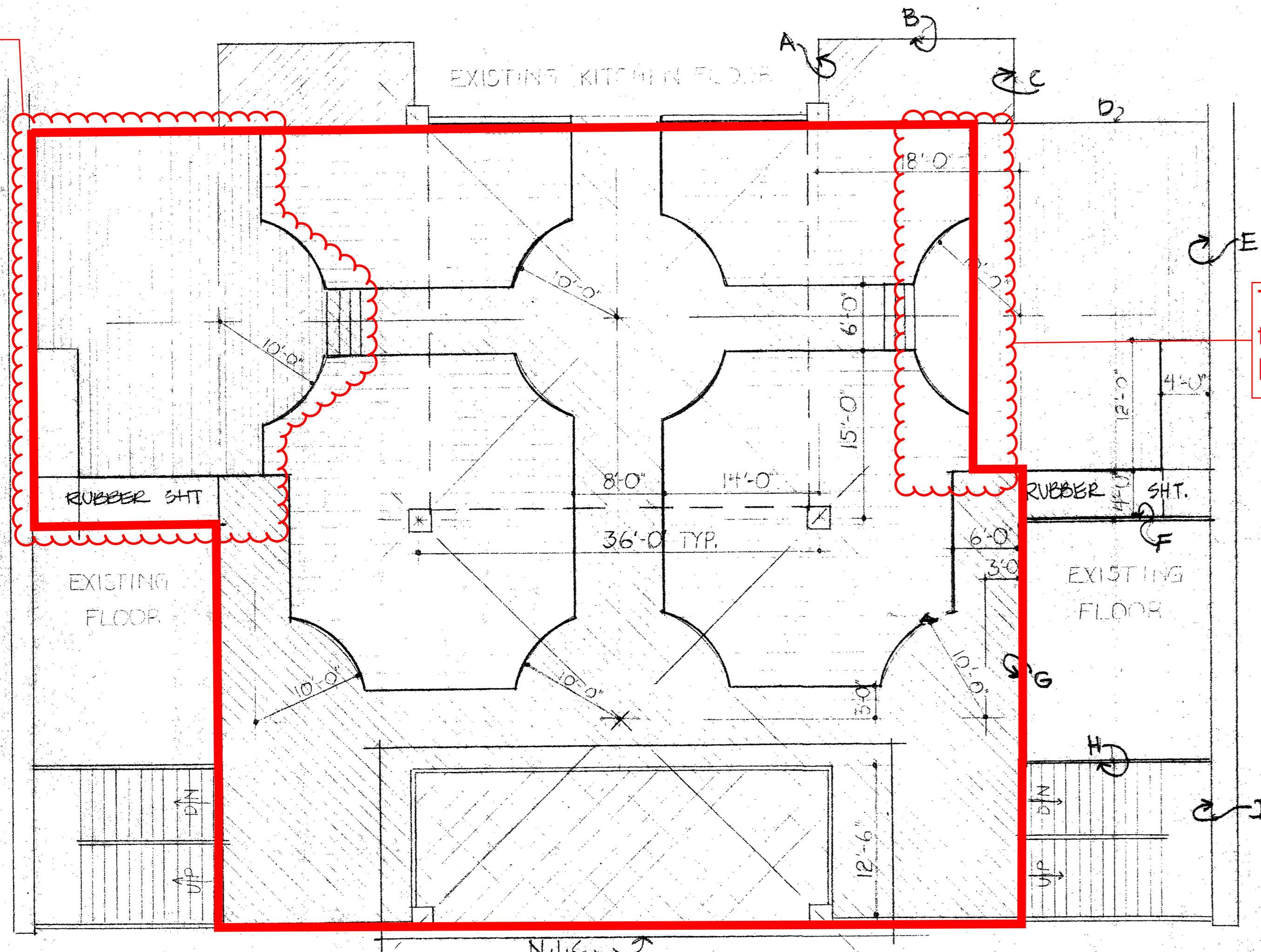
WALLS D, E, F FACE OF ALCOVE DROPPED CEILING ALL PILLARS, AIR DUCTS AND ATRIUM FACE | DARKER COLOR - TO BE SELECTED

COFFERED CEILING DUCTS SPRINKLER PIPES OTHER EQPT. ABOVE SUSPENDED CEILING PANELS | GREY

CASE 450 ENTRY ENCLOSURE | METAL STUDS - BLACK  
METAL GRATE - DEEP GREEN

N.I.C.

Existing Raised Floor to be Removed.



There is no raised bulb-out at this location. Reference Union Bank Branch Drawings A0.22

NOTE: FLOOR AND OTHER DIMENSIONS, MATERIALS, AND FINISHES ARE IDENTICAL FOR THE LEFT AND RIGHT SIDES OF THE ROOM

FLOOR & FINISH PLAN  
1/8" = 1'-0"

STATE OF CALIFORNIA  
DEPARTMENT OF GENERAL SERVICES  
DEC 11 1991  
OFFICE OF THE STATE ARCHITECT  
STRUCTURAL SAFETY SECTION

APPROVED  
Department of General Services  
Office of the State Architect  
OCT - 7 1991  
Structural Safety Section  
App. # 56419  
Checked By: S.H.

CALIFORNIA STATE FIRE MARSHAL

APPROVED

OFFICE OF THE STATE ARCHITECT  
ACCESS COMPLIANCE SECTION  
56419 OCT-7-91  
APPLICATION NO. 56419

APPROVAL OF THIS PLAN AND SPECIFICATIONS BY ARCHITECT AND APPROVAL BY ACCESS COMPLIANCE SECTION IS NECESSARY FOR THE ISSUANCE OF PERMITS. APPROVAL IS SUBJECT TO THE REQUIREMENTS OF THE CALIFORNIA BUILDING CODE AND THE CALIFORNIA STATE FIRE MARSHAL'S REGULATIONS.

df 10-1-91

THOMAS LEE TURMAN  
ARCHITECT  
3715 Ninth Street  
Berkeley, California 94710  
(415) 847-9773

GREGORY LEMLEY  
HERB CHILDRESS

STUDENT UNION  
LANEY COLLEGE  
OAKLAND, CALIFORNIA

FLOORING AND FINISHES

DRAWN BY: J.C.  
#

9/12/91

A6



**lx design group**  
 architecture • planning • interiors  
 San Antonio, Texas 78249  
 16010 Via Shawano  
 210.824.8825

**Union Bank Branch  
 at Laney College**  
 900 Fallon Street  
 Oakland, CA 94607

IDENTIFICATION STAMP  
 DIV. OF THE STATE ARCHITECT  
 OFFICE OF REGULATIONS SERVICES  
 APPL  
 AC \_\_\_ FLS \_\_\_ SS \_\_\_  
 FILE: \_\_\_\_\_  
 DATE: \_\_\_\_\_

No.	Description	Date

PROJECT NO.: 19179  
 PROJECT MGR: MR  
 ASSISTED BY: MA  
 DATE: 05/18/2020

LIFE SAFETY PLAN  
**A0.22**

OCCUPANT LOAD CALCULATION - FIRST FLOOR

ROOM NAME	ROOM AREA	FUNCTION OF SPACE	OCCUPANT LOAD FACTOR	OCCUPANT LOAD
TELLER	243 SF	BUSINESS	150 SF	2
CASH/IT	98 SF	BUSINESS	150 SF	1
PLATFORM	77 SF	BUSINESS	150 SF	1
EXPRESS BANKING	132 SF	BUSINESS	150 SF	1
LOBBY	161 SF	BUSINESS	150 SF	2
WOMENS TLT	211 SF	---	---	---
STORAGE	104 SF	STORAGE	300 SF	1
STAIR #3	415 SF	---	---	---
STORAGE	300 SF	STORAGE	300 SF	1
STORAGE	57 SF	STORAGE	300 SF	1
TRAY WASHING	427 SF	STORAGE	300 SF	2
MENS TLT	178 SF	---	---	---
JANITOR	106 SF	---	300 SF	1
SERVING	1947 SF	ASSEMBLY UNCONCENTRATED	15 SF	130
FOOD STORAGE	317 SF	STORAGE	300 SF	2
STORAGE	130 SF	STORAGE	300 SF	1
MAIN DINING AREA	5847 SF	ASSEMBLY UNCONCENTRATED	15 SF	390
TOTAL				536

LIFE SAFETY LEGEND:

SYMBOL	DESCRIPTION
	LENGTH OF TRAVEL TO EXIT
	BUILDING EXIT
	EXIT SIGN

Legend for occupancy load:

SYMBOL	DESCRIPTION
	OCCUPANCY
	ROOM NAME
	OCCUPANT LOAD FACTOR (CBC TABLE 1004.1.1)
	FLOOR AREA (SQ.FT)
	OCCUPANT LOAD

LIFE SAFETY GEN NOTES:

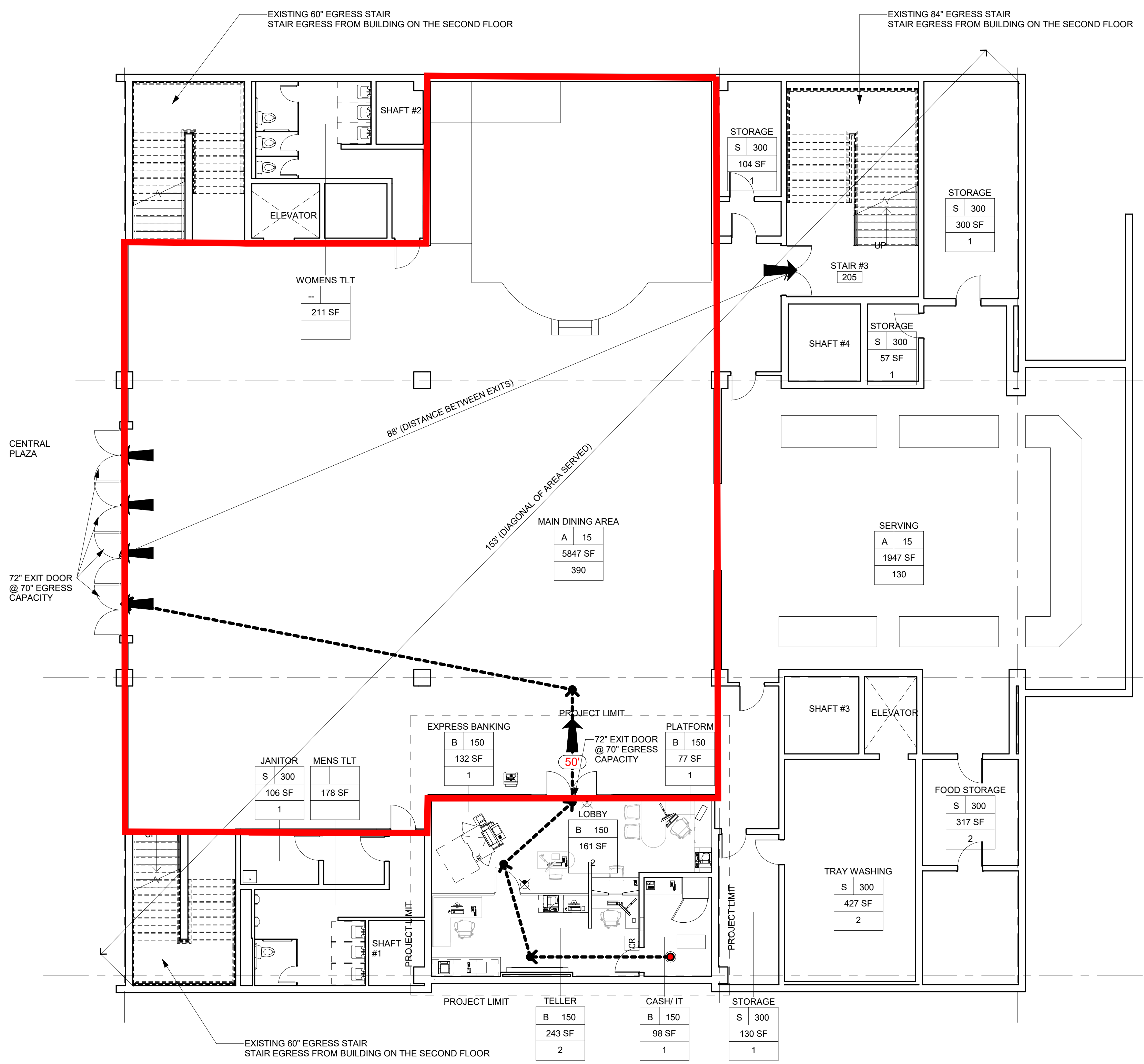
- PLANS ON THIS SHEET ARE FOR LIFE SAFETY AND EGRESS IDENTIFICATION ONLY. REFER TO FLOOR PLANS FOR WALL ASSEMBLY TAGS, TYPES, AND DETAIL.
- REFER TO MEP FOR EXIT SIGNAGE AND EMERGENCY LIGHTING.
- ALL FIRE WALLS, FIRE BARRIERS, FIRE PARTITIONS, SMOKE BARRIERS & SMOKE PARTITIONS SHALL BE EFFECTIVELY AND PERMANENTLY IDENTIFIED WITH SIGNS OR STENCILING PER CALIFORNIA BUILDING CODE 2019 SECTION 703.7.
- FEC LOCATIONS TO BE COORDINATED WITH FIRE MARSHALL. GENERAL CONTRACTOR TO PROVIDE AND INSTALL FEC'S PER FIRE MARSHALL AT NO ADDITIONAL COST TO THE CLIENT

NUMBER AND ARRANGEMENT OF EXITS

OCCUPANCY	Area	OCCUPANT LOAD	MINIMUM NUMBER OF EXITS (TABLE 1006.3.1)		TRAVEL DISTANCE (TABLE 1017.2)		ARRANGEMENT OF MEANS OF EGRESS (SECTION 1007.1.1)	
			REQ'D	SHOWN ON PLANS	ALLOWABLE TRAVEL DISTANCE	ACTUAL TRAVEL DISTANCE SHOWN ON PLAN	MIN. REQUIRED DISTANCE BETWEEN EXIT DOORS	ACTUAL DISTANCE SHOWN ON PLANS
FIRST FLOOR	13294 SF	536	3	5	300' - 0"	50' - 0"	51' - 0"	88' - 0"

EXIT WIDTH

Name	SF	LOAD (OCCUPANTS)	EGRESS WIDTH PER OCCUPANT		EXIT WIDTH (IN)			
			STAIR	LEVEL	REQUIRED		ACTUAL	
FIRST FLOOR	13,294	536	.2	.15	107	80	204	350



TRUE PLAN NORTH NORTH  
 1 LIFE SAFETY PLAN  
 1/8" = 1'-0"