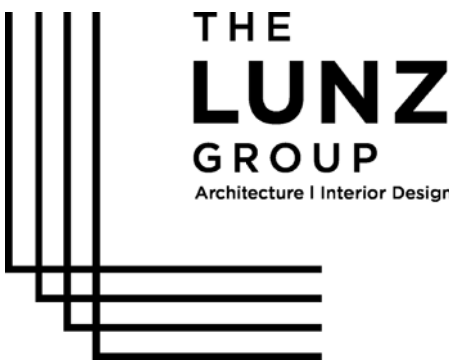


# Highlands County Remodeling for Probation and Parole Lease

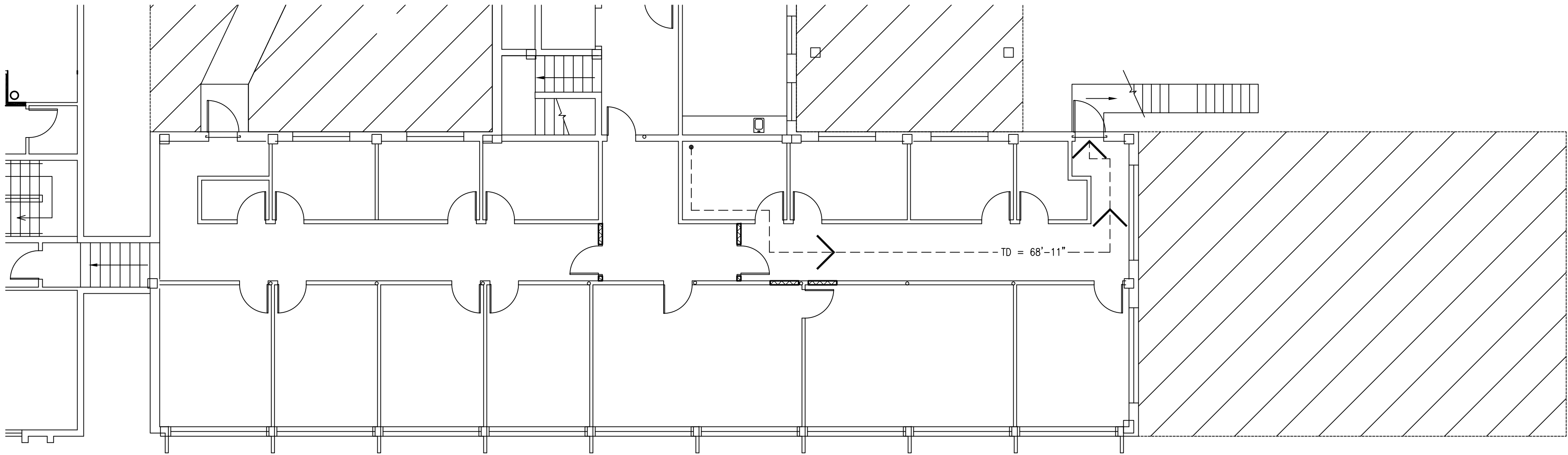
1728.02

434 Fernleaf  
Sebring, Florida

Issued for Approval 04.10.18  
Issued for Permit & Bid 04.20.18

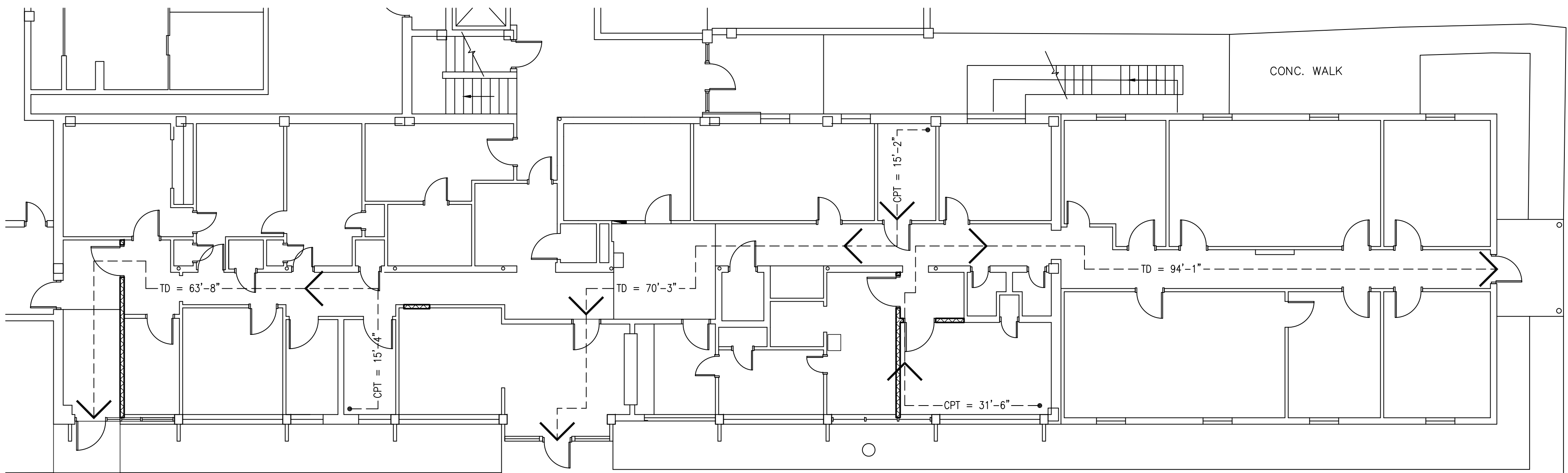


58 Lake Morton Drive  
Lakeland, FL 33801-5344  
p 863.682.1882  
f 863.687.6346  
lic. AAC001580  
www.lunz.com



Life Safety Second Floor Plan

1/8"=1'-0"  
0 4' 8'



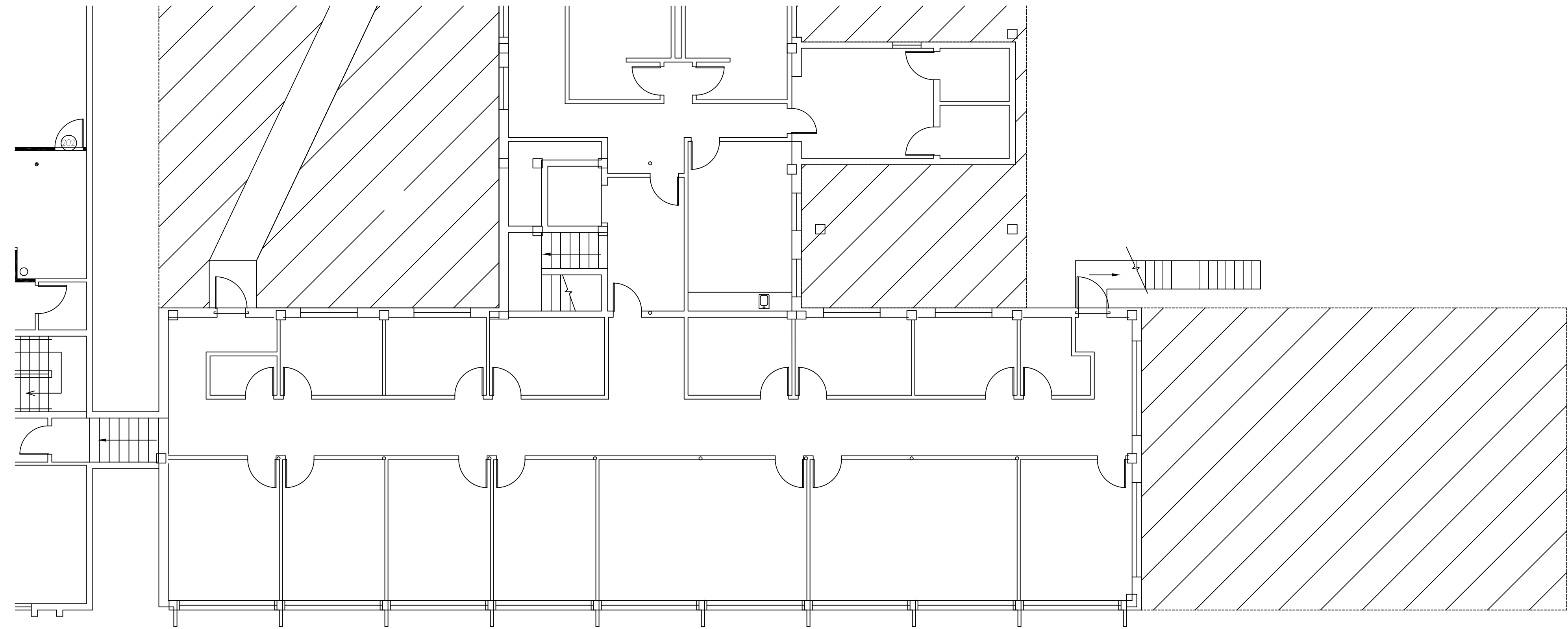
Life Safety First Floor Plan

1/8"=1'-0"  
0 4' 8'

LEGEND  
---> EXIT ROUTE  
CPT = COMMON PATH OF TRAVEL  
TD = TOTAL DISTANCE (INCLUDED CPT)

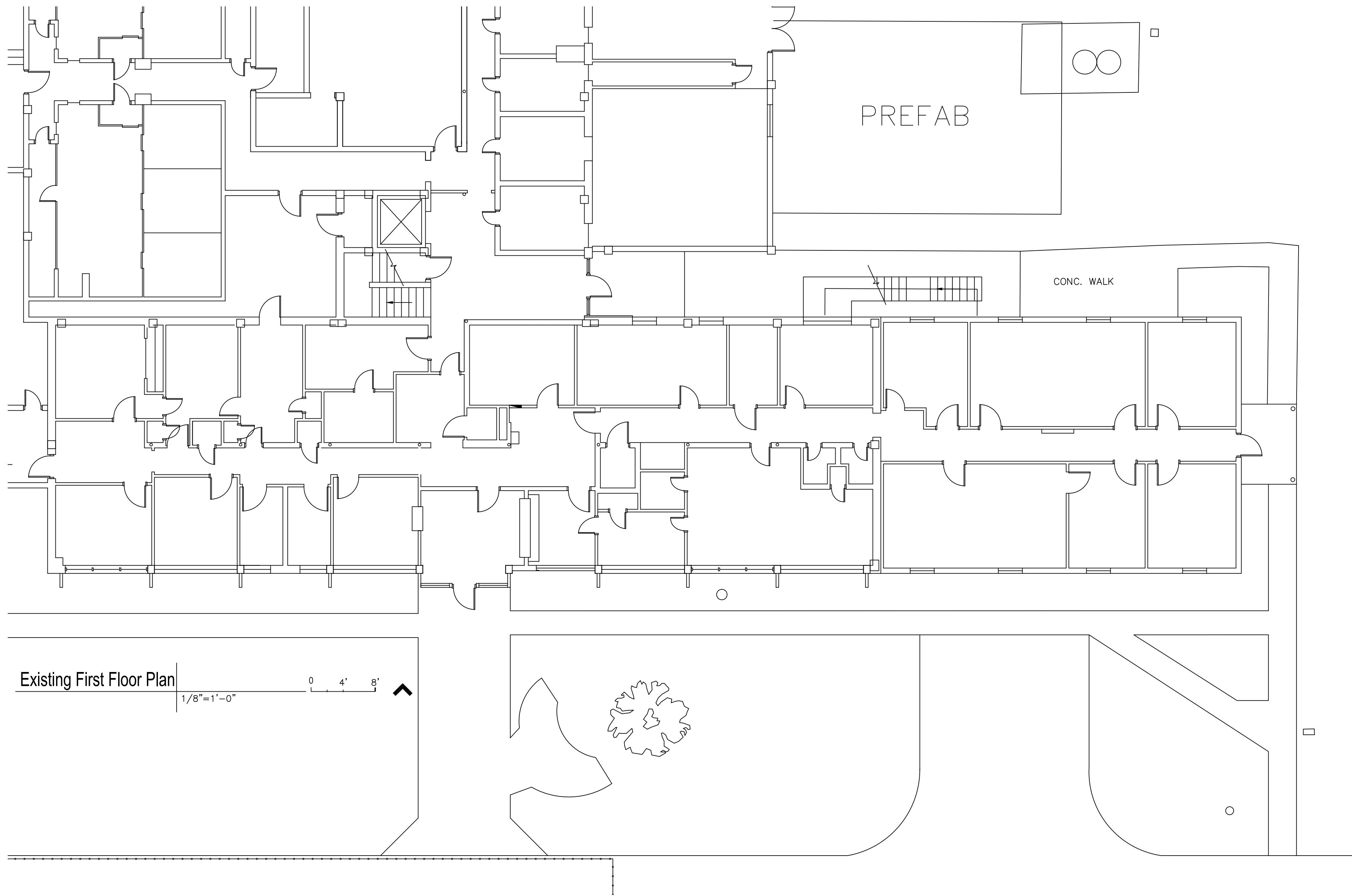
DRAWING INDEX		APPROVAL	PERMIT&BID	ISSUED	ISSUED	ISSUED
SHEET #	SHEET TITLE	04.10.18	04.20.18	00.00.00	00.00.00	00.00.00
A-CVR	Cover Sheet, Life Safety Plans	•	•			
Architectural						
A-101	Existing First & Second Floor Plans	•	•			
A-102	Demolition First & Second Floor Plans	•	•			
A-103	New First & Second Floor Plans	•	•			
A-110	Reflected Ceiling Plan & Millwork Elevations	•	•			
A-900	Specifications	•	•			
A-901	Specifications	•	•			





Existing Second Floor Plan

1/8"=1'-0"  
0 4' 8'



Existing First Floor Plan

1/8"=1'-0"  
0 4' 8'

Remodeling for Probation and Parole Lease

434 Fernleaf  
Sebring, Florida 33870

Existing First & Second Floor Plans

REVISION .....  
REVISION .....  
REVISION .....

ISSUED FOR: .....  
ISSUED FOR: .....  
ISSUED FOR PERMIT & BID: 04.20.18  
ISSUED FOR APPROVAL: 04.10.18

DRAWN BY: .....  
REVIEW BY: .....

THE LUNZ GROUP  
© COPYRIGHT 2017 ALL RIGHTS RESERVED

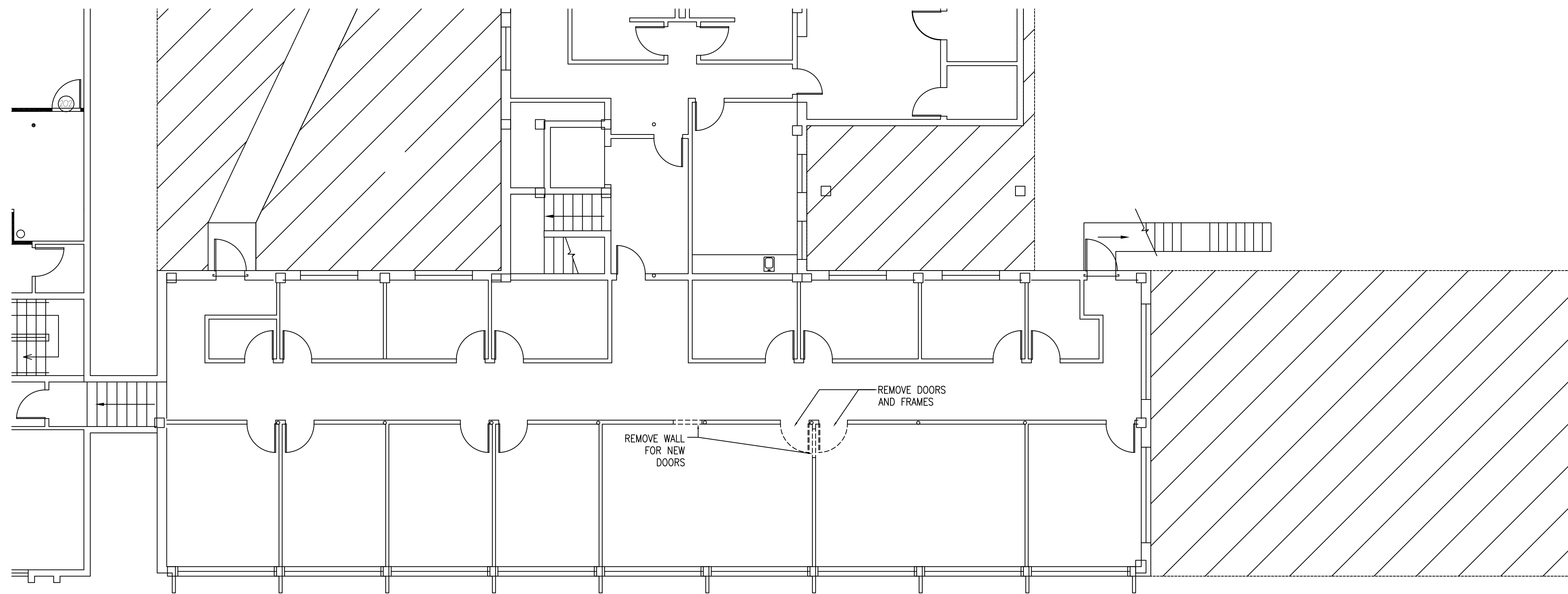
58 Lake Morton Drive  
Lakeland, FL 33801-5344  
p 863.682.1862  
f 863.687.6346  
lic. AAC001580

lunz.com

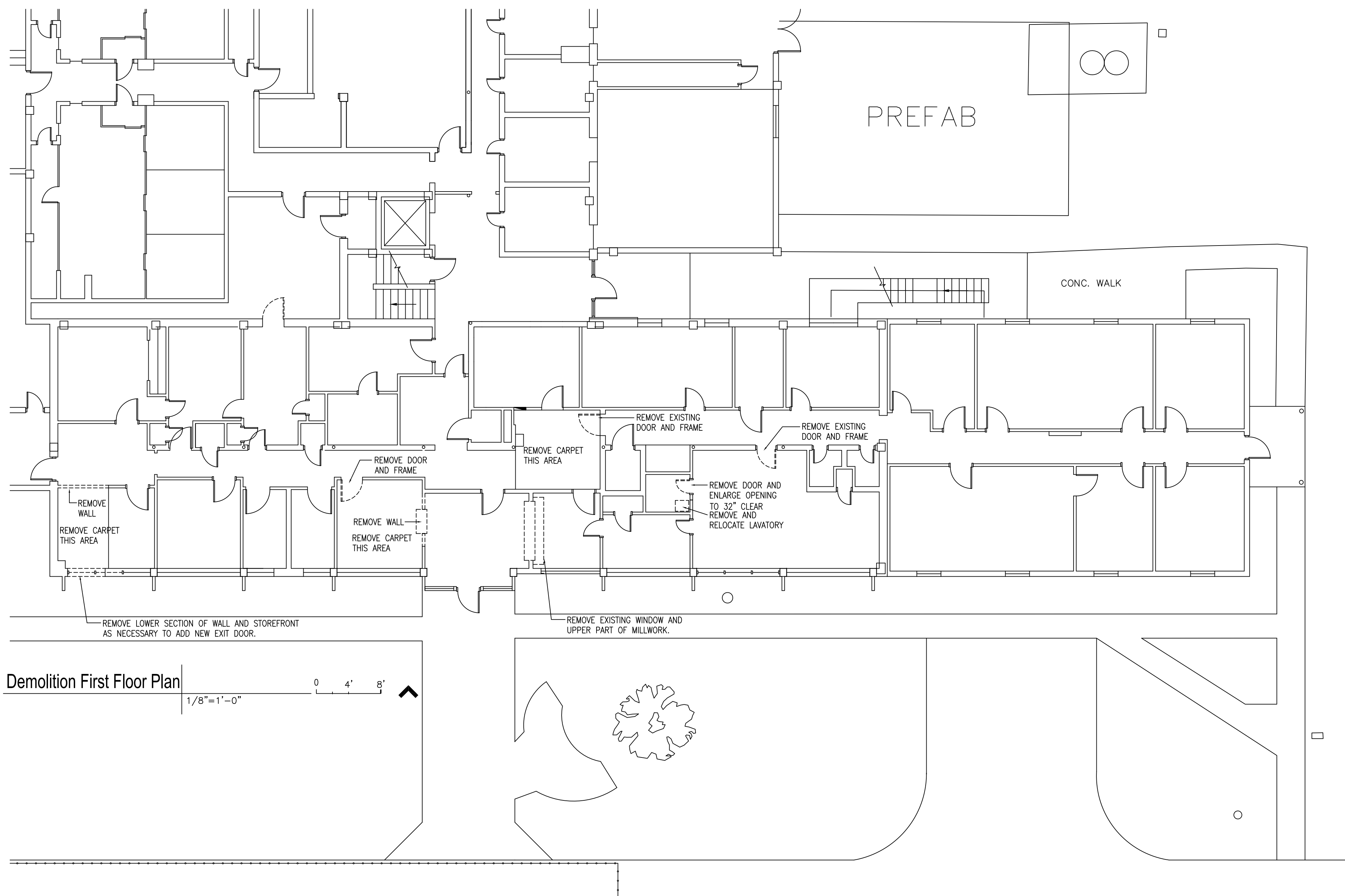
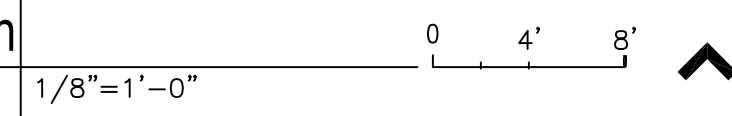
1728.02

A-101





### Demolition Second Floor Plan



# Remodeling for Probation and Parole Lease


Sebring, Florida 33870


## First & Second Floor Demolition Plans

## GENERAL NOTES

1. REMOVE INOPERABLE UNIT HEATERS WHERE REQUIRED TO INSTALL NEW CONSTRUCTION.
2. REMOVE STAINED CARPET AT LOBBY AND CORRIDOR.

REVISION  . . . . .

REVISION  . . . . .

REVISION  . . . . .

ISSUED FOR:	--
ISSUED FOR:	--
ISSUED FOR PERMIT & BID:	04.20.18
ISSUED FOR APPROVAL:	04.10.18

DRAWN BY: \_\_\_\_\_  
REVIEW BY: \_\_\_\_\_

THE LUNZ GROUP  
© COPYRIGHT 2017 ALL RIGHTS RESERVED

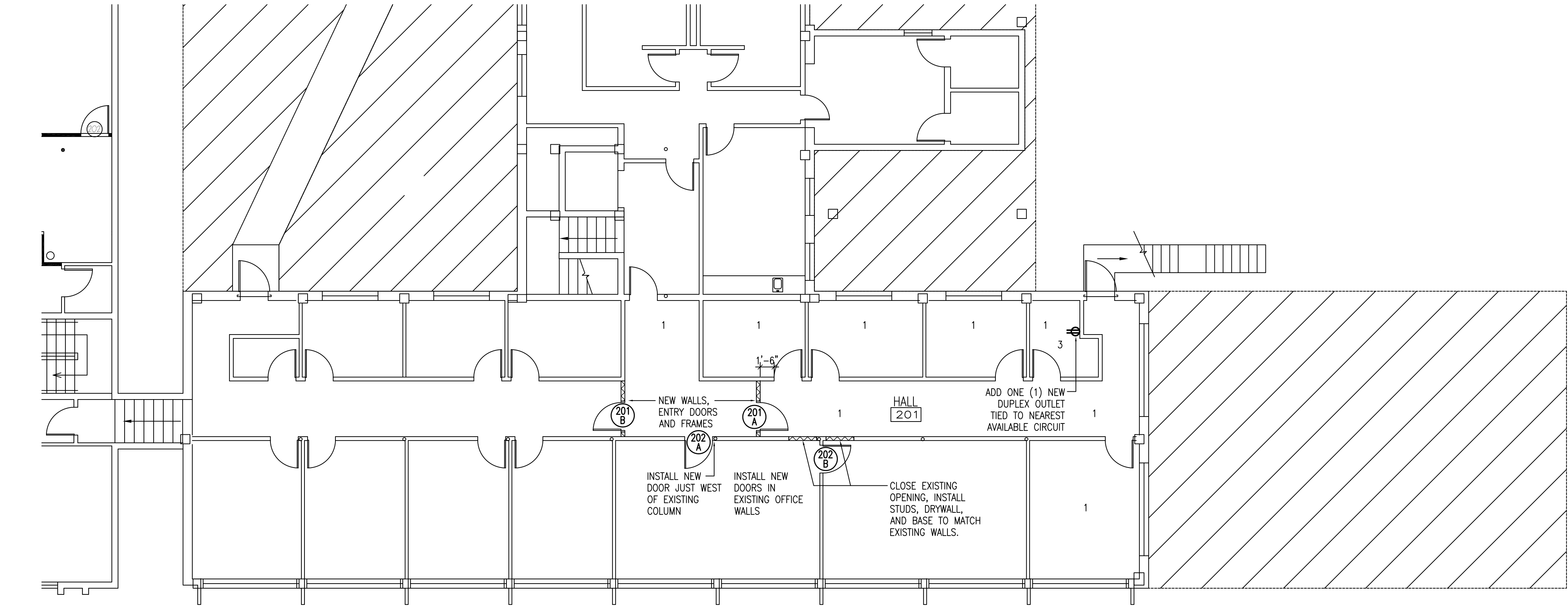
58 Lake Morton Drive  
Lakeland, FL 33801-5344  
p 863.682.1882  
f 863.687.6346  
lic. AAC001580

lunz.com

1728.02

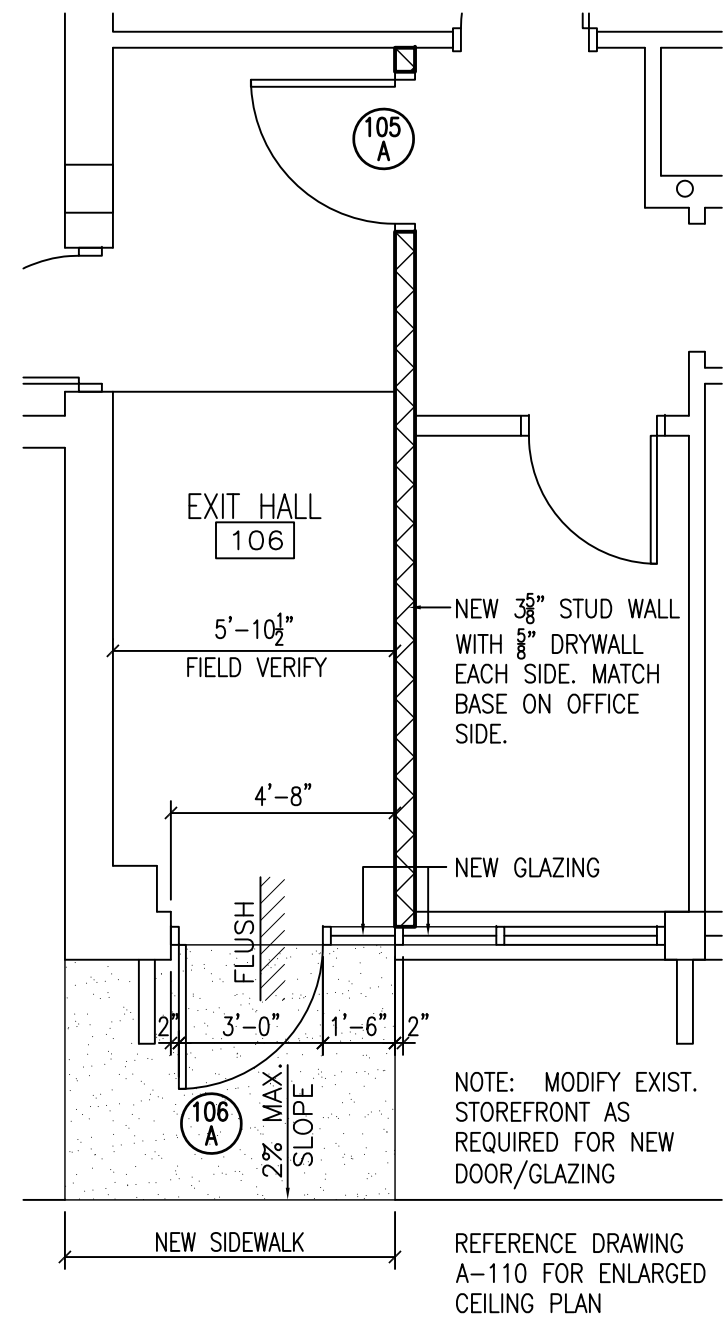
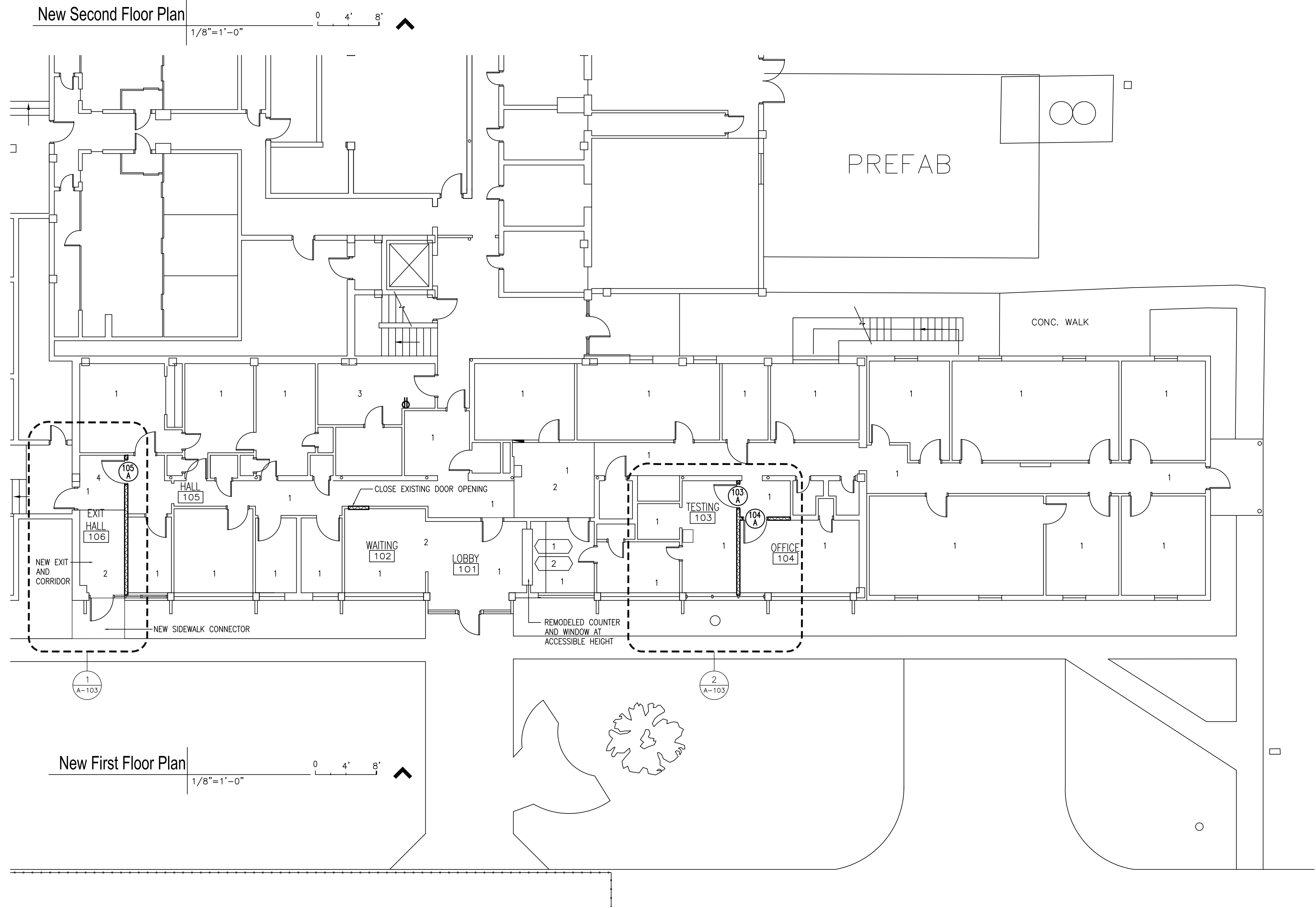
A-102



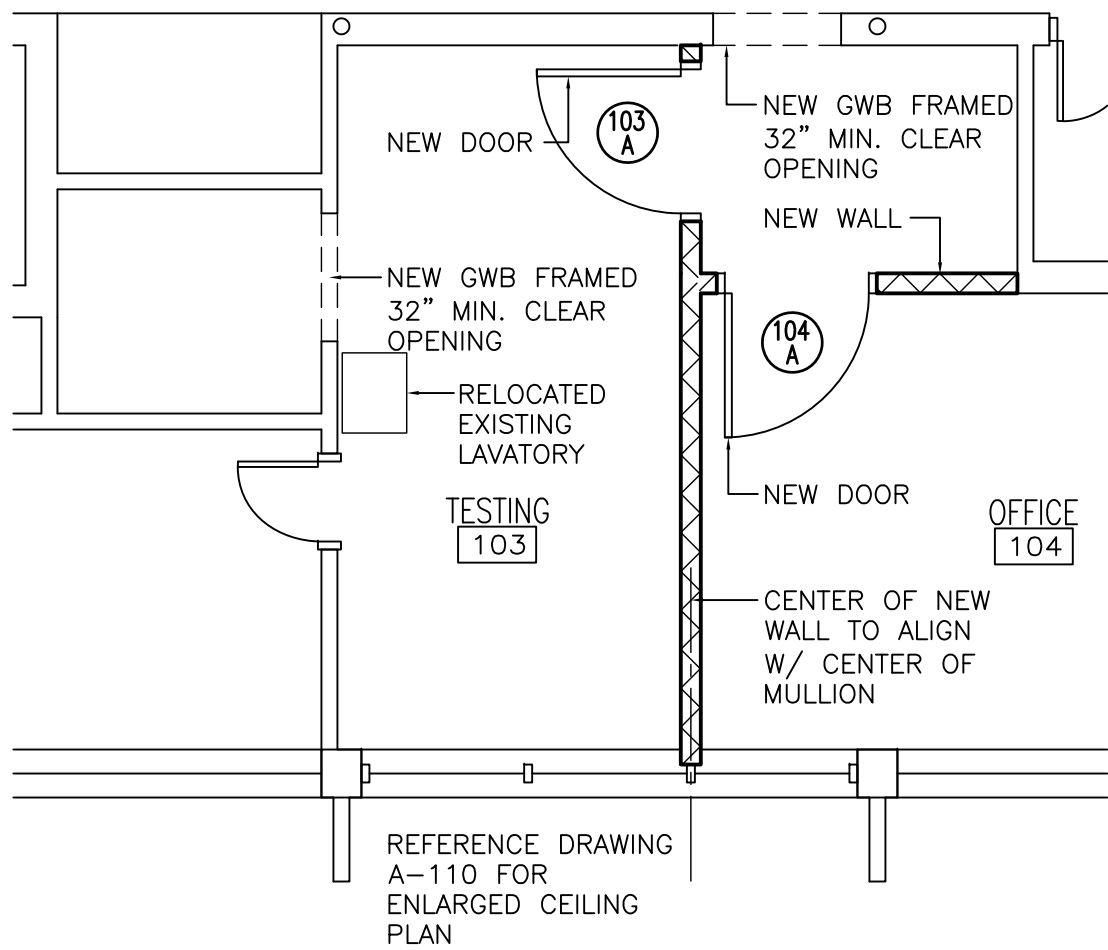


- SHEET NOTES
1. SPACES TO BE PAINTED.
  2. NEW VCT AND BASE TO MATCH EXISTING.
  3. ADD ONE (1) NEW DUPLEX OUTLET IN EXISTING DATA ROOM. LOCATION AS CHOSEN BY OWNER. TIED OUTLET TO NEAREST AVAILABLE CIRCUIT.
  4. EXISTING VCT TO REMAIN.

- GENERAL NOTES
1. INSTALL NEW FLOORING IN LOBBY, WAITING AND EXIT HALL.
  2. IN ALL AREAS THAT ARE CLOSING EXISTING OPENINGS, WALLS ARE TO BE MATCHED IN THICKNESS. WALL TEXTURE AND BASE MATERIALS.
  3. EXISTING OPENINGS THAT ARE BEING CLOSED UP ARE TO BE FRAMED WITH 2X4'S OR 2X6'S MATCHED TO WALL THICKNESS AFTER 1 LAYER OF 5/8" SHEET ROCK IS APPLIED TO EACH SIDE.

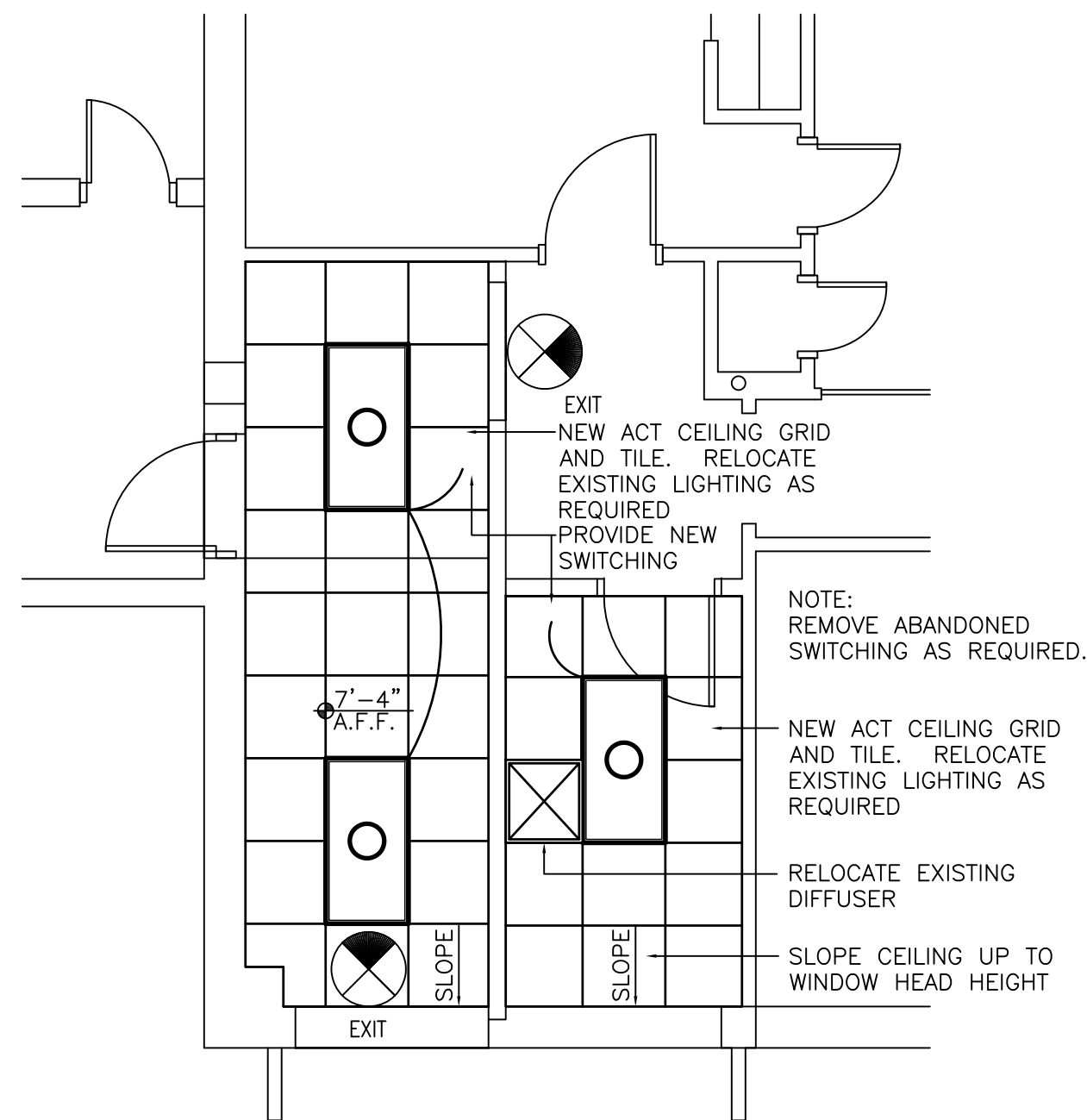


1  
A-103  
Enlarged Exit Hall Plan  
1/4"=1'-0"

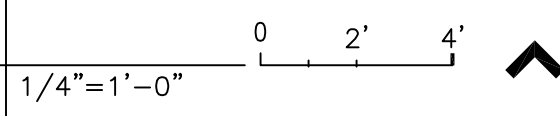


2  
A-103  
Enlarged Testing Area Plan  
1/4"=1'-0"

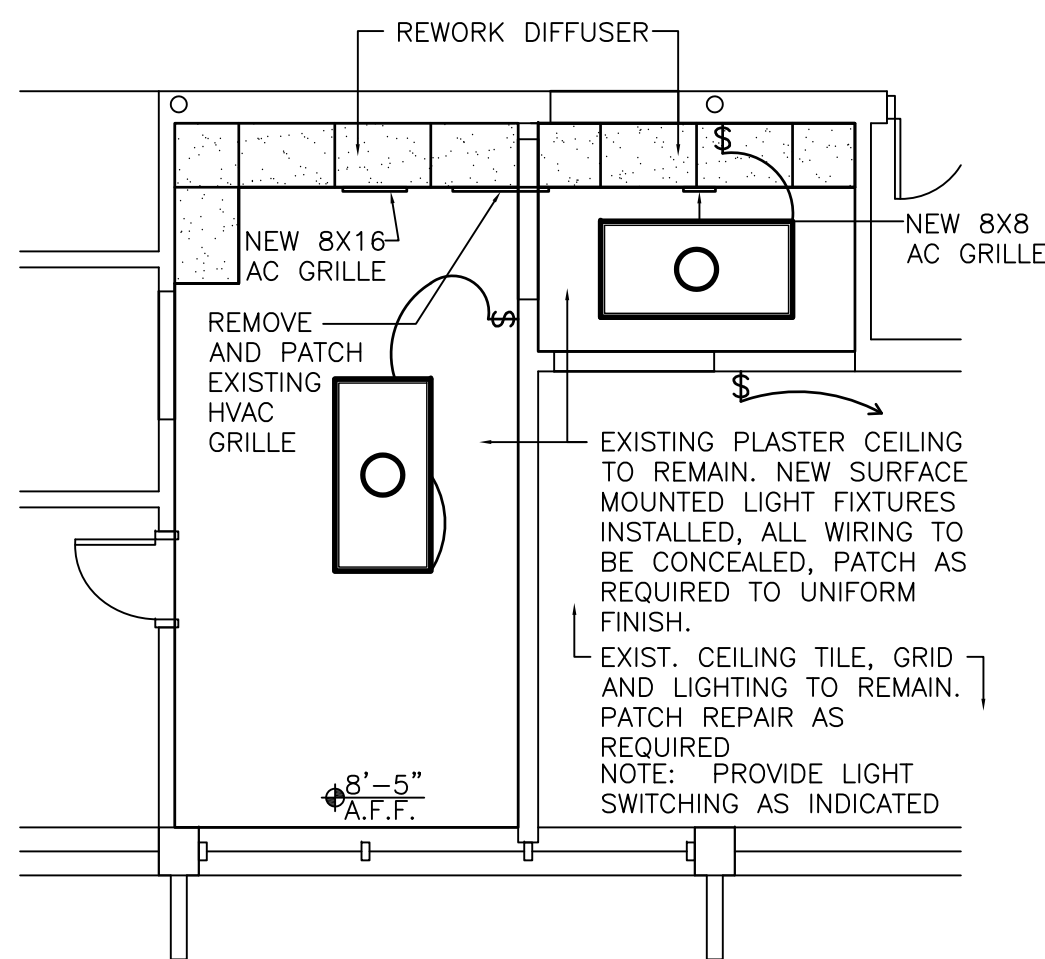




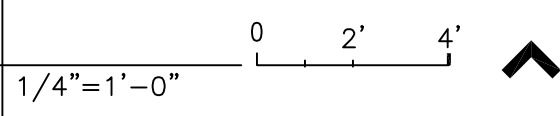
### New Exit Hall Reflected Ceiling Plan



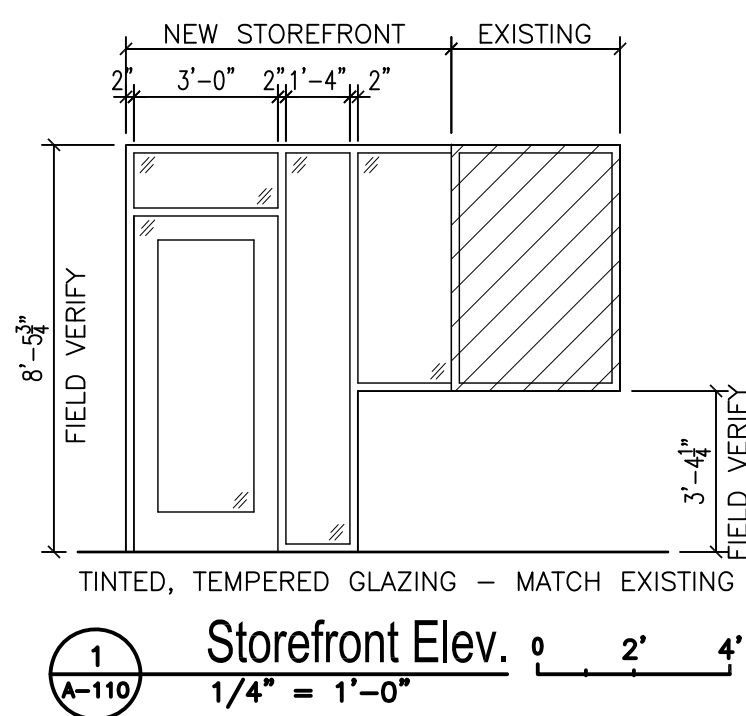
- NOTES
1. RECESSED LIGHTS: PHILLIPS DAY-BRIGHT 2FGG38L840-4-DS-UNV LED RECESSED 2X4.
  2. SURFACE LIGHTS: LITHONIA 2TLX4 2X4 LED SURFACE MOUNTED FIXTURE.
  3. TIE LIGHTS TO NEAREST AVAILABLE LIGHTING CIRCUIT. LIGHTS TO BE ALWAYS ON.
  4. EXIT LIGHT/EMERGENCY LIGHT ULINE H6509 RED-LED EMERGENCY LIGHT WITH 1½ HR BATTERY LIFE. TIE TO AVAILABLE CIRCUIT.



## New Testing Area Ceiling Plan



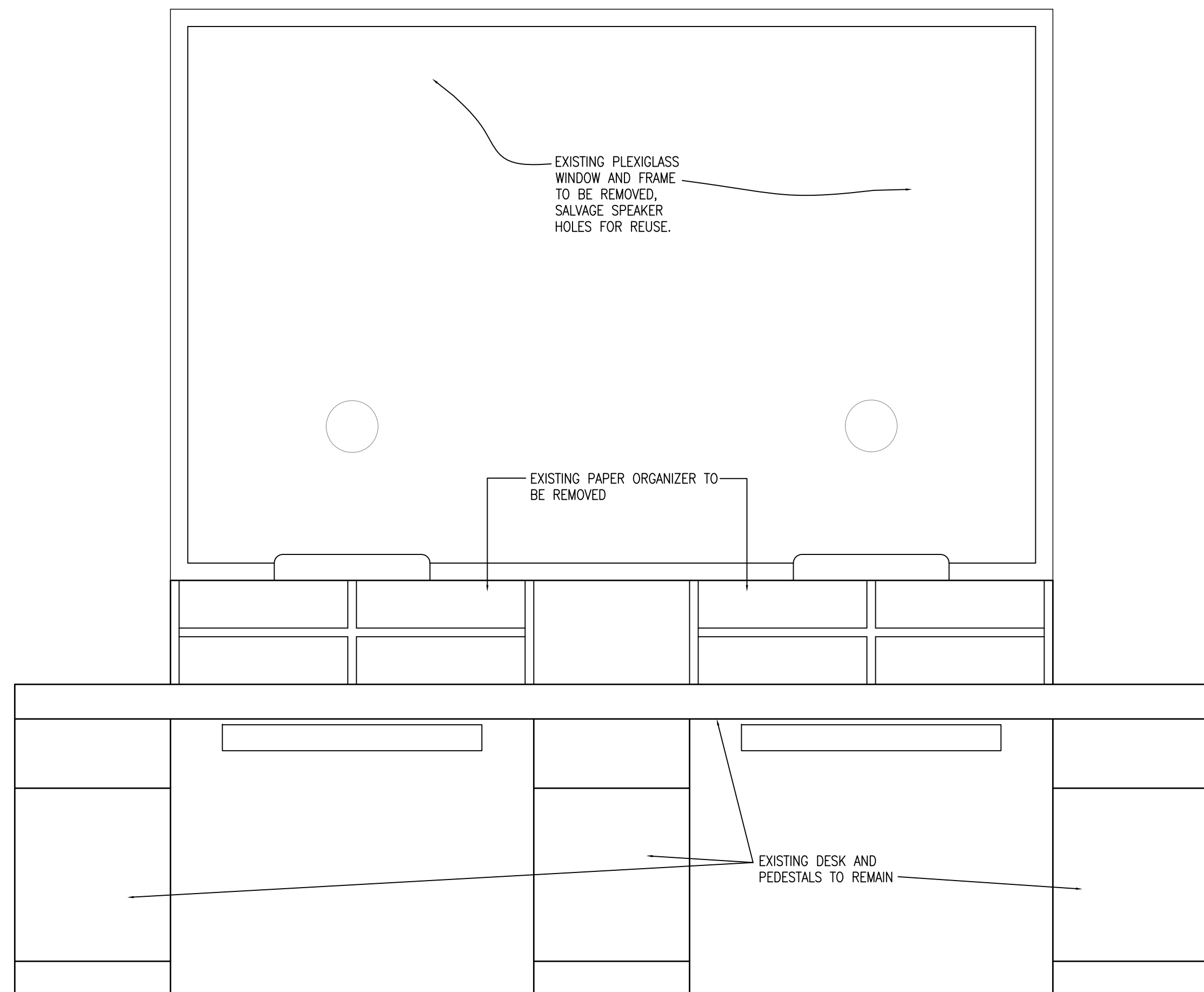
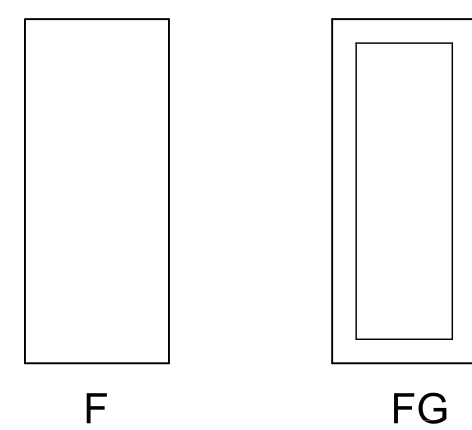
Door and Frame Schedule																		
Door No.	DOORS										FRAME					FIRE RATING LABEL	Hardware	Notes
	SIZE			MATL	ELEV	Glazing	FINISH	LOUVER		MATL	ELEV	FINISH	DETAIL					
	WIDTH	HGT	THK					WD	HGT				HEAD	JAMB	SILL			
103A	3'-0"	7'-0"	1 3/4"	W	F	---	P	---	---	HM	F1	PAINT	---	---	---	---	1	---
104A	3'-0"	7'-0"	1 3/4"	W	F	---	P	---	---	HM	F1	PAINT	---	---	---	---	1	---
105A	3'-0"	7'-0"	1 3/4"	W	F	---	P	---	---	HM	F1	PAINT	---	---	---	C	2	---
106A	3'-0"	7'-0"	2"	AL	FG	Y	ANO	---	---	AL	F1	ANO	---	---	---	---	SEE SPEC	---
201A	3'-0"	7'-0"	1 3/4"	W	F	---	P	---	---	HM	F1	PAINT	---	---	---	C	1	---
201B	3'-0"	7'-0"	1 3/4"	W	F	---	P	---	---	HM	F1	PAINT	---	---	---	C	1	---
202A	3'-0"	7'-0"	1 3/4"	W	F	---	P	---	---	HM	F1	PAINT	---	---	---	C	1	---
202B	3'-0"	7'-0"	1 3/4"	W	F	---	P	---	---	HM	F1	PAINT	---	---	---	---	1	NO CLOSER
ABBREVIATIONS:																		
W = WOOD																		
AL = ALUMINUM																		
HM = HOLLOW METAL																		
P = PAINT																		
ANO = ANODIZED TO MATCH EXISTING STOREFRONT																		



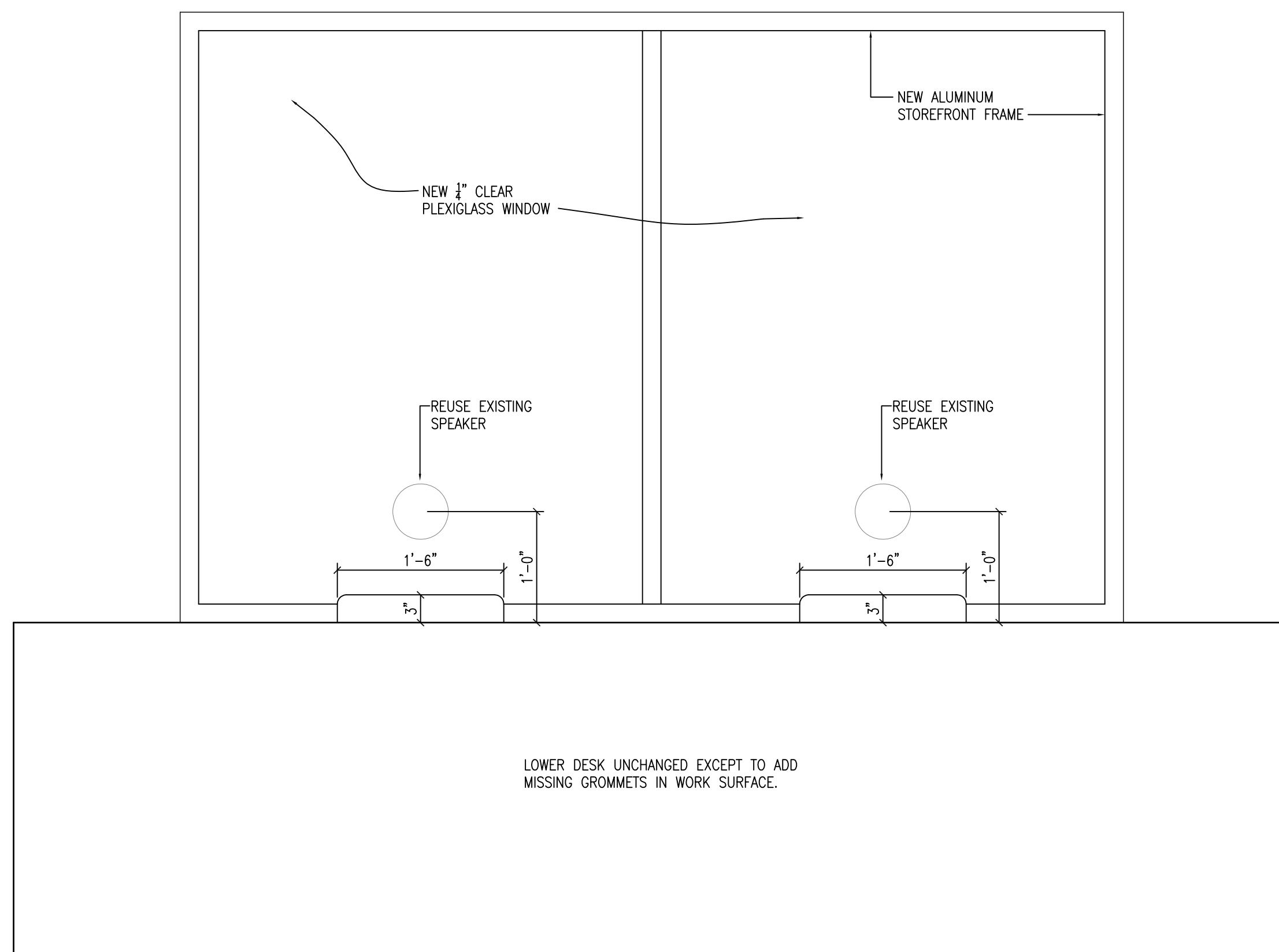
## DOOR HARDWARE SCHEDULE

- SET 1
- |   |          |                       |
|---|----------|-----------------------|
| 1 | 1/2 PAIR | HINGES 4X4            |
| 1 |          | LOCKSET ND50PD ATHENS |
| 1 |          | CLOSER LCN 1461       |
| 3 |          | SILENCERS             |
| 1 |          | WALL STOP             |
- SET 2
- |   |          |                       |
|---|----------|-----------------------|
| 1 | 1/2 PAIR | HINGES 4X4            |
| 1 |          | LOCKSET ND60PD ATHENS |
| 1 |          | CLOSER LCN 1461       |
| 3 |          | SILENCERS             |
| 1 |          | WALL STOP             |

## DOOR ELEVATIONS



Existing Reception Desk



Revised Reception Desk



NOTE: FIELD VERIFY ALL DIMENSIONS



SPECIFICATIONS

DIVISION 1 – GENERAL REQUIREMENTS

NONE SPECIFIED

DIVISION 2 – SITEWORK

See drawing A-103

DIVISION 3 – CONCRETE

1. SCOPE

Provide miscellaneous concrete for floor slab repair.

2. MATERIALS

A. Concrete: Min 3000PSI mix

3. FINISH

A. Light broom for exterior work.

DIVISION 4 – MASONRY

NONE SPECIFIED

DIVISION 5 – METALS

NONE SPECIFIED

DIVISION 6 – WOOD AND PLASTIC

06 10 00 ROUGH CARPENTRY

1. SCOPE

A. Provide all blocking, grounds, plates, deadwood, framing and other woodwork as indicated on Drawings or as needed for a complete installation.

2. MATERIALS

A. Fasteners: All woodwork shall be secured with fasteners of size, spacing and number to develop adequate strength for intended use but in no event less than as indicated in Florida Building Code, Fastening Schedule.

B. Pressure treat all wood in contact with masonry, concrete, or exposed to weather.

C. Moisture content, maximum 19%.

D. Grades and species shall be No. 2 Southern Yellow Pine for blocking and framing. Plywood shall be APA exterior rated sheathing of thickness indicated on drawings.

3. WORKMANSHIP

A. Receive, inspect and store all materials.

B. Framing lumber, timber and other rough work shall be properly framed, closely fitted, accurately set to required lines and levels. Special framing or construction not explicitly shown or specified, shall be provided as required to complete the work. Structural members shall provide full contact at all bearing surfaces.

C. Rough carpentry necessary for the installation of work of other sections shall be carefully coordinated. Such work shall be cut, installed and/or altered to accommodate work of those sections.

D. Provide permanent grounds as required for the installation of the finishes, furnish nailing strips, furring and blocking.

E. Provide all protective barricades, barriers and all temporary scaffolding, shoring and bracing as required for safe completion of the work.

F. Contractor shall provide all temporary enclosures and protection of openings and include security hardware.

06 41 00 WOOD AND PLASTIC CABINETS

1. SCOPE

A. Provide wood and plastic cabinets and related work as indicated on Drawings.

a. All cabinets shall be flush overlay construction as defined by A.W.I. unless shown otherwise on Drawings.

2. QUALITY ASSURANCE

A. Workmanship shall meet or exceed Custom Grade quality standards of Architectural Woodwork Institute for plastic laminate or transparent finish.

3. INSTALLATION

A. Cabinets shall be set straight, plumb, and level. Cabinets shall be shimmed and set minimum of 1/8", maximum of 1/4" away from adjacent walls and securely anchored. All exposed joints between cabinets and walls shall be caulked.

B. Fasteners at backs of open cabinets and shelf units shall be chrome plated, round head screws, uniformly spaced.

C. Wall supported cabinets shall be fastened to walls to support the cabinet when fully loaded with 40 lbs. per cubic foot of load.

06 46 00 FINISHED CARPENTRY

1. SCOPE

A. Supply and install complete finish Carpentry work as shown on the drawings and as specified herein.

2. MEASUREMENTS

A. Verify all dimensions shown on drawings by taking field measurements; proper fit and attachment of all parts is required.

B. Coordinate work with all other trades as required to complete work to satisfaction of Project manager.

3. DELIVERY AND STORAGE

A. Deliver all materials under protective cover and store within dry enclosed area.

4. GENERAL REQUIREMENTS: Following standards apply to work of this section except where more stringent requirements are specified herein:

A. Architectural Woodwork Institute "Quality Standards".  
B. Western Wood Products Association Manual.  
C. American Wood Preservers' Association Specifications.

5. FINISH CARPENTRY INSTALLATION:

A. Use only hot-dipped galvanized or aluminum finish or casing nails. Set nails for putty stopping in surfaced members. Hammer marks not acceptable on any exposed finished surface and may be cause for rejection of work by Project Manager.

B. Make all end splices exposed in finished members bevel splices and not square butted. Install members in as long lengths as possible.

C. Install work to details shown, plumb, level and to line and securely anchored. Make scribes where required accurate. Miter corners of trim.

D. Provide and install other miscellaneous millwork items and related work required to complete work of this section.

E. Prepare all woodwork installed hereunder by cleaning and sanding as required to receive finishes specified in section PAINTING AND FINISHING.

6. CLEAN-UP

A. Remove debris and leave areas neat and clean.  
B. Leave finish work ready for painting.

DIVISION 7 – THERMAL AND MOISTURE PROTECTION

NONE SPECIFIED

DIVISION 8 – DOORS AND WINDOWS

08 11 00 HOLLOW METAL DOORS & FRAMES

1. SCOPE

A. Provide hollow metal, doors & frames, closure plates and related work as indicated on Drawings.

2. QUALITY ASSURANCE

A. Provide hollow metal doors & frames mfd. by single firm specializing in production of this type of work.

B. Manufacturers:

1. Allied Steel Products.  
2. Ceco Corp.  
3. Republic Steel Corp.  
4. Steelcraft Mfg. Co.  
5. Approved equal.

3. METAL FRAMES

A. Provide metal frames for doors and other openings of size and profile as shown on Drawings and complying with S.D.I. 100 for minimum materials and construction requirements, except that frames shall be minimum of 16 gauge. Conceal all fastenings unless otherwise shown. Door frame for opening 103A is to be 12 gauge and be level 3 ballistic resistant.

B. Except as indicated otherwise on Drawings, frames for gypsum wallboard partitions shall be wrap around type with throat dimension sized to fit partition thickness.

C. Frames for gypsum wallboard partitions shall be provided with backbend returns.

D. Fabricate frames with mitered corners, knock down frames may be used at existing walls.

E. Rubber Door Silencers: Drill stops of interior frames to receive 3 silencers. Install plastic plugs to keep holes clear during construction.

4. INSTALLATION

A. Install metal units and accessories in accordance with mfr.'s data and as herein specified.

B. Placing Frames:

1. Set frames accurately in position, plumbed, aligned, and braced securely until permanent anchors are set. After wall construction is complete, remove temporary braces and spreaders leaving surfaces smooth and undamaged.

a. In stud partitions, place at least 3 wall anchors per jamb at hinge and strike levels. In open steel stud partitions, place studs in wall anchor notches and wire tie. In closed steel stud partitions, attach studs to wall anchors with self-tapping screws, or weld.

08 14 16 WOOD DOORS AND FRAMES

1. SCOPE

A. Provide wood doors and related work as indicated on Drawings and specified herein.

B. Types of doors required include the following:

a. Solid core Flush wood doors with veneer faces.  
b. Solid core Flush wood door with veneer face and level 3 ballistic resistance rating.

2. QUALITY ASSURANCE

A. General: Comply with requirements of following standards unless otherwise indicated.

a. Non-Fire Rated Wood Doors: NWMA Industry Standard I.S. I "Wood Flush Doors" of National Woodwork Manufacturer's Association.  
b. Factory mark each door with the NWMA "Quality Certified" Seal of Approval for conformance with NWMA I.S. 1.

3. MATERIALS AND COMPONENTS

A. General: Provide wood doors complying with applicable requirements of NWMA I.S.I. for kinds and types of doors indicated and as further specified.

a. Face Panels: Manufacturer's standard 2 or 3 ply face panels, unless otherwise specified.

b. Exposed Surfaces: Provide same exposed surface material on both faces and edges of each door, where doors to be natural finish or as otherwise indicated.

4. DOOR TYPES

A. See Drawings for locations, type, core and finishes.

• Core:  
a. Solid Core Construction: Solid wood block or particleboard

• Face Panels:

a. Provide manufacturer's standard 2 or 3-ply face panels of material as follows:  
Natural Finish: NWMA I.S. 1, good grade face veneers of plain sliced Red Oak with matching edges. Sharp contrast not permitted at veneer joints. Provide exposed edges and other solid wood components of same species of hardwood. Match finish of existing doors.

5. FACTORY FINISHING

A. Finish all doors to receive a transparent finish at the factory as indicated below.

1. Grade: Premium  
2. Finish: WDMA TR-6 catalyzed polyurethane  
3. Stain: Color selected by Architect  
4. Effect: Semi-filled finish, produced by applying an additional finish coat to partially fill the wood pores.

B. Finish faces, all four edges, edges of cutouts, and mortises. Stains and fillers may be omitted on top and bottom edges, edges of cutouts, and mortises.

C. Finish doors using three (3) coats of water-clear 100% solids, modified acrylic urethane, cured immediately with ultra-violet light.

D. Factory seal transparent finish doors on all six (6) sides using manufacturer's standard meeting these applications.

6. INSTALLATION

A. Mfr.'s Instructions: Install wood doors and frames in accordance with mfr.'s instructions and as indicated.

B. Condition doors to average prevailing humidity in installation area prior to hanging.

C. Job Fit Doors: Fit doors to frame for proper fit and uniform clearance at each edge and machine for hardware.

D. Fire Rated Doors: See schedule for location. Provide UL labeled doors meeting required rating.

E. Receive, store and be responsible for finish hardware. Apply hardware in accordance with mfr.'s instructions, fit accurately, apply securely and adjust carefully. Use care not to injure work when applying hardware.

F. Prior to completion of building examine all doors and other movable parts; adjust as required and leave hardware in good working order.

G. Remove and replace doors and hardware as required for field finishing. .

H. Replace and/or refinish doors which have been scratched, marked or otherwise damaged.

08 41 13 ALUMINUM FRAMED STOREFRONT

PART 1 GENERAL  
Furnish all necessary materials, labor, and equipment for the complete installation of the aluminum storefront framing system as shown on the drawings and specified herein.

1. SUMMARY

A. Section includes: Aluminum Storefront Systems

2. SYSTEM DESCRIPTION

A. Performance Requirements: Provide aluminum storefront systems that comply with the following specific performance requirements indicated.  
a. Air Infiltration: Completed storefront systems shall have 0.06 CFM/FT² maximum allowable infiltration when tested in accordance with ASTM E 283 at differential static pressure of 6.24 psf (299 Pa).

B. Water Infiltration: No uncontrolled water when tested in accordance with ASTM E 331 at test pressure differential of: 10 PSF. Fastener Heads must be seated and sealed against Sill Flashing on any fasteners that penetrate through the Sill Flashing.

C. Wind Loads: Completed storefront system shall withstand wind pressure loads normal to wall plane indicated: a. Exterior Walls:  
1) Positive Pressure: 70 psf.  
2) Negative Pressure: 70 psf.

D. Deflection: Maximum allowable deflection in any member when tested in accordance with ASTM E 330 allowable stress in accordance with AAMA Specifications for Aluminum Structures.

a. For spans less than 13' - 6" (4.1m): L/175 or 3/4" (19.1mm) maximum

E. Thermal Movement: Provide for thermal movement caused by 180 degrees F. (82.2 degrees C) surface temperature, without causing buckling stresses on glass, joint seal failure, undue stress on structural elements, damaging loads on fasteners, reduction of performance, or detrimental effects.

3. SUBMITTALS

A. Product Data: Submit product data for each type storefront series specified.

B. Shop Drawings: Submit shop drawings showing layout, profiles, and product components, including anchorage, accessories, finish colors, and textures.

C. Close out Submittals:

1. Warranty: Submit warranty documents specified herein.

4. PRODUCT CONDITIONS / SITE CONDITIONS

A. Field Measurements: Verify actual measurements/openings by field measurements before fabrication; show recorded measurements on shop drawings. Coordinate field measurements, fabrication schedule with construction progress to avoid construction delays.

5. WARRANTY

A. Manufacturer's Warranty: Submit, for Owner's acceptance, manufacturer's standard warranty document executed by an authorized company official.

1. Warranty Period: Manufacturer's one (1) year standard warranty commencing on the substantial date of completion for the project provided that the warranty, in no event, shall start later than six (6) months from the date of shipment by YKK AP America Inc.

PART 2 PRODUCTS

1. MANUFACTURERS (Acceptable Manufacturers/Products)

A. Acceptable Manufacturers: YKK AP America Inc.  
270 Riverside Parkway, Suite A  
Austell, GA 30168

1. StoreFront System: YKK AP YES 40 FI SERIES

B. Storefront Framing Systems:

a. Description: Center set, exterior flush glazed; jambs and vertical mullions continuous; head, sill, intermediate horizontal attached by screw spline joinery. Continuous and wept sill flashing.

b. Components: Manufacturer's standard extruded aluminum mullions, framing, and indicated shapes; perimeter anchor fillers and steel reinforcing as required.

c. Glazing: Manufacturer's standard glazing stops with EPDM glazing gaskets to prevent water infiltration at the exterior and Dow Corning®995 Structural Silicone Sealant with fixed stops at the interior.

d. Thermal Barrier: Provide continuous thermal barrier by means of a poured and debridged packet consisting of a two part, chemically curing high density polyurethane which is bonded to the aluminum by YKK ThermoBond Plus® Systems employing non structural thermal barriers are not acceptable.

2. MATERIALS

A. Extrusions: ASTM B 221 (ASTM B 221M), 6063 - T5 Aluminum Alloy.

B. Aluminum Sheet:  
a. Anodized Finish: ASTM B 209 (ASTM B 209M), 5005 - H14 Aluminum Alloy, 0.050" (1.27 mm) minimum thickness.

3. DOORS

A. Provide YKK model 35H Protek Impact resistant door.

4. HARDWARE

A. Provide offset-pivots, closer lever, exterior with key, panic device, interior and full saddle threshold.

5. ACCESSORIES

A. Manufacturer's Standard Accessories:  
a. Fasteners: Zinc plated steel concealed fasteners; Hardened aluminum alloys or AISI 300 series stainless steel exposed fasteners.

b. Glazing: Setting blocks, edge blocks, and spacers in accordance with ASTM C 864; shore durometer hardness as recommended by manufacturer; Glazing gaskets in accordance with ASTM C 864. 3. 0.050 Aluminum Sill Flashing End Dams Featuring 3 point attachment.

6. GLASS

A. Match existing color/impact resistant.

7. FABRICATION

A. Shop Assembly: Fabricate and assemble units with joints only at intersection of aluminum members with hairline joints; rigidly secure, and sealed in accordance with manufacturer's recommendations.

8. FINISHES AND COLORS

A. Anodized Finishing: Prepare aluminum surfaces for specified finish; apply shop finish in accordance with the following:  
1. Anodic Coating: Electrolytic color coating followed by an organic seal applied in accordance with the requirements of AAMA 612. Aluminum extrusions shall be produced from quality controlled billets meeting AA - 6063 T5.  
a. Exposed Surfaces shall be free of scratches and other serious blemishes.  
b. Extrusions shall be given a caustic etch followed by an anodic oxide treatment and then sealed with an organic coating applied with an electrodeposition process.  
c. The anodized coating shall comply with all of the requirements of AAMA 612: Voluntary Specifications, Performance Requirements and Test Procedures for Combined Coatings of Anodic Oxide and Transparent Organic Coatings on Architectural Aluminum. Testing shall demonstrate the ability of the finish to resist damage from mortar, salt spray, and chemicals commonly found on construction sites, and to resist the loss of color and gloss.  
d. Overall coating thickness for finishes shall be a minimum of 0.7 mils.

PART 3 EXECUTION

1. MANUFACTURER'S INSTRUCTIONS / RECOMMENDATIONS

A. Compliance: Comply with manufacturer's product data, including product technical bulletins, installation instructions, and product carton instructions. The latest installation instructions are available at www.ykkap.com.

2. EXAMINATION

A. Site Verification of Conditions: Verify substrate conditions (which have been previously installed under other sections) are acceptable for product installation in accordance with manufacturer 's instructions.

3. PREPARATION

A. Adjacent Surfaces Protection: Protect adjacent work areas and finish surfaces from damage during product install.

1. Aluminum Surface Protection: Protect aluminum surfaces from contact with lime, mortar, cement, acids, and other harmful contaminants.

4. INSTALLATION

A. General: Install manufacturer's system in strict accordance with shop drawings, and within specified tolerances.

1. Shim and brace aluminum system before anchoring to structure.  
2. Provide sill flashing at exterior storefront systems. Extend extruded flashing continuous with splice joints; set in continuous beads of sealant and wept.

3. Verify storefront system allows water entering system to be collected in gutters and wept to exterior. Verify metal joints are sealed in accordance with the manufacturer's instructions.

4. Seal metal to metal storefront system joints using sealant recommended by system manufacturer.

5. CLEANING

A. Cleaning: The General Contractor shall clean installed products in accordance with manufacturer's instructions prior to Owner's acceptance, and remove construction debris from project site. Legally dispose of debris.

B. Protection: The General Contractor shall protect the installed product's finish surfaces from damage during construction.

08 71 00 FINISH HARDWARE

1. SCOPE

A. Furnish to job site for fitting and installation by others, all finish hardware and related items as indicated on Drawings and specified herein.

B. See drawings for Door Schedule and Hardware Schedule.

2. QUALITY ASSURANCE

A. Supplier:  
• Supplier having appropriate technical knowledge and experience to correctly interpret Drawings and Specifications shall furnish finish hardware. Supplier shall be prepared at all times during progress of installation to promptly provide competent and efficient architectural hardware consultant (AHC or equivalent) to approve its installation to end that all items shall be installed in best manner and function properly.

B. The following specified mfr. for purpose of establishing type and quality. Approved equals are acceptable:  
• Butts, Hagar  
• Locksets, SCHLAGE  
• Closers, LCN 1461  
• Exit Devices, Von Duprin

3. SUBMITTALS

A. Pre-Construction:  
• Submit three (3) complete typewritten hardware schedules to the Architect for approval. Mfr.'s name and product number shall identify each different item in schedule at least one time in schedule.

4. GUARANTEE

A. Supplier hereby guarantees that all materials specified under this Section shall be free from all defects and shall perform satisfactorily for period of one year after completion. This supplier shall replace at his own expense including labor, any item of finish hardware, which may prove defective within this period.

5. KEYING

A. Coordinate keying with Owner.

6. FINISHES

A. All Finishes, unless otherwise specified in hardware schedule shall be:  
• Hinges: Exterior - USP, Interior - 32D  
• Locks: 32D  
• Closers: Stainless Steel  
• Miscellaneous: 32D

DIVISION 9 – FINISHES

09 22 10 METAL STUD FRAMING

1. SCOPE OF WORK

A. Provide interior metal stud partition framing and related work as indicated on Drawings.

2. MATERIALS

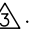
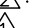

A. Studs, Tracks and Trim:  
a. Screw-type complying with ASTM C-645 with mfr.'s standard zinc coating.

b. Fabricate studs from 25 and 20 gauge steel.

3. INSTALLATION

A. Partition Framing shall extend from floor to 4' above ceiling grid.

B. Stud size, is indicated on Drawings. When unbraced partition height exceeds the manufacturer's requirements, Contractor shall provide heavier gauge, size or spacing to comply.

REVISION  .....  
REVISION  .....  
REVISION  .....

ISSUED FOR: ---  
ISSUED FOR: ---  
ISSUED FOR PERMIT & BID: 04/20/18  
ISSUED FOR APPROVAL: 04/10/18

DRAWN BY: ----  
REVIEW BY: ----

THE LUNZ GROUP  
© COPYRIGHT 2017 ALL RIGHTS RESERVED

58 Lake Morton Drive  
Lakeland, FL 33801-5344  
p 863.682.1862  
f 863.687.6346  
lic. AAC001580

lunz.com

1728.02

A-900



434 Fernleaf  
Sebring, Florida 33870

## Specifications

THE LUNZ GROUP  
© COPYRIGHT 2017 ALL RIGHTS RESERVED

lunz.com

# A-901

- D. Remove all hardware, hardware accessories, machined surfaces, plates, lighting fixtures, and similar items in place and not to be finish-painted, or provide surface-applied protection prior to surface preparation and painting operations. Following completion of painting of each space or area, reinstall removed items by workmen skilled in trades involved.
- E. Clean surfaces to be painted before applying paint or surface treatments. Remove oil and grease prior to mechanical cleaning. Program cleaning and painting so that contaminants from cleaning process will not fall onto wet, newly-painted surfaces.
- F. Do not paint over dirt, rust, scale, grease, moisture, scuffed surfaces or conditions otherwise detrimental to formation of durable paint film. Prepare cementitious surfaces of concrete, concrete block, cement plaster and

6. WALLBOARD FINISHING

a. Level 4: Smooth Finish. Where flat paints or light wall coverings are indicated.

A. Use joint tape to reinforce joints formed by tapered edges or butt end and at interior corners and angles. Set tape in joint compound then apply skin coat over tape in one application.

B. Application of Joint Compounds: After mixing, do not use joint compounds if recommended pot-life time has expired. Allow drying time between applications of joint compound in accordance with mfr.'s recommendations for relative humidity and temperature levels at time of application. Apply specified number of coats of joint compound over all joints, fastener heads and flanges. Sand between and after compound application as required to produce smooth level surface.

C. First layer of concealed surfaces (i.e. above ceilings) shall require only first coat finishing for joints, fasteners and accessories.

D. Finish wallboard surfaces with all exposed joints, fastener heads, trim accessory flanges and surface defects filled with joint compound in accordance with mfr.'s recommendations for smooth, flush surface. Form true, level or plumb lines, without joints, fastener heads, flanges of trim accessories or defects visible after application of field-applied decoration

1. SCOPE
  - A. Provide acoustic/gypsum panel ceiling system and related items as required to complete work as indicated on Drawings and specified herein.
2. EXPOSED GRID SUSPENSION SYSTEM
  - A. Manufacturers: Provide specified suspension system manufactured by one of the following :
    - Chicago Metallic
    - Donn Products
    - Eastern Products
    - Flangeklamp
    - National Rolling Mills/Bundy
3. ACOUSTIC/GYPSUM PANELS
  - A. 2 x 4 Armstrong Ceramigard fine fissured, standard edge, white.
4. COORDINATION AND LAYOUT
  - A. Prior to start of acoustic/gypsum ceiling/soffit work, consult other trades and Contractors involved to determine areas of potential interference. Do not start installation of suspension systems until interferences have been resolved.
  - B. Layout grid square with rooms in configuration indicated on Architectural Reflected Ceiling Plans.

SCOPE

A. Provide resilient tile flooring, base and related work as indicated on Drawings and specified herein.

2. MATERIALS

A. Luxury vinyl flooring basis of design: Refer to drawings.

B. Resilient base: Vinyl base in roll goods complying with FS SS-W-40, Type II, 1/8" thick. Provide high base except as noted otherwise on Drawings. Provide straight base without cove at carpet floors and top set cove base at all other areas.

C. Adhesives (Cements): Waterproof, stabilized type as recommended by flooring or accessory mfr. Asphalt emulsions and other non-waterproof types not acceptable.

D. Concrete Slab Primer: Non-staining type as recommended by tile mfr.

3. INSTALLATION

A. Provide resilient tile flooring with adhesive cement in strict compliance with mfr.'s recommendations. Butt flooring tightly to vertical surfaces, thresholds, nosings and edgings. Scribe as necessary around obstructions and to produce neat joints. Extend resilient flooring into toe spaces, door reveals, and into closet and similar openings.

B. Install resilient tile with 'grain' running in the same direction. 'Grain' shall run in long direction of room.

C. Wall Base: Apply to all columns, pilasters, cabinetwork and other permanent fixtures in rooms or areas where base is required. Install base in as long lengths as practical, with tight hairline end joints. Tightly bond base to backing throughout length of each piece, with continuous contact at horizontal and vertical surfaces.

4. CLEANING AND PROTECTION

A. Remove any excess adhesive or other surface blemishes from flooring and accessory unit, using neutral type cleaners as recommended by flooring manufacturer. Protect installed flooring from damage by use of heavy Kraft paper or other covering.

B. Finishing: After completion of project and just prior to final inspection of work, thoroughly clean resilient floors and accessories. Apply wax and buff, with type of wax, number of coats and buffing procedures in compliance with flooring manufacturer's instructions.

SCOPE

A. Provide painting and related work as indicated on Drawing as specified herein.

B. Except as specified otherwise, work includes painting and sealing of all exposed gypsum wallboard, doors and frames and unfinished miscellaneous items requiring painting.

C. Do not include painting when factory-finishing or installer finishing is specified for such items as (but not limited to) metal toilet enclosures, acoustic materials, finished mechanical and electrical equipment.

2. QUALITY ASSURANCE

A. Provide Coating Systems which are compatible with the various substrates and as recommended by the Manufacturer.

3. PAINTING SCHEDULE

A. Interior surfaces shall receive the following: Sherwin Williams or approved equal.

- Hollow Metal Doors & Frames: 1 coat Pro Industrial Pro-Cryl® Primer, B66-310 Series, 2 coats Pro Industrial High Performance Acrylic Semi-Gloss, B66W650 Series.
- Concrete Masonry Units: 2 coats Pro Industrial zero VOC Acrylic Series.
- Gypsum Wallboard: 1 coat Primer ProMar 200 Zero VOC Latex Primer, B28W2600, Primer #372, 2 coats Pro Industrial Pre-Catalyzed Epoxy B70B60V15 Series in Toilet Rooms Janitor, all other spaces 2 coats ProMar 200 Zero VOC Latex Flat B28W2600 Series.
- Wood: Stain coat 44500 Interior Low VOC Oil Wood Stain, Sealer coat Olympic 41061 Waterborne Sanding Sealer. Finish coats Olympic 42786 Waterborne Satin Polyurethane Varnish.

B. Exterior surfaces shall receive the following: Sherwin Williams or approved equal.

- Hollow Metal Doors & Frames: 2 coats Pro Industrial Zero VOC Semi-Gloss Acrylic B66W651 Series.
- Concrete Masonry Units & Stucco: 2 coats A-100 Flat A6W151 Series.

4. APPLICATION
- A. Applicator must examine areas and conditions under which painting work is to be applied. Notify Architect of conditions detrimental to proper and timely completion of work. Do not proceed with work until unsatisfactory conditions have been corrected in manner acceptable to Applicator.
  - B. Starting of painting work will be construed as Applicator's acceptance of surfaces and conditions within any particular area.
  - C. Perform preparation and cleaning procedures in strict accordance with paint mfr.'s instructions and as herein specified, for each particular substrate condition.

NONE SPECIFIED

NONE SPECIFIED

NONE SPECIFIED

NONE SPECIFIED

SEE DRAWINGS

SEE DRAWINGS

NONE SPECIFIED