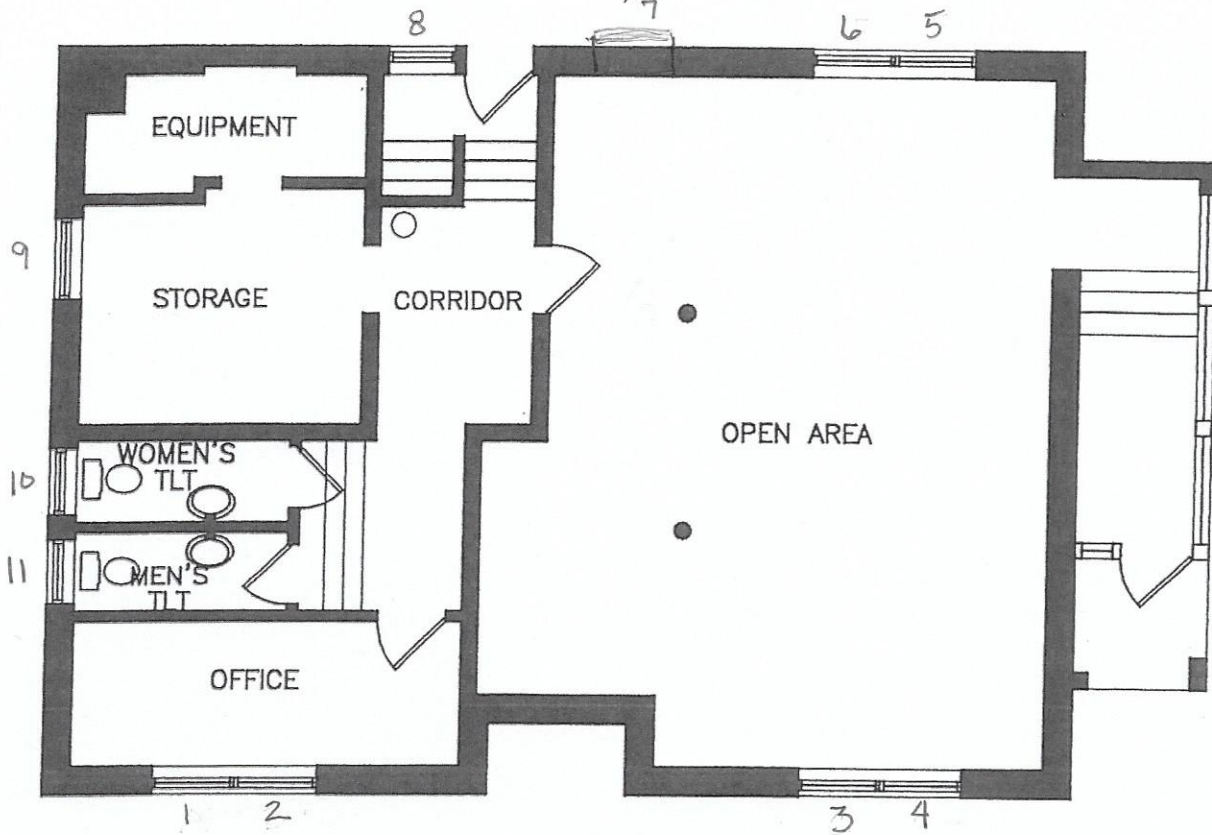


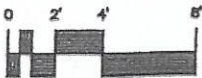
ATTACHMENT # 2

NOTE: SINGLE WINDOW
NOT ON 9/1997 DRAWING
(SEE PHOTOS)

(PAGE 1 OF 2)



EXISTING BASEMENT FLOOR PLAN



SCALE: 1/8" = 1'-0"

9729EC01

LOTT
DARMER
ARCHITECTS

Savannah, Georgia

9122545230

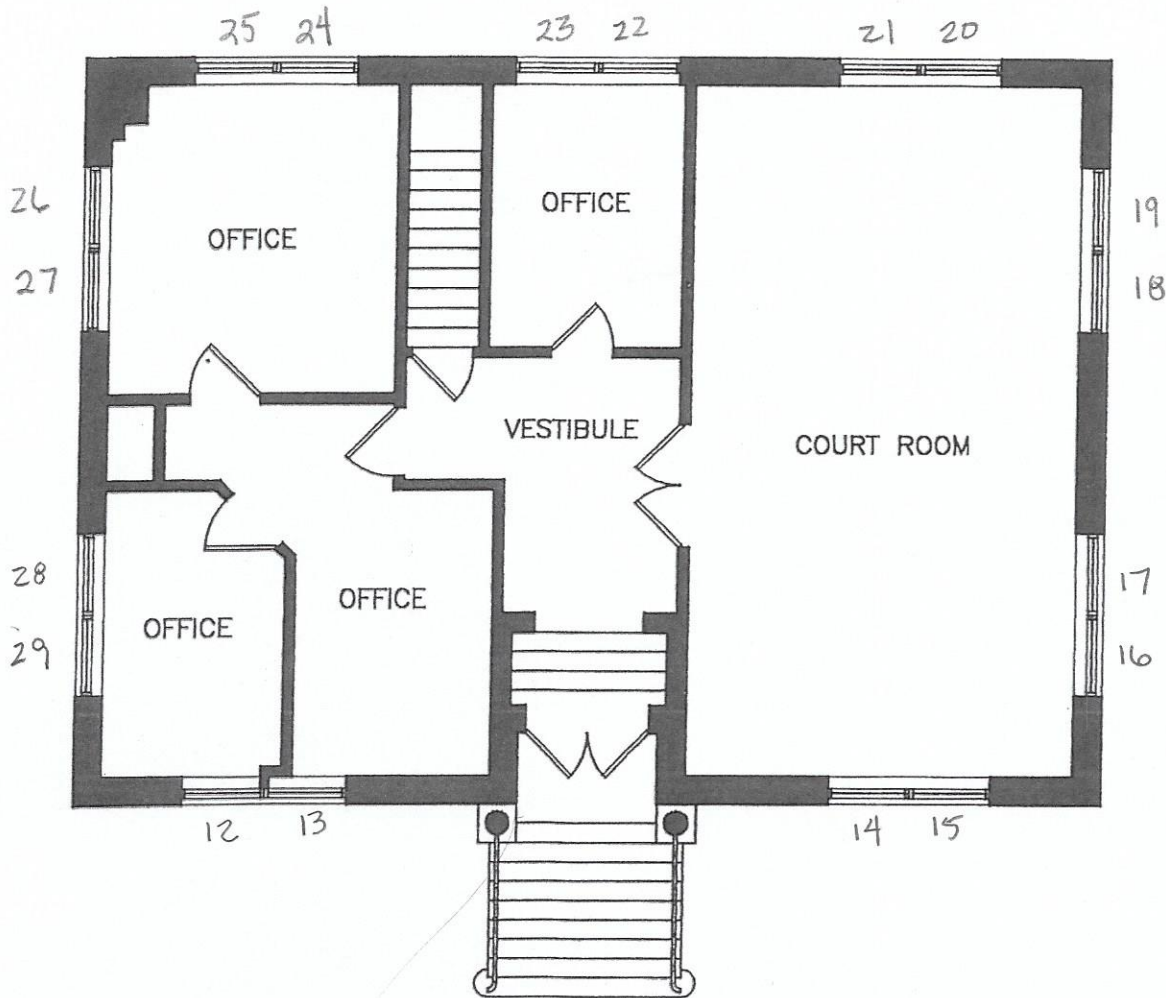
RENOVATIONS TO:
**OLD CARNEGIE
LIBRARY**

BEAUFORT,

SOUTH CAROLINA

JOB NO.:	9729
DATE:	
DRAWN:	AGA
CHECKED:	NAD
PLOTTED:	9/16/97

EC01



EXISTING FIRST FLOOR PLAN



SCALE: 1/8" = 1'-0"

9729EC02

LOTT | **DARMER**
ARCHITECTS
Savannah, Georgia 912/254-5230

RENOVATIONS TO:
OLD CARNEGIE LIBRARY
BEAUFORT, SOUTH CAROLINA

JOB NO.: 9729
DATE:
DRAWN: AGA
CHECKED: NAD
PLOTTED: 9/16/97

EC02

Carnegie Library Building Windows

South Elevation:

4: 36" x 56", 9 over 1, double windows installed in pairs (Main Floor) (#12, 13, 14, 15)

4: 36" x 42", 6 over 6, double windows installed in pairs (basement, located at ground level) (#1, 2, 3, 4)

North Elevation:

6: 36" x 56", 9 over 1, double windows installed in pairs (Main Floor) (#20, 21, 22, 23, 24, 25)

3: 36" x 42", 6 over 6, double windows installed in 1 pair + 1 alone (basement, located at ground level) (#5, 6, 7)

1: 24" x 24, 4 over 4 double window (basement, located at ground level) (#8)

East Elevation:

4: 36" x 56", 9 over 1, double windows, installed in pairs (main floor) (#16, 17, 18, 19)

West Elevation:

4: 36" x 36", single 9 panes, double windows, installed in pairs (main floor) (#26, 27, 28, 29)

2: 24" x 42", 4 over 4, double windows (basement, located at ground level) at ground level (#10, 11)

1: 36" x 42", 6 over 6 double window (basement, located at ground level) (#9)