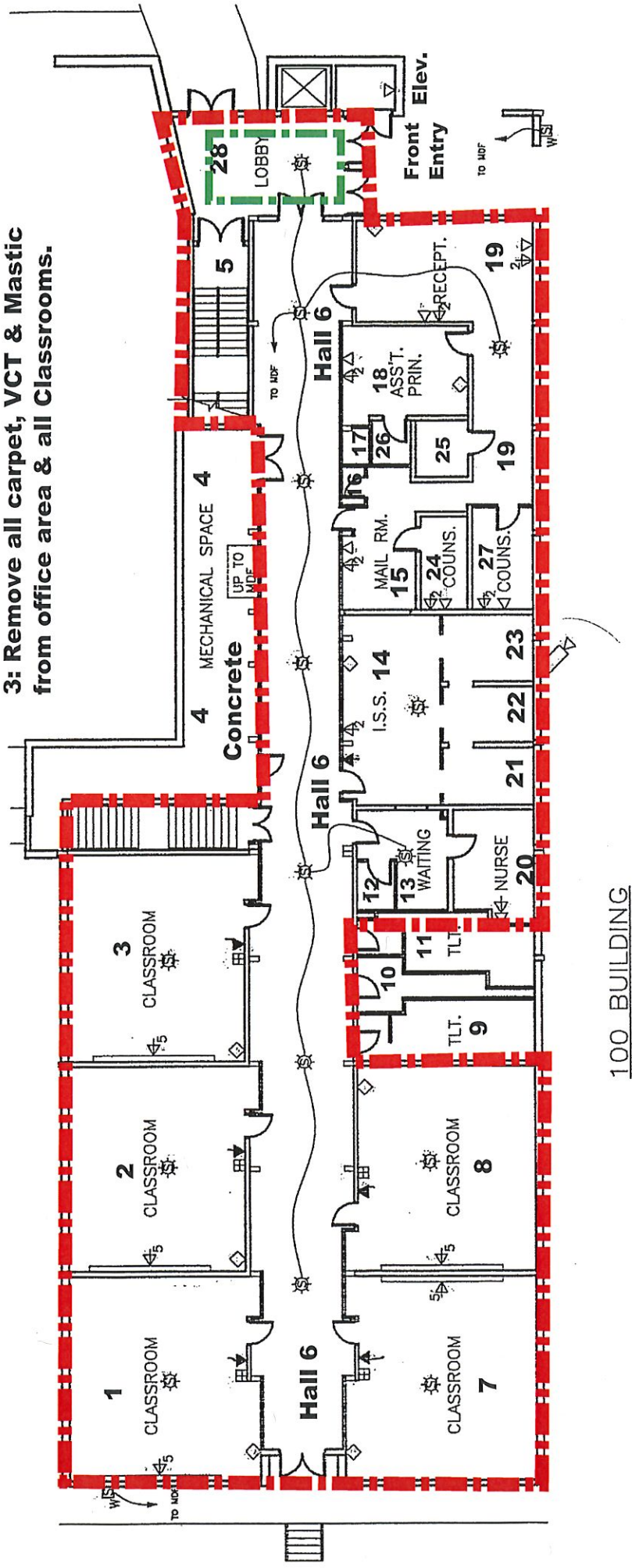


ACM Removal Drawing (A) Level 1:

A9: 9x9 VCT & Mastic; Plus Carpet will be Abated & Removed. (Some 12x12 VCT:) Measured SF: 9,138 SF
Rooms and Corridors have been measured & are within the Red Hyphenated Line.

Former LHS Revised Drawing:

- Notes: Nov. 17, 2020**
- 1: Lobby #28: A12-VCT is Clear: Remove the VCT & Mastic:**
 - 2: All Carpet: Mastic: VCT: Stair Tread will be abated & removed from the Stairwells.**
 - 3: Remove all carpet, VCT & Mastic from office area & all Classrooms.**



100 BUILDING

ACM Removal Drawing (B): Level 2:

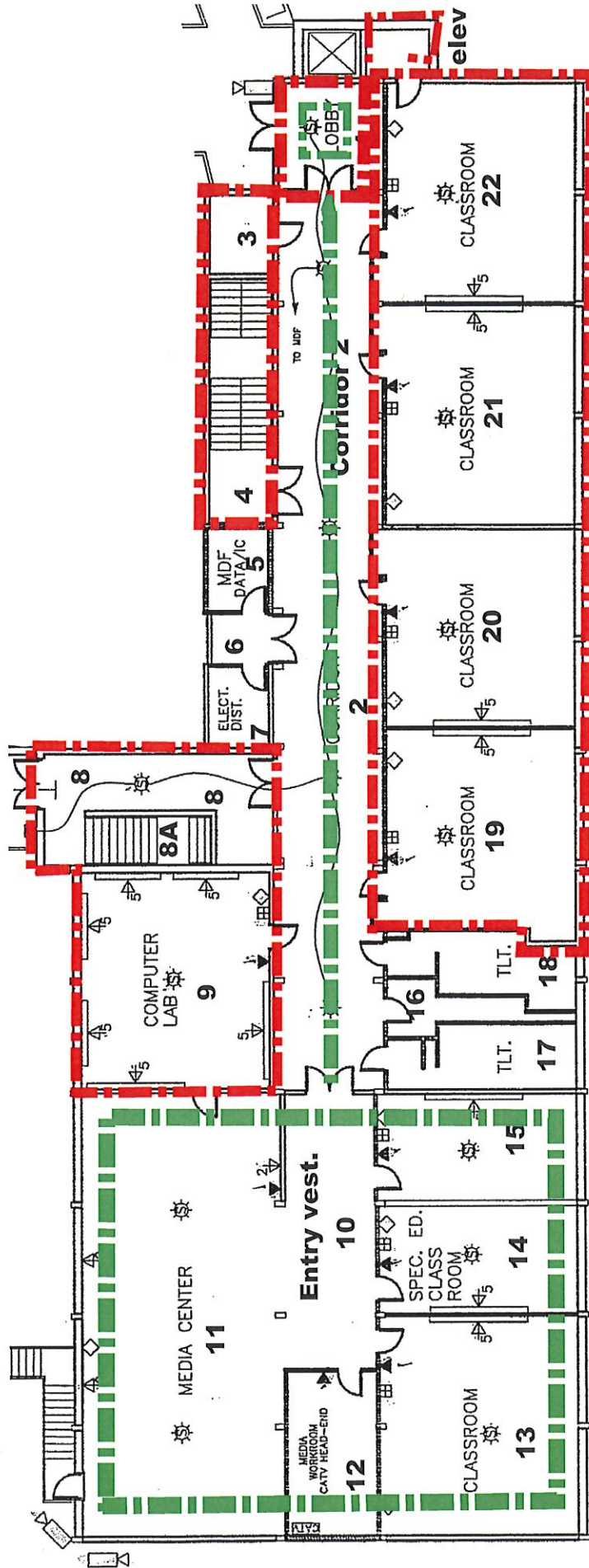
A9: 9x9 VCT:

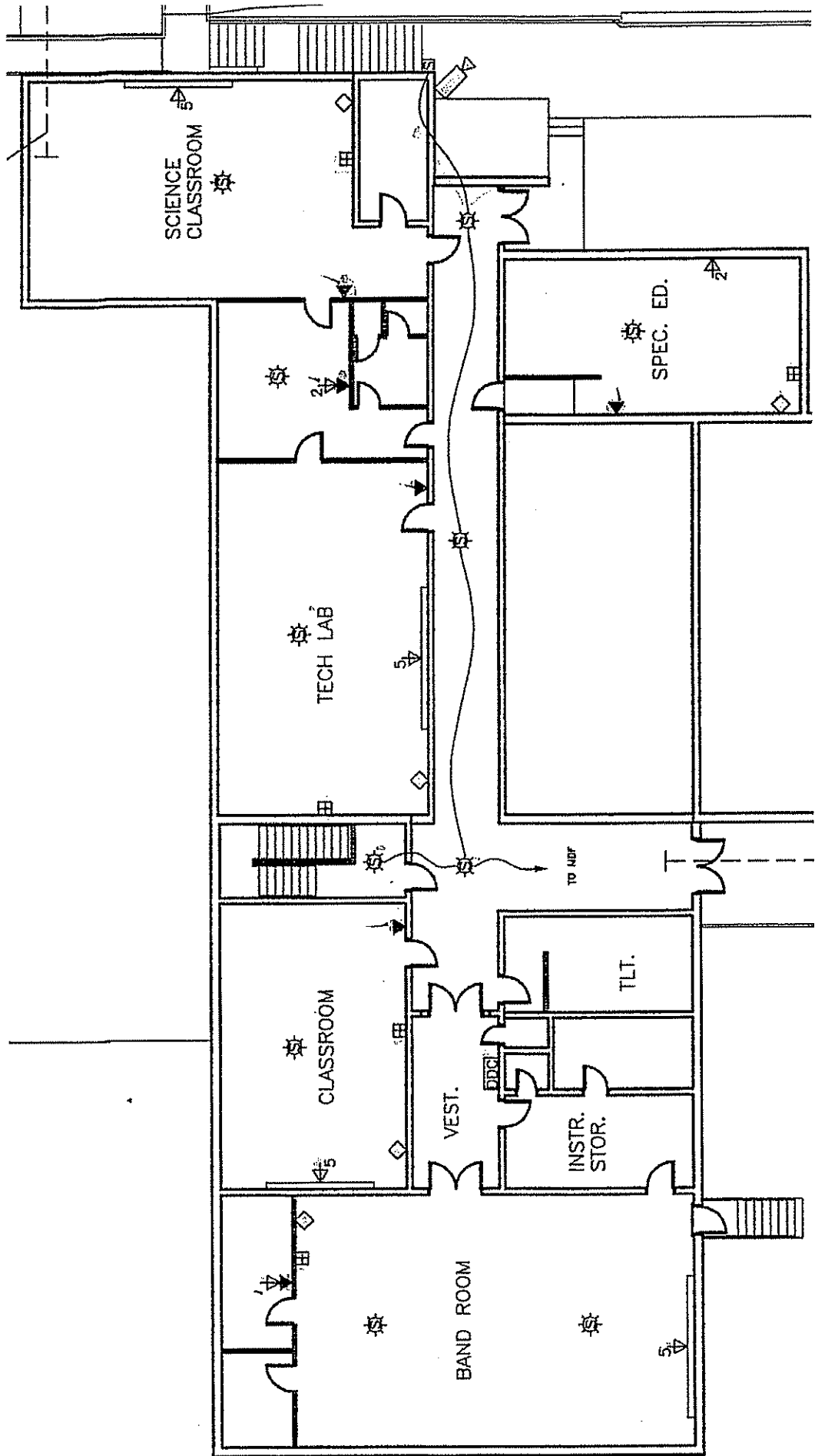
1: Inside Red Line: Approx. 3,100 SF of ACM will be abated.

2: Green Line Area: Approx. 5,700 SF of Non-ACM will be removed with floors being cleaned: Concrete Floors.

**Former LHS Revised Drawing:
Nov. 17, 2020:**

Note: The VCT in the lobby tested clear: The VCT & Mastic will be removed: Scope of Work will indicate if containment will be provided in the location.





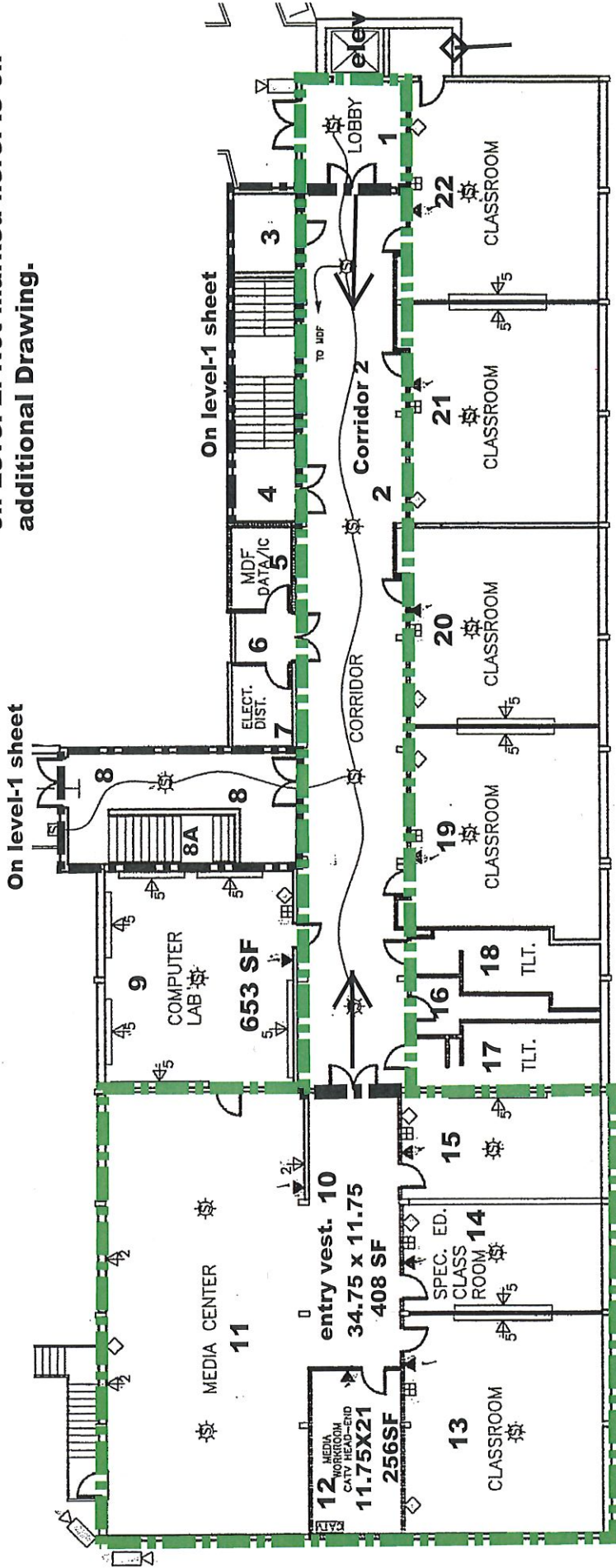
Drawing C:

Former LaFayette High Renovation

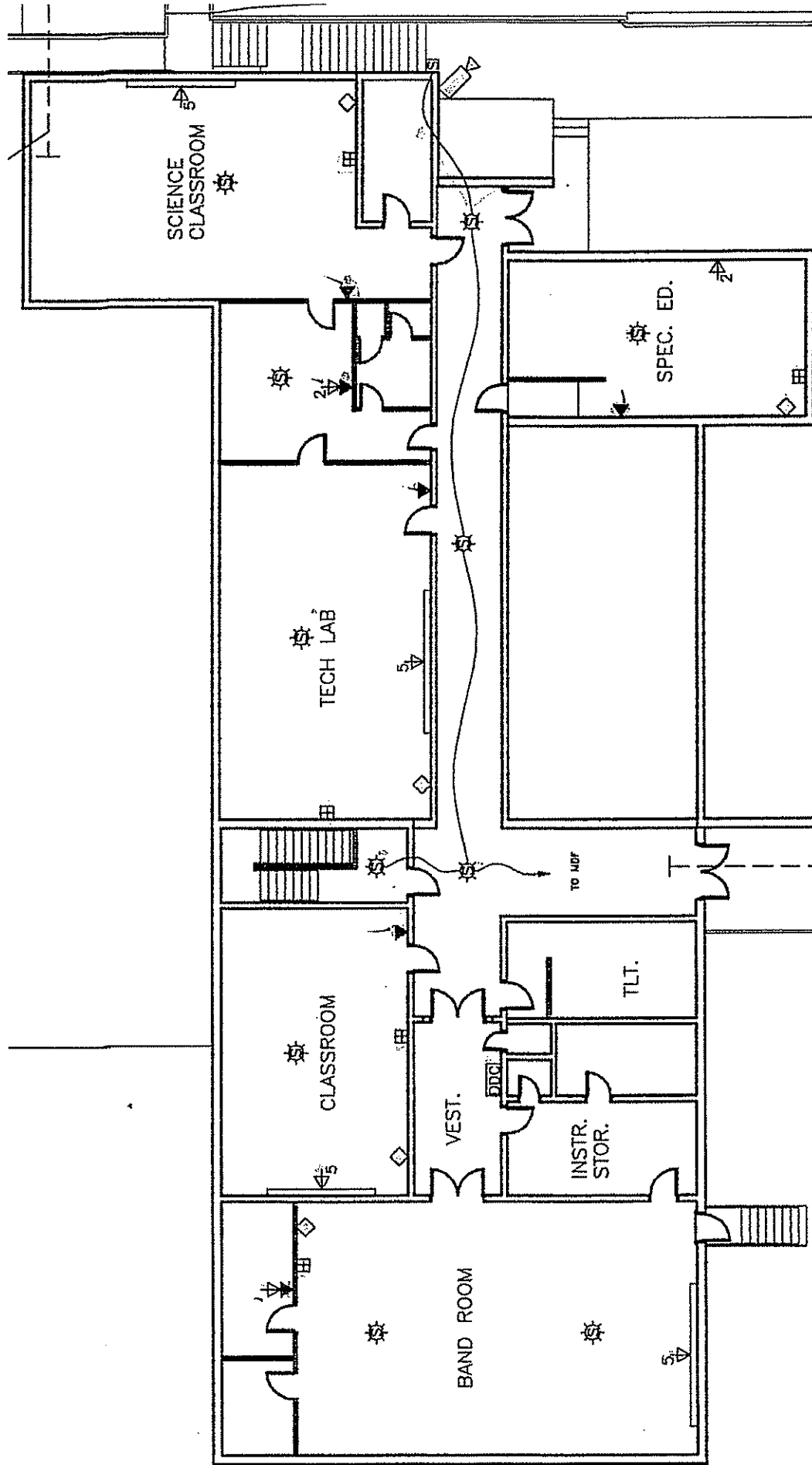
Note: Space outlined in Green is Non-ACM and the carpet will be removed: Plus clean the floor. There is 5,020 SF of space in this area plus the 2 Lobby Areas will make Approx. 5,700 SF of Non-ACM: with most on Level-2. Level-2 will have Approx. 3,100 SF of ACM to remove.

Note: Remove 5,700 SF of Non-ACM: Area outlined in Green: One Lobby on Level-1; with one Lobby on Level-2.

Note: Abate Approx. 3,100 SF of ACM on Level-2: Not marked here: Is on additional Drawing.



This Drawing is not part of the Abatement Project
Dec. 2020:



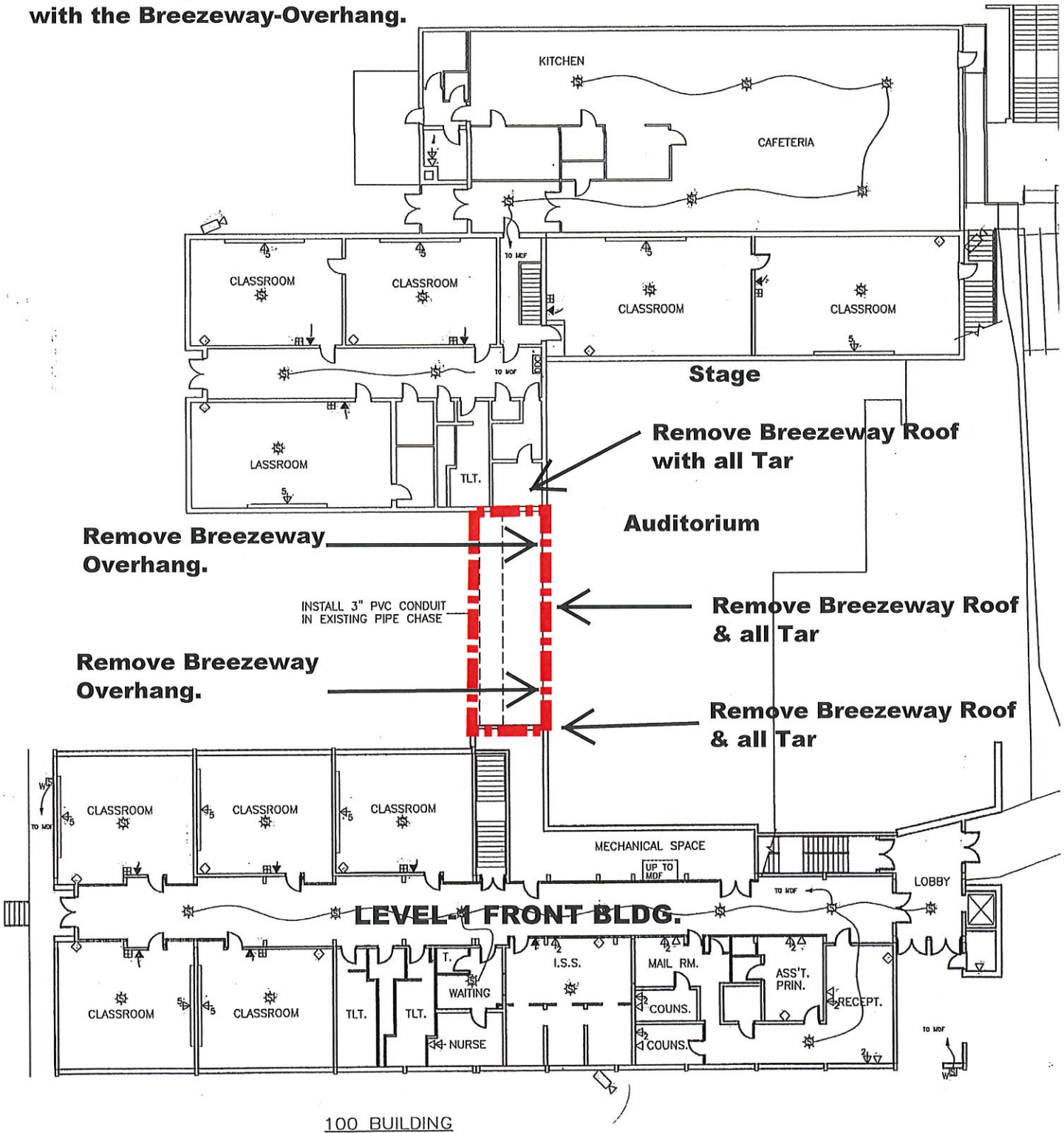
ACM Roof Removal Drawing (D)

Roofing Material is Tar:

Remove the entire overhang and then removed any and all Tar on the brick and any associated materials with the Breezeway-Overhang.

Roof Drawing (D)

300 BUILDING

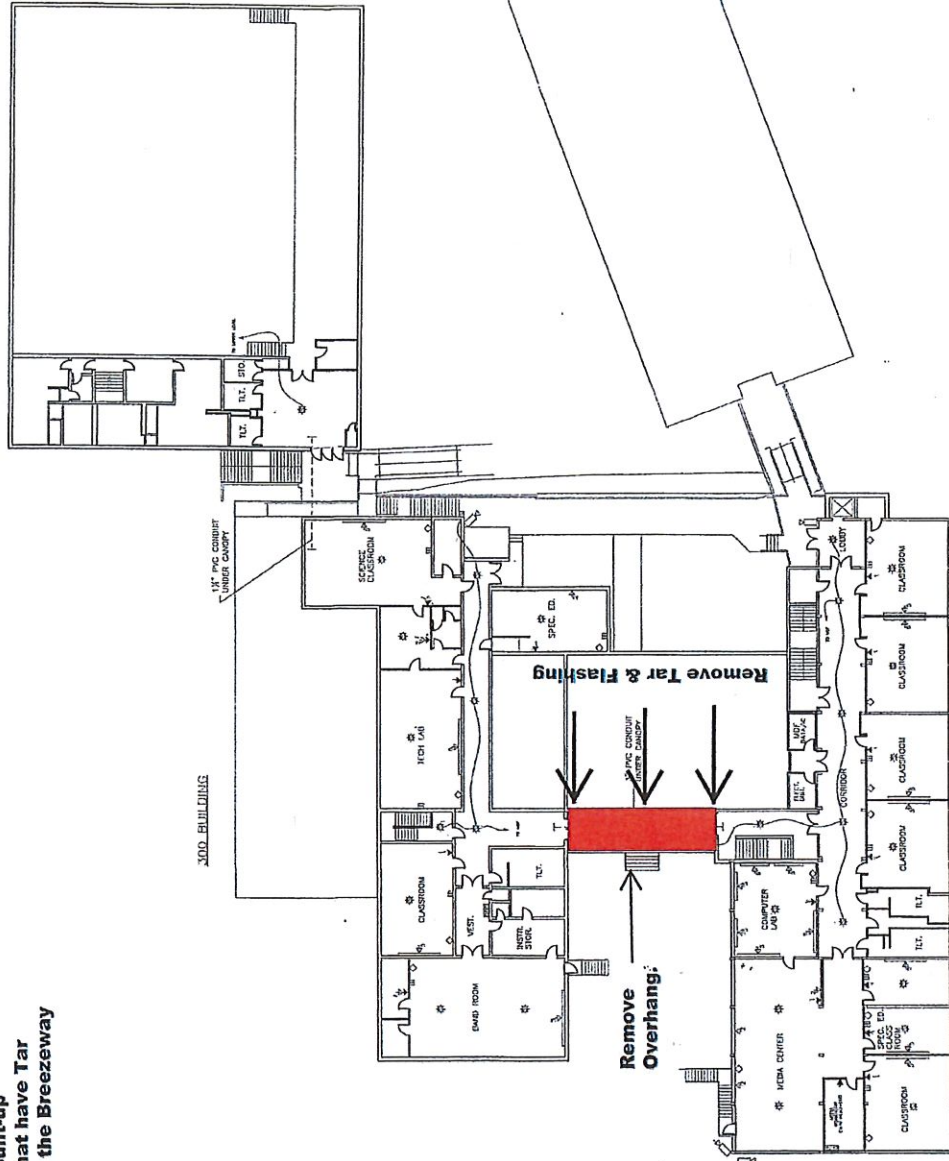


Roof Drawing E:

2005 849 AM
Lafayette 6th Grade Academy.dwg

ACM Removal Drawing (H):
RM: Roofing Material: Built-up
 Remove all materials that have Tar
 that is associated with the Brezeway
 to the Auditorium.

**Remove
 Overhang
 entirely.
 Scrape the
 brick to
 the side
 & back.**



100 BUILDING

UPPER LEVEL RENOVATION PLAN
 07/11/04

INSTALLATION NOTES

- SEE SHEET E2.3 FOR INSTALLATION DETAILS
- ROUTE ALL DATA GROUPS IN 100 BUILDING TO J07
- ROUTE ALL DATA GROUPS IN J00 BUILDING TO 100 CLOSEST DDC
- ROUTE ALL DATA GROUPS IN C01 TO J00 BLDG UPPER LEVEL DDC

SYMBOL LEGEND

- 1" PVC CONDUIT UNDER CANOPY
- 1" PVC CONDUIT UNDER CANOPY
- COMBINATION SPREADER/PULL SWITCH
- WALL MOUNT 1/2" TELEPHONE
- REMOTE TELEPHONE LOCATION
- TELEVISION OUTLET
- CITY CAMERA
- TRUCKER MULTIMEDIA OUTLET
- DATA OUTLET X - QUANTITY
- DATA DISTRIBUTION CABLE

8

FILE NAME:
 SMC 6TH GRADE AUDITORIUM
 ENG. DATE: 11 NOV 04
 DRAWN BY: C. HARRAY
 ENG. BY:

NO.	DESCRIPTION	DATE

DRAWING SCALE
 1/16" = 1'

TITLE:
 WALKER COUNTY SCHOOLS
 LAFAYETTE 6TH GRADE ACADEMY
 LOW VOLTAGE INSTALLATIONS

LAFAYETTE 6TH GRADE ACADEMY

PROJECT NUMBER
 PROPOSAL
 SHEET NUMBER
 LVE.2.2
 11/16/04

- ① 27
- ② 28
- ③ 29
- ④ 30
- ⑤ 31
- ⑥ 32
- ⑦ 33
- ⑧ 34
- ⑨ 35
- ⑩ 36
- ⑪ 37
- ⑫ 38
- ⑬ 39
- ⑭ 40
- ⑮ 41
- ⑯ 42
- ⑰ 43
- ⑱ 44
- ⑲ 45
- ⑳ 46
- ㉑ 47
- ㉒ 48
- ㉓ 49
- ㉔ 50
- ㉕ 51
- ㉖ 52
- ㉗ 53
- ㉘ 54
- ㉙ 55
- ㉚ 56
- ㉛ 57
- ㉜ 58
- ㉝ 59
- ㉞ 60
- ㉟ 61
- ㊱ 62
- ㊲ 63
- ㊳ 64
- ㊴ 65
- ㊵ 66
- ㊶ 67
- ㊷ 68
- ㊸ 69
- ㊹ 70
- ㊺ 71
- ㊻ 72
- ㊼ 73
- ㊽ 74
- ㊾ 75
- ㊿ 76

LV BY
 SMC
 8/11/04