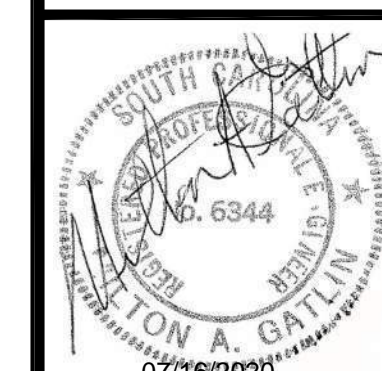




105 SILVER PINE CT
GREER, SC 2950



**FAIRFIELD CENTRAL
HIGH SCHOOL**
836 US HWY 321 BY-PASS
WINNSBORO, SC 29180



**FAIRFIELD COUNTY
SCHOOLDISTRICT**
1226 US-321 BYP
WINNSBORO, SC 29180

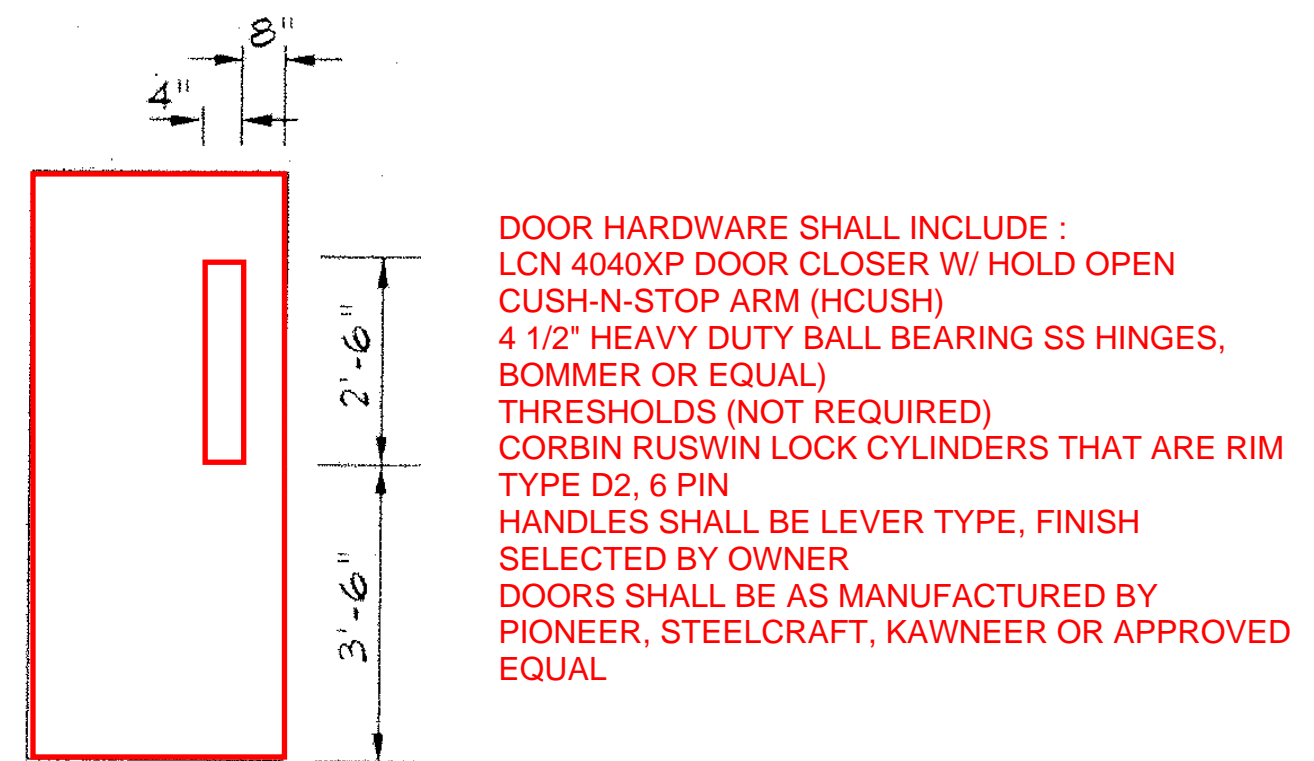
© 2020 DivTech
THIS DRAWING AND THE
DESIGN THEREON ARE THE
PROPERTY OF
DivTech
ANY REPRODUCTION OR UNAUTHORIZED USE
THEREOF WITHOUT WRITTEN PERMISSION MAY
BE SUBJECT TO LEGAL ACTION.

REVISIONS		
NO.	DATE	DESCRIPTION
A	07/16/2020	ISSUED FOR BIDS
B	07/24/2020	ADDENDUM 1
C	07/28/2020	ADDENDUM 2
D	07/31/2020	ADDENDUM 3

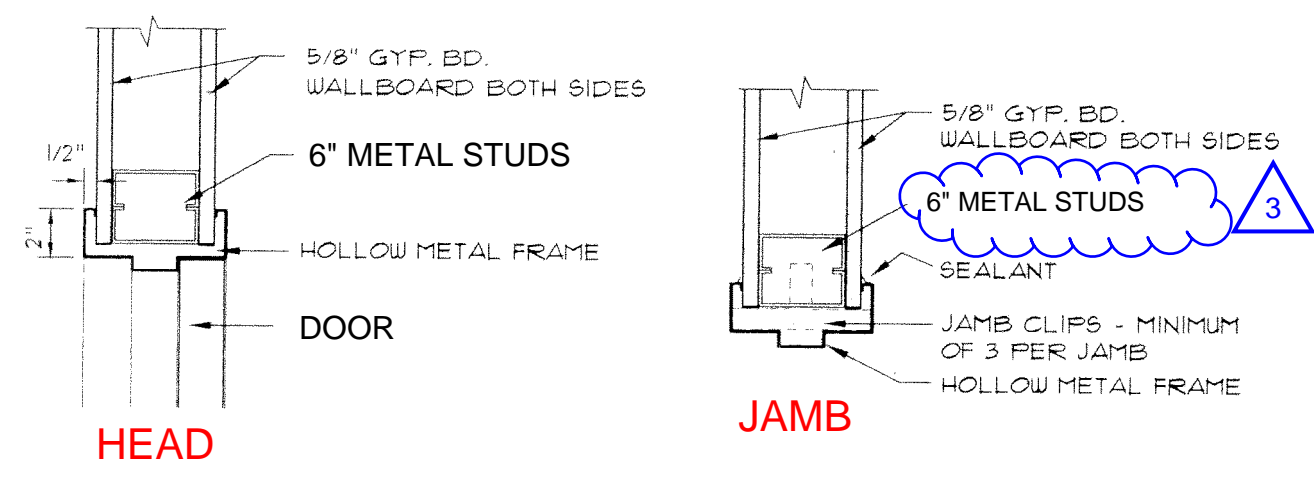
ITEM	DATE	BY
DESIGN	07/16/2020	MAG
DRAWN	07/16/2020	MAG
CHECKED	07/16/2020	MAG
APPR		
CLIENT APP		

ENTRYWAY UPGRADES

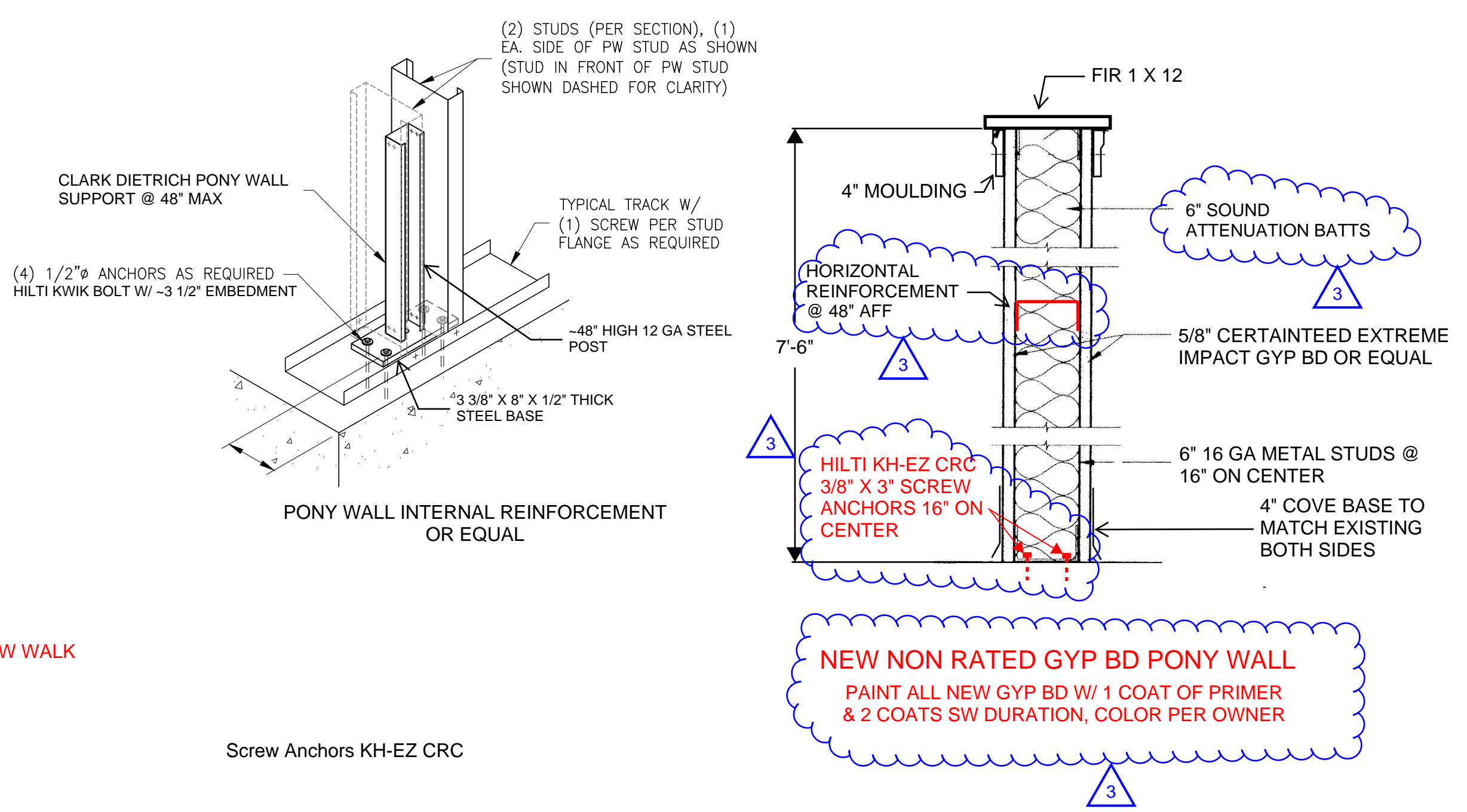
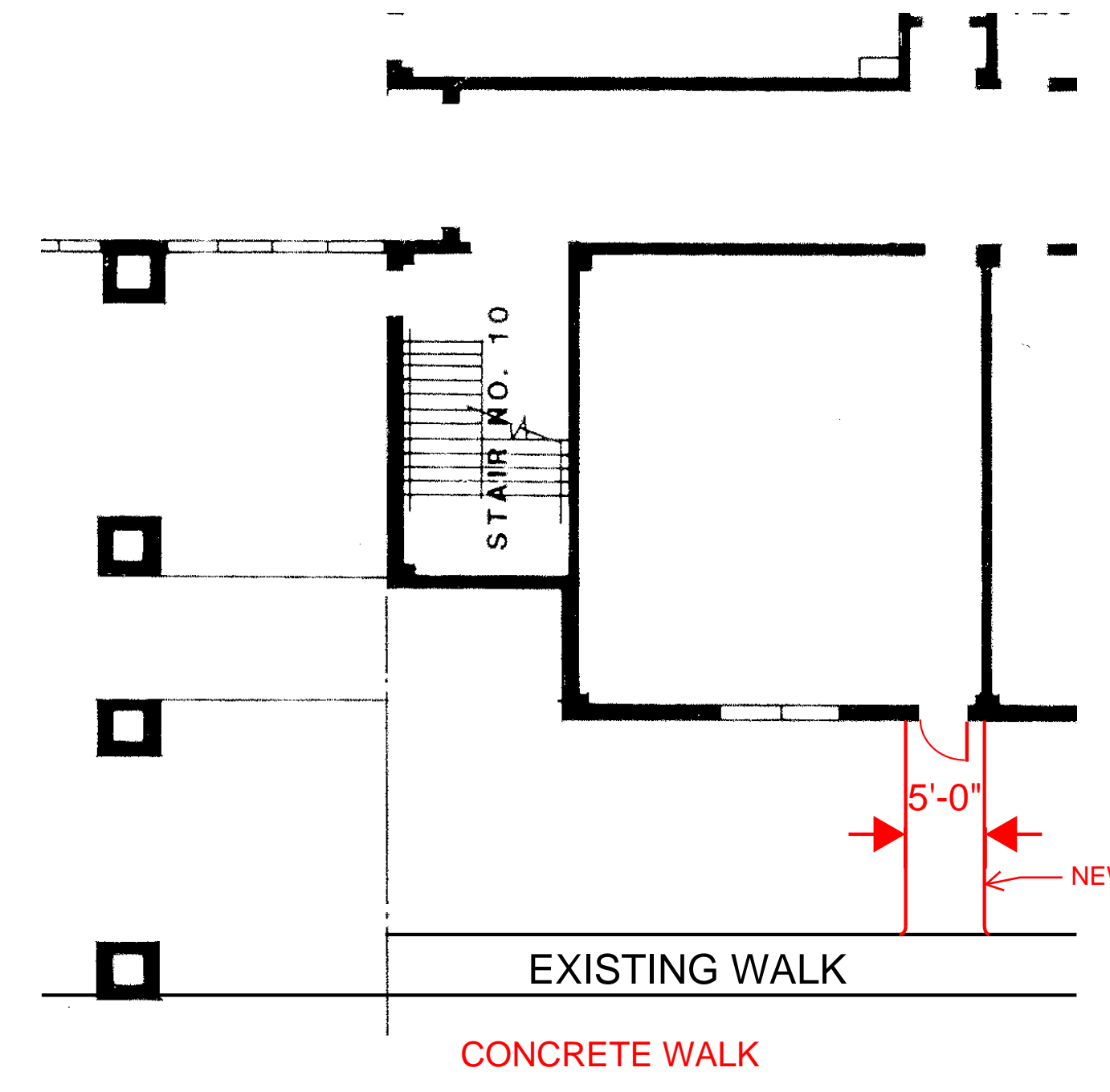
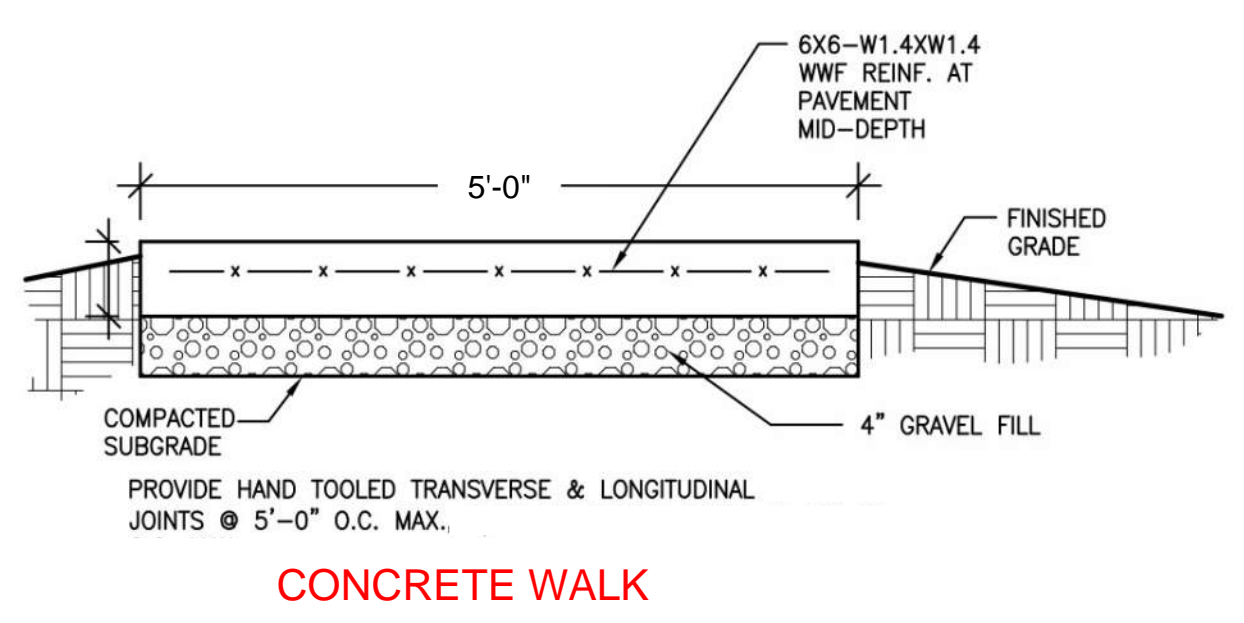
DivTech Project # 20-02		
DWG	GA-2	REVISION D



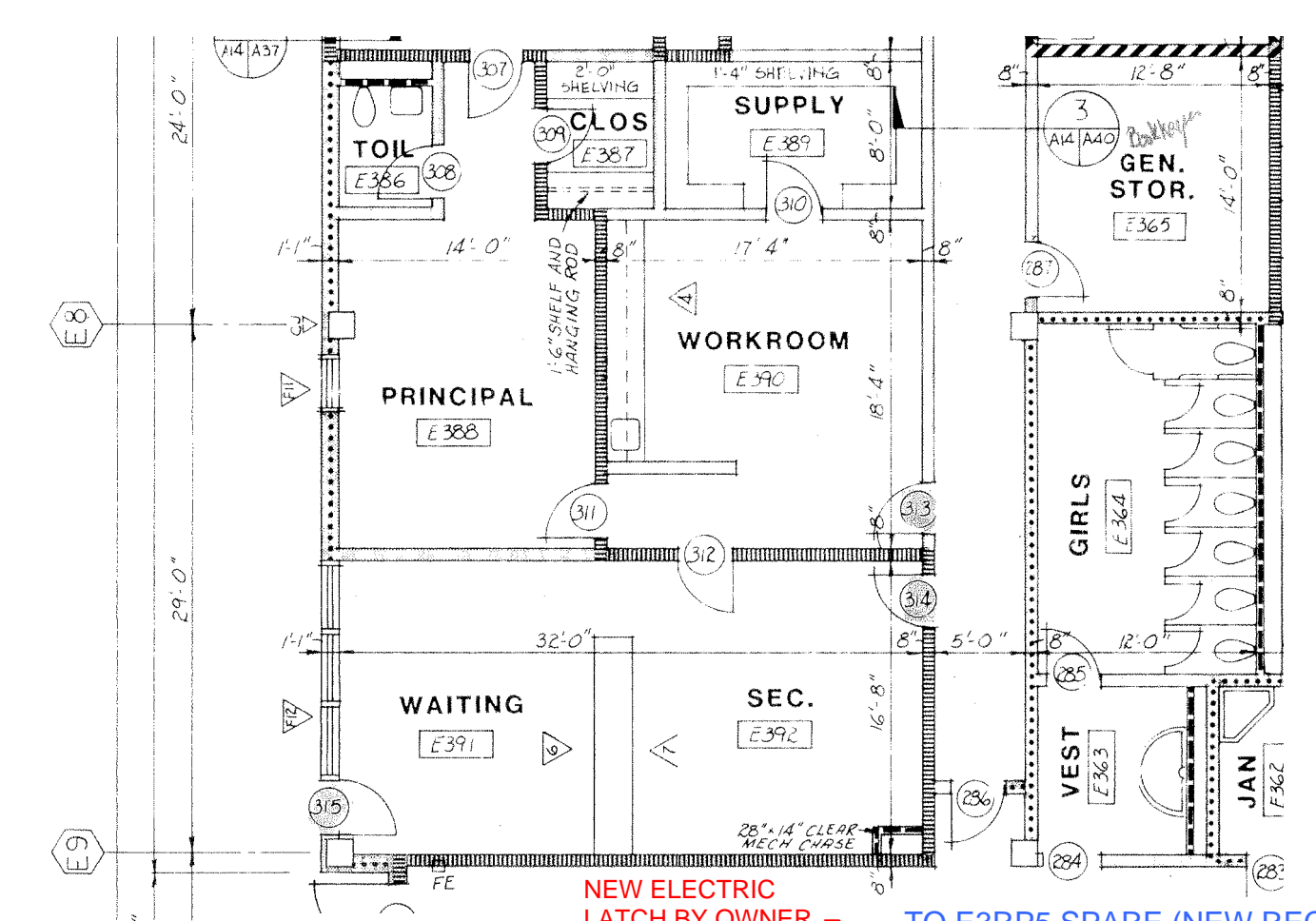
**3'-0" X 6'-8" X 1 3/4" NON RATED
HM STEEL DOOR & FRAME**



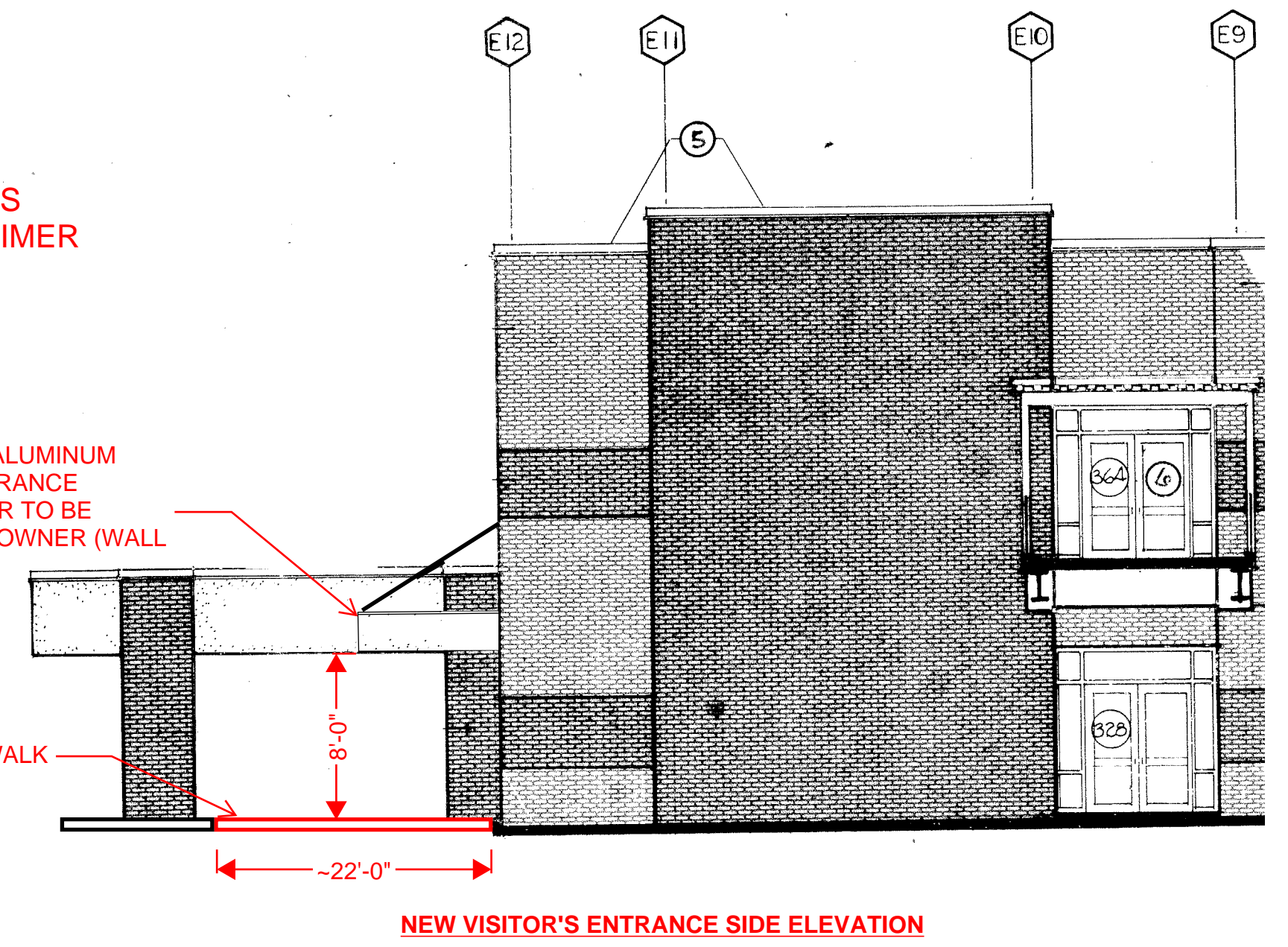
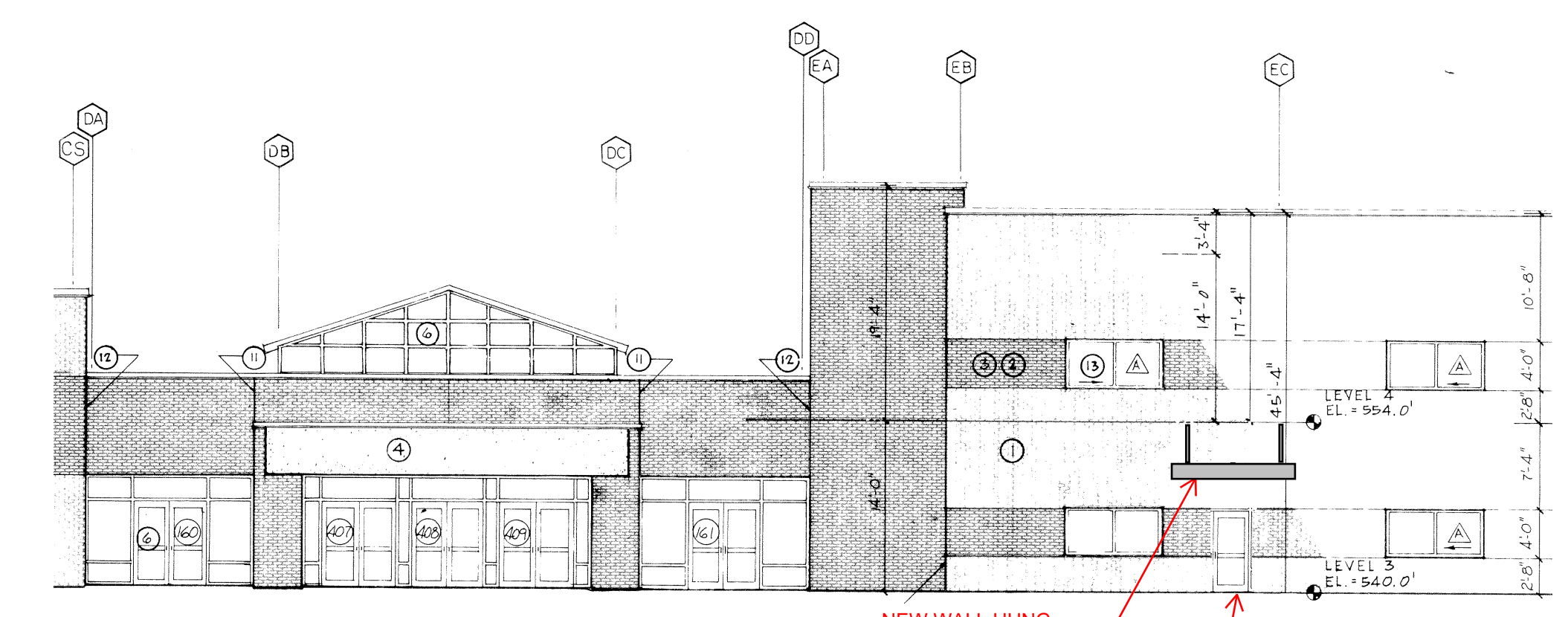
**80" WIDE X 60" PROJECTION IMPERIAL
MARQUEE ALUMINUM AWNING WITH 8" WIDE
FLAT PANELS, SQUARE TUBING OVERHEAD
BRACES, EXTRUDED ALUMINUM 6" TALL
GUTTER AND DOWNSPOUT KIT AS
MANUFACTURED BY GENERAL AWNINGS, LLC
OR APPROVED EQUAL (POWDERCOATED
COLOR TO BE SELECTED BY OWNER)**



Screw Anchors KH-EZ CRC



**LITHONIA LIGHTING EXR EL M6 120
VOLT LED EXIT LIGHT W/ BATTERY
BACKUP (CONNECT WIRING TO
EXISTING EXIT LIGHT CIRCUIT)**



FAIRFIELD CENTRAL HIGH SCHOOL
NOT TO SCALE



105 SILVER PINE CT
GREER, SC 2950



GEIGER ELEMENTARY SCHOOL
150 TM COOK LANE
RIDGWAY, SC 29130



FAIRFIELD COUNTY SCHOOLDISTRICT
1226 US-321 BYP
WINNSBORO, SC 29180

© 2020 DivTech

THIS DRAWING AND THE DESIGN THEREON ARE THE PROPERTY OF

DivTech

ANY REPRODUCTION OR UNAUTHORIZED USE THEREOF WITHOUT WRITTEN PERMISSION MAY BE SUBJECT TO LEGAL ACTION.

REVISIONS

NO.	DATE	DESCRIPTION
A	07/16/2020	ISSUED FOR BIDS
B	07/24/2020	ADDENDUM 1
C	07/28/2020	ADDENDUM 2
D	07/31/2020	ADDENDUM 3

ITEM	DATE	BY
DESIGN	07/16/2020	MAG
DRAWN	07/16/2020	MAG
CHECKED	07/16/2020	MAG
APPR		
CLIENT APP		

ENTRYWAY UPGRADES

DivTech Project # 20-02

DWG **GA-7** REVISION **D**

NEW 3'-0" X 6'-8" X 1 3/4" HOLLOW METAL STEEL SECURITY DOORS W/ LOCKING REMOVEABLE CENTER MULLION
NOMINAL 7'-0" OVERALL ASSEMBLY HEIGHT
ASSEMBLY FRAME NOMINAL 2" WIDE X 5" DEEP W/ WELDED STEEL REINFORCED HEADER BRACING

(ELECTRIC STRIKE LOCK ON RIGHT SIDE DOOR BY OWNER)

DOOR HARDWARE SHALL INCLUDE :
VON DUPRIN 99 PANIC BAR
LCN 4040XP DOOR CLOSER W/ HOLD OPEN CUSH-N-STOP ARM (HCUSH)
4 1/2" HEAVY DUTY BALL BEARING SS HINGES, BOMMER OR EQUAL
THRESHOLDS (NOT REQUIRED)
CORBIN RUSWIN LOCK CYLINDERS THAT ARE RIM TYPE D2, 6 PIN
HANDLES SHALL BE D SHAPE PULL TYPE W/ ESCUTCHEON
DOORS SHALL BE AS MANUFACTURED BY PIONEER, STEELCRAFT, KAWNEER OR APPROVED EQUAL



NEW DOUBLE SECURITY DOOR ASSEMBLY (SIMILAR TO ABOVE)
(COLOR TO BE SELECTED BY OWNER)



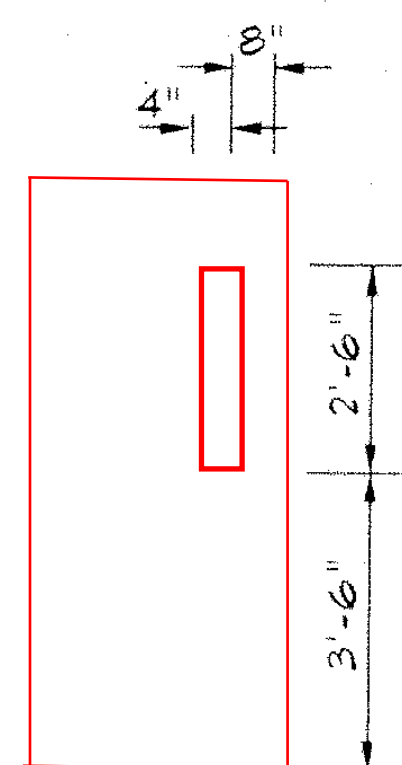
LITHONIA LIGHTING EXR EL M6 120 VOLT LED EXIT LIGHT W/ BATTERY BACKUP (CONNECT WIRING TO EXISTING EXIT LIGHT CIRCUIT)

REPAINT BOTH SIDES OF EXISTING FRAME WITH 2 COATS OF SW DURATION GLOSS, COLOR SELECTED BY OWNER

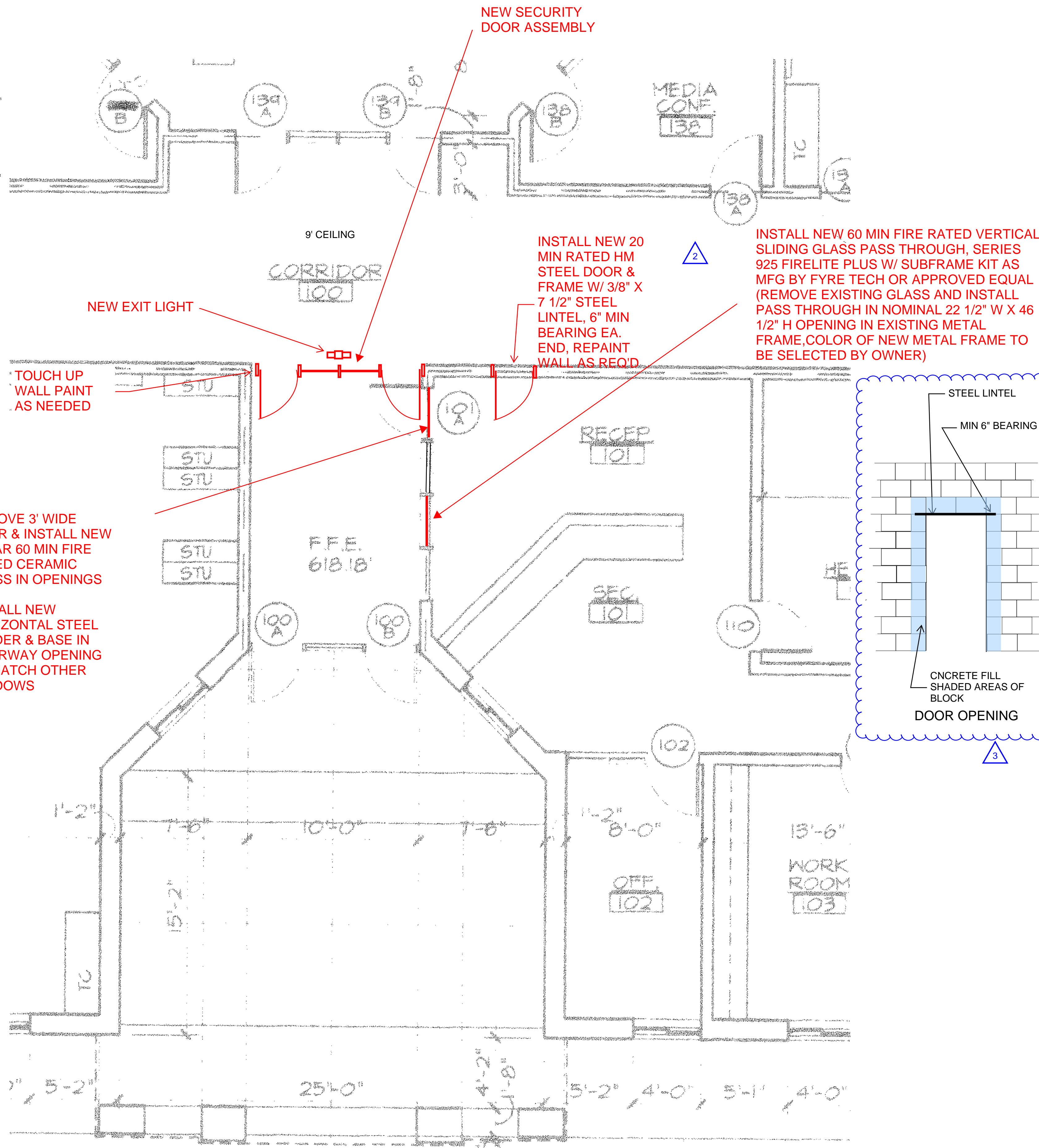
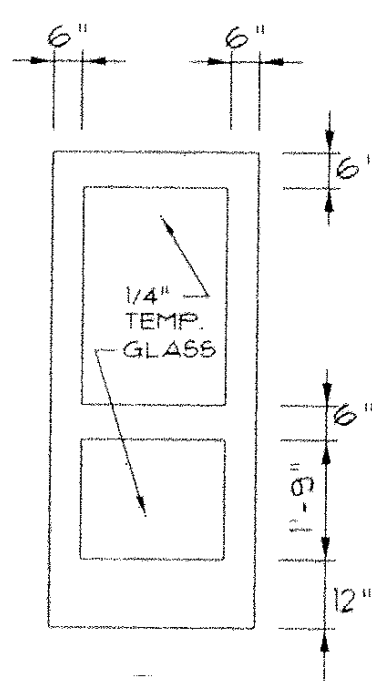
MODIFY FRAME AS REQUIRED TO ACCEPT NEW GLASS



DOOR HARDWARE & FINISH TO MATCH EXISTING



20 MIN RATED HM STEEL DOOR & FRAME (TO MATCH EXISTING)



GEIGER ELEMENTARY SCHOOL
NOT TO SCALE