

SYMBOLS LEGEND

VOICE/DATA OUTLETS & DEVICES

- Ⓞ DATA OUTLET (CEILING MOUNTED)
- Ⓜ DATA OUTLET (FLOOR MOUNTED)
- ▽ MULTI-PORT DATA OUTLET
- ▽ SINGLE-PORT DATA OUTLET
- ▽ SINGLE-PORT VOICE OUTLET
- ▽ MULTI-PORT DATA / VOICE OUTLET
- ▽ 4 & 6 PORT NETWORK DEVICE OUTLET
- Ⓜ WIRELESS ACCESS POINT (WAP)
- Ⓜ COAX TELEVISION OUTLET

CABINETS, RACKS, & PANELS

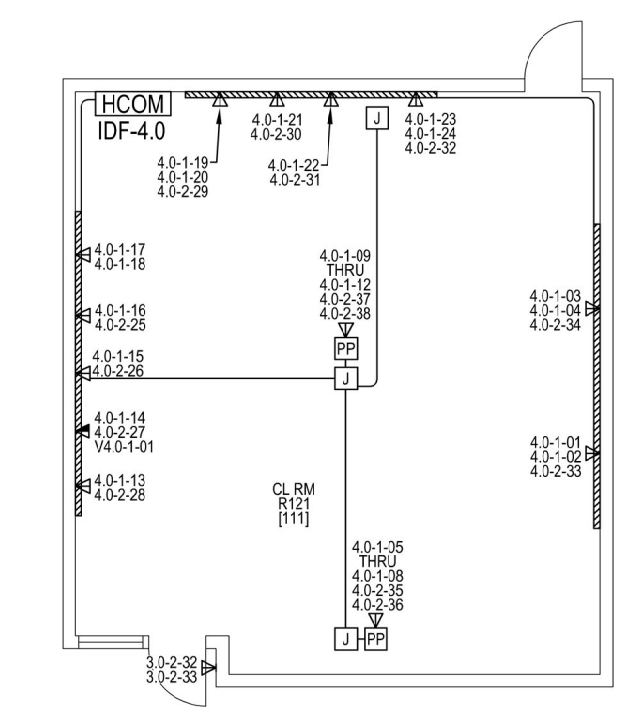
- Ⓜ MDF MAIN DISTRIBUTION FRAME
- Ⓜ EDP PORTABLE CABINET
- Ⓜ HCOM HOLOCOM CABINET
- Ⓜ CR CHATSWORTH CABINET
- Ⓜ FDC FIBER DISTRIBUTION CAN (PORTABLES)
- Ⓜ DMARC DMARC/MOE LOCATION
- Ⓜ BACKBONE RISER RACK (PORTABLES)

PATHWAYS / BACKBONE

- Ⓜ AERIAL / OVERHEAD FIBER CABLE
- Ⓜ LOGICAL FIBER CONNECTION
- Ⓜ INTERIOR / ON ROOF CONDUIT
- Ⓜ UNDERGROUND CONDUIT
- Ⓜ AERIAL COAX CABLE
- Ⓜ CONDUIT SLEEVE THROUGH WALL
- Ⓜ 30' UTILITY POLE & MAST
- Ⓜ FIBER QUICK DISCONNECT
- Ⓜ POWER POLE
- Ⓜ JUNCTION BOX
- Ⓜ UNDERGROUND QUAZITE BOX
- Ⓜ SURFACE MOUNTED RACEWAY
- Ⓜ SURFACE MOUNTED RACEWAY

SECURITY / SURVEILLANCE / ACCESS

- Ⓜ FACP FIRE ALARM CONTROL PANEL
- Ⓜ IAP INTRUSION ALARM PANEL
- Ⓜ FPCD FIXED POSITION CCTV CAMERA
- Ⓜ MLSC MULTI LENS CCTV CAMERA
- Ⓜ 180° 180° CCTV CAMERA
- Ⓜ 360° 360° FISHEYE CCTV CAMERA
- Ⓜ DCPS DOOR POSITION CONTACT SWITCH
- Ⓜ PIR PIR MOTION DETECTOR FOR INTRUSION
- Ⓜ WMR WALL MOUNTED CARD READER
- Ⓜ CRI CARD READER INTERFACE ABOVE CEILING
- Ⓜ EAC ELECTRIC STRIKE FOR ACCESS CONTROL
- Ⓜ RSES REQUEST TO EXIT SENSOR (PIR)
- Ⓜ CLD CLUIDLINK
- Ⓜ ACS ACCESS CONTROL PANEL (CONTROLLER)
- Ⓜ VIC VIDEO INTERCOM



DETAIL 1

ALBUQUERQUE PUBLIC SCHOOLS

TECHNOLOGY DEPARTMENT
DATA COMMUNICATIONS
 930 OAK STREET SE, SUITE-B
 ALBUQUERQUE, NEW MEXICO 87106

BELLEHAVEN ELEMENTARY SCHOOL
 8701 PRINCESS JEANNE AVE. NE.
 ALBUQUERQUE, NM 87112

NO.	DATE	DESCRIPTION
10	01/07/2020	REVISED AS-BUILT-SOW 9397
9	03/30/2017	REVISED AS-BUILT-SOW 5270
8	08/03/2016	REVISED AS-BUILT-SOW 5019
7	03/23/2016	REVISED AS-BUILT-SOW 5034
6	08/27/2012	REVISED AS-BUILT-SOW 3737

CHECKED BY: D.AHLGRIM
 DRAWN BY: C.STUP
 FILE NAME: BELLEHAVEN_9397.DWG
 SCALE: 1" = 20'-0"

SHEET TITLE:
SPECIAL SYSTEMS SITE / FLOOR PLAN
ES-1/TN-1