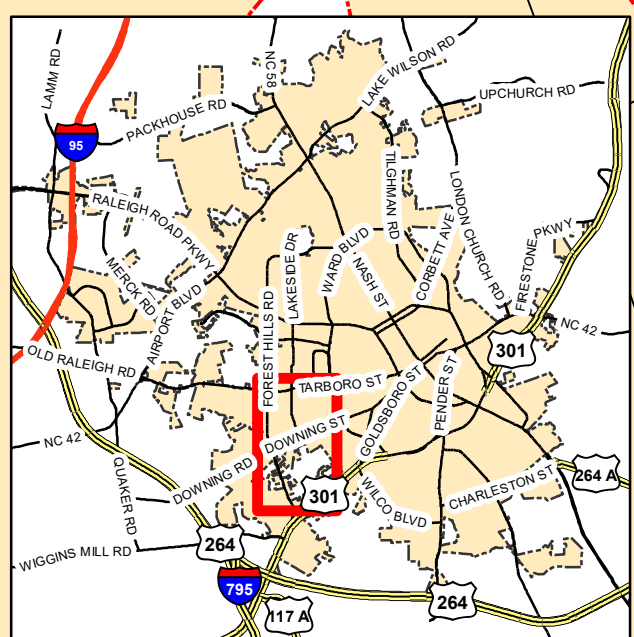
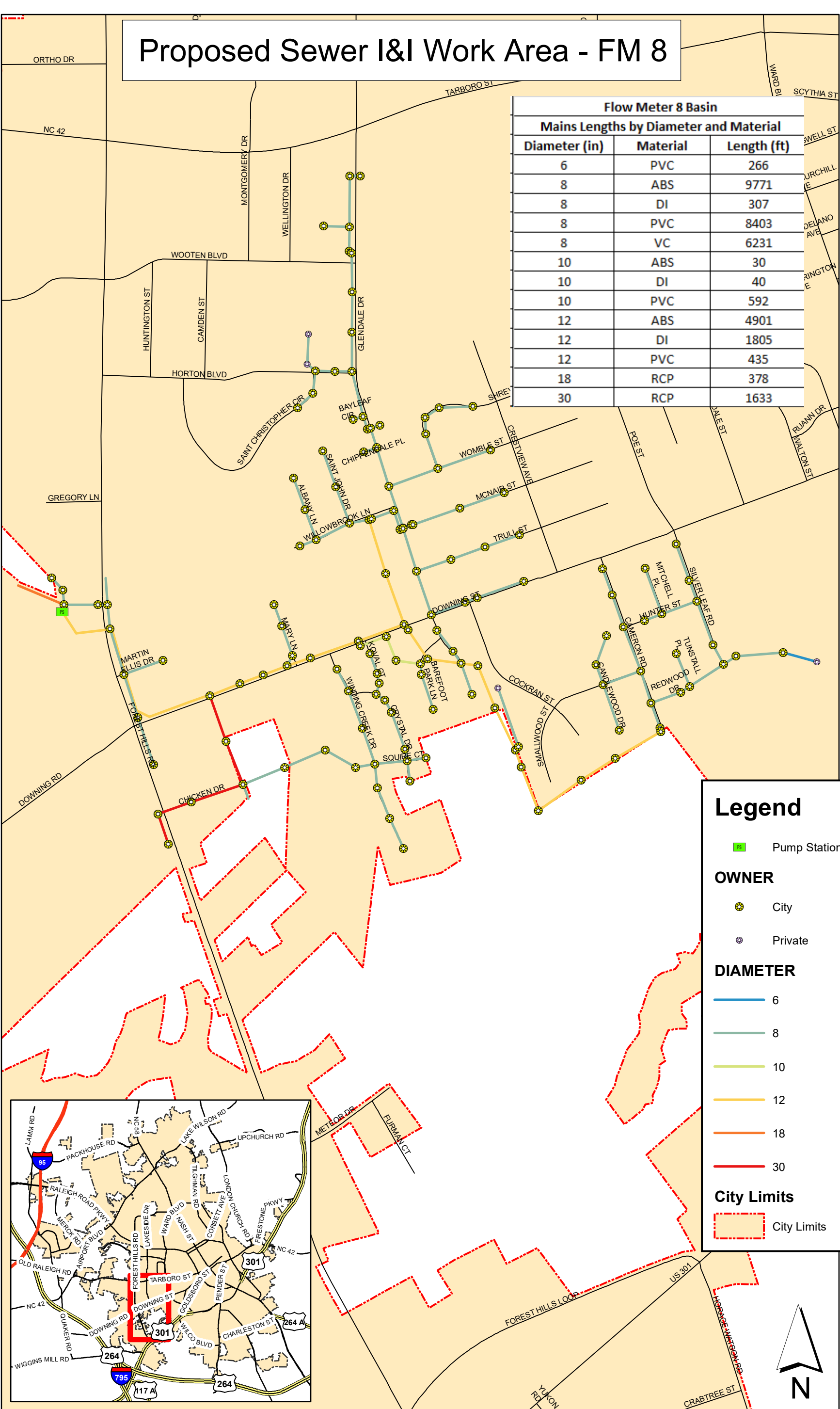


# Proposed Sewer I&I Work Area - FM 8

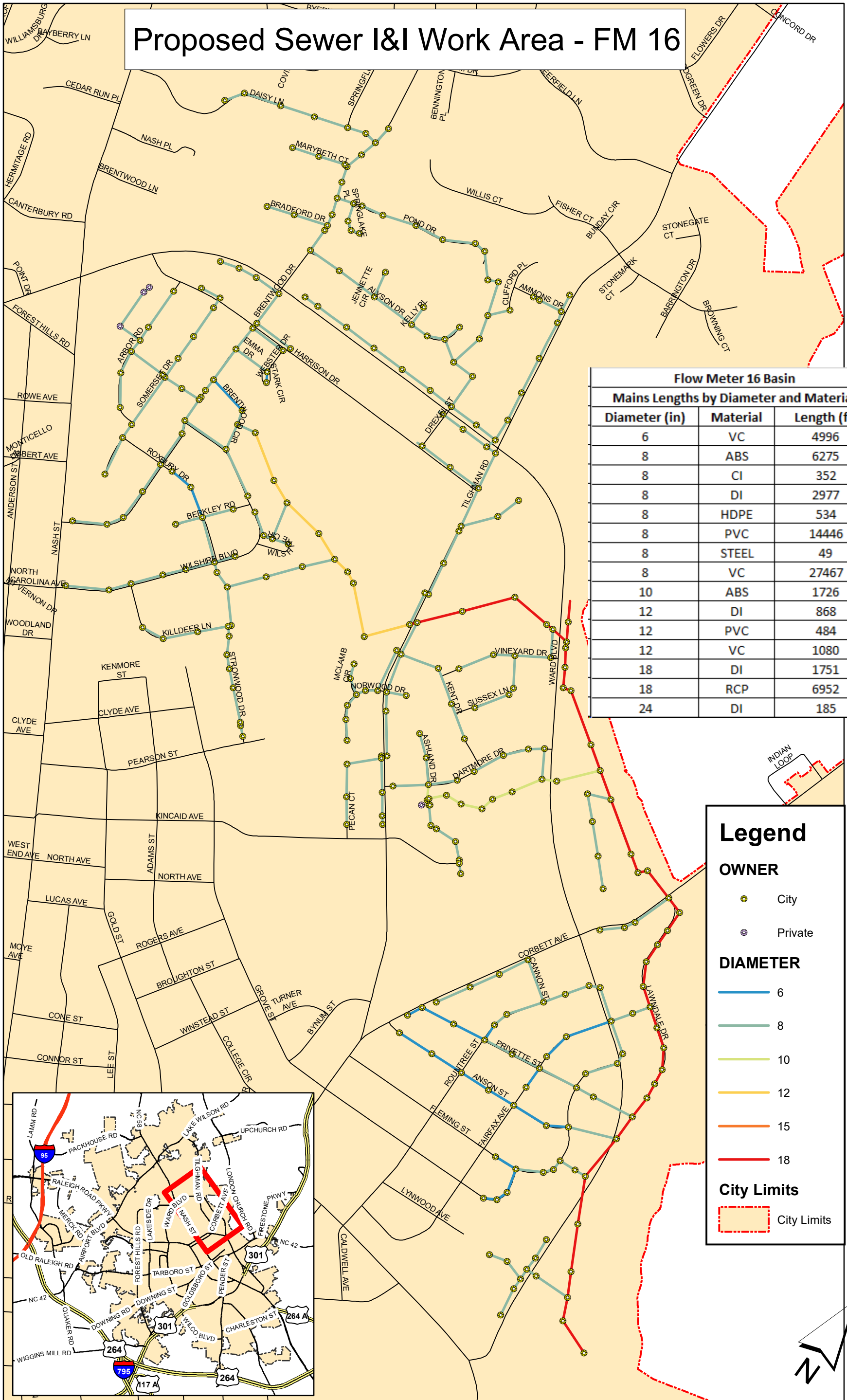
Flow Meter 8 Basin		
Mains Lengths by Diameter and Material		
Diameter (in)	Material	Length (ft)
6	PVC	266
8	ABS	9771
8	DI	307
8	PVC	8403
8	VC	6231
10	ABS	30
10	DI	40
10	PVC	592
12	ABS	4901
12	DI	1805
12	PVC	435
18	RCP	378
30	RCP	1633

### Legend

- Pump Station
- OWNER**
- City
- Private
- DIAMETER**
- 6
- 8
- 10
- 12
- 18
- 30
- City Limits**
- City Limits



# Proposed Sewer I&I Work Area - FM 16



Flow Meter 16 Basin		
Mains Lengths by Diameter and Material		
Diameter (in)	Material	Length (ft)
6	VC	4996
8	ABS	6275
8	CI	352
8	DI	2977
8	HDPE	534
8	PVC	14446
8	STEEL	49
8	VC	27467
10	ABS	1726
12	DI	868
12	PVC	484
12	VC	1080
18	DI	1751
18	RCP	6952
24	DI	185

### Legend

**OWNER**

- City
- Private

**DIAMETER**

- 6
- 8
- 10
- 12
- 15
- 18

**City Limits**

- City Limits

# Proposed Sewer I&I Work Area - FM 17

Flow Meter 17 Basin		
Mains Lengths by Diameter and Material		
Diameter (in)	Material	Length (ft)
5	VC	419
6	DI	428
6	PVC	261
6	VC	25922
8	ABS	73
8	DI	373
8	HDPE	3133
8	PVC	20981
8	VC	30416
10	PVC	1268
10	VC	4150
12	DI	19
12	PVC	1534
12	VC	8859
15	RCP	359

### Legend

**SS Manholes**

**OWNER**

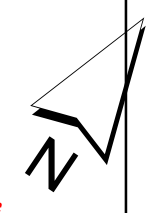
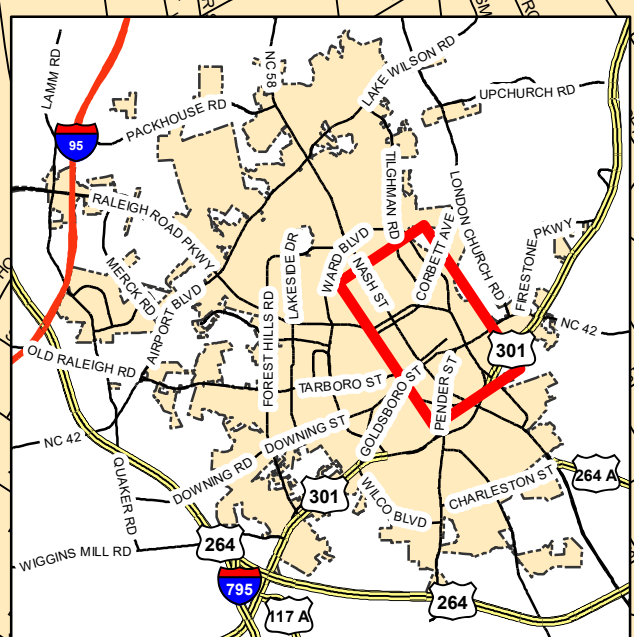
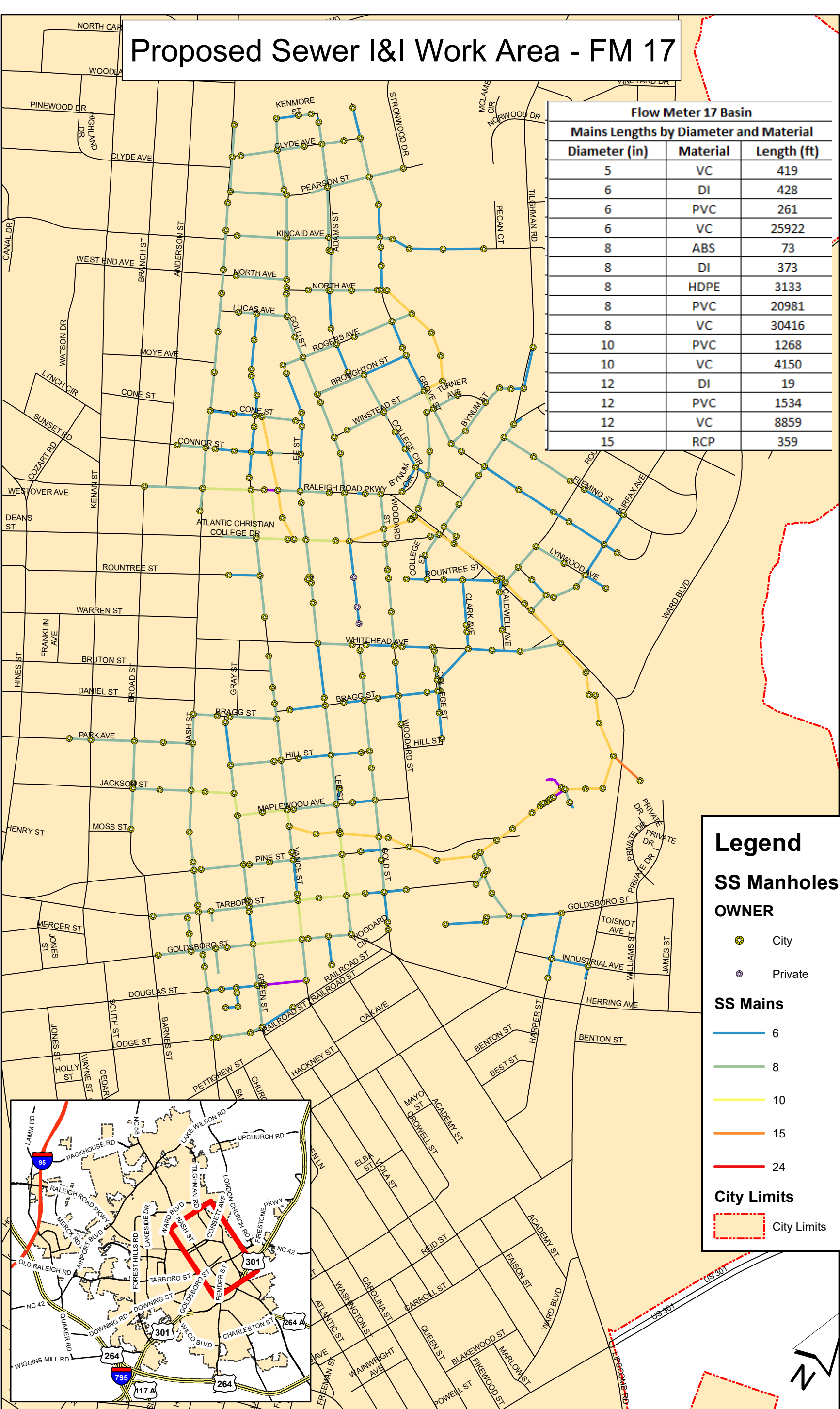
- City
- Private

**SS Mains**

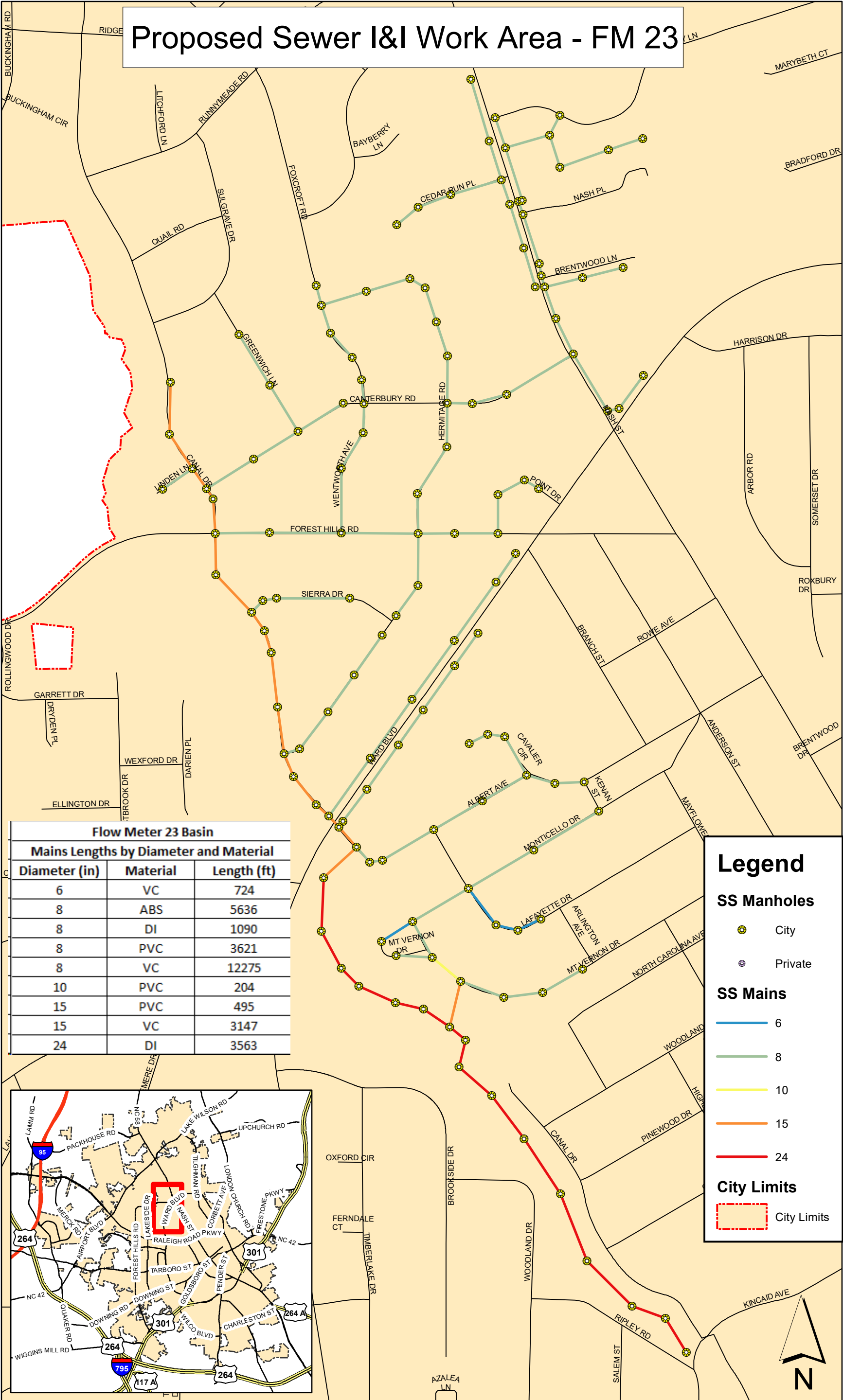
- 6
- 8
- 10
- 15
- 24

**City Limits**

- City Limits



# Proposed Sewer I&I Work Area - FM 23



**Flow Meter 23 Basin**

**Mains Lengths by Diameter and Material**

Diameter (in)	Material	Length (ft)
6	VC	724
8	ABS	5636
8	DI	1090
8	PVC	3621
8	VC	12275
10	PVC	204
15	PVC	495
15	VC	3147
24	DI	3563

**Legend**

**SS Manholes**

- City
- Private

**SS Mains**

- 6
- 8
- 10
- 15
- 24

**City Limits**

- City Limits

