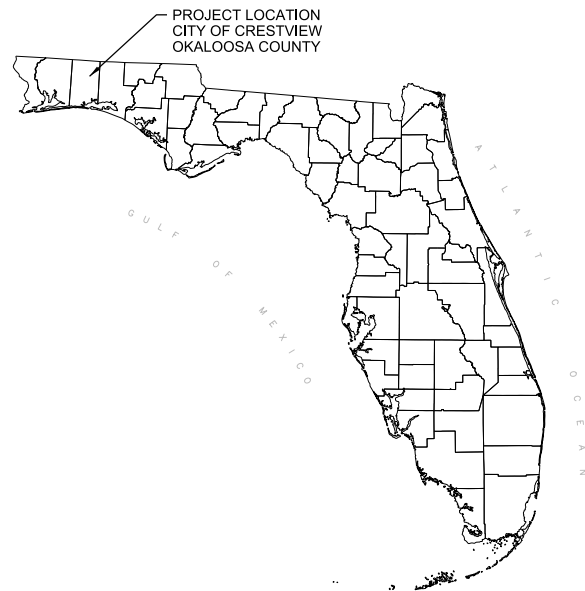


CONTRACT DOCUMENTS  
FOR THE CONSTRUCTION OF THE

# FOXWOOD ESTATES LOW PRESSURE SEWER SYSTEM PROJECT - PHASE 1 FORCE MAINS



LOCATION IN FLORIDA  
NTS



PREPARED FOR  
CITY OF CRESTVIEW  
FLORIDA

VOLUME 2 OF 2  
DRAWINGS



LOCATION MAP  
NTS

For information regarding  
this project, contact:

Kevin Waddell, PE  
25 W Cedar Street, Suite 350  
Pensacola, FL 32502  
Phone: 850-941-7282

# Jacobs

Project No. D3679600

OCTOBER 2023

## BID DOCUMENTS

# INDEX OF DRAWINGS

# GENERAL SITE NOTES:

- CONTRACTOR TO OBTAIN OKALOOSA COUNTY AND CITY OF CRESTVIEW UTILITY PERMITS AND SUBMIT A MAINTENANCE OF TRAFFIC PLAN FOR WORK IN THE RIGHT-OF-WAYS.
- STAGING AREA SHALL BE FOR CONTRACTOR'S EMPLOYEE PARKING, CONTRACTOR'S TRAILERS, AND ON-SITE STORAGE OF MATERIALS.
- CONTRACTOR SHALL NOT DISTURB AREAS OUTSIDE EXISTING RIGHTS-OF-WAY OR TEMPORARY CONSTRUCTION EASEMENTS.
- CONTRACTOR TO ADJUST ALL EXISTING UTILITY CASTINGS INCLUDING VALVE BOXES, MANHOLES, HAND HOLES, PULL BOXES, INLETS AND SIMILAR STRUCTURES WITHIN PAVED AREAS TO MATCH FLUSH WITH FINISHED GRADE.
- THE CONTRACTOR SHALL REPAIR AND RESTORE EXISTING PAVEMENT, SIDEWALKS, CURBS, DRIVEWAYS, PIPES, IRRIGATION LINES, CONDUIT, CABLES, ETC. AS A RESULT OF THE CONSTRUCTION ACTIVITIES.
- NO DEBRIS OR CONSTRUCTION MATERIALS WILL BE BURIED OR DISPOSED OF ONSITE. ALL SUCH MATERIAL SHALL BE DISPOSED OF IN ACCORDANCE WITH LOCAL AND STATE REGULATIONS.
- SEE SEPARATE VOLUME FOR PROJECT SPECIFICATIONS.
- DRAWINGS WERE PREPARED USING SURVEY DATA COLLECTED BY RUBEN SURVEYING AND MAPPING ALONG WITH GIS DATA AVAILABLE FROM THE CITY. ADDITIONAL MAPPING HAS BEEN ADDED FROM AS-BUILT DATA AND SUPPLEMENT SURVEY FROM OTHER PROJECT INFORMATION IN THE AREA. EXISTING CONDITIONS MAY VARY FROM THOSE SHOWN ON THESE PLANS. THE CONTRACTOR SHALL VERIFY EXISTING CONDITIONS AND ADJUST WORK PLAN ACCORDINGLY PRIOR TO BEGINNING CONSTRUCTION. NOTIFY ENGINEER AND OWNER OF DISCREPANCIES AND CONFLICTS.
- EXISTING TOPOGRAPHY, STRUCTURES, AND SITE FEATURES ARE SHOWN SCREENED AND/OR LIGHT-LINED. NEW FINISH GRADE, STRUCTURES, AND SITE FEATURES ARE SHOWN HEAVY-LINED.
- MAINTAIN, RELOCATE, OR REPLACE EXISTING SURVEY MONUMENTS, CONTROL POINTS, AND STAKES WHICH ARE DISTURBED OR DESTROYED. PERFORM THE WORK TO PRODUCE THE SAME LEVEL OF ACCURACY AS THE ORIGINAL MONUMENT(S) IN A TIMELY MANNER, AND AT THE CONTRACTOR'S EXPENSE.
- COORDINATES AND DIMENSIONS SHOWN FOR ROADWAY IMPROVEMENTS ARE TO FACE OF CURB OR EDGE OF PAVEMENT.
- PROVIDE TEMPORARY FENCING AS NECESSARY TO MAINTAIN SECURITY AT ALL TIMES.
- ELEVATIONS GIVEN ARE TO FINISH GRADE UNLESS OTHERWISE SHOWN.
- SLOPE UNIFORMLY BETWEEN CONTOURS AND SPOT ELEVATIONS SHOWN.
- CONTRACTOR SHALL BE RESPONSIBLE FOR IMPLEMENTING AND MAINTAINING EROSION CONTROL DEVICES DURING CONSTRUCTION. EROSION CONTROL DEVICES (3125-165) AND (3125-186) ARE THE MINIMUM REQUIRED.
- CONTRACTOR SHALL TAKE ALL OTHER MEASURES TO POSITIVELY PRECLUDE EROSION MATERIALS FROM LEAVING THE SITE. CONTRACTOR TO SUBMIT EROSION CONTROL PLAN.
- THE CONTRACTOR SHALL NOTIFY SUNSHINE 811 BEFORE BEGINNING WORK AS REQUIRED IN ACCORDANCE WITH CHAPTER 556 F.S.
- CONTRACTOR SHALL RESTORE ALL DISTURBED AREAS TO ORIGINAL OR BETTER CONDITION. DISTURBED GRASSED AREAS ARE TO BE RESTORED WITH SOD OF SAME ORIGINAL SPECIES.

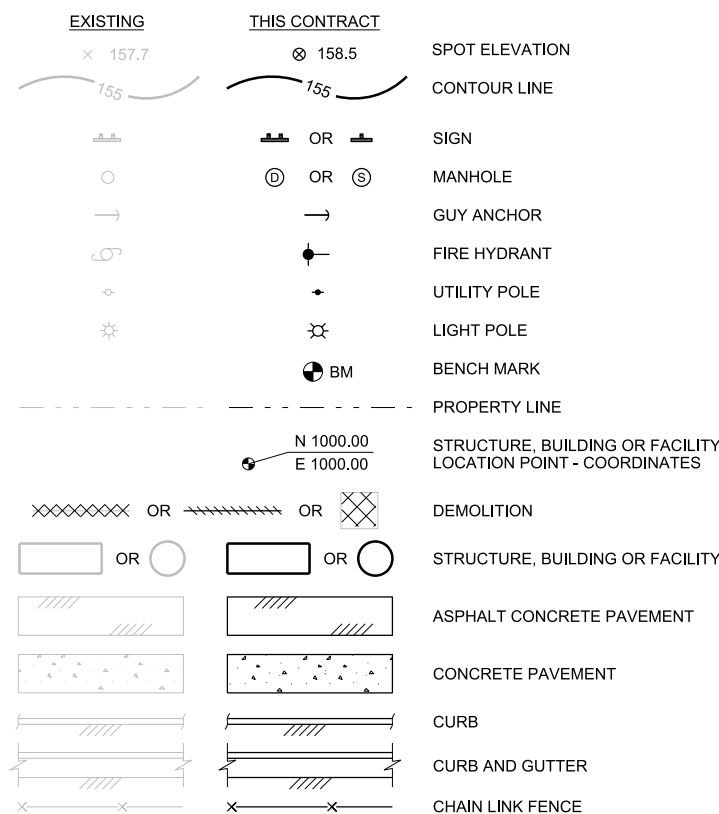
# GENERAL YARD PIPING AND UTILITIES NOTES:

- EXISTING UNDERGROUND UTILITIES OBTAINED FROM AS-BUILTS AND FROM FIELD SURVEY. CONTRACTOR SHALL FIELD VERIFY DEPTH AND LOCATION PRIOR TO EXCAVATION. PROTECT ALL EXISTING UTILITIES DURING CONSTRUCTION.
- UNLESS OTHERWISE SHOWN ALL PIPING SHALL HAVE A MINIMUM OF 3'-0" COVER.
- ALL PIPES SHALL HAVE A CONSTANT SLOPE BETWEEN INVERT ELEVATIONS UNLESS A FITTING IS SHOWN.
- FOR TRENCHING AND BACKFILL, SEE (3123-110) .
- FOR SURFACE RESTORATION OF ASPHALT CONCRETE, SEE (3123-115)
- MINIMUM ALLOWABLE CLEARANCE BETWEEN PIPES AT CROSSINGS SHALL BE 3". CONTROLLED DENSITY FILL SUPPORT IS REQUIRED, SEE (3123-120)
- ALL PROPOSED UTILITY IMPROVEMENTS INSTALLED SHALL BE ELECTRONICALLY DETECTABLE UPON COMPLETION OF INSTALLATION.

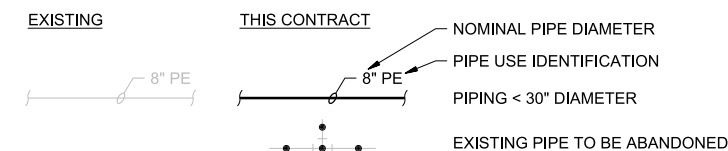
# GENERAL INFORMATION

- FOR ABBREVIATIONS NOT LISTED, SEE ASME Y14.38 "ABBREVIATIONS AND ACRONYMS: PUBLICATION AS DISTRIBUTED BY THE AMERICAN SOCIETY OF MECHANICAL ENGINEERS (ASME).
- DESIGN DETAILS ARE INTENDED TO BE TYPICAL AND SHALL APPLY TO SIMILAR SITUATIONS OCCURRING THROUGHOUT THE PROJECT, WHETHER OR NOT THEY ARE INDIVIDUALLY CALLED OUT.
- VERIFY FINAL OPENING DIMENSIONS IN WALLS, SLABS, AND DECKS WITH OTHER DISCIPLINE DRAWINGS PRIOR TO CONSTRUCTION OF THESE ELEMENTS.
- DO NOT CUT OR MODIFY STRUCTURAL MEMBERS FOR PIPES, DUCTS, ETC, UNLESS SPECIFICALLY DETAILED OR APPROVED IN WRITING BY THE ENGINEER.
- INFORMATION (DETAILING, DIMENSIONS, CONFIGURATIONS, AND ELEVATIONS, ETC.) OF EXISTING CONSTRUCTION SHOWN REFLECTS AVAILABLE EXISTING DESIGN DOCUMENTS. AND DOES NOT NECESSARILY REPRESENT THE AS- CONSTRUCTED CONDITIONS. THE CONTRACTOR SHALL FIELD VERIFY DIMENSIONS, ELEVATIONS AND DETAILING OF THE EXISTING STRUCTURES PRIOR TO UNDERTAKING ANY WORK THAT IS AFFECTED BY THE EXISTING STRUCTURE.

# CIVIL LEGEND



# YARD PIPING LEGEND



25 W CEDAR STREET, SUITE 350  
PENSACOLA, FLORIDA 32502

FOXWOOD ESTATES  
LOW PRESSURE SEWER SYSTEM  
CITY OF CRESTVIEW  
CRESTVIEW, FL



GENERAL  
INDEX TO DRAWINGS  
GENERAL, CIVIL LEGEND AND NOTES

THIS DOCUMENT AND THE IDEAS AND DESIGNS INCORPORATED HEREIN, AS AN INSTRUMENT OF PROFESSIONAL SERVICE, IS THE PROPERTY OF JACOBS AND IS NOT TO BE USED, IN WHOLE OR IN PART, FOR ANY OTHER PROJECT WITHOUT THE WRITTEN AUTHORIZATION OF JACOBS.

BID DOCUMENTS

VERIFY SCALE

BAR IS ONE INCH ON ORIGINAL DRAWING.

DATE OCTOBER 2023

PROJ D3679600

DWG G-002

SHEET 2 of 25

Table with 6 columns and multiple rows containing abbreviations and their corresponding full names. Columns are numbered 1 through 6 at the top. Rows are grouped by letters A through D on the left side.

NOTES:
1. THIS IS A STANDARD LEGEND SHEET, THEREFORE SOME ABBREVIATIONS MAY APPEAR ON THIS SHEET AND NOT ON THE DRAWINGS.
2. CONTACT ENGINEER FOR ABBREVIATIONS NOT LISTED.

Project information block including:
- Project Name: FOXWOOD ESTATES LOW PRESSURE SEWER SYSTEM
- City: CITY OF CRESTVIEW, FL
- Address: 25 W CEDAR STREET, SUITE 350 PENSACOLA, FLORIDA 32502
- Scale: VERIFY SCALE
- Date: OCTOBER 2023
- Project Number: D3679600
- Drawing Number: G-003
- Sheet Number: 3 of 25

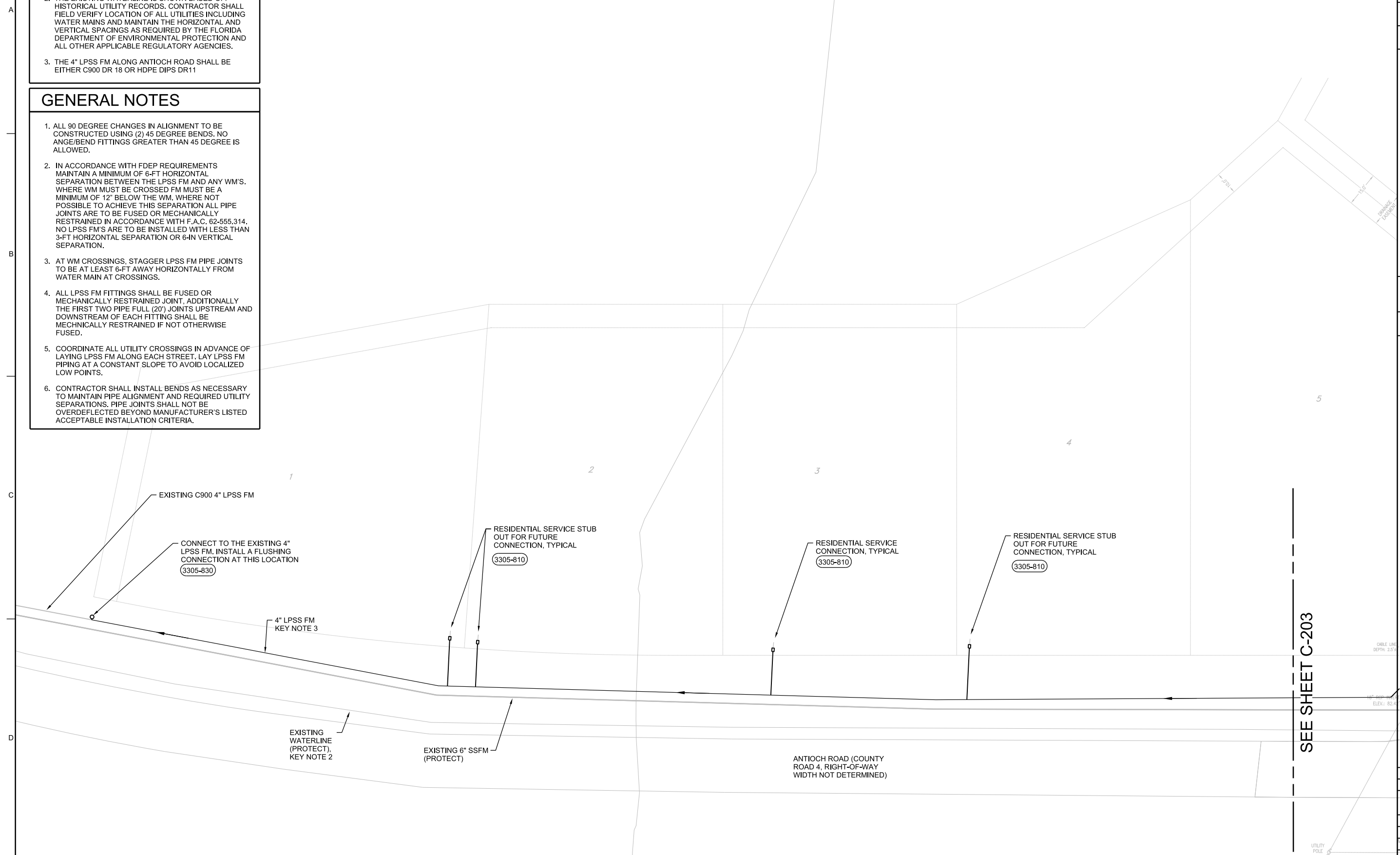
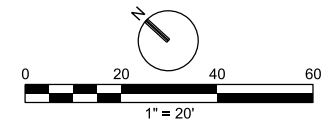


### SHEET KEY NOTES

- GRINDER PUMP STATIONS AND SERVICE LINES TO BE INSTALLED BY OTHERS. CONTRACTOR IS RESPONSIBLE FOR INSTALLING ALL LPSS FM PIPE, FITTINGS, AND APPURTENANCES SHOWN WITHIN THE RIGHT-OF-WAY UP TO AND INCLUDING A RESIDENTIAL SERVICE CONNECTION AT EACH RESIDENCE.
- THE EXISTING WATERLINE IS SHOWN BASED OFF HISTORICAL UTILITY RECORDS. CONTRACTOR SHALL FIELD VERIFY LOCATION OF ALL UTILITIES INCLUDING WATER MAINS AND MAINTAIN THE HORIZONTAL AND VERTICAL SPACINGS AS REQUIRED BY THE FLORIDA DEPARTMENT OF ENVIRONMENTAL PROTECTION AND ALL OTHER APPLICABLE REGULATORY AGENCIES.
- THE 4" LPSS FM ALONG ANTIOCH ROAD SHALL BE EITHER C900 DR 18 OR HDPE DIPS DR11

### GENERAL NOTES

- ALL 90 DEGREE CHANGES IN ALIGNMENT TO BE CONSTRUCTED USING (2) 45 DEGREE BENDS. NO ANGE/BEND FITTINGS GREATER THAN 45 DEGREE IS ALLOWED.
- IN ACCORDANCE WITH FDEP REQUIREMENTS MAINTAIN A MINIMUM OF 6-FT HORIZONTAL SEPARATION BETWEEN THE LPSS FM AND ANY WM'S. WHERE WM MUST BE CROSSED FM MUST BE A MINIMUM OF 12" BELOW THE WM. WHERE NOT POSSIBLE TO ACHIEVE THIS SEPARATION ALL PIPE JOINTS ARE TO BE FUSED OR MECHANICALLY RESTRAINED IN ACCORDANCE WITH F.A.C. 62-555.314. NO LPSS FM'S ARE TO BE INSTALLED WITH LESS THAN 3-FT HORIZONTAL SEPARATION OR 6-IN VERTICAL SEPARATION.
- AT WM CROSSINGS, STAGGER LPSS FM PIPE JOINTS TO BE AT LEAST 6-FT AWAY HORIZONTALLY FROM WATER MAIN AT CROSSINGS.
- ALL LPSS FM FITTINGS SHALL BE FUSED OR MECHANICALLY RESTRAINED JOINT. ADDITIONALLY THE FIRST TWO PIPE FULL (20') JOINTS UPSTREAM AND DOWNSTREAM OF EACH FITTING SHALL BE MECHANICALLY RESTRAINED IF NOT OTHERWISE FUSED.
- COORDINATE ALL UTILITY CROSSINGS IN ADVANCE OF LAYING LPSS FM ALONG EACH STREET. LAY LPSS FM PIPING AT A CONSTANT SLOPE TO AVOID LOCALIZED LOW POINTS.
- CONTRACTOR SHALL INSTALL BENDS AS NECESSARY TO MAINTAIN PIPE ALIGNMENT AND REQUIRED UTILITY SEPARATIONS. PIPE JOINTS SHALL NOT BE OVERDEFLECTED BEYOND MANUFACTURER'S LISTED ACCEPTABLE INSTALLATION CRITERIA.



NO.	DATE	DR	CHK	BY	APVD
		K. WADDELL	S. STATMAN	M. STICKLEY	K. WADDELL

25 W CEDAR STREET, SUITE 350  
PENSACOLA, FLORIDA 32502

FOXWOOD ESTATES  
LOW PRESSURE SEWER SYSTEM  
CITY OF CRESTVIEW  
CRESTVIEW, FL

**JACOBS**

CIVIL

**LOW-PRESSURE SSFM PLAN VIEW  
ANTIOCH ROAD**

VERIFY SCALE	BAR IS ONE INCH ON ORIGINAL DRAWING.
DATE	OCTOBER 2023
PROJ	D3679600
DWG	C-202
SHEET	5 of 25

REUSE OF DOCUMENTS: THIS DOCUMENT AND THE IDEAS AND DESIGNS INCORPORATED HEREIN, AS AN INSTRUMENT OF PROFESSIONAL SERVICE, IS THE PROPERTY OF JACOBS AND IS NOT TO BE USED, IN WHOLE OR IN PART, FOR ANY OTHER PROJECT WITHOUT THE WRITTEN AUTHORIZATION OF JACOBS.

BID DOCUMENTS



























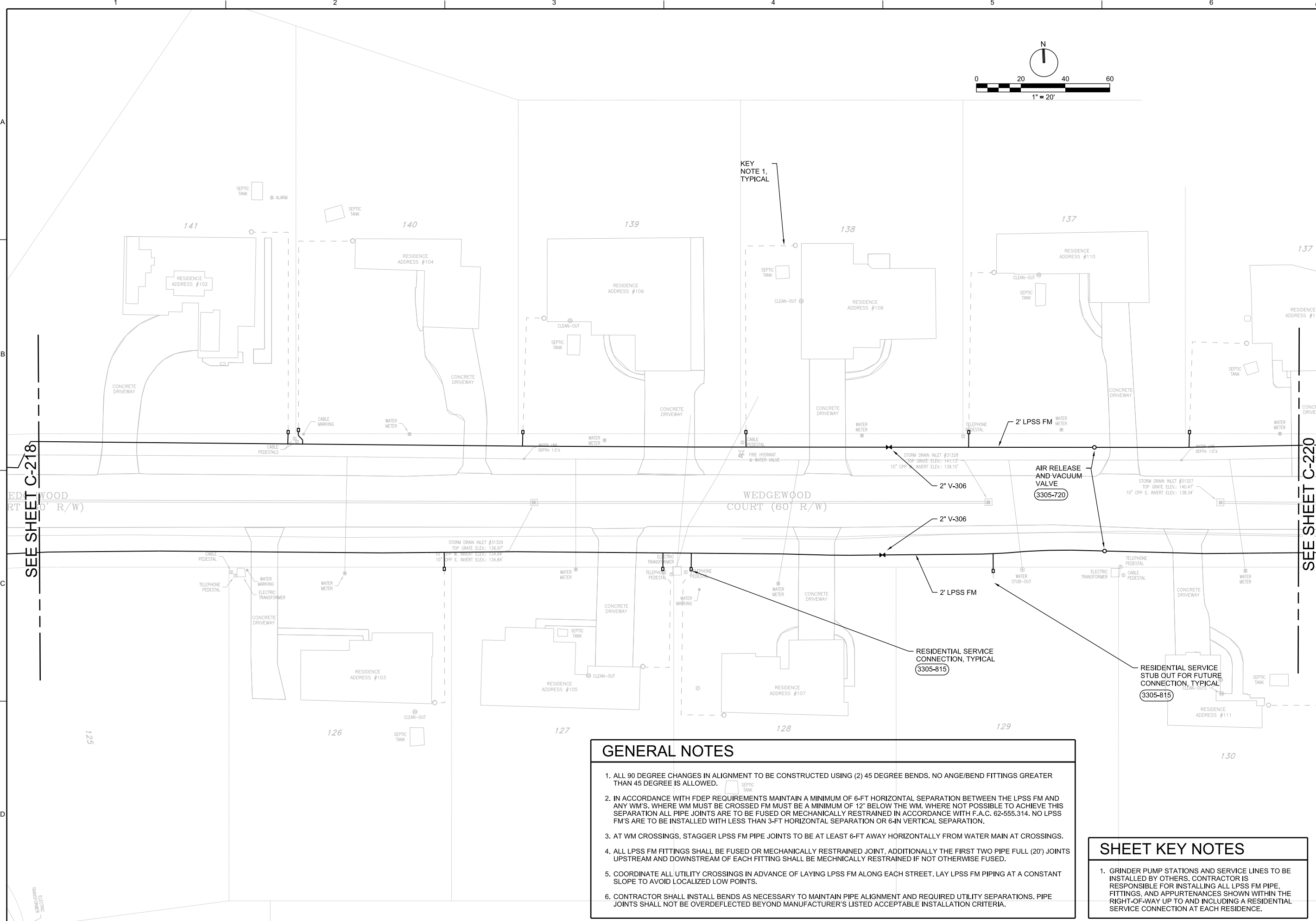
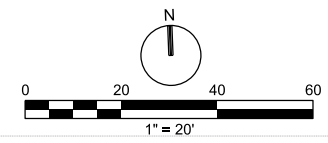












**GENERAL NOTES**

1. ALL 90 DEGREE CHANGES IN ALIGNMENT TO BE CONSTRUCTED USING (2) 45 DEGREE BENDS. NO ANGE/BEND FITTINGS GREATER THAN 45 DEGREE IS ALLOWED.
2. IN ACCORDANCE WITH FDEP REQUIREMENTS MAINTAIN A MINIMUM OF 6-FT HORIZONTAL SEPARATION BETWEEN THE LPSS FM AND ANY W.M'S. WHERE WM MUST BE CROSSED FM MUST BE A MINIMUM OF 12" BELOW THE WM. WHERE NOT POSSIBLE TO ACHIEVE THIS SEPARATION ALL PIPE JOINTS ARE TO BE FUSED OR MECHANICALLY RESTRAINED IN ACCORDANCE WITH F.A.C. 62-555.314. NO LPSS FM'S ARE TO BE INSTALLED WITH LESS THAN 3-FT HORIZONTAL SEPARATION OR 6-IN VERTICAL SEPARATION.
3. AT WM CROSSINGS, STAGGER LPSS FM PIPE JOINTS TO BE AT LEAST 6-FT AWAY HORIZONTALLY FROM WATER MAIN AT CROSSINGS.
4. ALL LPSS FM FITTINGS SHALL BE FUSED OR MECHANICALLY RESTRAINED JOINT. ADDITIONALLY THE FIRST TWO PIPE FULL (20') JOINTS UPSTREAM AND DOWNSTREAM OF EACH FITTING SHALL BE MECHANICALLY RESTRAINED IF NOT OTHERWISE FUSED.
5. COORDINATE ALL UTILITY CROSSINGS IN ADVANCE OF LAYING LPSS FM ALONG EACH STREET. LAY LPSS FM PIPING AT A CONSTANT SLOPE TO AVOID LOCALIZED LOW POINTS.
6. CONTRACTOR SHALL INSTALL BENDS AS NECESSARY TO MAINTAIN PIPE ALIGNMENT AND REQUIRED UTILITY SEPARATIONS. PIPE JOINTS SHALL NOT BE OVERDEFLECTED BEYOND MANUFACTURER'S LISTED ACCEPTABLE INSTALLATION CRITERIA.

**SHEET KEY NOTES**

1. GRINDER PUMP STATIONS AND SERVICE LINES TO BE INSTALLED BY OTHERS. CONTRACTOR IS RESPONSIBLE FOR INSTALLING ALL LPSS FM PIPE, FITTINGS, AND APPURTENANCES SHOWN WITHIN THE RIGHT-OF-WAY UP TO AND INCLUDING A RESIDENTIAL SERVICE CONNECTION AT EACH RESIDENCE.

SEE SHEET C-218

SEE SHEET C-220

NO.	DATE	DR	CHK	REVISION	BY	APVD
		K. WADDELL	S. STATMAN			
			M. STICKLEY			K. WADDELL

25 W CEDAR STREET, SUITE 350  
PENSACOLA, FLORIDA 32502

FOXWOOD ESTATES  
LOW-PRESSURE SEWER SYSTEM  
CITY OF CRESTVIEW  
CRESTVIEW, FL

**JACOBS**

CIVIL

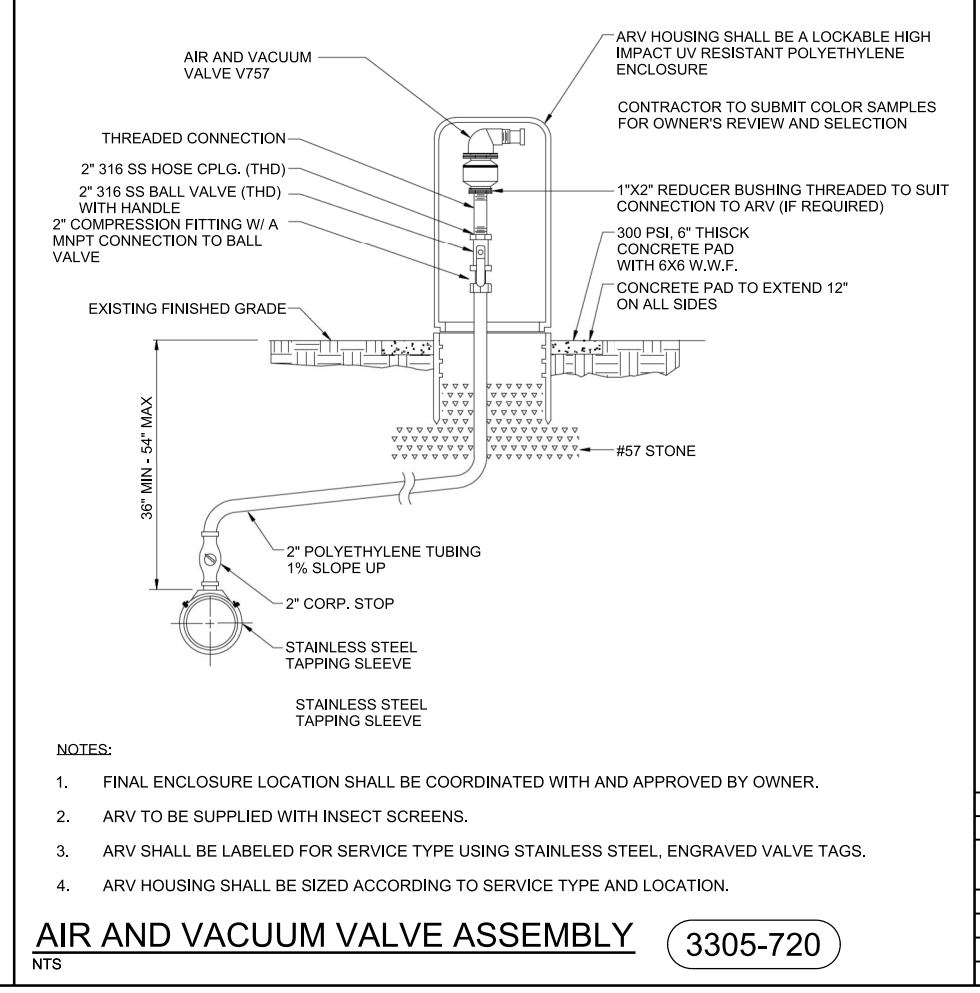
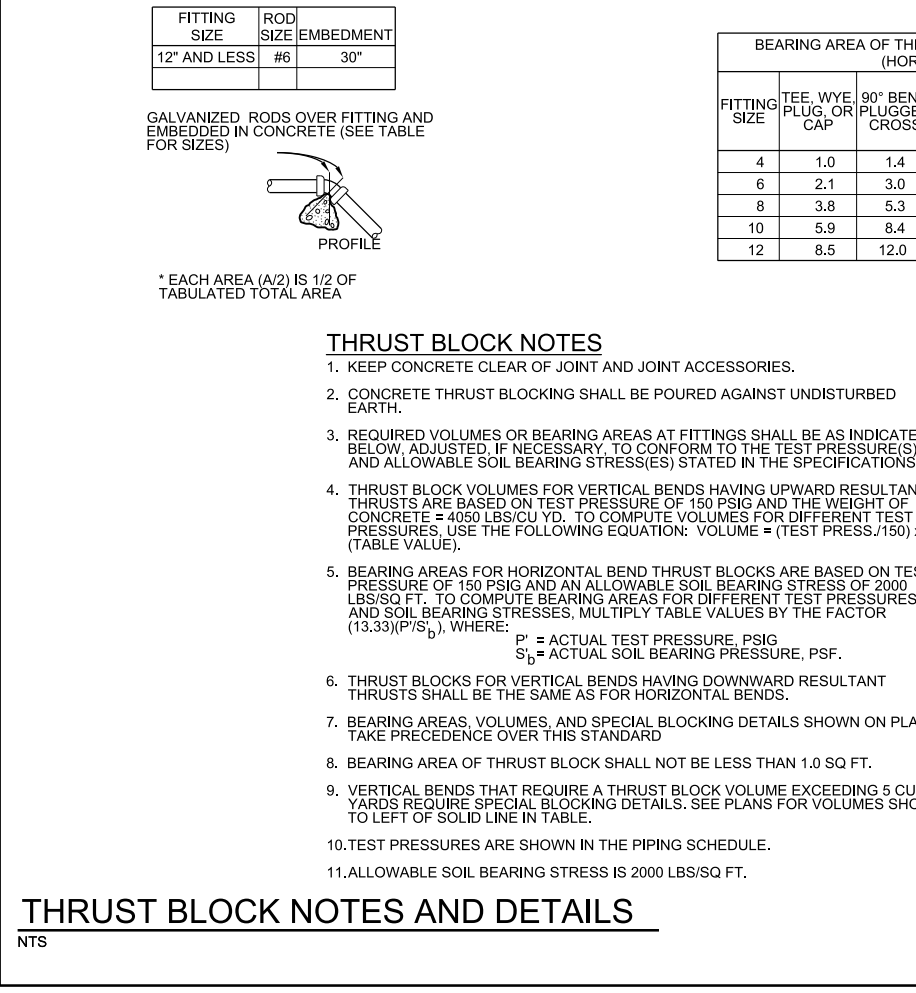
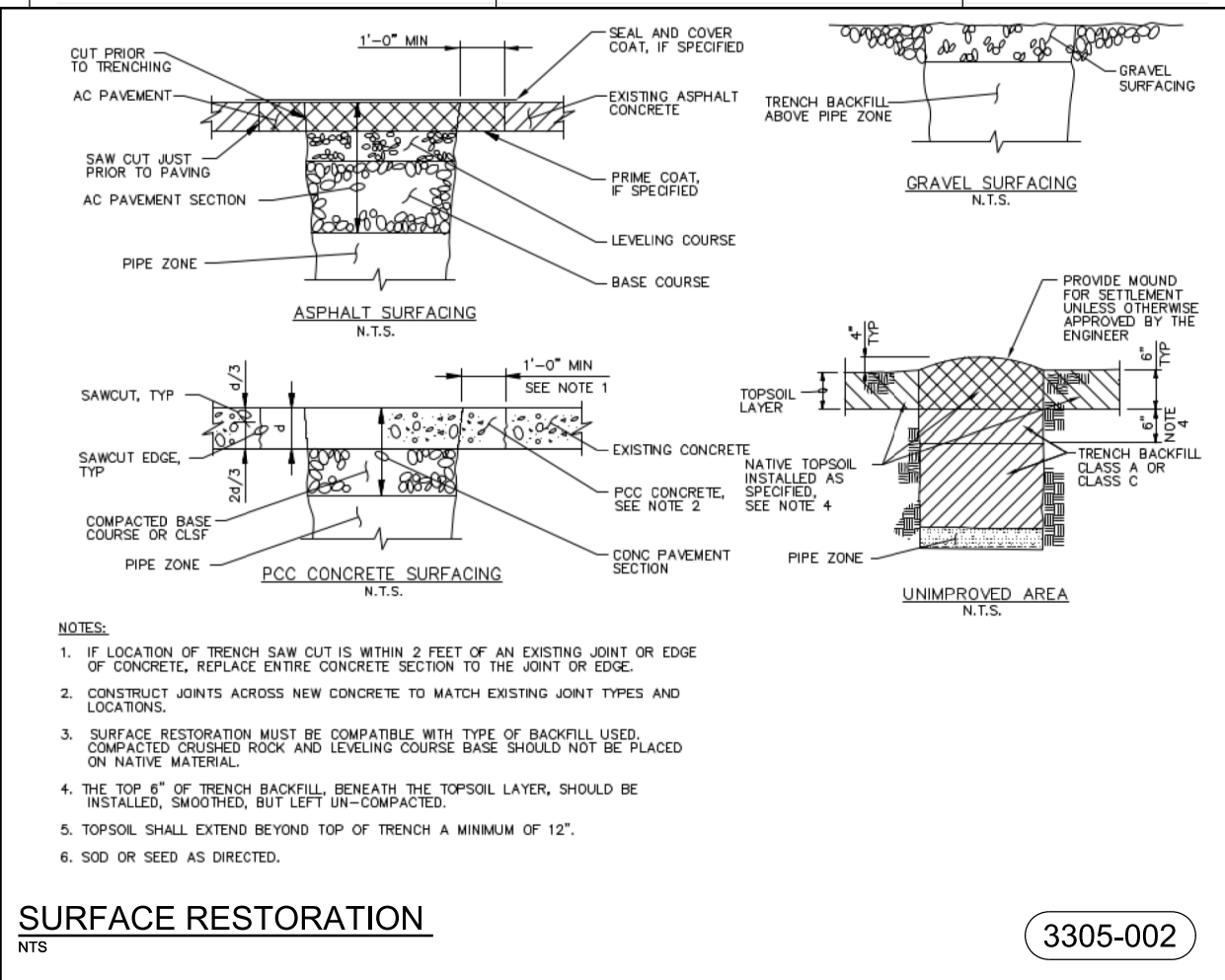
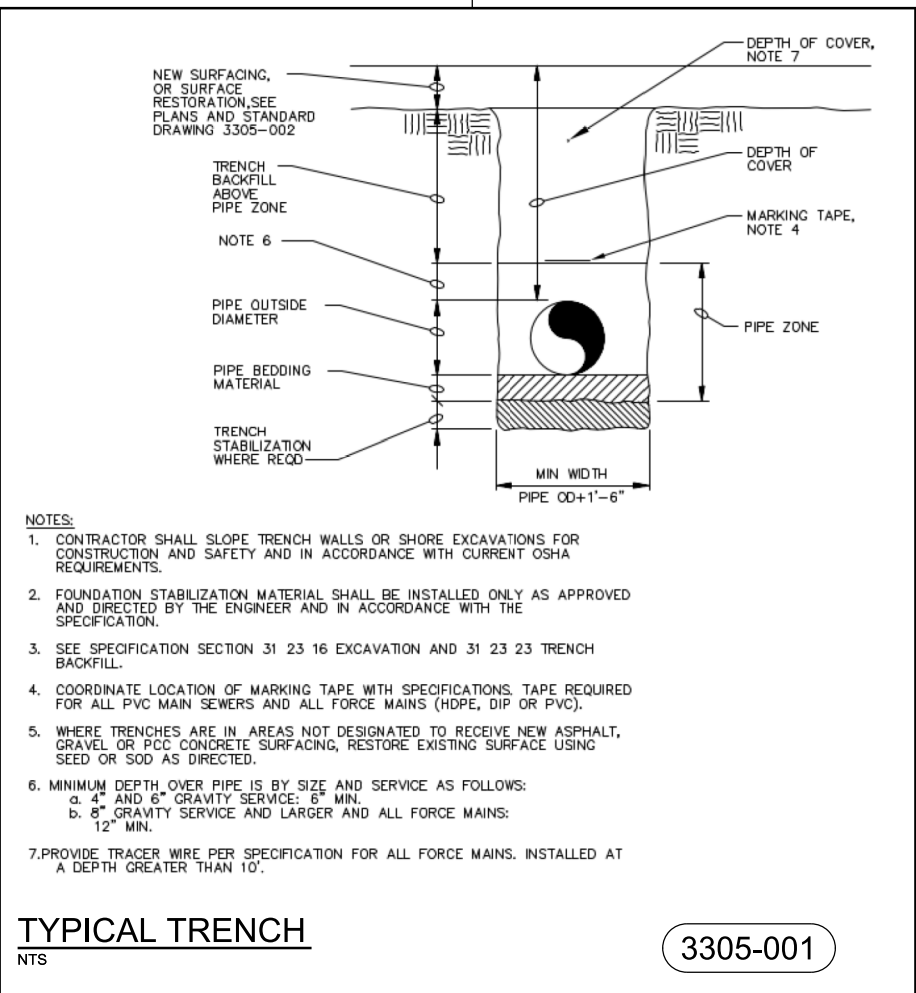
**LOW-PRESSURE SSM PLAN VIEW  
WEDGEWOOD COURT**

VERIFY SCALE	
BAR IS ONE INCH ON ORIGINAL DRAWING.	
DATE	OCTOBER 2023
PROJ	D3679600
DWG	C-219
SHEET	22 of 25

REUSE OF DOCUMENTS: THIS DOCUMENT AND THE IDEAS AND DESIGNS INCORPORATED HEREIN, AS AN INSTRUMENT OF PROFESSIONAL SERVICE, IS THE PROPERTY OF JACOBS AND IS NOT TO BE USED IN WHOLE OR IN PART, FOR ANY OTHER PROJECT WITHOUT THE WRITTEN AUTHORIZATION OF JACOBS.

BID DOCUMENTS





25 W CEDAR STREET, SUITE 350  
PENSACOLA, FLORIDA 32502

FOXWOOD ESTATES  
LOW PRESSURE SEWER SYSTEM  
CITY OF CRESTVIEW  
CRESTVIEW, FL

**JACOBS**  
CIVIL  
STANDARD DETAILS

DATE: OCTOBER 2023  
PROJ: D3679600  
DWG: C-501  
SHEET: 24 of 25

VERIFY SCALE  
BAR IS ONE INCH ON ORIGINAL DRAWING.

NO. DATE DSGN DR REVISION CHK BY APVD

K. WADDELL  
M. STICKLEY  
S. STATMAN  
K. WADDELL

THIS DOCUMENT AND THE IDEAS AND DESIGNS INCORPORATED HEREIN, AS AN INSTRUMENT OF PROFESSIONAL SERVICE, IS THE PROPERTY OF JACOBS AND IS NOT TO BE USED, IN WHOLE OR IN PART, FOR ANY OTHER PROJECT WITHOUT THE WRITTEN AUTHORIZATION OF JACOBS.

REUSE OF DOCUMENTS:

**BID DOCUMENTS**



