



Board of County Commissioners • Escambia County, Florida

Paul R. Nobles/Purchasing Manager
Office of Purchasing

August 24, 2018

To: All Known Prospective Bidders

ADDENDUM NUMBER 3:

Re: PD 17-18.090 Beulah Regional Park Restroom Building Resolicit

All:

We recently sent issued an Invitation to Bid on the above-mentioned specification. This Addendum Number 3 provides for the updates contained in the following pages.

This Addendum Number 3 is furnished to all known prospective bidders. Please sign and return one copy of this Addendum, with original signature, with your bid as an acknowledgement of your having received same. You may photo copy this form for your records.

Sincerely,

A handwritten signature in dark ink, appearing to read "B. Roggenbuck", is written over a light blue horizontal line.

Buzz Roggenbuck
Sr. Purchasing Coordinator

Acknowledgement of Receipt of Addendum 3:

SIGNED: _____

COMPANY: _____

BR

1. A new Bid Form has been included below and replaces the Bid Form contained in the solicitation. The only update to the Bid Form is a line where bidders can provide an additive alternate price for a metal roof. The price to be put in this space is strictly for the price of the metal roof.
2. The following information was provided by the Civil Engineer regarding estimated fees for a 1.5" meter:

Security Deposit = \$724.50

Water & Sewer Impact = \$10,300

3. Below is a revised Power Riser Diagram that directs the Contractor to stub out a 2" conduit to below grade. The power company will install service from the utility pole to the building. The Contractor shall verify all requirements with the power company's engineer

SIGN AND RETURN THIS FORM WITH YOUR BID*

SOLICITATION, OFFER AND BID FORM

ESCAMBIA COUNTY, FLORIDA

Submit Offers to:

Buzz Roggenbuck – 850-595-4878

Invitation to Bid

Senior Purchasing Coordinator

Office of Purchasing, 2nd Floor, Room 11.101

**BEULAH REGIONAL PARK RESTROOM
BUILDING RESOLICIT**

213 Palafox Place, Pensacola, FL 32502

Post Office Box 1591, Pensacola, FL 32591-1591

Phone: 850-595-4987

Solicitation Number PD 17-18.090

Solicitation

MAILING DATE: April 30, 2018

PRE-SOLICITATION CONFERENCE: A Non-Mandatory Pre-Solicitation Conference will be held in the Office of Purchasing Conference Room, 11.407, at 213 Palafox Pl. Pensacola, FL 32502, at 3:00 pm CDT, Sept 4, 2018.

OFFERS WILL BE RECEIVED UNTIL: 3:00 PM CDT, Sept 13, 2018, and may not be withdrawn within 90 days after such date and time.

POSTING OF SOLICITATION TABULATIONS

Solicitation tabulations with recommended awards will be posted for review by interested parties at the Escambia County Office of Purchasing, and will remain posted for a period of two (2) business days. Failure to file a protest in writing within two (2) business days after posting of the solicitation tabulation shall constitute a waiver of any protest relating to this solicitation. All protests must be filed with the Escambia County Office of Purchasing. Protests will be handled according to the Escambia County Purchasing Ordinance.

OFFER (SHALL BE COMPLETED BY OFFEROR)

Federal Employer Identification Number or S.S. Number:

Terms of Payment

Delivery Date will be _____ days after receipt of purchase order

Reason for No Offer

Vendor Name: _____

Address: _____

City, ST. & Zip: _____

Phone: (____) _____

Toll Free: (____) _____

Fax: (____) _____

Bid Bond Attached:

\$ _____

(Name and Title of Person Authorized to Sign Offer)

I certify that this offer is made without prior understanding, agreement, or connection, with any Corporation, firm or person submitting an offer for the same materials, supplies, or equipment, and is in all respects fair and without collusion or fraud. I agree to abide by all conditions of this offer and certify that I am authorized to sign this offer for the Offeror and that the Offeror is in compliance with all requirements of the solicitation, including but not limited to certification requirements. In submitting an offer to Escambia County Florida, the Offeror agrees that if the offer is accepted, the Offeror will convey, sell, assign or transfer to Escambia County Florida all rights title and interest in and to all causes of action it may now or hereafter acquire under the Anti-trust laws of the United States and the State of Florida for price fixing relating to the particular commodities or services purchased or acquired by Escambia County Florida. At the County's discretion, such assignment shall be made and become effective at the time the County tenders final payment to the Offeror.

**Signature of Person Authorized to Sign Offer
(Original Signature Required)**

*** Failure to execute this Form binding the bidder's offer shall result in the bid being rejected as non-responsive.**

Bid Form

Base Bid \$ _____

Additive Alternate Bid for Metal Roof \$ _____

(Should only include the cost of adding a metal roof, not a Bid Total)

**Addendum 3 Bid Form – must be used in place of original Bid Form
or bid will be deemed non-responsive.**



Ampco's stainless steel compartment systems are considered the finest in the industry. Ultimate for installations where appearance and strength are prime considerations. Soft brush satin, stainless steel material has soft, rounded door and stile edges. Ampco's superior design imparts a visual beauty unmatched by any other system. Recommended for high humidity applications. Shipped with protective PVC film which is easily removed after installation.

CONSTRUCTION

All restroom compartments will be fabricated at Ampco Southwest in Sanger, Texas. Our stainless steel sheets meet ASTM- A666 and ASTM A-167, Type 301. All doors, panels and screens are 1" thick fabricated using #301 Stainless Steel with a paper honeycomb core. The core material is sound-deadening resin impregnated honeycomb kraft paper. Our stainless steel toilet partitions are fabricated of one piece face sheets bonded to the core material. All pilasters are 1-1/4" thick using #304 Stainless Steel with paper honeycomb core.

STANDARD HARDWARE

Zamac hardware

All exposed hardware other than pilaster shoes are polished chrome plated heavy cast non-ferrous metal. Compartments are furnished with necessary mounting brackets and combination coat hook bumper. Pilaster shoes are made with stainless steel type 301 with #4 Satin finish.

Hinges:

Our hinges supply gravity-acting cam allowing all doors to be set at various positions.

Latch and Keeper:

Cast chrome plated non-ferrous slide latch and combination stop with emergency release.

Coat Hook:

Cast chrome plated non-ferrous coat hook for outswing and or combination coat hook and bumper for inswing.

Door Pull:

Cast chrome plated non-ferrous metal

Headrail:

When required, headrail is made of anti-grip aluminum extrusion.

OPTIONAL FEATURES:

- Heavy duty cast chrome plated brass hardware
- Cast stainless steel hardware
- Continuous stainless steel or aluminum wall bracket
- Continuous stainless steel hinge
- Continuous aluminum hinge
- Euroline Hardware

FINISHES AVAILABLE

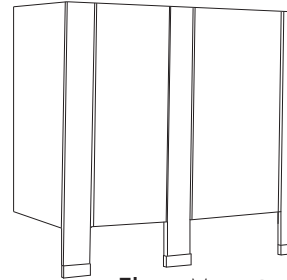
Brushed # 4 Finish

5WL

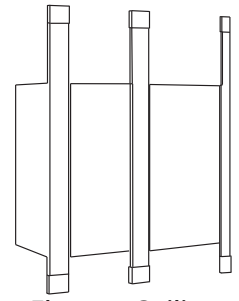
Random Swirl

Leather Grain

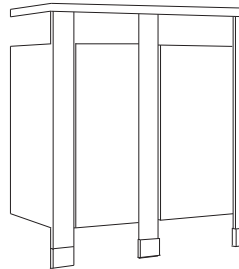
CONSTRUCTION STYLES



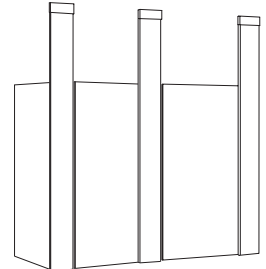
Floor Mounted



Floor to Ceiling
(Ceiling height required)



Overhead Braced



Ceiling Hung
(Ceiling height required)

LEED CERTIFICATION PROGRAM

Construction Waste Management MR 2.0		
1 point	Redirect recyclable recovered resources back to the manufacturing process and reusable material to appropriate site.	
Recycled Content MR 4.0		
1-2 points	Pre-Consumer	3%
	Post-Consumer	67%
Local and Regional Material MR 5.0		
1-2 points	Toilet Partitions manufactured in: Sanger, TX 76266 Honeycomb manufactured in: Gurnee, IL Galvanized Steel manufactured in: Garland, TX Zamac Hardware: Sanger, TX	
Low Emitting Materials IEQ 4.4		
1 point	Honeycomb - Yes	
Regional Priority Credit 1.0		
1-4 Credits	Depending on the job site zip code.	

Our Stainless Steel Toilet Partitions comply with CID A-A-60003
AMPCO is not responsible for any typographical errors.

*Stainless Steel toilet partitions are assembled with three materials: 85% stainless steel, 5% honeycomb and 10% Zamac hardware.
For samples please contact the marketing department.

PART 1 - GENERAL

1.1 RELATED DOCUMENTS

- A. Drawings and General Provisions of Contract, including General and Supplementary Conditions and Division 1 Specification Sections, apply to this Section.

1.2 SUMMARY

- A. This section includes stock and manufactured toilet compartments.
B. Types of toilet compartments include:
1. Stainless Steel
C. Construction styles of toilet compartments include:
1. Ceiling Hung
2. Floor Mounted
3. Floor to Ceiling Supported
4. Overhead Braced
D. Construction styles of modesty panels and sight screens include:
1. Leg Screen
2. Floor Mounted
3. Floor to Ceiling Supported
4. Wall Hung

- E. Supports for attaching compartments, modesty panels and sight screens to overhead structural systems are specified in a Division 5 Section.

1.3 SUBMITTALS

- A. General: Submit the following in accordance with Conditions of Contract and Division 1 Specification sections.
B. Product data for materials, fabrication, and installation including catalog cuts of anchors, hardware, fastenings, and accessories.
C. Shop drawings for fabrication and installation of compartment assemblies that are not fully described by architectural drawings. Provide template layouts and installation instructions for anchorage devices built into other work.
D. Samples of full color range for each required unit type. Submit Ampco's standard color selector.

1.4 QUALITY ASSURANCE

- A. Field Measurements: Take field measurements prior to component fabrication to ensure proper fitting of work.
B. Coordination: Furnish inserts and anchorages that must be built into other work for installation of toilet compartments and related items.

2.2 MATERIALS

- A. General: Provide material that have been selected for surface flatness and smoothness. Exposed surfaces that exhibit pitting, seam marks, roller marks, stains, discoloration, telegraphing of core, or other imperfections on finished units are not acceptable.
B. Select from the following:
1. Metal, Stainless Steel:
a. Stainless Steel sheets for system shall meet ASTM A-666 and ASTM A-167, Type 301.
Sheets shall be finished on exposed faces with Number 4 Satin (brushed) finish, in the following minimum thickness:
1. Stiles (Overhead Braced, Floor to Ceiling): 22 gage
2. Stiles (Floor mounted, ceiling hung): 18 gage
3. Doors, Panels and Screens: 22 gage
b. Core material for Metal Compartments shall be Ampco's standard sound deadening resin impregnated honeycomb kraft paper.
Provide thickness of 1" for doors, panels and screens and 1-1/4" for stiles.
C. Stile Shoes and Caps: Shall be 20 gage ASTM A-666 and ASTM A-167, Type 301 stainless steel, not less than 3" high, Number 4 Satin (brushed) finish.
D. Brackets: Ampco's standard design for attaching panels to walls, stiles to walls, and panels to stiles of the following material:
1. Stainless Steel shall have cast chrome plated non-ferrous hardware.
E. Overhead Bracing: Continuous extruded aluminum, anti-grip profile, with clear satin anodized finish. Headrail returns as shown on shop drawings.
F. Anchorages and Fasteners: Standard chromium-plated exposed fasteners are finished to match hardware with theft-resistant type heads (one-way). All concealed steel fasteners shall have a zinc-plated, rust-resistant, protective coating. All fasteners shall be pre-packed, marked and labeled for ease of identification.

2.3 FABRICATION

- A. General: Furnish standard doors, panels, screens and stiles fabricated for compartment system. Furnish units with cutouts and drilled holes to receive compartment hardware as indicated.
B. Door Dimensions: Unless otherwise indicated, furnish 24" wide in-swing doors for ordinary toilet compartments and minimum 32" wide (clear opening) out-swing doors for compartments that meet the requirements of the Americans with Disabilities Act (ADA).
C. Restroom Compartments, Modesty Panels and Sight Screens:
1. Metal, Stainless Steel: One-piece face sheets shall be bonded to core material. Edges shall have a continuous rolled- formed inter-locking strip. Corners shall be welded and ground smooth. Mechanical corner fastenings will not be acceptable.

- D. Construction Types of Restroom Compartments, Modesty Panels and Sight Screens:

1. Overhead Braced: Furnish galvanized steel supports and leveling bolts at stiles to suit floor conditions as recommended by Ampco. Make provisions for setting and securing overhead bracing at the top of each stile. Provide shoe at each stile to conceal supports and leveling mechanism.
2. Floor Mounted: Furnish galvanized steel anchorage devices complete with threaded rod, lock washers, and leveling adjustment nuts at stiles to permit structural connection at floor. Provide shoe at each stile.
3. Ceiling Hung: Furnish galvanized steel anchorage devices complete with threaded rods, lock washers, and leveling adjustment nuts at stile connection for structural support above finished ceiling. Furnish devices that are designed to support stiles from structure without transmitting load to finished ceiling. Provide shoe at each stile to conceal anchorages.
4. Floor to Ceiling: Furnish galvanized steel supports and/or threaded rod, lock washers, and leveling adjustment nuts at stiles as required. Provide shoes at each stile to conceal anchorages.

- E. Hardware: Furnish hardware to comply with ANSI A117.1 and Title III of the Americans with Disabilities Act (ADA) as follows:

1. Metal, Stainless Steel:

- a. Hinges: Supply gravity-acting cam allowing all doors to be set at various positions.
b. Latch and Keeper: Cast chrome plated non-ferrous slide latch and combination stop with emergency release.
c. Coat Hook: Cast chrome plated non-ferrous coat hook (O/S) and/or combination coat hook and bumper (I/S).
d. Door Pull: Cast chrome plated non-ferrous metal.

- 2.4 FINISH. Select color from Ampco's most recent selection chart. Finalize selection from actual material sample provided by manufacturer.

PART 3 - EXECUTION

3.1 INSTALLATION

- A. General: Comply with manufacturer's recommended procedures and installation sequence.
Install compartment units rigid, straight, plumb and level. Provide clearance of not more than 1/2" between stiles and panels and not more than 1" between panels and walls. Secure panels to walls with not less than two brackets attached near top and bottom of panel. Locate wall brackets so that holes for wall anchorages occur in masonry or tile joints. Secure panels to stiles with not less than two brackets located to align with brackets at wall. Secure panels in position with manufacturer's recommended anchoring devices.
B. Overhead Braced Compartments: Secure stile to floor and level, plumb, and tighten installation with devices furnished. Secure overhead brace to each stile with fasteners supplied. Hang doors and adjust so that tops of doors are parallel with overhead brace when doors are in closed position.
C. Floor Mounted Compartments: Set stile units with anchorages having not less than 2" penetration into structural floor, unless otherwise recommended by Ampco. Level, plumb, and tighten installation with devices furnished. Hang doors and adjust so that tops of doors are level with tops of stiles when doors are in closed position.
D. Ceiling Hung Compartments: Secure stiles to supporting structure and level, plumb and tighten installation with devices furnished. Hang doors and adjust so door bottoms are level with bottoms of stiles when doors are in closed position.
E. Floor to Ceiling Compartments: Secure divider panels to built-in anchorage devices using concealed fasteners. Level, plumb and tighten installation with devices furnished. Hang doors and adjust so that bottoms of doors are 12" off floor when doors are in closed position.
F. Screens: Attach with anchoring devices as recommended by manufacturer to suit supporting structure. Set unit to provide support and to resist lateral impact.

3.2 ADJUST AND CLEAN

- A. Hardware Adjustment: Adjust and lubricate hardware for proper operation. Set hinges on in-swing doors to hold open approximately 30 degrees from closed position when unlatched. Set hinges on out-swing doors (and entrance swing doors) to return to fully closed position.
B. Clean and Protect: Clean exposed surfaces of compartment systems using materials and methods recommended by manufacturer, and provide protection as necessary to prevent damage during remainder of construction period.

FLORIDA

11400 NW 36th Avenue, Miami, Florida 33167
T. 305.821.5700 F. 866.216.5300 E. florida@ampco.com

TEXAS

201 Railroad Avenue, Sanger, Texas 76266
T. 940.458.7401 F. 866.372.5300 E. texas@ampco.com

WASHINGTON

4520 B Street NW, Suite B, Auburn, Washington 98001
T. 253.852.5900 F. 866.323.5300 E. washington@ampco.com

ELECTRICAL LEGEND

CEILING OUTLETS

⊗ EXIT LIGHT

Ⓢ JUNCTION BOX

○ RECESSED/SURFACE MOUNT LIGHT

EF EXHAUST FAN

PANELS AND POWER

120/240 VOLT PANELBOARD

□ NON-FUSIBLE DISCONNECT SWITCH: XX/YY/ZZ WHERE X INDICATES AMPERAGE, Y INDICATES # OF POLES, AND Z INDICATES NEMA RATING

WALL SWITCHES (UNLESS OTHERWISE NOTED, MOUNT 48" A.F.F.)

S A.C. TYPE, SINGLE POLE, 20 AMP, 120/277 VOLT

SM MOTOR-RATED TOGGLE SWITCH

SR WALL MOUNTED OCCUPANCY SENSOR (PASSIVE INFRARED) EQUAL TO WATTSTOPPER PW-100; SET DELAY OFF TIME FOR 10 MINUTES (120/277V)

SRD WALL MOUNTED OCCUPANCY SENSOR EQUAL TO WATTSTOPPER DW-100; DUAL TECHNOLOGY; MOUNT 48" AFF TO C/L; SET DELAY OFF TIME FOR 10 MINUTES (120/277V)

AUTOMATIC LIGHTING CONTROL SYSTEM

270° CEILING WALL/CEILING OCCUPANCY SENSOR EQUAL TO WATTSTOPPER 'EW-200-120-(FINISH)...LINE VOLTAGE; PASSIVE INFRARED TECHNOLOG, 1000 WATT BALLAST; WET LOCATION LISTED. AVAILABLE FINISHES ARE 'ARCTIC GREY' OR 'ARCTIC WHITE'

MISCELLANEOUS

A.F.F. ABOVE FINISH FLOOR

B.F.C. BELOW FINISHED CEILING

WP WEATHERPROOF

U.N.O. UNLESS NOTED OTHERWISE

WALL OUTLETS

⊕ DUPLEX RECEPTACLE - 20 AMP, 125 VOLT, 2 POLE, 3 WIRE GROUNDED TYPE, NEMA 5-20R. MOUNT 18" A.F.F. UNLESS NOTED OTHERWISE

G⊕ DUPLEX RECEPTACLE - 20 AMP, 125 VOLT, GFI, 2 POLE, 3 WIRE GROUNDED TYPE, NEMA 5-20R. MOUNT 18" A.F.F. UNLESS NOTED OTHERWISE

WP⊕ DUPLEX WEATHERTIGHT RECEPTACLE - 20 AMP, 125 VOLT, GFI, 2 POLE, 3 WIRE GROUNDED TYPE, NEMA 5-20R. MOUNT 18" A.F.F. UNLESS NOTED OTHERWISE; PROVIDE WEATHERPROOF BOX FOR RECEPTACLE

⊕ DUPLEX RECEPTACLE - 20 AMP, 125 VOLT, 2 POLE, 3 WIRE GROUNDED TYPE, NEMA 5-20R. MOUNT ADJACENT TO TELEVISION OUTLET AT SAME HEIGHT.

⊕,T DUPLEX RECEPTACLE - 20 AMP, 125 VOLT, GFI, 2 POLE, 3 WIRE GROUNDED TYPE, NEMA 5-20R, TAMPER-RESISTANT, MOUNT 6" ABOVE COUNTER

⊕ DUPLEX RECEPTACLE - 20 AMP, 125 VOLT, GFI, 2 POLE, 3 WIRE GROUNDED TYPE, NEMA GF-5-20R. MOUNT 26" AFF TO C/L FOR DRINKING FOUNTAIN

Ⓢ FLUSH-MOUNTED JUNCTION BOX WITH BLANK SCREW COVER AND FLEXIBLE CONDUIT CONNECTION

Ⓢ SURFACE-MOUNTED JUNCTION BOX WITH BLANK SCREW COVER (UNLESS DEVICE SHOWN TO BE INSTALLED); SIZE OF BOX TO BE DETERMINED BY DEVICE BEING INSTALLED

Ⓢ WALL MOUNTED HIGH INTENSITY DISCHARGE FIXTURE

Ⓢ WALL-MOUNTED EMERGENCY EGRESS FIXTURE; UNLESS NOTED OTHERWISE, MOUNT @ 7'6" A.F.F. AND FURNISH WITH EMERGENCY BATTERY BACKUP.

BRANCH CIRCUITING

--- RUN CONCEALED UNDER FLOOR OR IN GRADE

--- RUN CONCEALED IN CEILING OR WALLS

LA-1 HOMERUN TO PANEL. ANY CIRCUIT WITHOUT FURTHER IDENTIFICATION INDICATES 2#12, 1#12 GROUND - 1/2" C; 3 #12, 1 #12 GROUND - 1/2" C; 4#12, 1 #12 GROUND - 1/2" C; ETC AS PER NEC. LETTERS AND NUMERALS INDICATE PANEL AND CIRCUIT

~ LIQUID-TIGHT FLEXIBLE CONDUIT CONNECTION

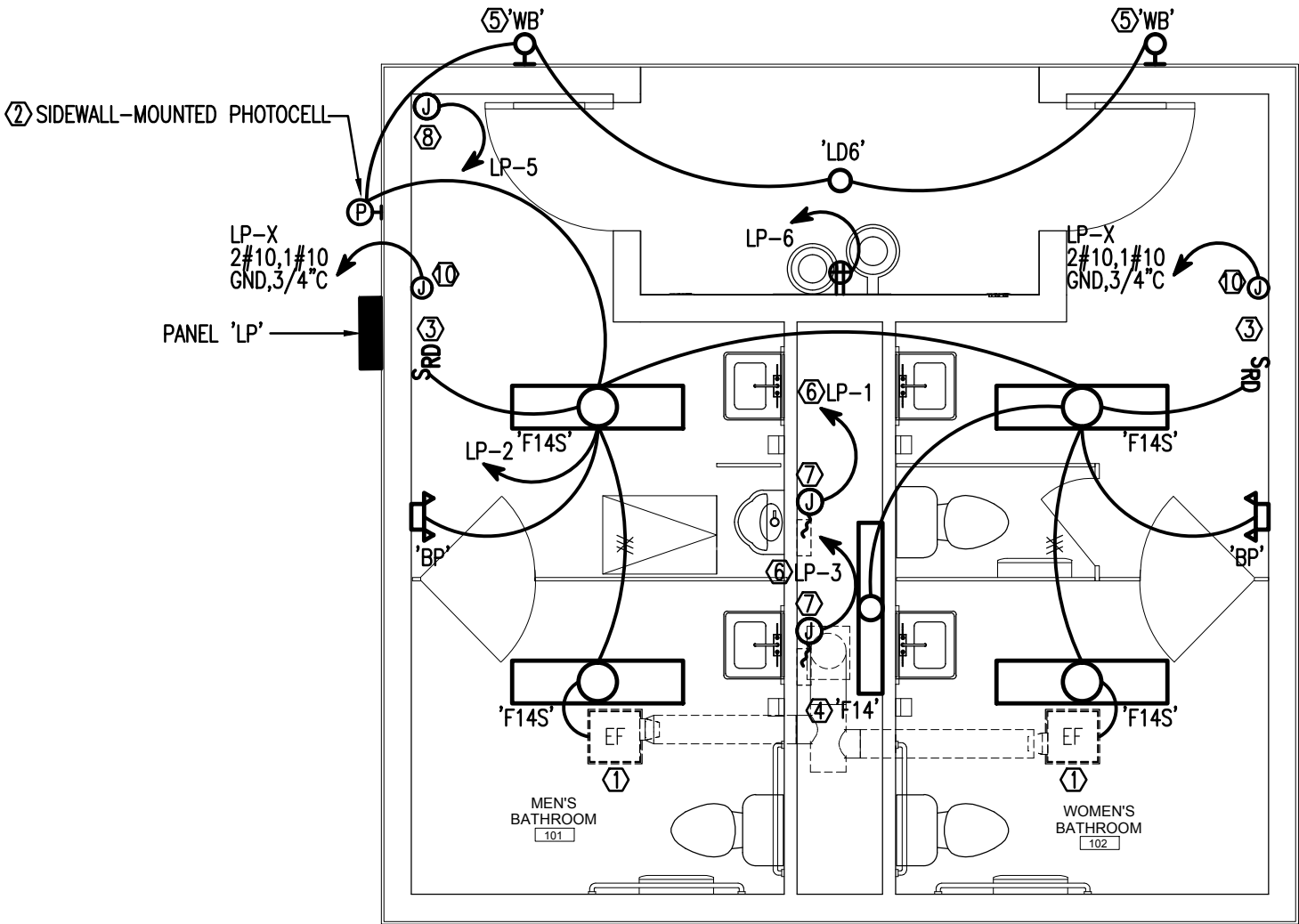
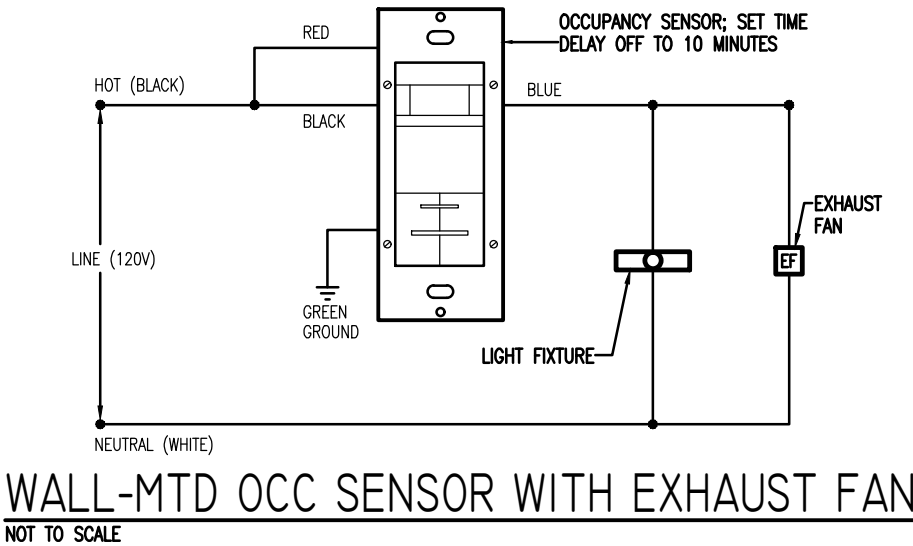
--- SURFACE MOUNTED CONDUIT; RUN PARALLEL OR PERPENDICULAR TO BUILDING LINES

LIGHTING FIXTURE SCHEDULE				
MARK	MANUFACTURER AND CATALOG No.	LAMPS No. TYPE	MOUNTING	REMARKS
BP	BEGHELLI EL-SE-205LED-120/277V-AT(AUTO TEST)-BLACK HOUSING	LED	WALL-MOUNT @20" A.F.F.	EMERGENCY BATTERY PACK, 120V, WET LOC LISTED, BLACK HOUSING, VANDAL-RESISTANT, 3-YR WARRANTY
LD8	H.E. WILLIAMS L60-L40C-835-CS-W-WET/CC-CAL-DRY-120	30W 3500K LED	CEILING RECESSED	6" LED DOWNLIGHT, WET LOC LISTED, 120V, CLEAR SEMI-SPEC REFL, CLEAR ACRYLIC LENS, WIDE DIST, 3500K, 120V
F14	H.E. WILLIAMS 76-4-L32-835-DRY-UNV	28W 3500K LED	SURFACE-MOUNT	48" SURFACE-MOUNTED LED STANDARD STRIP, 120V, 3500K, STANDARD WHITE FINISH,
F14S	H.E. WILLIAMS 38-4-L52/835-DRY-120V	51W 3500K LED	SURFACE-MOUNT	10" X 48" SURFACE-MOUNTED LED FIXT, FROSTED REBBER ACRYLIC LENS 120V, 3500K, FINISH BY ARCHITECT
WB	H.E. WILLIAMS WP-11-L60-740-13 (FINISH)-SDOL-DIM-UNV	30W 3500K LED	SURFACE-MOUNT	16-3/4"W X 5-11/16" H X 7-5/8"D WALL PACK, TYPE III DISTRIBUTION, 120V, FINISH TO BE VERIFIED BY ARCHITECT PRIOR TO PLACING ORDER
WB	WILLIAMS/WP11-L30/740-13 (FINISH)-SDOL-NONDIM-120	30W 4000K LED	WALL MOUNT	ARCHITECTURAL WALLPACK, 120V, FINISH BY GC, WET LOC

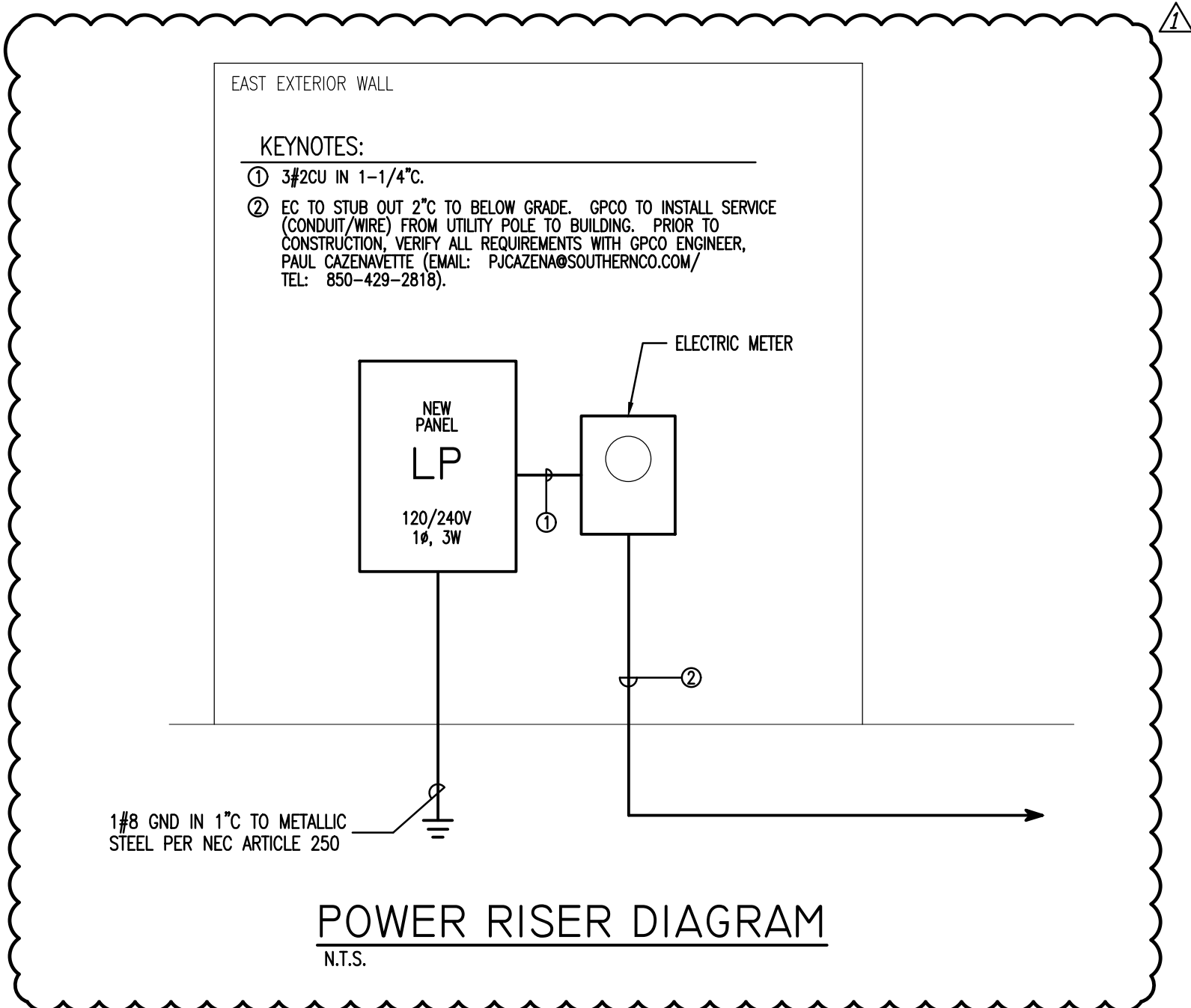
120/240 VOLT 1ø 3W 100 AMP MAIN BREAKER		CIRCUIT BREAKER PANEL SCHEDULE PANEL 'LP'						SURFACE-MOUNTED NEMA 3R LOCKABLE ENCLOSURE	
CKT	LOAD DESCRIPTION	BREAKER		LOAD KVA	BREAKER		LOAD DESCRIPTION	CKT	
		POLE	AMP		AMP	POLE			
1	IWH (WTR HTR)	1	30Ⓢ	3.0	0.7	20	1	LTS-INTERIOR/EXTERIOR	2
3	IWH (WTR HTR)	1	30Ⓢ	3.0	0.72	20	1	REC-INTERIOR/EXTERIOR	4
5	PIPING HEAT TRACE	1	20	0.3	0.48	20Ⓢ	1	FWC	6
7	HAND DRYER (FUTURE)	1	25Ⓢ	2.4	2.88	25ⓈⓈ	2	GRINDER PUMP (2HP)	8
9	HAND DRYER (FUTURE)	1	25Ⓢ	2.4					10
11	SPARE	1	25Ⓢ	--	--	20	1	SPARE	12
13	SPARE	1	25Ⓢ	--					14
15	SPACE	1	--						16
17									18
19					--		1	SPACE	20
21									22
23									24
<div>① HACR RATED BREAKER; VERIFY SIZE REQUIRED FOR EQUIPMENT FURNISHED</div> <div>② FURNISH BREAKER WITH HANDLE 'LOCK-OFF' CAPABILITY</div>									
TOTAL CONNECTED LOAD: 15.88 KVA MINIMUM INTERRUPTING CAPACITY: 10,000 AMPS SYMMETRICAL									

ELECTRICAL GENERAL NOTES

- CONTRACTOR SHALL COORDINATE ALL WORK WITH OTHER TRADES PRIOR TO INSTALLATION. REFER TO MECHANICAL AND PLUMBING DRAWINGS FOR EXACT SIZE AND LOCATION OF EQUIPMENT WHICH IS FURNISHED BY OTHERS AND CONNECTED BY ELECTRICAL.
- RECEPTACLES, SWITCHES AND COVERPLATES COLOR SHALL BE SELECTED BY THE ARCH/OWNER FROM STANDARD COLORS.
- LOCATION OF LIGHTING FIXTURES, DISCONNECT SWITCHES, ETC. FOR MECHANICAL EQUIPMENT/ROOM SHALL BE COORDINATED WITH FINAL MECHANICAL EQUIPMENT LOCATION TO PROVIDE NATIONAL ELECTRIC CODE REQUIRED ACCESS SPACE.
- FINAL CONNECTION TO ALL MOTORS SHALL BE WITH FLEXIBLE CONDUIT CONNECTION.
- ALL EXIT AND EMERGENCY FIXTURES SHALL BE CONNECTED TO LIGHT CIRCUIT AHEAD OF LOCAL SWITCH.
- ALL PANELBOARDS, BACKBOARDS, TERMINAL CABINETS, ETC SHALL HAVE CUSTOM ENGRAVED MICARTA NAMEPLATE AFFIXED IDENTIFYING SYSTEM.
- GENERAL CONTRACTOR SHALL FIELD-VERIFY ALL EXISTING CONDITIONS PRIOR TO BEGINNING ANY WORK, AND SHALL IMMEDIATELY NOTIFY THE ARCHITECT OF ANY DISCREPANCIES. FAILURE TO DO SO INDICATES THAT THE CONTRACTOR ACCEPTS THE CONDITIONS AS THEY EXIST, AND SHALL PERFORM THE WORK REQUIRED AS SHOWN AND SPECIFIED.
- THE ELECTRICAL CONTRACTOR SHALL OBTAIN AND REVIEW THE MECHANICAL AND SPECIAL EQUIPMENT SUBMITTALS PRIOR TO SUBMITTING THE ELECTRICAL SUBMITTALS. ANY ELECTRICAL EQUIPMENT, CONDUIT, AND WIRE SIZE CHANGES RESULTING FROM THIS REVIEW SHALL ALSO BE SUBMITTED FOR APPROVAL.
- COMPLY WITH ALL LOCAL CODE, LAWS, AND ORDINANCES APPLICABLE TO ELECTRICAL WORK, THE STATE BUILDING CODE AND THE NATIONAL ELECTRIC CODE. OBTAIN ALL PERMITS REQUIRED BY LOCAL ORDINANCES.
- EQUIPMENT GROUNDING CONDUCTOR SHALL BE PULLED IN ALL BRANCH CIRCUIT WIRING. CONDUIT GROUND SHALL NOT BE ACCEPTABLE.
- FURNISH ALL EQUIPMENT AND LABOR, PERFORM ALL LABOR WITH SUPERVISION, BEAR ALL EXPENSES, AS NECESSARY FOR THE SATISFACTORY COMPLETION OF ALL WORK READY FOR OPERATION.
- THE ELECTRICAL WORK SHALL BE INSTALLED IN A NEAT AND WORKMANLIKE MANNER. ALL NOT SO INSTALLED SHALL BE REMOVED AND REPLACED AT NO COST TO THE OWNER.
- ALL CONDUCTORS LESS THAN 60A. SHALL BE COPPER #12 & #10 SOLID, #8 AND LARGER STRANDED, #6 AND SMALLER TO BE TYPE TW, 600 VOLT INSULATION. ALUM. CONDUCTORS MAY BE USED FOR 60A AND LARGER ONLY WHERE USED WITH COMPRESSION TERMINATIONS. TYPE NM CABLE MAY NOT BE USED ON THIS PROJECT.
- PROVIDE GROUNDING PER NATIONAL ELECTRIC CODE.
- THE CONTRACTOR SHALL LEAVE THE ENTIRE ELECTRICAL SYSTEM INSTALLED IN PROPER WORKING ORDER, AND SHALL REPLACE WITHOUT ADDITIONAL COST, ALL WORK OR MATERIAL WHICH MAY DEVELOP DEFECTS, (ORDINARY WEAR AND TEAR OR DAMAGE RESULTING FROM IMPROPER HANDLING EXCEPTED) WITHIN A PERIOD OF ONE(1) YEAR FROM THE DATE OF FINAL ACCEPTANCE BY THE OWNER.



- KEYNOTES:
- FANS TO BE FURNISHED WITH INTEGRAL MOTION SENSORS.
 - SIDEWALL-MOUNTED PHOTOCELL TO BE MOUNTED/SHIELDED SO THAT ADJACENT EXTERIOR SITE LIGHTING DOES NOT PROHIBIT PROPER OPERATION.
 - AUTOMATIC OCCUPANCY SENSOR SWITCH LOCATED FOR BETTER COVERAGE OF RESTROOM.
 - FIXTURE TO BE MOUNTED AT A MINIMUM OF 6'8" A.F.F. AND OPERATED VIA PULL-CHAIN.
 - MOUNT AT MINIMUM OF 6'8" A.F.F. TO BOTTOM OF FIXTURE.
 - INSTALL 2#8,1#10GND IN 3/4"C.
 - IN LIEU OF DISCONNECT, BREAKER WITH HANDLE 'LOCK-OFF' CAPABILITY HAS BEEN SHOWN IN PANEL SCHEDULE. PRIOR TO CONSTRUCTION, VERIFY WITH LOCAL AHJ THAT THIS OPTION IS ACCEPTABLE. OTHERWISE, INSTALL 30/1/1 DISCONNECT IN PLACE OF J-BOX.
 - PROVIDE CONNECTION TO PIPING HEAT TRACING. VERIFY EXACT LOCATION AND REQUIREMENTS WITH PLUMBING CONTRACTOR PRIOR TO ROUGH-IN.
 - FIELD-VERIFY EXACT LOCATION OF GRINDER PUMP AND PUMP MOTOR SIZE PRIOR TO INSTALLATION. ADJUST ELECTRICAL AS REQUIRED.
 - ELECTRICAL CONTRACTOR TO INSTALL FLUSH-MOUNTED JUNCTION BOX FOR HAND DRYER; PRIOR TO ROUGH-IN, FIELD-VERIFY EXACT LOCATION/HEIGHT WITH GC.



ANTHONY L. DAVIS, P.E.

3035 WHITLEY LN., PACE, FL. 32571
PA.CE, FL. 32571
Email: anthonyldavis@att.net
PH: (850) 995-2548

FL PE #57419/NL PE #24573/GA PE #35421
MS PE #19437/GA PE #35421/VA PE #02056233
NC PE #040692/TN PE #116862
TX PE #117971/PA PE #084120

dalrymple | sallis
architecture

503 E. Government St.
Pensacola, FL 32502
v: 850-470-6399
f: 850-470-6397
www.dolsol.com
AR 0016385

THIS DOCUMENT SHOWS ORIGINAL AND UNPUBLISHED WORK OF THE ARCHITECT AND MAY NOT BE DUPLICATED IN ANY PART WITHOUT WRITTEN CONSENT OF THE FIRM'S PRINCIPALS

CERTIFICATION

PERMIT SET

Beulah Regional Park Restroom

7820 Mobile Hwy.
Pensacola, FL

DRAWN BY: ALD
CHECKED BY: ALD

ISSUE DATE:
12/19/2017

REVISIONS
No. 1 Des. RF#1 Date 06/01/18

SHEET TITLE:
ELECTRICAL PLAN, SCHEDULES & DETAILS

SHEET NO:
E101

PROJECT NO:
17016