

ADDENDUM NO. 1

Project: Siegrist Elementary Playground Improvements
Date: 04/05/2021
Project No: KVE Project Number: C20_0482

incite Design Studio, LLC
110 West 18th Street
Kansas City, MO 64108
p (816) 979.3500

Kaw Valley Engineering
14700 West 114th Terrace
Lenexa, KS 66215
p (913) 894.5150

Platte County R-3 School District
998 Platte Falls Road
Platte City, MO 64079
p (816) 858.5420

NOTICE TO BIDDERS: Amend the Project Manual and Drawings to the above referenced project as follows:

GENERAL

ITEM NO. 1 - PREBID CONFERENCE MINUTES AND ANSWERS TO QUESTIONS.

The meeting began at approximately 1:00pm on Thursday, April 1, 2021.

Dr. Jay Harris, Executive Director of Operations for Platte County R-3 School District and Jaci Foxworthy, with incite Design Studio, presented information regarding the playground turf project at Siegrist Elementary. David Wood, Project Manager for Kaw Valley Engineering, attended the meeting virtually.

The following questions and comments were brought up during the presentation:

1. Sign-up sheet is attached to this addendum.
2. The scope of the work is to install artificial turf as detailed in the construction documents.
3. No permits are associated with this project.
4. Site walk-throughs can occur at any time. If attending immediately following the pre-bid, bidders do not need to check-in with the school. Bidders shall check-in with the school office before visiting the site at any other time. Contact Jay Harris at 816-365-5552 to schedule the visit.
5. There is a substantial completion for the installation of the west playground equipment is July 9th, and for the east playground equipment is July 22nd. Turf installation at each playground can commence after the playground equipment is installed. Substantial completion for the artificial turf installation is July 30th.
6. A preconstruction meeting with the turf installer, the site improvements contractor, and the playground equipment installer is scheduled for May 6, 2021 at 2pm at the District Education Center
7. There is no Bid Bond required for this project.
8. The last day to submit questions on this project is 3:00pm on Monday, April 5. The last addendum will be issued on Monday, April 5.
9. Bid opening will be at 2:00pm on Wednesday, April 7.

ITEM NO. 2 - ANSWERS TO ADDITIONAL QUESTIONS.

1. There are no liquidated damages associated with this project.
2. This project is contracted under the requirements of Missouri Prevailing Wage Law, Building Construction Rates for Platte County. Wage Order information is included in the RFP.
3. This project shall be considered Tax Exempt. Federal, State, and local taxes shall not be included with the Bid. Subsequent to the award of the construction contract, the School District will provide the Project Exemption Certificate. The sales tax exemption certificate will permit the Contractor to purchase materials or incorporation into this project without paying sales tax, provided that the Contractor furnishes the certificate number to the material supplier.
4. Images of the playgrounds have been included with this addendum to illustrate selected equipment. The information shall be used to determine where slide landings and high-use areas are located.
5. Critical fall heights have been analyzed by the playground equipment provider. The maximum fall height does exceed eight feet. Attached to this addendum is a drawing of the "Star Seeker", to be in the east playground, which has a fall-height greater than 8-feet. The west playground information will be coming in Addendum No. 2.
6. Contractor is responsible for their own material quantities, but the west playground measures approximately 7190+/- SF and the east playground is approximately 4870+/- SF.

END OF ADDENDUM NO.1

Platte County R-3 School District
 Siegrist Elementary Playground Turf
 PRE-BID CONFERENCE
 SIGN-IN SHEET

KVE Project No. C20_0482

Date: April 1, 2021

Name	Company	Phone	Email
James Williams	Field Turf	(573) 424-4039	james.williams@fieldturfcommercial.com
Paul Held	Synlawn	816-591-7917	thatsoe@synlawn.com
Hugo Lopez	NationWide Turf	816-572-2680	h.lopez@Nationwide
Alberto Rojo	Nationwide Turf	314-764-9312	arojo@nationwideturfusa.com
Craig Shonk	Midwest Synthetic Turf	816-668-6127	craig@midwestsynthetic.com
Jay Harris	PCR3		
Brock Hall *	Hall Turf	816.886.8624	brock@hallturf.com
David Wood *	Kaw Valley Engr	913.894.5150	wood@kvengr.com
Juli Foxworthy	incite Design Studio	816.979.3500	juli@inciteDesignStudio.com
* virtual attendee			

Cc: File



West Playground Image
Siegrest Elementary

1144395-01-05-01 • 02.12.2021



©2021 Landscape Structures. All Rights Reserved.



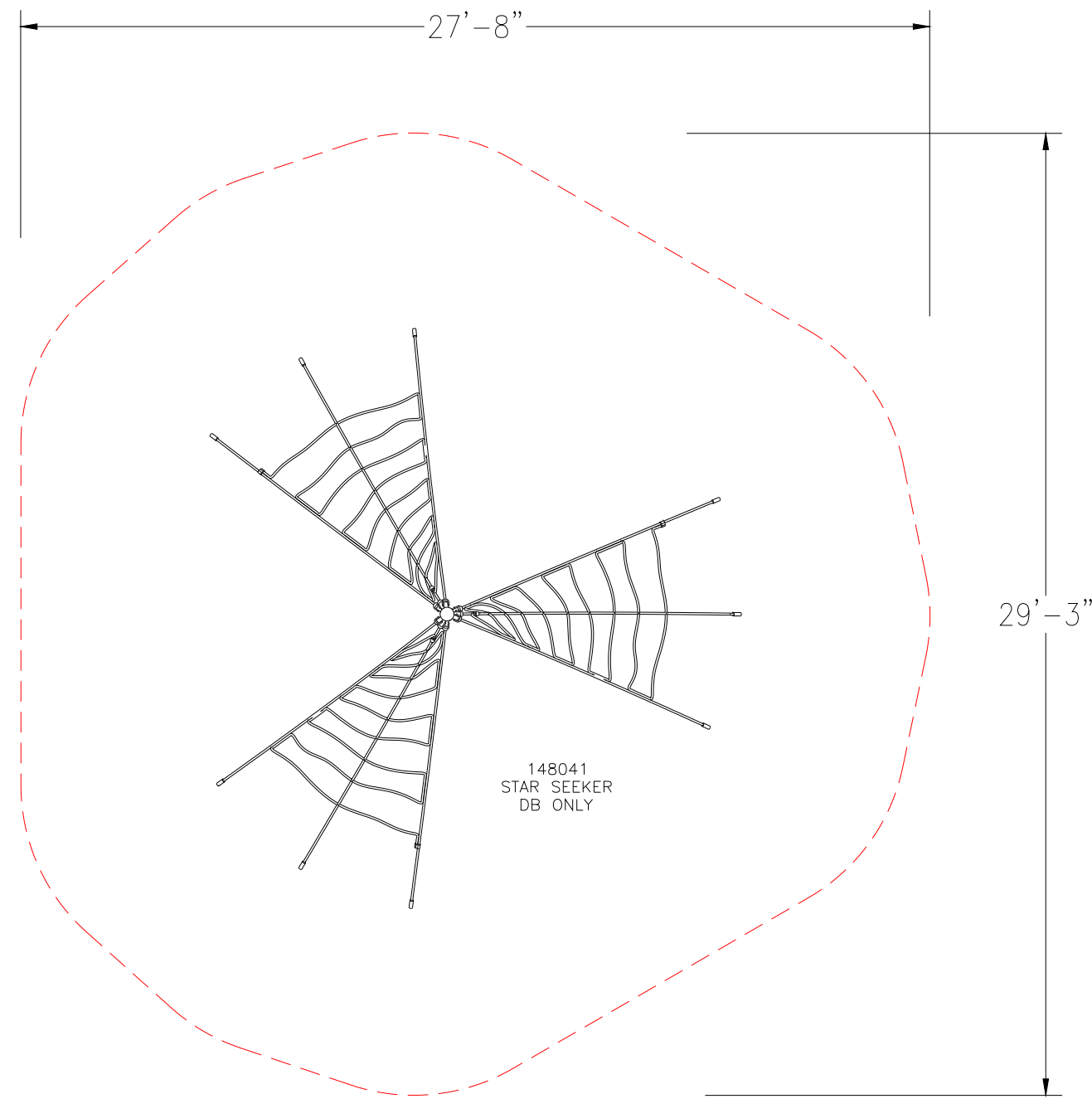
East Playground Image
Siegest Elementary



1144395-01-05-06 • 02.12.2021

©2021 Landscape Structures. All Rights Reserved.

Freestanding Play
(5-12 years)
Max Fall Height: 120 inches
TOTAL SQUARE FOOTAGE
625 SQ.FT.



landscape structures



The play components identified on this plan are IPEMA certified. (Unless model number is preceded with *) The use and layout of these components conform to the requirements of ASTM F1487. To verify product certification, visit www.ipema.org

THIS PLAY AREA & PLAY EQUIPMENT IS DESIGNED FOR AGES 5-12 YEARS UNLESS OTHERWISE NOTED ON PLAN.

IT IS THE MANUFACTURERS OPINION THAT THIS PLAY AREA DOES CONFORM TO THE A.D.A. ACCESSIBILITY STANDARDS, ASSUMING AN ACCESSIBLE PROTECTIVE SURFACING IS PROVIDED, AS INDICATED, OR WITHIN THE ENTIRE USE ZONE.

THIS CONCEPTUAL PLAN WAS BASED ON INFORMATION AVAILABLE TO US. PRIOR TO CONSTRUCTION, DETAILED SITE INFORMATION INCLUDING SITE DIMENSIONS, TOPOGRAPHY, EXISTING UTILITIES, SOIL CONDITIONS, AND DRAINAGE SOLUTIONS SHOULD BE OBTAINED, EVALUATED, & UTILIZED IN THE FINAL DESIGN. PLEASE VERIFY ALL DIMENSIONS OF PLAY AREA, SIZE, ORIENTATION, AND LOCATION OF ALL EXISTING UTILITIES, EQUIPMENT, AND SITE FURNISHINGS PRIOR TO ORDERING. SLIDES SHOULD NOT FACE THE HOT AFTERNOON SUN.

CHOOSE A PROTECTIVE SURFACING MATERIAL THAT HAS A CRITICAL HEIGHT VALUE TO MEET THE MAXIMUM FALL HEIGHT FOR THE EQUIPMENT (REF. ASTM F1487 STANDARD CONSUMER SAFETY PERFORMANCE SPECIFICATION FOR PLAYGROUND EQUIPMENT FOR PUBLIC USE, SECTION 8 CURRENT REVISION). THE SUBSURFACE MUST BE WELL DRAINED. IF THE SOIL DOES NOT DRAIN NATURALLY IT MUST BE TILED OR SLOPED 1/8" TO 1/4" PER FOOT TO A STORM SEWER OR A "FRENCH DRAIN".

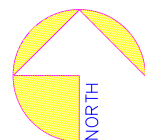
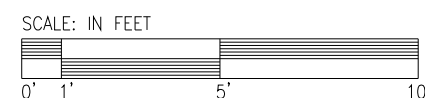
DESIGNED BY:

COPYRIGHT: 8/7/18
LANDSCAPE STRUCTURES, INC.
601 7th STREET SOUTH - P.O. BOX 198
DELANDO, MINNESOTA 55328
Ph: 1-800-328-0035 FAX: 1-763-972-6091

Date	Previous Drawing #	Initials

TOTAL ELEVATED PLAY COMPONENTS	0		0
TOTAL ELEVATED COMPONENTS ACCESSIBLE BY RAMP	0	REQUIRED	0
TOTAL ELEVATED COMPONENTS ACCESSIBLE BY TRANSFER	0	REQUIRED	0
TOTAL ACCESSIBLE GROUND LEVEL COMPONENTS SHOWN	1	REQUIRED	0
TOTAL DIFFERENT TYPES OF GROUND LEVEL COMPONENTS	1	REQUIRED	1

East Playground Star Seeker - Overhead View



Design
1230

Landscape
Structures

SYSTEM TYPE:
Freestanding

DRAWING #:
1230

