

VICINITY MAP
N.T.S

JACKSON COUNTY CORRECTIONAL INSTITUTION PROBATION DETENTION CENTER

GENERATOR/ATS UPGRADE + NEW 20KVA UPS

265 I W DAVIS RD,
JEFFERSON, GA 30549

APRIL 5, 2021
PROJECT NO. 21103



SATELLITE MAP
N.T.S

PROJECT TEAM

PROJECT ENGINEER
ENG GROUP, INC.
CONTACT: MITCH MAGHIARI
3100 FIVE FORKS TRICKUM RD, SUITE 601
LILBURN, GEORGIA 30047
TEL - (770) 573-3537
EMAIL - MITCHM@ENG-GROUP.COM

DRAWING LIST

T-0.0	TITLE SHEET
E-1.1	ONE LINE DIAGRAM - DEMO & NEW
E-1.2	ONE LINE DIAGRAM - FINAL LAYOUT
E-2.0	PARTIAL ONE LINE DIAGRAM - EXISTING CONDITIONS
E-2.1	PARTIAL SITE & FLOOR PLAN - POWER - DEMO
E-3.1	PARTIAL SITE & FLOOR PLAN - POWER - NEW
E-4.1	PARTIAL SITE & FLOOR PLAN - POWER - NEW
E-5.1	DETAIL
E-5.2	DETAILS
E-5.3	SPECIFICATION & SYMBOLS
E-5.4	GENERAL & DEMOLITION NOTES

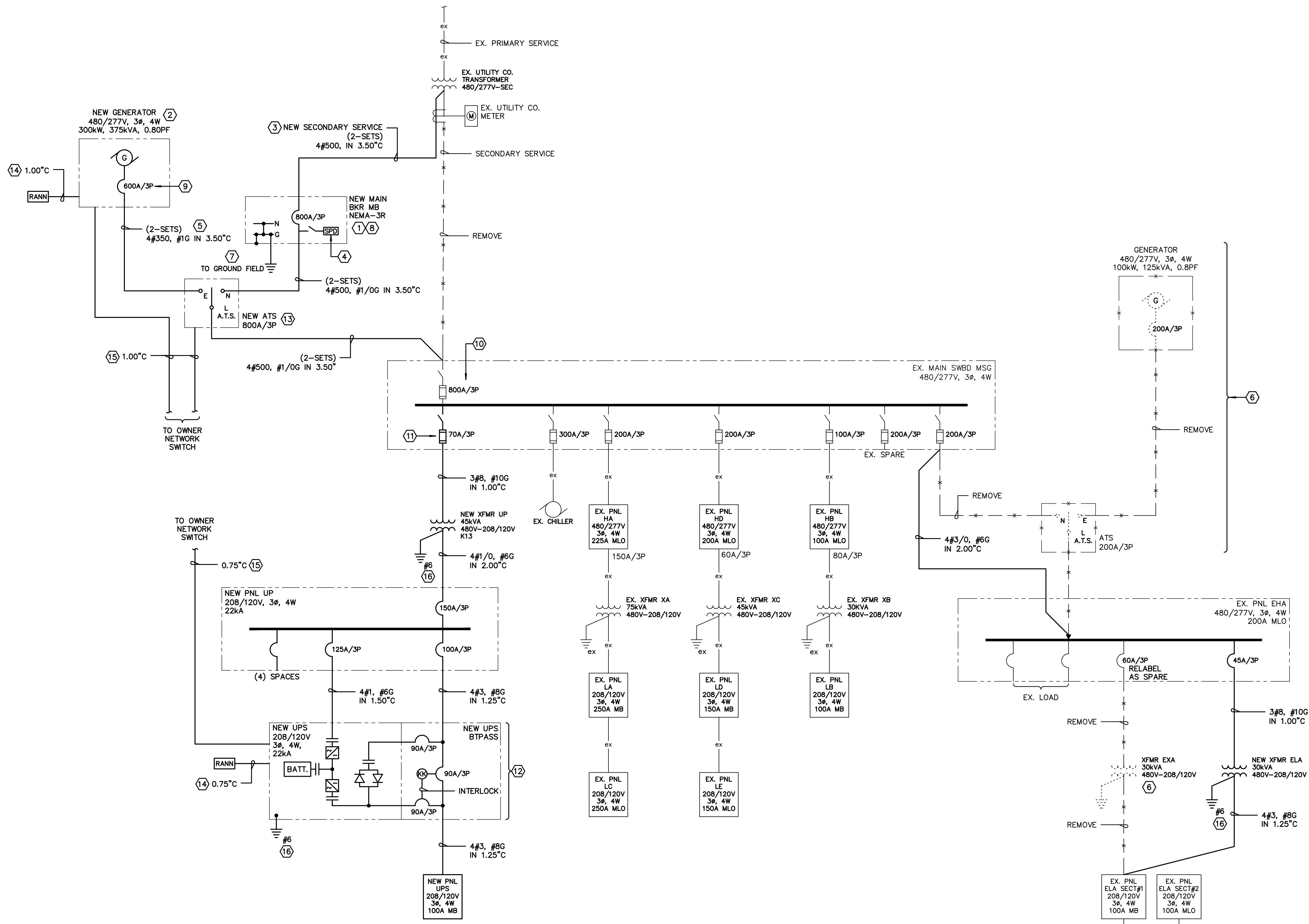
APPLICABLE CODES

INTERNATIONAL BUILDING CODE, 2018 EDITION,
INTERNATIONAL FIRE CODE, 2018 EDITION
INTERNATIONAL PLUMBING CODE, 2018 EDITION
INTERNATIONAL MECHANICAL CODE, 2018 EDITION
INTERNATIONAL FUEL GAS CODE, 2018 EDITION
NATIONAL ELECTRICAL CODE, 2020 EDITION
ALL THE ABOVE CODES SHALL COMPLY WITH CITY, COUNTY & GEORGIA AMENDMENTS

SCOPE OF PROJECT:

JACKSON COUNTRY CORRECTION INSTITUTION INTENDS TO:
 - REPLACE EXISTING 100kW GENERATOR WITH NEW 300kW GENERATOR
 - INSTALL A NEW MAIN BKR
 - REPLACE EXSITING 200A ATS WITH NEW 800A ATS
 - INSTALL NEW 20KVA UPS
 - MODIFY EXISTING POWER DISTRIBUTION SYSTEM AS REQUIRED BY NEW GENERATOR, ATS & UPS CONFIGURATION

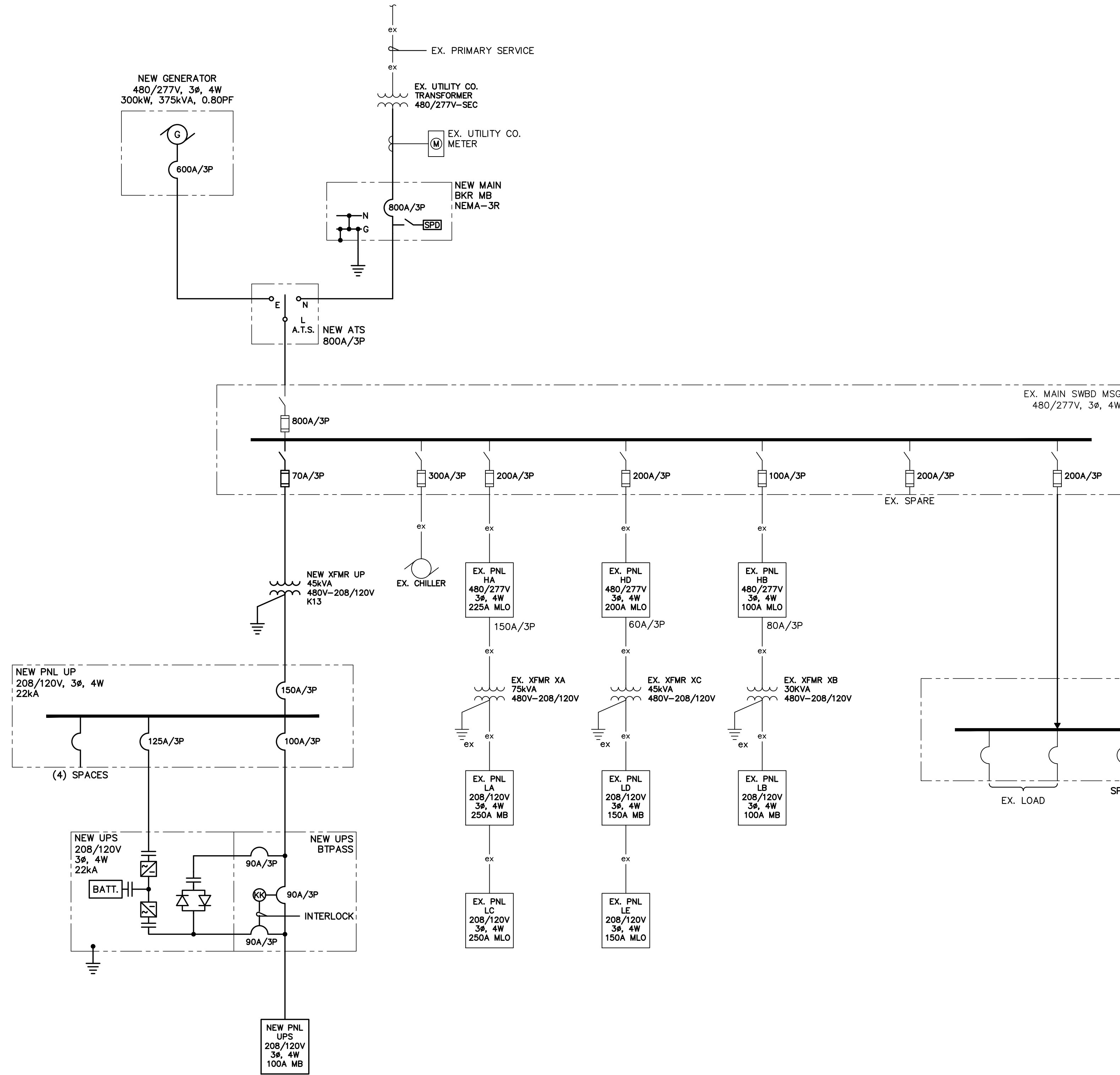
0	ISSUED FOR REVIEW	MM	CM/MM	04/05/21
REV. NO.	REVISION DESCRIPTION	APP'D.	DRN/CKD	DATE
EXCEPT AS MAY BE OTHERWISE PROVIDED BY CONTRACT THESE DRAWINGS AND SPECIFICATIONS ARE THE PROPERTY OF JACKSON COUNTY GA AND ARE ISSUED IN STRICT CONFIDENCE. THEY SHALL NOT BE REPRODUCED, COPIED, OR USED WITHOUT WRITTEN PERMISSION BY JACKSON COUNTY GA.		NAME JACKSON COUNTY CORRECTIONAL INSTITUTION PROBATION DETENTION CENTER 265 I W DAVIS RD, JEFFERSON, GA 30549		
ENG Group, Inc. 3100 FIVE FORKS TRICKUM RD, STE 601 LILBURN, GA 30047 TEL (770) 573-3537 FAX (866) 531-2419 EMAIL: mitchm@eng-group.com		TITLE TITLE SHEET		
DRAWN CM	CHECKED MM	APP'D. MM	SHEET	DRAWING NO. T-00
DATE 04/05/21	SCALE AS NOTED	ENG GROUP PROJECT NO. 21103		REV. 0



- NOTES:** (THIS SHEET ONLY, EXCEPT AS NOTED)
- ALL BREAKERS 100A AND LARGER SHALL BE SET AND TESTED BY APPROVED TESTING AGENCY AND RESULTING REPORT SUBMITTED TO ENGINEER PRIOR TO CONNECTING THE LOAD. BREAKER IS NOT TO BE PLACED INTO SERVICE UNTIL HAS BEEN TESTED AND A TESTING LABEL HAS BEEN APPLIED BY THE TESTING AGENCY.
 - NEUTRAL SHALL NOT BE BONDED TO GRD AT GENERATOR (TYPICAL).
 - VERIFY AND COMPLY WITH UTILITY COMPANY REQUIREMENTS FOR INSTALLATION OF SERVICES OF THIS TYPE.
 - SPD/SURGE PROTECTION DEVICE, 277/480V-3PH-4W-GND, 160KA PER PHASE, WITH AUXILIARY CONTACTS FOR MONITORING, COUNTER. THE LENGTH OF CABLES SHALL NOT EXCEED 4'-0". MANUFACTURER-SAME AS MAIN BREAKER (SHALL VE LOCATED IN BKR ENCLOSURE).
 - EXTERIOR FEEDERS SHALL BE INSTALLED UNDERGROUND (TYP).
 - EQUIPMENT SCHEDULED FOR REMOVAL AFTER EXISTING LOAD HAS BEEN TRANSFERRED TO THE NEW SYSTEM.
 - SEE GROUNDING PLAN AND DETAILS FOR ADDITIONAL REQUIREMENTS.
 - SERVICE ENTRANCE RATED, PROVIDE AUX CONTACT FOR FUTURE MONITORING (BKR OPEN/TRIPPED ALARM).
 - 100% RATED, PROVIDE AUX CONTACT FOR FUTURE MONITORING (BKR OPEN/TRIPPED ALARM).
 - REMOVE N-G CONNECTION WHEN LOAD IS TRANSFERRED TO NEW ATS/GEN SYSTEM. REMOVE GRD FAULT & ASSOCIATED WIRING + PROVIDE BLANK COVER PLATES.
 - PROVIDE NEW FUSED BUCKET TO MATCH EXISTING.
 - NEW UPS (STATIC UNINTERRUPTIBLE POWER SUPPLY) SYSTEM - EATON 93E OR APPROVED EQUAL (LIEBERT, APC).
 - SYSTEM WILL INCLUDE A RECTIFIER, INVERTER, STATIC BYPASS, BATTERY SYSTEM (MIN 15MIN RESERVE TIME)
 - BATTERY - VRLA. PROVIDE 5 YEARS FULL WARRANTY.
 - EXTERNAL MAINTENANCE BYPASS IN MATCHING SLIM-LINE CABINET.
 - UPGRADABLE FROM 20KVA TO 30KVA (PROVIDE ALTERNATE COST FOR 30KVA OPTION).
 - REMOTE ANNUNCIATION PANEL. PROVIDE THE FOLLOWING ANNUNCIATION
 - UPS ON BATTERY
 - LOW BATTERY
 - MAJOR ALARM
 - UPS FAILURE
 - ON STATIC BYPASS
 - ON MAINTENANCE BYPASS.
 - COMMUNICATIONS - SNMP/WEB ADAPTER + RELAY CONTACT ALARM INTERFACE + MODBUS RTU INTERFACE WITH SNMP/WEB CAPABILITY.
 - PROVIDE SHOP DWGS + START-UP + REPORTS + TRAINING (4 HRS) + OPERATION AND MAINTENANCE MANUAL.
 - UPS SHALL MONITOR BATTERIES AND PROVIDE STATUS TO END USER OF BATTERY REMAINING CAPACITY VIA FRONT PANEL ICON + REMOTE COMMUNICATION (BATTERY HEALTH MONITORING: REMOTE WARNING NOTIFICATION WHEN BATTERY CAPACITY FALLS BELOW 80% OF ORIGINAL CAPACITY)
 - THE UPS SYSTEM MANUFACTURER SHALL WARRANT ALL COMPONENTS OF THE SYSTEM AGAINST DEFECTS ON WORKMANSHIP AND MATERIAL FOR 36 MONTHS AFTER COMPLETION OF ACCEPTANCE TESTING.
 - A COMPLETE FUNCTIONAL TEST OF THE UPS SYSTEM + BATTERY TEST SHALL BE PERFORMED AT FACTORY + PROVIDE REPORT.
 - A COMPLETE FUNCTIONAL TEST OF THE UPS SYSTEM SHALL BE PERFORMED AT THE SITE + PROVIDE REPORT. PROVIDE SITE INTEGRATION TEST + REPORT.
 - ATS-WALL MOUNTED, ASCO OR APPROVED EQUAL PROVIDE:
 - KEY OPERATED THREE POSITION OPERATION SELECTOR SWITCH - NO LOAD TEST + AUTO + LOAD TEST.
 - METERING FOR CURRENT, VOLTAGE, REAL POWER, REACTIVE POWER, ENERGY USE, POWER FACTOR AND FREQUENCY ON THE LOAD SIDE. METERING SHALL BE TRUE RMS TYPE, 1% ACCURACY FOR VOLTAGE AND 0.5% FOR CURRENTS.
 - DRY CONTACTS FOR ALARMS AS INDICATED ON DETAILS.
 - MODBUS + TCP/IP PORTS.
 - ATS/ENGINE EXERCISER WITH ON/OFF POSITION + TO BE PROGRAMMED PER OWNERS REQUIREMENTS.
 - 30KVA RATING.
 - SETTINGS
 - ADJUSTABLE SOLID STATE TIME DELAY TRANSFER BETWEEN SOURCES, 3-15 SECONDS, SET AT 3 SECONDS.
 - ADJUSTABLE SOLID STATE TIME DELAY ON ENGINE START, 3-300 SECONDS MINIMUM, SET AT 3 SECONDS.
 - ADJUSTABLE SOLID STATE TIME DELAY ON RETRANSFER TO COMMERCIAL SOURCE, 0-9999 SECONDS MINIMUM, SET AT 300 SECONDS.
 - ADJUSTABLE SOLID STATE COOL-DOWN TIMER, 0-9999 SECONDS, SET AT 300 SECONDS.
 - FIELD START-UP + SITE INTEGRATION TEST.
 - SITE TRAINING (MIN 4 HRS).
 - 5 YEARS FULL WARRANTY.
 - PROVIDE WIRING PER MANUFACTURER APPROVED SHOP DWGS.
 - PROVIDE CAT-5E WIRING TO OWNER'S NETWORK SWITCH. COORDINATE TERMINATION LOCATION WITH OWNER. TEST INTERFACE WITH OWNER IT DEPARTMENT + PROVIDE REPORT FOR CLOSE-OUT.
 - EXTEND WIRING TO MAIN SWBD GRD AND CONNECT THERETO.

1 ONE LINE DIAGRAM - DEMO & NEW
E-1.1 SCALE: N.T.S

0	ISSUED FOR REVIEW	MM	CM/MM	04/05/21
REV. NO.	REVISION DESCRIPTION	APP'D.	DRN/CDD	DATE
EXCEPT AS MAY BE OTHERWISE PROVIDED BY CONTRACT THESE DRAWINGS AND SPECIFICATIONS ARE THE PROPERTY OF JACKSON COUNTY GA AND ARE ISSUED IN STRICT CONFIDENCE. THEY SHALL NOT BE REPRODUCED, COPIED, OR USED WITHOUT WRITTEN PERMISSION BY JACKSON COUNTY GA.		NAME JACKSON COUNTY CORRECTIONAL INSTITUTION PROBATION DETENTION CENTER 265 I W DAVIS RD, JEFFERSON, GA 30549		
ENG Group, Inc. 3100 FIVE FORKS TRUCKUM RD, STE 601 LILBURN, GA 30047 TEL: (770) 573-3537 FAX: (866) 531-2419 EMAIL: mitchm@eng-group.com		TITLE ONE LINE DIAGRAM - DEMO & NEW		
DRAWN	CHECKED	APP'D.	SHEET	DRAWING NO.
CM	MM	MM		E-11
DATE	SCALE	END GROUP PROJECT NO.		REV.
04/05/21	AS NOTED	21103		0



SCHEDULE OF PANEL UPS (NEW)

MAINS: LUGS ONLY MAIN BREAKER 100A MB
 VOLTAGE: 208Y/120V, 30, 4W 208V, 30, 3W
 480Y/277V, 30, 4W 480V, 30, 3W
 200% NEUTRAL 575V, 30, 3W
 GROUND ISOLATED GROUND
 MOUNTING: FLUSH SURFACE
 SCRR: 22kA

CKT NO	DESCRIPTION	WIRING				LOAD (KVA)	NOTE S	BKR	POL ES	PH ASE	POL ES	BKR	NOTE S	LOAD (KVA)	WIRING				DESCRIPTION	CKT NO
		PH	N	GND	COND										PH	N	GND	COND		
1	EMER LTG - DORMITORY#1 & #2				0.20		20	1	A		1	20						SPARE	2	
3	EMER LTG - DORMITORY#3 & #4				0.20		20	1	B		1	20						SPARE	4	
5	EMER LTG - SECURITY RM				0.20		20	1	C		1	20						SPARE	6	
7	SECURITY PNL				0.80		20	1	A		1	20						SPARE	8	
9	REC - SECURITY RM				1.00		20	1	B		1	20						SPARE	10	
11	TELEPHONE BOARD - SECURITY RM				0.60		20	1	C		1	20						SPARE	12	
13	INTERCOM - SECURITY RM				0.60		20	1	A		1	20						SPARE	14	
15	DOOR LOCKS- SECURITY RM				0.60		20	1	B		1	20						SPARE	16	
17	REC - ACTIVITY RM & OFFICE				0.60		20	1	C									SPACE	18	
19	REC - OFFICE				0.60		20	1	A									SPACE	20	
21	REC - OFFICE				0.60		20	1	B									SPACE	22	
23	SECURITY SYSTEM - SECURITY CTRL RM				0.80		20	1	C									SPACE	24	
25	REC - ELECT + IT CLOSET				0.60		20	1	A									SPACE	26	
27	REC - IT CLOSET				0.60		20	1	B									SPACE	28	
29	REC - OFFICE, DETAINEE FILE STOR.				0.60		20	1	C									SPACE	30	
31	REC - RECORD, OFFICE				0.60		20	1	A									SPACE	32	
33	SPARE						20	1	B									SPACE	34	
35	SPARE						20	1	C									SPACE	36	
37	SPARE						20	1	A									SPACE	38	
39	SPARE						20	1	B									SPACE	40	
41	SPARE						20	1	C									SPACE	42	

TOTAL LOADS CONNECTED (KVA): 9.20

NOTES: 1. BRANCH BREAKERS SHALL BE 20 AMP, 1 POLE UNLESS NOTED OTHERWISE.
 2. BRANCH CIRCUIT WIRING SHALL BE #12 WIRE, #12 GND IN 0.50" CONDUIT, UNLESS NOTED OTHERWISE.

1 ONE LINE DIAGRAM - FINAL LAYOUT
E-1.2 SCALE: N.T.S

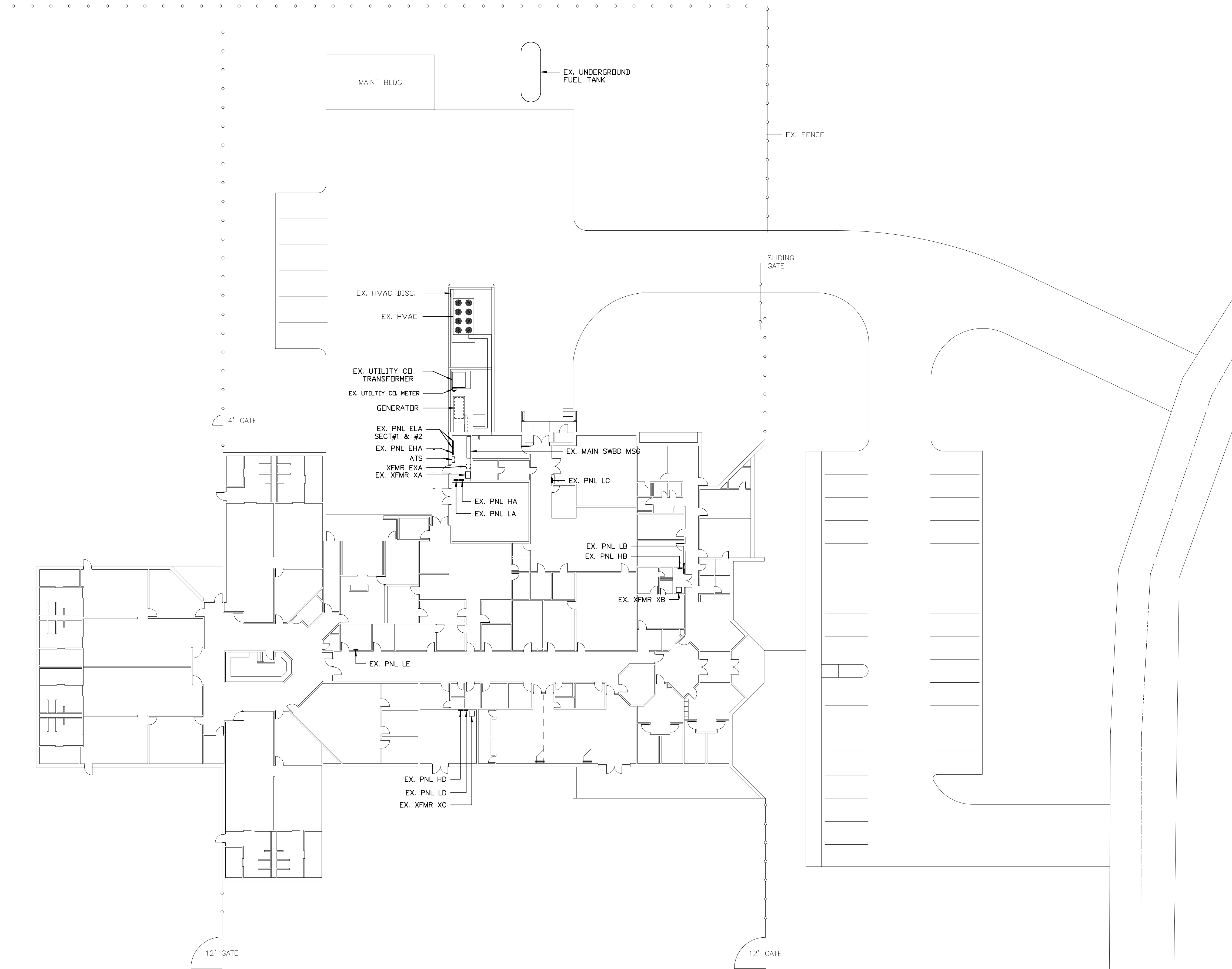
REV. NO.	REVISION DESCRIPTION	APP'D.	CHK'D.	DATE
0	ISSUED FOR REVIEW	MM	CM/MM	04/05/21

EXCEPT AS MAY BE OTHERWISE PROVIDED BY CONTRACT THESE DRAWINGS AND SPECIFICATIONS ARE THE PROPERTY OF JACKSON COUNTY GA AND ARE ISSUED IN STRICT CONFIDENCE. THEY SHALL NOT BE REPRODUCED, COPIED, OR USED WITHOUT WRITTEN PERMISSION BY JACKSON COUNTY GA.

JACKSON COUNTY CORRECTIONAL INSTITUTION
 PROBATION DETENTION CENTER
 265 I W DAVIS RD,
 JEFFERSON, GA 30549

ENG Group, Inc.
 3100 FIVE FORKS TRICKUM RD, STE 601
 LILBURN, GA 30047
 TEL: (770) 575-3537 FAX: (866) 531-2419
 EMAIL: mitchm@eng-group.com

DRWN: CM	CHKD: MM	APP'D: MM	SHEET: 12	DRAWING NO: E-12	REV: 0
DATE: 04/05/21	SCALE: AS NOTED	ENG GROUP PROJECT NO: 21103			

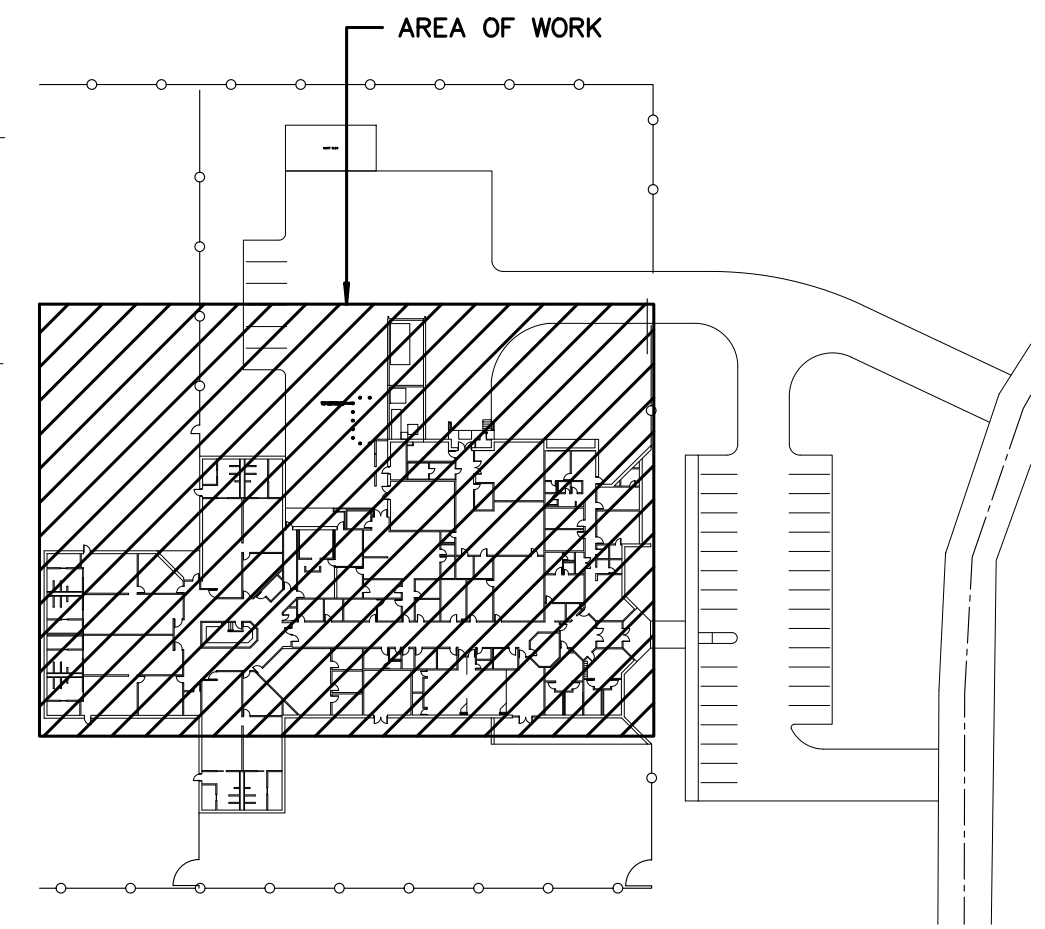
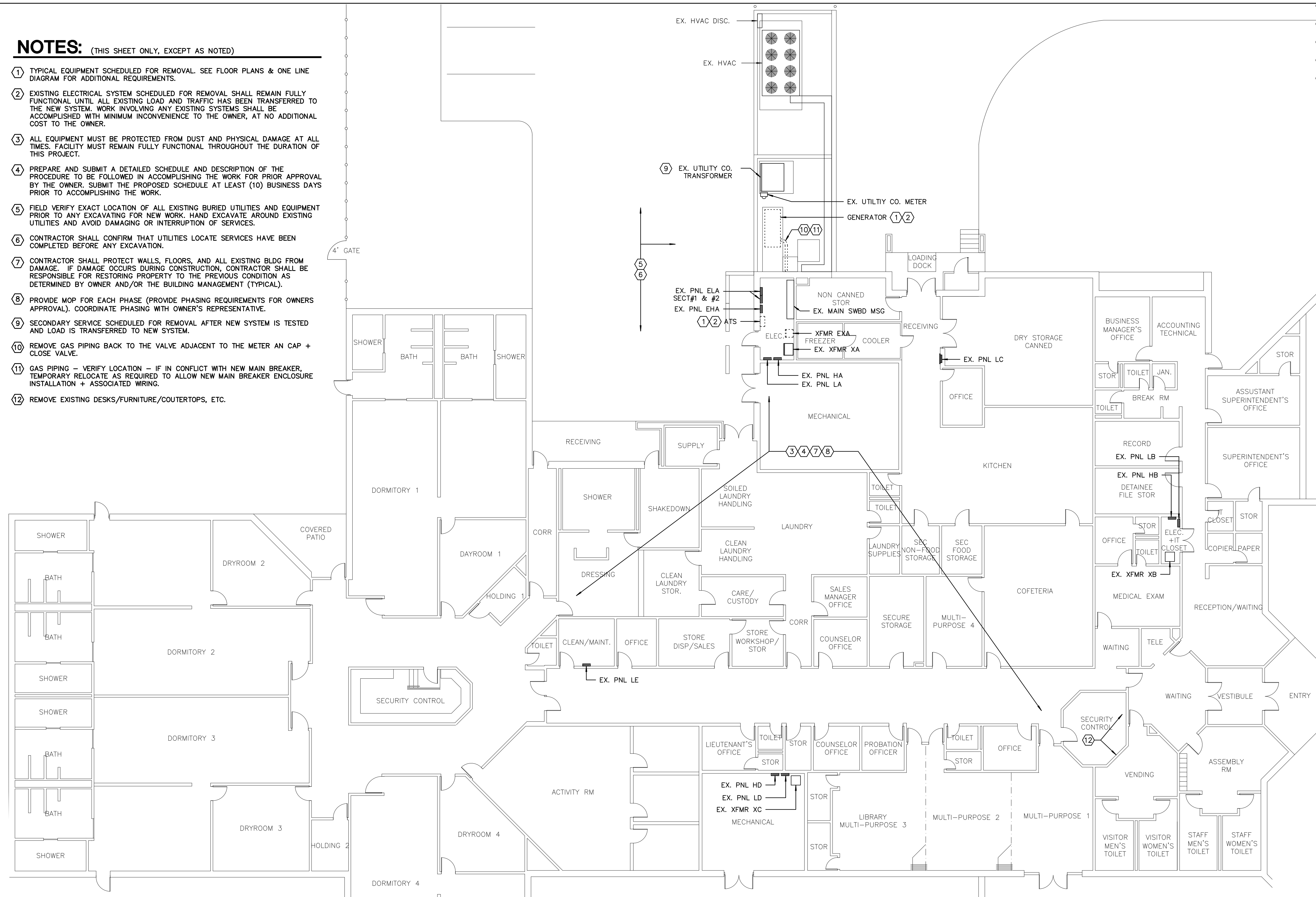


1 PARTIAL SITE & FLOOR PLAN - EXISTING CONDITIONS
 E-2.0 SCALE: 1" = 20'

0	ISSUED FOR REVIEW	MM	CM/MM	04/05/21
REV. NO.	REVISION DESCRIPTION	APP'D.	DRN/CRD	DATE
EXCEPT AS MAY BE OTHERWISE PROVIDED BY CONTRACT THESE DRAWINGS AND SPECIFICATIONS ARE THE PROPERTY OF JACKSON COUNTY GA AND ARE ISSUED IN STRICT CONFIDENCE. THEY SHALL NOT BE REPRODUCED, COPIED, OR USED WITHOUT WRITTEN PERMISSION BY JACKSON COUNTY GA.		NAME JACKSON COUNTY CORRECTIONAL INSTITUTION PROBATION DETENTION CENTER 265 I W DAVIS RD, JEFFERSON, GA 30549		
ENG Group, Inc. 3100 FIVE FORKS TRICKUM RD, STE 601 LILBURN, GA 30047 TEL: (770) 575-3537 FAX: (866) 531-2419 EMAIL: mitchm@eng-group.com		TITLE PARTIAL SITE & FLOOR PLAN - EXISTING CONDITIONS		
DRWN	CM	CHECKED	MM	APP'D.
DATE	04/05/21	SCALE	AS NOTED	ENG GROUP PROJECT NO.
				21103
SHEET				DRWING NO.
				E-20
				REV.
				0

NOTES: (THIS SHEET ONLY, EXCEPT AS NOTED)

- 1 TYPICAL EQUIPMENT SCHEDULED FOR REMOVAL. SEE FLOOR PLANS & ONE LINE DIAGRAM FOR ADDITIONAL REQUIREMENTS.
- 2 EXISTING ELECTRICAL SYSTEM SCHEDULED FOR REMOVAL SHALL REMAIN FULLY FUNCTIONAL UNTIL ALL EXISTING LOAD AND TRAFFIC HAS BEEN TRANSFERRED TO THE NEW SYSTEM. WORK INVOLVING ANY EXISTING SYSTEMS SHALL BE ACCOMPLISHED WITH MINIMUM INCONVENIENCE TO THE OWNER, AT NO ADDITIONAL COST TO THE OWNER.
- 3 ALL EQUIPMENT MUST BE PROTECTED FROM DUST AND PHYSICAL DAMAGE AT ALL TIMES. FACILITY MUST REMAIN FULLY FUNCTIONAL THROUGHOUT THE DURATION OF THIS PROJECT.
- 4 PREPARE AND SUBMIT A DETAILED SCHEDULE AND DESCRIPTION OF THE PROCEDURE TO BE FOLLOWED IN ACCOMPLISHING THE WORK FOR PRIOR APPROVAL BY THE OWNER. SUBMIT THE PROPOSED SCHEDULE AT LEAST (10) BUSINESS DAYS PRIOR TO ACCOMPLISHING THE WORK.
- 5 FIELD VERIFY EXACT LOCATION OF ALL EXISTING BURIED UTILITIES AND EQUIPMENT PRIOR TO ANY EXCAVATING FOR NEW WORK. HAND EXCAVATE AROUND EXISTING UTILITIES AND AVOID DAMAGING OR INTERRUPTION OF SERVICES.
- 6 CONTRACTOR SHALL CONFIRM THAT UTILITIES LOCATE SERVICES HAVE BEEN COMPLETED BEFORE ANY EXCAVATION.
- 7 CONTRACTOR SHALL PROTECT WALLS, FLOORS, AND ALL EXISTING BLDG FROM DAMAGE. IF DAMAGE OCCURS DURING CONSTRUCTION, CONTRACTOR SHALL BE RESPONSIBLE FOR RESTORING PROPERTY TO THE PREVIOUS CONDITION AS DETERMINED BY OWNER AND/OR THE BUILDING MANAGEMENT (TYPICAL).
- 8 PROVIDE MOP FOR EACH PHASE (PROVIDE PHASING REQUIREMENTS FOR OWNERS APPROVAL). COORDINATE PHASING WITH OWNER'S REPRESENTATIVE.
- 9 SECONDARY SERVICE SCHEDULED FOR REMOVAL AFTER NEW SYSTEM IS TESTED AND LOAD IS TRANSFERRED TO NEW SYSTEM.
- 10 REMOVE GAS PIPING BACK TO THE VALVE ADJACENT TO THE METER AN CAP + CLOSE VALVE.
- 11 GAS PIPING - VERIFY LOCATION - IF IN CONFLICT WITH NEW MAIN BREAKER, TEMPORARY RELOCATE AS REQUIRED TO ALLOW NEW MAIN BREAKER ENCLOSURE INSTALLATION + ASSOCIATED WRING.
- 12 REMOVE EXISTING DESKS/FURNITURE/COUTERTOPS, ETC.



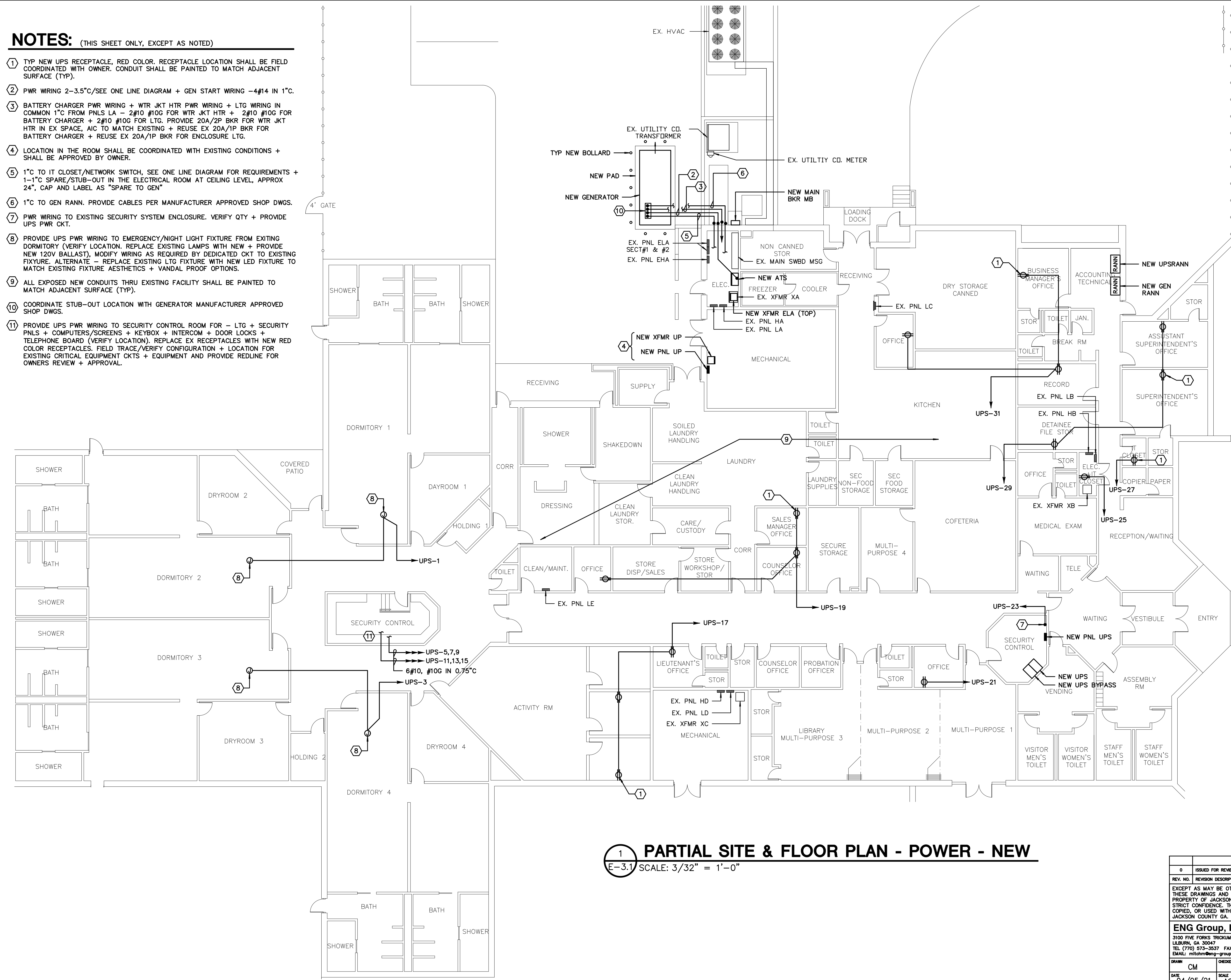
KEY PLAN
SCALE: N.T.S

1 PARTIAL SITE & FLOOR PLAN - POWER - DEMO
SCALE: 3/32" = 1'-0"

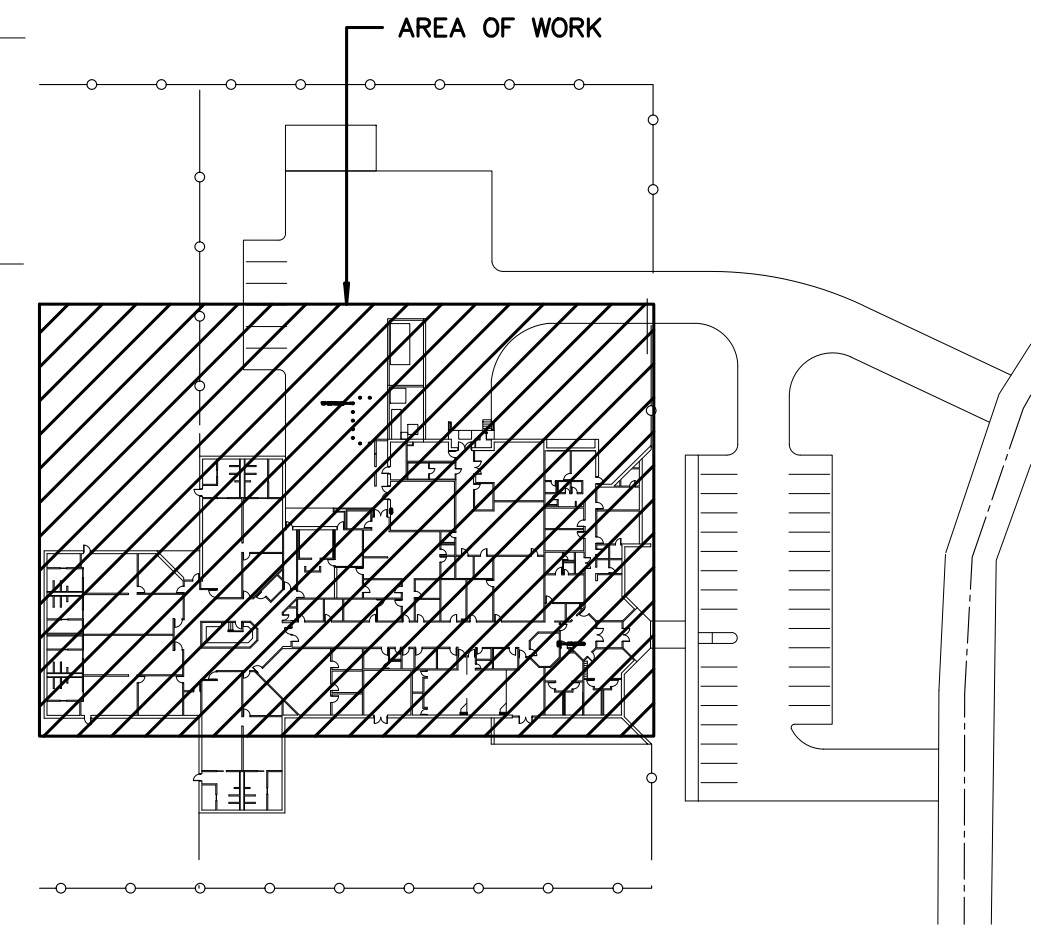
0	ISSUED FOR REVIEW	MM	CM/AM	04/05/21
REV. NO.	REVISION DESCRIPTION	APP'D.	DRN/CHKD	DATE
EXCEPT AS MAY BE OTHERWISE PROVIDED BY CONTRACT THESE DRAWINGS AND SPECIFICATIONS ARE THE PROPERTY OF JACKSON COUNTY GA AND ARE ISSUED IN STRICT CONFIDENCE. THEY SHALL NOT BE REPRODUCED, COPIED, OR USED WITHOUT WRITTEN PERMISSION BY JACKSON COUNTY GA.		NAME JACKSON COUNTY CORRECTIONAL INSTITUTION PROBATION DETENTION CENTER 265 I W DAVIS RD, JEFFERSON, GA 30549		
ENG Group, Inc. 3100 FIVE FORKS TRUCKUM RD, STE 601 LILBURN, GA 30047 TEL: (770) 575-3537 FAX: (866) 531-2419 EMAIL: mitchm@eng-group.com		TITLE PARTIAL SITE & FLOOR PLAN - POWER - DEMO		
DRAWN CM	CHECKED MM	APP'D. MM	SHEET E-21	REV. 0
DATE 04/05/21	SCALE AS NOTED	ENG GROUP PROJECT NO. 21103		

NOTES: (THIS SHEET ONLY, EXCEPT AS NOTED)

- 1 TYP NEW UPS RECEPTACLE, RED COLOR. RECEPTACLE LOCATION SHALL BE FIELD COORDINATED WITH OWNER. CONDUIT SHALL BE PAINTED TO MATCH ADJACENT SURFACE (TYP).
- 2 PWR WIRING 2-3.5°C/SEE ONE LINE DIAGRAM + GEN START WIRING -4#14 IN 1" C.
- 3 BATTERY CHARGER PWR WIRING + WTR JKT HTR PWR WIRING + LTG WIRING IN COMMON 1" C FROM PNLS LA - 2#10 #10G FOR WTR JKT HTR + 2#10 #10G FOR BATTERY CHARGER + 2#10 #10G FOR LTG. PROVIDE 20A/2P BKR FOR WTR JKT HTR IN EX SPACE, AIC TO MATCH EXISTING + REUSE EX 20A/1P BKR FOR BATTERY CHARGER + REUSE EX 20A/1P BKR FOR ENCLOSURE LTG.
- 4 LOCATION IN THE ROOM SHALL BE COORDINATED WITH EXISTING CONDITIONS + SHALL BE APPROVED BY OWNER.
- 5 1" C TO IT CLOSET/NETWORK SWITCH, SEE ONE LINE DIAGRAM FOR REQUIREMENTS + 1-1" C SPARE/STUB-OUT IN THE ELECTRICAL ROOM AT CEILING LEVEL, APPROX 24", CAP AND LABEL AS "SPARE TO GEN"
- 6 1" C TO GEN RANN. PROVIDE CABLES PER MANUFACTURER APPROVED SHOP DWGS.
- 7 PWR WIRING TO EXISTING SECURITY SYSTEM ENCLOSURE. VERIFY QTY + PROVIDE UPS PWR CKT.
- 8 PROVIDE UPS PWR WIRING TO EMERGENCY/NIGHT LIGHT FIXTURE FROM EXITING DORMITORY (VERIFY LOCATION. REPLACE EXISTING LAMPS WITH NEW + PROVIDE NEW 120V BALLAST), MODIFY WIRING AS REQUIRED BY DEDICATED CKT TO EXISTING FIXTURE. ALTERNATE - REPLACE EXISTING LTG FIXTURE WITH NEW LED FIXTURE TO MATCH EXISTING FIXTURE AESTHETICS + VANDAL PROOF OPTIONS.
- 9 ALL EXPOSED NEW CONDUITS THRU EXISTING FACILITY SHALL BE PAINTED TO MATCH ADJACENT SURFACE (TYP).
- 10 COORDINATE STUB-OUT LOCATION WITH GENERATOR MANUFACTURER APPROVED SHOP DWGS.
- 11 PROVIDE UPS PWR WIRING TO SECURITY CONTROL ROOM FOR - LTG + SECURITY PNLS + COMPUTERS/SCREENS + KEYBOX + INTERCOM + DOOR LOCKS + TELEPHONE BOARD (VERIFY LOCATION), REPLACE EX RECEPTABLES WITH NEW RED COLOR RECEPTABLES. FIELD TRACE/VERIFY CONFIGURATION + LOCATION FOR EXISTING CRITICAL EQUIPMENT CKTS + EQUIPMENT AND PROVIDE REDLINE FOR OWNERS REVIEW + APPROVAL.



1 PARTIAL SITE & FLOOR PLAN - POWER - NEW
 E-3.1 SCALE: 3/32" = 1'-0"

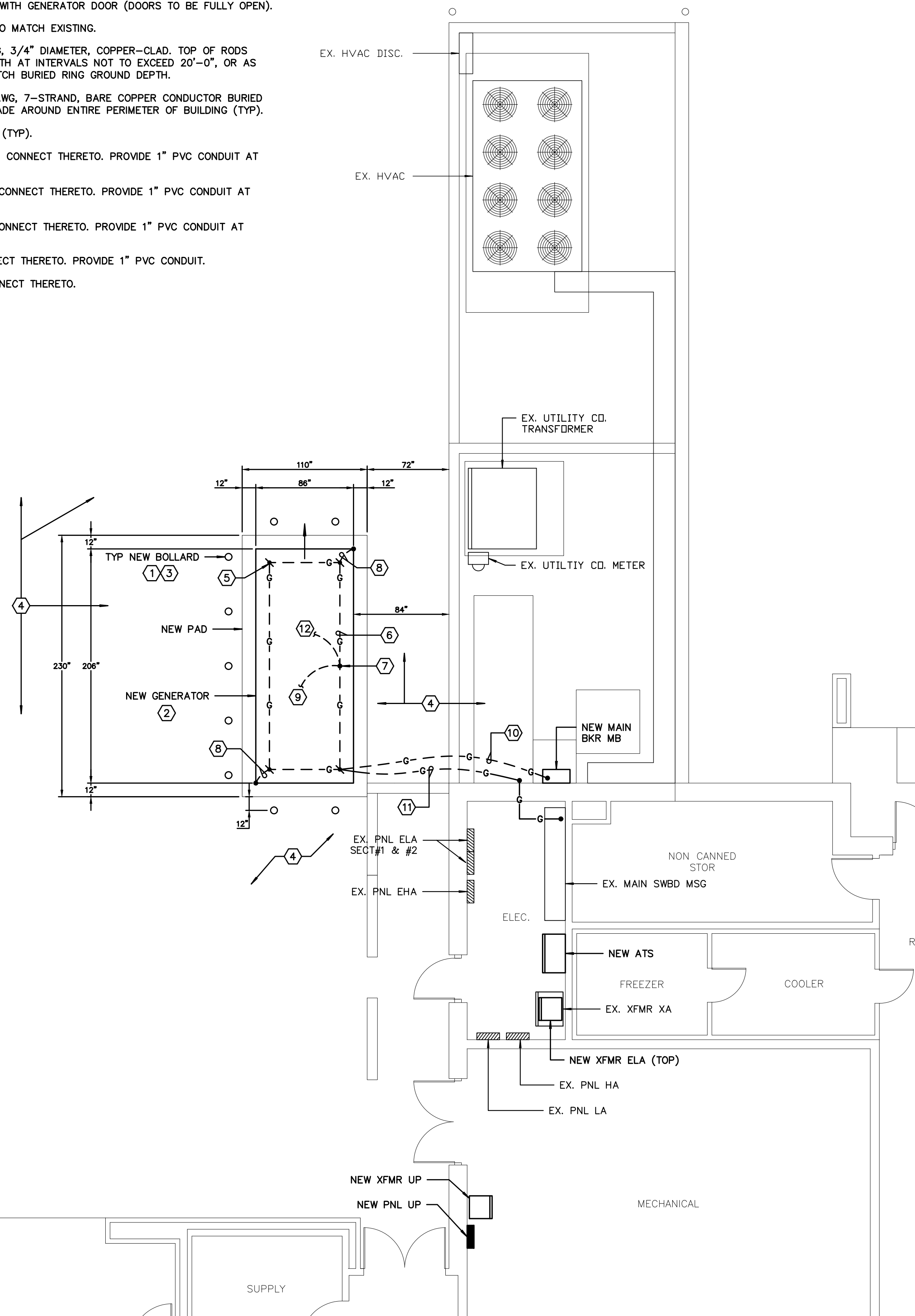


KEY PLAN
 SCALE: N.T.S.

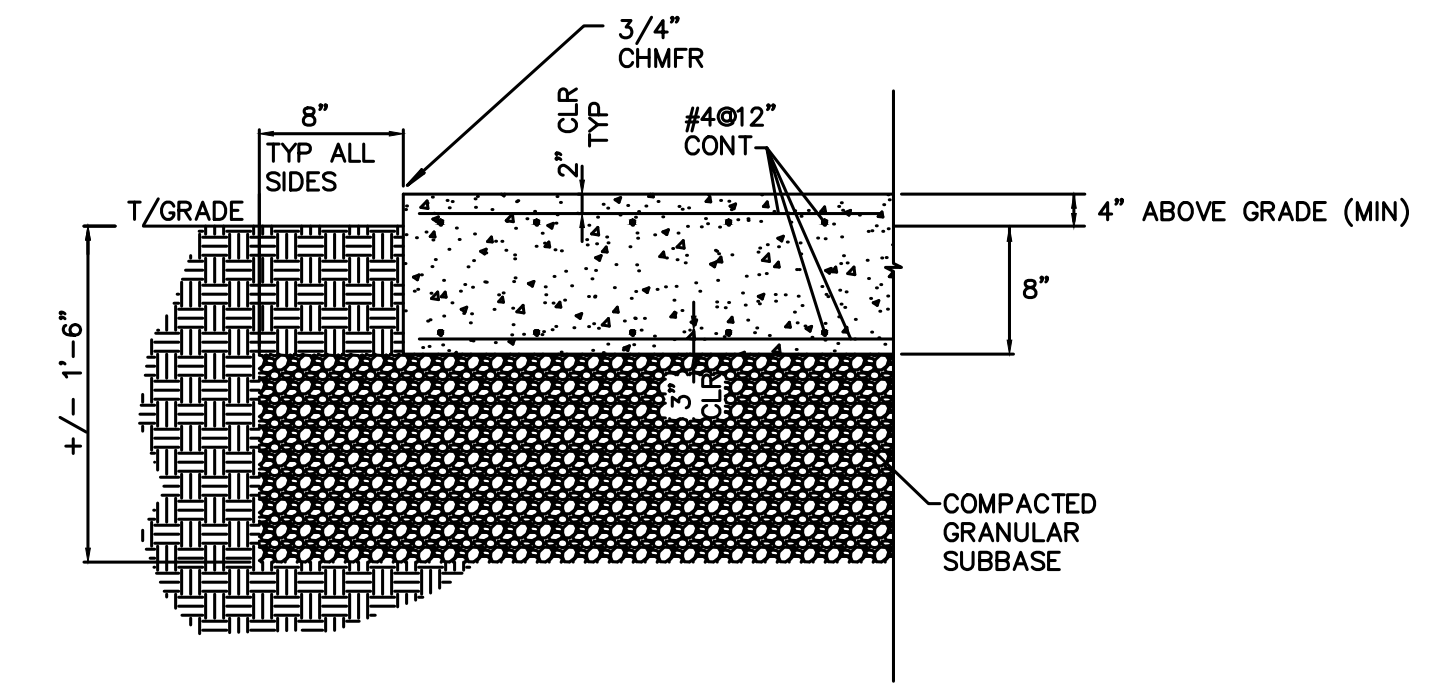
REV. NO.	REVISION DESCRIPTION	APP'D.	CHK'D.	DATE
0	ISSUED FOR REVIEW	MM	CM/AM	04/05/21
EXCEPT AS MAY BE OTHERWISE PROVIDED BY CONTRACT THESE DRAWINGS AND SPECIFICATIONS ARE THE PROPERTY OF JACKSON COUNTY GA AND ARE ISSUED IN STRICT CONFIDENCE. THEY SHALL NOT BE REPRODUCED, COPIED, OR USED WITHOUT WRITTEN PERMISSION BY JACKSON COUNTY GA.				
ENG Group, Inc. 3100 FIVE FORKS TRICKUM RD, STE 601 LILBURN, GA 30047 TEL: (770) 575-3537 FAX: (866) 531-2419 EMAIL: mitchm@eng-group.com		NAME: JACKSON COUNTY CORRECTIONAL INSTITUTION PROBATION DETENTION CENTER 265 I W DAVIS RD, JEFFERSON, GA 30549		
DRAWN: CM CHECKED: MM DATE: 04/05/21		TITLE: PARTIAL SITE & FLOOR PLAN - POWER - NEW SHEET: E-31 REV: 0		

NOTES: (THIS SHEET ONLY, EXCEPT AS NOTED)

- ① PROVIDE NEW BOLLARD (TYP), SEE DETAILS FOR REQUIREMENTS.
- ② COORDINATE STUB-OUT LOCATION WITH OWNER'S FURNISHED GEN SHOP DWGS.
- ③ COORDINATE FINAL BOLLARDS LOCATIONS WITH GENERATOR DOOR (DOORS TO BE FULLY OPEN).
- ④ PATCH ASPHALT AND CONCRETE AREAS TO MATCH EXISTING.
- ⑤ TYPICAL DRIVEN GROUND ROD - 10' LONG, 3/4" DIAMETER, COPPER-CLAD. TOP OF RODS SHALL BE DRIVEN INTO UNDISTURBED EARTH AT INTERVALS NOT TO EXCEED 20'-0", OR AS INDICATED, TO A DEPTH OF 2'-6" TO MATCH BURIED RING GROUND DEPTH.
- ⑥ PROVIDE BURIED RING GROUND, (1) 2/0 AWG, 7-STRAND, BARE COPPER CONDUCTOR BURIED MINIMUM 2'-6" DEEP BELOW FINISHED GRADE AROUND ENTIRE PERIMETER OF BUILDING (TYP).
- ⑦ PROVIDE EXOTHERMIC WELD FOR THE TAP (TYP).
- ⑧ #2/0 TO THE GENERATOR SKID BASE AND CONNECT THERETO. PROVIDE 1" PVC CONDUIT AT STUB-OUT LOCATION (TYPICAL).
- ⑨ #2/0 TO THE GENERATOR GRD BUS AND CONNECT THERETO. PROVIDE 1" PVC CONDUIT AT STUB-OUT LOCATION (TYPICAL).
- ⑩ #2/0 TO NEW MAIN BKR GRD BUS AND CONNECT THERETO. PROVIDE 1" PVC CONDUIT AT STUB-OUT LOCATION.
- ⑪ #2/0 TO SWBD MSG GRD BUS AND CONNECT THERETO. PROVIDE 1" PVC CONDUIT.
- ⑫ #2/0 TO THE CONCRETE REBAR AND CONNECT THERETO.



1 PARTIAL SITE & FLOOR PLAN - POWER - NEW
E-4.1 SCALE: 3/16" = 1'-0"

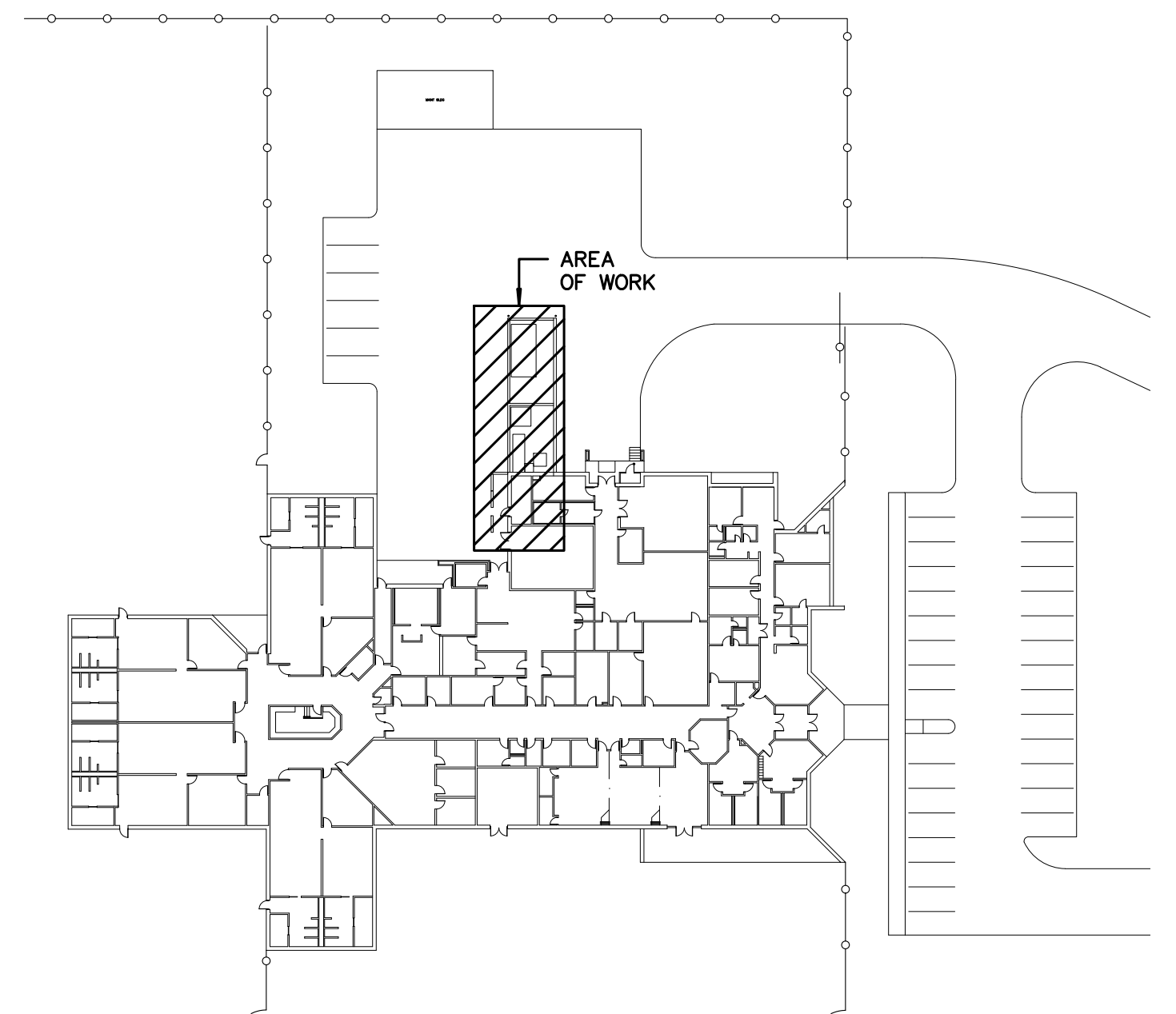


- NOTES:**
1. GENERATOR PAD DIMENSION SHALL BE COORDINATED WITH GENERATOR VENDOR APPROVED SHOP DRAWINGS. THE PAD SHALL EXTEND MIN 12" OVER THE GENERATOR FOOTPRINT EACH SIDE.
 2. FIELD CONDITIONS ASSUMED ARE 2,000 PSF MIN BEARING PRESSURE AND WATER TABLE 3'-6" MIN BELOW GRADE. FIELD VERIFY.
 3. DO NOT UNDERMINE EXISTING FOUNDATIONS. FIELD COORDINATE EXISTING CONDITIONS.
 4. CONTRACTOR SHALL VERIFY EXISTING CONDITIONS & NOTIFY VZB.
 5. DIMENSIONS SHALL BE COORDINATED WITH VENDORS APPROVED SHOP DWGS. THE PAD SHALL EXTEND MIN 12" OVER THE EQUIPMENT FOOTPRINT ON EACH SIDE.
 6. FIELD VERIFY AND COORDINATE WITH EXISTING SLOPE - PAD SHALL BE MIN 8" BELOW GRADE

2 EQUIPMENT PAD DETAIL
E-4.1 SCALE: N.T.S

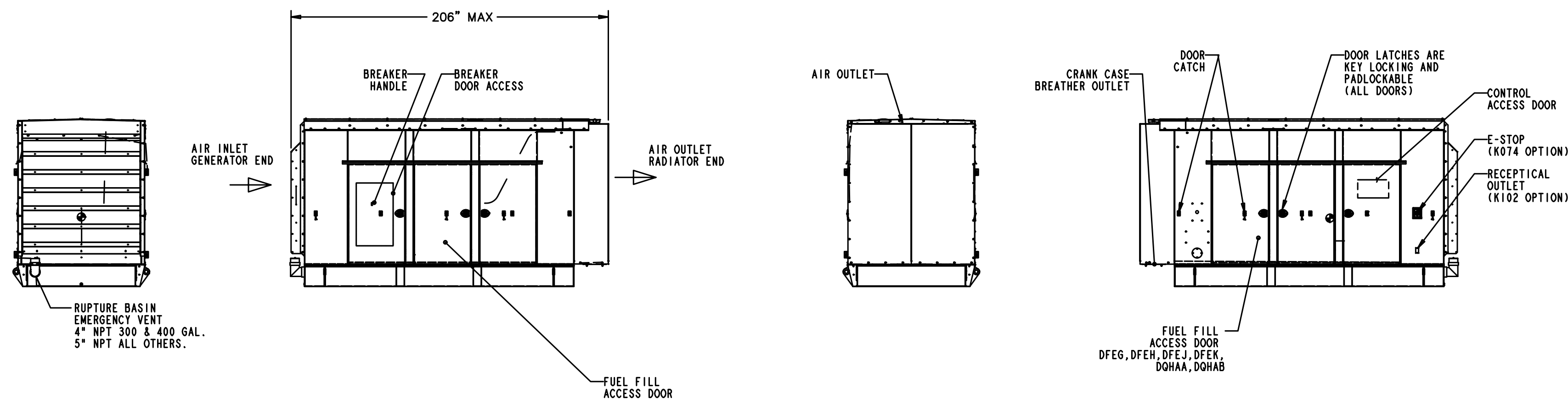
CONCRETE AND REINFORCEMENT NOTES

- CAST-IN-PLACE CONCRETE:**
1. CONCRETE WORK SHALL CONFORM TO ACI 318-05 AND CRSI STANDARDS.
 2. DESIGN OF CONCRETE ELEMENTS INCLUDING FOOTINGS AND SLABS IS IN ACCORDANCE WITH ACI 318-05 (BUILDING CODE REQUIREMENTS FOR STRUCTURAL CONCRETE).
 3. CONCRETE SHALL HAVE THE FOLLOWING MINIMUM SPECIFIED 14-DAY COMPRESSIVE STRENGTH - 4,000 PSI.
 5. DEFECTIVE AREAS IN CONCRETE INCLUDING, BUT NOT LIMITED TO, HONEY-COMBING, SPALLS, AND CRACKS WITH WIDTHS EXCEEDING 0.01 INCH SHALL BE REPAIRED. EXTENT OF DEFECTIVE AREA TO BE DETERMINED BY THE STRUCTURAL ENGINEER.
 6. CONCRETE MIX DESIGN FOR 4000 PSI CONCRETE SHALL BE BASED ON A MAXIMUM AGGREGATE SIZE OF 1 INCH, MAXIMUM WATER/CEMENT RATIO OF .58 FOR NON-AIR-ENTRAINED CONCRETE AND .46 FOR AIR-ENTRAINED CONCRETE AND A MAXIMUM SLUMP OF 4 INCHES. AIR-ENTRAINED CONCRETE SHALL BE USED FOR EXTERIOR EXPOSED CONCRETE WITH AN AIR CONTENT BETWEEN 5.5 AND 7.5 PERCENT.
 7. ALL CONCRETE MEMBERS SHALL NOT BE LOADED UNTIL THE SPECIFIED CONCRETE STRENGTH HAS BEEN ATTAINED.
 8. CONCRETE SHALL BE TESTED IN ACCORDANCE WITH ACI 301 AND THE SPECIFICATIONS FOR COMPLIANCE WITH THE CONTRACT DOCUMENTS. AT A MINIMUM CONCRETE SPECIMENS SHALL BE TAKEN FOR EVERY 100 YARDS OR PORTION THEREOF FOR EACH MIX DESIGN PLACED IN A DAY. ALL CONCRETE TEST REPORTS SHALL BE AVAILABLE ON SITE FOR INSPECTION.
 9. ALL EXPOSED CORNERS OF CONCRETE SHALL HAVE A 0.5" CHAMFER OR RADIUS.
 10. CONCRETE SHALL RECEIVE THE FOLLOWING FINISHES:
 - EXTERIOR SLABS: BROOM FINISH IN DIRECTION OF SLOPE
 - ALL OTHER CONCRETE: STEEL TROWEL FINISH
 11. MAINTAIN CONCRETE AFTER PLACEMENT WITH MINIMAL MOISTURE LOSS AT RELATIVELY CONSTANT TEMPERATURE FOR THE PERIOD NECESSARY FOR HYDRATION OF CEMENT AND HARDENING OF CONCRETE (NOT LESS THAN 7 DAYS). COMPLY WITH THE REQUIREMENTS OF ACI 308-STANDARD PRACTICE FOR CURING CONCRETE; AMERICAN CONCRETE INSTITUTE. A COMBINATION CURING AND SEALING COMPOUND SHALL BE APPLIED AFTER THE CONCRETE HAS BEEN FINISHED OR THE FORMS REMOVED. COMPOUND SHALL MEET THE REQUIREMENTS OF ASTM C1315.
- REINFORCEMENT:**
1. REINFORCING STEEL SHALL CONFORM TO ASTM A615, GRADE 60, UNLESS NOTED OTHERWISE.
 2. SPLICES SHALL BE CLASS B IN ACCORDANCE WITH ACI 318-05, UNLESS NOTED OTHERWISE. REINFORCEMENT SHALL BE SPLICED ONLY AT LOCATIONS SHOWN OR NOTED IN THE STRUCTURAL DOCUMENTS, EXCEPT REINFORCEMENT MARKED "CONTINUOUS" CAN BE SPLICED WITH CLASS "B" LAP SPLICE AT LOCATIONS DETERMINED BY CONTRACTOR. SPLICES IN OTHER LOCATIONS SHALL BE APPROVED IN WRITING BY THE STRUCTURAL ENGINEER.
 3. ADHESIVE FOR REINFORCING DOWELS IN EXISTING CONCRETE SHALL BE EITHER THE EPCON SYSTEM CERAMIC 6 EPOXY ADHESIVE SUPPLIED BY ITW RAMSET/RED HEAD OR THE HIT HY 150 INJECTION ADHESIVE SUPPLIED BY HILTI FASTENING SYSTEMS, OR APPROVED EQUAL. MINIMUM EMBEDMENT LENGTH SHALL BE 12 BAR DIAMETERS, UNLESS NOTED OTHERWISE.
 4. ALL DOWELS AND TERMINATING BARS SHALL HAVE A STANDARD 90 DEGREE HOOK.



KEY PLAN
SCALE: N.T.S

0	ISSUED FOR REVIEW	MM	CM/MM	04/05/21
REV. NO.	REVISION DESCRIPTION	APP'D.	DRN/CHKD	DATE
EXCEPT AS MAY BE OTHERWISE PROVIDED BY CONTRACT THESE DRAWINGS AND SPECIFICATIONS ARE THE PROPERTY OF JACKSON COUNTY GA AND ARE ISSUED IN STRICT CONFIDENCE. THEY SHALL NOT BE REPRODUCED, COPIED, OR USED WITHOUT WRITTEN PERMISSION BY JACKSON COUNTY GA.		NAME JACKSON COUNTY CORRECTIONAL INSTITUTION PROBATION DETENTION CENTER 265 I W DAVIS RD, JEFFERSON, GA 30549		
ENG Group, Inc. 3100 FIVE FORKS TRICKUM RD, STE 601 LILBURN, GA 30047 TEL: (770) 575-3537 FAX: (866) 531-2419 EMAIL: mitchm@eng-group.com		TITLE PARTIAL SITE & FLOOR PLAN - POWER - NEW		
DRAWN	CHECKED	APP'D.	SHEET	DRAWING NO.
CM	MM	MM		E-41
DATE	SCALE	END GROUP PROJECT NO.		REV.
04/05/21	AS NOTED	21103		0



1 **DETAIL - PROPOSED GENERATOR**
E-5.1 SCALE: N.T.S. (24-HRS DIESEL RESERVE FUEL TANK)

3/16" HIGH WHITE LETTERS, BLACK COLOR LABEL TO MATCH EXISTING, (MIN. 3/4" x 1-1/2" SIZE) x 3/32" THICK

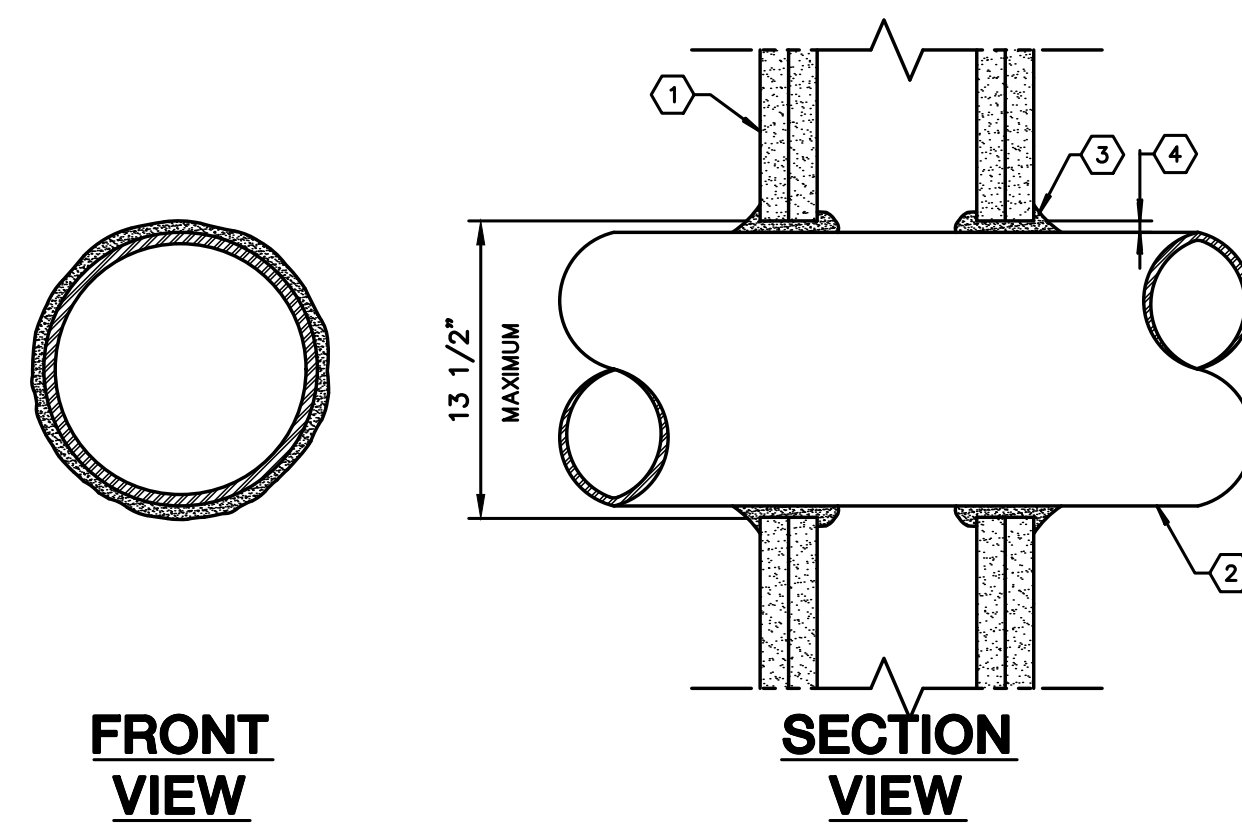
PNL "INV#1" FED FROM INV#1
250A AMPS,
120/208V-3Ø,4W

PROVIDE LABELS SIMILAR TO ABOVE FOR ALL DISTRIBUTION PANEL BOARDS, SWITCHBOARDS, EQUIPMENT DISCONNECTS, LIGHTING PANELS, ETC. MODIFY NAMES AS NEEDED PER ONE LINE DIAGRAM. (PROVIDE FOR ALL REVISED DISTRIBUTION SYSTEM PNLS + NEW PNLS)

4 **DETAIL - EQUIPMENT LABELING**
E-5.1 SCALE: N.T.S.



2 **DETAIL - OSHA 14"x10" ELECTRICAL ROOM SIGNS**
E-5.1 SCALE: N.T.S.

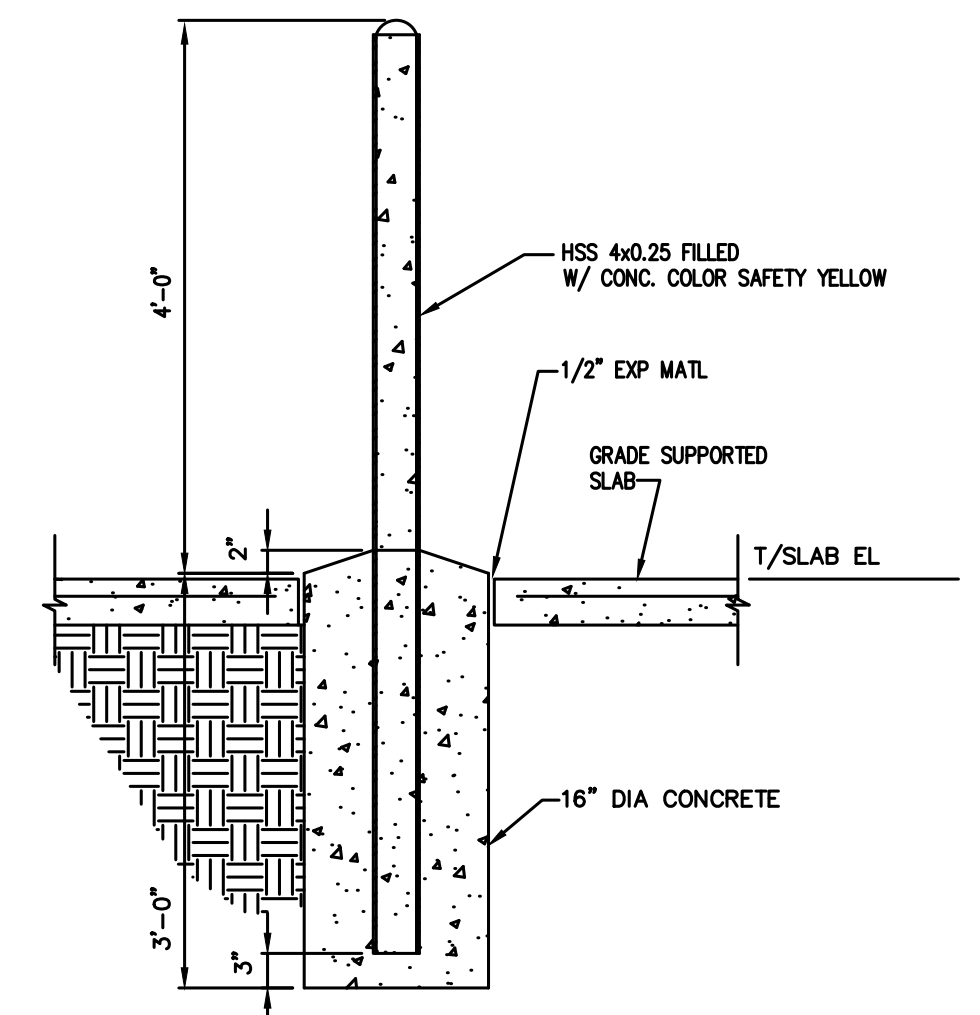


NOTES: (THIS DETAIL ONLY)

- 1 2 x 4 STEEL STUD WALLS WITH MINIMUM 1/3" THICK GYPSUM WALLBOARD; WALLBOARD TYPE, THICKNESS, NUMBER OF LAYERS, FASTER TYPE AND SHEET ORIENTATION SHALL BE AS SPECIFIED IN THE INDIVIDUAL V300 OR V400 SERIES DESIGN.
- 2 PENETRATING ITEM(S):
 *NOMINAL 12" DIAMETER (OR SMALLER) SCHEDULE TEN (OR HEAVIER) STEEL PIPE.
 *NOMINAL 12" DIAMETER (OR SMALLER) SERVICE WITH EIGHT (OR HEAVIER) CAST IRON SOIL PIPE.
 *NOMINAL 12" DIAMETER (OR SMALLER) CLASS FIFTY (OR HEAVIER) DUCTILE IRON PRESSURE PIPE.
 *NOMINAL 6" DIAMETER (OR SMALLER) STEEL CONDUIT.
 *NOMINAL 4" DIAMETER (OR SMALLER) EMT.
 *NOMINAL 6" DIAMETER (OR SMALLER) TYPE "L" OR (OR HEAVIER) COPPER TUBING.
 *NOMINAL 1" DIAMETER (OR SMALLER) FLEXIBLE STEEL CONDUIT.
- 3 CAULK INSTALLED TO COMPLETELY FILL ANNULAR SPACE BETWEEN PIPE OR CONDUIT AND GYPSUM WITH A MINIMUM OF 1/4" DIAMETER BEAD OF CAULK APPLIED TO PERIMETER OF PIPE OR CONDUIT.
- 4 ANNULAR SPACE AND FIRE RATING:

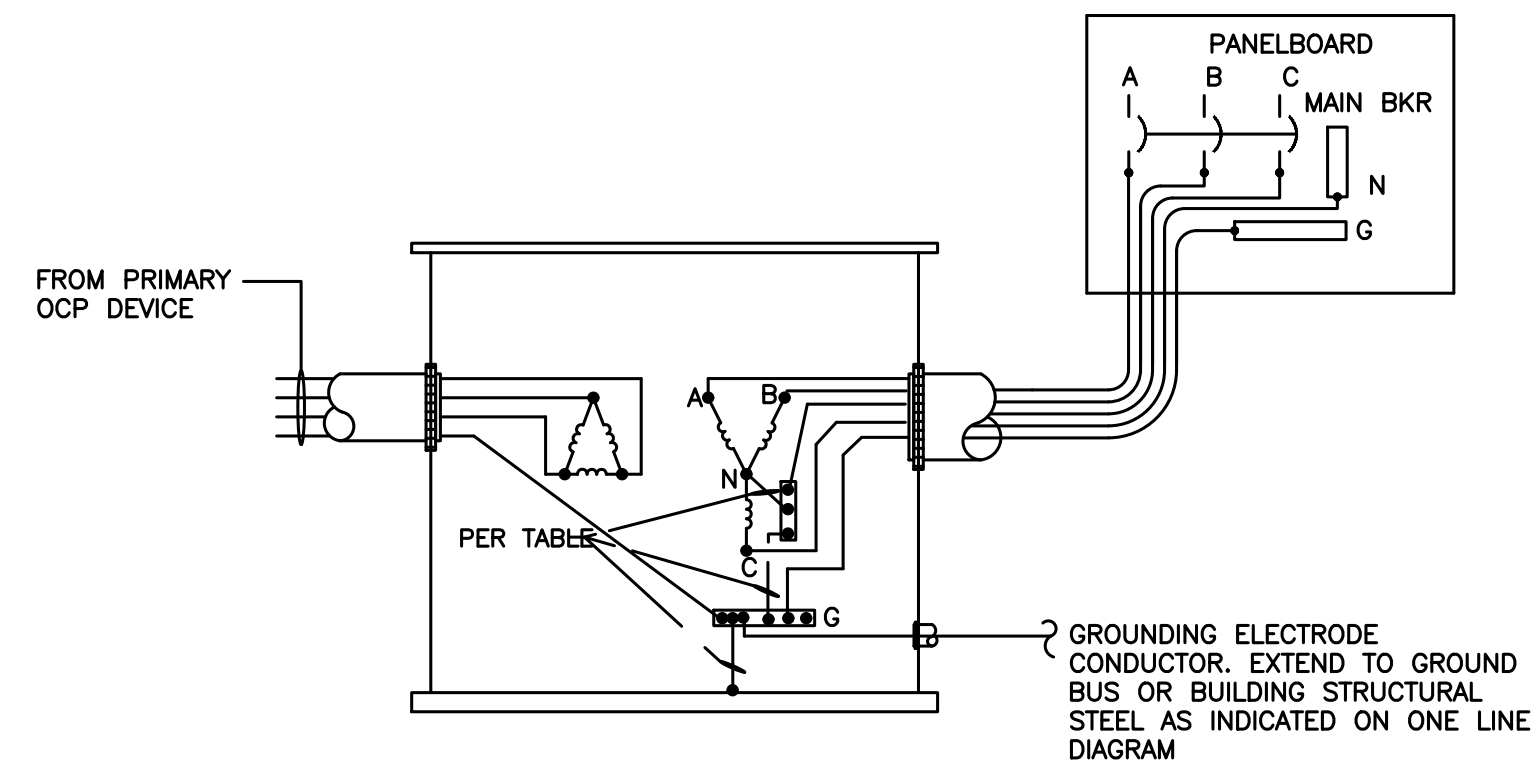
MAX. PIPE DIA.	ANNULAR SPACE	F-RATING (HR)	T-RATING (HR)
1"	0 TO 3/16"	1 OR 2	0+, 1 OR 2
1"	1/4" TO 1/2"	3 OR 4	3 OR 4
4"	0 TO 1/4"	1 OR 2	0
4"	0 TO 1 1/2"	1 OR 2	0
6"	1/4" TO 1/2"	3 OR 4	0
12"	3/16" TO 3/8"	1 OR 2	0

3 **PENETRATION DETAIL - UL# W-L-1001**
E-5.1 SCALE: N.T.S. 1-4 HOUR FIRE RATING



5 **DETAIL - TYPICAL BOLLARD**
E-5.1 SCALE: N.T.S.

0	ISSUED FOR REVIEW	MM	CM/MM	04/05/21
REV. NO.	REVISION DESCRIPTION	APP'D.	DRN/CHK	DATE
EXCEPT AS MAY BE OTHERWISE PROVIDED BY CONTRACT THESE DRAWINGS AND SPECIFICATIONS ARE THE PROPERTY OF JACKSON COUNTY GA AND ARE ISSUED IN STRICT CONFIDENCE. THEY SHALL NOT BE REPRODUCED, COPIED, OR USED WITHOUT WRITTEN PERMISSION BY JACKSON COUNTY GA.		NAME JACKSON COUNTY CORRECTIONAL INSTITUTION PROBATION DETENTION CENTER 265 I W DAVIS RD, JEFFERSON, GA 30549		
ENG Group, Inc. 3100 FIVE FORKS TRUCKUM RD, STE 601 LILBURN, GA 30047 TEL (770) 575-3537 FAX (866) 531-2419 EMAIL: mitchm@eng-group.com		TITLE DETAILS		
DRWN	CM	CHECKED	MM	APP'D.
DATE	04/05/21	SCALE	AS NOTED	END GROUP PROJECT NO.
				21103
SHEET				DRAWING NO.
				E-61
REV.				0



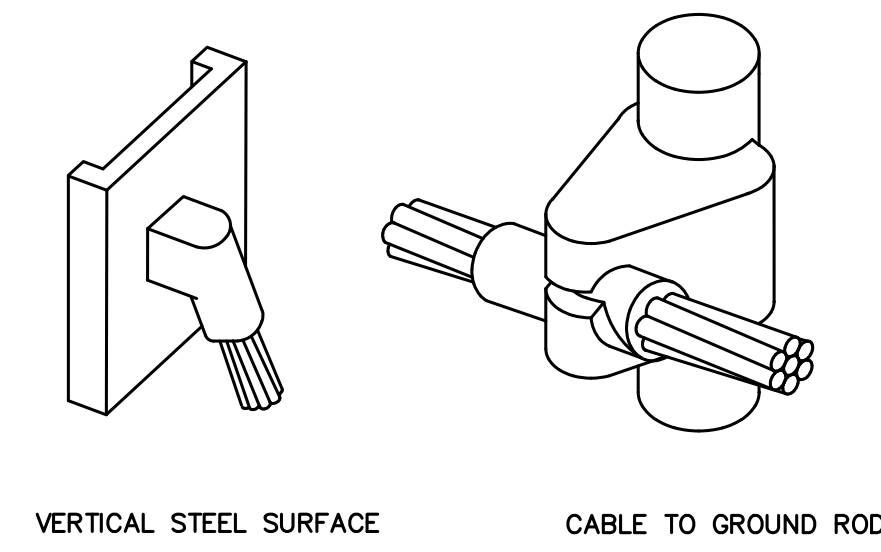
kVA	CONDUCTOR	CONDUIT SIZE-PVC
9	1#8	3/4" C
15	1#8	3/4" C
30	1#8	3/4" C
45	1#6	3/4" C
75	1#2	3/4" C
112.5	1#1/0	3/4" C
150	1#1/0	3/4" C
225	1#2/0	1" C
300	1#2/0	1" C
500	1#3/0	1" C

GROUNDING ELECTRODE CONDUCTOR SCHEDULE PER NEC TABLE 250-66

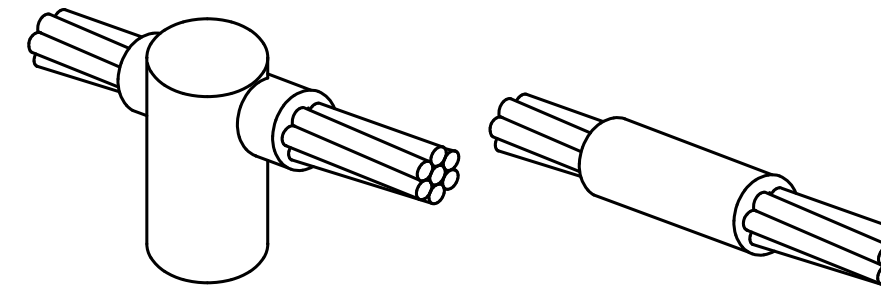
NOTES:

1. DETAIL TYPICAL FOR 3-PHASE TRANSFORMERS WITH 480 VOLT PRIMARY AND 208/120 SECONDARY VOLTAGES.
2. BONDING JUMPER AND GROUNDING ELECTRODE CONDUCTOR SHALL BE SIZED PER NEC 250-66.
3. BONDING JUMPER AND REQUIRED GROUNDING ELECTRODE CONDUCTOR SHALL BE SAME SIZE.

1 DETAIL - TRANSFORMER GROUNDING
E-5.2 SCALE: N.T.S

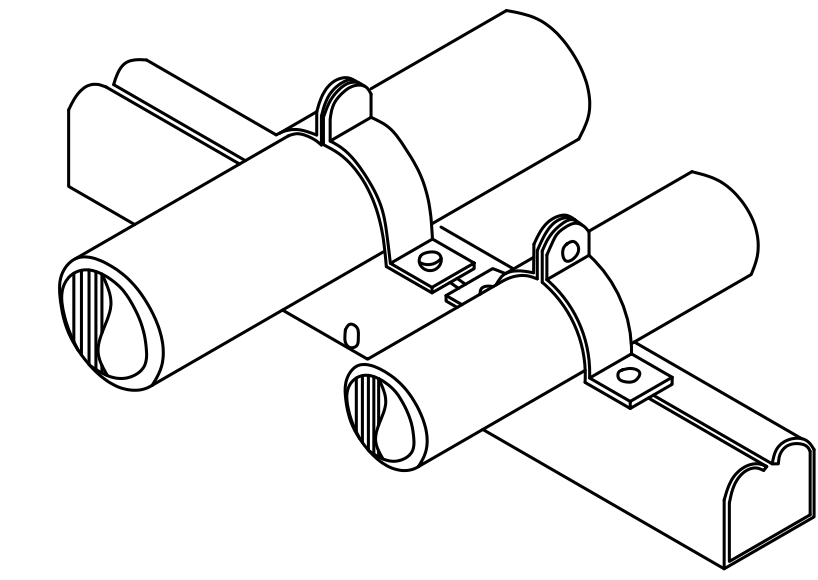


VERTICAL STEEL SURFACE CABLE TO GROUND ROD



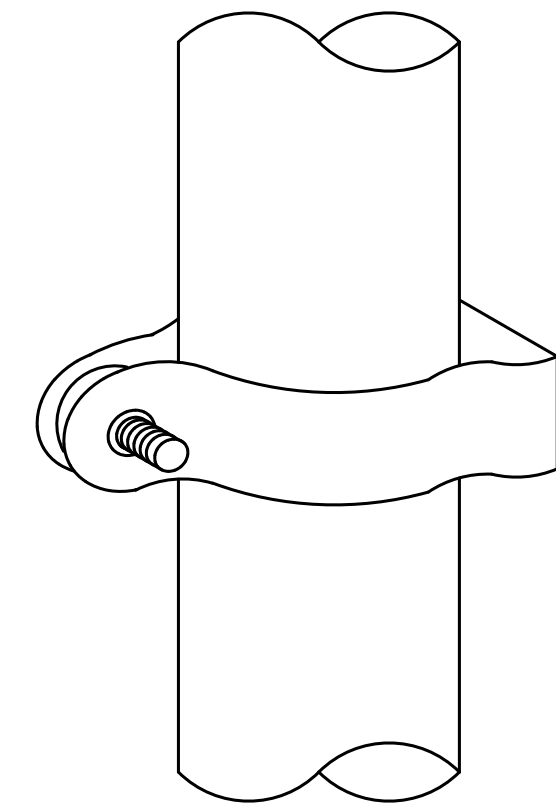
CABLE TO GROUND ROD HORIZONTAL SPLICE

3 DETAILS - CADWELD
E-5.2 SCALE: N.T.S



5 DETAIL - CONDUIT SUPPORT WALL OR FLOOR
E-5.2 SCALE: N.T.S

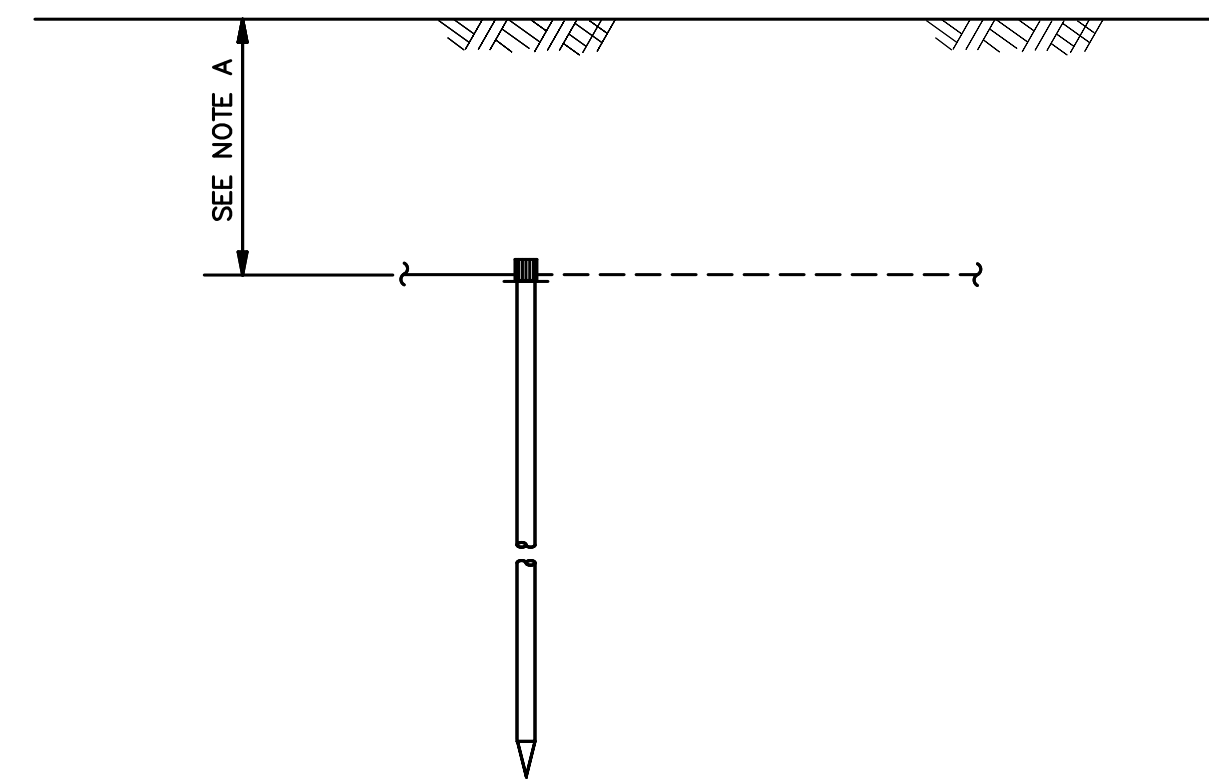
HOT-DIP GALVANIZED FASTENERS, CLAMPS AND UNISTRUT SHALL BE USED FOR EXTERIOR ITEMS (ALL TRADES).



NOTES:

- A. THIS DETAIL APPLIES FOR ALL CONDITIONS WHERE GROUNDING CONDUCTOR IS ROUTED EXPOSED, IE NOT UNDERGROUND OR SUPPORTED BY CABLE LADDER.
- B. NO CONTINUOUS METAL ENCASEMENTS ARE ALLOWED AROUND GROUNDING CONDUCTORS OR CONDUITS.
- C. PAINT PVC CONDUIT TO MATCH WALL COLOR ON VERTICAL RUNS.

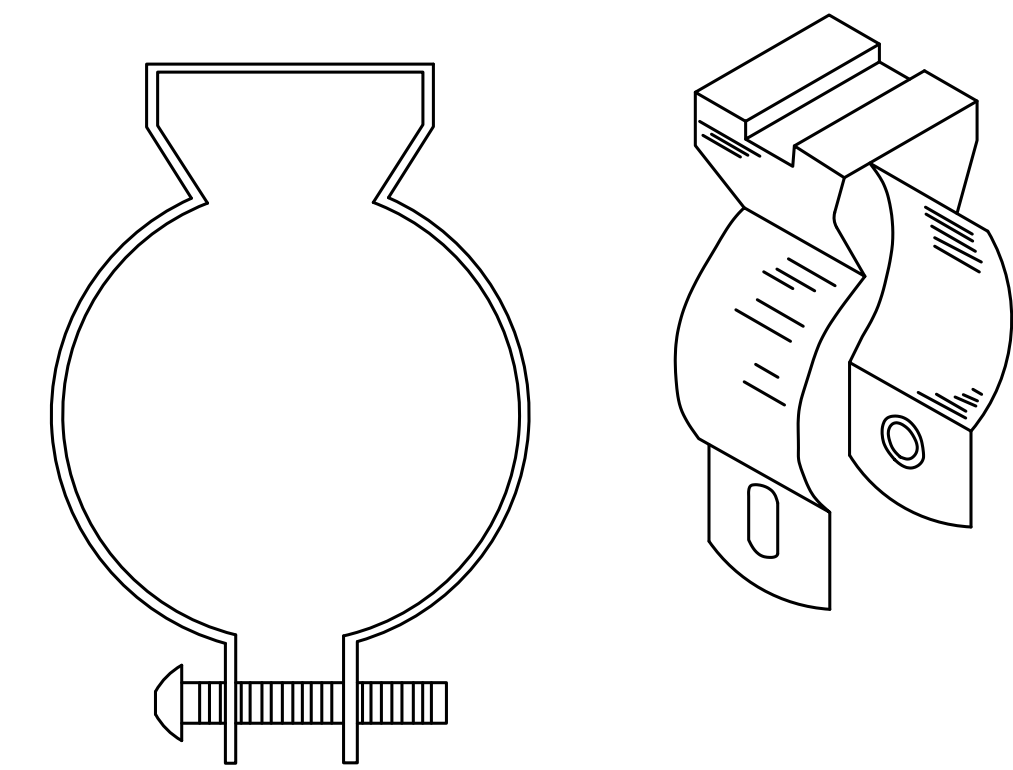
2 GROUNDING CONDUCTOR WALL MOUNTING DETAIL
E-5.2 SCALE: N.T.S



NOTE:

- A. GROUND LINE TO BE A MIN. OF 30" OR BELOW FROST LINE, WHICHEVER IS DEEPER.
- B. GROUND ROD SHALL BE DRIVEN VERTICALLY, NOT TO EXCEED 45 DEGREES FROM THE VERTICAL.
- C. THE MINIMUM INSIDE BEND RADIUS IS:
- 6 INCHES FOR CONDUCTORS UP TO #6 GAUGE.
- 12 INCHES FOR CONDUCTORS #6 TO #4/0 GAUGE.
- 24 INCHES FOR CONDUCTORS #4/0 GAUGE AND UP.

4 GROUNDING ROD DETAIL
E-5.2 SCALE: N.T.S



6 DETAIL - CONDUIT HANGER
E-5.2 SCALE: N.T.S

REV. NO.	REVISION DESCRIPTION	APP'D.	CHK'D.	DATE
0	ISSUED FOR REVIEW	MM	CM/MM	04/05/21
EXCEPT AS MAY BE OTHERWISE PROVIDED BY CONTRACT THESE DRAWINGS AND SPECIFICATIONS ARE THE PROPERTY OF JACKSON COUNTY GA AND ARE ISSUED IN STRICT CONFIDENCE. THEY SHALL NOT BE REPRODUCED, COPIED, OR USED WITHOUT WRITTEN PERMISSION BY JACKSON COUNTY GA.		NAME JACKSON COUNTY CORRECTIONAL INSTITUTION PROBATION DETENTION CENTER 265 I W DAVIS RD, JEFFERSON, GA 30549		
ENG Group, Inc. 3100 FIVE FORKS TRICKUM RD, STE 601 LILBURN, GA 30047 TEL (770) 575-3537 FAX (866) 531-2419 EMAIL: mitchm@eng-group.com		TITLE DETAILS		
DRAWN CM	CHECKED MM	APP'D. MM	SHEET E-5.2	REV. 0
DATE 04/05/21	SCALE AS NOTED	ENG GROUP PROJECT NO. 21103		

GENERAL NOTES:

- ALL CONTRACTORS SHALL COMPLY WITH ALL REQUIREMENTS.
- ALL CONTRACTORS SHALL REVIEW OTHER TRADES DWGS FOR COORDINATION AND ADDITIONAL REQUIREMENTS:
- PROVIDE ALL LABOR, TOOLS, AND MATERIAL REQUIRED FOR A COMPLETE AND FULLY OPERATIONAL INSTALLATION, AS DESCRIBED ON THE DRAWINGS.
- THE WORK SHALL BE INSTALLED IN A NEAT AND WORKMANLIKE MANNER.
- COMPLY WITH LOCAL CODES ENFORCED BY THE LOCAL INSPECTION AUTHORITY.
- COMPLY WITH THE EDITION OF THE NATIONAL ELECTRICAL CODE BEING ENFORCED FOR THIS PROJECT BY THE LOCAL INSPECTION AUTHORITY.
- COMPLY WITH ALL APPLICABLE LAWS AND ORDINANCES.
- COMPLY WITH THE RULES, REGULATIONS AND INSTALLATION REQUIREMENTS OF THE ELECTRIC UTILITY COMPANY SERVING THE PROJECT.
- COMPLY WITH OWNER RULES AND REGULATIONS. COMPLY WITH LATEST OWNERS STANDARDS.
- ALL MATERIAL SHALL BE NEW, AND SHALL COMPLY WITH THE INDICATED STANDARDS.
- ALL MATERIAL SHALL BE U/L LABELED OR U/L LISTED, EXCEPT WHERE THE MATERIAL IS OF A TYPE NOT INCLUDED IN THE U/L LISTING SERVICE, IN WHICH CASE THE MATERIAL SHALL COMPLY WITH OTHER APPLICABLE INDUSTRY STANDARDS AND THE CONTRACTOR SHALL PROVIDE ANY EXAMINATIONS OR CERTIFICATIONS REQUIRED BY THE LOCAL INSPECTION AUTHORITY IN LIEU OF U/L LISTING.
- ALL MATERIAL SHALL BE OF A SUITABLE TYPE AND RATING FOR THE INTENDED USE, AND SHALL BE INSTALLED IN CONFORMANCE WITH THE INSTRUCTIONS AND RECOMMENDATIONS OF THE MANUFACTURER.
- THE DRAWINGS ARE SCHEMATIC IN NATURE AND DO NOT SHOW ALL OF THE REQUIRED DETAILS OF THE WORK. ALL MATERIALS CUSTOMARILY CONSIDERED TO BE A PART OF THE WORK AND REQUIRED FOR A COMPLETE AND OPERATIONAL INSTALLATION SHALL BE PROVIDED WITHOUT ADDITIONAL COST TO THE OWNER.
- EXISTING INSTALLATION SHALL REMAIN AS-INSTALLED AND IN OPERATION EXCEPT WHERE OTHERWISE REQUIRED BY INSTALLATION OF NEW WORK. GIVE WRITTEN NOTICE OF ANY UNFORESEEN EXISTING CONDITIONS, WHICH MAY AFFECT THE WORK. WORK INVOLVING EXISTING SYSTEMS OR EXISTING SPACES SHALL BE ACCOMPLISHED WITH THE MINIMUM INCONVENIENCE TO THE OWNER, AND SHALL BE DONE IN A MANNER AND TIME APPROVED BY THE OWNER. NO INTERRUPTIONS SHALL BE ALLOWED FOR THIS PROJECT.
- FIELD VERIFY ALL EQUIPMENT CONNECTIONS WITH EXISTING EQUIPMENT SCHEDULED TO BE RELOCATED FOR FINAL CONNECTION REQUIREMENTS. CONTRACTOR SHALL BE RESPONSIBLE FOR COORDINATION OF WORK WITH EXISTING AND NEW EQUIPMENT.
- DEVIATIONS FROM THE DRAWINGS REQUIRED TO COMPLY WITH THE LATEST CODES, LATEST LANDLORD AND OWNERS STANDARDS, TO CONFORM TO SPACE CONDITIONS AND TO PROVIDE THE REQUIRED OPERATION, SERVICE, OR MAINTENANCE ACCESSIBILITY SHALL BE MADE AT NO ADDITIONAL COST TO THE OWNER.
- REFER TO CUT SHEETS, AND OWNER'S FINAL EQUIPMENT ORDER INFORMATION FOR ROUGH-IN HEIGHTS AND DIMENSIONS.
- REFER TO DRAWINGS, CUT SHEETS, AND OWNER'S FINAL EQUIPMENT ORDER INFORMATION FOR FINAL CONNECTION REQUIREMENTS TO OWNERS EQUIPMENT. CONTRACTOR SHALL BE RESPONSIBLE FOR COORDINATION WITH FINAL EQUIPMENT.
- SITE SURVEY AND FIELD-ENCOUNTERED OBSTACLES. THE CONTRACTOR SHALL CONDUCT A THOROUGH SITE INSPECTION AND SHALL FIELD VERIFY CONDITIONS PRIOR TO BID SUBMITTAL. THE CONTRACTOR SHALL ASSURE THERE IS ADEQUATE ACCESS AND DELIVERY-PATH CLEARANCE FOR ALL REQUIRED EQUIPMENT, MATERIALS, PERSONNEL, AND TOOLS, AND SHALL NOTIFY THE OWNER AND ENGINEER OF ANY DISCREPANCIES. NEITHER THE ENGINEER NOR OWNER ARE GUARANTEEING THE ACCURACY OF THE INFORMATION DEPICTED IN THESE DOCUMENTS, AND THERE ARE NO IMPLIED WARRANTIES ASSOCIATED WITH THESE DOCUMENTS. THE CONTRACTOR SHALL ADVISE THE ENGINEER OF ANY DISCREPANCIES PRIOR TO THE BID. THE CONTRACTOR SHALL BE RESPONSIBLE FOR ANY REQUIRED ALTERATION RESULTING FROM FAILURE TO ADEQUATELY SURVEY FIELD CONDITIONS.
- SCALE OF DRAWINGS - MEASUREMENTS AND/OR LOCATIONS SHALL NOT BE SCALED FROM THE CONSTRUCTION DRAWINGS. CONTRACTOR SHALL FIELD VERIFY ALL DIMENSIONS.
- CONTRACTOR TO BE RESPONSIBLE FOR ALL PIPING, CONDUIT AND WIRING ROUTING. ROUTING SHALL BE APPROVED BY THE OWNER.
- ALL CKTS SHALL BE MEGGER TESTED. MEGGER TEST OF ALL FEEDERS SHALL BE ACCOMPLISHED BEFORE ENERGIZING CIRCUITS. TEST SHALL BE PHASE TO PHASE, PHASE TO NEUTRAL AND PHASE TO GROUND. SUBMIT A WRITTEN TABULATION OF THE RESULTS OF EACH TEST TO THE ENGINEER FOR REVIEW. REPLACE ANY CABLE INSTALLED WITH INSULATION RESISTANCE OF LESS THAN ACCEPTED PUBLISHED INDUSTRY STANDARDS. REPLACE CONDUCTORS WITHOUT ADDITIONAL COST TO THE OWNER WHERE DETERMINED NOT ACCEPTABLE BY MEGGER TESTING.
- INSTALLED WORK, SYSTEMS AND EQUIPMENT SHALL BE GUARANTEED FOR A MINIMUM OF ONE YEAR FOLLOWING OWNER ACCEPTANCE.
- CLEANING - REMOVE DEBRIS DAILY. LEAVE SPACE CLEAN AT THE END OF EACH WORKING DAY.
- OWNER FACILITY HAS NO INTERIOR SPACE FOR STORAGE OF LARGE EQUIPMENT DURING THE PERFORMANCE OF THIS PROJECT. IT IS THE CONTRACTOR'S RESPONSIBILITY TO PROTECT THE BLDGS WHEN MOVING EQUIPMENT IN AND OUT. THE CONTRACTOR WILL BE RESPONSIBLE FOR ANY REPAIRS OF ANY DAMAGE THAT RESULTS FROM THIS ACTION. IT WILL BE THE CONTRACTOR'S RESPONSIBILITY TO TRANSPORT THE NEW EQUIPMENT TO THE FACILITY AND TRANSPORT THE DEMO'D EQUIPMENT. DEMO EQUIPMENT SHALL BE DISCARDED.
- RESTORE TO ORIGINAL CONDITION OR REPLACE ANY WORK AND MATERIALS DAMAGED DURING THIS PROJECT.
- THIS IS A TRAFFIC CARRYING, REVENUE PRODUCING FACILITY, WHICH MUST REMAIN FULLY FUNCTIONAL THROUGHOUT THE DURATION OF THIS PROJECT. THEREFORE, EXTREME CARE MUST BE EXERCISED BY ALL WORKERS WHILE IN THE COMMUNICATIONS EQUIPMENT AREA & POWER ROOM, AND ALL EQUIPMENT MUST BE PROTECTED FROM DUST AND PHYSICAL DAMAGE AT ALL TIMES.
- PREPARE AND SUBMIT A DETAILED SCHEDULE AND DESCRIPTION OF THE PROCEDURE TO BE FOLLOWED IN ACCOMPLISHING THE WORK FOR PRIOR APPROVAL BY THE OWNER. SUBMIT THE PROPOSED SCHEDULE AT LEAST (10) BUSINESS DAYS PRIOR TO ACCOMPLISHING THE WORK.
- PROTECT BLDGS AND EQUIPMENT AGAINST DAMAGE. RECOMMEND TAKING PICTURES BEFORE/AFTER AND HAVING MEETING WITH OWNER TO INSPECT THE SPACE BEFORE/AFTER WORK. IF EQUIPMENT, BLDGS, WALLS ARE DAMAGED, SHALL BE FIXED AS REQUIRED BY PROJECT MANAGER AT NO ADDITIONAL COST TO OWNER.
- CONTRACTOR SHALL PROTECT WALLS, EQUIPMENT, BLDGS AND ALL OWNER BUSINESS OR BUILDING PROPERTY FROM DAMAGE. IF DAMAGE OCCURS DURING CONSTRUCTION, CONTRACTOR SHALL BE RESPONSIBLE FOR RESTORING PROPERTY TO THE PREVIOUS CONDITION AS DETERMINED BY OWNER AND/OR THE BUILDING MANAGEMENT AT NO ADDITIONAL COST (TYPICAL).
- CONTRACTOR SHALL PAY ALL PERMIT FEES, ALL REQUIRED SPECIAL INSPECTIONS FEES (ANY ADDITIONAL REQUIRED FEES), ANY NEGOTIATION WITH THE CITY AND SHALL APPLY FOR PERMIT.
- FOR EXTERIOR HOT-DIP GALVANIZED FASTENERS AND UNISTRUT SHALL BE USED.
- INSTALL ARC FLASH LABELS FOR ALL EXISTING ELECTRICAL EQUIPMENT PER ENG GROUP STUDY. PROVIDE FRAME FOR ENG GROUP PROVIDE ONE LINE DIAGRAM AND INSTALL ON WALL IN GENERATOR ROOM AND ADJACENT TO MAIN SWGR.
- PROVIDE SPILL KIT PER OWNER REQUIREMENTS - NEW PIG, 30 GALLON OVERPACK SALVAGE DRUM.
- PROVIDE LAMINATED ONE LINE DIAGRAM (PDF FURNISHED BY ENG GROUP, PRINTED, LAMINATED & INSTALLED BY CONTRACTOR ON WALL ADJACENT TO OR ON THE ATS SIDE PANEL).
- QUALITY - CONTRACTOR SHALL PERFORM ALL WORK AND INSTALL ALL COMPONENTS IN A PROFESSIONAL AND WORKMANLIKE MANNER. ALL FINISH WORK TO BE TRUE, LEVEL, AND PLUMB. ALL JOINTS TO BE TIGHT AND CLEAN.
- CONTRACTOR SHALL ASSUME RESPONSIBILITY FOR INCORPORATING IN THE WORK ANYTHING WHICH, THOUGH NOT MENTIONED IN THE DWGS, SPECIFICATIONS, OR DURING SITE SURVEYS THAT WOULD BE NECESSARY TO PERFORM TO WORK AND TO PROVIDE FULL FUNCTIONING SYSTEM.
- AS BUILT, RED LINE DRAWINGS - CONTRACTOR SHALL UPDATE "RED-LINE" CONSTRUCTION DOCUMENTS ON A DAILY BASIS. THE RED-LINE DOCUMENTS SHALL BE REVIEWED WEEKLY WITH OWNER REPRESENTATIVE. THE CONTRACTOR SHALL PROVIDE THE RED-LINE DOCUMENTS TO OWNER WITHIN SEVEN (7) DAYS FOLLOWING SUBSTANTIAL COMPLETION OF THE PROJECT. THE RED-LINE DOCUMENTS ARE THE PROPERTY OF OWNER AND SHALL NOT BE REMOVED FROM THE PROJECT SITE WITHOUT APPROVAL OF THE OWNER REPRESENTATIVE. THESE DOCUMENTS SHALL BE KEPT IN A SAFE LOCATION.
- WARRANTY - CONTRACTOR TO PROVIDE A ONE YEAR WARRANTY FOR ALL WORK, THE PERIOD TO BEGIN WITH FINAL ACCEPTANCE BY OWNER.

DEMOLITION NOTES:

- THE DRAWINGS SHOW THE GENERAL EXTENT OF THE DEMOLITION REQUIRED. THE DRAWINGS DO NOT NECESSARILY SHOW EVERYTHING TO BE REMOVED IN PREPARATION FOR NEW CONSTRUCTION.
- CONTRACTOR TO VERIFY EXACT CONDITIONS AND EXTENT OF EXISTING CONSTRUCTION TO BE REMOVED DURING SITE INSPECTION.
- ALL DEMOLITION/CONSTRUCTION IS TO BE DONE IN AN ORDERLY MANNER.
- DURING THE PROCESS OF DEMOLITION, CONTRACTOR SHALL MAINTAIN ACCESS TO ALL EXITS AND RATED CORRIDORS AS REQUIRED BY CODE FOR EMERGENCY EXITING.
- ALL MEASURES NECESSARY TO ASSURE SAFE DEMOLITION OF THE AREAS INDICATED ARE THE SOLE RESPONSIBILITY OF THE CONTRACTOR.
- CONTRACTOR IS RESPONSIBLE FOR INFORMING THE OWNER OF ANY HAZARDOUS MATERIAL ENCOUNTERED DURING DEMOLITION AND/OR CONSTRUCTION.
- CONTRACTOR SHALL PROTECT THE EXISTING TO REMAIN OWNER'S PROPERTY.
- CONTRACTOR SHALL REPAIR ALL DAMAGE DUE TO DEMOLITION/CONSTRUCTION WORK.
- CONTRACTOR SHALL TAKE MEASURES TO PROTECT EXISTING FIXTURES/EQUIPMENT TO BE RELOCATED.
- COORDINATE WITH OTHER TRADES AS REQUIRED FOR THE DEMOLITION OF OTHER TRADES WORK. CUT OFF ALL IN FLOOR CONDUITS, GRIND SMOOTH WITH FLOOR AND PATCH. CONTRACTOR SHALL DENOTE ALL DEMOLISHED CIRCUITS ON EXISTING PANEL DIRECTORIES AND NOTE ALL SPARE BREAKERS.
- CONTRACTOR SHALL MAINTAIN THE INTEGRITY AND CONTINUITY OF ALL EXISTING FEEDERS AND BRANCH CIRCUITS FEEDING AREAS OF THE BUILDING THAT ARE NOT IN THIS SCOPE OF WORK AS DEFINED BY THE DRAWINGS.
- COORDINATE EXTENT OF DEMOLITION WORK WITH DRAWINGS PRIOR TO COMMENCING ANY DEMOLITION WORK.
- ALL WORK IN HOT PANELS SHALL TAKE PLACE DURING MAINTENANCE WINDOWS.
- CONTRACTOR SHALL FIELD VERIFY ALL EXISTING CONDITIONS. NOTIFY DESIGN TEAM OF ANY CONFLICTS WITH EXISTING UTILITIES, DIMENSIONS OR MISCELLANEOUS ITEMS.
- ALL ASSOCIATED WORK POTENTIALLY AFFECTING EXISTING TRAFFIC CARRYING REVENUE EQUIPMENT SHALL BE PERFORMED DURING AN OWNER APPROVED OPEN WINDOW, BETWEEN 12AM TO 6AM.
- PATCH, REPAIR OR REPLACE ANY FINISHES THAT BECOME DAMAGED OR AREA AFFECTED BY CONSTRUCTION ACTIVITIES. ALL FINISHES IN THE AREA OF WORK SHALL BE IN LIKE NEW CONDITION AT THE COMPLETION OF THE CONSTRUCTION WORK.
- ALL EXISTING BUILDING CODE EGRESS REQUIREMENTS, FIRE CODE REQUIREMENTS AND LIFE SAFETY REQUIREMENTS SHALL BE MAINTAINED AND REMAIN UNCHANGED DURING AND FOLLOWING CONSTRUCTION ACTIVITIES. NO CHANGE IN BUILDING CONSTRUCTION TYPE OR OCCUPANCY IS ANTICIPATED.
- COORDINATE ALL GENERAL WORK AND REQUIREMENTS WITH MECHANICAL, PLUMBING AND ELECTRICAL TRADES.
- DURING ANY DUST CAUSING CONSTRUCTION ACTIVITY, PROVIDE HEPA FILTRATION VACUUMING AND WET MOP CLEANING.
- TEST ALL ALARMS AND PROVIDE WRITTEN REPORT TO THE OWNER.
- FIELD VERIFY EXACT LOCATION OF ALL EX. BURIED UTILITIES AND EQUIPMENT PRIOR TO ANY EXCAVATING FOR NEW WORK. HAND EXCAVATE AROUND EX. UTILITIES AND AVOID DAMAGING OR INTERRUPTION OF SERVICES.
- CONTRACTOR SHALL CONFIRM THAT UTILITIES LOCATE SERVICES HAVE BEEN COMPLETED BEFORE ANY EXCAVATION.
- PROVIDE ASPHALT + CONCRETE TO MATCH EXISTING GRADE ELEVATION AROUND ALL NEW EQUIPMENT AND CONCRETE PADS.
- CONTRACTOR SHALL TAKE ALL MEASURES NECESSARY TO AVOID DAMAGING LANDSCAPE AND LAWN AREAS. ALL LANDSCAPE AND LAWN AREAS DISTURBED BY CONSTRUCTION SHALL BE RESTORED TO ORIGINAL CONDITION AND AS APPROVED BY THE OWNER.
- CONTRACTOR SHALL PROVIDE FUEL FOR NEW TANK. TOP OFF OF THE NEW FUEL TANK, AFTER ALL TESTING IS COMPLETE.
- THE BACKFILL MATERIAL SHALL BE PLACED IN LOOSE 6 INCH LIFTS AND COMPACTED TO AT LEAST 95% OF ITS MAXIMUM DENSITY WITH A MOISTURE CONTENT THAT IS NO MORE THAN 1% GREATER THAN OR 2% LESS THAN THE OPTIMUM MOISTURE AS DETERMINED IN ACCORDANCE WITH CURRENT ASTM DESIGNATION D-1557 (MODIFIED PROCTOR). COMPACTION TEST RESULTS CONFIRMING COMPLIANCE SHALL BE PROVIDED TO OWNER.
- PROVIDE REQUIRED PERMITTING, ASSOCIATED FEES, ANY SPECIAL INSPECTION FEES AND HANDLE REQUIRED NEGOTIATION WITH THE CITY/COUNTY/AUTHORITY HAVING JURISDICTION (AHJ).
- PREPARE AND SUBMIT A DETAILED SCHEDULE AND DESCRIPTION OF THE PROCEDURE TO BE FOLLOWED IN ACCOMPLISHING THE WORK FOR PRIOR APPROVAL BY THE OWNER. SUBMIT THE PROPOSED SCHEDULE AT LEAST (10) BUSINESS DAYS PRIOR TO ACCOMPLISHING THE WORK.
- THE SCOPE OF SERVICES OF ENG GROUP AND ITS CONSULTANTS DO NOT INCLUDE ANY SERVICES OR INFORMATION RELATED TO ASBESTOS OR HAZARDOUS OR TOXIC MATERIALS. IN THE EVENT THAT ASBESTOS OR HAZARDOUS OR TOXIC MATERIALS ARE ENCOUNTERED ON THIS JOBSITE, OR SHOULD IT BECOME KNOWN IN ANY WAY THAT SUCH MATERIALS MAY BE PRESENT AT THE JOBSITE OR ANY ADJACENT AREAS, PERFORMANCE OF SERVICES ON THE PROJECT SHALL BE SUSPENDED AND PROVIDE APPROPRIATE SPECIALIST CONSULTANTS AND CONTRACTORS TO IDENTIFY, ABATE AND/OR REMOVE THE SUBJECT MATERIALS.
- PROTECT EXISTING BLDG FLOORS WITH PLYWOOD/MASONITE BOARD AGAINST DAMAGE WHEN REMOVING OR BRINGING NEW UNITS INSIDE THE SPACE. RECOMMEND TAKING PICTURES BEFORE/AFTER AND HAVING MEETING WITH OWNER TO INSPECT FLOORS BEFORE/AFTER INSTALLING NEW EQUIPMENT. IF THE FLOOR OR WALLS ARE DAMAGED, SHALL BE FIXED AS REQUIRED AT NO ADDITIONAL COST TO OWNER.
- TRASH REMOVAL:
 - CANNOT USE EXISTING DUMPSTER ONSITE FOR TRASH REMOVAL.
 - OWNER CAN ARRANGE A SPACE FOR CONTRACTOR TO PLACE DUMPSTER ONSITE FOR PROJECT, OTHERWISE ALL TRASH WILL NEED TO BE HAULED OFF.
 - CLEAN WORK AREA EACH DAY.

GEN + ATS ALARMS FOR MONITORING

- | NEW GENERATOR |
|----------------------------|
| 1. START / RUN |
| 2. NOT IN AUTO |
| 3. ON LOAD |
| 4. WEAK / LOW BATTERY |
| 5. BATTERY CHARGER TROUBLE |
| 6. BKR OPEN / TRIPPED |
| 7. GEN MAJOR ALARM / FAIL |
| 8. FUEL LEAK |
| 9. LOW FUEL |
| 10. SPARE |
| NEW ATS |
| 1. ATS ON GEN |
| 2. LOSS OF UTILITY |
| 3. FAIL TO TRANSFER |
| 4. SPARE |

NOTES:

- ASSIST THE OWNER WITH ALARMS TESTING. PROVIDE TEST REPORT TO THE CLOSE-OUT DOCUMENTS.

REV. NO.	REVISION DESCRIPTION	APP'D.	DATE
0	ISSUED FOR REVIEW	MM	04/05/21
EXCEPT AS MAY BE OTHERWISE PROVIDED BY CONTRACT THESE DRAWINGS AND SPECIFICATIONS ARE THE PROPERTY OF JACKSON COUNTY GA AND ARE ISSUED IN STRICT CONFIDENCE. THEY SHALL NOT BE REPRODUCED, COPIED, OR USED WITHOUT WRITTEN PERMISSION BY JACKSON COUNTY GA.		NAME JACKSON COUNTY CORRECTIONAL INSTITUTION PROBATION DETENTION CENTER 265 I W DAVIS RD, JEFFERSON, GA 30549	
ENG Group, Inc. 3100 FIVE FORKS TRICKUM RD, STE 601 LILBURN, GA 30047 TEL (770) 575-3537 FAX (866) 531-2419 EMAIL: mitchm@eng-group.com		TITLE GENERAL & DEMOLITION NOTES	
DRAWN CM	CHECKED MM	APP'D. MM	SHEET DRAWING NO. E-54
DATE 04/05/21	SCALE AS NOTED	ENG GROUP PROJECT NO. 21103	REV. 0