

**ADDENDUM 1 :**

<p><b>BID NUMBER: 0069</b> <b>BID TITLE: FOOD SERVICE EQUIPMENT</b></p>
---

Addendum # 1 for Union County Schools Combination Oven and Dishwasher with accessories

**PLEASE NOTE ON YOUR BID DOCUMENTS THAT YOU HAVE RECEIVED THIS ADDENDUM AND UNDERSTAND EVERYTHING INCLUDED WITHIN IT.**

September 26, 2019

**Union County High School**

- Confirmed that the voltage and phase are 480/3
- Please price this unit to be installed as quickly as possible as this an emergency purchase.

**Sharp's Chapel**

- Confirmed that the voltage for the convection oven is 208/3
- Confirmed that a single point connection of 208/3 will be supplied by the school maintenance department to the point specified by Hobart Sales and Service for dishwasher.
- Confirmation the Hobart Sales and Service can provide the disconnection and connection for the convection oven at this location.
- The soiled dishtable will have the following added as shown and stated:
  - Provide a trash chute and access below for trash can to be located under the table per the detail.
  - Provide provisions for window-see detail
  - Provide a new pass thru shelf in window-see detail

Enclosed sides  
to cover wood only  $1\frac{1}{2}$ "  
back-to-back wall

WINDOW DETAIL

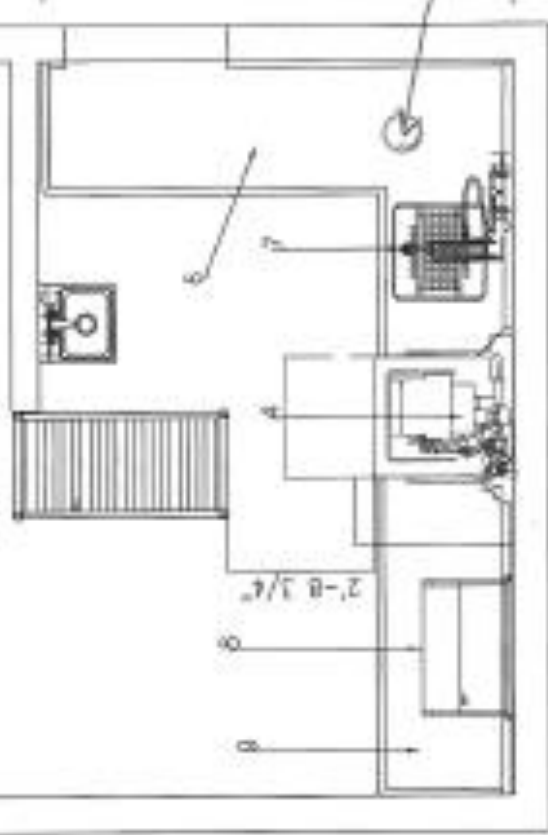
$1\frac{1}{2}$ "  
table  
 $15^\circ$   
 $1\frac{1}{2}$ "  
 $10"$   
 $2\frac{1}{4}"$   
 $1\frac{1}{2}"$   
Shelf  $29\frac{5}{8}"$  wide  
18 GA

ADD  
Shelf

$9"$   
 $36.5"$

$9'9"$

NEW  
TRASH  
CHUTE WITH  
OPEN SPACE  
CAN BELOW



$5'6"$

$14'-0"$

8  
2'-8 3/4"  
A  
7  
6