

# Cedar Park Baseball Aka Mel Roberts Park

Foley, AL

## Lighting System

Pole/Fixture Summary						
Pole ID	Pole Height	Mtg Height	Fixture Qty	Luminaire Type	Load	Circuit
A1	70'	70'	4	TLC-LED-1200	4.68 kW	C
A2	75'	75'	4	TLC-LED-1200	4.68 kW	C
A3-A4	60'	60'	1	TLC-LED-1200	1.17 kW	A
		60'	1	TLC-LED-900	0.89 kW	A
		16'	1	TLC-BT-575	0.57 kW	A
A5-A6	60'	60'	1	TLC-LED-1200	1.17 kW	B
		60'	1	TLC-LED-900	0.89 kW	B
		16'	1	TLC-BT-575	0.57 kW	B
B1	70'	70'	2	TLC-LED-1200	2.34 kW	C
		70'	3	TLC-LED-1500	4.23 kW	C
B1	70'	16'	2	TLC-BT-575	1.15 kW	C
C1-C2	75'	75'	1	TLC-LED-1200	1.17 kW	C
		75'	4	TLC-LED-1500	5.64 kW	C
		16'	2	TLC-BT-575	1.15 kW	C
B3-B4	70'	70'	1	TLC-LED-1500	1.41 kW	A
		70'	2	TLC-LED-1200	2.34 kW	A
		16'	1	TLC-BT-575	0.57 kW	A
B5-B6	70'	70'	1	TLC-LED-1500	1.41 kW	B
		70'	2	TLC-LED-1200	2.34 kW	B
		16'	1	TLC-BT-575	0.57 kW	B
C1-C2	70'	70'	1	TLC-LED-1500	1.41 kW	C
		70'	4	TLC-LED-1200	4.68 kW	C
<b>14</b>			<b>64</b>		<b>67.36 kW</b>	

Circuit Summary			
Circuit	Description	Load	Fixture Qty
A	Field A	13.92 kW	14
B	Field B	13.92 kW	14
C	Field C	39.52 kW	36

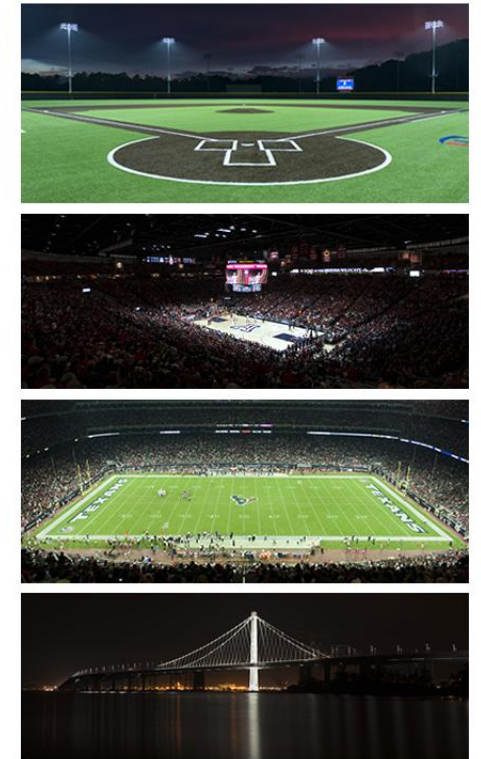
Fixture Type Summary							
Type	Source	Wattage	Lumens	L90	L80	L70	Quantity
TLC-BT-575	LED 5700K - 75 CRI	575W	52,000	>120,000	>120,000	>120,000	16
TLC-LED-1200	LED 5700K - 75 CRI	1170W	150,000	>120,000	>120,000	>120,000	31
TLC-LED-1500	LED 5700K - 75 CRI	1410W	181,000	>120,000	>120,000	>120,000	13
TLC-LED-900	LED 5700K - 75 CRI	890W	89,600	>120,000	>120,000	>120,000	4

Single Luminaire Amperage Draw Chart							
Driver Specifications (.90 min power factor)	Line Amperage Per Luminaire (max draw)						
	208 (60)	220 (60)	240 (60)	277 (60)	347 (60)	380 (60)	480 (60)
Single Phase Voltage	208 (60)	220 (60)	240 (60)	277 (60)	347 (60)	380 (60)	480 (60)
TLC-BT-575	3.3	3.2	2.9	2.5	2.0	1.8	1.5
TLC-LED-1200	6.9	6.5	6.0	5.2	4.2	3.8	3.0
TLC-LED-1500	8.4	7.9	7.3	6.3	5.0	4.6	3.6
TLC-LED-900	-	-	-	-	-	-	-

## Light Level Summary

Calculation Grid Summary								
Grid Name	Calculation Metric	Illumination					Circuits	Fixture Qty
		Ave	Min	Max	Max/Min	Ave/Min		
Field A (Infield)	Horizontal Illuminance	32	21	41	2.00	1.53	A	14
Field A (Outfield)	Horizontal Illuminance	22.2	13	30	2.35	1.71	A	14
Field B (Infield)	Horizontal Illuminance	32	21	41	2.00	1.53	B	14
Field B (Outfield)	Horizontal Illuminance	22.2	13	30	2.35	1.71	B	14
Field C (Infield)	Horizontal Illuminance	51.1	39	62	1.59	1.31	C	36
Field C (Outfield)	Horizontal Illuminance	31.5	20	42	2.07	1.57	C	36

From Hometown to Professional



**We Make It Happen.**

# Cedar Park Baseball Aka Mel Roberts Park

Foley, AL

Equipment List For Areas Shown								
Pole			Luminaires					
QTY	LOCATION	SIZE	GRADE ELEVATION	MOUNTING HEIGHT	LUMINAIRE TYPE	QTY/POLE	THIS GRID	OTHER GRIDS
2	A3-A4	60'	-	60'	TLC-LED-1200	1	1	0
				60'	TLC-LED-900	1	1	0
				16'	TLC-BT-575	1	1	0
2	B3-B4	70'	-	70'	TLC-LED-1200	2	2	0
				70'	TLC-LED-1500	1	1	0
				16'	TLC-BT-575	1	1	0
4	Totals					14	14	0

Grid Summary	
Name	Field A
Size	200'/200'/200' - basepath 60'
Spacing	20.0' x 20.0'
Height	3.0' above grade

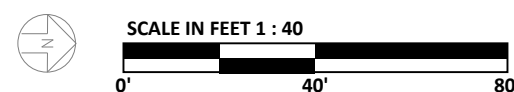
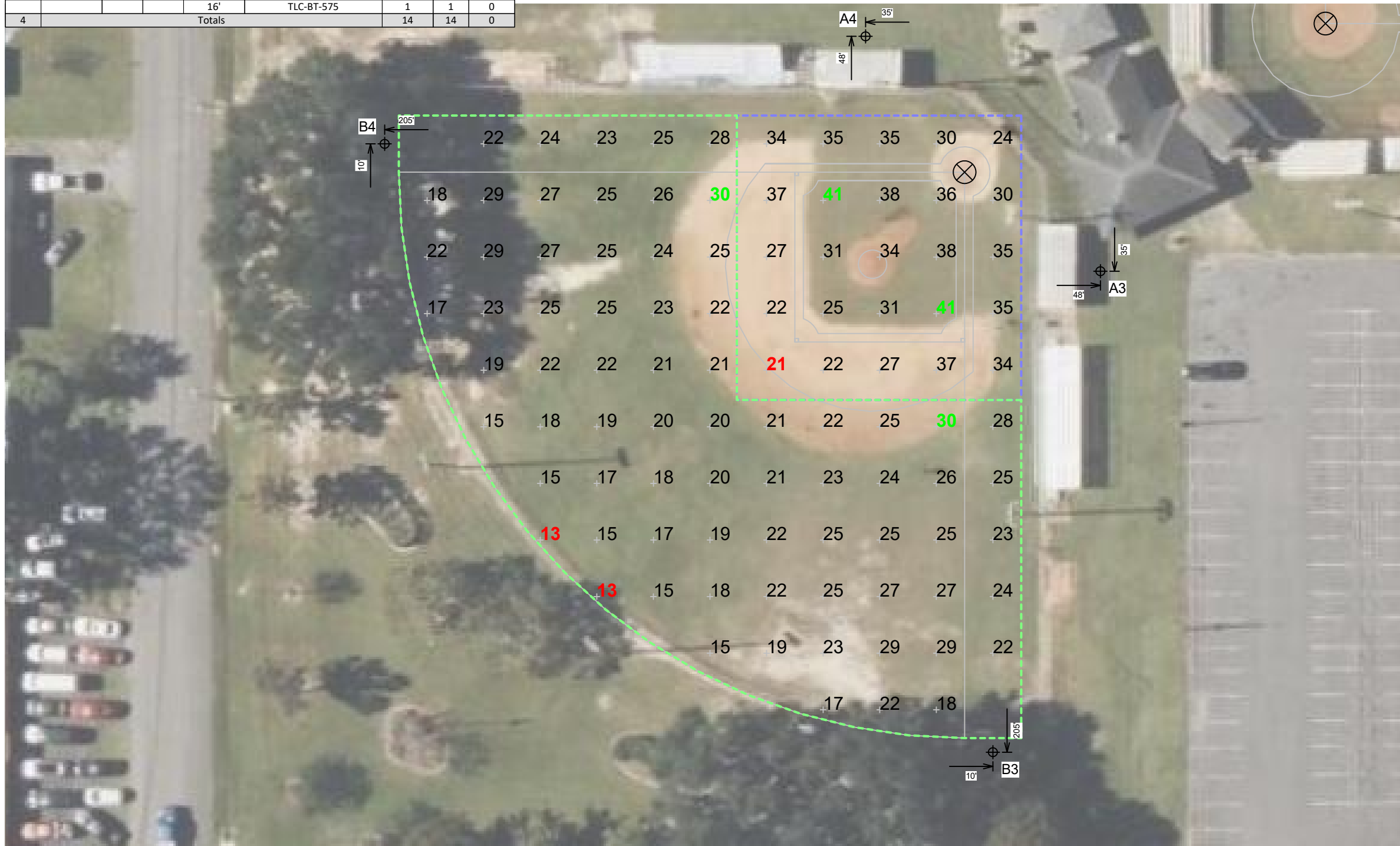
	MAINTAINED HORIZONTAL FOOTCANDELS	
	Infield	Outfield
<b>Guaranteed Average</b>	<b>30</b>	<b>20</b>
Scan Average	32.04	22.24
Maximum	41	30
Minimum	21	13
Avg/Min	1.56	1.75
<b>Guaranteed Max/Min</b>	<b>2.5</b>	<b>3</b>
Max/Min	2.00	2.35
UG (adjacent pts)	1.36	1.59
CU	0.61	
No. of Points	25	75
<b>LUMINAIRE INFORMATION</b>		
Applied Circuits	A	
No. of Luminaires	14	
Total Load	13.92 kW	

**Guaranteed Performance:** The ILLUMINATION described above is guaranteed per your Musco Warranty document and includes a 0.95 dirt depreciation factor.

**Field Measurements:** Individual field measurements may vary from computer-calculated predictions and should be taken in accordance with IESNA RP-6-15.

**Electrical System Requirements:** Refer to Amperage Draw Chart and/or the "Musco Control System Summary" for electrical sizing.

**Installation Requirements:** Results assume ± 3% nominal voltage at line side of the driver and structures located within 3 feet (1m) of design locations.



Pole location(s) ⊕ dimensions are relative to 0,0 reference point(s) ⊗



**We Make It Happen.**

Not to be reproduced in whole or part without the written consent of Musco Sports Lighting, LLC. ©1981, 2023 Musco Sports Lighting, LLC.

# Cedar Park Baseball Aka Mel Roberts Park

Foley, AL

Equipment List For Areas Shown								
Pole			Luminaires					
QTY	LOCATION	SIZE	GRADE ELEVATION	MOUNTING HEIGHT	LUMINAIRE TYPE	QTY/POLE	THIS GRID	OTHER GRIDS
2	A5-A6	60'	-	60'	TLC-LED-1200	1	1	0
				60'	TLC-LED-900	1	1	0
				16'	TLC-BT-575	1	1	0
2	B5-B6	70'	-	70'	TLC-LED-1200	2	2	0
				70'	TLC-LED-1500	1	1	0
				16'	TLC-BT-575	1	1	0
4	Totals					14	14	0

Grid Summary	
Name	Field B
Size	200'/200'/200' - basepath 60'
Spacing	20.0' x 20.0'
Height	3.0' above grade

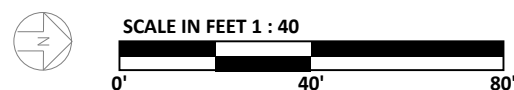
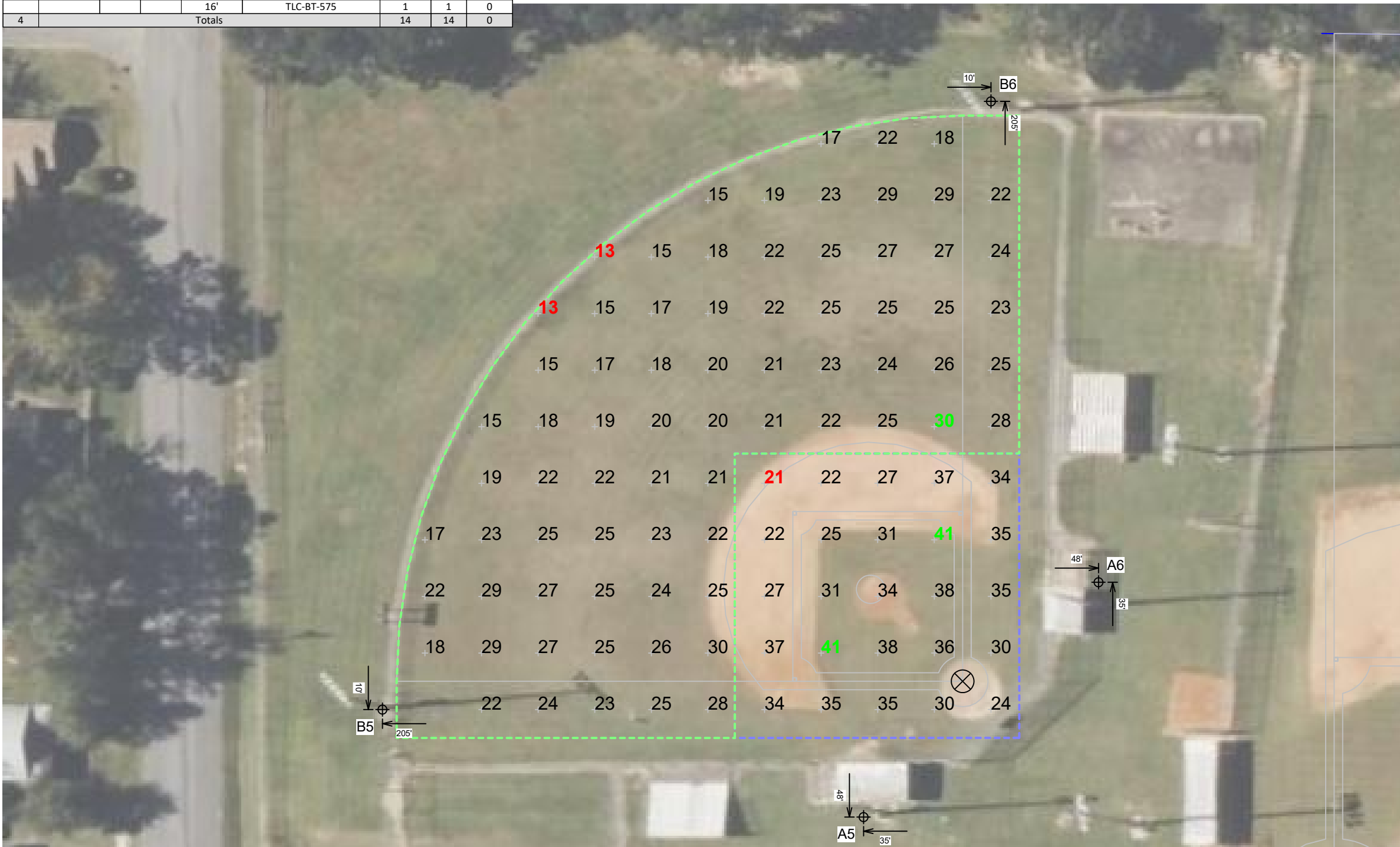
	MAINTAINED HORIZONTAL FOOTCANDLES	
	Infield	Outfield
<b>Guaranteed Average</b>	<b>30</b>	<b>20</b>
Scan Average	32.04	22.24
Maximum	41	30
Minimum	21	13
Avg/Min	1.56	1.75
<b>Guaranteed Max/Min</b>	<b>2.5</b>	<b>3</b>
Max/Min	2.00	2.35
UG (adjacent pts)	1.36	1.59
CU	0.61	
No. of Points	25	75
<b>LUMINAIRE INFORMATION</b>		
Applied Circuits	B	
No. of Luminaires	14	
Total Load	13.92 kW	

**Guaranteed Performance:** The ILLUMINATION described above is guaranteed per your Musco Warranty document and includes a 0.95 dirt depreciation factor.

**Field Measurements:** Individual field measurements may vary from computer-calculated predictions and should be taken in accordance with IESNA RP-6-15.

**Electrical System Requirements:** Refer to Amperage Draw Chart and/or the "Musco Control System Summary" for electrical sizing.

**Installation Requirements:** Results assume ± 3% nominal voltage at line side of the driver and structures located within 3 feet (1m) of design locations.



Pole location(s) ⊕ dimensions are relative to 0,0 reference point(s) ⊗



We Make It Happen.

Not to be reproduced in whole or part without the written consent of Musco Sports Lighting, LLC. ©1981, 2023 Musco Sports Lighting, LLC.

# Cedar Park Baseball Aka Mel Roberts Park

Foley, AL

Equipment List For Areas Shown								
Pole			Luminaires					
QTY	LOCATION	SIZE	GRADE ELEVATION	MOUNTING HEIGHT	LUMINAIRE TYPE	QTY/POLE	THIS GRID	OTHER GRIDS
1	A1	70'	-	70'	TLC-LED-1200	4	4	0
1	A2	75'	-	75'	TLC-LED-1200	4	4	0
1	B1	70'	-	70'	TLC-LED-1200	2	2	0
				70'	TLC-LED-1500	3	3	0
				16'	TLC-BT-575	2	2	0
1	B2	75'	-	75'	TLC-LED-1200	1	1	0
				75'	TLC-LED-1500	4	4	0
				16'	TLC-BT-575	2	2	0
2	C1-C2	70'	-	70'	TLC-LED-1200	4	4	0
				70'	TLC-LED-1500	1	1	0
				16'	TLC-BT-575	2	2	0
6	Totals					36	36	0

Grid Summary	
Name	Field C
Size	Irregular 311'/343'/311'
Spacing	30.0' x 30.0'
Height	3.0' above grade

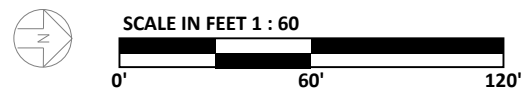
	MAINTAINED HORIZONTAL FOOTCANDLES	
	Infield	Outfield
<b>Guaranteed Average</b>	<b>50</b>	<b>30</b>
Scan Average	51.10	31.46
Maximum	62	42
Minimum	39	20
Avg/Min	1.32	1.55
<b>Guaranteed Max/Min</b>	<b>2</b>	<b>2.5</b>
Max/Min	1.59	2.07
UG (adjacent pts)	1.29	1.52
CU	0.74	
No. of Points	25	90
<b>LUMINAIRE INFORMATION</b>		
Applied Circuits	C	
No. of Luminaires	36	
Total Load	39.52 kW	

**Guaranteed Performance:** The ILLUMINATION described above is guaranteed per your Musco Warranty document and includes a 0.95 dirt depreciation factor.

**Field Measurements:** Individual field measurements may vary from computer-calculated predictions and should be taken in accordance with IESNA RP-6-15.

**Electrical System Requirements:** Refer to Amperage Draw Chart and/or the "Musco Control System Summary" for electrical sizing.

**Installation Requirements:** Results assume ± 3% nominal voltage at line side of the driver and structures located within 3 feet (1m) of design locations.



Pole location(s) ⊕ dimensions are relative to 0,0 reference point(s) ⊗



# Cedar Park Baseball Aka Mel Roberts Park

Foley, AL

## Equipment Layout

### INCLUDES:

- Field A
- Field B
- Field C

**Electrical System Requirements:** Refer to Amperage Draw Chart and/or the "Musco Control System Summary" for electrical sizing.

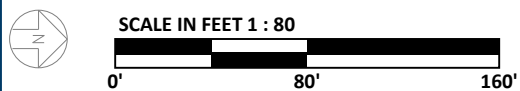
**Installation Requirements:** Results assume ± 3% nominal voltage at line side of the driver and structures located within 3 feet (1m) of design locations.

## Equipment List For Areas Shown

QTY	LOCATION	SIZE	Pole		Luminaires	
			GRADE ELEVATION	MOUNTING HEIGHT	LUMINAIRE TYPE	QTY/POLE
1	A1	70'	-	70'	TLC-LED-1200	4
1	A2	75'	-	75'	TLC-LED-1200	4
4	A3-A6	60'	-	60'	TLC-LED-1200	1
				60'	TLC-LED-900	1
				16'	TLC-BT-575	1
1	B1	70'	-	70'	TLC-LED-1200	2
				70'	TLC-LED-1500	3
				16'	TLC-BT-575	2
1	B2	75'	-	75'	TLC-LED-1200	1
				75'	TLC-LED-1500	4
				16'	TLC-BT-575	2
4	B3-B6	70'	-	70'	TLC-LED-1200	2
				70'	TLC-LED-1500	1
				16'	TLC-BT-575	1
2	C1-C2	70'	-	70'	TLC-LED-1200	4
				70'	TLC-LED-1500	1
				16'	TLC-BT-575	2
14	Totals					64

## Single Luminaire Amperage Draw Chart

Driver Specifications (.90 min power factor)	Line Amperage Per Luminaire (max draw)						
	208 (60)	220 (60)	240 (60)	277 (60)	347 (60)	380 (60)	480 (60)
Single Phase Voltage							
TLC-BT-575	3.3	3.2	2.9	2.5	2.0	1.8	1.5
TLC-LED-1200	6.9	6.5	6.0	5.2	4.2	3.8	3.0
TLC-LED-1500	8.4	7.9	7.3	6.3	5.0	4.6	3.6
TLC-LED-900	-	-	-	-	-	-	-



Pole location(s) ⊕ dimensions are relative to 0,0 reference point(s) ⊗

